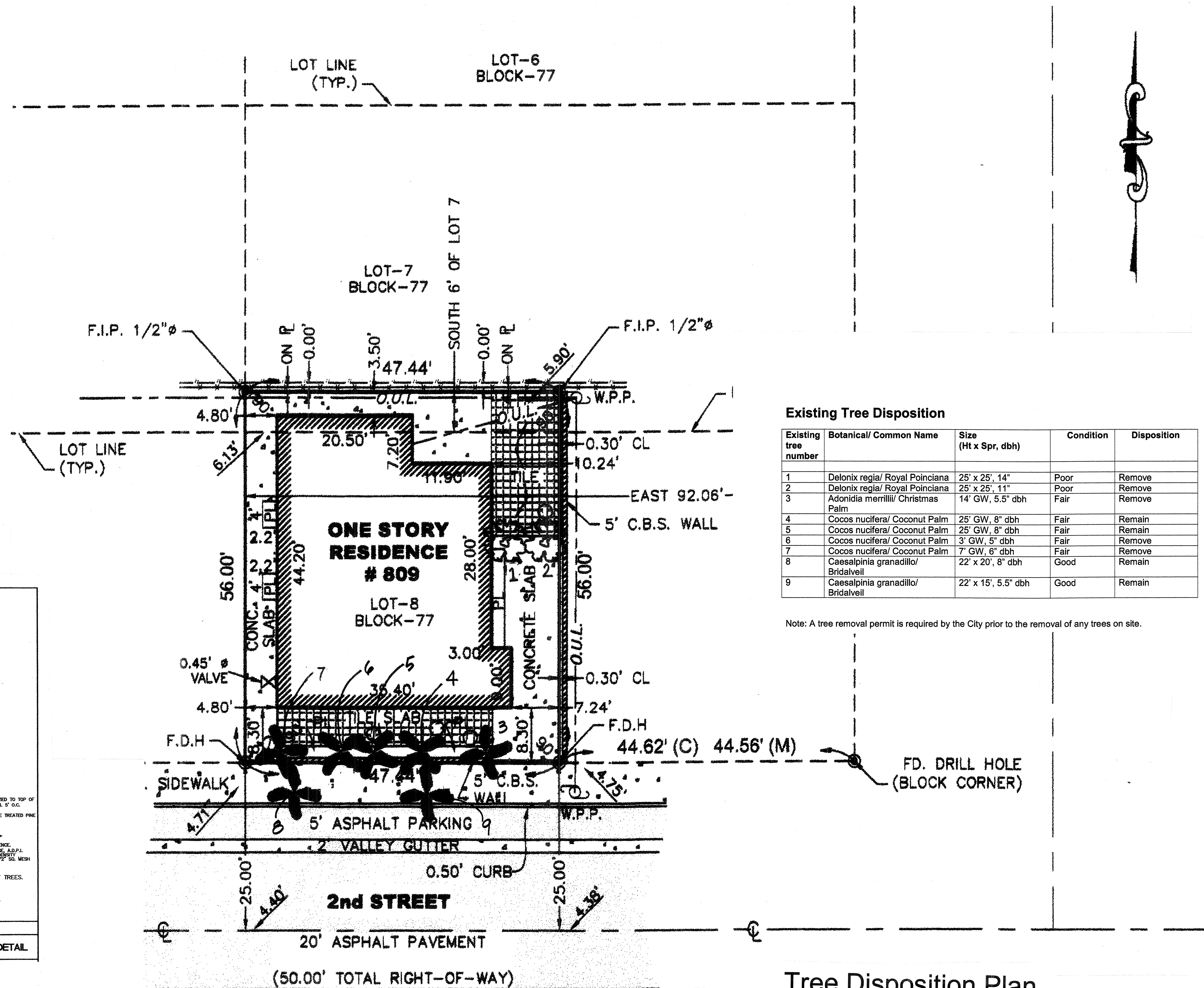


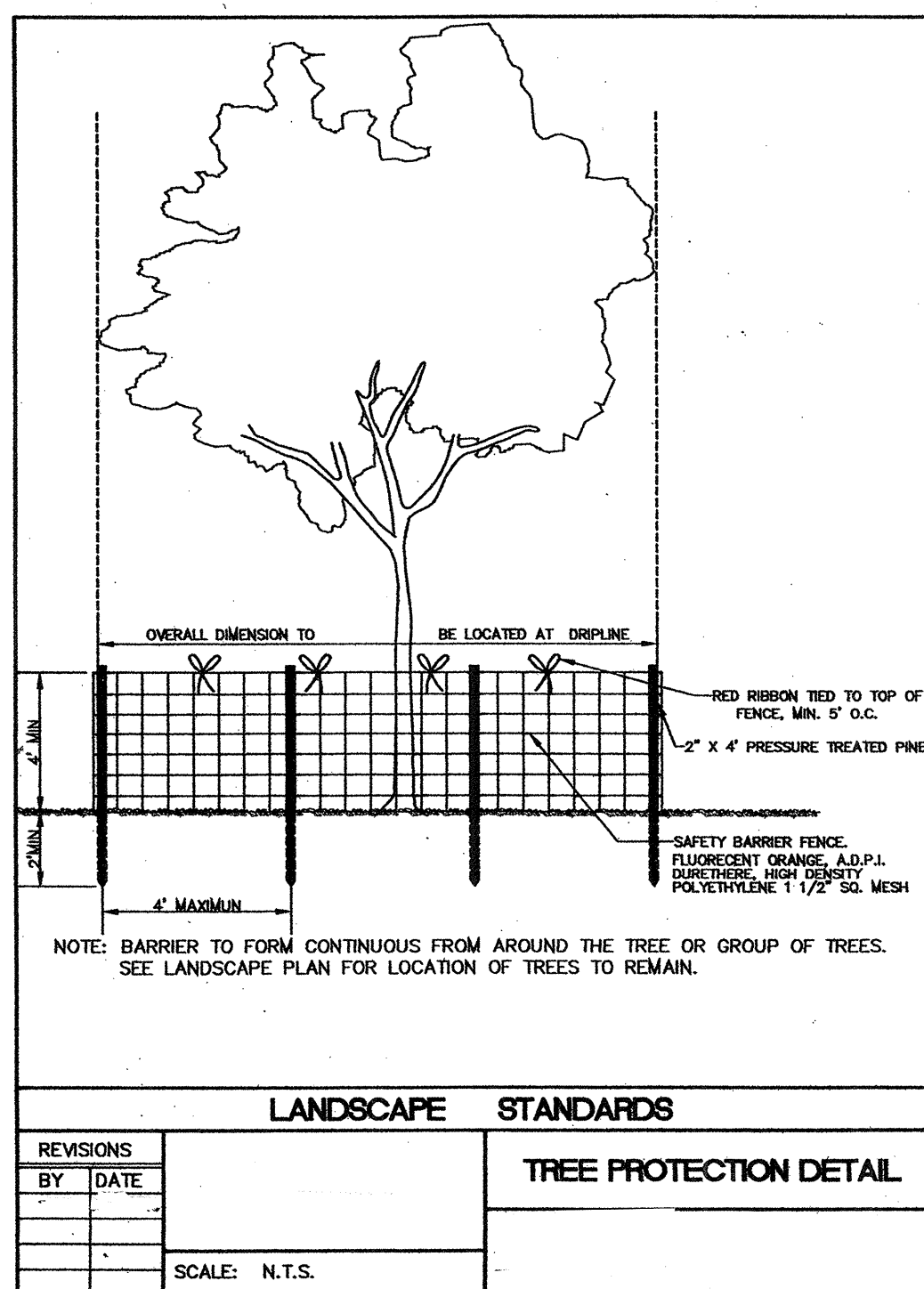
REVISIONS



Existing Tree Disposition

Existing tree number	Botanical/ Common Name	Size (Ht x Spr, dbh)	Condition	Disposition
1	Delonix regia/ Royal Poinciana	25' x 25', 14"	Poor	Remove
2	Delonix regia/ Royal Poinciana	25' x 25', 11"	Poor	Remove
3	Adonidia merrillii/ Christmas Palm	14' GW, 5.5" dbh	Fair	Remove
4	Cocos nucifera/ Coconut Palm	25' GW, 8" dbh	Fair	Remain
5	Cocos nucifera/ Coconut Palm	25' GW, 8" dbh	Fair	Remain
6	Cocos nucifera/ Coconut Palm	3' GW, 5" dbh	Fair	Remove
7	Cocos nucifera/ Coconut Palm	7' GW, 6" dbh	Fair	Remove
8	Caesalpinia granadillo/ Bridalveil	22' x 20', 8" dbh	Good	Remain
9	Caesalpinia granadillo/ Bridalveil	22' x 15', 5.5" dbh	Good	Remain

Note: A tree removal permit is required by the City prior to the removal of any trees on site.



LANDSCAPE STANDARDS	
REVISIONS BY DATE	TREE PROTECTION DETAIL
SCALE: N.T.S.	

Tree Disposition Plan
 Scale 1/8" = 1'-0"

WATERCUP INVESTMENTS, LLC
 809 2ND STREET - TOWNHOMES
 809 2ND STREET, MIAMI BEACH, FLORIDA 33135

Drawn By: PW
 Checked By: KIM MOYER

TREE DISPOSITION PLAN

TD-1