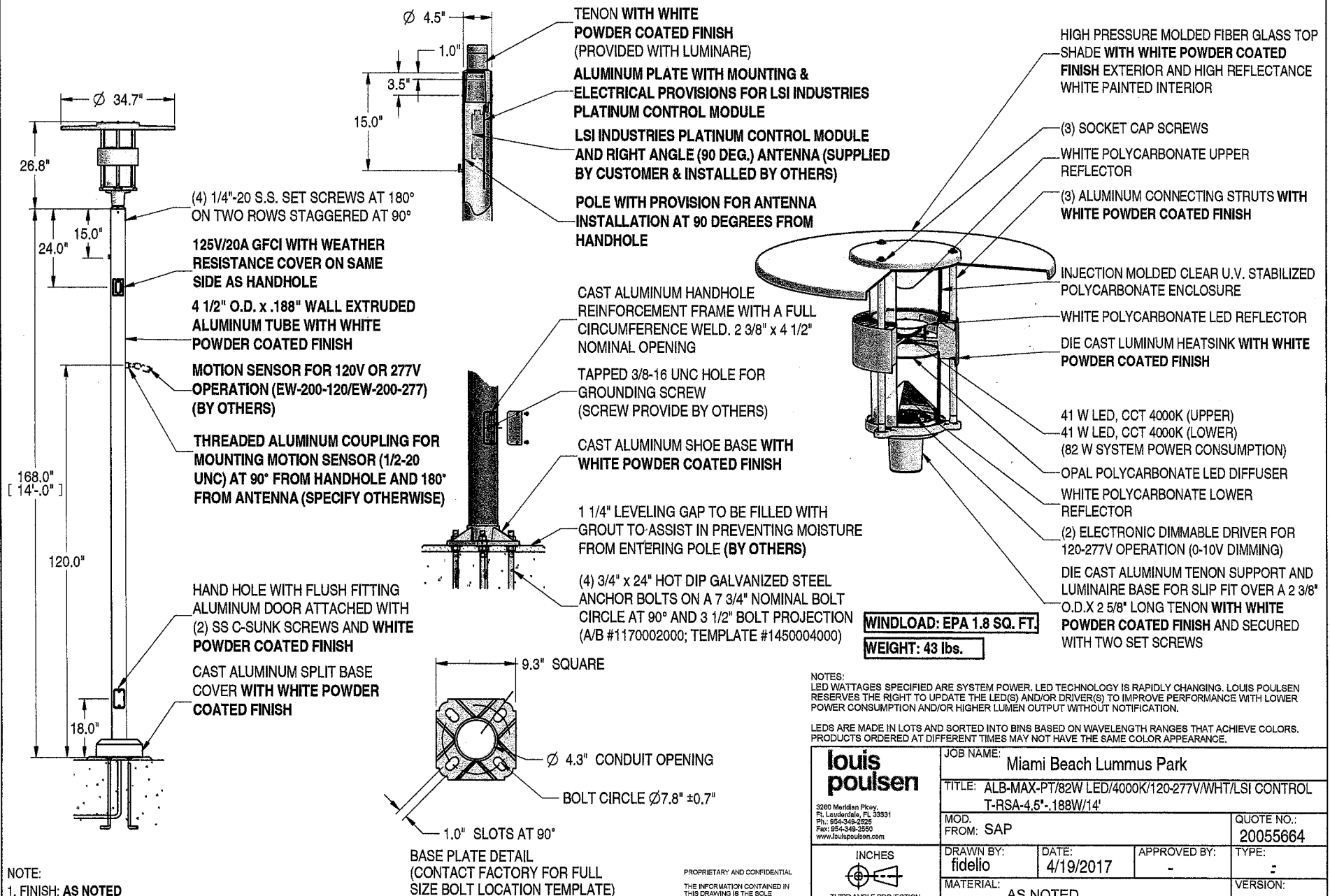


VER.	BY	DATE	DESCRIPTION
01	FSE	04-19-17	REVISE TO ADD LSI INDUSTRIES CONTROLS



- NOTE:
1. FINISH: AS NOTED
 2. VOLTAGE: 120-277V
 3. ANY CHANGE IN POLE SPECIFICATION MAY RESULT IN CHANGES TO THE ANCHOR BOLT SIZE OR PATTERN.

PROPRIETARY AND CONFIDENTIAL
 THE INFORMATION CONTAINED IN THIS DRAWING IS THE SOLE PROPERTY OF LOUIS POULSEN USA, INC. ANY REPRODUCTION IN PART OR AS A WHOLE WITHOUT THE WRITTEN PERMISSION OF LOUIS POULSEN USA, INC. IS PROHIBITED.

NOTES:
 LED WATTAGES SPECIFIED ARE SYSTEM POWER. LED TECHNOLOGY IS RAPIDLY CHANGING. LOUIS POULSEN RESERVES THE RIGHT TO UPDATE THE LED(S) AND/OR DRIVER(S) TO IMPROVE PERFORMANCE WITH LOWER POWER CONSUMPTION AND/OR HIGHER LUMEN OUTPUT WITHOUT NOTIFICATION.

LEDS ARE MADE IN LOTS AND SORTED INTO BINS BASED ON WAVELENGTH RANGES THAT ACHIEVE COLORS. PRODUCTS ORDERED AT DIFFERENT TIMES MAY NOT HAVE THE SAME COLOR APPEARANCE.

louis poulsen <small>3260 Meridian Pkwy. Ft. Lauderdale, FL 33331 Ph: 954-348-2925 Fax: 954-348-2550 www.louispoulsen.com</small>		JOB NAME: Miami Beach Lumms Park	
		TITLE: ALB-MAX-PT/82W LED/4000K/120-277V/WHT/LSI CONTROL T-RSA-4.5"-188W/14'	
MOD. FROM: SAP		QUOTE NO.: 20055664	
DRAWN BY: fidello	DATE: 4/19/2017	APPROVED BY: -	TYPE: -
MATERIAL: AS NOTED		VERSION: 01	
SCALE: NTS	SHEET: 1 OF 1	DWG. NO.: 131-19040-001	