

TREE AND PALM PROTECTION NOTES:

- Before beginning work, the Contractor is required to meet with the Landscape Architect at the site to review all work procedures, access routes, storage areas, and tree protection measures.
- Fences shall be erected to protect trees to be preserved. Fences define a specific protection zone for each tree or group of trees. Fences are to remain until all site work has been completed. Fences may not be relocated or removed without the written permission of the Landscape Architect. Refer to Tree & Palms Protection Detail.
- Construction trailers, traffic and storage areas must remain outside fenced areas at all times.
- All underground utilities and drain or irrigation lines shall be routed outside the tree protection zone. If lines must traverse the protection area, they shall be tunneled or bored under the tree.
- No materials, equipment, spoil, or waste or washout water may be deposited, stored, or parked within the tree protection zone (fenced area).
- Additional tree pruning required for clearance during construction must be performed by a qualified arborist and not by construction personnel.
- Any herbicides placed under paving materials must be safe for use around trees and labeled for that use. Any pesticides used on site must be tree-safe and not easily transported by water.
- If injury should occur to any tree during construction, it should be evaluated as soon as possible by the Landscape Contractor and the Landscape Architect should be notified immediately.
- Any grading, construction, demolition, or other work that is expected to encounter tree roots must be monitored by the Landscape Contractor.
- All trees shall be irrigated three times a week. Each irrigation procedure shall wet the soil within the tree protection zone to a depth of 30 inches.
- Erosion control devices such as silt fencing, debris basins, and water diversion structures shall be installed to prevent site erosion and siltation situations and/or erosion within the tree protection zones.
- Before grading, pad preparation, or excavation for foundations, footings, walls, or trenching near trees the trees shall be root pruned 12 inches outside the tree protection zone by cutting all roots cleanly to a depth of 36 inches. Roots shall be cut manually by digging a trench and cutting exposed roots with a saw, vibrating knife, rock saw, narrow trencher with sharp blades, or other approved root-pruning equipment.
- Any roots damaged during grading or construction shall be exposed to sound tissue and cut cleanly with a saw.
- If temporary haul or access roads must pass over the root area of trees to be retained, a road bed of 6 inches of mulch or gravel shall be created to protect the soil. The road bed material shall be replenished as necessary to maintain a 6-inch depth.
- Spoil from trenches, basements, or other excavations shall not be placed within the tree protection zone, either temporarily or permanently.
- No burn piles or debris pits shall be placed within the tree protection zone. No ashes, debris, or garbage may be dumped or buried within the tree protection zone.
- Maintain fire-safe areas around fenced areas. Also, no heat sources, flames, ignition sources, or smoking is allowed near mulch or trees.

TREE DISPOSITION LEGEND

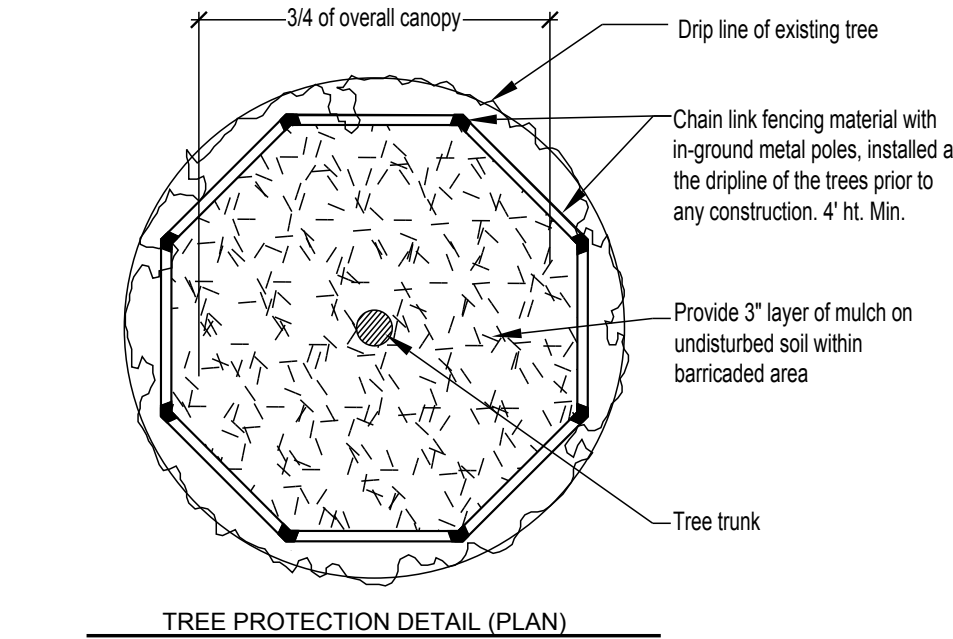
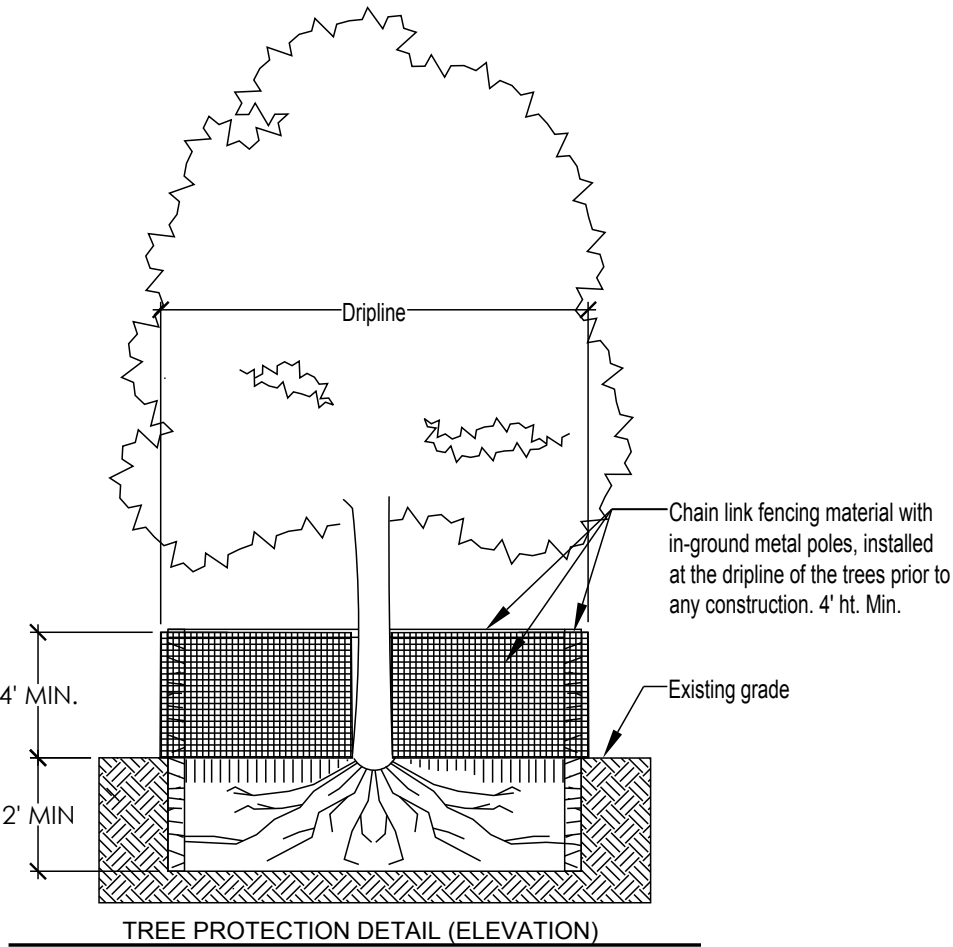
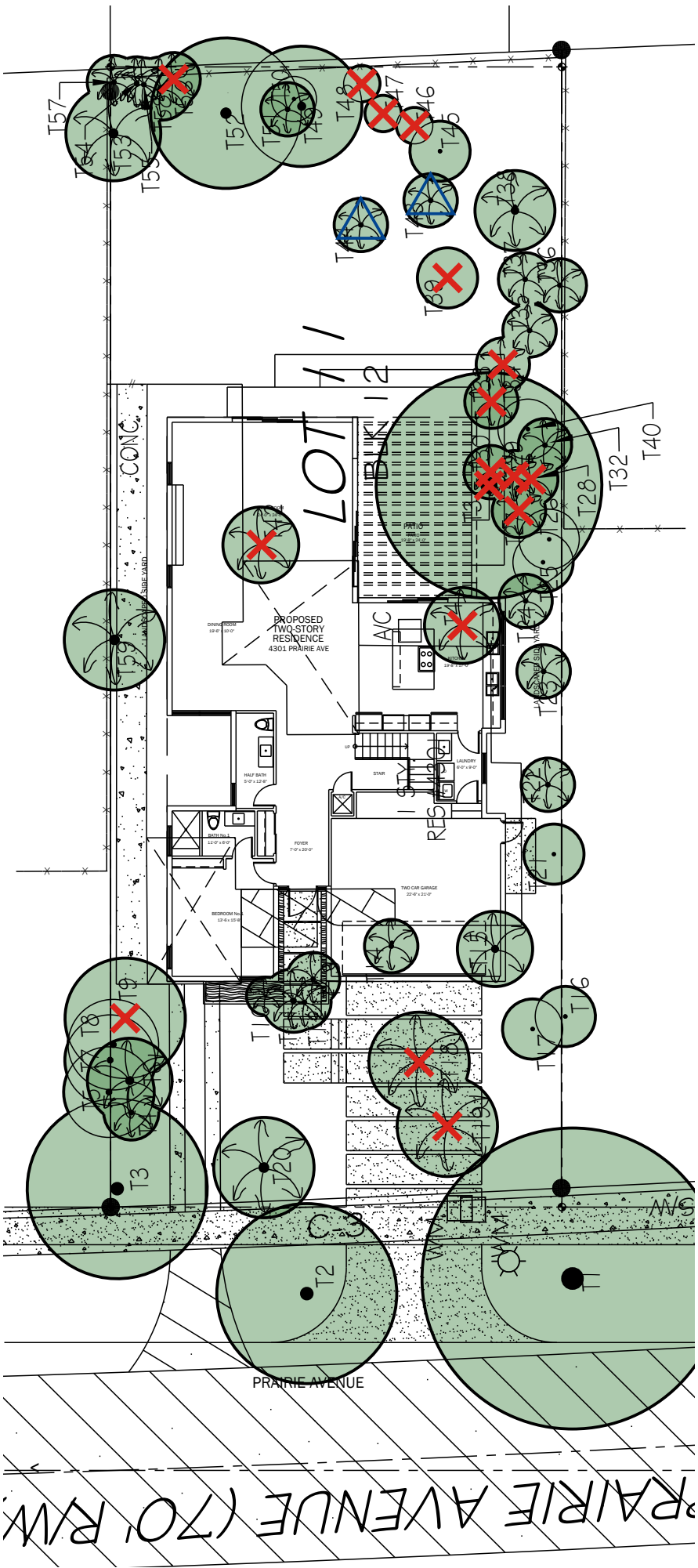


Existing tree or palm to be transplanted

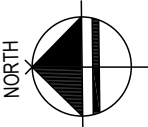


Existing tree or palm to be removed

Existing tree and palm to remain in their existing location and be protected, no construction or excavation shall be permitted within the dripline of the trees.



Existing Tree Disposition Plan 1" = 20'-0"

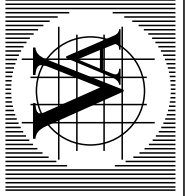


REVISIONS:

PROPOSED TWO STORY RESIDENCE FOR:
JESSAM INVESTMENTS LLC,
 4301 PRAIRIE AVE
 MIAMI BEACH, FL 33140
 BRUNO HALIMI

ALL LANDSCAPE
 DATA INC.
 DERICK LANGE
 NO. LA6667045

VILLA & ASSOCIATES INC.
 ARCHITECTURE - PLANNING - INTERIOR DESIGN
 7344 SW 48 STREET - SUITE 201 - MIAMI, FLORIDA 33155
 TEL. 305-661-8181 - FAX 305-661-8710 - E-Mail Villarchitects@att.net
 CONSULTANT: ARCHI-TEK STUDIO CORP.
 TEL. 305-799-8016 - E-Mail maguilar@architekstudio.com



DATE: 12-15-16	SCALE:
PROJECT NO:	
DRAWING NO: L-1 OF 6	

MIAMI BEACH TREE MITIGATION SUMMARY CHART				
PROPOSED CANOPY LOSS				
390	Proposed Tree Canopy Loss (see Existing Tree Disposition List)			
0	Proposed palm Canopy Loss (see Existing Tree Disposition List)			
667	- 70% of canopy mitigation must be met with new trees			
286	- 30% of canopy mitigation may be met with palms			
TREE REQUIRED CANOPY MITIGATION				1,442
PALM REQUIRED CANOPY MITIGATION				953
TOTAL REQUIRED CANOPY MITIGATION				2,395
QUANTITY	REPLACEMENT CANOPY TYPE	MIN. SIZE AT PLANTING	CANOPY CREDIT (Sq.Ft)	CANOPY MITIGATED (Sq.Ft)
8	Category 1 Trees	12' OAH	300	2,400
	Category 2 Trees	10' OAH	150	0
	Category 3 Trees	8' OAH	100	0
	Category 4 Palms	6' OAH	50	0
PROVIDED CANOPY MITIGATION				2,400

TREE MAINTENANCE PLAN
DURING CONSTRUCTION

4301 Prairie Avenue
Miami Beach, FL 33140

- 1.0
- All trees to remain on-site shall be protected during construction as per the Tree Protection Standards provided.
- 2.0
- All trees to remain on-site shall be watered at standard rates at least two times per week unless more than ½” of rainfall occurs.
- 3.0
- All trees to remain on-site shall be fertilized three times per year using a granular 82-12 “Palm Special” product at standard rates. Fertilizer shall be broadcast on the ground beneath the canopy of each tree and watered in.
- 4.0
- Trees shall not be pruned unless they need to be cleared from construction areas. All pruning shall be done in accordance with the American National Standards Institute (ANSI)-A00 standards.

Existing Tree Disposition List - 4301 Prairie Residence										
NUMBER	BOTANICAL NAME	COMMON NAME	HEIGHT (FT)	SPREAD (FT)	DIAMETER DBH (IN)	TREE CANOPY (SF)	PALM CANOPY (SF)	CONDITION	ACTION	COMMENTS
T1	Terminalia catappa	Tropical Almond	40	40	48			Good	Remain	
T2	Senna surattensis	Cassia	22	20	10			Good	Remain	
T3	Ficus benjamina	Weeping Fig	24	24	48			Fair	Remain	
T4	Veitchia montgomeryana	Montgomery Palm	24	7	10			Poor	Remain	
T5	Ficus benjamina	Weeping Fig	20	10	12			Poor	Remain	
T6	Sabal palmetto	Sabal Palm	22	10	18			Good	Remain	
T7	Ficus benjamina	Weeping Fig	18	10	12			Poor	Remain	
T8	Ficus benjamina	Weeping Fig	18	10	12			Poor	Remain	
T9	Schinus terebinthifolia	Brazilian peppertree	24	16	36			Fair	Remove	Prohibited Tree
T10	Roystonea regia	Royal Palm	12	5	10		20	Fair	Remove	Proposed building conflict
T11	Roystonea regia	Royal Palm	14	8	6		50	Fair	Remove	Proposed building conflict
T12	Veitchia montgomeryana	Montgomery Palm	12	7	6		38	Fair	Remove	Proposed building conflict
T13	Veitchia montgomeryana	Montgomery Palm	10	7	6		38	Fair	Remove	Proposed building conflict
T14	Veitchia montgomeryana	Montgomery Palm	12	7	48		38	Poor	Remove	Proposed building conflict - Cluster
T15	Sabal palmetto	Sabal Palm	20	9	24		64	Bad	Remove	Palm + Ficus strangler
T16	Cordyline australis	Cabbage tree							Remain	Not a Tree - overgrown shrubs
T17	Plumeria rubra	Frangipani	9	8	24			Fair	Remain	
T18	Cocos nucifera 'Maypan'	Coconut Palm	24	12	12		113	Good	Remove	Bent trunk
T19	Cocos nucifera 'Maypan'	Coconut Palm	30	12	12		113	Fair	Remove	
T20	Roystonea regia	Royal Palm	45	12	24			Fair	Remain	
T21	Bursera simaruba	Gumbo Limbo	15	8	12			Fair	Remain	
T22	Ptychosperma elegans	Solitaire Palm	12	7	12			Fair	Remain	
T23	Veitchia montgomeryana	Montgomery Palm	20	6	12			Fair	Remain	
T24	Veitchia montgomeryana	Montgomery Palm	18	6	6			Fair	Remain	
T25	Cordyline australis	Cabbage tree			12				Remain	Not a Tree - overgrown shrubs
T26	Terminalia catappa	Tropical Almond	14	8	12			Poor	Remain	
T27	Veitchia montgomeryana	Montgomery Palm	22	7	8		38	Poor	Remove	Proposed building conflict
T28	Veitchia montgomeryana	Montgomery Palm	22	7	8		38	Poor	Remove	
T29	Veitchia montgomeryana	Montgomery Palm	22	7	8		38	Poor	Remove	Proposed building conflict
T30	Veitchia montgomeryana	Montgomery Palm	22	7	8		38	Poor	Remove	Proposed building conflict
T31	Mangifera indica	Mango Tree	30	30	36	1,414		Fair	Remove	Proposed building conflict
T32	Veitchia montgomeryana	Montgomery Palm	22	7	24		38	Poor	Remain	Double - Proposed building conflict
T33	Veitchia montgomeryana	Montgomery Palm	22	7	8		38	Poor	Remove	Proposed building conflict
T34	Veitchia montgomeryana	Montgomery Palm	22	7	8		38	Poor	Remove	Proposed building conflict
T35	Veitchia montgomeryana	Montgomery Palm	22	7	8			Fair	Remain	
T36	Veitchia montgomeryana	Montgomery Palm	22	7	8			Fair	Remain	
T37	Ptychosperma elegans	Solitaire Palm	22	7	8			Fair	Remain	Double
T38	Veitchia montgomeryana	Montgomery Palm	20	10	48			Fair	Remain	Cluster
T39	Cordyline australis	Cabbage tree			12				Remove	Not a Tree - overgrown shrubs
T40	Terminalia catappa	Tropical Almond	12	6	10	28		Poor	Remain	
T41	Sabal palmetto	Sabal Palm	16	11	18		95	Fair	Remove	Proposed building conflict
T42	Sabal palmetto	Sabal Palm	20	9	12		64	Fair	Remove	Proposed building conflict
T43	Roystonea regia	Royal Palm	16	7	12			Fair	Transplant	
T44	Roystonea regia	Royal Palm	16	7	12			Fair	Transplant	
T45	Terminalia catappa	Tropical Almond	12	8	18			Fair	Remain	
T46	Pandanus utilis	Screw Pine	4	4	24			Fair	Remove	Too Small
T47	Pandanus utilis	Screw Pine	6	4	6			Fair	Remove	Too Small
T48	Pandanus utilis	Screw Pine	6	4	6			Fair	Remain	Too Small
T49	Plumeria rubra	Frangipani	18	16	36			Fair	Remain	
T50	Pandanus utilis	Screw Pine	10	6	24			Fair	Remain	
T51	Veitchia montgomeryana	Montgomery Palm	16	6	8			Fair	Remain	
T52	Mangifera indica	Mango Tree	30	20	24			Fair	Remain	
T53	Veitchia montgomeryana	Montgomery Palm	24	12	8			Fair	Remain	Clusters
T54	Veitchia montgomeryana	Montgomery Palm	18	8	8			Fair	Remain	
T55	Veitchia montgomeryana	Montgomery Palm	18	8	8			Fair	Remain	
T56	Dypsis lutescens	Areca Palm	12	8	8		50	Poor	Remove	
T57	Veitchia montgomeryana	Montgomery Palm	18	8	8			Fair	Remain	
T58	Roystonea regia	Royal Palm	18	8	36			Fair	Remain	
T59	Roystonea regia	Royal Palm	26	12	24			Fair	Remain	
TOTAL PROPOSED CANOPY LOSS (in square feet)						1,442	953			
All Shrubs/Vegetation Not Shown On This Schedule Are To Be Removed.										

REVISIONS :										

PROPOSED TWO STORY RESIDENCE FOR:

JESSAM INVESTMENTS LLC,
4301 PRAIRIE AVE
MIAMI BEACH, FL 33140

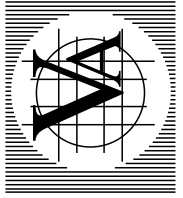
BRUNO HALIMI

ALL LANDSCAPE DATA INC.

DERICK LANGEL
NO. LA6667045

VILLA & ASSOCIATES INC.
ARCHITECTURE - PLANNING - INTERIOR DESIGN
7344 SW 48 STREET - SUITE 201 - MIAMI, FLORIDA 33155
TEL. 305-661-8181 - FAX 305-661-8710 - E-Mail Villarchitects@att.net

CONSULTANT : ARCHI-TEK STUDIO CORP.
TEL. 305-798-8016 - E-Mail maguilar@architekstudio.com

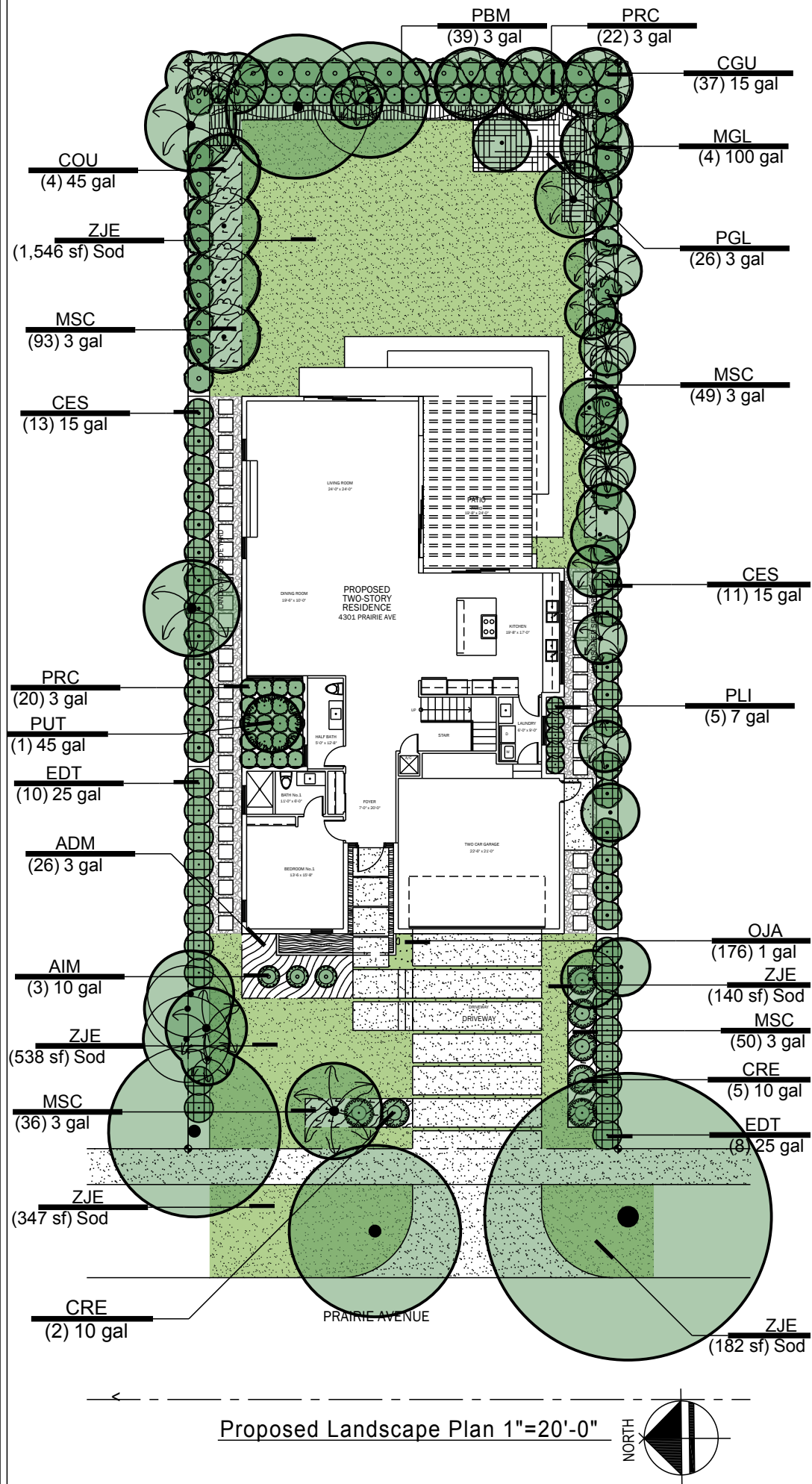


DATE: 12-15-16

SCALE:

PROJECT NO:

DRAWING NO: L-2 OF 6



PLANT SCHEDULE

TREES	QTY	BOTANICAL NAME	COMMON NAME	CONT	DBH	HGT	REMARKS	
COU	4	Coccoloba uvifera	Sea Grape	45 gal	2.5"	14` OA	STD - Florida Native - Miami-Dade Landscape Manual - Very Drought Tolerant	
MGL	4	Magnolia `Little Gem`	Magnolia	100 gal	2"	12` OA		
PUT	1	Pandanus utilis	Screw Pine	45 gal	2.5"	10` OA	Miami-Dade Landscape Manual - Drought Tolerant	
SHRUBS	QTY	BOTANICAL NAME	COMMON NAME	CONT	HGT	SPRD	SPACING	REMARKS
AIM	3	Alcantarea imperialis	Imperial Bromeliad	10 gal	3`	3`	36" o.c.	Drought Tolerant
CGU	37	Clusia guttifera	Small-Leaf Clusia	15 gal	6`	4`	48" o.c.	Florida Native - Miami-Dade Landscape Manual - Drought Tolerant
CES	24	Conocarpus erectus sericeus	Silver Button Wood	15 gal	5`	4`	48" o.c.	Shrub Type - Florida Native - Miami-Dade Landscape Manual
CRE	7	Cycas revoluta	Japanese Sago Palm	10 gal	3`-4`	3`	48" o.c.	Miami-Dade Landscape Manual - Drought Tolerant - Sun Grown
EDT	18	Elaeocarpus decipiens TM	Japanese Blueberry	25 gal	7` OA	4`	48" o.c.	
PRC	42	Philodendron x `Rojo Congo`	Rojo Congo	3 gal	2`	2`	30" o.c.	
PLI	5	Psychotria ligustrifolia	Bahama Coffee	7 gal	2`	2`	30" o.c.	Florida Native - Miami-Dade Landscape Manual
SHRUB AREAS	QTY	BOTANICAL NAME	COMMON NAME	CONT	HGT	SPRD	SPACING	REMARKS
ADM	26	Asparagus `Myers`	Myers Asparagus	3 gal	1`	1`	24" o.c.	
MSC	228	Microsorium scolopendrum	Wart Fern	3 gal			15" o.c.	
PBM	39	Philodendron burle-marxii		3 gal	1.5`	1.5`	24" o.c.	
PGL	26	Philodendron gloriosum		3 gal	1.5`	2`	28" o.c.	
GROUND COVERS	QTY	BOTANICAL NAME	COMMON NAME	CONT	HGT	SPRD	SPACING	REMARKS
OJA	176	Ophiopogon japonicus	Mondo Grass	1 gal	6" OA	12"	8" o.c.	
ZJE	2,753 sf	Zoysia japonica `Empire`	Korean Grass	Sod				

LANDSCAPE REQUIREMENTS (Single Family Home)		
City of Miami Beach, Florida Code of Ordinances & Miami-Dade County Ordinance		
TREES	Required	Provided
Street Trees:	3	3
One canopy tree or grouping of three palms shall be provided for every 25 linear feet of frontage. Length of Prairie Avenue: 60 feet / 25 feet = 2.4		
Lot Trees (In addition to Street Trees): 3 trees per lot.	3	21
Proposed Lot Trees: Minimum Height at time of planting: 10' / Minimum Caliper: 2"		
No less than 30 % of the required trees shall be native species.		
Existing to Remain or Transplant		13
Total of Required Trees	6	24
SHRUBS	Required	Provided
10 Units (Shrubs) per required tree.	60	136
No less than 30% of the required shrubs shall be native species.		
No less than 50% of the required shrubs shall be low maintenance and drought tolerant species.		
80% of the shrubs shall be listed in the Miami Dade Landscape Manual, The Miami Dade Street	18	66
	30	40
	48	73

REVISIONS :									
-------------	--	--	--	--	--	--	--	--	--

PROPOSED TWO STORY RESIDENCE FOR:

JESSAM INVESTMENTS LLC,
4301 PRAIRIE AVE
MIAMI BEACH, FL 33140

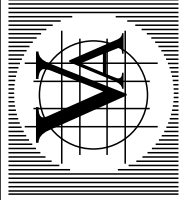
BRUNO HALIMI

ALL LANDSCAPE DATA INC.

DERICK LANGEL
NO. LA6667045

VILLA & ASSOCIATES INC.
ARCHITECTURE - PLANNING - INTERIOR DESIGN
7344 SW 48 STREET - SUITE 201 - MIAMI, FLORIDA 33155
TEL. 305-661-8181 - FAX 305-661-8710 - E-Mail Villarchitects@att.net

CONSULTANT : ARCHI-TEK STUDIO CORP.
TEL. 305-798-8016 - E-Mail maguilar@architekstudio.com



DATE: 12-15-16

SCALE:

PROJECT NO:

DRAWING NO: L-3 OF 6



Sea Grape



Magnolia



Screw Pine



Imperial Bromeliad



Small-Leaf Clusia



Silver Button Wood



Japanese Sago Palm



Japanese Blueberry



Rojo Congo



Bahama Coffee



Myers Asparagus



Wart Fern



Burle-marx



Phil. gloriosum



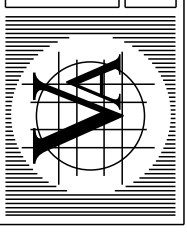
Mondo Grass

REVISIONS:

PROPOSED TWO STORY RESIDENCE FOR:
JESSAM INVESTMENTS LLC,
4301 PRAIRIE AVE
MIAMI BEACH, FL 33140
BRUNO HALIMI

ALL LANDSCAPE
DATA INC.
DERICK LANGEL
NO. LA6667045

VILLA & ASSOCIATES INC.
ARCHITECTURE - PLANNING - INTERIOR DESIGN
7344 SW 48 STREET - SUITE 201 - MIAMI, FLORIDA 33155
TEL. 305-661-8710 - FAX 305-661-8710 - E-Mail Villarchitects@att.net
CONSULTANT: ARCHI-TEK STUDIO CORP.
TEL. 305-799-8016 - E-Mail maguilar@architekstudio.com



DATE: 12-15-16
SCALE:
PROJECT NO:
DRAWING NO:
L-4 OF 6

NOTES:

1.

All mechanical equipment including, but not limited to Back Flow Preventor, Pumps, Electric, Phone or Cable Boxes, Lift Stations, Etc. shall be screened on 3 sides from view using an approved hedge, fence or wall.
2.

All light poles if any shown on plan shall be a minimum of 15' from tree locations.
3.

The Landscape Architect must be notified when the plant material has been set in place to approve final locations, prior to installation.

GENERAL NOTES

1.

Landscape Contractor is responsible for verifying locations of all underground and overhead utilities and easements prior to commencing work. All Utility companies and/or the General Contractor shall be notified to verify utility locations prior to digging. Utility trenching is to be coordinated with the Landscape plans prior to beginning of project. The Owner or Landscape Architect shall not be responsible for damage to utility or irrigation lines.
2.

Landscape Contractor shall examine the site and become familiar with conditions affecting the installation prior to submitting bids. Failure to do so shall not be considered cause for change orders.
3.

Landscape Contractor is responsible for verifying all plant quantities prior to bidding and within (7) seven calendar days of receipt of these plans shall notify the Landscape Architect in writing of any and all discrepancies. In case of discrepancies planting plans shall take precedence over plant list.
4.

No substitutions are to be made without prior consent of the Landscape Architect. Plant material supply is the responsibility of the Landscape Contractor, and he/she shall take steps to insure availability at time of planting.
5.

All plant material shall meet or exceed the size on the plant list. In all cases meeting the height and the spread specifications shall take precedence over container size.
6.

All planted areas to be outfitted with automatic irrigation system providing 100% coverage and 50% overlap. A rain sensor must be part of the irrigation system.
7.

Landscape Contractor shall be responsible for providing temporary hand watering to all proposed & landscape areas, during construction.
8.

The Landscape Contractor is responsible for coordinating tree and palm removals and transplants shown on the Tree/Palm Disposition Plan. The Landscape Contractor is to remove and discard from site existing unwanted trees, palms, shrubs, groundcover's, sod and weeds within landscape areas.
9.

All limestone shall be removed from planting beds prior to installation of plant material
10.

All permitting and fees to be the responsibility of the Contractor.

Landscape General Notes

PLANTING NOTES

1.

Landscape Contractor shall furnish and install all trees, palms, shrubs, groundcover, sod, planting soil, herbicide, preemergence herbicide, seed, and mulch. Landscape Contractor to provide Landscape Architect with at least 5 days notice prior to tree installation.
City Urban Forester and or Greenspace Management Division staff to approve all ROW trees, palms and plant material before it is planted to ensure Florida Grade No. 1 status
2.

Landscape Contractor shall guarantee all plant material for a period of one year from the day of final acceptance by the Landscape Architect.
3.

All plant material shall be Florida #1 or better, as defined in the Grades and Standards for Nursery Plants, Part I and II by the State of Florida Department of Agriculture.
4.

Landscape Contractor is responsible for scheduling a nursery visit for Landscape Architect to approve all trees, palms and shrubs prior to delivery to the project site. Any substitutions in size and/or plant material must be approved by the Landscape Architect, City Urban Forester and or applicable City Staff.
5.

Landscape Architect shall be notified 5 days min. prior nursery visit.
6.

Landscape Contractor shall coordinate his work with that of the Irrigation and Landscape Lighting Contractor.
7.

The Landscape Contractor shall treat planted areas with preemergence herbicide after weeds and grass have been removed. Landscape Contractor shall apply pre emergent herbicide per manufacturer's recommendation, wait period prior to planting as specified. Planting soil mix/backfill shall be clean and free of construction debris, weeds, rock and noxious pests and disease.
8.

All soil mix in plant beds for ground covers, shrubs, palms and trees shall be as per details. All other areas shall be dressed with a minimum of 4" topsoil "if required".
9.

All planting areas and planting pits shall be tested for sufficient percolation prior to final planting and irrigation installation to ensure proper drainage. Plant beds in parking lots and in areas compacted by heavy equipment shall be de-compacted so that drainage is not impeded.
10.

All synthetic burlap, string, cords or wire baskets shall be removed before trees are planted, without breaking the soil ball. All synthetic tape shall be removed from branches and trunks prior to final acceptance. The top 1/3 of natural burlap shall be removed, after the tree is set in the planting hole and before the tree is backfilled. Landscape Contractor is to check for root defects including deep planting in the root ball and circling roots, trees with root problems will not be accepted.
11.

Landscape Contractor is responsible for mulching all plant beds and planters with a minimum 3" layer of natural color Eucalyptus or Enviromulch immediately after planting. In no case shall Cypress mulch be used.
12.

All Trees/Palms in sod areas are to receive a 48" diameter mulched saucer at the base of the trunk respectively.
13.

Landscape Contractor shall guy and stake all trees and palms as per specifications and details. No nails, screws or wiring shall penetrate the outer surface of trees and palms. All guying and staking shall be removed twelve months after planting.
14.

All palm and tree guy wires and bracing are to be flagged for visibility, for their duration. All unattended and unplanted tree pits shall be properly barricaded and flagged during construction.
15.

All broken branches and clear trunk branches on street trees are to be pruned according to ANSI A - 300 Guidelines for Tree Pruning to min. 5' - 0" height clearance to the base of canopy.
16.

Landscape Contractor shall fertilize plant material as needed to support optimum healthy plant growth. All fertilization shall be performed in compliance with the latest ANSI A300 (Part 2) Standards.
17.

Stake all trees and palms for approval by Landscape Architect prior to installation. All guying and staking shall be removed from all trees and palms within twelve months after planting. Exceptions require written authorization from the City Urban Forester.
18.

Any sod areas damaged by construction are to be replaced with St. Augustine 'Floratam' sod.
19.

St. Augustine 'Floratam' - Contractor's responsibility to verify quantity.
20.

Install rootbarrier as per manufacturer's recommendation on all large trees that are 6' or closer to any pavement or building, as shown on details page.
21.

Root barrier shall be Vespro Inc. or approved equal.
22.

A final onsite inspection shall be required with Greenspace Management staff prior to any official acceptance of ROW plant material, in order to verify proper planting depth, spacing and quality of the material. Failure to conduct the inspection could result in rejection of the plant material.
23.

All trees and palms shall have a 1-year survival warranty starting from the date of final inspection.
24.

Landscape contractor is responsible for verifying location of all underground utilities and easements prior to commencing work. Landscape Contractor must proceed very carefully with the excavations, the Owner or Landscape Architect shall not be responsible for damage to utility lines.

REVISIONS :					

PROPOSED TWO STORY RESIDENCE FOR:

JESSAM INVESTMENTS LLC,
4301 PRAIRIE AVE
MIAMI BEACH, FL 33140

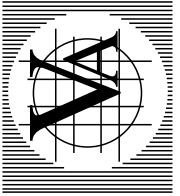
BRUNO HALIMI

ALL LANDSCAPE
DATA INC.

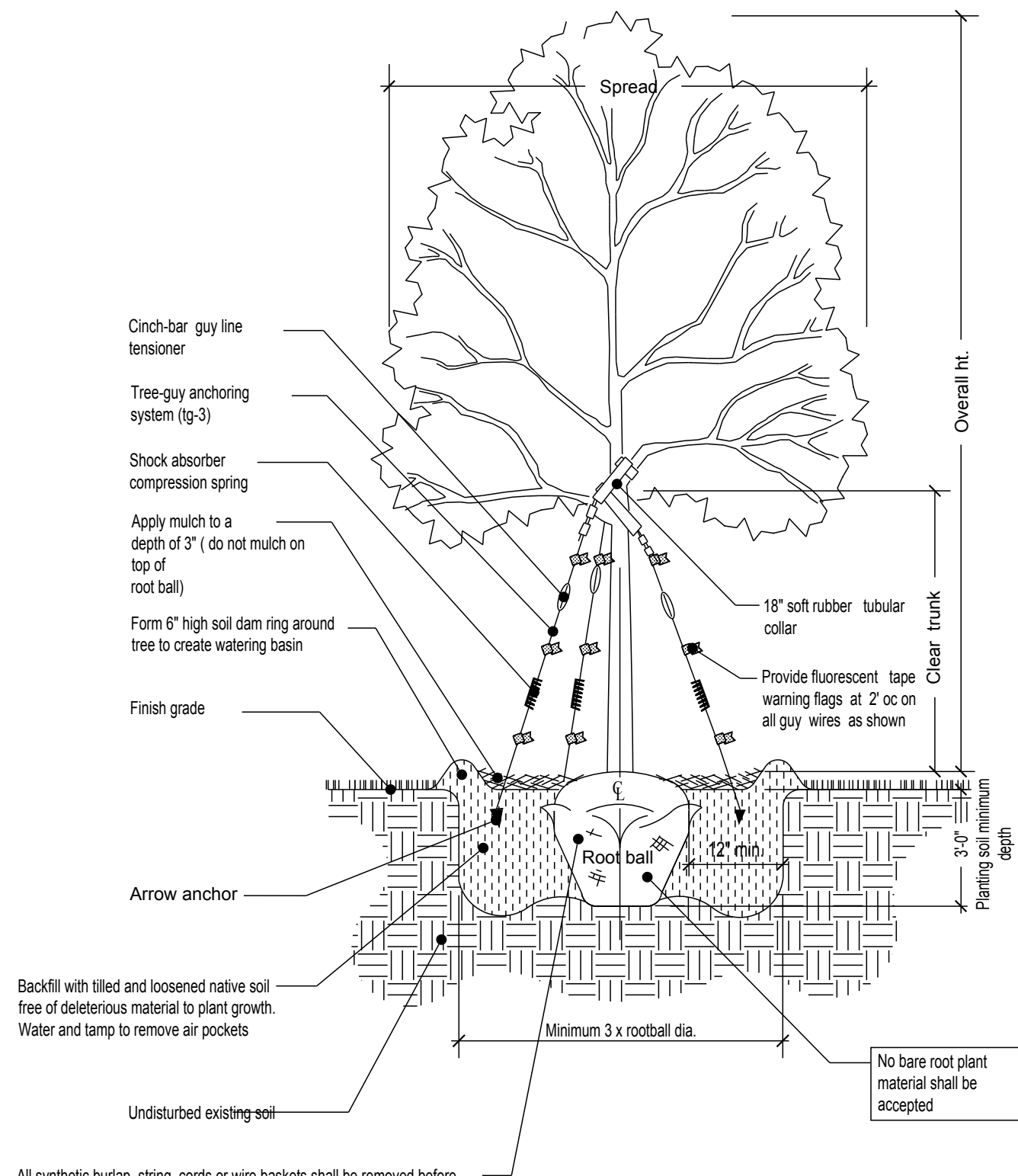
DERICK LANGEL
NO. LA6667045

VILLA & ASSOCIATES INC.
ARCHITECTURE - PLANNING - INTERIOR DESIGN
7344 SW 48 STREET - SUITE 201 - MIAMI, FLORIDA 33155
TEL. 305-661-8181 - FAX 305-661-8710 - E-Mail Villarchitects@att.net

CONSULTANT : ARCHI-TEK STUDIO CORP.
TEL. 305-798-8016 - E-Mail maguilar@architekstudio.com

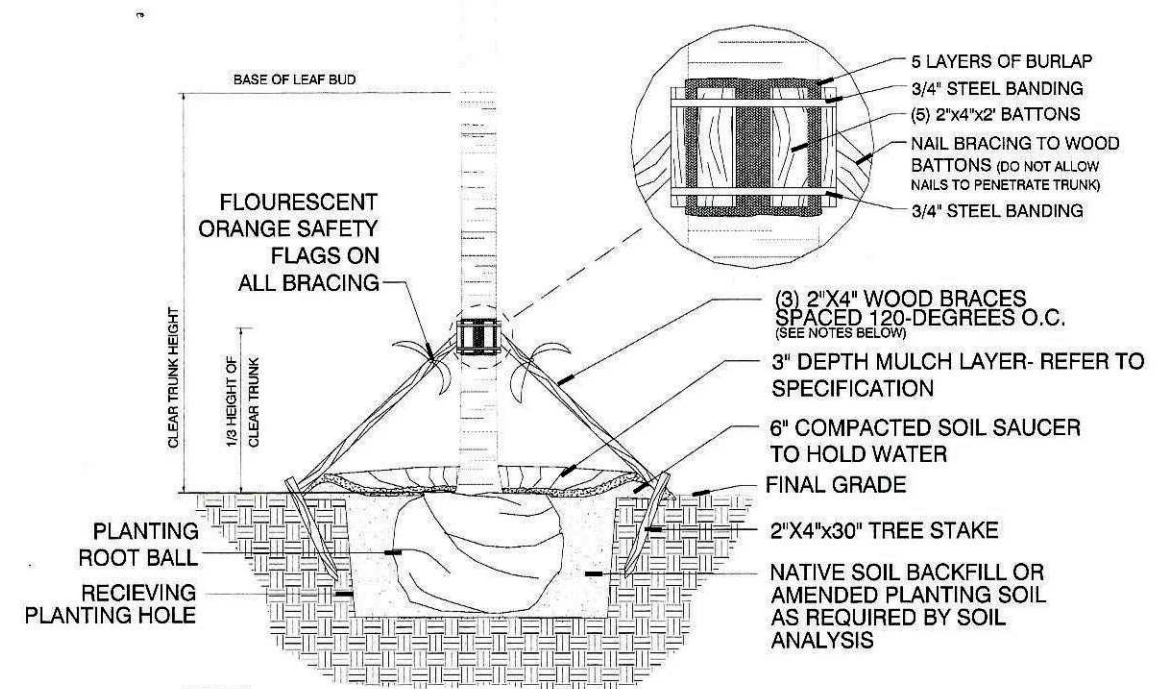


DATE: 12-15-16	SCALE:
PROJECT NO:	
DRAWING NO: L-5 OF 6	



All synthetic burlap, string, cords or wire baskets shall be removed before trees are planted, without breaking the soil ball. All synthetic tape shall be removed from branches and trunks prior to final acceptance. The top 1/3 of natural burlap shall be removed, after the tree is set in the planting hole and before the tree are backfilled.

Tree guy anchoring system supplier: U.S. Rigging Supply 4001 w.
Carriage Dr.,
Santa Ana, CA 92704
(800)624-1116 fax (714) 545-3311



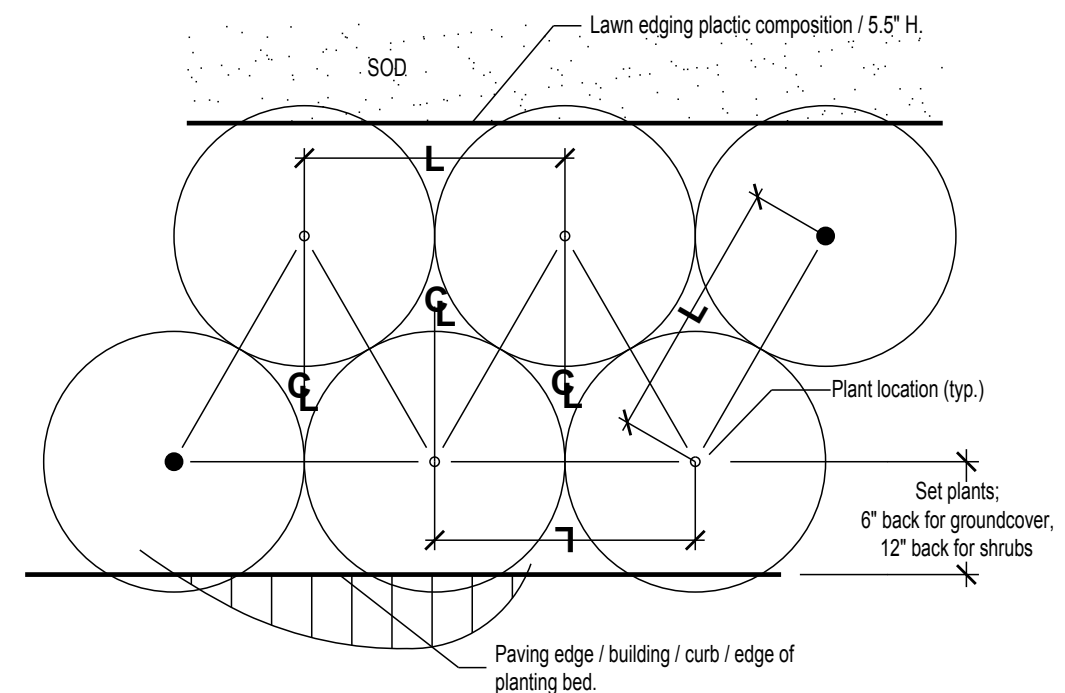
NOTES:

1. PALMS OVER 30' GW HEIGHT, USE MINIMUM (4) 4X4 BRACING AND STAKES.
2. PRIMARY STAKES SHOULD BE PLACED PARALLEL TO WALKWAYS WHENEVER POSSIBLE.
3. RECEIVING PLANTING HOLE SHALL BE APPROXIMATELY 1/3 LARGER THAN ROOTBALL.
4. BUD SHALL BE PERPENDICULAR TO THE GROUND PLANE.
5. TRUNK SHALL BE STRAIGHT AND WITHOUT CURVES.
6. NO BRACKETED OR BLACKENED TRUNKS.
7. AMENDED SOIL MIX, TO BE ADDED AT THE TIME OF PLANTING IF NEEDED, SHALL CONSIST OF A RATIO MIX OF 80% CLEAN SILICA SAND AND 20% SCREENED, PULVERIZED TOPSOIL AS NEEDED.

City of Miami Beach
Typical Palm Planting Detail
N.T.S.

Notes:

- Spacing diagram refers to all planting unless noted otherwise
- L= Spacing as called for in planting plan and plant list



Shrubs Planting Detail

REVISIONS :	

PROPOSED TWO STORY RESIDENCE FOR:

JESSAM INVESTMENTS LLC,
4301 PRAIRIE AVE
MIAMI BEACH, FL. 33140

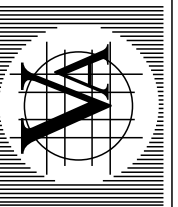
BRUNO HALIMI

**ALL LANDSCAPE
DATA INC.**

DERICK LANGEL
NO. LA6667045

VILLA & ASSOCIATES - PLANNING - INTERIOR DESIGN INC.
ARCHITECTURE - SUITE 201 - MIAMI, FLORIDA 33155
7344 SW 48 STREET
TEL. 305-661-8181 - FAX 305-661-8710 - E-Mail Villaarchitects@att.net

CONSULTANT: **ARCHI-TEK STUDIO CORP.**
TEL. 305-799-8016 - E-Mail maguilar@architekstudio.com



DATE:	SCALE:
12-15-16	

PROJECT NO:	
-------------	--

DRAWING NO:
I-6 OF 6