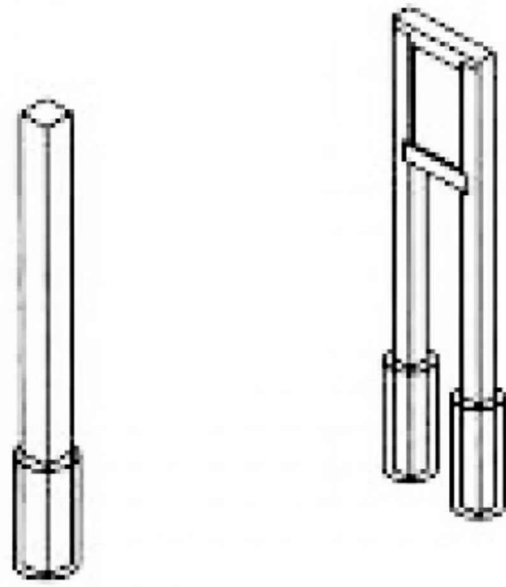
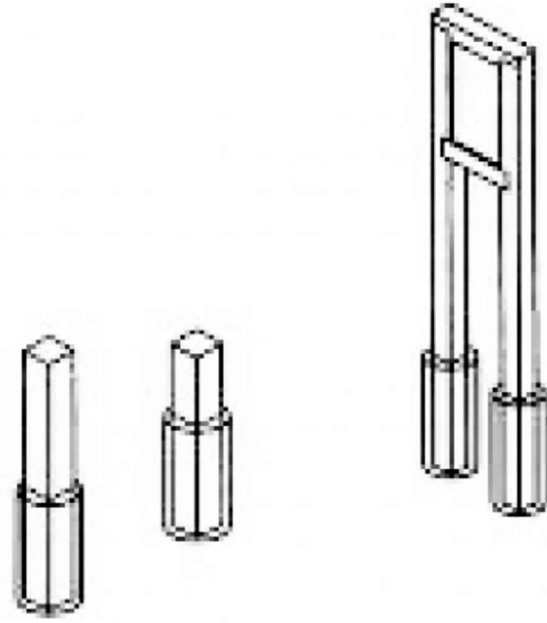


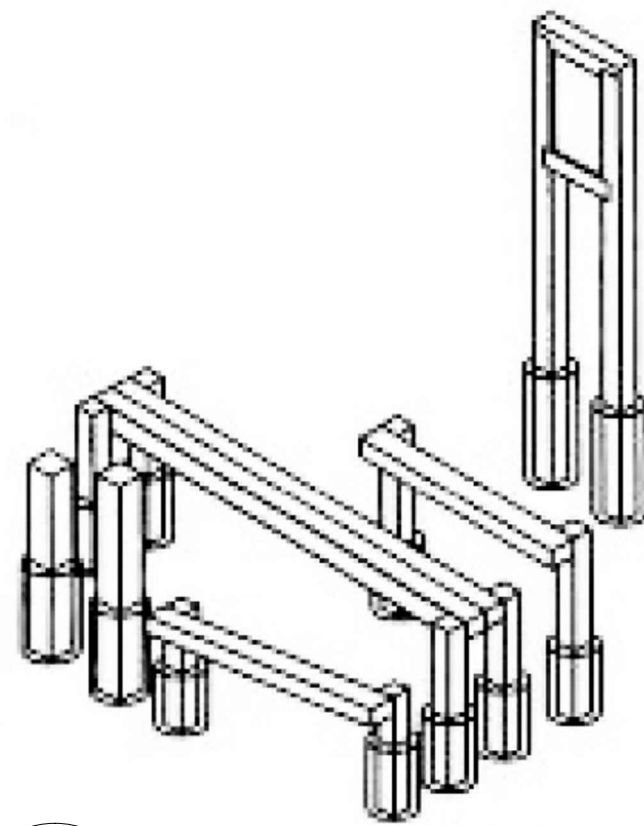
1 FIT TRAIL STATION- INTRODUCTORY SIGNS
- NTS



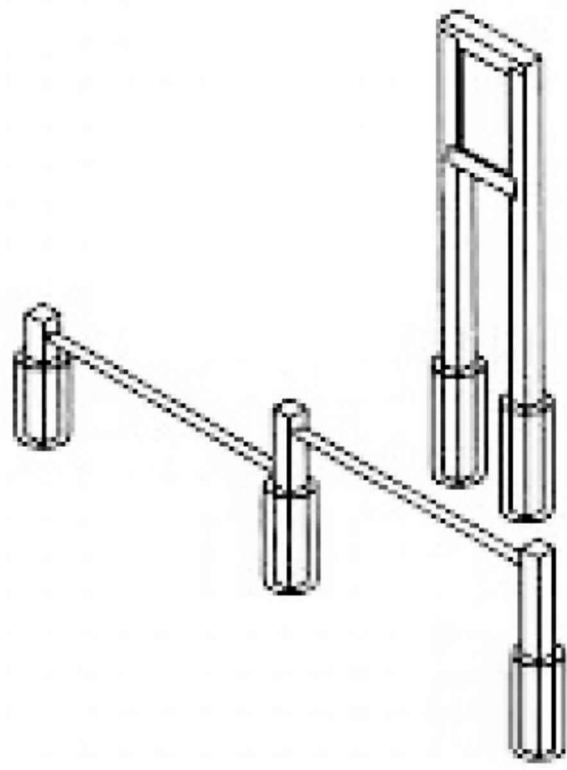
2 FIT TRAIL STATION- FITNESS FACT/ CALF STRETCH
- NTS



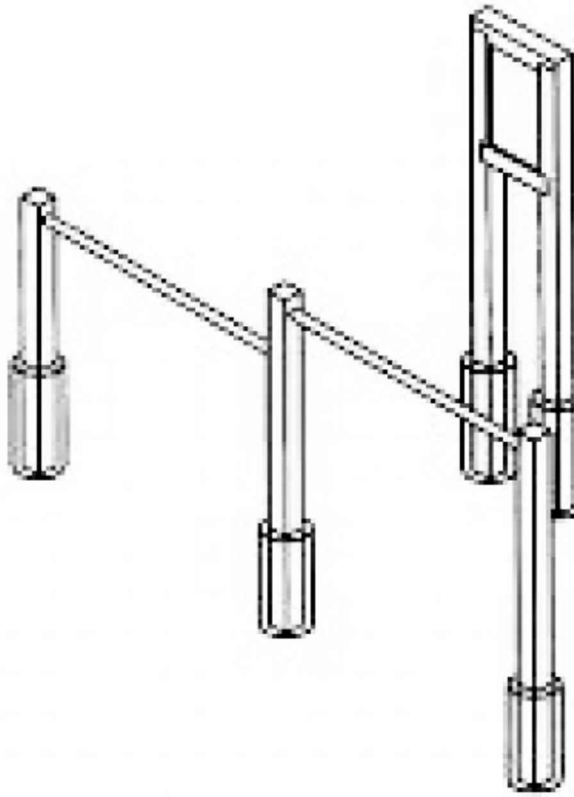
3 FIT TRAIL STATION- HAMSTRING/QUADRICEP STRETCH
- NTS



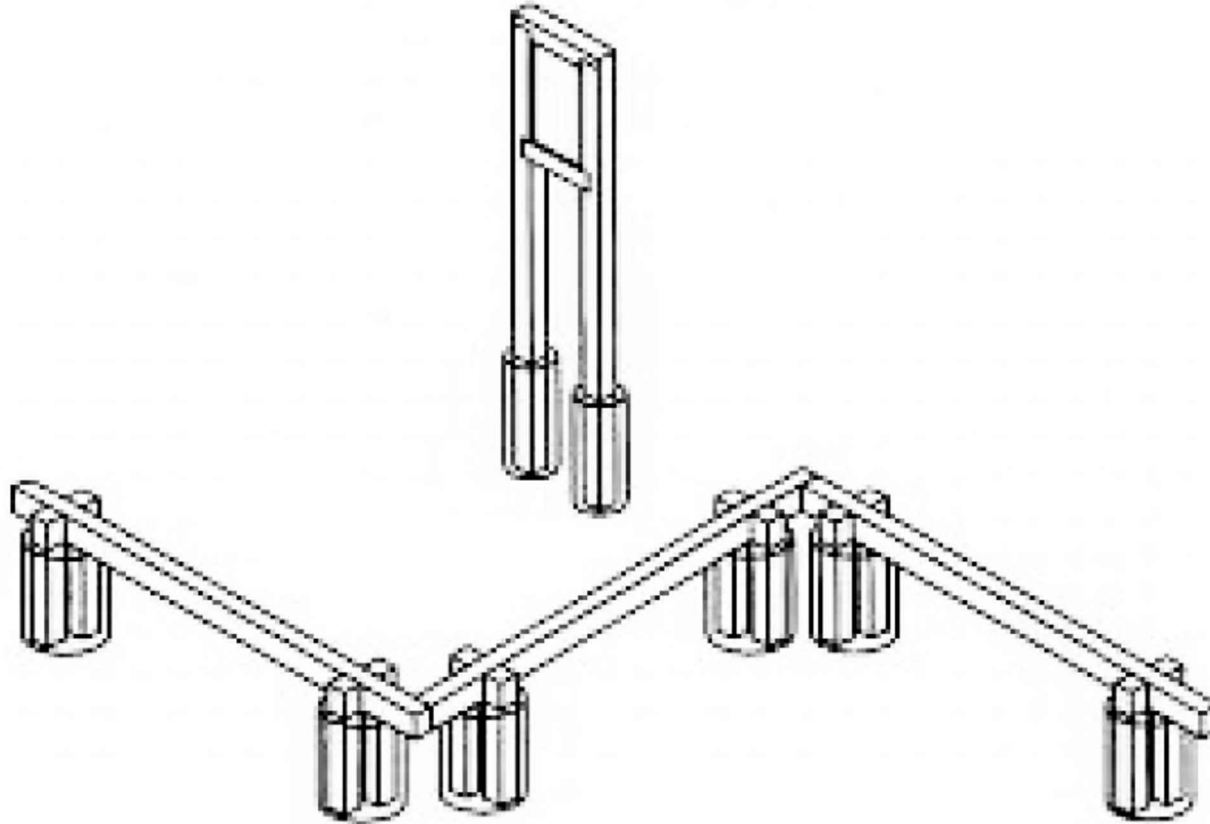
4 FIT TRAIL STATION- SIT UP/ LEG RAISE
- NTS



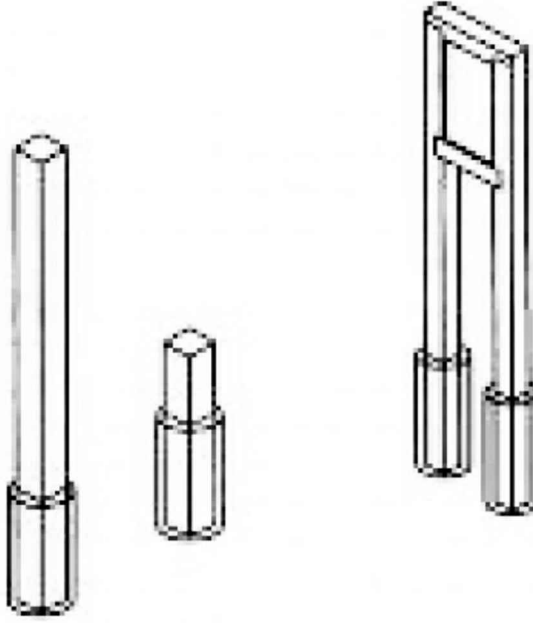
5 FIT TRAIL STATION- LEG STRETCH/ PUSH UP
- NTS



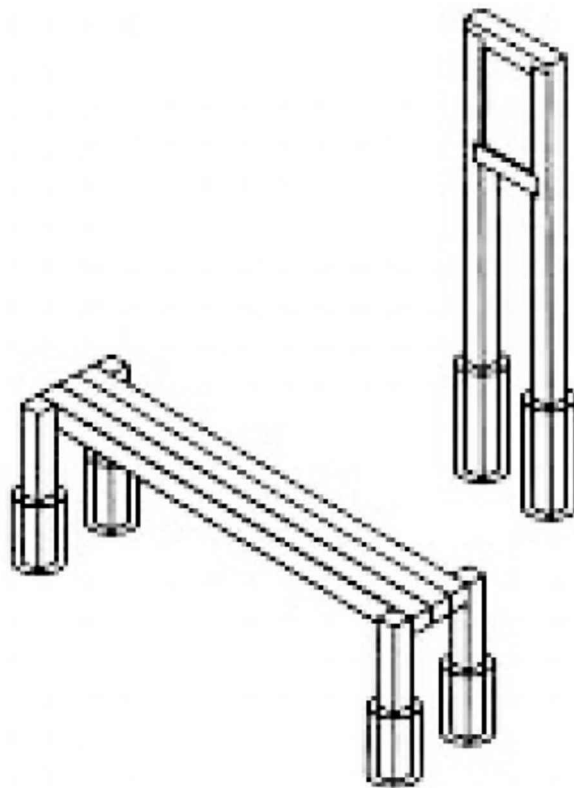
6 FIT TRAIL STATION- BODY RAISE/ REVERSE PULL-UP
- NTS



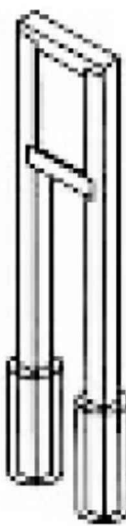
7 FIT TRAIL STATION- BALANCE WALK/HEARTBEAT CHECK
- NTS



8 FIT TRAIL STATION- SIDE BEND/ LEG STRETCH
- NTS



9 FIT TRAIL STATION- HAMSTRING PULL/LIFT & DROP
- NTS



10 FIT TRAIL STATION- TENSION RELEASE
- NTS

NOTE:
BASIS OF DESIGN PRODUCT:FIT TRAIL BY
SOUTHWOOD CORPORATION
WOOD TYPE: IPE (PER PLANNING DEPT DIRECTIVE)

CLIENT:
MIAMI BEACH
CITY OF MIAMI BEACH
1700 CONVENTION CENTER DRIVE
MIAMI BEACH, FL 33139

PRIME CONSULTANT:

Calvin, Giordano & Associates, Inc.
1800 Eller Drive, Suite 600, Fort Lauderdale, Florida 33316
Phone: 954.321.7791 • Fax: 954.321.9807
CERTIFICATES OF AUTHORIZATION:
LANDSCAPE ARCHITECTURE: LC00000339
ENGINEERING: 514
SURVEYING: 6791

SERVICES PROVIDED:
LANDSCAPE ARCHITECTURE
CIVIL ENGINEERING
COASTAL ENGINEERING
ELECTRICAL ENGINEERING
SURVEYING & MAPPING
COST ESTIMATING

CONCEPTUAL DESIGNER:
WEST 8
333 HUDSON STREET
SUITE 905
NEW YORK CITY, NY 10013

ARCHITECTURAL CONSULTANT:
SYNALOVSKI ROMANIK SAYE, LLC
1800 ELLER DRIVE
SUITE 500
FORT LAUDERDALE, FL 33316
FIRM LICENSE: AA26001863

GEOTECHNICAL CONSULTANT:
NUTTING ENGINEERS OF FLORIDA, INC.
2051 NW 112TH AVENUE
SUITE 120
MIAMI, FL 33176
CERTIFICATE OF AUTHORIZATION: XXXX

NORTH SHORE OPEN SPACE PARK

BETWEEN 79TH AND 87TH STREETS,
EAST OF COLLINS AVENUE

SEAL:

SUBMITTAL:
30% SD

SCALE:

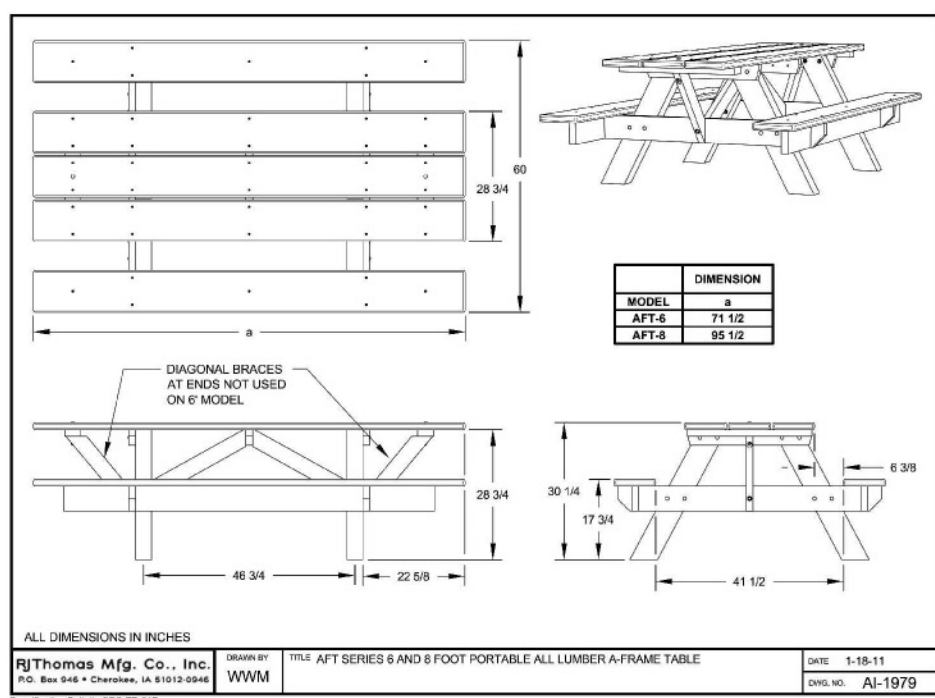
DATE:
NOV 14, 2016

CGA PROJECT NUMBER:

SHEET TITLE:
DETAILS - FURNISHINGS

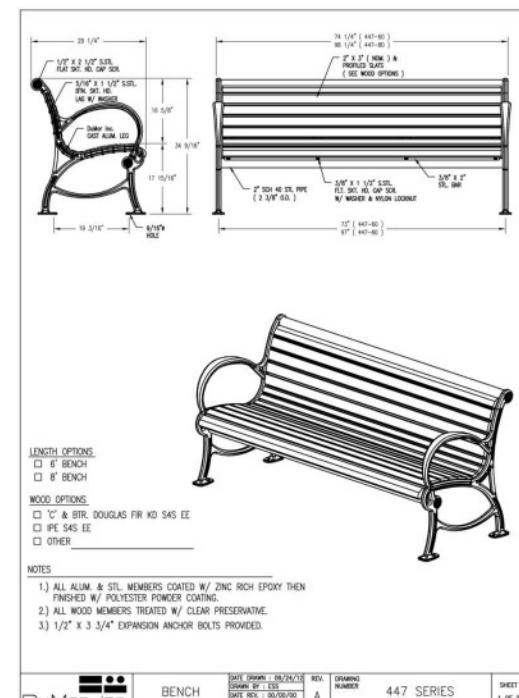
SHEET NUMBER:

L909



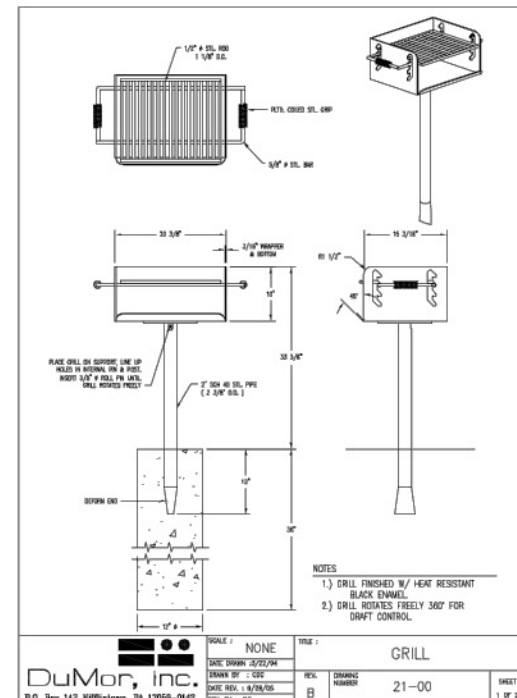
TO BE PROVIDED WITH MID-RAIL

1 A-FRAME WOODEN PICNIC TABLE - 6'
- NTS

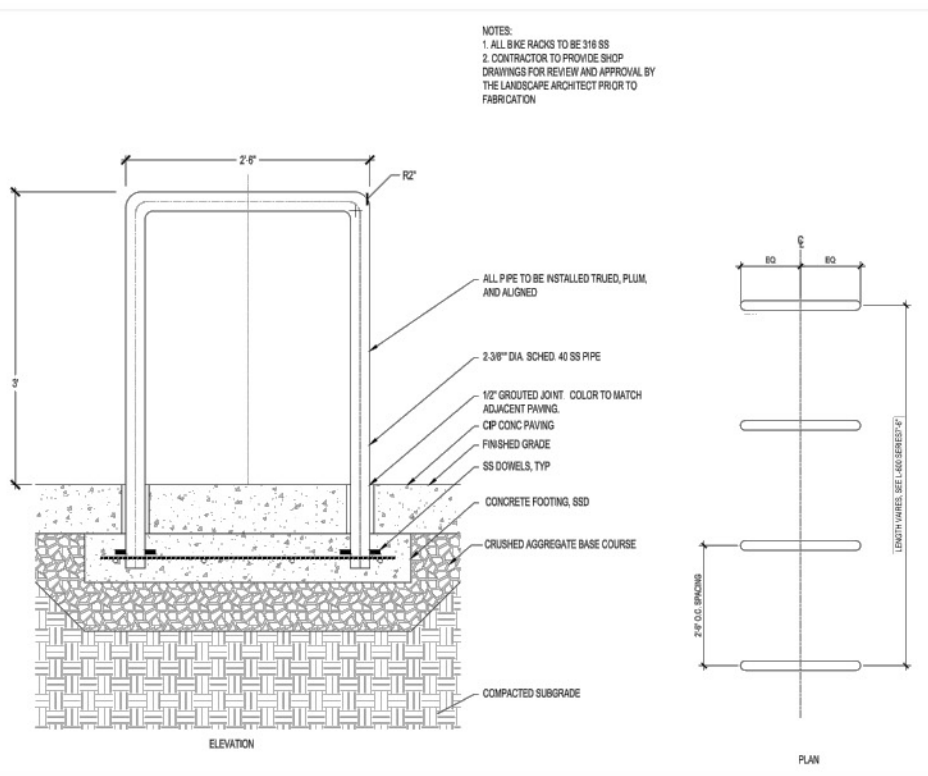


TO BE PROVIDED WITH MID-RAIL

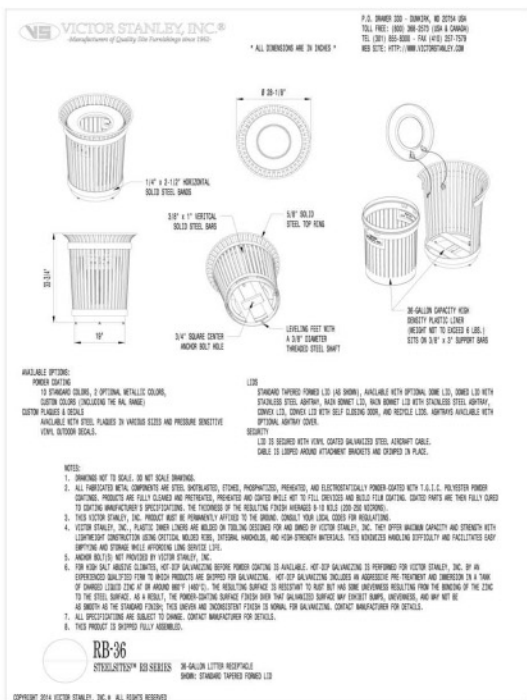
2 BENCH- 6'
- NTS



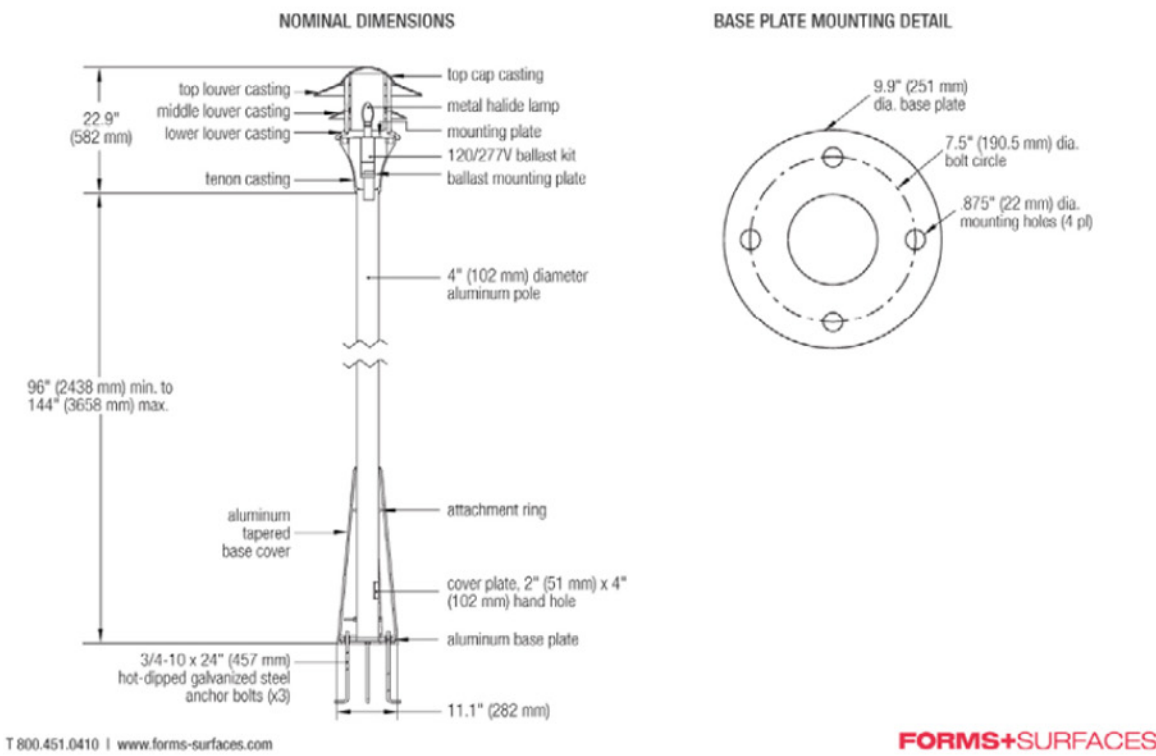
3 BBQ GRILL
- NTS



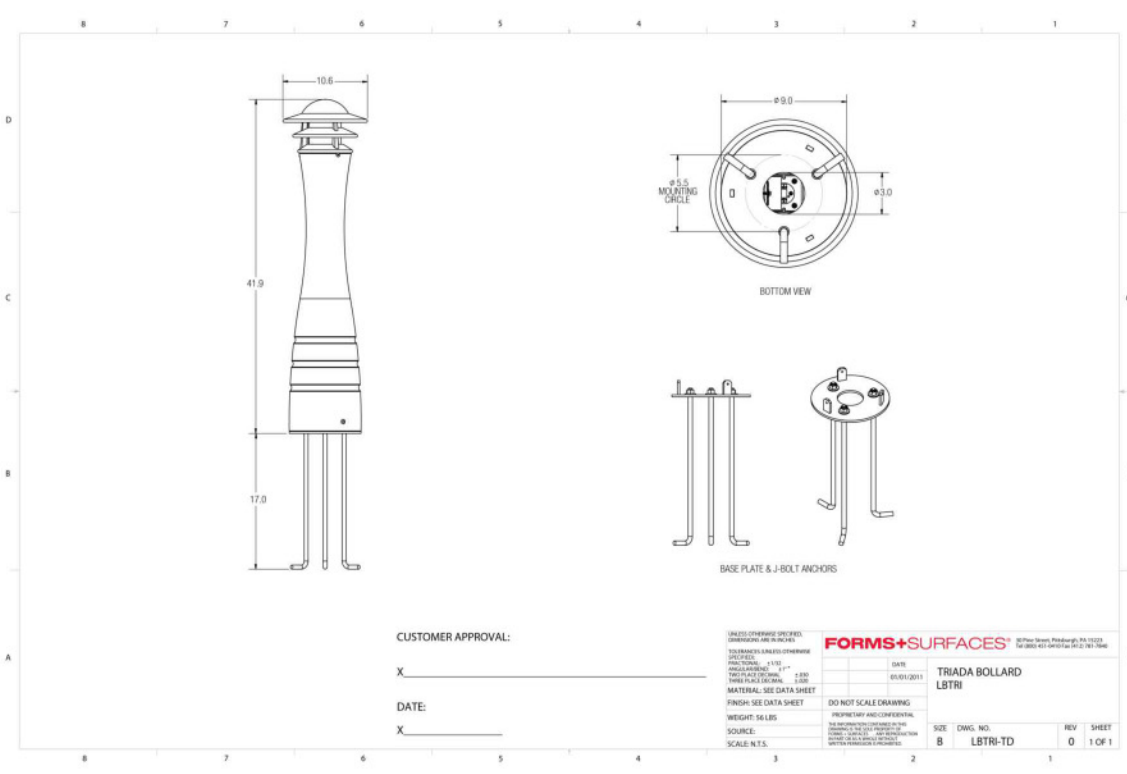
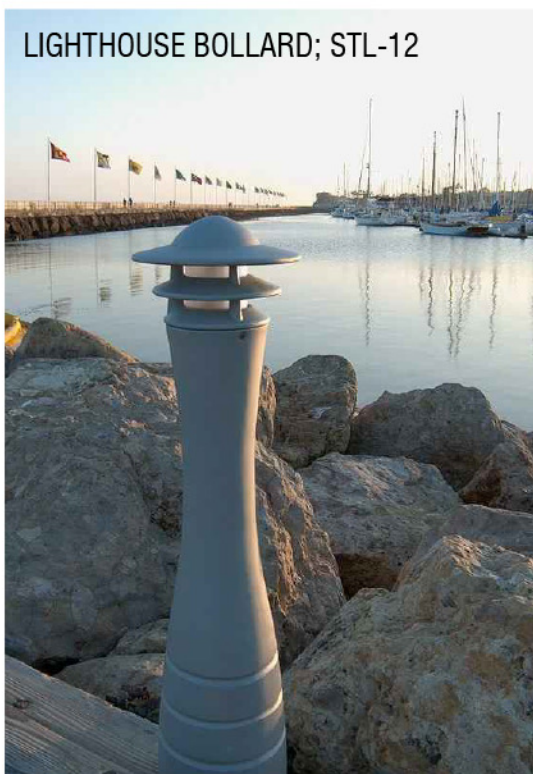
4 BICYCLE RACK
- NTS



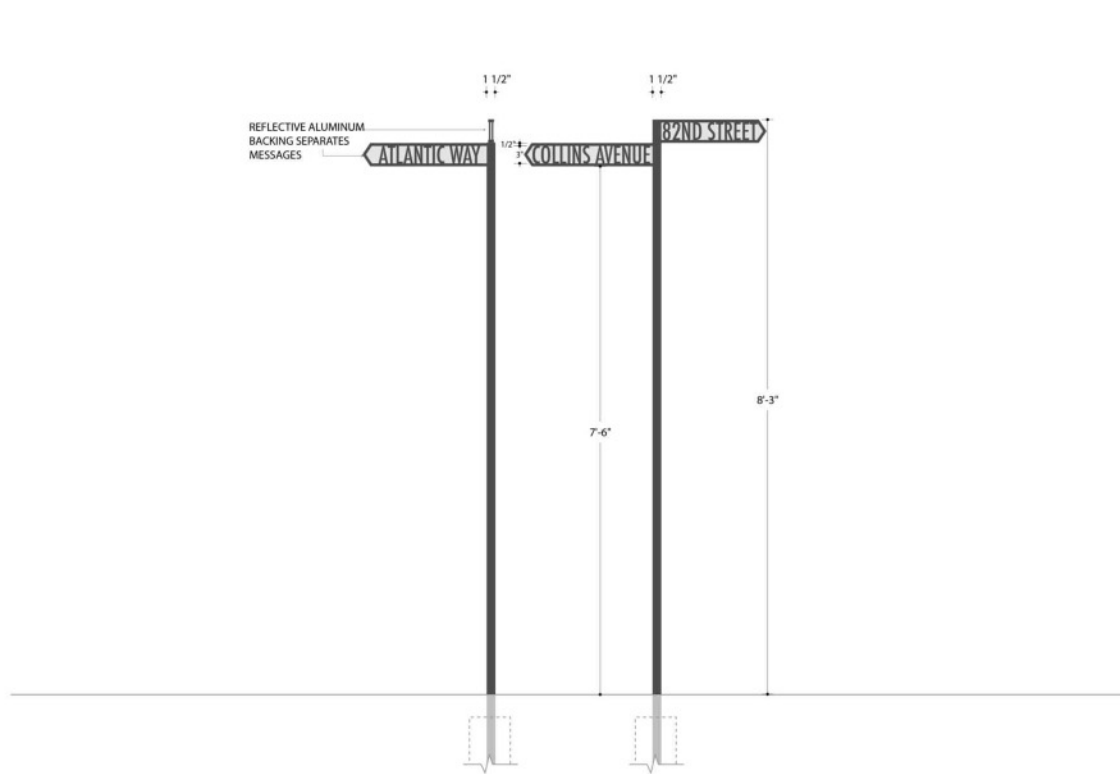
5 TRASH RECEPTACLE
- NTS



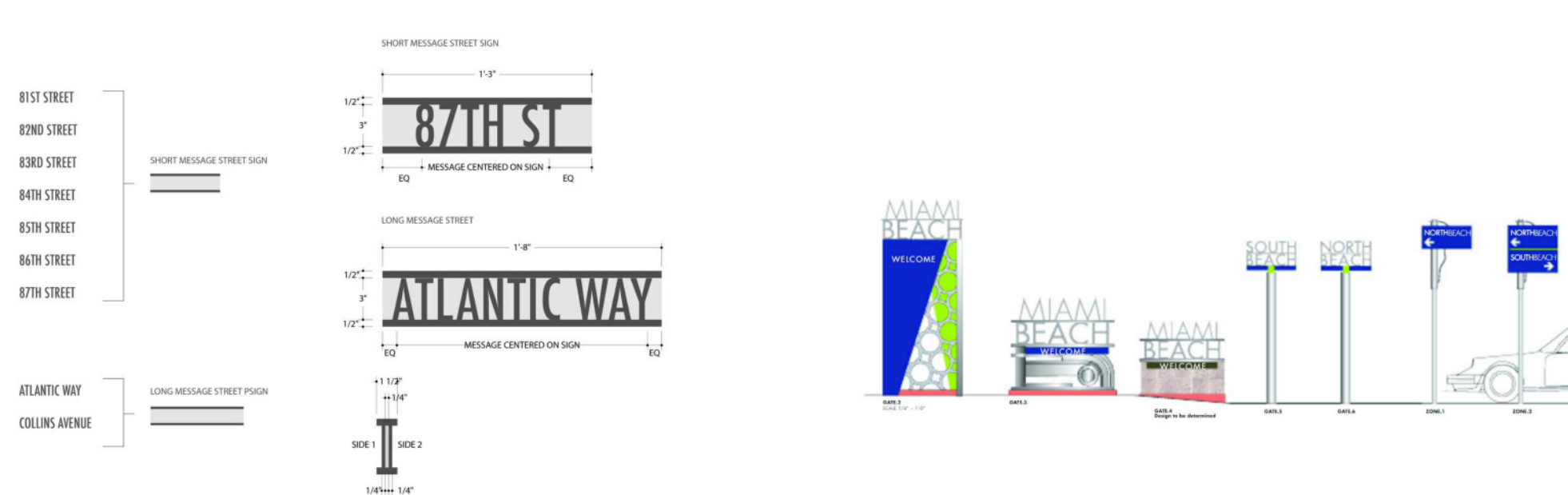
6 PEDESTRIAN LIGHT FIXTURE - PEDNING FFWCC AND FDEP APPROVAL
- NTS



7 BEACHWALK BOLLARD (TO MATCH CITY STANDARD)
- NTS



8 SIGNAGE
- NTS



9 SIGNAGE
- NTS

CLIENT:
MIAMI BEACH
CITY OF MIAMI BEACH
1700 CONVENTION CENTER DRIVE
MIAMI BEACH, FL 33139

PRIME CONSULTANT:

Calvin, Giordano & Associates, Inc.
8801 Eller Drive, Suite 600, Fort Lauderdale, Florida 33316
Phone: (954) 521-7791 • Fax: (954) 521-9807

CERTIFICATES OF AUTHORIZATION:
LANDSCAPE ARCHITECTURE: LC00000339
ENGINEERING: 514
SURVEYING: 6791

SERVICES PROVIDED:
LANDSCAPE ARCHITECTURE
CIVIL ENGINEERING
COASTAL ENGINEERING
ELECTRICAL ENGINEERING
SURVEYING & MAPPING
COST ESTIMATING

CONCEPTUAL DESIGNER:
WEST 8
333 HUDSON STREET
SUITE 905
NEW YORK CITY, NY 10013

ARCHITECTURAL CONSULTANT:
SYNALOVSKI ROMANIK SAYE, LLC
1800 ELLER DRIVE
SUITE 500
FORT LAUDERDALE, FL 33316
FIRM LICENSE: A242001863

GEOTECHNICAL CONSULTANT:
HUTTING ENGINEERS OF FLORIDA, INC.
2051 HWY 112TH AVENUE
SUITE 126
MIAMI, FL 33176
CERTIFICATE OF AUTHORIZATION: XXXX

NORTH SHORE OPEN SPACE PARK

BETWEEN 79TH AND 87TH STREETS,
EAST OF COLLINS AVENUE

SEAL:

REVISIONS:
1
2
3
4
5
6
7
8
9
10

SUBMITTAL:
30% SD

SCALE:

DATE:
NOV 14, 2016

CGA PROJECT NUMBER:

SHEET TITLE:
DETAILS - FURNISHINGS

SHEET NUMBER:

L910