

CLIENT:

**MIAMI BEACH**

CITY OF MIAMI BEACH  
1700 CONVENTION CENTER DRIVE  
MIAMI BEACH, FL 33139

PRIME CONSULTANT:

**Calvin, Giordano & Associates, Inc.**

1800 Eller Drive, Suite 600, Fort Lauderdale, Florida 33316  
Phone: (954) 521-7791 • Fax: (954) 521-9807

CERTIFICATES OF AUTHORIZATION:  
LANDSCAPE ARCHITECTURE: LC00000339  
ENGINEERING: 514  
SURVEYING: 6791

SERVICES PROVIDED:  
LANDSCAPE ARCHITECTURE  
CIVIL ENGINEERING  
COASTAL ENGINEERING  
ELECTRICAL ENGINEERING  
SURVEYING & MAPPING  
COST ESTIMATING

CONCEPTUAL DESIGNER:

**WEST 8**

333 HUDSON STREET  
SUITE 905  
NEW YORK CITY, NY 10013

ARCHITECTURAL CONSULTANT:

SYNALOVSKI ROMANIK SAYE, LLC

1800 ELLER DRIVE  
SUITE 500  
FORT LAUDERDALE, FL 33316  
FIRM LICENSE: AA26001863

GEOTECHNICAL CONSULTANT:

NUTTING ENGINEERS OF FLORIDA, INC.

2051 NW 112TH AVENUE  
SUITE 120  
MIAMI, FL 33176  
CERTIFICATE OF AUTHORIZATION: XXXX

**NORTH SHORE OPEN SPACE PARK**

BETWEEN 79TH AND 87TH STREETS,  
EAST OF COLLINS AVENUE

SEAL:

REVISIONS:

- 1
- 2
- 3
- 4
- 5
- 6
- 7
- 8
- 9
- 10

SUBMITTAL:

30% SD

SCALE:

1" = 100'-0" (1:100)

DATE:

NOV 14, 2016

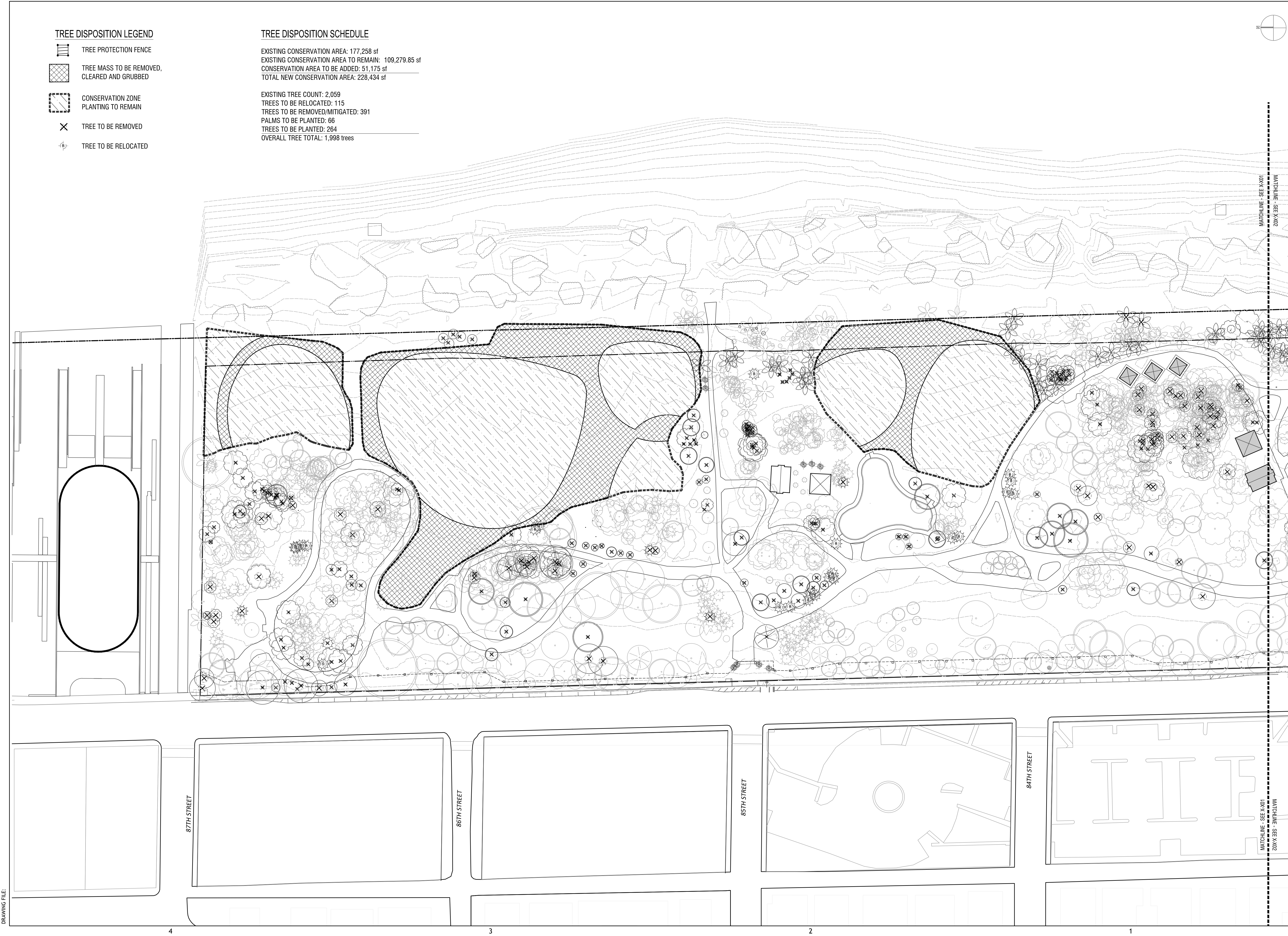
CGA PROJECT NUMBER:

SHEET TITLE:

TREE DISPOSITION KEY PLAN

SHEET NUMBER:

**D200**



TREE DISPOSITION LEGEND

- TREE PROTECTION FENCE
- TREE MASS TO BE REMOVED, CLEARED AND GRUBBED
- CONSERVATION ZONE PLANTING TO REMAIN
- TREE TO BE REMOVED
- TREE TO BE RELOCATED

TREE DISPOSITION SCHEDULE

EXISTING CONSERVATION AREA: 177,258 sf  
EXISTING CONSERVATION AREA TO REMAIN: 109,279.85 sf  
CONSERVATION AREA TO BE ADDED: 51,175 sf  
TOTAL NEW CONSERVATION AREA: 228,434 sf

EXISTING TREE COUNT: 2,059  
TREES TO BE RELOCATED: 115  
TREES TO BE REMOVED/MITIGATED: 391  
PALMS TO BE PLANTED: 66  
TREES TO BE PLANTED: 264  
OVERALL TREE TOTAL: 1,998 trees



CLIENT:  
**MIAMI BEACH**  
CITY OF MIAMI BEACH  
1700 CONVENTION CENTER DRIVE  
MIAMI BEACH, FL 33139



Calvin, Giordano &  
Associates, Inc.  
1800 Eller Drive, Suite 600, Fort Lauderdale,  
Florida 33316  
Phone: (954) 521-7791 • Fax: (954) 521-9807  
CERTIFICATES OF AUTHORIZATION:  
LANDSCAPE ARCHITECTURE: LC00000339  
ENGINEERING: 514  
SURVEYING: 6791

SERVICES PROVIDED:  
LANDSCAPE ARCHITECTURE  
CIVIL ENGINEERING  
COASTAL ENGINEERING  
ELECTRICAL ENGINEERING  
SURVEYING & MAPPING  
COST ESTIMATING

CONCEPTUAL DESIGNER:  
**WEST 8**  
333 HUDSON STREET  
SUITE 905  
NEW YORK CITY, NY 10013

ARCHITECTURAL CONSULTANT:  
SYNALOVSKI ROMANIK SAYE, LLC  
1800 ELLER DRIVE  
SUITE 500  
FORT LAUDERDALE, FL 33316  
FIRM LICENSE: AA26001863  
GEOTECHNICAL CONSULTANT:  
NUTTING ENGINEERS OF FLORIDA, INC.  
2051 NW 112TH AVENUE  
SUITE 120  
MIAMI, FL 33176  
CERTIFICATE OF AUTHORIZATION: XXXX

**NORTH SHORE OPEN SPACE PARK**  
BETWEEN 79TH AND 87TH STREETS,  
EAST OF COLLINS AVENUE

SEAL:

- REVISIONS:
- 1
  - 2
  - 3
  - 4
  - 5
  - 6
  - 7
  - 8
  - 9
  - 10

SUBMITTAL:  
30% SD

SCALE:  
1" = 50'-0" (1:50)

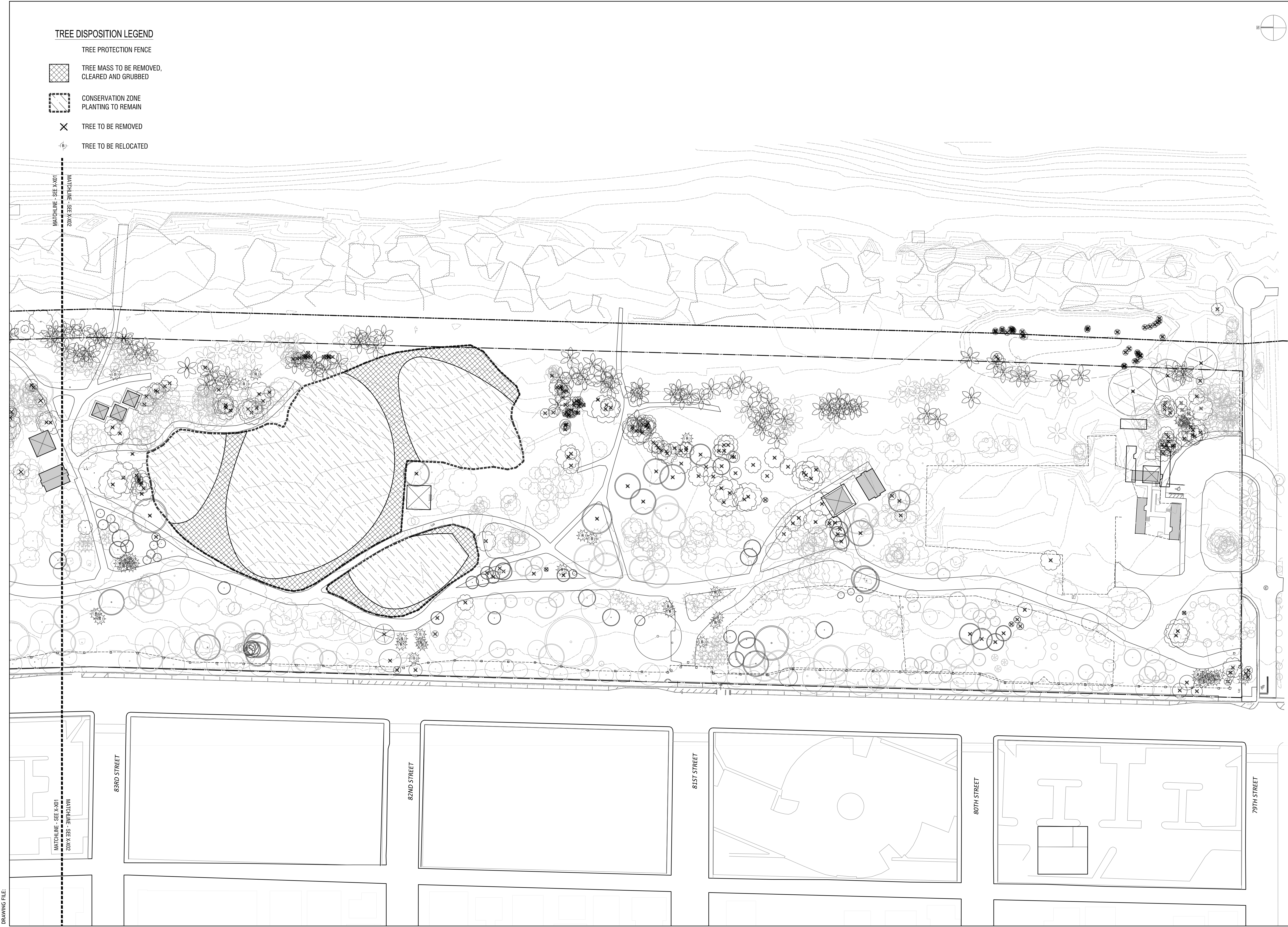
DATE:  
NOV 14, 2016

CGA PROJECT NUMBER:

SHEET TITLE:  
TREE DISPOSITION PLAN -  
TILE 1

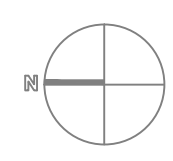
SHEET NUMBER:

**D201**



TREE DISPOSITION LEGEND

- TREE PROTECTION FENCE
- TREE MASS TO BE REMOVED, CLEARED AND GRUBBED
- CONSERVATION ZONE PLANTING TO REMAIN
- TREE TO BE REMOVED
- TREE TO BE RELOCATED



CLIENT:

**MIAMI BEACH**

CITY OF MIAMI BEACH  
1700 CONVENTION CENTER DRIVE  
MIAMI BEACH, FL 33139

PRIME CONSULTANT:

**Calvin, Giordano & Associates, Inc.**

1800 Eller Drive, Suite 600, Fort Lauderdale, Florida 33316  
Phone: (954) 521-7791 • Fax: (954) 521-9807  
CERTIFICATES OF AUTHORIZATION:  
LANDSCAPE ARCHITECTURE: LC00000339  
ENGINEERING: 514  
SURVEYING: 6791

SERVICES PROVIDED:  
LANDSCAPE ARCHITECTURE  
CIVIL ENGINEERING  
COASTAL ENGINEERING  
ELECTRICAL ENGINEERING  
SURVEYING & MAPPING  
COST ESTIMATING

CONCEPTUAL DESIGNER:

**WEST 8**

333 HUDSON STREET  
SUITE 905  
NEW YORK CITY, NY 10013

ARCHITECTURAL CONSULTANT:  
SYNALOVSKI ROMANIK SAYE, LLC

1800 ELLER DRIVE  
SUITE 500  
FORT LAUDERDALE, FL 33316  
FIRM LICENSE: AA26001863

GEOTECHNICAL CONSULTANT:  
NUTTING ENGINEERS OF FLORIDA, INC.

2051 NW 112TH AVENUE  
SUITE 120  
MIAMI, FL 33176  
CERTIFICATE OF AUTHORIZATION: XXXX

**NORTH SHORE OPEN SPACE PARK**

BETWEEN 79TH AND 87TH STREETS,  
EAST OF COLLINS AVENUE

SEAL:

REVISIONS:

1	
2	
3	
4	
5	
6	
7	
8	
9	
10	

SUBMITTAL:  
30% SD

SCALE:  
1" = 50'-0" (1:50)

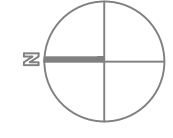
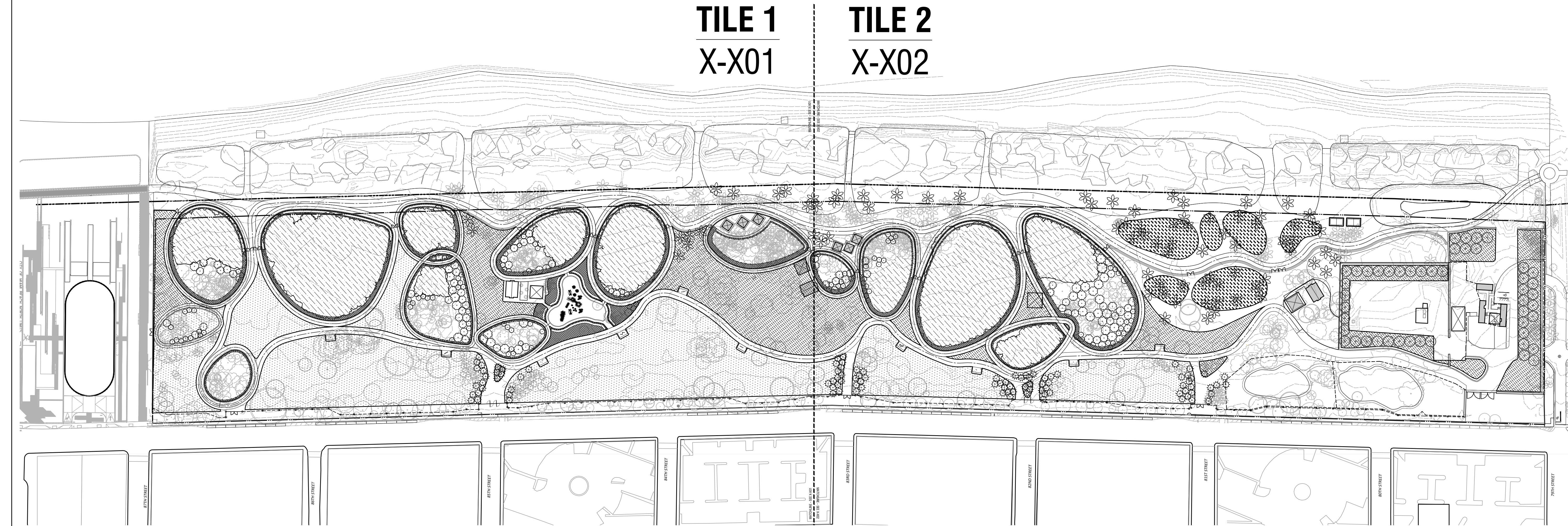
DATE:  
NOV 14, 2016

CGA PROJECT NUMBER:

SHEET TITLE:  
TREE DISPOSITION PLAN -  
TILE 2

SHEET NUMBER:  
**D202**

DRAWING FILE:



CLIENT:  
**MIAMI BEACH**  
CITY OF MIAMI BEACH  
1700 CONVENTION CENTER DRIVE  
MIAMI BEACH, FL 33139

PRIME CONSULTANT:  
  
**Calvin, Giordano & Associates, Inc.**  
1800 Eller Drive, Suite 600 Fort Lauderdale, Florida 33316  
Phone: (954) 521-7791 • Fax: (954) 521-9807  
CERTIFICATES OF AUTHORIZATION:  
LANDSCAPE ARCHITECTURE: LC00000339  
ENGINEERING: 514  
SURVEYING: 6791

SERVICES PROVIDED:  
LANDSCAPE ARCHITECTURE  
CIVIL ENGINEERING  
COASTAL ENGINEERING  
ELECTRICAL ENGINEERING  
SURVEYING & MAPPING  
COST ESTIMATING

CONCEPTUAL DESIGNER:  
**WEST 8**  
333 HUDSON STREET  
SUITE 905  
NEW YORK CITY, NY 10013

ARCHITECTURAL CONSULTANT:  
SYNALOVSKI ROMANIK SAYE, LLC  
1800 ELLER DRIVE  
SUITE 500  
FORT LAUDERDALE, FL 33316  
FIRM LICENSE: AA26001863

GEOTECHNICAL CONSULTANT:  
NUTTING ENGINEERS OF FLORIDA, INC.  
2051 NW 112TH AVENUE  
SUITE 126  
MIAMI, FL 33176  
CERTIFICATE OF AUTHORIZATION: XXXX

**NORTH SHORE OPEN SPACE PARK**  
B  
BETWEEN 79TH AND 87TH STREETS,  
EAST OF COLLINS AVENUE

SEAL:

REVISIONS:  
1  
2  
3  
4  
5  
6  
7  
8  
9  
10

SUBMITTAL:  
30% SD

SCALE:  
1" = 100'-0" (1:100)


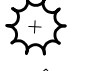



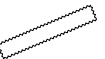
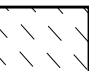




DATE:  
NOV 14, 2016

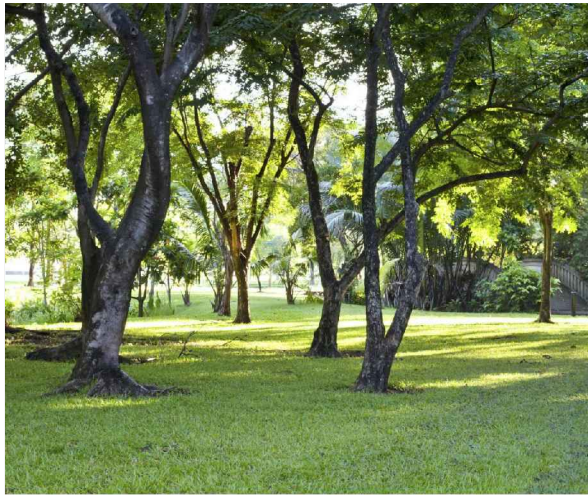
CGA PROJECT NUMBER:

SHEET TITLE:  
PLANTING KEY PLAN

SHEET NUMBER:  
**L400**

PLANTING LEGEND

-  PROPOSED SEAGRAPE
-  PROPOSED SABAL PALM
-  PROPOSED COCONUT PALM
-  PROPOSED NATIVE TREE
-  EXISTING TREE/PALM TO REMAIN
-  PROPOSED HEDGE PLANTING
-  PROPOSED DUNE PLANTING
-  PROPOSED PERENNIAL PLANTING
-  PROPOSED TURF/SAND MIX
-  PROPOSED TURF PLANTING
-  EXISTING CONSERVATION ZONE



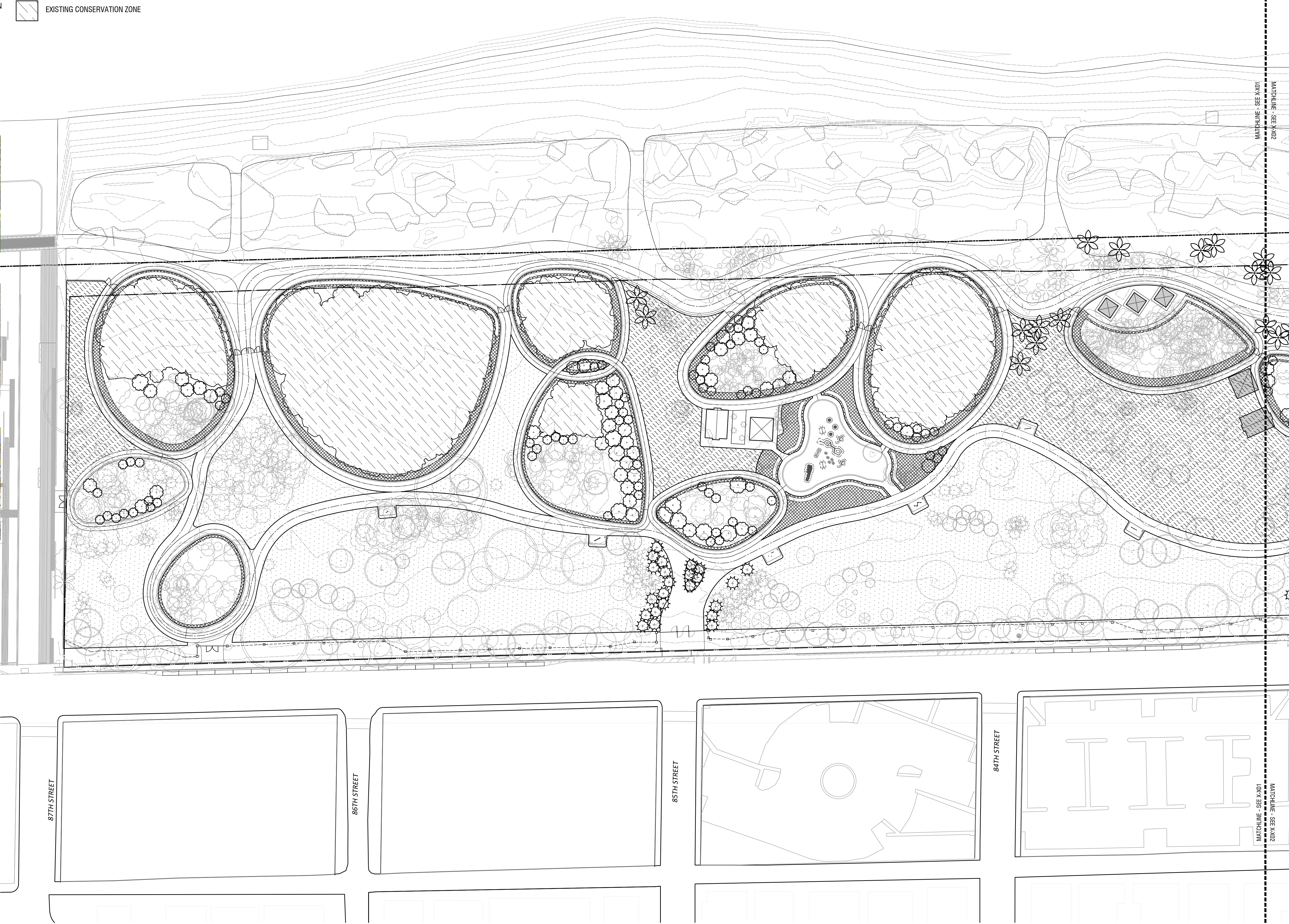
LAWN /HARDWOOD HAMMOCK  
PLANTING CHARACTER



SEAGRAPE CONSERVATION RING  
PLANTING CHARACTER



DUNESCAPE PLANTING CHARACTER



CLIENT:

**MIAMI BEACH**

CITY OF MIAMI BEACH  
1700 CONVENTION CENTER DRIVE  
MIAMI BEACH, FL 33139

PRIME CONSULTANT:



Calvin, Giordano &  
Associates, Inc.

1800 Eller Drive, Suite 600, Fort Lauderdale,  
Florida 33316  
Phone: (954) 521-7791 • Fax: (954) 521-9807

CERTIFICATES OF AUTHORIZATION:  
LANDSCAPE ARCHITECTURE: LC00000339  
ENGINEERING: 514  
SURVEYING: 6791

SERVICES PROVIDED:  
LANDSCAPE ARCHITECTURE  
CIVIL ENGINEERING  
COASTAL ENGINEERING  
ELECTRICAL ENGINEERING  
SURVEYING & MAPPING  
COST ESTIMATING

CONCEPTUAL DESIGNER:  
**WEST 8**

333 HUDSON STREET  
SUITE 905  
NEW YORK CITY, NY 10013

ARCHITECTURAL CONSULTANT:  
SYNALOVSKI ROMANIK SAYE, LLC

1800 ELLER DRIVE  
SUITE 500  
FORT LAUDERDALE, FL 33316  
FIRM LICENSE: AA26001863

GEOTECHNICAL CONSULTANT:  
NUTTING ENGINEERS OF FLORIDA, INC.

2051 NW 112TH AVENUE  
SUITE 120  
MIAMI, FL 33176  
CERTIFICATE OF AUTHORIZATION: XXXX

**NORTH  
SHORE  
OPEN  
SPACE  
PARK**

BETWEEN 79TH AND 87TH STREETS,  
EAST OF COLLINS AVENUE

- SEAL:
- REVISIONS:
- 1
  - 2
  - 3
  - 4
  - 5
  - 6
  - 7
  - 8
  - 9
  - 10

SUBMITTAL:  
30% SD

SCALE:  
1" = 50'-0" (1:50)

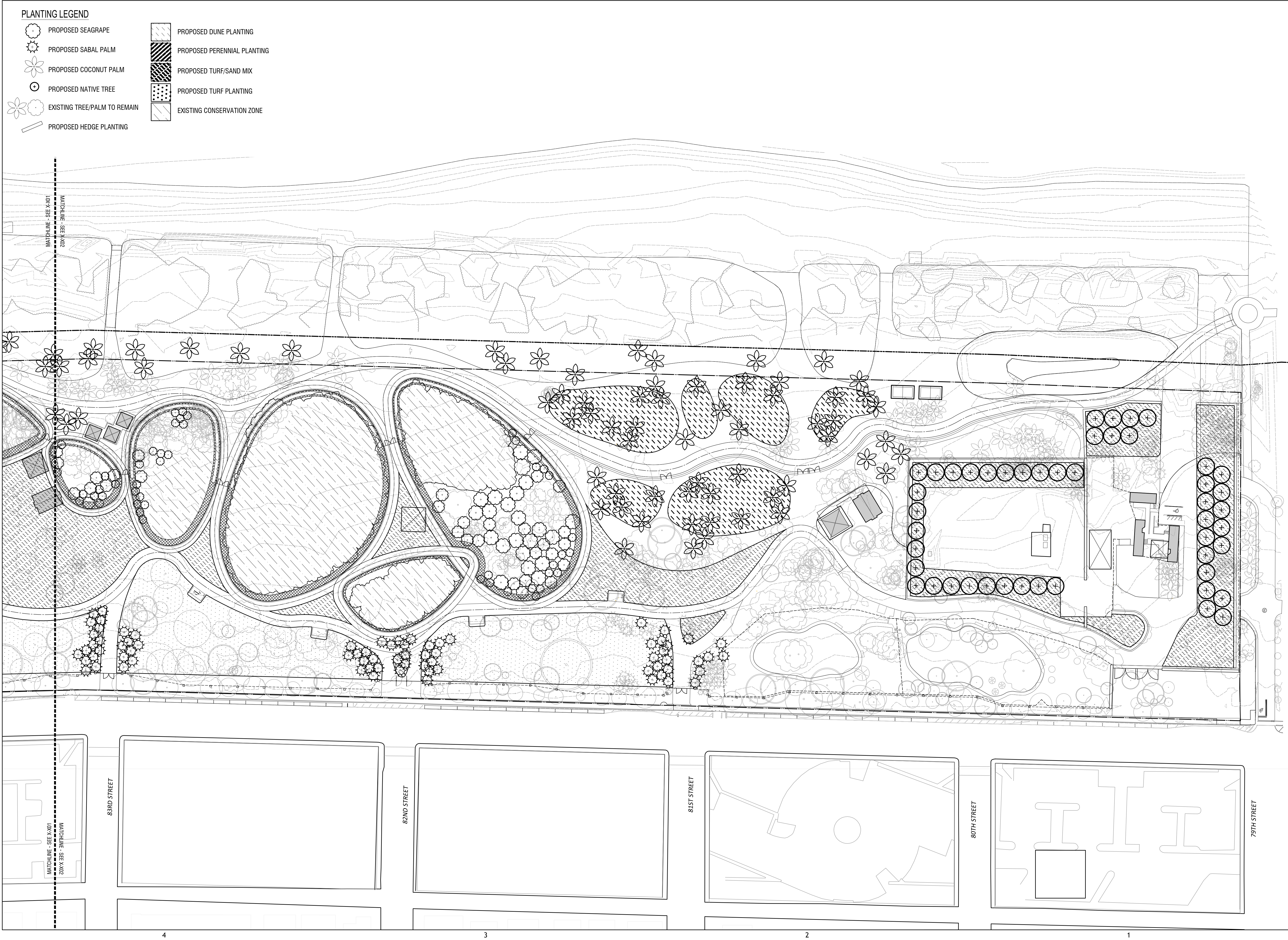
DATE:  
NOV 14, 2016

CGA PROJECT NUMBER:

SHEET TITLE:  
PLANTING PLAN - TILE 1

SHEET NUMBER:

**L401**



CLIENT:

**MIAMI BEACH**

CITY OF MIAMI BEACH  
1700 CONVENTION CENTER DRIVE  
MIAMI BEACH, FL 33139

PRIME CONSULTANT:

**Calvin, Giordano & Associates, Inc.**  
1800 Eller Drive, Suite 600, Fort Lauderdale, Florida 33316  
Phone: (954) 521-7791 • Fax: (954) 521-9807  
CERTIFICATES OF AUTHORIZATION:  
LANDSCAPE ARCHITECTURE: LC00000339  
ENGINEERING: 514  
SURVEYING: 6791

SERVICES PROVIDED:  
LANDSCAPE ARCHITECTURE  
CIVIL ENGINEERING  
COASTAL ENGINEERING  
ELECTRICAL ENGINEERING  
SURVEYING & MAPPING  
COST ESTIMATING

CONCEPTUAL DESIGNER:

**WEST 8**  
333 HUDSON STREET  
SUITE 905  
NEW YORK CITY, NY 10013

ARCHITECTURAL CONSULTANT:  
SYNALOVSKI ROMANIK SAYE, LLC  
1800 ELLER DRIVE  
SUITE 500  
FORT LAUDERDALE, FL 33316  
FIRM LICENSE: AA26001863

GEOTECHNICAL CONSULTANT:  
NUTTING ENGINEERS OF FLORIDA, INC.  
2051 NW 112TH AVENUE  
SUITE 120  
MIAMI, FL 33176  
CERTIFICATE OF AUTHORIZATION: XXXX

**NORTH SHORE OPEN SPACE PARK**

BETWEEN 79TH AND 87TH STREETS,  
EAST OF COLLINS AVENUE

SEAL:

REVISIONS:

1	
2	
3	
4	
5	
6	
7	
8	
9	
10	

SUBMITTAL:  
30% SD

SCALE:  
1" = 50'-0" (1:50)

DATE:  
NOV 14, 2016

CGA PROJECT NUMBER:

SHEET TITLE:  
PLANTING PLAN - TILE 2

SHEET NUMBER:  
L402