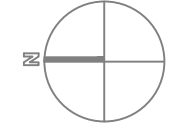
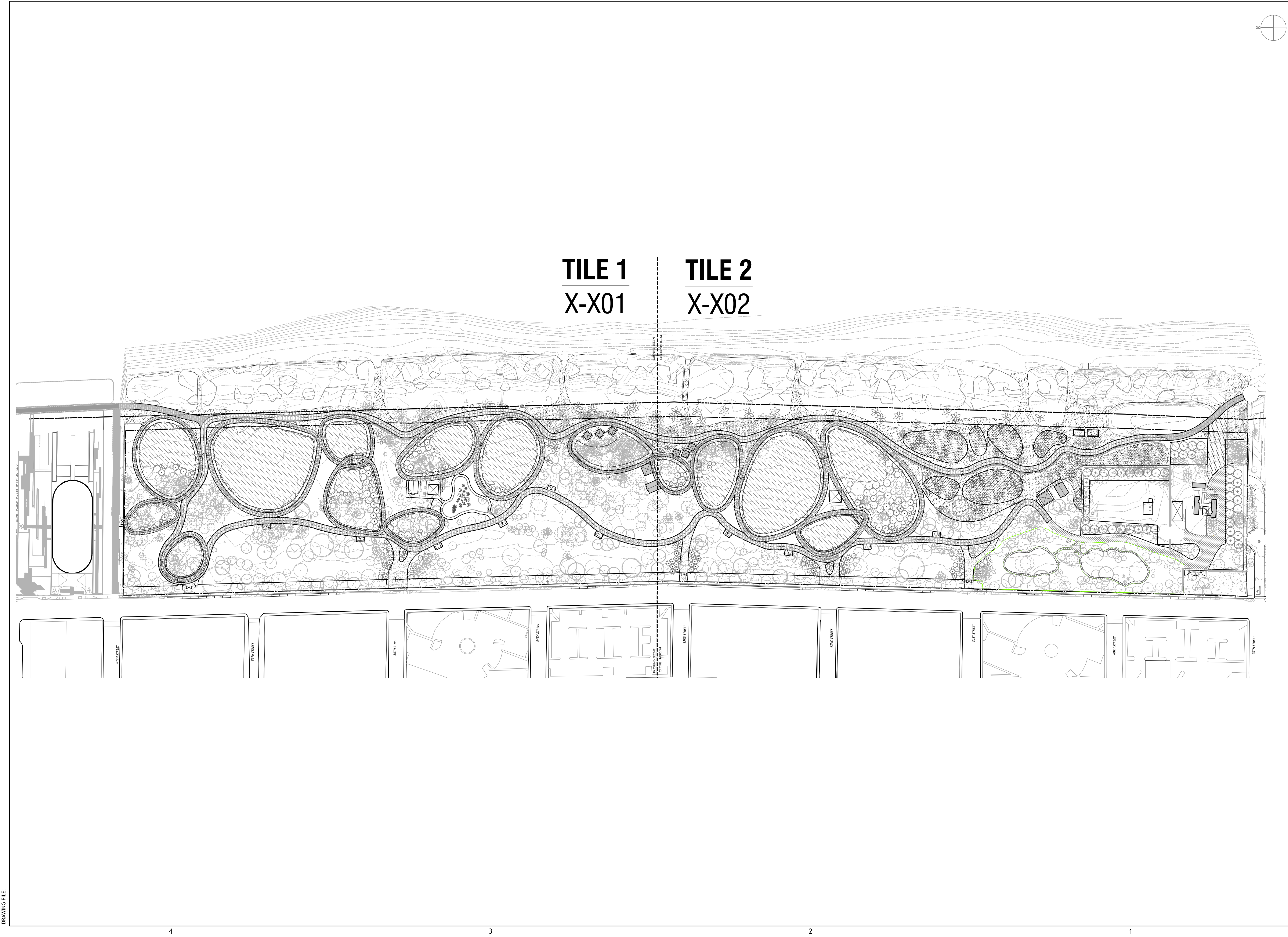


DRAWING FILE:



CLIENT:
MIAMI BEACH
CITY OF MIAMI BEACH
1700 CONVENTION CENTER DRIVE
MIAMI BEACH, FL 33139



Calvin, Giordano &
Associates, Inc.
1800 Eller Drive, Suite 600 Fort Lauderdale,
Florida 33316
Phone: (954) 521-7791 • Fax: (954) 521-9807
CERTIFICATES OF AUTHORIZATION:
LANDSCAPE ARCHITECTURE: LC00000339
ENGINEERING: 514
SURVEYING: 6791

SERVICES PROVIDED:
LANDSCAPE ARCHITECTURE
CIVIL ENGINEERING
COASTAL ENGINEERING
ELECTRICAL ENGINEERING
SURVEYING & MAPPING
COST ESTIMATING

CONCEPTUAL DESIGNER:
WEST 8
333 HUDSON STREET
SUITE 905
NEW YORK CITY, NY 10013

ARCHITECTURAL CONSULTANT:
SYNALOVSKI ROMANIK SAYE, LLC
1800 ELLER DRIVE
SUITE 500
FORT LAUDERDALE, FL 33316
FIRM LICENSE: AA26001863
GEOTECHNICAL CONSULTANT:
NUTTING ENGINEERS OF FLORIDA, INC.
2051 NW 112TH AVENUE
SUITE 120
MIAMI, FL 33176
CERTIFICATE OF AUTHORIZATION: XXXX

**NORTH
SHORE
OPEN
SPACE
PARK**
BETWEEN 79TH AND 87TH STREETS,
EAST OF COLLINS AVENUE

SEAL:

- REVISIONS:
- 1
 - 2
 - 3
 - 4
 - 5
 - 6
 - 7
 - 8
 - 9
 - 10

SUBMITTAL:
30% SD

SCALE:
1" = 100'-0" (1:100)

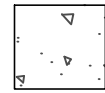
DATE:
NOV 14, 2016


CGA PROJECT NUMBER:

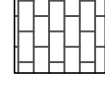
SHEET TITLE:
MATERIALS KEY PLAN

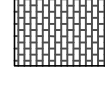
SHEET NUMBER:
L100


MATERIALS LEGEND


- 

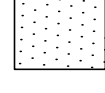
ACCESS AREAS; GRAY VEHICULAR CONCRETE PAVING WITH LIGHT BROOM FINISH ON LIMEROCK BASE
- 


LOOP PAVING AT ATLANTIC WAY; GRAY UNIT PAVERS (VEHICULAR) ON LIMEROCK BASE WITH WHITE CONCRETE BAND EDGE
- 

LOOP - BEACHWALK, GRAY UNIT PAVERS ON LIMEROCK BASE AND CEMENT-STABILIZED SUBGRADE WITH WHITE CONCRETE BAND EDGE
- 

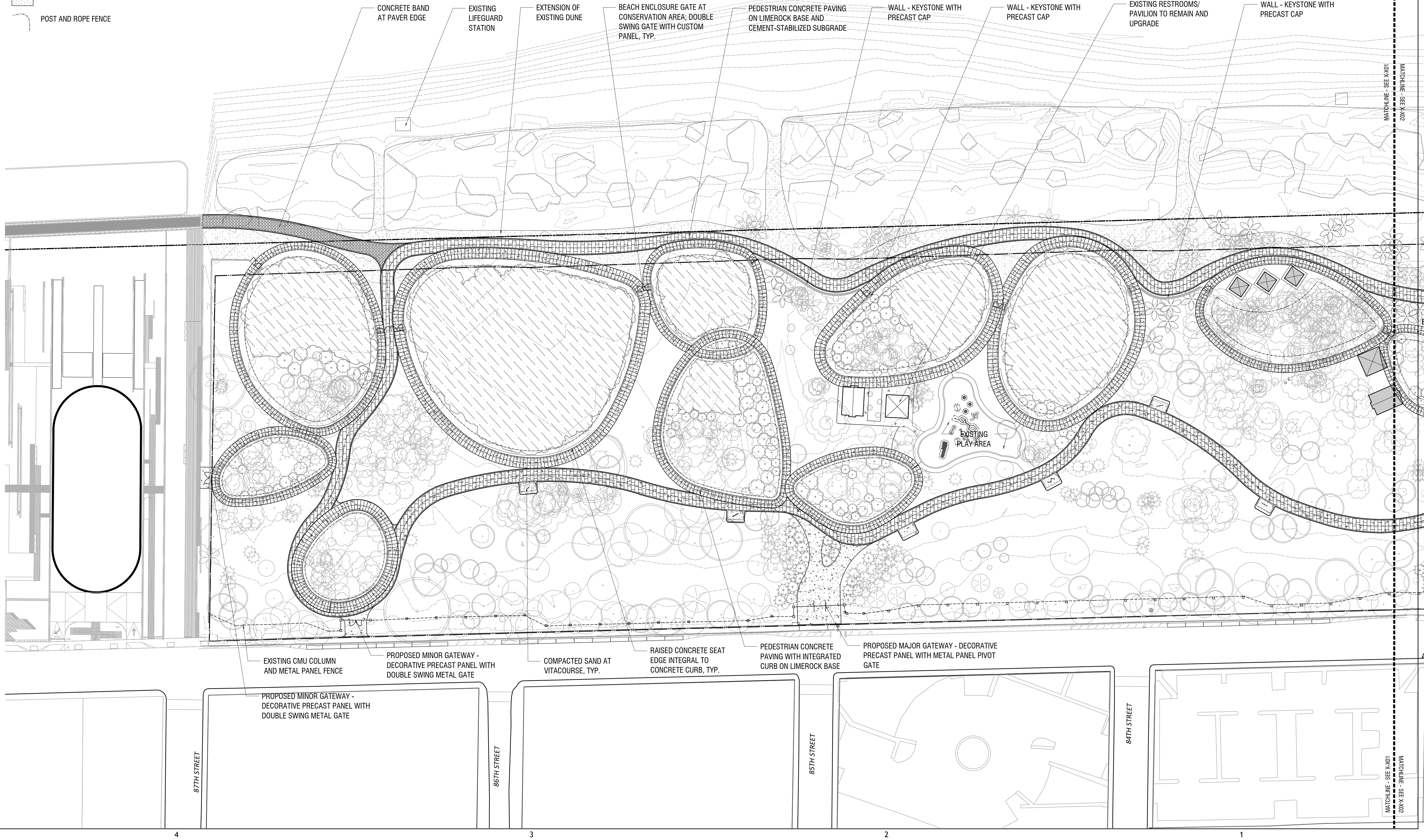
BEACHWALK EXTENSION; CITY STANDARD UNIT PAVERS
- 

CONSERVATION RINGS - WHITE PEDESTRIAN CONCRETE PAVING WITH INTEGRAL SHELL FINISH AND INTEGRATED CURB ON LIMEROCK BASE
- 

BEACH COMPATIBLE SAND FILL
- 

COMPACTED SAND PATH
- 

POST AND ROPE FENCE



CLIENT:

MIAMI BEACH

CITY OF MIAMI BEACH
1700 CONVENTION CENTER DRIVE
MIAMI BEACH, FL 33139

PRIME CONSULTANT:



Calvin, Giordano &
Associates, Inc.

1800 Eller Drive, Suite 600, Fort Lauderdale,
Florida 33316
Phone: (954) 321-7791 • Fax: (954) 321-9807

CERTIFICATES OF AUTHORIZATION:
LANDSCAPE ARCHITECTURE: LC00000339
ENGINEERING: 514
SURVEYING: 6791

SERVICES PROVIDED:
LANDSCAPE ARCHITECTURE
CIVIL ENGINEERING
COASTAL ENGINEERING
ELECTRICAL ENGINEERING
SURVEYING & MAPPING
COST ESTIMATING

CONCEPTUAL DESIGNER:
WEST 8

333 HUDSON STREET
SUITE 905
NEW YORK CITY, NY 10013

ARCHITECTURAL CONSULTANT:
SYNALOVSKI ROMANIK SAYE, LLC

1800 ELLER DRIVE
SUITE 500
FORT LAUDERDALE, FL 33316
FIRM LICENSE: AA26001863

GEOTECHNICAL CONSULTANT:
NUTTING ENGINEERS OF FLORIDA, INC.

2051 NW 112TH AVENUE
SUITE 120
MIAMI, FL 33176
CERTIFICATE OF AUTHORIZATION: XXXX

NORTH SHORE OPEN SPACE PARK

BETWEEN 79TH AND 87TH STREETS,
EAST OF COLLINS AVENUE

SEAL:

REVISIONS:

1	
2	
3	
4	
5	
6	
7	
8	
9	
10	

SUBMITTAL:
30% SD

SCALE:
1" = 50'-0" (1:50)

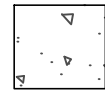

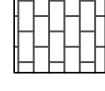
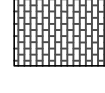



DATE:
NOV 14, 2016

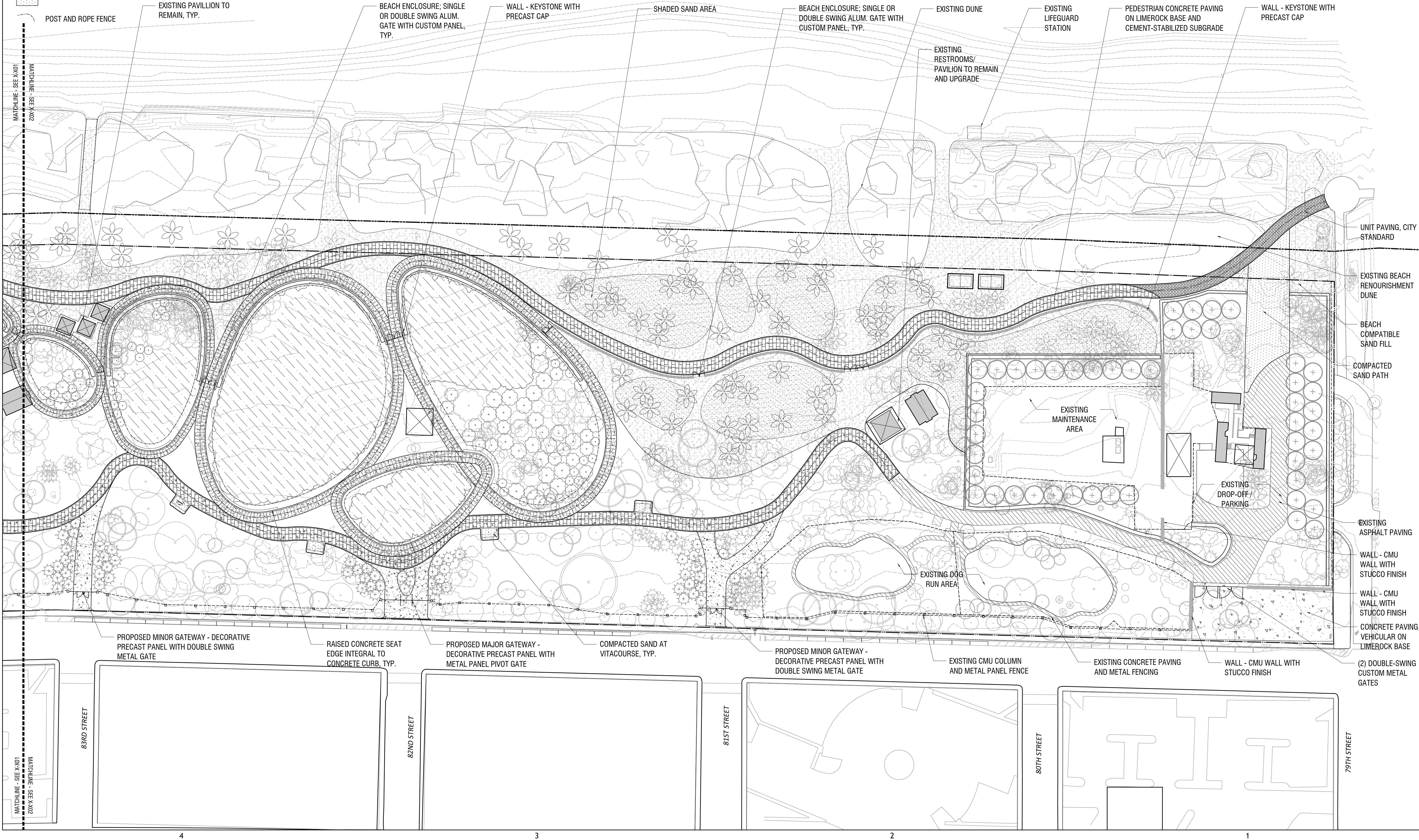
CGA PROJECT NUMBER:

SHEET TITLE:
MATERIALS PLAN - TILE 1

SHEET NUMBER:
L101

MATERIALS LEGEND

-  ACCESS AREAS; GRAY VEHICULAR CONCRETE PAVING WITH LIGHT BROOM FINISH ON LIMEROCK BASE
-  LOOP PAVING AT ATLANTIC WAY; GRAY UNIT PAVERS (VEHICULAR) ON LIMEROCK BASE WITH WHITE CONCRETE BAND EDGE
-  LOOP - BEACHWALK, GRAY UNIT PAVERS ON LIMEROCK BASE AND CEMENT-STABILIZED SUBGRADE WITH WHITE CONCRETE BAND EDGE
-  BEACHWALK EXTENSION; CITY STANDARD UNIT PAVERS
-  CONSERVATION RINGS - WHITE PEDESTRIAN CONCRETE PAVING WITH INTEGRAL SHELL FINISH AND INTEGRATED CURB ON LIMEROCK BASE
-  BEACH COMPATIBLE SAND FILL
-  COMPACTED SAND PATH



CLIENT:
MIAMI BEACH
CITY OF MIAMI BEACH
1700 CONVENTION CENTER DRIVE
MIAMI BEACH, FL 33139



Calvin, Giordano &
Associates, Inc.
1800 Eller Drive, Suite 600, Fort Lauderdale,
Florida 33316
Phone: (954) 321-7791 • Fax: (954) 321-9807
CERTIFICATES OF AUTHORIZATION:
LANDSCAPE ARCHITECTURE: LC00000339
ENGINEERING: 514
SURVEYING: 6791

SERVICES PROVIDED:
LANDSCAPE ARCHITECTURE
CIVIL ENGINEERING
COASTAL ENGINEERING
ELECTRICAL ENGINEERING
SURVEYING & MAPPING
COST ESTIMATING

CONCEPTUAL DESIGNER:
WEST 8
333 HUDSON STREET
SUITE 905
NEW YORK CITY, NY 10013

ARCHITECTURAL CONSULTANT:
SYNALOVSKI ROMANIK SAYE, LLC
1800 ELLER DRIVE
SUITE 500
FORT LAUDERDALE, FL 33316
FIRM LICENSE: AA26001863

GEOTECHNICAL CONSULTANT:
NUTTING ENGINEERS OF FLORIDA, INC.
2051 NW 112TH AVENUE
SUITE 126
MIAMI, FL 33176
CERTIFICATE OF AUTHORIZATION: XXXX

NORTH SHORE OPEN SPACE PARK

BETWEEN 79TH AND 87TH STREETS,
EAST OF COLLINS AVENUE

SEAL:

- REVISIONS:
- 1
 - 2
 - 3
 - 4
 - 5
 - 6
 - 7
 - 8
 - 9
 - 10

SUBMITTAL:
30% SD

SCALE:
1" = 50'-0" (1:50)

DATE:
NOV 14, 2016

CGA PROJECT NUMBER:

SHEET TITLE:
MATERIALS PLAN - TILE 2

SHEET NUMBER:

L102