

NORTH SHORE OPEN SPACE PARK

The City of Miami Beach

Miami Beach, FL

30% SCHEMATIC DESIGN DOCUMENTS

DRAWING LIST:
G000 COVER PAGE

BOUNDARY AND TOPOGRAPHIC SURVEY, SHEET 1
BOUNDARY AND TOPOGRAPHIC SURVEY, SHEET 2
BOUNDARY AND TOPOGRAPHIC SURVEY, SHEET 3
BOUNDARY AND TOPOGRAPHIC SURVEY, SHEET 4
BOUNDARY AND TOPOGRAPHIC SURVEY, SHEET 5
BOUNDARY AND TOPOGRAPHIC SURVEY, SHEET 6

G001 EXISTING SITE PHOTOS
G100 SURVEY KEY PLAN
G101 SURVEY - TILE 1
G102 SURVEY - TILE 2

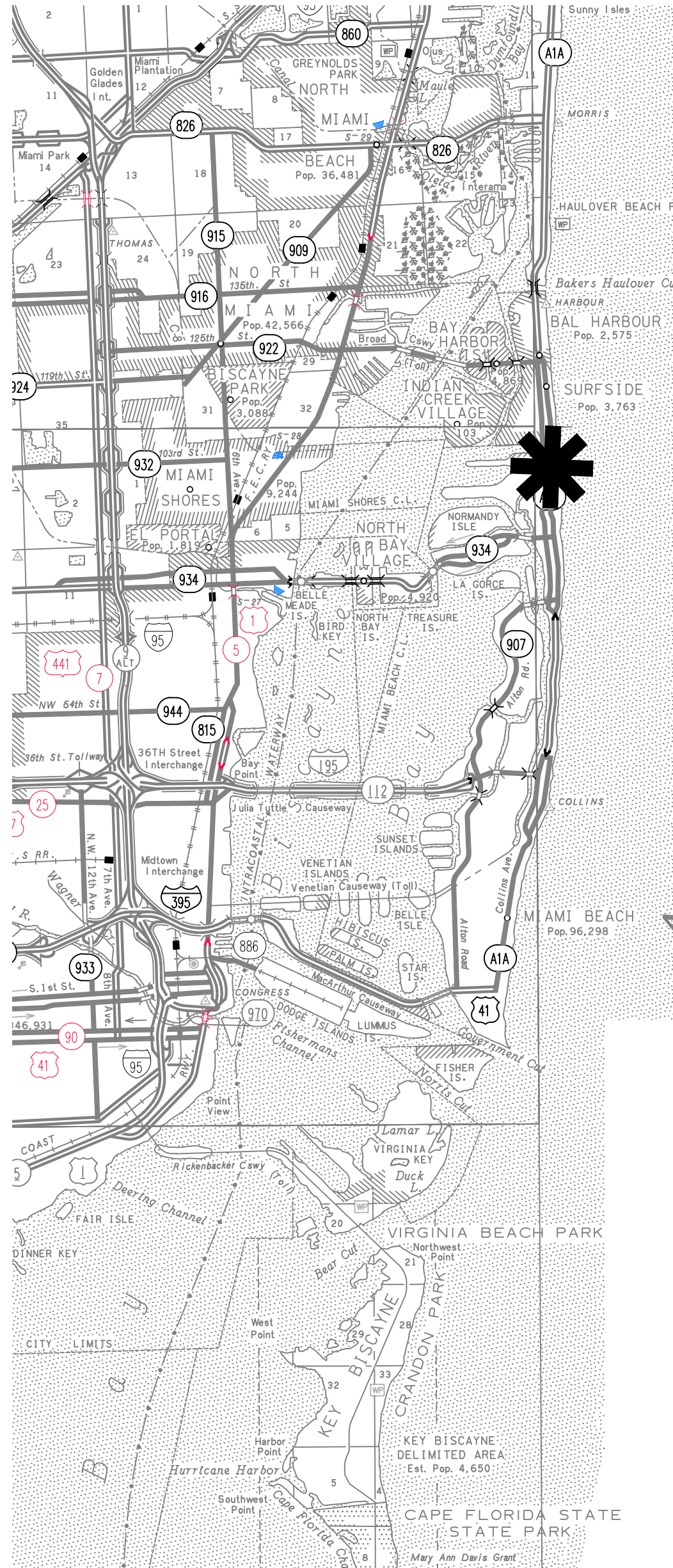
D100 DEMOLITION KEY PLAN
D101 DEMOLITION PLAN - TILE 1
D102 DEMOLITION PLAN - TILE 2
D200 TREE DISPOSITION KEY PLAN
D201 TREE DISPOSITION PLAN - TILE 1
D202 TREE DISPOSITION PLAN - TILE 2

L000 ILLUSTRATIVE SITE PLAN - PHASE 1
L001 ILLUSTRATIVE DIAGRAMS - PHASE 1
L001 ILLUSTRATIVE DIAGRAMS - PHASE 1

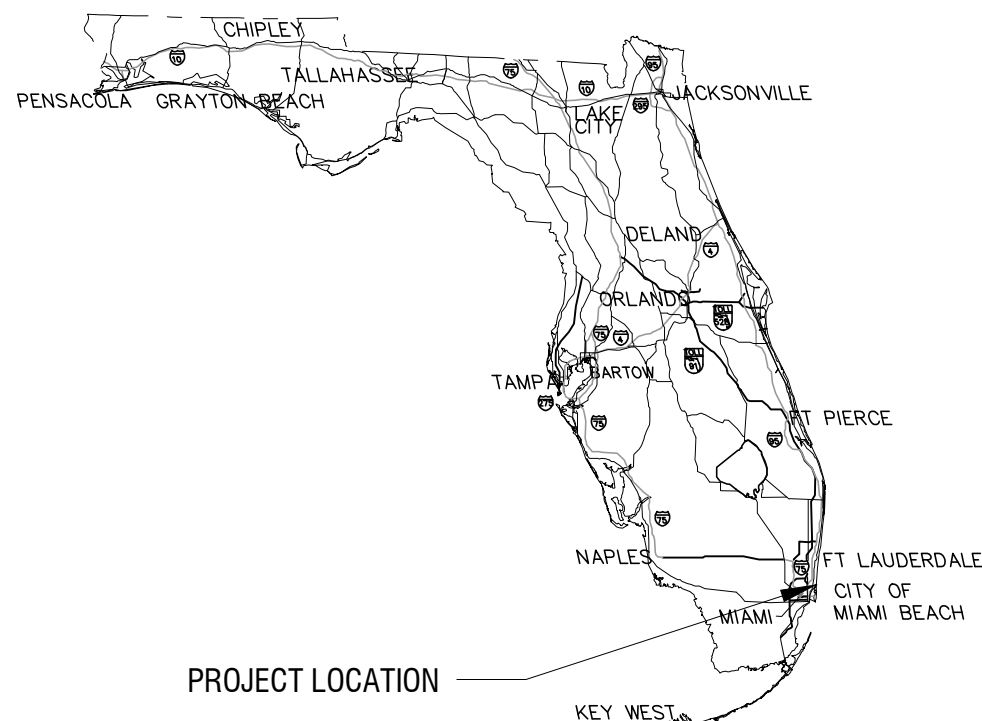
L100 MATERIALS KEY PLAN
L101 MATERIALS PLAN - TILE 1
L102 MATERIALS PLAN - TILE 2
L400 PLANTING KEY PLAN
L401 PLANTING PLAN - TILE 1
L402 PLANTING PLAN - TILE 2
L700 FURNISHINGS KEY PLAN
L701 FURNISHINGS PLAN - TILE 1
L702 FURNISHINGS PLAN - TILE 2

L800 ILLUSTRATIVE TRANSECTS
L801 ILLUSTRATIVE TRANSECTS
L802 ILLUSTRATIVE TRANSECTS

L901 DETAILS - PATHWAYS
L902 DETAILS - PATHWAYS
L903 DETAILS - PATHWAYS
L904 DETAILS - EDGE CONDITIONS
L905 DETAILS - EDGE CONDITIONS
L906 DETAILS - GATEWAYS
L907 DETAILS - GATEWAYS
L908 DETAILS - FENCING AND WALLS
L909 DETAILS - FURNISHINGS
L910 DETAILS - FURNISHINGS



LOCATIONAL SITE PLAN



CITY OF MIAMI BEACH COMMISSIONERS

MAYOR PHILIP LEVINE
COMMISSIONER JOHN ELIZABETH ALEMAN
COMMISSIONER RICKY ARRIOLA
COMMISSIONER MICHAEL GREICO
COMMISSIONER JOY MALAKOFF
COMMISSIONER KRISTEN ROSEN GONZALEZ
COMMISSIONER MICKEY STEINBERG

CITY CLERK

RAFAEL E. GRANADO

CITY MANAGER

JIMMY L. MORALES

DEPARTMENT DIRECTORS

JOHN REBAR; PARKS & RECREATION DEPARTMENT
DAVID MARTINEZ, P.E.; OFFICE OF CAPITAL IMPROVEMENT PROJECTS
THOMAS MOONEY; PLANNING DEPARTMENT



BIRDS EYE VIEW SOUTHWEST

CLIENT:
MIAMI BEACH
CITY OF MIAMI BEACH
1700 CONVENTION CENTER DRIVE
MIAMI BEACH, FL 33139

PRIME CONSULTANT:

Calvin, Giordano & Associates, Inc.
1600 Eller Drive, Suite 600, Fort Lauderdale, Florida 33316
Phone: 954-321-7791 • Fax: 954-321-9977
CERTIFICATES OF AUTHORIZATION:
LANDSCAPE ARCHITECTURE: LC00000339
ENGINEERING: 514
SURVEYING: 6791

SERVICES PROVIDED:
LANDSCAPE ARCHITECTURE
CIVIL ENGINEERING
COASTAL ENGINEERING
ELECTRICAL ENGINEERING
SURVEYING & MAPPING
COST ESTIMATING

CONCEPTUAL DESIGNER:
WEST 8
333 HUDSON STREET
SUITE 905
NEW YORK CITY, NY 10013

ARCHITECTURAL CONSULTANT:
SYNALOVSKI ROMANIK SAYE, LLC
1800 ELLER DRIVE
SUITE 500
FORT LAUDERDALE, FL 33316
FIRM LICENSE: AA26001863

GEOTECHNICAL CONSULTANT:
NUTTING ENGINEERS OF FLORIDA, INC.
2051 NW 112TH AVENUE
SUITE 120
MIAMI, FL 33176
CERTIFICATE OF AUTHORIZATION: XXXX

NORTH SHORE OPEN SPACE PARK

BETWEEN 79TH AND 87TH STREETS,
EAST OF COLLINS AVENUE

SEAL:

REVISIONS:
1
2
3
4
5
6
7
8
9
10

SUBMITTAL:
30% SD

SCALE:
NTS

DATE:
NOV 14, 2016

CGA PROJECT NUMBER:

SHEET TITLE:
COVER

SHEET NUMBER:

G000

NORTH SHORE OPEN SPACE PARK
BOUNDARY AND TOPOGRAPHIC SURVEY

DESCRIPTION:

All of Blocks 1, 2, 3 and 4 lying West of the Miami-Dade County Erosion Control Line (ECL) as established within this area, Together With all of Blocks 13, 14, 15 and 16, Together With all the rights-of-way lying North of the North right-of-way line of 79th Street, lying South of the North right-of-way line of 83rd Street and lying East of the East right-of-way line of Collins Avenue (S.R. A-1-A), all of the CORRECTED PLAT OF ALTOS DEL MAR NO. 1, according to the plat thereof as recorded in Plat Book 31, Page 40, of the Public Records of Miami-Dade County Florida.

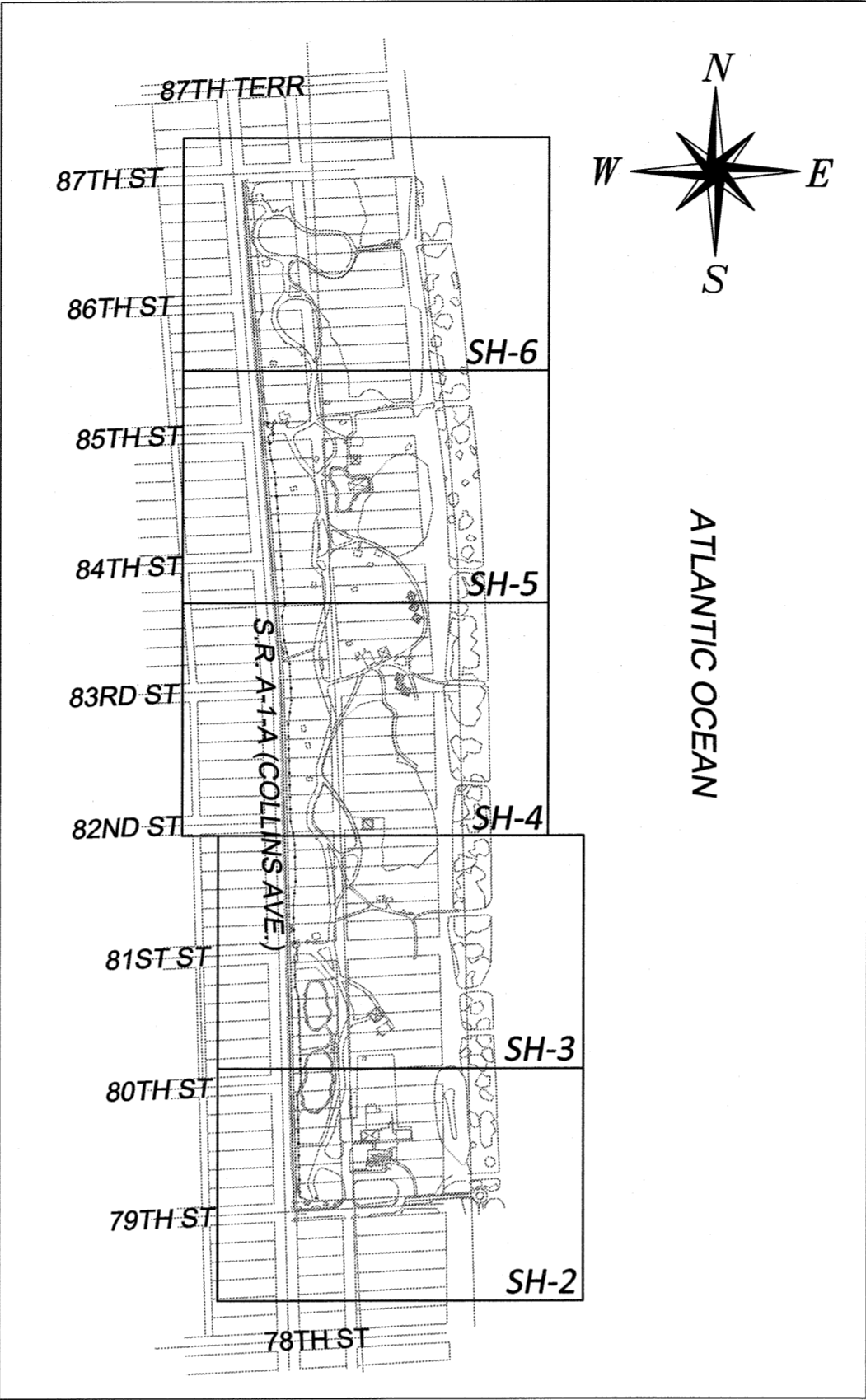
TOGETHER WITH:

All of Blocks 2, 3, 4 and 5 lying West of the Miami-Dade County Erosion Control Line (ECL) as established within this area, Together With all of Blocks 6, 7, 8 and 9, Together With all the rights-of-way lying North of the North right-of-way line of 83rd Street, lying South of the South right-of-way line of 87th Street and lying East of the East right-of-way line of Collins Avenue (S.R. A-1-A), all of ALTOS DEL MAR SUBDIVISION NO. 2, according to the plat thereof as recorded in Plat Book 4, Page 162, of the Public Records of Miami-Dade County Florida.

Said lands situate within the City of Miami Beach, Miami-Dade County, Florida.

BOUNDARY & TOPOGRAPHIC SURVEY NOTES:

- Calvin, Giordano & Associates, did not research title for this property and the plats, rights-of-way, and easements as shown hereon are per the Public Records of Miami-Dade County, Florida via the Miami-Dade County Property Appraiser's and Clerk of the Court's web sites.
- The purpose of this Map Survey is to prepare a Boundary and Topographic Survey of North Shore Open Space Park located in the City of Miami Beach, as described under Miami-Dade County parcel Folio Numbers: 02-3202-006; 0020; 0070; 0080; 0090; 0100; 0110; 0120; 0140; 0150; 0170; 0180; 0190; 0200; 0210; 0220; 0230; 0240; 0250; 0260; 0270; 0290; 0300; 0310; 0320; 0330; 0340; 0350; 0360; 0670; and 02-3202-004: 0010; 0050; 0110; 0150; 0580; 0590; 0600; 0610; 0620; 0630; 0640. All above ground improvements within the site have been located and shown hereon, underground utilities and/or foundations have not been located and CGA did not perform any potholing of underground utilities. .
- Not valid without the signature and original raised seal of a Florida Professional Surveyor & Mapper.
- Underground improvements and/or encroachments were not located as part of this survey task.
- Unless otherwise noted hereon, record and measured values are in substantial agreement.
- This survey is classified as commercial/high risk and exceeds the minimum relative distance accuracy of 1 foot in 10,000 feet as per the Standards of Practice requirements Chapter 5J-17.050 through 5J-17.052 F.A.C., the accuracy obtained by measurement and calculation of a closed geometric figure was found to exceed this requirement.
- The horizontal features shown hereon are plotted to within 1/20 of the map scale.
- Horizontal and vertical data shown hereon was obtained utilizing a "TOPCON ES-105" Total Station and "TDS-NOMAD" Data Collection System.
- Horizontal feature location is to the center of the symbol and may be enlarged for clarity.
- Bearings shown hereon are assumed and referenced to the Florida Department of Transportation Right-of-Way Map Section B6060, FIN. PROJ. ID. 2507471; State Road No. A-1-A (Collins Avenue) having a bearing of N 87° 05'16" E along the centerline of 79th Street.
- The elevations shown hereon are based on North American Vertical Datum of 1988 (NAVD88) and referenced to Miami-Dade County Benchmarks; D-180, Elevation= 1.97' (NAVD88), being a PK Nail & Aluminum Washer in a concrete sidewalk next to a fire hydrant being 30 ft. South of the centerline of 81st Street and 46 ft. East of the centerline of Byron Avenue and G-313, Elevation= 6.72' (NAVD88), being a US Coast and Geodetic brass disc in the Northeast corner of a sewer pump station at the center of a parking lot, 165 ft. West of the West curb of Collins Avenue and North of 72nd Street.
- Flood Zone Information
Map Number: 12086C0326L
Flood Zones: AE (8), VE (10), VE (11), X
Community Number 120651
Panel Number 0326
Suffix L
Dated 09-11-2009
- Elevations Shown hereon are based on the North American Vertical Datum of 1988.
- Miami-Dade County Erosion Control Line information obtained from the recorded maps as linked within the Land Boundary Information System (LABINS) web site as sponsored by the Florida Department of Environmental Protection (FDEP), Division of State Lands, Bureau of Survey and Mapping: Water Boundary/Erosion Control Line Index and Maps.
- The following information as been provided by the Florida Department of Environmental Protection (FDEP), Division of State Lands, Bureau of Survey and Mapping:
Date: 8/10/2016
County: Miami-Dade
Waterbody: Atlantic Ocean
Project Vicinity: North Shore Open Space Park
Sec. Twp. Rge.: 2-53S-42E
Mean High Water: +0.33' (NAVD88)
Mean Low Water: -2.14' (NAVD88)
Seasonal High Water Line: +4.04' (NAVD88)



SYMBOL LEGEND

- SIGN
- WATER VALVE
- GAS VALVE
- IRRIGATION VALVE
- FIRE HYDRANT
- WATER METER
- BACKFLOW PREVENTOR
- ELECTRIC HANDHOLE
- WOOD POST (SQUARE)
- SANITARY MANHOLE
- TRASH CAN
- WOOD POWER POLE
- CATCH BASIN
- DOG POT
- BELLSOUTH HANDHOLE
- BOLLARD
- GAS CONTAINER
- ELECTRIC METER/ RACK
- FPL TRANSFORMER PAD
- GUY ANCHOR
- PARKING METER
- CATCH BASIN
- FLAG POLE
- DRINKING WATER FOUNTAIN
- BAR-B-Q GRILL
- TRAFFIC SIGNAL HANDHOLE
- PEDESTRIAN POLE
- MASTARM (SIGNAL)
- WATER VAULT
- OVERHEAD ELECTRIC
- FOUND PROPERTY CORNER (ID SHOWN ON SURVEY)

LEGEND

- CONC CONCRETE
- CATV CABLE TELEVISION
- D.B. DEED BOOK
- NAVD NORTH AMERICAN VERTICAL DATUM
- FH FIRE HYDRANT
- FP&L FLORIDA POWER & LIGHT
- LB LICENSED BUSINESS
- MON MONUMENT
- O.R.B. OFFICIAL RECORDS BOOK
- M.D.C.R. MIAMI DADE COUNTY RECORDS
- P.B. PLAT BOOK
- PG. PAGE
- RES RESIDENT
- RCP REINFORCE CONCRETE PIPE
- R/W RIGHT-OF-WAY
- S.R. STATE ROAD
- (Typ.) TYPICAL
- (P) PLAT RECORDS
- INV. INVERT
- ASPH. ASPHALT
- E-O-P EDGE OF PAVEMENT

CERTIFICATION:

I, Steven M. Watts, do hereby state that this Map of Boundary and Topographic Survey was done under my direct supervision and is accurate to the best of my knowledge and belief. I further state that this Map of Boundary and Topographic Survey was completed in accordance with the Standards of Practice requirements for Surveying and Mapping as stated in Rule 5J-17 of the Florida Administrative Code, pursuant to Florida Statutes Chapter 472.027.

Last Date of Field Survey: September 22, 2016

CALVIN, GIORDANO & ASSOCIATES, INC.

Signature:
Steven M. Watts
Professional Surveyor and Mapper
Florida Registration No. 4588

FIELD SURVEY DATE JULY-SEPT.: 2016
DRAWN BY PD/SMW
CHECKED BY SMW



Calvin, Giordano & Associates, Inc.
EXCEPTIONAL SOLUTIONS™
1800 Eller Drive, Suite 600, Fort Lauderdale, Florida 33316
Phone: 954.921.7781 • Fax: 954.921.8807

NORTH SHORE OPEN SPACE PARK PROJECT
CITY OF MIAMI BEACH
MIAMI-DADE COUNTY, FLORIDA

BOUNDARY & TOPOGRAPHIC SURVEY
NORTH SHORE OPEN SPACE PARK

NOT VALID WITHOUT THE SIGNATURE AND THE ORIGINAL RAISED SEAL OF A FLORIDA LICENSED SURVEYOR & MAPPER

STEVEN M. WATTS
PSM NO. 4588

SCALE 1" = 30'
PROJECT No 15-7934
FIELD BOOK 812 & 899

SHEET: 1 OF 6



BOUNDARY & TOPOGRAPHIC SURVEY
NORTH SHORE OPEN SPACE PARK

SCALE <i>1" = 30'</i>	SHEET: <i>2 OF 6</i>
PROJECT No <i>15-7934</i>	
CAD FILE	

[illegible]

Calvin, Giordano & Associates, Inc.
EXCEPTIONAL SOLUTIONS
 1800 Eller Drive, Suite 600, Fort Lauderdale, Florida 33316
 Phone: 954.921.7781 • Fax: 954.921.8807

*NORTH SHORE OPEN SPACE PARK PROJECT
CITY OF MIAMI BEACH
MIAMI-DADE COUNTY, FLORIDA*

BOUNDARY & TOPOGRAPHIC SURVEY
NORTH SHORE OPEN SPACE PARK

SCALE <i>1" = 30'</i>	SHEET: <i>4 OF 6</i>
PROJECT No <i>15-7934</i>	
CAD FILE	



(IN FEET)
1 inch = 30 ft.

MATCH LINE - SEE SHEET 4



Calvin, Giordano & Associates, Inc.
EXCEPTIONAL SOLUTIONS
 1800 Eller Drive, Suite 600, Fort Lauderdale, Florida 33316
 Phone: 954.921.7781 • Fax: 954.921.8807

*NORTH SHORE OPEN SPACE PARK PROJECT
CITY OF MIAMI BEACH
MIAMI-DADE COUNTY, FLORIDA*

BOUNDARY & TOPOGRAPHIC SURVEY
NORTH SHORE OPEN SPACE PARK

SCALE	SHEET: <i>5 OF 6</i>
PROJECT No <i>15-7934</i>	
CAD FILE	

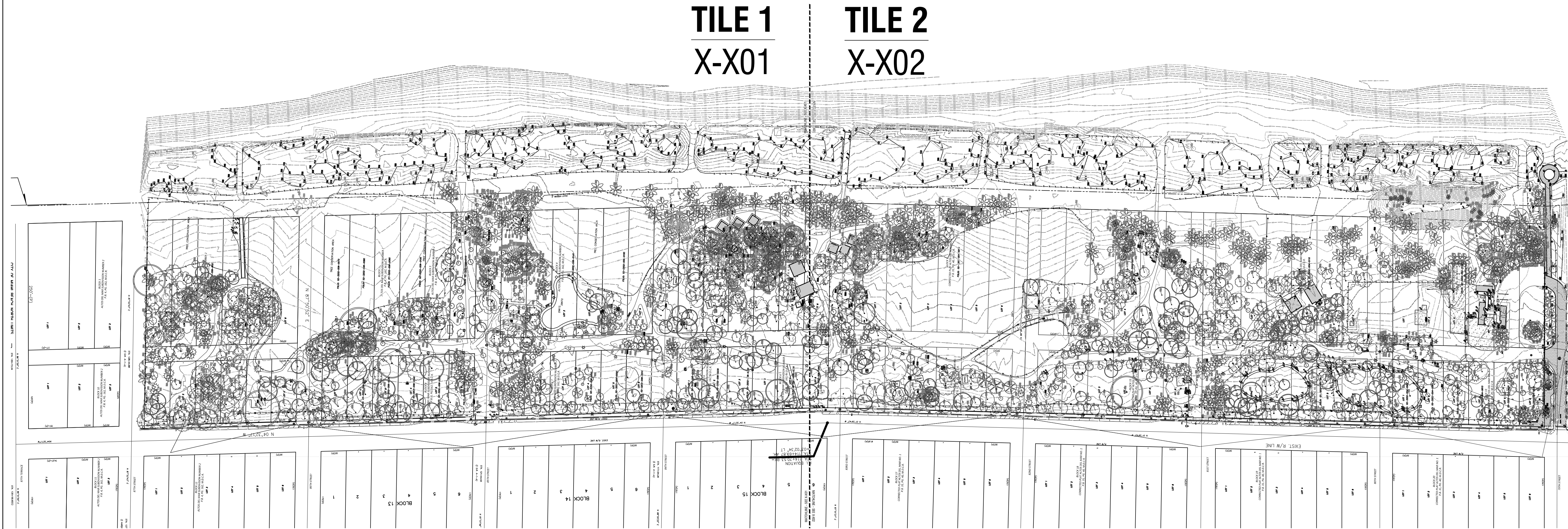
DRAWING FILE:

4

3

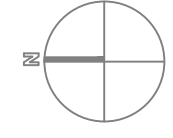
2

1



TILE 1
X-X01

TILE 2
X-X02



CLIENT:

MIAMI BEACH

CITY OF MIAMI BEACH
1700 CONVENTION CENTER DRIVE
MIAMI BEACH, FL 33139

PRIME CONSULTANT:

Calvin, Giordano & Associates, Inc.

8800 Eller Drive, Suite 600, Fort Lauderdale, Florida 33316
Phone: (954) 331-7791 • Fax: (954) 331-9807

CERTIFICATES OF AUTHORIZATION:
LANDSCAPE ARCHITECTURE: LC00000339
ENGINEERING: 514
SURVEYING: 6791

SERVICES PROVIDED:
LANDSCAPE ARCHITECTURE
CIVIL ENGINEERING
COASTAL ENGINEERING
ELECTRICAL ENGINEERING
SURVEYING & MAPPING
COST ESTIMATING

CONCEPTUAL DESIGNER:

WEST 8

333 HUDSON STREET
SUITE 905
NEW YORK CITY, NY 10013

ARCHITECTURAL CONSULTANT:

SYNALOVSKI ROMANIK SAYE, LLC

1800 ELLER DRIVE
SUITE 500
FORT LAUDERDALE, FL 33316
FIRM LICENSE: AA26001863

GEOTECHNICAL CONSULTANT:

NUTTING ENGINEERS OF FLORIDA, INC.

2051 NW 112TH AVENUE
SUITE 120
MIAMI, FL 33176
CERTIFICATE OF AUTHORIZATION: XXXX

NORTH SHORE OPEN SPACE PARK

BETWEEN 79TH AND 87TH STREETS,
EAST OF COLLINS AVENUE

SEAL:

REVISIONS:

1
2
3
4
5
6
7
8
9
10

SUBMITTAL:

30% SD

SCALE:

1" = 100'-0" (1:100)

DATE:

NOV 14, 2016

CGA PROJECT NUMBER:

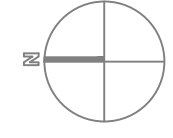
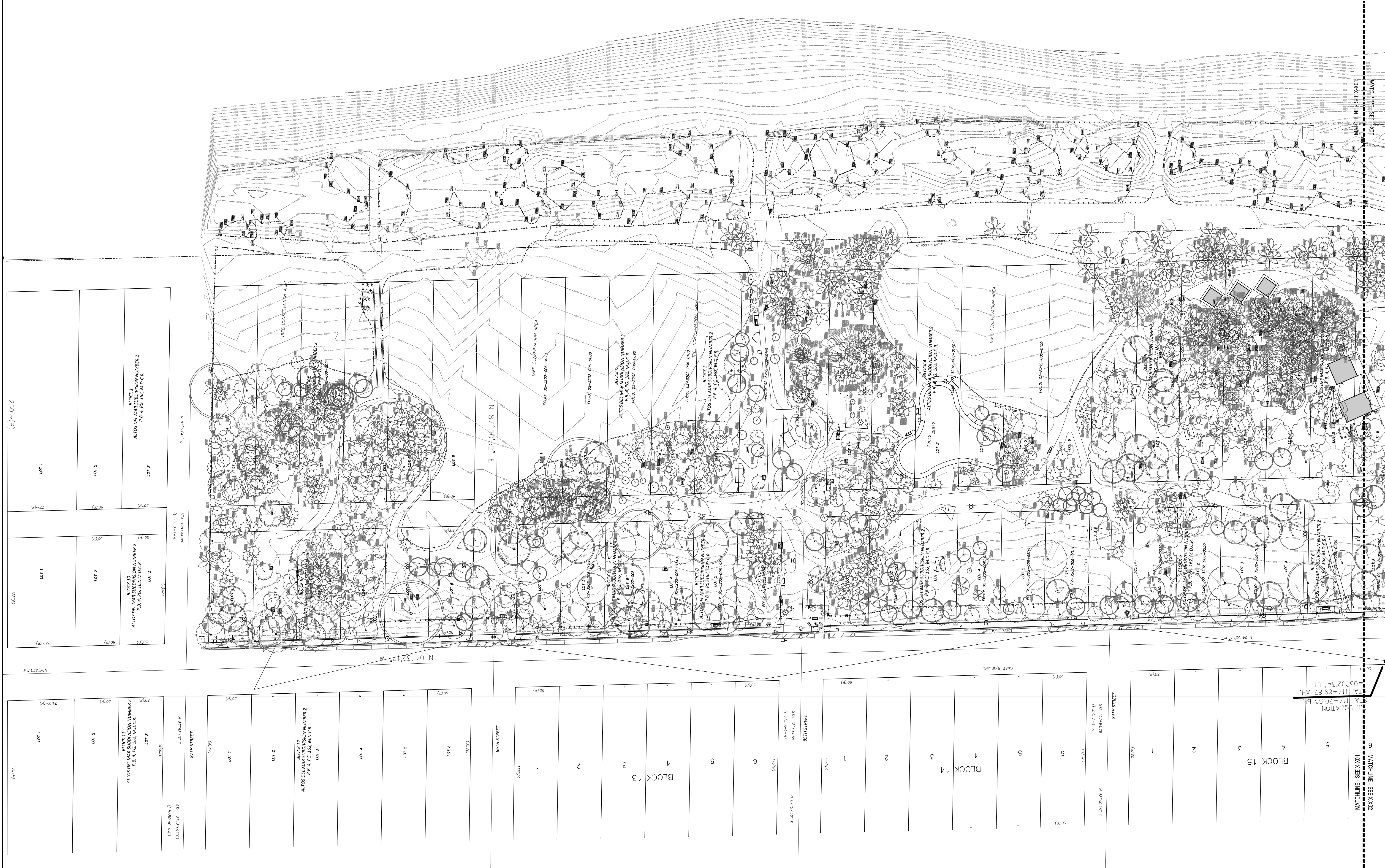
SHEET TITLE:

SURVEY KEY PLAN

SHEET NUMBER:

G100

DRAWING FILE:



CLIENT:

MIAMI BEACH

CITY OF MIAMI BEACH
1700 CONVENTION CENTER DRIVE
MIAMI BEACH, FL 33139

PRIME CONSULTANT:

Calvin, Giordano & Associates, Inc.

1800 Eller Drive, Suite 600 Fort Lauderdale, Florida 33316
Phone: (954) 321-7791 • Fax: (954) 321-9807

CERTIFICATES OF AUTHORIZATION:
LANDSCAPE ARCHITECTURE: LC00000339
ENGINEERING: 514
SURVEYING: 6791

SERVICES PROVIDED:
LANDSCAPE ARCHITECTURE
CIVIL ENGINEERING
COSTAL ENGINEERING
ELECTRICAL ENGINEERING
SURVEYING & MAPPING
COST ESTIMATING

CONCEPTUAL DESIGNER:

WEST 8

333 HUDSON STREET
SUITE 905
NEW YORK CITY, NY 10013

ARCHITECTURAL CONSULTANT:

SYNALOVSKI ROMANIK SAYE, LLC

1800 ELLER DRIVE
SUITE 500
FORT LAUDERDALE, FL 33316
FIRM LICENSE: AA26001863

GEOTECHNICAL CONSULTANT:

NUTTING ENGINEERS OF FLORIDA, INC.

2051 NW 112TH AVENUE
SUITE 120
MIAMI, FL 33176
CERTIFICATE OF AUTHORIZATION: XXXX

NORTH SHORE OPEN SPACE PARK

BETWEEN 79TH AND 87TH STREETS,
EAST OF COLLINS AVENUE

SEAL:

REVISIONS:

1
2
3
4
5
6
7
8
9
10

SUBMITTAL:

30% SD

SCALE:

1" = 50'-0" (1:50)

DATE:

NOV 14, 2016

CGA PROJECT NUMBER:

SHEET TITLE:

SURVEY - TILE 1

SHEET NUMBER:

G101



LANDSCAPE ARCHITECTURE
CIVIL ENGINEERING
COASTAL ENGINEERING
ELECTRICAL ENGINEERING
SURVEYING & MAPPING
COST ESTIMATING

ARCHITECTURAL CONSULTANT:
RYNALOVSKI ROMANIK SAYE, LLC
1800 ELLER DRIVE
SUITE 500
FORT LAUDERDALE, FL 33316
FIRM LICENSE: AA26001863

GEOTECHNICAL CONSULTANT:
PUTTING ENGINEERS OF FLORIDA, INC.
2051 NW 112TH AVENUE
SUITE 126
MIAMI, FL 33176
CERTIFICATE OF AUTHORIZATION: XXXX

NORTH
SHORE
OPEN
SPACE
PARK

BETWEEN 79TH AND 87TH STREETS,
EAST OF COLLINS AVENUE

REAL:

REVISIONS:

0

SUBMITTAL

30% S

SALE:

1" = 50'-0" (1:50)

ATE:

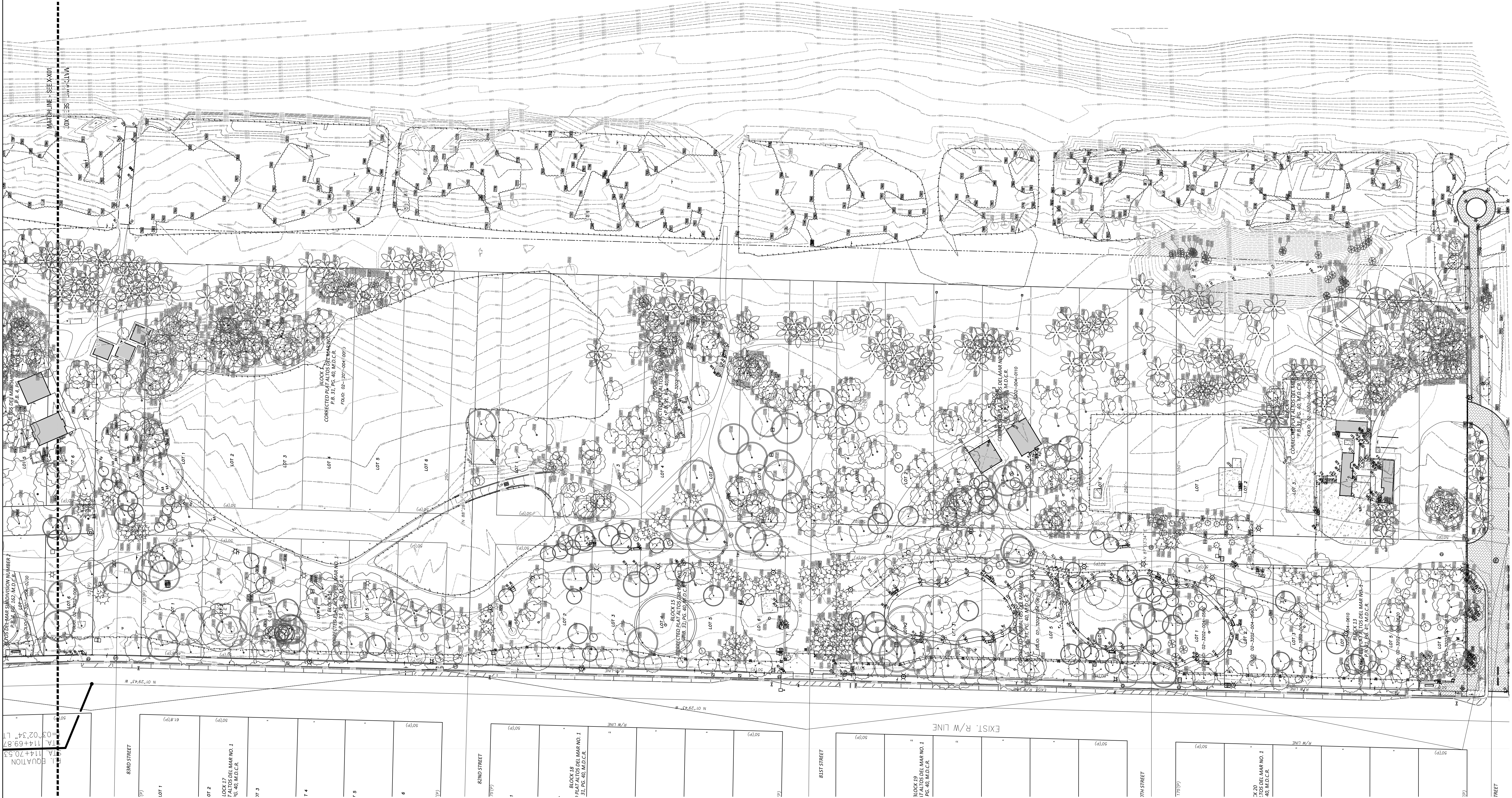
NOV 14, 2016

GA PROJECT NUMBER

SHEET TITLE:
SURVEY - TILE 2

SHEET NUMBER:

G102



DRAWING FILE:



1 SAND DUNES
- NTS



2 SEAGRAPE PLANTING
- NTS



3 LAWN AREA
- NTS



4 CONSERVATION AREA/SECURITY
- NTS



5 PATHWAY SYSTEM
- NTS



6 BEACHWALK
- NTS



7 PARK PROGRAM
- NTS



8 ENCLOSURES
- NTS



9 VIEWLINES
- NTS



10 MAINTENANCE AREA
- NTS

CLIENT:

CITY OF MIAMI BEACH
1700 CONVENTION CENTER DRIVE
MIAMI BEACH, FL 33139

PRIME CONSULTANT:


Calvin, Giordano & Associates, Inc.
1800 Eller Drive, Suite 600 Fort Lauderdale, Florida 33316
Phone: 954-591-3791 • Fax: 954-521-9807
CERTIFICATES OF AUTHORIZATION:
LANDSCAPE ARCHITECTURE: LC00000339
ENGINEERING: 514
SURVEYING: 6791

SERVICES PROVIDED:

LANDSCAPE ARCHITECTURE
CIVIL ENGINEERING
COASTAL ENGINEERING
ELECTRICAL ENGINEERING
SURVEYING & MAPPING
COST ESTIMATING

CONCEPTUAL DESIGNER:

WEST 8
333 HUDSON STREET
SUITE 905
NEW YORK CITY, NY 10013

ARCHITECTURAL CONSULTANT:

SYNALOVSKI ROMANIK SAYE, LLC
1800 ELLER DRIVE
SUITE 500
FORT LAUDERDALE, FL 33316
FIRM LICENSE: AA26001863

GEOTECHNICAL CONSULTANT:

NUTTING ENGINEERS OF FLORIDA, INC.
2051 NW 112TH AVENUE
SUITE 120
MIAMI, FL 33176
CERTIFICATE OF AUTHORIZATION: XXXX

NORTH SHORE OPEN SPACE PARK

BETWEEN 79TH AND 87TH STREETS,
EAST OF COLLINS AVENUE

SEAL:

REVISIONS:

1
2
3
4
5
6
7
8
9
10

SUBMITTAL:

30% SD

SCALE:

NTS

DATE:

NOV 14, 2016

CGA PROJECT NUMBER:

SHEET TITLE:

EXISTING SITE PHOTOS

SHEET NUMBER:

G001