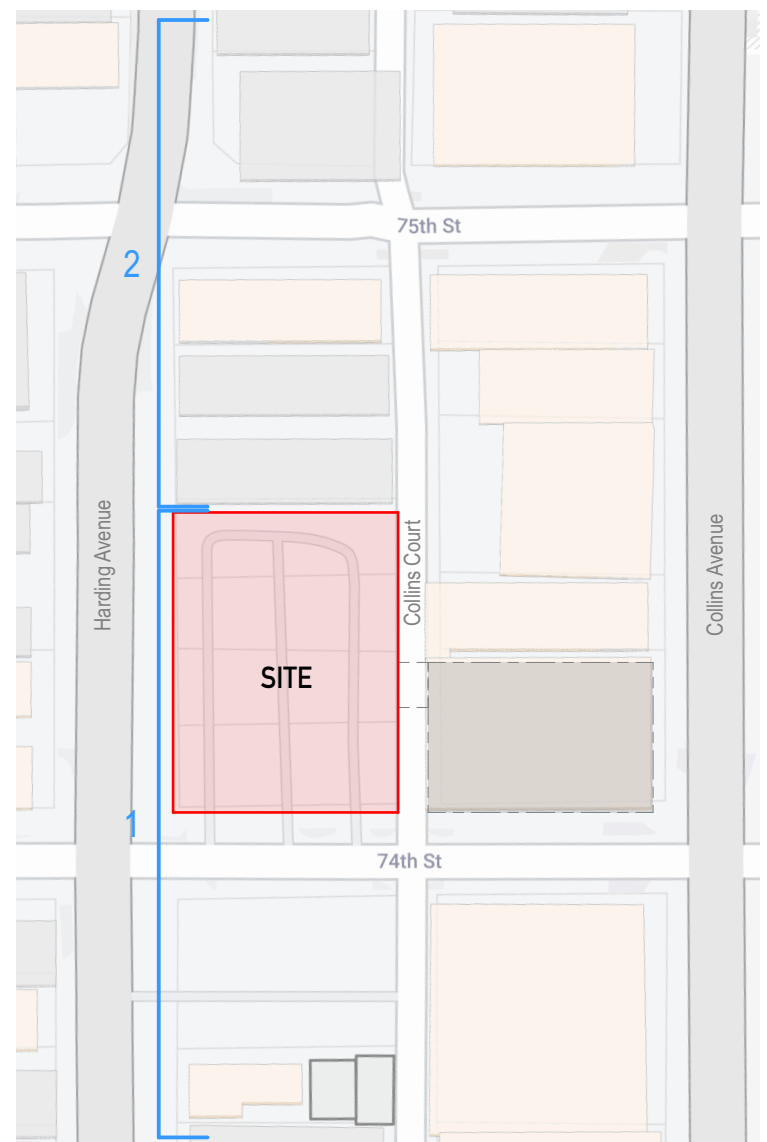




1/32" = 1'-0" CONTEXT ELEVATION-HARDING AVE 1

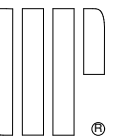
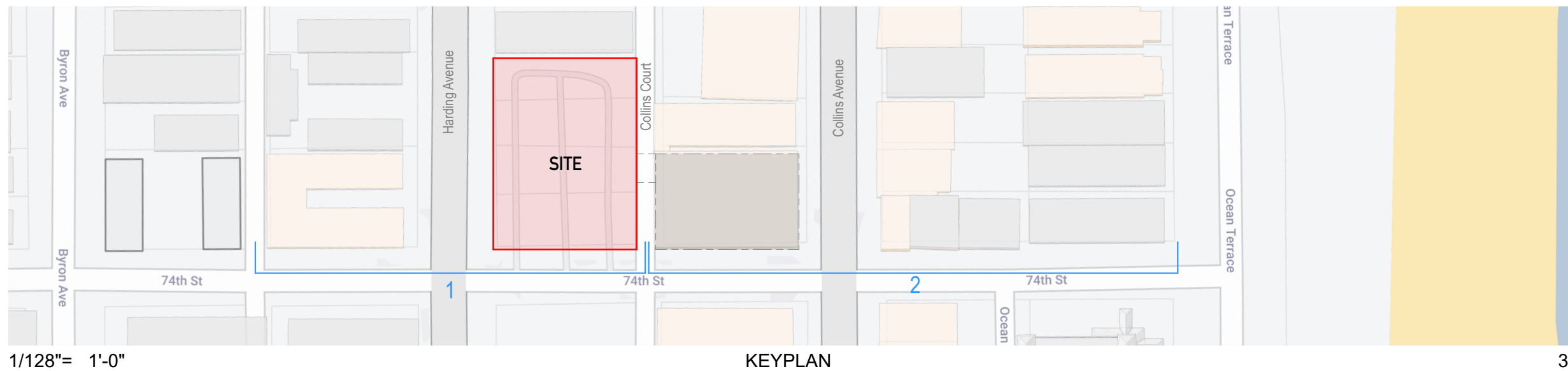
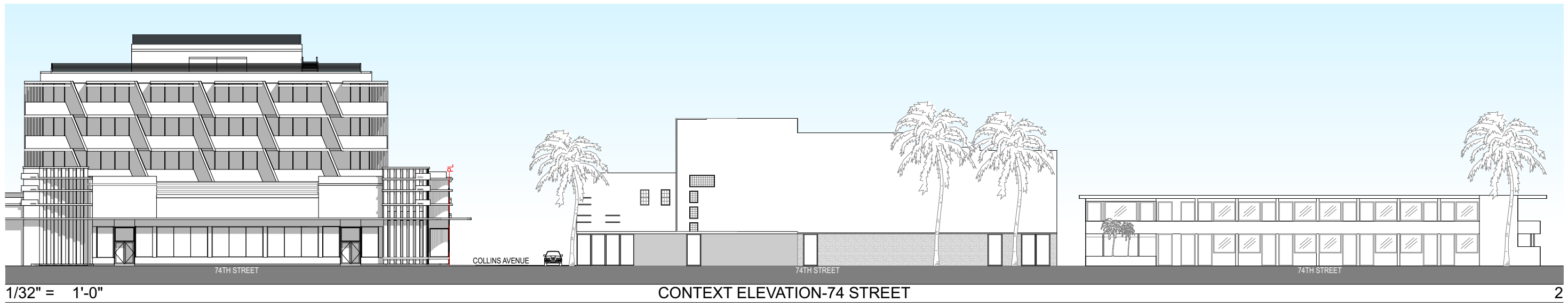
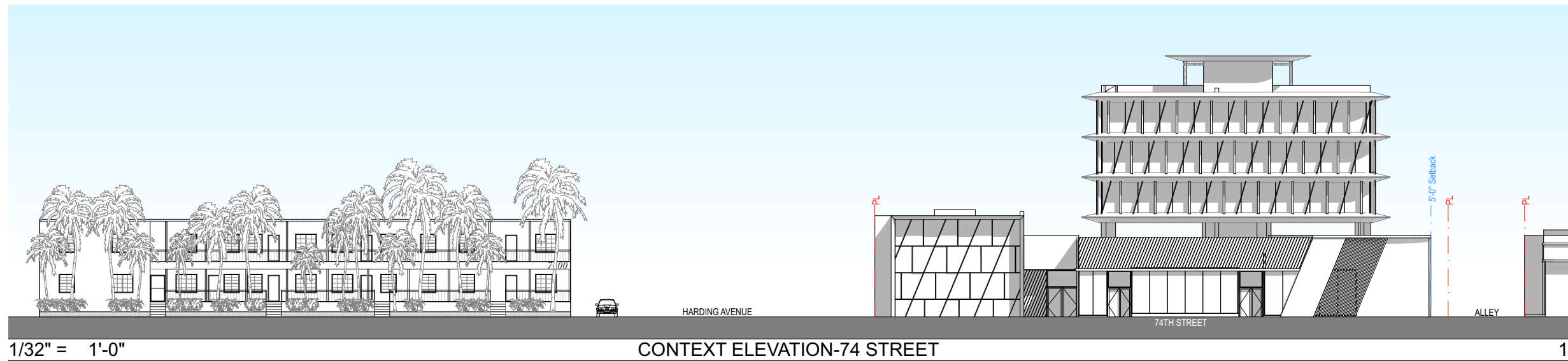


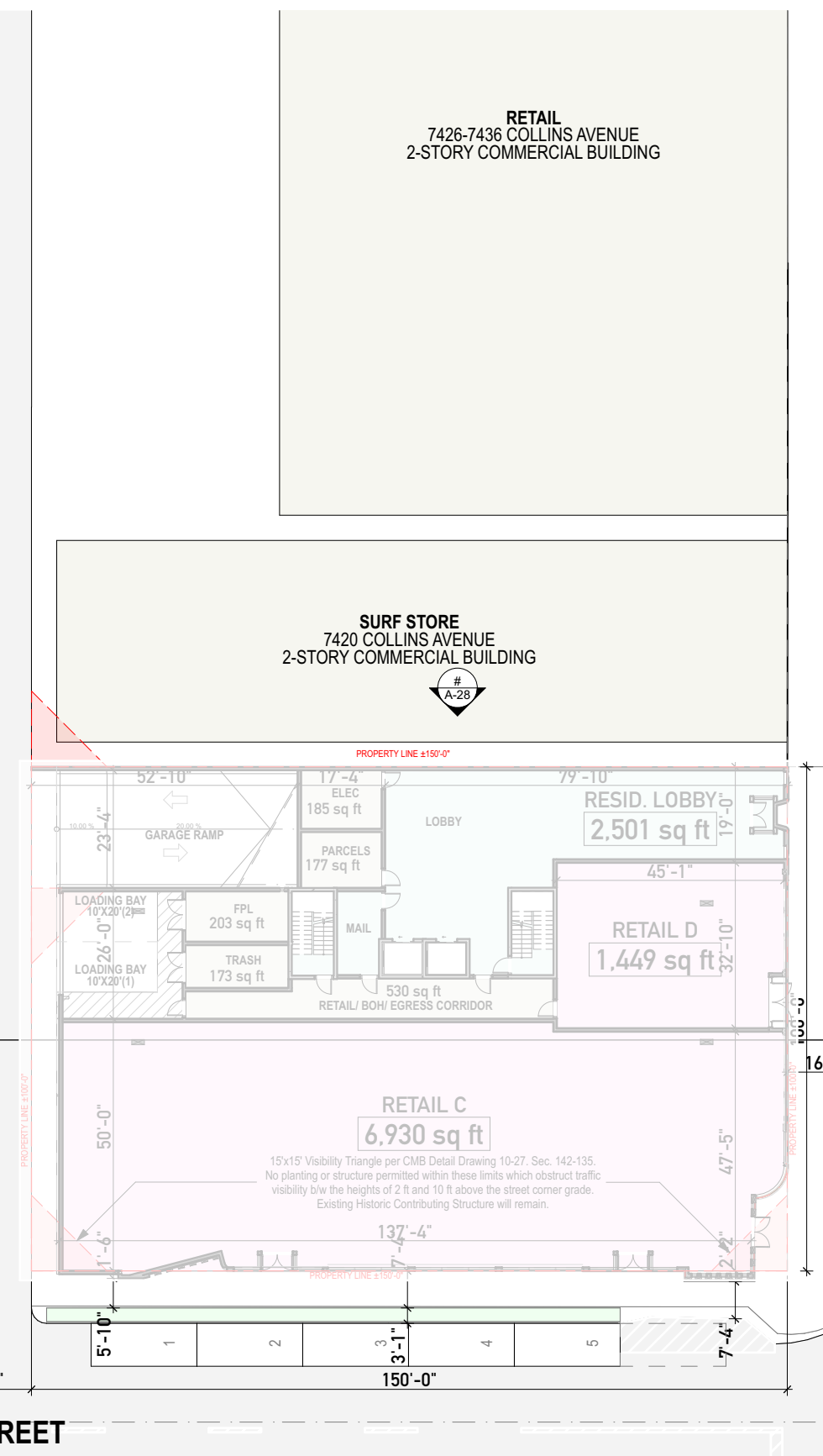
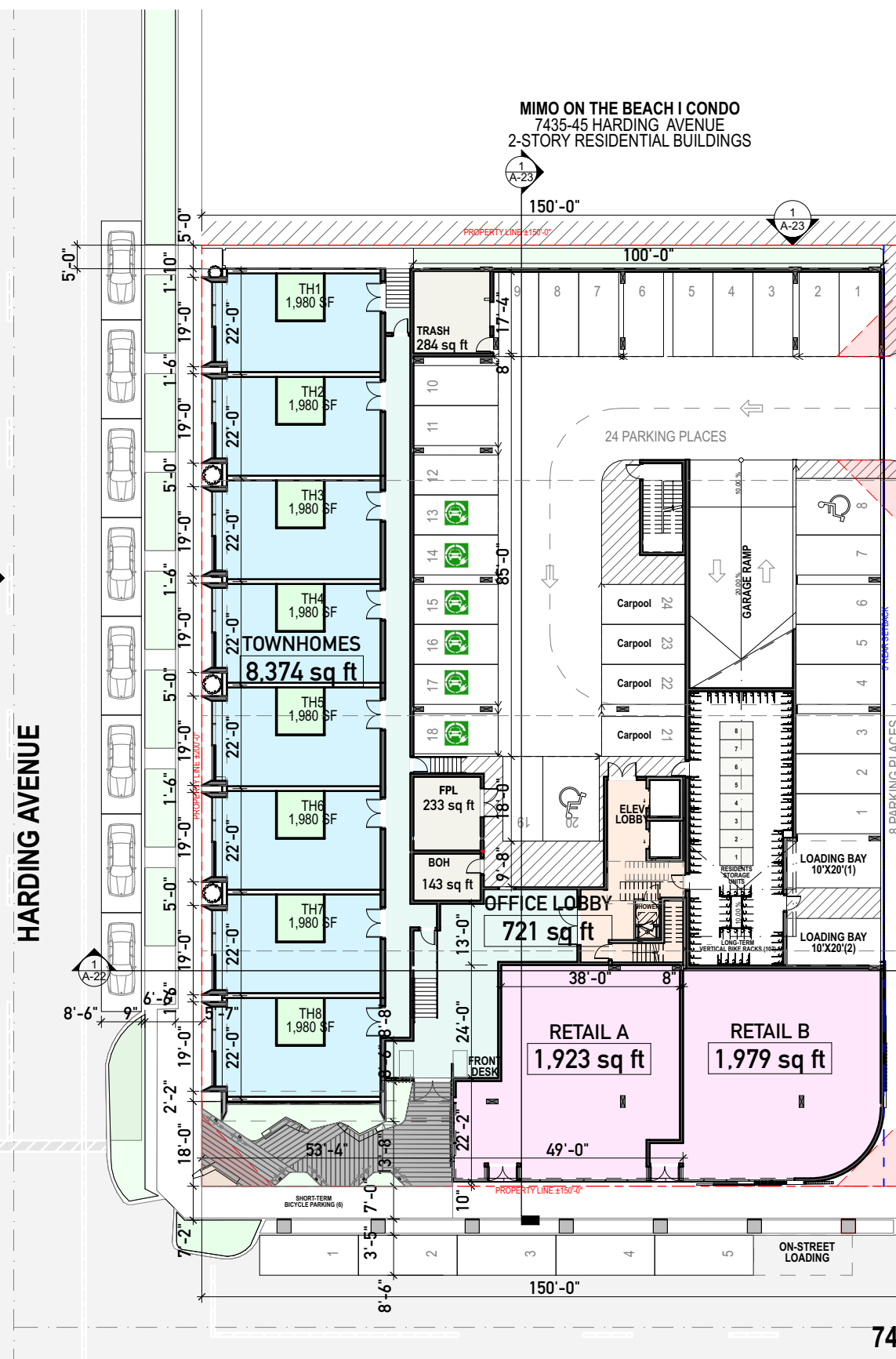
1/32" = 1'-0" CONTEXT ELEVATION-HARDING AVE 2



1/128" = 1'-0" KEYPLAN 3



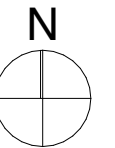




1/32" = 1'-0"

GROUND LEVEL

1



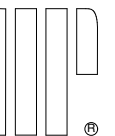
A-15

7401-7425 HARDING AVENUE

OVERALL GROUND FLOOR

5/6/24

HARDING FINAL HPB SUBMITTAL
URBAN ROBOT © 2024
AR#99232 Sebastian Velez



HARDING AVENUE

COLLINS COURT

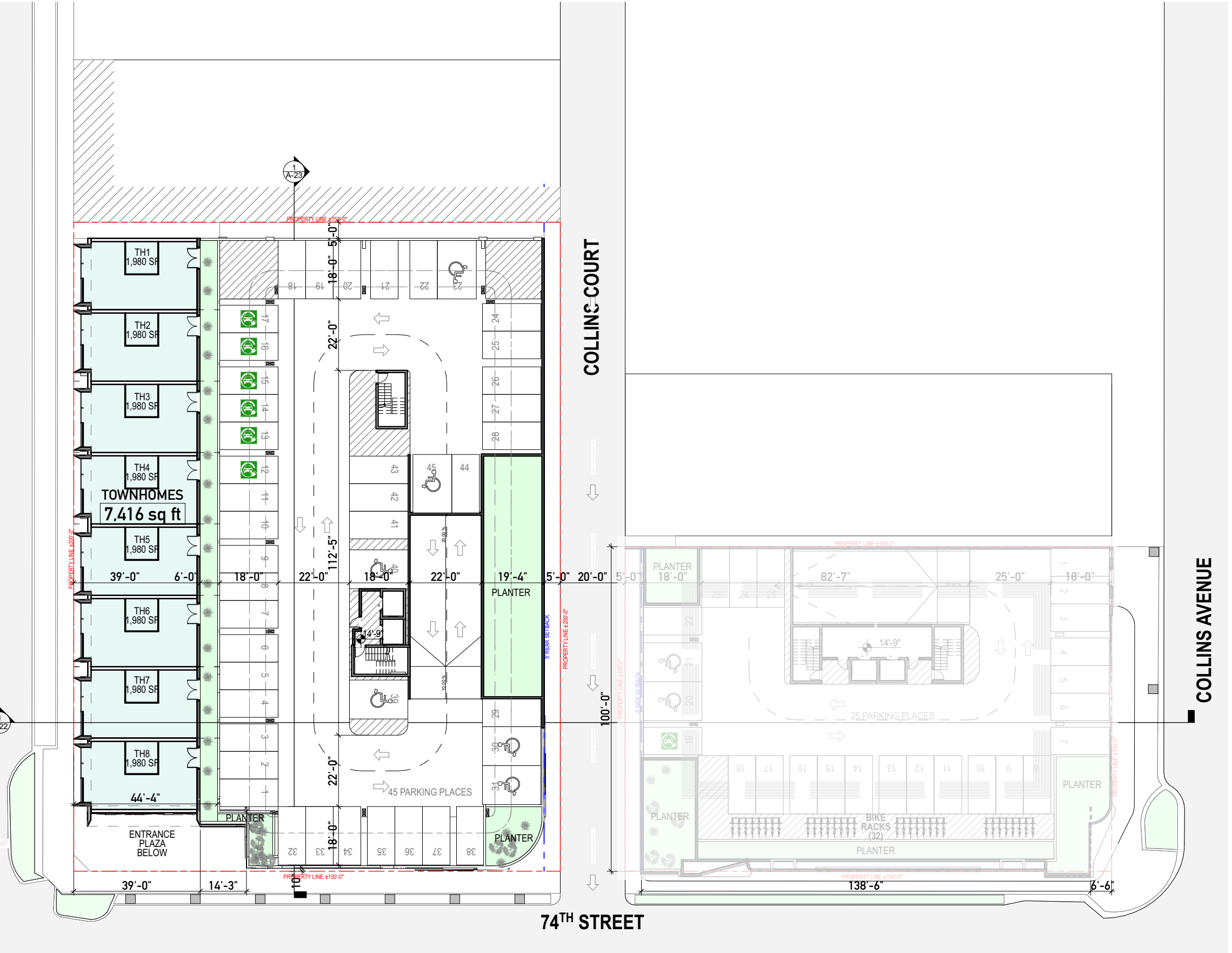
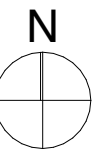
COLLINS AVENUE

74TH STREET

1/32" = 1'-0"

SECOND LEVEL

1



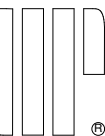
A-16

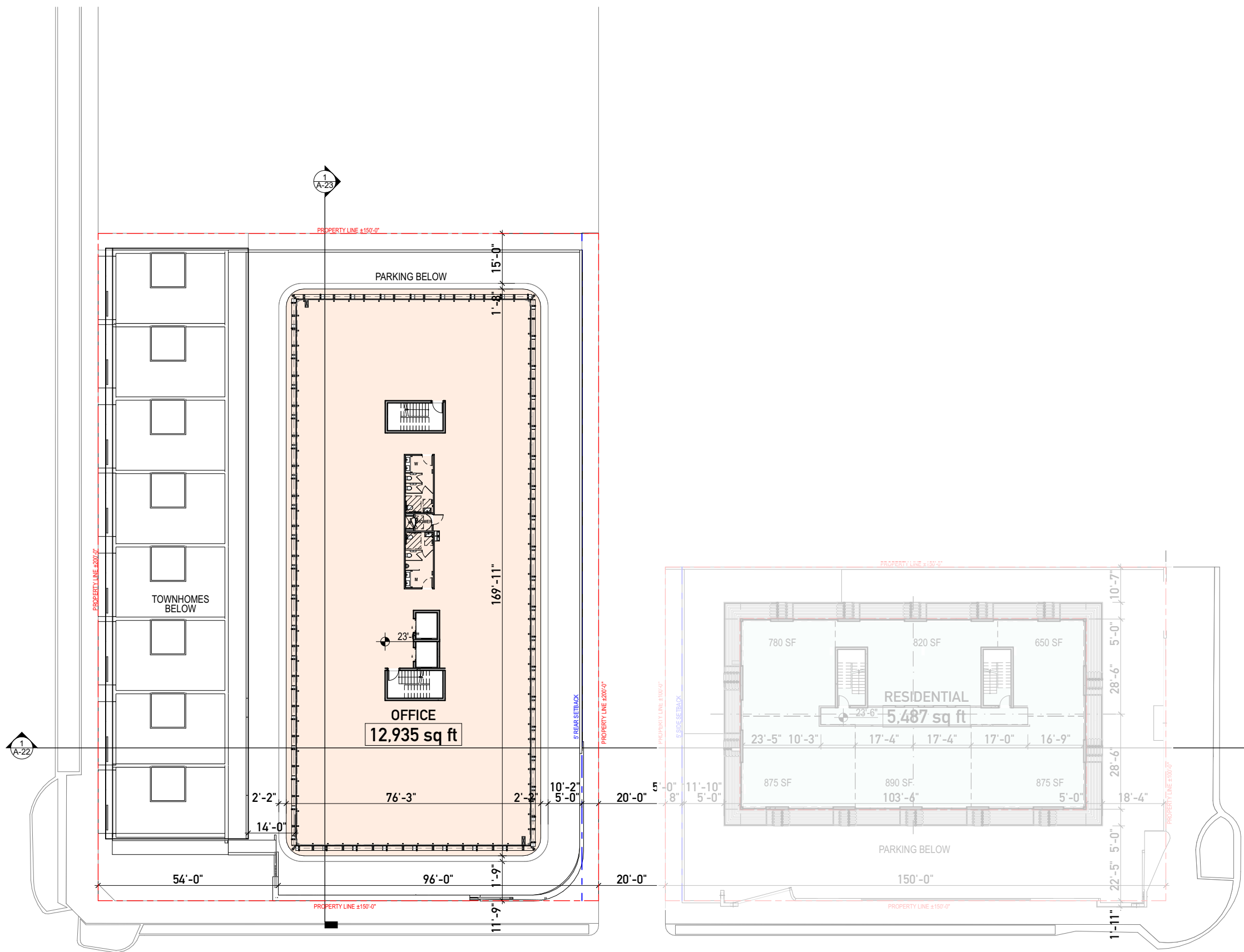
7401-7425 HARDING AVENUE

HARDING FINAL HPB SUBMITTAL
URBAN ROBOT © 2024
AR#99232 Sebastian Velez

OVERALL SECOND FLOOR - PARKING

5/6/24

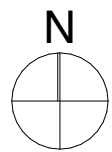




1/32" = 1'-0"

THIRD LEVEL

1



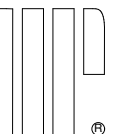
A-17

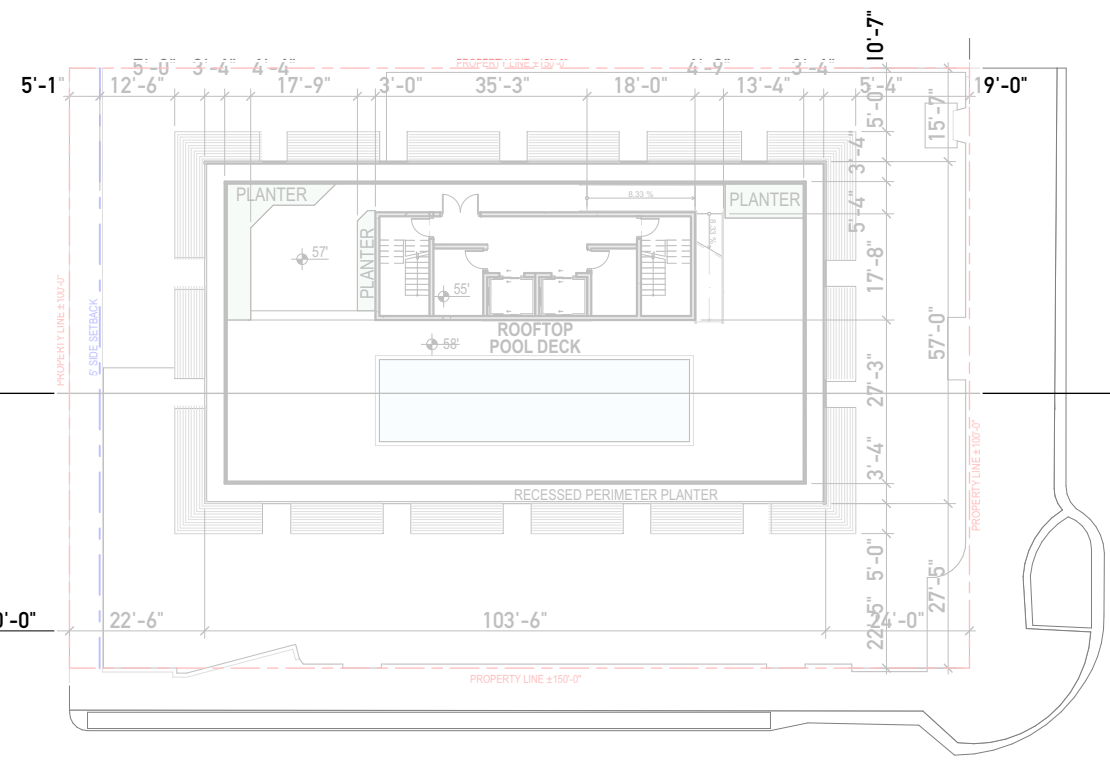
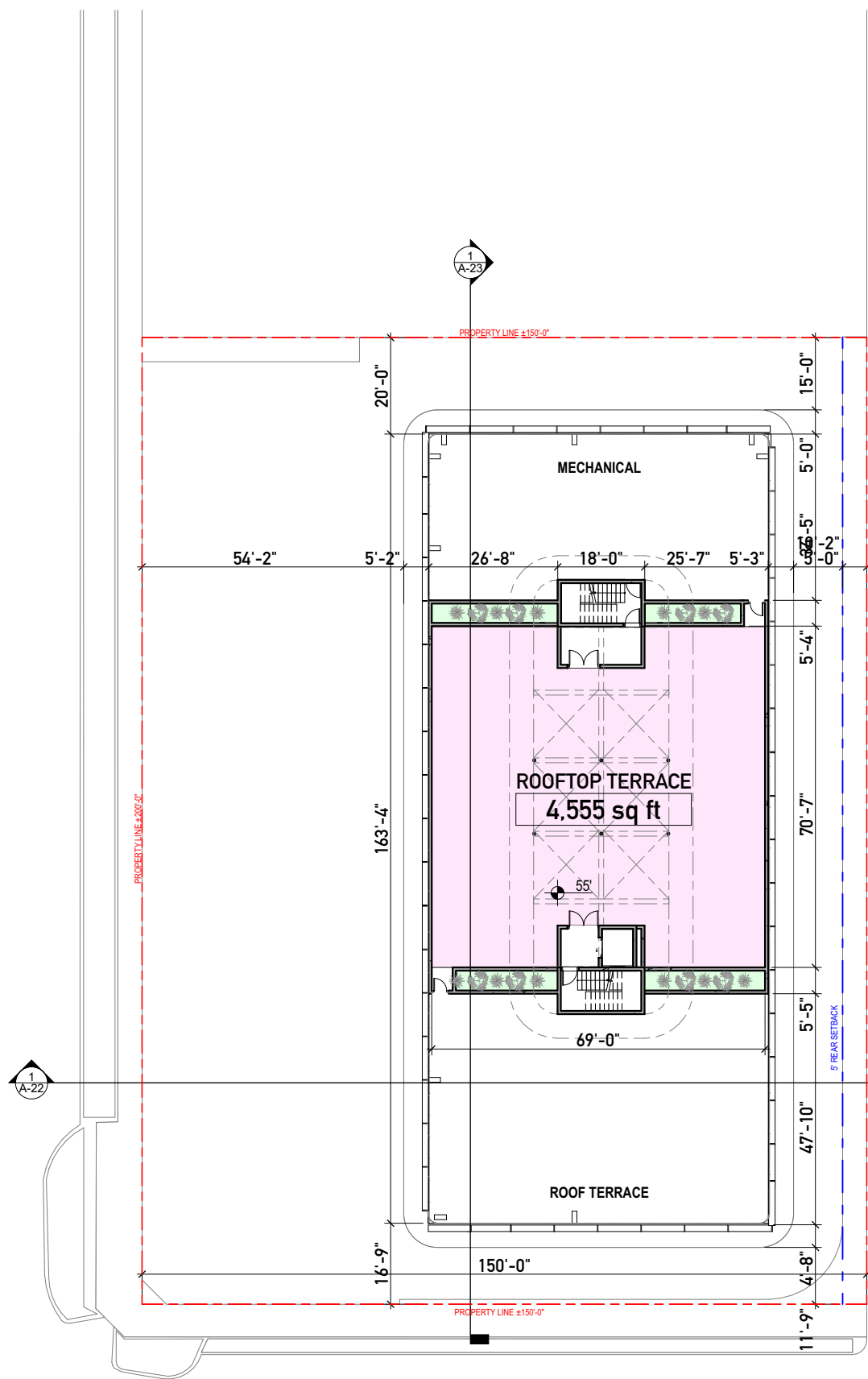
7401-7425 HARDING AVENUE

OVERALL THIRD - FIFTH FLOOR

5/6/24

HARDING FINAL HPB SUBMITTAL
URBAN ROBOT © 2024
AR#99232 Sebastian Velez

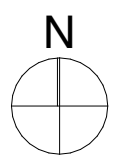




1/32" = 1'-0"

AMENITIES DECK

1



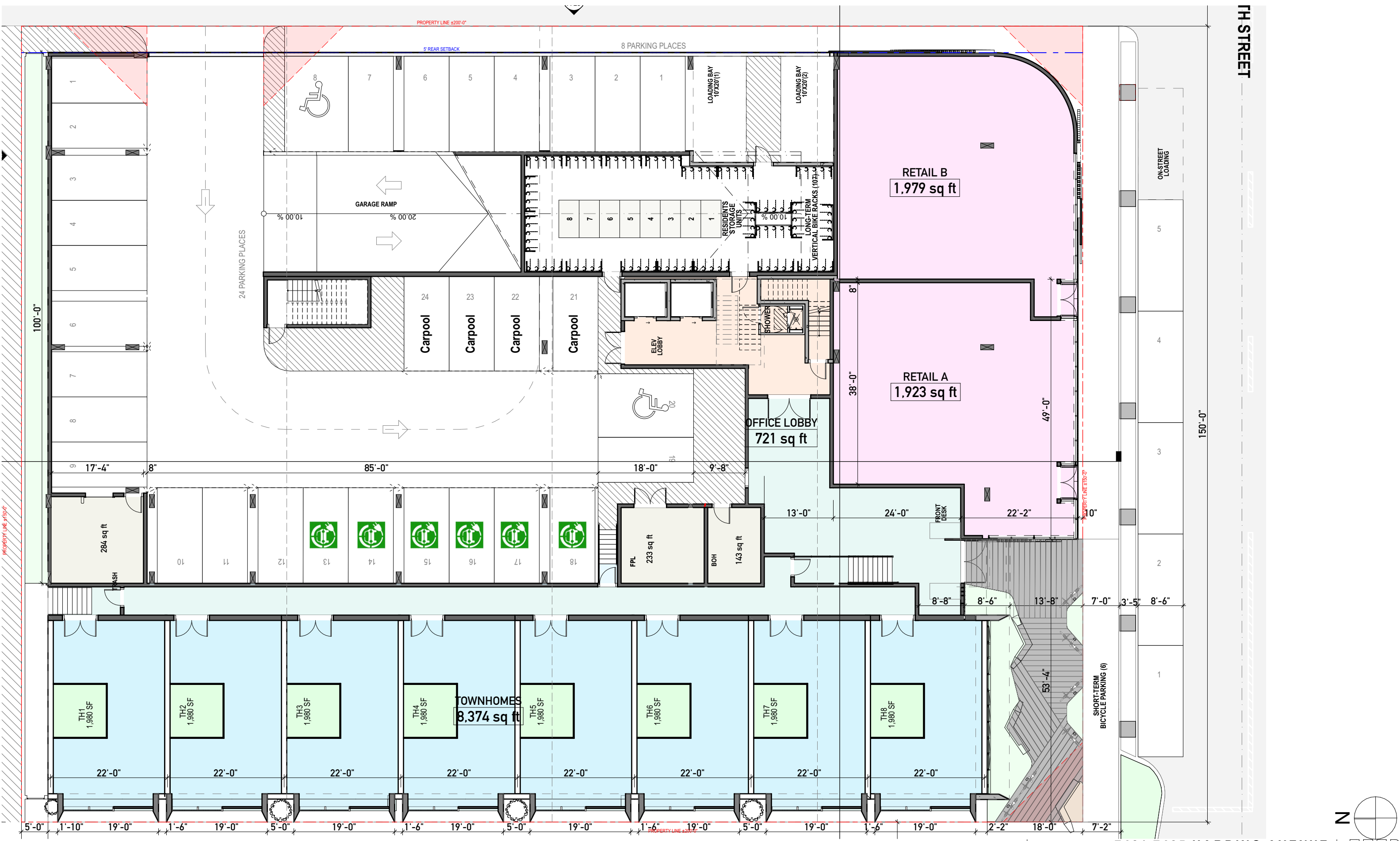
A-18

7401-7425 HARDING AVENUE

OVERALL ROOF TOP 5/6/24

HARDING FINAL HPB SUBMITTAL
URBAN ROBOT © 2024
AR#99232 Sebastian Velez



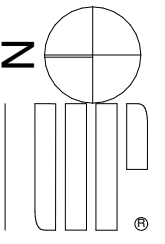


FH STREET

ON-STREET LOADING

150'-0"

SHORT-TERM BICYCLE PARKING (6)

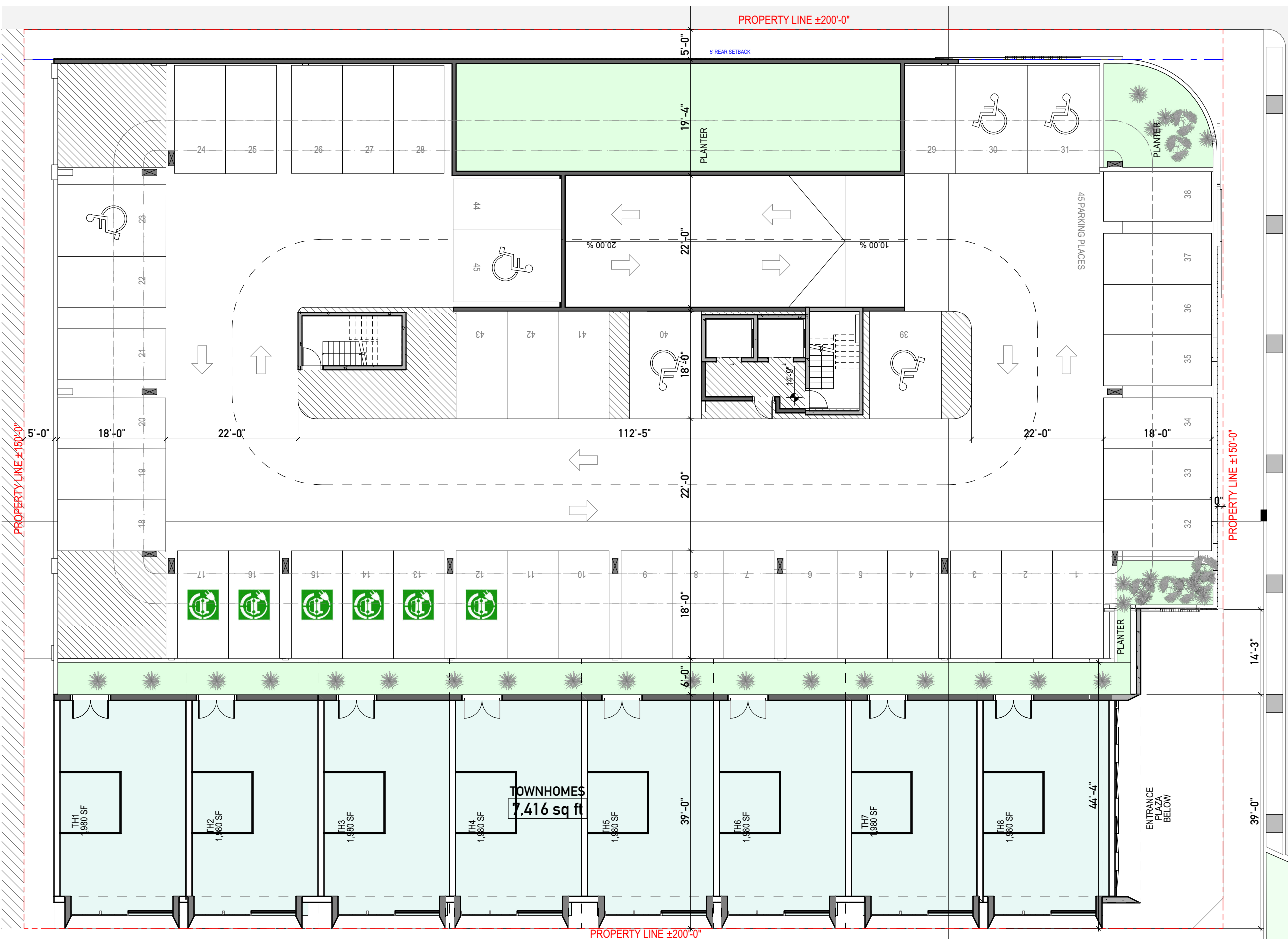


7401-7425 HARDING AVENUE

HARDING FINAL HPB SUBMITTAL
 URBAN ROBOT © 2024
 AR#99232 Sebastian Velez

ENLARGED GROUND FLOOR 5/6/24

A-19



PROPERTY LINE ±200'-0"

5' REAR SETBACK

TH STREET

PROPERTY LINE ±150'-0"

PROPERTY LINE ±150'-0"

PROPERTY LINE ±200'-0"

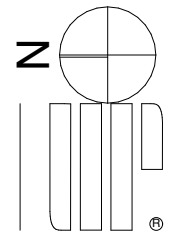
TOWNHOMES
7,416 sq ft

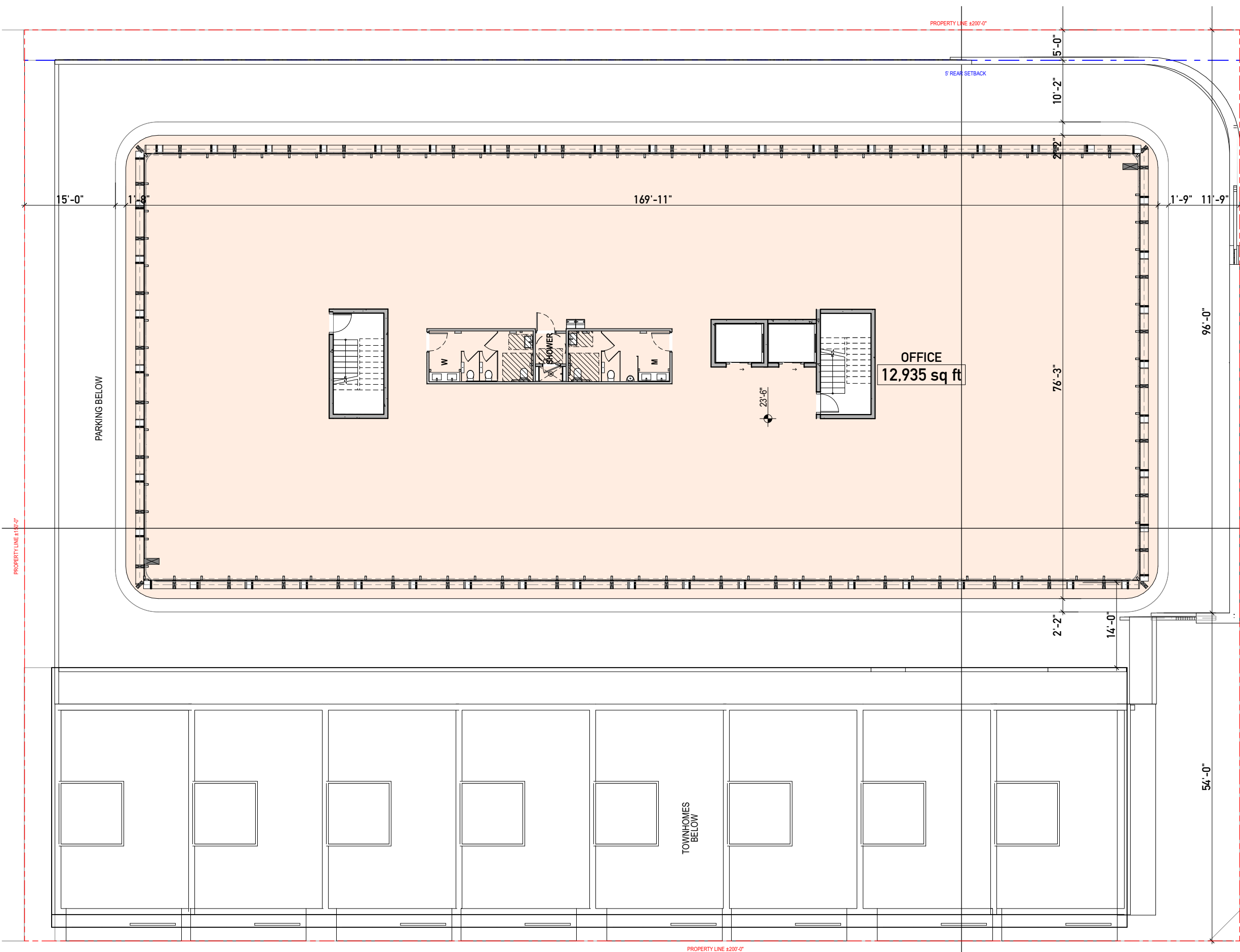
A-20

7401-7425 HARDING AVENUE

ENLARGED SECOND FLOOR 5/6/24

HARDING FINAL HPB SUBMITTAL
URBAN ROBOT © 2024
AR#99232 Sebastian Velez





PROPERTY LINE ±200'-0"

5' REAR SETBACK

15'-0"
10'-2"
5'-0"

169'-11"

1'-9" 11'-9"

96'-0"

OFFICE
12,935 sq ft

76'-3"

23'-6"

2'-2"

14'-0"

54'-0"

PARKING BELOW

TOWNHOMES
BELOW

PROPERTY LINE ±187'-0"

PROPERTY LINE ±192'-0"

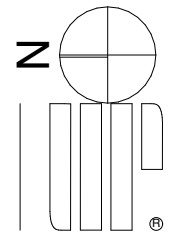
PROPERTY LINE ±200'-0"

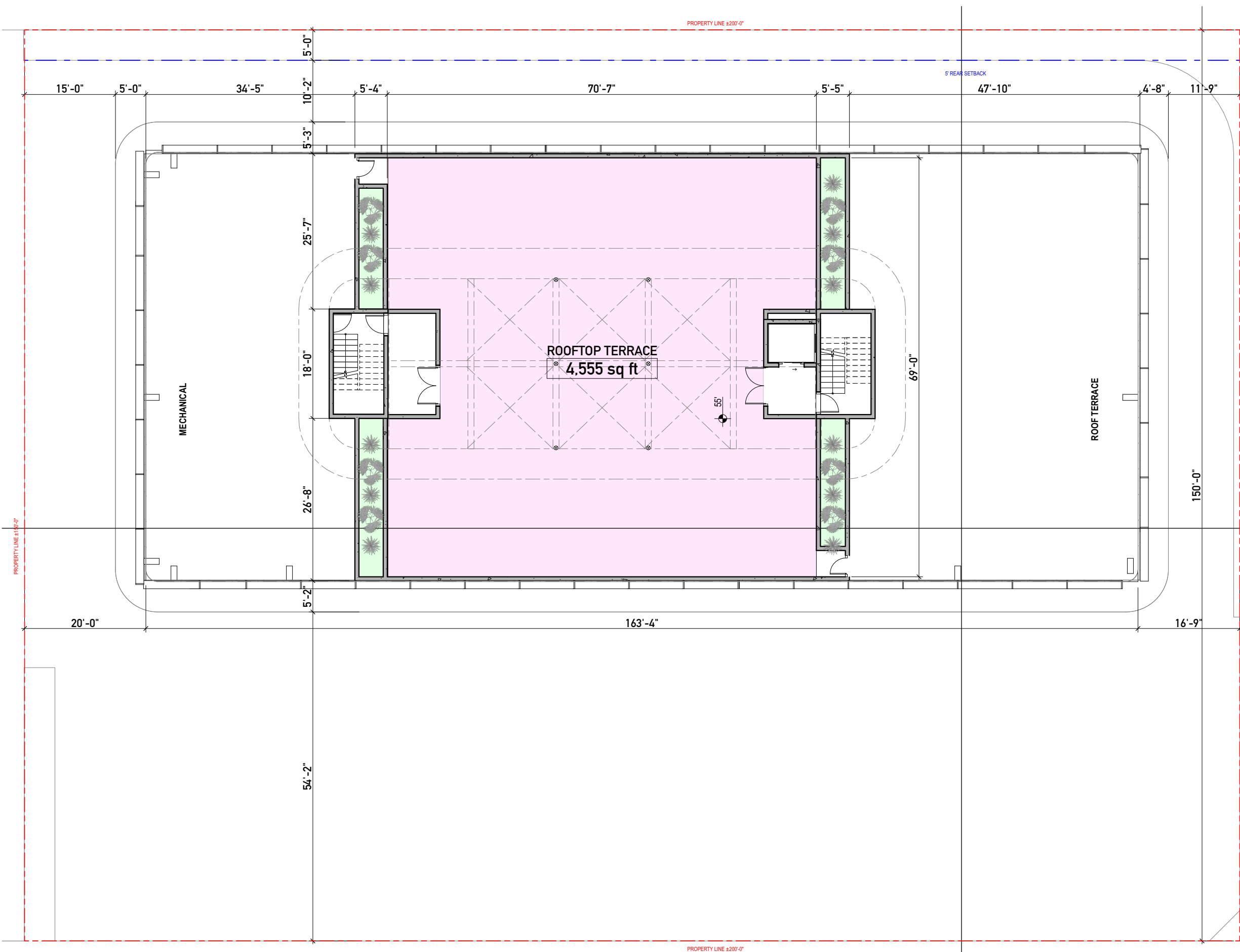
A-21

ENLARGED THIRD - FIFTH FLOOR 5/6/24

7401-7425 HARDING AVENUE

HARDING FINAL HPB SUBMITTAL
URBAN ROBOT © 2024
AR#99232 Sebastian Velez



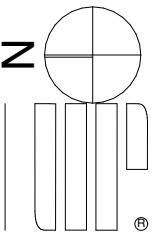


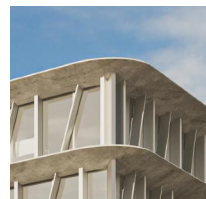
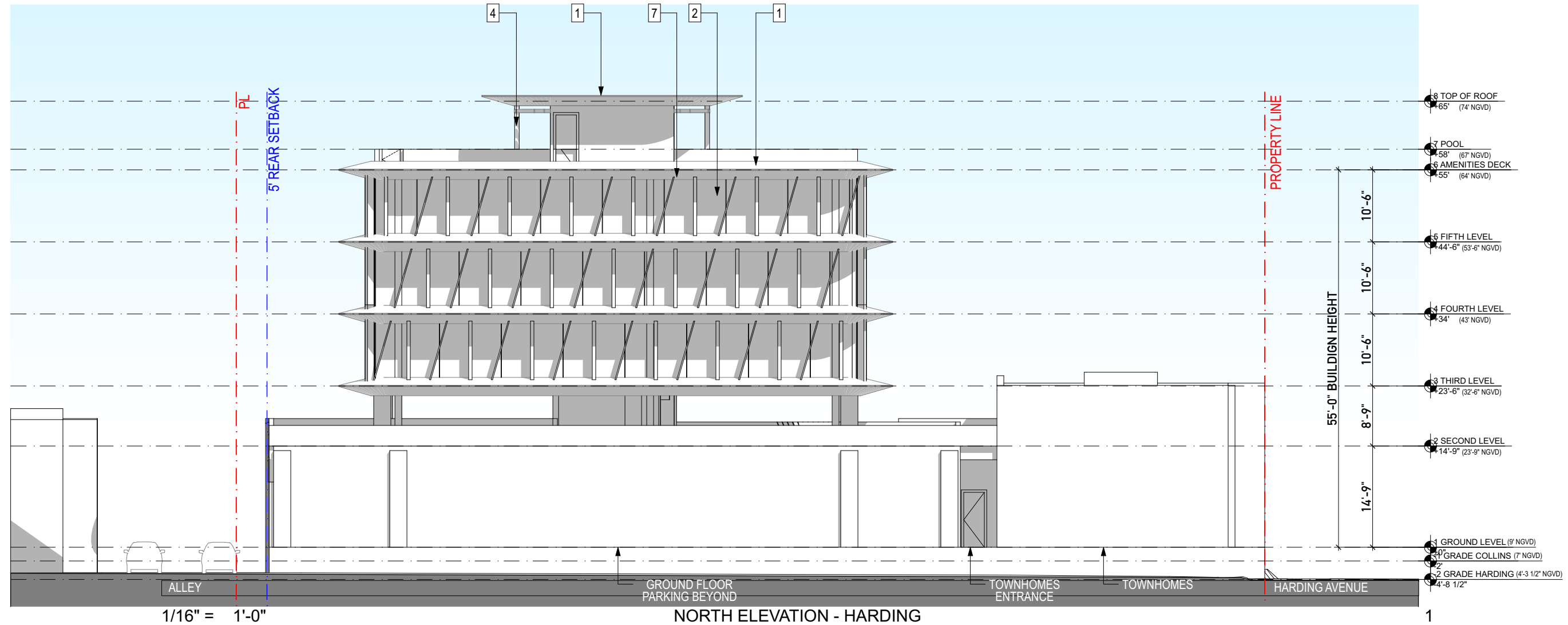
A-22

ENLARGED ROOF TOP 5/6/24

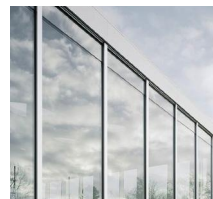
7401-7425 HARDING AVENUE

HARDING FINAL HPB SUBMITTAL
 URBAN ROBOT © 2024
 AR#99232 Sebastian Velez

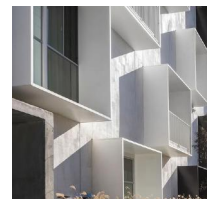




1 CUSTOM POURED CONCRETE SLAB



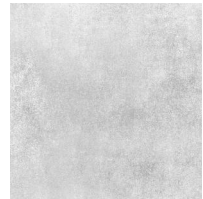
2 CLEAR GLASS GLAZING WITH ANODIZED METAL ALUMINUM



3 ALUMINUM METAL FRAME



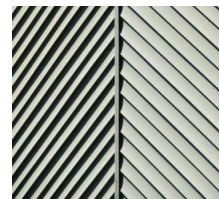
4 EXTERIOR WHITE STUCCO



5 LIGHT POURED CONCRETE FINISH



6 18" HIGH KNEEWALL, 4"x4" WHITE TILE



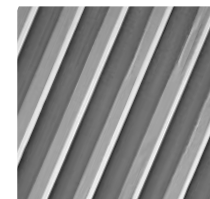
7 ALUMINUM WHITE POWDER-COATED LOUVERS



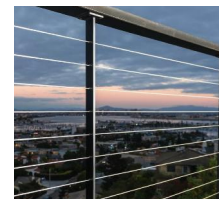
8 CUSTOM SLAB FEATURE WALL



9 MULTICOLOR POWDER-COATED LOUVERS



10 NEW FLUTED CONCRETE



11 ROOFTOP WIRE RAILING

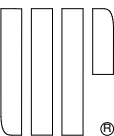
A-23

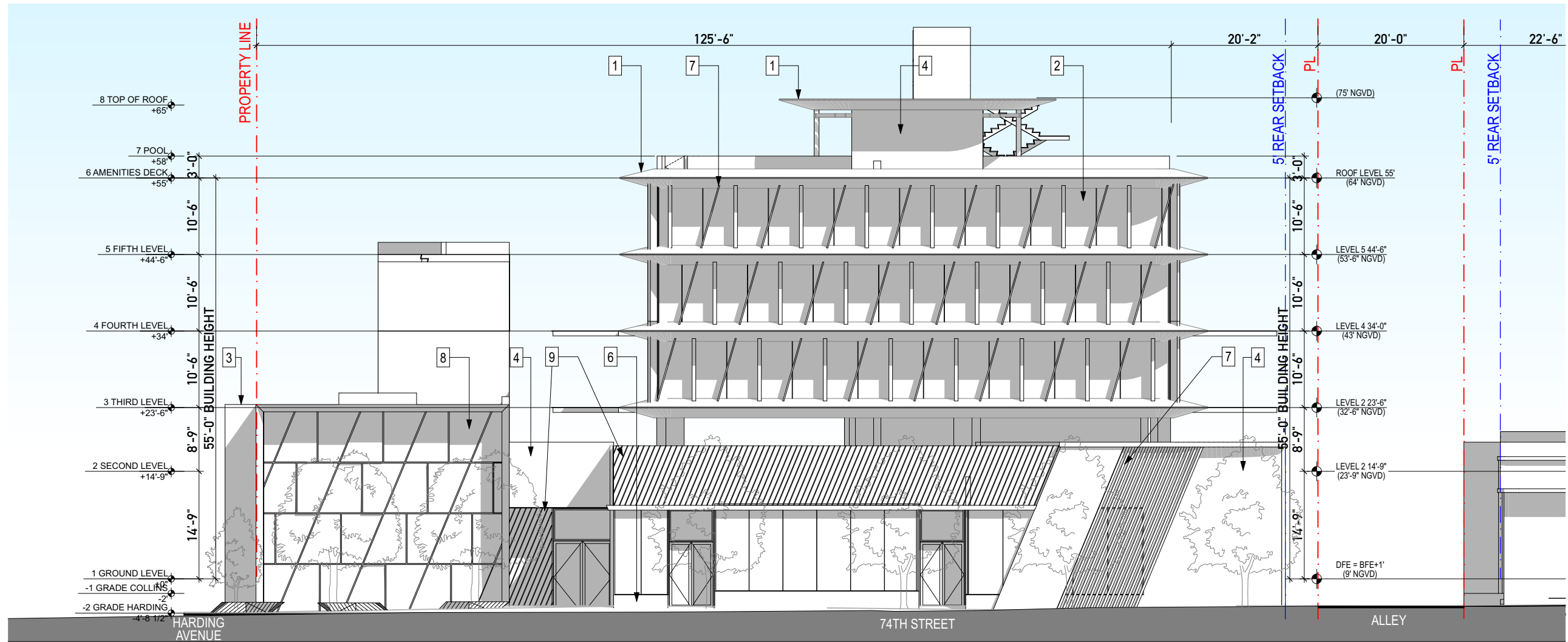
7401-7425 HARDING AVENUE

NORTH ELEVATION

5/6/24

HARDING FINAL HPB SUBMITTAL
URBAN ROBOT © 2024
AR#99232 Sebastian Velez

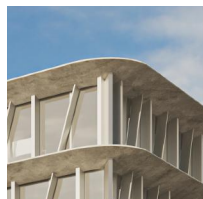




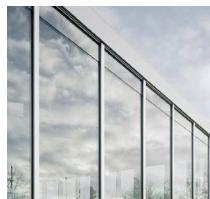
1/16" = 1'-0"

SOUTH ELEVATION

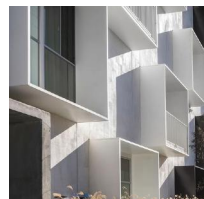
1



1 CUSTOM POURED CONCRETE SLAB



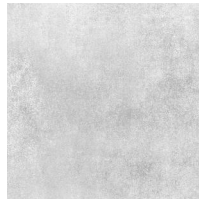
2 CLEAR GLASS GLAZING WITH ANODIZED METAL ALUMINUM



3 ALUMINUM METAL FRAME



4 EXTERIOR WHITE STUCCO



5 LIGHT POURED CONCRETE FINISH



6 18" HIGH KNEEWALL, 4"x4" WHITE TILE



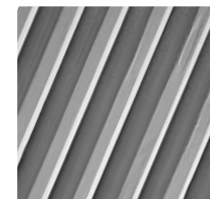
7 ALUMINUM WHITE POWDER-COATED LOUVERS



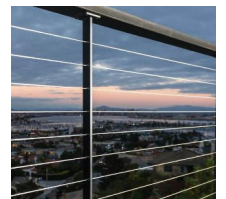
8 CUSTOM SLAB FEATURE WALL



9 MULTICOLOR POWDER-COATED LOUVERS



10 NEW FLUTED CONCRETE



11 ROOFTOP WIRE RAILING

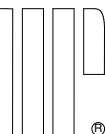
A-24

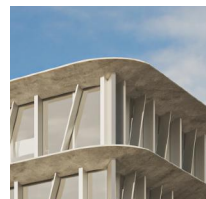
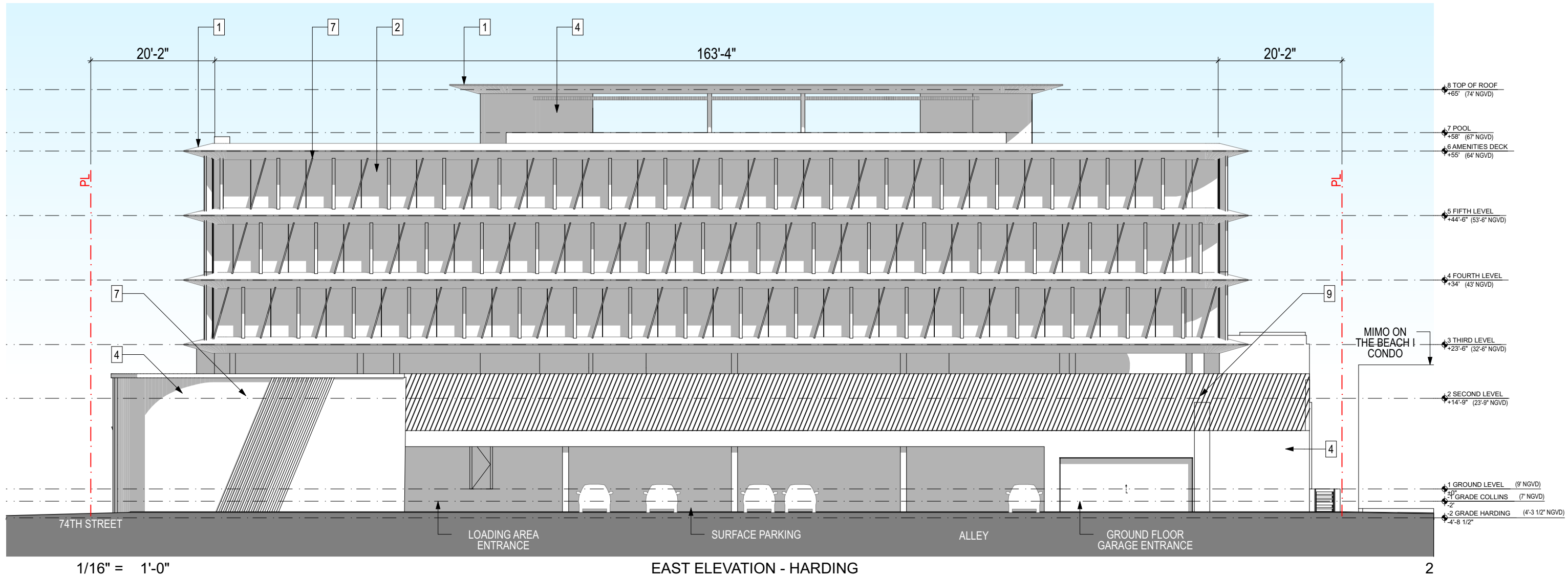
7401-7425 HARDING AVENUE

HARDING FINAL HPB SUBMITTAL
URBAN ROBOT © 2024
AR#99232 Sebastian Velez

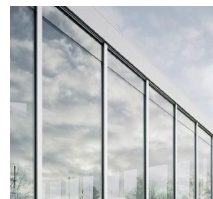
SOUTH ELEVATION

5/6/24

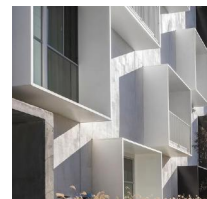




1 CUSTOM POURED CONCRETE SLAB



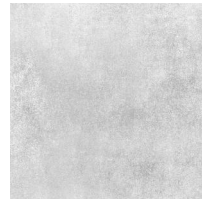
2 CLEAR GLASS GLAZING WITH ANODIZED METAL ALUMINUM



3 ALUMINUM METAL FRAME



4 EXTERIOR WHITE STUCCO



5 LIGHT POURED CONCRETE FINISH



6 18" HIGH KNEEWALL, 4"x4" WHITE TILE



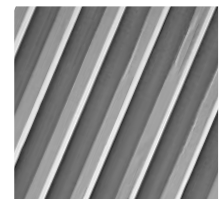
7 ALUMINUM WHITE POWDER-COATED LOUVERS



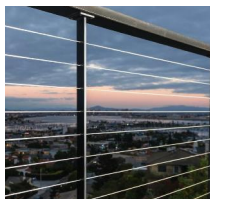
8 CUSTOM SLAB FEATURE WALL



9 MULTICOLOR POWDER-COATED LOUVERS



10 NEW FLUTED CONCRETE



11 ROOFTOP WIRE RAILING

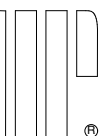
A-25

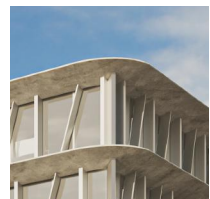
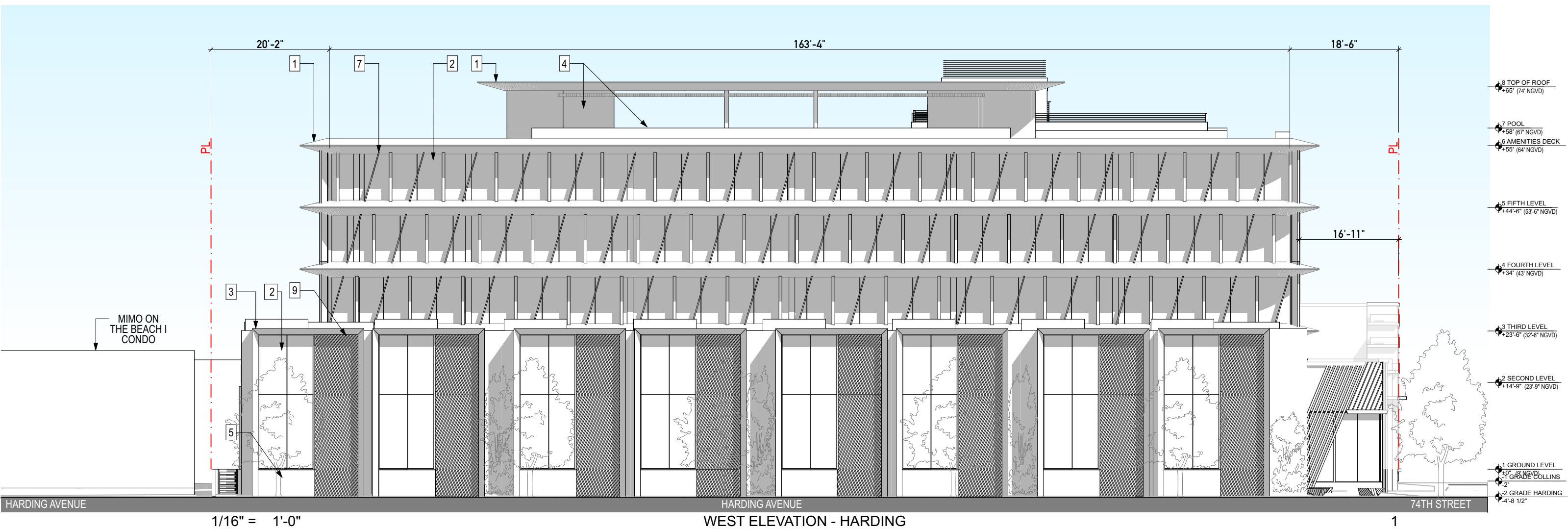
7401-7425 HARDING AVENUE

EAST ELEVATION

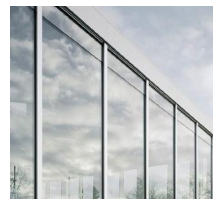
5/6/24

HARDING FINAL HPB SUBMITTAL
URBAN ROBOT © 2024
AR#99232 Sebastian Velez

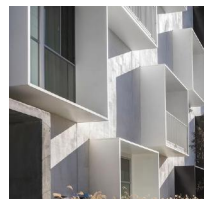




1 CUSTOM POURED CONCRETE SLAB



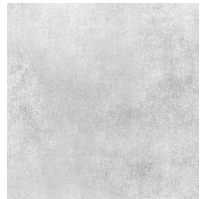
2 CLEAR GLASS GLAZING WITH ANODIZED METAL ALUMINUM



3 ALUMINUM METAL FRAME



4 EXTERIOR WHITE STUCCO



5 LIGHT POURED CONCRETE FINISH



6 18" HIGH KNEEWALL, 4"x4" WHITE TILE



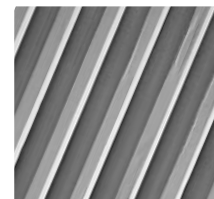
7 ALUMINUM WHITE POWDER-COATED LOUVERS



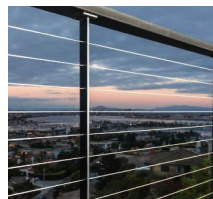
8 CUSTOM SLAB FEATURE WALL



9 MULTICOLOR POWDER-COATED LOUVERS



10 NEW FLUTED CONCRETE



11 ROOFTOP WIRE RAILING

A-26

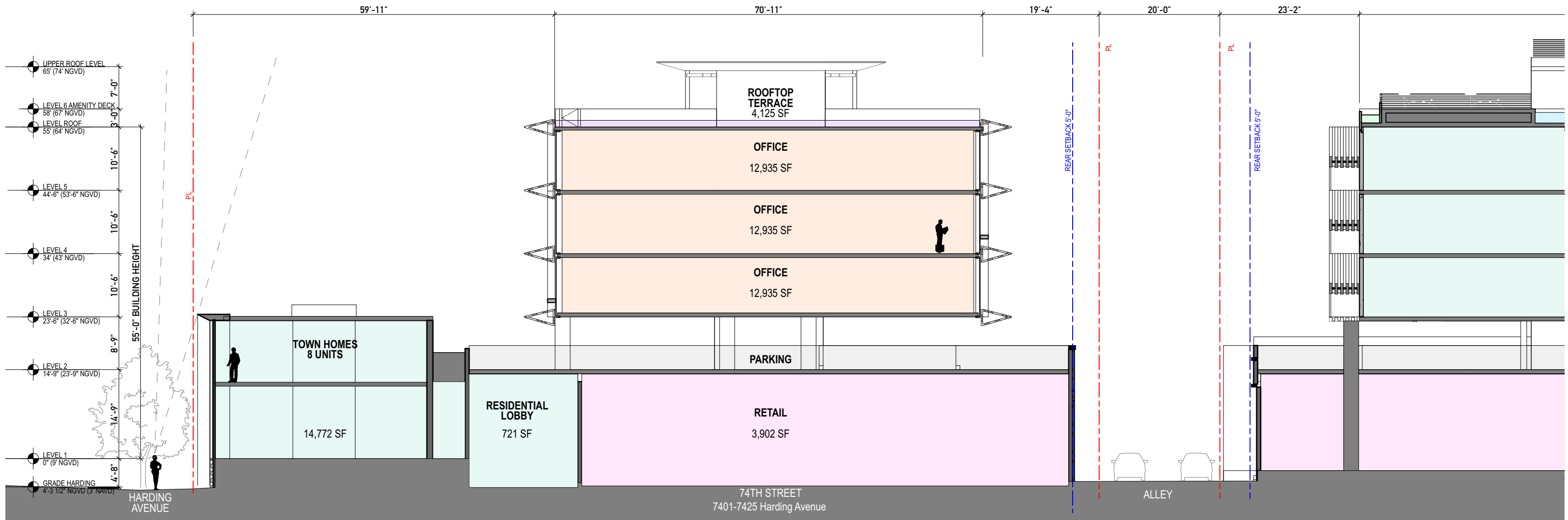
7401-7425 HARDING AVENUE

WEST ELEVATION

5/6/24

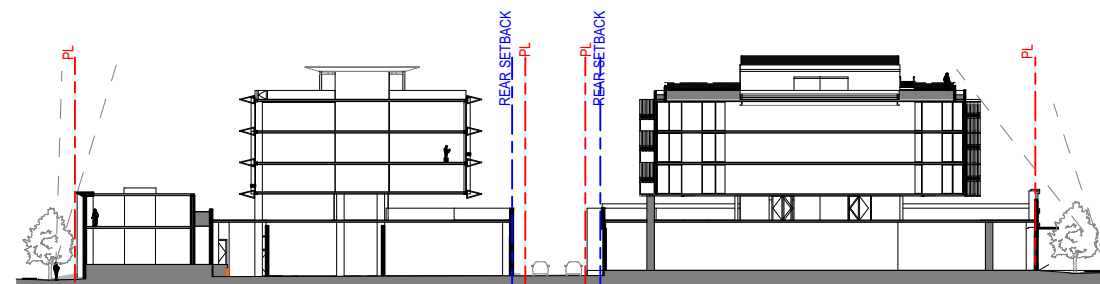
HARDING FINAL HPB SUBMITTAL
URBAN ROBOT © 2024
AR#99232 Sebastian Velez





1/16" = 1'-0"

CROSS SECTION



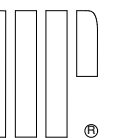
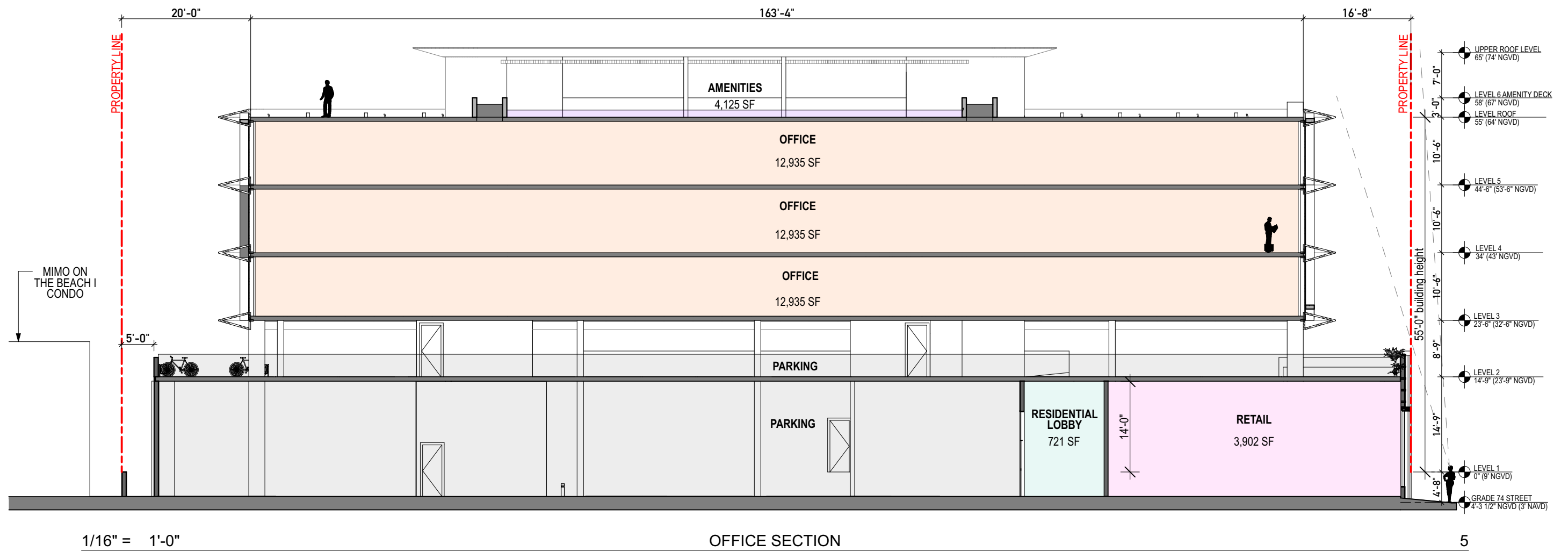
KEY SECTION

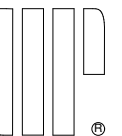
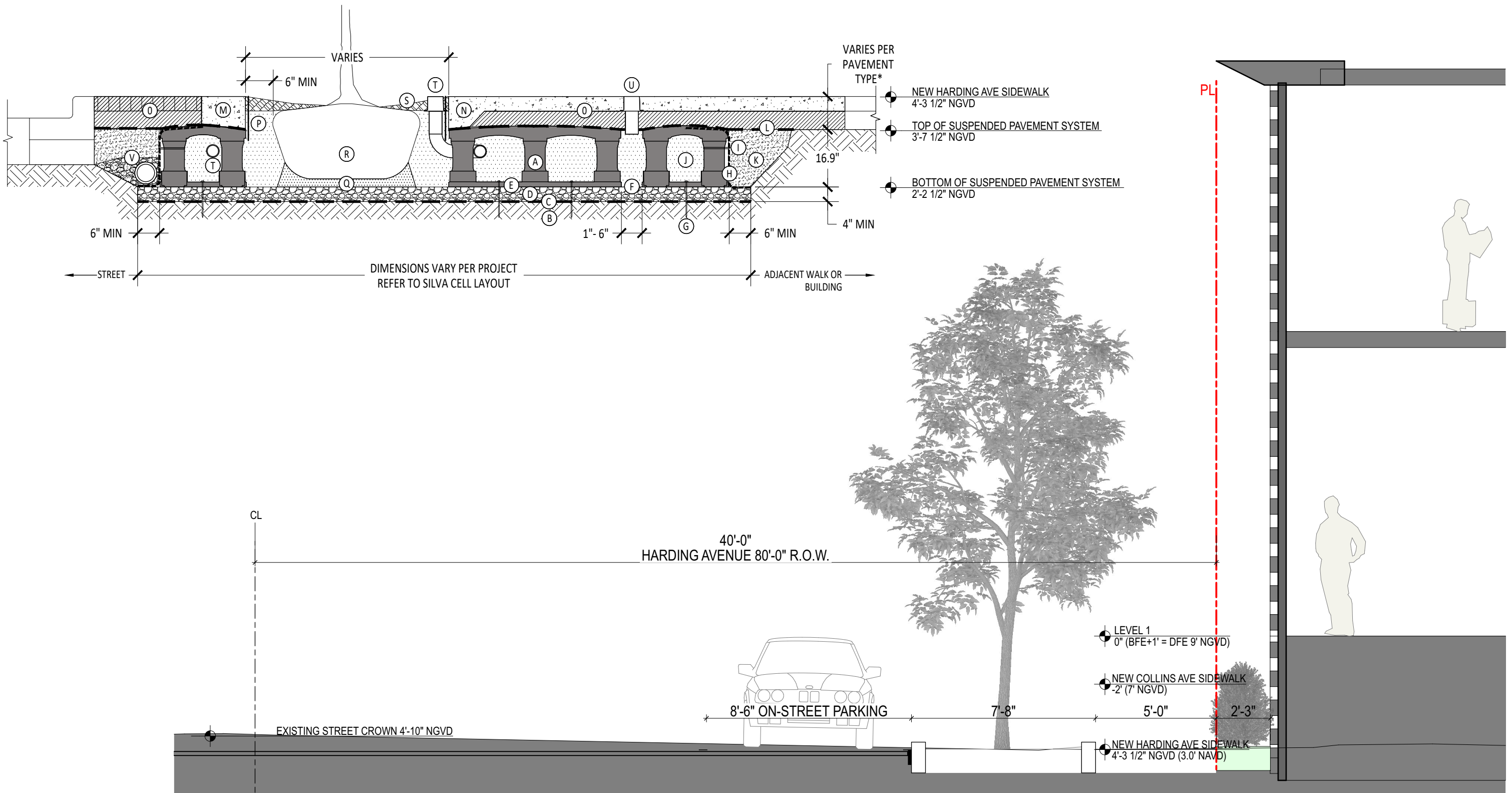
A-27

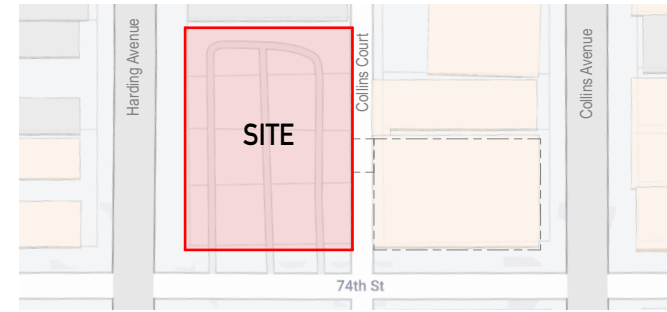
7401-7425 HARDING AVENUE

HARDING FINAL HPB SUBMITTAL
 URBAN ROBOT © 2024
 AR#99232 Sebastian Velez

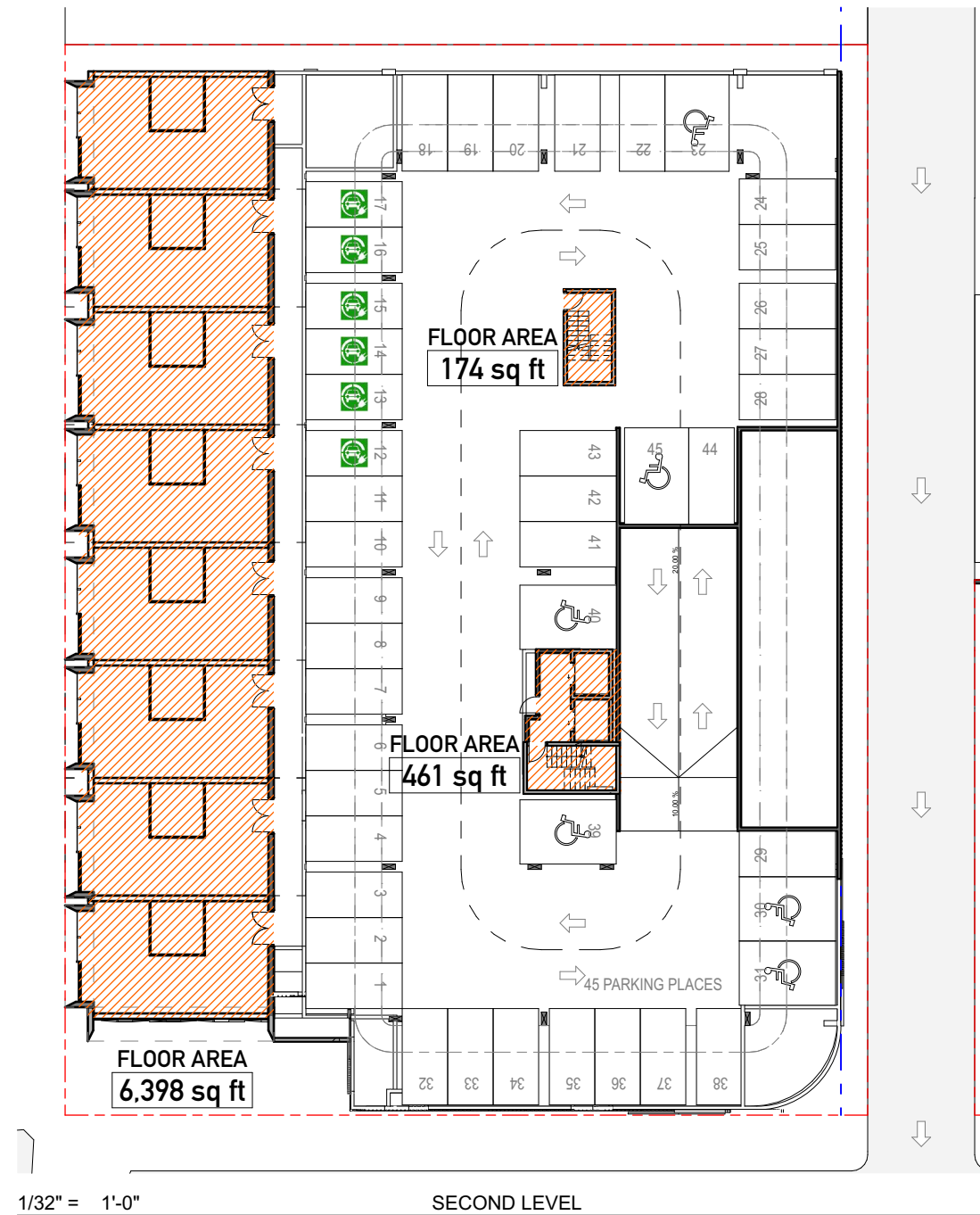
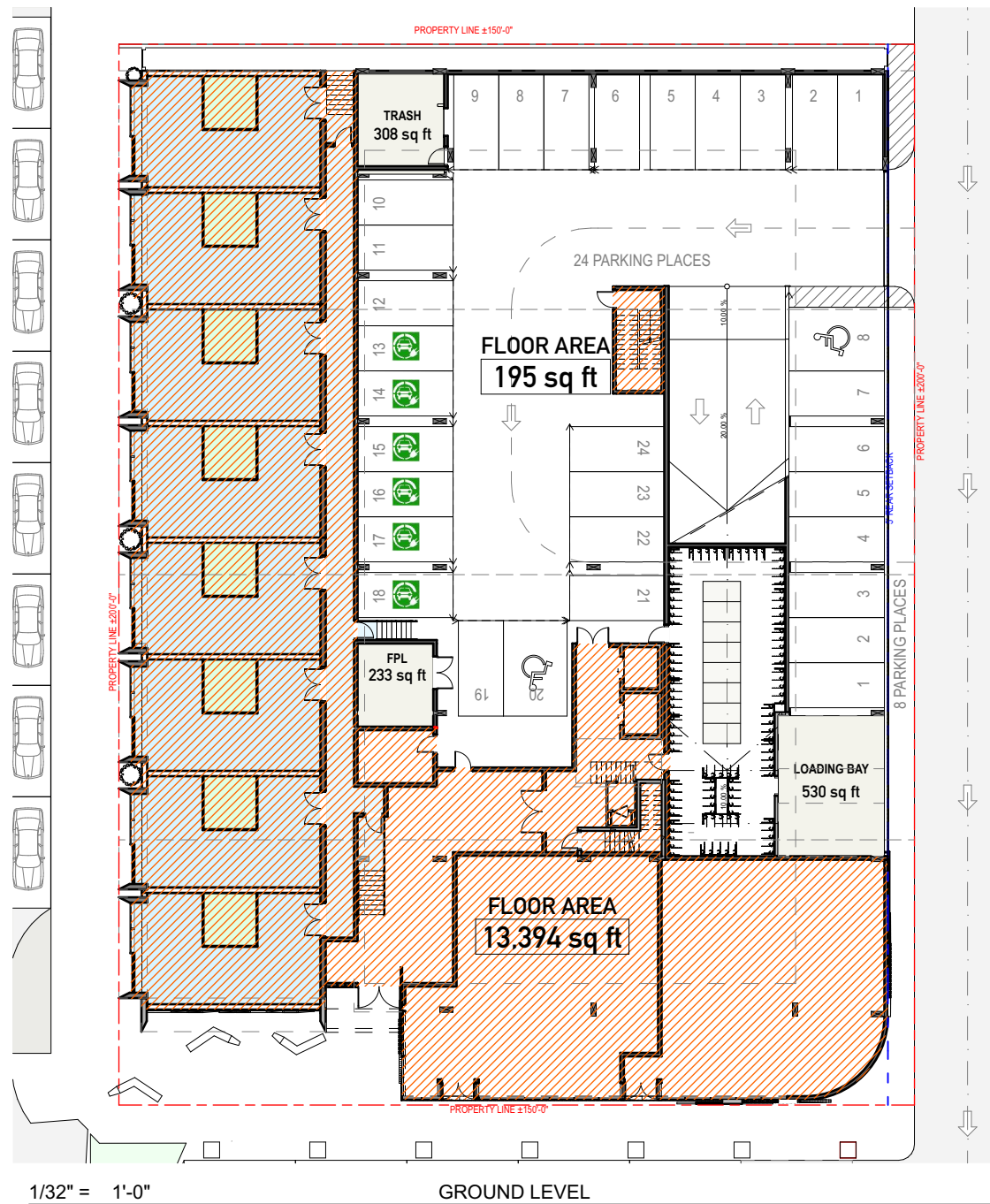








KEYPLAN

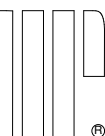


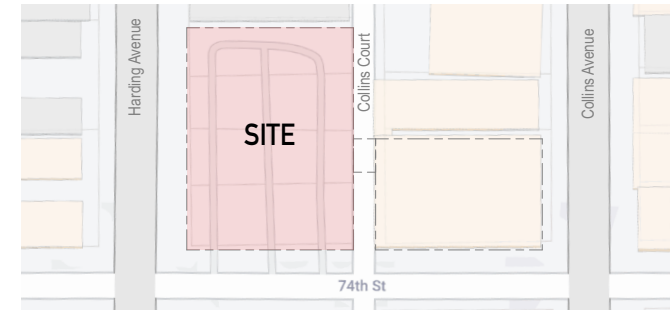
7410 COLLINS AVE
COLLINS FAR SCHEDULE

LOCATION	AREA
GROUND LEVEL	11,810.58
SECOND LEVEL	865.02
THIRD LEVEL	5,487.37
FOURTH LEVEL	5,487.37
FIFTH LEVEL	5,487.37
AMENITIES DECK	863.33
30,000 SF	

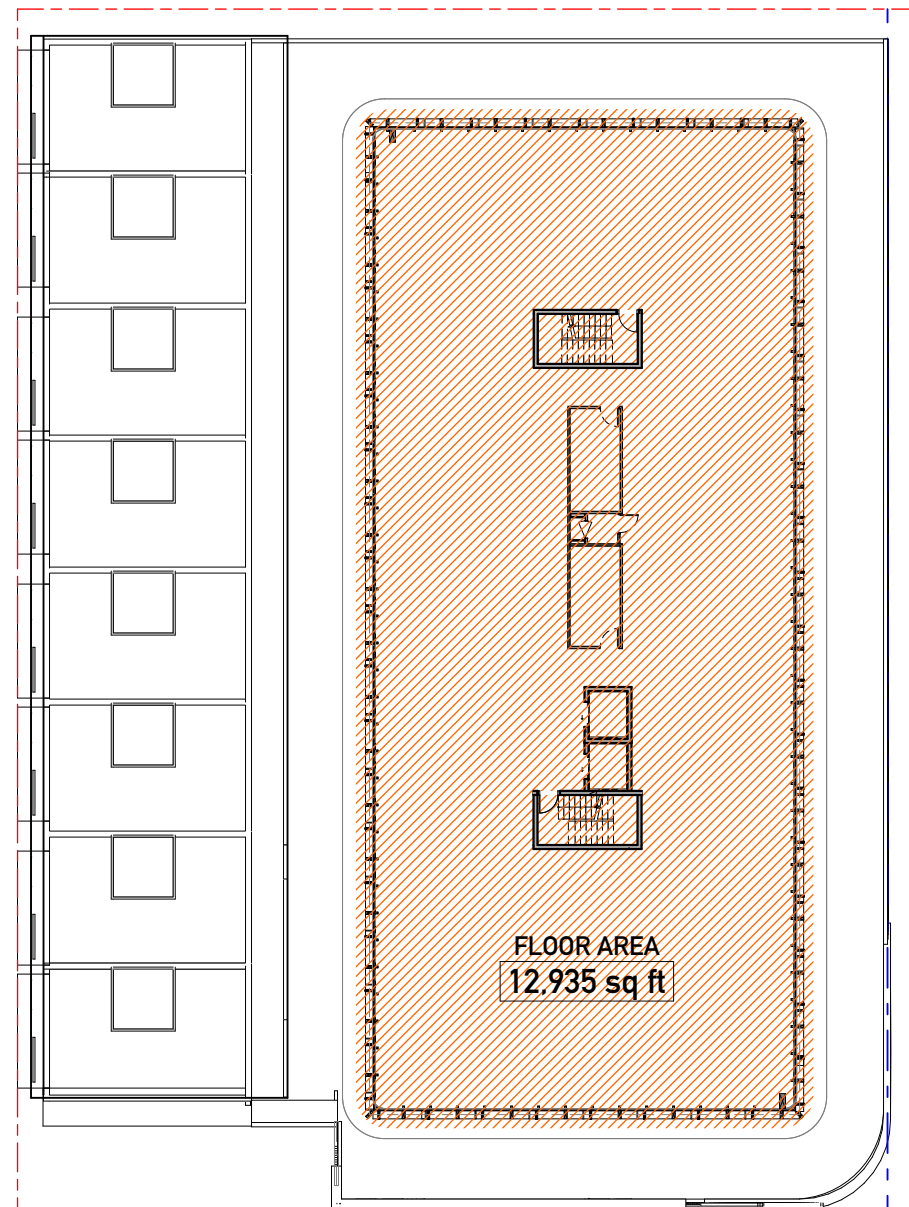
740-7425 HARDING AVE
HARDING FAR SCHEDULE

LOCATION	AREA
GROUND LEVEL	13,589.52
SECOND LEVEL	7,032.82
THIRD LEVEL	12,934.80
FOURTH LEVEL	12,934.80
FIFTH LEVEL	12,934.89
AMENITIES DECK	573.61
60,000 SF	
TOTAL FAR	90,000.00 sq ft





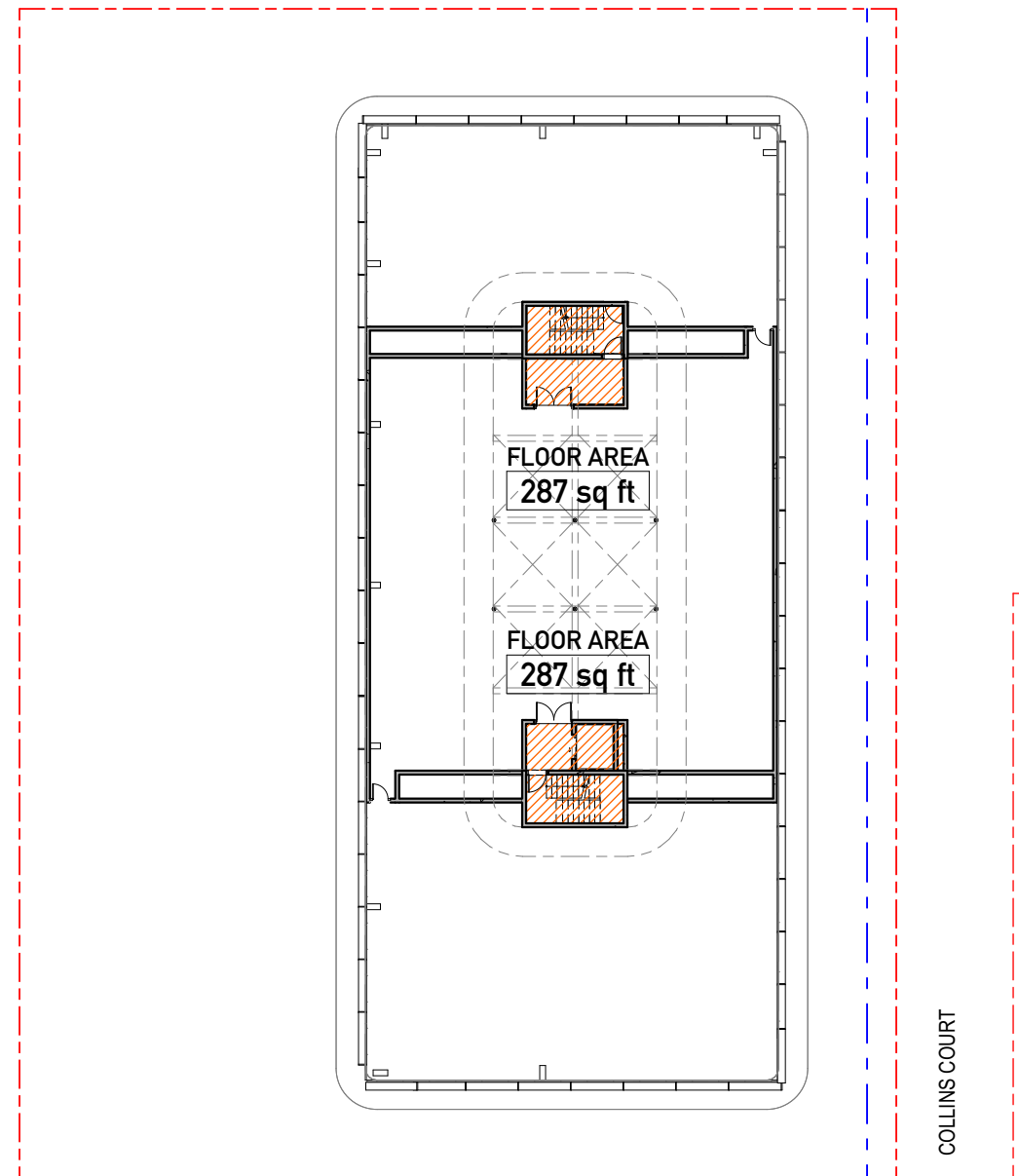
KEYPLAN



1/32" = 1'-0"

THIRD LEVEL-FIFTH LEVEL

1



1/32" = 1'-0"

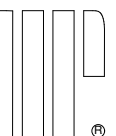
AMENITIES DECK

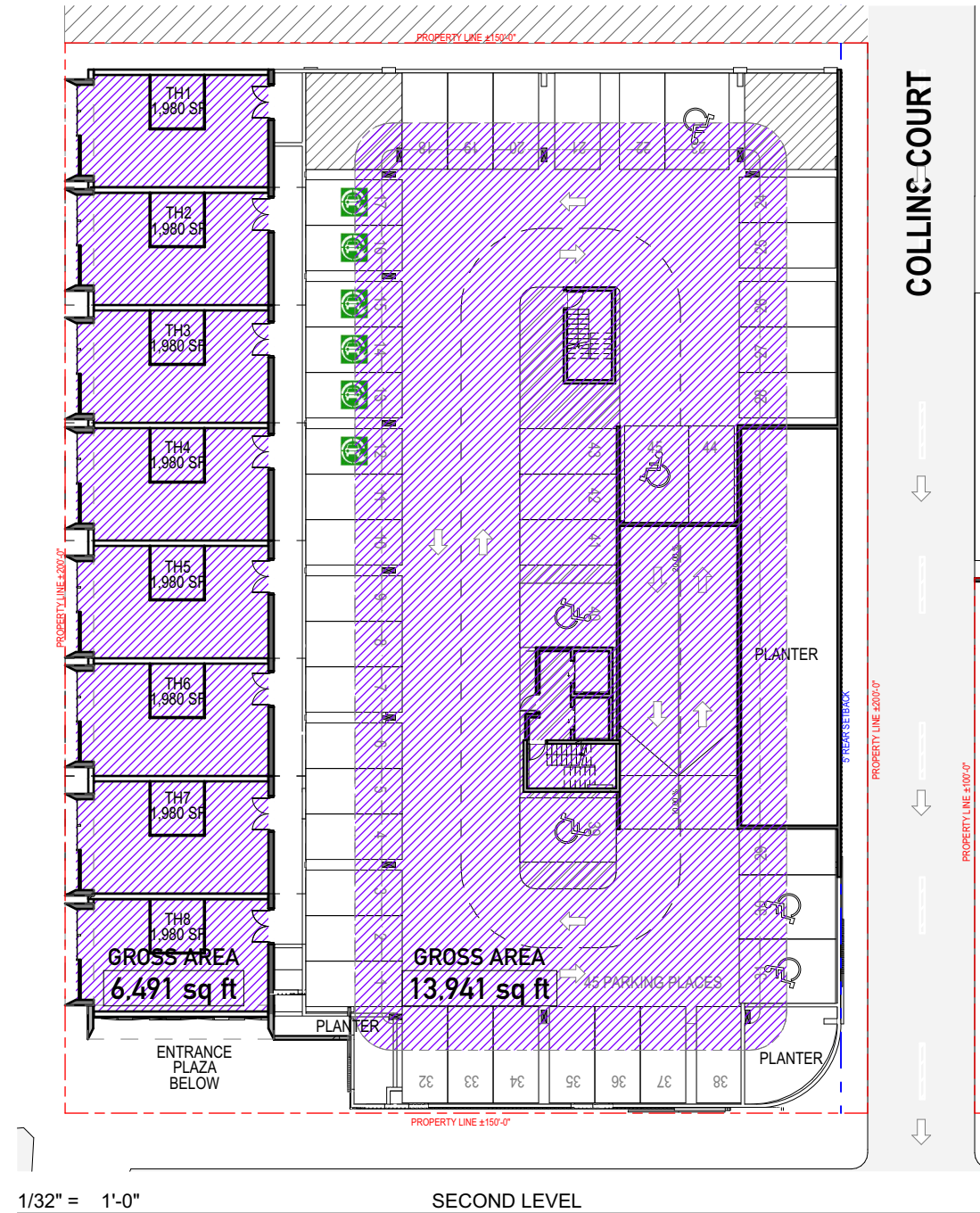
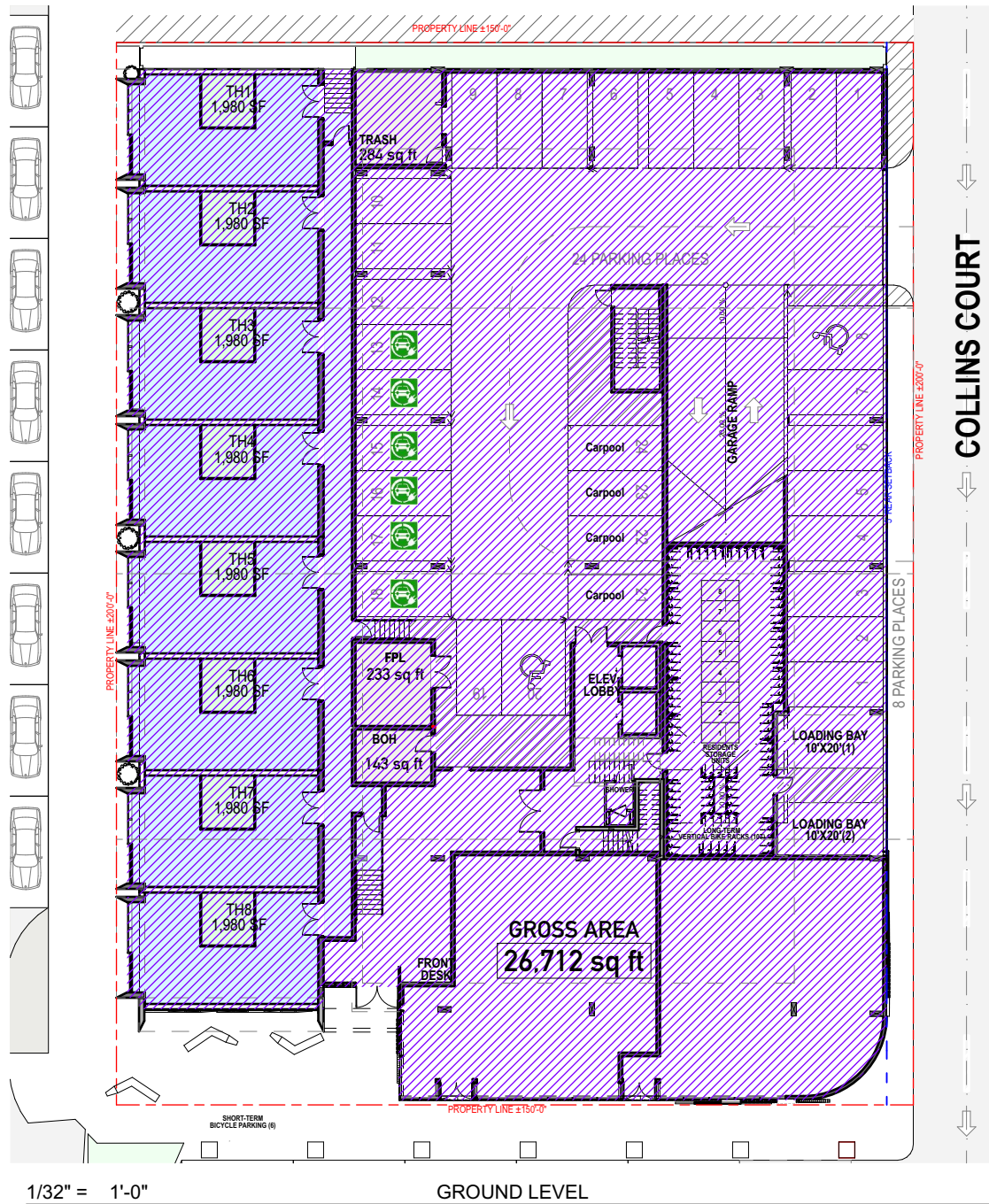
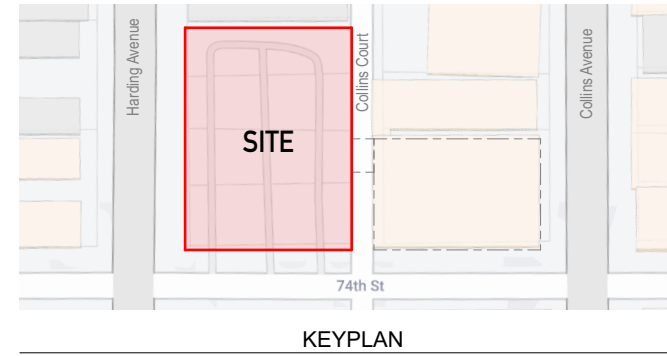
2

7410 COLLINS AVE	
COLLINS FAR SCHEDULE	
LOCATION	AREA
GROUND LEVEL	11,810.58
SECOND LEVEL	865.02
THIRD LEVEL	5,487.37
FOURTH LEVEL	5,487.37
FIFTH LEVEL	5,487.37
AMENITIES DECK	863.33
	30,000 SF

740-7425 HARDING AVE	
HARDING FAR SCHEDULE	
LOCATION	AREA
GROUND LEVEL	13,589.52
SECOND LEVEL	7,032.82
THIRD LEVEL	12,934.80
FOURTH LEVEL	12,934.80
FIFTH LEVEL	12,934.89
AMENITIES DECK	573.61
	60,000 SF
TOTAL FAR	90,000.00 sq ft

A-31





Gross Areas - Harding	
LOCATION	AREA
GROUND LEVEL	26,712.36
SECOND LEVEL	20,431.95
THIRD LEVEL	11,526.35
FOURTH LEVEL	11,526.35
FIFTH LEVEL	11,526.35
AMENITIES DECK	5,362.47
	87,085.83 ft ²

1/32" = 1'-0"

GROUND LEVEL

1

1/32" = 1'-0"

SECOND LEVEL

2

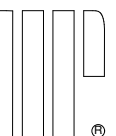
A-32

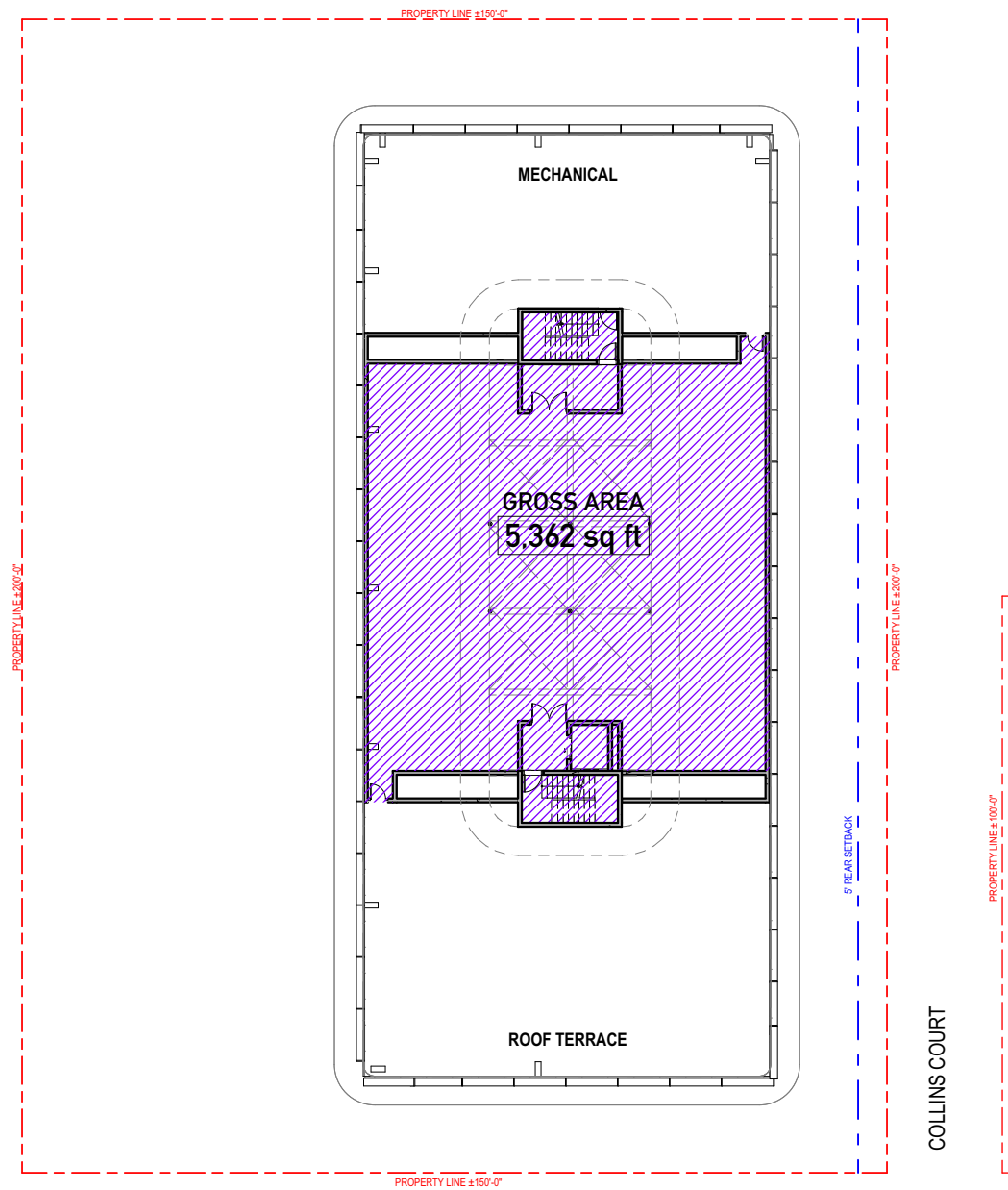
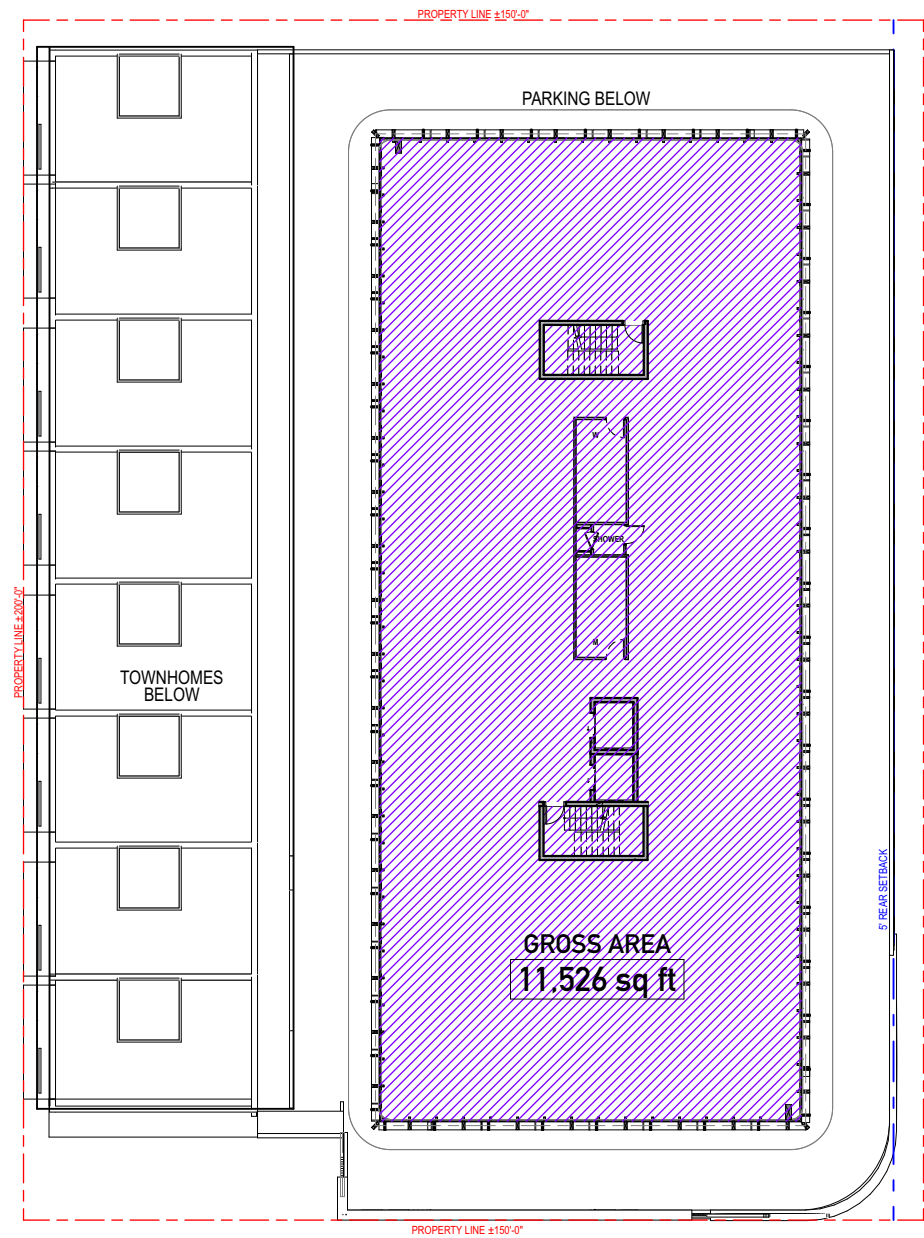
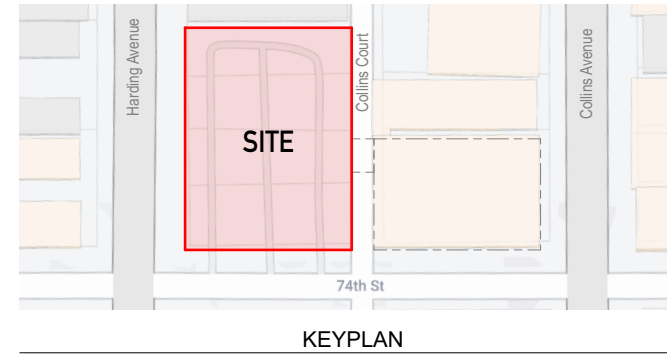
GROSS DIAGRAMS

5/6/24

7410 COLLINS AVENUE

HARDING FINAL HPB SUBMITTAL
URBAN ROBOT © 2024
AR#99232 Sebastian Velez





Gross Areas - Harding	
LOCATION	AREA
GROUND LEVEL	26,712.36
SECOND LEVEL	20,431.95
THIRD LEVEL	11,526.35
FOURTH LEVEL	11,526.35
FIFTH LEVEL	11,526.35
AMENITIES DECK	5,362.47
	87,085.83 ft ²

1/32" = 1'-0"

THIRD LEVEL-FIFTH LEVEL

1

1/32" = 1'-0"

AMENITIES DECK

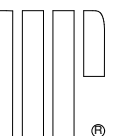
2

A-33

GROSS DIAGRAMS 5/6/24

7410 COLLINS AVENUE

HARDING FINAL HPB SUBMITTAL
URBAN ROBOT © 2024
AR#99232 Sebastian Velez





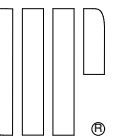
Pedestrian view from the Collins Ave/ 74th Street intersection

A-34

7401-7425 HARDING AVENUE

HARDING FINAL HPB SUBMITTAL
URBAN ROBOT © 2024
AR#99232 Sebastian Velez

3 D VIEWS 5/6/24



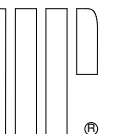


Aerial view

A-35

7401-7425 HARDING AVENUE

HARDING FINAL HPB SUBMITTAL
URBAN ROBOT © 2024
AR#99232 Sebastian Velez





Pedestrian view from the Harding Ave/ 74th Street intersection

A-36

3 D VIEWS 5/6/24

7401-7425 HARDING AVENUE

HARDING FINAL HPB SUBMITTAL
URBAN ROBOT © 2024
AR#99232 Sebastian Velez





Pedestrian view along the 74th street

A-37

7401-7425 HARDING AVENUE

3 D VIEWS 5/6/24

HARDING FINAL HPB SUBMITTAL
URBAN ROBOT © 2024
AR#99232 Sebastian Velez





Pedestrian view along Harding Ave looking North

A-38

7401-7425 HARDING AVENUE

3 D VIEWS 5/6/24

HARDING FINAL HPB SUBMITTAL
URBAN ROBOT © 2024
AR#99232 Sebastian Velez

