

# THE PARK CENTRAL HOTEL

626-650 OCEAN DRIVE

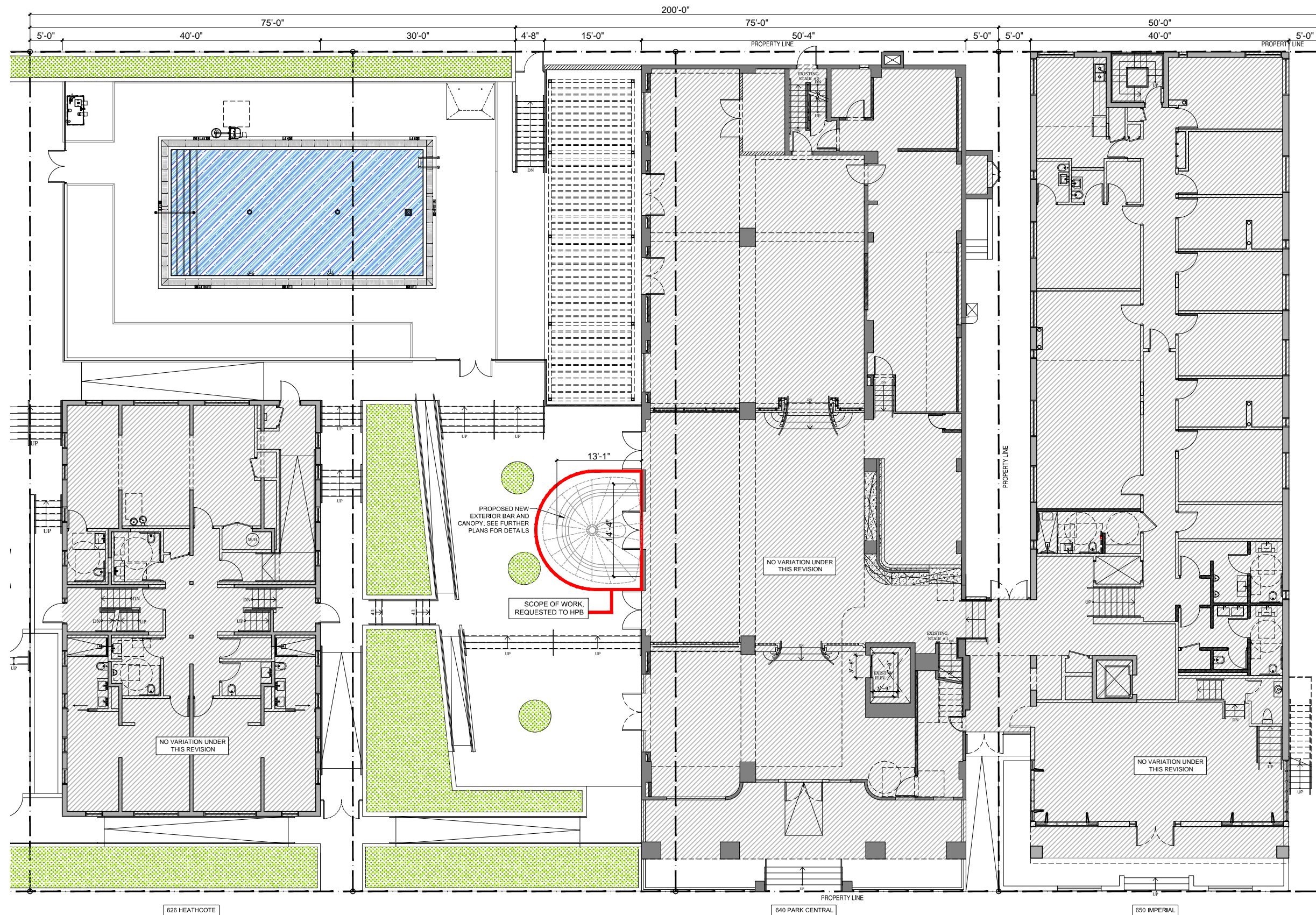
## MIAMI BEACH FLORIDA

HISTORIC PRESERVATION BOARD SUBMITTAL

MARCH 16th 2017

SCOPE OF WORK:

PROPOSED EXTERIOR BAR  
RETRACTABLE AWNINGS AT OCEAN DRIVE



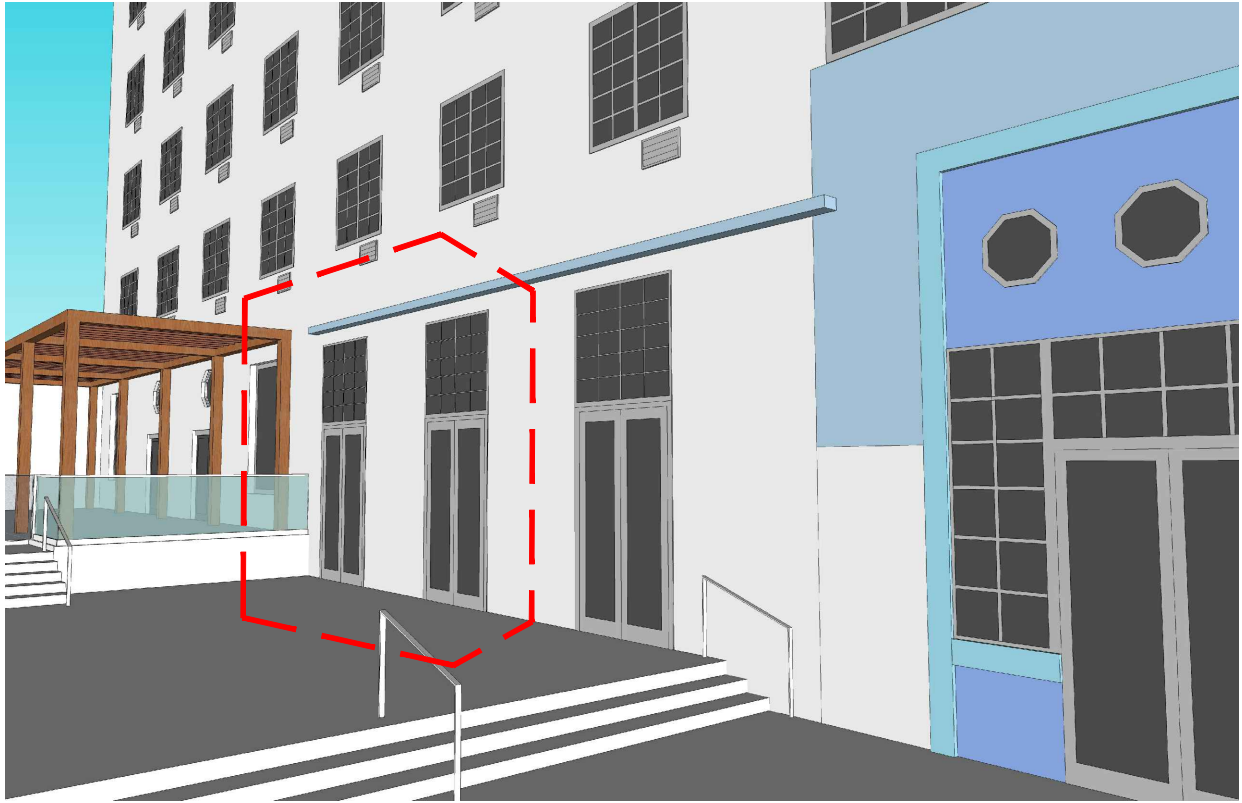
— NEW EXTERIOR BAR AND CANOPY SUBJECT TO HPB APPROVAL

PROPOSED

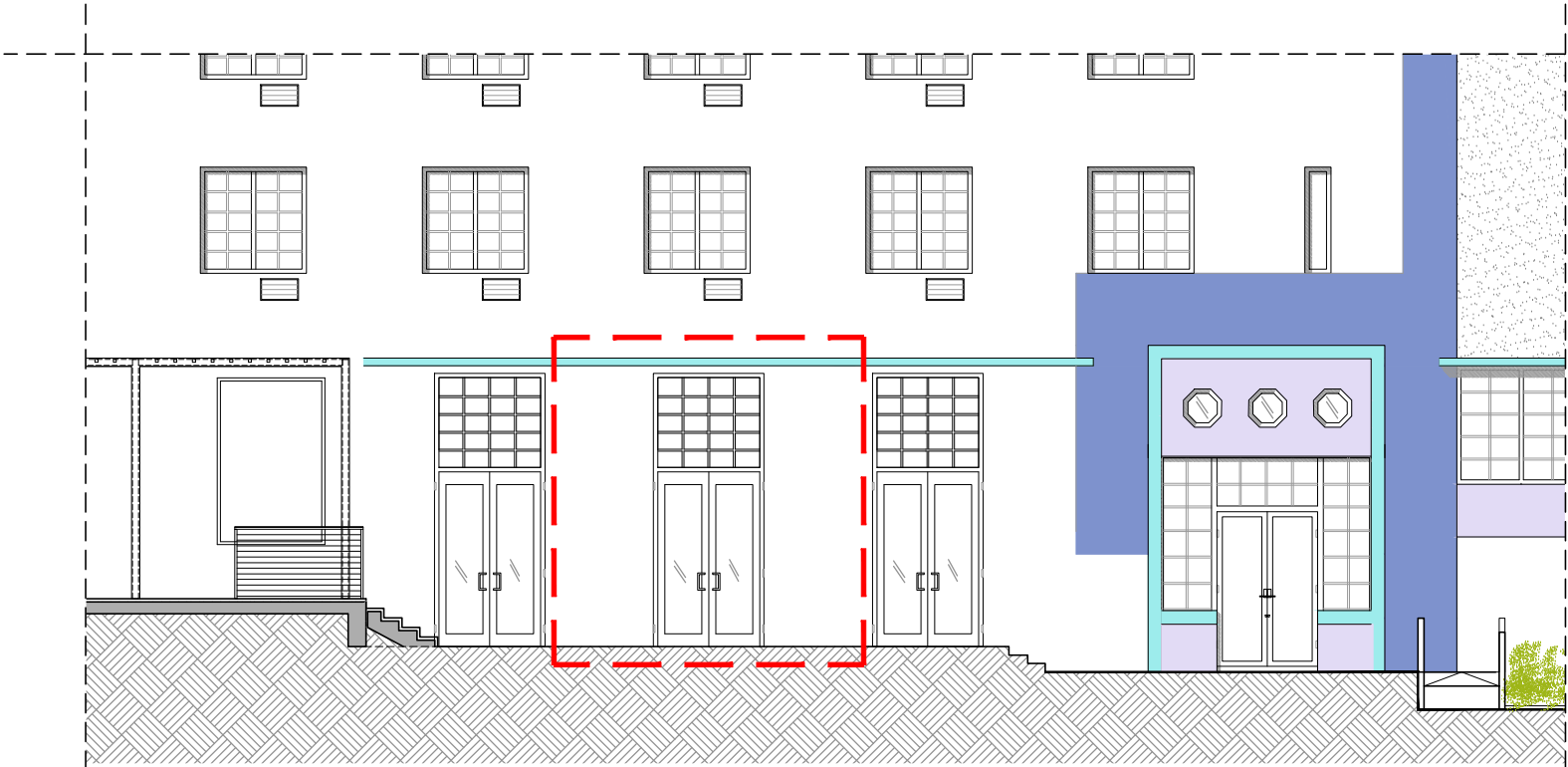


PROPOSED



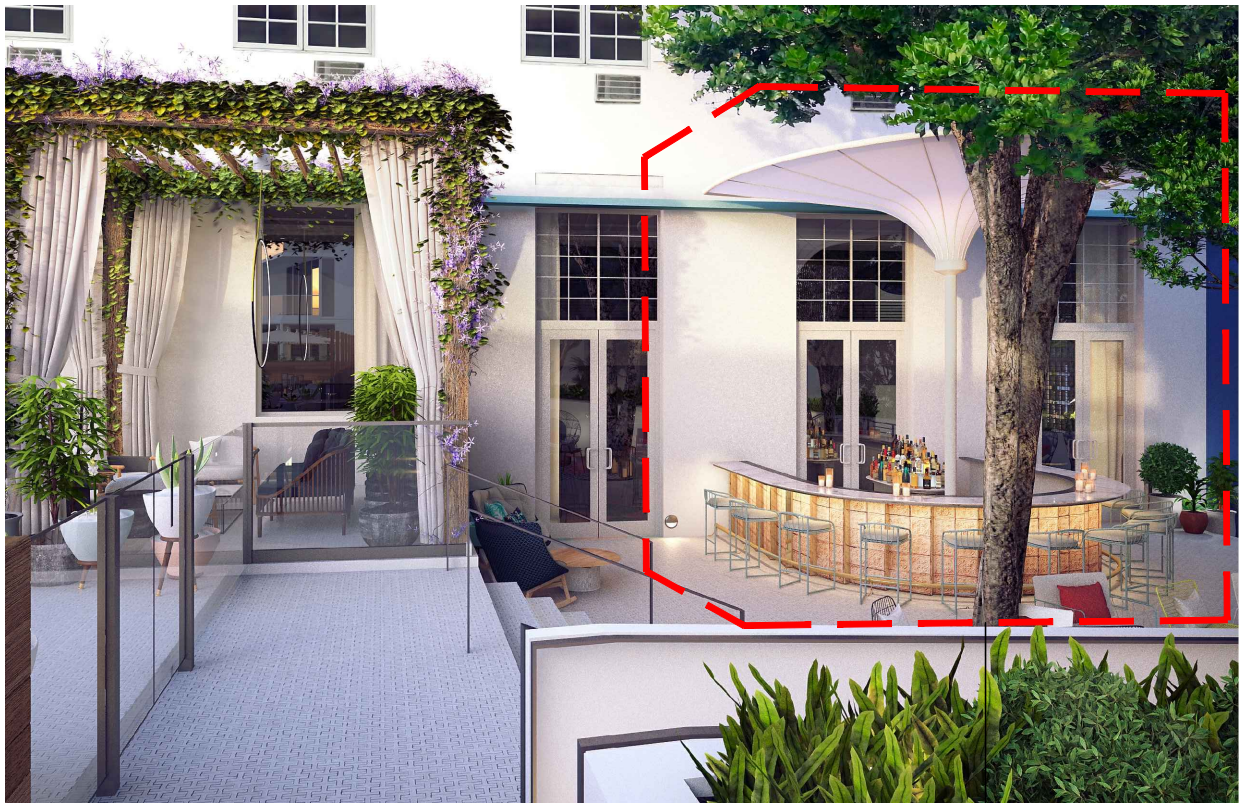


APPROVED 3D MODEL



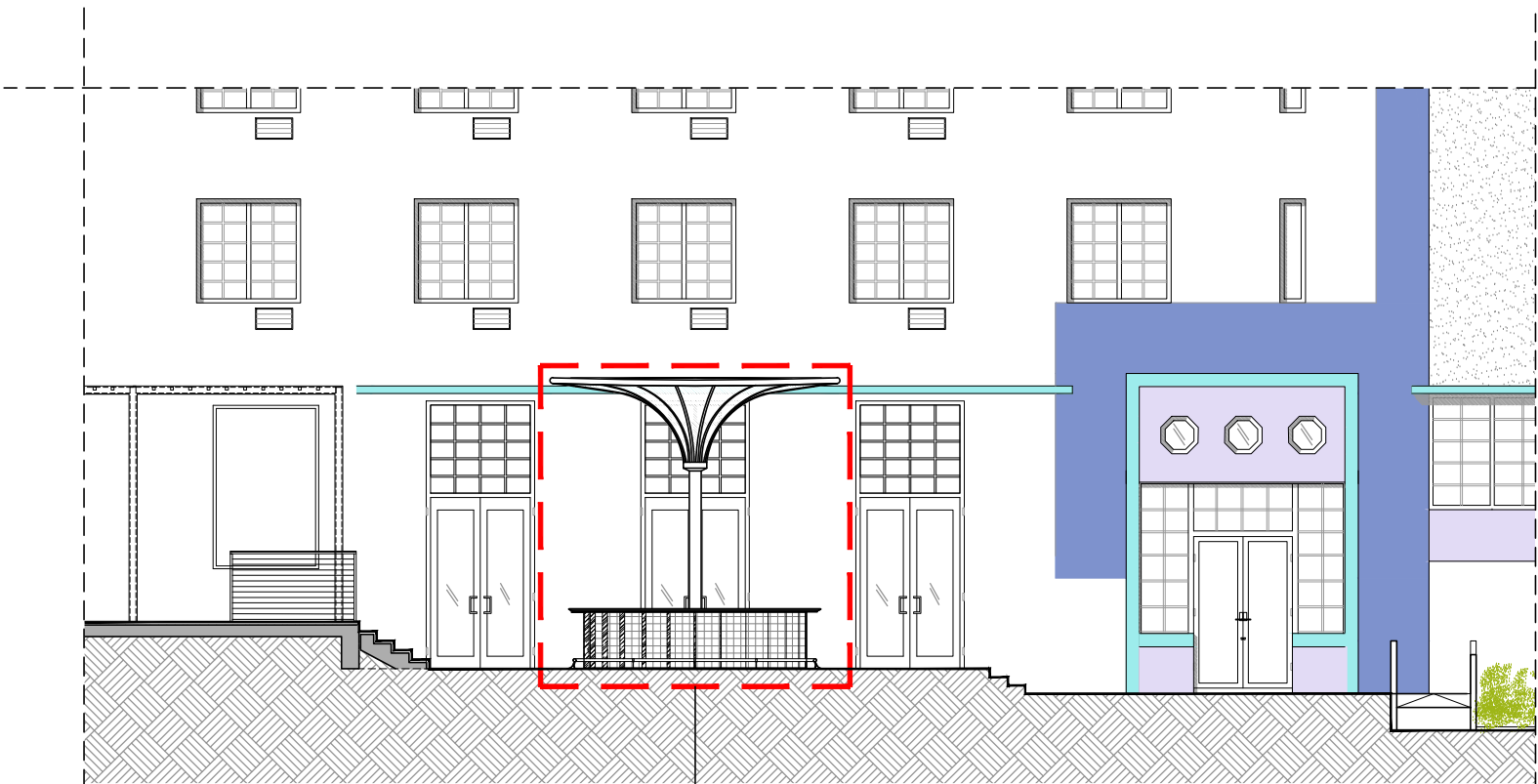
APPROVED ELEVATION

APPROVED



PROPOSED RENDERING

NEW EXTERIOR  
BAR AND CANOPY



PROPOSED ELEVATION

NEW EXTERIOR  
BAR AND CANOPY

PROPOSED





PROPOSED

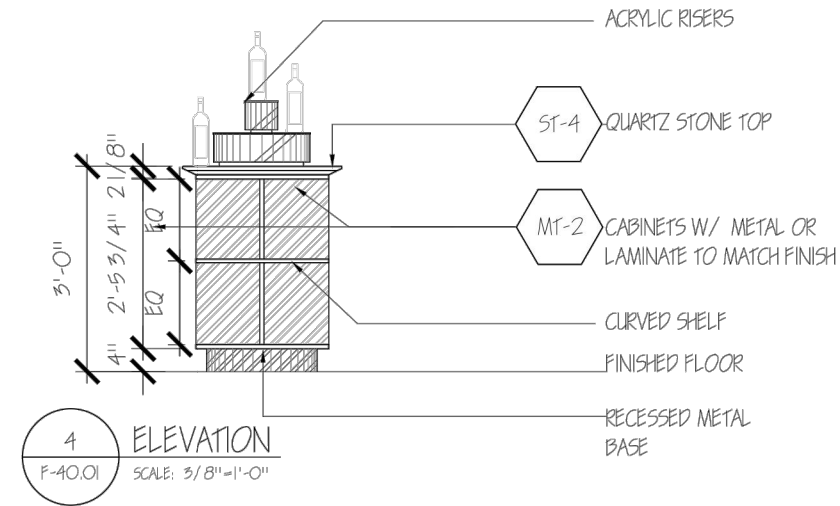
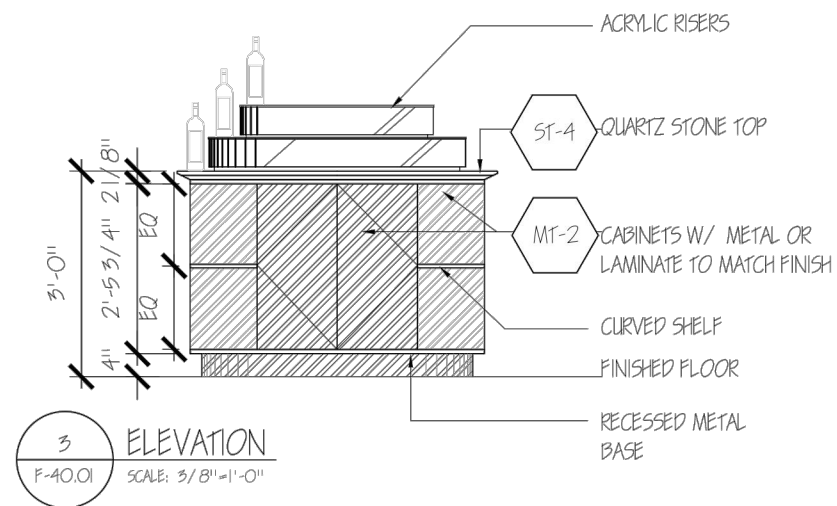
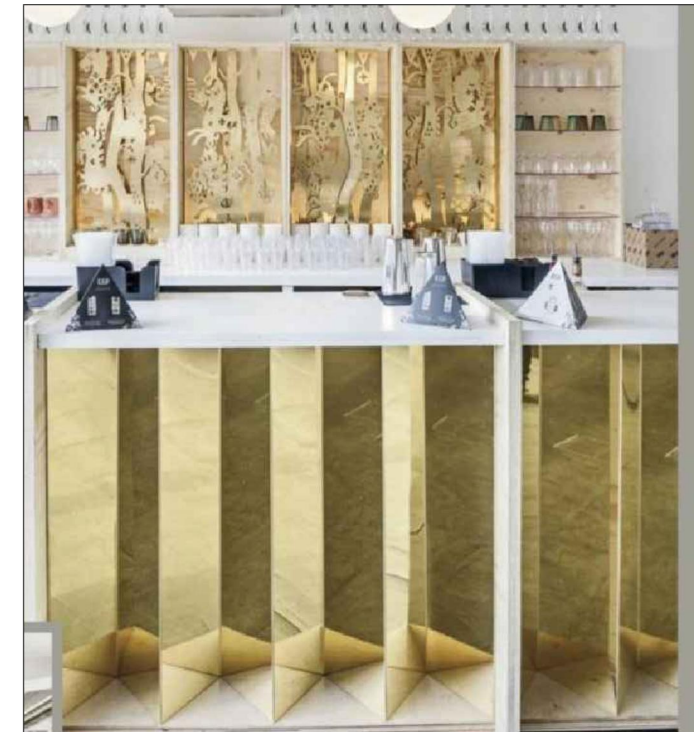
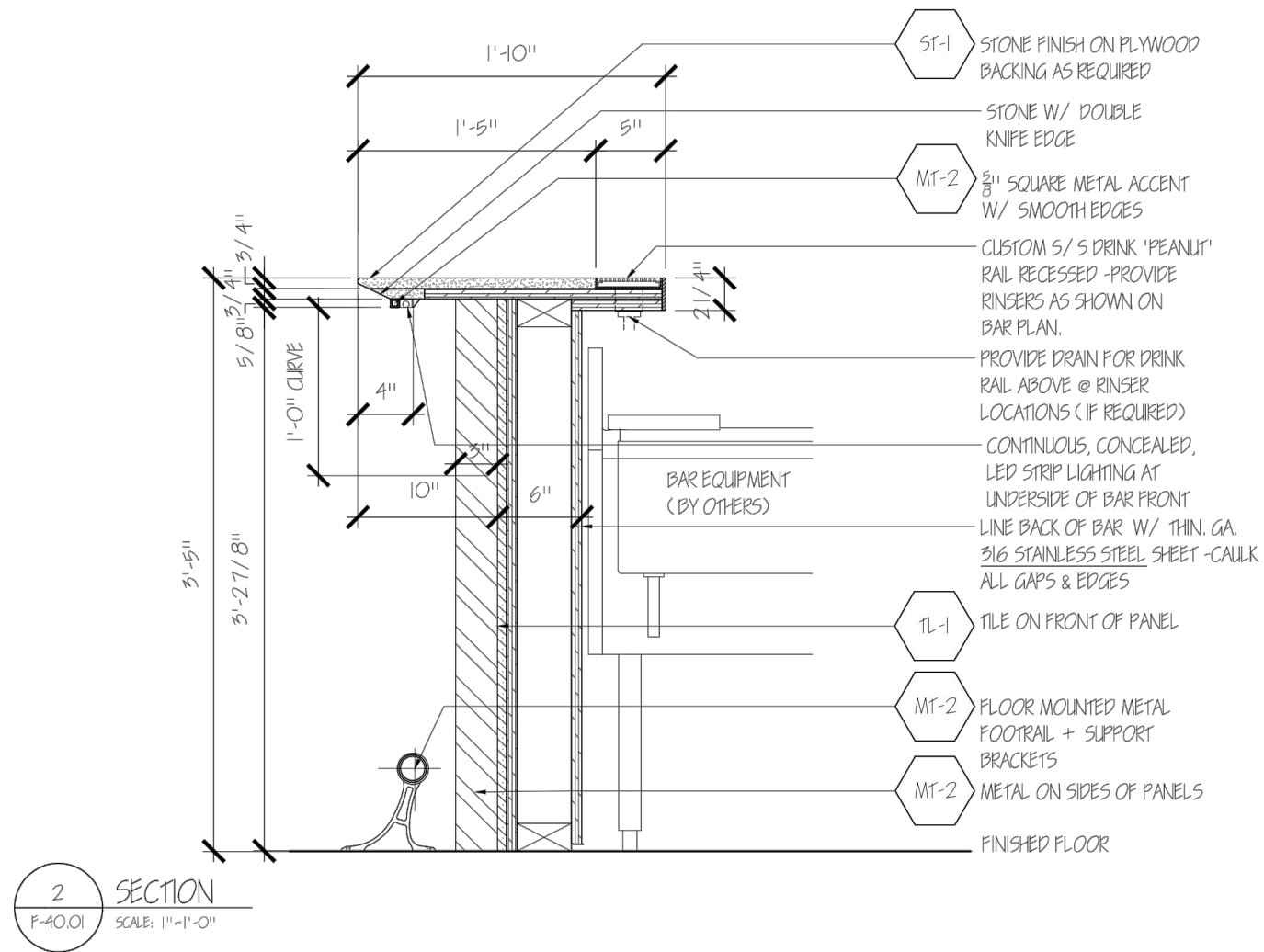




PROPOSED

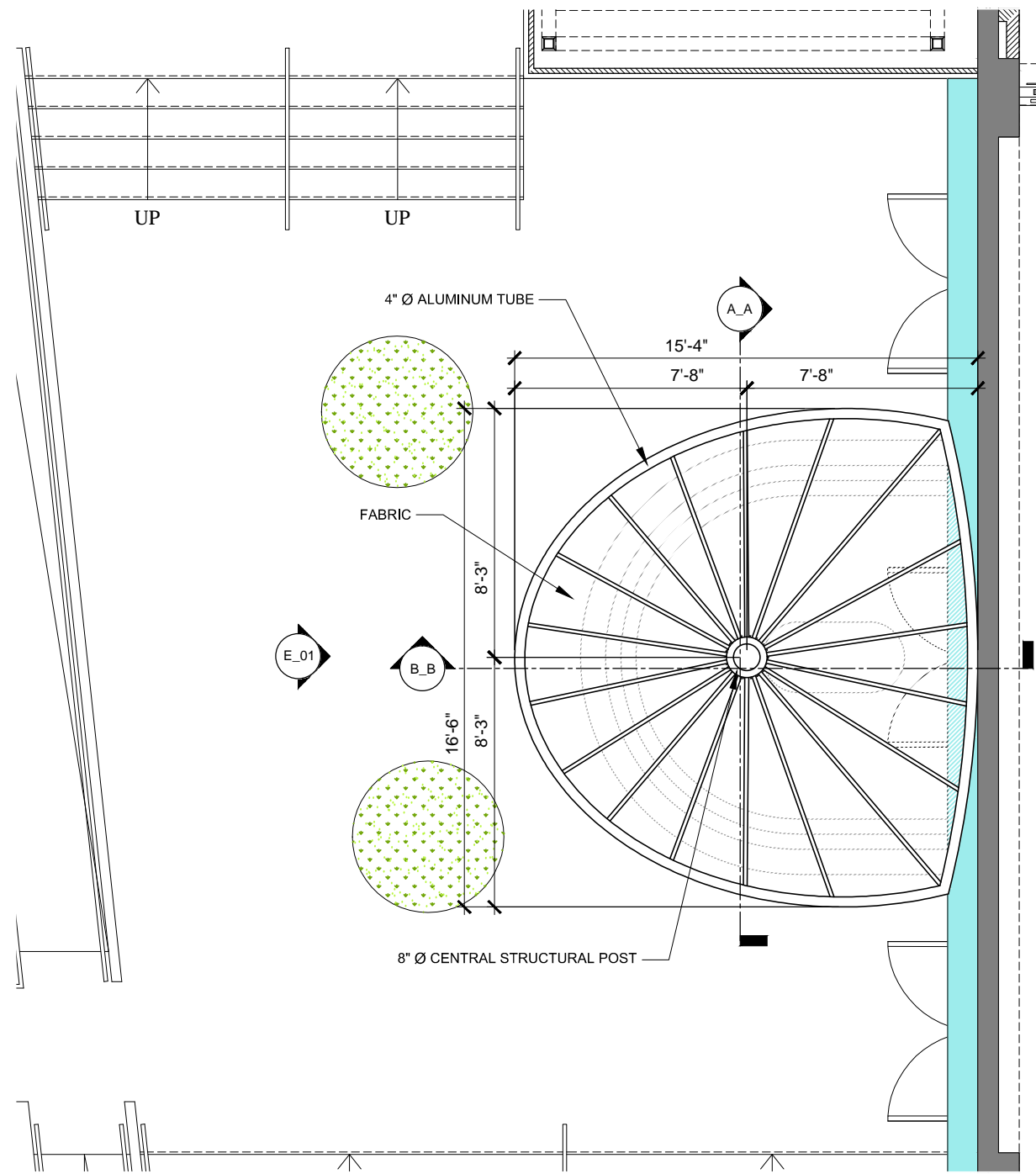




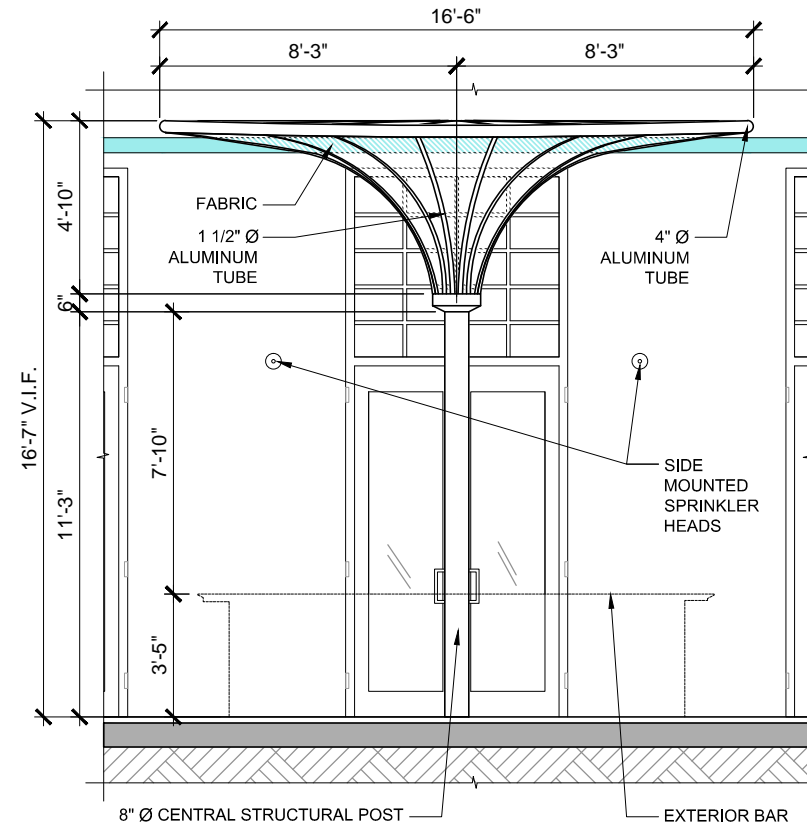


PROPOSED

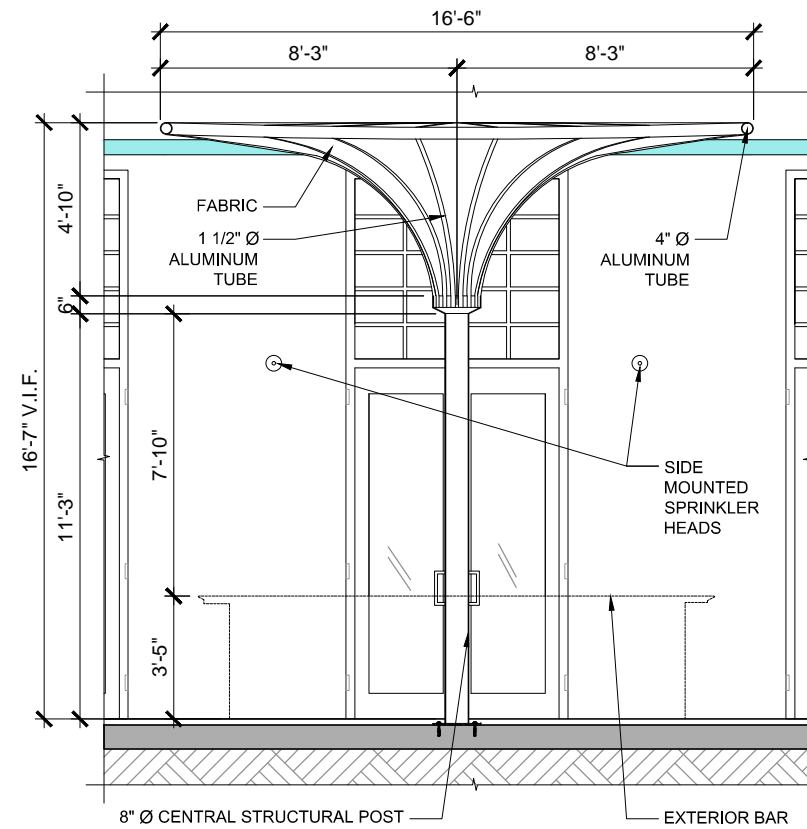




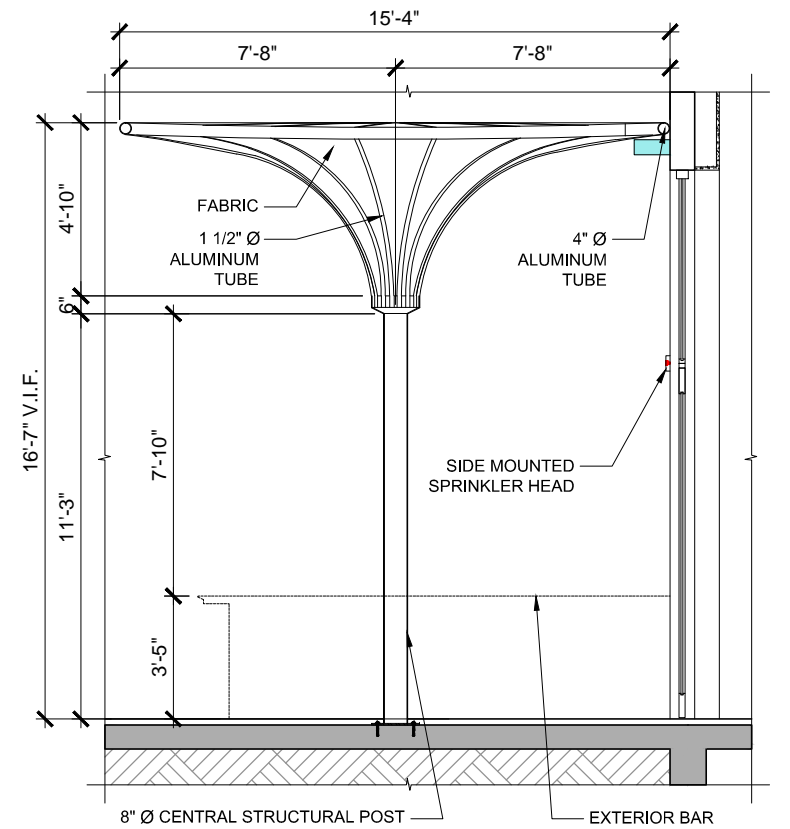
FLOOR PLAN



ELEVATION 01



SECTION A\_A

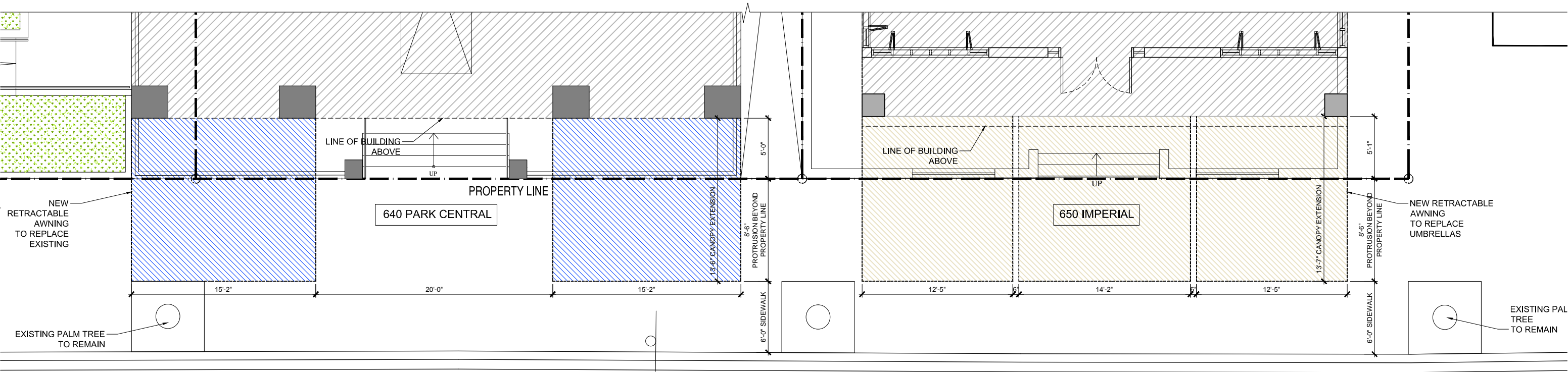


SECTION B\_B

PROPOSED



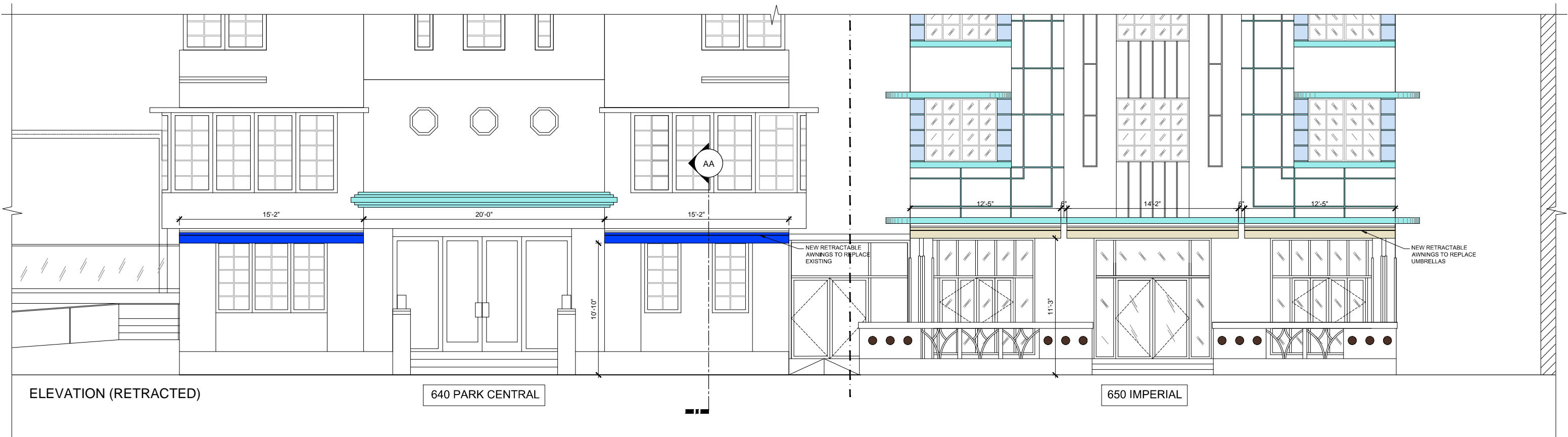
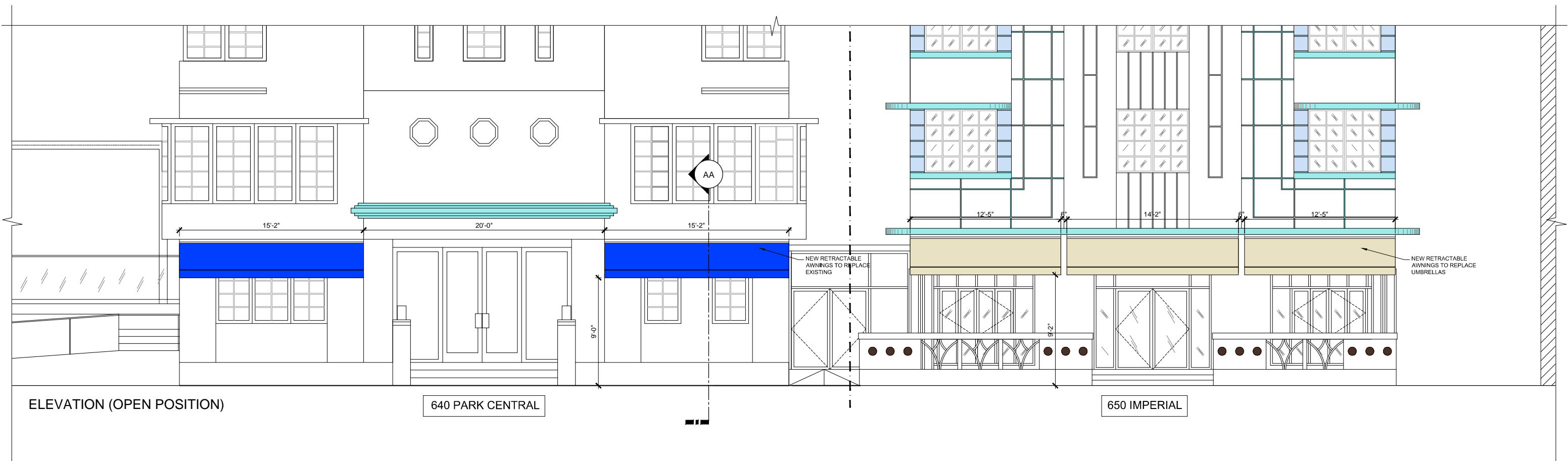




RETRACTABLE AWNINGS FLOOR PLAN (OPEN POSITION)

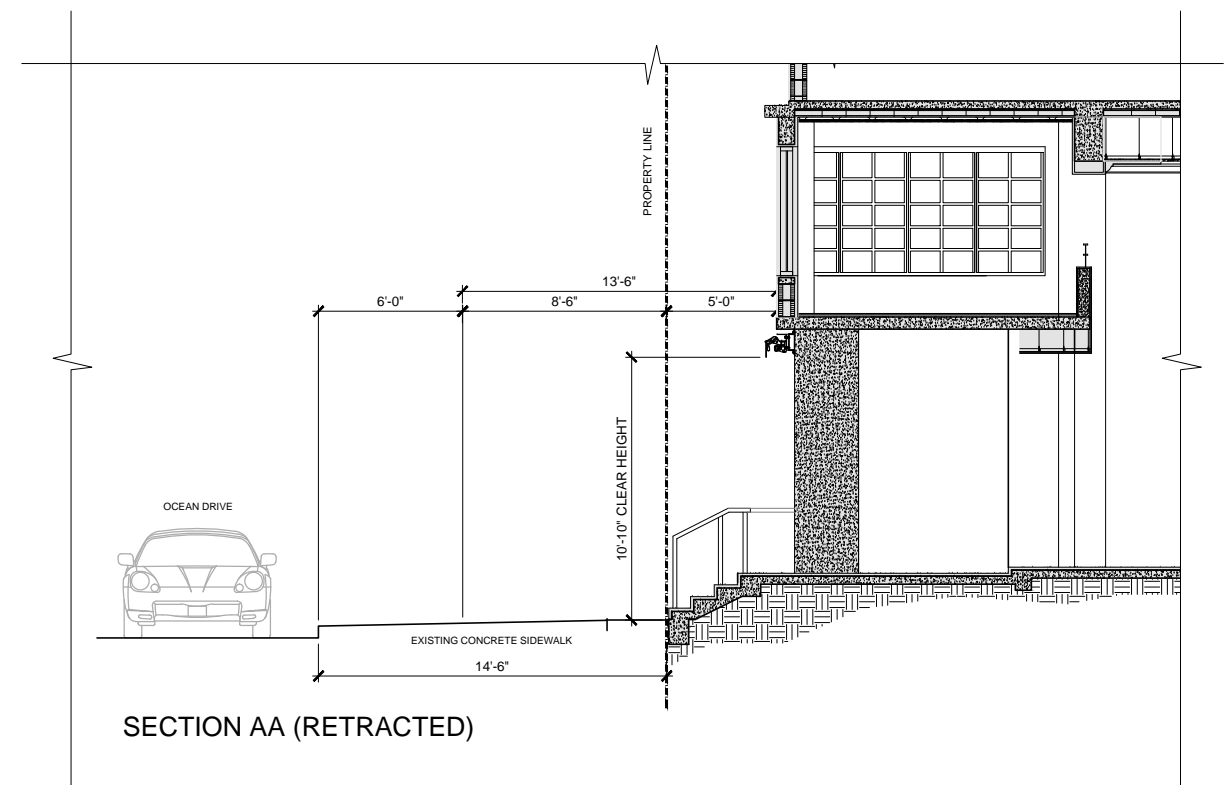
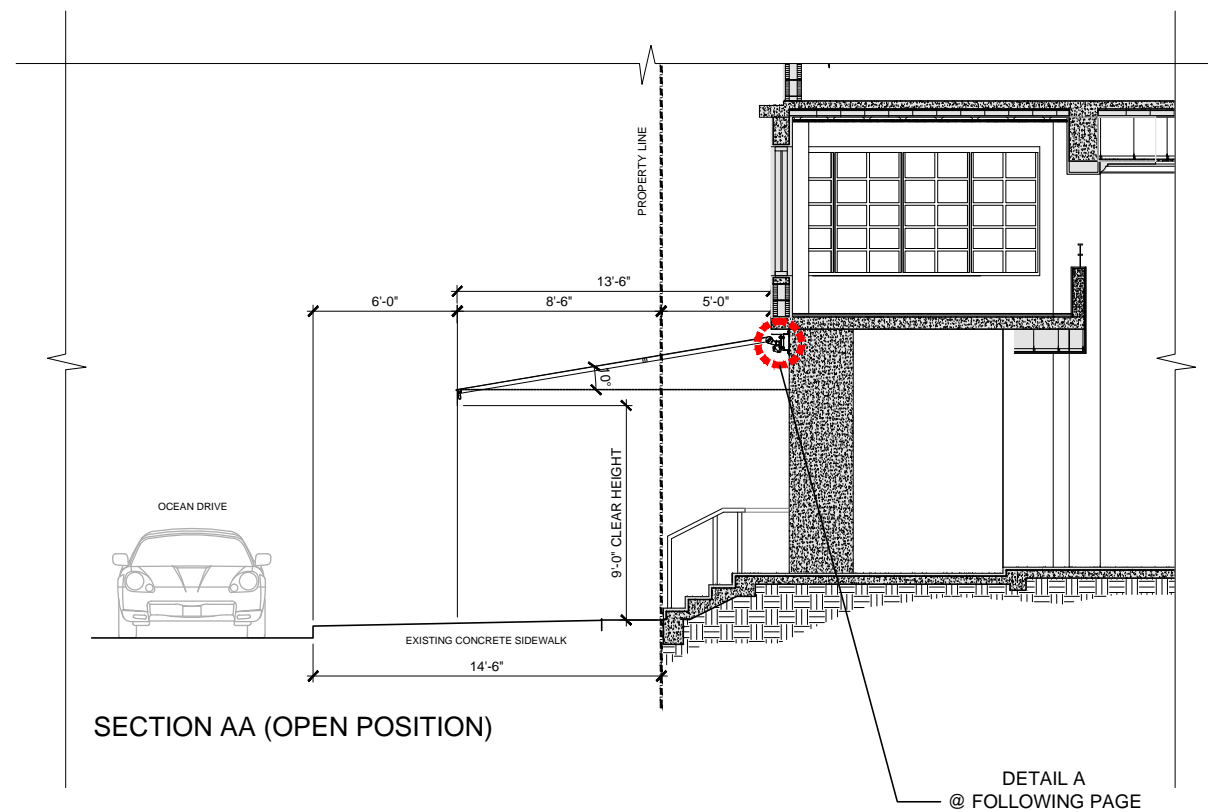


PROPOSED



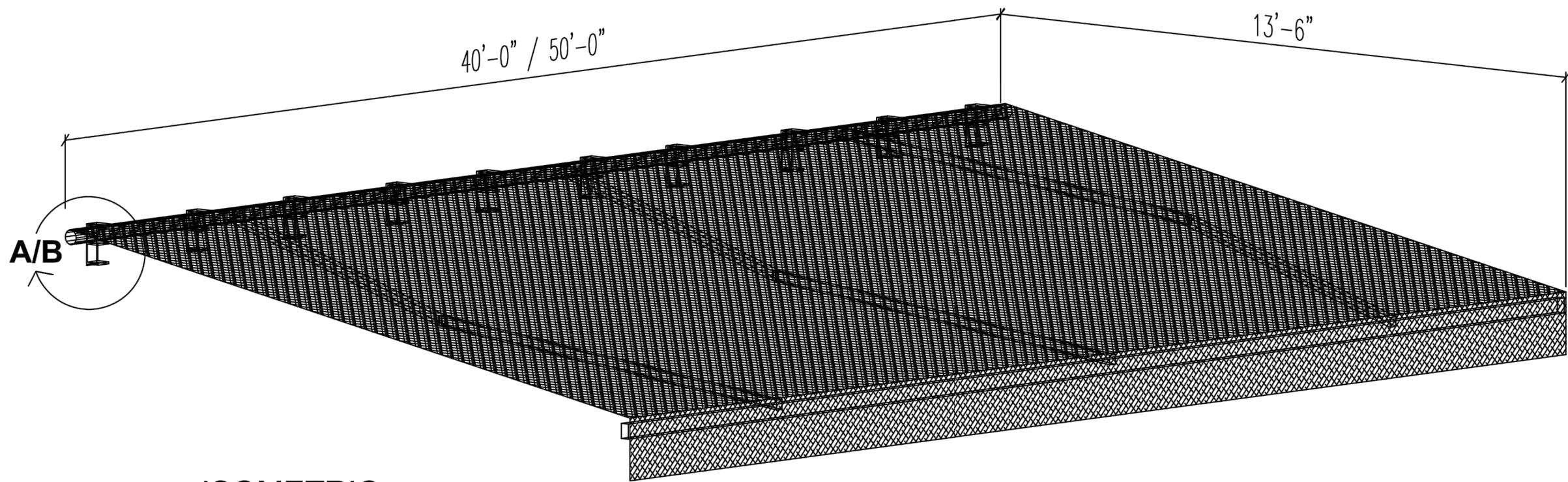
PROPOSED



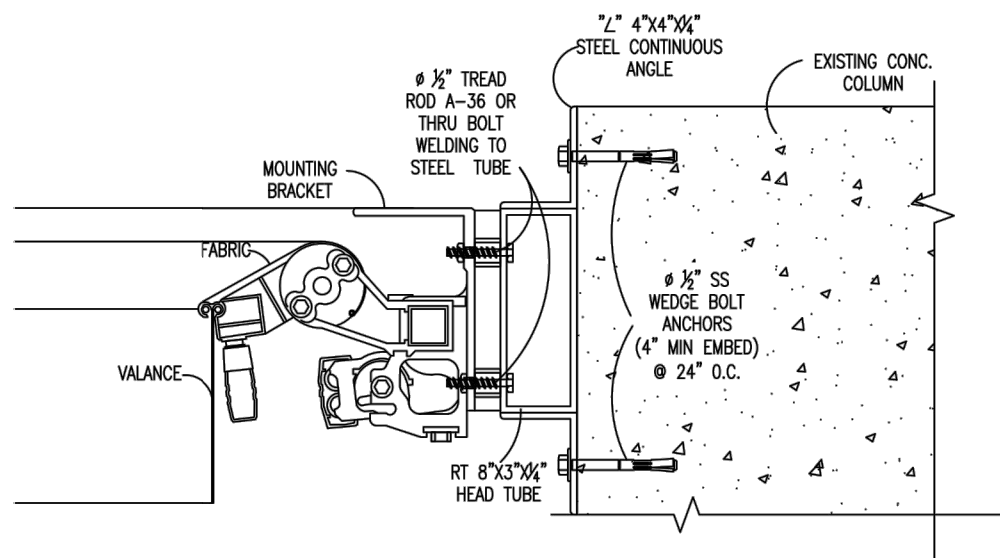


NOTE: AWNINGS' ANGLE TO BE SET UP AT TIME OF INSTALLATION AND TO REMAIN FIXED THEREAFTER.

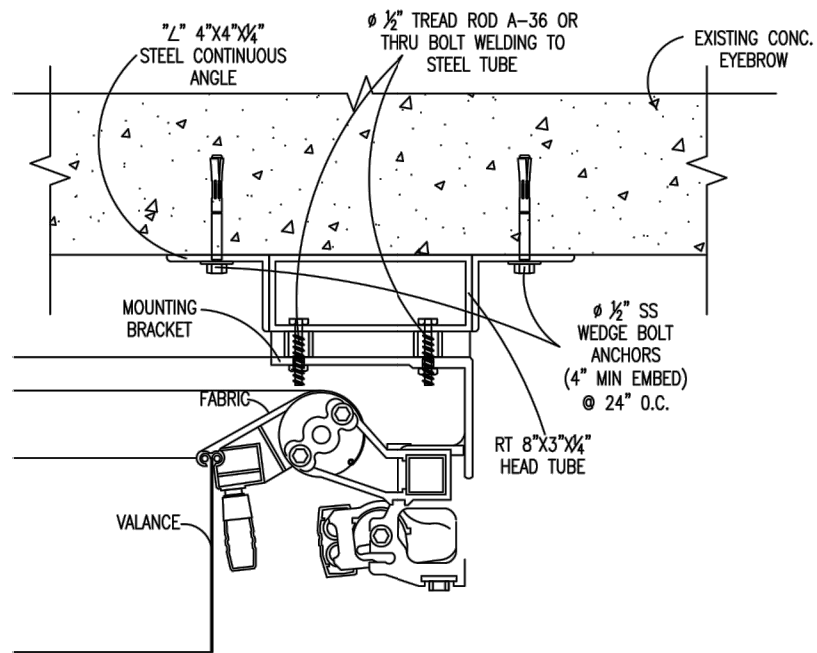
PROPOSED



## ISOMETRIC



RETRACT AWNING IN RETRACTED STORAGE POSITION  
TYPICAL DETAIL AT 640 PARK CENTRAL (DETAIL A)



RETRACT AWNING IN RETRACTED STORAGE POSITION  
TYPICAL DETAIL AT 650 IMPERIAL (DETAIL B)

### GENERAL STEEL NOTES:

1. ALL TUBES TO BE STEEL A500- GRADE B
2. ALL CONNECTIONS TO BE FULLY WELDED.
3. ALL WELDS COVERED WITH CORROSION RESISTANCE COATING
4. ALL STRUCTURES DESIGNED IN ACCORDANCE WITH 2014 FLORIDA BLDG. CODE (OR ASCE 7-10) EXPOSURE C
5. NOTIFY ENGINEER OF ANY ERRORS/ OMISSIONS OR ANY PART OF THE DRAWINGS IS NOT UNDERSTOOD.
6. ALL ANCHOR BOLTS TO BE WEDGE BOLT ANCHOR BY POWERS OR EQUAL.
- 7.- BRACKET TO STEEL PIPE TO BE ATTACHED WITH S.S HOLLO BOLTS BY LINDAPTER OR EQUAL.

### ALUMINUM BRACKETS GENERAL NOTES:

1. BRACKETS TO BE ALUMINUM 6061 -T6 ALUMINUM ELEMENTS BY MANUFACTURER
2. ALL STRUCTURES DESIGNED IN ACCORDANCE WITH 2014 FLORIDA BLDG. CODE (OR ASCE 7-10) EXPOSURE C
3. NOTIFY ENGINEER OF ANY ERRORS/ OMISSIONS OR ANY PART OF THE DRAWINGS IS NOT UNDERSTOOD.
4. AWNING TOP TO BE RETRACTED AT 30 MPH WIND SPEED.
5. -ALUMINUM SURFACES IN CONTACT WITH CONCRETE OR MANSORY MATERIALS SHALL BE PROTECTED WITH BITUMINOUS PAINT.

**PROPOSED**





FRONT VIEW FROM OCEAN DRIVE



PERSPECTIVE FROM SOUTH-EAST

PROPOSED





PERSPECTIVE FROM SIDEWALK (OPEN POSITION)

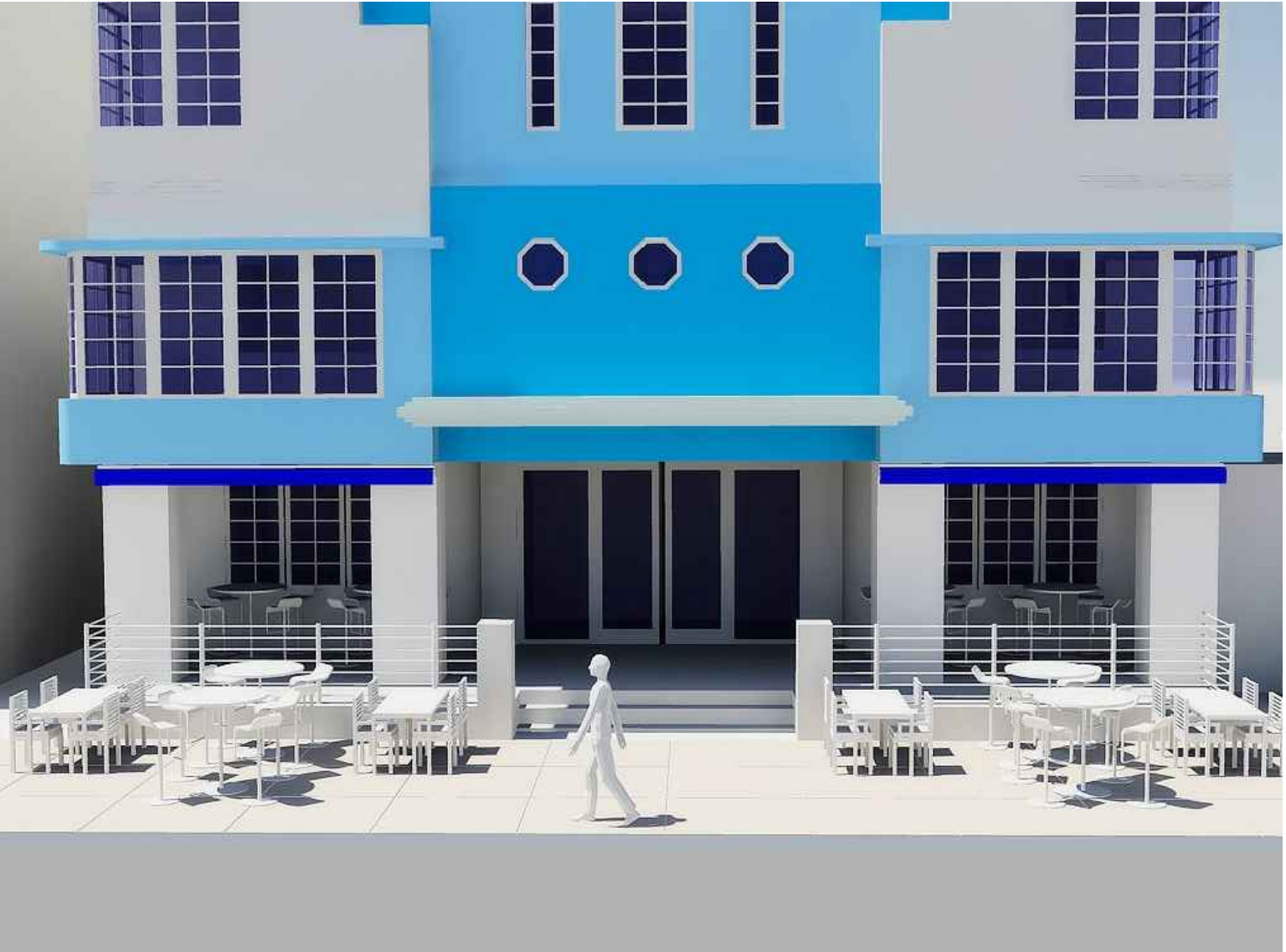


PERSPECTIVE FROM SIDEWALK (RETRACTED POSITION)

PROPOSED



PARK CENTRAL HOTEL (OPEN POSITION)



PARK CENTRAL HOTEL (RETRACTED POSITION)

PROPOSED





IMPERIAL HOTEL (OPEN POSITION)



IMPERIAL HOTEL (RETRACTED POSITION)

PROPOSED