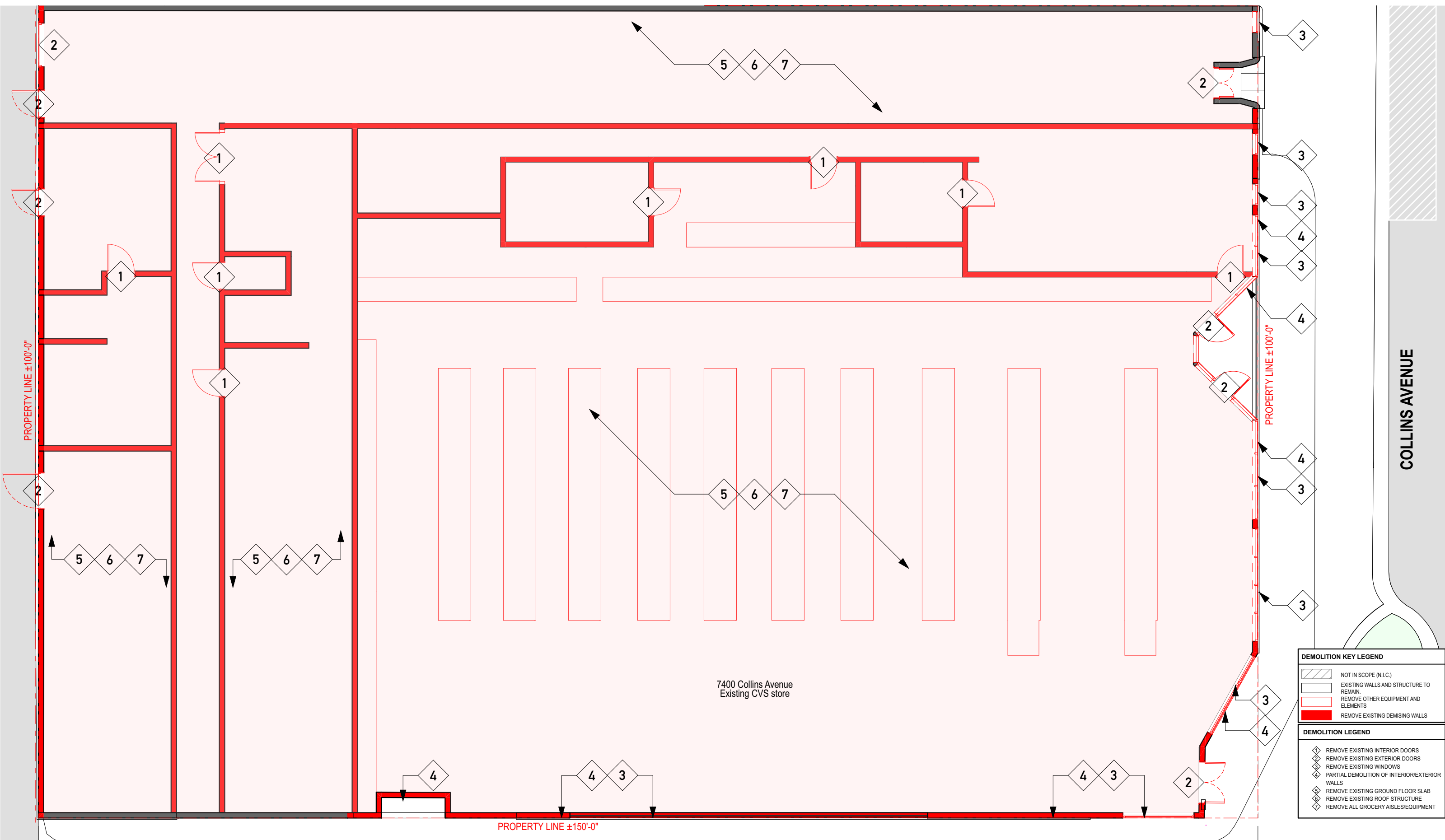


A-16

7401-7425 HARDING AVENUE

COLLINS FINAL HPB SUBMITTAL  
 URBAN ROBOT © 2024  
 AR#99232 Sebastian Velez





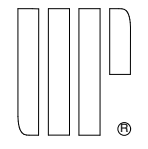
DEMOLITION KEY LEGEND	
	NOT IN SCOPE (N.I.C.)
	EXISTING WALLS AND STRUCTURE TO REMAIN
	REMOVE OTHER EQUIPMENT AND ELEMENTS
	REMOVE EXISTING DEMISING WALLS

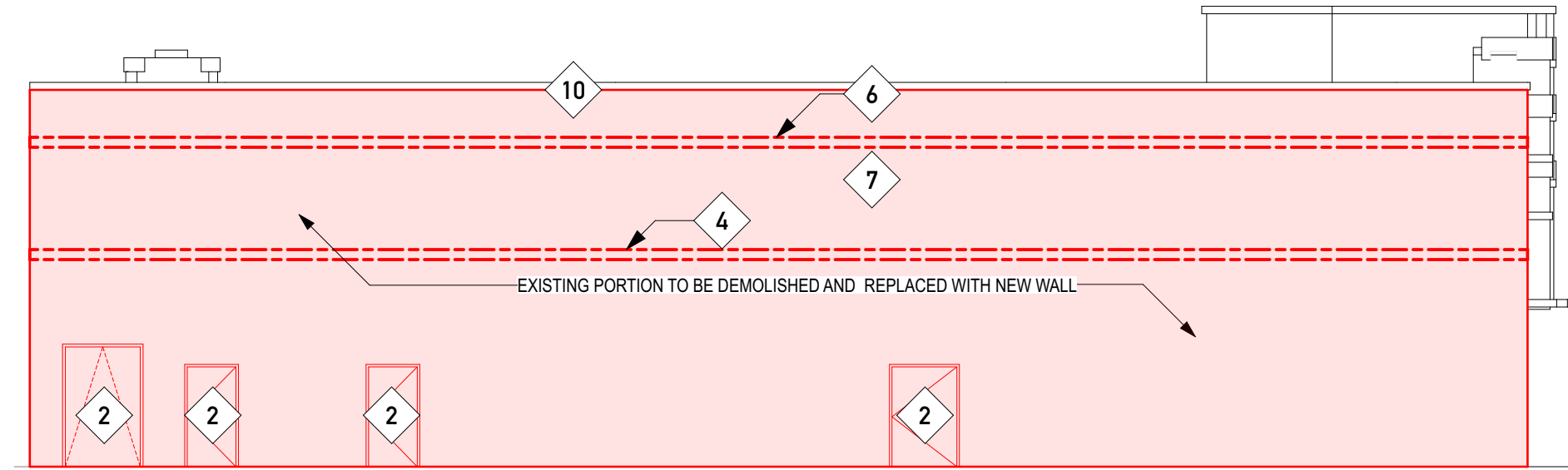
  

DEMOLITION LEGEND	
	REMOVE EXISTING INTERIOR DOORS
	REMOVE EXISTING EXTERIOR DOORS
	REMOVE EXISTING WINDOWS
	PARTIAL DEMOLITION OF INTERIOR/EXTERIOR WALLS
	REMOVE EXISTING GROUND FLOOR SLAB
	REMOVE EXISTING ROOF STRUCTURE
	REMOVE ALL GROCERY AISLES/EQUIPMENT

A-17

7410 COLLINS AVENUE



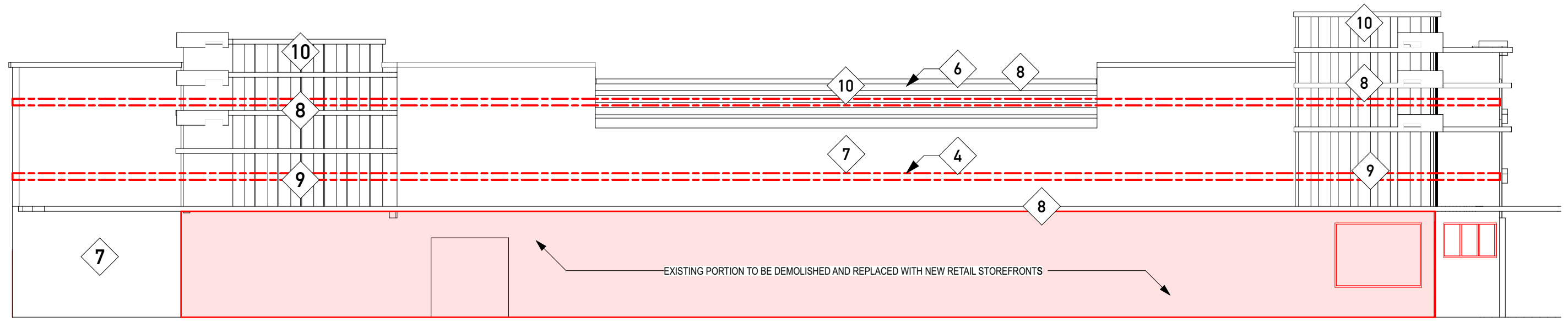
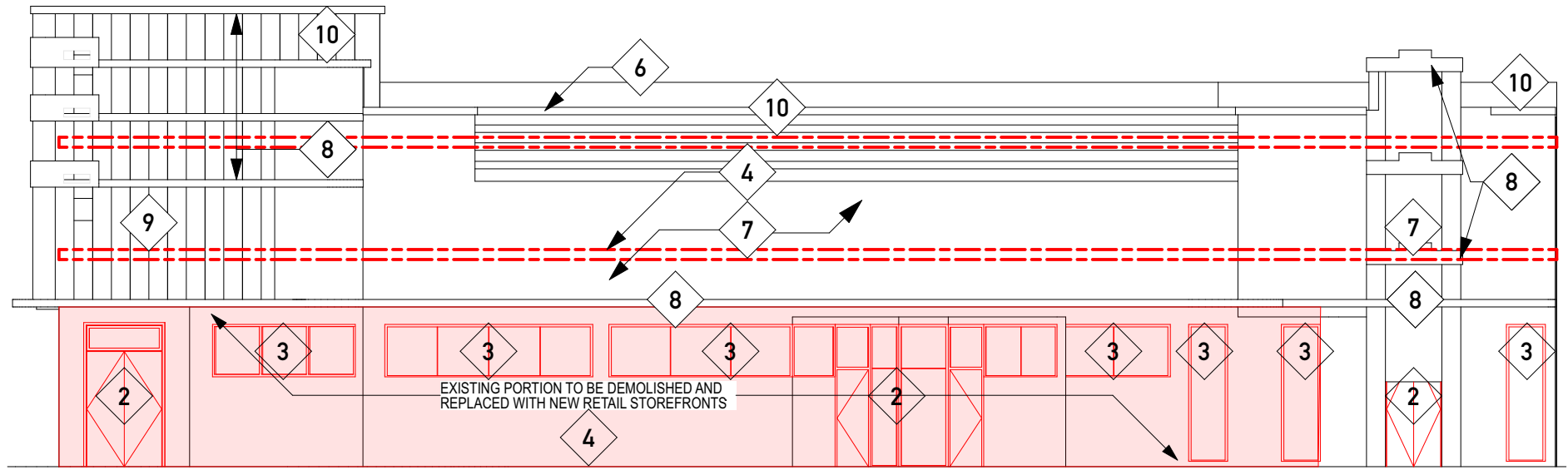


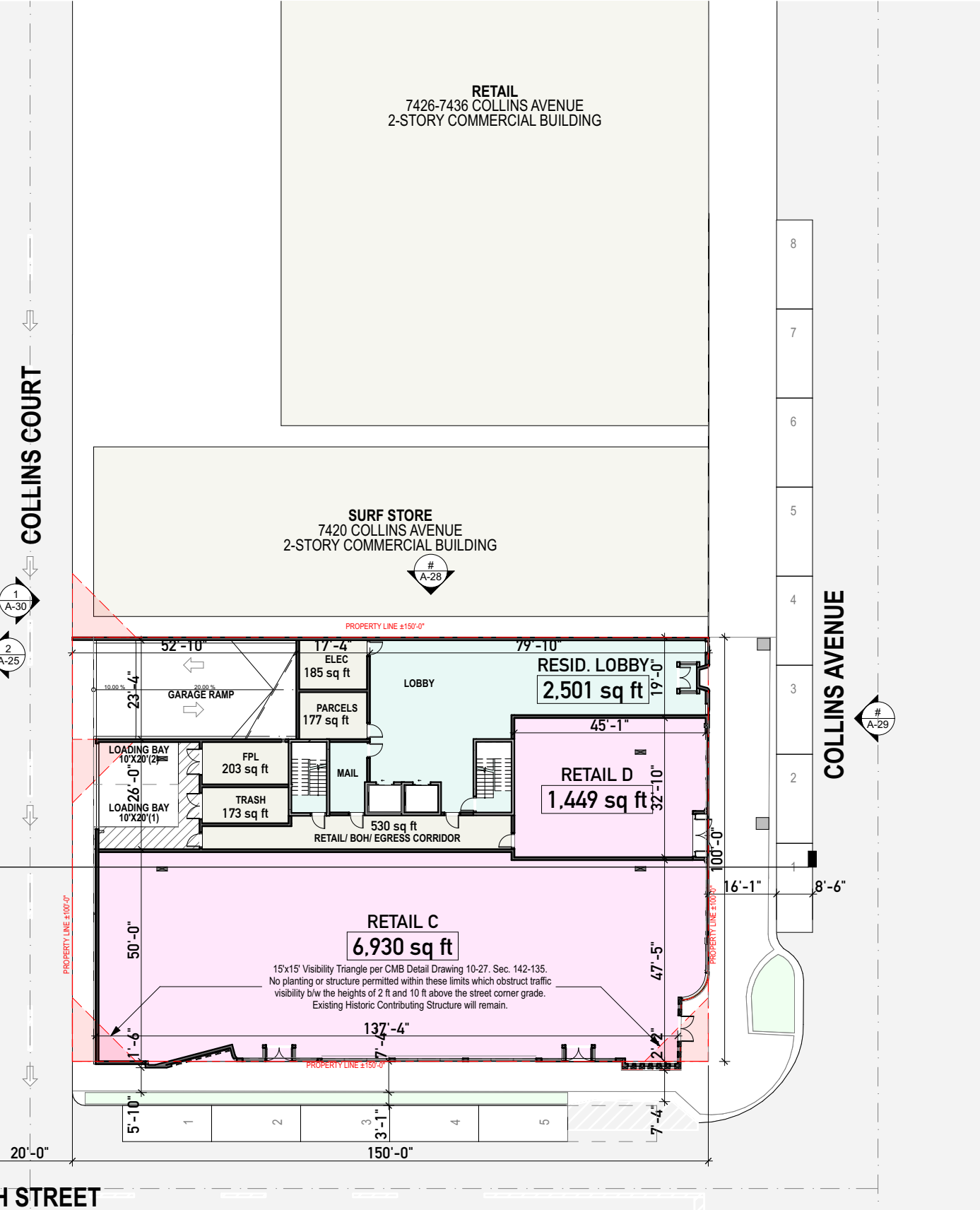
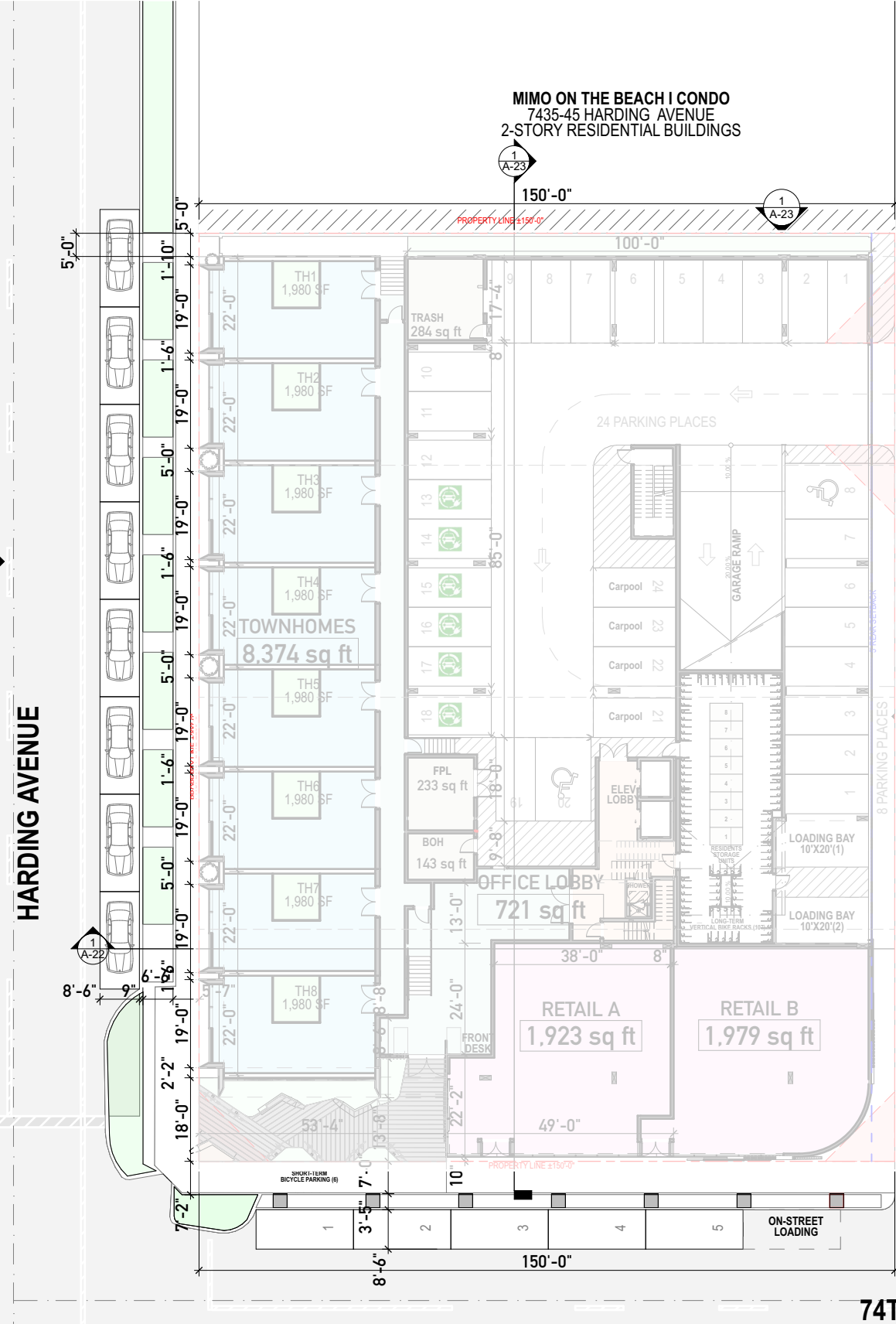
DEMOLITION KEY LEGEND	
	NOT IN SCOPE (N.I.C.)
	EXISTING WALLS AND STRUCTURE TO REMAIN
	REMOVE OTHER EQUIPMENT AND ELEMENTS
	REMOVE WALLS

DEMOLITION LEGEND	
	REMOVE EXISTING INTERIOR DOORS
	REMOVE EXISTING EXTERIOR DOORS
	REMOVE EXISTING WINDOWS
	PARTIAL DEMOLITION OF EXTERIOR WALLS
	REMOVE EXISTING GROUND FLOOR SLAB
	REMOVE EXISTING ROOF STRUCTURE
	REPLACE EXIST. EXTERIOR FINISHES
	REPAIR EXIST. ARCH. EYEBROWS
	REPAIR EXIST. ARCH. LOUVERS
	REPAIR EXIST. PARAPET WALL

**NOTE:**  
ALL GLAZING TO BE REMOVED AND REPLACED WITH NEW HURRICANE PROOF GLAZING.

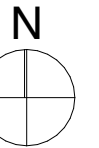




1/32" = 1'-0"

GROUND LEVEL

1



A-19

7410 COLLINS AVENUE

COLLINS FINAL HPB SUBMITTAL  
URBAN ROBOT © 2024  
AR#99232 Sebastian Velez

OVERALL GROUND FLOOR 5/6/24



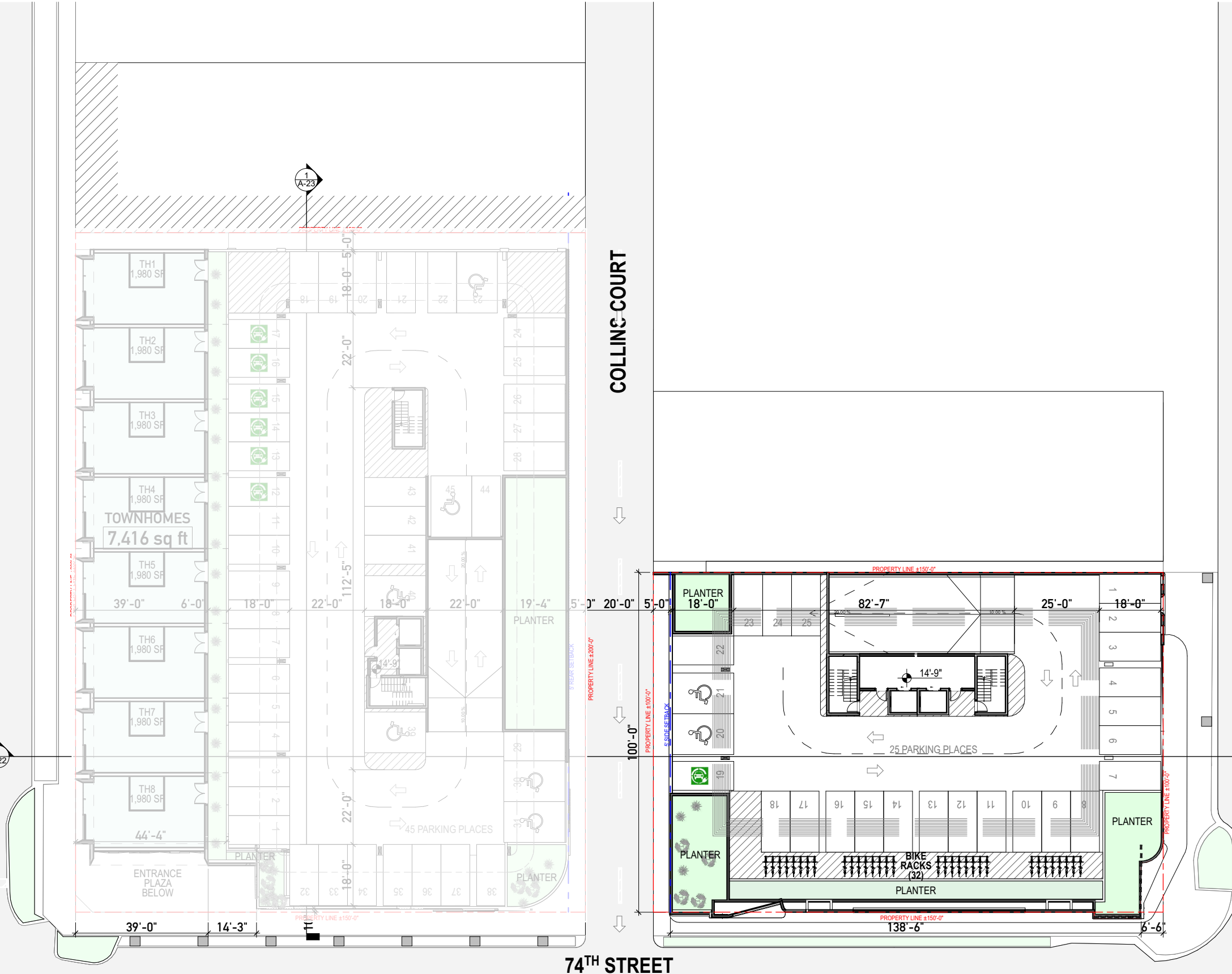


HARDING AVENUE

COLLINS COURT

COLLINS AVENUE

1  
A-22

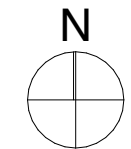


74<sup>TH</sup> STREET

1/32" = 1'-0"

SECOND LEVEL

1



A-20

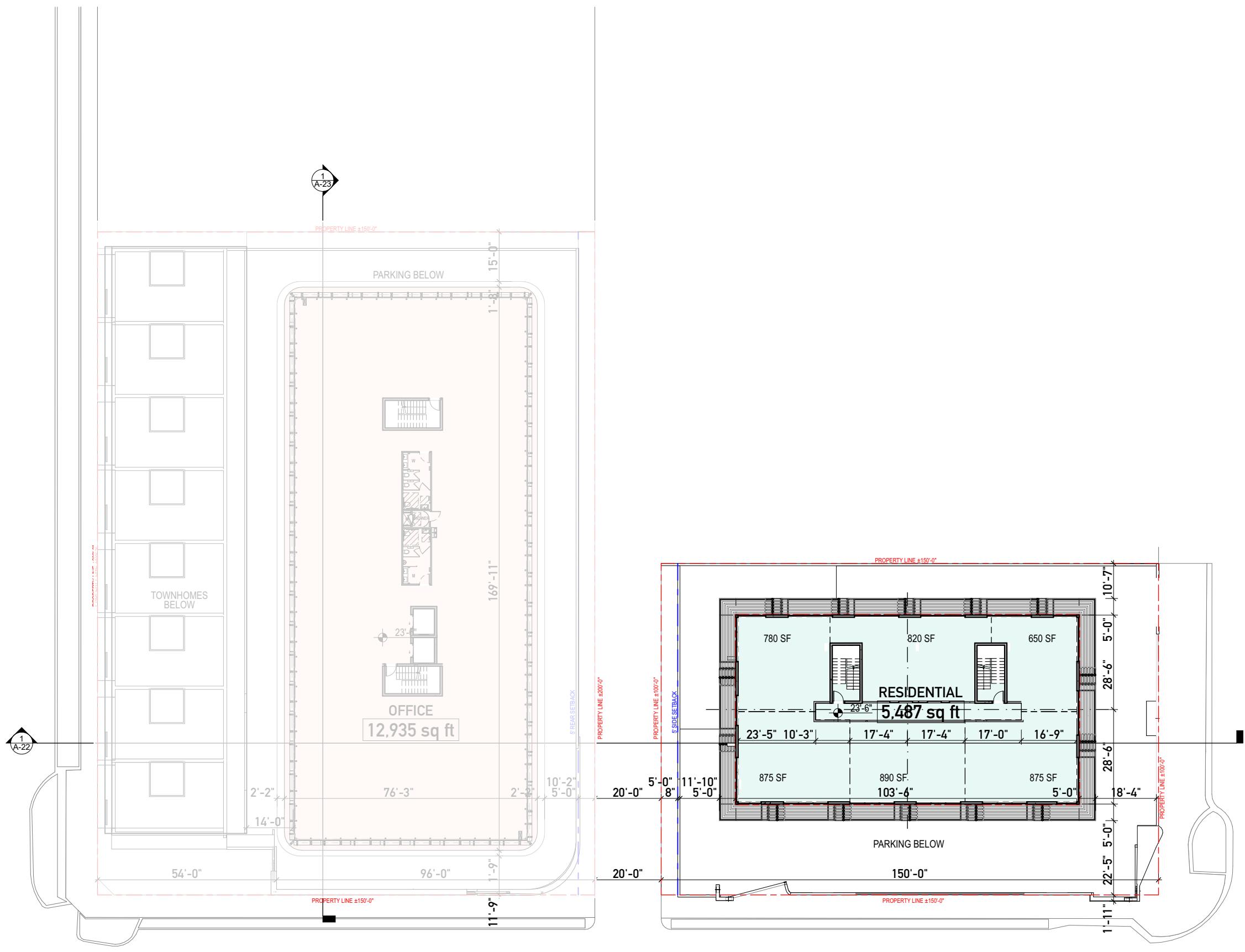
7410 COLLINS AVENUE

COLLINS FINAL HPB SUBMITTAL  
URBAN ROBOT © 2024  
AR#99232 Sebastian Velez

OVERALL SECOND FLOOR - PARKING

5/6/24

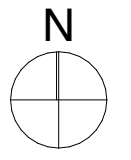




1/32" = 1'-0"

THIRD LEVEL

1



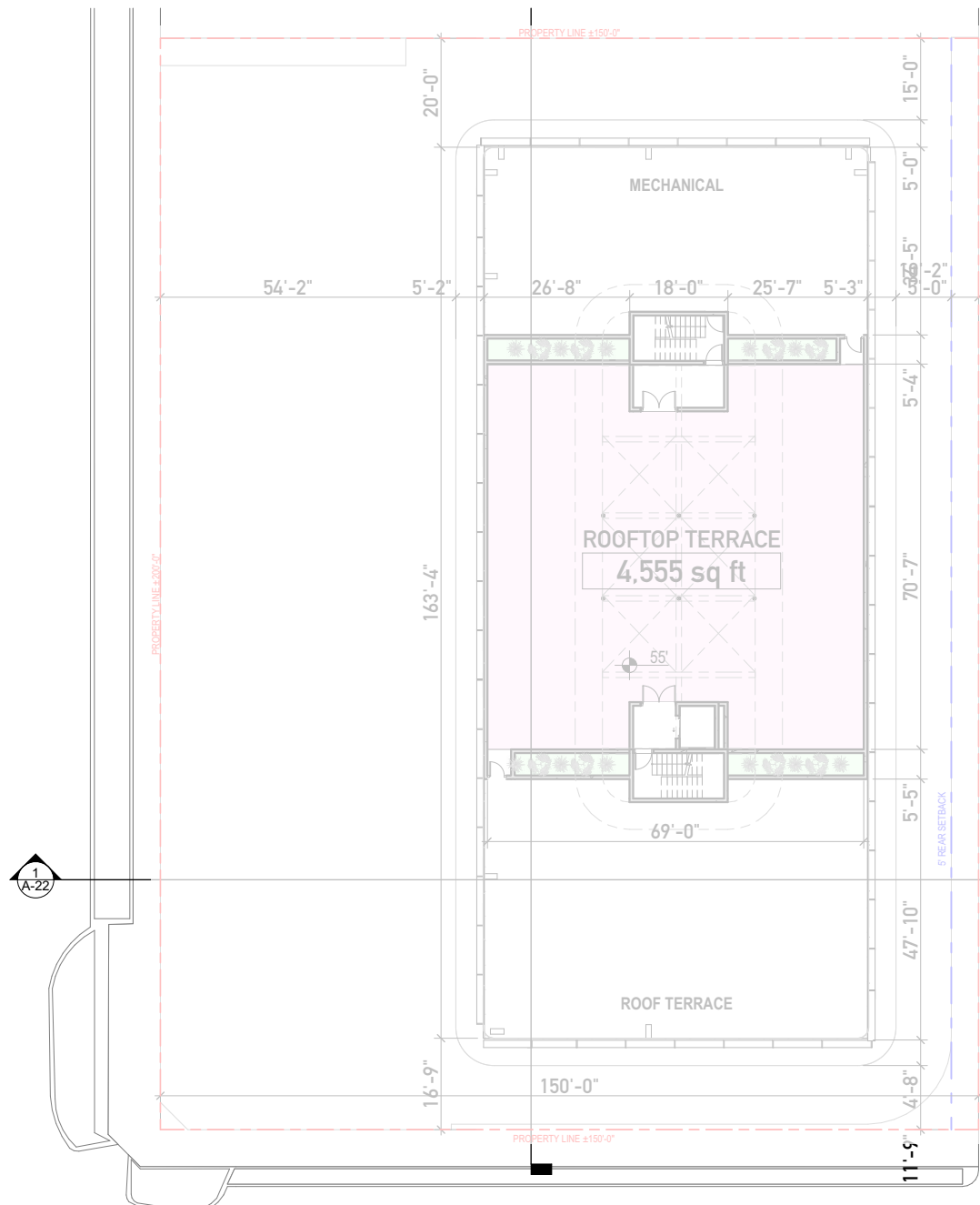
A-21

OVERALL THIRD - FIFTH FLOOR 5/6/24

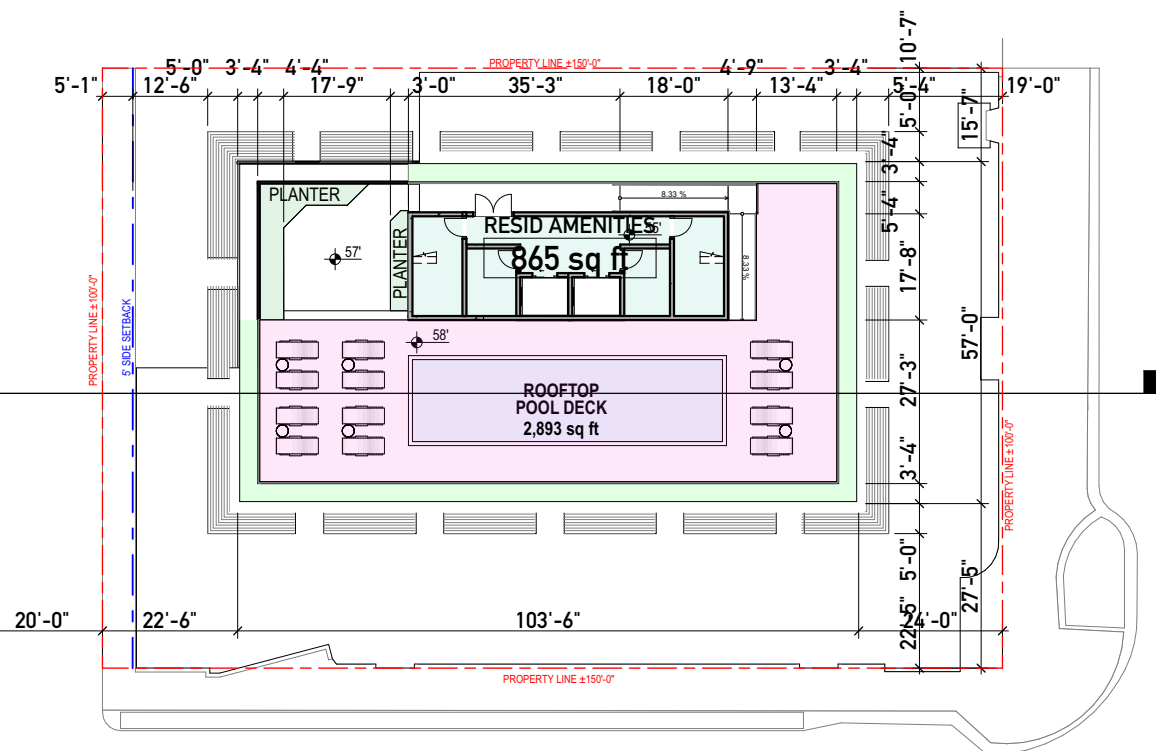
7410 COLLINS AVENUE

COLLINS FINAL HPB SUBMITTAL  
URBAN ROBOT © 2024  
AR#99232 Sebastian Velez





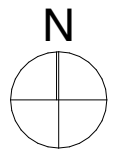
ROOF DECK CALCULATIONS	
ENCLOSED FLOOR AREA BELOW (FIFTH FLOOR)	6,000 SQ FT
50% OF ENCLOSED FLOOR AREA BELOW (FIFTH FLOOR)	3,000 SQ FT
<b>TOTAL COMBINED ROOF DECK AREA</b>	<b>2,893 SQ FT</b>

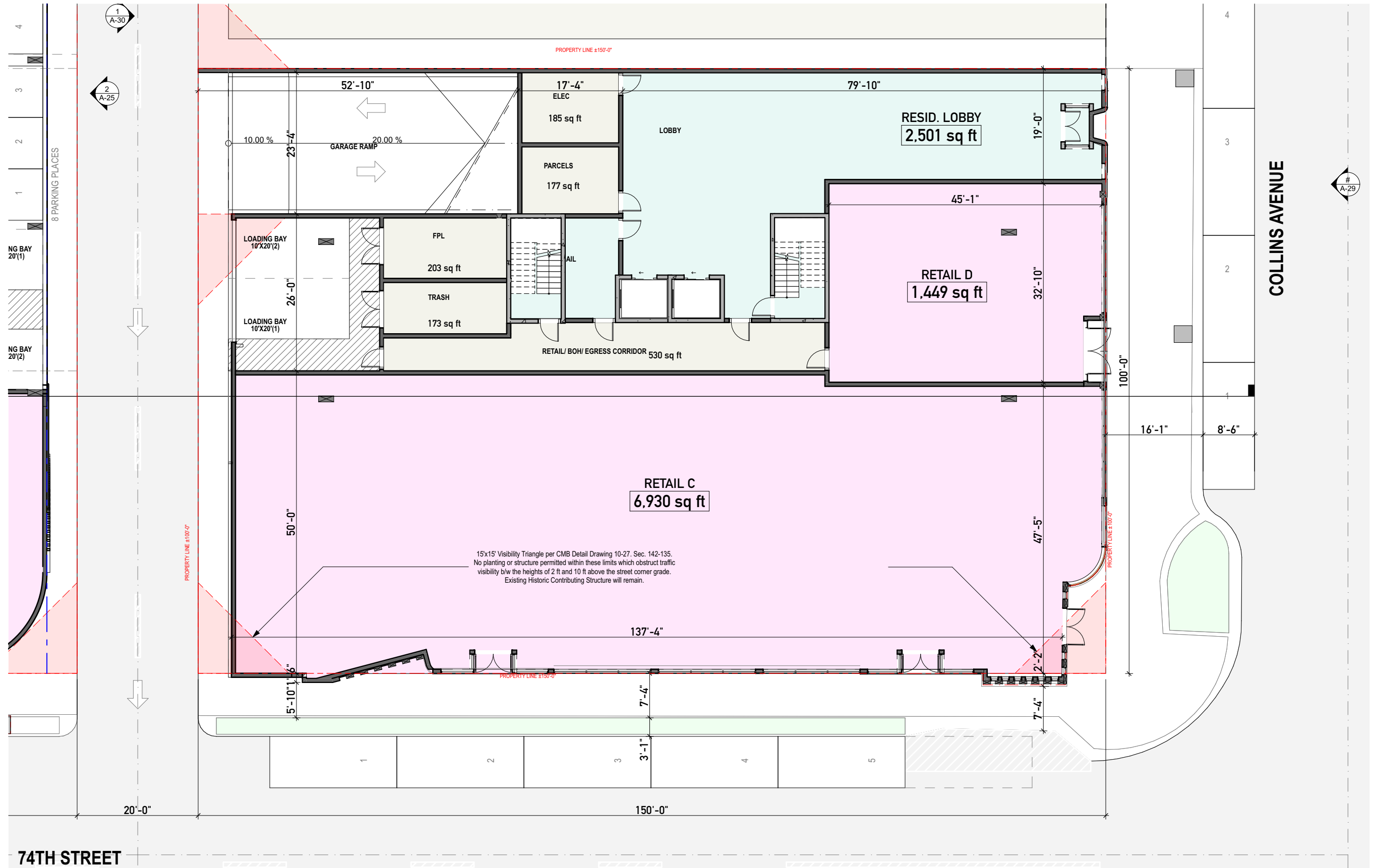


1/32" = 1'-0"

AMENITIES DECK

1

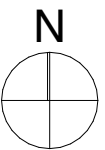




1/16" = 1'-0"

GROUND LEVEL

1

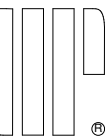


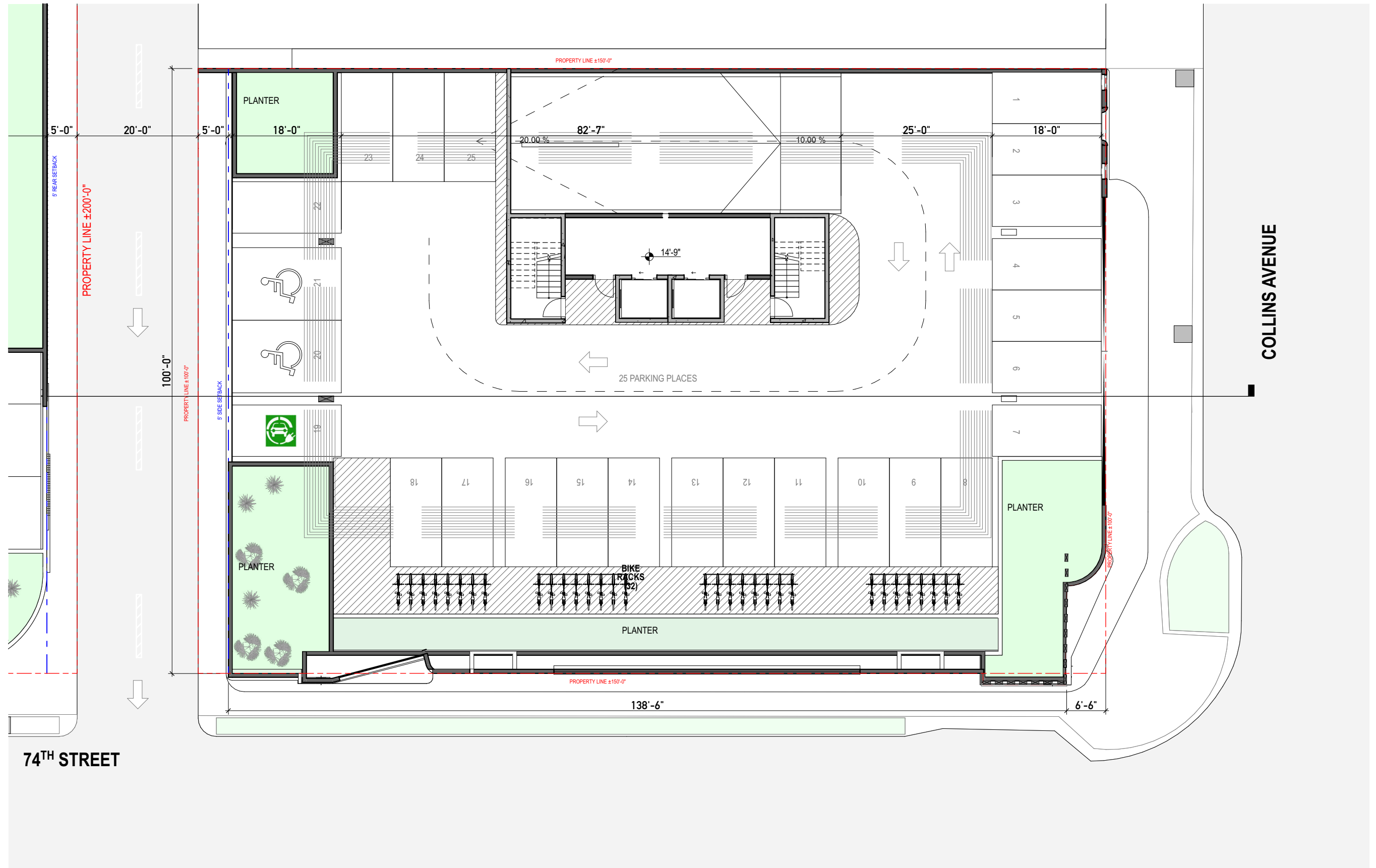
A-23

7410 COLLINS AVENUE

COLLINS FINAL HPB SUBMITTAL  
URBAN ROBOT © 2024  
AR#99232 Sebastian Velez

ENLARGED GROUND FLOOR 5/6/24

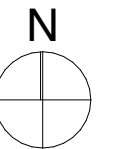




1/16" = 1'-0"

SECOND LEVEL

1



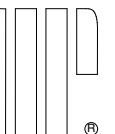
A-24

ENLARGED SECOND FLOOR - PARKING

5/6/24

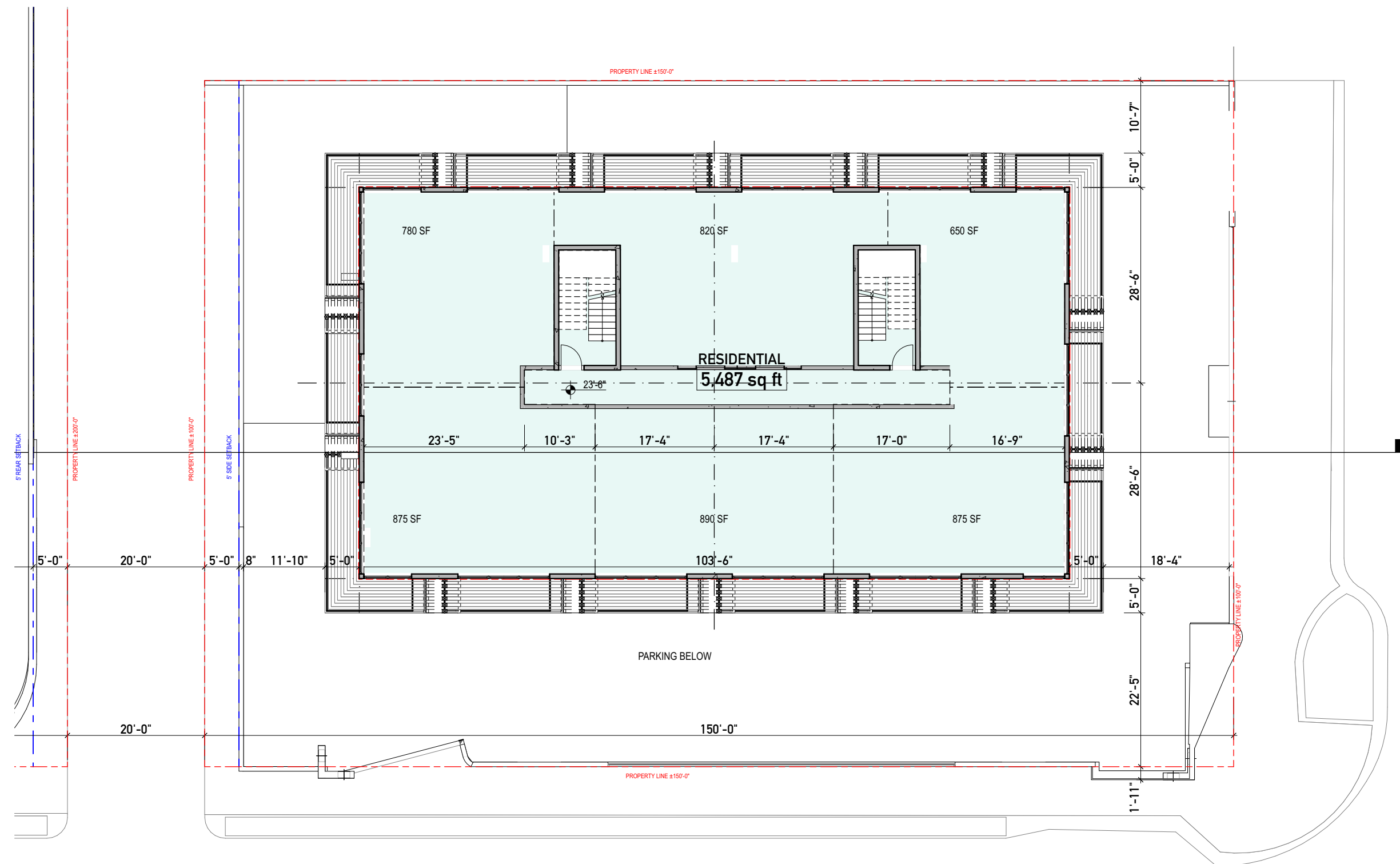
7410 COLLINS AVENUE

COLLINS FINAL HPB SUBMITTAL  
URBAN ROBOT © 2024  
AR#99232 Sebastian Velez



COLLINS AVENUE

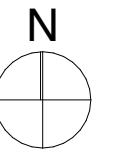
74<sup>TH</sup> STREET



1/16" = 1'-0"

THIRD LEVEL

1

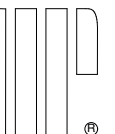


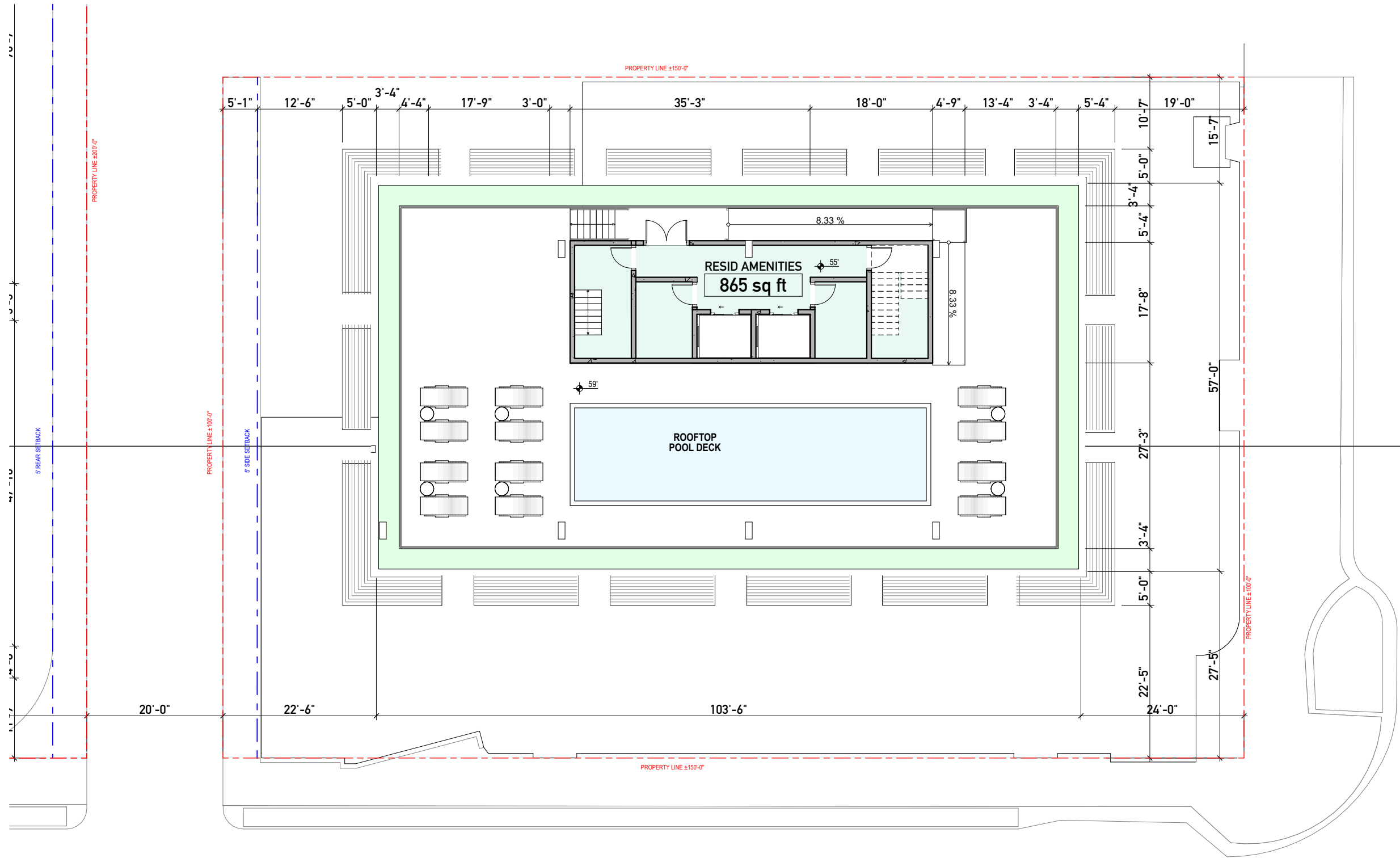
A-25

ENLARGED THIRD - FIFTH FLOOR 5/6/24

7410 COLLINS AVENUE

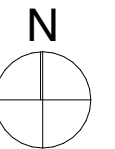
COLLINS FINAL HPB SUBMITTAL  
URBAN ROBOT © 2024  
AR#99232 Sebastian Velez





1/16" = 1'-0"

AMENITIES DECK



A-26

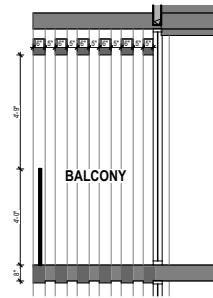
ENLARGED ROOF TOP 5/6/24

7410 COLLINS AVENUE

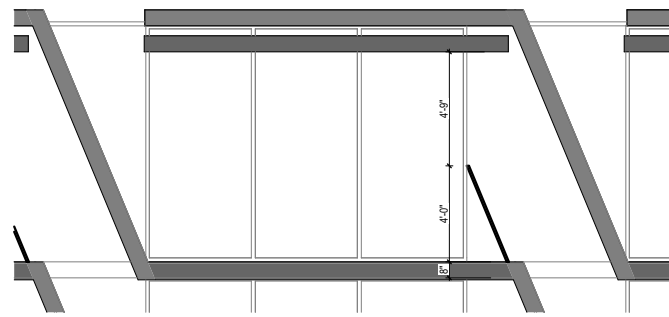
COLLINS FINAL HPB SUBMITTAL  
 URBAN ROBOT © 2024  
 AR#99232 Sebastian Velez







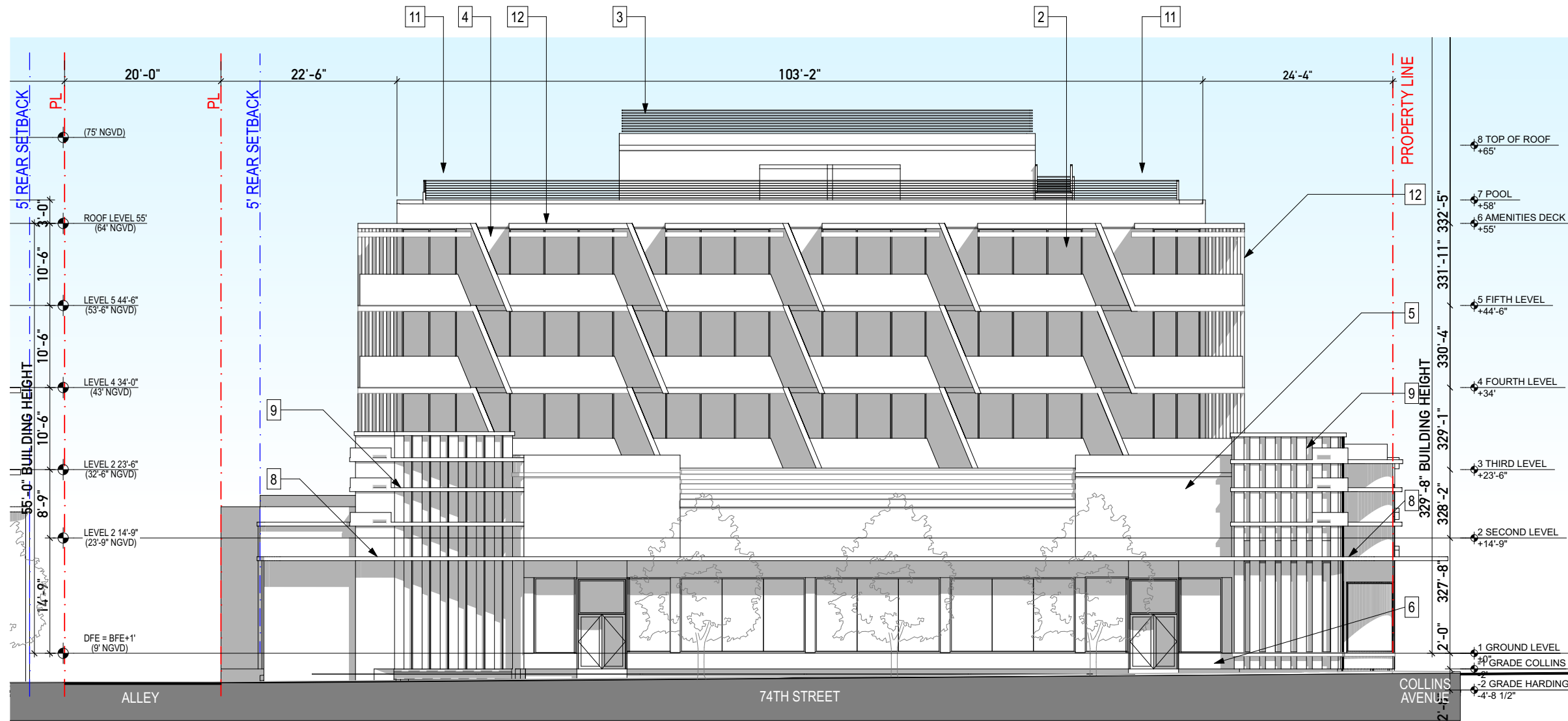
1/8" = 1'-0" BALCONY DETAIL



1/8" = 1'-0" BALCONY DETAIL

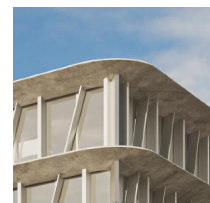


12 SLANTED ALUMINUM BALCONY LOUVERS

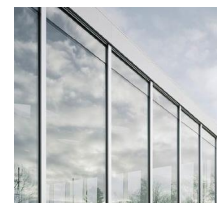


1/16" = 1'-0"

SOUTH ELEVATION



1 CUSTOM POURED CONCRETE SLAB



2 CLEAR GLASS GLAZING WITH ANODIZED METAL ALUMINUM



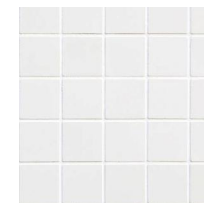
3 MECHANICAL SCREEN WITH METAL LOUVERS



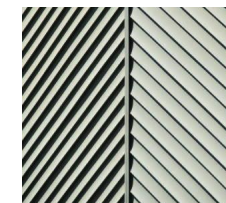
4 EXTERIOR WHITE STUCCO



5 COLOR STUCCO FINISH



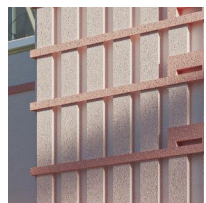
6 18" HIGH KNEEWALL, 4"X4" WHITE TILE



7 ALUMINUM WHITE POWDER-COATED LOUVERS

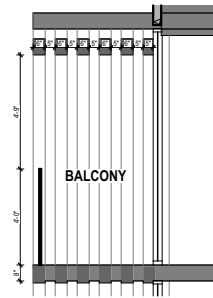


8 HISTORIC RESTORED EYEBROWS

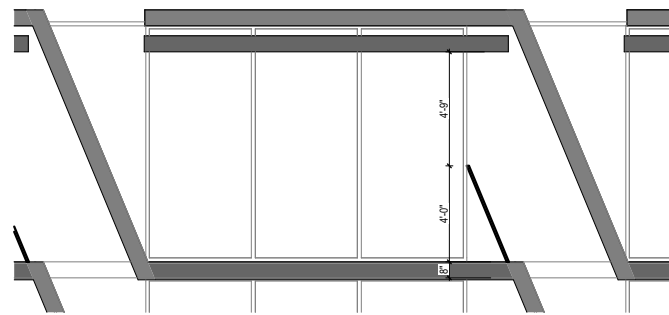


9 HISTORIC RESTORED FLUTED CONCRETE

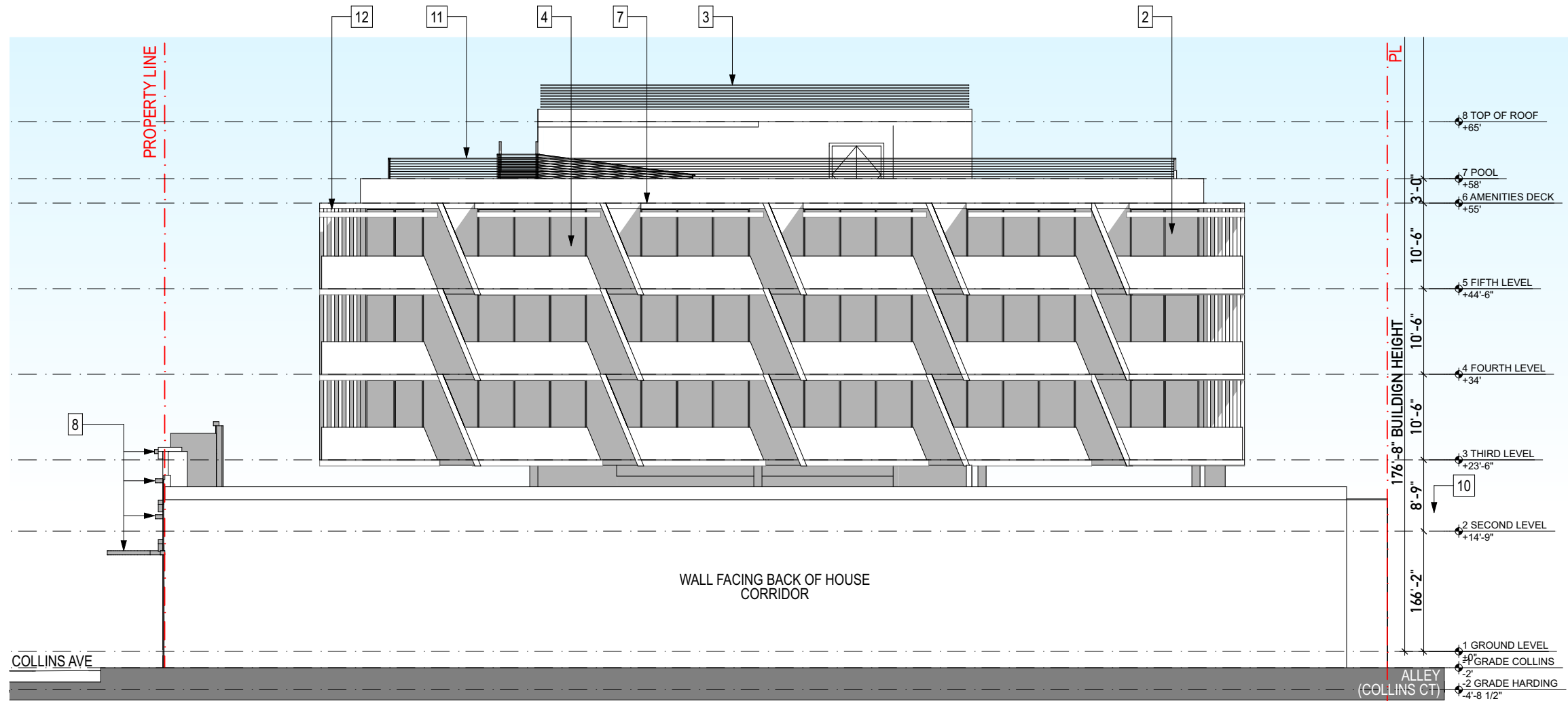




1/8" = 1'-0" BALCONY DETAIL



1/8" = 1'-0" BALCONY DETAIL



1/16" = 1'-0"

NORTH ELEVATION - COLLINS

12 SLANTED ALUMINUM BALCONY LOUVERS

1 CUSTOM POURED CONCRETE SLAB

2 CLEAR GLASS GLAZING WITH ANODIZED METAL ALUMINUM

3 MECHANICAL SCREEN WITH METAL LOUVERS

4 EXTERIOR WHITE STUCCO

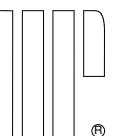
5 COLOR STUCCO FINISH

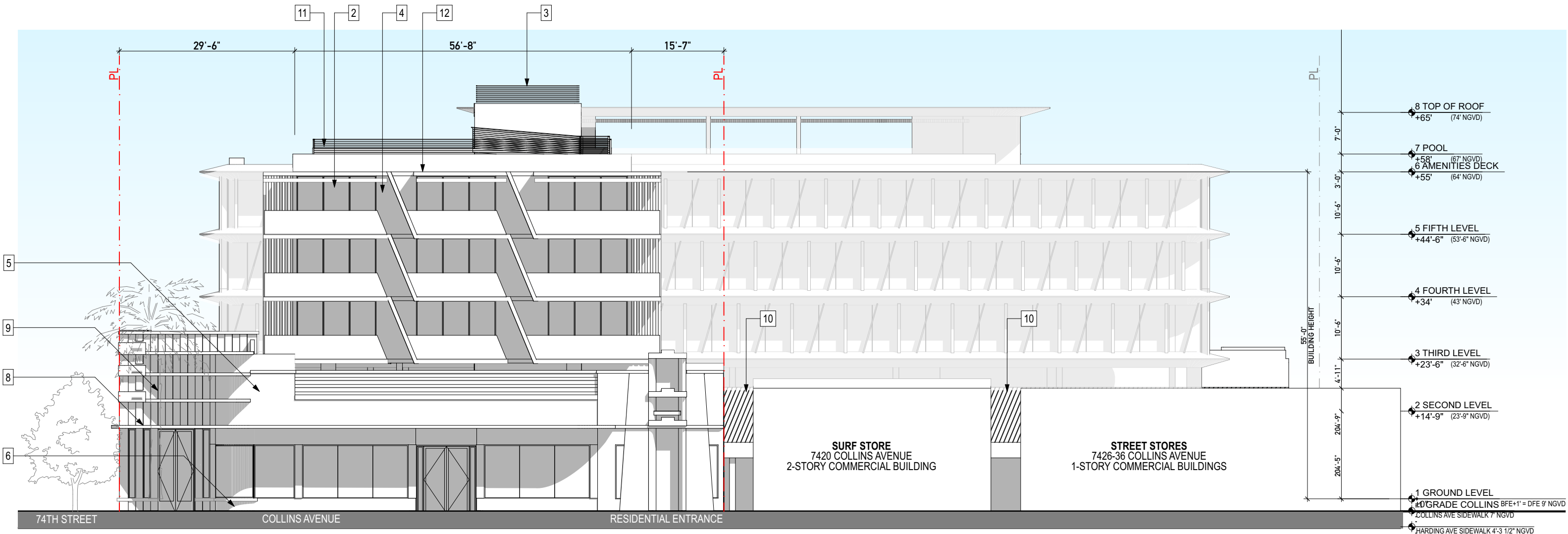
6 18" HIGH KNEEWALL, 4"X4" WHITE TILE

7 ALUMINUM WHITE POWDER-COATED LOUVERS

8 HISTORIC RESTORED EYEBROWS

9 HISTORIC RESTORED FLUTED CONCRETE



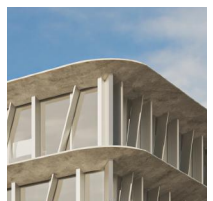


1/16" = 1'-0"

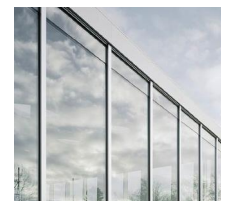
EAST ELEVATION - COLLINS



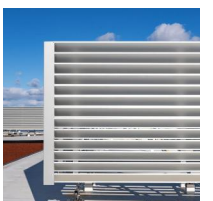
12 SLANTED ALUMINUM BALCONY LOUVERS



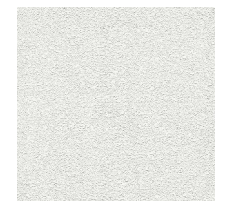
1 CUSTOM POURED CONCRETE SLAB



2 CLEAR GLASS GLAZING WITH ANODIZED METAL ALUMINUM



3 MECHANICAL SCREEN WITH METAL LOUVERS



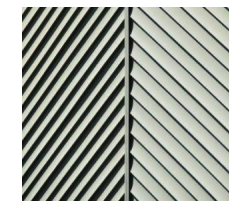
4 EXTERIOR WHITE STUCCO



5 COLOR STUCCO FINISH



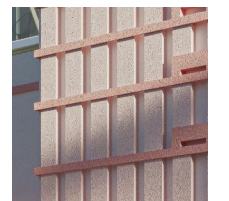
6 18" HIGH KNEEWALL, 4"X4" WHITE TILE



7 ALUMINUM WHITE POWDER-COATED LOUVERS



8 HISTORIC RESTORED EYEBROWS



9 HISTORIC RESTORED FLUTED CONCRETE

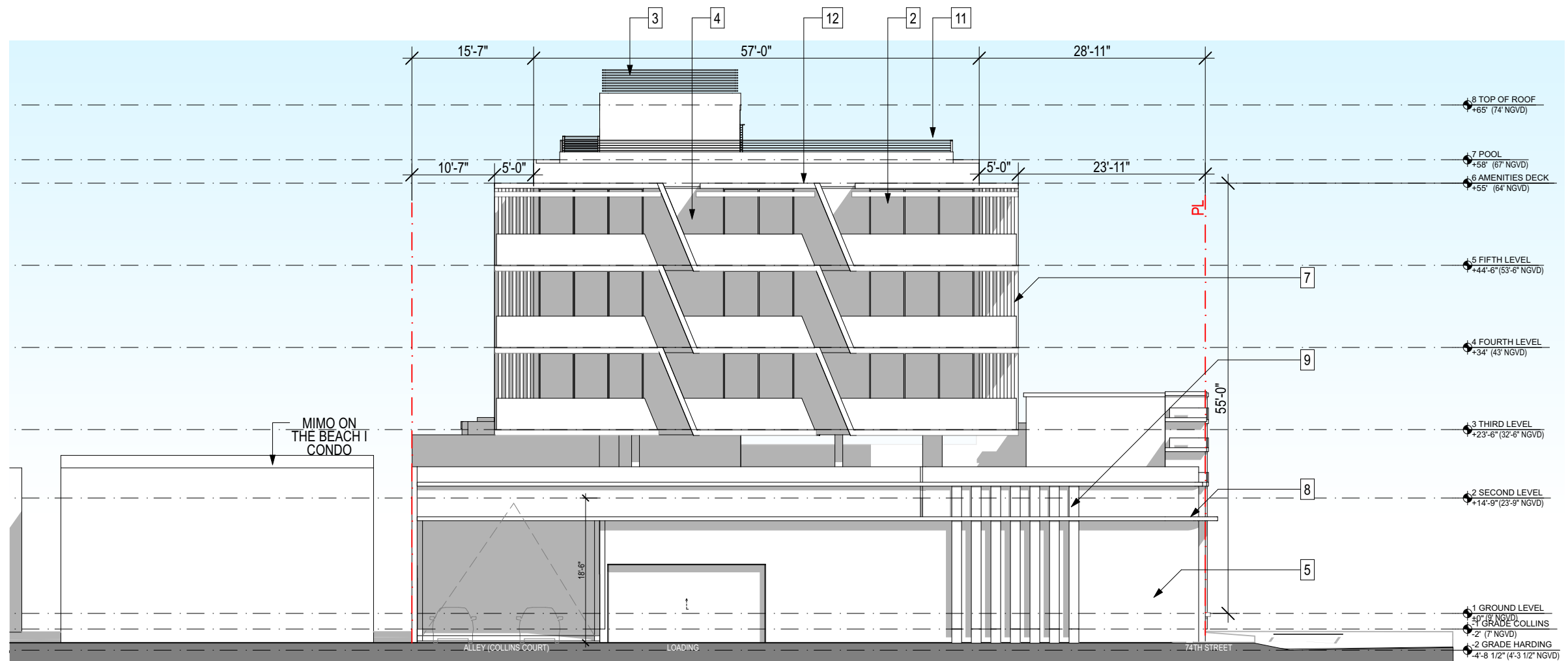
A-29

7410 COLLINS AVENUE

COLLINS FINAL HPB SUBMITTAL  
URBAN ROBOT © 2024  
AR#99232 Sebastian Velez





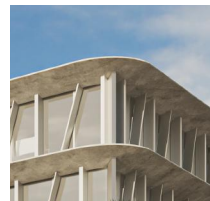


1/16" = 1'-0"

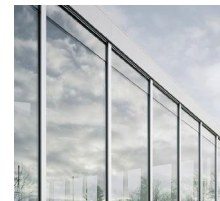
WEST ELEVATION - COLLINS



12 SLANTED ALUMINUM BALCONY LOUVERS



1 CUSTOM POURED CONCRETE SLAB



2 CLEAR GLASS GLAZING WITH ANODIZED METAL ALUMINUM



3 MECHANICAL SCREEN WITH METAL LOUVERS



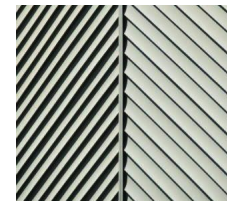
4 EXTERIOR WHITE STUCCO



5 COLOR STUCCO FINISH



6 18" HIGH KNEEWALL, 4"x4" WHITE TILE



7 ALUMINUM WHITE POWDER-COATED LOUVERS



8 HISTORIC RESTORED EYEBROWS



9 HISTORIC RESTORED FLUTED CONCRETE

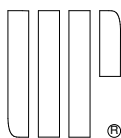
A-30

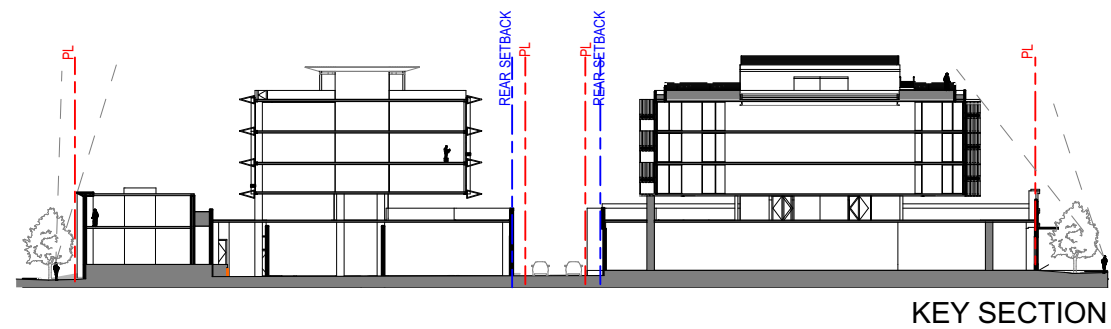
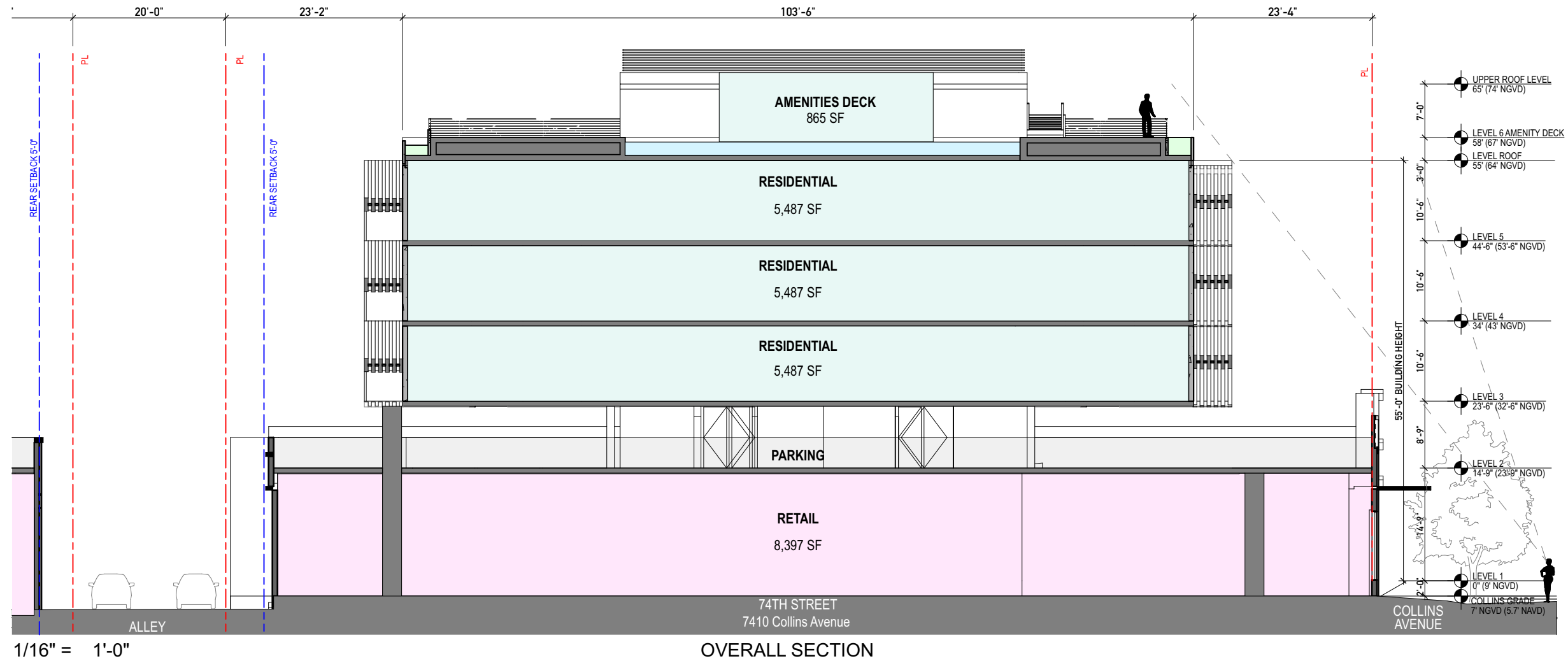
WEST ELEVATION

5/6/24

7410 COLLINS AVENUE

COLLINS FINAL HPB SUBMITTAL  
URBAN ROBOT © 2024  
AR#99232 Sebastian Velez



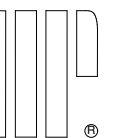


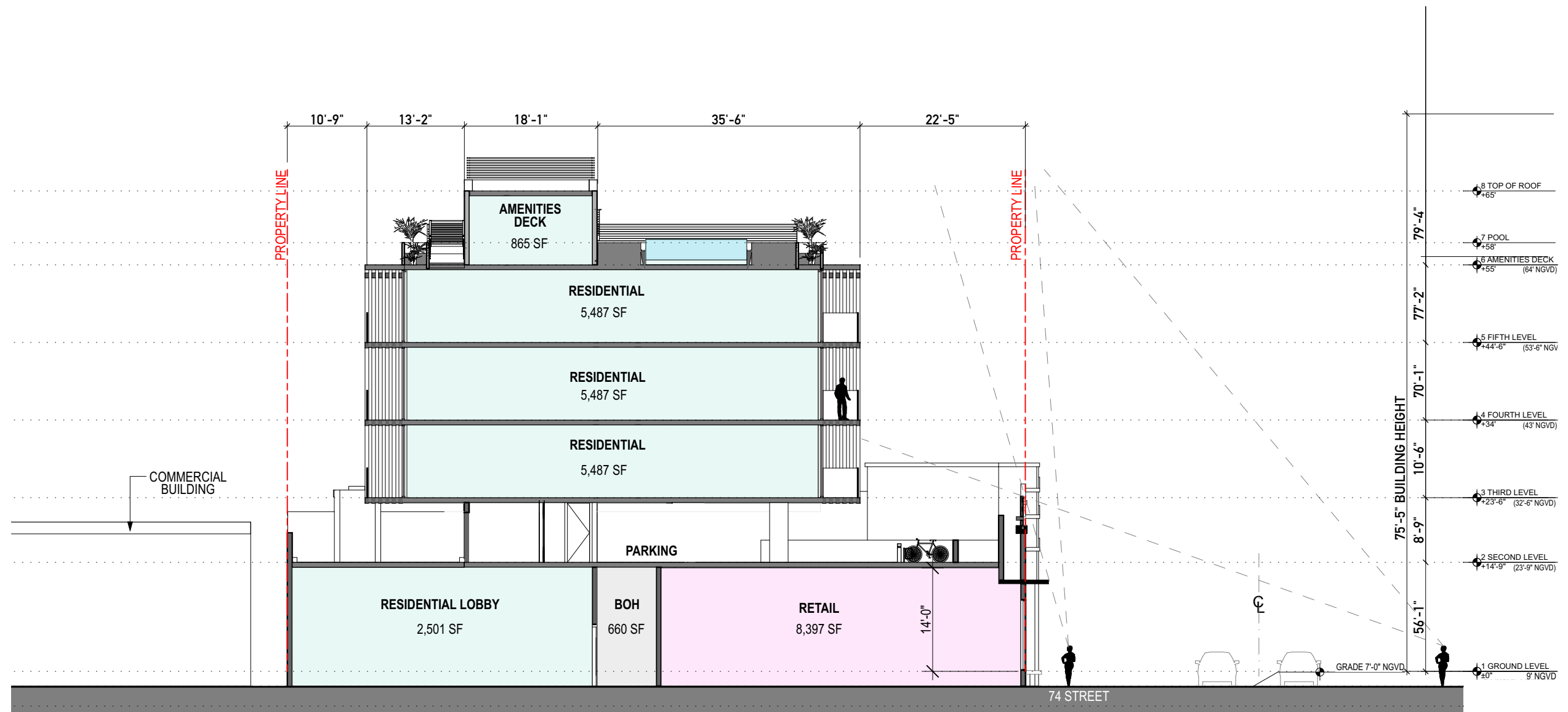
A-31

LONGITUDINAL SECTION 5/6/24

7410 COLLINS AVENUE

COLLINS FINAL HPB SUBMITTAL  
 URBAN ROBOT © 2024  
 AR#99232 Sebastian Velez





1/16" = 1'-0"

RESIDENTIAL SECTION

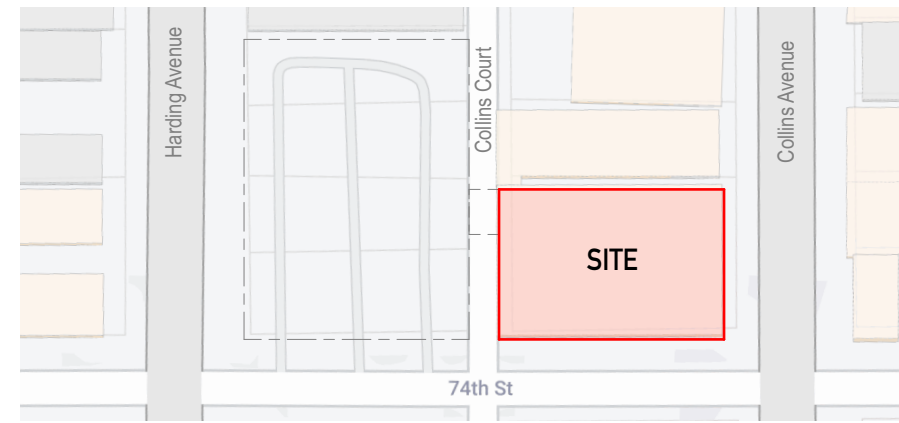
A-32

CROSS SECTION 5/6/24

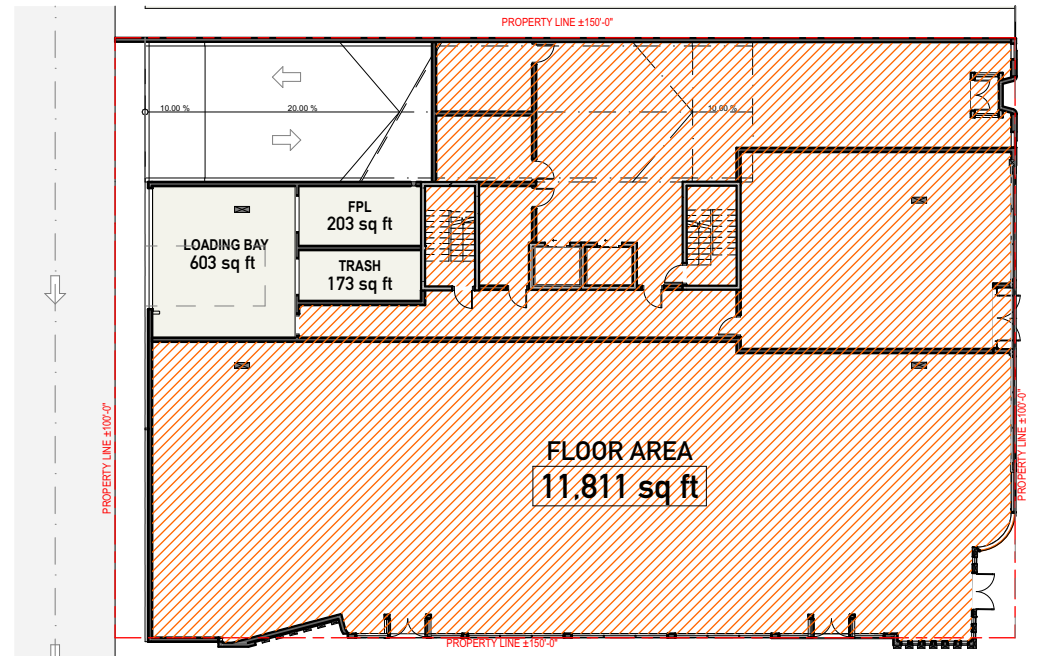
7410 COLLINS AVENUE

COLLINS FINAL HPB SUBMITTAL  
 URBAN ROBOT © 2024  
 AR#99232 Sebastian Velez

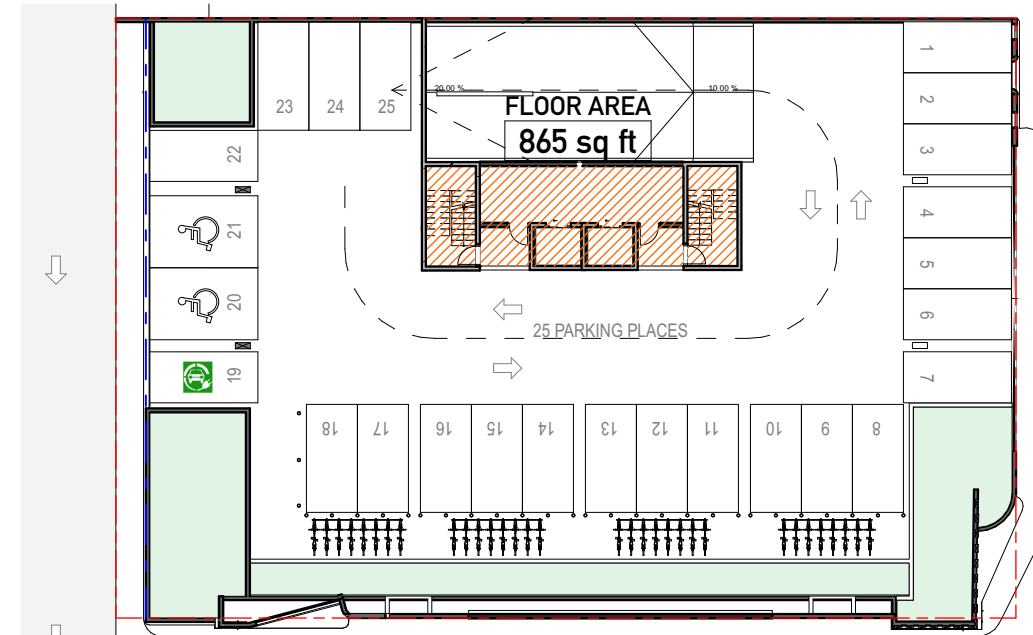




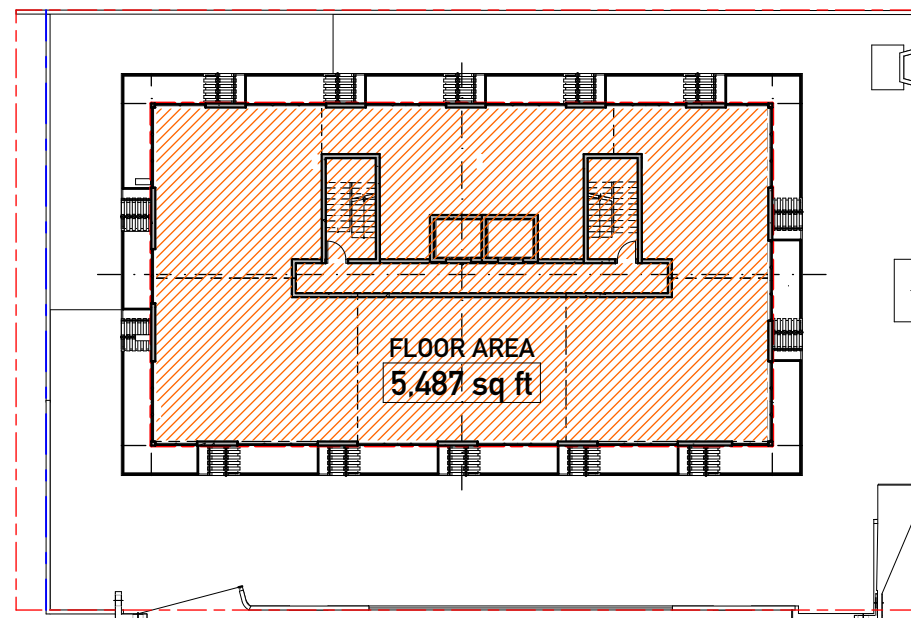
1/128"= 1'-0" KEYPLAN



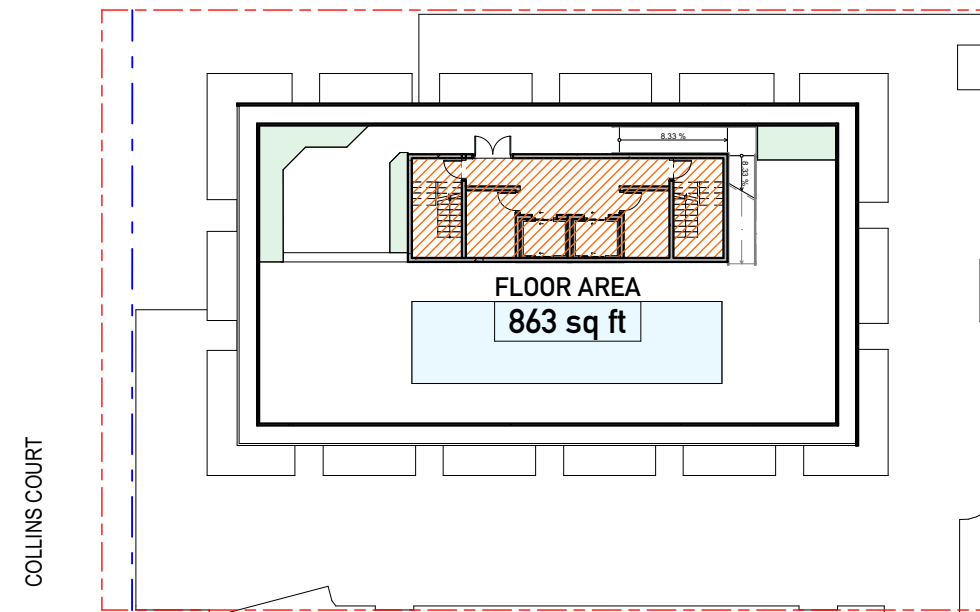
1/32" = 1'-0" EXISTING GROUND LEVEL 1



1/32" = 1'-0" SECOND LEVEL 2



1/32" = 1'-0" THIRD LEVEL - FIFTH LEVEL 3



1/32" = 1'-0" AMENITIES DECK 4

7410 COLLINS AVE  
COLLINS FAR SCHEDULE

LOCATION	AREA
GROUND LEVEL	11,810.58
SECOND LEVEL	865.02
THIRD LEVEL	5,487.37
FOURTH LEVEL	5,487.37
FIFTH LEVEL	5,487.37
AMENITIES DECK	863.33
	30,000 SF

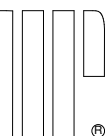
740-7425 HARDING AVE  
HARDING FAR SCHEDULE

LOCATION	AREA
GROUND LEVEL	13,589.52
SECOND LEVEL	7,032.82
THIRD LEVEL	12,934.80
FOURTH LEVEL	12,934.80
FIFTH LEVEL	12,934.89
AMENITIES DECK	573.61
	60,000 SF
TOTAL FAR	90,000.00 sq ft

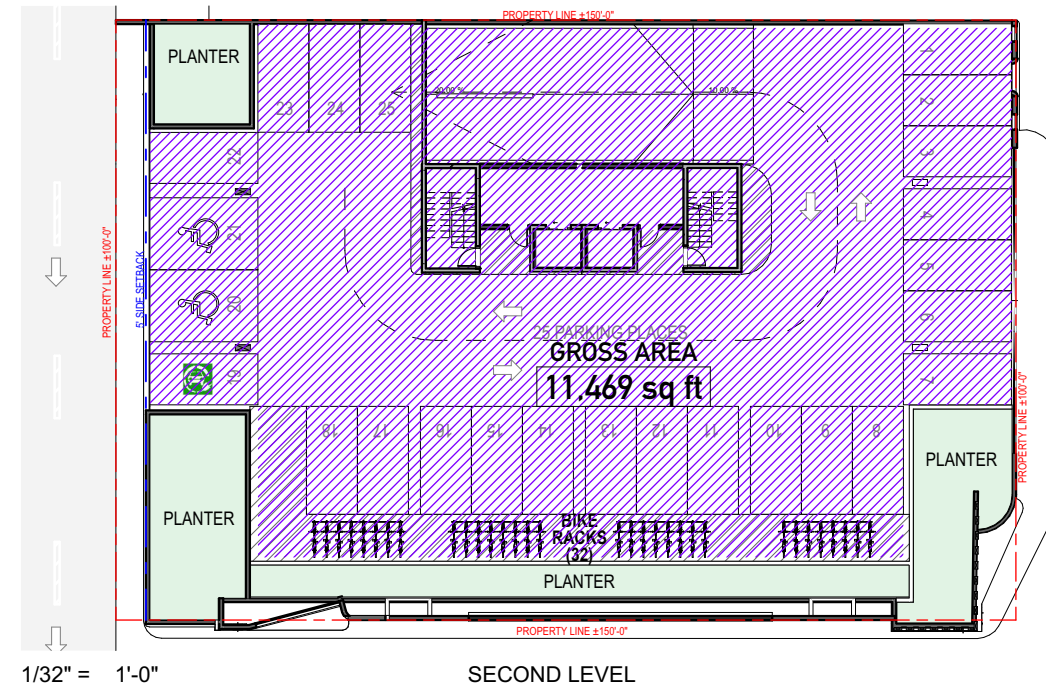
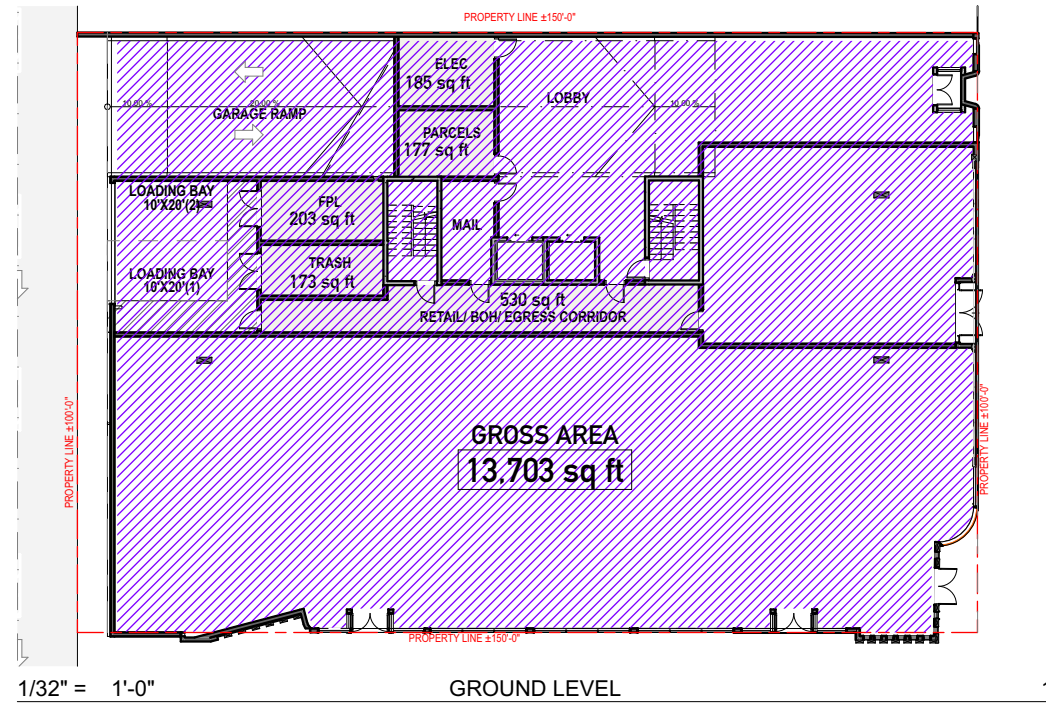
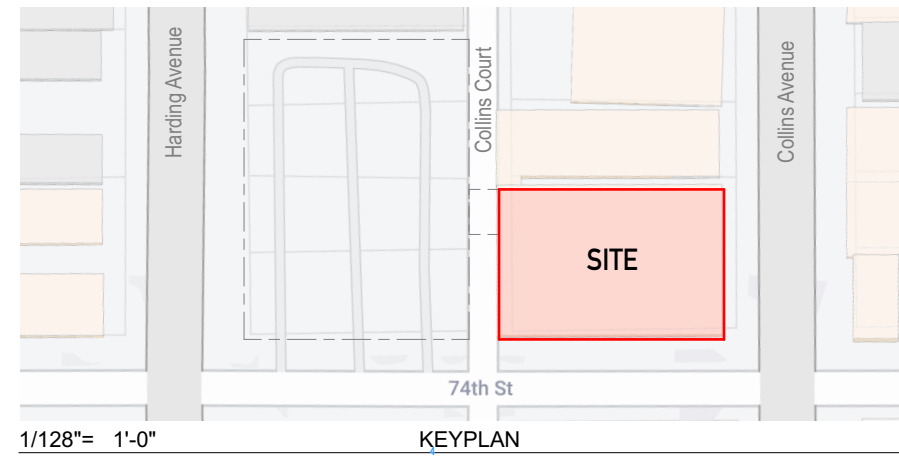
A-33

7410 COLLINS AVENUE

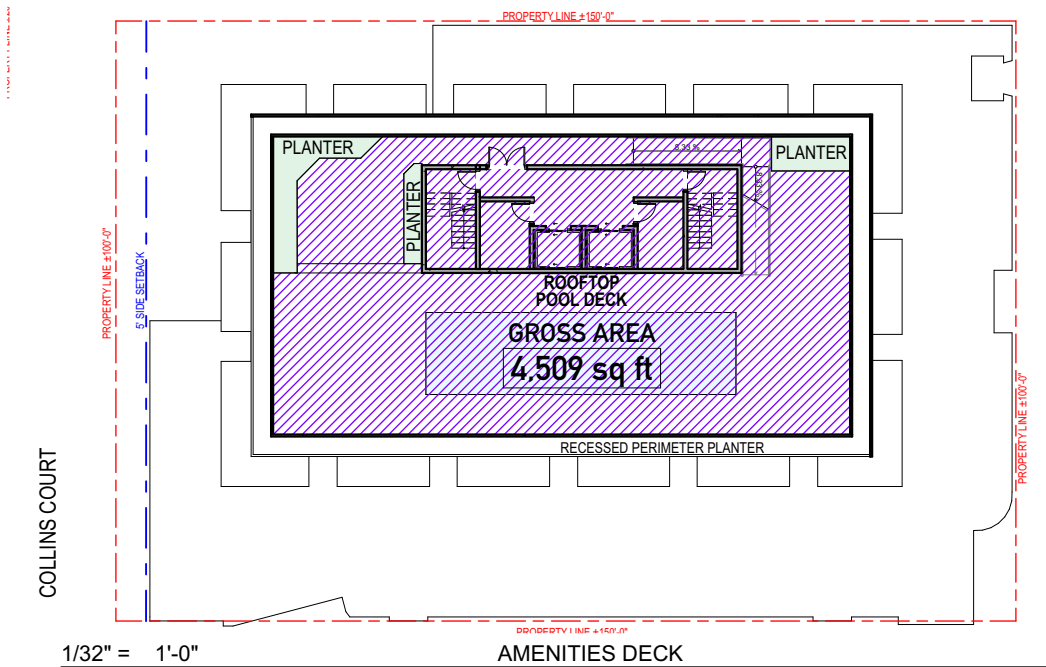
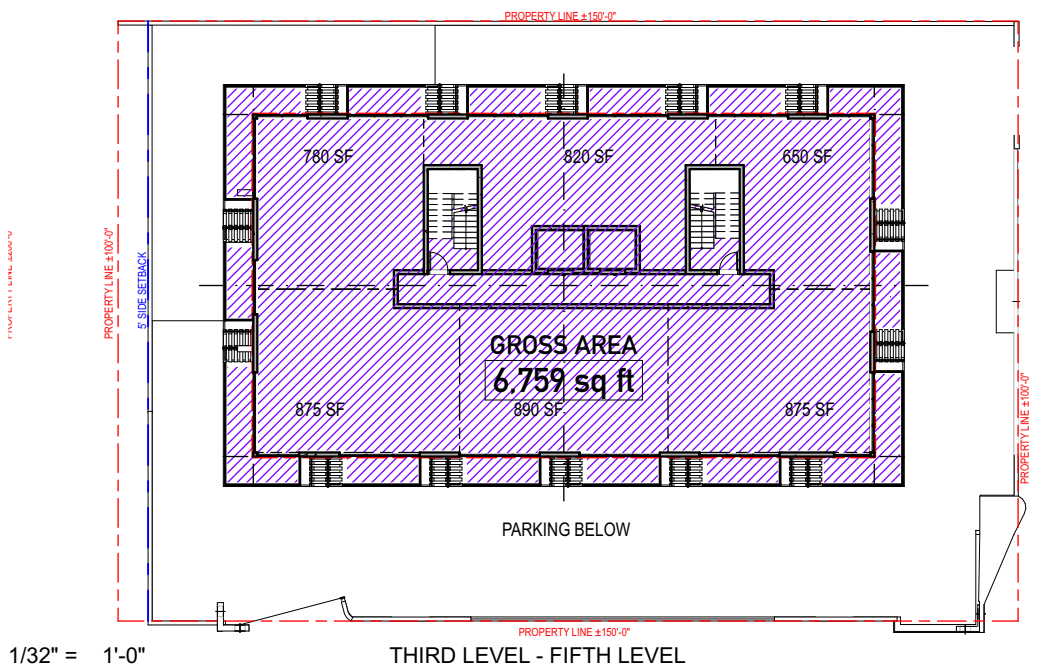
COLLINS FINAL HPB SUBMITTAL  
URBAN ROBOT © 2024  
AR#99232 Sebastian Velez







Gross Areas - Collins	
LOCATION	AREA
GROUND LEVEL	13,703.36
SECOND LEVEL	11,469.39
THIRD LEVEL	6,758.90
FOURTH LEVEL	6,758.90
FIFTH LEVEL	6,758.90
AMENITIES DECK	4,509.26
	49,958.71 ft <sup>2</sup>



A-34

7410 COLLINS AVENUE

COLLINS FINAL HPB SUBMITTAL  
URBAN ROBOT © 2024  
AR#99232 Sebastian Velez







Pedestrian view from the Collins Ave/ 74th Street intersection

A-35

7401-7425 HARDING AVENUE

3 D VIEWS 5/6/24

COLLINS FINAL HPB SUBMITTAL  
URBAN ROBOT © 2024  
AR#99232 Sebastian Velez







Aerial view

A-36

7401-7425 HARDING AVENUE

3 D VIEWS 5/6/24

COLLINS FINAL HPB SUBMITTAL  
URBAN ROBOT © 2024  
AR#99232 Sebastian Velez







Pedestrian view along the 74th street

A-37

7401-7425 HARDING AVENUE

3 D VIEWS 5/6/24

COLLINS FINAL HPB SUBMITTAL  
URBAN ROBOT © 2024  
AR#99232 Sebastian Velez







Pedestrian view from the Harding Ave/ 74th Street intersection

A-38

7401-7425 HARDING AVENUE

COLLINS FINAL HPB SUBMITTAL  
URBAN ROBOT © 2024  
AR#99232 Sebastian Velez

