

#### PLANT SYMBOLS

|                         |          |                          |
|-------------------------|----------|--------------------------|
|                         |          |                          |
| EXISTING PALM TO REMAIN | NEW PALM | SHRUB/ACCENT PLANT       |
|                         |          |                          |
| EXISTING TREE TO REMAIN | NEW TREE | NEW GROUND COVER & COUNT |

**NOTE:**  
SEE SHEET L-3.01 FOR PLANT LIST.

ENLARGED GROUND LANDSCAPE PLAN - MATCHLINE B  
SCALED TO FIT 11"x17"

NATURALFICIAL, INC.  
Landscape Architecture + Design  
6915 Red Road, Suite 224  
Coral Gables, FL 33143  
O: 786.777.6664 / M: 305.321.2341  
www.naturalficial.com  
FIRM REG. NO. LC26000548



RENE GONZALEZ architect  
670 NE 50 TERRACE - 895 795 6903  
MIAMI, FLORIDA 33137  
WWW.RENEGONZALEZARCHITECT.COM  
AA # 0003351  
AR # 0016824

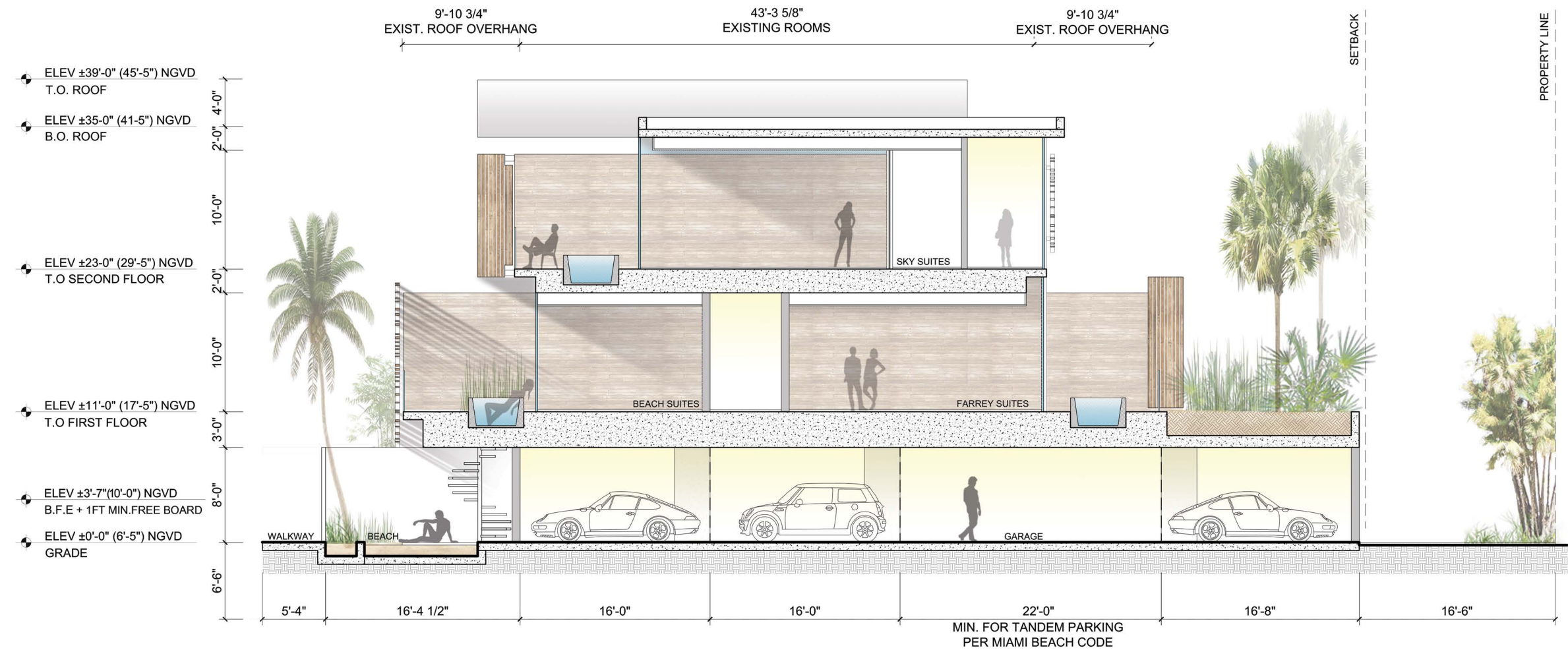
THE STANDARD HOTEL  
40 ISLAND AVENUE  
MIAMI BEACH, FL 33139  
DRB FIRST SUBMITTAL

PETER ANSELMO  
R.L.A. FL# 6667221  
DATE: 2016.08.26  
SCALE: SCALED TO FIT 11"x17"  
REVISIONS:

ENLARGED GROUND  
LANDSCAPE  
PLAN - MATCHLINE B

L-3.03  
NORTH

TO THE BEST OF OUR KNOWLEDGE,  
THESE PLANS COMPLY WITH ALL  
APPLICABLE BUILDING AND ZONING CODES



THE STANDARD HOTEL  
40 ISLAND AVENUE  
MIAMI BEACH, FL 33139

RENE GONZALEZ architect  
670 NE 50 TERRACE  
MIAMI, FLORIDA 33137  
F: 305.762.5893  
T: 305.762.5895  
WWW.RENEGONZALEZARCHITECT.COM  
AA # 0003351

DATE: 8.26.2016  
SCALE:  
REVISIONS:

SECTION

SECTION

A-4.0