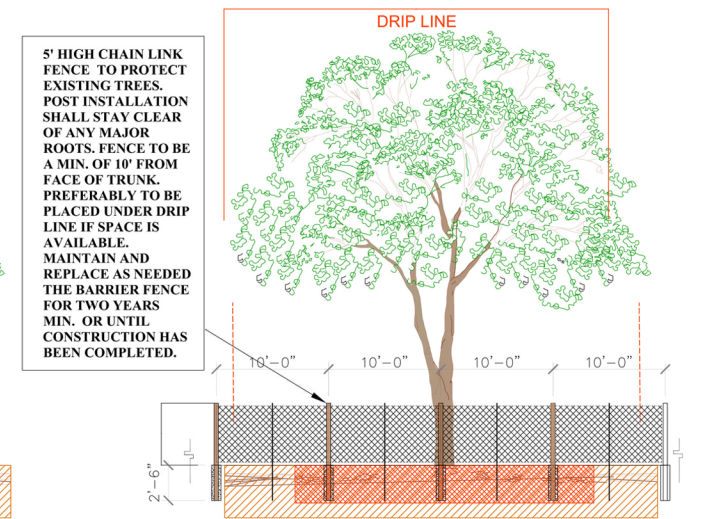
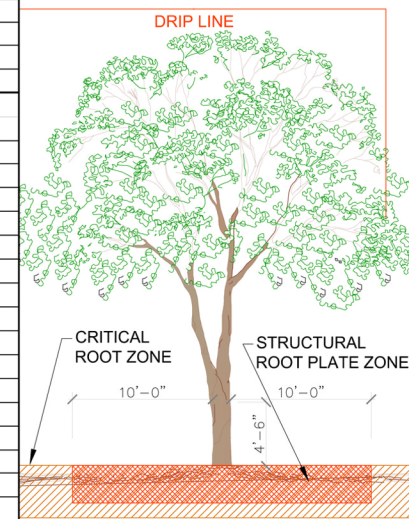
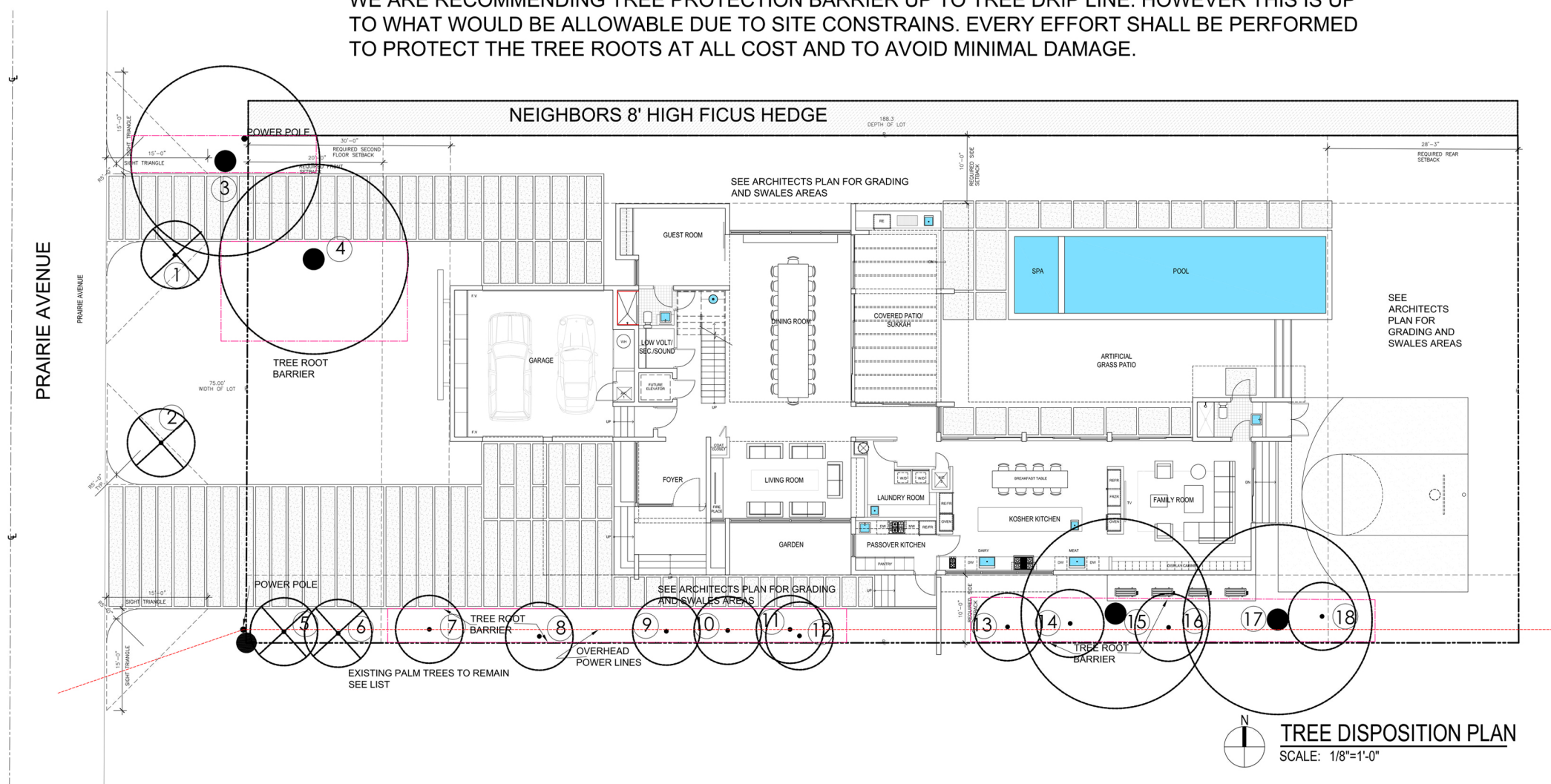


3155 PRAIRIE AVENUE									
TREE NO.	BOTANICAL NAMES	TYPE (COMMON NAME)	DIAMETER	HEIGHT	TREE EXISTING CANOPY IN FEET	CATEGORY TYPE (xxx)=Canopy	CONDITION	DISPOSITION OF TREES AND PALMS	
			INCHES AT 4.5' DBH	IN FEET					
1	Veirchia merrilli	Christmas Palm	8	10		50	Fair	DOUBLE TRUNK-TO BE REMOVED IN RIGHTS OF WAY - INCONFLICT WITH VISIBILITY TRIANGLE	
2	Veirchia merrilli	Christmas Palm	8	10		50	Fair	DOUBLE TRUNK-TO BE REMOVED IN RIGHTS OF WAY - INCONFLICT WITH VISIBILITY TRIANGLE	
3	Spathodea campanulata	African Tulip Tree	36	40	28	300	Fair	TO REMAIN	
4	Spathodea campanulata	African Tulip Tree	24	40	28	300	FAIR	TO REMAIN	
5	Ptychosperma elegans	SOLITARE PALM	7	10'		50	POOR	TO BE REMOVED POOR CONDION	
6	Phoenix roebellini	Dwarf date	7	10'		50	FAIR	TO BE REMOVED - MULTI TRUNK - WRONG LOCATION	
7	Veirchia merrilli	Christmas Palm	7	10'		50	FAIR	TO REMAIN	
8	Veirchia merrilli	Christmas Palm	7	10'		50	FAIR	TO REMAIN	
9	Veirchia merrilli	Christmas Palm	7	10'		50	FAIR	TO REMAIN	
10	Veirchia merrilli	Christmas Palm	7	10'		50	FAIR	TO REMAIN	
11	Veirchia merrilli	Christmas Palm	7	10'		50	FAIR	TO REMAIN	
12	Ptychosperma elegans	SOLITARE PALM	7	10'		50	FAIR	TO REMAIN	
13	Ptychosperma elegans	SOLITARE PALM	8	15		50	FAIR	TO REMAIN	
14	Ptychosperma elegans	SOLITARE PALM	8	15		50	FAIR	TO REMAIN	
15	Eriobotrya japonica	Loquat	12	30	25	150	FAIR	TO REMAIN-REQUIRES BRANCH PRUNING TO LIFT TREE UP	
16	Ptychosperma elegans	SOLITARE PALM	8	20		50	FAIR	TO REMAIN	
17	Persea americana	AVOCADO	12	20	16	300	FAIR	TO REMAIN	
18	Ptychosperma elegans	SOLITARE PALM	8	10		50	FAIR	TO REMAIN-MULTI TRUNKED	
						1650		TOTAL CANOPY	



TREE PROTECTION BARRIER FENCE DETAILS-NTS

NOTE:  
WE ARE RECOMMENDING TREE PROTECTION BARRIER UP TO TREE DRIP LINE. HOWEVER THIS IS UP TO WHAT WOULD BE ALLOWABLE DUE TO SITE CONSTRAINS. EVERY EFFORT SHALL BE PERFORMED TO PROTECT THE TREE ROOTS AT ALL COST AND TO AVOID MINIMAL DAMAGE.



NOTE:  
THE ONLY PALM TREES BEING REMOVED ARE TWO CHRISTMAS PALMS, ONE ROEBELLINI, AND ONE ALEXANDER. EITHER OF THESE PALMS DO NOT SHOW UP ON THE CITY OF MIAMI BEACH TREE LIST FOR CANOPY CREDIT. THEREFORE NO MITIGATION REQUIRED DUE TO ITS SPECIES. HOWEVER, IF WE WERE TO MITIGATE THE TOTAL EQUIVALENCY OF 50 PER PALM WILL EQUAL TO 200 SQ FT. OUR PROPOSED TREES OF 10 PLUS THE EXISTING TO REMAIN MORE THAN COVERS FOR THESE PALM TREE REMOVALS.

Mariano Corral  
 Digitally signed by Mariano Corral  
 DN: cn=Mariano Corral, o=Mariano Corral Landscape Architect, ou=Professional Seal, email=mariano@comcast.net, c=US  
 LA 666671  
 STATE OF FLORIDA

**MARIANO CORRAL**  
**LANDSCAPE ARCHITECT**  
 3001 SW 109 COURT MIAMI, FLORIDA 33165  
 TEL.: 305-551-1262  
 EMAIL: MARIANOCORRAL@COMCAST.NET

**CASA FOR NICOLE COHEN II**  
 3155 PRAIRIE AVE MIAMI BEACH, FLORIDA 33140

**MATEU ARCHITECTURE, INC.**  
 8887 SW 131 STREET MIAMI, FLORIDA 33176  
 TEL.: 305-233-3304  
 FAX.: 305-233-3326

DESIGN REVIEW BOARD - 03.09.2017 LD-1