

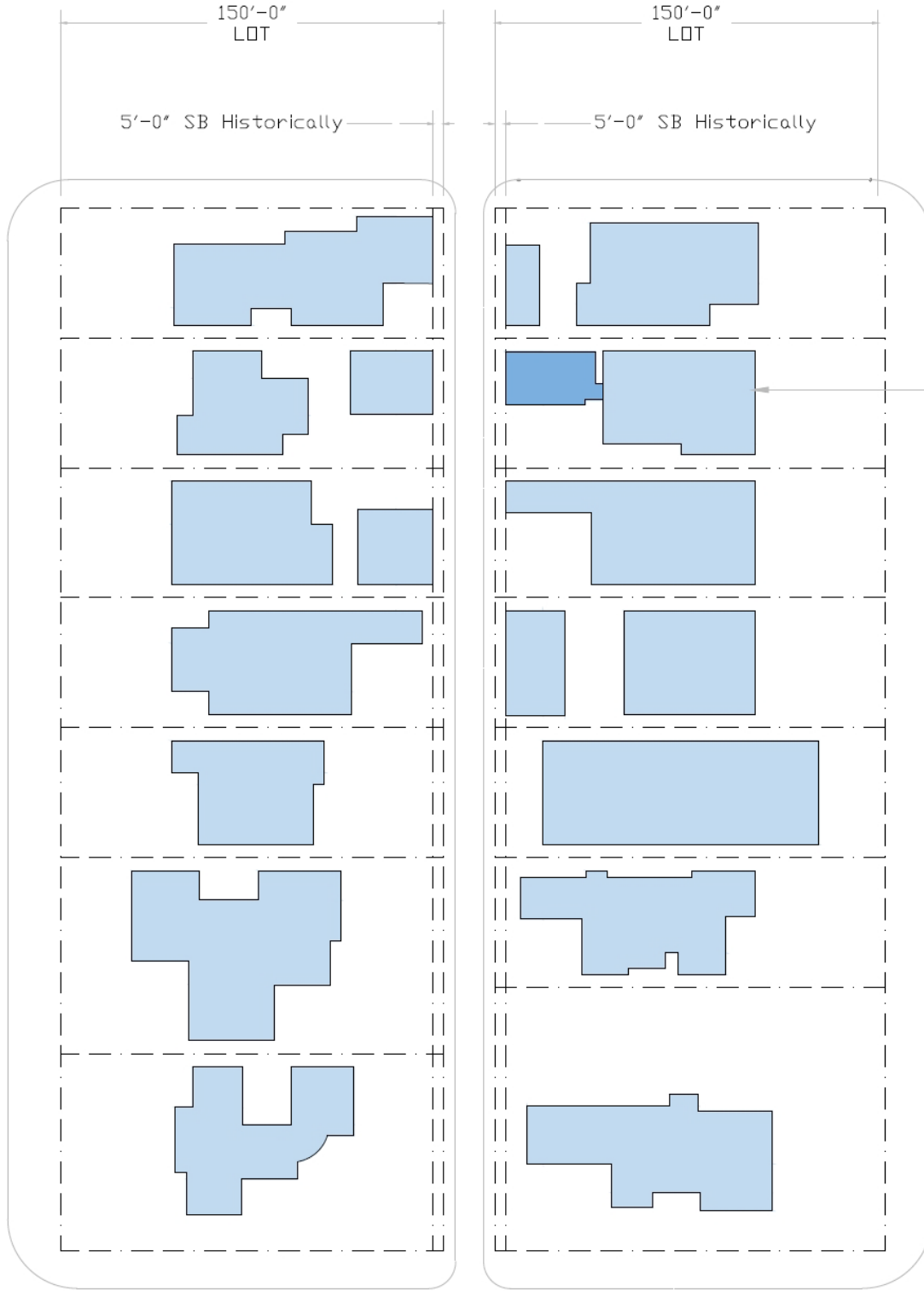




Circa 1949

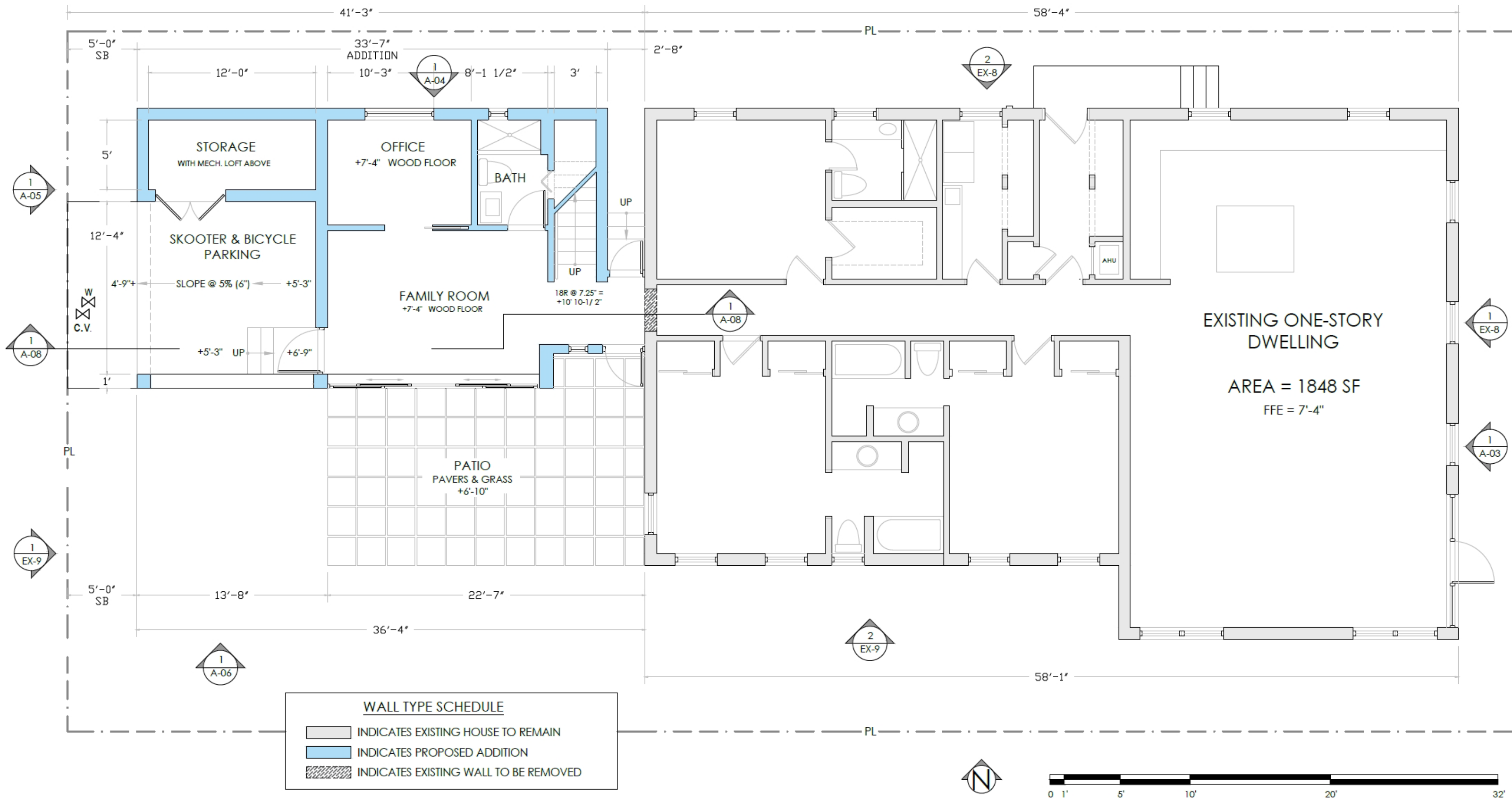


2023

LENOX AVENUE

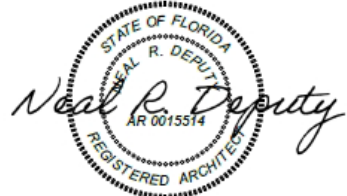


| | |
|---|---------------------|
|  | EXISTING RESIDENCES |
|  | PROPOSED ADDITION |



NEAL R. DEPUTY ARCHITECT
 dba NEAL R. DEPUTY PC, PA

1446 JEFFERSON AVENUE, MIAMI BEACH, FLORIDA 33139
 305-467-4026 NEALDEPUTY@GMAIL.COM FL# 0015514



New Addition to
1350 Michigan Avenue
 Miami Beach, Florida, 33139

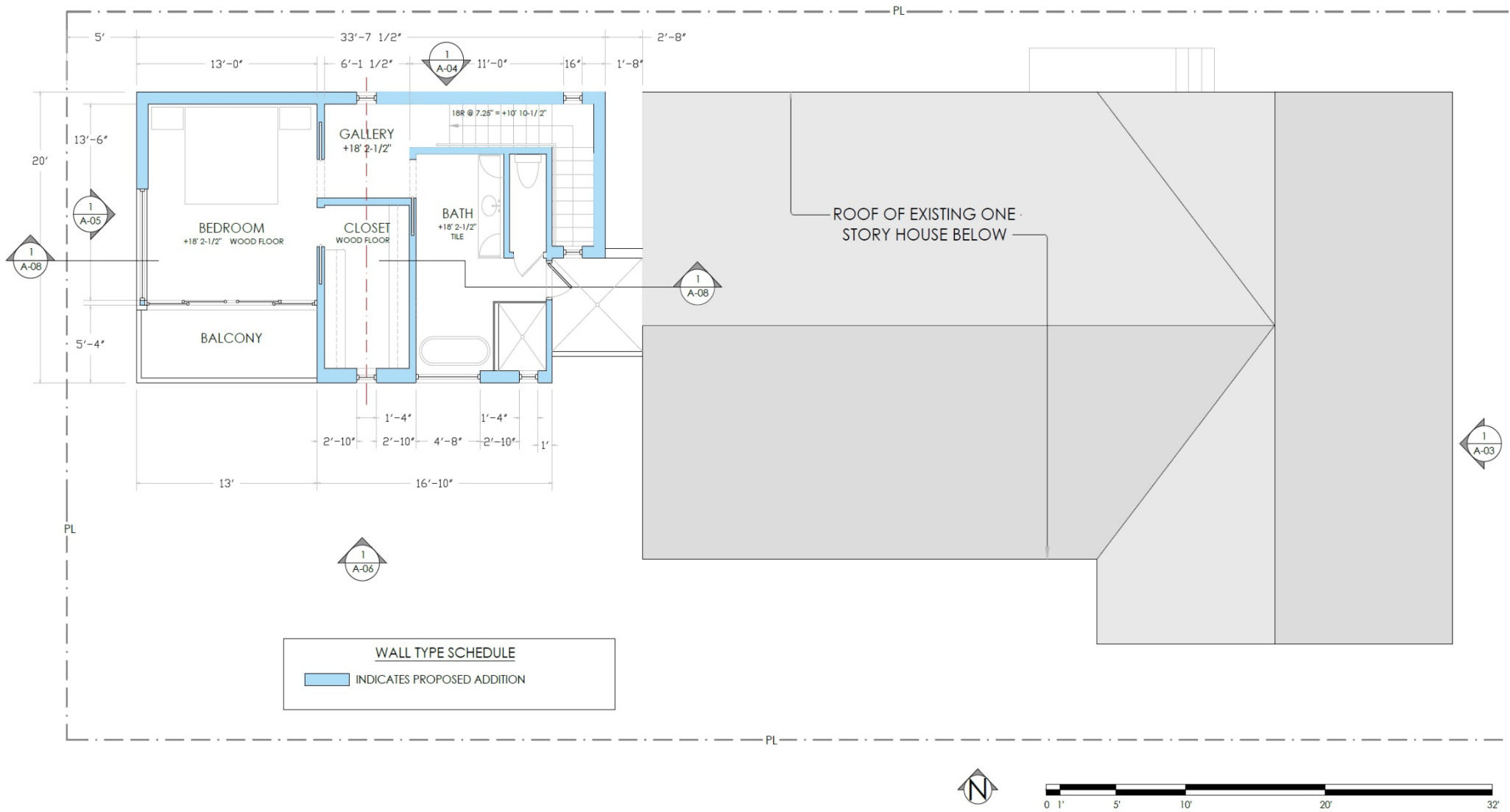
DRAWING ISSUES
 10 DEC 23 HPB SUBMISSION

SCALE: NTS

HOUSE & ADDITION PLANS

A-01

SHEET 13 OF 26



Proposed Second Floor Plan

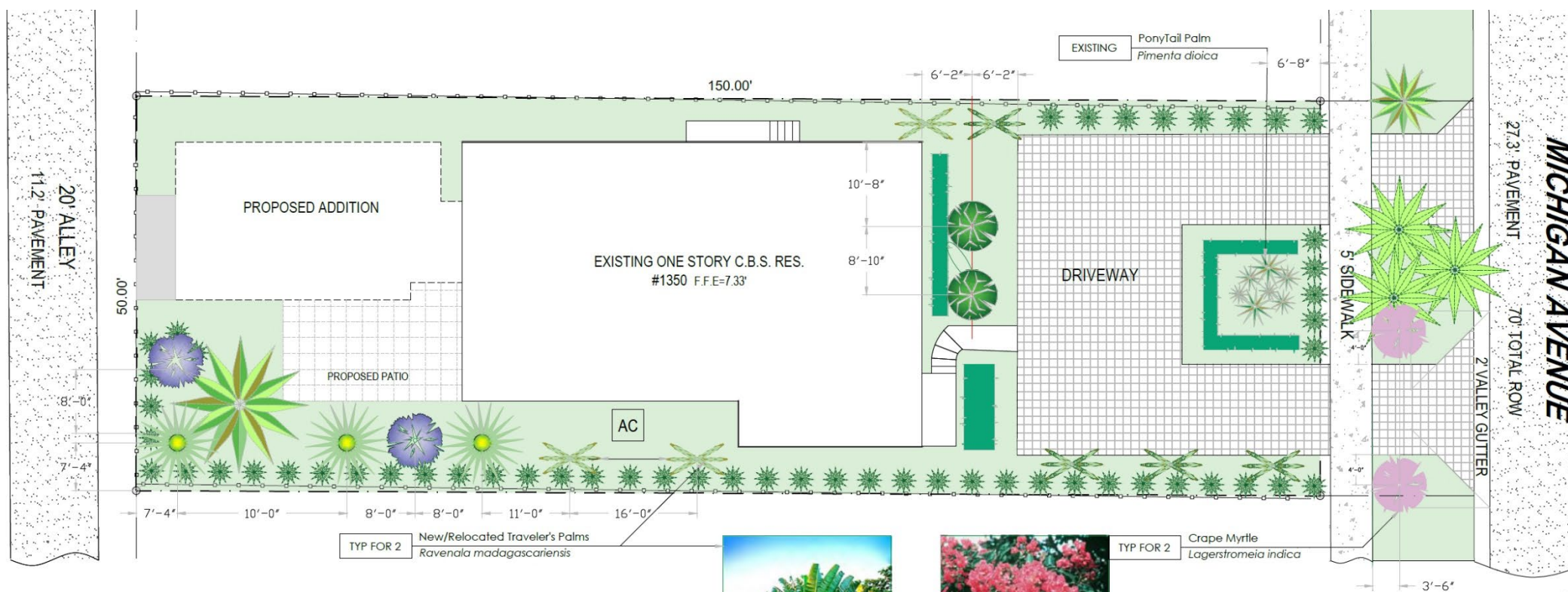


LENOX AVENUE



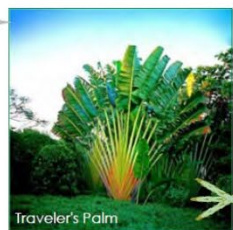
- EXISTING RESIDENCES
- PORTIONS OUTSIDE OF CURRENT 22'-6" SETBACK
- SUBJECT PROPERTY WITH PROPOSED ADDITION





TREE PLANTING SCHEDULE NOTE: ALL SELECTED SPECIES TAKEN FROM THE MIAMI-DADE COUNTY LANDSCAPE MANUAL

| TREE TYPE | QTY | COMMON NAME | SCIENTIFIC NAME | HEIGHT | TREE SIZE | TREE TYPE |
|-----------------------------------|-----|--------------------------|------------------------------|--------|-----------|------------|
| STREET TREES | 2 | Crape Myrtle | <i>Lagerstromea indica</i> | 12' | Small | Flowering |
| | 1 | PonyTail Palm | <i>Beaucamea recurvata</i> | 12' | Medium | Shade |
| REMOVED COCONUT PALM REPLACEMENTS | 2 | Jacaranda | <i>Jacaranda mimosifolia</i> | 12' | Large | Flowering |
| | 3 | Japanese Fern | <i>Filicium decipiens</i> | 12' | Medium | Shade |
| | 2 | Emerald Green Arborvitae | <i>Thuja occidentalis</i> | 12' | Medium | Ornamental |
| ADDITIONAL PROPOSED TREES | 2 | Traveler's Palm | <i>Ravenala madagascar</i> | 12' | Medium | Flowering |



Proposed Landscape Plan