

Exhibit B
MSW Presentation at FERC May 27, 2022 Meeting

Solid Waste Hauler Commercial Franchise Hauler Presentation

MIAMIBEACH
RISING
ABOVE

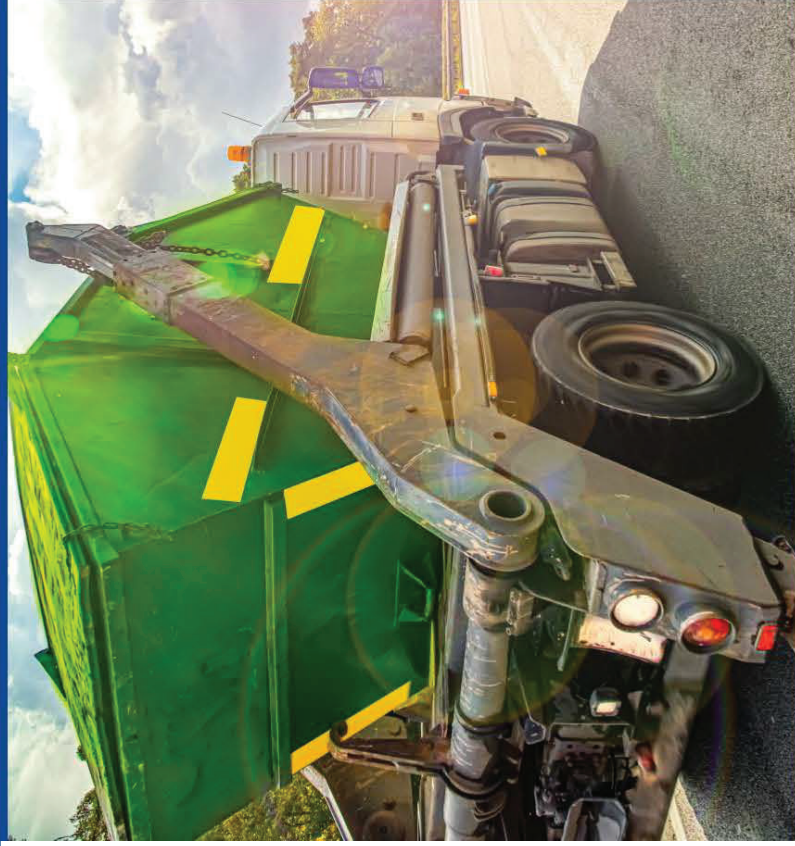
Update
to

April 29, 2022, FERC Meeting

Takeaways from the Last Presentation

- *Low Response to the On-Line Survey*
- *Only 15 Responses Received*
- *Limited Municipality Data Sampling Reviewed*
- *13 Municipalities*

Solid Waste Forum *In-Person Public Meeting*



Join the City of Miami Beach for a solid waste forum to discuss our commercial franchise waste hauler services for larger condominium, apartment buildings and businesses. Staff will be present to answer questions and collect input using a customer service survey.

Thursday, June 23, 2022 from 6 PM to 7:30 PM
Miami Beach Golf Clubhouse
2301 Alton Road

For more information, please contact Kevin Pulido at kevinpulido@miamibeachfl.gov

MIAMIBEACH

www.miamibeachfl.gov

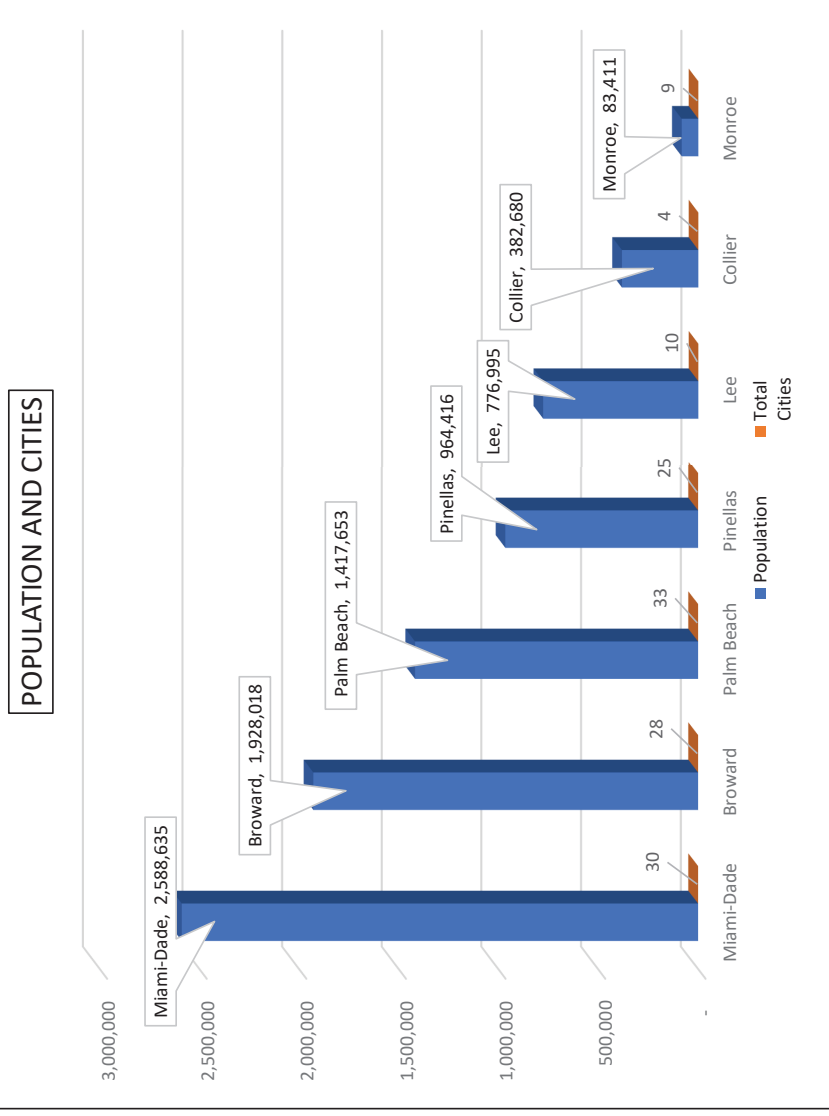
To request this material in alternate format, sign language interpreter (five-day notice required), information on access for persons with disabilities, and/or any accommodation to review any document or participate in any city-sponsored proceedings, call 305.604.2489 and select 1 for English or 2 for Spanish, then option 6; TTY users may call via 711 (Florida Relay Service).

Thirteen Municipalities Were Reviewed

City	County	Population	Form of Regulation
Boca Raton	Palm Beach	97,422	Non-Exclusive Franchise
Coral Gables	Miami-Dade	49,248	Exclusive Franchise
Coral Springs	Broward	134,394	Exclusive Franchise
Davie	Broward	105,691	Exclusive Franchise
Delray Beach	Palm Beach	66,846	Exclusive Franchise
Hialeah	Miami-Dade	223,109	Open Market
Miami	Miami-Dade	442,241	Open Market
Miami Beach	Miami-Dade	82,890	Non-Exclusive Franchise
North Miami	Miami-Dade	60,191	Exclusive Franchise
North Miami Beach	Miami-Dade	43,676	Exclusive Franchise
Pompano Beach	Broward	112,046	Exclusive Franchise
Sunrise	Broward	97,335	Exclusive Franchise
Tamarac	Broward	71,897	Exclusive Franchise
West Palm Beach	Palm Beach	117,415	Non-Exclusive Franchise

Population by county for the cities reviewed

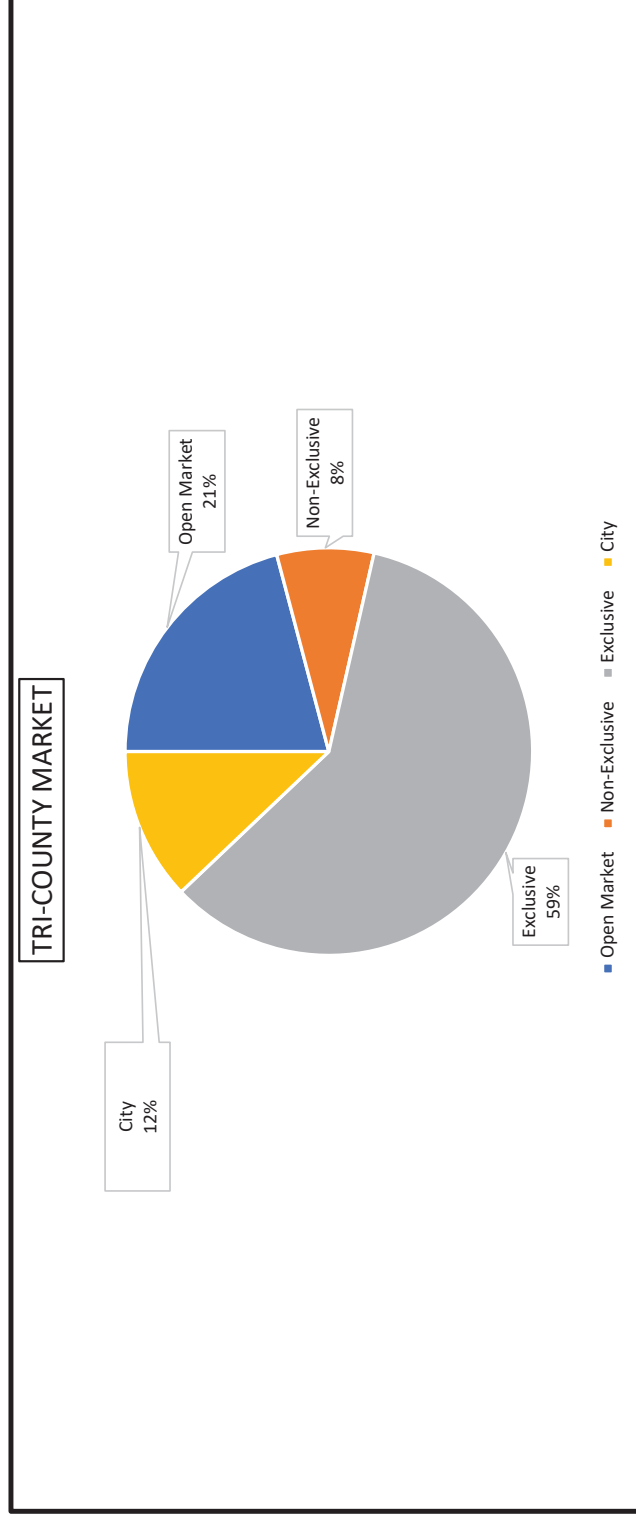
- **91 Municipalities in Tri-County Area**
- **48 Municipalities in Four Additional Counties**
- **Total of 139 Municipalities Reviewed**



Number of Cities Reviewed

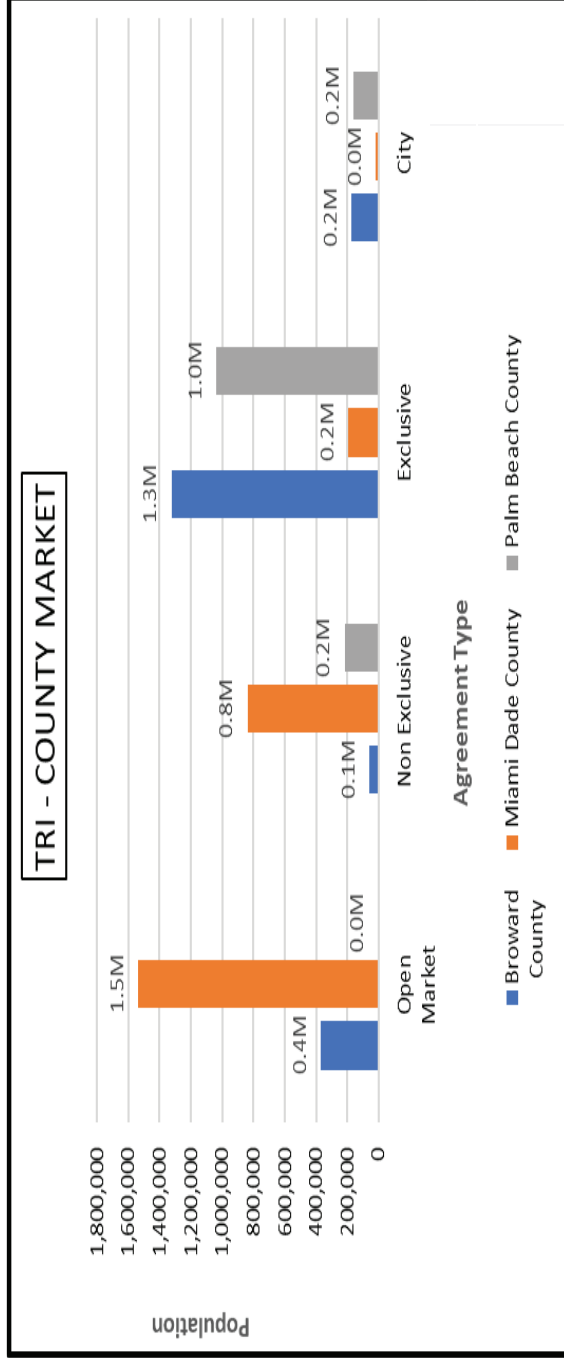
<i>Cities Reviewed</i>						
County	Population	Total Cities	Open Market	Non Exclusive	Exclusive	City
<i>Miami-Dade</i>	2,588,635	30	15	4	8	3
<i>Broward</i>	1,928,018	28	3	1	21	3
<i>Palm Beach</i>	1,417,653	33	1	2	25	5
<i>Pinellas</i>	964,416	25	3	0	12	10
<i>Lee</i>	776,995	10	0	0	9	1
<i>Collier</i>	382,680	4	0	0	3	1
<i>Monroe</i>	83,411	9	0	0	9	0
Totals	8,141,808	139	22	7	87	23
			16%	5%	63%	17%

Tri-County Market By Percentage



County	Open Market	Non-Exclusive	Exclusive	City	Total Cities
Tri Counties	19 21%	7 8%	54 59%	11 12%	91 100%

Tri-County Market By Population



	Broward County	Miami Dade County	Palm Beach County	Total Tri-County
Open Market	371,767	1,535,985	2,142	1,909,894
Non Exclusive	58,714	838,728	217,301	1,114,743
Exclusive	1,324,978	195,826	1,035,528	2,556,332
City	172,559	18,096	162,682	353,337
Total Population	1,928,018	2,588,635	1,417,653	5,934,306

Miami-Dade County

County	City Names	Open Market	Non Exclusive	Exclusive Franchise	City
MIAMI - DADE COUNTY	Unincorporated	1,197,784			
	Bal Harbour			3,084	
	Biscayne Park	3,119			
	Coral Gables	45,478		50,193	
	Cutler Bay				
	Doral		80,703		
	Golden Beach				955
	Hialeah				
	Hialeah Gardens		225,493		
	Indian Creek			23,055	
	Key Biscayne	14,815		84	
	Medley	1,047			
	Miami		449,747		
	Miami Beach		82,785		
	Miami Gardens	112,508			
	Miami Lakes	30,857			
	Miami Shores				11,548
	Miami Springs	13,851			
	North Bay Village			8,211	
	North Miami			60,175	
	North Miami Beach			43,749	
	Opa-locka	16,570			
	Palmetto Bay	24,499			
	Pinecrest	18,419			
	South Miami	12,071			
	Sunny Isles Beach	22,655			
	Surfside				5,593
Sweetwater	19,941				
Virginia Gardens	2,371				
West Miami			7,275		
Total Service by Population		1,535,985	838,728	195,826	18,096
Total # of Cities		15	4	8	3

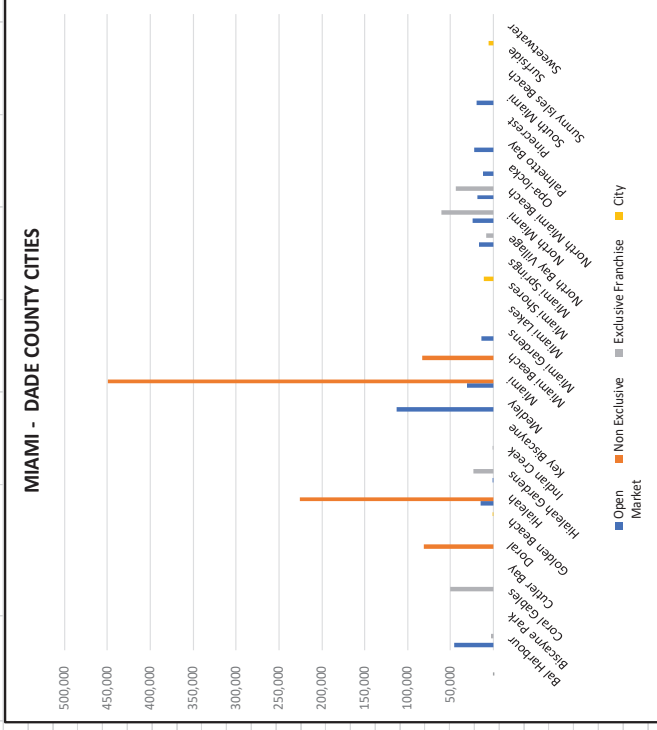
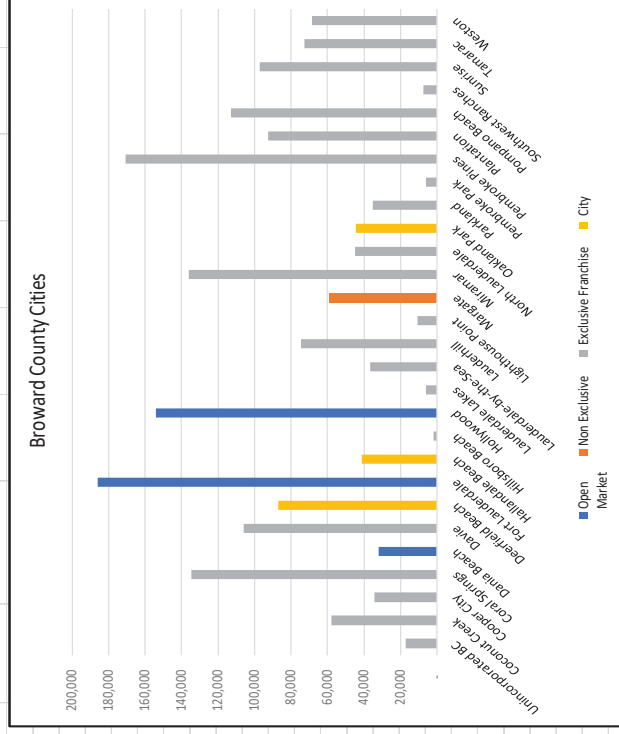


Chart excludes unincorporated Miami - Dade County which has a population of 1,197,184 and is open market.

Broward County

County	City Names	Open Market	Non Exclusive	Exclusive Franchise	City
BROWARD COUNTY	Unincorporated BC			17,079	
	Coconut Creek			57,871	
	Cooper City			34,397	
	Coral Springs			134,558	
	Dania Beach	31,837			
	Davie			106,199	
	Deerfield Beach				87,106
	Fort Lauderdale	186,076			
	Hallandale Beach				41,157
	Hillsboro Beach			1,986	
	Hollywood	153,854			
	Lauderdale Lakes			6,203	
	Lauderdale-by-the-Sea			36,647	
	Lauderhill			74,538	
	Lighthouse Point			10,499	
	Margate		58,714		
	Miramar			136,007	
	North Lauderdale			44,855	
	Oakland Park				44,296
	Parkland			35,440	
	Pembroke Park			6,222	
	Pembroke Pines			170,857	
	Plantation			92,628	
Pompano Beach			113,144		
Southwest Ranches			7,675		
Sunrise			97,359		
Tamarac			72,509		
Weston			68,305		
Total Service by Population		371,767	58,714	1,324,978	172,559
Total # of Cities		3	1	21	3
					28



Palm Beach County

County	City Names	Open Market	Non Exclusive	Exclusive Franchise	City
	SWA Zone 1 - 6			653,174	
	Belle Glade				16,893
	Boca Raton		98,046		
	Boynton Beach				81,011
	Delray Beach			66,948	
	Greenacres			44,549	
	Gulf Stream			949	
	Haverhill			2,193	
	Highland Beach			4,300	
	Juno Beach			3,862	
	Jupiter			61,121	
	Lake Clarke Shores			3,562	
	Lake Park				9,039
	Lake Worth Beach				42,572
	Loxahatchee Groves			3,379	
	Mangonia Park	2,142			
	North Palm Beach				13,167
	Ocean Ridge			1,828	
	Pahokee			5,580	
	Palm Beach			9,253	
	Palm Beach Gardens			59,755	
	Palm Beach Shores			1,330	
	Royal Palm Beach			39,144	
	South Bay			4,924	
	Tequesta			6,152	
	Wellington			61,768	
	West Palm Beach		119,255		
	Westlake			1,757	
	Total Service by Population	2,142	217,301	1,035,528	162,682
	Total # of Cities	1	2	25	5
					33

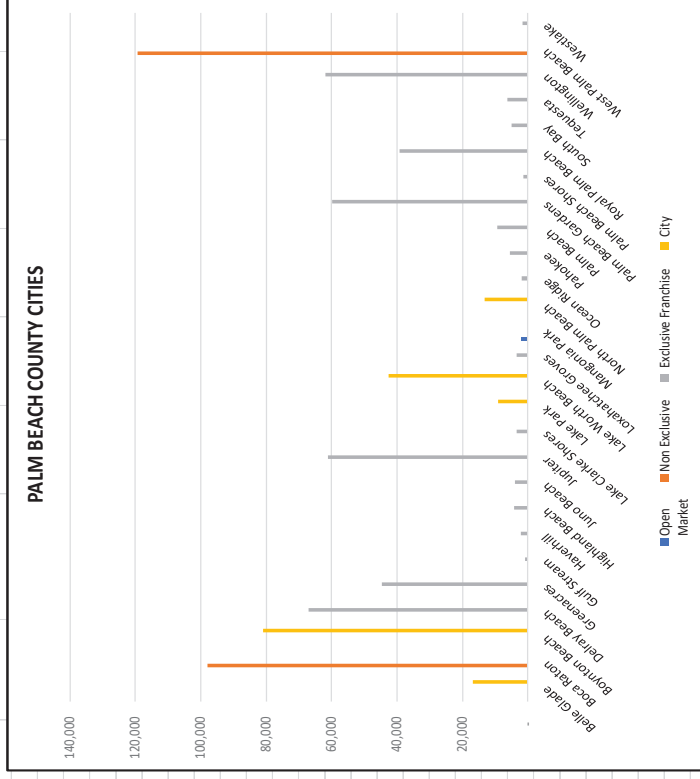
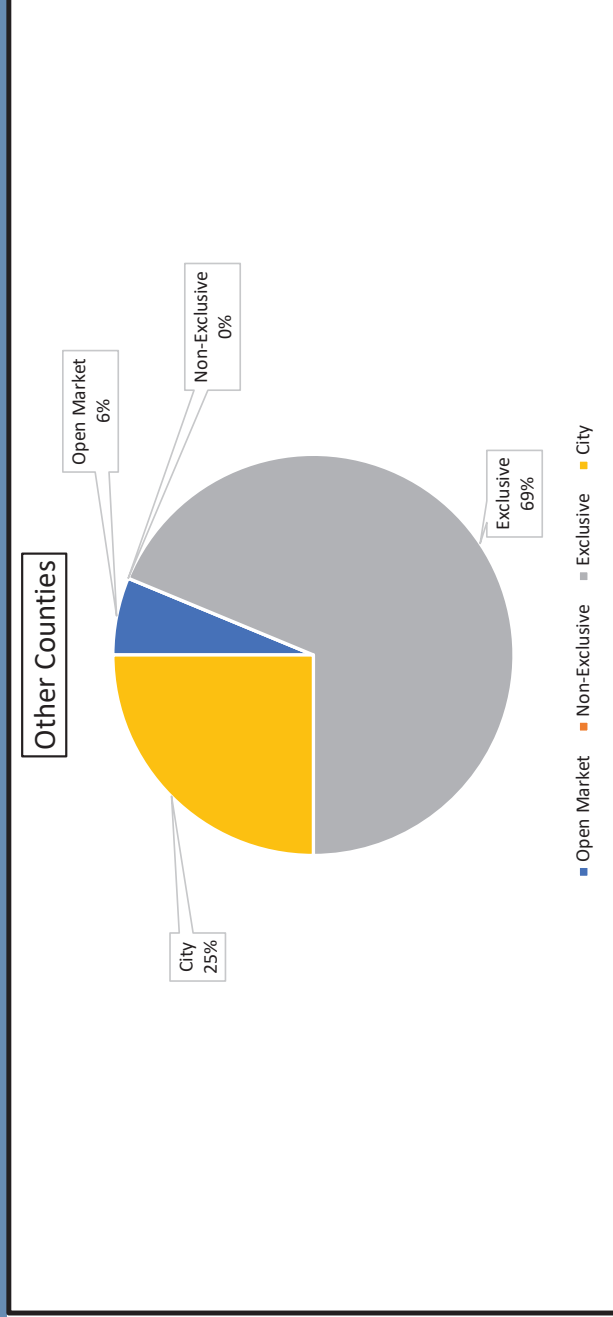


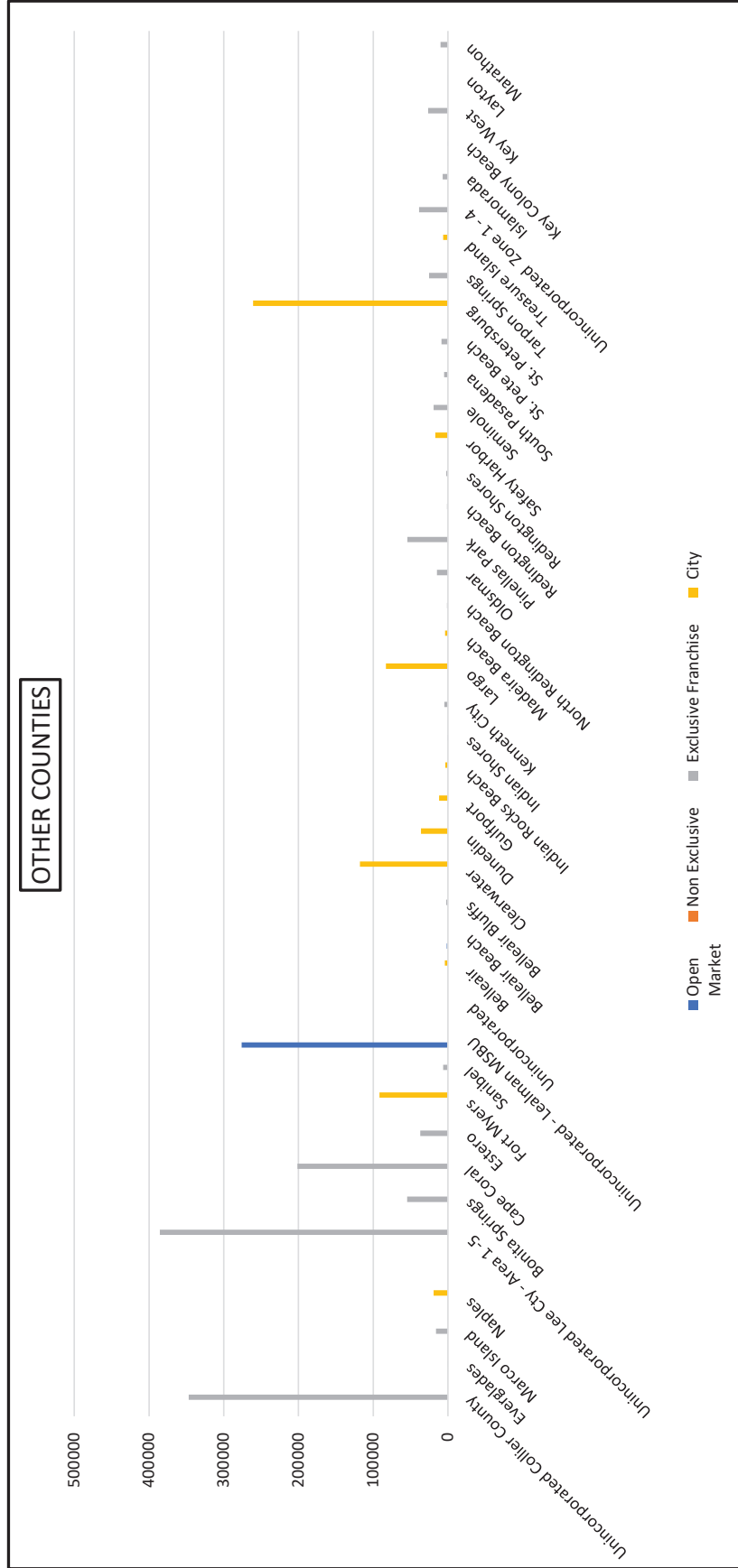
Chart excludes SWA ("Solid Waste Authority") zones 1-6 which has a population of 653,174 and is exclusive franchise.

Other Florida Counties By Percentages




County	Population	# of Cities	Open Mkt	Exclusive	City
Pinellas	964,416	25	3	12	10
Lee	776,995	10	0	9	1
Collier	382,680	4	0	3	1
Monroe	83,411	9	0	9	0
Totals	2,207,502	48	3	33	12
		100%	6%	69%	25%

Other Florida Counties By Population



Summary of Haulers with Exclusive Franchises

HAULERS FOR CITIES WITH EXCLUSIVE FRANCHISES												
County	Exclusive	Advanced Disposals	Coastal Waste	FCC Environmental	Goode Company	Keys Sanitary	Marathon Garbage Service	Southern Waste	Republic Services	Waste Connection	Waste Mgmt	Waste Pro
Miami - Dade	8									3	4	1
Broward	21		2						3		10	6
Palm Beach	25	1	1	3	1			1			13	5
Pinellas	12								1	7	4	
Lee	9	1									3	5
Collier	3										3	
Monroe	9	1				1	4				3	
Totals	87	3	3	3	1	1	4	1	4	10	40	17
% of	63%	3%	3%	3%	1%	1%	5%	1%	5%	11%	46%	20%

An aerial photograph of Miami, Florida, showing a dense urban landscape with numerous high-rise buildings, parking lots, and streets. The city extends to the waterfront, where a large body of water is visible with several bridges and industrial structures in the distance. The sky is clear and blue.

MIAMIBEACH
RISING
ABOVE

Thank you