

SHEET INDEX

SHEET #	SHEET TITLE				
L-0.00	COVER SHEET				
L-0.00A	SITE TABULATIONS				
L-0.01	VEGETATION SURVEY				
L-0.02	VEGETATION TREE LIST				
L-0.13	SITE STRATEGY PLAN				
L-1.01	OVERALL HARDSCAPE PLAN				
L-1.01A	ENLARGED HARDSCAPE PLAN				
L-1.02	RENDERED SITE PLAN				
L-1.03	RENDERINGS				
L-1.04	RENDERINGS				
L-1.05	RENDERINGS				
L-1.06	RENDERINGS				
L-2.04	ELEVATION				
L-2.04A	SECTIONS				
L-2.05	SECTIONS				
L-2.06	SECTIONS				
L-2.07	MATERIALS LEGEND				
L-2.08	INSPIRATION IMAGES				
L-2.09	INSPIRATION IMAGES				
L-3.00	OVERALL TREE DISPOSITION PLAN				
L-3.01	TREE DISPOSITION LIST				
L-3.10	OVERALL LANDSCAPE PLAN				
L-3.11	OVERALL LANDSCAPE PLANT LIST				
L-3.20	LANDSCAPE REFERENCE IMAGES				
L-3.30	GENERAL PLANTING DETAILS				
L-4.10	OVERALL LANDSCAPE LIGHTING PLAN				
L-5.10	OVERALL IRRIGATION PLAN				

GRAPHIC LEGEND

GENERAL ABBREVIATIONS

TW	TOP OF WALL	OA	OVERALL PLAN
TPW	TOP OF PLANTER WALL	CONC	CONCRETE
TB	TOP OF BENCH	LA	LANDSCAPE ARCHITECT
TC	TOP OF CURB	ARCH	ARCHITECT
FFE	FINISH FLOOR ELEVATION	STRUCT	STRUCTURE / STRUCTURAL
AFF	ABOVE FINISH FLOOR	ENG	ENGINEER
P.L.	PROPERTY LINE	DWGS	DRAWINGS
TG	TOP OF GRADE	TYP	TYPICAL
M	MONUMENT LINE	EXST	EXISTING
CL	CENTER LINE	HSCP	HARDSCAPE
ML	MATCH LINE	LSCP	LANDSCAPE
EL	ENLARGED PLAN	PLNT	PLANTING

HPB SUBMITTAL



NATURALFICIAL

6915 Red Rd Suite 224, Coral Gables, FL 33143
T 786.717.6564

THIS ITEM HAS BEEN DIGITALLY SIGNED
AND SEALED BY PETER ANSELMO ON 04.17.2023

LINCOLN ROAD 100 BLOCK
MIAMI BEACH, FL 33139

COVER SHEET

SCALE: NTS

DATE:
11/06/2023

L-0.00

CITY OF MIAMI BEACH
LANDSCAPE LEGEND

INFORMATION REQUIRED TO BE PERMANENTLY AFFIXED TO PLANS

Zoning District **RM-3** Lot Area **48,708 SF** Acres **1.11**

OPEN SPACE

	REQUIRED/ ALLOWED	PROVIDED
A. Square feet of required Open Space as indicated on site plan: <i>48,708 sq. ft. x 30%</i>	14,612 SF Required	48,708 SF
B. Square feet of parking lot open space required as indicated on site plan: <i>Number of parking spaces n/a x 10 s.f. parking space =</i>	n/a	n/a
C. Total square feet of landscaped open space required: A+B=	14,612 SF Required	48,708 SF

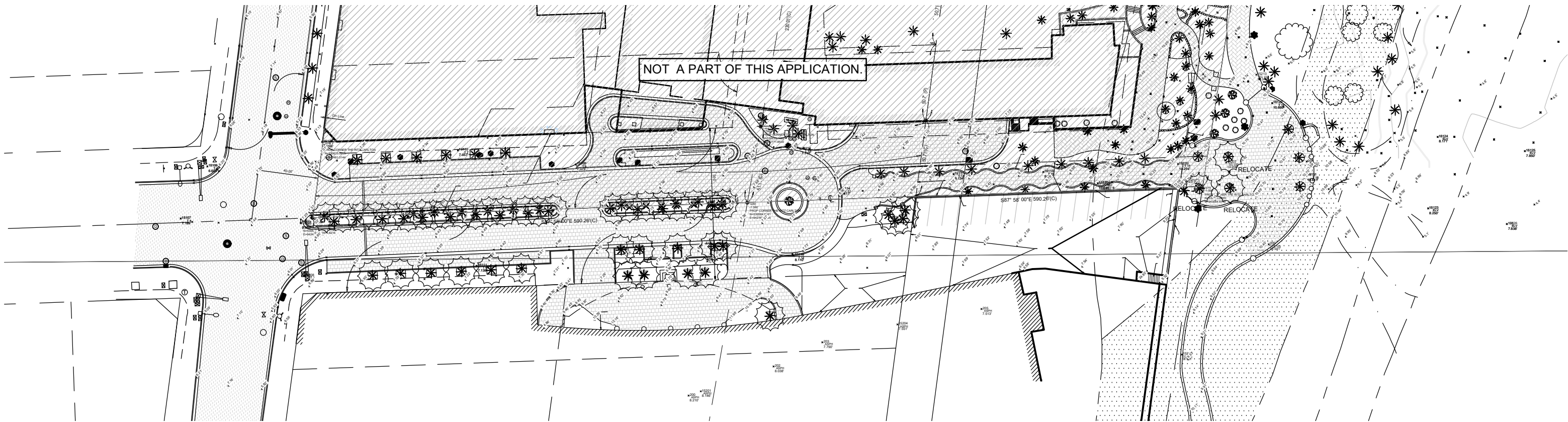
LAWN AREA CALCULATION

A. Square feet of landscaped open space required	14,612 SF Required	16,063 SF
B. Maximum lawn area (sod) permitted= <i>30% x 14,612 SF</i>	4,383 SF Allowed	1,053 SF
A. Number of trees required per lot or net lot acre, less existing number of trees meeting minimum requirements: <i>(28) trees required per acre - (0) existing trees =</i>	N/A Public ROW Improvement	43 Trees, 7 Palms (Additionally 22 Relocated Palms)
B. % Natives required: <i>(30) Number of trees provided x 30% =</i>	N/A	43
C. % Low maintenance / drought and salt tolerant required: <i>(30) Number of trees provided x 50%=</i>	N/A	43
D. Street Trees (maximum average spacing of 20' o.c.): <i>347' linear feet along street divided by 20'=</i>	N/A	0
E. Street tree species allowed directly beneath power lines: <i>(maximum average spacing of 20' o.c.):</i> <i>n/a linear feet along street divided by 20'=</i>	N/A	n/a

SHRUBS

A. Number of shrubs required: <i>(30) Sum of lot trees required x 12=</i>	N/A	TBD
B. % Native shrubs required: <i>(360) Number of shrubs provided x 50%=</i>	N/A	TBD
LARGE SHRUBS OR SMALL TREES		
A. Number of large shrubs or small trees required: <i>(360) Number of required shrubs x 10%=</i>	N/A	TBD
B. % Native large shrubs or small trees required: <i>(36) Number of large shrubs or small trees provided x 50%=</i>	N/A	TBD





NOT A PART OF THIS APPLICATION.

NOTE: TREES SHOWN OUTSIDE OF THE AREA OF SCOPE ARE SHOWN FOR REFERENCE ONLY.

NOTE: SURVEY PERFORMED BY OTHERS. NFI NOT RESPONSIBLE FOR INACCURATE INFORMATION ON THIS PLAN OR SUBSEQUENT CORRESPONDING PLANS.

NOTE: SURVEYOR TREE LIST LOCATED ON SHEET L-0.02.

HPB SUBMITTAL



NATURALFICIAL

6915 Red Rd Suite 224, Coral Gables, FL 33143
T 786.717.6564

THIS ITEM HAS BEEN DIGITALLY SIGNED
AND SEALED BY PETER ANSELMO ON 04.17.2023

LINCOLN ROAD 100 BLOCK
MIAMI BEACH, FL 33139

VEGETATION SURVEY

SCALE: 1/64" = 1'-0"

DATE:
11/06/2023

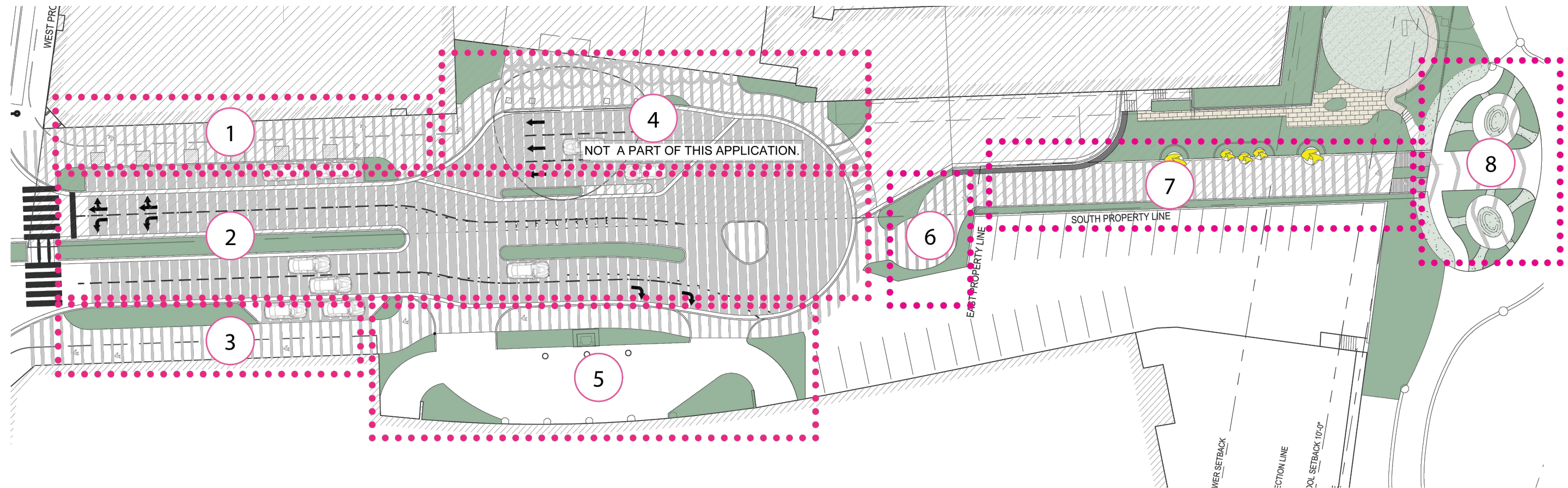
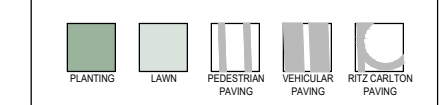
L-0.01

KEY #	ABRV.	BOTANICAL NAME	COMMON NAME	SIZE		
				DBH (IN.)	HT. (FT.)	SPD. (FT.)
8	CNU	<i>Cocos nucifera</i>	Coconut Palm	8.4	30	20
9	CNU	<i>Cocos nucifera</i>	Coconut Palm	8.4	30	20
10	CNU	<i>Cocos nucifera</i>	Coconut Palm	8.4	30	20
11	CNU	<i>Cocos nucifera</i>	Coconut Palm	8.4	30	20
12	CNU	<i>Cocos nucifera</i>	Coconut Palm	8.4	25	20
13	CNU	<i>Cocos nucifera</i>	Coconut Palm	8.4	20	20
14	CNU	<i>Cocos nucifera</i>	Coconut Palm	8.4	22	20
15	CNU	<i>Cocos nucifera</i>	Coconut Palm	8.4	22	20
16	CNU	<i>Cocos nucifera</i>	Coconut Palm	8.4	22	20
17	CNU	<i>Cocos nucifera</i>	Coconut Palm	7.2	18	20
18	CNU	<i>Cocos nucifera</i>	Coconut Palm	7.2	20	20
19	CNU	<i>Cocos nucifera</i>	Coconut Palm	7.2	20	20
20	CNU	<i>Cocos nucifera</i>	Coconut Palm	7.2	20	20
21	CNU	<i>Cocos nucifera</i>	Coconut Palm	7.2	18	20
22	CNU	<i>Cocos nucifera</i>	Coconut Palm	7.2	20	20
23	CNU	<i>Cocos nucifera</i>	Coconut Palm	8.4	22	20
24	CNU	<i>Cocos nucifera</i>	Coconut Palm	8.4	22	20
25	CNU	<i>Cocos nucifera</i>	Coconut Palm	8.4	22	20
26	CNU	<i>Cocos nucifera</i>	Coconut Palm	8.4	22	20
27	CNU	<i>Cocos nucifera</i>	Coconut Palm	8.4	22	20
28	CNU	<i>Cocos nucifera</i>	Coconut Palm	8.4	22	20
29	PCA	<i>Phoenix canariensis</i>	Canary Island Date Palm	15.6	22	20
30	PCA	<i>Phoenix canariensis</i>	Canary Island Date Palm	15.6	22	20
31	PCA	<i>Phoenix canariensis</i>	Canary Island Date Palm	15.6	22	20
32	PCA	<i>Phoenix canariensis</i>	Canary Island Date Palm	15.6	22	20
33	PCA	<i>Phoenix canariensis</i>	Canary Island Date Palm	15.6	22	20
34	PCA	<i>Phoenix canariensis</i>	Canary Island Date Palm	15.6	22	20
35	CNU	<i>Cocos nucifera</i>	Coconut Palm	7.2	30	20
36	CNU	<i>Cocos nucifera</i>	Coconut Palm	7.2	25	20
37	CNU	<i>Cocos nucifera</i>	Coconut Palm	7.2	25	20
38	CNU	<i>Cocos nucifera</i>	Coconut Palm	7.2	20	20
39	CNU	<i>Cocos nucifera</i>	Coconut Palm	7.2	20	20
40	CNU	<i>Cocos nucifera</i>	Coconut Palm	7.2	22	20
41	CNU	<i>Cocos nucifera</i>	Coconut Palm	7.2	18	20
42	CNU	<i>Cocos nucifera</i>	Coconut Palm	8.4	20	20
43	CNU	<i>Cocos nucifera</i>	Coconut Palm	7.2	25	20
44	CNU	<i>Cocos nucifera</i>	Coconut Palm	7.2	25	20
45	CNU	<i>Cocos nucifera</i>	Coconut Palm	7.2	18	20
46	CNU	<i>Cocos nucifera</i>	Coconut Palm	7.2	25	20
47	PCA	<i>Phoenix canariensis</i>	Canary Island Date Palm	23	22	20
48	PCA	<i>Phoenix canariensis</i>	Canary Island Date Palm	23	22	20
49	PCA	<i>Phoenix canariensis</i>	Canary Island Date Palm	23	22	20
50	PCA	<i>Phoenix canariensis</i>	Canary Island Date Palm	14	25	20
51	PCA	<i>Phoenix canariensis</i>	Canary Island Date Palm	14	25	20
52	PCA	<i>Phoenix canariensis</i>	Canary Island Date Palm	14	25	20
53	PCA	<i>Phoenix canariensis</i>	Canary Island Date Palm	14	25	20
54	PCA	<i>Phoenix canariensis</i>	Canary Island Date Palm	14	25	20
55	PCA	<i>Phoenix canariensis</i>	Canary Island Date Palm	14	25	20
56	PCA	<i>Phoenix canariensis</i>	Canary Island Date Palm	14	25	20
57	PCA	<i>Phoenix canariensis</i>	Canary Island Date Palm	14	25	20
58	PCA	<i>Phoenix canariensis</i>	Canary Island Date Palm	14	25	20
59	PCA	<i>Phoenix canariensis</i>	Canary Island Date Palm	14	25	20
60	PCA	<i>Phoenix canariensis</i>	Canary Island Date Palm	14	25	20
61	PCA	<i>Phoenix canariensis</i>	Canary Island Date Palm	14	25	20
62	PCA	<i>Phoenix canariensis</i>	Canary Island Date Palm	14	25	20
63	PCA	<i>Phoenix canariensis</i>	Canary Island Date Palm	14	25	20
93	PCA	<i>Phoenix canariensis</i>	Canary Island Date Palm			
94	PCA	<i>Phoenix canariensis</i>	Canary Island Date Palm			
95	PCA	<i>Phoenix canariensis</i>	Canary Island Date Palm			
96	PCA	<i>Phoenix canariensis</i>	Canary Island Date Palm			
97	PCA	<i>Phoenix canariensis</i>	Canary Island Date Palm			
98	PCA	<i>Phoenix canariensis</i>	Canary Island Date Palm			
99	CNU	<i>Cocos nucifera</i>	Coconut Palm			
100	CNU	<i>Cocos nucifera</i>	Coconut Palm			
101	CNU	<i>Cocos nucifera</i>	Coconut Palm			
102	CNU	<i>Cocos nucifera</i>	Coconut Palm			
103	CNU	<i>Cocos nucifera</i>	Coconut Palm			
104	PRO	<i>Phoenix roebelenii</i>	Pygmy Date Palm			
105	PRO	<i>Phoenix roebelenii</i>	Pygmy Date Palm			
106	PRO	<i>Phoenix roebelenii</i>	Pygmy Date Palm			
107	PRO	<i>Phoenix roebelenii</i>	Pygmy Date Palm			
108	CNU	<i>Cocos nucifera</i>	Coconut Palm			
109	CNU	<i>Cocos nucifera</i>	Coconut Palm			
110	CNU	<i>Cocos nucifera</i>	Coconut Palm			
111	CNU	<i>Cocos nucifera</i>	Coconut Palm			
112	UNK	<i>Unknown</i>				

NOTE: TREES SHOWN OUTSIDE OF THE AREA OF SCOPE ARE SHOWN FOR REFERENCE ONLY.



GRAPHIC LEGEND



- 1 PUBLIC SIDEWALK
- 2 ROAD + MEDIANS
- 3 ARTWALK
- 4 RITZ DROP-OFF
- 5 DECOPLAGE PUBLIC SIDEWALK
- 6 GATEWAY
- 7 BEACH ENTRY / ART WALL
- 8 BEACH PARK

HPB SUBMITTAL



NATURALFICIAL

6915 Red Rd Suite 224, Coral Gables, FL 33143
T 786.717.6564

THIS ITEM HAS BEEN DIGITALLY SIGNED
AND SEALED BY PETER ANSELMO ON 04.17.2023

LINCOLN ROAD 100 BLOCK
MIAMI BEACH, FL 33139

SITE STRATEGY PLAN

SCALE: 1/16" = 1'-0"

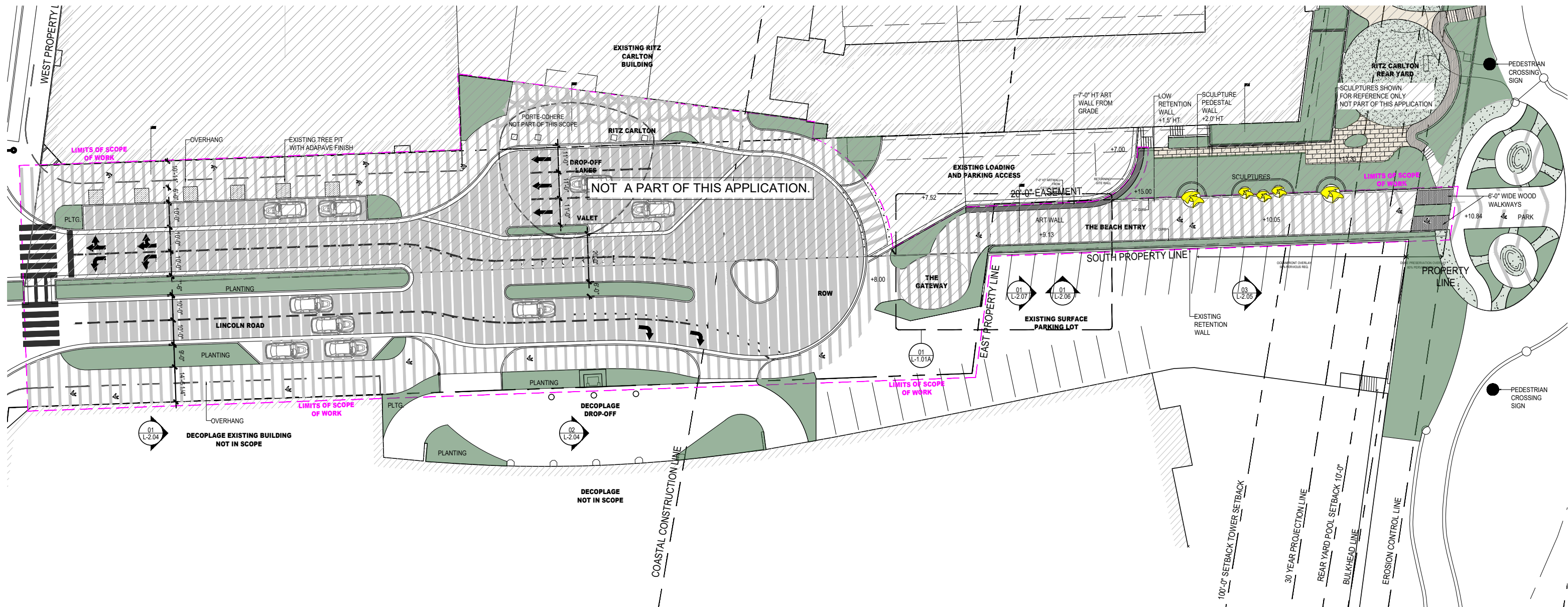
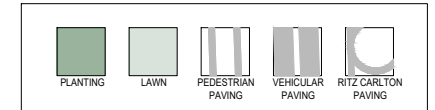
DATE:
11/06/2023

L-0.13

NOTE: ALL PEDESTRIAN PAVERS WITHIN THE UTILITY EASEMENT AND PUBLIC RIGHT OF WAY MUST BE SLIP RESISTANT

NOTE: DRIVEWAYS AND PARKING AREAS THAT ARE OPEN TO THE SKY WITHIN ANY REQUIRED YARD SHALL BE COMPOSED OF POROUS PAVEMENT OR SHALL HAVE A HIGH ALBEDO SURFACE CONSISTING OF A DURABLE MATERIAL OR SEALANT, AS DEFINED IN SECTION 114- 10F OF THIS CODE.

GRAPHIC LEGEND



HPB SUBMITTAL



NATURALFICIAL

6915 Red Rd Suite 224, Coral Gables, FL 33143
T 786.717.6564

THIS ITEM HAS BEEN DIGITALLY SIGNED
AND SEALED BY PETER ANSELMO ON 04.17.2023

LINCOLN ROAD 100 BLOCK
MIAMI BEACH, FL 33139

OVERALL HARDSCAPE PLAN

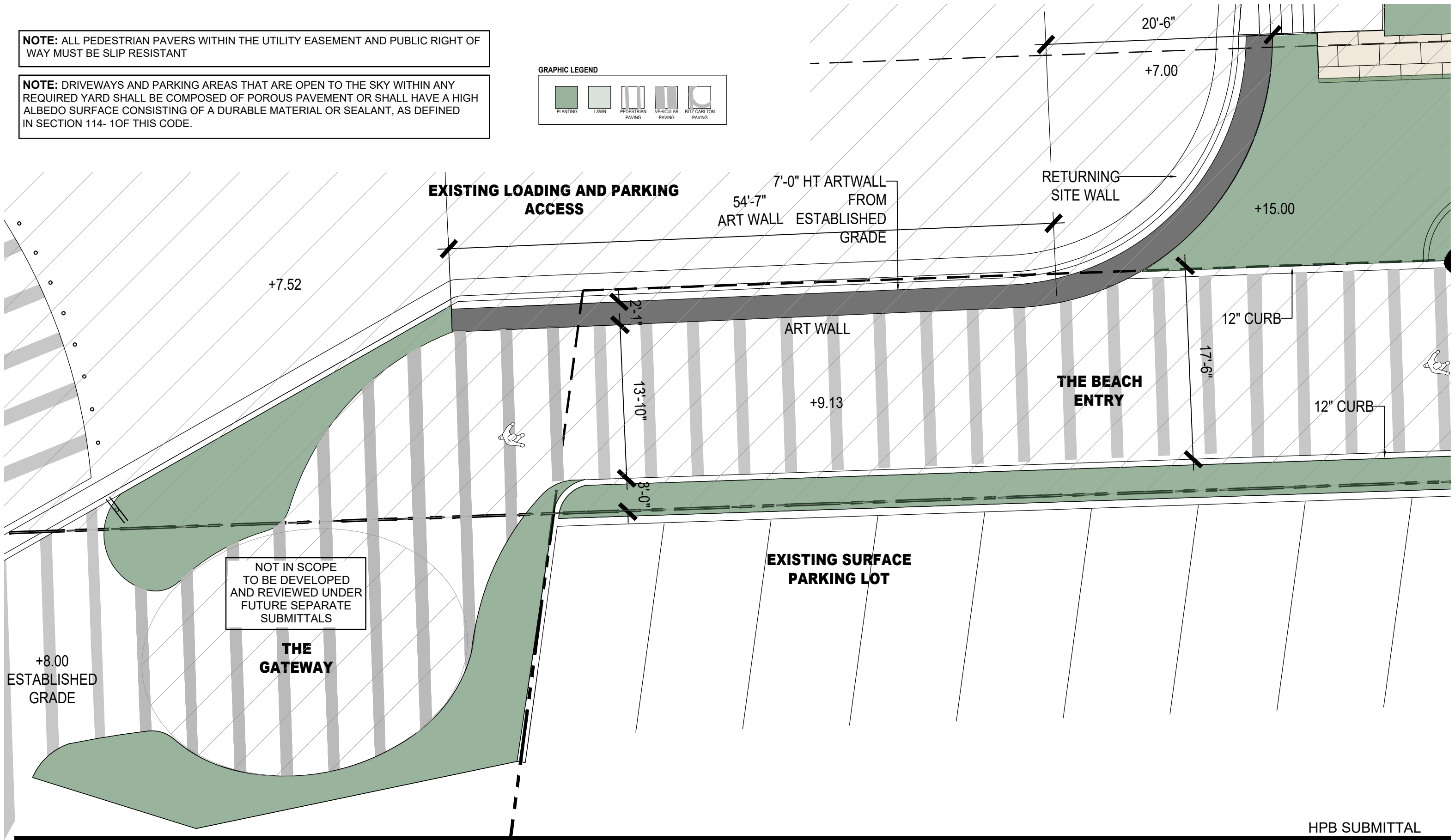
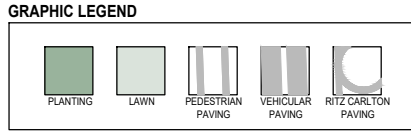
SCALE: 1/64" = 1'-0"

DATE:
11/06/2023

L-1.01

NOTE: ALL PEDESTRIAN PAVERS WITHIN THE UTILITY EASEMENT AND PUBLIC RIGHT OF WAY MUST BE SLIP RESISTANT

NOTE: DRIVEWAYS AND PARKING AREAS THAT ARE OPEN TO THE SKY WITHIN ANY REQUIRED YARD SHALL BE COMPOSED OF POROUS PAVEMENT OR SHALL HAVE A HIGH ALBEDO SURFACE CONSISTING OF A DURABLE MATERIAL OR SEALANT, AS DEFINED IN SECTION 114- 1OF THIS CODE.



HPB SUBMITTAL



NATURALFICIAL

6915 Red Rd Suite 224, Coral Gables, FL 33143
T 786.717.6564

THIS ITEM HAS BEEN DIGITALLY SIGNED AND SEALED BY PETER ANSELMO ON 04.17.2023

LINCOLN ROAD 100 BLOCK
MIAMI BEACH, FL 33139

ENLARGED FEATURE WALL PLAN

SCALE: 1/8" = 1'-0"

DATE:
11/06/2023

L-1.01A



NATURALFICIAL

6915 Red Rd Suite 224, Coral Gables, FL 33143
T 786.717.6564

THIS ITEM HAS BEEN DIGITALLY SIGNED
AND SEALED BY PETER ANSELMO ON 04.17.2023

LINCOLN ROAD 100 BLOCK
MIAMI BEACH, FL 33139

RENDERED SITE PLAN

SCALE: NTS

DATE:
11/06/2023

L-1.02



HPB SUBMITTAL



NATURALFICIAL

6915 Red Rd Suite 224, Coral Gables, FL 33143
T 786.717.6564

THIS ITEM HAS BEEN DIGITALLY SIGNED
AND SEALED BY PETER ANSELMO ON 04.17.2023

LINCOLN ROAD 100 BLOCK
MIAMI BEACH, FL 33139

RENDERINGS

SCALE: NTS

DATE:
11/06/2023

L-1.03



HPB SUBMITTAL



NATURALFICIAL

6915 Red Rd Suite 224, Coral Gables, FL 33143
T 786.717.6564

THIS ITEM HAS BEEN DIGITALLY SIGNED
AND SEALED BY PETER ANSELMO ON 04.17.2023

LINCOLN ROAD 100 BLOCK
MIAMI BEACH, FL 33139

RENDERINGS

SCALE: NTS

DATE:
11/06/2023

L-1.04



HPB SUBMITTAL



NATURALFICIAL

6915 Red Rd Suite 224, Coral Gables, FL 33143
T 786.717.6564

THIS ITEM HAS BEEN DIGITALLY SIGNED
AND SEALED BY PETER ANSELMO ON 04.17.2023

LINCOLN ROAD 100 BLOCK
MIAMI BEACH, FL 33139

RENDERINGS

SCALE: NTS

DATE:
11/06/2023

L-1.05



NATURALFICIAL

6915 Red Rd Suite 224, Coral Gables, FL 33143
T 786.717.6564

THIS ITEM HAS BEEN DIGITALLY SIGNED
AND SEALED BY PETER ANSELMO ON 04.17.2023

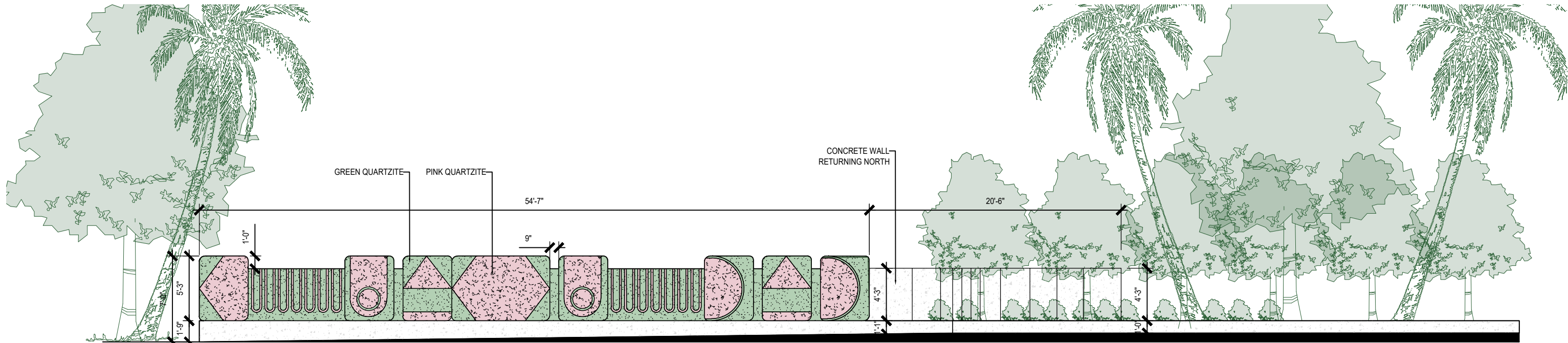
LINCOLN ROAD 100 BLOCK
MIAMI BEACH, FL 33139

RENDERINGS

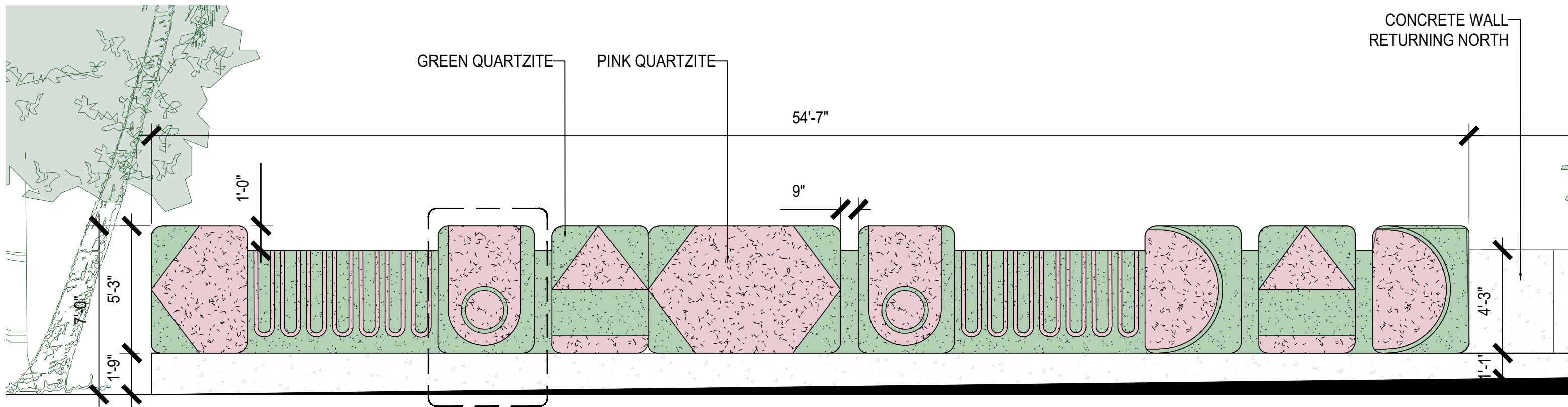
SCALE: NTS

DATE:
11/06/2023

L-1.06



01 ELEVATION
SCALE: 1/8" = 1'-0"



02 ELEVATION
SCALE: 1/4" = 1'-0"

01
L-2.04A

HPB SUBMITTAL



NATURALFICIAL

6915 Red Rd Suite 224, Coral Gables, FL 33143
T 786.717.6564

THIS ITEM HAS BEEN DIGITALLY SIGNED
AND SEALED BY PETER ANSELMO ON 04.17.2023

LINCOLN ROAD 100 BLOCK
MIAMI BEACH, FL 33139

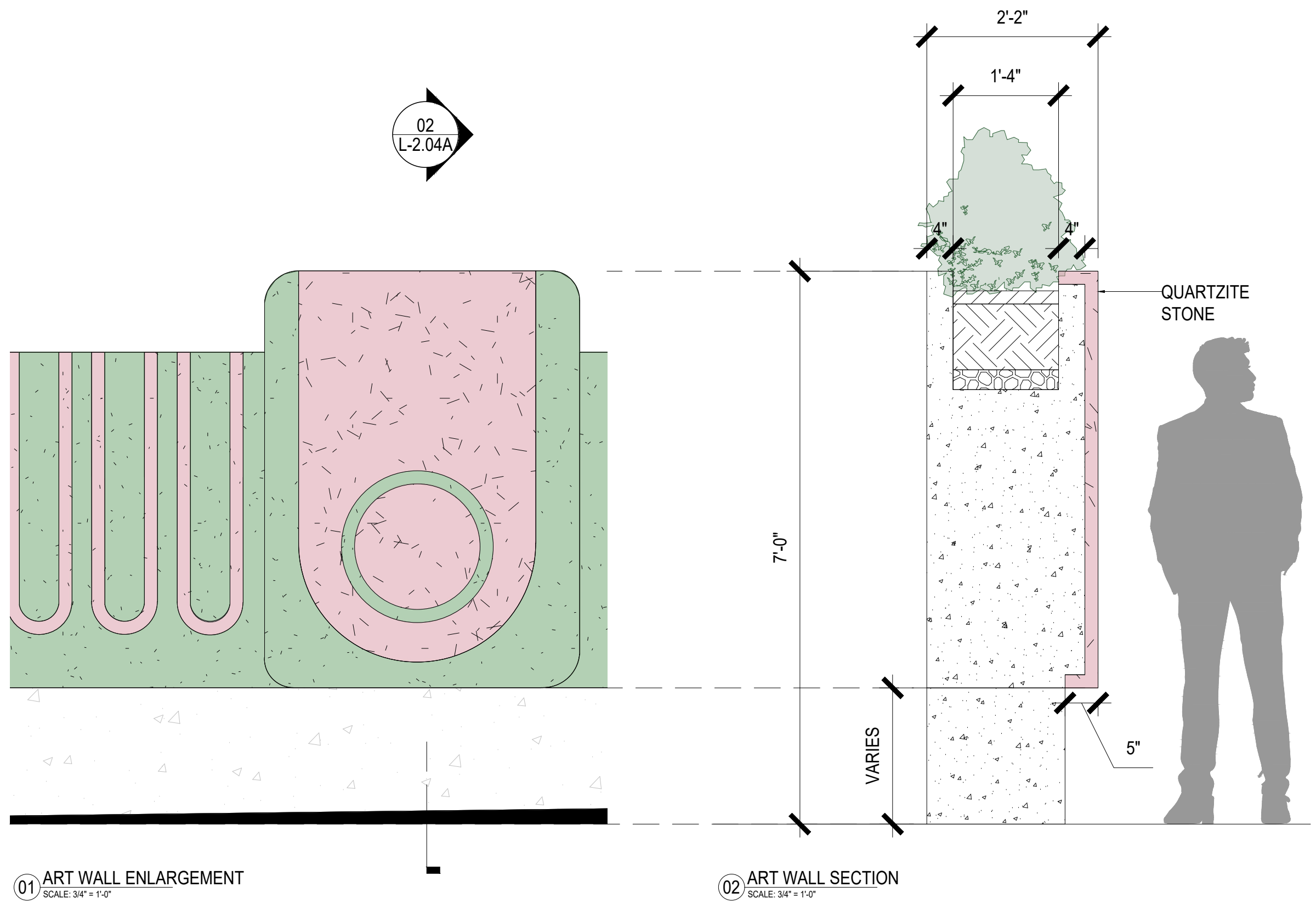
ELEVATION

SCALE: 1/8" = 1'-0"

DATE:
11/06/2023

L-2.04

02
L-2.04A



01 ART WALL ENLARGEMENT
SCALE: 3/4" = 1'-0"

02 ART WALL SECTION
SCALE: 3/4" = 1'-0"

HPB SUBMITTAL



NATURALFICIAL
6915 Red Rd Suite 224, Coral Gables, FL 33143
T 786.717.6564

THIS ITEM HAS BEEN DIGITALLY SIGNED
AND SEALED BY PETER ANSELMO ON 04.17.2023

LINCOLN ROAD 100 BLOCK
MIAMI BEACH, FL 33139

ELEVATION

SCALE: 1/8" = 1'-0"

DATE:
11/06/2023

L-2.04A



01 SECTION 01
SCALE: 1/16" = 1'-0"

SIDEWALK 16'-11" PARKING 10'-0" DOUBLE LANE 20'-0" MEDIAN 7'-6" DOUBLE LANE 20'-0" PLANTER 9'-0" SIDEWALK 14'-6"



02 SECTION 02
SCALE: 1/16" = 1'-0"

SIDEWALK 15'-0" RITZ DROP OFF 33'-0" MEDIAN 3'-0" DOUBLE LANE 20'-0" MEDIAN 6'-0" DOUBLE LANE 20'-0" SIDEWALK 10'-0" PLANTING 11'-10" DROP OFF 27'-6"

HPB SUBMITTAL



NATURALFICIAL

6915 Red Rd Suite 224, Coral Gables, FL 33143
T 786.717.6564

THIS ITEM HAS BEEN DIGITALLY SIGNED
AND SEALED BY PETER ANSELMO ON 04.17.2023

LINCOLN ROAD 100 BLOCK
MIAMI BEACH, FL 33139

SECTIONS

SCALE: 1/16" = 1'-0"

DATE:
11/06/2023

L-2.05



03 SECTION 03
SCALE: 1/16" = 1'-0"

TERRACE 4'-6" LOADING ZONE 33'-0" 7' HT. ART WALL 2'-0" WALKWAY 14'-0" BUFFER 3'-0" SURFACE PARKING LOT 63'-0"



NATURALFICIAL
6915 Red Rd Suite 224, Coral Gables, FL 33143
T 786.717.6564

THIS ITEM HAS BEEN DIGITALLY SIGNED
AND SEALED BY PETER ANSELMO ON 04.17.2023

LINCOLN ROAD 100 BLOCK
MIAMI BEACH, FL 33139

SECTIONS

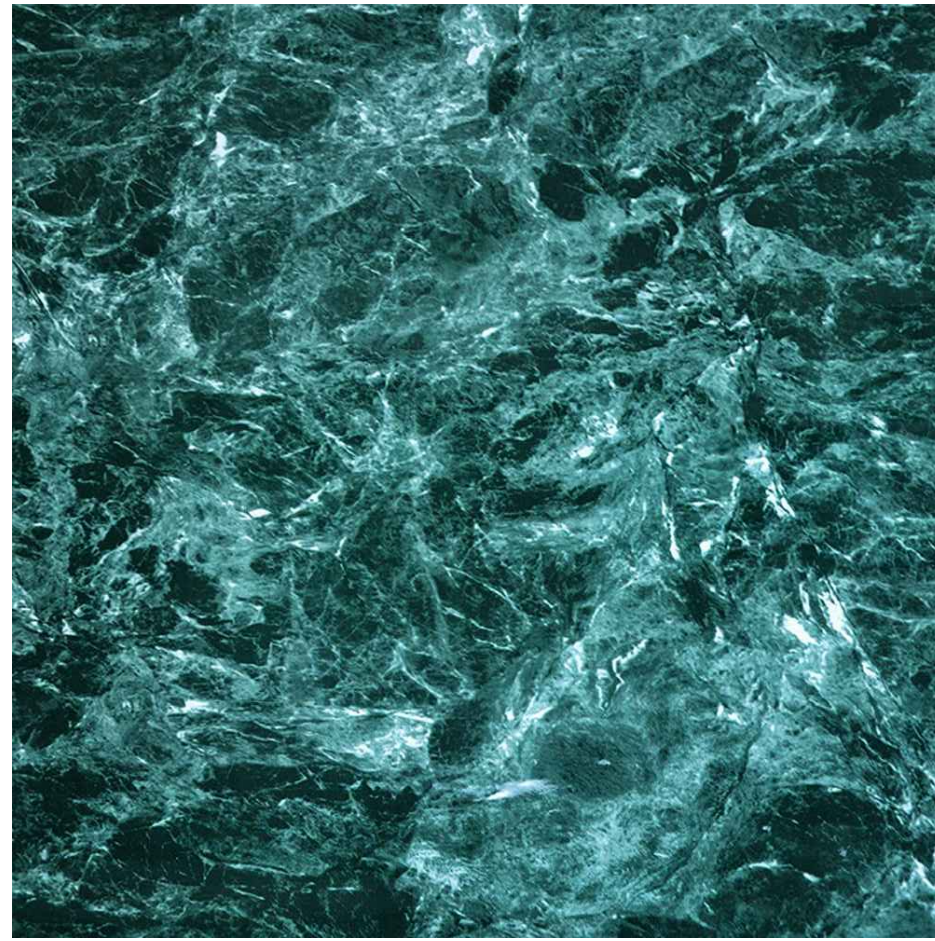
SCALE: 1/16" = 1'-0"

DATE:
11/06/2023

L-2.06



QUARTZITE - PINK



QUARTZITE- GREEN



SMOOTH CONCRETE



NATURALFICIAL

6915 Red Rd Suite 224, Coral Gables, FL 33143
T 786.717.6564

THIS ITEM HAS BEEN DIGITALLY SIGNED
AND SEALED BY PETER ANSELMO ON 04.17.2023

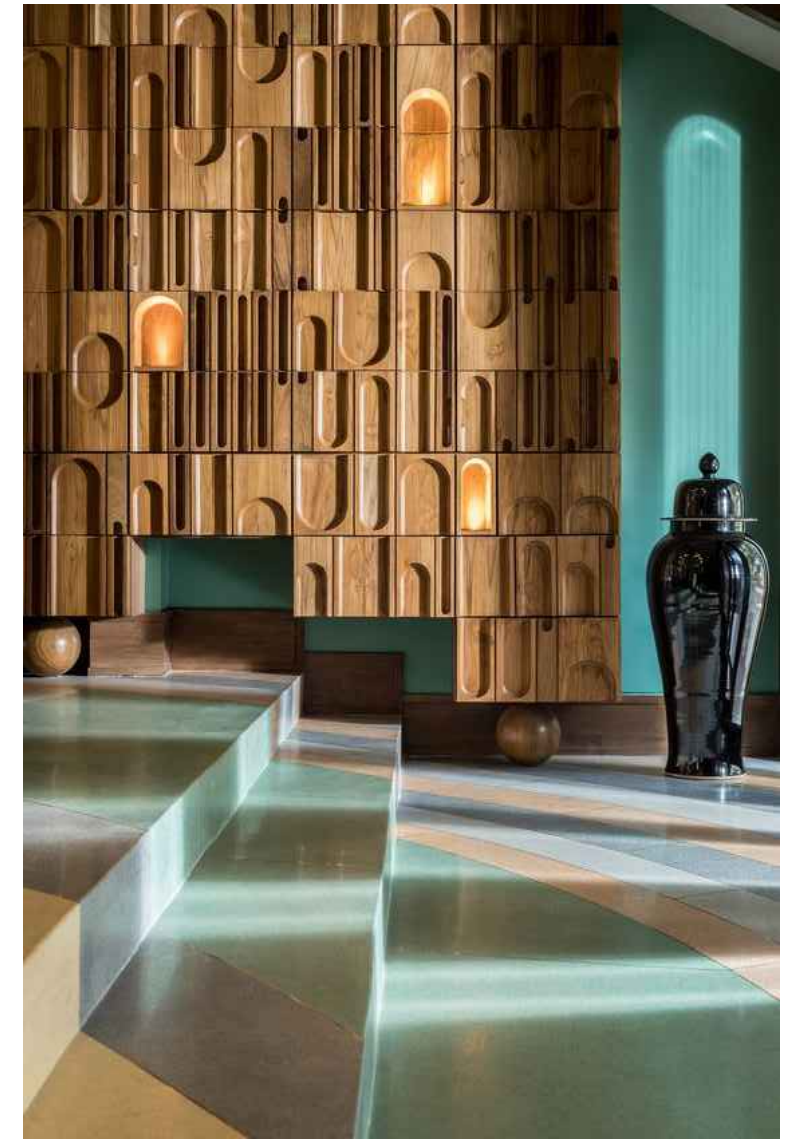
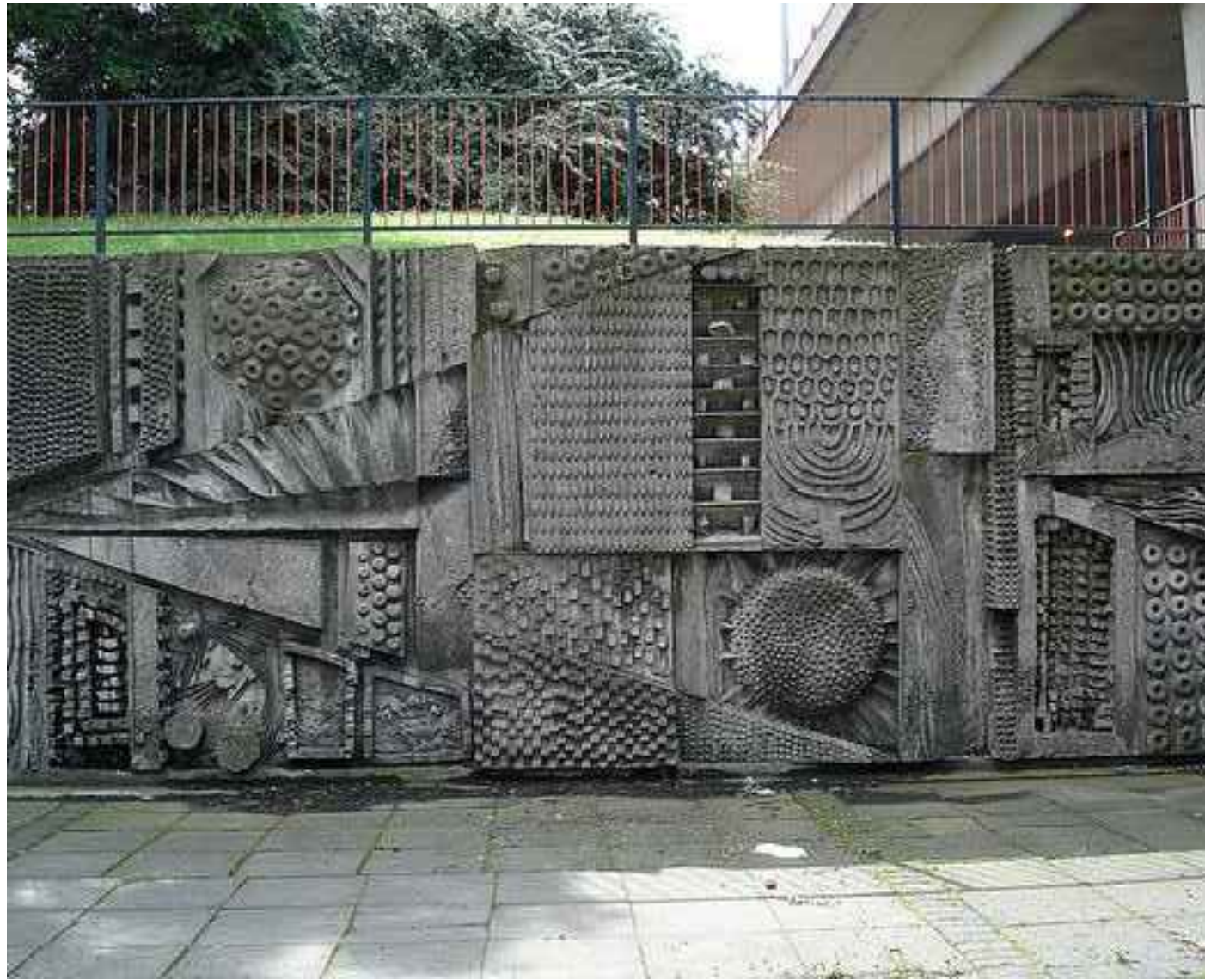
LINCOLN ROAD 100 BLOCK
MIAMI BEACH, FL 33139

MATERIALS LEGEND

SCALE: NTS

DATE:
11/06/2023

L-2.07



NATURALFICIAL

6915 Red Rd Suite 224, Coral Gables, FL 33143
T 786.717.6564

THIS ITEM HAS BEEN DIGITALLY SIGNED
AND SEALED BY PETER ANSELMO ON 04.17.2023

LINCOLN ROAD 100 BLOCK
MIAMI BEACH, FL 33139

INSPIRATION IMAGES

SCALE: NTS

DATE:
11/06/2023

L-2.08



NATURALFICIAL

6915 Red Rd Suite 224, Coral Gables, FL 33143
T 786.717.6564

THIS ITEM HAS BEEN DIGITALLY SIGNED
AND SEALED BY PETER ANSELMO ON 04.17.2023

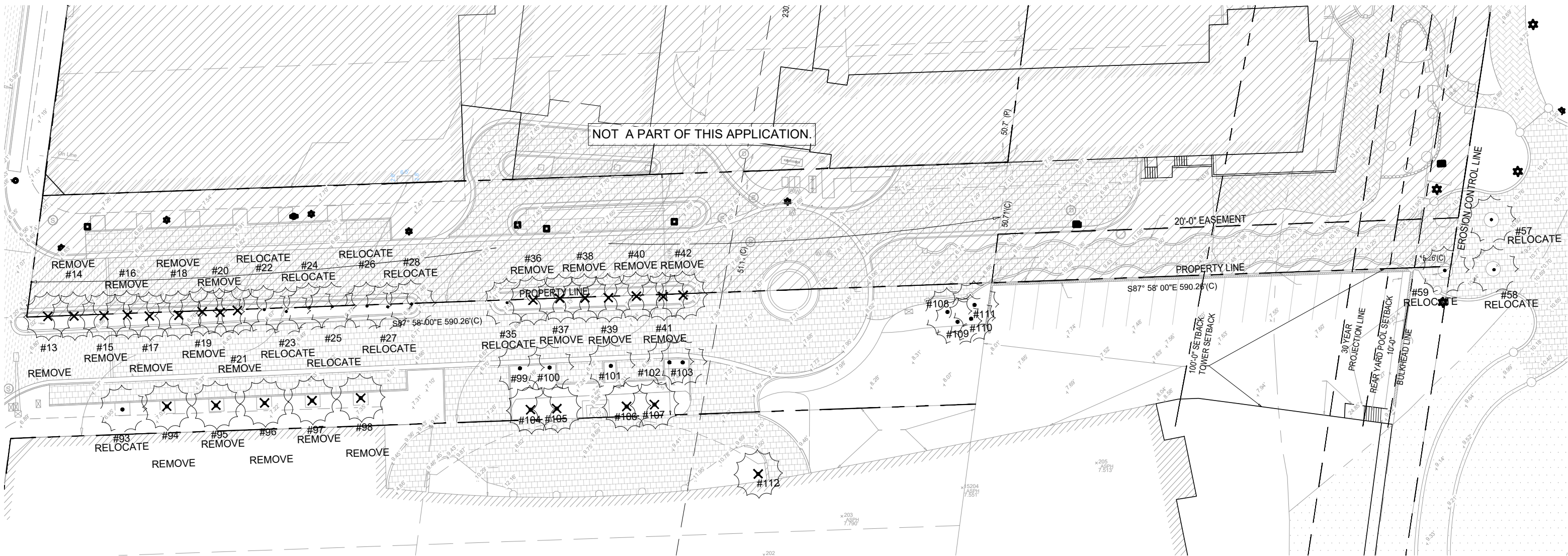
LINCOLN ROAD 100 BLOCK
MIAMI BEACH, FL 33139

INSPIRATION IMAGES

SCALE: NTS

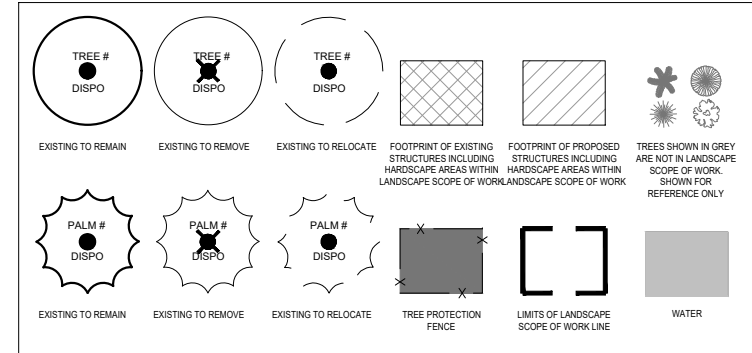
DATE:
11/06/2023

L-2.09



NOT A PART OF THIS APPLICATION.

TREE DISPOSITION | GRAPHIC LEGEND



TREE DISPOSITION | GRAPHIC LEGEND

- EXISTING TREES DESIGNATED TO REMAIN SHALL BE PROTECTED DURING ALL CONSTRUCTION PHASES. ANY TREES OR SHRUBS DESIGNATED TO REMAIN, WHICH ARE SCARRED OR DESTROYED WILL BE REPLACED AT THE CONTRACTOR'S EXPENSE, WITH SIMILAR SPECIES, SIZE AND QUALITY.
- REFER TO AND COORDINATE WITH TREE DISPOSITION LIST.
- OBTAIN ALL REQUIRED TREE REMOVAL PERMITS PRIOR TO THE COMMENCEMENT OF WORK.
- GENERAL CONTRACTOR SHALL BE RESPONSIBLE TO VERIFY ALL EXISTING TREES PRIOR TO COMMENCEMENT OF WORK.
- GENERAL CONTRACTOR SHALL BE RESPONSIBLE TO PROTECT ALL ADJACENT PORTIONS OF THE SITE AND BUILDING NOT PART OF DISPOSITION SCOPE OF WORK.
- GENERAL CONTRACTOR SHALL BE RESPONSIBLE TO PROPERLY SECURE ALL PORTIONS OF THE SITE DURING ALL DEMOLITION PHASES.
- GENERAL CONTRACTOR SHALL BE RESPONSIBLE TO OBTAIN PERMIT REQUIRED FOR TEMPORARY FENCING.
- LANDSCAPE CONTRACTOR TO PROVIDE TEMPORARY IRRIGATION AS NEEDED, REFER TO LANDSCAPE PLANS FOR FURTHER INFORMATION.
- TREES SHOWN IN GREY ARE NOT IN LANDSCAPE SCOPE OF WORK. SHOWN FOR REFERENCE ONLY.

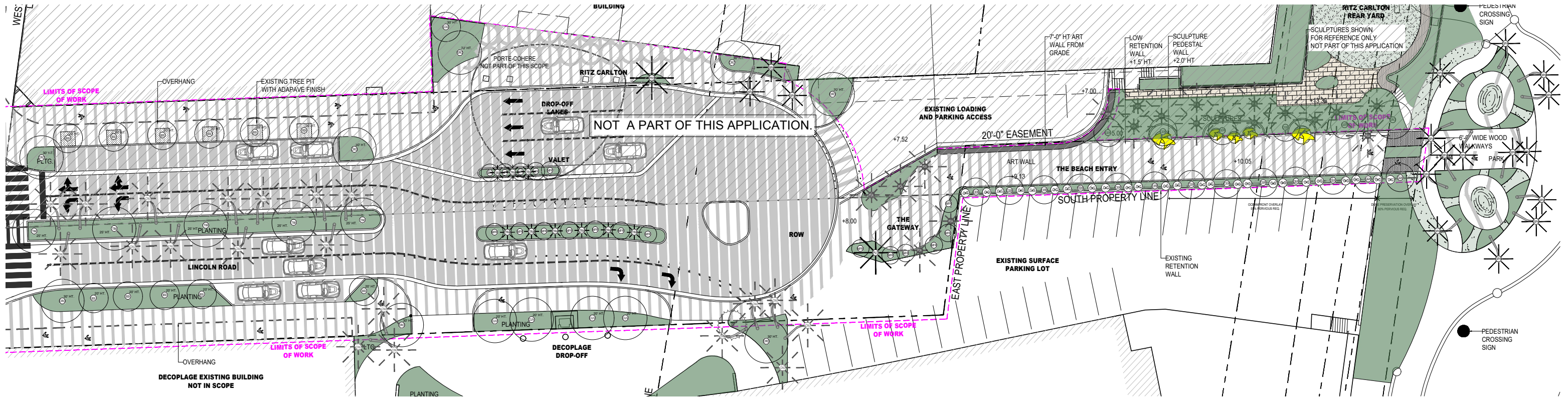
NOTE: TREE DISPOSITION LIST LOCATED ON SHEET L-3.01.

HPB SUBMITTAL

KEY #	ABRV.	BOTANICAL NAME	COMMON NAME	SIZE			DISPOSITION			ON SITE	MITIGATION REQ'D
				DBH. (IN.)	HT. (FT.)	SPD. (FT.)	REMAIN	REMOVE	RELOCATE ON SITE		
13	CNU	<i>Cocos nucifera</i>	Coconut Palm	8.4	20	20			X	Yes	No
14	CNU	<i>Cocos nucifera</i>	Coconut Palm	8.4	22	20			X	Yes	No
15	CNU	<i>Cocos nucifera</i>	Coconut Palm	8.4	22	20			X	Yes	No
16	CNU	<i>Cocos nucifera</i>	Coconut Palm	8.4	22	20			X	Yes	No
17	CNU	<i>Cocos nucifera</i>	Coconut Palm	7.2	18	20			X	Yes	No
18	CNU	<i>Cocos nucifera</i>	Coconut Palm	7.2	20	20			X	Yes	No
19	CNU	<i>Cocos nucifera</i>	Coconut Palm	7.2	20	20			X	Yes	No
20	CNU	<i>Cocos nucifera</i>	Coconut Palm	7.2	20	20			X	Yes	No
21	CNU	<i>Cocos nucifera</i>	Coconut Palm	7.2	18	20			X	Yes	No
22	CNU	<i>Cocos nucifera</i>	Coconut Palm	7.2	20	20			X	Yes	No
23	CNU	<i>Cocos nucifera</i>	Coconut Palm	8.4	22	20			X	Yes	No
24	CNU	<i>Cocos nucifera</i>	Coconut Palm	8.4	22	20			X	Yes	No
25	CNU	<i>Cocos nucifera</i>	Coconut Palm	8.4	22	20			X	Yes	No
26	CNU	<i>Cocos nucifera</i>	Coconut Palm	8.4	22	20			X	Yes	No
27	CNU	<i>Cocos nucifera</i>	Coconut Palm	8.4	22	20			X	Yes	No
28	CNU	<i>Cocos nucifera</i>	Coconut Palm	8.4	22	20			X	Yes	No
35	CNU	<i>Cocos nucifera</i>	Coconut Palm	7.2	30	20			X	Yes	No
36	CNU	<i>Cocos nucifera</i>	Coconut Palm	7.2	25	20		X		Yes	Yes
37	CNU	<i>Cocos nucifera</i>	Coconut Palm	7.2	25	20		X		Yes	Yes
38	CNU	<i>Cocos nucifera</i>	Coconut Palm	7.2	20	20		X		Yes	Yes
39	CNU	<i>Cocos nucifera</i>	Coconut Palm	7.2	20	20		X		Yes	Yes
40	CNU	<i>Cocos nucifera</i>	Coconut Palm	7.2	22	20		X		Yes	Yes
41	CNU	<i>Cocos nucifera</i>	Coconut Palm	7.2	18	20		X		Yes	Yes
42	CNU	<i>Cocos nucifera</i>	Coconut Palm	8.4	20	20		X		Yes	Yes
57	PCA	<i>Phoenix canariensis</i>	Canary Island Date Palm	14	25	20			X	Yes	No
58	PCA	<i>Phoenix canariensis</i>	Canary Island Date Palm	14	25	20			X	Yes	No
59	PCA	<i>Phoenix canariensis</i>	Canary Island Date Palm	14	25	20			X	Yes	No
60	PCA	<i>Phoenix canariensis</i>	Canary Island Date Palm	14	25	20			X	Yes	No
93	PCA	<i>Phoenix canariensis</i>	Canary Island Date Palm						X	Yes	No
94	PCA	<i>Phoenix canariensis</i>	Canary Island Date Palm						X	Yes	No
95	PCA	<i>Phoenix canariensis</i>	Canary Island Date Palm						X	Yes	No
96	PCA	<i>Phoenix canariensis</i>	Canary Island Date Palm						X	Yes	No
97	PCA	<i>Phoenix canariensis</i>	Canary Island Date Palm						X	Yes	No
98	PCA	<i>Phoenix canariensis</i>	Canary Island Date Palm						X	Yes	No
99	CNU	<i>Cocos nucifera</i>	Coconut Palm						X	Yes	No
100	CNU	<i>Cocos nucifera</i>	Coconut Palm						X	Yes	No
101	CNU	<i>Cocos nucifera</i>	Coconut Palm						X	Yes	No
102	CNU	<i>Cocos nucifera</i>	Coconut Palm						X	Yes	No
103	CNU	<i>Cocos nucifera</i>	Coconut Palm						X	Yes	No
104	PRO	<i>Phoenix roebelenii</i>	Pygmy Date Palm					X		Yes	Yes
105	PRO	<i>Phoenix roebelenii</i>	Pygmy Date Palm					X		Yes	Yes
106	PRO	<i>Phoenix roebelenii</i>	Pygmy Date Palm					X		Yes	Yes
107	PRO	<i>Phoenix roebelenii</i>	Pygmy Date Palm					X		Yes	Yes
108	CNU	<i>Cocos nucifera</i>	Coconut Palm						X	Yes	No
109	CNU	<i>Cocos nucifera</i>	Coconut Palm						X	Yes	No
110	CNU	<i>Cocos nucifera</i>	Coconut Palm						X	Yes	No
111	CNU	<i>Cocos nucifera</i>	Coconut Palm						X	Yes	No
112	UNK	Unknown						X		Yes	Yes
MITIGATION SUMMARY											
Total Number of on site and R.O.W Trees:				0							
Total Number of on site and R.O.W Palms:				47							
Total Number of Trees to Remain:				0							
Total Number of Trees to Remove:				0							
Total Number of Trees to Relocate:				0							
Total Number of Palms to Remain:				5							
Total Number of Palms to Remove:				12							
Total Number of Palms to Relocate:				36							
CITY OF MIAMI BEACH- (SEC. 46-56) DEFINITIONS - 1.4 DEFINITIONS OF LANDSCAPE REQUIREMENTS											
Specimen tree: A tree with an individual trunk that has a DBH of 12 inches or greater, or any multiple-trunk tree in which the sum of the diameters of all the trunks at DBH is 12 inches or greater. Includes palm trees with an overall height of ten feet or greater.											
CITY OF MIAMI BEACH- TREE REPLACEMENT CHART (SEC. 46-61.)											
Total Palms Removed		Total number of replacement trees required (where each Replacement Tree is a minimum of 2" DBH x 6' spread in Canopy x 12' in height)			Total number of replacement trees required (where each Replacement Tree is a minimum of 4" DBH x 8' spread in Canopy x 16' in height)			Contribution to Tree Trust Fund			
12		12			6			\$12,000			

NOTE: MISSING TREE SPECS TO BE DETERMINED AT TIME OF PERMITTING.



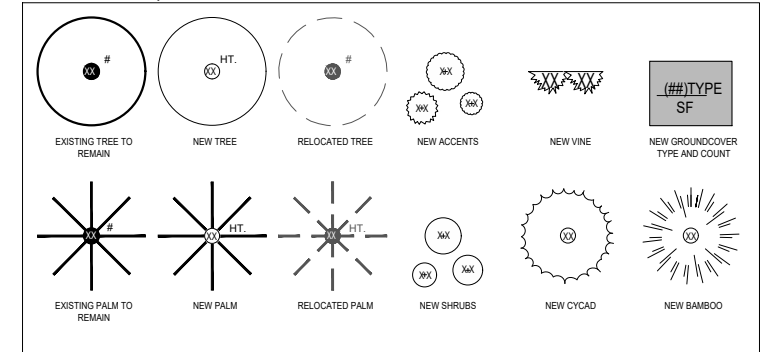


NOTE: THERE SHALL BE NO IMPACT ON DUNE SYSTEM.

NOTE: ALL LANDSCAPE WORK NORTH OF SOUTH PROPERTY LINE IS PART OF THE PRIVATE APPLICATION AND IS SHOWN FOR REFERENCE ONLY.

NOTE: SEE SHEET L-3.11 FOR LANDSCAPE LIST

LANDSCAPE PLAN | GRAPHIC LEGEND



HPB SUBMITTAL



NATURALFICIAL

6915 Red Rd Suite 224, Coral Gables, FL 33143
T 786.717.6564

THIS ITEM HAS BEEN DIGITALLY SIGNED
AND SEALED BY PETER ANSELMO ON 04.17.2023

LINCOLN ROAD 100 BLOCK
MIAMI BEACH, FL 33139

OVERALL LANDSCAPE PLAN

SCALE: 1" = 40'-0"

DATE:
11/06/2023

L-3.10

NATURALFICIAL, INC. 100 LINCOLN ROAD ROW PLANT LIST: 2023.06.14									
QTY	ABRV.	BOTANICAL NAME	COMMON NAME	SPECIFICATIONS	FL. NATIVE	DROUGHT TOLERANT			
TREES						YES	NO	YES	NO
12	BSI	<i>Bursera simaruba</i>	Gumbo Limbo	25' Ht.	X		X		
18	CER	<i>Conocarpus erectus</i>	Green Buttonwood	20' Ht.	X		X		
1	COD	<i>Cananga odorata</i>	Ylang-Yland	30' Ht.		X	X		
9	CRO	<i>Clusia rosea</i>	Autograph Tree	30' Ht. Specimen, Multi-branch	X		X		
18	MFR	<i>Myrcianthes fragrans</i>	Simpson Stopper	12'-15' Multi-Trunk	X		X		
4	CUV	<i>Coccoloba uvifera</i>	Sea Grape	20' Ht.	X		X		
5	TIM	<i>Tabebuia impetiginosus</i>	Pink Trumpet Tree	25' Ht.		X	X		
PALMS									
1	PSY	<i>Phoenix sylvestris</i>	Sylvester Palm	35' Ht., Multi-trunk		X	X		
1	PUT	<i>Pandanus utilis</i>	Screw Pine	20' Ht.		X	X		
3	SPA	<i>Sabal palmetto</i>	Sabal Palm	25'- 35' Ht., Character Trunks	X		X		
9	TRA	<i>Thrinax radiata</i>	Florida Thatch Palm	10'-14' Ht. Staggered	X		X		

NATURALFICIAL, INC. BEACHWALK PLANT LIST: 2023.05.08								
QTY	ABRV.	BOTANICAL NAME	COMMON NAME	SPECIFICATIONS	FL. NATIVE	DROUGHT TOLERANT		
PALMS								
14	SPA	<i>Sabal palmetto</i>	Sabal Palm	25'- 35' Ht., Character Trunks	X		X	

NOTE: 98% OF PROPOSED PLANTS MEET FLORIDA FRIENDLY CRITERIA



TREES



Bursera simaruba
Gumbo Limbo



Conocarpus erectus
Green Buttonwood



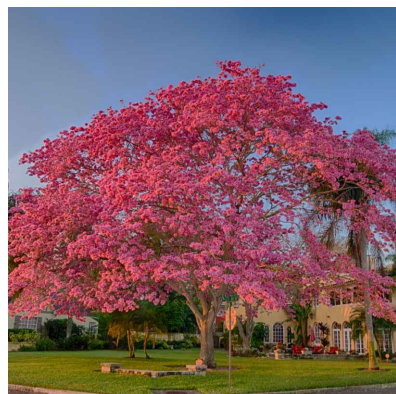
Clusia rosea
Autograph Tree



Myrcianthes fragrans
Simpson Stopper



Coccoloba uvifera
Seagrape

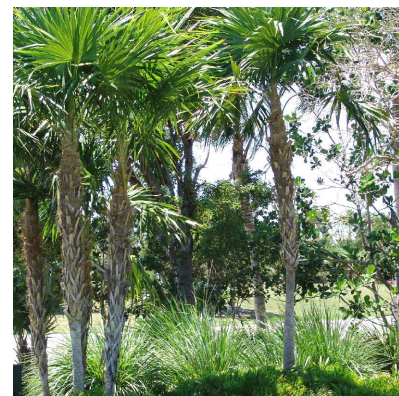


Tabebuia impetiginosa
Pink Trumpet Tree

PALMS



Pandanus utilis
Screw Pine



Thrinax radiata
Florida Thatch Palm



NATURALFICIAL

6915 Red Rd Suite 224, Coral Gables, FL 33143
T 786.717.6564

THIS ITEM HAS BEEN DIGITALLY SIGNED
AND SEALED BY PETER ANSELMO ON 04.17.2023

LINCOLN ROAD 100 BLOCK
MIAMI BEACH, FL 33139

LANDSCAPE REFERENCE IMAGES

SCALE: NTS

DATE:
11/06/2023

L-3.20

GENERAL PLANTING NOTES AND SPECIFICATIONS:

GENERAL

- EXISTING TREES DESIGNATED TO REMAIN SHALL BE PROTECTED DURING ALL CONSTRUCTION PHASES. ANY TREES OR SHRUBS SCARRED OR DESTROYED DESIGNATED TO REMAIN WILL BE REPLACED AT THE CONTRACTOR'S EXPENSE, WITH SIMILAR SPECIES, SIZE AND QUALITY.
- EXISTING TREES DESIGNATED TO BE STORED OFF-SITE, SHALL BE PROTECTED AND CARED FOR ACCORDINGLY TO INDUSTRY STANDARD. ANY TREES OR SHRUBS SCARRED OR DESTROYED WILL BE REPLACED AT THE CONTRACTOR'S EXPENSE, WITH SIMILAR SPECIES, SIZE AND QUALITY.
- LANDSCAPE CONTRACTOR SHALL BECOME FAMILIAR WITH ALL UNDERGROUND UTILITIES OR STRUCTURES PRIOR TO DIGGING. LANDSCAPE CONTRACTOR SHALL REPAIR ALL DAMAGE TO UNDERGROUND UTILITIES, AND/OR CONSTRUCTION CAUSED BY UTILITY DAMAGE, AT NO COST TO THE OWNER.
- ALL PLANT MATERIALS SHALL BE GUARANTEED FOR A PERIOD OF 12 MONTHS AFTER DATE OF SUBSTANTIAL COMPLETION.
- LANDSCAPE CONTRACTOR SHALL VERIFY ALL ESTIMATED QUANTITIES OF MATERIAL SHOWN ON THE DRAWINGS PRIOR TO SUBMITTING HIS BID. PLANTING PLAN TO TAKE PRECEDENCE OVER PLAN LIST.
- EXISTING PLANT MATERIAL NOT SHOWN ON THE PLAN AND IN CONFLICT WITH NEW PLANTING SHALL BE EVALUATED AT THE TIME OF NEW PLANTING INSTALLATION BY THE LANDSCAPE ARCHITECT.
- ALL BUILDING CONSTRUCTION MATERIAL AND FOREIGN MATERIAL SHALL BE REMOVED FROM PLANTING AREAS AND REPLACED WITH 60/20 MIX FILL SOIL, OR AS PER SPECIFICATIONS. ALL GRASSES IN PARKING LOTS AND ADJACENT BUILDINGS, SHALL BE EXCAVATED TO A DEPTH OF 3" MIN. AND REPLACED WITH 60/20 PLANT MIX, OR AS PER SPECIFICATIONS.
- ALL PLANT MATERIAL SYMBOLS SHOWN ON LANDSCAPE PLAN SHALL BE CONSIDERED DIAGRAMMATIC AND SHOULD BE ADJUSTED IN THE FIELD BY CONTRACTOR TO AVOID ALL UTILITIES AND ALL OTHER OBSTRUCTIONS AFTER CONSULTING THE LANDSCAPE ARCHITECT.
- ALL SIZES SHOWN FOR PLANT MATERIAL ON THE PLAN ARE TO BE CONSIDERED MINIMUM. ALL PLANT MATERIAL MUST MEET OR EXCEED THESE MINIMUM REQUIREMENTS FOR BOTH HEIGHT AND SPREAD. ANY OTHER REQUIREMENTS FOR SPECIFIC SHAPE OR EFFECT AS NOTED ON THE PLAN SHALL ALSO BE ADHERED TO. ALL TREES TO HAVE SINGLE TRUNK, UNLESS OTHERWISE NOTED ON THE PLANS OR PLANT LIST.
- SITE PREPARATION SHALL INCLUDE THE ERADICATION AND REMOVAL OF ANY WEEDS, GRASS, AS WELL AS CLEAN-UP OF ANY DEAD MATERIAL AND FINISH GRADING AS PER THE SPECS.
- THE LANDSCAPE CONTRACTOR SHALL AT ALL TIMES KEEP THE JOB SITE CLEAN AND FREE FROM ACCUMULATION OF WASTE MATERIAL, DEBRIS, AND RUBBISH.
- THE LANDSCAPE CONTRACTOR SHALL EXERCISE CAUTION TO PROTECT ANY NEW HARDSCAPE CONSTRUCTION OR IRRIGATION. ANY DAMAGE SHALL BE REPLACED OR REPAIRED TO THE ORIGINAL STATE BY THE LANDSCAPE CONTRACTOR AT NO ADDITIONAL COST TO THE OWNER.
- ALL PLANT MATERIAL TO BE FLORIDA #1 OR BETTER, AS DEFINED BY THE FLORIDA DEPARTMENT OF AGRICULTURE'S CODES AND STANDARDS FOR NURSERY PLANTS PART I AND II.
- MULCH ALL PLANTING AREAS WITH SHREDED ORGANIC MULCH TO A MINIMUM DEPTH OF 2". WITH THE EXCEPTION OF BEACH PLANTING.
- ALL PLANTING AREAS WITHIN LIMIT OF BEACH SHALL BE 100% FULLY IRRIGATED. THE IRRIGATION CONTRACTOR AWARDED THE BID SHALL COMPLY WITH THE PROPOSED IRRIGATION DESIGN.
- ON-SITE LAYOUT OF PLANT MATERIAL MUST BE COORDINATED WITH THE LANDSCAPE ARCHITECT PRIOR TO INSTALLATION.
- LANDSCAPE CONTRACTOR TO INCLUDE REMOVAL, CORRECTIVE PRUNING AND/OR REPLACEMENT. ANY CORRECTIVE ACTIONS REQUIRED SHALL BE PERFORMED IN ACCORDANCE WITH THE STANDARDS OF THE GOVERNING COUNTY AND/OR AN ISSUED ERM TREE OR ENVIRONMENTAL PERMIT.
- TREE PROTECTION BARRIERS MUST BE INSTALLED AT THE DRIP LINES OF ALL TREES AND PALMS TO REMAIN OR TO BE RELOCATED PRIOR TO THE START OF CONSTRUCTION ACTIVITIES. BARRIERS SHALL REMAIN IN PLACE UNTIL CONSTRUCTION HAS COMPLETED.
- MULCH SHALL NOT BE APPLIED WITHIN 6" OF ANY TREE OR PALM TRUNKS THAT ARE INSTALLED OR INCORPORATED INTO THE PROJECT. FOR ROW TREES/PALMS PLEASE UTILIZE AMERIGHOW (PREMIUM PINEBARK BROWN) SHREDED MULCH OR A CITY APPROVED ALTERNATIVE.
- SHOULD ANY CORRECTIVE STRUCTURAL PRUNING BE NECESSARY FOR TREES PROPOSED TO REMAIN ON SITE, DUE TO CLEARANCE, SAFETY OR FOR CONSTRUCTION RELATED REASONS THE PRUNING SHALL BE DIRECTED OR PERFORMED BY AN ISA OR ASCA CERTIFIED ARBORIST IN ACCORDANCE WITH THE LATEST VERSION OF THE ANSI A-300 PRUNING STANDARDS AND GOOD HORTICULTURAL PRACTICES. THE CITY URBAN FORESTER SHALL BE PROVIDED WITH A WRITTEN COPY OF THE PROPOSED PRUNING PLAN INCLUDING THE REASONS WHY PRUNING IS NECESSARY, PRIOR TO THE PRUNING ACTIVITIES TAKING PLACE.
- CARE SHALL BE TAKEN TO AVOID UTILITY OR CONSTRUCTION TRENCHING THROUGH EXISTING TREE OR PALM DRIP LINES OF TREES SLATED TO REMAIN IN PLACE OR BE RELOCATED. IF CONSTRUCTION REQUIRES THE CUTTING OF ANY ROOTS WITH A DIAMETER OF 2" OR GREATER, ROOTS SHALL BE CLEANLY CUT WITH A SHARP TOOL, AS DIRECTED BY AN ISA CERTIFIED ARBORIST, AND IN ACCORDANCE WITH THE ANSI A-300 STANDARDS. CUT ROOTS SHOULD BE IMMEDIATELY COVERED WITH SOIL TO PREVENT DRYING. ROOTS SHOULD NOT BE TORN OR BROKEN BY HEAVY EQUIPMENT, AND SHREDED, RAGGED OR BROKEN ROOTS ENDS SHOULD BE NOTED AND REVIEWED WITH THE LANDSCAPE ARCHITECT PRIOR TO ANY ROOT PRUNING TAKING PLACE.

WARRANTY

- LANDSCAPE CONTRACTOR SHALL PROVIDE A MINIMUM OF ONE (1) YEAR GUARANTEE FOR ALL RELOCATED TREES/PALMS AFTER FINAL ACCEPTANCE BY LANDSCAPE ARCHITECT AND/OR CLIENT.
- LANDSCAPE CONTRACTOR SHALL REMOVE COMPLETELY AND DISPOSE OF OFF-SITE, ANY RELOCATED TREE/PALM THAT FAILS TO THRIVE AS DETERMINED BY THE LANDSCAPE ARCHITECT.
- FOR ANY RELOCATED TREE/PALM REMOVED DUE TO ITS FAILURE TO THRIVE, LANDSCAPE CONTRACTOR SHALL BE RESPONSIBLE FOR REPLACING AND INSTALLING WITH A SPECIMEN OF EQUAL OR GREATER SPECIFICATION OF ORIGINAL REPLACEMENT MATERIAL. SHALL BE APPROVED BY LANDSCAPE ARCHITECT PRIOR TO PROCUREMENT, PREPARATION OR INSTALLATION.

TREE / PALM RELOCATION NOTES

- VERIFY AND INSURE ALL TREES/PALMS IDENTIFIED ON THE CONSTRUCTION DRAWINGS AND THOSE TAGGED IN THE FIELD CORRESPOND AS TO NUMBER AND DESCRIPTION. ANY DISCREPANCIES SHALL BE BROUGHT TO THE ATTENTION OF THE LANDSCAPE ARCHITECT IMMEDIATELY, PRIOR TO ANY RELOCATION.
- LANDSCAPE CONTRACTOR SHALL BE RESPONSIBLE FOR TREE/PALM PROTECTION OF ALL VERIFIED MATERIAL. INSTALL BARRICADE OF GALVANIZED WELDED WIRE FABRIC OR PLASTIC MESH TO ENCOMPASS THE DRIP LINE OF THE TREE/PALM. BARRICADE TO BE REMOVED UPON COMPLETION OF BACKFILLING.
- TREE ROOT BALL SHALL BE ROOT PRUNED 50% (EQUALLY AROUND TREE) 60 DAYS PRIOR TO TRANSPLANT. THE REMAINING 50% TO BE PRUNED 30 DAYS PRIOR TO TRANSPLANTING. CUTTING OF ANY ROOTS 2" OR GREATER SUBJECT TO PERMISSIBLE URBAN FORESTRY.
- PALMS TO BE RELOCATED MAY BE IMMEDIATELY RELOCATED AFTER DIGGING.
- ROOTS TO BE PRUNED WITH CLEAN, SHARP TOOLS. ROOTS ONE (1) INCH AND LARGER IN DIAMETER SHALL BE NEATLY AND CLEANLY CUT WITH A HAND SAW OR OTHER APPROVED CUTTING IMPLEMENT.
- LANDSCAPE CONTRACTOR TO APPLY MYCORRHIZA APPLICATION TO ROOTS DURING ROOT PRUNING AND DIGGING OPERATIONS. ALL PRUNING TO BE REVIEWED AND APPROVED BY LANDSCAPE ARCHITECT PRIOR TO PRUNING.
- DEAD WOOD, CROSSING BRANCHES, AND GENERAL CANOPY PRUNING SHALL BE PERFORMED OR DIRECTED BY AN ISA OR ASCA CERTIFIED ARBORIST IN ACCORDANCE WITH THE LATEST VERSION OF THE ANSI A-300 PRUNING STANDARDS AND GOOD HORTICULTURAL PRACTICES IMMEDIATELY AFTER COMPLETION OF ROOT PRUNING OF EACH SPECIMEN TO BE RELOCATED. ALL PRUNING TO BE REVIEWED AND APPROVED BY LANDSCAPE ARCHITECT PRIOR TO PRUNING.
- ROOT BALL SIZE TABLE:

(NOTE: ROOT BALL SIZES SHALL EXCEED MINIMUM STANDARDS SET FORTH IN 'GRADES AND STANDARDS FOR NURSERY PLANTS, PART II, PALMS AND TREES, FLORIDA DEPARTMENT OF AGRICULTURE')

TREE/PALM CALIPER	MINIMUM ROOT BALL DIAMETER
1" - 1 1/2"	16"
1 1/2" - 1 3/4"	20"
1 3/4" - 2"	24"
2" - 2 1/2"	28"
2 1/2" - 3 1/2"	32"
3 1/2" - 4"	36"
4" - 4 1/2"	40"
4 1/2" - 5"	44"
5" - 5 1/2"	48"

THE ROOT BALL OF LARGER CALIPER SIZES SHALL BE INCREASED PROPORTIONALLY AT THREE (3) INCHES OF ROOT BALL DIAMETER FOR EVERY INCREASE OF ONE (1) INCH IN CALIPER OR FRACTION THEREOF.

- MAINTAIN COMPACT ROOT BALLS. ROOT BALLS SHALL BE COMPLETELY ENCLOSED WITHIN A BURLAP COVERING OR STRETCH WRAP AS COMMONLY USED WITHIN THE HORTICULTURAL INDUSTRY, IN TWO COMPLETE LAYERS (THICKNESS).
- ALL TREES TO BE FLOODED FOR FIVE (5) DAYS PRIOR TO TRANSPLANT.
- ALL PITS TO BE FILLED THE SAME DAY AND WITH CLEAN FILL IN 18" INCH LIFTS AND LAYERS, EACH THEN COMPACTED BEFORE A SUBSEQUENT 18" LIFT LAYER IS PLACED. REPEAT UNTIL BACKFILL IS FLUSH WITH SURROUNDING GRADE.
- CORRECT ALL PROBLEMS RELATED TO SETTLEMENT, EROSION, OR OTHER DISTRESS OF EXCAVATED/BACKFILLED PIT FROM WHICH TREE/PALM HAS BEEN REMOVED, INCLUDING THE COMPLETE AND THROUGH REMOVAL OF ALL RESIDUAL ROOTS, STUMPS AND PORTIONS AND PARTS THEREOF.
- RESTORE THE SURFACE WITH MATERIAL TO MATCH ADJACENT AREAS. MATERIAL TO BE APPROVED BY LANDSCAPE ARCHITECT. CONTRACTOR TO PROVIDE A MINIMUM ONE-YEAR WARRANTY ON SETTLING AND PLANT MATERIAL.
- LANDSCAPE CONTRACTOR IS RESPONSIBLE FOR ALL MATERIAL INCLUDING BUT NOT LIMITED TO BACKFILL MATERIAL, PROTECTION FENCING, FLAGGING, ROOT BALL BURLAP OR SHRINK WRAP.

INSTALLATION

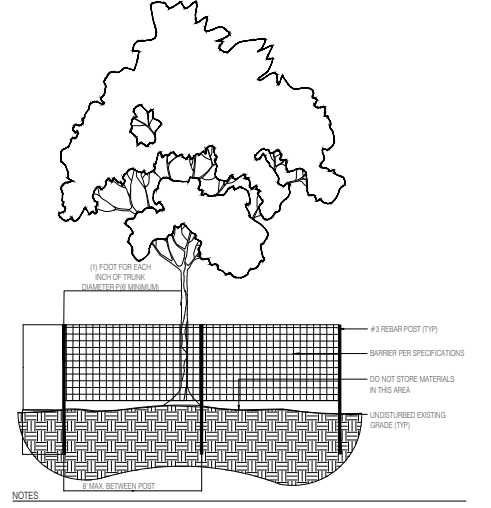
- VERIFY ALL UNDERGROUND CONSTRUCTIONS OR OBSTRUCTION (UTILITIES, SEPTIC SYSTEMS, ETC.) ARE IDENTIFIED, LOCATED AND CLEARLY MARKED AS APPROPRIATE PRIOR TO EXCAVATION OF PLANTING PITS FOR RELOCATED TREES AND PALMS. ANY UNKNOWN OBJECTS SHALL BE BROUGHT TO THE ATTENTION OF THE LANDSCAPE ARCHITECT IMMEDIATELY, PRIOR TO INSTALLING AND BACKFILLING.
- LANDSCAPE CONTRACTOR TO INSURE ALL PROPOSED PLANT LOCATIONS FOR LANDSCAPE ARCHITECTS APPROVAL PRIOR TO INSTALLATION.
- PLANTING PITS SHALL BE A MINIMUM OF TWO (2) TIMES LARGER IN DIAMETER AND ONE AND A HALF (1-1/2) TIMES LARGER IN DEPTH THAN THE ROOT BALL, ROUGHEN SIDES AND BOTTOM OF PIT.
- AFTER EACH PLANTING PIT IS EXCAVATED, PLACE SUFFICIENT PLANTING MIX IN BOTTOM OF EXCAVATION, AND SEAT PLANT, INSURING TOP OF ROOT BALL IS FLUSH WITH IMMEDIATELY ADJACENT FINAL OR PROPOSED GRADE.
- LANDSCAPE CONTRACTOR TO INSURE ALL PLANT MATERIAL IS INSTALLED AT THE CORRECT ELEVATION, REFER TO HARDSCAPE PLANS AND CIVIL ENGINEERS GRADING PLANS FOR PROPOSED SITE ELEVATIONS.
- LANDSCAPE CONTRACTOR TO INSURE ALL ROOT FLARES ARE EXPOSED.
- CENTER EACH RELOCATED TREE/PALM IN ITS PLANTING PIT AND BACKFILL WITH SPECIFIED PLANTING MIX.
- PLACE PLANTING MIX IN 12" INCH LIFTS/LAYERS AROUND ROOT BALL AND COMPACT UNTIL ALL VOIDS ARE FILLED WITH COMPACTED PLANTING MIX.
- BUILD SOIL SAUCER OF MOUND/DE EXCAVATED SOIL AROUND PERIMETER OF EACH PLANTING PIT TO FORM WATERING BASIN. MULCH TO A DEPTH OF 3".

HANDLING AND TRANSPORTATION

- TREES/PALMS SHALL BE PROPERLY HANDLED DURING EXCAVATION, MOVING, STORAGE, RELOCATION AND REPLANTING. DO NOT SCAR OR OTHERWISE DAMAGE TRUNKS AND BRANCHES, AND AVOID BREAKING LIMBS, BRANCHES AND FRONDS. DAMAGE TO TREE/PALM MAY BE CAUSE FOR ITS REJECTION, AND MAY REQUIRE MITIGATION REPLACEMENT BY THE CONTRACTOR.
- CONTRACTOR SHALL BE RESPONSIBLE FOR THE MANUAL WATERING OF ALL RELOCATED TREES/PALMS DURING MAINTENANCE PERIOD, UNTIL FINAL ACCEPTANCE OF ALL WORK BY THE LANDSCAPE ARCHITECT AND/OR CLIENT.
- LANDSCAPE CONTRACTOR SHALL BE RESPONSIBLE FOR INSTALLING AND MAINTAINING TREE/PALM PROTECTION. INSTALL BARRICADE OF GALVANIZED WELDED WIRE FABRIC OR PLASTIC MESH TO ENCOMPASS THE DRIP LINE OF THE TREE/PALM. BARRICADE SHALL BE PLUMB, TAUT, AND STURDY. BARRICADE TO BE LEFT UP AND MAINTAINED UNTIL DIRECTED TO REMOVE BY LANDSCAPE ARCHITECT.

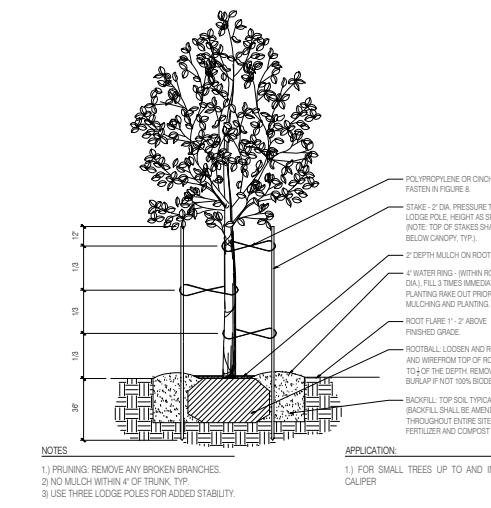
TREE PROTECTION MATERIALS

- POSTS: 2"x2" WOOD.
- ACCESS: PROVIDE HINGED, LATCHING GATE.
- AERATION PIPE: RIGID PVC PERFORATED DRAINPIPE, 3" INCH DIAMETER X 4 FEET LONG, WITH PERFORATED CAP. FILL WITH WASHED PEA GRAVEL.

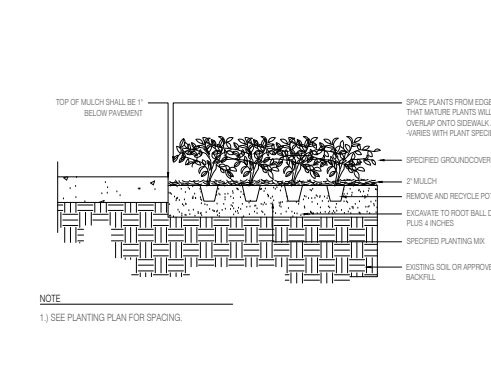


- NOTES**
- THE TREE PROTECTION BARRICADE SHALL BE AT LEAST FOUR (4) FEET HIGH. THE BARRIER SHALL CONSIST OF EITHER A WOOD FENCE WITH 2X4 POSTS PLACED A MAXIMUM OF EIGHT (8) FEET APART, WITH A 2X4 MINIMUM TOP RAIL OR A TEMPORARY WIRE MESH FENCE, OR OTHER SIMILAR BARRIER WHICH WILL LIMIT ACCESS TO THE PROTECTED AREA.
 - TREES LESS THAN 12" DBH, THE MINIMUM BARRICADE SHALL BE PLACED AT LEAST SIX (6) FEET AWAY FROM THE BASE OF THE TREE.
 - HAND WORK ONLY WITH TREE BARRICADES.
 - TREE BARRICADE APPROVAL: OBTAIN CITY APPROVAL OF TREE BARRICADES BEFORE BEGINNING CLEARING OPERATIONS OR ANY SITE DEVELOPMENT.

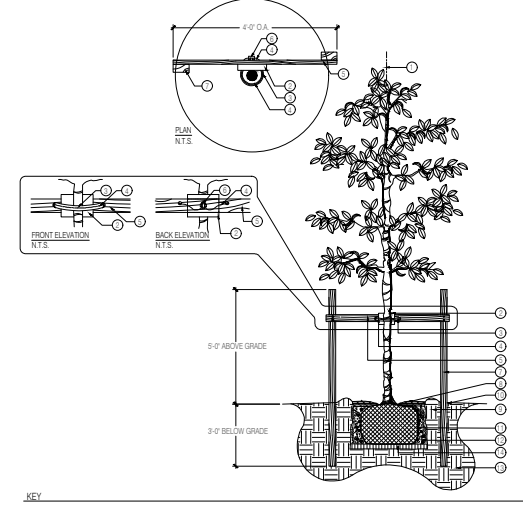
1 TREE PROTECTION DETAIL
SCALE: N.T.S.



4 SMALL TREE PLANTING AND STAKING DETAIL
SCALE: N.T.S.

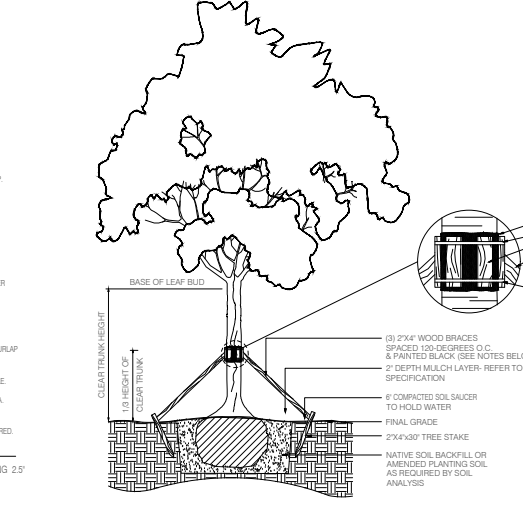


7 GROUNDCOVER PLANTING DETAIL
SCALE: N.T.S.

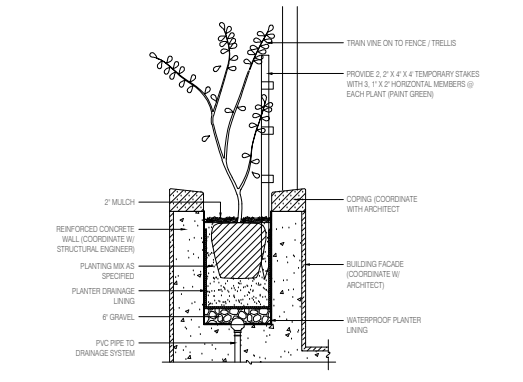


- KEY**
- SET TREE PLUMB IN PLANTING PIT
 - PROTECT TREE TRUNK WITH 1 NOMACO #8 STYROFOAM PADDING GUARDS, #6/8048048, AS SPECIFIED, OR APPROVED EQUAL
 - AMAZON HOUSE AND RUBBER #1 1/2" AIR HOSE #1140 OR APPROVED EQUAL, TO COVER TO GAUGE WIRE
 - 10 GAUGE GALVANIZED WIRE, WIRE PRODUCT #8, OR APPROVED EQUAL
 - 2" X 4" X 8' NON TREATED LANDSCAPE TIMBER AS SPECIFIED. FASTEN WITH 4 #2 DECK SCREWS TO 2" X 4" X 8' P.T. LANDSCAPE TIMBER
 - 1/2" MALLEABLE CLAMP FASTENER FOR WIRE SUPPLIER. FLORIDA WIRE #8 OR APPROVED EQUAL
 - 2" X 4" X 8' P.T. LANDSCAPE TIMBER AS SPECIFIED
 - MULCH DEPTH LAYER ON ROOT BALL
 - WATER RING (WITHIN ROOTBALL DIA, FILL 3 TIMES IMMEDIATELY AFTER PLANTING. MAKE CUT PRIOR TO MULCHING AND PLANTING)
 - ROOT FLARE 1" ABOVE FINISHED GRADE
 - BIBB OR CONTAINERIZED ROOTBALL. REMOVE ALL BURLAP IF NOT 100% BIODEGRADABLE. REMOVE CONTAINER FROM ROOTBALL PRIOR TO PLANTING
 - BACKFILL: TOP SOIL TYP. OR AREA BACKFILL SHALL BE AMENDED THROUGHOUT ENTIRE SITE WITH FERTILIZER AND COMPOST AS REQUIRED.
 - UNDISTURBED SUBGRADE
 - COMPACT SOIL IMMEDIATELY BENEATH THE ROOT BALL TO PREVENT SETTLING
 - CONTRACTOR TO ASSURE PERCOLATION IN TREE PITS
 - NO MULCH WITHIN 4" OF COVER

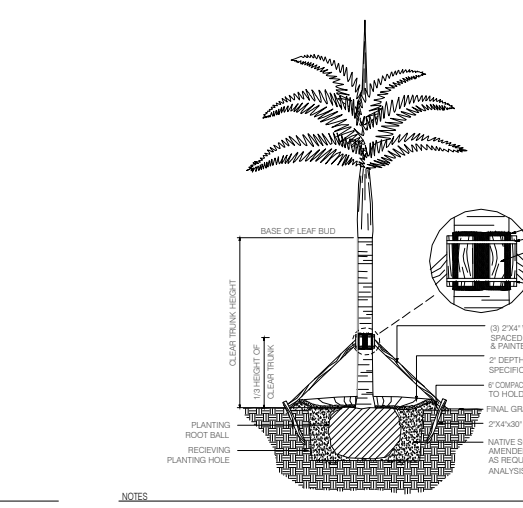
2 MEDIUM TREE PLANTING & STAKING DETAIL
SCALE: N.T.S.



5 LARGE TREE PLANTING AND STAKING DETAIL
SCALE: N.T.S.

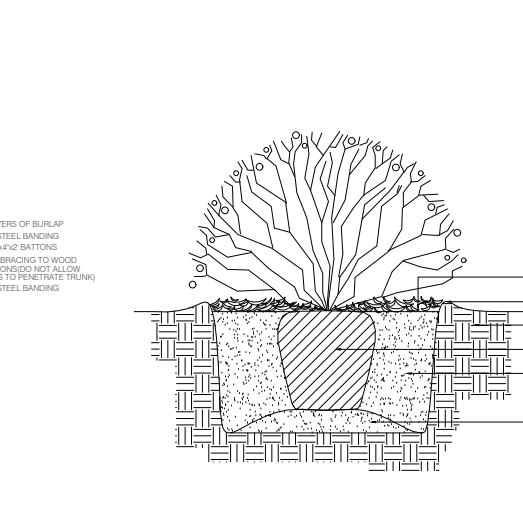


8 VINE PLANTING DETAIL
SCALE: N.T.S.

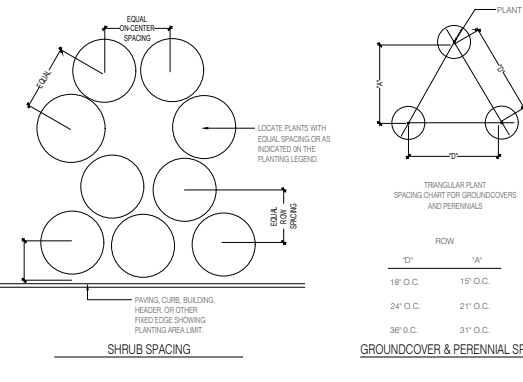


- NOTES**
- PALMS OVER 20' GVW HEIGHT, USE MINIMUM (4) 404 BRACING AND STAKES
 - PRIMARY STAKES SHOULD BE PLACED PARALLEL TO WALKWAYS WHENEVER POSSIBLE.
 - RECEIVING PLANTING HOLE SHALL BE APPROXIMATELY 1/3 LARGER THAN ROOTBALL.
 - BUD SHALL BE PERPENDICULAR TO THE GROUND PLANE.
 - TRUNK SHALL BE STRAIGHT AND WITHOUT CURVES.
 - NO SCARRED OR BLACKENED TRUNKS.
 - AMENDED SOIL MIX, TO BE ADDED AT THE TIME OF PLANTING IF NEEDED, SHALL CONSIST OF A RATIO MIX OF 80% CLEAN SILICA SAND AND 20% SCREENED, FLUXVISED TOPSOIL, AS NEEDED.

3 PALM PLANTING AND STAKING DETAIL
SCALE: N.T.S.



6 SHRUB PLANTING DETAIL
SCALE: N.T.S.



9 PLANT SPACING DETAIL
SCALE: N.T.S.



NATURALFICIAL
6915 Red Rd Suite 224, Coral Gables, FL 33143
T 786.717.6564

THIS ITEM HAS BEEN DIGITALLY SIGNED AND SEALED BY PETER ANSELMO ON 04.17.2023

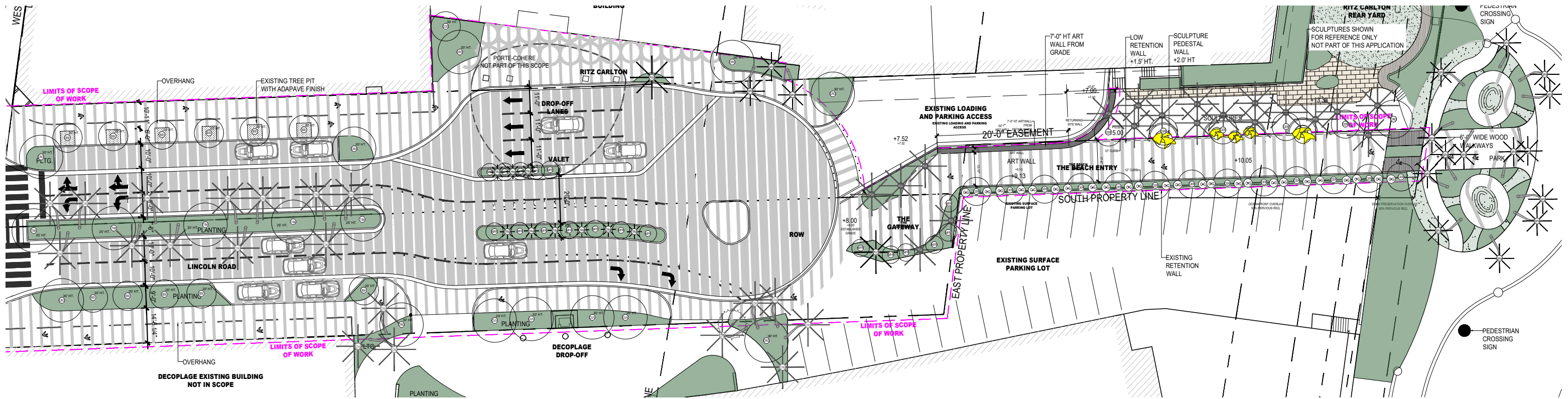
LINCOLN ROAD 100 BLOCK
MIAMI BEACH, FL 33139

GENERAL PLANTING DETAILS
SCALE: N.T.S.

DATE:
11/06/2023

L-3.30

HPB SUBMITTAL



NOTE: IRRIGATION PLAN TO BE DEVELOPED IN SUBSEQUENT SUBMITTALS.

HPB SUBMITTAL



NATURALFICIAL

6915 Red Rd Suite 224, Coral Gables, FL 33143
T 786.717.6564

THIS ITEM HAS BEEN DIGITALLY SIGNED AND SEALED BY PETER ANSELMO ON 04.17.2023

LINCOLN ROAD 100 BLOCK
MIAMI BEACH, FL 33139

OVERALL IRRIGATION PLAN

SCALE: NTS

DATE:
11/06/2023

L-5.10