

DRB23-0936

citizenM Hotel

Artistic Graphic

citizenM Miami South Beach Hotel

1212 Lincoln Road, Miami Beach, FL 33139

- Request for approval for 1,415 square foot outdoor mural at the rooftop level (Level 6)
- The site is being developed in Phase 2 as a new 6-story mixed use building: retail + hotel (168 guestrooms).
- citizenM is requesting that artist Eli Sudbrack, founder of *assume vivid astro focus*, create a bespoke mural for the location identified in this package.



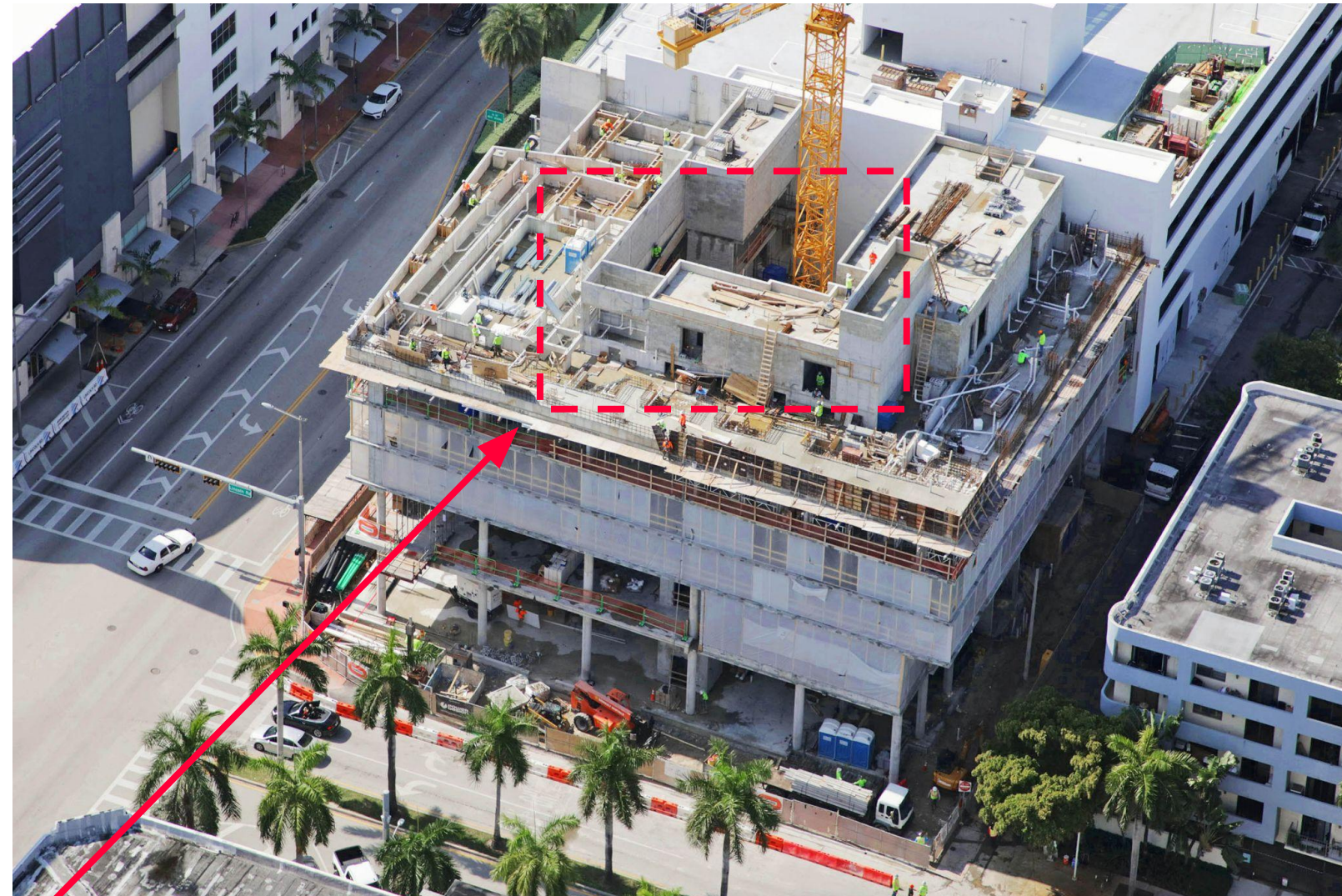
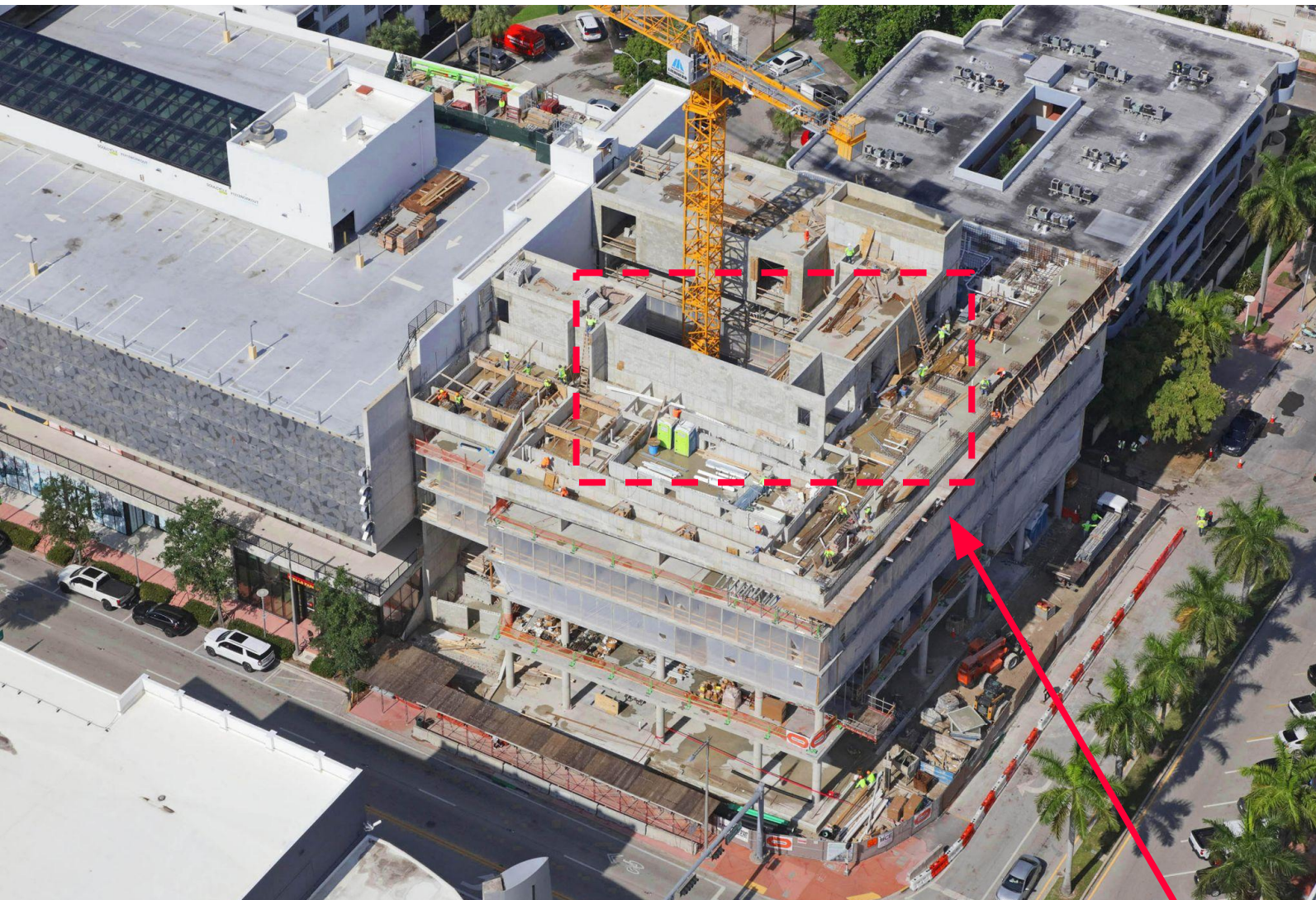


1
2
1
2

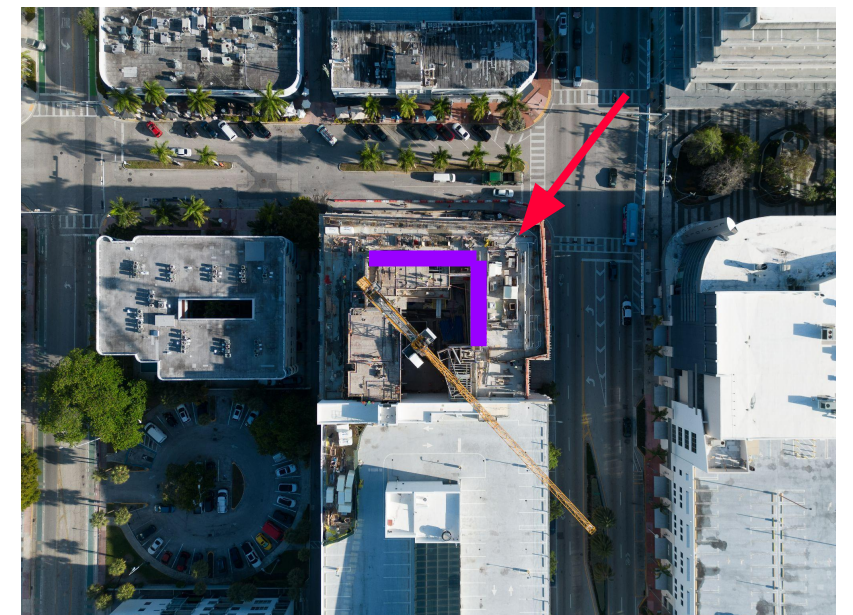
Lincoln Rd

FLORIDA
TRAFFIC
CAMERA

Site Photographs (aerial view)



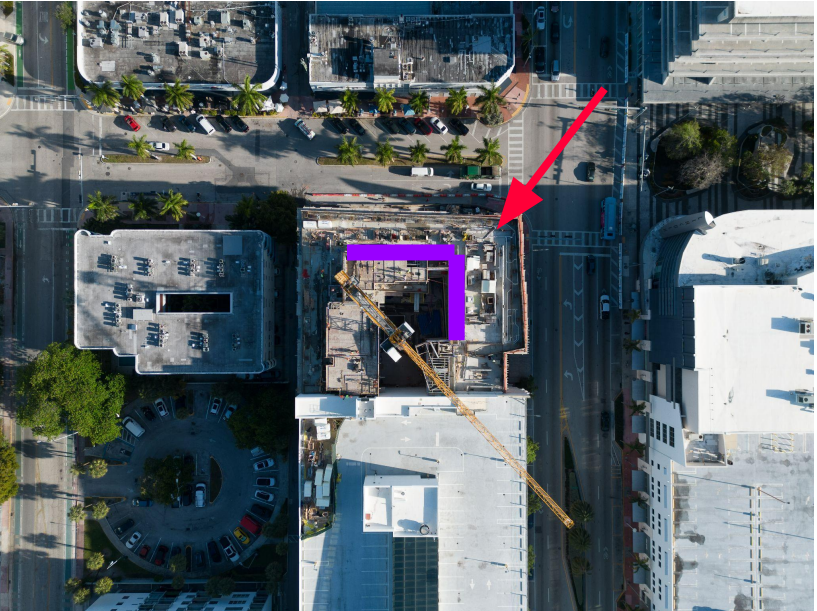
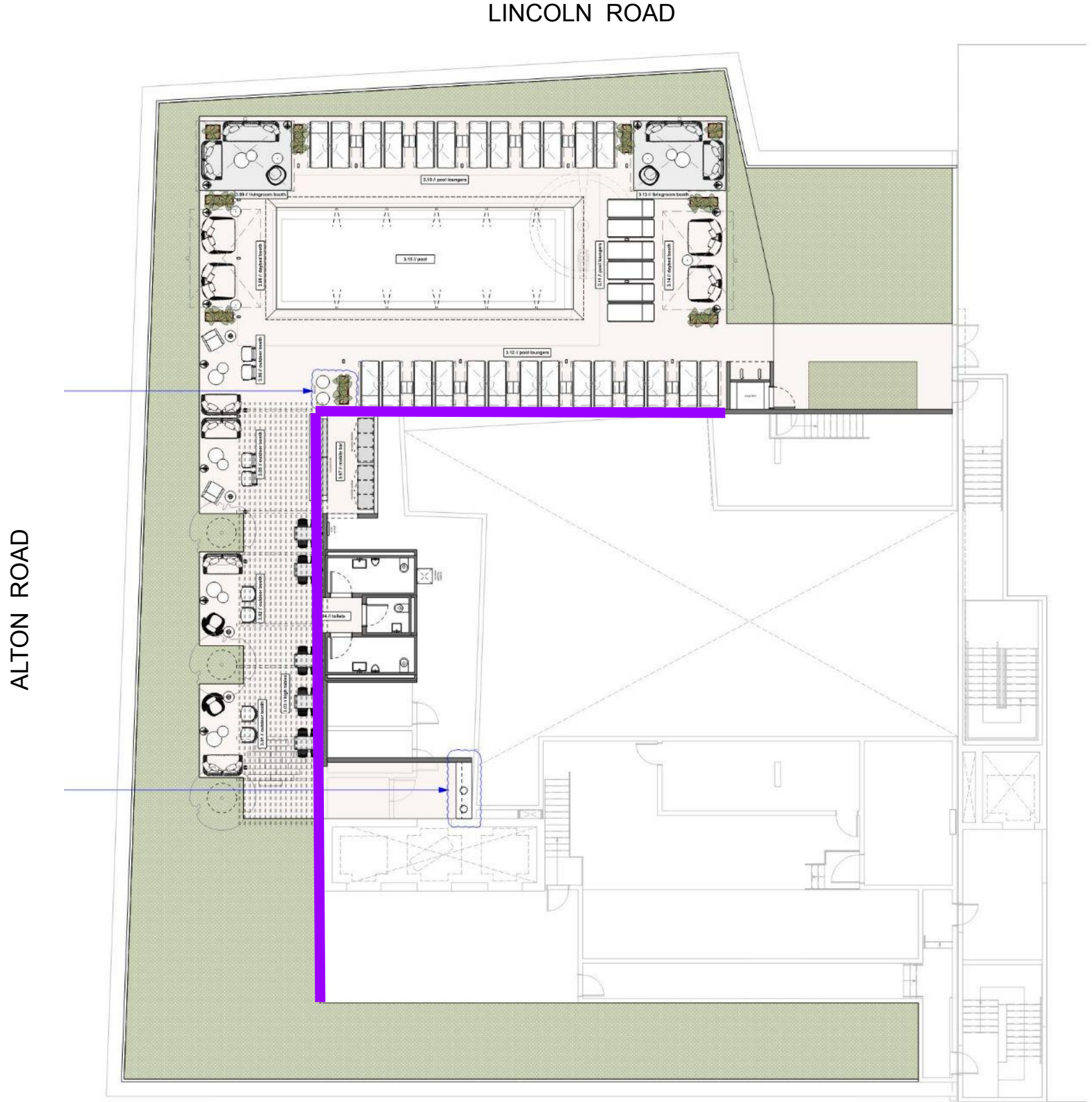
FUTURE HOTEL ROOFTOP POOL DECK ENTRANCE / ARTWORK LOCATION



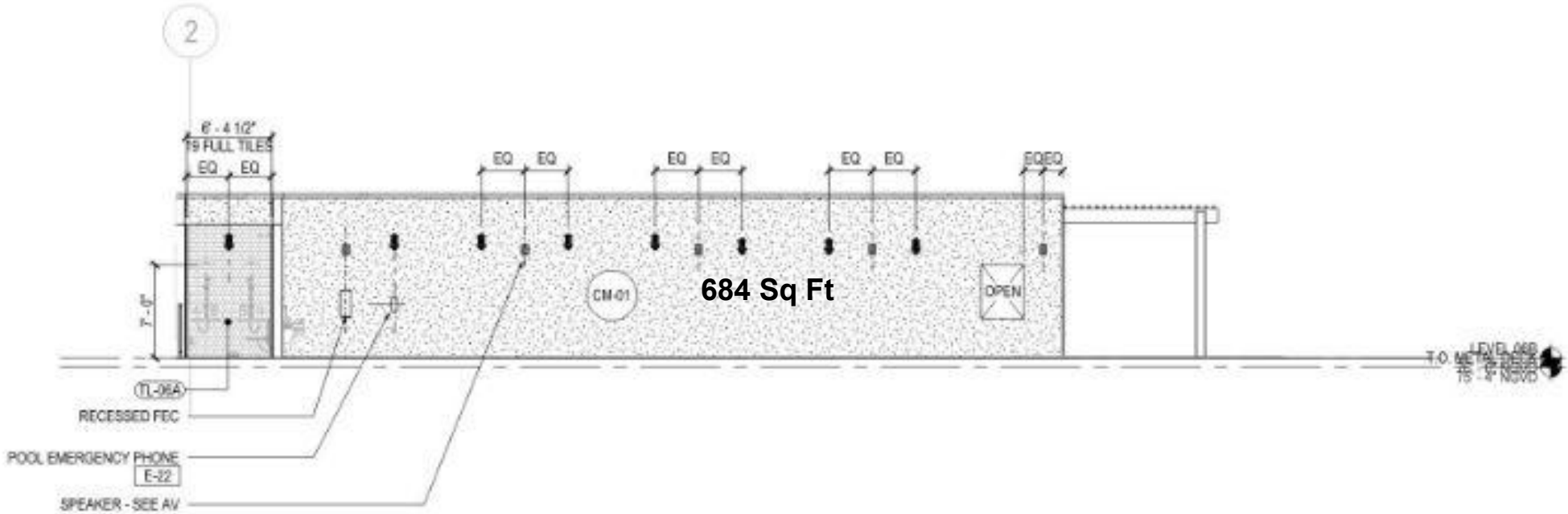
Aerial View (context)



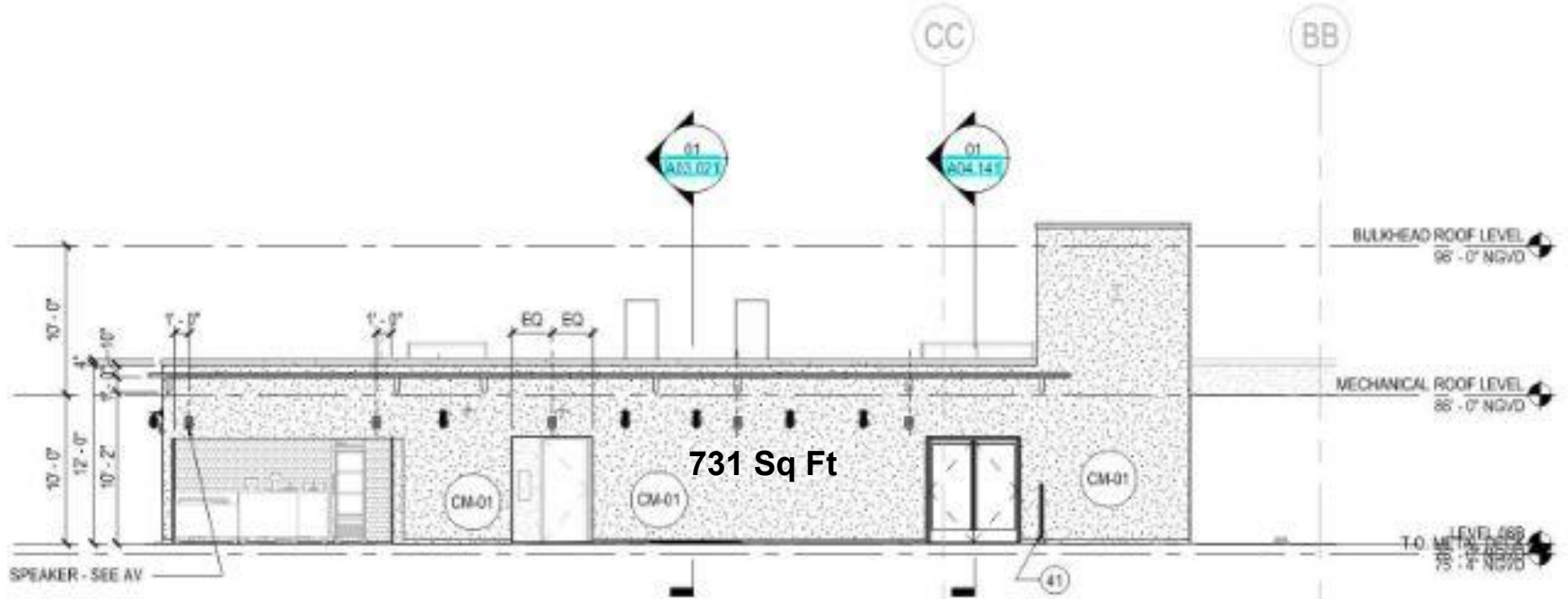
citizenM Miami South Beach - L6 Rooftop Plan



citizenM Miami South Beach - L6 Rooftop Elevations



01 EXTERIOR ELEVATION - ROOF DECK
SCALE: 1/8" = 1'-0"



02 EXTERIOR ELEVATION - ROOF DECK
SCALE: 1/8" = 1'-0"

assume vivid astro focus (avaf) / Eli Sudbrack

assume vivid astro focus was founded by Eli Sudbrack in 2001. *avaf* occasionally morphs into a duo with Paris-based artist Christophe Hamaide Pierson (b. Paris, 1973) and sometimes also into a collective, depending on the different projects they are involved in.

Personal expression and a lust for life are prominently emphasized in projects that are simultaneously rooted in politics of free speech, civil rights, classifications of class, gender and national identity. Infused by pop culture and political references, *avaf* is influenced by multiple sources and visual traits from art, culture, politics, sociology, comics and music, creating stunning and visually explosive mash-ups of transformed and re-contextualized references. *avaf* operates with a hedonistic spirit, and engages in frequent collaborations with musicians, designers, dancers and other artists, challenging conventional assumptions about authorship and the role of the artist's persona in society and the contemporary art world with their core beliefs as foundation: "share, generosity, contaminate, be contaminated, devour, be devoured, travel and spread".

avaf has been the subject of major exhibitions and public art projects around the world. These include The Faena Art Center, Buenos Aires, Argentina (2014) and Miami (2017); Museum of Contemporary Art (MCA), Santa Barbara, USA (2016); Sammlung Goetz, Munich, Germany (2016); São Paulo Bienal, São Paulo, Brazil (2008); Museum of Modern Art (MoMA), New York, USA (2008); Museum of Contemporary Art (MOT), Tokyo, Japan (2007); 1st Athens Biennale, Athens, Greece (2007); The Geffen Contemporary (MoCA), Los Angeles, USA (2005); The Whitney Biennial, New York, USA (2004); among others.

Their murals - among others - are showcased in **Miami at the Wynwood walls** and the **Wells Fargo building on Flagler Street**, installed during the **Miami Mural Festival /Miami Art Week in 2022**.



citizenM Miami South Beach - Exterior Artwork



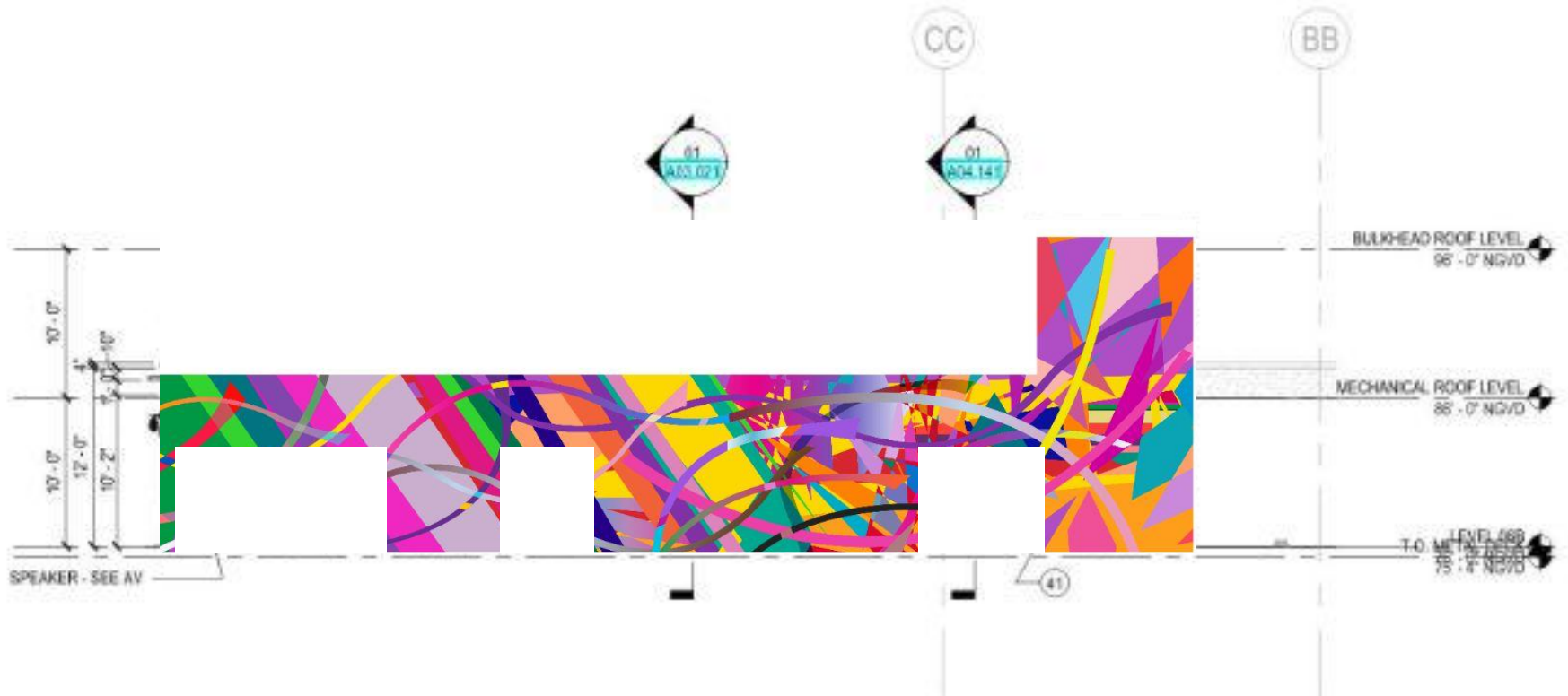
1415 Sq Ft Total

citizenM Miami South Beach - L6 Rooftop Elevations



01 EXTERIOR ELEVATION - ROOF DECK

SCALE: 1/8" = 1'-0"



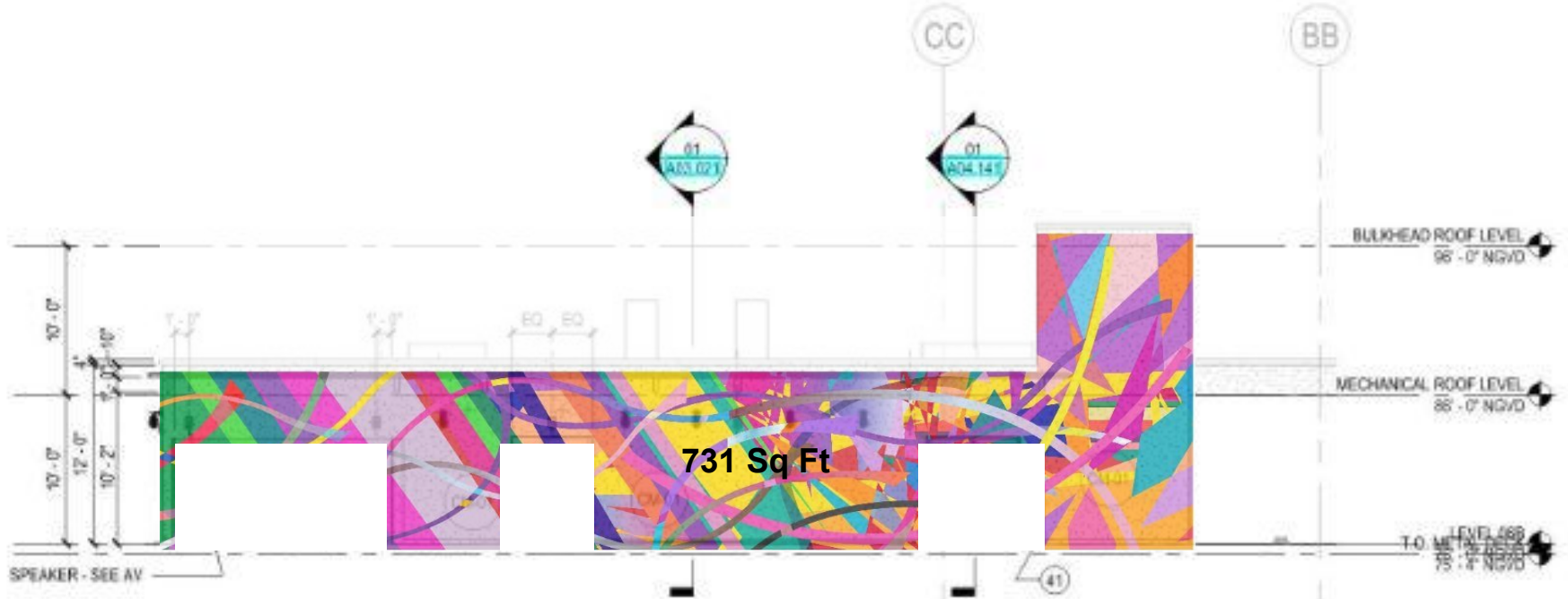
02 EXTERIOR ELEVATION - ROOF DECK

SCALE: 1/8" = 1'-0"

citizenM Miami South Beach - L6 Rooftop Elevations



01 EXTERIOR ELEVATION - ROOF DECK
SCALE: 1/8" = 1'-0"



02 EXTERIOR ELEVATION - ROOF DECK
SCALE: 1/8" = 1'-0"