

SHEET INDEX

SHEET #	SHEET TITLE						
L-0.00	COVER SHEET						
L-0.00A	SITE TABULATIONS						
L-0.01	VEGETATION SURVEY						
L-0.02	VEGETATION TREE LIST						
L-0.13	SITE STRATEGY PLAN						
L-1.00	RENDERED SITE PLAN						
L-1.01	OVERALL HARDSCAPE PLAN						
L-2.04	SECTIONS						
L-2.05	SECTIONS						
L-3.00	OVERALL TREE DISPOSITION PLAN						
L-3.01	TREE DISPOSITION LIST						
L-3.10	OVERALL LANDSCAPE PLAN						
L-3.11	OVERALL LANDSCAPE PLANT LIST						
L-3.20	LANDSCAPE REFERENCE IMAGES						
L-3.30	GENERAL PLANTING DETAILS						
L-4.10	OVERALL LANDSCAPE LIGHTING PLAN						
L-5.10	OVERALL IRRIGATION PLAN						

GRAPHIC LEGEND

SCOPE OF WORK

● HARDSCAPE, LANDSCAPE, LANDSCAPE LIGHTING, AND IRRIGATION WITHIN THE LIMITS DEFINED BY THE LIMITS OF SCOPE OF WORK.

NOTES

PLEASE SEE ARCHITECTURAL DRAWINGS FOR ADDITIONAL PROJECT INFORMATION

GENERAL ABBREVIATIONS

TW	TOP OF WALL	OA	OVERALL PLAN
TPW	TOP OF PLANTER WALL	CONC	CONCRETE
TB	TOP OF BENCH	LA	LANDSCAPE ARCHITECT
TC	TOP OF CURB	ARCH	ARCHITECT
FFE	FINISH FLOOR ELEVATION	STRUCT	STRUCTURE / STRUCTURAL
AFF	ABOVE FINISH FLOOR	ENG	ENGINEER
P.L.	PROPERTY LINE	DWGS	DRAWINGS
TG	TOP OF GRADE	TYP	TYPICAL
M	MONUMENT LINE	EXST	EXISTING
C	CENTER LINE	HSCP	HARDSCAPE
ML	MATCH LINE	LSCP	LANDSCAPE
EL	ENLARGED PLAN	PLNT	PLANTING

HPB FINAL SUBMITTAL

CITY OF MIAMI BEACH
LANDSCAPE LEGEND

INFORMATION REQUIRED TO BE PERMANENTLY AFFIXED TO PLANS

Zoning District **RM-3** Lot Area **48,708 SF** Acres **1.11**

OPEN SPACE

	REQUIRED/ ALLOWED	PROVIDED
A. Square feet of required Open Space as indicated on site plan: <i>48,708 sq. ft. x 30%</i>	14,612 SF Required	48,708 SF
B. Square feet of parking lot open space required as indicated on site plan: <i>Number of parking spaces n/a x 10 s.f. parking space =</i>	n/a	n/a
C. Total square feet of landscaped open space required: A+B=	14,612 SF Required	48,708 SF

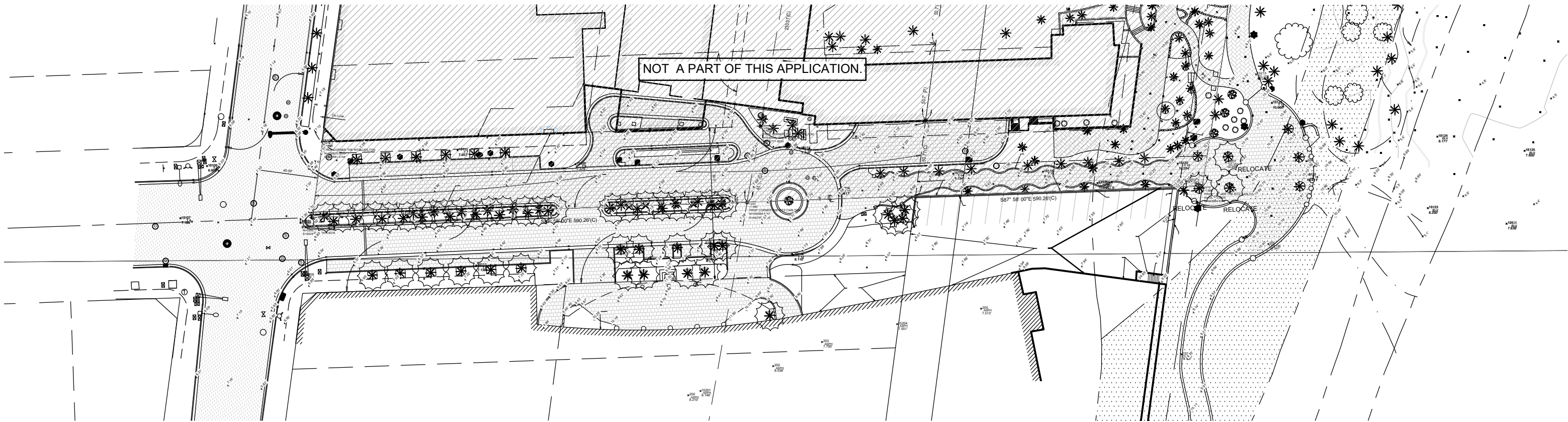
LAWN AREA CALCULATION

A. Square feet of landscaped open space required	14,612 SF Required	16,063 SF
B. Maximum lawn area (sod) permitted= <i>30% x 14,612 SF</i>	4,383 SF Allowed	1,053 SF
A. Number of trees required per lot or net lot acre, less existing number of trees meeting minimum requirements: <i>(28) trees required per acre - (0) existing trees =</i>	N/A Public ROW Improvement	43 Trees, 7 Palms (Additionally 22 Relocated Palms)
B. % Natives required: <i>(30) Number of trees provided x 30% =</i>	N/A	43
C. % Low maintenance / drought and salt tolerant required: <i>(30) Number of trees provided x 50%=</i>	N/A	43
D. Street Trees (maximum average spacing of 20' o.c.): <i>347' linear feet along street divided by 20'=</i>	N/A	0
E. Street tree species allowed directly beneath power lines: <i>(maximum average spacing of 20' o.c.):</i> <i>n/a linear feet along street divided by 20'=</i>	N/A	n/a

SHRUBS

A. Number of shrubs required: <i>(30) Sum of lot trees required x 12=</i>	N/A	TBD
B. % Native shrubs required: <i>(360) Number of shrubs provided x 50%=</i>	N/A	TBD
A. Number of large shrubs or small trees required: <i>(360) Number of required shrubs x 10%=</i>	N/A	TBD
B. % Native large shrubs or small trees required: <i>(36) Number of large shrubs or small trees provided x 50%=</i>	N/A	TBD





NOT A PART OF THIS APPLICATION.

NOTE: TREES SHOWN OUTSIDE OF THE AREA OF SCOPE ARE SHOWN FOR REFERENCE ONLY.

NOTE: SURVEY PERFORMED BY OTHERS. NFI NOT RESPONSIBLE FOR INACCURATE INFORMATION ON THIS PLAN OR SUBSEQUENT CORRESPONDING PLANS.

NOTE: SURVEYOR TREE LIST LOCATED ON SHEET L-0.02.

HPB FINAL SUBMITTAL



NATURALFICIAL

6915 Red Rd Suite 224, Coral Gables, FL 33143
T 786.717.6564

THIS ITEM HAS BEEN DIGITALLY SIGNED
AND SEALED BY PETER ANSELMO ON 04.17.2023

LINCOLN ROAD 100 BLOCK
MIAMI BEACH, FL 33139

VEGETATION SURVEY

SCALE: 1/64" = 1'-0"



DATE:
07/10/2023

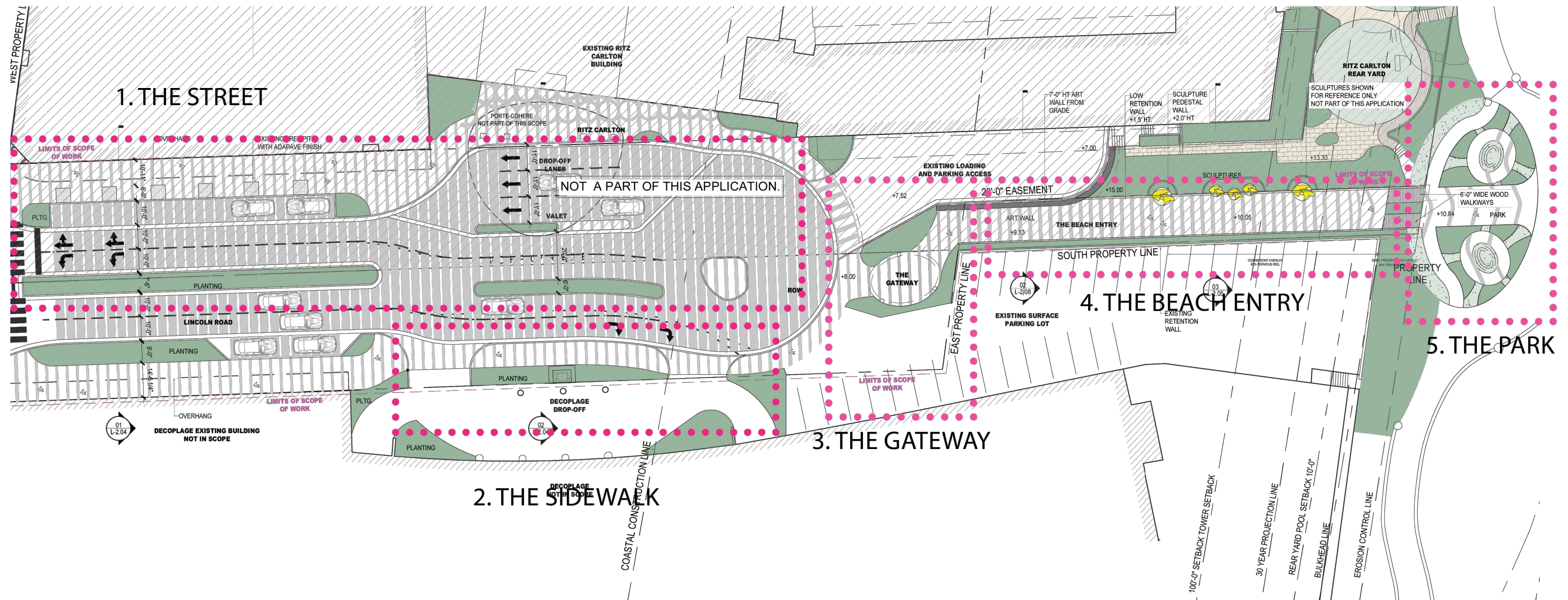
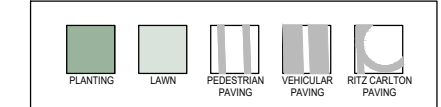
L-0.01

KEY #	ABRV.	BOTANICAL NAME	COMMON NAME	SIZE		
				DBH (IN.)	HT. (FT.)	SPD. (FT.)
8	CNU	<i>Cocos nucifera</i>	Coconut Palm	8.4	30	20
9	CNU	<i>Cocos nucifera</i>	Coconut Palm	8.4	30	20
10	CNU	<i>Cocos nucifera</i>	Coconut Palm	8.4	30	20
11	CNU	<i>Cocos nucifera</i>	Coconut Palm	8.4	30	20
12	CNU	<i>Cocos nucifera</i>	Coconut Palm	8.4	25	20
13	CNU	<i>Cocos nucifera</i>	Coconut Palm	8.4	20	20
14	CNU	<i>Cocos nucifera</i>	Coconut Palm	8.4	22	20
15	CNU	<i>Cocos nucifera</i>	Coconut Palm	8.4	22	20
16	CNU	<i>Cocos nucifera</i>	Coconut Palm	8.4	22	20
17	CNU	<i>Cocos nucifera</i>	Coconut Palm	7.2	18	20
18	CNU	<i>Cocos nucifera</i>	Coconut Palm	7.2	20	20
19	CNU	<i>Cocos nucifera</i>	Coconut Palm	7.2	20	20
20	CNU	<i>Cocos nucifera</i>	Coconut Palm	7.2	20	20
21	CNU	<i>Cocos nucifera</i>	Coconut Palm	7.2	18	20
22	CNU	<i>Cocos nucifera</i>	Coconut Palm	7.2	20	20
23	CNU	<i>Cocos nucifera</i>	Coconut Palm	8.4	22	20
24	CNU	<i>Cocos nucifera</i>	Coconut Palm	8.4	22	20
25	CNU	<i>Cocos nucifera</i>	Coconut Palm	8.4	22	20
26	CNU	<i>Cocos nucifera</i>	Coconut Palm	8.4	22	20
27	CNU	<i>Cocos nucifera</i>	Coconut Palm	8.4	22	20
28	CNU	<i>Cocos nucifera</i>	Coconut Palm	8.4	22	20
29	PCA	<i>Phoenix canariensis</i>	Canary Island Date Palm	15.6	22	20
30	PCA	<i>Phoenix canariensis</i>	Canary Island Date Palm	15.6	22	20
31	PCA	<i>Phoenix canariensis</i>	Canary Island Date Palm	15.6	22	20
32	PCA	<i>Phoenix canariensis</i>	Canary Island Date Palm	15.6	22	20
33	PCA	<i>Phoenix canariensis</i>	Canary Island Date Palm	15.6	22	20
34	PCA	<i>Phoenix canariensis</i>	Canary Island Date Palm	15.6	22	20
35	CNU	<i>Cocos nucifera</i>	Coconut Palm	7.2	30	20
36	CNU	<i>Cocos nucifera</i>	Coconut Palm	7.2	25	20
37	CNU	<i>Cocos nucifera</i>	Coconut Palm	7.2	25	20
38	CNU	<i>Cocos nucifera</i>	Coconut Palm	7.2	20	20
39	CNU	<i>Cocos nucifera</i>	Coconut Palm	7.2	20	20
40	CNU	<i>Cocos nucifera</i>	Coconut Palm	7.2	22	20
41	CNU	<i>Cocos nucifera</i>	Coconut Palm	7.2	18	20
42	CNU	<i>Cocos nucifera</i>	Coconut Palm	8.4	20	20
43	CNU	<i>Cocos nucifera</i>	Coconut Palm	7.2	25	20
44	CNU	<i>Cocos nucifera</i>	Coconut Palm	7.2	25	20
45	CNU	<i>Cocos nucifera</i>	Coconut Palm	7.2	18	20
46	CNU	<i>Cocos nucifera</i>	Coconut Palm	7.2	25	20
47	PCA	<i>Phoenix canariensis</i>	Canary Island Date Palm	23	22	20
48	PCA	<i>Phoenix canariensis</i>	Canary Island Date Palm	23	22	20
49	PCA	<i>Phoenix canariensis</i>	Canary Island Date Palm	23	22	20
50	PCA	<i>Phoenix canariensis</i>	Canary Island Date Palm	14	25	20
51	PCA	<i>Phoenix canariensis</i>	Canary Island Date Palm	14	25	20
52	PCA	<i>Phoenix canariensis</i>	Canary Island Date Palm	14	25	20
53	PCA	<i>Phoenix canariensis</i>	Canary Island Date Palm	14	25	20
54	PCA	<i>Phoenix canariensis</i>	Canary Island Date Palm	14	25	20
55	PCA	<i>Phoenix canariensis</i>	Canary Island Date Palm	14	25	20
56	PCA	<i>Phoenix canariensis</i>	Canary Island Date Palm	14	25	20
57	PCA	<i>Phoenix canariensis</i>	Canary Island Date Palm	14	25	20
58	PCA	<i>Phoenix canariensis</i>	Canary Island Date Palm	14	25	20
59	PCA	<i>Phoenix canariensis</i>	Canary Island Date Palm	14	25	20
60	PCA	<i>Phoenix canariensis</i>	Canary Island Date Palm	14	25	20
61	PCA	<i>Phoenix canariensis</i>	Canary Island Date Palm	14	25	20
62	PCA	<i>Phoenix canariensis</i>	Canary Island Date Palm	14	25	20
63	PCA	<i>Phoenix canariensis</i>	Canary Island Date Palm	14	25	20
93	PCA	<i>Phoenix canariensis</i>	Canary Island Date Palm			
94	PCA	<i>Phoenix canariensis</i>	Canary Island Date Palm			
95	PCA	<i>Phoenix canariensis</i>	Canary Island Date Palm			
96	PCA	<i>Phoenix canariensis</i>	Canary Island Date Palm			
97	PCA	<i>Phoenix canariensis</i>	Canary Island Date Palm			
98	PCA	<i>Phoenix canariensis</i>	Canary Island Date Palm			
99	CNU	<i>Cocos nucifera</i>	Coconut Palm			
100	CNU	<i>Cocos nucifera</i>	Coconut Palm			
101	CNU	<i>Cocos nucifera</i>	Coconut Palm			
102	CNU	<i>Cocos nucifera</i>	Coconut Palm			
103	CNU	<i>Cocos nucifera</i>	Coconut Palm			
104	PRO	<i>Phoenix roebelenii</i>	Pygmy Date Palm			
105	PRO	<i>Phoenix roebelenii</i>	Pygmy Date Palm			
106	PRO	<i>Phoenix roebelenii</i>	Pygmy Date Palm			
107	PRO	<i>Phoenix roebelenii</i>	Pygmy Date Palm			
108	CNU	<i>Cocos nucifera</i>	Coconut Palm			
109	CNU	<i>Cocos nucifera</i>	Coconut Palm			
110	CNU	<i>Cocos nucifera</i>	Coconut Palm			
111	CNU	<i>Cocos nucifera</i>	Coconut Palm			
112	UNK	Unknown				

NOTE: TREES SHOWN OUTSIDE OF THE AREA OF SCOPE ARE SHOWN FOR REFERENCE ONLY.



GRAPHIC LEGEND



HPB FINAL SUBMITTAL



NATURALFICIAL
 6915 Red Rd Suite 224, Coral Gables, FL 33143
 T 786.717.6564

THIS ITEM HAS BEEN DIGITALLY SIGNED
 AND SEALED BY PETER ANSELMO ON 04.17.2023

LINCOLN ROAD 100 BLOCK
 MIAMI BEACH, FL 33139

SITE STRATEGY PLAN
 SCALE: 1/16" = 1'-0"

DATE:
 07/10/2023

L-0.13



NATURALFICIAL

6915 Red Rd Suite 224, Coral Gables, FL 33143
T 786.717.6564

THIS ITEM HAS BEEN DIGITALLY SIGNED
AND SEALED BY PETER ANSELMO ON 04.17.2023

LINCOLN ROAD 100 BLOCK
MIAMI BEACH, FL 33139

RENDERED SITE PLAN

SCALE: NTS



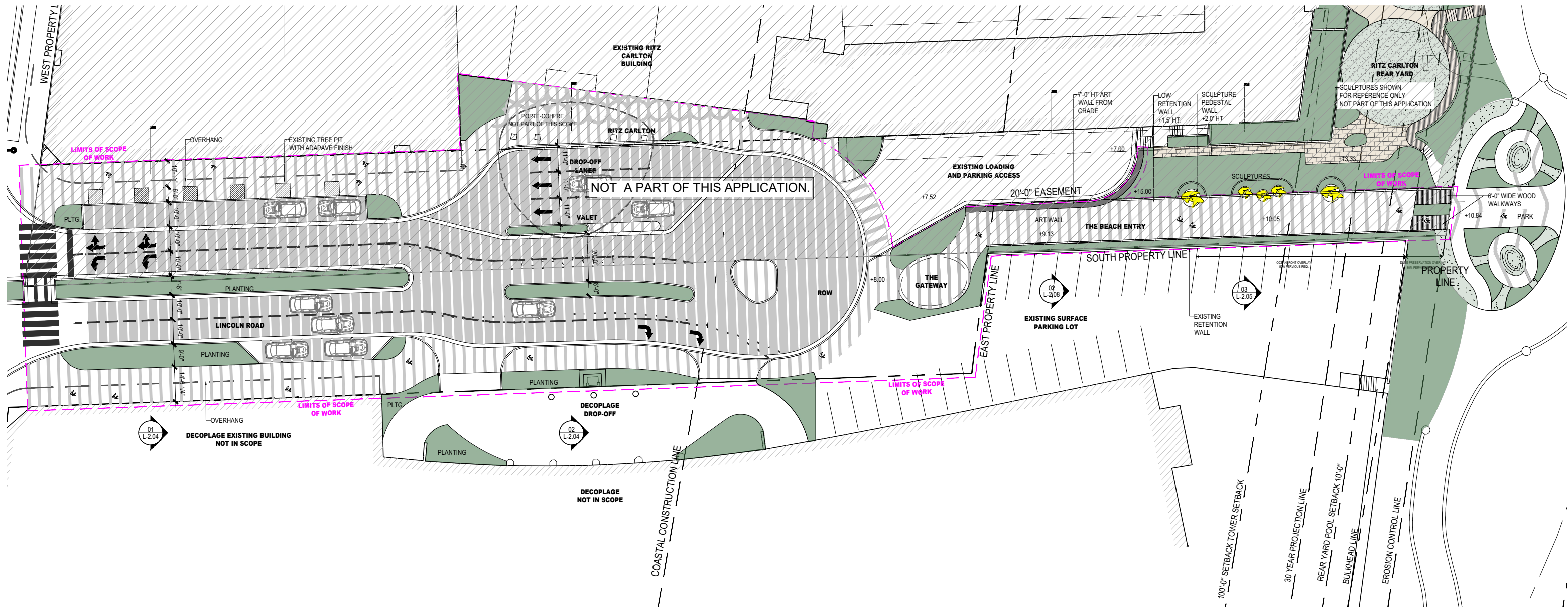
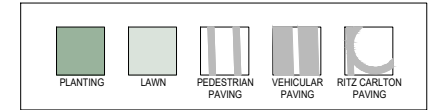
DATE:
07/10/2023

L-1.00

NOTE: ALL PEDESTRIAN PAVERS WITHIN THE UTILITY EASEMENT AND PUBLIC RIGHT OF WAY MUST BE SLIP RESISTANT

NOTE: DRIVEWAYS AND PARKING AREAS THAT ARE OPEN TO THE SKY WITHIN ANY REQUIRED YARD SHALL BE COMPOSED OF POROUS PAVEMENT OR SHALL HAVE A HIGH ALBEDO SURFACE CONSISTING OF A DURABLE MATERIAL OR SEALANT, AS DEFINED IN SECTION 114-10F OF THIS CODE.

GRAPHIC LEGEND



HPB FINAL SUBMITTAL



NATURALFICIAL

6915 Red Rd Suite 224, Coral Gables, FL 33143
T 786.717.6564

THIS ITEM HAS BEEN DIGITALLY SIGNED AND SEALED BY PETER ANSELMO ON 04.17.2023

LINCOLN ROAD 100 BLOCK
MIAMI BEACH, FL 33139

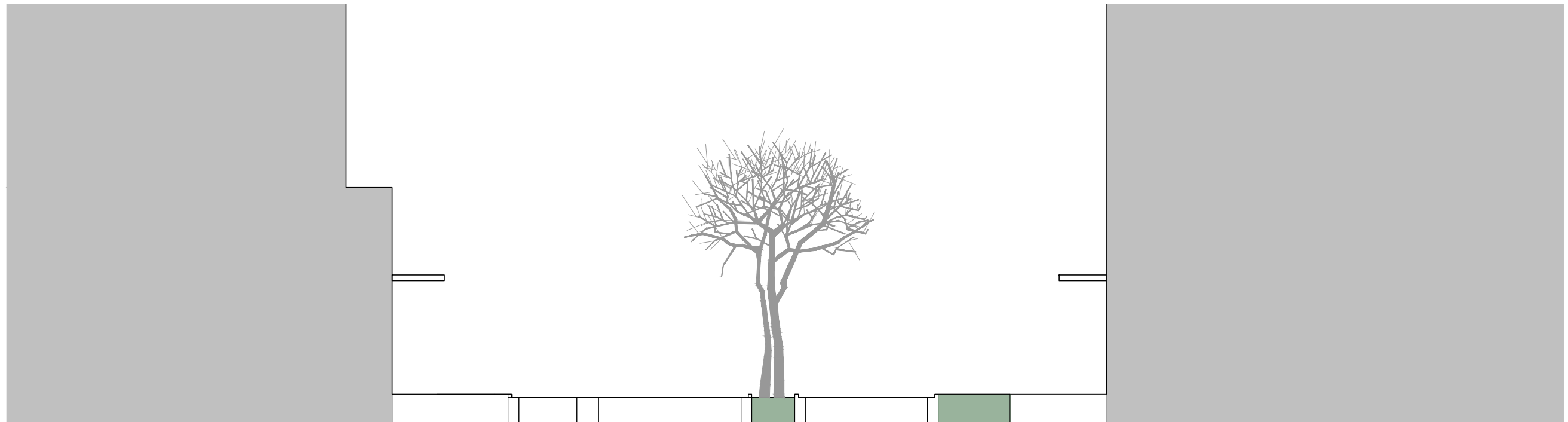
OVERALL HARDSCAPE PLAN

SCALE: 1/64" = 1'-0"



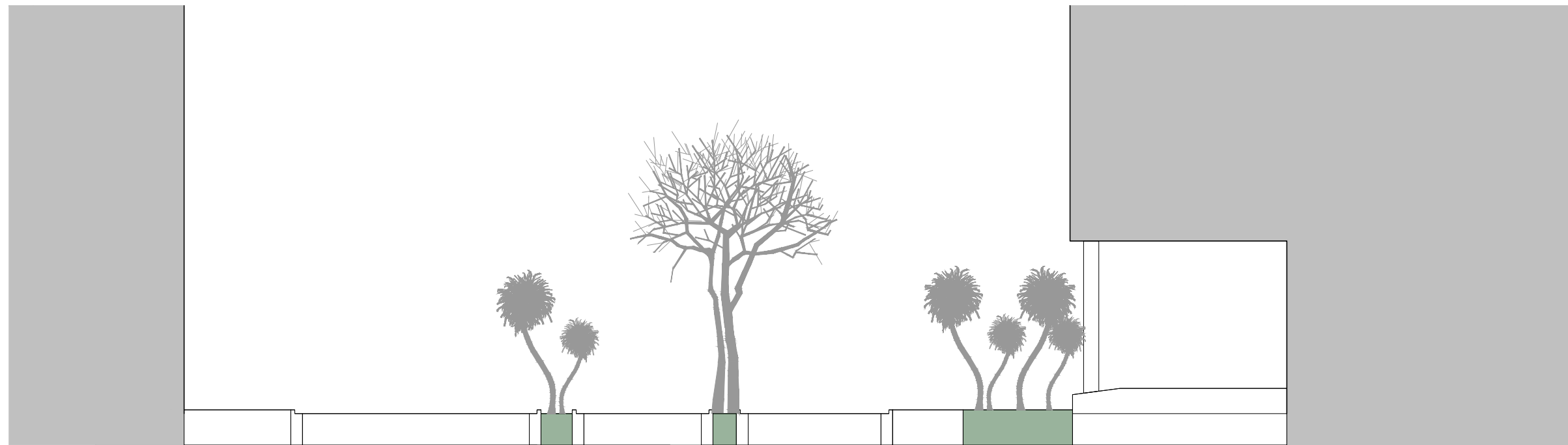
DATE:
07/10/2023

L-1.01



01 SECTION 01
SCALE: 1/16" = 1'-0"

SIDEWALK 16'-11" PARKING 10'-0" DOUBLE LANE 20'-0" MEDIAN 7'-6" DOUBLE LANE 20'-0" PLANTER 9'-0" SIDEWALK 14'-6"



02 SECTION 02
SCALE: 1/16" = 1'-0"

SIDEWALK 15'-0" RITZ DROP OFF 33'-0" MEDIAN 3'-0" DOUBLE LANE 20'-0" MEDIAN 6'-0" DOUBLE LANE 19'-6" SIDEWALK 10'-0" PLANTING 11'-10" DROP OFF 27'-6"



NATURALFICIAL
6915 Red Rd Suite 224, Coral Gables, FL 33143
T 786.717.6564

THIS ITEM HAS BEEN DIGITALLY SIGNED
AND SEALED BY PETER ANSELMO ON 04.17.2023

LINCOLN ROAD 100 BLOCK
MIAMI BEACH, FL 33139

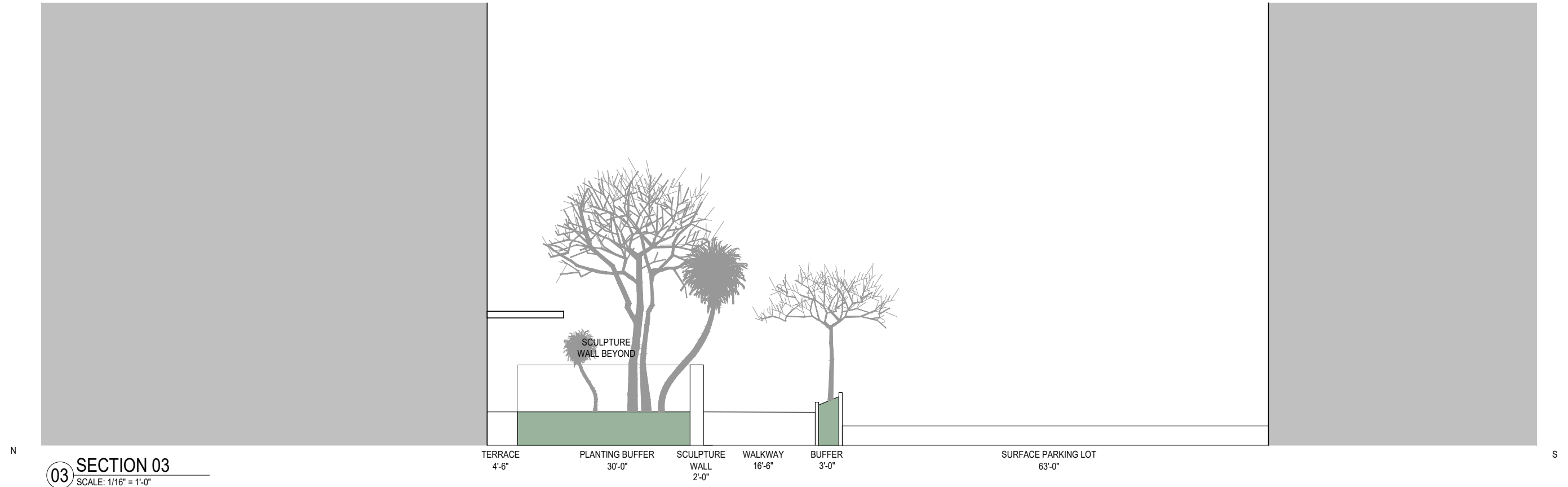
SECTIONS

SCALE: 1/16" = 1'-0"



DATE:
07/10/2023

L-2.04



NATURALFICIAL

6915 Red Rd Suite 224, Coral Gables, FL 33143
T 786.717.6564

THIS ITEM HAS BEEN DIGITALLY SIGNED
AND SEALED BY PETER ANSELMO ON 04.17.2023

LINCOLN ROAD 100 BLOCK
MIAMI BEACH, FL 33139

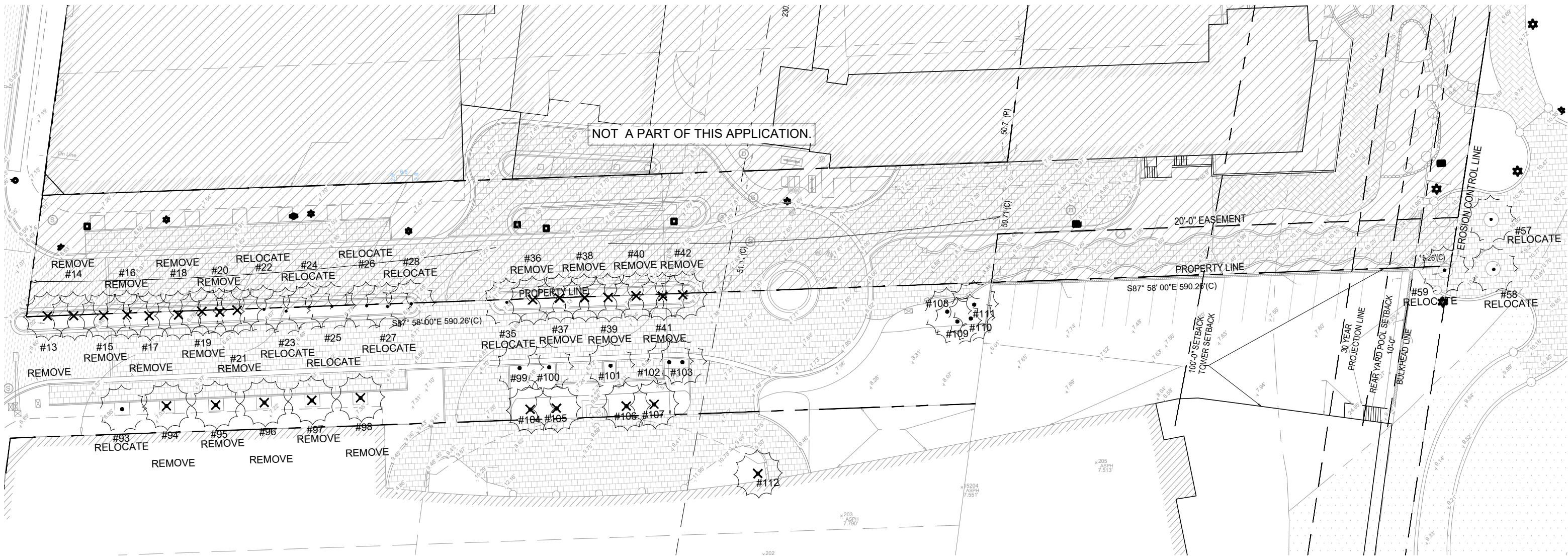
SECTIONS

SCALE: 1/16" = 1'-0"



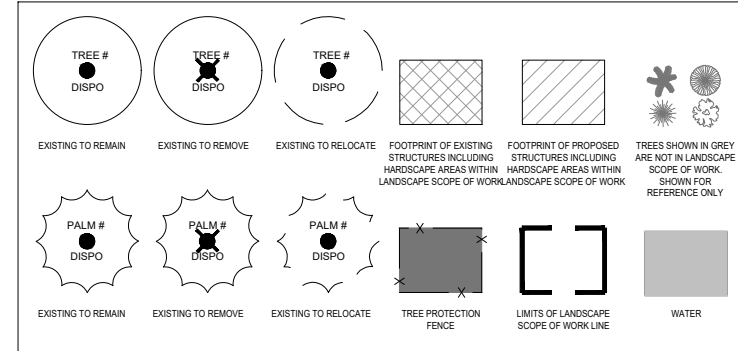
DATE:
07/10/2023

L-2.05



NOT A PART OF THIS APPLICATION.

TREE DISPOSITION | GRAPHIC LEGEND



TREE DISPOSITION | GRAPHIC LEGEND

- EXISTING TREES DESIGNATED TO REMAIN SHALL BE PROTECTED DURING ALL CONSTRUCTION PHASES. ANY TREES OR SHRUBS DESIGNATED TO REMAIN, WHICH ARE SCARRED OR DESTROYED WILL BE REPLACED AT THE CONTRACTOR'S EXPENSE, WITH SIMILAR SPECIES, SIZE AND QUALITY.
- REFER TO AND COORDINATE WITH TREE DISPOSITION LIST.
- OBTAIN ALL REQUIRED TREE REMOVAL PERMITS PRIOR TO THE COMMENCEMENT OF WORK.
- GENERAL CONTRACTOR SHALL BE RESPONSIBLE TO VERIFY ALL EXISTING TREES PRIOR TO COMMENCEMENT OF WORK.
- GENERAL CONTRACTOR SHALL BE RESPONSIBLE TO PROTECT ALL ADJACENT PORTIONS OF THE SITE AND BUILDING NOT PART OF PROPOSED SCOPE OF WORK.
- GENERAL CONTRACTOR SHALL BE RESPONSIBLE TO PROPERLY SECURE ALL PORTIONS OF THE SITE DURING ALL DEMOLITION PHASES.
- GENERAL CONTRACTOR SHALL BE RESPONSIBLE TO OBTAIN PERMIT REQUIRED FOR TEMPORARY FENCING.
- LANDSCAPE CONTRACTOR TO PROVIDE TEMPORARY IRRIGATION AS NEEDED, REFER TO LANDSCAPE PLANS FOR FURTHER INFORMATION.
- TREES SHOWN IN GREY ARE NOT IN LANDSCAPE SCOPE OF WORK. SHOWN FOR REFERENCE ONLY.

NOTE: TREE DISPOSITION LIST LOCATED ON SHEET L-3.01.

HPB FINAL SUBMITTAL



NATURALFICIAL

6915 Red Rd Suite 224, Coral Gables, FL 33143
T 786.717.6564

THIS ITEM HAS BEEN DIGITALLY SIGNED
AND SEALED BY PETER ANSELMO ON 04.17.2023

LINCOLN ROAD 100 BLOCK
MIAMI BEACH, FL 33139

OVERALL TREE DISPOSITION PLAN

SCALE: 1" = 40'-0"



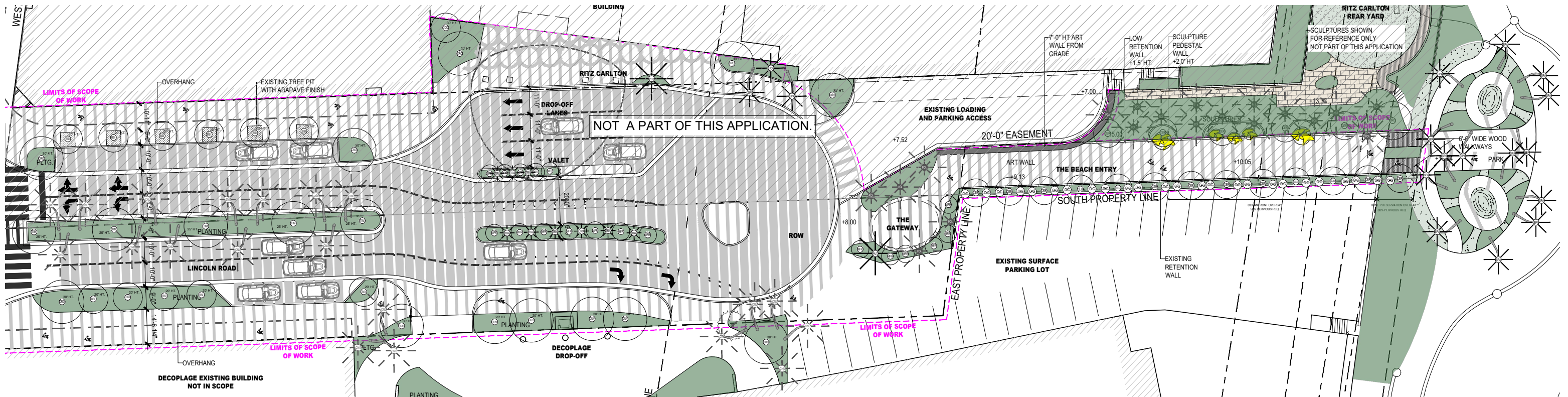
DATE:
07/10/2023

L-3.00

KEY #	ABRV.	BOTANICAL NAME	COMMON NAME	SIZE			DISPOSITION			ON SITE	MITIGATION REQ'D
				DBH. (IN.)	HT. (FT.)	SPD. (FT.)	REMAIN	REMOVE	RELOCATE ON SITE		
13	CNU	<i>Cocos nucifera</i>	Coconut Palm	8.4	20	20			X	Yes	No
14	CNU	<i>Cocos nucifera</i>	Coconut Palm	8.4	22	20			X	Yes	No
15	CNU	<i>Cocos nucifera</i>	Coconut Palm	8.4	22	20			X	Yes	No
16	CNU	<i>Cocos nucifera</i>	Coconut Palm	8.4	22	20			X	Yes	No
17	CNU	<i>Cocos nucifera</i>	Coconut Palm	7.2	18	20			X	Yes	No
18	CNU	<i>Cocos nucifera</i>	Coconut Palm	7.2	20	20			X	Yes	No
19	CNU	<i>Cocos nucifera</i>	Coconut Palm	7.2	20	20			X	Yes	No
20	CNU	<i>Cocos nucifera</i>	Coconut Palm	7.2	20	20			X	Yes	No
21	CNU	<i>Cocos nucifera</i>	Coconut Palm	7.2	18	20			X	Yes	No
22	CNU	<i>Cocos nucifera</i>	Coconut Palm	7.2	20	20			X	Yes	No
23	CNU	<i>Cocos nucifera</i>	Coconut Palm	8.4	22	20			X	Yes	No
24	CNU	<i>Cocos nucifera</i>	Coconut Palm	8.4	22	20			X	Yes	No
25	CNU	<i>Cocos nucifera</i>	Coconut Palm	8.4	22	20			X	Yes	No
26	CNU	<i>Cocos nucifera</i>	Coconut Palm	8.4	22	20			X	Yes	No
27	CNU	<i>Cocos nucifera</i>	Coconut Palm	8.4	22	20			X	Yes	No
28	CNU	<i>Cocos nucifera</i>	Coconut Palm	8.4	22	20			X	Yes	No
35	CNU	<i>Cocos nucifera</i>	Coconut Palm	7.2	30	20			X	Yes	No
36	CNU	<i>Cocos nucifera</i>	Coconut Palm	7.2	25	20		X		Yes	Yes
37	CNU	<i>Cocos nucifera</i>	Coconut Palm	7.2	25	20		X		Yes	Yes
38	CNU	<i>Cocos nucifera</i>	Coconut Palm	7.2	20	20		X		Yes	Yes
39	CNU	<i>Cocos nucifera</i>	Coconut Palm	7.2	20	20		X		Yes	Yes
40	CNU	<i>Cocos nucifera</i>	Coconut Palm	7.2	22	20		X		Yes	Yes
41	CNU	<i>Cocos nucifera</i>	Coconut Palm	7.2	18	20		X		Yes	Yes
42	CNU	<i>Cocos nucifera</i>	Coconut Palm	8.4	20	20		X		Yes	Yes
57	PCA	<i>Phoenix canariensis</i>	Canary Island Date Palm	14	25	20			X	Yes	No
58	PCA	<i>Phoenix canariensis</i>	Canary Island Date Palm	14	25	20			X	Yes	No
59	PCA	<i>Phoenix canariensis</i>	Canary Island Date Palm	14	25	20			X	Yes	No
60	PCA	<i>Phoenix canariensis</i>	Canary Island Date Palm	14	25	20			X	Yes	No
93	PCA	<i>Phoenix canariensis</i>	Canary Island Date Palm						X	Yes	No
94	PCA	<i>Phoenix canariensis</i>	Canary Island Date Palm						X	Yes	No
95	PCA	<i>Phoenix canariensis</i>	Canary Island Date Palm						X	Yes	No
96	PCA	<i>Phoenix canariensis</i>	Canary Island Date Palm						X	Yes	No
97	PCA	<i>Phoenix canariensis</i>	Canary Island Date Palm						X	Yes	No
98	PCA	<i>Phoenix canariensis</i>	Canary Island Date Palm						X	Yes	No
99	CNU	<i>Cocos nucifera</i>	Coconut Palm						X	Yes	No
100	CNU	<i>Cocos nucifera</i>	Coconut Palm						X	Yes	No
101	CNU	<i>Cocos nucifera</i>	Coconut Palm						X	Yes	No
102	CNU	<i>Cocos nucifera</i>	Coconut Palm						X	Yes	No
103	CNU	<i>Cocos nucifera</i>	Coconut Palm						X	Yes	No
104	PRO	<i>Phoenix roebelenii</i>	Pygmy Date Palm					X		Yes	Yes
105	PRO	<i>Phoenix roebelenii</i>	Pygmy Date Palm					X		Yes	Yes
106	PRO	<i>Phoenix roebelenii</i>	Pygmy Date Palm					X		Yes	Yes
107	PRO	<i>Phoenix roebelenii</i>	Pygmy Date Palm					X		Yes	Yes
108	CNU	<i>Cocos nucifera</i>	Coconut Palm						X	Yes	No
109	CNU	<i>Cocos nucifera</i>	Coconut Palm						X	Yes	No
110	CNU	<i>Cocos nucifera</i>	Coconut Palm						X	Yes	No
111	CNU	<i>Cocos nucifera</i>	Coconut Palm						X	Yes	No
112	UNK	Unknown						X		Yes	Yes
MITIGATION SUMMARY											
Total Number of on site and R.O.W Trees:				0							
Total Number of on site and R.O.W Palms:				47							
Total Number of Trees to Remain:				0							
Total Number of Trees to Remove:				0							
Total Number of Trees to Relocate:				0							
Total Number of Palms to Remain:				5							
Total Number of Palms to Remove:				12							
Total Number of Palms to Relocate:				36							
CITY OF MIAMI BEACH- (SEC. 46-56) DEFINITIONS - 1.4 DEFINITIONS OF LANDSCAPE REQUIREMENTS											
Specimen tree: A tree with an individual trunk that has a DBH of 12 inches or greater, or any multiple-trunk tree in which the sum of the diameters of all the trunks at DBH is 12 inches or greater. Includes palm trees with an overall height of ten feet or											
CITY OF MIAMI BEACH- TREE REPLACEMENT CHART (SEC. 46-61.)											
Total Palms Removed		Total number of replacement trees required (where each Replacement Tree is a minimum of 2" DBH x 6' spread in Canopy x 12' in height)			Total number of replacement trees required (where each Replacement Tree is a minimum of 4" DBH x 8' spread in Canopy x 16' in height)			Contribution to Tree Trust Fund			
12		12			6			\$12,000			

NOTE: MISSING TREE SPECS TO BE DETERMINED AT TIME OF PERMITTING.



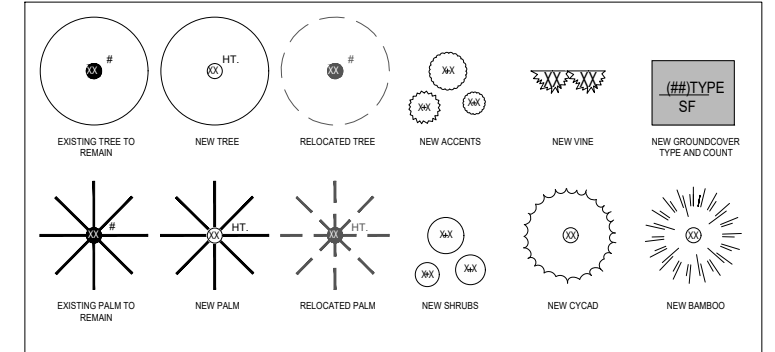


NOTE: THERE SHALL BE NO IMPACT ON DUNE SYSTEM.

NOTE: ALL LANDSCAPE WORK NORTH OF SOUTH PROPERTY LINE IS PART OF THE PRIVATE APPLICATION AND IS SHOWN FOR REFERENCE ONLY.

NOTE: SEE SHEET L-3.11 FOR LANDSCAPE LIST

LANDSCAPE PLAN | GRAPHIC LEGEND



HPB FINAL SUBMITTAL



NATURALFICIAL

6915 Red Rd Suite 224, Coral Gables, FL 33143
T 786.717.6564

THIS ITEM HAS BEEN DIGITALLY SIGNED
AND SEALED BY PETER ANSELMO ON 04.17.2023

LINCOLN ROAD 100 BLOCK
MIAMI BEACH, FL 33139

OVERALL LANDSCAPE PLAN

SCALE: 1" = 40'-0"

DATE:
07/10/2023

L-3.10

NATURALFICIAL, INC. 100 LINCOLN ROAD ROW PLANT LIST: 2023.06.14								
QTY	ABRV.	BOTANICAL NAME	COMMON NAME	SPECIFICATIONS	FL. NATIVE		DROUGHT TOLERANT	
					YES	NO	YES	NO
TREES								
12	BSI	<i>Bursera simaruba</i>	Gumbo Limbo	25' Ht.	X		X	
18	CER	<i>Conocarpus erectus</i>	Green Buttonwood	20' Ht.	X		X	
1	COD	<i>Cananga odorata</i>	Ylang-Yland	30' Ht.		X	X	
9	CRO	<i>Clusia rosea</i>	Autograph Tree	30' Ht. Specimen, Multi-branch	X		X	
18	MFR	<i>Myrcianthes fragrans</i>	Simpson Stopper	12'-15' Multi-Trunk	X		X	
4	CUV	<i>Coccoloba uvifera</i>	Sea Grape	20' Ht.	X		X	
5	TIM	<i>Tabebuia impetiginosus</i>	Pink Trumpet Tree	25' Ht.		X	X	
PALMS								
1	PSY	<i>Phoenix sylvestris</i>	Sylvester Palm	35' Ht., Multi-trunk		X	X	
1	PUT	<i>Pandanus utilis</i>	Screw Pine	20' Ht.		X	X	
3	SPA	<i>Sabal palmetto</i>	Sabal Palm	25'- 35' Ht., Character Trunks	X		X	
9	TRA	<i>Thrinax radiata</i>	Florida Thatch Palm	10'-14' Ht. Staggered	X		X	

NATURALFICIAL, INC. BEACHWALK PLANT LIST: 2023.05.08								
QTY	ABRV.	BOTANICAL NAME	COMMON NAME	SPECIFICATIONS	FL. NATIVE		DROUGHT TOLERANT	
					YES	NO	YES	NO
PALMS								
14	SPA	<i>Sabal palmetto</i>	Sabal Palm	25'- 35' Ht., Character Trunks	X		X	

NOTE: 98% OF PROPOSED PLANTS MEET FLORIDA FRIENDLY CRITERIA



TREES



Bursera simaruba
Gumbo Limbo



Conocarpus erectus
Green Buttonwood



Clusia rosea
Autograph Tree



Myrcianthes fragrans
Simpson Stopper



Coccoloba uvifera
Seagrape

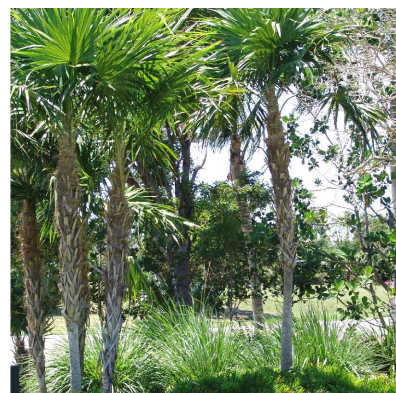


Tabebuia impetiginosus
Pink Trumpet Tree

PALMS



Pandanus utilis
Screw Pine



Thrinax radiata
Florida Thatch Palm



NATURALFICIAL

6915 Red Rd Suite 224, Coral Gables, FL 33143
T 786.717.6564

THIS ITEM HAS BEEN DIGITALLY SIGNED
AND SEALED BY PETER ANSELMO ON 04.17.2023

LINCOLN ROAD 100 BLOCK
MIAMI BEACH, FL 33139

LANDSCAPE REFERENCE IMAGES

SCALE: NTS

DATE:
07/10/2023

L-3.20



NOTE: LIGHTING PLAN TO BE DEVELOPED IN SUBSEQUENT SUBMITTALS.

HPB FINAL SUBMITTAL



NATURALFICIAL

6915 Red Rd Suite 224, Coral Gables, FL 33143
T 786.717.6564

THIS ITEM HAS BEEN DIGITALLY SIGNED AND SEALED BY PETER ANSELMO ON 04.17.2023

LINCOLN ROAD 100 BLOCK
MIAMI BEACH, FL 33139

OVERALL LANDSCAPE LIGHTING PLAN

SCALE: NTS



DATE:
07/10/2023

L-4.10



NOTE: IRRIGATION PLAN TO BE DEVELOPED IN SUBSEQUENT SUBMITTALS.

HPB FINAL SUBMITTAL



NATURALFICIAL

6915 Red Rd Suite 224, Coral Gables, FL 33143
T 786.717.6564

THIS ITEM HAS BEEN DIGITALLY SIGNED AND SEALED BY PETER ANSELMO ON 04.17.2023

LINCOLN ROAD 100 BLOCK
MIAMI BEACH, FL 33139

OVERALL IRRIGATION PLAN

SCALE: NTS



DATE:
07/10/2023

L-5.10