



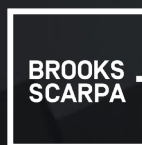
# MIAMI BEACH 41 STREET CORRIDOR REVITALIZATION PROJECT

333 41st Street  
Miami Beach, FL 33140

DRB23-0918

## DRB Presentation

5 July 2023



MIAMIBEACH

## PROJECT SCOPE & SCHEDULE

### THE PROJECT SCOPE INCLUDES:

- **Branded pavement** along the 41st Street corridor.
- A 7ft minimum **clear barrier-free path of travel** is provided throughout the corridor.
- **2 Royal Palm trees removed** (no more than 15% total removal). 206 Royal Palms in project area.
- **New canopy trees incorporated to increase shade** and comfortability along the corridor.
- **Enhanced plantings incorporate native and drought tolerant species.**
- **10 on-street parking spaces removed** along 41st Street. 53 remaining on-street parking spaces.
- **No on-street parking spaces** are removed along side-streets.
- **On-street parking has textured paving.**
- **No on-street parking to be removed west of Biscayne Waterway.**
- **Incorporation of bicycle facilities** on Prairie Avenue and Royal Palm Avenue.
- **Integrated seat walls** are designed to **enhance expanded sidewalk areas.**
- **Lighting will be upgraded within the corridor.**
- **Incorporation of gateway elements and plaza features.**

### PROJECT PROPOSED SCHEDULE:

- |                        |   |
|------------------------|---|
| <b>1. Design</b>       | Targeted completion by Spring 2024                              |
| <b>2. Permitting</b>   | Targeted completion by Summer 2024                              |
| <b>3. Procurement</b>  | Targeted completion by Winter 2024                              |
| <b>4. Construction</b> | Targeted to start in Winter 2024 with completion by Summer 2026 |

### DOES NOT INCLUDE:

- **Traffic Signalization Changes** or reworking of traffic patterns.
- **Underground utility improvements.**
- **Drainage improvements.**

# EXISTING SITE PLAN



## FROM ALTON ROAD TO PINE TREE DRIVE

PROJECT BOUNDARY AS OUTLINED AND PROVIDED BY THE CITY OF MIAMI BEACH

# EXISTING CHALLENGES



LOOSE CONCRETE PAVERS



INAPPROPRIATE LANDSCAPING



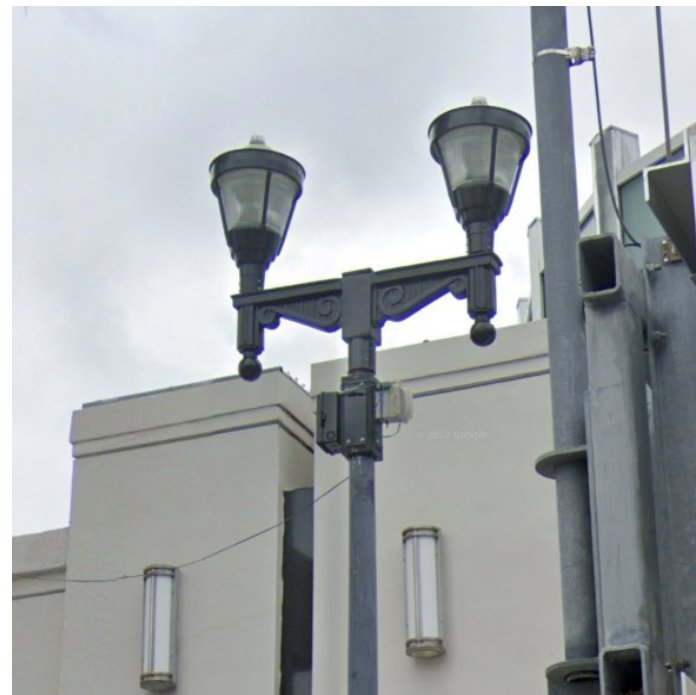
ACCESSIBILITY ISSUES



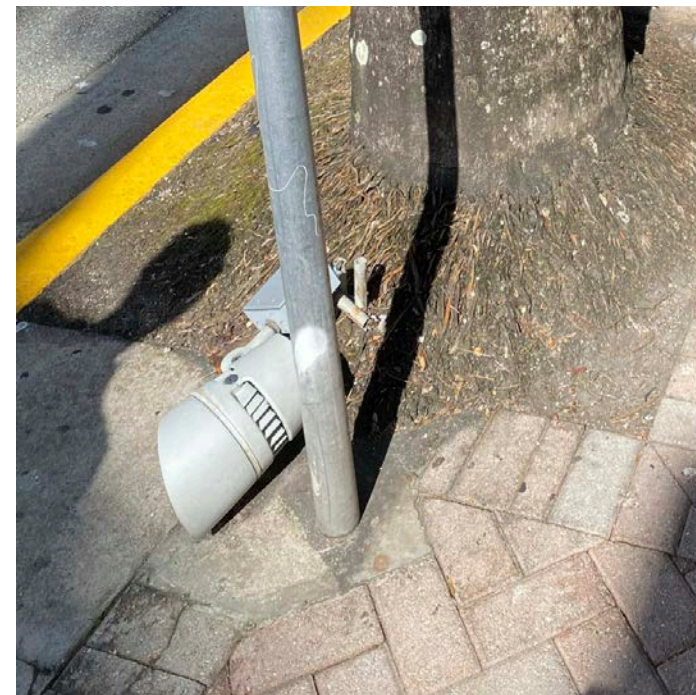
AGED PAVING



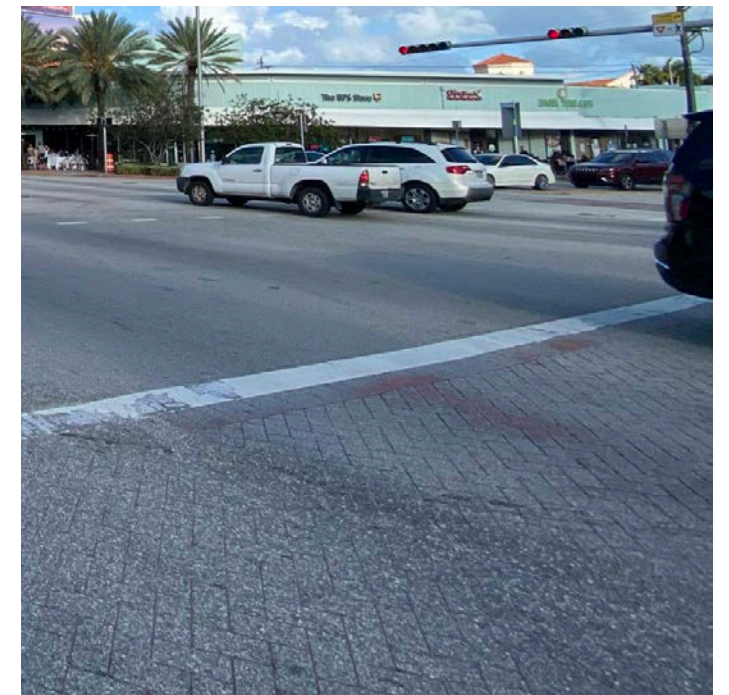
UNSAFE WIRING



OUTDATED STREET LAMPS



BROKEN LIGHT FIXTURES



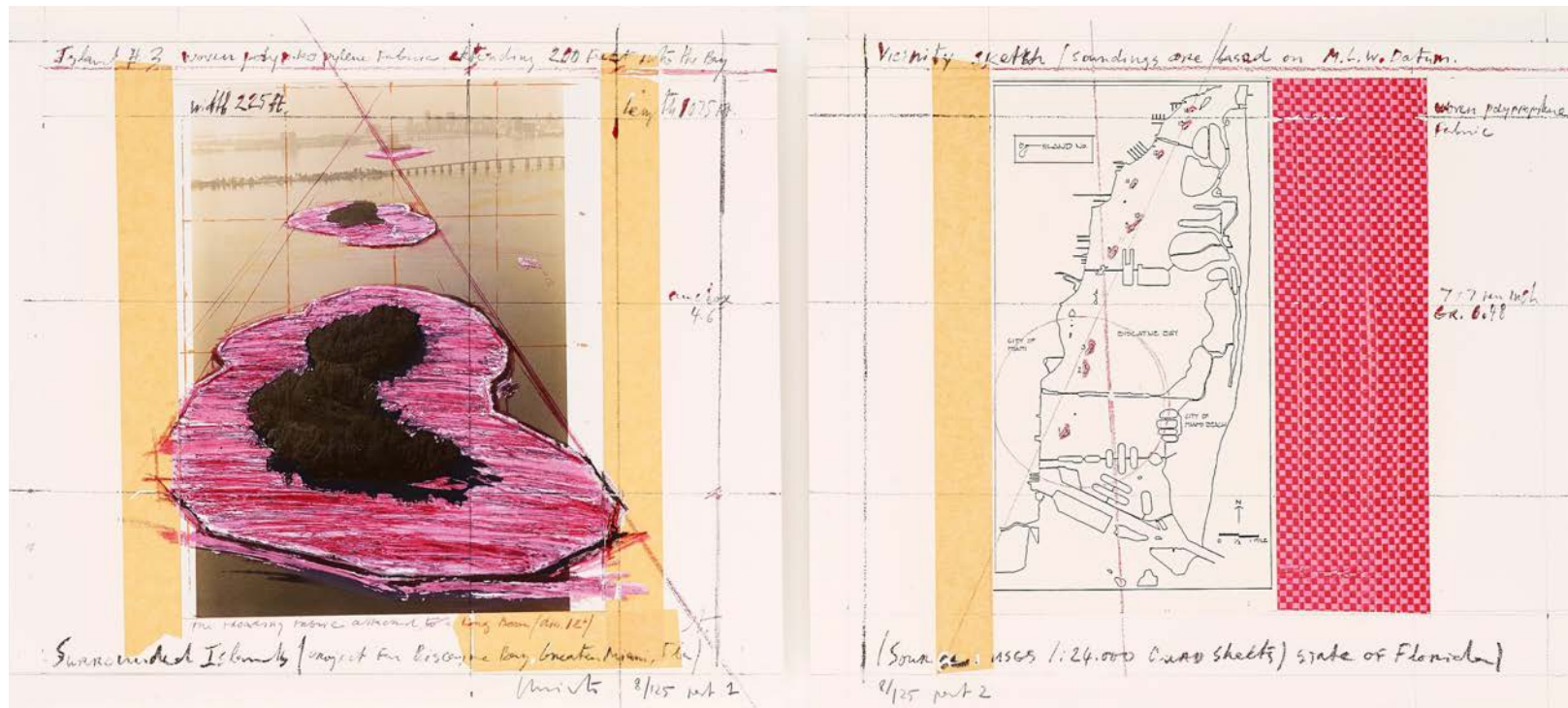
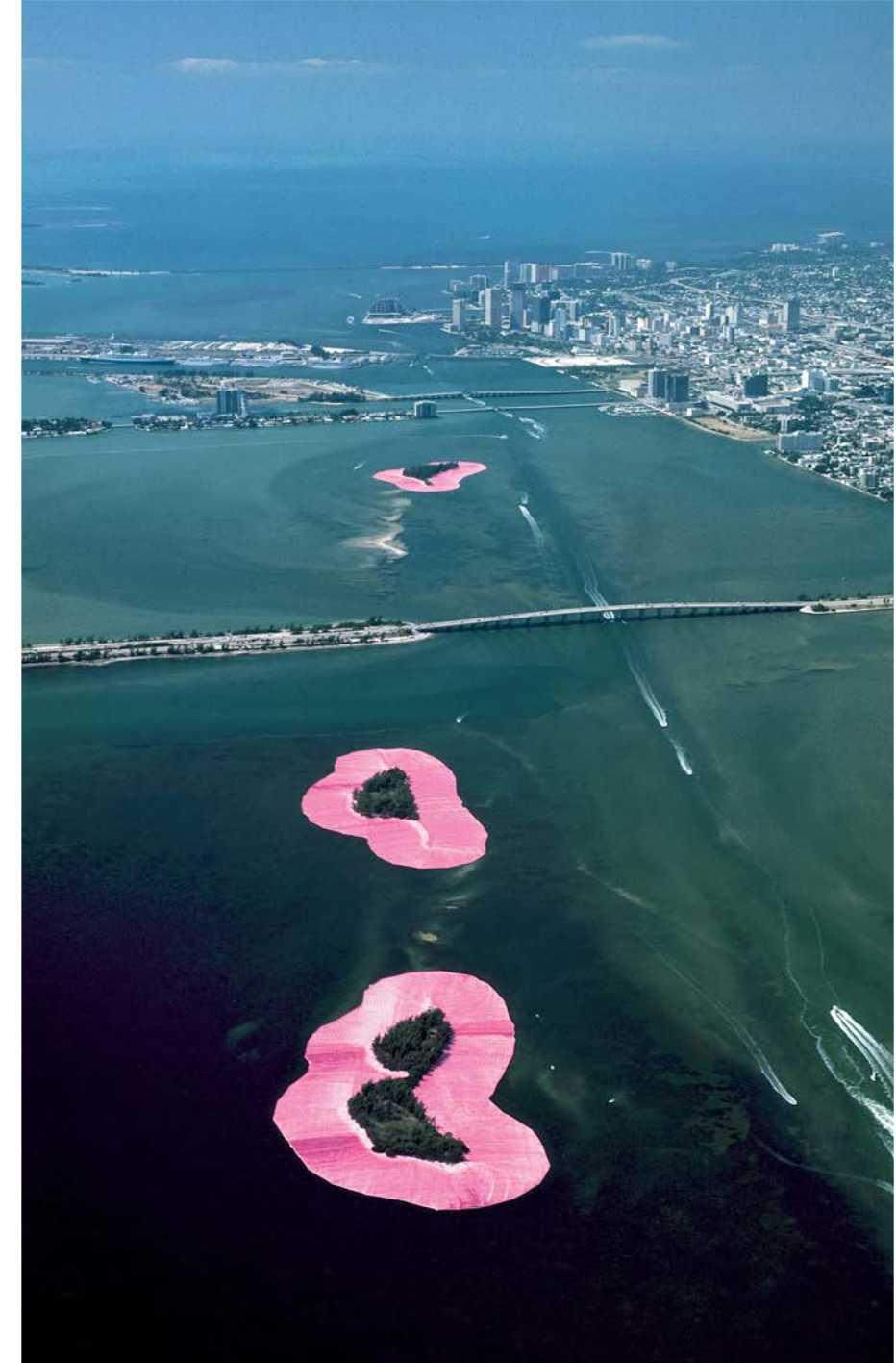
FADED CROSSWALK BRANDING

# EXISTING SITE PLAN





# WALKS AND OASES CONCEPT



Surrounding Islands 1983 By Christo and Jeanne-Claude

# PROPOSED SITE PLAN: WALKS AND OASES







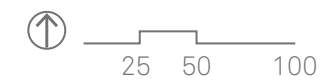
PROPOSED

# EXISTING SITE PLAN

ALTON ROAD TO BISCAIYNE WATERWAY



11 ON-STREET PARKING SPACES



# PROPOSED PLAN

ALTON ROAD TO BISCAIYNE WATERWAY



ROCK SALT FINISH CROSSWALK

OASES PAVING SIDEWALK

ASPHALT

TREE REMOVED

PLANTING AREA

ALL ON-STREET PARKING TO REMAIN



# PROPOSED PLAN

ALTON ROAD TO BISCAIYNE WATERWAY



ROCK SALT FINISH CROSSWALK

OASES PAVING SIDEWALK

ASPHALT

TREE REMOVED

PLANTING AREA

ALL ON-STREET PARKING TO REMAIN



# EXISTING AND PROPOSED ELEVATIONS ALTON ROAD TO BISCAYNE WATERWAY



EXISTING NORTH ELEVATION



EXISTING SOUTH ELEVATION

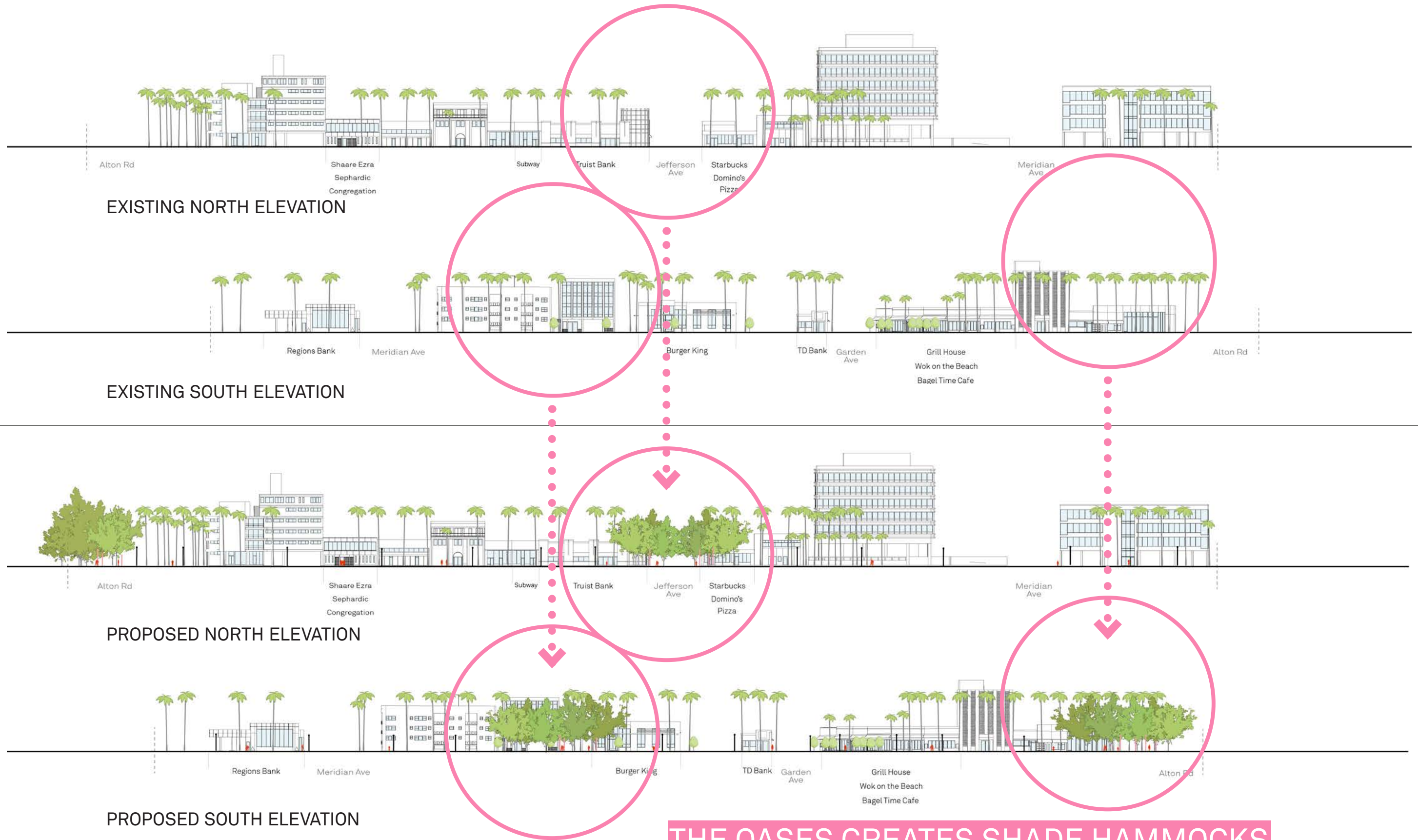


PROPOSED NORTH ELEVATION



PROPOSED SOUTH ELEVATION

# EXISTING AND PROPOSED ELEVATIONS ALTON ROAD TO BISCAYNE WATERWAY



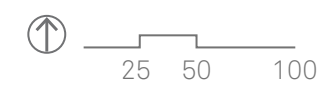
**THE OASES CREATES SHADE HAMMOCKS**

# EXISTING SITE PLAN

BISCAYNE WATERWAY TO PRAIRIE AVE



26 ON-STREET PARKING SPACES

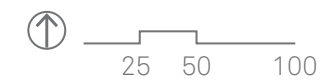


# PROPOSED PLAN

BISCAYNE WATERWAY TO PRAIRIE AVE



-  ROCK SALT FINISH CROSSWALK
-  OASES PAVING SIDEWALK
-  ASPHALT
-  TREE REMOVED
-  PLANTING AREA
-  3 ON-STREET PARKING SPACES REMOVED
-  23 ON-STREET PARKING SPACES TO REMAIN





# PROPOSED PLAN

BISCAYNE WATERWAY TO PRAIRIE AVE



# EXISTING AND PROPOSED ELEVATIONS BISCAYNE WATERWAY TO PRAIRIE AVE



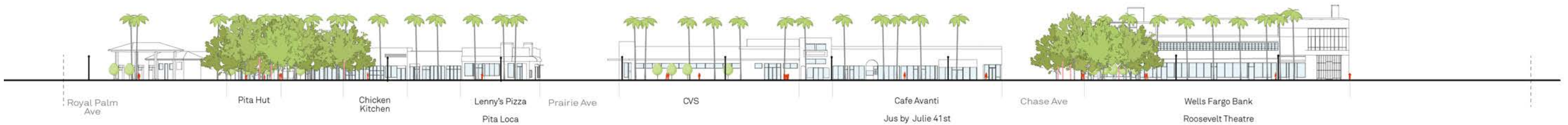
EXISTING NORTH ELEVATION



EXISTING SOUTH ELEVATION



PROPOSED NORTH ELEVATION



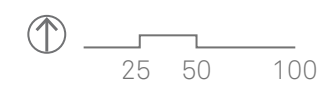
PROPOSED SOUTH ELEVATION

# EXISTING SITE PLAN

SHERIDAN AVE TO PINE TREE DR



26 ON-STREET PARKING SPACES

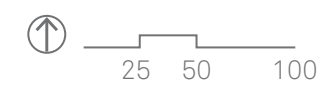


# PROPOSED PLAN

SHERIDAN AVE TO PINE TREE DR



- ROCK SALT FINISH CROSSWALK
- OASES PAVING SIDEWALK
- ASPHALT
- TREE REMOVED
- PLANTING AREA
- ⋯ 7 ON-STREET PARKING SPACES REMOVED
- ▭ 19 ON-STREET PARKING SPACES TO REMAIN



# PROPOSED PLAN

SHERIDAN AVE TO PINE TREE DR



# EXISTING AND PROPOSED ELEVATIONS PRAIRIE AVE TO PINE TREE DRIVE



EXISTING NORTH ELEVATION



EXISTING SOUTH ELEVATION



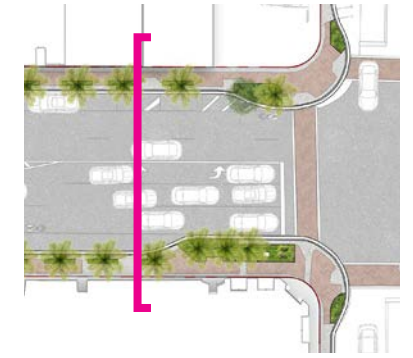
PROPOSED NORTH ELEVATION



PROPOSED SOUTH ELEVATION

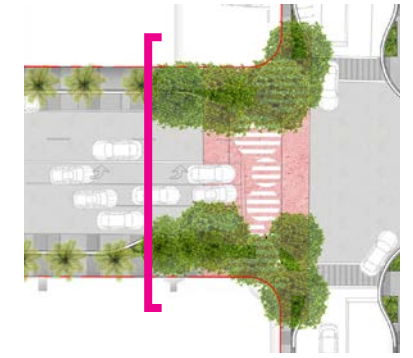
# EXISTING SECTION

TYPICAL "WALKS" SECTION



# PROPOSED SECTION

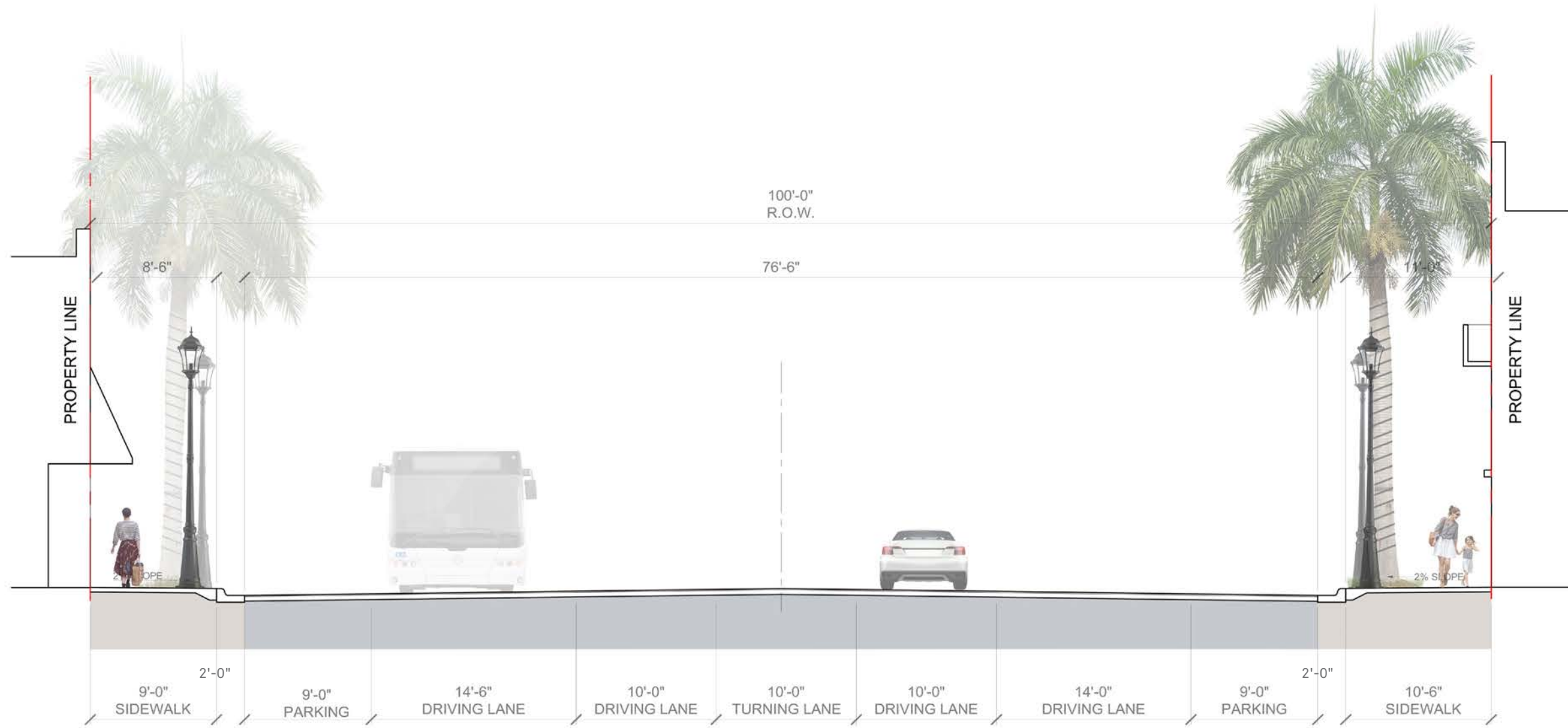
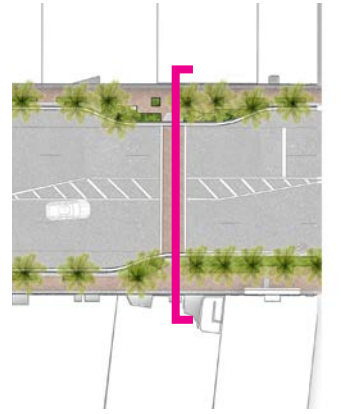
TYPICAL "WALKS" SECTION





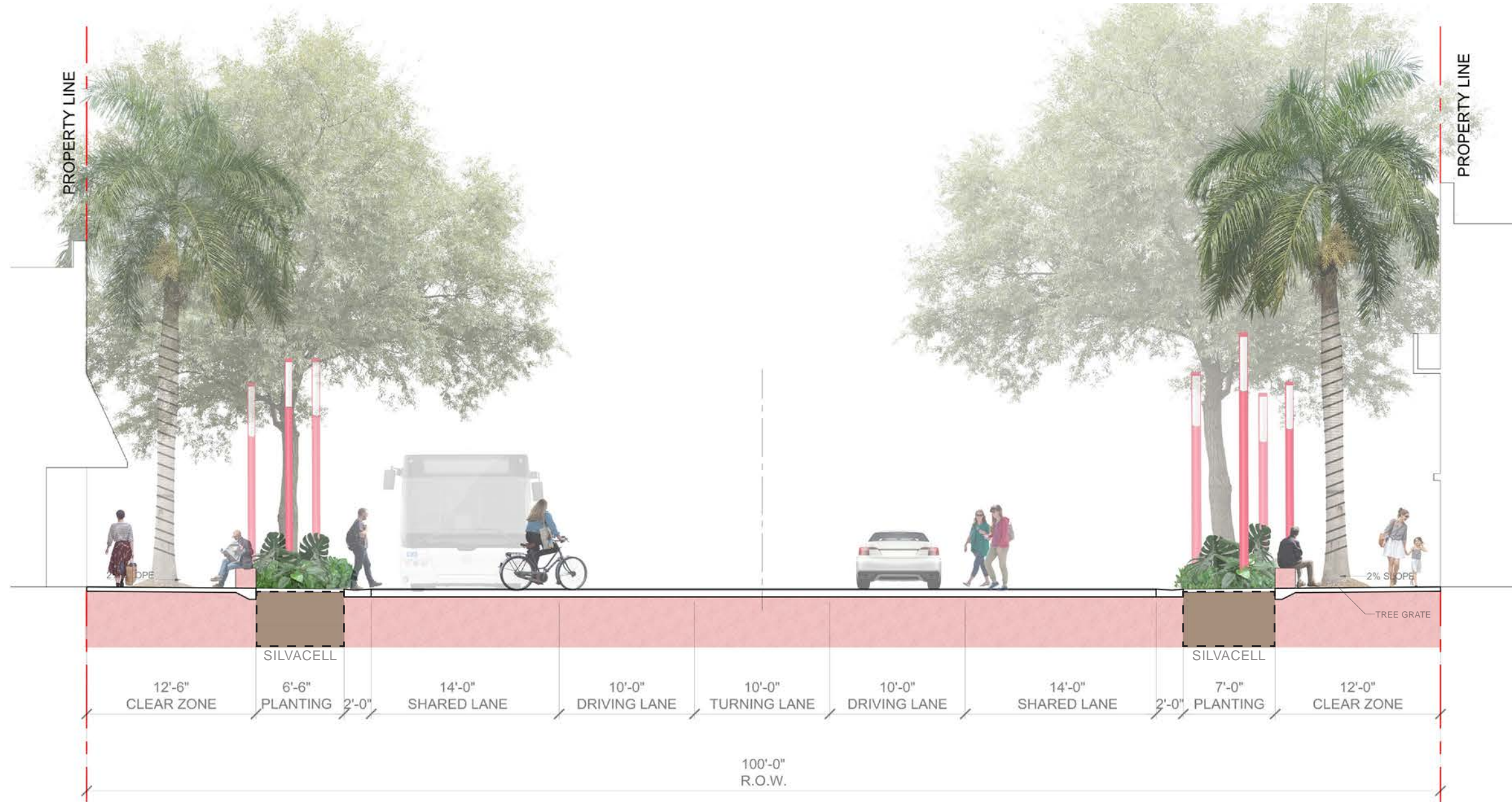
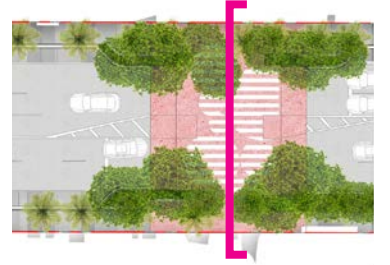
# EXISTING SECTION

TYPICAL "OASIS" SECTION



# PROPOSED SECTION

TYPICAL "OASIS" SECTION





East of intersection between Garden Ave. and 41 St.



ROYAL PALM WITH STRING LIGHTS

LED STREET LAMPS

NATIVE GRASSES

BANDED PATTERN CONCRETE

SEAT WALL





# PROPOSED STRING LIGHTS EVERY TREE | OPTION 1



# PROPOSED STRING LIGHTS EVERY OTHER TREE | OPTION 2





# PROPOSED ADJUSTABLE ACCENT LIGHTS | OPTION 3



# PROPOSED PLANTING PALETTE

EXISTING CANOPY



Royal Palm  
*Roystonea regia*



Strangler Fig  
*Ficus aurea*



Green Buttonwood  
*Conocarpus erectus*

LARGE CANOPY



Live Oak  
*Quercus virginiana*



Green Buttonwood  
*Conocarpus erectus*



Gumbo Limbo  
*Bursera simaruba*



Mahogany Tree  
*Swietenia mahogani*



Wild Tamarind  
*Lysiloma latisiliquum*

MEDIUM CANOPY



Silver Buttonwood  
*Conocarpus erectus*



Pigeon Plum  
*Coccoloba diversifolia*



Autograph Tree  
*Clusia rosea*

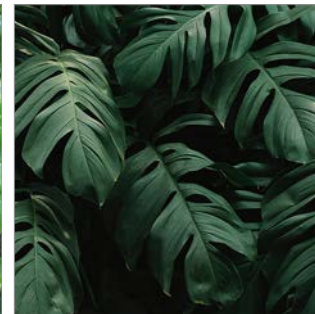
GROUND COVERS



Wart Fern  
*Phymatosorus scolopendria*



Philodendron 'Burle-Marx'  
*Philodendron burle-marxii*



Monstera  
*Monstera deliciosa*



Dwarf palmetto  
*Sabal minor*



Muhly Grass  
*Muhlenbergia capillaris*



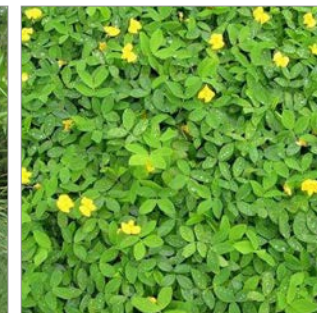
Milkweed  
*Asclepias syriaca*



Spartina Grass  
*Spartina*



Fakahatchee Grass  
*Tripsacum dactyloides*



Perennial Peanut  
*Arachis glabrata*

# PROPOSED ROYAL PALM PALETTE

WITH EXPOSED  
ROOT BALL



EXISTING



PROPOSED

IF THE ROOT OF AN EXISTING ROYAL PALM ARE RAISED AND/OR CAUSING ISSUES, THEN A SEAT WALL WILL ENCLOSE THE TREE. FERNS OR SIMILAR RESILIENT PLANT SPECIES CAN INFILL THESE NEW PLANTERS

WITHOUT EXPOSED  
ROOT BALL



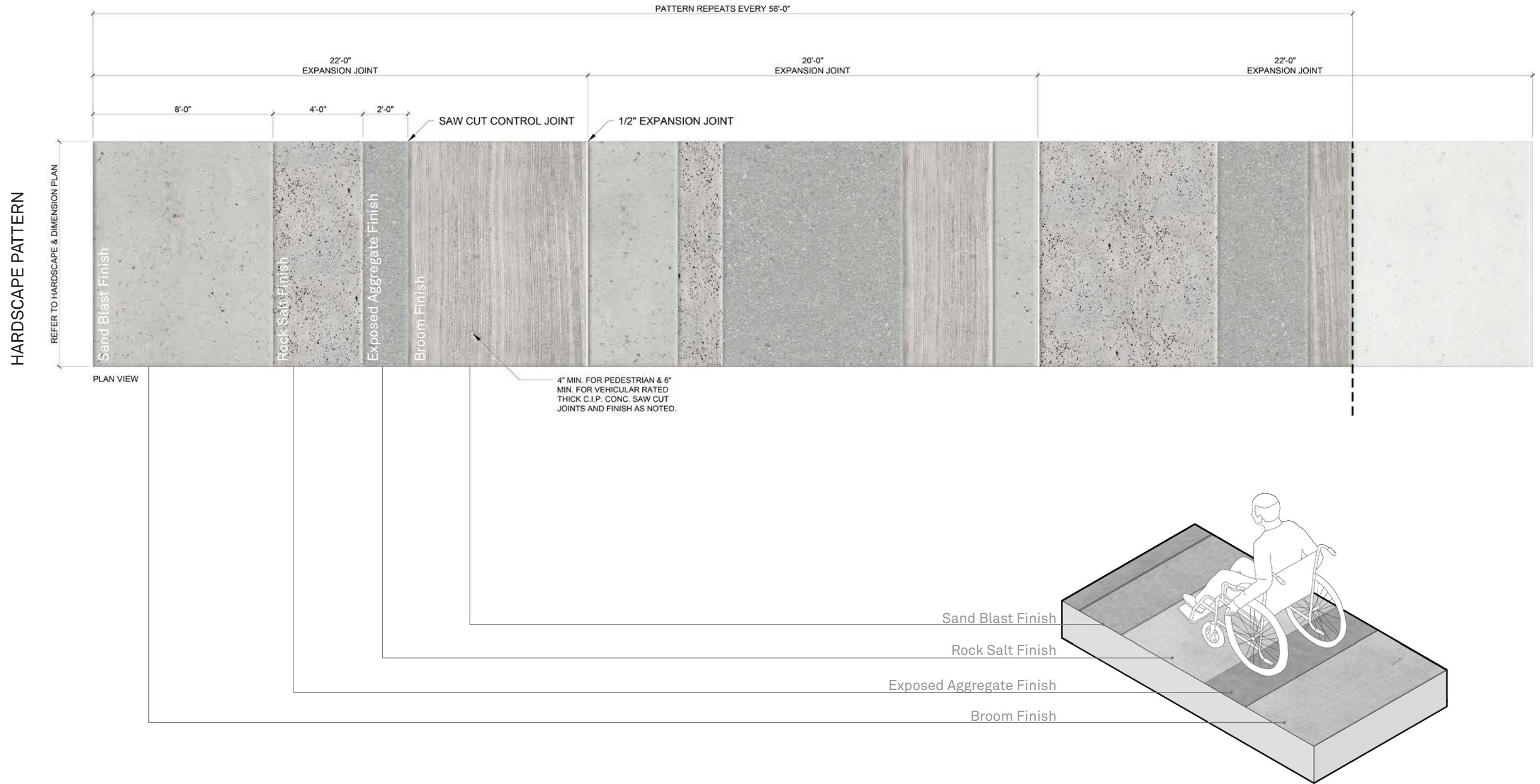
EXISTING



PROPOSED

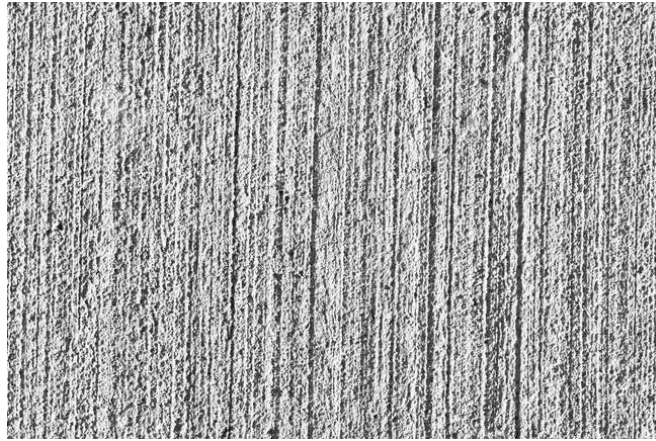
IF THE ROOT OF AN EXISTING ROYAL PALM ARE AT GRADE, THEN METAL GRATING BECOMES THE PRIMARY TOOL TO PROTECT THE TREE AND EXPAND THE WALKS

# PROPOSED PAVING | WALKS

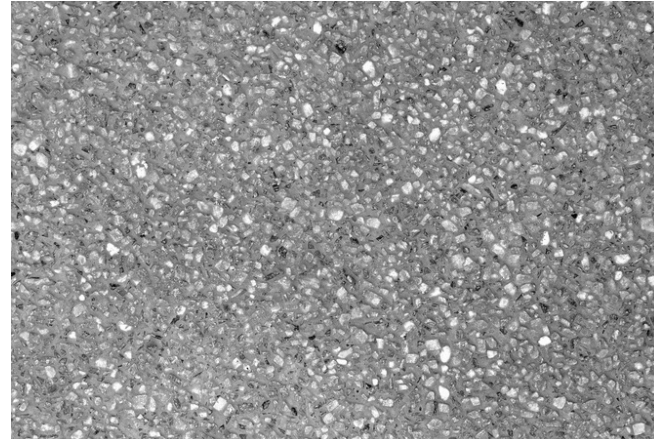


Diverse Textured Concrete Sidewalk

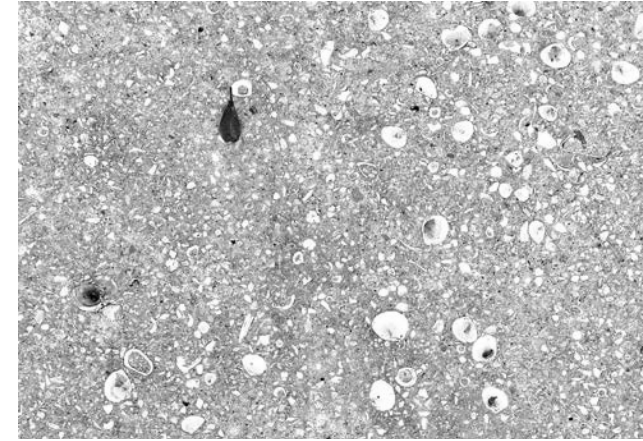
# PROPOSED PAVING | WALKS



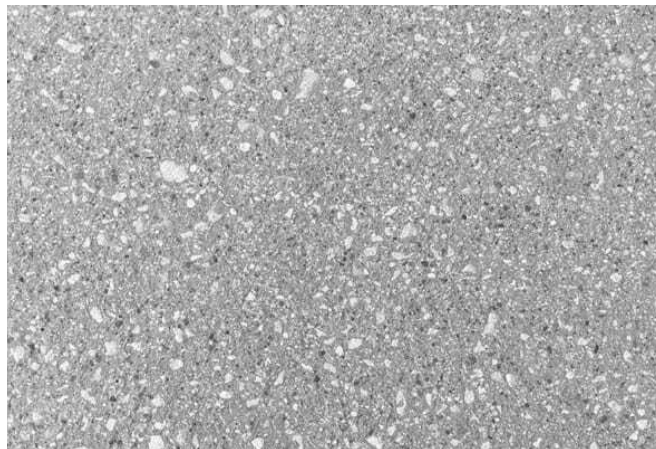
Broom Finish



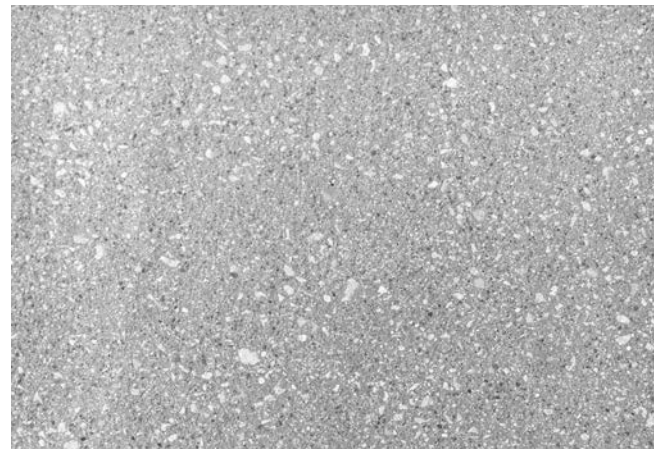
Exposed Aggregate



Seashell Aggregate



Heavy Sandblasted Finish



Light Sandblasted Finish



Towel Finish

# PROPOSED FURNITURE PALETTE | WALKS

EXISTING



Bike Rack



Trash Receptacles



Benches



Street Lamp  
Type D CMB Public Works

REFINISHED STREET FURNITURE



Dark Bronze/Black Gloss Finish



Stainless Steel/  
Aluminum Mill Finish



Landscape Forms  
*Milenio*

PRECAST SEAT WALLS

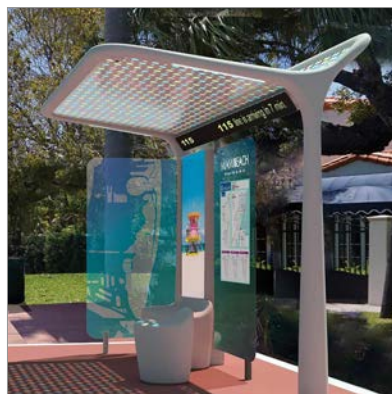


Wausau  
*Seat Walls*



A23Y

NEW



Design by Pininfarina

MIAMI BEACH BUS STOP



Existing



Midblock crossing between Prairie Ave. and Royal Palm Ave.



SHADE TREES

LED STREET LAMP

ROYAL PALM

MID-BLOCK GRAPHIC

SEAT WALL

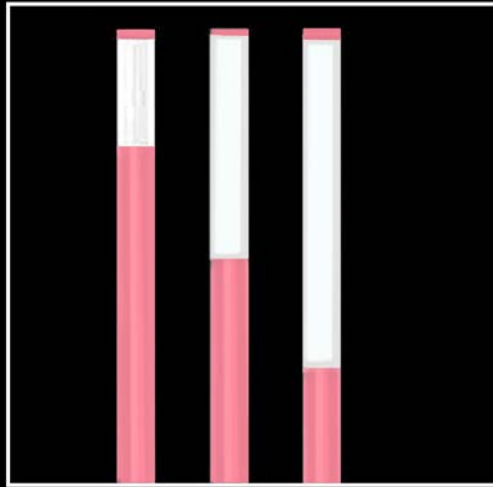
FOLIAGE

TEXTURED CONCRETE  
(ROCK SALT FINISH)





# LIGHTING OPTIONS | OASES



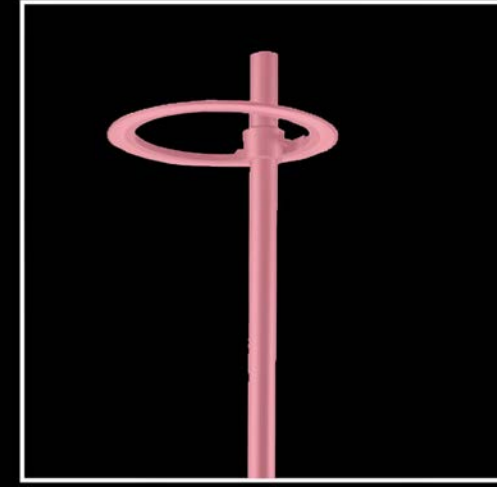
Modern Light Garden  
painted (marine grade)

OPTION 1



Urban Branding  
painted (marine grade)

OPTION 2



Light Garden Loops  
painted (marine grade)

OPTION 3

**LUMINIS** CL620/CL640/CL670 SERIES LUMINISTIK 6" COLUMN

TYPE	QUANTITY	PROJECT
CATALOG NUMBER		
PICTURE	LED LIGHT SECTION	COLUMN VOLTAGE FINISH OPTION OPTION OPTION

**MATERIALS**  
Lumistik Column is made of 6061-T6 extruded aluminum alloy. All other cast parts are corrosion resistant 505 aluminum alloy with a color finish of white or black. LED boards are mounted on white LED enabled high impact acrylic sealed opticon. The assembly is designed to provide a uniform column illumination. Lumistik Column is available in three standard column heights. Other heights are available on request.

**ELECTRICAL**  
Standard driver is 0-10V dimming-ready (dim to 0%) with 5000mV resolution. 5000mV resolution temperature range of -40°C to +105°C. 4000mV to 4000mV. Analog over voltage protection, output over current protection and short circuit protection. IP67 compliant.

**LIFE**  
50,000hrs L<sub>80</sub> (Based on IESNA TM-21 Test Method and L70-B0-60k)

**FINISH**  
Powder coat preparation process includes priming of cast aluminum parts for an additional powder coating. Applied through an electrocoat process, and oven cured for long term finish.

**CERTIFICATION**  
UL listed, ENEC approved in per CSA C22.2 No. 250.1 standard and IEC60598-2-21 standard for use location. RoHS Compliant. Photometric testing performed by an independent laboratory in accordance with IESNA LM-79. Approved at IESNA. Lumisite Registration in accordance with IESNA LM-80 standards.

LUMINIS | Toll Free: 800.596.4647 Fax: 534.655.8872 Email: info@luminis.com  
2023 Address: 19900 Gables Blvd | Tampa, FL 33613  
Luminis may be allowed for design improvement or discontinued without prior notice.

**CITY ELEMENTS** Illuminating Top Module - PRB00

**DESCRIPTION**  
City Elements 90 offers design professionals the flexibility of a multi-purpose lighting system in a single architectural structure. It may be configured with a single top element for area lighting and may include up to two additional lighting modules directly below for accenting or highlighting of facades, landscaping, or features. Columns may be specified with heights up to twenty feet. A companion bollard is also available. Housing shells for the top element may be with 30° lens with a choice of symmetric or asymmetric reflectors or an asymmetric housing for linear site lighting. Lumisite housing and extruded aluminum shaft with flush hardware are finished in finely textured paint. All hardware is stainless steel.

**ORDERING INFORMATION**

PRODUCT	MODEL	CC1	DISTRIBUTION	VOLT	FINISH (Paint*)
CFR4848B/TVC	90	90	T2	120V	SL
	90	90	T4	120V	SL
	90	90	T6	120V	SL
	90	90	T8	120V	SL
	90	90	T10	120V	SL
	90	90	T12	120V	SL
	90	90	T14	120V	SL
	90	90	T16	120V	SL
	90	90	T18	120V	SL
	90	90	T20	120V	SL
	90	90	T22	120V	SL
	90	90	T24	120V	SL
	90	90	T26	120V	SL
	90	90	T28	120V	SL
	90	90	T30	120V	SL
	90	90	T32	120V	SL
	90	90	T34	120V	SL
	90	90	T36	120V	SL
	90	90	T38	120V	SL
	90	90	T40	120V	SL
	90	90	T42	120V	SL
	90	90	T44	120V	SL
	90	90	T46	120V	SL
	90	90	T48	120V	SL
	90	90	T50	120V	SL
	90	90	T52	120V	SL
	90	90	T54	120V	SL
	90	90	T56	120V	SL
	90	90	T58	120V	SL
	90	90	T60	120V	SL
	90	90	T62	120V	SL
	90	90	T64	120V	SL
	90	90	T66	120V	SL
	90	90	T68	120V	SL
	90	90	T70	120V	SL
	90	90	T72	120V	SL
	90	90	T74	120V	SL
	90	90	T76	120V	SL
	90	90	T78	120V	SL
	90	90	T80	120V	SL
	90	90	T82	120V	SL
	90	90	T84	120V	SL
	90	90	T86	120V	SL
	90	90	T88	120V	SL
	90	90	T90	120V	SL
	90	90	T92	120V	SL
	90	90	T94	120V	SL
	90	90	T96	120V	SL
	90	90	T98	120V	SL
	90	90	T100	120V	SL

www.luminis.com For other experiences? Check out our other products, please visit www.luminis.com/products  
Luminis is a lighting effort to offer the best product possible, we reserve the right to change without notice, specifications or details. Technical specifications listed for reference only. Lumisite registration is required for use in accordance with IESNA LM-79 standards.

**Typology Ring Light** Spec Sheet | C/200

**DESCRIPTION**  
The Typology Collection, designed and engineered in collaboration with BMV Designworks, opens a new realm of possibility in the way the urban landscape is experienced. Intelligent, systemic engineering components creating architecture in meaningful and practical ways - defining and connecting spaces, and intuitively guiding the movement of visitors in and among them. Typology's ring light is a stunning, seamless lighting light fixture recognized instantly from almost any angle. Finished atop an aluminum pole, a circular ring of LED creates a wide ring of ambient light that, when viewed from underneath, is like a looking glass to the sky.

**Housing & Materials**  
Cast aluminum construction. Flexible LED light engine is clamped into fixture housing with aluminum segmented shell. Housing features a spun aluminum glass white powder-coated reflector. All hardware is anodized stainless steel.

**Electrical**  
Range controlled 120V through 277V 60/60Hz electronic driver. 0-10V dimming. 40°C start temperature. Cast aluminum driver housing assembly located at top of pole. Available with optional ANIS-CDS at base lock receptacle or Watstopper PIS-3118 photo/motion sensor.

**Light Engine**  
Fully encapsulated flexible linear LED fixture delivers downward direct and indirect lighting in conjunction with the glass white metal reflector. A RFIEM compliant circuit board is included. Available in 2700K, 3000K, 3500K, and 4000K. 160 CRI across all available color temperatures.

**Distribution**  
TV

**Warranty**  
LED lighting products are warranted for six years.

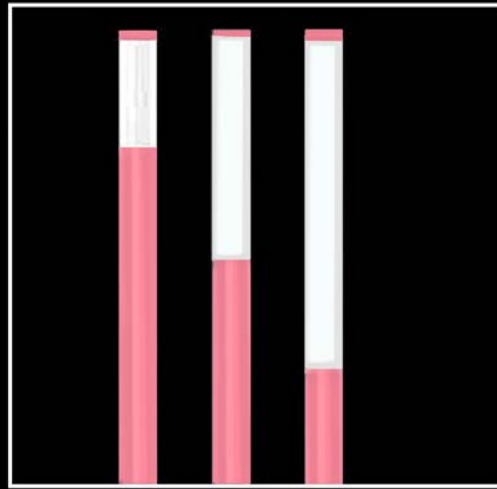
**Certification**  
UL Listed for RFI location, CE, International Dark Sky Approved, Ray America Compliant, RoHS Compliant

**Designed by Designworks, a BMV Group company**

Revised January 11, 2022 | Landscape Forms Inc. | 800.521.2646 | 7263.381.3465 | 1100 E. Michigan Ave., Kalamazoo, MI 49001

# LIGHTING OPTION 1

LIGHT PALETTE



Modern Light Garden  
*painted (marine grade)*

**LUMINIS** CL620/CL640/CL670 SERIES LumiiSTIK 6" COLUMN

TYPE	QUANTITY	PROJECT
DETAIL		
FEATURE	LED LIGHT	COLUMN
	VOLTAGE	FINISH
	OPTION	OPTION
	OPTION	OPTION

**MATERIALS**  
LumiiSTIK is made of 6061-T6 anodized aluminum alloy. All other cast parts are made of 6061-T6 aluminum alloy with a marine grade finish. The luminaire is made of 6061-T6 aluminum alloy with a marine grade finish. The luminaire is made of 6061-T6 aluminum alloy with a marine grade finish. The luminaire is made of 6061-T6 aluminum alloy with a marine grade finish.

**ELECTRICAL DRIVER**  
Standard driver is 5V/100mA dimming ready (DR-100) with 100% dimming range. The luminaire is made of 6061-T6 aluminum alloy with a marine grade finish. The luminaire is made of 6061-T6 aluminum alloy with a marine grade finish. The luminaire is made of 6061-T6 aluminum alloy with a marine grade finish.

**LIFE**  
100,000 hours (based on IESNA TM-21 Test Method and LM-80 data)

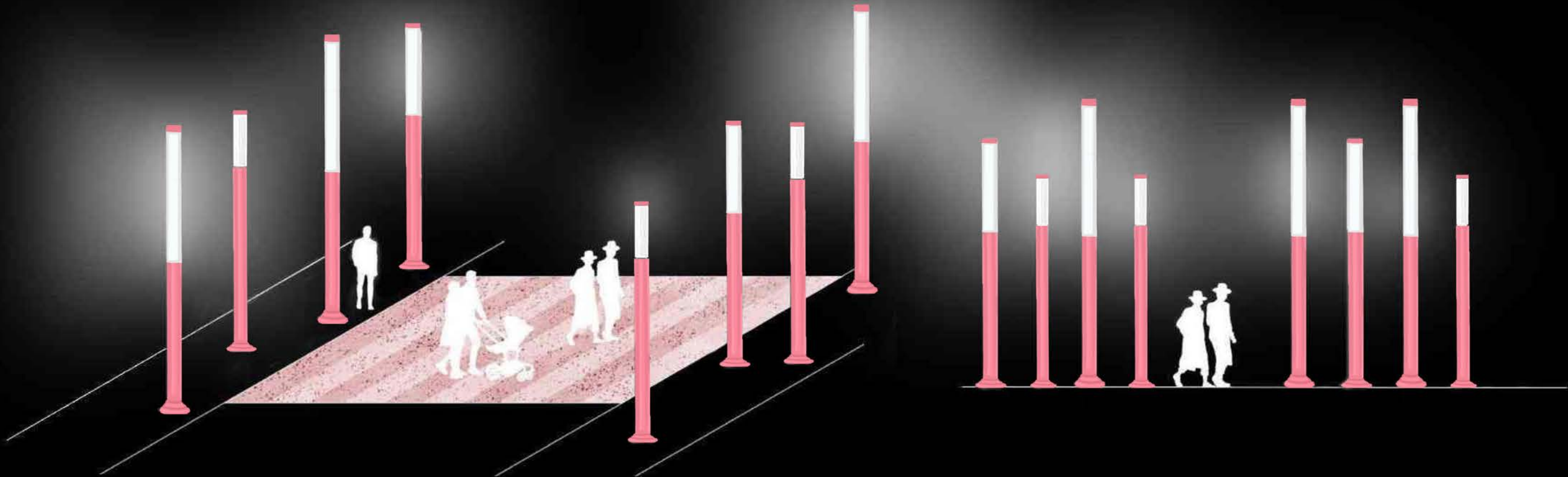
**FINISH**  
Marine grade powder coating (RAL 9005) is applied through an electrocoat process and is cured for 120 minutes.

**CERTIFICATION**  
LumiiSTIK is certified to meet IESNA TM-21 Test Method and LM-80 data. The luminaire is made of 6061-T6 aluminum alloy with a marine grade finish. The luminaire is made of 6061-T6 aluminum alloy with a marine grade finish. The luminaire is made of 6061-T6 aluminum alloy with a marine grade finish.

**LUMINIS** | Toll free: 800.586.6647 | Fax: 514.852.8872 | Email: info@luminis.com  
300 Lakeshore Blvd. East, Toronto, ON M5E 1B5, Canada

LUMINIS  
LumiiSTIK

LIGHT GARDENS





# LIGHTING OPTION 2

LIGHT PALETTE



Urban Branding  
*painted (marine grade)*

**CITY ELEMENTS**  
Illuminating Top Module - PB899 .hess

**DESCRIPTION**  
City Elements 899 offers design professionals the flexibility of a multi-purpose lighting system in a single architectural structure. It may be configured with a single top element for area lighting and may include up to two additional lighting modules directed below for accenting or highlighting of features, landscaping, or artwork. Custom may be specified with heights up to twenty feet. A companion fixture is also available. Housing depth for the top element may be with 20" or with a choice of options. An optional reflective or an engraved housing for house color matching landscape housing and selected aluminum shaft with flush hardware are finished in finely textured paint. All hardware is stainless steel.

**PRIMAR**

Date: \_\_\_\_\_, Size: \_\_\_\_\_, Catalog Number: \_\_\_\_\_  
Project Name: \_\_\_\_\_

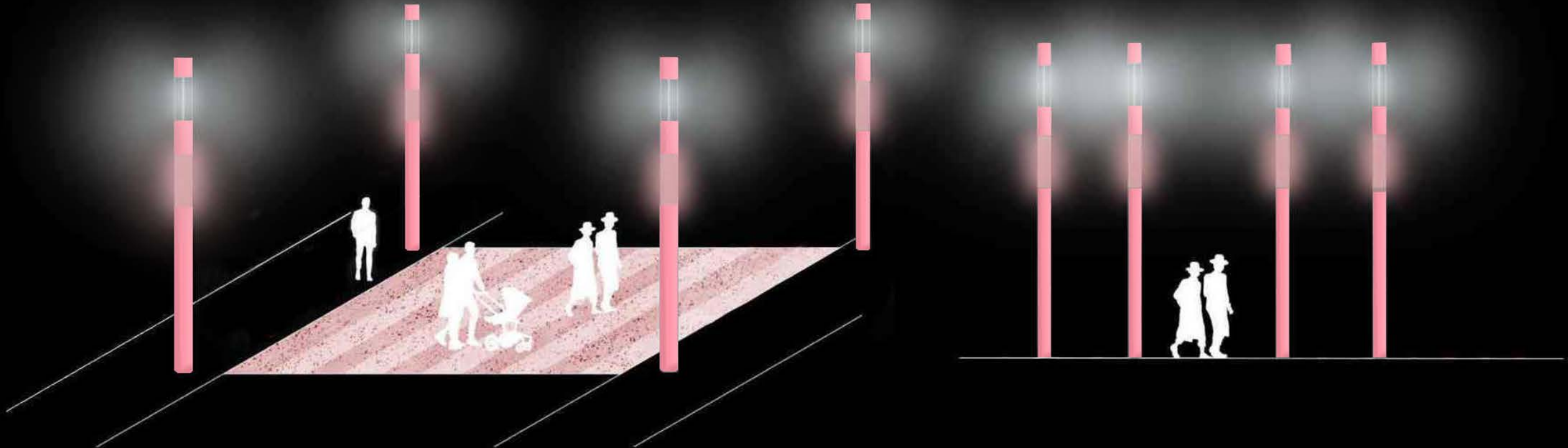
**ORDERING INFORMATION**

MODEL	CCT	DISTRIBUTION	VOLT	FIXTURE (Power)
CE899-001-001	4000K	T3	120V	50W
CE899-001-002	4000K	T3	120V	50W
CE899-001-003	4000K	T3	120V	50W
CE899-001-004	4000K	T3	120V	50W
CE899-001-005	4000K	T3	120V	50W

**EXPERIENCE** [www.experience.com](http://www.experience.com) For other Experience® brands companies, please visit [www.experiencebrands.com](http://www.experiencebrands.com)  
A technology driven brand in the world of smart products, we are here to help you create, invent, and grow. [www.experience.com](http://www.experience.com) or 800-648-3524

.hess  
City Elements

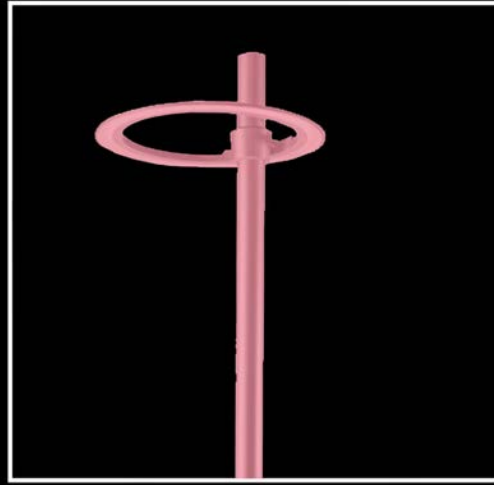
LIGHT GARDENS





# LIGHTING OPTION 3


LIGHT PALETTE



Light Garden Loops  
*painted (marine grade)*

**Typology Ring Light** landscapeforms

Spec Sheet | 10/21/20



The Typology Collection, designed and engineered in collaboration with BMW Designworks, offers a new vision of possibility in the way that urban landscapes are experienced. Intelligent, systems engineering components enable architecture to merge with practical space, defining and intersecting space, and intuitively guiding the movement of visitors in and around them. Typology in the light is soaring, seamlessly blending light fixtures recognized instantly from almost a mile away. Punched steel or aluminum mesh, a vertical strip of LED, or a ring of ambient light that, when viewed from underneath, is like a looking glass to the sky.

**Housing & Materials**  
Cast aluminum distribution. Flexible LED light engine is clamped into fixture housing with aluminum segmented pins. Housing features a glass aluminum glass white polycarbonate reflector. All hardware is anodized aluminum.

**Electrical**  
Single powered LED through 277V (3000K) electronic driver. 0-10V dimming. -40°C start temperature. Cast aluminum driver housing assembly mounted at top of pole. Available with optional 800V 200A air break lock receptacle or Watstopper PDP-2118 photostation sensor.

**Light Engine**  
Full integrated flexible linear LED fixture delivers downward direct and indirect lighting in conjunction with the glass white metal reflector. A North-south compass mount is included. Available in 3000K, 3500K, 4000K, and 4500K. 180 CRI across all available color temperatures.

**Distribution**  
TV

**Warranty**  
LED lighting products are warranted for six years.

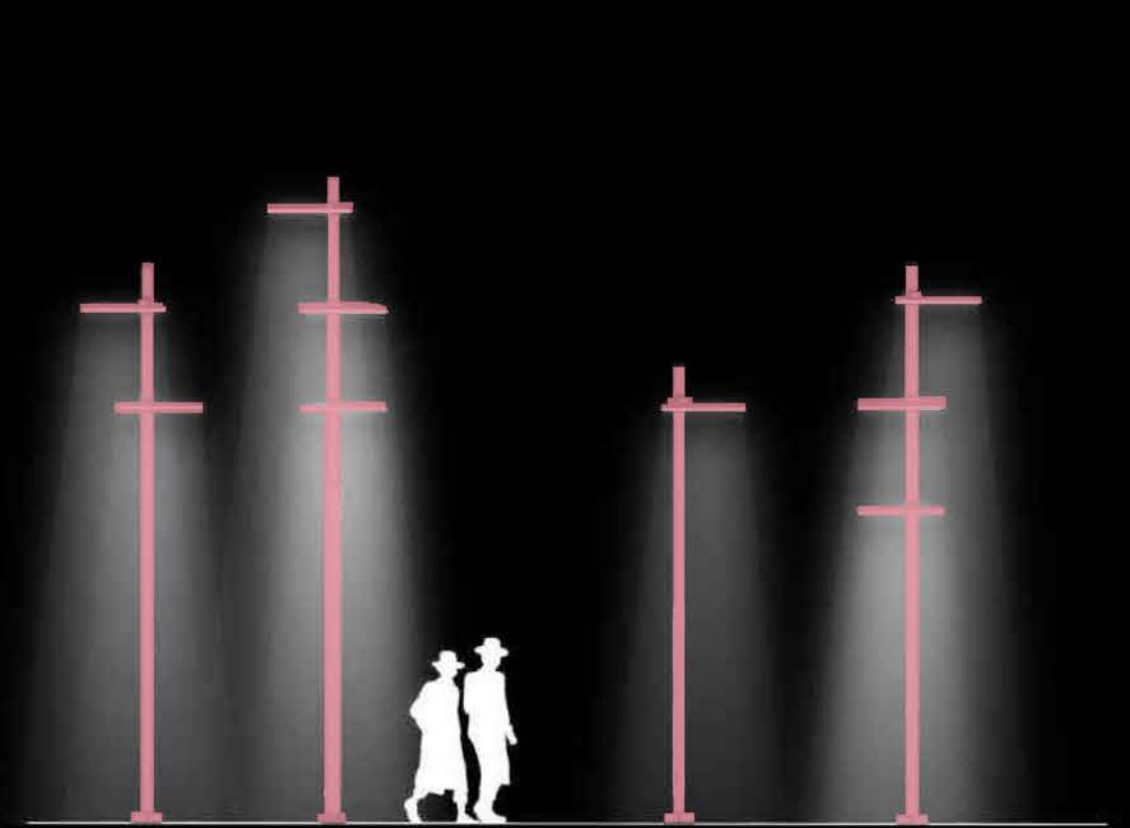
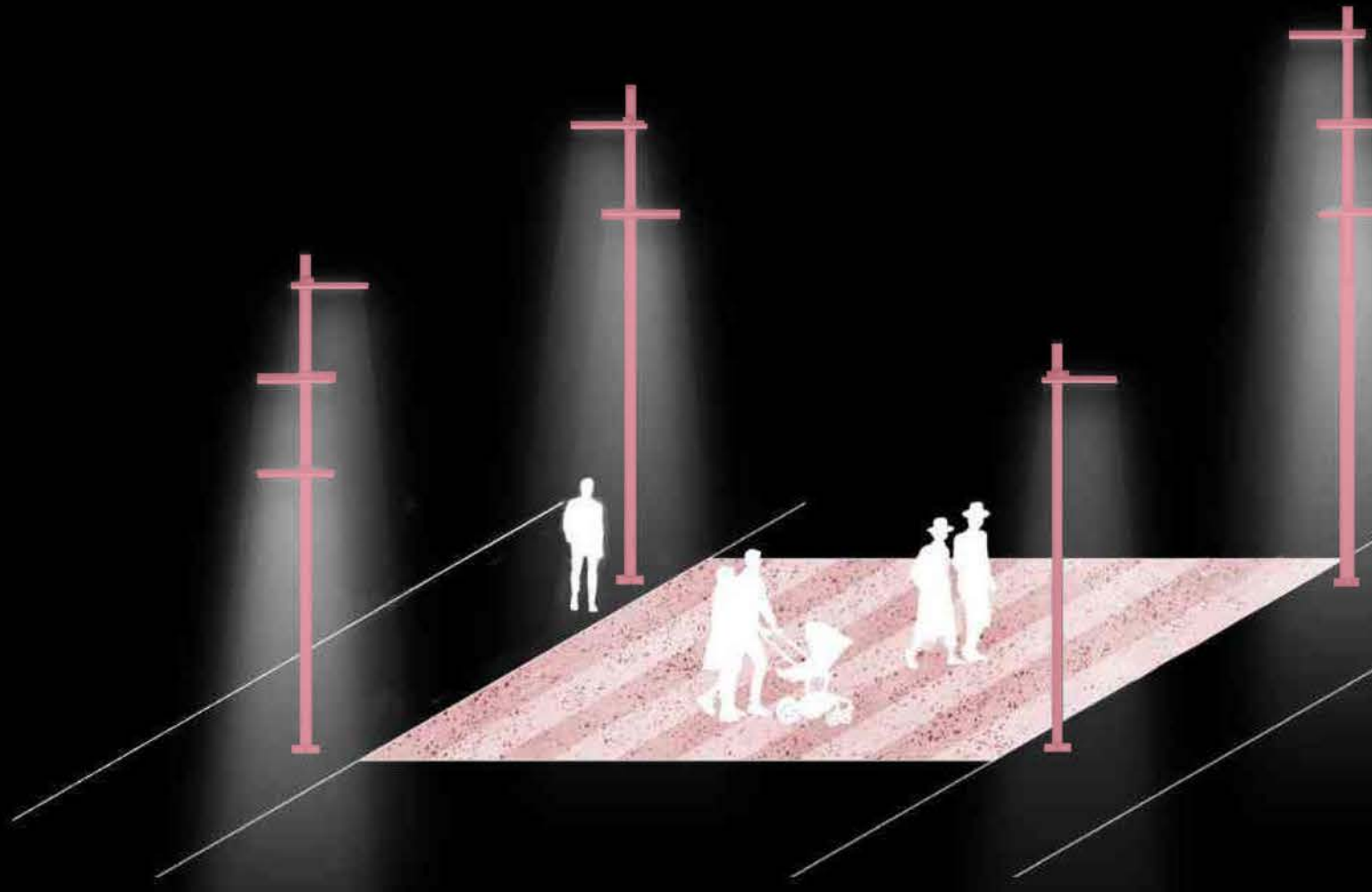
**Certification**  
UL Listed for Wet Location, CE, International Dark Sky Approved, RoHS American Compliance, REACH Compliant.

Designed by Designworks, a BMW Group company  
[Click here for product information related to this product.](#)

Revised January 17, 2022 | Landscape Forms Inc. | 800.527.2540 | P.230.387.5410 | 7625 E. Michigan Ave., Kalamazoo, MI 49008

## Landscapeforms Typology Ring Light

LIGHT GARDENS









MICRO NITE STAR LED		IP66 RATED	
DATE:	PROJECT:	FILE:	
CATALOG NUMBER LOGIC			
<p><b>CATALOG NUMBER LOGIC</b>                      Example: B-MN-LED-e88-SP-WHP-12-1-A-360LS</p> <p><b>MATERIAL</b>                      B: Brass                      M: Aluminum                      S: Steel</p> <p><b>SERIES</b>                      MN - Micro Nite Star</p> <p><b>SOURCE</b>                      LED - with Integral Driving Driver (25W min. load when dimmed)*</p> <p><b>LED TYPE</b>                      e88 - 7W LED/1700K e84 - 7W/2500K 80 CRI                      e88 - 7W LED/3000K e85 - 7W/3000K 90 CRI                      e88 - 7W LED/4000K e84 - 7W/3500K 80 CRI                      e85 - 7W LED/Amber</p> <p><b>SPICER</b>                      SP - Spot (17°) MFL - Medium Flood (27°) FL - Flood (30°)</p> <p><b>FINISH</b> (See page 2 for full-color availability)                      Standard Finish (SDF, SCL, SLP, SLM, WHP, WAK, SLP, VSL)                      Premium Finish (APF, AMK, AQW, BCM, SGE, BPP, CAP, CML, CMA, HUL, NRP, DCP, PMA, SGL, SML, TSL, WCP, VSL)                      Also available in RAL Finishes</p> <p>Brass Finishes (MAC, PGL, MT)</p> <p><b>LENS TYPE</b>                      L2 - Soft Focus L3 - Rectilinear</p> <p><b>SHIELDING</b>                      S - Homogenous Bulbs</p> <p><b>CAP STYLE</b>                      A - 45°                      B - 50°                      C - Flush Lens                      D - 45° Lens Wedgehole (Interior use only)                      E - 50° Lens Wedgehole (Interior use only)</p> <p><b>OPTIONS</b>                      SMO - Flexible Mounting System**</p> <p><b>MOD OPTIONS</b>                      S - 5 Ft Leads                      L - 10 Ft Leads</p>			
<p>*Designed for use with LED transformer. Requires integral low-voltage driver.                      **The SMO cost is already included in the price of LPM, LPM Anal, and Power Canopy.</p>			
<p><b>E-K LIGHTING</b> MADE IN THE USA 333.438.3360   INFO@EKLIGHTING.COM   EKLIGHTING.COM</p>			

TREE CANOPY UPLIGHTING

**KURV-SW** Q-CAP Flexible Fixtures

KURV-SW is a fully encapsulated flexible linear LED fixture suitable for use in direct viewing applications because diodes are not visible due to its unique shape. KURV has a built-in parabolic curve, which allows the fixture to push out asymmetrical light with its internal reflector. Because of its dry and wet rating, it is perfect for not only indoor use but also as outdoor accent lighting, especially when the light needs to be wrapped around a mass. KURV-SW encapsulates our one step, one bin 24-watt spot with LED chips in polycarbonate. It is offered in three different outputs: standard output (1.0W/ft), high output (3.0W/ft), and very high output (5.0W/ft). Available in a clear finish, where diodes are visible, or a translucent finish, where light is diffused.

Output	Standard Output 1.0 W/ft						High Output 3.0 W/ft						Very High Output 5.0 W/ft					
	LM	CM	LF	LF	LF	LF	LM	CM	LF	LF	LF	LF	LM	CM	LF	LF	LF	
3000K	115	34	103	36	107	33	100	30	93	29	87	27	81	25	75	24	72	
4000K	115	34	103	36	107	33	100	30	93	29	87	27	81	25	75	24	72	
5000K	115	34	103	36	107	33	100	30	93	29	87	27	81	25	75	24	72	
6000K	115	34	103	36	107	33	100	30	93	29	87	27	81	25	75	24	72	

**Part Number Builder**

Material	Output	Color	Beam	Type	Connector	Connective	End Cap	Length
KURV-SW	SW	WT	ENCL	ST	SW	NA	CL	10 FT

**Flexibility**

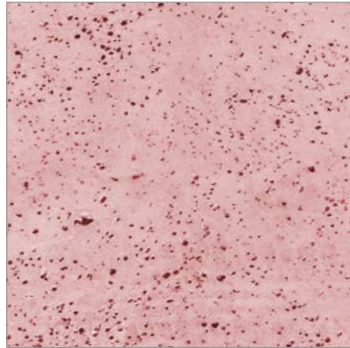
- 5 year warranty
- Field modifications are not covered under Q-Train warranty
- Side Bend
- IK10 impact rated
- Data subject to change, all data has +/- 5% tolerance
- Field modifications are not covered under Q-Train warranty
- PPS-PF is to be cut at Q-Train to requested length
- Ambient or mounting surface must not be lower than 4'5" or higher than 5'0" HO - 115°F; HD - 115°F; WD - 108°F

SEAT WALL LIGHTING



# PROPOSED PAVING | OASES

HARD SCAPE



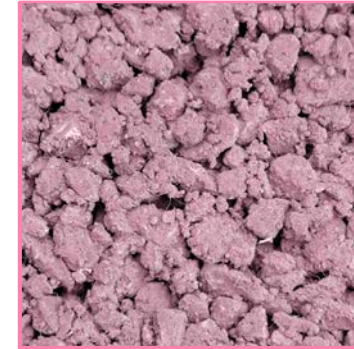
Miami Beach Red Concrete (Rock Salt Finish)



Metal Grates



SUSTAINABLE OPTIONS



Porous Concrete



Cool Pavements

# PROPOSED PAVING OPTIONS | OASES



Raspberry RG2846R



Egyptian Red RG2835R



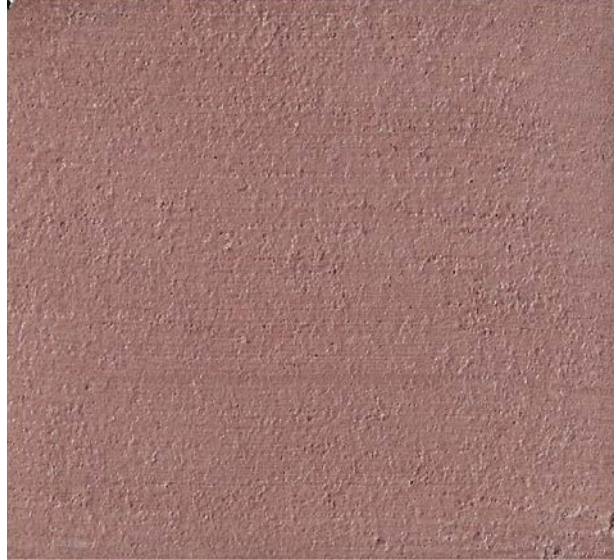
Granite Red 1395



Tile Red 1117



Resin Bonded 1-3mm Red Granite



Miami Beach Red C-1530



Musky Mulberry C-3450

# PROPOSED FURNITURE PALETTE | OASES

SEATING



Landscape Forms  
*Milenio*



Wausau  
Seat Walls



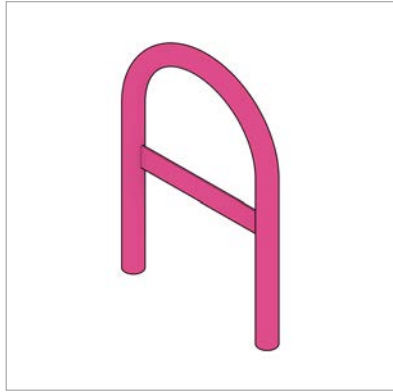
Escofet  
*Fortunat*

PIGMENTED SEAT WALL TO MATCH OASIS COLOR

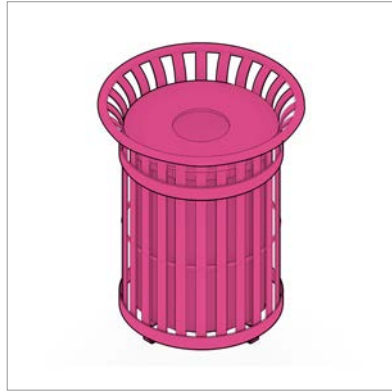


A24Y

FURNITURE



Bike Rack  
*painted (marine grade)*



Trash Receptacles  
*painted (marine grade)*



Benches  
*painted (marine grade)*

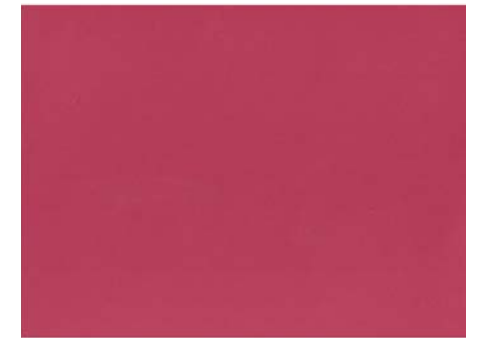
PAINT FURNITURE TO MATCH OASIS COLOR



Eros Pink



Hot



Gala Pink



Dragon Fruit



Forwards Fuchsia

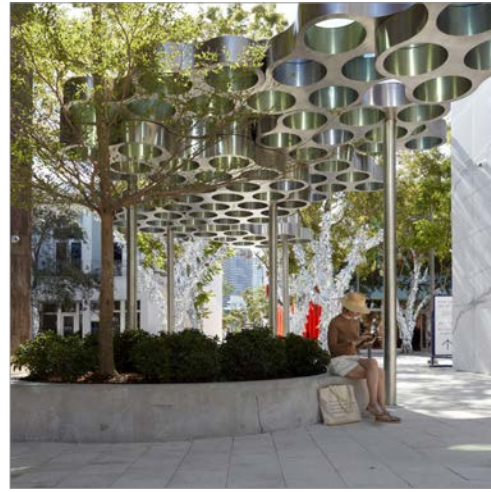
# PROPOSED PUBLIC ART AND GATEWAY FEATURES

## ARCHITECTURAL CANOPY

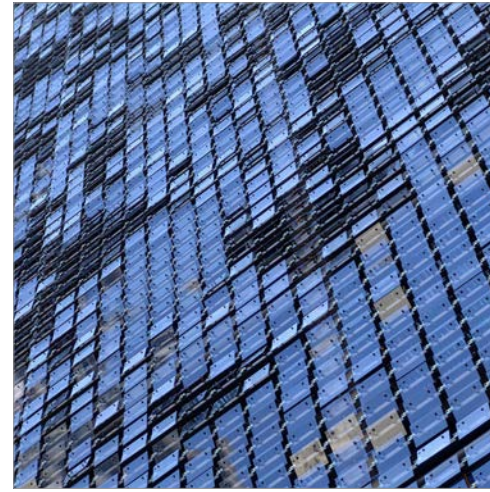
PRECEDENTS



Miami Beach Soundscape  
West 8



Miami Design District  
Bouroullec Brothers



Firefly - moving wall  
Ned Kahn



Gateway Pavilion  
Pembroke Pines, FL



CAM Museum of Art  
Raleigh, NC



Proposed Gateway Art Feature  
*bent pipe, metal mesh, marine grade paint*

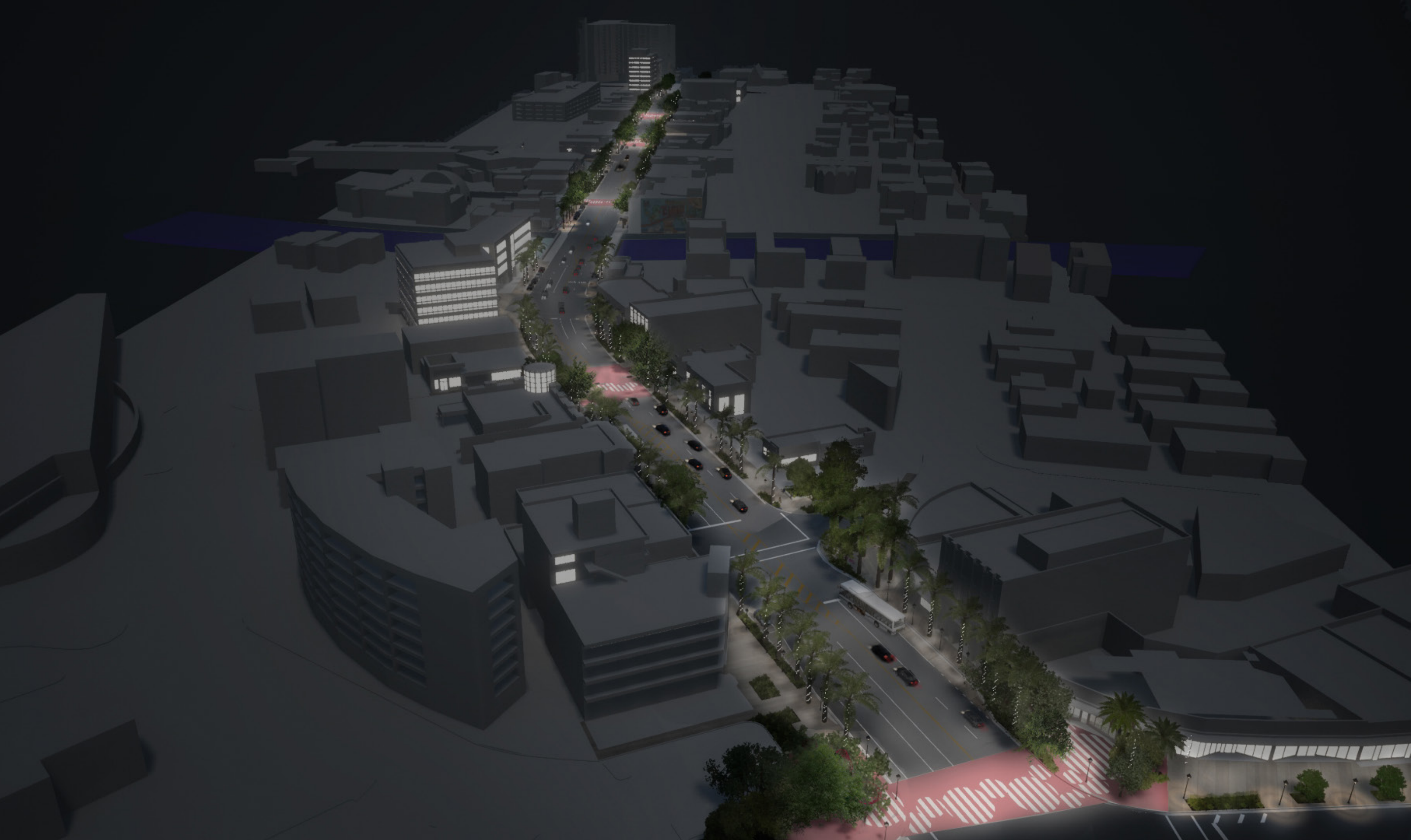


Western Gateway at Alton Road



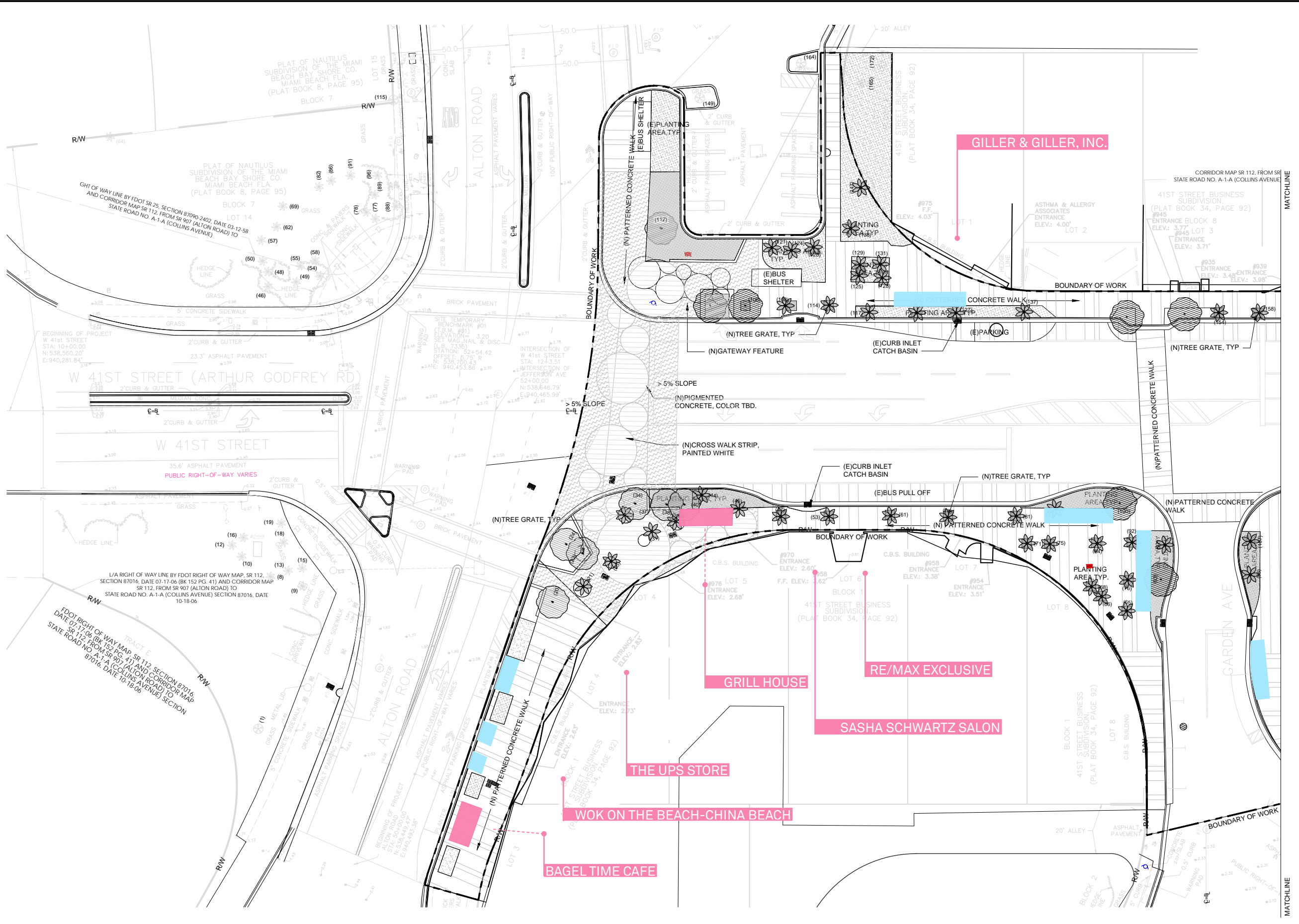
Eastern Gateway at Henry Liebman Square











NOTES:

EXISTING SEATING

POTENTIAL SEATING



ARCH. SEAL:

**MIAMI BEACH**  
OFFICE OF CAPITAL IMPROVEMENT PROJECTS  
1701 MERIDIAN AVENUE, MIAMI BEACH, FL 33139

CITY MANAGER: ALINA T. HUDAK  
DIRECTOR: DAVID MARTINEZ, P.E.  
CITY ENGINEER: CRISTINA ORTEGA CASTINEIRAS, P.E.

NO.	DATE	REVISION	APP'D. BY
5			
4			
3			
2			
1			

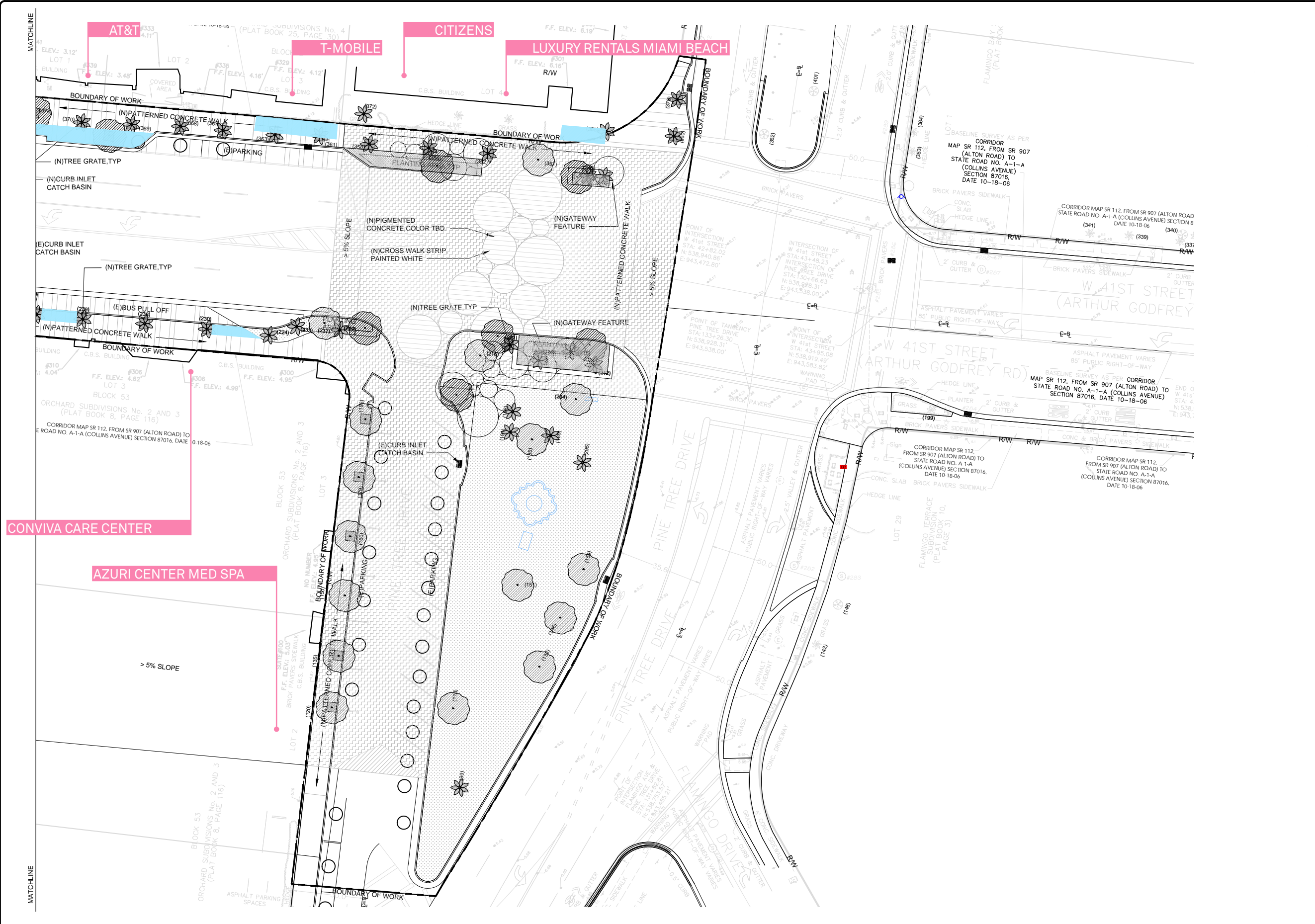
**BROOKS + SCARPA**  
1147 NE 7th Ave  
Fort Lauderdale, FL 33304

ARCHITECT OF RECORD:  
Jeffrey Huber  
#AR95514  
#LA6667547

ARCHITECT OF RECORD:  
DESIGN ARCHITECTXXX  
DRAWN BY: XXX  
CHECKER: XXX  
SCALE: 1"=20'

NEIGHBORHOOD: 41ST ST CORRIDOR REVITALIZATION  
TITLE: **OUTDOOR SEATING DIAGRAM**

File Name: 41STCORR - LX - SEATING.dwg  
Survey Reference:  
Field Book: N/A Page: N/A Work Order: N/A  
Date: 4/17/2023 Sheet: #### of 124 Drawing: #####



NOTES:

EXISTING SEATING

POTENTIAL SEATING



ARCH. SEAL:

**MIAMI BEACH**

OFFICE OF CAPITAL IMPROVEMENT PROJECTS

1701 MERIDIAN AVENUE, MIAMI BEACH, FL 33139

CITY MANAGER: ALINA T. HUDAK

DIRECTOR: DAVID MARTINEZ, P.E.

CITY ENGINEER: CRISTINA ORTEGA CASTINEIRAS, P.E.

5			
4			
3			
2			
1			
NO.	DATE	REVISION	APP'D. BY

**BROOKS + SCARPA**

1147 NE 7th Ave  
Fort Lauderdale, FL 33304

ARCHITECT OF RECORD: Jeffrey Huber  
#AR95514  
#LA6667547

ARCHITECT OF RECORD: DESIGN ARCHITECTXXX  
DRAWN BY: XXX  
CHECKER: XXX  
SCALE: 1"=20'

NEIGHBORHOOD: 41ST ST CORRIDOR REVITALIZATION

TITLE: **OUTDOOR SEATING DIAGRAM**

File Name: 41STCORR - LX - SEATING.dwg

Survey Reference:

Field Book: N/A Page: N/A Work Order: N/A

Date: 4/17/2023 Sheet: #### of 124 Drawing: #####

