

**AMENDMENT NO.13
TO THE PROFESSIONAL
ARCHITECTURAL AND
ENGINEERING (A/E) SERVICES AGREEMENT
BETWEEN THE CITY OF MIAMI BEACH,
FLORIDA AND
WOLFBERG ALVAREZ AND PARTNERS,
INC.DATED OCTOBER 26, 2022**

**FOR THE PROVISION OF ADDITIONAL PROFESSIONAL
ARCHITECTURAL AND ENGINEERING SERVICES FOR THE FLAMINGO
PARK PROJECT IN A NET CREDIT TO THE CITY IN THE AMOUNT OF
\$158,305**

This Amendment No. 13 to the Agreement made and entered this ____ day of _____, 2023, by and between the CITY OF MIAMI BEACH, FLORIDA, a municipal corporation existing under the laws of the State of Florida (hereinafter referred to as the "City"), having its principal offices at 1700 Convention Center Drive, Miami Beach, Florida 33139, and WOLFBERG ALVAREZ AND PARTNERS, INC., a Florida corporation, having its offices at 75 Valencia Avenue, Suite 1050, Coral Gables, FL 33134 (hereinafter referred to as "Consultant").

RECITALS

WHEREAS, pursuant to Request for Qualifications (RFQ) No. 15-06/07, the Mayor and City Commission adopted Resolution No. 2007-26609 on September 05, 2007, approving and authorizing the Mayor and City Clerk to execute an Agreement with Wolfberg Alvarez and Partners, Inc. (WA), for Professional Architecture and Engineering Services for the Flamingo Park Project (the Agreement); and

WHEREAS, the scope of the Agreement included architectural, engineering, master planning, landscape architecture and surveying services, for the development of the Master Plan, as well as the design, bidding, award services, and construction administration of the Tennis Center; and

WHEREAS, the Agreement was executed for a not-to-exceed amount of \$443,000; and

WHEREAS, on July 14, 2010, the City Commission adopted Resolution No. 2010-27427, approving and authorizing the Mayor and City Clerk to execute Amendment No. 1 for a total amount of \$77,720, for additional architectural and engineering services associated with revisions to the Master Plan and Tennis Center and amendments No.'s 2 through 4 were administratively approved by the City Manager, for a total amount of \$6,446, for additional architectural and engineering services associated with changes to the scope and the design of the Tennis Center; and

WHEREAS, on January 15, 2014, the City Commission adopted Resolution No. 2014-28449, approving and authorizing the Mayor and City Clerk to execute Amendment No. 5 for a total amount of \$403,261 and this Amendment provided for the planning, design,

bidding, and construction phase services of the following park improvements, which consist of a community garden, baseball field renovation, historic lodge renovation, new park entrance, enhanced pedestrian/bike paths, new interactive water feature, teenage activity, lighting enhancement, signage, drainage, landscaping and irrigation; and

WHEREAS, on April 23, 2015, Amendment No. 6 was approved administratively by the City Manager for a total amount of \$14,732 and this amendment provided for scope modifications to the Master Plan concept that included an outdoor fitness cluster, the replacement of the community garden with a butterfly garden, the relocation of the new restroom facility and upgrades to the baseball, softball and soccer fields, inclusive of sod, drainage and irrigation; and

WHEREAS, on July 14, 2015, Amendment No. 7 was approved by the City Manager for a total amount of \$15,090, for additional design services associated with the renovation of the existing soccer field, including replacing existing sod with synthetic turf and site drainage in and around the field; and

WHEREAS, on December 14, 2016, the City Commission adopted Resolution No. 2016-29672, approving Amendment No. 8 in the amount of \$231,269, for the provision of additional architectural and engineering services that include updated phases for construction completion, revised construction cost estimates; the design, bidding and construction administration of the renovation of the Robert Hass and Joe Rubin Handball Court Buildings, the eight (8) existing outdoor courts and additional scope identified for the softball field with new lighting, new benches, dug out, and a synthetic turf playing field with associated site drainage; and

WHEREAS, on September 12, 2018, the City Commission adopted Resolution No. 2018-30478, approving Amendment No. 9, in the amount of \$71,200, for the provision of additional architectural and engineering services that included: 1) revisions associated with the relocation of the existing IT Room (currently located inside the historic lodge); 2) plan revisions to park-wide landscaping and concrete pathways (due to Hurricane Irma tree damages); 3) relocation of baseball field guy wires (due to the unforeseen conflict with the renovation of ADA ramps); 4) preparation of construction documents for the softball field as a “stand-alone” project and 5) preparation of a new specific purpose and topographic survey for Flamingo Park; and

WHEREAS, on July 17, 2019, the City Commission adopted Resolution No. 2019-30874 approving Amendment No. 10 in the amount of \$35,216, for the provision of additional architectural and engineering services as a result of a community request and direction from the City Commission to revisit the Flamingo Park Master Plan regarding tree retention and mitigation, and for the extension of construction administration services for the renovation of the Joe Rubin and Robert Haas handball courts for added scope of work associated to the restoration of stucco and project phasing; and

WHEREAS, On September 17, 2021, the City Commission adopted Resolution No. 2021-31837, approving Amendment No. 11 in the amount of \$365,800, for the provision of additional architectural and engineering professional services for the Flamingo Park Master Plan that include the implementation of resiliency strategies within the baseball field and softball field renovation projects, including an underground storm water retention system to assist in the collection, treatment, and disposal of storm water run-off from the Flamingo Park Neighborhood, and solar panels for the pedestrian lighting within the park; and

WHEREAS, on October 26, 2022, the City Commission adopted Resolution No. 2022-32346, approving Amendment No. 12 in the amount of \$194,361 for the provision of additional professional services for the Flamingo Park Master Plan associated with the design of an alternative storm water retention system, the redesign of the drainage systems for the baseball and softball fields, the design of corrective scope of work for newly identified unforeseen conditions at the baseball stadium, and to include an allowance for future unforeseen design requirements; and

WHEREAS, WA commenced the redesign of the softball field storm water collection and drainage systems, and as part of the design development process submitted 60% design drawings in late December 2023 which were shared with City departments for internal review; and

WHEREAS, in January 2023, City of Miami Beach departments provided plan review comments that included substantial additional scope of work and improvements including the addition of CCTV infrastructure, widening and shifting of concrete pathways, a new 12 feet wide double gate with removable bollards at Meridian Ave, increase field maintenance gates to 12 feet wide with concrete aprons, increase the height of all perimeter chain-link fencing, provide new bull pen/batting cage, provide additional park benches on concrete pads along the outfield pathways, include additional base mounts and pitch plates to accommodate multiple age groups, change backstop canopy height to 20 feet high, extend foul ball netting around the softball field, modify the outfield dimensions and home run fencing, include striping of a youth soccer field in the outfield, replace existing light poles in the central plaza, and revisions to the plant material in the landscape plans; and

WHEREAS, the City requested and received a proposal from WA for the provision of additional professional services associated with additional design scope of work, and modifications and improvements to the softball field; and

WHEREAS, the City also requested that WA include a \$25,000 design allowance for unforeseen conditions which would require their services; and

WHEREAS, the proposal for additional professional services has been reviewed and negotiated by staff in the not-to-exceed amount of \$82,853, including the requested design allowance for unforeseen conditions; and

WHEREAS, the negotiated fees are commensurate with the level of work contemplated for the additional scope of work required for this project; and

WHEREAS, simultaneously, this Amendment 13 shall credit the City \$241,158 for design and engineering services not yet completed, associated with the re-development of the Flamingo Park baseball field; and

WHEREAS, in order to expedite the design and construction of the re-development to the baseball field, City staff will identify specific scope which can be implemented with minimal or no interruption to the use of the field, such as the upgrade and replacement of sports lighting, or structural repairs to the bleachers; and

WHEREAS, City staff will also coordinate the remaining scope to take place in a manner which minimizes, to the extent possible, interruptions to the use of the baseball field;

and

WHEREAS, this Amendment No. 13 (Exhibit A) shall provide a net credit of \$158,305 and will revise the total contract amount to \$1,699,790.

NOW, THEREFORE, the parties hereto, and in consideration of the mutual promises, covenants, agreements, terms, and conditions herein contained, and other good and valuable consideration, the receipt and adequacy of which are hereby acknowledged, do agree as follows:

1. ABOVE RECITALS

The above recitals are true and correct and are incorporated as a part of this Amendment No. 13

2. MODIFICATIONS

- (a) The Agreement is amended as defined in Schedule "A-13", attached herein.
- (b) In consideration for the services to be performed under this Amendment No. 13, City shall deduct the amount of \$158,305.47, as provided in Schedule "B-13" and proposal dated 06/01/2023 (Revised) attached hereto.

3. OTHER PROVISIONS.

All other provisions of the Agreement, as amended, are unchanged.

4. RATIFICATION.

The City and Consultant ratify the terms of the Agreement, as amended by this Amendment No. 13.

IN WITNESS WHEREOF, the parties hereto have caused this Amendment No. 13 to be executed in their names by their duly authorized officials as of the date first set forth above.

ATTEST:

CITY OF MIAMI BEACH, FLORIDA

Rafael E. Granado, City Clerk

Dan Gelber, Mayor

ATTEST:

**CONSULTANT:
WOLFBERG ALVAREZ AND PARTNERS, INC.**

Rafael Labrada

Julio E. Alvarez, President

SCHEDULE "A-13" - SCOPE OF SERVICES
CITY OF MIAMI BEACH
Flamingo Park Master Plan
Amendment No. 13 – June 28, 2023

The following is an addendum to the original Scope of Work, Amendment No. 13, and to be provided by Wolfberg Alvarez and Partners team for the City of Miami Beach (City) relative to the proposed Flamingo Park Master Plan Project (Project). The terms of the Original Contract remain in force.

Consulting Services

The scope of work includes modifications to the softball field construction documents to incorporate additional items requested by Parks in their 60% review comments, as well as a meeting with CIP and Parks on 03/23/2023. Modifications to the plans include the following items:

All sidewalks/pathways are to be a minimum of 10ft wide and be 6" thick with reinforcement.

12ft Wide double gate with removable bollards to be provided at the Meridian Ave access. All other maintenance gates shall be a minimum of 12 feet wide to accommodate large vehicles.

Modifications to landscape plans.

Chain-link fencing in outfield and past backstop length to be 10ft high.

Bullpen/batting cage area to be provided along right field.

Shift concrete path around perimeter of outfield as required to accommodate revised field dimensions.

Shift fence which separates soccer from softball further north to accommodate new outfield dimensions.

Concrete pad is to be installed just outside of the maintenance gate on the south end.

Add more bench pads along the outfield path for spectators.

Shift the concrete path near the scoreboard to be as close to the scoreboard as possible.

Add base mounts at 70ft and 80ft.

Add additional pitching plates at 46ft distance and 54ft distance.

Backstop canopy height (fencing) to be 20 feet high.

30-foot-high sports netting to be installed all around softball field.

Revise geometry of softball field to be symmetrical with an approx. 235' or 250' outfield fence.

Include youth soccer field striping in the outfield.

Include empty conduit with pull strings for future CCTV cameras per mark-up prepared by Police.

Resubmit 60% drawings to City for review and comment.

Replace existing pedestrian light poles along central plaza, including new power, grounding, control, etc.

**SCHEDULE "B-13" – SUMMARY OF COSTS FOR CONSULTING SERVICES
CITY OF MIAMI BEACH
Flamingo Park Master Plan
Amendment No. 13 – June 28, 2023**

| SCHEDULE "B-13" | | | |
|--|-------------|------------------|----------------------|
| SUMMARY OF COSTS FOR CONSULTING SERVICES | | | |
| FLAMINGO PARK MASTER PLAN, MIAMI BEACH, FLORIDA | | | |
| DESCRIPTION | TYPE | FEES | |
| Softball Field Added Scope and Revisions | | | |
| Design Services | | Hourly, NTE | \$57,852.88 |
| Design Allowance | | | |
| City Request | | Hourly, NTE | \$25,000.00 |
| | | Subtotal: | \$82,852.88 |
| Design Services Credit | | | |
| Baseball Field | | LS | -\$241,158.35 |
| | | Subtotal: | -\$241,158.35 |
| | | | -158,305.47 |



Marcel R. Morlote, President
 Anis Garcia, Vice President
 Raul J. Estevez, Vice President
 Katrina L. Alvarez-Ruiz, Director
 David A. Wolfberg, Founder (1947-2015)
 Julio E. Alvarez, Founder (1947-2017)

75 VALENICA AVE., SUITE 1050, CORAL GABLES, FL 33134 PH. 305-666-5474

April 17, 2023
 April 19, 2023 (REVISED)
June 1, 2023 (REVISED)

via email: davidgomez@miamibeachfl.gov

David Gomez, LEED AP
 Division Director
 City of Miami Beach
 Office of Capital Improvement Projects
 1701 Meridian Avenue, Suite 300
 Miami Beach, FL 33139

RE: Flamingo Park
 WA Project No.: 28010.00
Subject: Proposal for Additional Services for Modifications to the Softball Field and Credit for Baseball Field Design Services

Dear Mr. Gomez:

Following is our additional services proposal for the above-noted Flamingo Park project tasks.

Softball Field:

The scope of work includes modifications to the softball field construction documents to incorporate additional items requested by Parks in their 60% review comments, as well as a meeting with CIP and Parks on 03/23/2023. Refer to attached marked-up plans. Modifications include the following items:

1. All sidewalks/pathways are to be a minimum of 10ft wide and be 6" thick with reinforcement. Current scope calls for some sidewalks to be 8ft wide and others 10ft wide.
2. 12ft Wide double gate with removable bollards to be provided at the Meridian Ave access. Current scope does not show a gate, it shows a proposed walkway connecting to existing sidewalk. All other maintenance gates should be a minimum of 12 feet wide to accommodate large vehicles.
3. Modifications to landscape plans as shown on marked-up dragging L-101 attached.
4. Chain-link fencing in outfield and past backstop length to be 10ft high. Current scope calls for 6ft-8ft high chain link fencing.
5. Bullpen/batting cage area to be provided along right field. Current scope does not call for a bull pen/batting cage or area.
6. Shift concrete path around perimeter of outfield as required to accommodate field dimensions.
7. Shift fence which separates soccer from softball further north to be right up against the soccer field.
8. Concrete pad is to be installed just outside of the maintenance gate on the south end.
9. Add more bench pads along the outfield path for spectators.
10. Shift the concrete path near the scoreboard to be as close to the scoreboard as possible.
11. Add base mounts at 70ft and 80ft. Current scope shows base mounts at 60ft.
12. Add additional pitching plates at 46ft distance and 54ft distance. Current scope shows pitching plate at 43ft.
13. Backstop canopy height (fencing) to be 20 feet high. Current scope shows backstop canopy height to be 18ft.
14. 30-foot-high sports netting to be installed all around softball field.
15. Revise geometry of softball field to be symmetrical with an approx. 235' or 250' outfield fence.
16. Include youth soccer field striping in the outfield.
17. Include empty conduit with pull strings for future CCTV cameras per mark-up prepared by Police.

Flamingo Park
Softball Field – Additional Services Proposal
WA Project No. 2801000
April 17, 2023
April 19, 2023 (REVISED)
June 1, 2023 (REVISED)
Page 2 of 2

18. Resubmit 60% drawings to City for review and comments.
19. Replace existing pedestrian light poles along central plaza, including new power, grounding, control, etc. See attached marked-up G-1.01.

The above noted scopes affect the civil, landscaping, architectural, and electrical disciplines as required.

Durations for Softball Field remaining Design Services:

1. Resubmit 60% documents: 6 weeks from NTP
2. Submit 90% documents (permit ready): 4 weeks from receipt of all City comments on the 60%.
3. Submit 100% documents (bid ready): 4 weeks from receipt of all City and permit comments on the 90%.

Baseball Field:

Additionally, this proposal includes a credit for all unused professional design services related to the Baseball Field renovation scope of work.

Compensation:

See attached Schedule B, dated June 1, 2023 for fee breakdown netting an overall credit of:(\$158,305.47)

Please advise if you have any questions or concerns.

Sincerely,



Rafael Labrada, RA
Project Manager

**AMENDMENT NUMBER 02 TO THE AGREEMENT BETWEEN CLIENT AND KIMLEY-HORN
AND ASSOCIATES, INC.**

This is Amendment number 02 dated April 14th, 2023, to the agreement between Wolfberg Alvarez & Partners ("Client") and Kimley-Horn and Associates, Inc. ("Consultant") dated July 16th, 2021 ("the Agreement") concerning Flamingo Park Improvements (the "Project").

The Consultant has entered into the Agreement with Client for the furnishing of professional services, and the parties now desire to amend the Agreement.

The Agreement is amended to include services to be performed by Consultant for compensation as set forth below in accordance with the terms of the Agreement, which are incorporated by reference.

Project Understanding

The City of Miami Beach requires redesign of the softball field as shown on the 60% Contract Documents submittal set. Consultant will perform the following services:

Task 1 – Landscape Architecture 60% Construction Documents Revisions

Kimley-Horn will revise the previously prepared and submitted Landscape Architecture 60% Construction Documents for the Softball Field to reflect the new size and layout of the softball field, addition of one (1) batting cage and layout and location of surrounding concrete walkways. In addition, Kimley-Horn will make revisions to the proposed tree species and marked-up by the Client.

Task 2 – Civil Engineering 60% Construction Documents Revisions

Kimley-Horn will revise the previously prepared and submitted Civil Engineering 60% Construction Documents for the Softball Field to reflect the new size and layout of the softball field, addition of one (1) batting cage and layout and location of surrounding concrete walkways.

Task 3 – Softball Field Layout, Material and Drainage Collection Plan Revisions

Kimley-Horn will revise the previously prepared and submitted Drainage 60% Construction Documents for the Softball Field including the layout, material, and subsurface drainage collection to reflect the new size and layout of the Softball Field.

For the services set forth above, Client shall pay Consultant the following compensation:

| Task | Description | Fees | Fee Type |
|---------------------|--|-----------------|-----------------|
| 1 | Landscape Architecture 60% Construction Documents Revisions | \$4,500 | Lump Sum |
| 2 | Civil Engineering 60% Construction Documents Revisions | \$7,000 | Lump Sum |
| 3 | Softball Field Layout, Material and Drainage Collection Plan Revisions | \$20,000 | Lump Sum |
| Total Amount | | \$31,500 | Lump Sum |

CLIENT:
WOLFBURG ALVAREZ & PARTNERS

CONSULTANT:
KIMLEY-HORN AND ASSOCIATES, INC.

By: _____

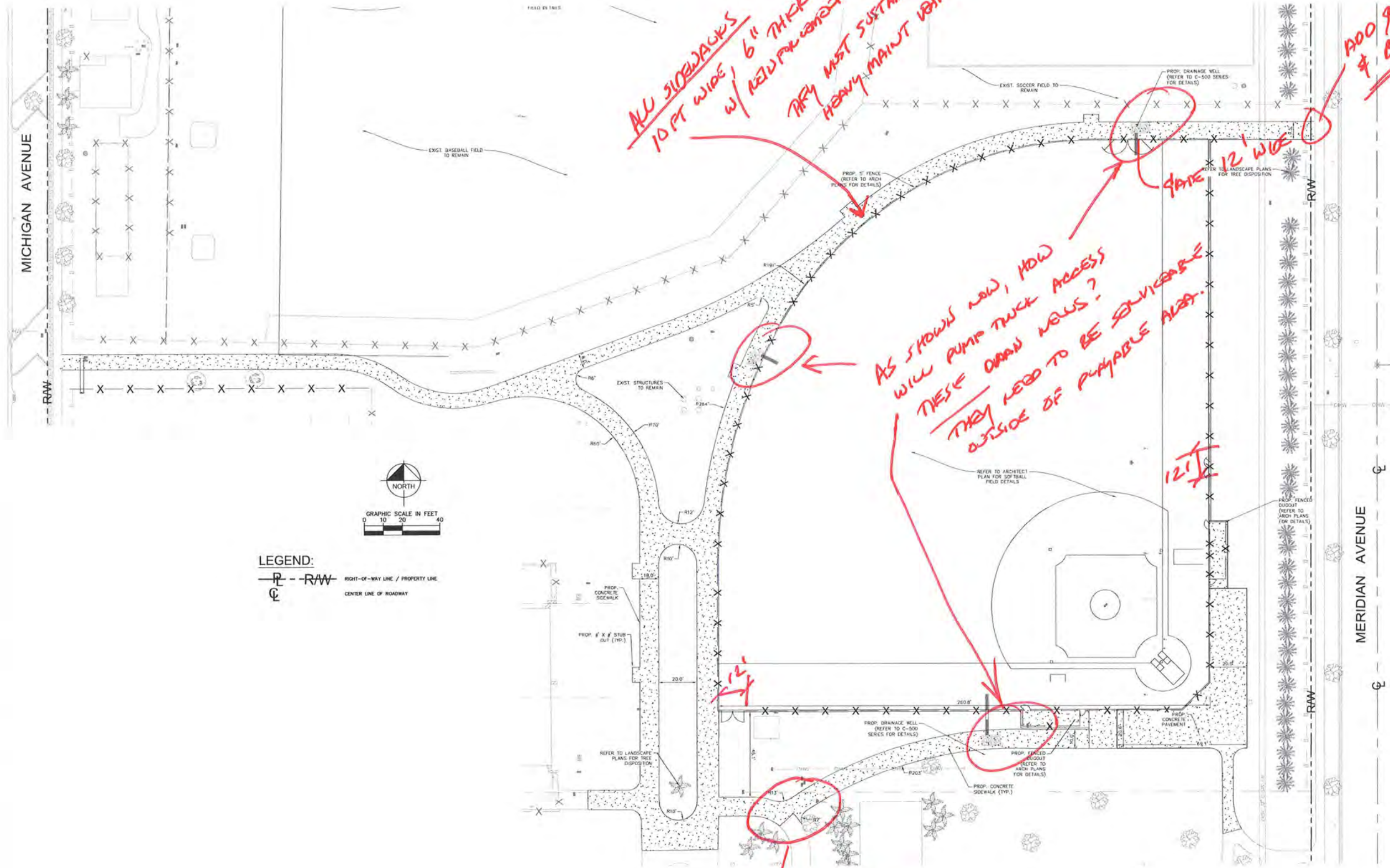
By: George Puig, PLA _____

Title: _____

Title: Project Manager _____

Date: _____

Date: _____



*ALL SIDEWALKS
10 FT WIDE, 6" THICK
w/ NEW CONCRETE
CURB MUST SUSTAIN
HEAVY MAINT VEHICLES!*

*AS SHOWN NOW, HOW
WILL PUMP TRUCK ACCESS
THESE DRAIN WELLS?
THEY NEED TO BE SERVICEABLE
OUTSIDE OF PUMPABLE AREA.*

*ADD GATE
& BOLLARDS*

*ARROW FOR
PUMP TRUCK
TURNING POINT*



FLAMINGO PARK - MASTER PLAN
SOFTBALL FIELD
1200 MERIDIAN AVE. MIAMI BEACH, FL 33139

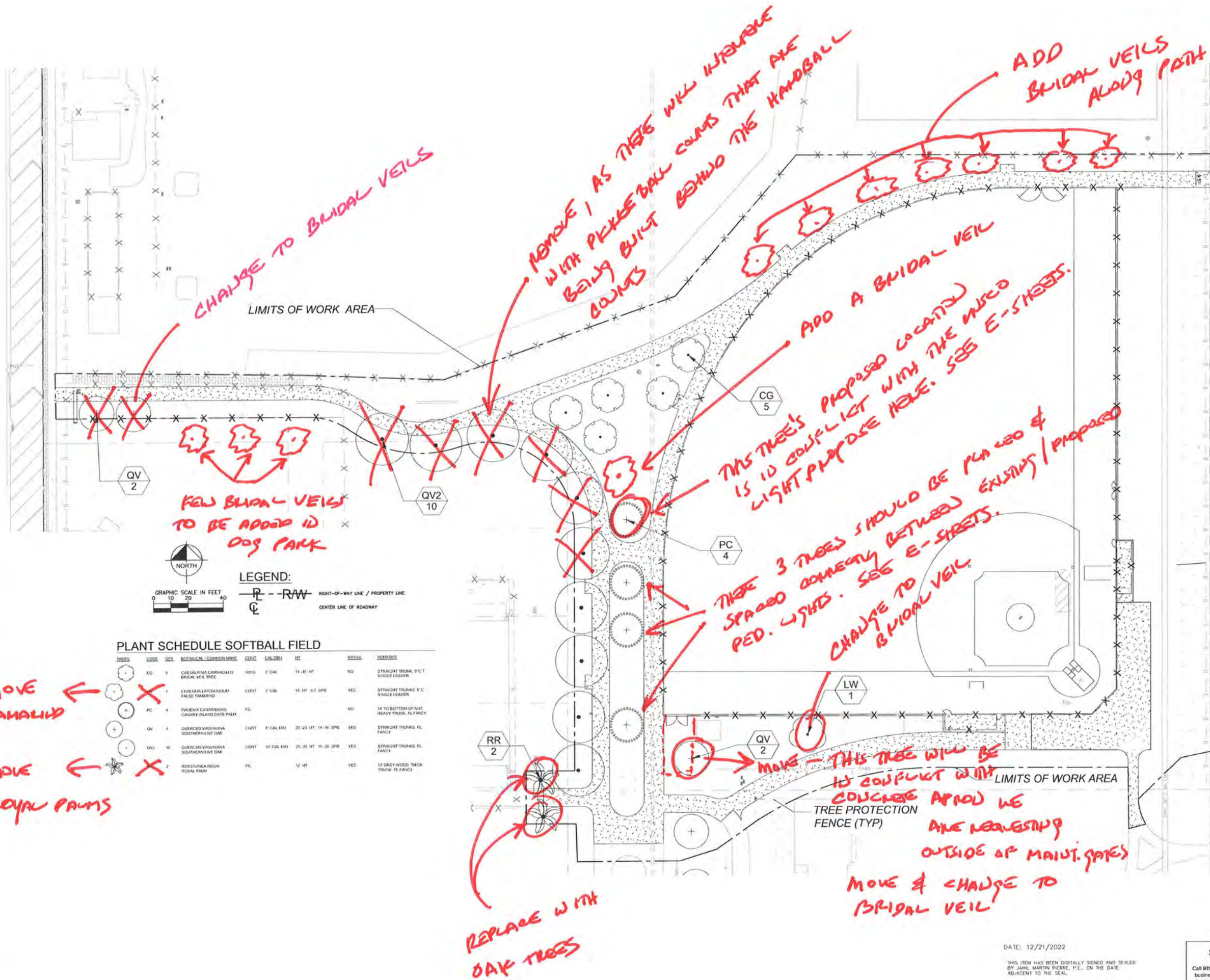
| | |
|-------------------------|---------------|
| WA PROJECT NO: 28010.00 | |
| ISSUE DATE | |
| 12/21/2022 | |
| NO. | REVISION DATE |
| | |
| | |
| | |
| | |
| | |
| | |
| | |
| | |
| | |
| | |
| | |

PLAYING FIELD PLAN
SHEET NUMBER
C-400

DATE: 12/21/2022
THIS ITEM HAS BEEN DIGITALLY SIGNED AND SEALED BY JAMIL MARTIN PIERRE, P.E., ON THE DATE ADJACENT TO THE SEAL.
PRINTED COPIES OF THIS DOCUMENT ARE NOT CONSIDERED SIGNED AND SEALED AND THE SIGNATURE MUST BE VERIFIED ON ANY ELECTRONIC COPIES.

Sunshine
Call 811 or visit sunshine811.com two full business days before digging to have buried facilities located and marked.
Check positive responder codes before you dig!

To the best of the Architect's or Engineer's knowledge, the plans and specifications comply with the applicable minimum codes and the applicable fire-safety standards as determined by the local authority in accordance with F.B.C. section 110.8.4.4 and Chapter B.33, Florida Statutes.



LEGEND:
 - - - - - RAW RIGHT-OF-WAY LINE / PROPERTY LINE
 C CENTER LINE OF ROADWAY

PLANT SCHEDULE SOFTBALL FIELD

| TREES | CODE | QTY | BOTANICAL COMMON NAME | SPRINT | CALIBER | HT | NOTES | REMARKS |
|-------|------|-----|--|--------|-------------|--------------------|-------|--|
| | EG | 5 | CAESALPINA GRANADILLA BRIDAL VEIL TREE | ROOT | 3" DIA | 11-16 FT | NO | STRAIGHT TRUNK, 9' CT SINGLE LEADER |
| | 1 | | LYSICALATONIA FALSE TAMARIND | CONT | 3" DIA | 14 FT 6-7 SPR | YES | STRAIGHT TRUNKS 9' C SINGLE LEADER |
| | PC | 4 | PRENAN CANARIENSIS CANARY ISLAND DATE PALM | FG | | | NO | 14 TO BOTTOM OF HT HEAVY TRUNK, FL FANCY |
| | QV | 4 | QUERCUS VIRGINIANA SOUTHERN WHITE OAK | CONT | 8" CAL DIA | 22-24 FT 14-16 SPR | YES | STRAIGHT TRUNKS FL FANCY |
| | QV | 10 | QUERCUS VIRGINIANA SOUTHERN WHITE OAK | CONT | 10" CAL DIA | 25-30 FT 16-20 SPR | YES | STRAIGHT TRUNKS FL FANCY |
| | 2 | | ROYSTONIA REGIA ROYAL PALM | FG | | 12 FT | YES | 12 GREY WOOD THICK TRUNK FL FANCY |

REMOVE ← NO TAMALIND
 REMOVE ← NO ROYAL PALMS



MIAMI BEACH
 1700 CONVENT CENTER DR
 MIAMI BEACH, FLORIDA 33139
 Kimley Horn

FLAMINGO PARK - MASTER PLAN
 SOFTBALL FIELD
 1200 MERIDIAN AVE. MIAMI BEACH, FL 33139

| | |
|----------------|---------------|
| WA PROJECT NO. | 28010.00 |
| ISSUE DATE | 12/21/2022 |
| NO. | REVISION DATE |
| | |
| | |

LANDSCAPE PLAN
 SHEET NUMBER
 L-101

DATE: 12/21/2022

THIS ITEM HAS BEEN DIGITALLY SIGNED AND SEALED BY JAMIL MARTIN FIERRE, P.L. ON THE DATE ADJACENT TO THE SEAL.
 PRINTED COPIES OF THIS DOCUMENT ARE NOT CONSIDERED SIGNED AND SEALED AND THE SIGNATURE MUST BE VERIFIED ON ANY ELECTRONIC COPIES.

Sunshine 811
 Call 811 or visit sunshine811.com two full business days before digging to have buried facilities located and marked. Check positive response codes before you dig!



SEAL

MIAMI BEACH

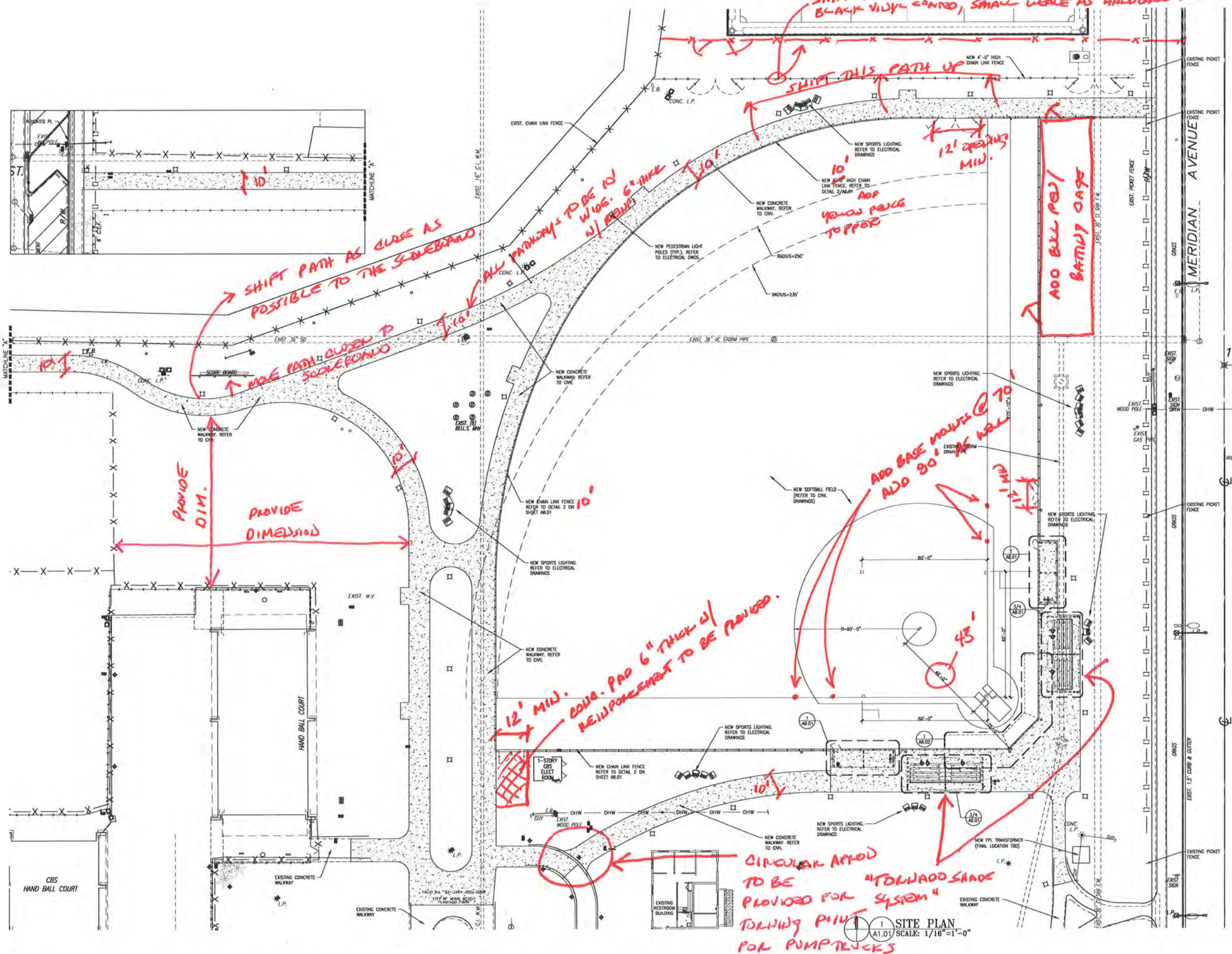
FLAMINGO PARK - MASTER PLAN SOFTBALL FIELD

1200 MERIDIAN AVE. MIAMI BEACH, FL 33139

| | |
|-------------------|------------|
| WA PROJECT NO: | 20010.00 |
| ISSUE DATE | 12/21/2022 |
| NO. REVISION DATE | |

| | |
|--------------|-------|
| SITE PLAN | |
| SHEET NUMBER | A1.01 |

60% SUBMITTAL

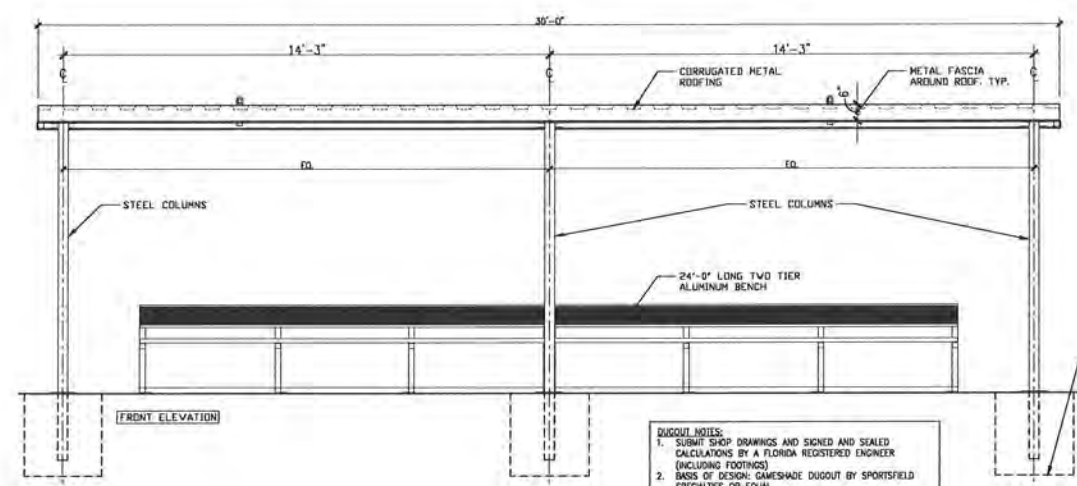


To the best of the Architect's or Engineer's knowledge, the plans and specifications comply with the applicable minimum codes and the applicable fire-safety standards as determined by the local authority in accordance with F.B.C. section 110.8.4.4 and Chapter 633, Florida Statutes.



SEAL
MARCEL R. MONTE, AIA,
FL ARCH. REG. NO. 9554

WOLFBERG ALVAREZ & PARTNERS INC.
1100 CONVENT ROAD, SUITE 100
MIAMI BEACH, FLORIDA 33139
TEL: 305.674.1100
FAX: 305.674.1101
WWW.WOLFBERGALVAREZ.COM



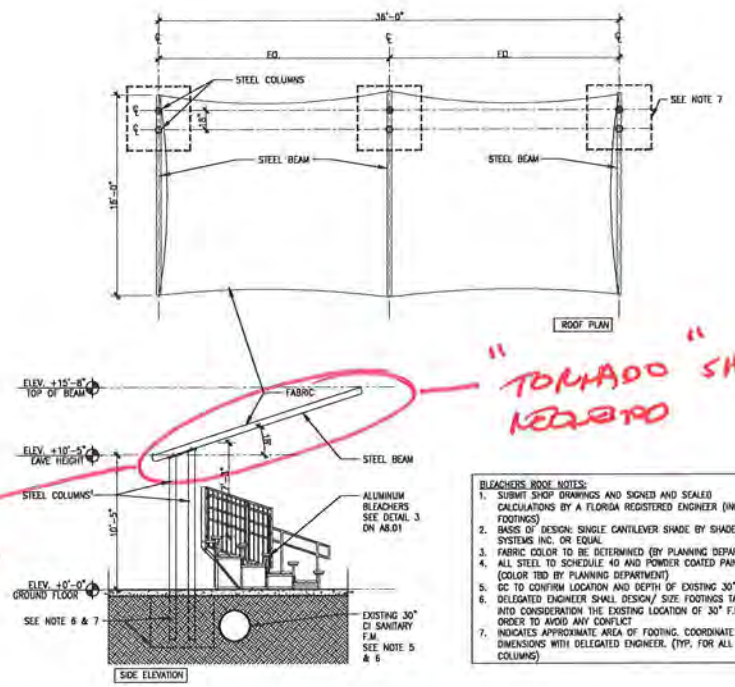
1 DUGOUT DETAILS
AB.01/SCALE: 1/2"=1'-0"

- DUGOUT NOTES:
1. SUBMIT SHOP DRAWINGS AND SIGNED AND SEALED CALCULATIONS BY A FLORIDA REGISTERED ENGINEER (INCLUDING FOOTINGS)
 2. BASIS OF DESIGN: GAMESHADE DUGOUT BY SPORTSFIELD SPECIALTIES OR EQUAL
 3. ALL STEEL TO BE POWDER COATED PAINTED (COLOR TBD BY PLANNING DEPARTMENT)
 4. INDICATES APPROXIMATE AREA OF FOOTING. COORDINATE EXACT DIMENSIONS WITH DELEGATED ENGINEER. (TYP. FOR ALL COLUMNS)

NO COLOR TO BE BLACK

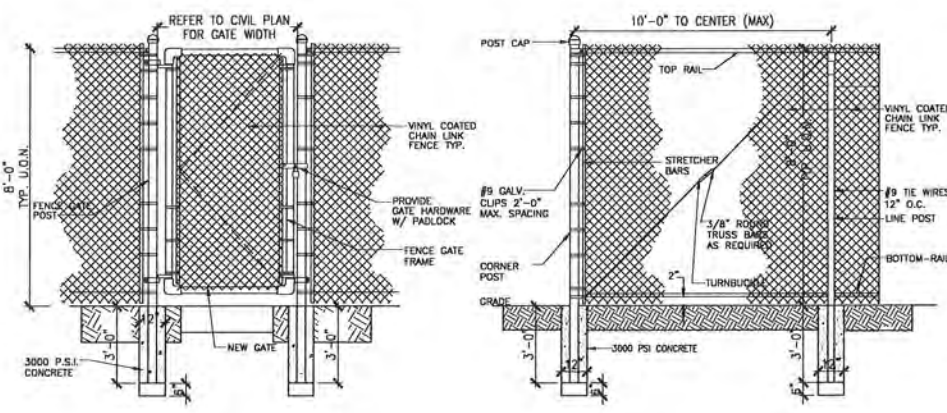
VISIT SHADE SYSTEMS SITE FOR EXAMPLE

ALL FENCING BLACK VINYL COATED: MATCH GAUGE & GAUGE SIZE OF BASEBALL FENCE

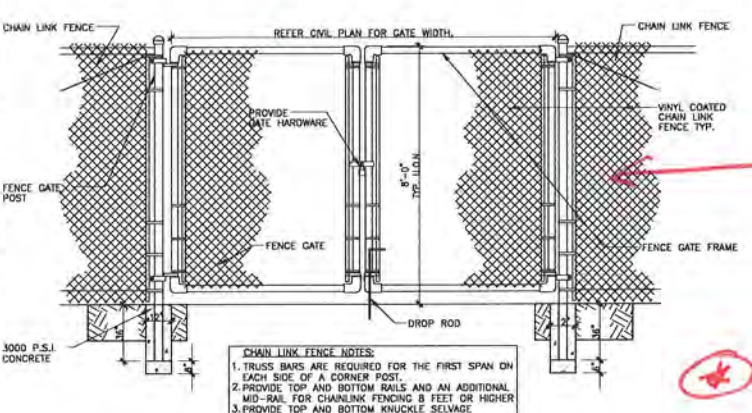


4 BLEACHERS ROOF DETAILS
AB.01/SCALE: 3/16"=1'-0"

- BLEACHERS ROOF NOTES:
1. SUBMIT SHOP DRAWINGS AND SIGNED AND SEALED CALCULATIONS BY A FLORIDA REGISTERED ENGINEER (INCLUDING FOOTINGS)
 2. BASIS OF DESIGN: SINGLE CANTILEVER SHADE BY SHADE SYSTEMS INC. OR EQUAL
 3. FABRIC COLOR TO BE DETERMINED BY PLANNING DEPARTMENT
 4. ALL STEEL TO SCHEDULE 40 AND POWDER COATED PAINTED (COLOR TBD BY PLANNING DEPARTMENT)
 5. GC TO CONFIRM LOCATION AND DEPTH OF EXISTING 30" F.M. IN ORDER TO AVOID ANY CONFLICT
 6. DELEGATED ENGINEER SHALL DESIGN/ SIZE FOOTINGS TAKING INTO CONSIDERATION THE EXISTING LOCATION OF 30" F.M. IN ORDER TO AVOID ANY CONFLICT
 7. INDICATES APPROXIMATE AREA OF FOOTING. COORDINATE EXACT DIMENSIONS WITH DELEGATED ENGINEER. (TYP. FOR ALL COLUMNS)



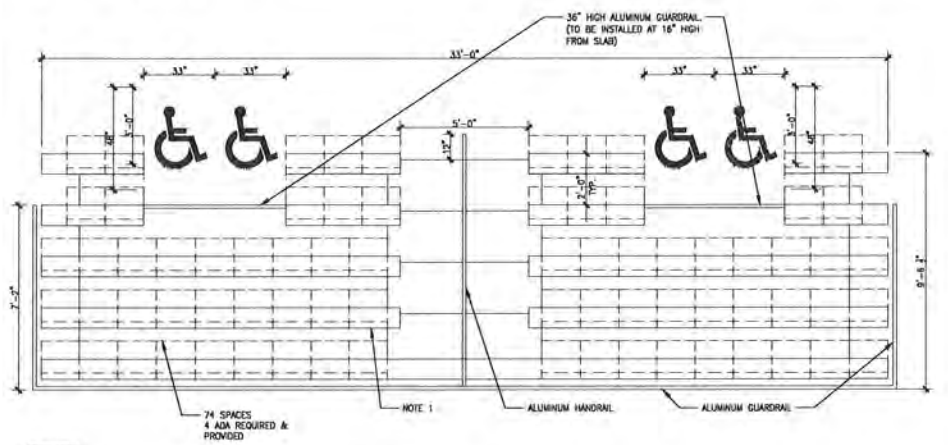
2 TYPICAL CHAIN LINK DETAILS
AB.01 SCALE: 3/8"=1'-0"



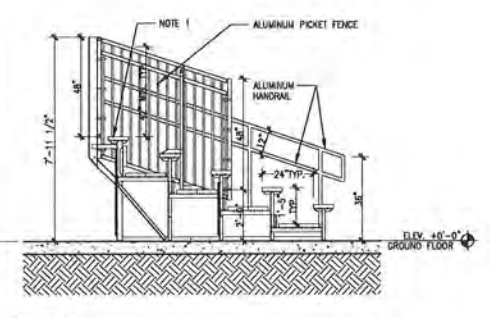
- CHAIN LINK FENCE NOTES:
1. TRUSS BARS ARE REQUIRED FOR THE FIRST SPAN ON EACH SIDE OF A CORNER POST.
 2. PROVIDE TOP AND BOTTOM RAILS AND AN ADDITIONAL MID-RAIL FOR CHAINLINK FENCING 8 FEET OR HIGHER
 3. PROVIDE TOP AND BOTTOM KNUCKLE SELVAGE
 4. ALL CHAIN LINK FENCE TO BE VINYL COATED (BLACK COLOR)
 5. GC TO SUBMIT SIGNED AND SEALED SHOP DRAWINGS AND CALCULATIONS BY A REGISTERED FLORIDA ENGINEER
 6. REPLACEMENT OF DOG PARK CHAIN LINK FENCE SHALL BE VINYL COATED (GREEN COLOR TO MATCH EXISTING)
 7. MEMBER SIZES/ SPACING AND FOOTINGS SHOWN ARE MINIMUM SIZES. ACTUAL SIZES OF COMPONENTS TO COMPLY WITH STRUCTURAL HISTORY SHALL BE AS DETERMINED BY THE DELEGATED ENGINEER.

YELLOW FENCE TOPPER AT TOP OF FENCE. SEE PICTURE PROVIDED IN EMAIL

FENCE SHOULD HAVE SOME TYPE OF ANTI-BULGE MECHANISM.



3 SOFTBALL FIELD BLEACHERS DETAILS
AB.01 SCALE: 3/8"=1'-0"



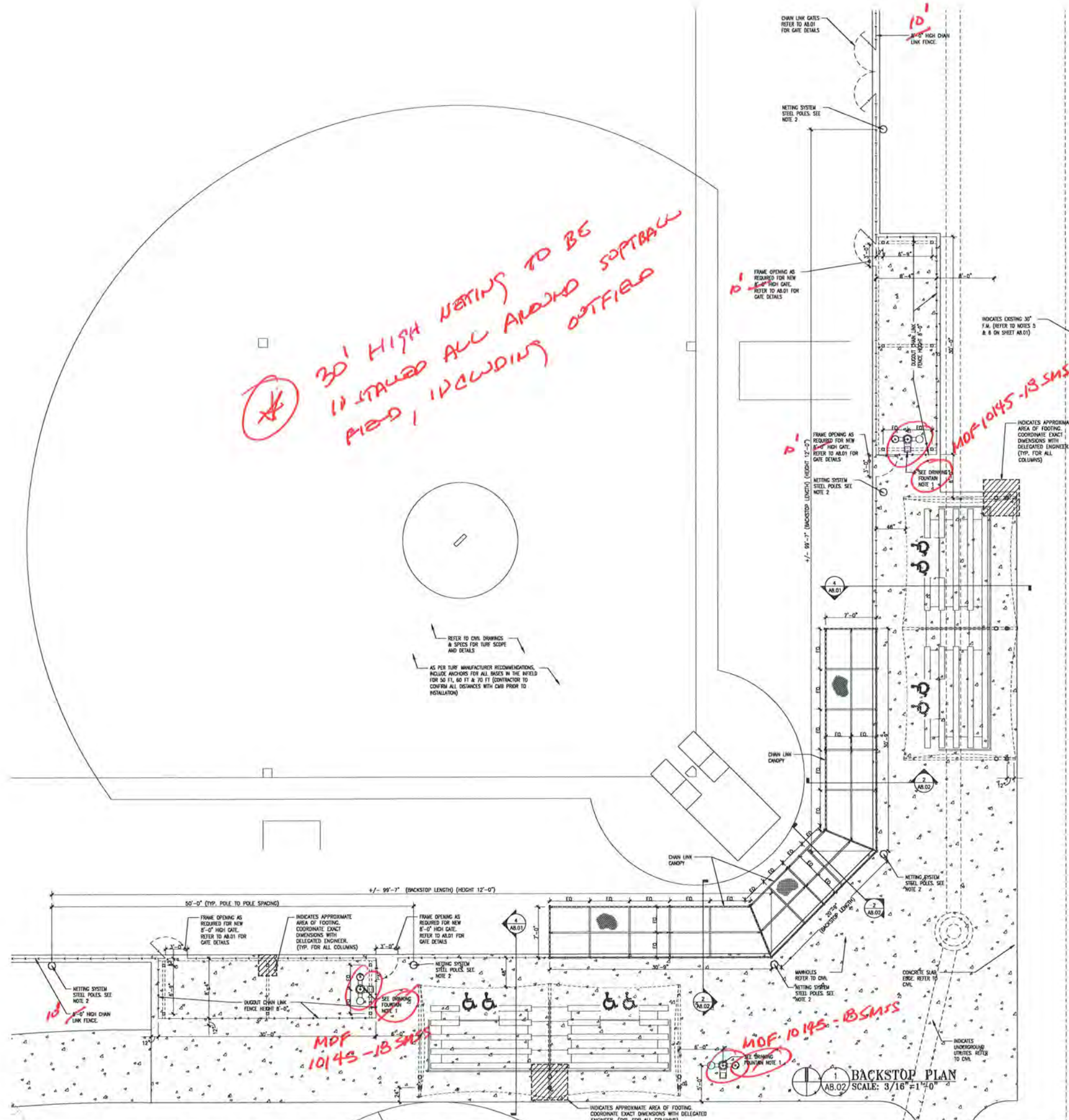
- BLEACHERS NOTES:
1. BASIS OF DESIGN: 5 ROW ALUMINUM ADA BLEACHERS BY HIGHLAND PRODUCTS GROUP LLC OR EQUAL
 2. SUBMIT SHOP DRAWINGS AND SIGNED AND SEALED CALCULATIONS BY A FLORIDA REGISTERED ENGINEER (INCLUDING ATTACHMENTS TO SLAB ON GRADE)

FLAMINGO PARK - MASTER PLAN
SOFTBALL FIELD
1200 MERIDIAN AVE. MIAMI BEACH, FL 33139

60% SUBMITTAL

| | |
|-----------------|----------------|
| WA PROJECT NO.: | 2019.02 |
| ISSUE DATE: | 12/21/2022 |
| NO.: | REVISION DATE: |

DETAILS
SHEET NUMBER
A8.01



30' HIGH NETTING TO BE INSTALLED ALL AROUND SOFTBALL FIELD, INCLUDING OUTFIELD

MDF 10145-18 SMSF

MDF 10145-18 SMSF

MDF 10145-18 SMSF

MDF 10145-18 SMSF

NEW DRINKING WATER FOUNTAIN NOTES:
1. BASE OF DESIGN: PEDIestal DRINKING FOUNTAINS 10150 SMOX CHILLED BY WOF OR EDUA (COLOR-CRISTAL MATE) (WITH SS SURFACE CARRIER) ADA REFER TO PLUMBING DRAWINGS FOR ADDITIONAL INFO.

3 DRINKING WATER FOUNTAIN ELEVATION
SCALE: N.T.S.

20 FEET



SEAL

MARCELO H. MORALES, A.A.A.
FL. ARCH. REG. NO. 5984



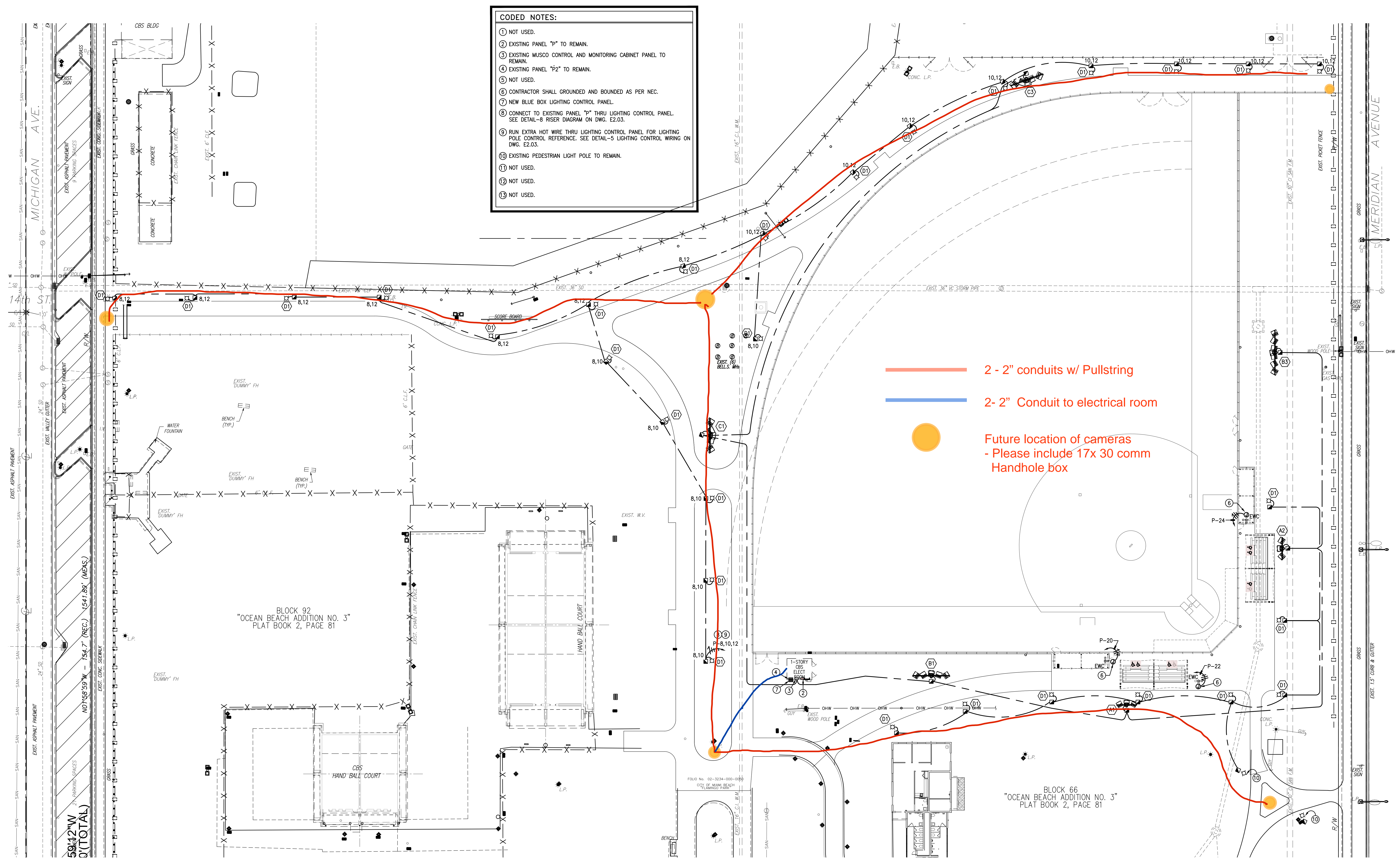
FLAMINGO PARK - MASTER PLAN
SOFTBALL FIELD
1200 MERIDIAN AVE. MIAMI BEACH, FL 33139

| | |
|-----------------|---------------|
| WA PROJECT NO.: | 1610.00 |
| ISSUE DATE: | 12/21/2022 |
| NO.: | REVISION DATE |

60% SUBMITTAL

DETAILS
SHEET NUMBER
A8.02

Infrastructure for Police Cameras



**City of Miami Beach
Butterfly Garden**

Zoning Information

SITE ADDRESS: 1200 Meridian Avenue, Miami Beach, Florida 33139-4805

FOLIO NUMBER: 02-3234-000-0050

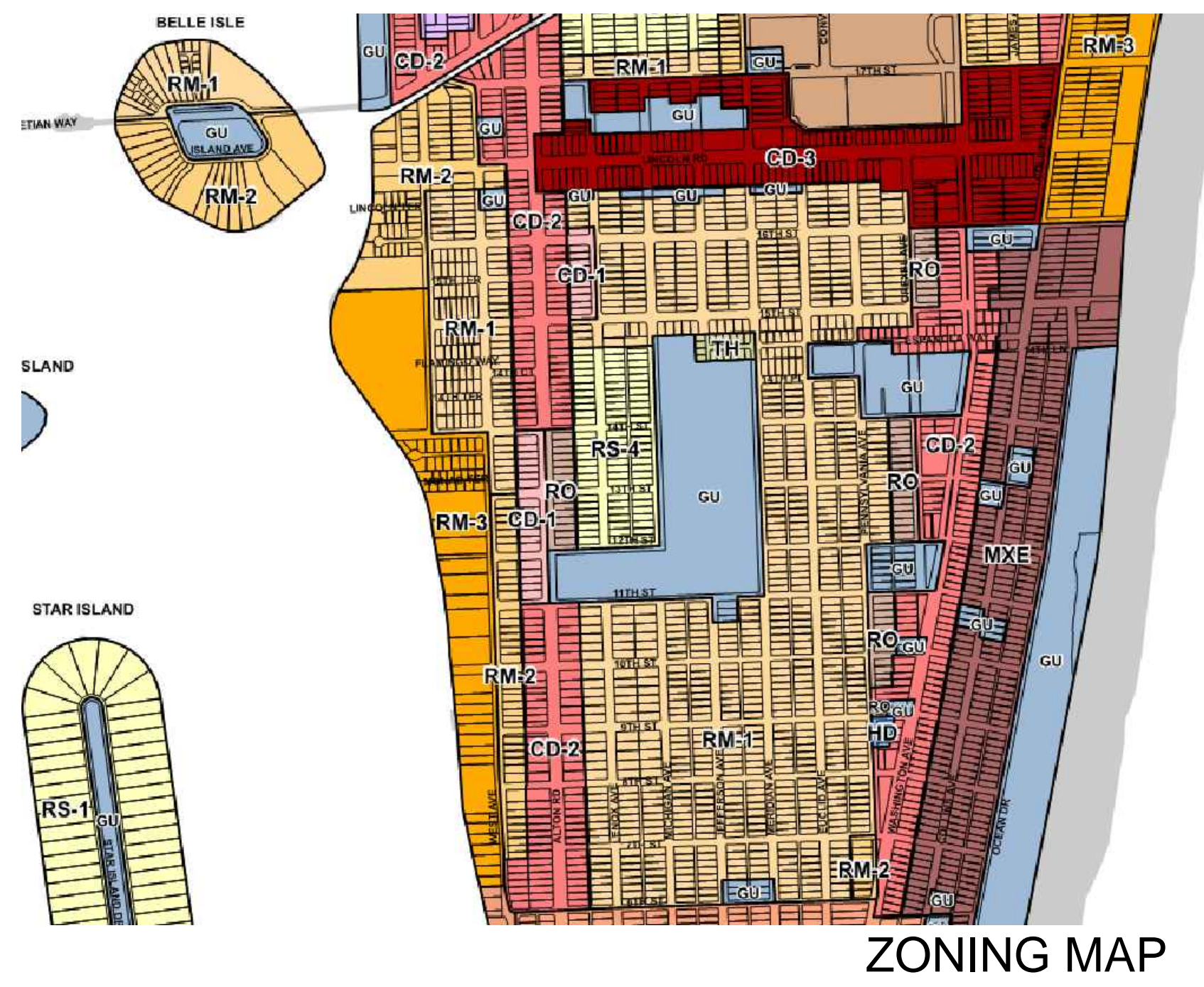
ZONING : **GU, Government Use District**
As per Division 9, GU, Sec. 142-425 - Development regulations as an average of the requirements contained in the surrounding district.

Immediate Surrounding District:
* West Property Boundary: RS-4, Single Family Residential District

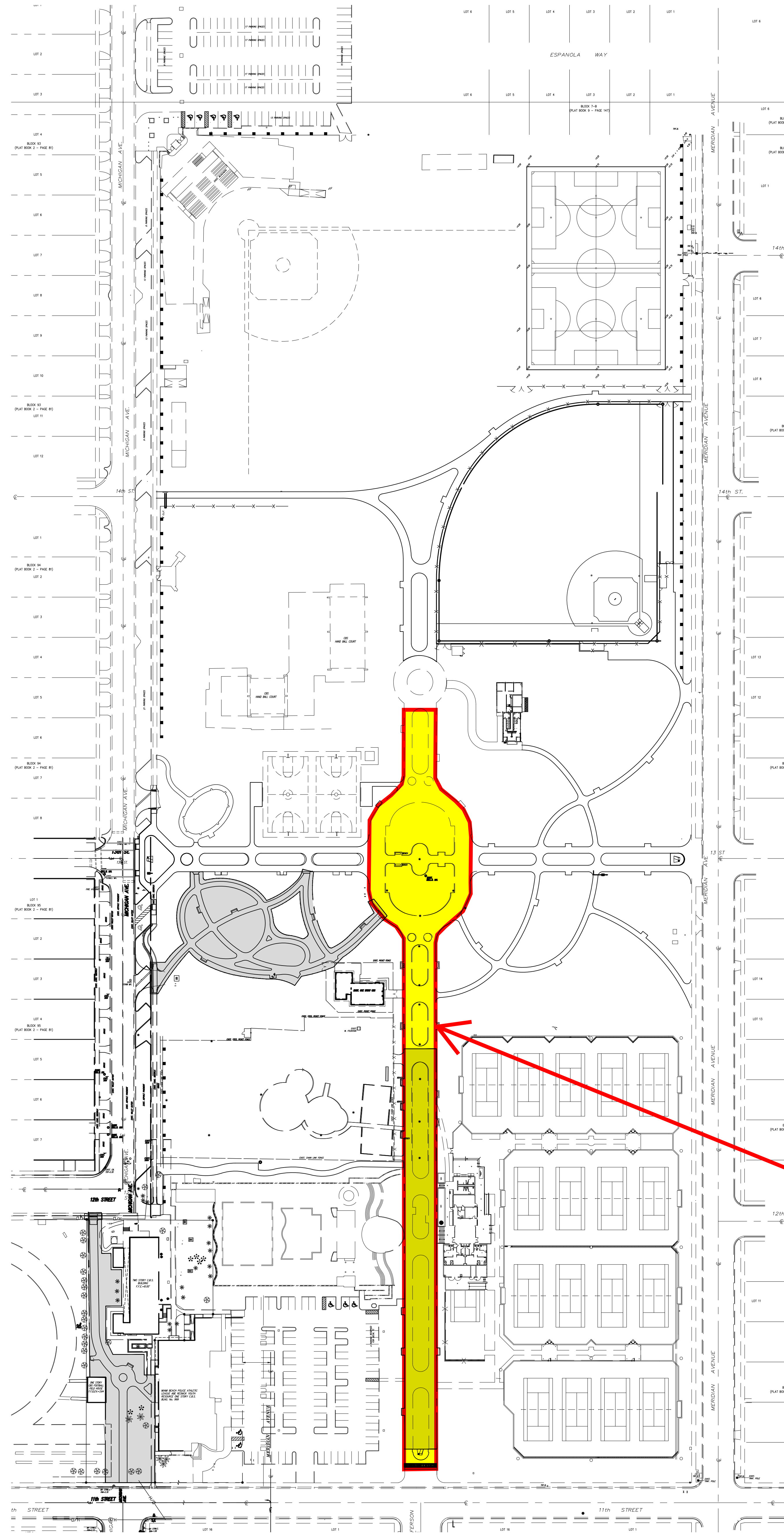
FUTURE LAND USE DESIGNATION: ROS, Recreation and Open Space

DISTRICT : Flamingo Park Historic District
Miami Beach Architectural District

USE: Park, as per Sec 142-422
Butterfly Garden



- SCOPE OF WORK NARRATIVE:**
- NEW BUTTERFLY GARDEN:
 - NEW DRINKING WATER FOUNTAIN, TRASH RECEPTACLES & BENCHES
 - NEW LANDSCAPE AND IRRIGATION IMPROVEMENTS
 - NEW CONCRETE WALKWAYS
 - NEW LIGHT FIXTURES POLES AROUND WALKWAYS
 - NEW DRAINAGE IMPROVEMENTS
 - EXISTING NORTH-SOUTH PATH FROM CENTRAL PLAZA IMPROVEMENTS:
 - NEW LANDSCAPE AND IRRIGATION IMPROVEMENTS
 - NEW LIGHT FIXTURES POLES AROUND WALKWAYS
 - NEW TRASH RECEPTACLES & BENCHES
 - NEW BIKE PATH CONNECTING 11TH AND 12TH STREETS ALONG MICHIGAN AVENUE:
 - NEW LANDSCAPE AND IRRIGATION IMPROVEMENTS
 - NEW LIGHT FIXTURES POLES AROUND WALKWAYS
 - NEW TRASH RECEPTACLES & BENCHES



Replace existing lighting poles and reconnect to existing branch circuit. Refer to area highlighted in yellow

INDEX OF DRAWINGS

| SHEET | DESCRIPTION | | |
|--------------|--|---|--|
| GENERAL | | | |
| G1.00 | COVER SHEET | ● | |
| G1.01 | INDEX OF DRAWINGS & LOCATION MAP | ● | |
| SV1.00 | SURVEY | ● | |
| CIVIL | | | |
| C.1 | SITE PLAN | ● | |
| C.2 | SITE PLAN | ● | |
| C.3 | GRADING & DRAINAGE PLAN | ● | |
| LANDSCAPE | | | |
| L.0.01 | BUTTERFLY GARDEN EXISTING TREE DISPOSITION PLAN | ● | |
| L.0.02 | BIKE PATH EXISTING TREE DISPOSITION PLAN | ● | |
| L.0.03 | N/S EXISTING TREE DISPOSITION PLAN | ● | |
| L.1.01 | BUTTERFLY GARDEN LANDSCAPE PLAN- TREES AND PALMS | ● | |
| L.1.02 | BUTTERFLY GARDEN LANDSCAPE PLAN- UNDERSTORY | ● | |
| L.1.03 | BIKE PATH LANDSCAPE PLANTREES AND PALMS | ● | |
| L.1.04 | N/S PROMENADE LANDSCAPE PLAN- TREES AND PALMS | ● | |
| L.2.01 | LANDSCAPE DETAILS & NOTES | ● | |
| ARCHITECTURE | | | |
| A1.01 | SITE PLAN | ● | |
| A1.02 | FLOOR PLAN | ● | |
| A1.03 | FLOOR PLAN | ● | |
| A1.06 | SITE FURNISHINGS | ● | |
| A8.01 | ESTATE FENCE DETAILS | ● | |
| PLUMBING | | | |
| P3.01 | PLUMBING SITE PLAN | ● | |
| ELECTRICAL | | | |
| E1.01 | LEGEND & NOTES | ● | |
| E2.01 | COMPREHENSIVE SITE PLAN | ● | |
| E2.02 | LIGHTING SITE PLAN | ● | |
| E2.03 | LIGHTING SITE PLAN | ● | |
| E2.04 | GENERAL DETAILS | ● | |
| E2.05 | GENERAL DETAILS | ● | |

WOLFBERG ALVAREZ
ARCHITECTURE ENGINEERING
75 VALENCIA AVE., SUITE 1000
CORAL GABLES, FLORIDA 33134
V 305.666.6474
F 305.666.6914
WWW.WOLFBERGFALVAREZ.COM
EA 002416 EB 002354

SEAL
MARCEL R. MORLOTE, A.I.A.
FL ARCHITECT
FL ARCH. REG. NO. 8564

MIAMI BEACH
1700 CONVENTION CENTER DR.
MIAMI BEACH, FLORIDA 33139

**FLAMINGO PARK - MASTERPLAN
BUTTERFLY GARDEN &
GENERAL IMPROVEMENTS**
1200 MERIDIAN AVE. MIAMI BEACH, FL 33139

WA PROJECT NO.: 28010.00

ISSUE DATE
01/31/2018

NO. REVISION DATE

INDEX OF DRAWINGS

SHEET NUMBER
G1.01