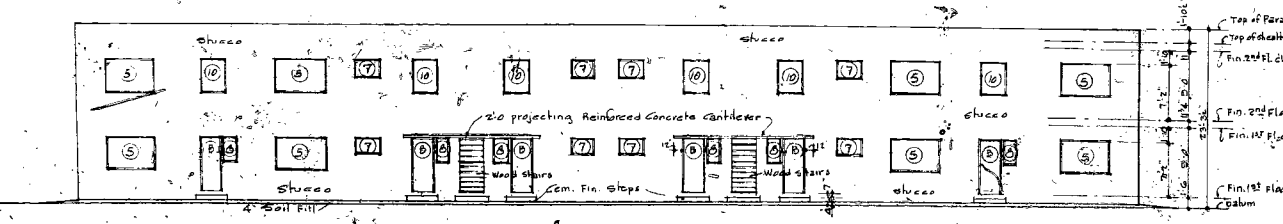
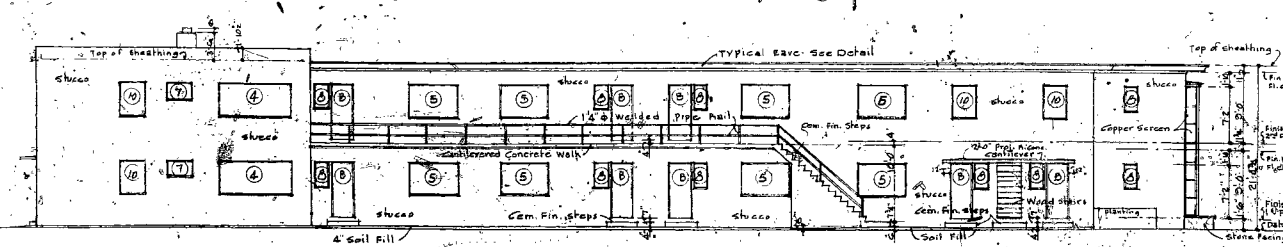


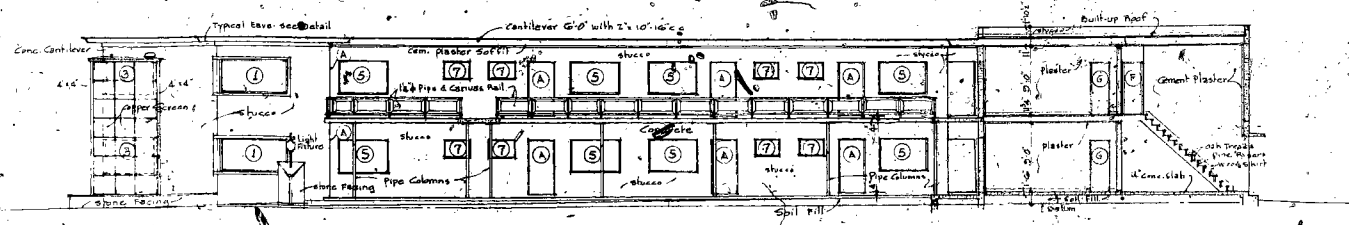
EAST ELEVATION
Scale: 1/8" = 1'-0"



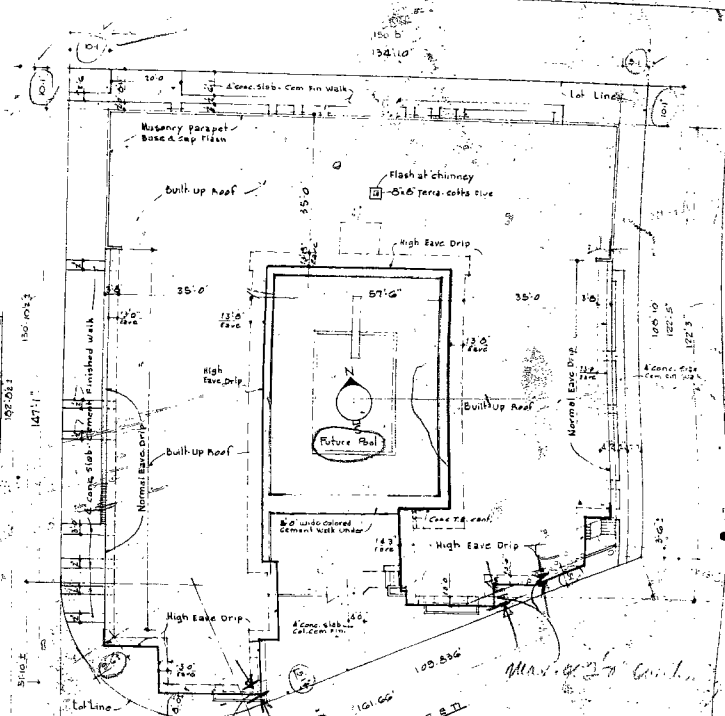
NORTH ELEVATION
Scale: 1/8" = 1'-0"



WEST ELEVATION
Scale: 1/8" = 1'-0"



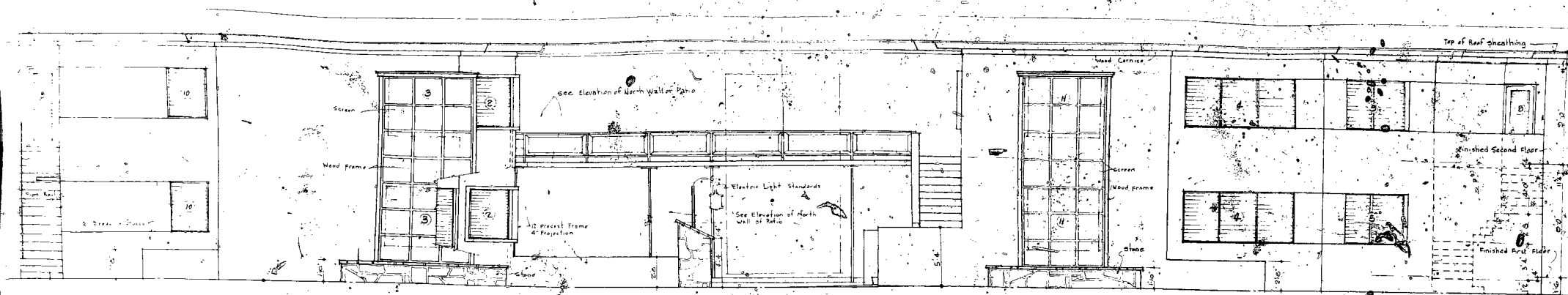
EAST ELEVATION OF WEST WING - PATIO
Scale: 1/8" = 1'-0"



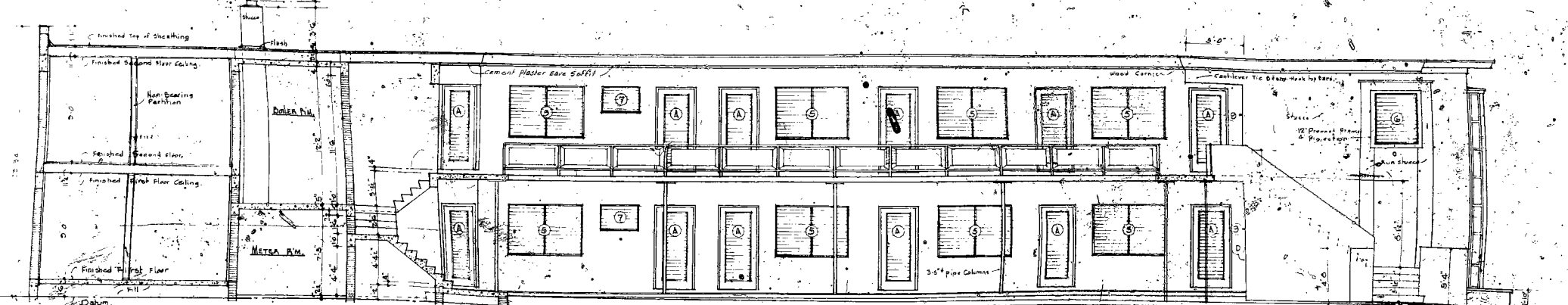
ROOF & PLOT PLAN
Scale: 1/8" = 1'-0"

355-19 ST.
R.E. #17

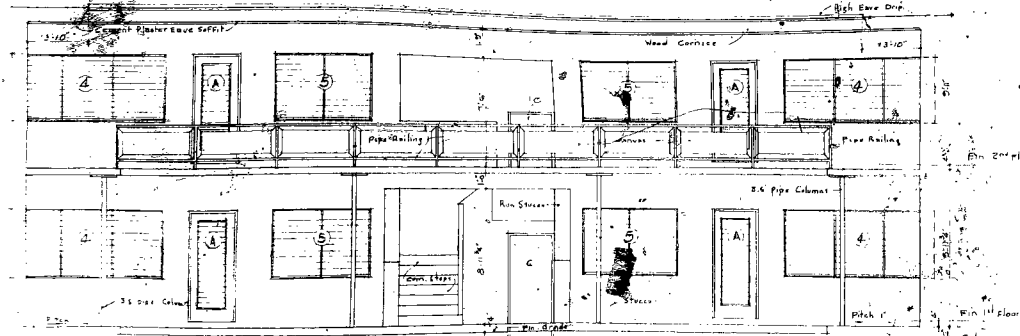
MACHAY AND GLASS ARCHITECTS
501 N. B. ST. MIAMI, FLA.
A 32 UNIT APARTMENT BLDG.
FOR
CHAVES CONSTRUCTION CO.
355-19th Street Miami, Fla.
PLOT PLAN - ELEVATIONS
SHEET NO. 2



SOUTH ELEVATION
Scale: 1/4" = 1'-0"



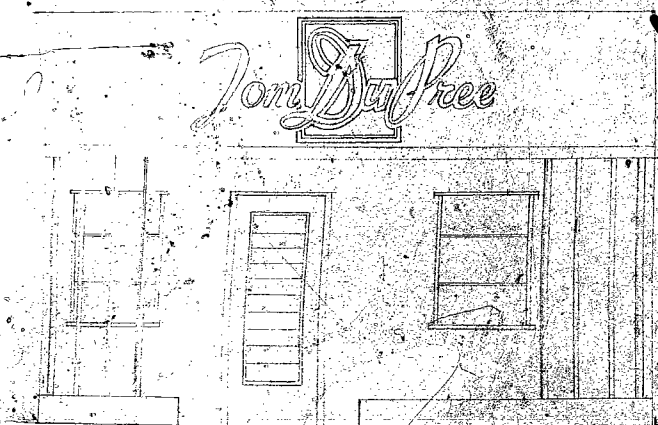
WEST ELEVATION OF EAST WING - PATIO
Scale: 1/4" = 1'-0"



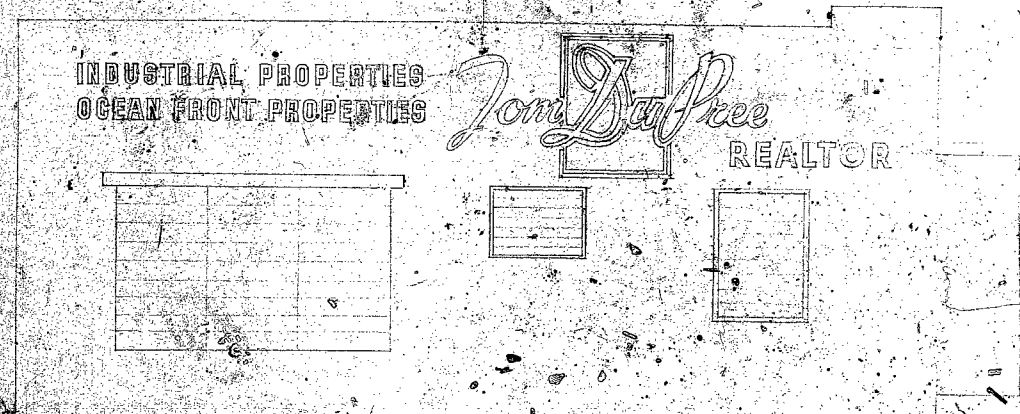
ELEVATION OF NORTH WALL OF PATIO
Scale: 1/4" = 1'-0"

36861

MACRAY AND GIBBS ARCHITECTS
127 PERRY ROAD STREET MIAMI BEACH, FLORIDA
A 2E UNIT APARTMENT BLDG.
FOR
CHAVE'S CONST. CO.
335 19th Street Miami Beach, Florida
ELEVATIONS 1



EAST ELEVATION
SCALE 1/2" = 1'-0"

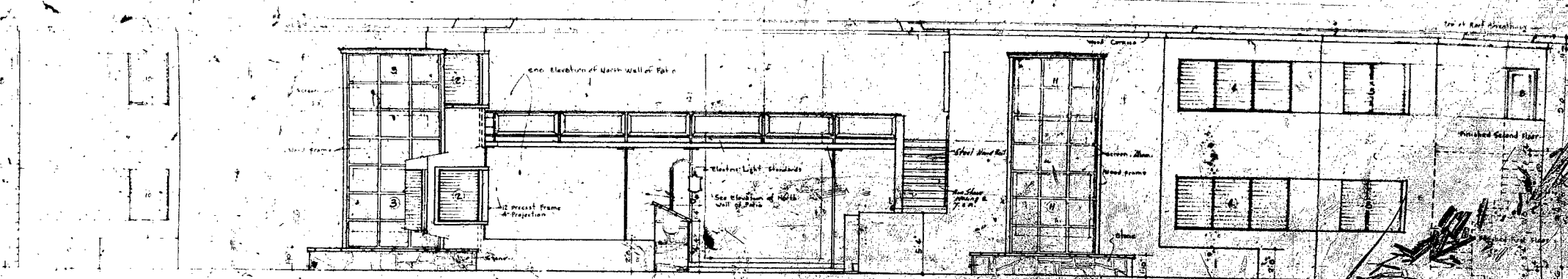


SOUTH ELEVATION
SCALE 1/2" = 1'-0"

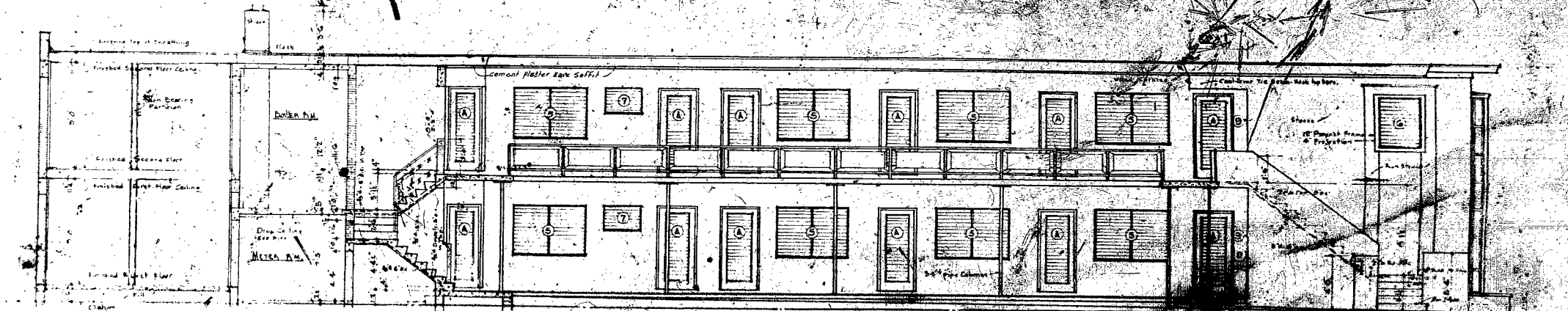
SUGGESTED LAYOUTS FOR TOM DUFREE
MIAMI BEACH FLA.
SKETCH #5468 APR 23/51
The E. F. Elliott Co.
MIAMI, FLA.

36861-62

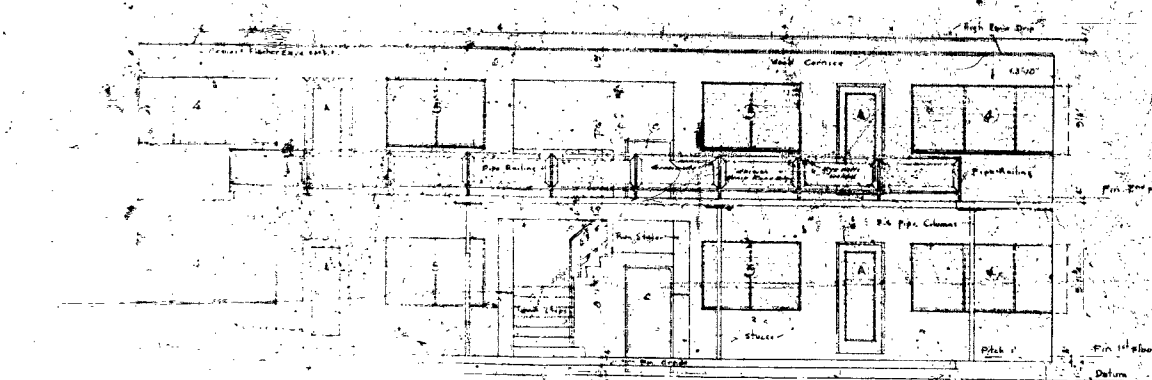
①



SOUTH ELEVATION
Scale: 1/4" = 1'-0"



WEST ELEVATION OF EAST WING - PATIO
Scale: 1/4" = 1'-0"

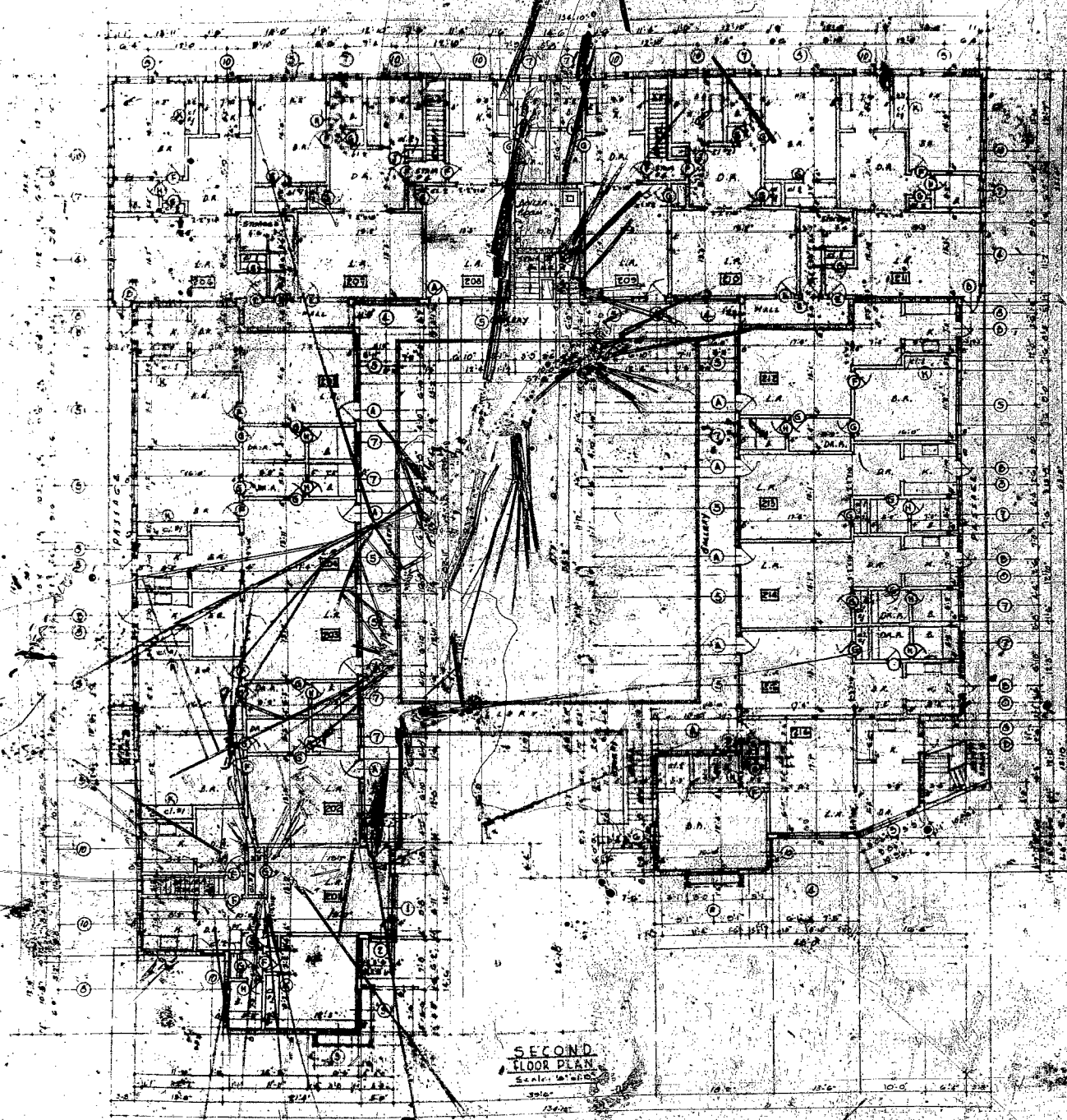


ELEVATION OF NORTH WALL OF PATIO
Scale: 1/4" = 1'-0"

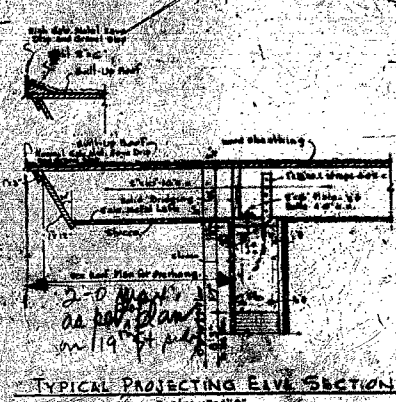
4/11/31
9/18/31

6

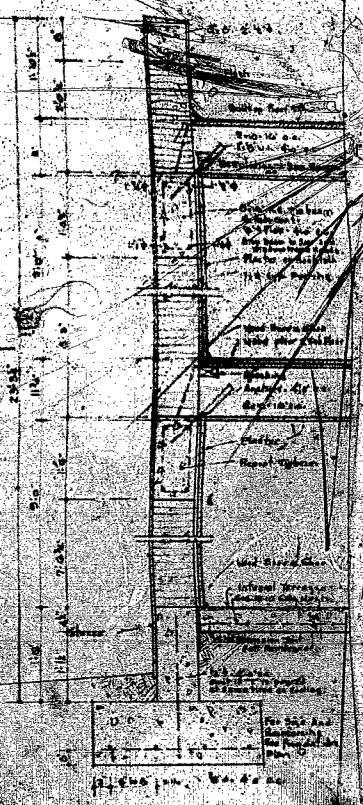
M. KEY AND GIBBS ARCHITECTS
 27 FORTY-FOUR STREET, MIAMI BEACH, FLORIDA
 A 32-UNIT APARTMENT BLDG.
 CHAS. CONSTA, CO.
 322 19th Street, Miami Beach, Florida
 ELEVATIONS
 SHEET NO. 1
 OF 2



SECOND FLOOR PLAN
Scale: 1/8" = 1'-0"

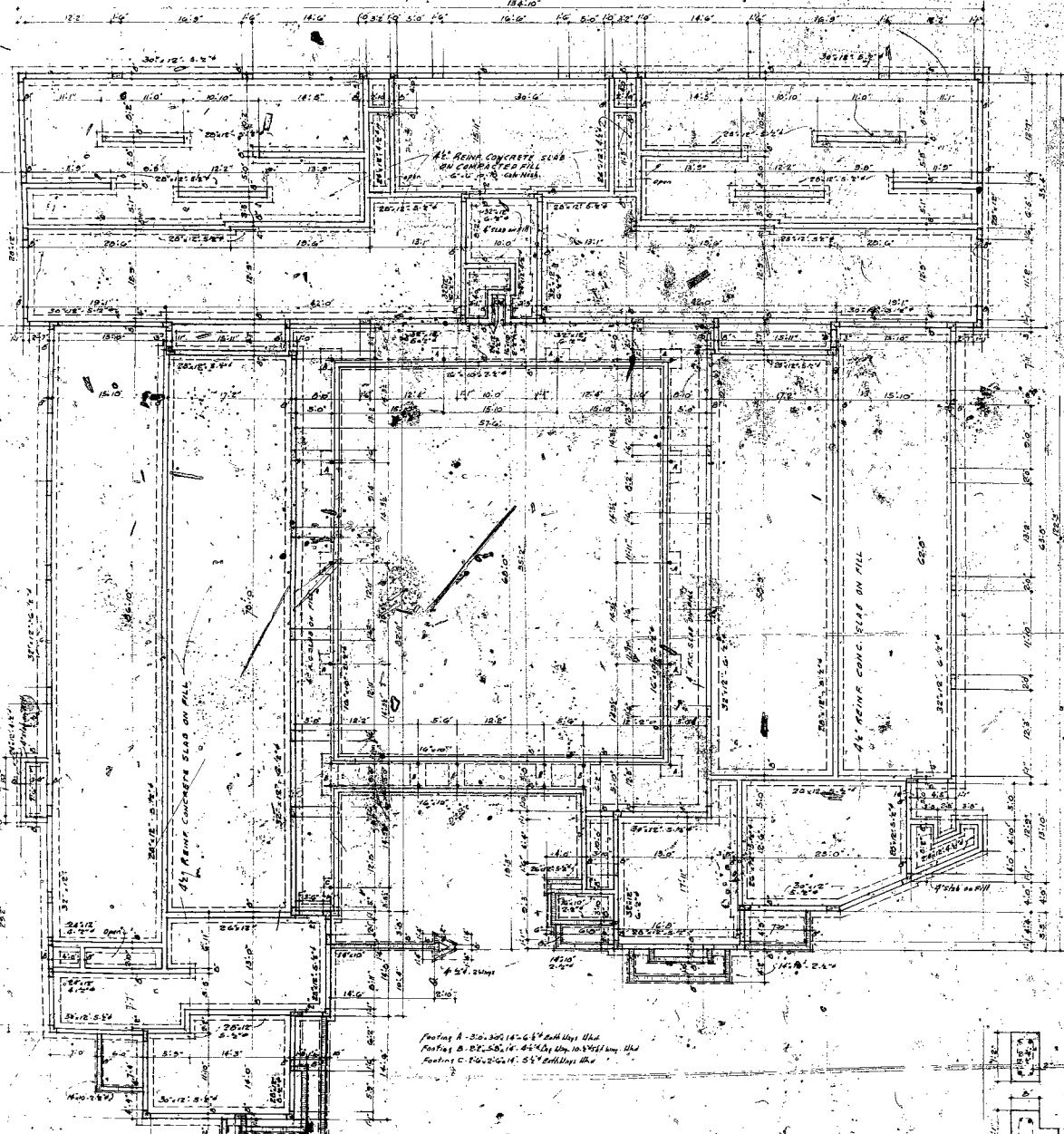


TYPICAL PROJECTING EAVE SECTION
Scale: 1/2" = 1'-0"

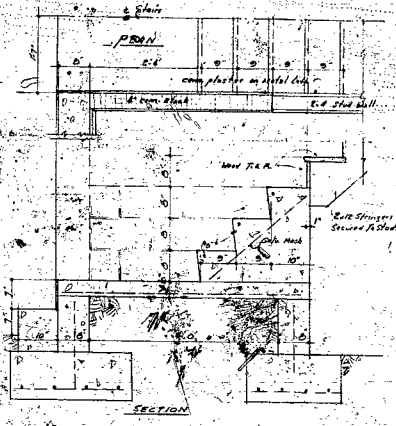


TYPICAL WALL SECTION
Scale: 1/2" = 1'-0"

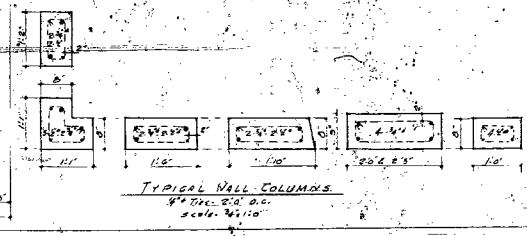
MICKEL AND GIBSON ARCHITECTS
132 UNIT APARTMENT BLDG.
FOR
CHAYES CONSTR. CO.
SEVENTH FLOOR PLAN
DRAWING NO. 2107
SHEET NO. 5



FOUNDATION PLAN
Scale: 1/8" = 1'-0"



DETAIL OF STAIRS 'A' AT 1st FLOOR
Scale: 1/4" = 1'-0"



TYPICAL WALL COLUMN
Scale: 1/4" = 1'-0"

WICKAY AND GIBBS, ARCHITECTS
515 S.W. 1st Street, Miami Beach, Florida
A 32 UNIT APARTMENT BLDG.
FOR
CHAVES CONST. CO.
388 10th Street, Miami Beach, Florida
FOUNDATION PLAN

COMM. NO. 5107
DATE 7/20/1951
SHEET NO. 3