

PROPOSED FOR:
5512 LA GORCE DR.
Miami Beach, Florida

PROJECT No.

REVISIONS

FLOOR PLANS

SCALE: AS SHOWN

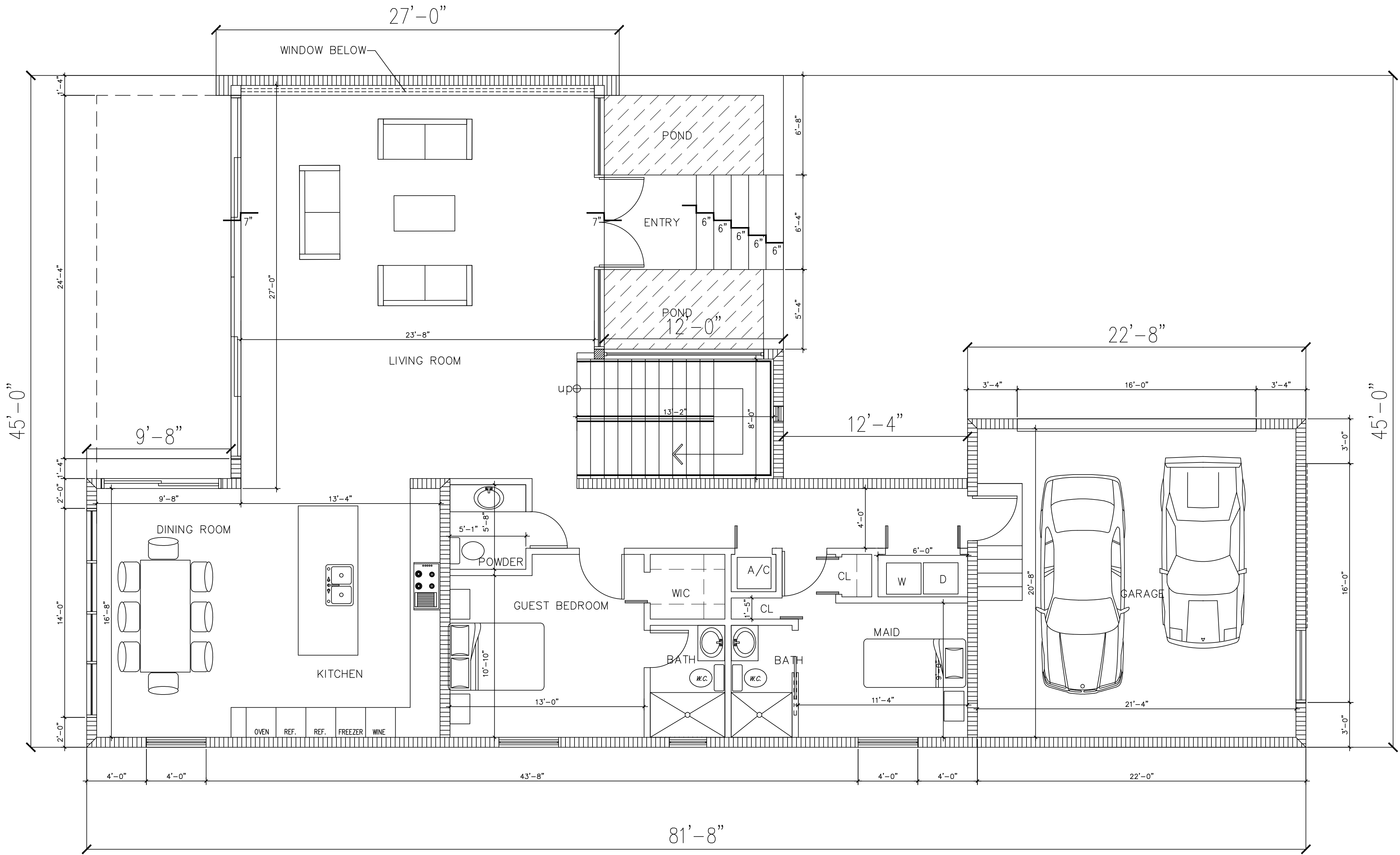
DATE: MAY 20, 2015

A2.0

LEGEND:

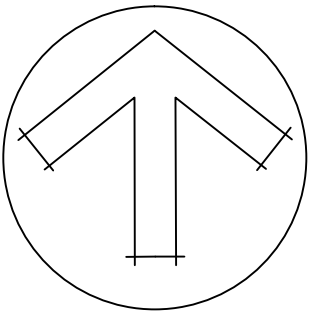
8" CONCRETE BLOCK WALL

4" PARTITION



GROUND FLOOR PLAN

SCALE: 1/4"=1'-0"



PROPOSED FOR:
5512 LA GORCE DR.
Miami Beach, Florida

PROJECT No.

REVISIONS

SECOND FLOOR
PLAN

SCALE: AS SHOWN

DATE: MAY 20, 2015

A2.1

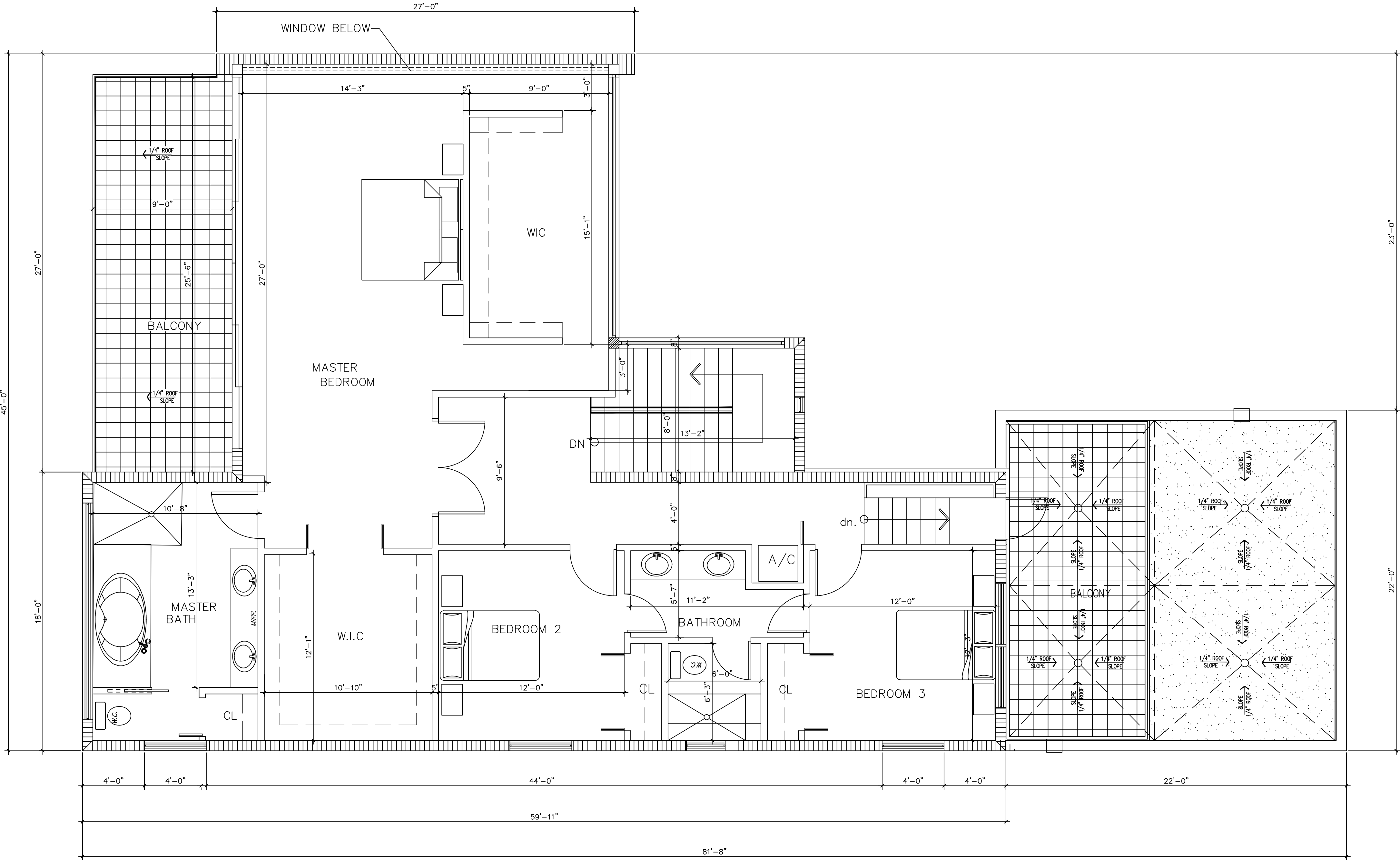
LEGEND:

8" CONCRETE BLOCK WALL

4" PARTITION

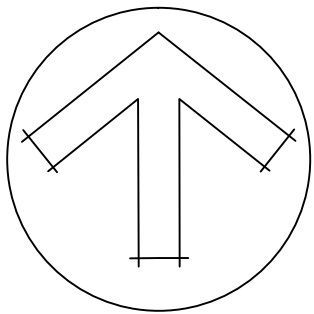
BALCONY

ALUM. CABLE GUARDRAILING SYSTEM



SECOND FLOOR PLAN

SCALE: 1/4"=1'-0"



PROPOSED FOR:
5512 LA GORCE DR.
Miami Beach, Florida

PROJECT No.

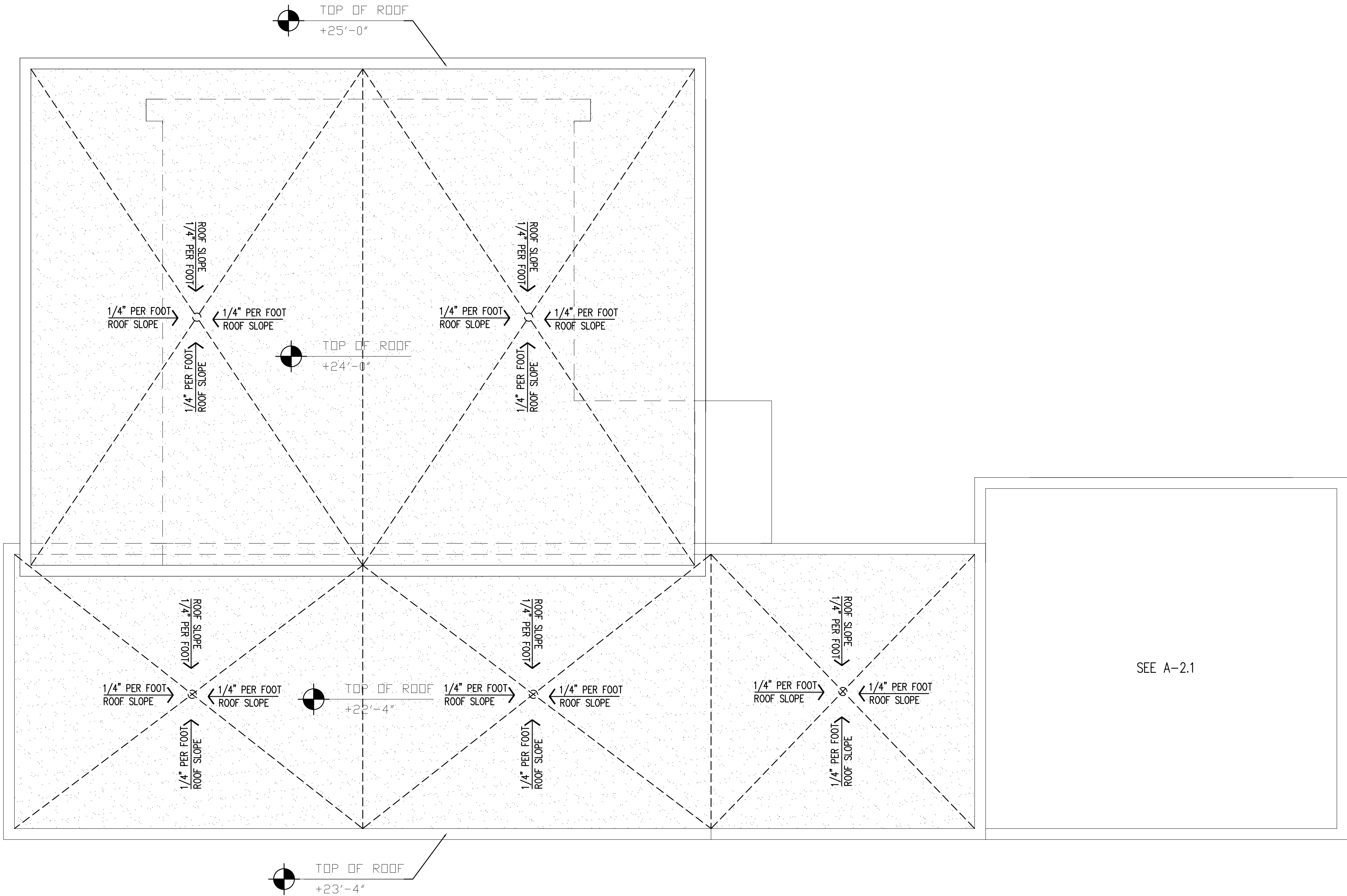
REVISIONS

ROOF PLAN

SCALE: AS SHOWN

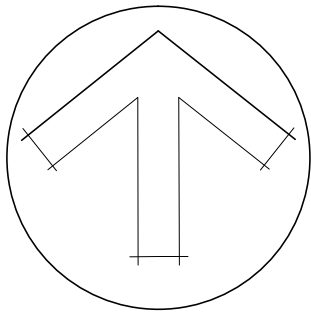
DATE: MAY 20, 2015

A2.2



ROOF PLAN

SCALE: 1/4"=1'-0"



PROPOSED FOR:
5512 LA GORCE DR.
Miami Beach, Florida

PROJECT No.

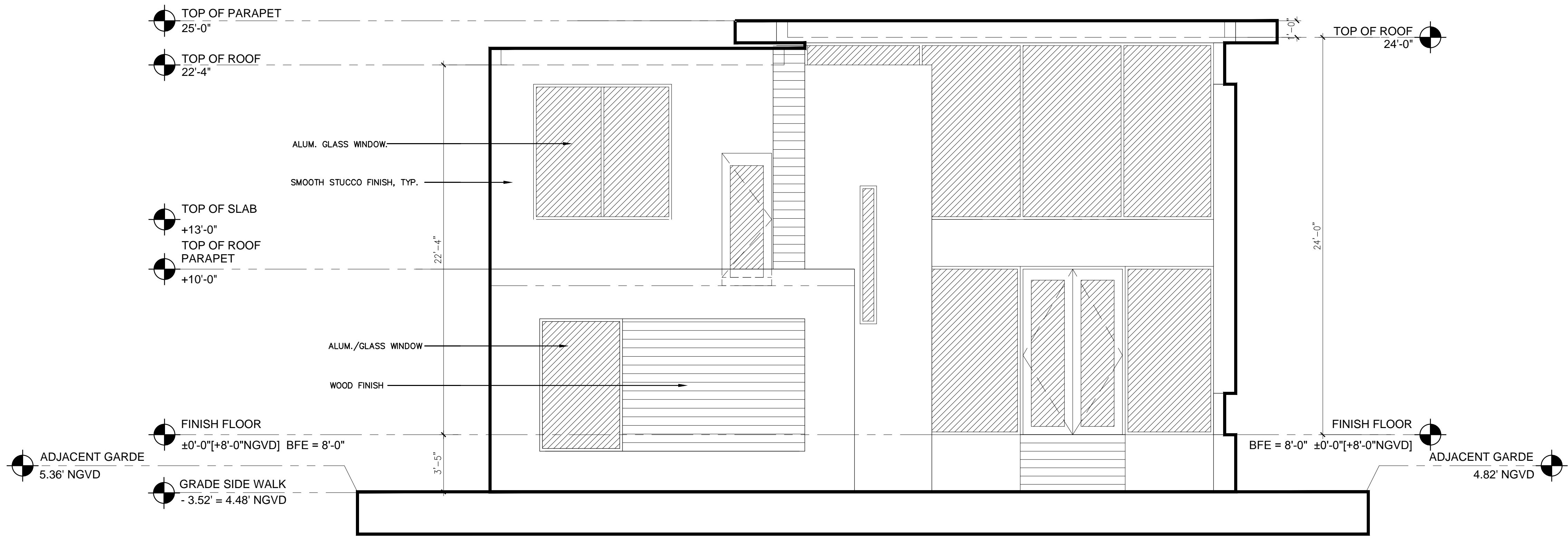
REVISIONS

EXTERIOR
ELEVATIONS

SCALE: AS SHOWN

DATE: MAY 20, 2015

A3.0



FRONT ELEVATION (EAST)

SCALE: 1/4"=1'-0"