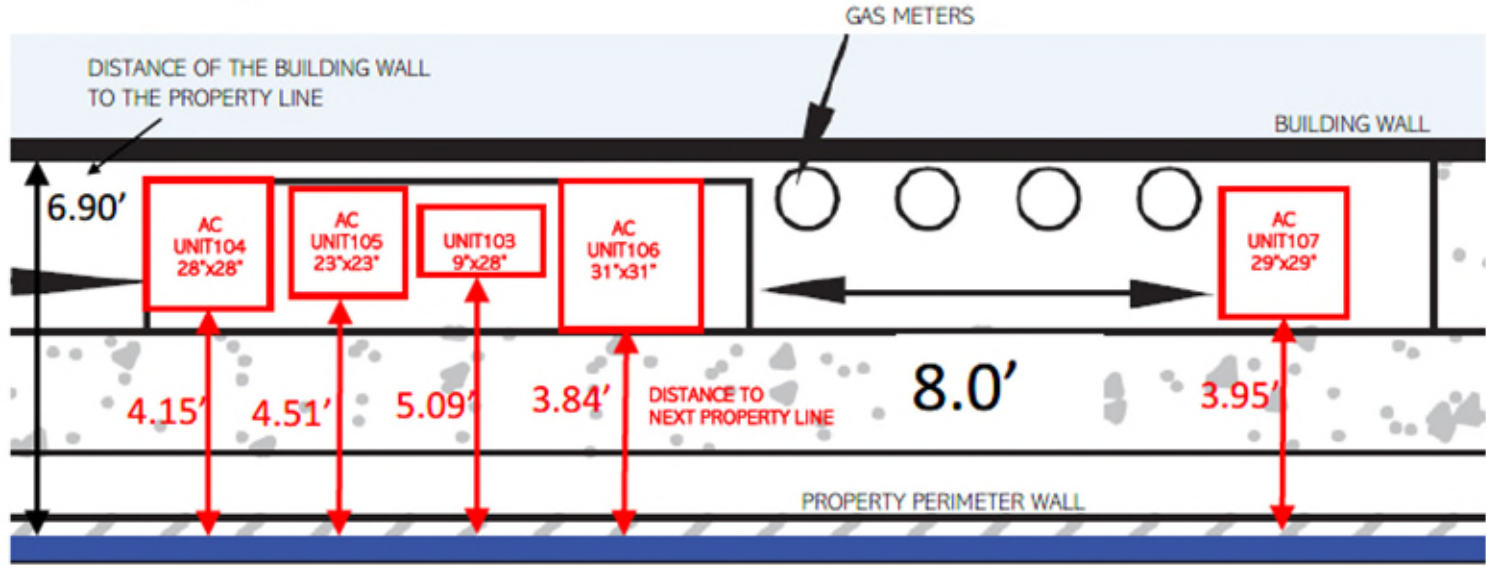
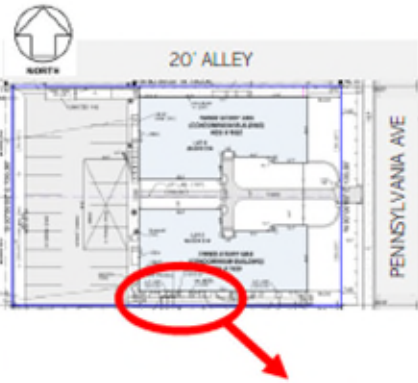




BERCOW
RADELL
FERNANDEZ
LARKIN +
TAPANES

ZONING, LAND USE AND
ENVIRONMENTAL LAW



DATE JUNE-8-12022
REV. 1.0
LESJARDINS ASSOCIATION INC PROPERTY LOCATED 1620 PENNSYLVANIA AVE. MIAMI BEACH, FL. 33139
SHEET DESCRIPTION ZOOM DETAIL AC COMPRESSOR PLAN Units 104,105,103,106,107
PAGE 1



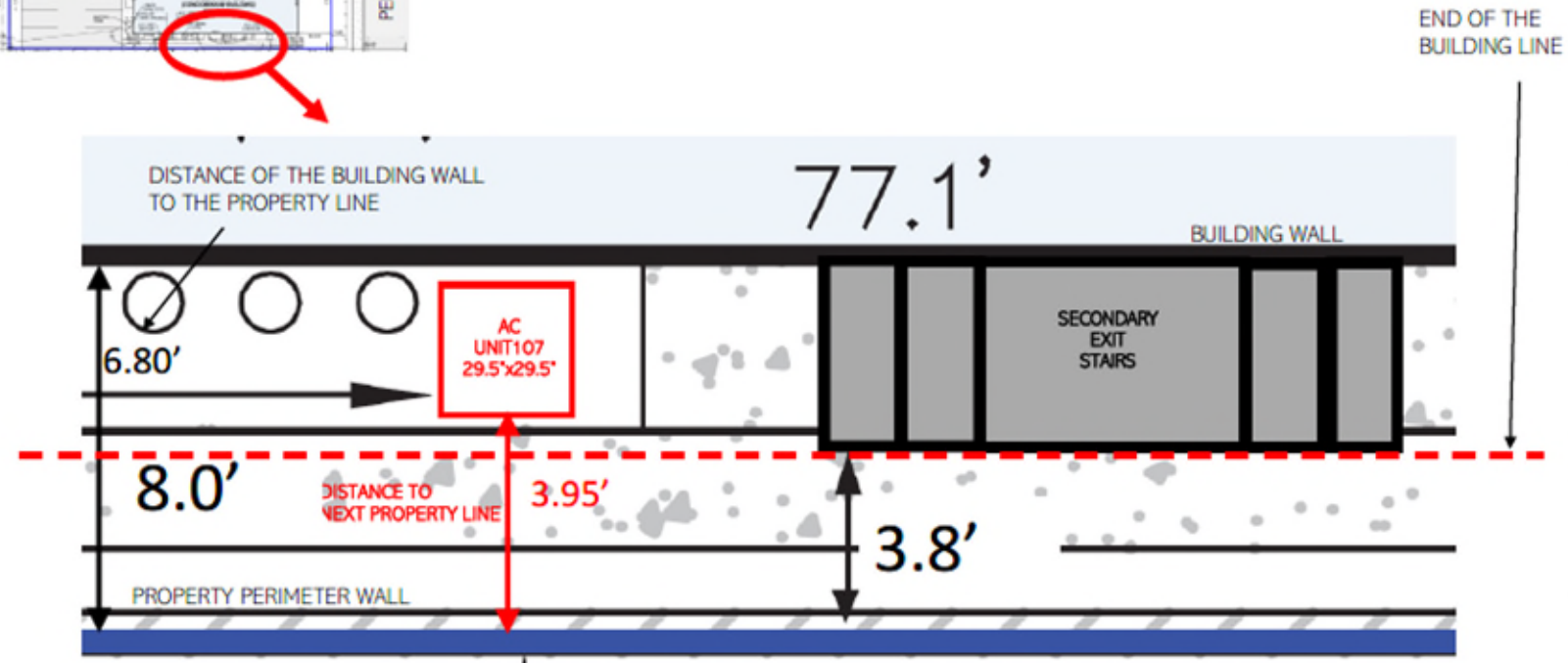
REV. 1.0

LES JARDINS
ASSOCIATION INC
PROPERTY LOCATED
1620 PENNSYLVANIA AVE
MIAMI BEACH, FL 33139

SHEET DESCRIPTION

PICTURE
AC COMPRESSOR
Units
104,105,103,106,107

PAGE 2



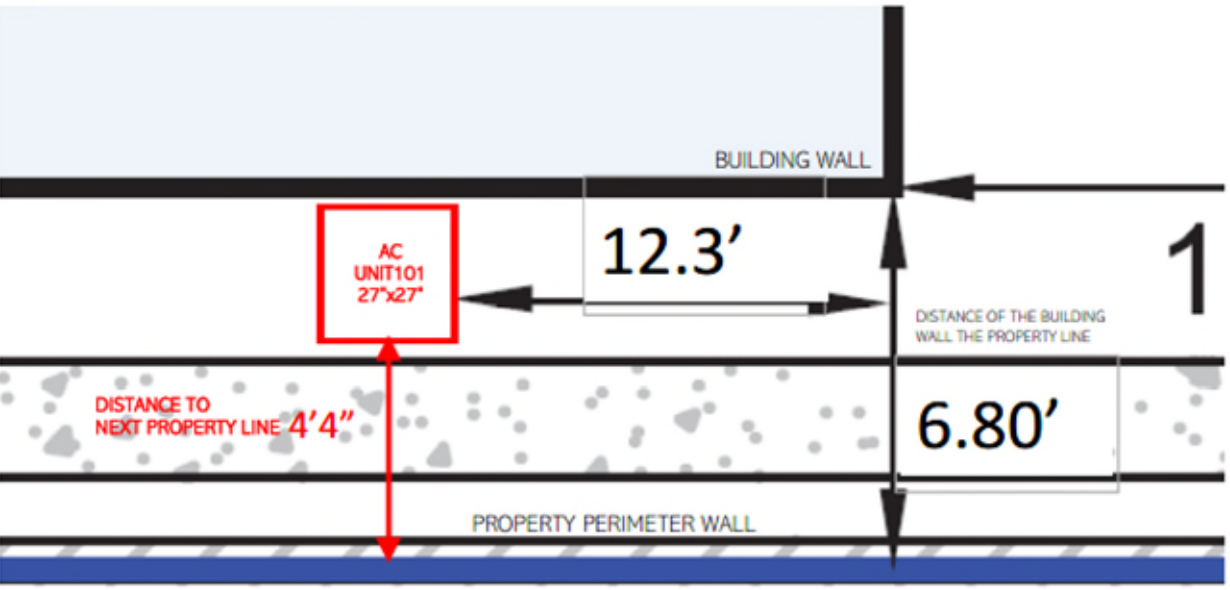
REV. 1.0
LES JARDINS ASSOCIATION INC PROPERTY LOCATED 1620 PENNSYLVANIA AVE. MIAMI BEACH, FL 33139
SHEET DESCRIPTION
ZOOM DETAIL EXIT STAIRS
PAGE 3



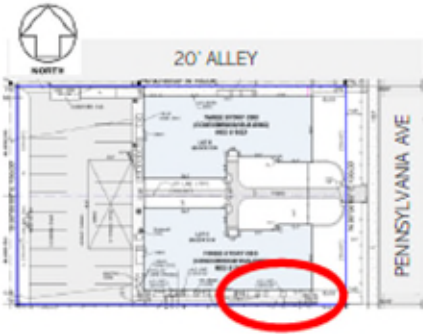
REV. 1.0
LES JARDINS ASSOCIATION INC PROPERTY LOCATED 1620 PENNSYLVANIA AVE. MIAMI BEACH, FL 33139
SHEET DESCRIPTION PICTURE SECONDARY EXIT STAIRS
PAGE 4



20' ALLEY



REV. 1.0
LES JARDINS ASSOCIATION INC PROPERTY LOCATED 1620 PENNSYLVANIA AVE MIAMI BEACH, FL 33139
SHEET DESCRIPTION ZOOM DETAIL AC COMPRESSOR PLAN Units 101 PAGE 5



REV. 1.0
LES JARDINS ASSOCIATION INC PROPERTY LOCATED 1620 PENNSYLVANIA AVE. MIAMI BEACH, FL 33139
SHEET DESCRIPTION PICTURE AC COMPRESSOR Units 101
PAGE 6















BERCOW
RADELL
FERNANDEZ
LARKIN +
TAPANES

ZONING, LAND USE AND
ENVIRONMENTAL LAW