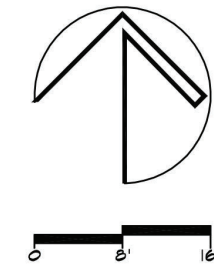




LIST OF DRAWINGS	
SHEET	SHEET NAME
L-1	ILLUSTRATED SITE PLAN
LH-1	HARDSCAPE PLAN
LP-1	PLANTING PLAN
LP-2	PLANTING DETAILS
LP-3	PLANTING DETAILS
EX-1	PLANT MATERIAL
TD-1	TREE DISPOSITION PLAN



663 ALTON CLINIC - LIBRARY
City of Miami Beach, Florida
ILLUSTRATED SITE PLAN

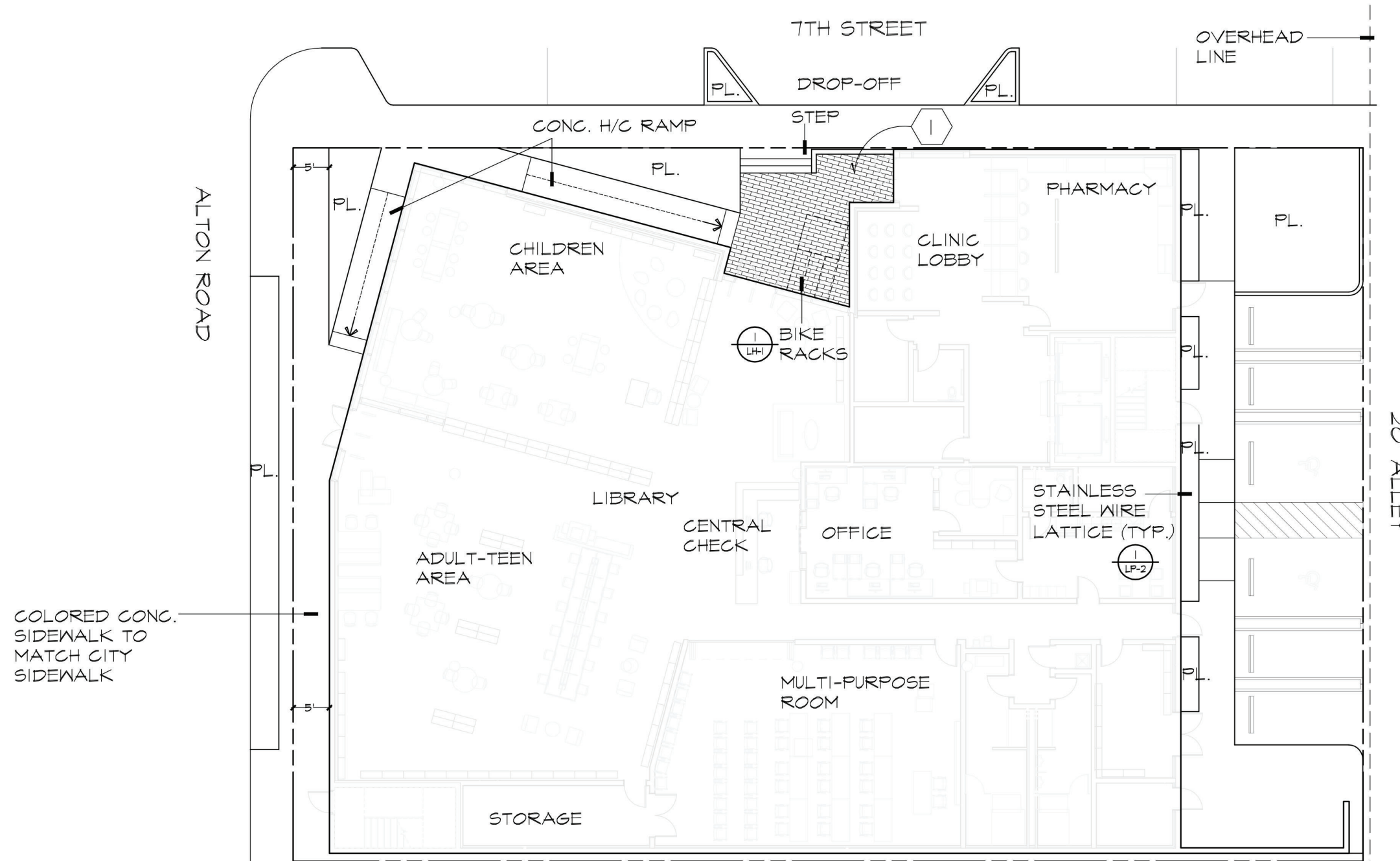
FEBRUARY 6, 2023
DECEMBER 19, 2022
DECEMBER 16, 2022
REVISED

DATE
MF
DRAWN BY

APPROVED BY
EB

This drawing is the property of Landscape Design Workshop, and is an instrument of service not to be reproduced in whole or in part without the express written permission of same.

663 ALTON CLINIC - LIBRARY
City of Miami Beach, Florida
HARDSCAPE PLAN



HARDSCAPE MATERIALS

① SIDEWALK PAVER FIELD: 3"x12"x2³/₈" MODULINE PAVER BY BELGARD OR APPROVED EQUAL; PATTERN: RUNNING BOND (SEE PLAN); COLOR: 1/3 GRANITE (GRAY & WHITE), 1/3 SLATE (CHARCOAL & GRAY), 1/3 CHARCOAL

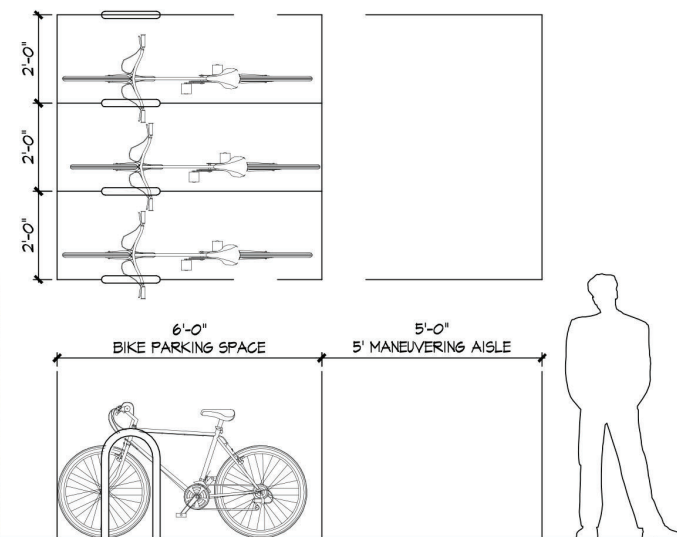
NOTES:
-ALL PAVED SURFACES SHALL MEET ALL ADA REGULATIONS.



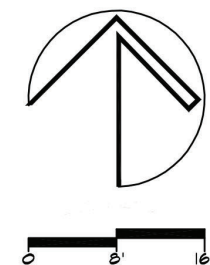
Paving



Bike Rack



① BIKE RACK DETAIL
LH-1 N.T.S.



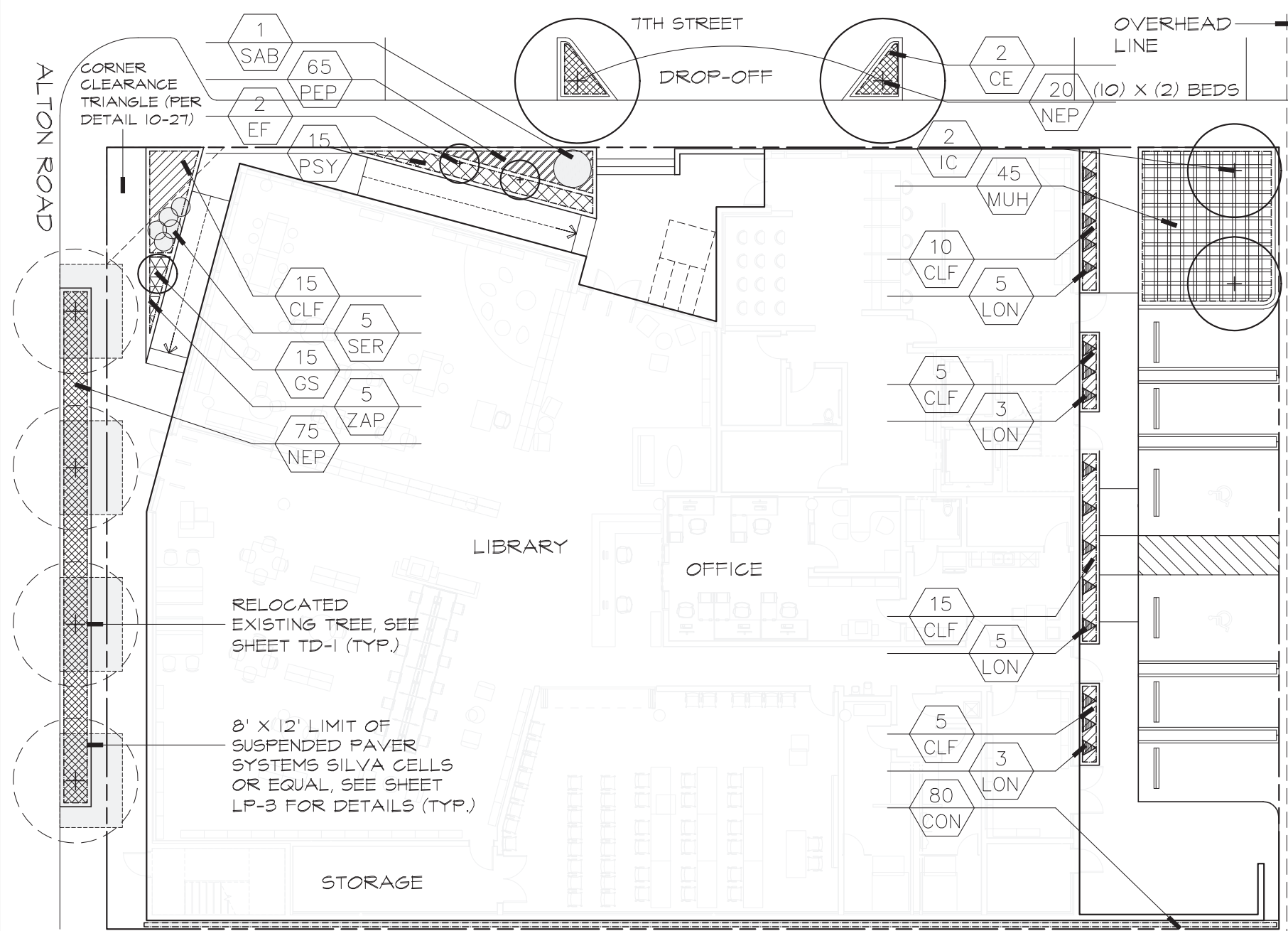
BASE INFORMATION TAKEN FROM BUILT FORM, LLC

COPYRIGHT © 2022 LANDSCAPE DESIGN WORKSHOP. ALL RIGHTS RESERVED

REVISOR
DECEMBER 19, 2022
DATE
DECEMBER 16, 2022
DRAWN BY
MF
CHECKED BY
EB

APPROVED BY
This drawing is the property of Landscape Design Workshop, and is an instrument of service not to be reproduced in whole or in part without the express written permission of same.

LH-1



LANDSCAPE LEGEND

City of Miami Beach

Information required to be permanently affixed to plan

Zoning District: CD-2

Net Lot Area: 0.344 Acres 15,000 Sq. Ft.

OPEN SPACE:

	REQUIRED	PROVIDED
A. Square feet of required Open Space as indicated on site plan: Net lot area = <u> </u> sq. ft. x <u> </u> = <u> </u> sq. ft.	n/a	364
B. Square feet of parking lot open space required as indicated on site plan: Number of parking spaces <u> </u> x 10 sq. ft. per parking space = sq. ft.	n/a	80
C. Total sq. ft. of landscaped open space required: A+B=	n/a	944

LAWN AREA CALCULATIONS:

A. <u> </u> total sq. ft. of landscape open space required		
B. Maximum lawn area (sod) permitted = <u>20%</u> x <u> </u> sq. ft. =	n/a	0

TREES:

A. No. trees required per net lot acre, less existing number of trees meeting min. req. = <u>22</u> trees x <u>0.344</u> net lot acres = 8	8	2 Deficiency = 6
B. % Native required: Number of trees provided x 30% =	3	2
C. % Low maintenance / drought & salt tolerant required: number of trees provided x 50% =	4	2
D. Street trees (max. average spacing of 30' o.c.) <u>250</u> linear feet along street / 20' = 13	13	6 Deficiency = 7
E. Street trees species allowed directly beneath power lines:	n/a	n/a
F. Total trees required: A + D + E = total trees	21	8 Total Deficiency = 13

SHRUBS:

A. Number of shrubs required: sum of lot & street trees required x 12=	252	412
B. % Native shrubs required: Number of shrubs provided x 50% =	126	412

LARGE SHRUBS or SMALL TREES:

A. Number of large shrubs or small trees required: number of required shrubs x 10%=	26	9 Total Deficiency = 17
B. % Native large shrubs or small trees required: number of large shrubs or small trees x 50%=	13	9

Palms & Trees:

Key	Qty.	Water Need	Botanical/Common Name	Height	Spread	Trunk	Remarks
CE*	2	Low	Conocarpus erectus* Green Buttonwood	16'	8'	Min. 4" DBH	Full, standard, Matched
EF*	2	Low	Eugenia foetida* Spanish Stopper	8'	8'		Full, heavy. Multi-Stem
GS*	1	Low	Guaiacum sanctum* Native Lignum Vitae	8'	8'		Full, heavy
IC*	2	Low	Ilex cassine* Dahoon Holly	16'	8'	Min. 4" DBH	Full, standard, Matched

Shrubs & Groundcover:

Key	Qty.	Water Need	Botanical/Common Name	Height	Spread	Remarks	
CLF*	50	Low	Clusia fluminensis* Dwarf Pitch Apple		36"	36"	Full, 36" o.c.; Minimum quality 15 gal. Material
CON*	80	Low	Conocarpus erectus 'Hedge* Green Buttonwood Hedge		36"	36"	Full to the ground, 36" o.c
LON*	16	Low	Lonicera sempervirens* Coral Honeysuckle		4-5' long runners		Trellis grown, attached to wire trellis

MUH*	80	Low	Muhlenbergia capillaris* Muhly Grass	18"	18"		Full, 18" o.c.
NEP*	95	Medium	Nephrolepis exaltata 'Bostoniensis* Boston Fern	24"	24"		Full, 24" o.c.
PEP*	65	Medium	Peperomia obtusifolia* Baby Rubber Plant	12"	12"		Full, 12" o.c
PSY*	15	Medium	Psychotria nervosa* Wild Coffee	30"	30"		Full, 30" o.c.; Minimum quality 7 gal. material
SAB*	1	Low	Sabal minor* Dwarf Palmetto	5'	6'		Full, FL Fancy; Min. quality 45 gal. material
SER*	5	Low	Serenoa repens 'Cinerea* Silver Saw Palmetto	36"	36"		Full, Minimum Quality 15 gal. material
ZAP*	5	Low	Zamia pumila* Coontie	36"	36"		Full, 25 gal material

MISCELLANEOUS
* Indicates Native Plant Material

NOTES:

- Mulch & Soil as per planting specifications
- In case of discrepancies between planting plans and plant list, planting plans take precedent.
- All landscape areas to receive 100% irrigation coverage with 100% overlap
- General contractor responsible for own take off



BASE INFORMATION TAKEN FROM BUILT FORM, LLC

landscape
DESIGN
workshop

• Planning •
Landscape Architecture

One Park Place
421 NW 53rd Street, Suite 125
Boca Raton, Florida 33487
(954) 772-0724

Info@
LandscapeDesignWorkshop.com

663 ALTON CLINIC - LIBRARY
 City of Miami Beach, Florida
PLANTING PLAN

FEBRUARY 6, 2023
DECEMBER 16, 2022

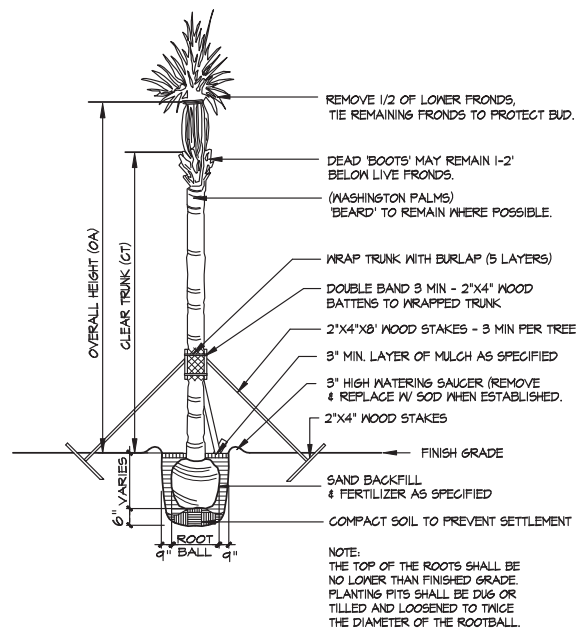
REVISION
DATE
MF
DRAWN BY

APPROVED BY
EP

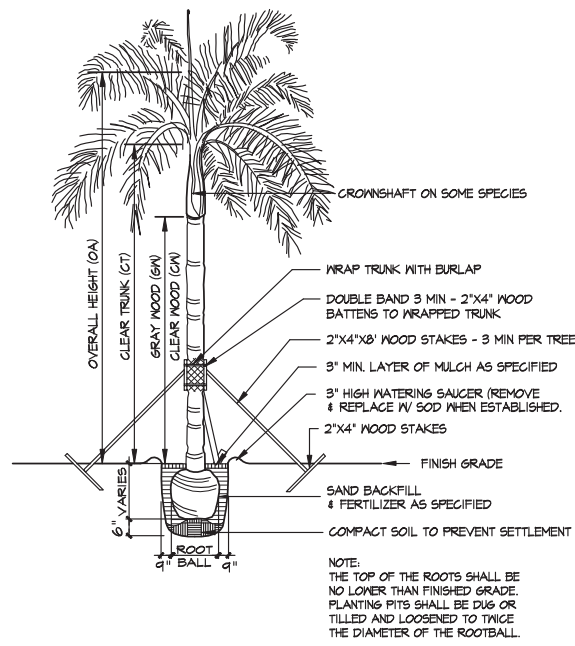
This drawing is the property of Landscape Design Workshop, and is an instrument of service not to be reproduced in whole or in part without the express written permission of owner.

LP-1

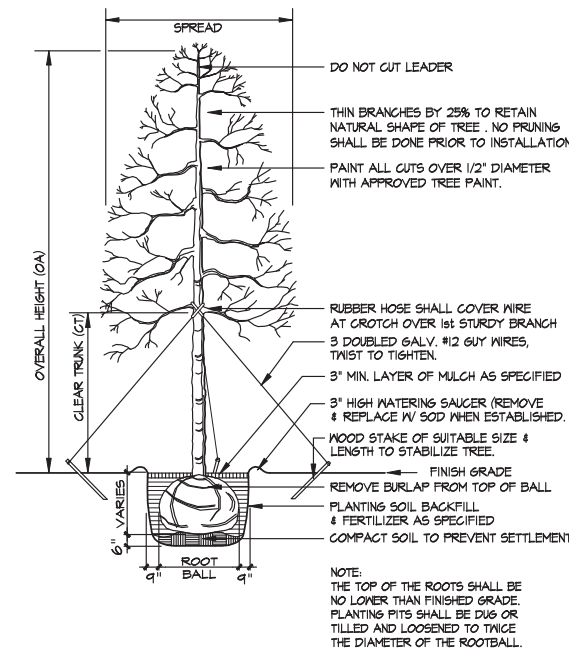
COPYRIGHT © 2023 LANDSCAPE DESIGN WORKSHOP. ALL RIGHTS RESERVED



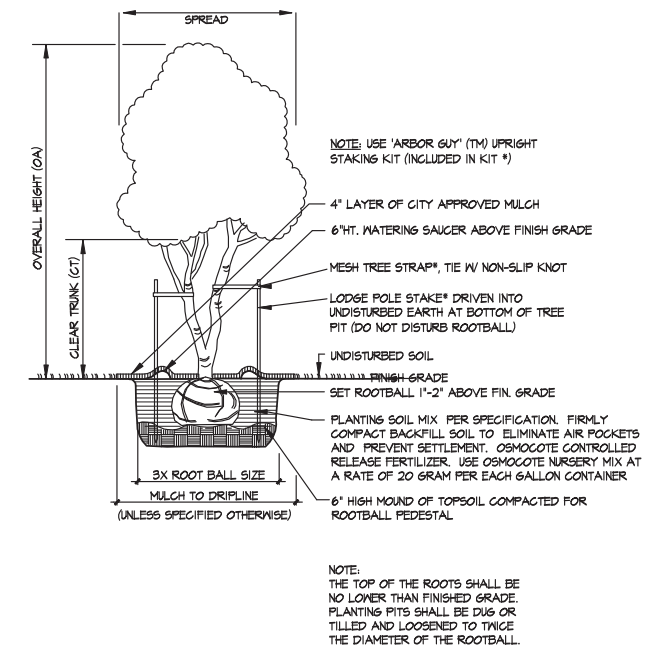
SABAL / WASHINGTON PALM PLANTING DETAIL
N.T.S.



TYPICAL PALM PLANTING DETAIL
N.T.S.



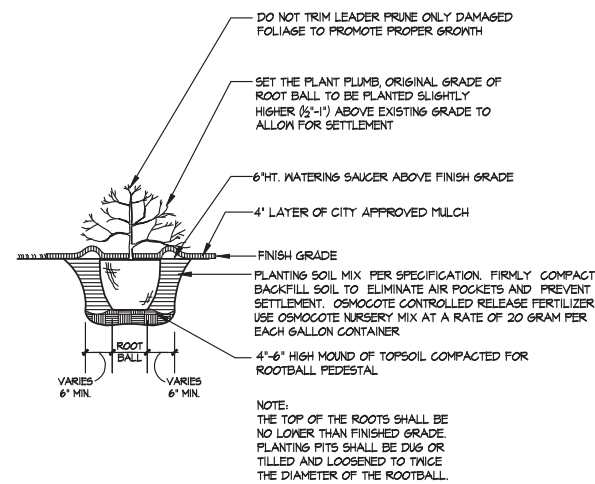
TYPICAL TREE PLANTING DETAIL
N.T.S.



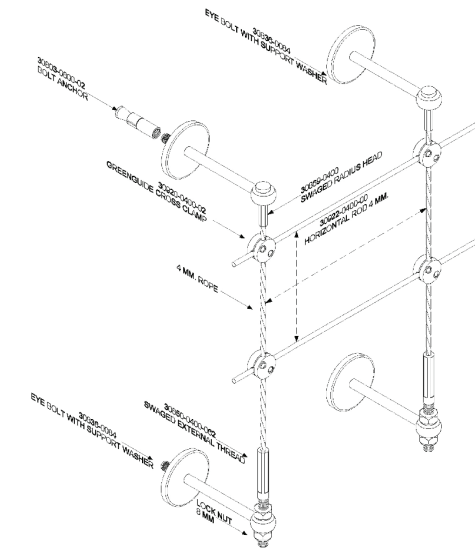
MULTI TRUNK TREE PLANTING DETAIL
N.T.S.

GENERAL NOTES

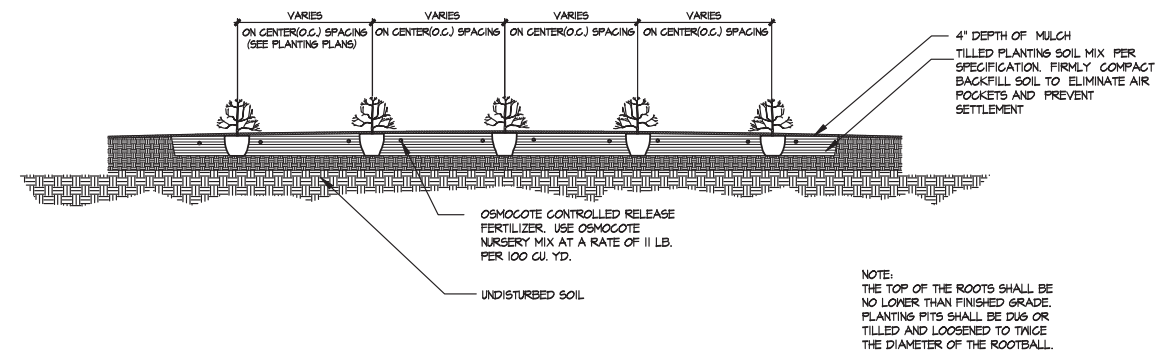
- All plant materials shall conform to the standards for Florida No. 1 or better as given in "Grades and Standards for Nursery Plants", 2nd Edition, February 1998, State of Florida Department of Agriculture, Tallahassee, or thereto.
- All landscape areas to be provided with a 100% automatic irrigation system
- All landscaping and irrigation shall be installed in a sound workmanlike manner and according to accepted and proper planting procedures with the quality of plant materials described.
- Specifications of plant materials as follows: Spread-indicates average spread to midpoint; Height (o.a.)-indicates overall height from top of root ball to midpoint of current season's growth; C.T.-indicates clear trunk measurement to first branching; Ft. of Wood-indicates measurement on palms from top of ball to top of stalks.
- All trees shall be properly guyed and staked at the time of planting to ensure proper establishment.
- Hedges shall be planted and maintained so as to form a continuous, unbroken, solid visual screen.
- Planting soil: the depth of the root ball and twice the diameter of the root ball for palms & trees; 6 inches for shrubs & groundcover.
- Landscaped areas, including landscape islands, within or abutting vehicular use areas shall be excavated to a depth of 2.5 feet to ensure that adequate planting soil exists. Parking lot base course material, lime rock, asphalt and other similar material shall be removed to a depth of 2.5 feet.
- A minimum of three inches of shredded mulch or ground cover shall be installed around each tree planting, including palm trees, and throughout hedge and shrub plantings.
- The contractor is responsible for his own quantity count. Any discrepancy between drawings and plant list shall be considered as correct on the drawings.
- The landscape contractor shall schedule an on-site pre-construction meeting with the City Landscaper



TYPICAL SHRUB / GROUNDCOVER PLANTING DETAIL
N.T.S.



1 STAINLESS STEEL WIRE LATTICE
LP-2 N.T.S.



TYPICAL SMALL SHRUB / GROUNDCOVER PLANTING DETAIL
N.T.S.

BASE INFORMATION TAKEN FROM BUILT FORM, LLC

COPYRIGHT © 2023 LANDSCAPE DESIGN WORKSHOP. ALL RIGHTS RESERVED

landscape
DESIGN
workshop

• Planning •
Landscape Architecture

One Park Place
621 NW 53rd Street, Suite 125
Boca Raton, Florida 33487
(954) 772-0724

Info@
LandscapeDesignWorkshop.com

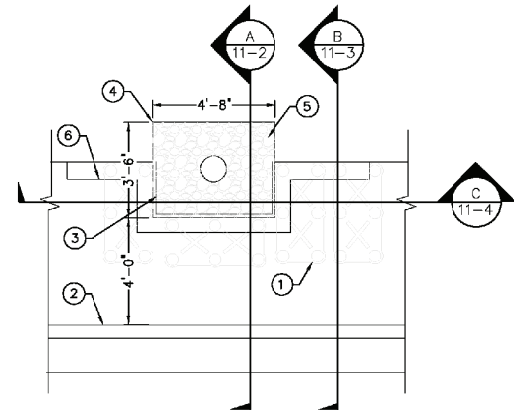
663 ALTON CLINIC - LIBRARY
City of Miami Beach, Florida
PLANTING DETAILS

FEBRUARY 6, 2022
REVISOR
DECEMBER 16, 2022

DATE
MP
DRAWN BY
RB

APPROVED BY
This drawing is the property of Landscape Design Workshop, and is an instrument of service not to be reproduced in whole or in part without the express written permission of same.

LP-2



PLAN VIEW
N.T.S.

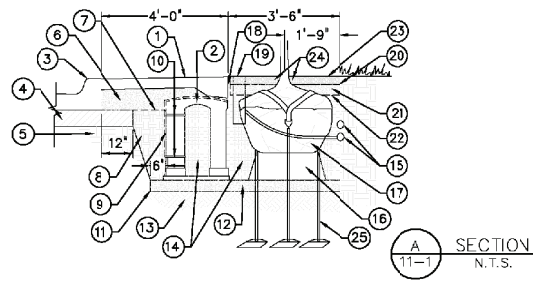
LEGEND:

1. LOAD BEARING MODULAR SUSPENDED PAVEMENT SYSTEM (SILVA CELLS WITH DECK, BASE AND POSTS).
2. CURB.
3. ROOT GUIDE 12" DEPTH, INSTALL ADJACENT CONCRETE EDGE. TOP OF ROOT GUIDE 2" BELOW TOP OF CONCRETE.
4. 6" ALUMINUM EDGE WITH 12" STAKES.
5. ADDAPAVE TREE PIT MIX (6-10MM DIAMETER) BONDED POROUS PAVING 3" DEPTH COMPACTED TO ACHIEVE A LEVEL AND UNIFORM FINISH.
6. CONCRETE SIDEWALK THICKENED EDGE (TURNED DOWN TO SOIL DECK) ONLY WHERE SOIL CELLS ARE PRESENT.

NOTE:

1. CONTRACTOR SHALL INSTALL SOIL CELLS AS PER MANUFACTURER'S WRITTEN SPECIFICATIONS AND INSTALLATION INSTRUCTIONS, IN CONJUNCTION WITH THESE DETAILS AND PLANS.

MIAMI BEACH PUBLIC WORKS DEPARTMENT THE OFFICE OF THE CITY ENGINEER	APPROVED	REVISED	TITLE	DATE
			SUSPENDED PAVEMENT PLAN VIEW	11-1



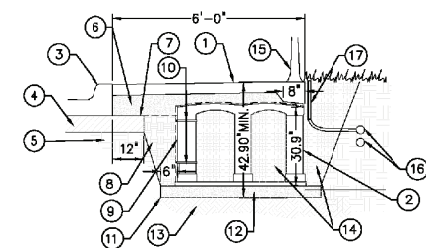
LEGEND:

1. CONCRETE SIDEWALK, TURN DOWN TO SILVA CELL DECK AT EDGE OF WALK.
2. LOAD BEARING MODULAR SUSPENDED PAVEMENT SYSTEM (SILVA CELLS WITH DECK, BASE AND POSTS).
3. CURB.
4. CURB SUB-BASE.
5. ROADWAY COMPACTED SUBGRADE.
6. 4" MIN. AGGREGATE BASE COURSE.
7. GEOTEXTILE TO EDGE OF EXCAVATIONS.
8. BACKFILL, TO WITHIN 4-8" BELOW TOP OF SILVA CELL DECK INSTALL IN 8" LIFTS, EACH COMPACTED TO 95% PROCTOR.
9. GEOGRID TO LINE PERIMETER OF SYSTEM WITH 6" TOE (OUTWARD FROM BASE) AND 12" EXCESS (OVER TOP OF SILVA CELL DECK).
10. 3/16" x 14" ZIP TIES, SECURING GEOGRID TO SILVA CELLS.
11. GEOTEXTILE FABRIC, PLACED BELOW AGGREGATE SUB-BASE.
12. 4" MIN. AGGREGATE SUB-BASE, COMPACTED TO 95% PROCTOR.
13. SUBGRADE BELOW SILVA CELLS, COMPACTED TO 95% PROCTOR.
14. PLANTING SOIL INSTALL IN 12" LIFTS, EACH COMPACTED TO 70-80% PROCTOR.
15. IRRIGATION LATERALS.
16. PLANTING SOIL BELOW TREE ROOT PACKAGE, COMPACTED TO 85-90% PROCTOR.
17. TREE ROOT PACKAGE, SIZE VARIES.
18. ROOT GUIDE 12" DEPTH, INSTALL ADJACENT CONCRETE EDGE. TOP OF ROOT GUIDE 2" BELOW TOP OF CONCRETE.
19. ROOT WATERING SYSTEM.
20. 6" ALUMINUM EDGE WITH 12" STAKES.
21. #57 WASHED AGGREGATE BASE 3" DEPTH, COMPACT TO ACHIEVE A LEVEL AND UNIFORM FINISH.
22. GEOTEXTILE FABRIC SEPARATING AGGREGATE FROM PLANTING SOIL.
23. ADDAPAVE TREE PIT MIX (6-10MM DIAMETER) BONDED POROUS PAVING 3" DEPTH COMPACTED TO ACHIEVE A LEVEL AND UNIFORM FINISH.
24. ADDAPAVE TREE PIT MIX (6-10MM DIAMETER) LOOSE AGGREGATE WEDGE FUNNEL UPWARD TO WITHIN 3/8" TO 5/8" BELOW FINAL FINISHED GRADE.
25. TREE/PALM ROOTBALL STAKING, SEE DETAILS 11-6 AND 11-7.

NOTE:

1. CONTRACTOR SHALL INSTALL SOIL CELLS AS PER MANUFACTURER'S WRITTEN SPECIFICATIONS AND INSTALLATION INSTRUCTIONS, IN CONJUNCTION WITH THESE DETAILS AND PLANS.

MIAMI BEACH PUBLIC WORKS DEPARTMENT THE OFFICE OF THE CITY ENGINEER	APPROVED	REVISED	TITLE	DATE
			SUSPENDED PAVEMENT SECTION A	11-2



SECTION B
N.T.S.

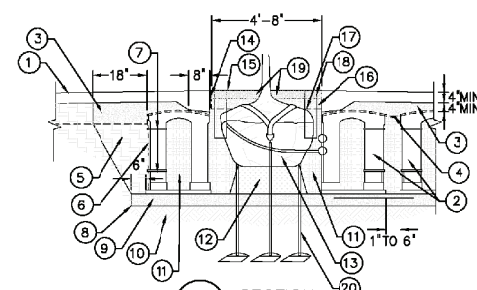
LEGEND:

1. CONCRETE SIDEWALK, TURN DOWN TO SILVA CELL DECK AT EDGE OF WALK.
2. LOAD BEARING MODULAR SUSPENDED PAVEMENT SYSTEM (SILVA CELLS WITH DECK, BASE AND POSTS).
3. CURB.
4. CURB SUB-BASE.
5. ROADWAY COMPACTED SUBGRADE.
6. 4" MIN. AGGREGATE BASE COURSE.
7. GEOTEXTILE TO EDGE OF EXCAVATIONS.
8. BACKFILL, TO WITHIN 4-8" BELOW TOP OF SILVA CELL DECK INSTALL IN 8" LIFTS, EACH COMPACTED TO 95% PROCTOR.
9. GEOGRID TO LINE PERIMETER OF SYSTEM WITH 6" TOE (OUTWARD FROM BASE) AND 12" EXCESS (OVER TOP OF SILVA CELL DECK).
10. 3/16" x 14" ZIP TIES, SECURING GEOGRID TO SILVA CELLS.
11. GEOTEXTILE FABRIC, PLACED BELOW AGGREGATE SUB-BASE.
12. 4" MIN. AGGREGATE SUB-BASE, COMPACTED TO 95% PROCTOR.
13. SUBGRADE BELOW SILVA CELLS, COMPACTED TO 95% PROCTOR.
14. PLANTING SOIL INSTALL IN 12" LIFTS, EACH COMPACTED TO 70-80% PROCTOR.
15. TREE/PALM BEYOND.
16. IRRIGATION LATERALS.
17. IRRIGATION SPRAY.

NOTE:

1. CONTRACTOR SHALL INSTALL SOIL CELLS AS PER MANUFACTURER'S WRITTEN SPECIFICATIONS AND INSTALLATION INSTRUCTIONS, IN CONJUNCTION WITH THESE DETAILS AND PLANS.

MIAMI BEACH PUBLIC WORKS DEPARTMENT THE OFFICE OF THE CITY ENGINEER	APPROVED	REVISED	TITLE	DATE
			SUSPENDED PAVEMENT SECTION B	11-3



LEGEND:

1. CONCRETE SIDEWALK, TURN DOWN TO SILVA CELL DECK AT EDGE OF WALK.
2. LOAD BEARING MODULAR SUSPENDED PAVEMENT SYSTEM (SILVA CELLS WITH DECK, BASE AND POSTS).
3. 4" MIN. AGGREGATE BASE COURSE.
4. GEOTEXTILE TO EDGE OF EXCAVATIONS.
5. BACKFILL, TO WITHIN 4-8" BELOW TOP OF SILVA CELL DECK INSTALL IN 8" LIFTS, EACH COMPACTED TO 95% PROCTOR.
6. GEOGRID TO LINE PERIMETER OF SYSTEM WITH 6" TOE (OUTWARD FROM BASE) AND 12" EXCESS (OVER TOP OF SILVA CELL DECK).
7. 3/16" x 14" ZIP TIES, SECURING GEOGRID TO SILVA CELLS.
8. GEOTEXTILE FABRIC, PLACED BELOW AGGREGATE SUB-BASE.
9. 4" MIN. AGGREGATE SUB-BASE, COMPACTED TO 95% PROCTOR.
10. SUBGRADE BELOW SILVA CELLS, COMPACTED TO 95% PROCTOR.
11. PLANTING SOIL INSTALL IN 12" LIFTS, EACH COMPACTED TO 70-80% PROCTOR.
12. PLANTING SOIL BELOW TREE ROOT PACKAGE, COMPACTED TO 85-90% PROCTOR.
13. TREE ROOT PACKAGE, SIZE VARIES.
14. ROOT GUIDE 12" DEPTH, INSTALL ADJACENT CONCRETE EDGE. TOP OF ROOT GUIDE 2" BELOW TOP OF CONCRETE.
15. ROOT WATERING SYSTEM.
16. #57 WASHED AGGREGATE BASE 3" DEPTH, COMPACT TO ACHIEVE A LEVEL AND UNIFORM FINISH.
17. GEOTEXTILE FABRIC SEPARATING AGGREGATE FROM PLANTING SOIL.
18. ADDAPAVE TREE PIT MIX (6-10MM DIAMETER) BONDED POROUS PAVING 3" DEPTH COMPACTED TO ACHIEVE A LEVEL AND UNIFORM FINISH.
19. ADDAPAVE TREE PIT MIX (6-10MM DIAMETER) LOOSE AGGREGATE WEDGE FUNNEL UPWARD TO WITHIN 3/8" TO 5/8" BELOW FINAL FINISHED GRADE.
20. TREE/PALM ROOTBALL STAKING, SEE DETAILS 11-6 AND 11-7.

NOTE:

1. CONTRACTOR SHALL INSTALL SOIL CELLS AS PER MANUFACTURER'S WRITTEN SPECIFICATIONS AND INSTALLATION INSTRUCTIONS, IN CONJUNCTION WITH THESE DETAILS AND PLANS.

MIAMI BEACH PUBLIC WORKS DEPARTMENT THE OFFICE OF THE CITY ENGINEER	APPROVED	REVISED	TITLE	DATE
			SUSPENDED PAVEMENT SECTION C	11-4

2.03 PLANTING SOIL

- A. It is critical that adequate soil volume be provided to allow trees to grow and mature. Refer to the Miami Beach Urban Forestry Master Plan (June 2020) for soil volume requirements.
- B. Planting shall be natural, friable, and free from rocks larger than 1/2-inch diameter, weeds, stumps, plant tissue, litter, toxic substances, or any other deleterious materials. The planting soil shall consist of 70% clean, sharp, silica sand and 30% Everglades muck, mixed with the native, excavated soil in a 1:1 ratio (50/50). Soil must be taken from ground that has never been stripped, with a slight acid reaction (5.5 to 6.5 parts hydrogen [pH]), and without an excess of calcium or carbonate. Soil shall be delivered in a loose friable condition.
- C. Proof of soil characteristics shall be the Contractor's responsibility and shall be supplied by independent and certified testing laboratories, independently mailed to the City or designee prior to the delivery and/or use of the soil.

2.09 MULCH

- A. Mulch shall be in accordance with City of Miami Beach Code of Ordinances Section 126-6 (j).
- B. Mulch shall be shredded, round-wood, recycled mulch, 'Pine Bark Brown'/dark brown colored mulch.
- C. Planting areas not covered in lawn/sod shall be mulched to a minimum depth of three (3) inches to present a finished appearance.
- D. Cypress mulch, red colored mulch, and rubber mulch is prohibited.
- E. Any other mulch must be submitted to the City of Miami Beach Environment and Sustainability Department for approval prior to delivery.

NOTE: ONE YEAR WARRANTY OF ALL INSTALLED TREES SHALL BE REQUIRED.

landscape
DESIGN
workshop

• Planning •
Landscape Architecture

One Park Place
621 NW 53rd Street, Suite 125
Boca Raton, Florida 33487
(954) 772-0724

Info@
LandscapeDesignWorkshop.com

663 ALTON CLINIC - LIBRARY
City of Miami Beach, Florida
PLANTING DETAILS

REVISED
FEBRUARY 6, 2023
DATE
MP
DRAWN BY
RB

APPROVED BY
This drawing is the property of Landscape Design Workshop, and is an instrument of service not to be reproduced in whole or in part without the express written permission of owner.

LP-3

COPYRIGHT © 2023 LANDSCAPE DESIGN WORKSHOP. ALL RIGHTS RESERVED



Conocarpus erectus
Green Buttonwood



Eugenia foetida
Spanish Stopper



Guaiacum sanctum
Native Lignum Vitae



Ilex cassine
Dahoon Holly



Serenoa repens 'Cinerea'
Silver Saw Palmetto



Clusia fluminensis
Dwarf Pitch Apple



Conocarpus erectus 'Hedge'
Green Buttonwood Hedge



Muhlenbergia capillaris
Muhly Grass



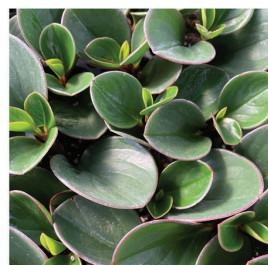
Psychotria nervosa
Wild Coffee



Sabal minor
Dwarf Palmetto



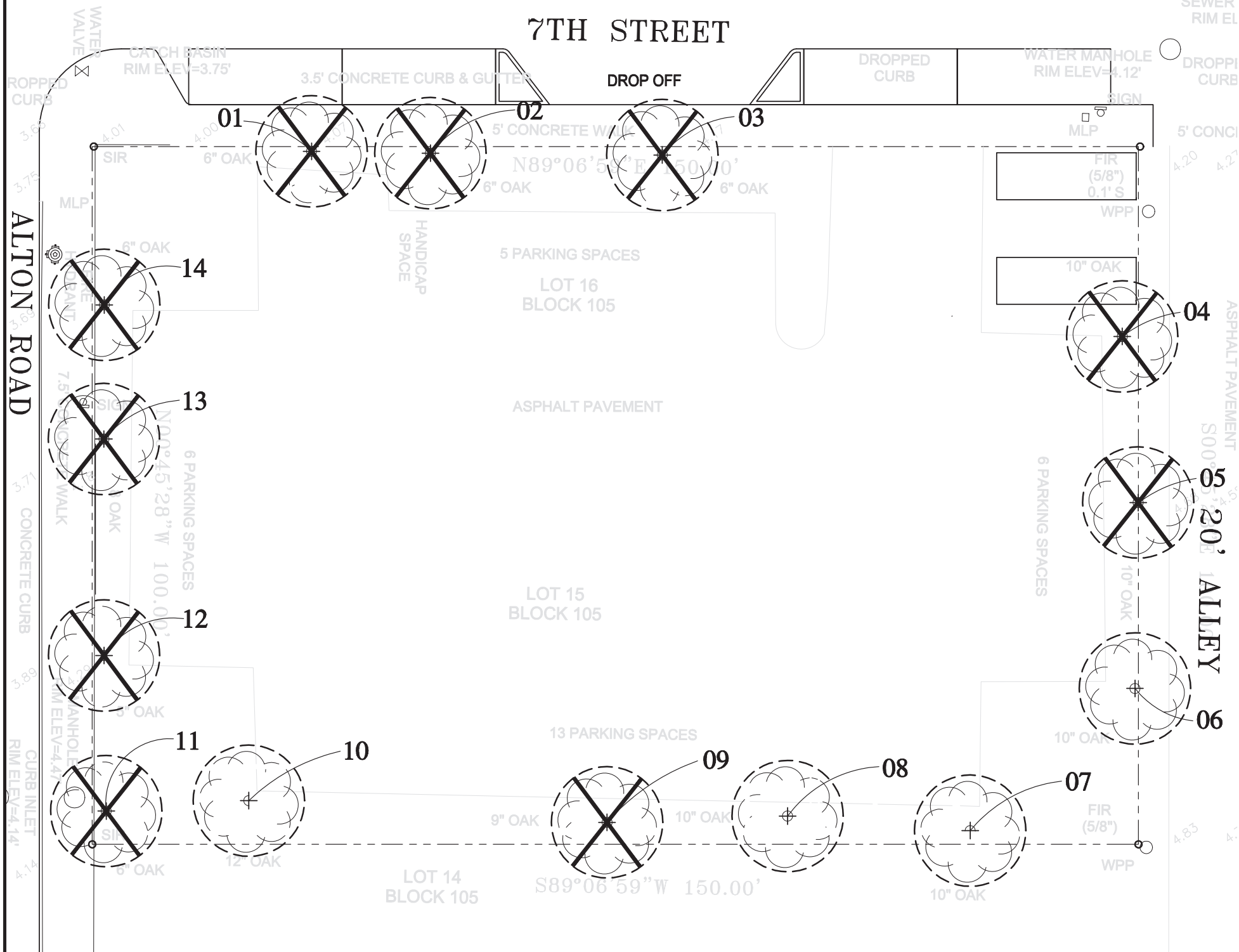
Peperomia obtusifolia
Baby Rubber Plant



Lonicera sempervirens
Coral Honeysuckle



Zamia pumila
Coontie



Tree Disposition List
 633 Alton Road, Miami Beach, Florida
 Note: This vegetation list has been prepared by Landscape Design Workshop based on Survey Plan prepared by BUILT FORM, LLC.

NUMBER	ACTION	TYPE	DBH	SPREAD	HEIGHT	CONDITION%
01	Remove	Quercus virginiana Live Oak	6			
02	Remove	Quercus virginiana Live Oak	6			
03	Remove	Quercus virginiana Live Oak	6			
04	Remove	Quercus virginiana Live Oak	10			
05	Remove	Quercus virginiana Live Oak	10			
06	Relocate	Quercus virginiana Live Oak	10			
07	Relocate	Quercus virginiana Live Oak	10			
08	Relocate	Quercus virginiana Live Oak	10			
09	Remove	Quercus virginiana Live Oak	9			
10	Relocate	Quercus virginiana Live Oak	12			
11	Remove	Quercus virginiana Live Oak	6			
12	Remove	Quercus virginiana Live Oak	5			
13	Remove	Quercus virginiana Live Oak	8			
14	Remove	Quercus virginiana Live Oak	6			

Total tree DBH removed: 72"
 Total tree mitigation required: (24) 12' trees, or (12) 16' trees



BASE INFORMATION TAKEN FROM BUILT FORM, LLC

COPYRIGHT © 2023 LANDSCAPE DESIGN WORKSHOP. ALL RIGHTS RESERVED

landscape DESIGN workshop
 • Planning • Landscape Architecture
 One Park Place
 621 NW 53rd Street, Suite 125
 Boca Raton, Florida 33487
 (954) 772-0724
 info@LandscapeDesignWorkshop.com

663 ALTON CLINIC - LIBRARY
 City of Miami Beach, Florida
 TREE DISPOSITION PLAN

REVISIONS
 FEBRUARY 6, 2023
 DATE
 DECEMBER 16, 2022
 DATE
 MF
 DRAWN BY
 EB
 APPROVED BY

This drawing is the property of Landscape Design Workshop, and is an instrument of service not to be reproduced in whole or in part without the express written permission of same.

TD-1