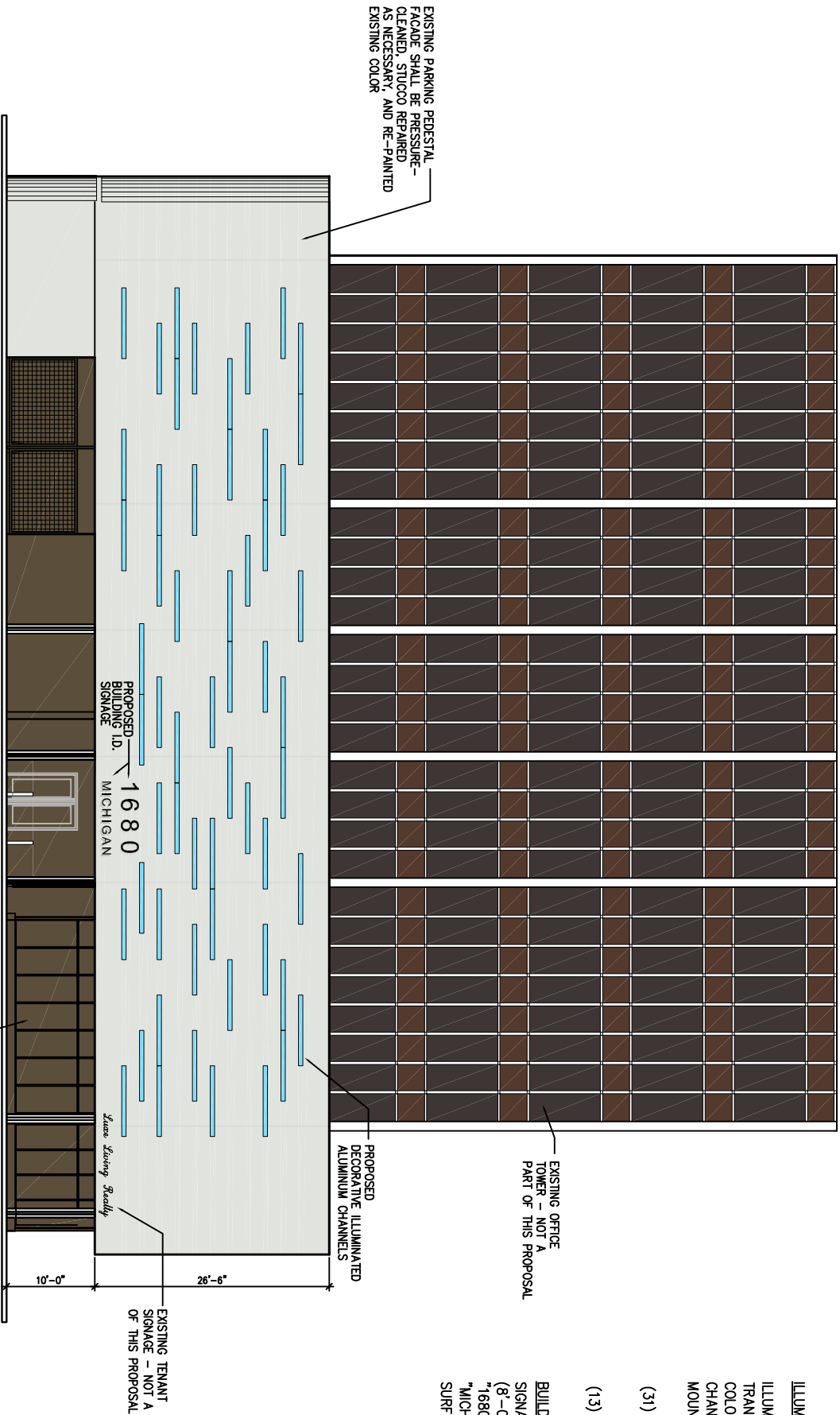


1 EXISTING EAST ELEVATION OF PEDESTAL
SCALE: 1/8" = 1'-0"



ILLUMINATED CHANNEL QUANTITIES:

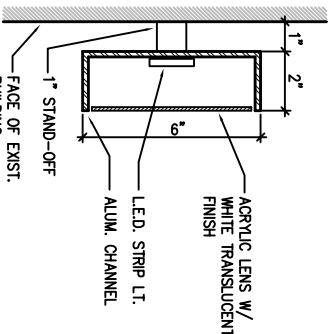
ILLUMINATED CHANNELS SHALL BE FACE-LIT WITH A TRANSLUCENT WHITE ACRYLIC FACING AND AN INTERNAL RGB COLOR-CHANGING LED STRIP LIGHT. CHANNELS SHALL BE POWDER-COATED METALLIC GREY MOUNTED DIRECTLY TO BUILDING FACADE WITH 1" STAND-OFFS

(31) 8' LENGTHS

(13) 16' LENGTHS

BUILDING SIGNAGE NOTES:
SIGNAGE AREA: 30 S.F.
(8'-0"W x 3'-9"H)
"1680" IN 24" TEXT,
"MICHIGAN" IN 12" TEXT
SURFACE MOUNTED, BACK-LIT

3 TYPICAL SECTION THRU ILLUMINATED CHANNEL
SCALE: N.T.S.



2 PROPOSED EAST BUILDING ELEVATION
SCALE: 1/8" = 1'-0"