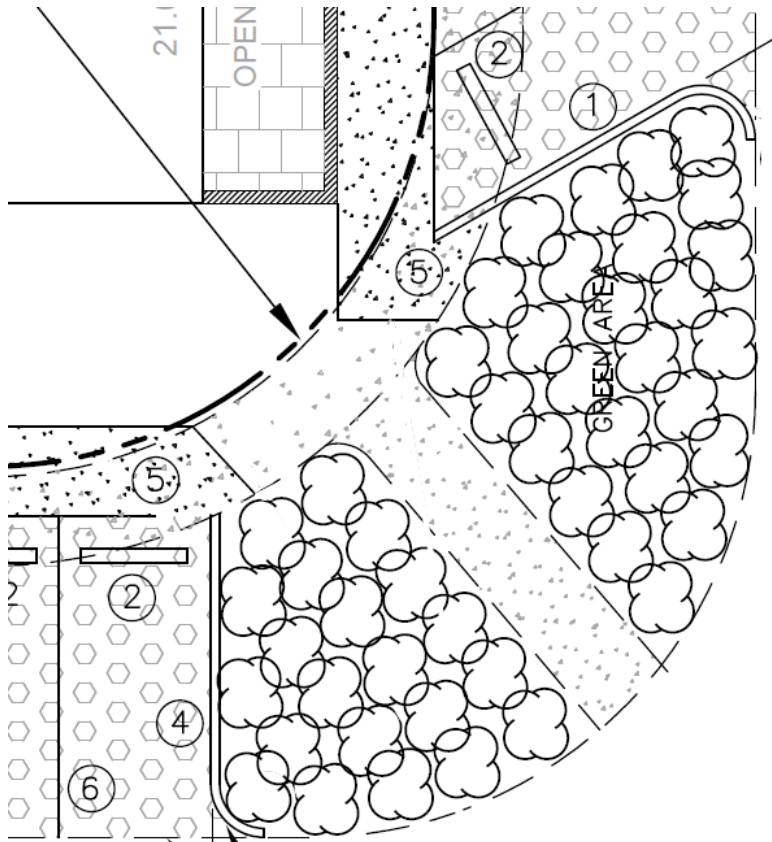


## EXHIBIT C

### Landscape Plan

**Landscape Plan:** The “Green Area” as noted on “C-1 Site Plan” (see Exhibit B) shall include a landscape plan as shown below:



NOT TO SCALE

SHRUBS	CODE	QTY	Container Size	SCIENTIFIC NAME	COMMON NAME	SIZE	Drought Tolerance
	CAGR15	47	#5	Carissa Macrocarpa	Amatungulu	12" Height x 48" Spread	High

**General Notes:**

- All landscape material to be field located.
- All shrubs to be planted at minimum depth of 12”.
- Planting beds to be separate from surrounding areas (i.e. pavement, sidewalk, parking spaces) by 24”.
- Planted areas to have a minimum of 3” flora mulch along base of plants.
- Shrubs shall not exceed the dimension specified at the time of planting.
- Quantities and landscape plan shall be verified prior to commencement of work.
- Shrubs shall not exceed the dimension specified at the time of planting.
- Shrubs shall be maintained such ensure a clear stopping site triangle.

**Legal Description:**

LOT 13, BLOCK 15, NAUTILUS ADDITION OF MIAMI BAY SHORE COMPANY, ACCORDING TO THE PLAT THEREOF AS RECORDED IN PLAT 8 AT PAGE 130, OF THE PUBLIC RECORDS OF MIAMI-DADE COUNTY, FLORIDA.