

# LANDSCAPE LEGEND

ZONING DISTRICT:	RS-3	LOT AREA	0.34 Acres	14,895 s.f.	
				REQUIRED	PROVIDED
<b>LAWN AREA CALCULATION</b>					
A. Square feet of open space required: 50% of Lot Area =				2,553	6,252
B. Maximum lawn area (sod) permitted	50 %	x	6,252 s.f.	3,126	1,136
<b>TREES</b>					
A. Number of trees required, less existing number of trees (12' high / 2" cal min) meeting minimum requirements =					
	14 trees	-	0 existing=	14	41
B. % Native trees required: Number of required trees x 30% =				4	5
C. % Drought tolerant and low maintenance: Number of required trees x 50% =				7	37
D. Street Trees (maximum average spacing of 20' o.c.):					
	66.1 linear feet along street /	20	=	3	4
E. Street trees located directly beneath power lines: (maximum average spacing of 20' o.c.):					
	66 linear feet along street /	20	=	3	4
F. Tree Diversity (based on number of required trees)				4	7
G. Trees in Energy Conservation Zone				2	4
<b>SHRUBS</b>					
A. Number of shrubs required (18" min height): (No. of required trees + No. of street trees) x 10 =				170	298
B. % Native shrubs required: Number of required shrubs x 50% =				85	226
C. % large shrubs required (min 6' high installed, 10' high once mature, 50% min native) Number of required shrubs x 10%=				17	39



5712 NORTH BAY ROAD  
MIAMI BEACH, FL 33139

SHEET INDEX	
L000	Cover Sheet
L100	Tree Disposition Plan
L200	Planting Plan
L300	Lighting Plan

TREE TABULATIONS				
CATEGORY	# PROVIDED	CANOPY CREDIT (EA.)	CANOPY CREDIT	TREE NAME(S)
CAT. 1 TREES EXTRA LARGE	1	450	450	Clusia rosea
CAT. 1 TREES	3	300	900	Clusia rosea, (2) Magnolia grandiflora
CAT. 2 TREES	26	150	3900	(26) Ilex attenuata
CAT. 3 TREES	9	100	900	Krugiodendron ferreum, (8) Lagerstroemia indica
CAT. 4 PALMS	3	50	150	(3) Cocos nucifera
TOTAL			6,300	


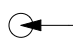
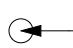
TREE DIVERSITY CHART

REQUIRED # OF TREES	REQUIRED MINIMUM # OF SPECIES
01-20	2
21-50	4
51 or greater	6

NOTES

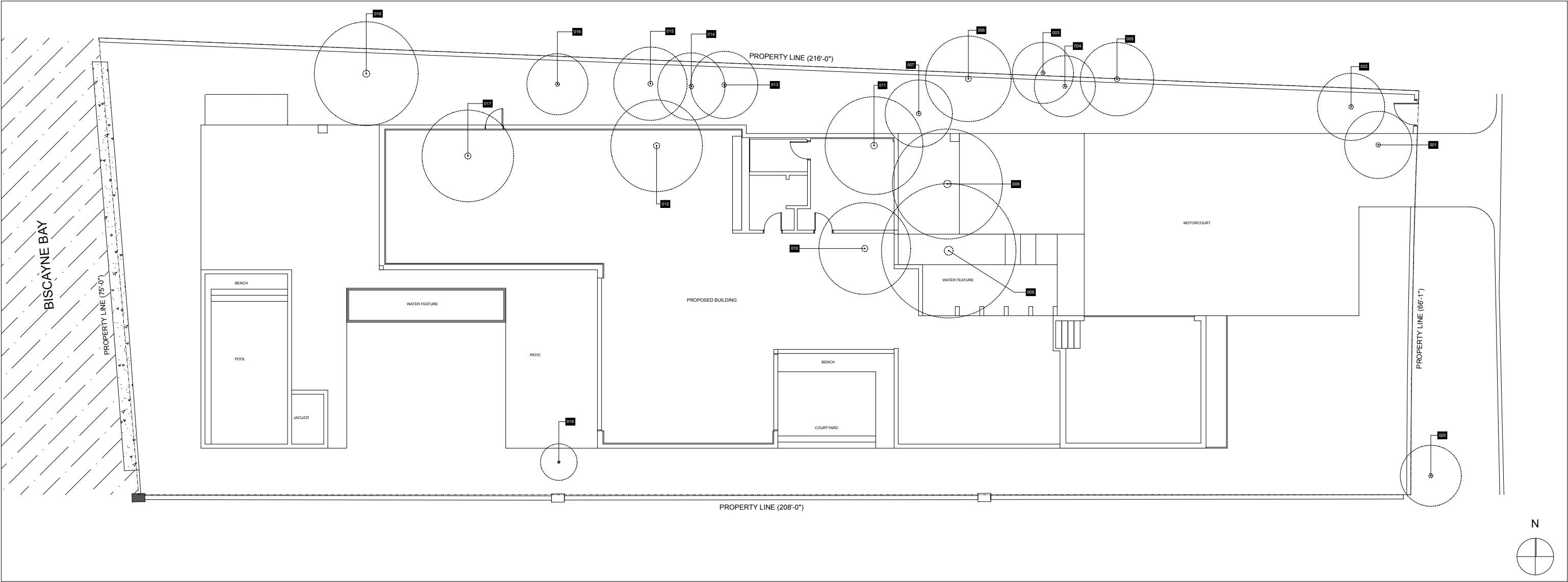
REFER TO ARBORIST REPORT FOR ADDITIONAL INFORMATION.

KEY LEGEND

-  **000** EXISTING TREE TO REMAIN
-  **000** EXISTING TREE TO RELOCATE
-  **000** EXISTING TREE TO REMOVE

EXISTING TREE SCHEDULE AND DISPOSITION

TREE #	COMMON NAME	BOTANICAL NAME	HEIGHT (FT)	WIDTH (FT)	CLEAR TRUNK (FT)	DBH (INCH)	HEALTH CONDITION (%)	REMAIN	RELOCATE	REMOVE	CANOPY AREA (SQ FT)	COMMENTS
1	Chinese Fan Palm	<i>Livistona chinensis</i>	28	12	12	8+8	80			*	113.04	Double
2	Chinese Fan Palm	<i>Livistona chinensis</i>	30	12	14	8+7	85			*	113.04	Double
3	Royal Palm	<i>Roystonea regia</i>	50	15	40	18	75			*	176.63	
4	Royal Palm	<i>Roystonea regia</i>	16	15	8	10	75			*	176.63	
5	Royal Palm	<i>Roystonea regia</i>	50	12	40	16	70			*	113.04	
6	Chinese Fan Palm	<i>Livistona chinensis</i>	24	15	12	7+7	80			*	176.63	Double
7	Chinese Fan Palm	<i>Livistona chinensis</i>	28	12	14	9	80			*	113.04	
8	Coconut Palm	<i>Cocos nucifera</i>	36	20	22	12	85			*	314.00	
9	Mango	<i>Mangifera indica</i>	20	25		12	50			*	490.63	
10	Royal Palm	<i>Roystonea regia</i>	60	18	50	26	70			*	254.34	
11	Chinese Fan Palm	<i>Livistona chinensis</i>	26	20	14	85				*	314.00	Double
12	Royal Palm	<i>Roystonea regia</i>	65	18	55	22	70			*	254.34	
13	Royal Palm	<i>Roystonea regia</i>	40	14	26	20	80			*	153.86	
14	Royal Palm	<i>Roystonea regia</i>	45	14	27	26	80			*	153.86	
15	Royal Palm	<i>Roystonea regia</i>	50	16	30	24	80			*	200.96	
16	Royal Palm	<i>Roystonea regia</i>	45	14	25	26	75			*	153.86	
17	Royal Palm	<i>Roystonea regia</i>	45	20	25	22	85			*	314.00	
18	Royal Palm	<i>Roystonea regia</i>	32	20	20	20	80			*	314.00	
19	Alexander Palm	<i>Ptychosperma elegans</i>	24	6	18	3	70			*	452.16	
20	Wild Tamarind	<i>Lysiloma latisiliquum</i>	16	12		8	55			*	113.04	
TOTAL CANOPY AREA:											4465.10	

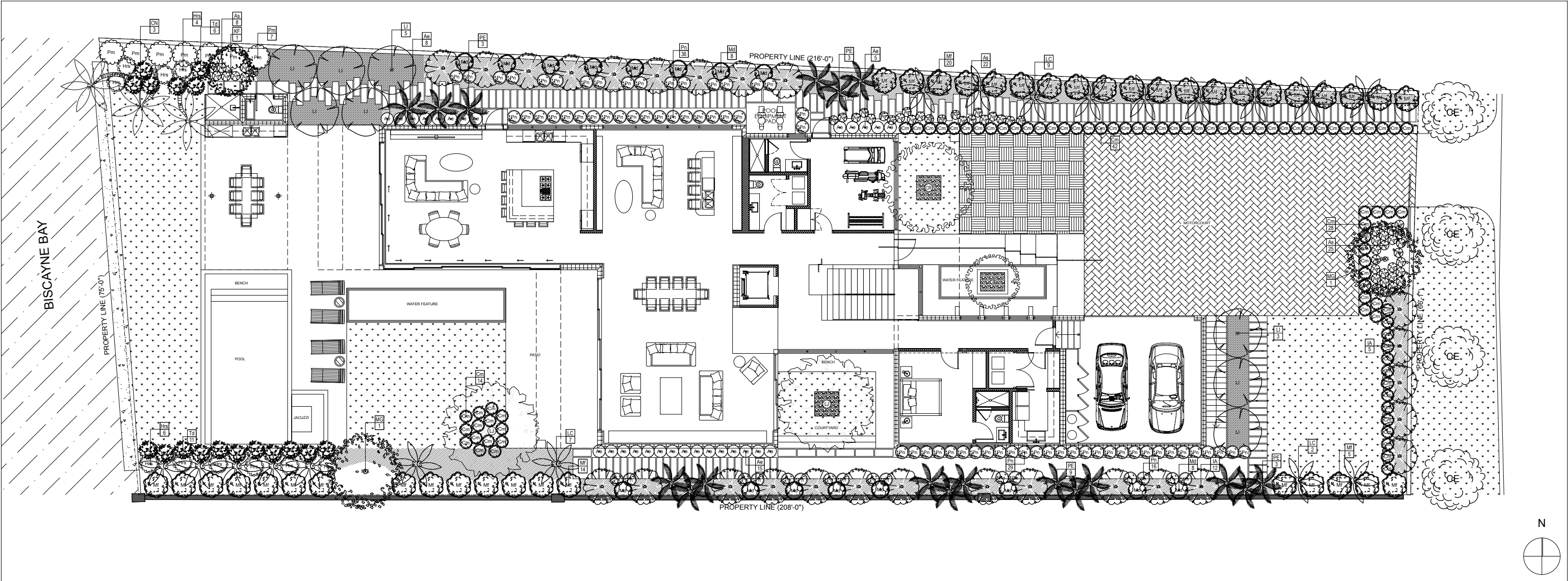


PROPOSED TREES								
Sym.	Abb.	Qty	Botannical Name	Common Name	Cal.	Height	Spread	Remarks
	CE	4	Conocarpus erectus 'Sericeus'	Silver Buttonwood	3"	12-14'	10'	Matching, 4' CT
	CR	1	Clusia rosea	Pitch Apple	12"	15'	9'	Collected Specimen w character
	CR	1	Clusia rosea	Pitch Apple	18"	20'	15'	Collected Specimen w character
	IA	26	Ilex attenuata 'East Palatka'	Holly	3" min	14'	6'	3' Clear Trunk
	KF	1	Krugiodendron ferreum	Black Ironwood	4"	16'	8'	Standard with character
	LI	8	Lagerstroemia indica	Crape Myrtle	3"	14'	6-8'	Multi-stem
	LJ	2	Ligustrum japonicum	Japanese Privet	18"	20'-22'	16'	Collected Specimen with high multi-trunk
	MG	2	Magnolia grandiflora	Magnolia	5"	20'	12-14'	Standard w 1' CT

PROPOSED PALMS								
Sym.	Abb.	Qty	Botannical Name	Common Name	Cal.	Height	Spread	Remarks
	CN	3	Cocos nucifera 'Maypan'	Coconut Palm		18-25' WD	12'	Curved trunk, staggered heights
	LC	18	Livistona chinensis	Chinese Fan Palm	9"	12' GW	8'	Relocated
	PE	18	Ptychosperma elegans	Solitaire Palm		22' OA		

PROPOSED SHRUBS & ACCENTS											
Sym.	Abb.	Qty	Botannical Name	Common Name	Size	Height	Spread	Spacing/Remarks	Native	Drought Tolerance	
	Ae	28	Ardisia escallonioides	Marlberry	7 gal	4'	24"	2' o.c.	Y		
	As	55	Agapanthus	Same	3 gal						
	Cm	84	Carissa macrocarpa	Natal Plum	7 gal				Y	Y	
	Hrs	10	Hibiscus rosa sinensis	Hibiscus	7 gal	24"	24"	24" o.c.			
	Md	16	Monstera deliciosa	Swiss Cheese Vine	---	15 gal		---	Y	Y	
	Mf	39	Myrcianthes fragrans	Simpson Stopper	30 gal	7-8'		(Large Shrub per Code)	Y	Y	
	Pm	7	Podocarpus macrophyllus	Podocarpus	100 gal	9-10' Columns, FTB				Y	
	Pn	81	Psychotria nervosa	Wild Coffee	7 gal	24"	24"	24" o.c.	Y	Y	
	Td	17	Tripsacum dactyloides	Fakahatchee Grass	---	7 gal		---	Y	Y	

PROPOSED GROUNDCOVERS AND VINES											
Sym.	Abbr.	Qty	Botanical Name	Common Name	Size	Height	Spread	Spacing	Area (SF)	Remarks	Native
	lm		Liriope muscari 'Evergreen Giant'	---	---	---	---	---	273.79	---	---
	mp		Black Mexican Pebbles	---	---	---	---	---	44.00	---	---
	pbm		Philodendron 'Burle Marx'	---	---	---	---	---	1,095.99	---	---





MODEL: WL    LARGE WELL LIGHT SERIES

**APPLICATION:**  
\* Lin Enlit, Shadowing, Well Wash, Silhouette, Architectural Accents

**CONSTRUCTION:**

- 6061 Aluminum – Clear Anodized (SSA Model)
- High Performance C360 Solid Brass (BR Model)
- Tempered Mineral Glass Protective Lens

\* Greater than 60,000 hours (greater than 20 years at 8 hours per day)

\* Internal Driver constructed with advanced electronics

- 10.5 to 18 Volts AC or DC (20 -50 Watt equivalent models)
- 12 to 18 Volts AC or DC (75 Watt equivalent model)

**INSTALLATION AND HARDWARE:**  
• PVC Wall Light Sleeve Included

**LEAD WIRES:**  
• ULECC 18 AWG Tinned Copper Wire  
• 40 Inch Length

**ELECTRONICS WARRANTY:**  
• 30 Years





**POWER CONSUMPTION/AVAILABLE MODEL:**  
 \* See Power Consumption (Model Available) Table below.

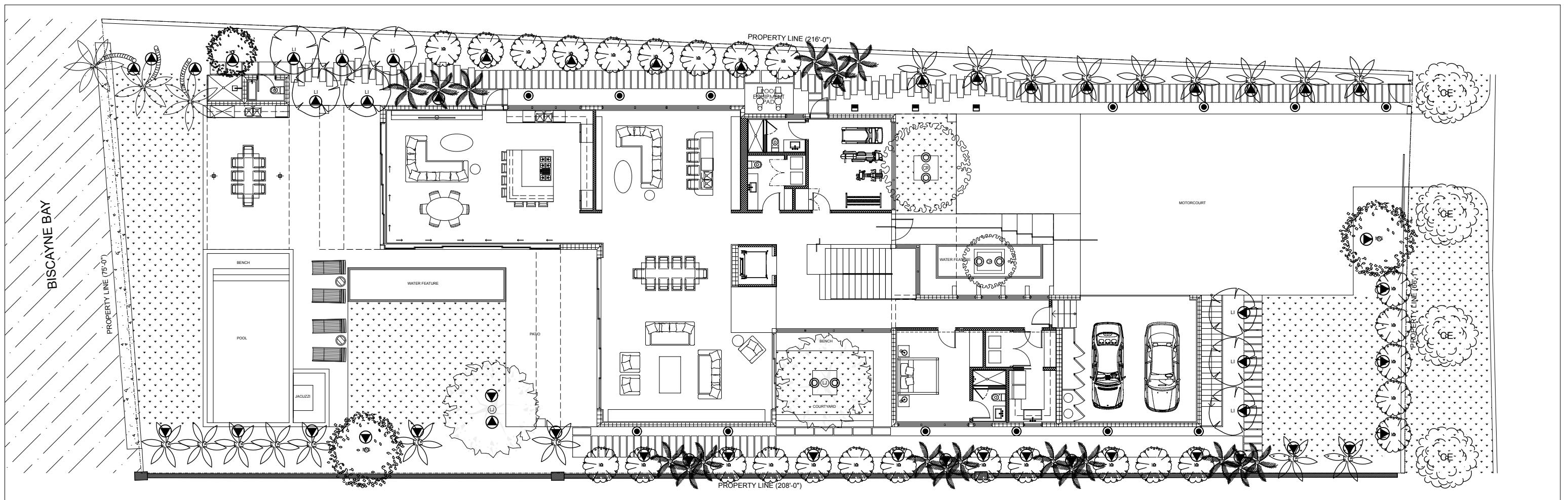
**AVAILABLE FINISHES:**  
 • Stainless Aluminum (SSA) • C906 Gold Brass (GB)

Model #	Wattage	Optics	Finish	Light Output
WL	20	1 (R 12")	BR	(Blank) 3000K Warm White
	35	2 (R 20")	SSA	2700K 3000K Warm White
	50	4 (R 20")		2700K 3000K Neutral White
	75	6 (R 20")		Amber
			BLU	Blue
			RLS	Royal Blue
			GRN	Green
			RED	Red



## LIGHTING FIXTURE SCHEDULE

Sym	Qty	Light Fixture	Manufacturer/Model	Wattage	Lamp	Color	Optics	Voltage	Finish
	3	MINI WALL WASHER	Garden Light LED/MWW	2.8 Watt	LED 2700K	Warm White	Flood (F)	12V	Architectural Bronze (AB)
	6	WELL LIGHT	Garden Light LED/P10	2.8 Watt	LED 2700K	Warm White	-	12V	Architectural Bronze (AB)
	13	PATH LIGHT	Garden Light LED/WL	4.9 Watt	LED 2700K	Warm White	40° (4)	12V	C360 Solid Brass (BR)
	53	UP LIGHT	Garden Light LED/V2	3.7 Watt	LED 2700K	Warm White	40° (4)	12V	C360 Solid Brass (BR)


$$1/16'' = 1'-0''$$