

1/2 DETAIL - KITCHEN CABINET

1/2 DETAIL - MAIN COOLING UNIT

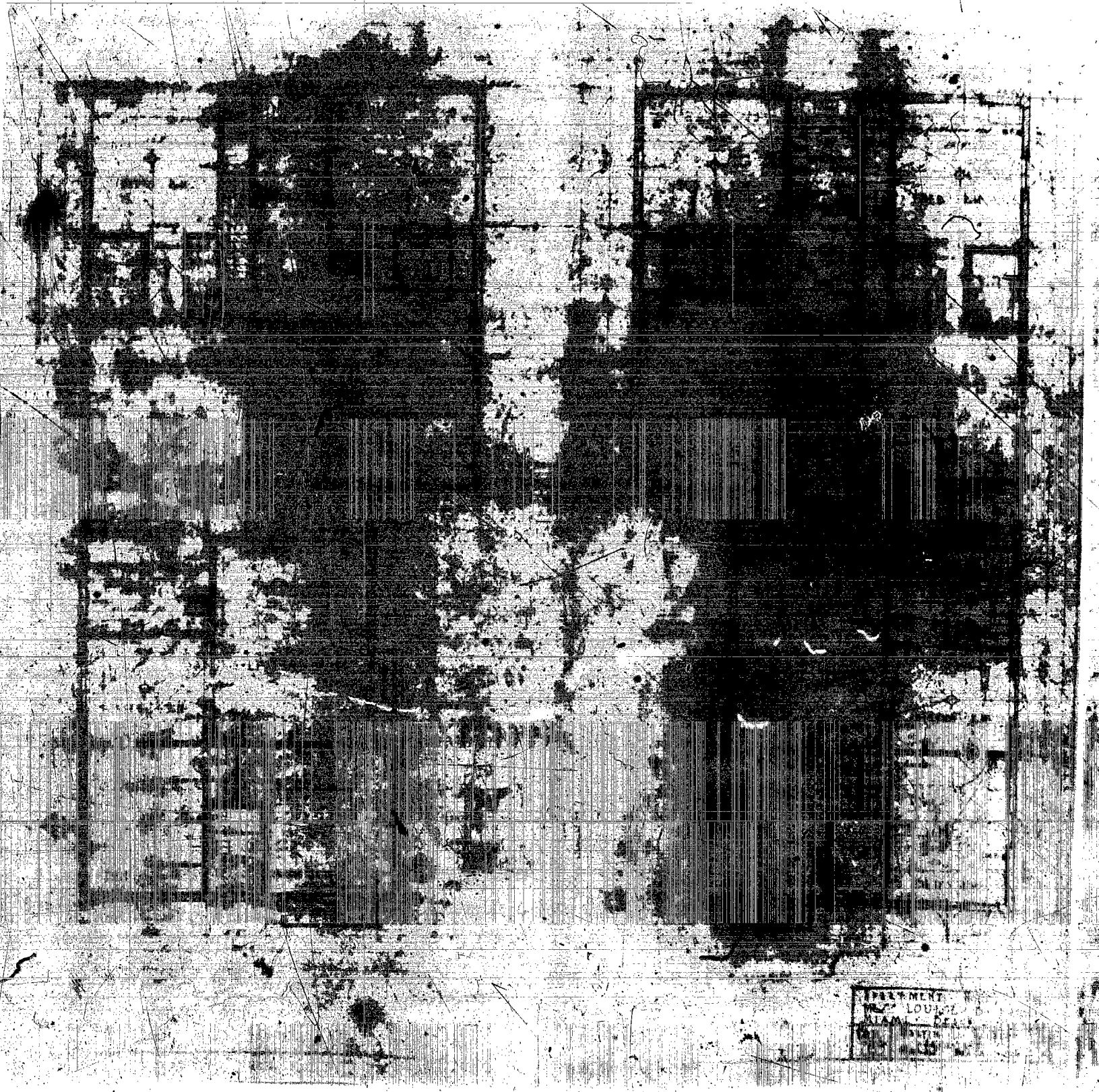
6240-1

LYMENT, LOUIS  
LOUIS P.  
DEAC  
MAY 1952

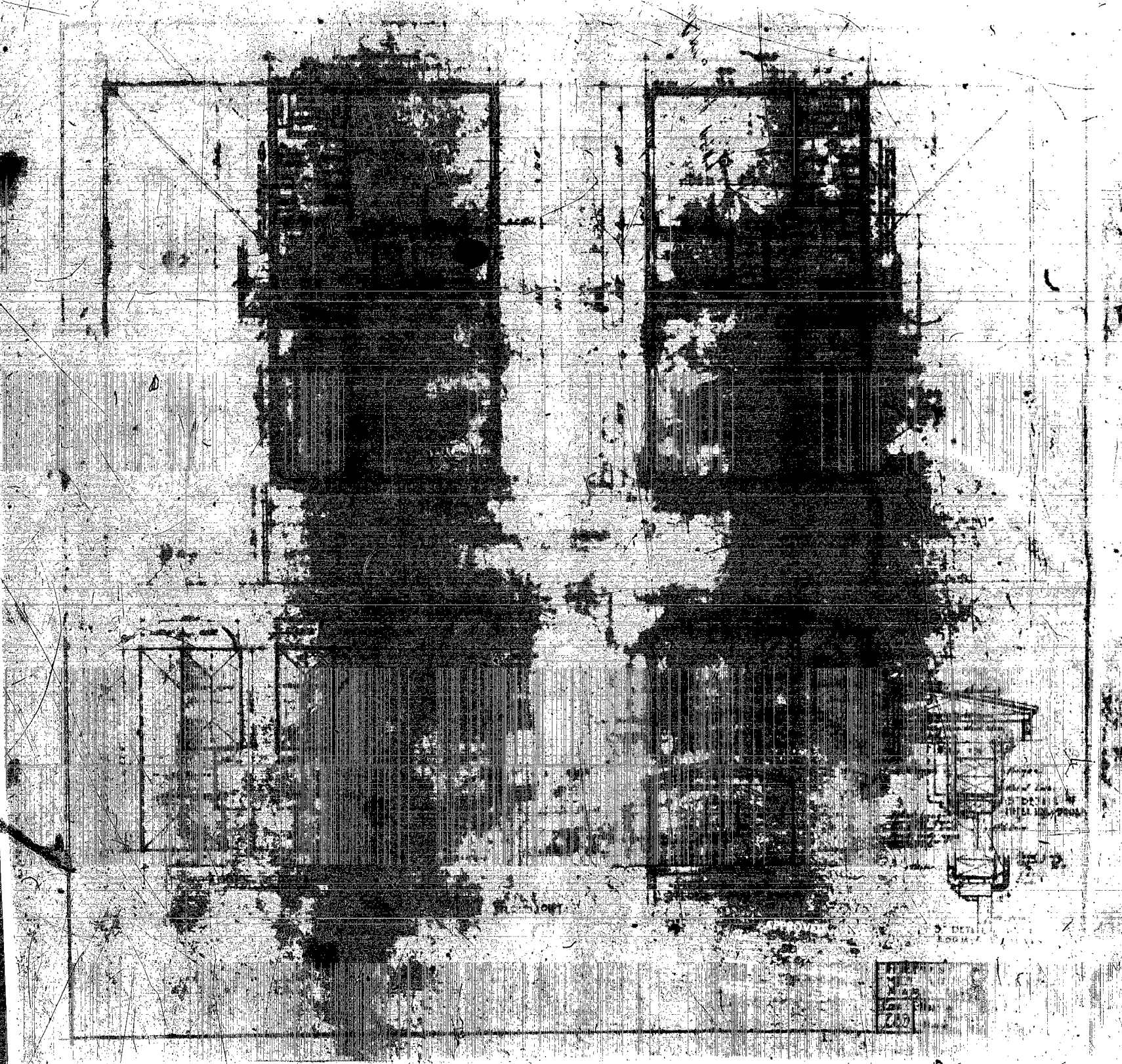
APARTMENT HOUSE - POL.  
183 - LOUISE D. LARKIN  
MIAMI BEACH - FLORIDA  
CORR. MARTIN L. HAMPTON  
600 - MIAMI BEACH - FLA. 2

DEPT. L.A.

APPROVED



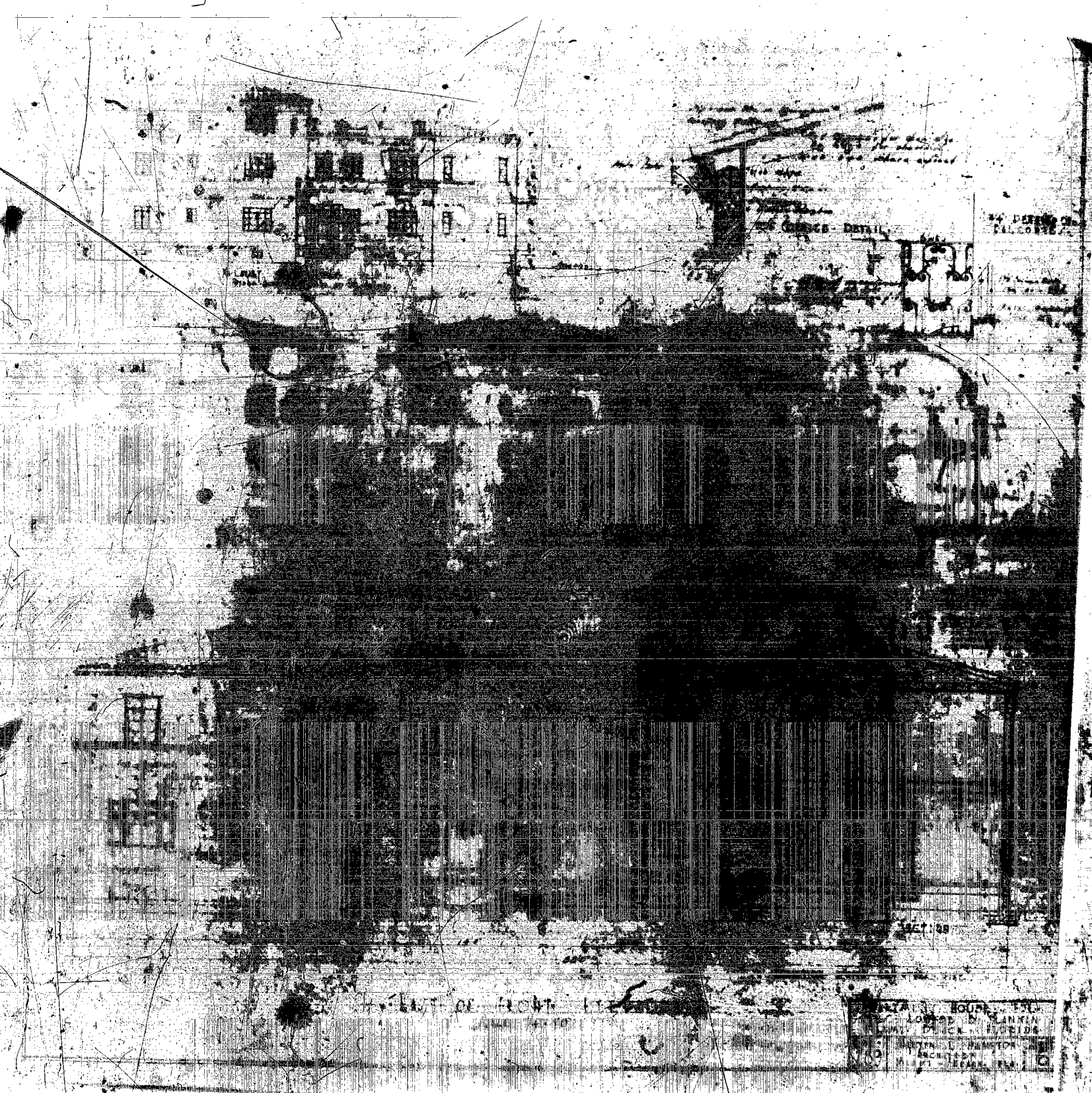
APARTMENT  
NO. 101  
1515  
1955



DETAIL OF WINDOW

DETAIL OF WINDOW

212

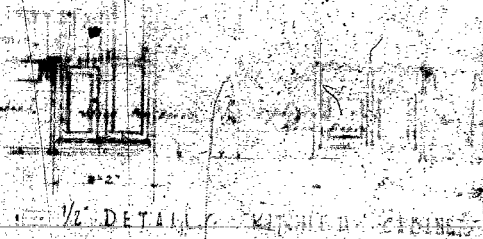
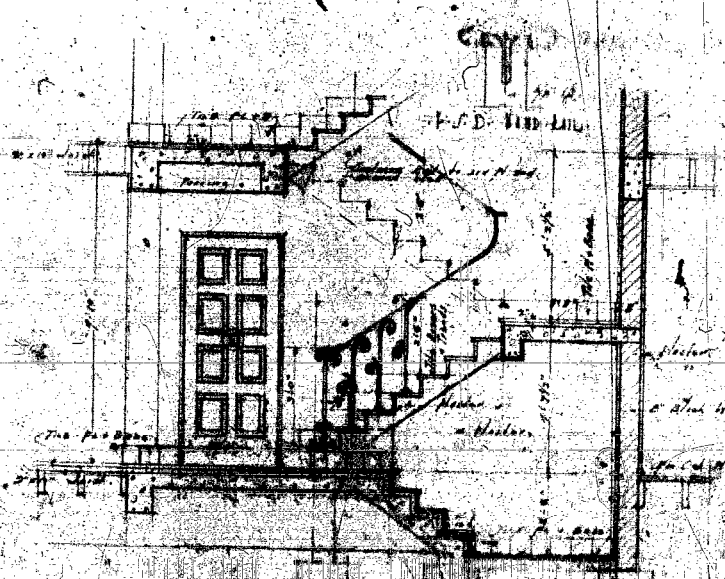


GEORGE - DETAIL

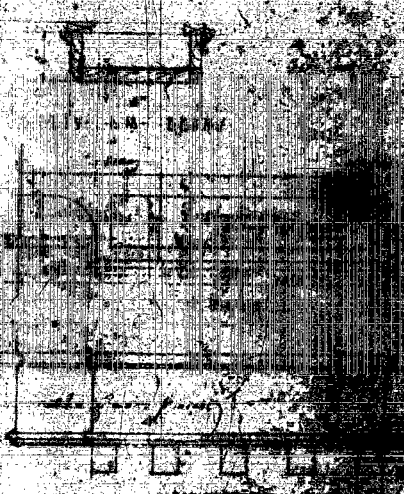
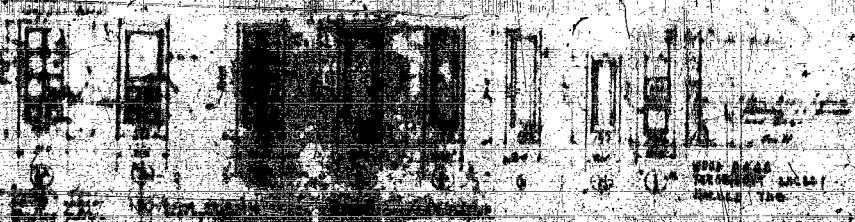
24 DEPT. OF  
CALIFORNIA

WEST COAST OF FLORIDA

1977 11 HOUR  
LONDON 10  
DICK 10  
UNITED STATES  
SECRETARY  
1977 11 HOUR



1/2 SECTION THROUGH STAIR  
 PLAN OF 1912



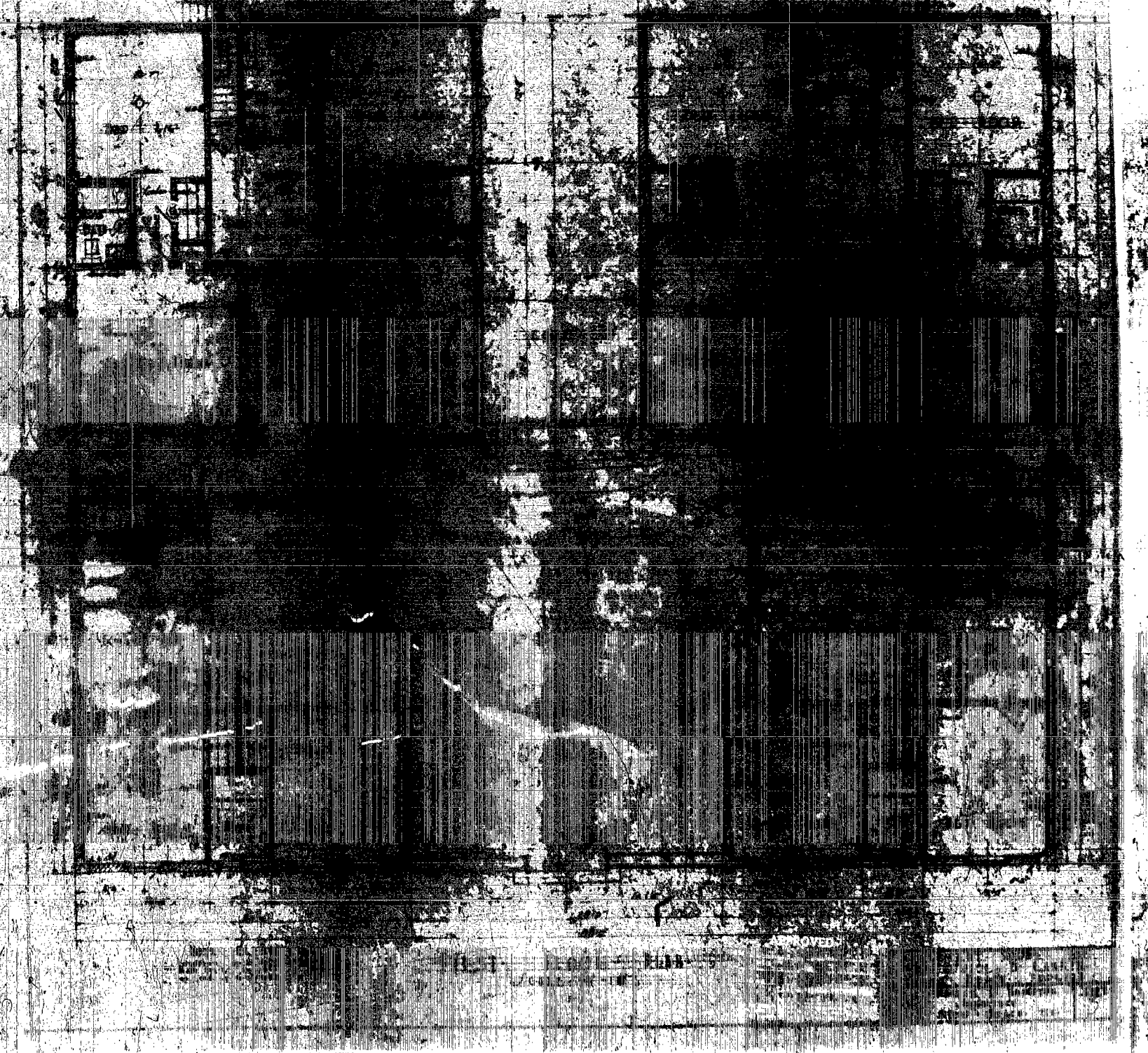
6240

1/2 METAL FLOOR PLAN  
 SECTION THROUGH MAIN COOLING UNIT  
 SECTION THROUGH MAIN COOLING UNIT  
 SECTION THROUGH MAIN COOLING UNIT

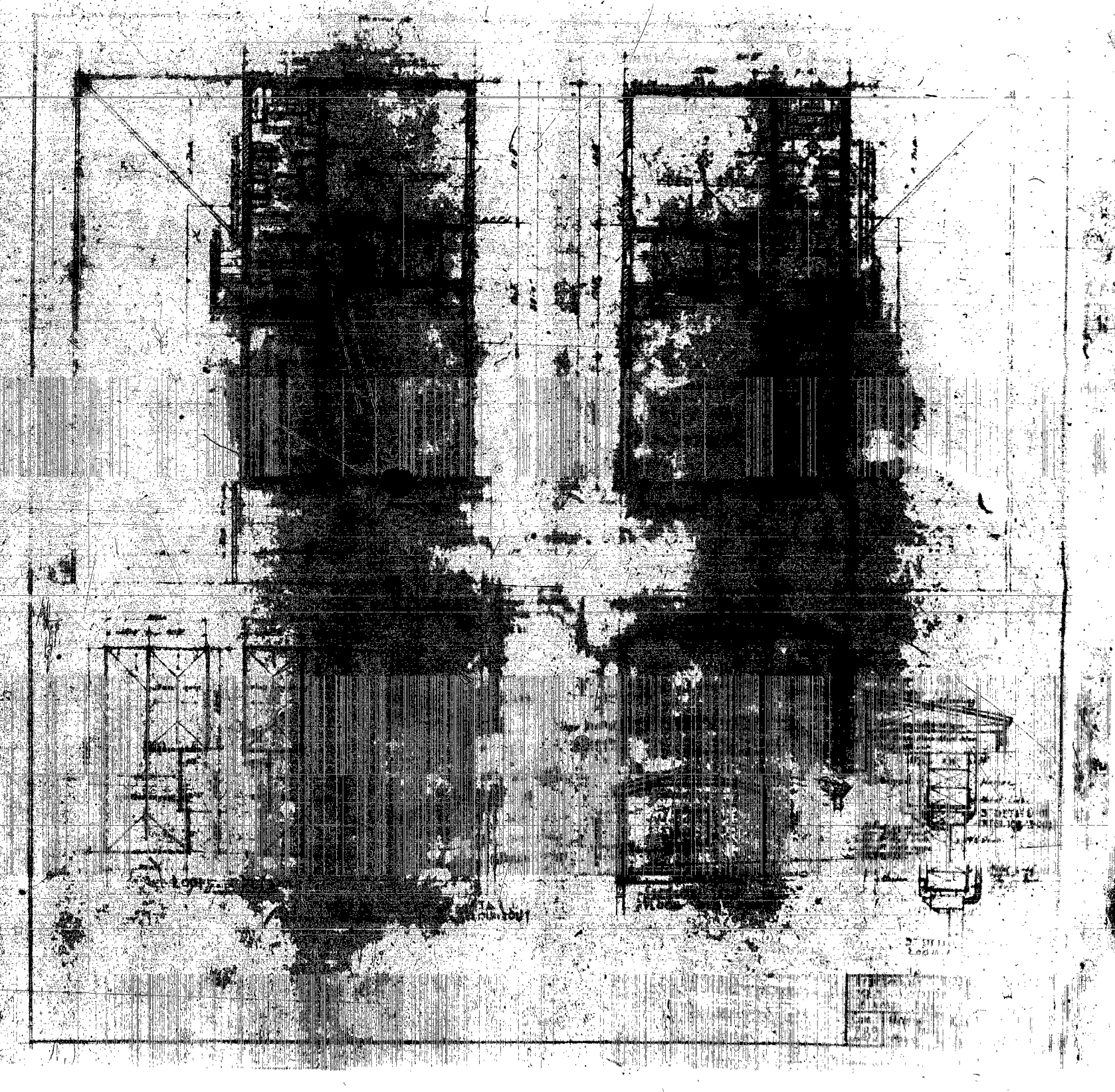
FOUNDATION PLAN

DEPARTMENT OF HOUSING & SOLID WASTE  
1000 N. MIAMI AVE. - 10TH FLOOR  
MIAMI, FLORIDA 33132  
DR. MARTIN L. HAMPTON, DIRECTOR  
RECEIVED  
1982 MIAMI DEPT. 111





MEMORANDUM  
TO: SAC, NEW YORK  
FROM: SAC, NEW YORK  
SUBJECT: [Illegible]



Handwritten notes and sketches at the top right of the page, including a small diagram of a structure.

34 DETAIL OF  
PAL COUPEL

1/4 Section  
10' x 10'

SECTION

LAST OR FRONT ELEVATION

PLANNING HOUSE, INC.  
LORAIN B. LANNIN  
MIAMI BEACH, FLORIDA  
EDD. W. HENNINGSON  
MICHIGAN