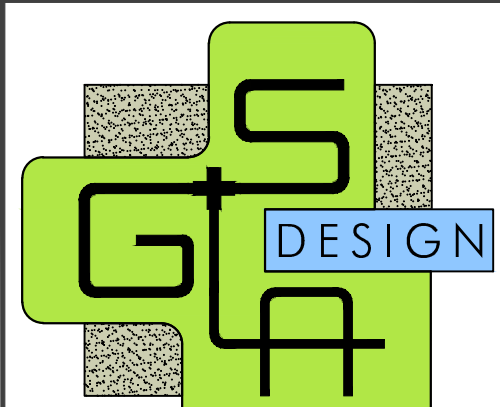
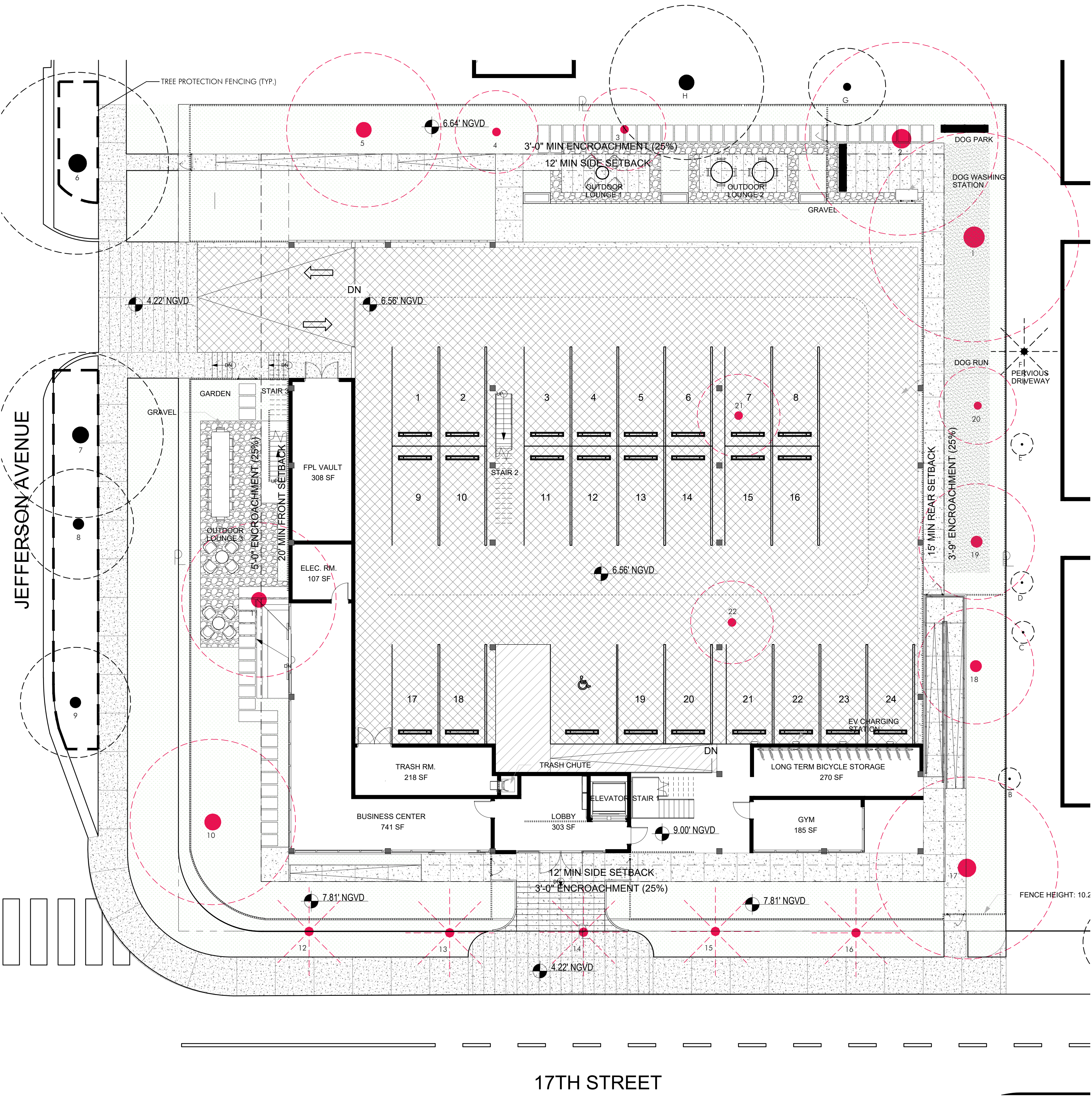


EXISTING TREE DISPOSITION LIST									
Tree #	Common Name	Scientific Name	DBH (inches)	Height (feet)	Diameter Canopy (feet)	TPZ/CRZ Radius (feet)	Condition	Disposition	Mitigation
1	Live Oak	<i>Quercus virginiana</i>	15	38	38	13	Good	Remove	15
2	Live Oak	<i>Quercus virginiana</i>	17	38	35	14	Moderate	Remove	17
3	Gumbo Limbo	<i>Bursera simaruba</i>	13	23	15	11	Good	Remove	13
4	Gumbo Limbo	<i>Bursera simaruba</i>	14	23	15	12	Moderate	Remove	14
5	Gumbo Limbo	<i>Bursera simaruba</i>	25	28	28	21	Moderate	Remove	25
6	Wild Tamarind	<i>Lysiloma latisiliquum</i>	20	32	33	17	Moderate	Keep	
7	Wild Tamarind	<i>Lysiloma latisiliquum</i>	20	30	30	17	Moderate	Keep	
8	Wild Tamarind	<i>Lysiloma latisiliquum</i>	11	28	20	9	Moderate	Keep	
9	Yellow Tabebuia	<i>Tabebuia spp.</i>	19	31	20	16	Poor	Keep	
10	Live Oak	<i>Quercus virginiana</i>	17	31	30	14	Good	Keep	
11	Live Oak	<i>Quercus virginiana</i>	16	31	28	13	Moderate	Remove	16
12	Royal Palm	<i>Roystonea regia</i>	17	36CT45OA	16	5	Good	Remove	17
13	Royal palm	<i>Roystonea regia</i>	17	36CT45OA	16	5	Good	Remove	17
14	Royal palm	<i>Roystonea regia</i>	17	36CT46OA	16	5	Good	Remove	17
15	Royal palm	<i>Roystonea regia</i>	17	33CT39OA	16	5	Poor	Remove	17
16	Royal palm	<i>Roystonea regia</i>	17	36CT45OA	16	5	Moderate	Remove	17
17	Live Oak	<i>Roystonea regia</i>	18	38	33	15	Moderate	Remove	18
18	Gumbo Limbo	<i>Bursera simaruba</i>	26	34	21	22	Moderate	Remove	26
19	Gumbo Limbo	<i>Bursera simaruba</i>	17	34	21	14	Moderate	Remove	17
20	Gumbo Limbo	<i>Bursera simaruba</i>	21	30	14	18	Moderate	Remove	21
21	Gumbo Limbo	<i>Bursera simaruba</i>	13	18	15	11	Moderate	Remove	13
22	Gumbo Limbo	<i>Bursera simaruba</i>	12	18	15	10	Moderate	Remove	12
A	Gumbo Limbo	<i>Bursera simaruba</i>	16	24	14	13	Moderate	Keep(offsite)	
B	Silver Buttonwood	<i>Conocarpus erectus var. sericeus</i>	4	16	4	3	Moderate	Keep(offsite)	
C	Silver Buttonwood	<i>Conocarpus erectus var. sericeus</i>	7	12	4	6	Poor	Keep(offsite)	
D	Silver Buttonwood	<i>Conocarpus erectus var. sericeus</i>	6	14	4	5	Poor	Keep(offsite)	
E	Silver Buttonwood	<i>Conocarpus erectus var. sericeus</i>	6	14	4	5	Poor	Keep(offsite)	
F	Washingtonia Palm	<i>Washingtonia robusta</i>	12	36CT45OA	12	5	Good	Keep(offsite)	
G	Egg Fruit	<i>Pouteria campechiana</i>	12	36	14	10	Poor	Keep(offsite)	
H	Avocado Tree	<i>Persea americana</i>	20	36	28	17	Moderate	Keep(offsite)	
TOTAL INCHES DBH TO BE REPLACED									292
TOTAL 12", 2" DBH TREES REQUIRED = 200" DBH									100
TOTAL 12", 2" DBH TREES PROVIDED = 136" DBH									68
TOTAL 12", 2" DBH TREES SHORTFALL = 64" DBH									32
TREE TRUST FUND CONTRUBUTION BASED ON SHORTFALL									\$22,000



GARDNER + SEMLER
LANDSCAPE ARCHITECTURE
WWW.GSLADESIGN.COM

17670 NW 78th AVE., SUITE 214
MIAMI, FL 33015
P 305.392.1016 F 305.392.1019
CORP. ID #0000266

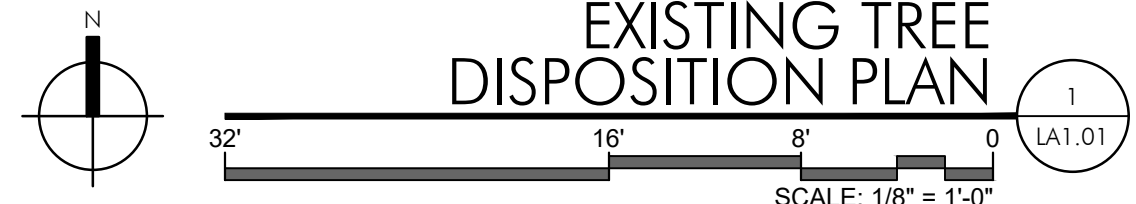
This drawing is the property of GSLA Design and is not to be reproduced or copied in whole or part without written permission. It is not to be used on any other project and is to be returned on request. Contractor is responsible for verifying all site conditions prior to proceeding with work.

COPYRIGHT © 2020

THE MORRIS
1707 JEFFERSON AVENUE MIAMI BEACH, FL 33139



REV.	
DRB SUBMITTAL	
TITLE	EXISTING TREE DISPOSITION PLAN
Ken Gardner Kelli Semler	
DATE	12.12.2022
SCALE	as noted
SHEET	LA1.01



HARDSCAPE LEGEND

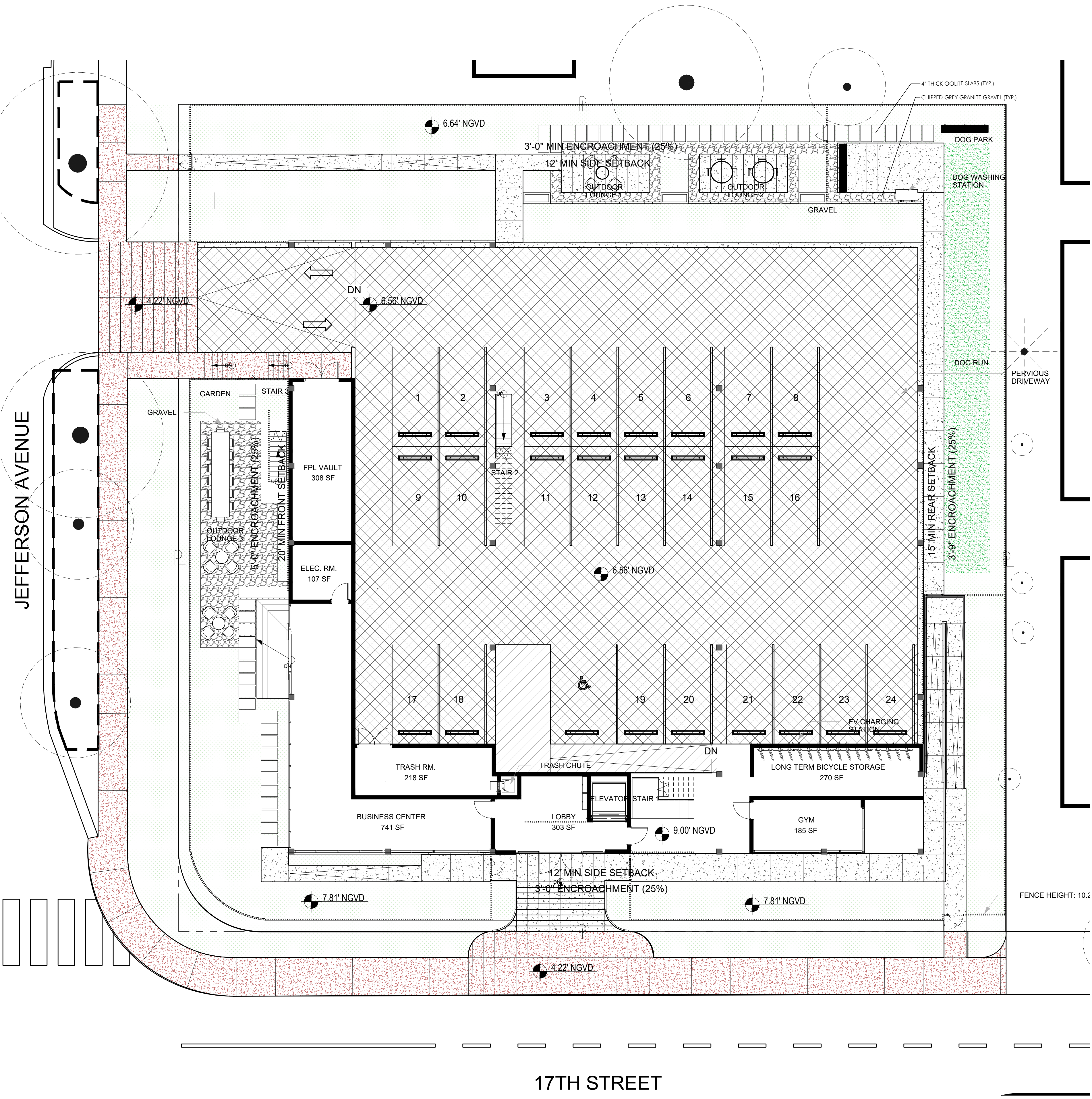
VARIES
4" THICK POURED CONC OVER COMPACTED BASE
-3,000 PSI, WWM reinforced
-Miami Beach Pink color
-Light Broom finish perpendicular to travel
-Align and score per plans.
-Submit Z&Z mock-up for approval.
*Note: excludes driveway (see civil plans)

VARIES
POURED CONC OVER COMPACTED BASE
-3,500 PSI, WWM reinforced
-4" thick pedestrian, thickened vehicular (see civil)
-Sandblasted finish
-Align and score per plans.
-Submit Z&Z mock-up for approval.

TURF BLOCK PERMEABLE PAVERS BY TREMOR
-Install over compacted base (see civil plans)
-Fill with chipped grey granite gravel

"PET PLATINUM" TURF BY SYNLAWN

LANDSCAPE AREA (typ.)

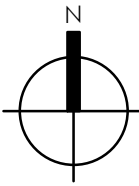


NOTE: ALL HARDSCAPE IS TO MEET SLIP RESISTANCE REQUIREMENTS. PAVERS & TRANSITIONS ARE TO BE FLUSH AND FREE FROM TRIP HAZARDS.

LEGEND

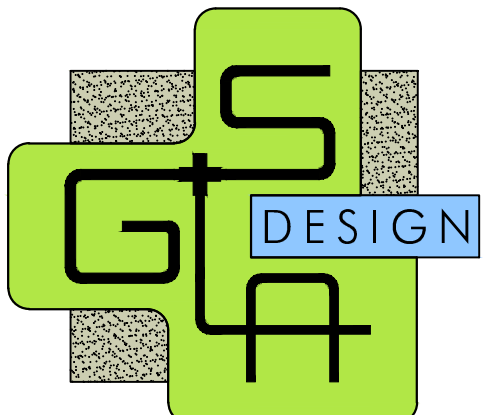
EXISTING PALM TO REMAIN

EXISTING TREE TO REMAIN



HARDSCAPE MATERIALS PLAN

SCALE: 1/8" = 1'-0"



GARDNER + SEMLER
LANDSCAPE ARCHITECTURE
WWW.GSLADESIGN.COM

17670 NW 78th AVE., SUITE 214
MIAMI, FL 33015
P 305.392.1016 F 305.392.1019
CORP. ID #0000266

This drawing is the property of GSLA Design and is not to be reproduced or copied in whole or part without written permission. It is not to be used on any other project and is to be returned on request. Contractor is responsible for verifying all site conditions prior to proceeding with work.
COPYRIGHT © 2020

THE MORRIS
1707 JEFFERSON AVENUE, MIAMI BEACH, FL 33139

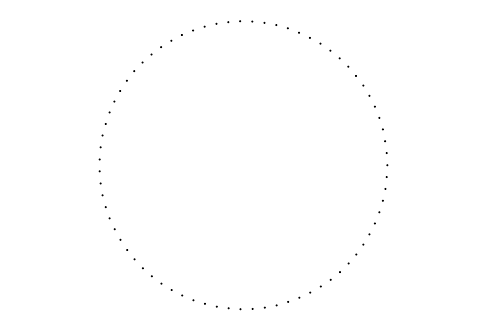


REV.	

DRB SUBMITTAL

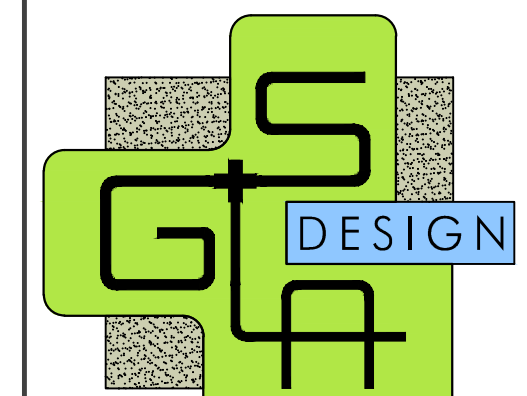
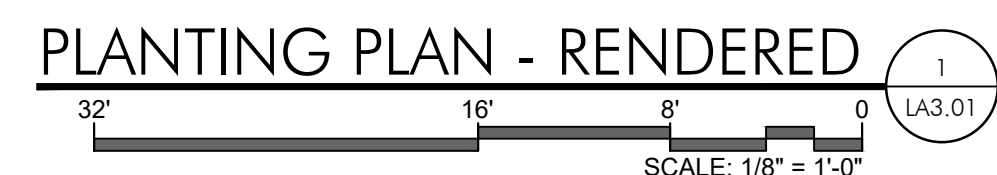
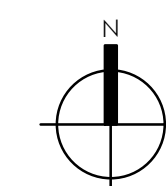
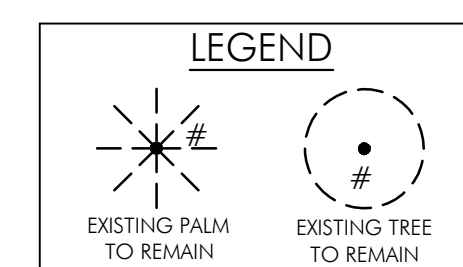
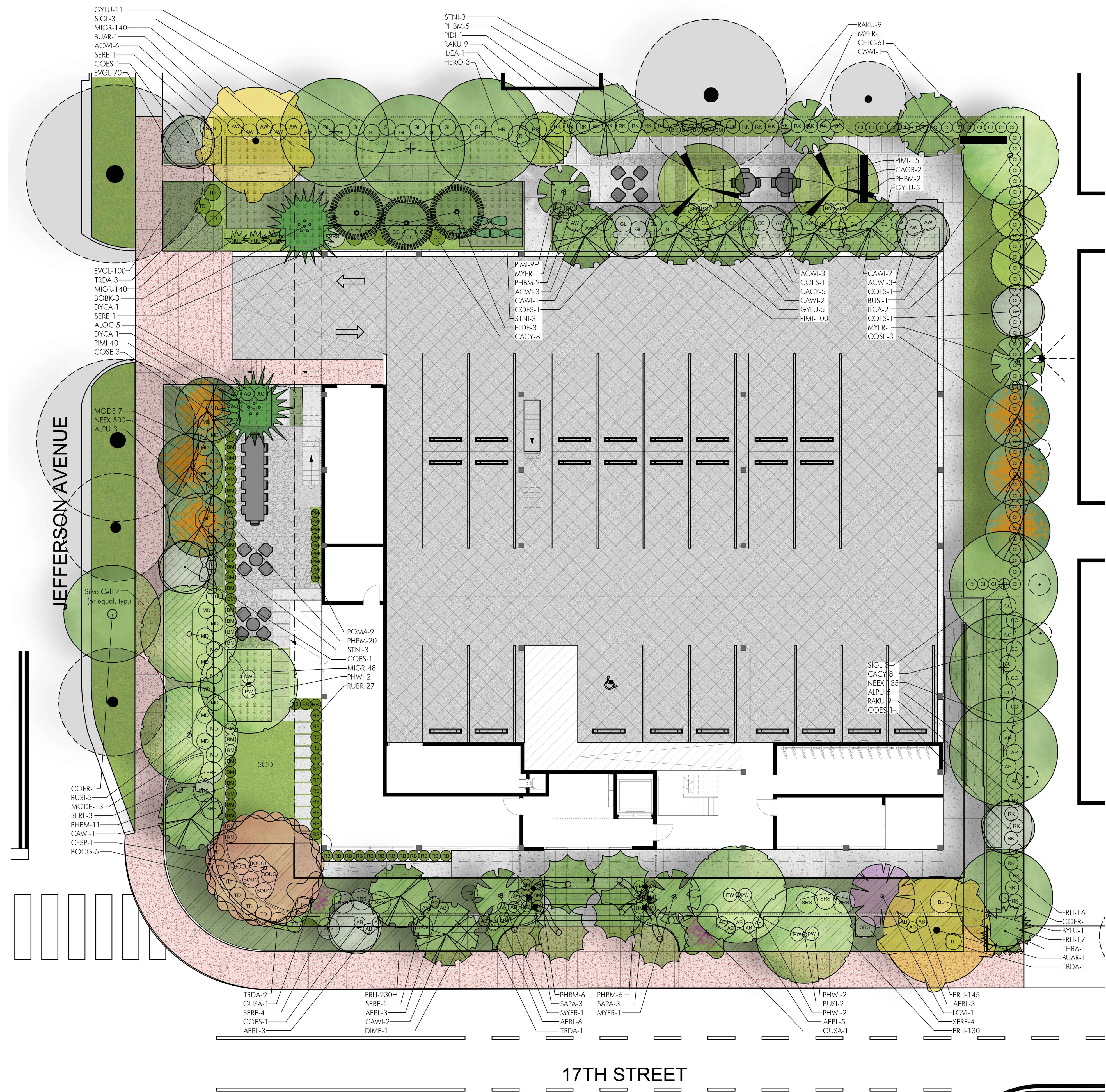
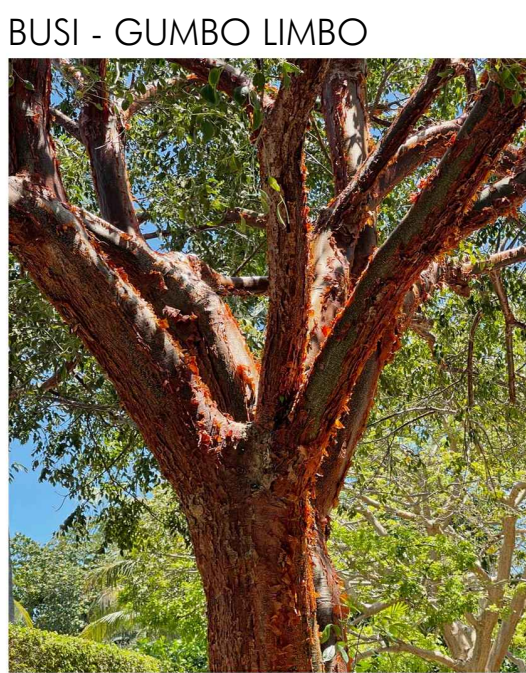
TITLE

HARDSCAPE MATERIALS PLAN



Ken Gardner	FL LA #1569
Kelli Semler	FL LA #6667205
DATE	12.12.2022
SCALE	as noted
SHEET	LA2.01

PALMS



GARDNER + SEMLER
LANDSCAPE ARCHITECTURE
WWW.GSLADESIGN.COM

17670 NW 78th AVE., SUITE 214
MIAMI, FL 33015
P 305.392.1016 F 305.392.1019
CORP. ID # 0000266

This drawing is the property of GS&L Design and is not to be reproduced or copied in whole or part without written permission. It is not to be used on any other project and is to be returned on request. Contractor is responsible for verifying all site conditions prior to proceeding with work.

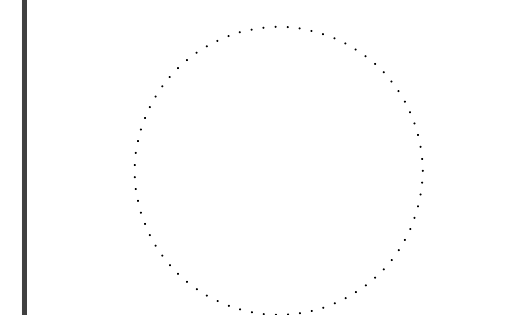
C O P Y R I G H T © 2 0 2 0

THE MORRIS
1707 JEFFERSON AVENUE, MIAMI BEACH, FL 33139



DRB SUBMITTAL

PLANTING
PLAN
-RENDERED-



Ken Gardner Kiehl Semler	FL LA #1569 FL LA #6667205
DATE	12.12.2022
SCALE	as noted
SHEET	LA3.01



Drawing is the property of GS&A Design
 and is not to be reproduced or copied in
 whole or in part without written permission. It is
 to be used only on the project for which it was
 prepared and is not to be used on any other project and is to
 be returned upon request. Contractor is responsible for
 verifying all site conditions prior to proceeding with work.
 COPYRIGHT © 2020



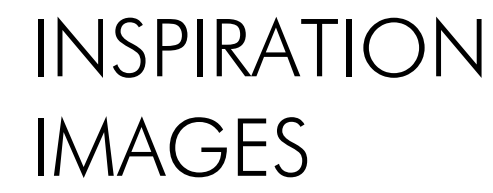
**KNOW WHAT'S BELOW
ALWAYS CALL 811
BEFORE YOU DIG**

It's fast. It's free. It's the law.

www.callsunshine.com

[illegible]INSPIRATION
IMAGES

LA3.02



LANDSCAPE SPECIFICATIONS
PART 1 - GENERAL

1.1 SCOPE
A. Contractor shall provide all labor, materials, equipment, supervision, and related work necessary to complete the landscape work in accordance with the intent of the landscape plans, schedules and these specifications. The extent of work is shown on the drawings which are a part of this document.

1.2 CONTRACTOR QUALIFICATIONS
A. Landscape installation work to be performed by a Contractor Certified by the Florida Nurserymen, Growers and Landscape Association (FNLGA) as a Certified Landscape Contractor. Any pruning to be supervised by an Arborist, certified by the International Society of Arboriculture (ISA) and licensed in County where work is performed.

1.3 INVESTIGATION OF UTILITIES
A. Prior to beginning work, the Contractor shall be responsible to locate existing underground utilities. Check with all utility companies and Sunshine State, call (811).

1.4 SUBSTITUTIONS
A. Only materials specified will be accepted, unless approved in writing by the Landscape Architect in advance.

1.5 PLANT SIZES
A. All plant sizes shall equal or exceed the minimum sizes as specified in the plant list. If plant sizes of local codes and ordinances require larger plant material than specified on plans, then they shall supercede the sizes on the plan. When plant sizes are specified as a range of size, installed materials shall average the mean of the range specified. Plants shall be measured following pruning, with branches in normal position. All necessary pruning shall be done at the time of planting.

1.6 PLANT QUALITY
A. All plant material shall be equal to or better than Florida No. 1 as classified by "Grades and Standards for Nursery Plants" by the Division of Plant Industry, Florida Department of Agriculture. They shall have a growth habit that is normal for the species; healthy, vigorous, free from insects, disease and injury.

B. The Owner or Landscape Architect reserves the right to refuse any plant material which does not conform to the intent of the written specifications or design.

C. CIRCLING ROOTS FOUND ON CONTAINER-GROWN MATERIAL WILL NOT BE ACCEPTED UNLESS REMEDIAL ROOT PRUNING, APPROVED BY THE LANDSCAPE ARCHITECT IS DONE BEFORE PLANTING.

1.7 PLANT QUANTITY
A. The plant quantities shown on the plant list are to be used only as an aid to bidders. In the case of discrepancy between the plant list and the plan, the quantity on the plan shall override the plant list.

1.8 UNIT PRICES
A. The successful bidder shall furnish to the Owner and the Landscape Architect, a unit price breakdown for all materials. The Owner may, at his discretion, add to or delete from the materials utilizing the unit price breakdown submitted to and accepted by the Owner.

1.9 SUBMITTALS
A. Fertilizer: The Contractor shall submit to the Owner and Landscape Architect documentation that all the fertilizer used for the project is of the analysis specified and placed at the rates specified in section 2.2 FERTILIZER.

B. Planting soil: The Contractor shall submit a sample of the planting soil (approximately 1 cu. ft.) for approval by the Landscape Architect prior to delivery to the site.

1.10 CLEAN-UP & MAINTENANCE OF TRAFFIC
A. Follow procedures in FDOT Index 600 for maintenance of traffic during construction.

B. At the end of each work day, the Contractor shall remove debris and shall barricade the un-filled holes in a manner appropriate in the path of pedestrians and motorists.

C. Upon completion of the work or any major portion of the work or as directed by the Landscape Architect, all debris and surplus material from his work shall be removed from the job site.

1.11 MAINTENANCE PRIOR TO ACCEPTANCE
A. The Contractor is responsible to maintain the plantings until they are accepted under the provisions of 1.12 "ACCEPTANCE OF INSTALLATION".

1. Plants: Begin maintenance immediately following the final plant installation operation for each plant and continue until all plant installation is complete and accepted. Maintenance shall include watering all plants, weeding, mulching, pest and disease control, lightening and repairing of guys, repair of braces, removal of dead growth, resetting of plants to proper grade or up-right position, restoration of plant sources, litter pick-up in plant beds and other necessary operations to assure specified minimum grade of Florida No. 1.

2. Turf Areas: Begin maintenance of turf immediately following the placement of sod and continue until sod installation is complete and accepted. Maintenance shall include but not be limited to, watering, leveling, mowing, weed and pest control, fungus and disease control and other necessary operations as determined by the Landscape Architect and good nursery practice.

3. Re-setting or straightening trees and palms:
The Contractor shall re-set and/or straighten trees and palms as required at no additional cost to the Owner unless caused by sustained winds of 75 mph or more. Then, the costs of the operations may be charged to the Owner. Re-set trees within 48 hours.

1.12 ACCEPTANCE OF INSTALLATION
A. Inspection: Inspection of the work, to determine completion of contract work, exclusive of the possible replacement of plants and turf, will be made by the Landscape Architect at the conclusion of the maintenance period. Written notice requesting such an inspection and submitted by the Contractor at least ten (10) days prior to the anticipated date.

1.13 GUARANTEE
A. Guarantee all plants for a period of one year (CCD). Guarantee shall commence from the date of written acceptance. Plant material which is on the site and scheduled to be relocated is not covered by the guarantee except in the case of Contractor's negligence or work that has been done in an unworkman-like manner. The Contractor is not responsible for loss due to acts of god, (i.e.) sustained winds of 75 mph or more, floods, frost, lightning, vandalism or theft.

1.14 REPLACEMENT
A. Replacement shall be made during the guarantee period as directed by the Landscape Architect within ten (10) days from time of notification. For all replacement plant material, the guarantee period shall extend for an additional forty-five (45) days beyond the original guarantee period. The Contractor shall be responsible to provide water to the replacement plants in sufficient quantity to aid in their establishment. At the end of the guarantee period, inspection will be made by the Landscape Architect, upon written notice requesting such inspection and submitted by the Contractor at least five (5) days before the anticipated date. Replacement plants must meet the requirements of Florida No. 1 at time of inspection. Remove from the site all plants that are dead or in a state of unsatisfactory growth, as determined by the Landscape Architect. Replace these and any plants missing due to the Contractor's negligence as soon as conditions permit.

1. Materials and Operations: All replacement plants shall be of the same kind and size as indicated on the plant list. The Contractor shall supply and plant the plants as specified under planting operations.

2. Cost of Replacements: A sum sufficient to cover the estimated cost of possible replacements, including material and labor will be retained by the Owner and paid to the Contractor after all replacements have been satisfactorily made and approved by the Landscape Architect.

PART 2 - MATERIALS

2.1 PLANTING SOIL
A. Planting soil for trees, shrubs and ground covers shall be of the composition noted on the plans, measured by volume.

B. Soil for Sodded Areas: shall be coarse lawn sand.

2.2 FERTILIZER
A. Fertilizer for trees, palms, shrubs, and groundcovers shall be as follows: LESCO Palm Special 13-3-13 or equal, Sulfur coated with iron, and other minor elements and maximum of 2% chlorine, or brand with equal analysis. The fertilizer shall be uniform in composition, dry and free flowing and shall be delivered to the site in the original unopened containers, bearing the manufacturer's guaranteed analysis. Fertilizer for sod and seeded areas shall be 8-6-8, 50% organically derived nitrogen, or equal.

2.3 WATER
A. The Contractor shall provide potable water on site, available from the start of planting. The Contractor is responsible to ascertain the location and accessibility of the water source. The Contractor is responsible to provide the means of distribution (i.e. water truck, hoses, etc.) for distribution of water to the planting areas.

2.4 MULCH
A. Mulch shall be as specified on the Plant List.

2.5 ROOT BARRIER MATERIAL
A. Root barrier material shall be 24" deep polypropylene panels by DeepRoot or approved equal.

B. Install per details in the plans.

PART 3 - INSTALLATION PROCEDURES

3.1 LAYOUT
A. Verify location of all underground utilities and obstructions prior to excavation.

3.2 HERBICIDE TREATMENT
A. In all areas infected with weed and/or grass growth, a systemic herbicide shall be applied per manufacturer's rates. When it has been established where work will be done, the systemic herbicide shall be applied in accordance with manufacturer's labeling to kill all noxious growth. Contractor shall schedule his work to allow more than one application to obtain at least 95% kill of undesirable growth. If necessary, Contractor shall conduct a test to establish suitability of product and applicator to be used on this project, prior to execution of the full application.

3.3 PLANT PIT EXCAVATION AND BACKFILLING
A. Trees: See the Planting and Bracing Details and notes.

B. All planting holes shall be hand dug where machine dug holes may adversely affect utilities or improvements.

C. Shrubs and Groundcover: Shrubs and groundcover shall be planted in a soil bed as described in the notes and details. Space shrubs and provide setback from curbs and pavements as shown in the plans.

D. Watering of field-grown plants: Thoroughly puddle in water to remove any air pockets in the plant hole.

3.4 WATERING
A. The Contractor is responsible to provide the water for all new plants and transplants and means of distribution (i.e. hand watering or water truck) during the maintenance period and extending into the period after acceptance until the full schedule as listed below is complete. Water for trees and other large field grown plants shall be supplemented by hand or water truck, in addition to the irrigation system (if one is provided). Contractor can adjust watering schedule during heavy rain season upon approval of the Landscape Architect.

AMOUNT OF WATER PER APPLICATION
For trees up to 5 inch caliper - 5 gallons
From 5 to 8 inch caliper - 25 gallons
9 inch and up caliper - 50 gallons

FREQUENCY OF WATER
Daily for the first week
3 times per week for weeks 2 - 5
2 times per week for weeks 6 - 8
1 time per week for weeks 9 - 12

B. Water in plants by thoroughly soaking of the entire root ball immediately after planting. For large trees and shrubs, add water while backfilling hole to eliminate any air pockets in the soil around the root ball.

C. Water shrubs, sod and groundcover a minimum of once daily for a week or until an irrigation system is fully operational. If no irrigation system is to be installed, the Contractor shall be responsible for watering the shrub, sod, and groundcover for the time specified above, after installation of each section of the planting installed.

3.5 FERTILIZING
A. Add fertilizer on top of the surface of shrubs beds and tree and palms root balls two (2) months after installation. Fertilize sod within two (2) days after installing other planting of each segment of the job. Fertilizer shall be applied after soil has been well moistened. Fertilizer shall be washed off of plant leaves and stems immediately after application. Apply at the following rates:

1. Trees and Large Shrubs: One (1) pound per inch of trunk diameter, spread evenly over the root ball area.

2. Shrubs: One half (1/2) handful per shrub, spread evenly over the root ball area.

3. Groundcover: Twelve (12) pounds per 100 sq. ft. of bed area.

4. Sod: Twelve (12) pounds per 1,000 sq. ft. Wash fertilizer off blades immediately after spreading.

3.6 MULCHING
A. Spread mulch three (3) inches thick uniformly over the entire surface of shrubs and groundcover beds, depth measured after setting, unless otherwise specified in the plans. Provide 36" diameter bed of mulch, measured from outer edge of the trunk, for all trees and palms planted in sod areas. Keep mulch away from contact with the trunk. Create a 6" high ring of mulch at the outer edge of tree and palm holes.

3.7 GUYING AND BRACING
A. See the details bound herewith or made part of the plans.

3.8 SODDING
A. Provide a blanket of lawn sand as described in the notes in these plans. Prior to planting, remove stones, sticks, etc. from the sub-soil surface. Excavate existing non-conforming soil as required so that the finish grade of sod is flush with adjacent pavement or top of curb as well as adjacent sod in the case of sod patching.

B. Place sod on a moistened soil, with edges tightly butted, in staggered rows at right angles to slopes. The sod shall be rolled with a 500 pound hand roller immediately after placing.

C. Keep edge of sod bed a minimum of 18" away from groundcover beds and 24" away from edge of shrub beds and 36" from trees, measured from the edge of plant or tree trunk.

D. Sod shall be watered immediately after installation to uniformly wet the soil to at least two inches below the bottom of sod strips.

E. Apply fertilizer to the sod as specified in Section 3.5.

F. Excavate and remove excess soil so top of sod is flush w/top of curb or adjacent pavement, or adjacent existing sod.

PLANTING & BRACING DETAIL FOR LEANING/CROOKED PALMS

N.T.S.

PLANTING & BRACING DETAIL FOR LEANING/CROOKED PALMS

N.T.S.

PLANTING & BRACING DETAIL FOR LEANING/CROOKED PALMS

N.T.S.

PLANTING & BRACING DETAIL FOR LEANING/CROOKED PALMS

N.T.S.

PLANTING & BRACING DETAIL FOR LEANING/CROOKED PALMS

N.T.S.

PLANTING & BRACING DETAIL FOR LEANING/CROOKED PALMS

N.T.S.

PLANTING & BRACING DETAIL FOR LEANING/CROOKED PALMS

N.T.S.

PLANTING & BRACING DETAIL FOR LEANING/CROOKED PALMS

N.T.S.

PLANTING & BRACING DETAIL FOR LEANING/CROOKED PALMS

N.T.S.

PLANTING & BRACING DETAIL FOR LEANING/CROOKED PALMS

N.T.S.

PLANTING & BRACING DETAIL FOR LEANING/CROOKED PALMS

N.T.S.

PLANTING & BRACING DETAIL FOR LEANING/CROOKED PALMS

N.T.S.

PLANTING & BRACING DETAIL FOR LEANING/CROOKED PALMS

N.T.S.

PLANTING & BRACING DETAIL FOR LEANING/CROOKED PALMS

N.T.S.

PLANTING & BRACING DETAIL FOR LEANING/CROOKED PALMS

N.T.S.

PLANTING & BRACING DETAIL FOR LEANING/CROOKED PALMS

N.T.S.

PLANTING & BRACING DETAIL FOR LEANING/CROOKED PALMS

N.T.S.

PLANTING & BRACING DETAIL FOR LEANING/CROOKED PALMS

N.T.S.

PLANTING & BRACING DETAIL FOR LEANING/CROOKED PALMS

N.T.S.

PLANTING & BRACING DETAIL FOR LEANING/CROOKED PALMS

N.T.S.

PLANTING & BRACING DETAIL FOR LEANING/CROOKED PALMS

N.T.S.

PLANTING & BRACING DETAIL FOR LEANING/CROOKED PALMS

N.T.S.

PLANTING & BRACING DETAIL FOR LEANING/CROOKED PALMS

N.T.S.

PLANTING & BRACING DETAIL FOR LEANING/CROOKED PALMS

N.T.S.

PLANTING & BRACING DETAIL FOR LEANING/CROOKED PALMS

N.T.S.

PLANTING & BRACING DETAIL FOR LEANING/CROOKED PALMS

N.T.S.

PLANTING & BRACING DETAIL FOR LEANING/CROOKED PALMS

N.T.S.

PLANTING & BRACING DETAIL FOR LEANING/CROOKED PALMS

N.T.S.

PLANTING & BRACING DETAIL FOR LEANING/CROOKED PALMS

N.T.S.

PLANTING & BRACING DETAIL FOR LEANING/CROOKED PALMS

N.T.S.

PLANTING & BRACING DETAIL FOR LEANING/CROOKED PALMS

N.T.S.

PLANTING & BRACING DETAIL FOR LEANING/CROOKED PALMS

N.T.S.

PLANTING & BRACING DETAIL FOR LEANING/CROOKED PALMS

N.T.S.

PLANTING & BRACING DETAIL FOR LEANING/CROOKED PALMS

N.T.S.

PLANTING & BRACING DETAIL FOR LEANING/CROOKED PALMS

N.T.S.

PLANTING & BRACING DETAIL FOR LEANING/CROOKED PALMS

N.T.S.

PLANTING & BRACING DETAIL FOR LEANING/CROOKED PALMS

N.T.S.

PLANTING & BRACING DETAIL FOR LEANING/CROOKED PALMS

N.T.S.

PLANTING & BRACING DETAIL FOR LEANING/CROOKED PALMS

N.T.S.

PLANTING & BRACING DETAIL FOR LEANING/CROOKED PALMS

N.T.S.

PLANTING & BRACING DETAIL FOR LEANING/CROOKED PALMS

N.T.S.

PLANTING & BRACING DETAIL FOR LEANING/CROOKED PALMS

N.T.S.

PLANTING & BRACING DETAIL FOR LEANING/CROOKED PALMS

N.T.S.

PLANTING & BRACING DETAIL FOR LEANING/CROOKED PALMS

N.T.S.

PLANTING & BRACING DETAIL FOR LEANING/CROOKED PALMS

N.T.S.

PLANTING & BRACING DETAIL FOR LEANING/CROOKED PALMS

N.T.S.

PLANTING & BRACING DETAIL FOR LEANING/CROOKED PALMS

N.T.S.

PLANTING & BRACING DETAIL FOR LEANING/CROOKED PALMS

N.T.S.

PLANTING & BRACING DETAIL FOR LEANING/CROOKED PALMS

N.T.S.

PLANTING & BRACING DETAIL FOR LEANING/CROOKED PALMS

N.T.S.

PLANTING & BRACING DETAIL FOR LEANING/CROOKED PALMS

N.T.S.

PLANTING & BRACING DETAIL FOR LEANING/CROOKED PALMS

N.T.S.

PLANTING & BRACING DETAIL FOR LEANING/CROOKED PALMS

N.T.S.

PLANTING & BRACING DETAIL FOR LEANING/CROOKED PALMS

N.T.S.

PLANTING & BRACING DETAIL FOR LEANING/CROOKED PALMS

N.T.S.

PLANTING & BRACING DETAIL FOR LEANING/CROOKED PALMS

N.T.S.

PLANTING & BRACING DETAIL FOR LEANING/CROOKED PALMS

N.T.S.

PLANTING & BRACING DETAIL FOR LEANING/CROOKED PALMS

N.T.S.

PLANTING & BRACING DETAIL FOR LEANING/CROOKED PALMS

N.T.S.

PLANTING & BRACING DETAIL FOR LEANING/CROOKED PALMS

N.T.S.

PLANTING & BRACING DETAIL FOR LEANING/CROOKED PALMS

N.T.S.

PLANTING & BRACING DETAIL FOR LEANING/CROOKED PALMS

N.T.S.

PLANTING & BRACING DETAIL FOR LEANING/CROOKED PALMS

N.T.S.

PLANTING & BRACING DETAIL FOR LEANING/CROOKED PALMS

N.T.S.

PLANTING & BRACING DETAIL FOR LEANING/CROOKED PALMS

N.T.S.

PLANTING & BRACING DETAIL FOR LEANING/CROOKED PALMS

N.T.S.

PLANTING & BRACING DETAIL FOR LEANING/CROOKED PALMS

N.T.S.

PLANTING & BRACING DETAIL FOR LEANING/CROOKED PALMS

N.T.S.

PLANTING & BRACING DETAIL FOR LEANING/CROOKED PALMS

N.T.S.

PLANTING & BRACING DETAIL FOR LEANING/CROOKED PALMS

N.T.S.

PLANTING & BRACING DETAIL FOR LEANING/CROOKED PALMS

N.T.S.

PLANTING & BRACING DETAIL FOR LEANING/CROOKED PALMS

N.T.S.

PLANTING & BRACING DETAIL FOR LEANING/CROOKED PALMS

N.T.S.

PLANTING & BRACING DETAIL FOR LEANING/CROOKED PALMS

N.T.S.

PLANTING & BRACING DETAIL FOR LEANING/CROOKED PALMS

N.T.S.

PLANTING & BRACING DETAIL FOR LEANING/CROOKED PALMS

N.T.S.

PLANTING & BRACING DETAIL FOR LEANING/CROOKED PALMS

N.T.S.

PLANTING & BRACING DETAIL FOR LEANING/CROOKED PALMS

N.T.S.

PLANTING & BRACING DETAIL FOR LEANING/CROOKED PALMS

N.T.S.

PLANTING & BRACING DETAIL FOR LEANING/CROOKED PALMS

N.T.S.

PLANTING & BRACING DETAIL FOR LEANING/CROOKED PALMS

N.T.S.

PLANTING & BRACING DETAIL FOR LEANING/CROOKED PALMS

N.T.S.

PLANTING & BRACING DETAIL FOR LEANING/CROOKED PALMS

N.T.S.

PLANTING & BRACING DETAIL FOR LEANING/CROOKED PALMS

N.T.S.

PLANTING & BRACING DETAIL FOR LEANING/CROOKED PALMS

N.T.S.

PLANTING & BRACING DETAIL FOR LEANING/CROOKED PALMS

N.T.S.

PLANTING & BRACING DETAIL FOR LEANING/CROOKED PALMS

N.T.S.

PLANTING & BRACING DETAIL FOR LEANING/CROOKED PALMS

N.T.S.

PLANTING & BRACING DETAIL FOR LEANING/CROOKED PALMS

N.T.S.

PLANTING & BRACING DETAIL FOR LEANING/CROOKED PALMS

N.T.S.

PLANTING & BRACING DETAIL FOR LEANING/CROOKED PALMS

N.T.S.

PLANTING & BRACING DETAIL FOR LEANING/CROOKED PALMS

N.T.S.

PLANTING & BRACING DETAIL FOR LEANING/CROOKED PALMS

N.T.S.

PLANTING & BRACING DETAIL FOR LEANING/CROOKED PALMS

N.T.S.

PLANTING & BRACING DETAIL FOR LEANING/CROOKED PALMS

N.T.S.

PLANTING & BRACING DETAIL FOR LEANING/CROOKED PALMS

N.T.S.

PLANTING & BRACING DETAIL FOR LEANING/CROOKED PALMS

N.T.S.

PLANTING & BRACING DETAIL FOR LEANING/CROOKED PALMS

N.T.S.

PLANTING & BRACING DETAIL FOR LEANING/CROOKED PALMS

N.T.S.

PLANTING & BRACING DETAIL FOR LEANING/CROOKED PALMS

N.T.S.

PLANTING & BRACING DETAIL FOR LEANING/CROOKED PALMS

N.T.S.

PLANTING & BRACING DETAIL FOR LEANING/CROOKED PALMS

N.T.S.

PLANTING & BRACING DETAIL FOR LEANING/CROOKED PALMS

N.T.S.

PLANTING & BRACING DETAIL FOR LEANING/CROOKED PALMS

N.T.S.

PLANTING & BRACING DETAIL FOR LEANING/CROOKED PALMS

N.T.S.

PLANTING & BRACING DETAIL FOR LEANING/CROOKED PALMS

N.T.S.

PLANTING & BRACING DETAIL FOR LEANING/CROOKED PALMS

N.T.S.

PLANTING & BRACING DETAIL FOR LEANING/CROOKED PALMS

N.T.S.

PLANTING & BRACING DETAIL FOR LEANING/CROOKED PALMS

N.T.S.

PLANTING & BRACING DETAIL FOR LEANING/CROOKED PALMS

N.T.S.

PLANTING & BRACING DETAIL FOR LEANING/CROOKED PALMS

N.T.S.

PLANTING & BRACING DETAIL FOR LEANING/CROOKED PALMS

N.T.S.

PLANTING & BRACING DETAIL FOR LEANING/CROOKED PALMS

N.T.S.

PLANTING & BRACING DETAIL FOR LEANING/CROOKED PALMS

N.T.S.

PLANTING & BRACING DETAIL FOR LEANING/CROOKED PALMS

N.T.S.

PLANTING & BRACING DETAIL FOR LEANING/CROOKED PALMS

N.T.S.

PLANTING & BRACING DETAIL FOR LEANING/CROOKED PALMS

N.T.S.

PLANTING & BRACING DETAIL FOR LEANING/CROOKED PALMS

N.T.S.

PLANTING & BRACING DETAIL FOR LEANING/CROOKED PALMS

N.T.S.

PLANTING & BRACING DETAIL FOR LEANING/CROOKED PALMS

N.T.S.

PLANTING & BRACING DETAIL FOR LEANING/CROOKED PALMS

N.T.S.

PLANTING & BRACING DETAIL FOR LEANING/CROOKED PALMS

N.T.S.

PLANTING & BRACING DETAIL FOR LEANING/CROOKED PALMS

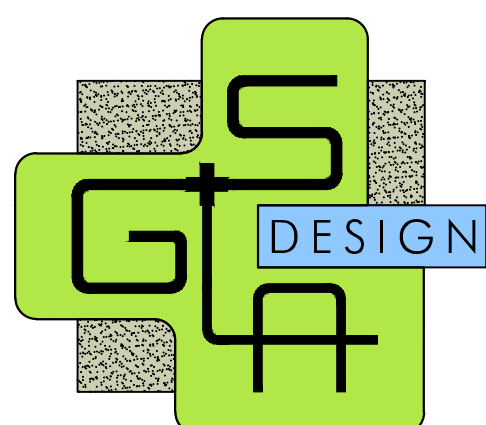
N.T.S.

PLANTING & BRACING DETAIL FOR LEANING/CROOKED PALMS

N.T.S.

PLANTING & BRACING DETAIL FOR LEANING/CROOKED PALMS

N.T.S.



GARDNER + SEMLER
LANDSCAPE ARCHITECTURE
WWW.GSLADESIGN.COM

17670 NW 78th AVE., SUITE 214
MIAMI, FL 33015
P 305.392.1016 F 305.392.1019
CORP. ID # 0000266

This drawing is the property of GSLA Design and is not to be reproduced or copied in whole or part without written permission. It is not to be used on any other project and is to be returned on request. Contractor is responsible for verifying all site conditions prior to proceeding with work.

COPYRIGHT © 2020

THE MORRIS

1707 JEFFERSON AVENUE MIAMI BEACH, FL 33139

THE MORRIS

THE MORRIS

THE MORRIS

THE MORRIS

THE MORRIS

THE MORRIS

THE MORRIS

THE MORRIS

THE MORRIS

THE MORRIS

THE MORRIS

THE MORRIS

THE MORRIS



811

811

81



17670 NW 78th AVE., SUITE 214
M I A M I, F L 3 3 0 1 5
P 305.392.1016 F 305.392.1019
C O R P. I D # 0 0 0 0 2 6 6

This drawing is the property of GS&A Design and is not to be reproduced or copied in whole or part without written permission. It is not to be used on any other project and is to be returned on request. Contractor is responsible for verifying all site conditions prior to proceeding with work.

C O P Y R I G H T © 2 0 2 0

THE MORRIS
1707 JEFFERSON AVENUE, MIAMI BEACH, FL 33139

[illegible]

REV.		
DRB SUBMITTAL		

TITLE

PLANTING
NOTES, SPECS,
AND DETAILS

Ken Gardner
Kiehl Semler

DATE	12.12.202
------	-----------

SCALE as note

SHEET LA3.0



PERMALOC CORPORATION
13505 BARRY ST
HOLLAND, MI 49424
TOLL FREE: 1-800-356-9660
PHONE: (616) 399-9600
FAX: (616) 399-9770
www.permaloc.com

☒ SELECT DESIRED SIZE:

☒ 1/8" X 4" (3.2 MM X 102 MM), 0.050" (1.27 MM) THICK
WITH 0.2" (5.1 MM) EXPOSED TOP LIP

☒ SELECT DESIRED FINISH:

☒ MF - MILL FINISH-NATURAL ALUMINUM
☐ BL - BLACK DURAFLEX-MEETS AAMA 2605
☐ GR - GREEN DURAFLEX-MEETS AAMA 2605
☐ BR - BRONZE DURAFLEX-MEETS AAMA 2605

NOTES:

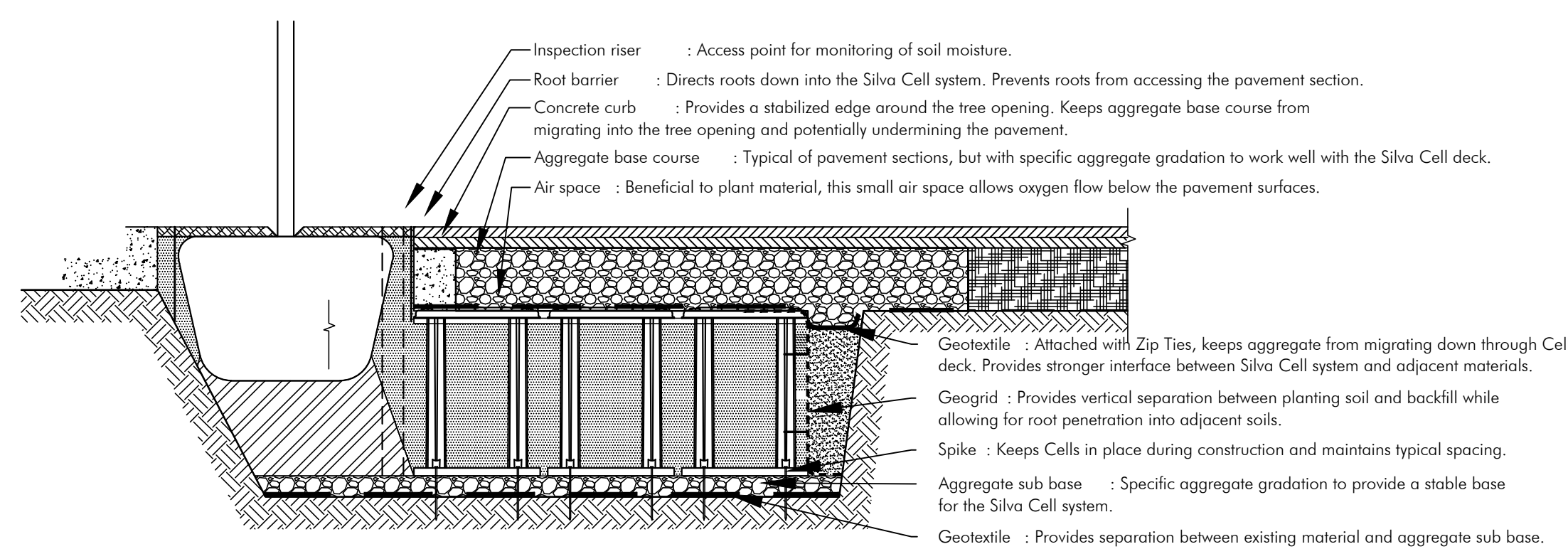
- NOTES:
1. ALL PERMANENT MANUFACTURER'S "INSTALLATION GUIDELINES".
 2. 8" (204.4 MM) SECTIONS TO INCLUDE (3) 12" (305 MM) ALUMINUM STAKES.
 3. 16" (408.8 MM) SECTIONS TO INCLUDE (5) 12" (305 MM) ALUMINUM STAKES.
 4. CORNERS - CUT BASE OF EDGING UP HALFWAY AND FORM A CONTINUOUS CORNER.
 5. PERMALOC PROSLIDE AS MANUFACTURED BY PERMALOC CORPORATION.
 6. DO NOT SCALE DRAWING.
- THIS DRAWING IS INTENDED FOR USE BY ARCHITECTS, ENGINEERS, CONTRACTORS, CONSULTANTS & DESIGN PROFESSIONALS FOR PLANNING PURPOSES ONLY. THIS DRAWING MAY NOT BE USED FOR CONSTRUCTION. ALL INFORMATION CONTAINED HEREIN WAS CURRENT AT THE TIME OF THE PREPAREMENT BUT MUST BE REVIEWED AND APPROVED BY THE PROJECT MANUFACTURER TO BE CONSIDERED ACCURATE.
- CONTRACTORS NOTE: FOR PRODUCT AND COMPANY INFORMATION VISIT www.permaloc.com/info AND ENTER REFERENCE NUMBER 006-041.

006-041

PROTECTED BY COPYRIGHT ©2014 CADDETAILS.COM LTD.

REVISION DATE 11/25/2014

CADdetails.com



SILVA CELL2 INSTALLATION DETAIL

N.T.S