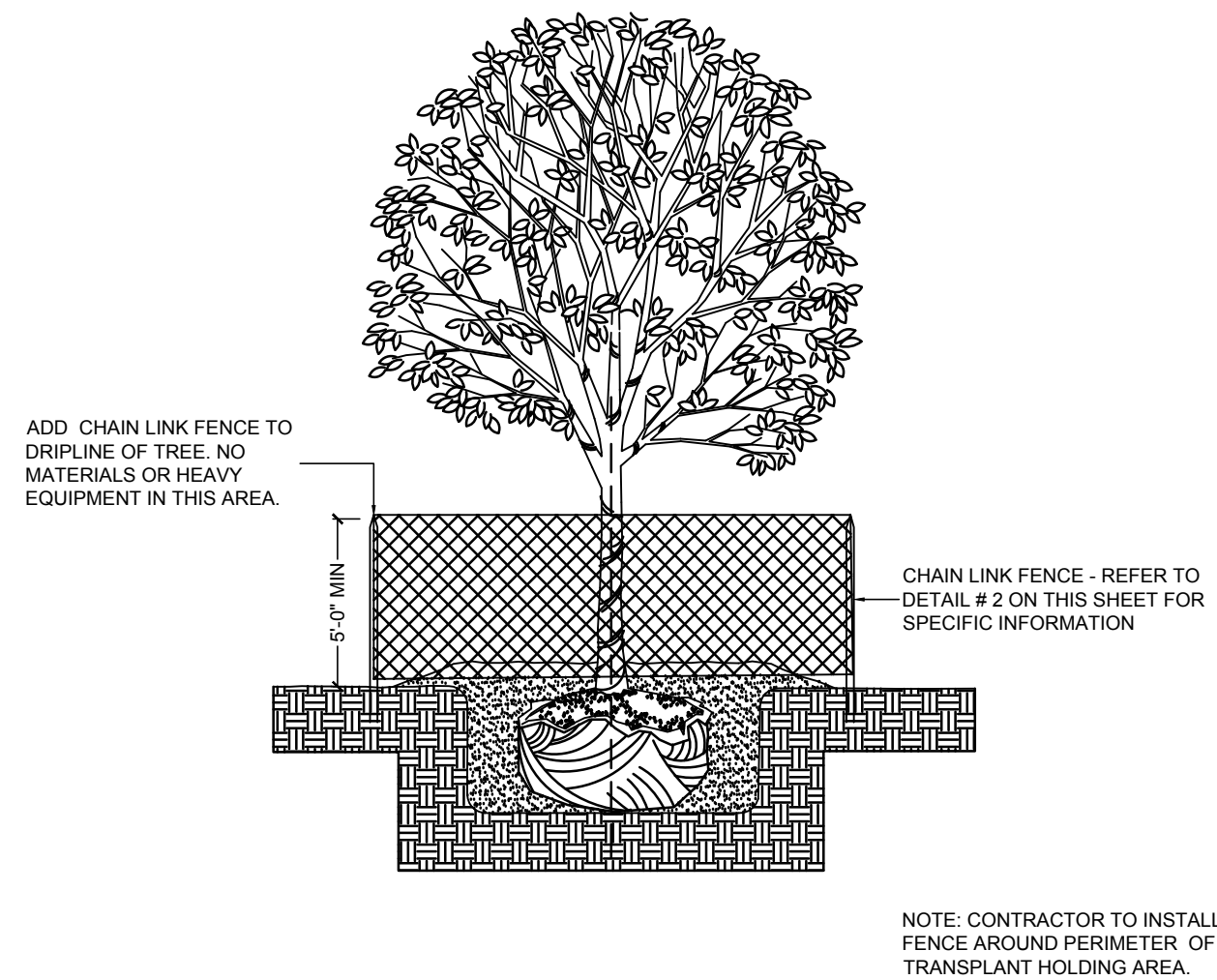
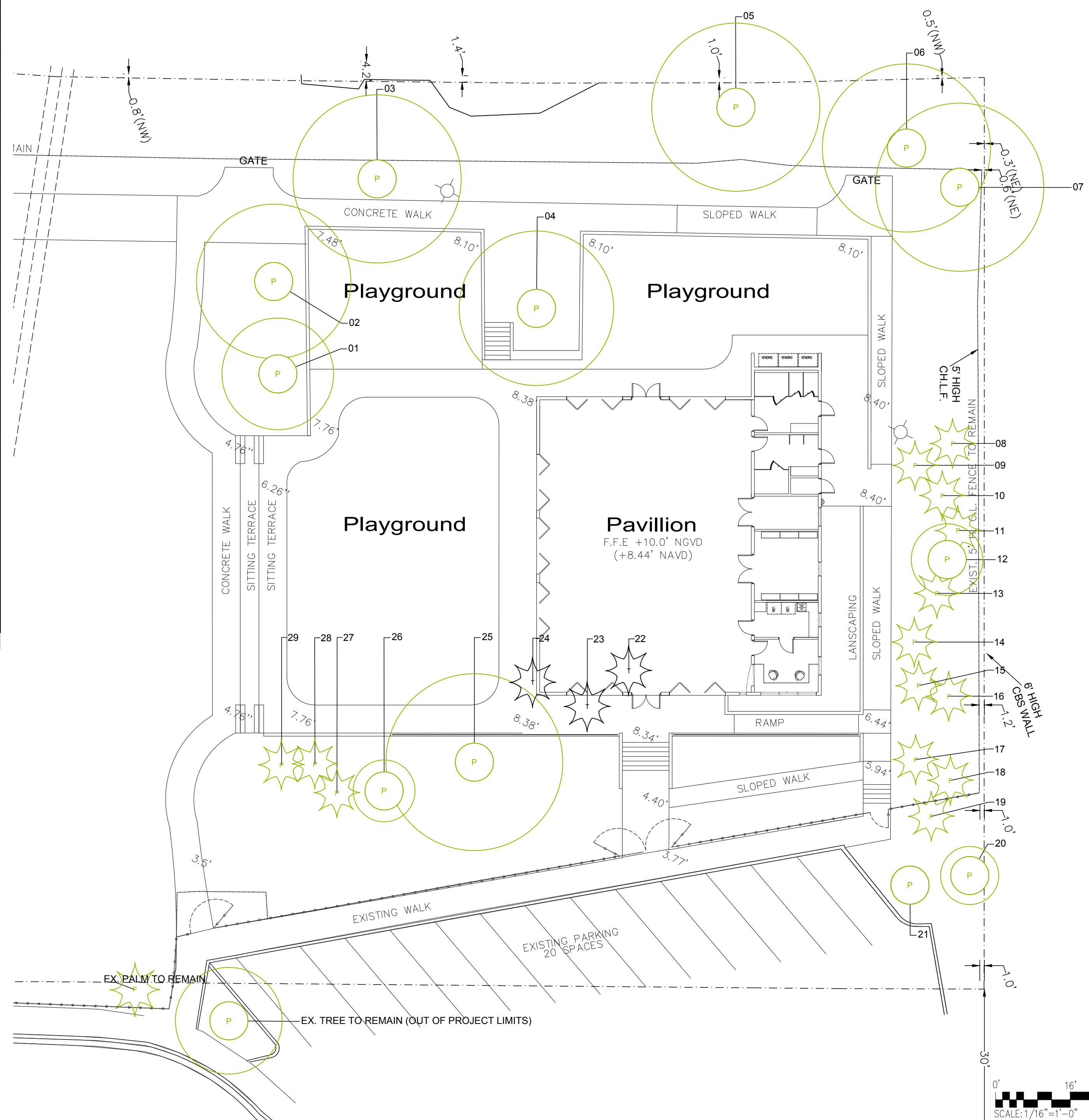


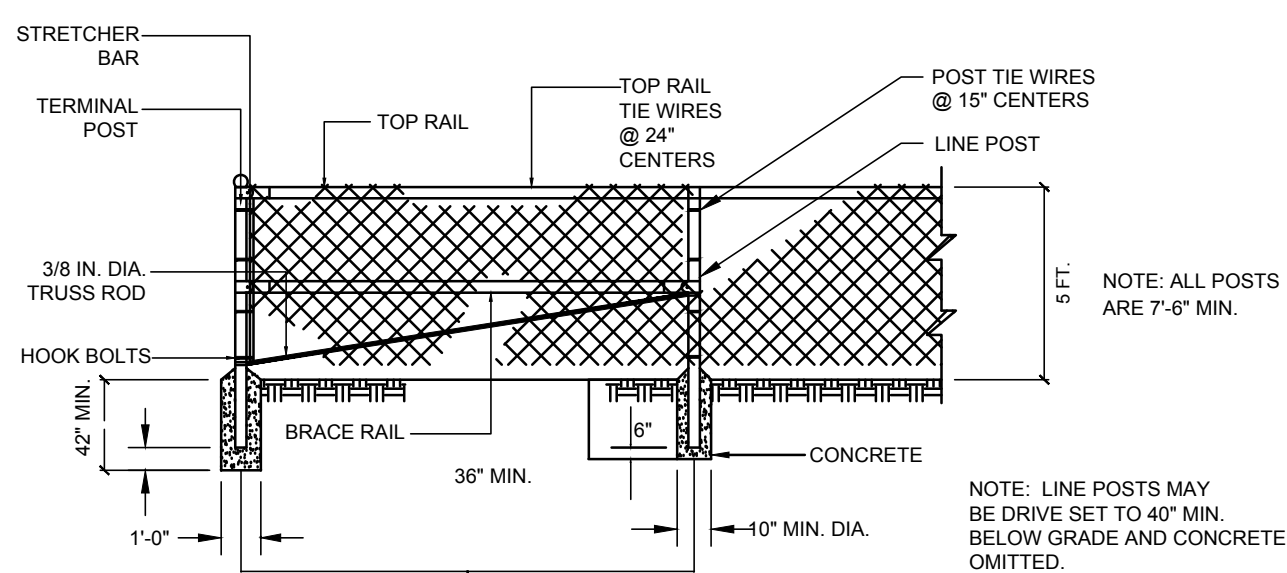
SAVINO & MILLER DESIGN STUDIO

MUSS PARK

TABLE #	QNTY.	BOTANICAL NAME	COMMON NAME	CONDITION	PRESERVE	TRANSPLANT	REMOVE	TRUNK DBH (IN)	ROOTBALL DIA.	SIZE OF HOLE DIA.	ROOT PRUNING TIME
1	1	<i>Conocarpus erectus</i>	Green Buttonwood		1			25			
2	1	<i>Bucida buceras</i>	Black Olive		1			25			
3	1	<i>Delonix regia</i>	Royal Poinciana		1			19			
4	1	<i>Swietenia mahagoni</i>	Mahogany		1			20			
5	1	<i>Avicennia sp.</i>	Mangrove		1						
6	1	<i>Pongamia pinnata</i>	Pongam		1			36			
7	1	Unknown tree			1			24			
8	1	<i>Sabal palmetto</i>	Cabbage Palm		1			12			
9	1	<i>Sabal palmetto</i>	Cabbage Palm		1			12			
10	1	<i>Sabal palmetto</i>	Cabbage Palm		1			12			
11	1	<i>Sabal palmetto</i>	Cabbage Palm		1			12			
12	1	<i>Araucaria heterophylla</i>	Norfolk Island Pine		1			24			
13	1	<i>Sabal palmetto</i>	Cabbage Palm		1			12			
14	1	<i>Sabal palmetto</i>	Cabbage Palm		1			12			
15	1	<i>Sabal palmetto</i>	Cabbage Palm		1			12			
16	1	<i>Sabal palmetto</i>	Cabbage Palm		1			12			
17	1	<i>Sabal palmetto</i>	Cabbage Palm		1			12			
18	1	<i>Sabal palmetto</i>	Cabbage Palm		1			12			
19	1	<i>Sabal palmetto</i>	Cabbage Palm		1			12			
20	1	Unknown tree			1			36			
21	1	<i>Coccoloba diversifolia</i>	Pigeon Plum		1						
22	1	<i>Sabal palmetto</i>	Cabbage Palm			1		12	4'	6'	2 WEEKS
23	1	<i>Sabal palmetto</i>	Cabbage Palm			1		12	4'	6'	2 WEEKS
24	1	<i>Sabal palmetto</i>	Cabbage Palm			1		12	4'	6'	2 WEEKS
25	1	<i>Bucida buceras</i>	Black Olive		1						
26	1	<i>Tabebuia chrysantha</i>	Golden Trumpet Tree		1						
27	1	<i>Sabal palmetto</i>	Cabbage Palm		1						
28	1	<i>Sabal palmetto</i>	Cabbage Palm		1						
29	1	<i>Sabal palmetto</i>	Cabbage Palm		1						
29	TOTAL OF TREES				26	3	0				



1 TREE PROTECTION DETAIL
NTS

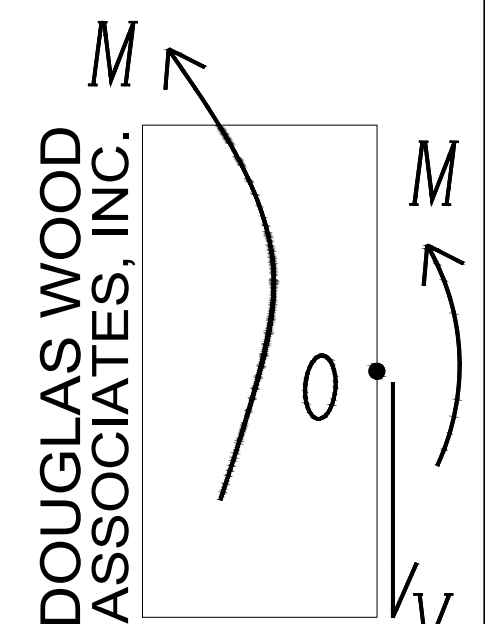


2 CHAIN LINK DETAIL
NTS

REVISIONS BY

LOCATION:
4400 CHASE AVENUE
MIAMI BEACH,
FLORIDA 33139

PROJECT TEAM:
DOUGLAS WOOD ASSOCIATES, INC.



STRUCTURAL ENGINEERS
DOUGLAS WOOD ASSOCIATES, INC.
6040 NW 7TH STREET
SUITE 820
MIAMI, FLORIDA 33126
PH. 305 461-3450
EB 6353
info@douglaswood.biz
www.douglaswood.biz
OWNER

CITY OF MIAMI BEACH
1700 CONVENTION CENTER DRIVE
MIAMI, FLORIDA 33139

ARCHITECTS
FERGUSON GLASGOW SCHUSTER SOTO, INC.
901 PONCE DE LEON BOULEVARD
SUITE 304
CORAL GABLES, FLORIDA 33134

LANDSCAPE ARCHITECTS
SAVINO & MILLER DESIGN STUDIO
12345 NE 6TH AVENUE A
NORTH MIAMI, FLORIDA 33161

MEP
EMTEC, CORP.
250 CATALONIA AVENUE
SUITE 502
CORAL GABLES, FLORIDA 33134

CIVIL ENGINEERS
BISCAYNE ENGINEERING COMPANY, INC.
529 W. FLAGLER STREET
MIAMI, FLORIDA 33130

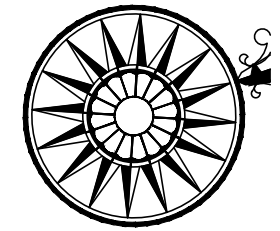
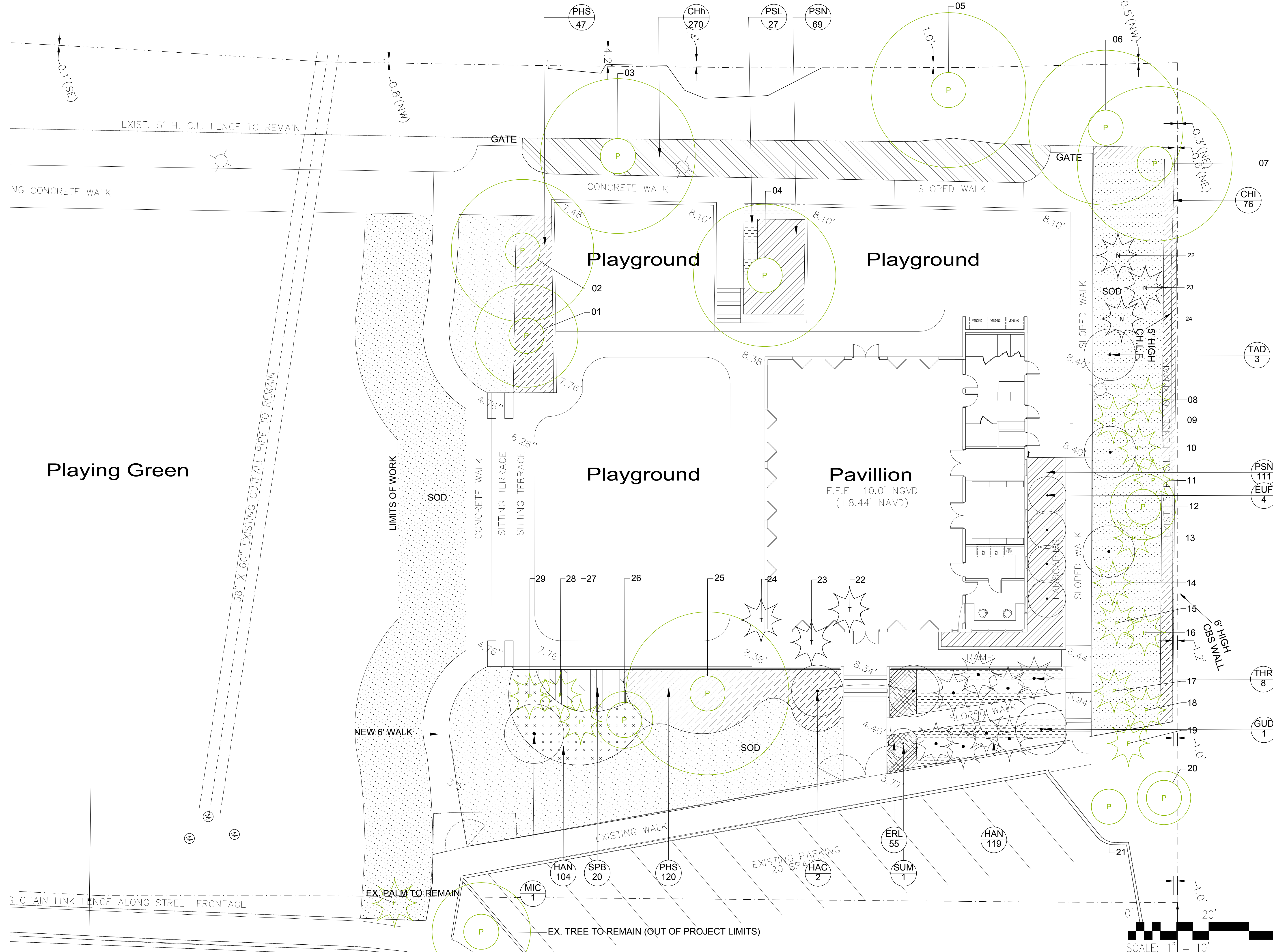
LEED CONSULTANT
SEBASTIAN ELERT ARCHITECTURE
9840 SW 85TH STREET
SUITE 304
MIAMI, FLORIDA 33173

GEOTECHNICAL ENGINEER
ARDAMAN & ASSOCIATES
2608 W. 84TH STREET
HALEAH, FLORIDA 33016

Project:
PAVILION, MUSS PARK
MIAMI BEACH, FLORIDA
Sheet Title: Tree Management Plan

Date: 02/12/2016
Scale: AS SHOWN
Drawn by: JJ
Job: 15114
Sheet

LT-1
Of 1



REVISIONS	BY

LOCATION:
4400 CHASE AVENUE
MIAMI BEACH,
FLORIDA 33139

SEAL:
BARRY MILLER
 LANDSCAPE ARCHITECT

PROJECT TEAM:
DOUGLAS WOOD ASSOCIATES, INC.

STRUCTURAL ENGINEERS
 DOUGLAS WOOD ASSOCIATES, INC.
 5040 NW 7TH STREET
 SUITE 820
 MIAMI, FLORIDA 33126
 PH. 305 461-3450
 EB 6353
 rtdw@douglaswood.biz
 www.douglaswood.biz

OWNER:
 CITY OF MIAMI BEACH
 1700 CONVENTION CENTER DRIVE
 MIAMI, FLORIDA 33139

ARCHITECTS
 FERGUSON GLASSOW SCHUSTER SOTO, INC.
 981 PONCE DE LEON BOULEVARD
 SUITE 304
 CORAL GABLES, FLORIDA 33134

LANDSCAPE ARCHITECTS
 SAVINO & MILLER DESIGN STUDIO
 12345 NE 6TH AVENUE A
 NORTH MIAMI, FLORIDA 33161

MEP
 EMTEC, CORP.
 250 CATALONIA AVENUE
 SUITE 502
 CORAL GABLES, FLORIDA 33134

CIVIL ENGINEERS
 BISCAYNE ENGINEERING COMPANY, INC.
 529 W. FLAGLER STREET
 MIAMI, FLORIDA 33130

LEED CONSULTANT
 SEBASTIAN ELERT ARCHITECTURE
 9840 SW 85TH STREET
 SUITE 304
 MIAMI, FLORIDA 33173

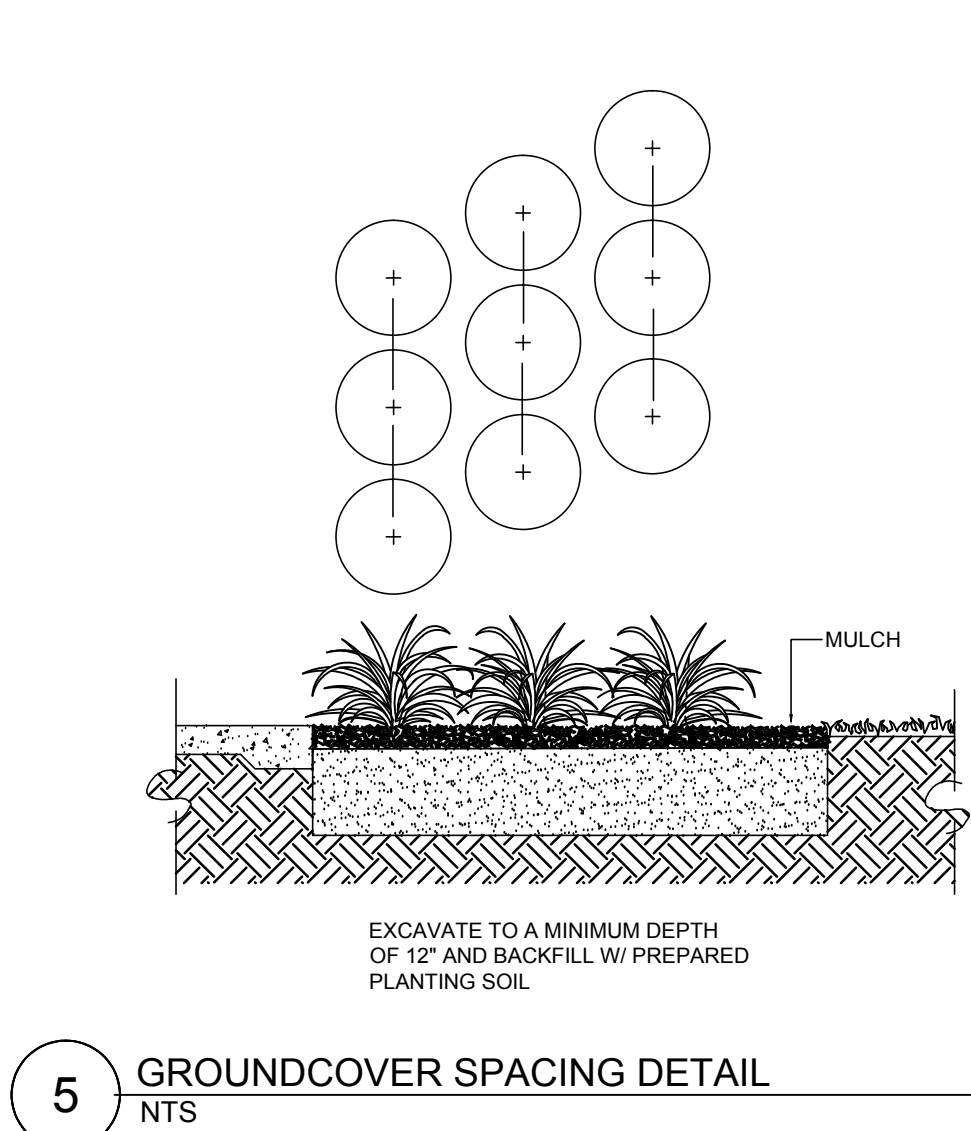
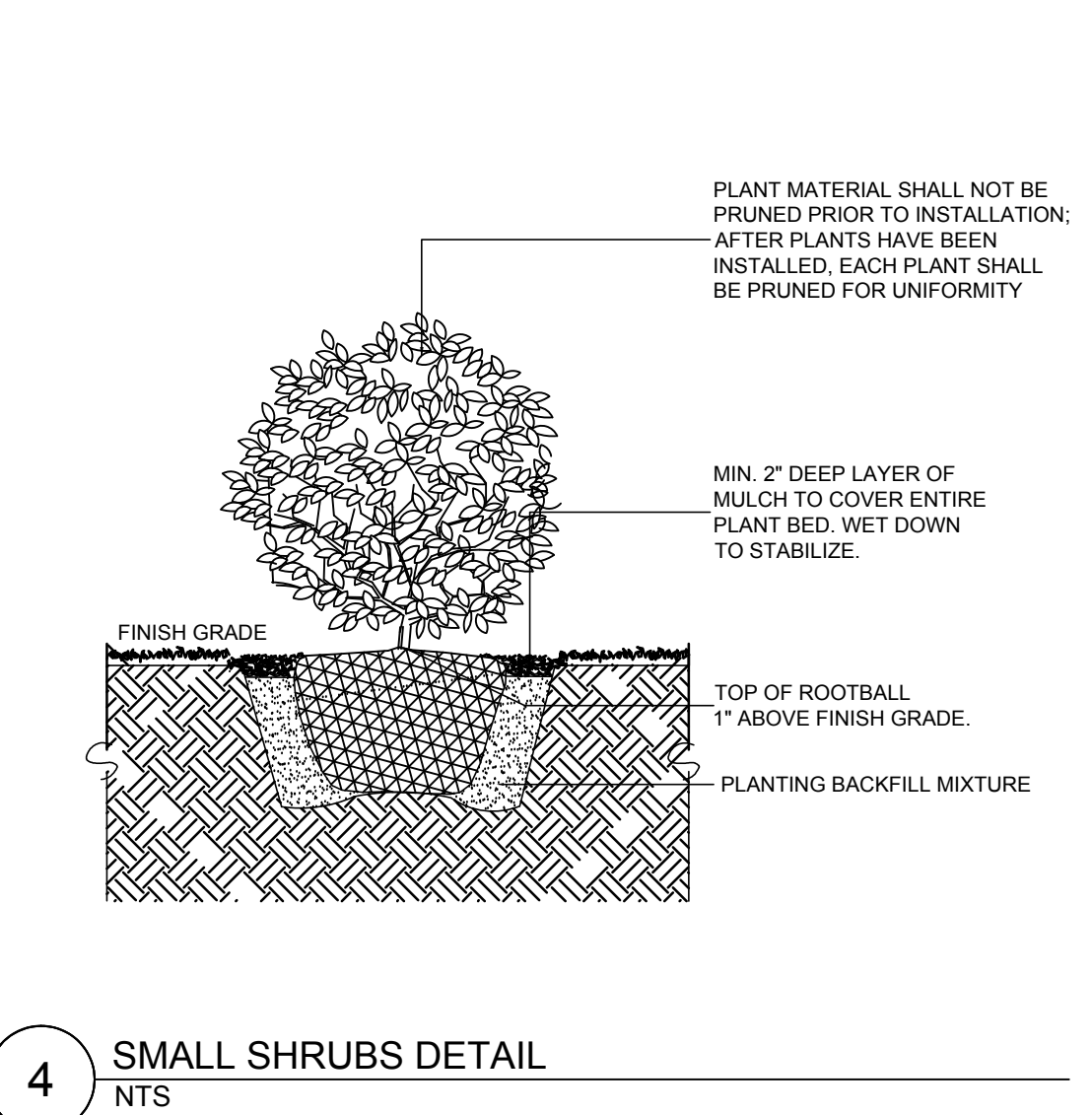
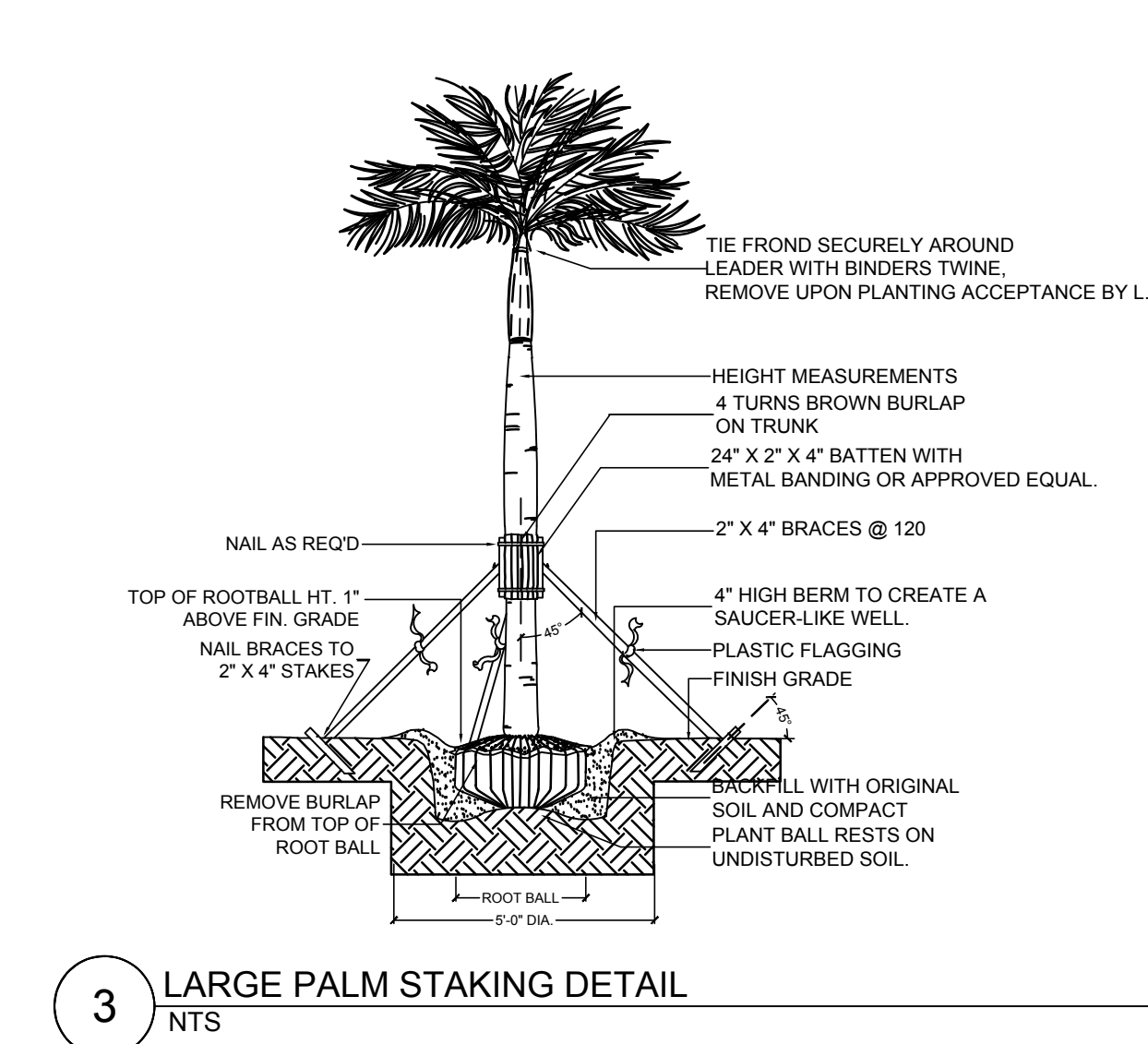
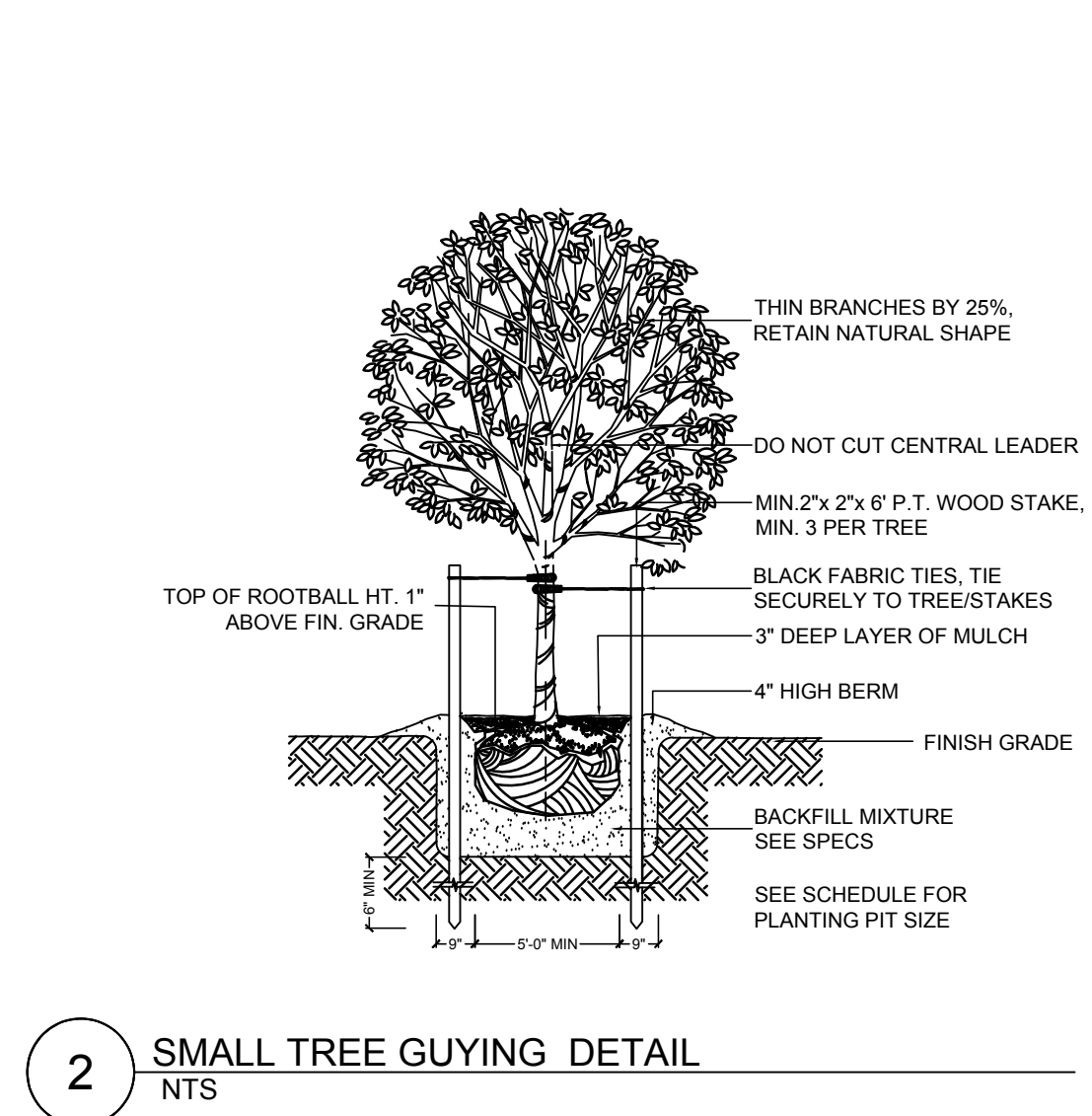
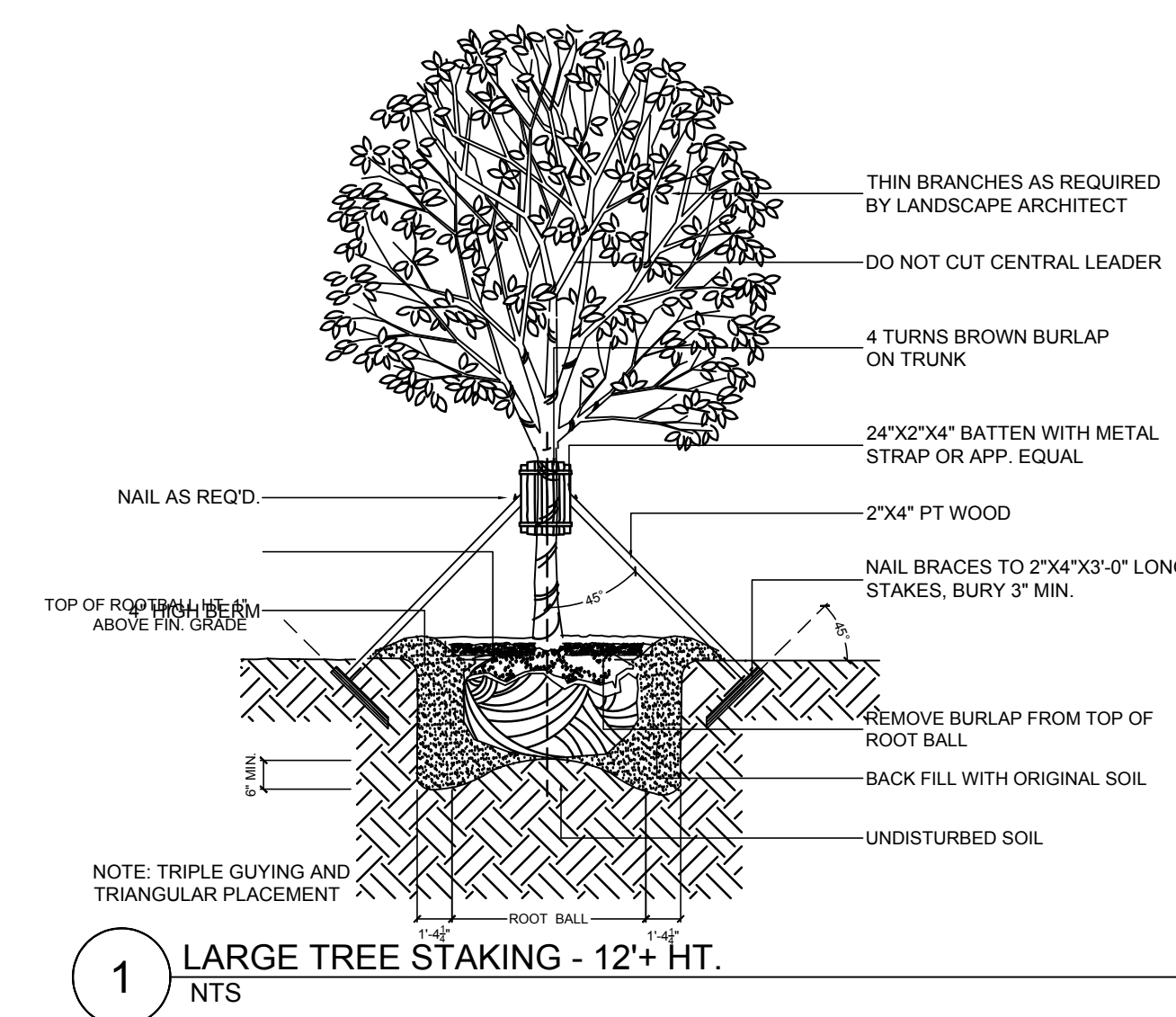
GEOTECHNICAL ENGINEER
 ARDAMAN & ASSOCIATES
 2608 W. 84TH STREET
 HIALEAH, FLORIDA 33016

Project:
PAVILLION, MUSS PARK
MIAMI BEACH, FLORIDA

Sheet Title: Schematic Landscape Plan

Date: XX/XX/XXXX
 Scale: AS SHOWN
 Drawn by: JJ
 Job: 15114
 Sheet
LP-1
 Of 1

PLANT SCHEDULE					
KEY	QTY.	BOTANICAL/COMMON NAME	SIZE	NATIVE STATUS	DROUGHT TOLERANCE
TREES					
EUF	4	Eugenia foetida Spanish Stopper	10'-12' ht., 2" cal., 4'-5' sp., 25 gal. 8' O.C.	Native	Tolerant
GUD	1	Guapira discolor Bolly	10'-12' ht., 2" cal., 4'-5' sp., 25 gal.	Native	Tolerant
HAC	2	Hamelia Cuprea Bahama Firebush	6'-7' ht., x 4'-5' sp., 1"-1.5", 25 gal.		Tolerant
MIC	1	Michelia champaca Joy Perfume Tree	10'-12' Ht x 5'-6' Spr. 2" cal., 50 gal.		
SUM	1	Suriana maritima Bay Cedar	4'-5' ht., 1" cal., 15 gal.	Native	Tolerant
TAD	3	Taxodium distichum / Bald Cypress	10'-12' Ht x 5'-6' Spr, 2" cal., 50 gal.	Native	Tolerant
	12	TOTAL			
PALMS					
THR	8	Thrinax radiata / Thrinax radiata /	6' -12' OA Ht., B&B, Staggered	Native	Tolerant
SHRUBS AND GRASSES					
CHI	76	Chrysobalanus icaco / Redtip cocoplum	18" - 24" Ht., 3 gal, 24" OC	Native	Tolerant
HAN	244	Hamelia nodosa / Dwarf Firebush	20" - 24" OA, 3 gal., 24" OC		Tolerant
PSL	27	Psychotria ligustrifolia Dwarf Wild Coffee/Bahama Wild Coffee	18"-24" OA, 3 gal. , 24" OC	Native	Tolerant
PSN	178	Psychotria nervosa / Wild Coffee	24"-30" Ht., Full, 3 gal , 24" OC	Native	Tolerant
PHS	109	Philodendron selloum / Split Leaf Philodendron	30"-36" OA, 3 gal., 36" OC		
SPB	20	Spartina bakeri / Sand Cordgrass	18"-24" Ht., Full, 3 gal., 36" OC	Native	Tolerant
	654	TOTAL			
GROUNDCOVERS					
ERL	57	Ernodea litoralis Beach Creeper	12"-18" OA, 3 gal., 18" OC	Native	Tolerant
CHh	270	Chrysobalanus icaco 'Horizontalis' Horizontal Cocoplum	18"-24" OA, 3 gal., Full, 24" OC		Tolerant
SOD					
SOD	6,715	Stenotaphrum secundatum 'Floratum' St. Augustine 'Floratum'	solid sod, no weeds (or species approved by City)		



REVISIONS BY

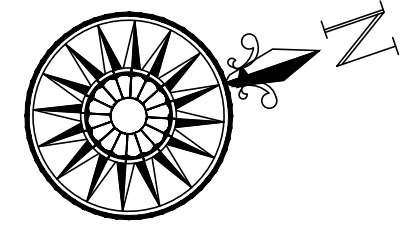
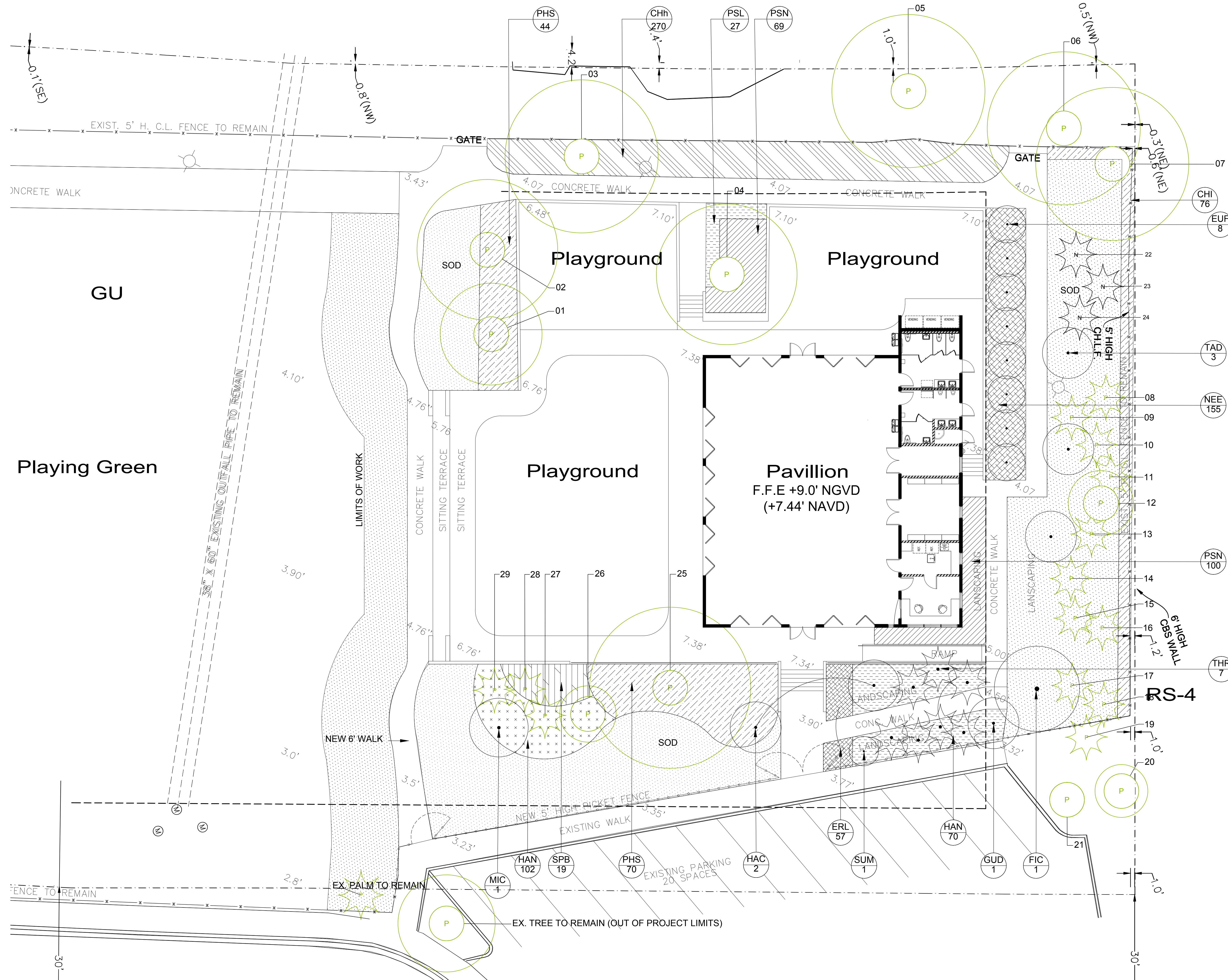
LOCATION:
4400 CHASE AVENUE
MIAMI BEACH,
FLORIDA 33139

SEAL:
DOUGLAS WOOD ASSOCIATES, INC. M
PROJECT TEAM:

STRUCTURAL ENGINEERS
DOUGLAS WOOD ASSOCIATES, INC.
5040 NW 7TH STREET
SUITE 820
MIAMI, FLORIDA 33126
PH. 305 461-3450
EB 6353
fhdw@douglaswood.biz
www.douglaswood.biz
OWNER
CITY OF MIAMI BEACH
1700 CONVENTION CENTER DRIVE
MIAMI, FLORIDA 33139
ARCHITECTS
FERGUSON GLASGOW SCHUSTER SOTO, INC.
901 PONCE DE LEON BOULEVARD
SUITE 304
CORAL GABLES, FLORIDA 33134
LANDSCAPE ARCHITECTS
SAVINO & MILLER DESIGN STUDIO
12345 NE 6TH AVENUE A
NORTH MIAMI, FLORIDA 33161
MEP
EMTEC, CORP.
250 CATALONIA AVENUE
SUITE 502
CORAL GABLES, FLORIDA 33134
CIVIL ENGINEERS
BISCAYNE ENGINEERING COMPANY, INC.
529 W. FLAGLER STREET
MIAMI, FLORIDA 33130
LEED CONSULTANT
SEBASTIAN ELERT ARCHITECTURE
9840 SW 85TH STREET
SUITE 304
MIAMI, FLORIDA 33173
GEOTECHNICAL ENGINEER
ARDAMAN & ASSOCIATES
2608 W. 64TH STREET
HIALEAH, FLORIDA 33016

Project:
PAVILION MUSS PARK
MIAMI BEACH, FLORIDA
Sheet Title: Landscape Schedule & Details

Date: XX/XX/XXXX
Scale: AS SHOWN
Drawn by: JJ
Job: 15114
Sheet
LP-2
Of 1



REVISIONS	BY

LOCATION:
4400 CHASE AVENUE
MIAMI BEACH,
FLORIDA 33139

SEAL:
 BARRY MILLER
 LANDSCAPE ARCHITECT

PROJECT TEAM:
DOUGLAS WOOD ASSOCIATES, INC.
 STRUCTURAL ENGINEERS
 DOUGLAS WOOD ASSOCIATES, INC.
 5040 NW 7TH STREET
 SUITE 820
 MIAMI, FLORIDA 33126
 PH. 305 461-3450
 EB 6353
 rtdw@douglaswood.biz
 www.douglaswood.biz
 OWNER
 CITY OF MIAMI BEACH
 1700 CONVENTION CENTER DRIVE
 MIAMI, FLORIDA 33139
 ARCHITECTS
 FERGUSON GLASSOW SCHUSTER SOTO, INC.
 981 PONCE DE LEON BOULEVARD
 SUITE 304
 CORAL GABLES, FLORIDA 33134
 LANDSCAPE ARCHITECTS
 SAVINO & MILLER DESIGN STUDIO
 12345 NE 6TH AVENUE A
 NORTH MIAMI, FLORIDA 33161
 MEP
 EMTEC, CORP.
 250 CATALONIA AVENUE
 SUITE 502
 CORAL GABLES, FLORIDA 33134
 CIVIL ENGINEERS
 BISCAYNE ENGINEERING COMPANY, INC.
 529 W. FLAGLER STREET
 MIAMI, FLORIDA 33130
 LEED CONSULTANT
 SEBASTIAN ELERT ARCHITECTURE
 9840 SW 85TH STREET
 SUITE 304
 MIAMI, FLORIDA 33173
 GEOTECHNICAL ENGINEER
 ARDAMAN & ASSOCIATES
 2608 W. 84TH STREET
 HIALEAH, FLORIDA 33016

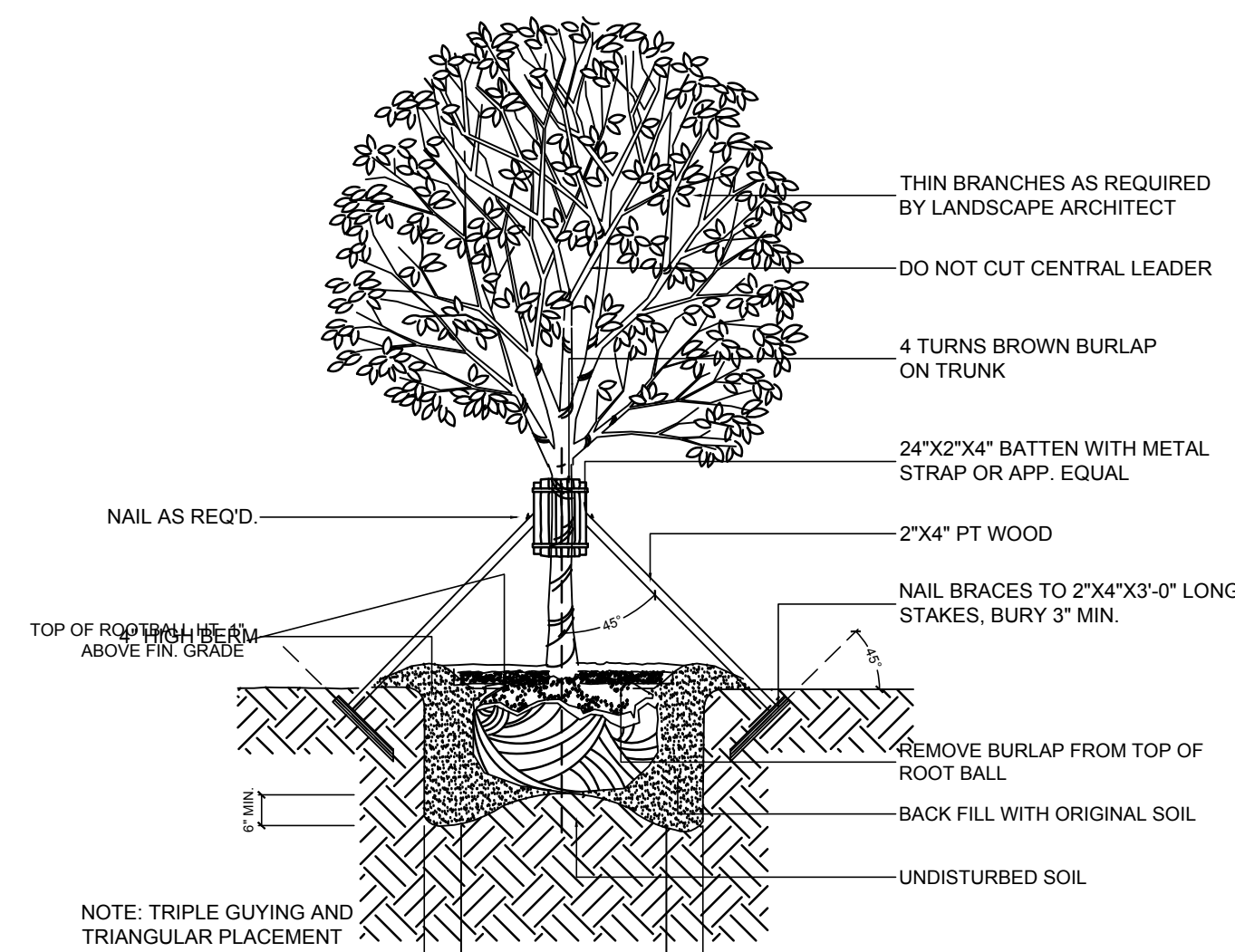
Project:
PAVILION MUSS PARK
MIAMI BEACH, FLORIDA

Sheet Title: Schematic Landscape Plan

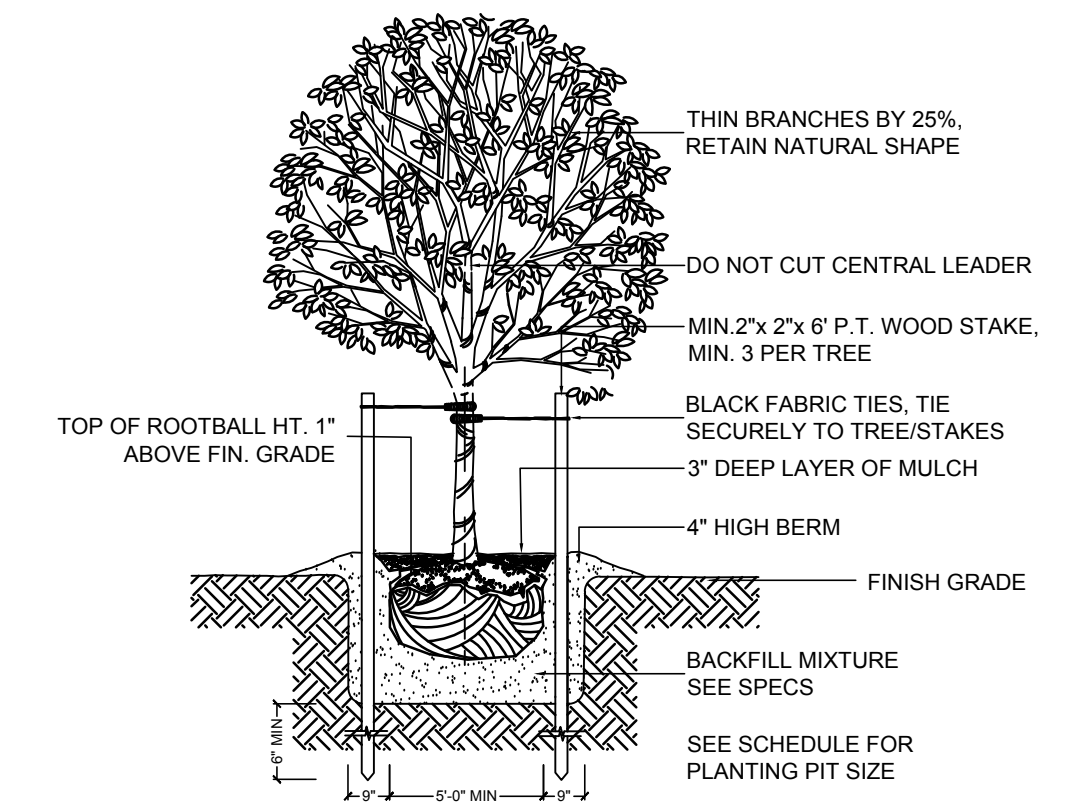
Date: 02/12/2016
 Scale: AS SHOWN
 Drawn by: JJ
 Job: 15114
 Sheet
LP-1
 Of 1

SCALE: 3/32" = 1'-0"

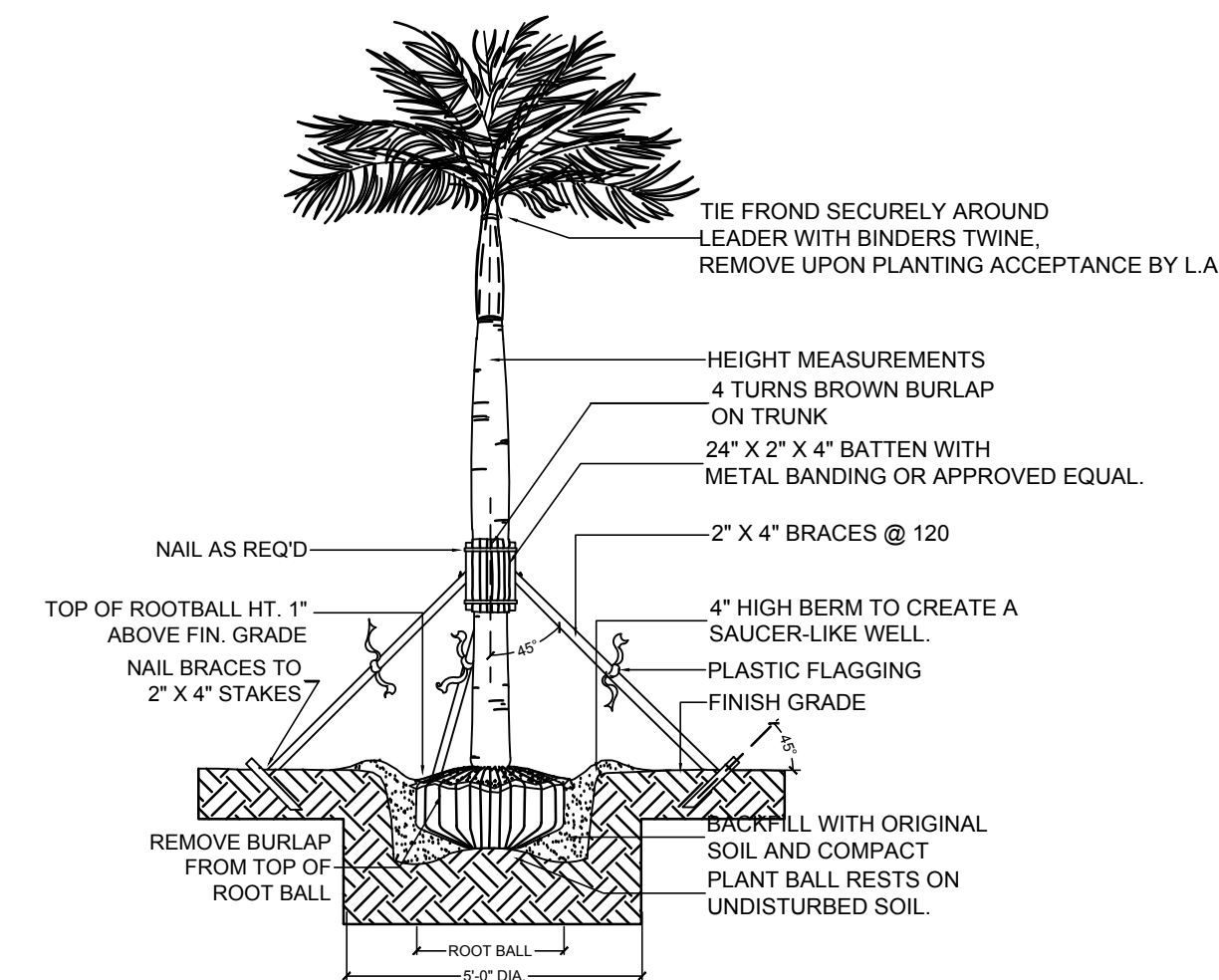
PLANT SCHEDULE					
KEY	QTY.	BOTANICAL/COMMON NAME	SIZE	NATIVE STATUS	DROUGHT TOLERANCE
TREES					
EUF	8	Eugenia foetida Spanish Stopper	10'-12' ht., 2" cal., 4'-5' sp., 25 gal. 8' O.C.	Native	Tolerant
FIC	1	Ficus citrifolia Short Leaf Fig	12'-14' Ht. x 7'-8' Spr., 3" Cal. B&B,	Native	
GUD	1	Guapira discolor Blolly	10'-12' ht., 2" cal., 4'-5' sp., 25 gal.	Native	Tolerant
HAC	2	Hamelia Cuprea Bahama Firebush	6'-7' ht., x 4'-5' sp., 1"-1.5", 25 gal.		Tolerant
MIC	1	Michelia champaca Joy Perfume Tree	10'-12' Ht. x 5'-6' Spr. 2" cal., 50 gal.		
SUM	1	Suriana maritima Bay Cedar	4'-5' ht., 1" cal., 15 gal.	Native	Tolerant
TAD	3	Taxodium distichum / Bald Cypress	10'-12' Ht. x 5'-6' Spr, 2" cal., 50 gal.	Native	Tolerant
	17	TOTAL			
PALMS					
THR	8	Thrinax radiata / Thrinax radiata /	6' -12' OA Ht., B&B, Staggered	Native	Tolerant
SHRUBS AND GRASSES					
CHI	76	Chrysobalanus icaco / Redtip cocoplum	18" - 24" Ht., 3 gal, 24" OC	Native	Tolerant
HAN	172	Hamelia nodosa / Dwarf Firebush	20" - 24" OA, 3 gal., 24" OC		Tolerant
PSL	27	Psychotria ligustrifolia Dwarf Wild Coffee/Bahama Wild Coffee	18"-24" OA, 3 gal. , 24" OC	Native	Tolerant
PSN	169	Psychotria nervosa / Wild Coffee	24"-30" Ht., Full, 3 gal , 24" OC	Native	Tolerant
PHS	114	Philodendron selloum / Split Leaf Philodendron	30"-36" OA, 3 gal., 36" OC		
SPB	19	Spartina bakeri / Sand Cordgrass	18"-24" Ht., Full, 3 gal., 36" OC	Native	Tolerant
	577	TOTAL			
GROUNDCOVERS					
ERL	57	Ernodea litoralis Beach Creeper	12"-18" OA, 3 gal., 18" OC	Native	Tolerant
CHh	270	Chrysobalanus icaco 'Horizontalis' Horizontal Cocoplum	18"-24" OA, 3 gal., Full, 24" OC		Tolerant
NEE	155	Nephrolepis exaltata / Boston Fern	18"-24" OA, 3 gal., Full, 24" OC	Native	
	482	TOTAL			
SOD					
SOD	7436 SF	Stenotaphrum secundatum 'Floratam' St. Augustine 'Floratam'	solid sod, no weeds (or species approved by City)		



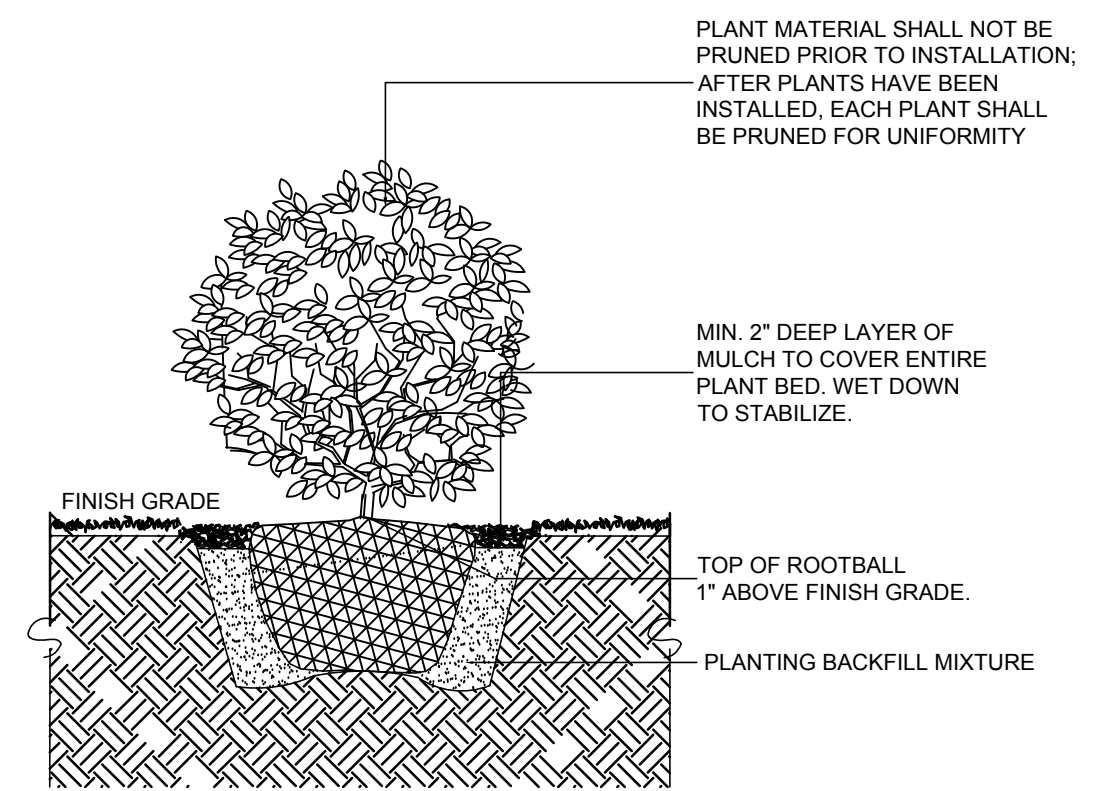
1 LARGE TREE STAKING - 12'+ HT. NTS



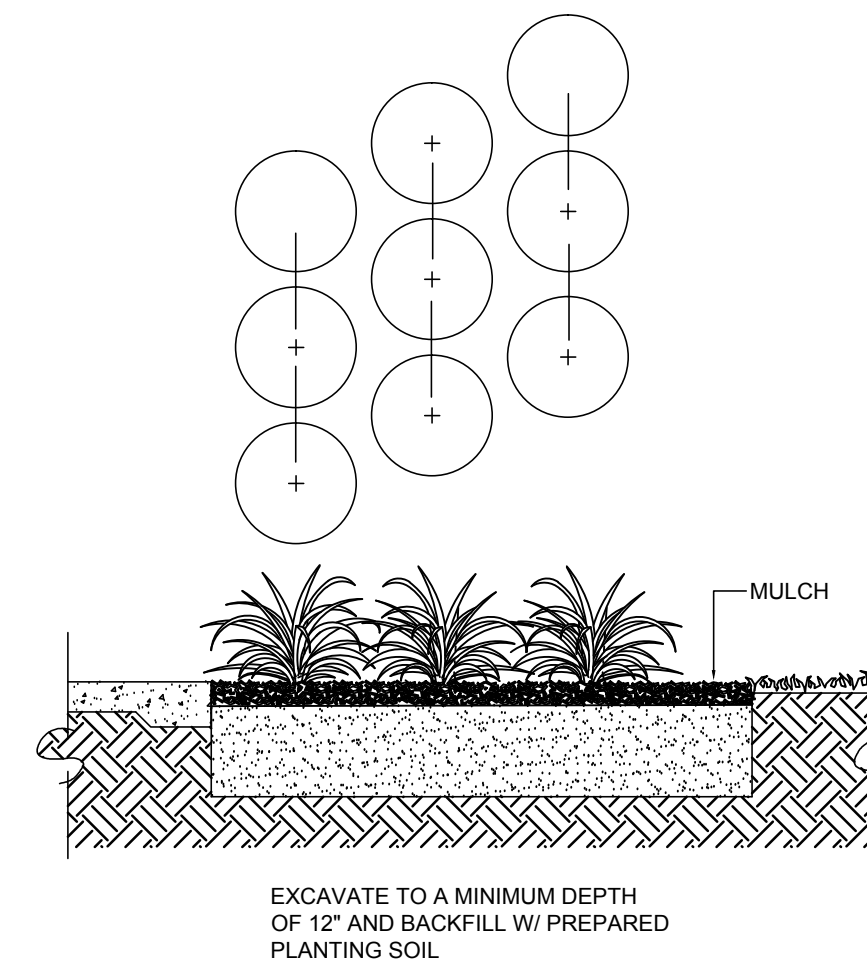
2 SMALL TREE GUYING DETAIL NTS



3 LARGE PALM STAKING DETAIL NTS



4 SMALL SHRUBS DETAIL NTS



5 GROUNDCOVER SPACING DETAIL NTS

REVISIONS BY

LOCATION: 4400 CHASE AVENUE, MIAMI BEACH, FLORIDA 33139

PROJECT TEAM: DOUGLAS WOOD ASSOCIATES, INC. (M), STRUCTURAL ENGINEERS DOUGLAS WOOD ASSOCIATES, INC. 5040 NW 7TH STREET SUITE 820 MIAMI, FLORIDA 33126 PH. 305 461-3450 EB 6353 info@douglaswood.biz www.douglaswood.biz OWNER

CITY OF MIAMI BEACH 1700 CONVENTION CENTER DRIVE MIAMI, FLORIDA 33139 ARCHITECTS FERGUSON GLASGOW SCHUSTER SOTO, INC. 901 PONCE DE LEON BOULEVARD SUITE 304 CORAL GABLES, FLORIDA 33134 LANDSCAPE ARCHITECTS SAVINO & MILLER DESIGN STUDIO 12345 NE 6TH AVENUE A NORTH MIAMI, FLORIDA 33161 MEP EMT-TEC, CORP. 250 CATALONIA AVENUE SUITE 502 CORAL GABLES, FLORIDA 33134 CIVIL ENGINEERS BISCAYNE ENGINEERING COMPANY, INC. 529 W. FLAGLER STREET MIAMI, FLORIDA 33130 LEED CONSULTANT SEBASTIAN EILERT ARCHITECTURE 9840 SW 85TH STREET SUITE 304 MIAMI, FLORIDA 33173 GEOTECHNICAL ENGINEER ARDAMAN & ASSOCIATES 2608 W. 84TH STREET HIALEAH, FLORIDA 33016

Project: PAVILION, MUSS PARK MIAMI BEACH, FLORIDA

Sheet Title: Landscape Schedule & Details

Date: 02/12/2016

Scale: AS SHOWN

Drawn by: JJ

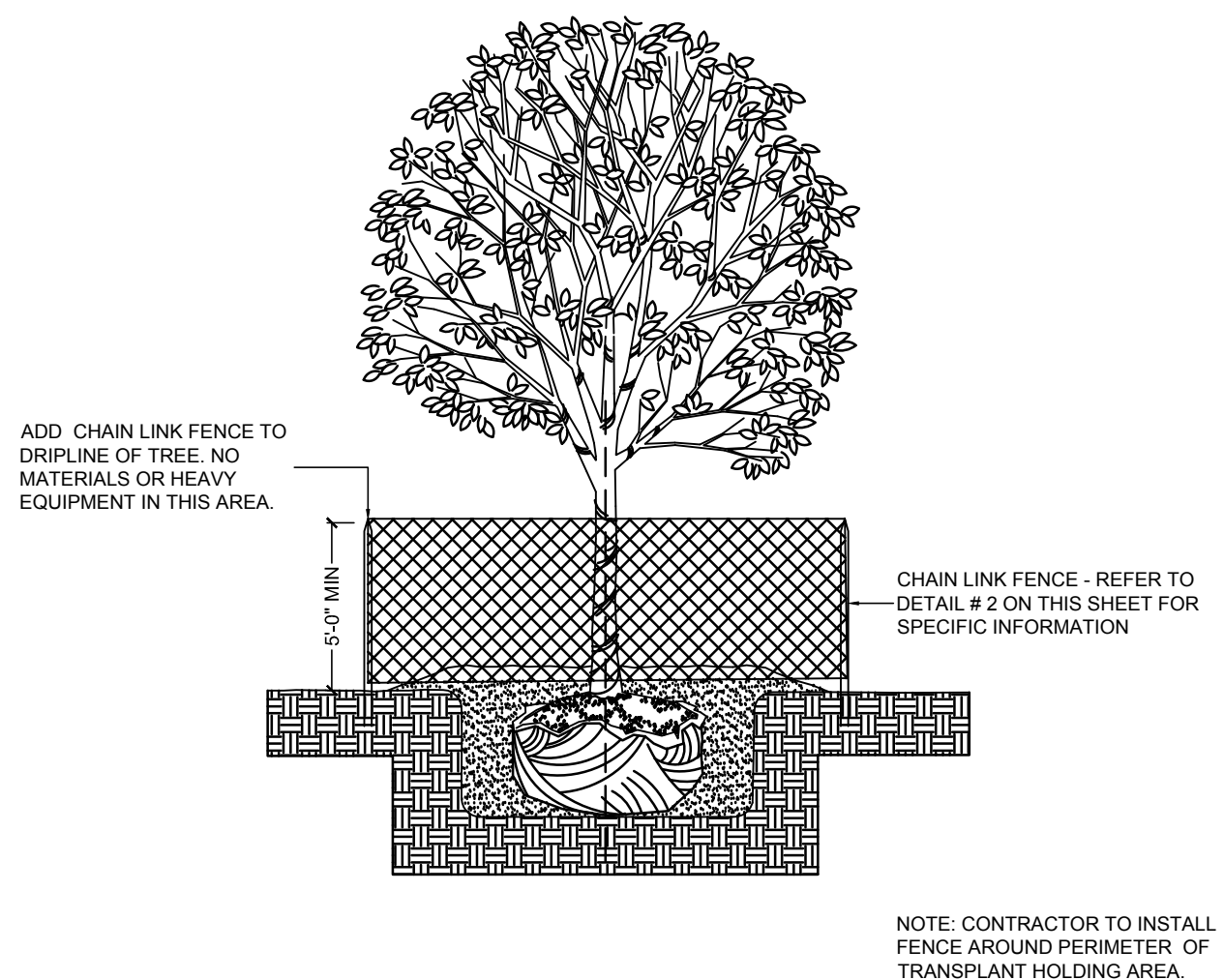
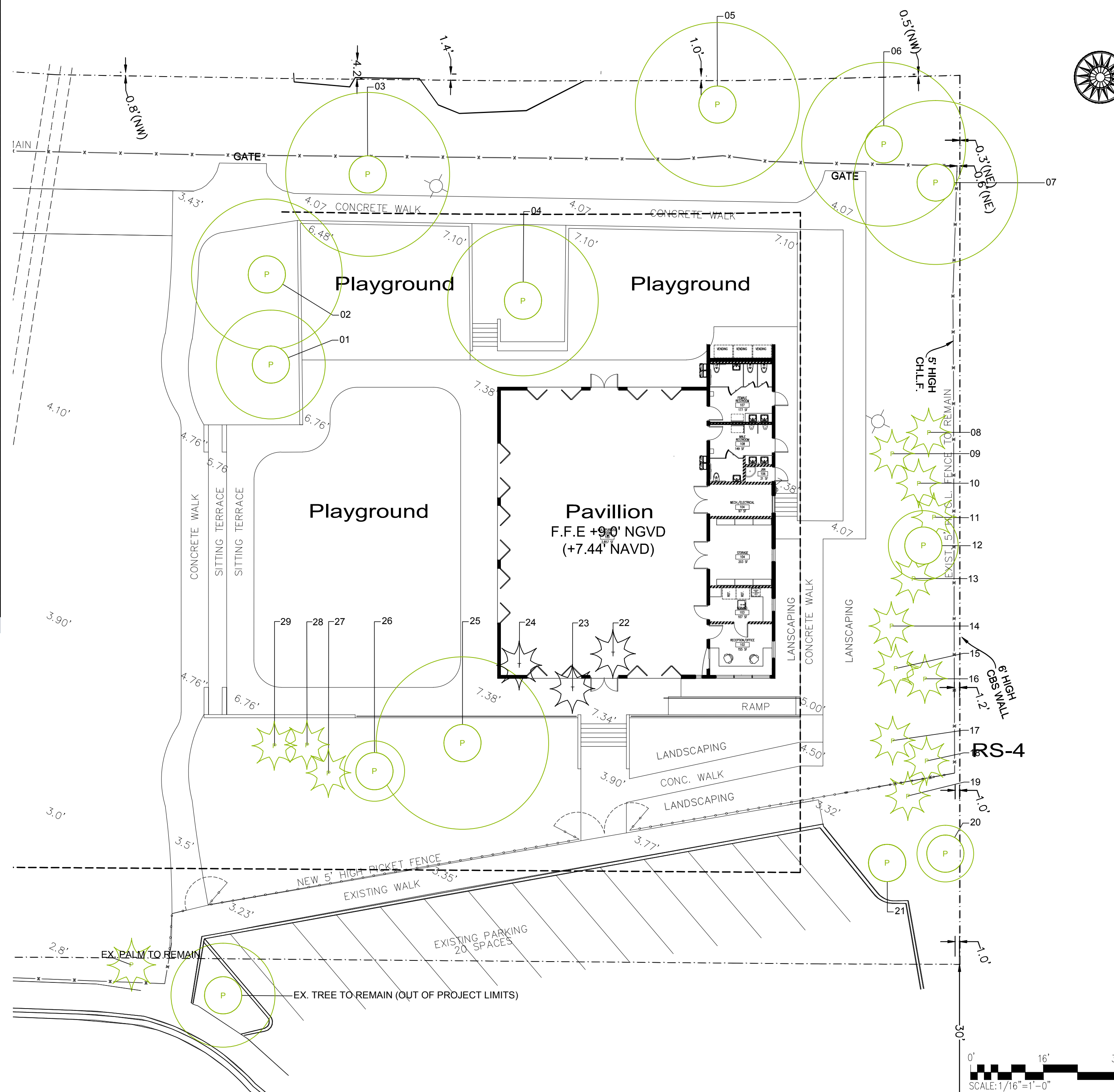
Job: 15114

Sheet LP-2 Of 1

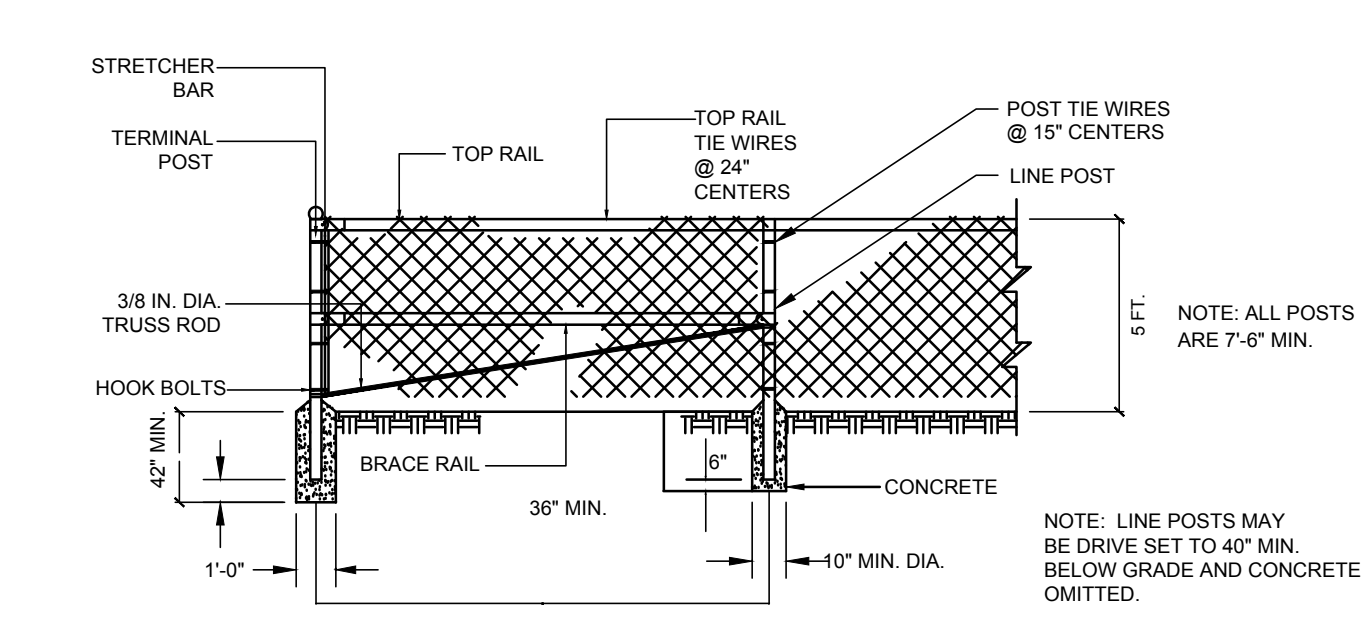
SAVINO & MILLER DESIGN STUDIO

MUSS PARK

TABLE #	QNTY.	BOTANICAL NAME	COMMON NAME	CONDITION	PRESERVE	TRANSPLANT	REMOVE	TRUNK DBH (IN)	ROOTBALL DIA.	SIZE OF HOLE DIA.	ROOT PRUNING TIME
1	1	<i>Conocarpus erectus</i>	Green Buttonwood		1			25			
2	1	<i>Bucida buceras</i>	Black Olive		1			25			
3	1	<i>Delonix regia</i>	Royal Poinciana		1			19			
4	1	<i>Swietenia mahagoni</i>	Mahogany		1			20			
5	1	<i>Avicennia sp.</i>	Mangrove		1						
6	1	<i>Pongamia pinnata</i>	Pongam		1			36			
7	1	Unknown tree			1			24			
8	1	<i>Sabal palmetto</i>	Cabbage Palm		1			12			
9	1	<i>Sabal palmetto</i>	Cabbage Palm		1			12			
10	1	<i>Sabal palmetto</i>	Cabbage Palm		1			12			
11	1	<i>Sabal palmetto</i>	Cabbage Palm		1			12			
12	1	<i>Araucaria heterophylla</i>	Norfolk Island Pine		1			24			
13	1	<i>Sabal palmetto</i>	Cabbage Palm		1			12			
14	1	<i>Sabal palmetto</i>	Cabbage Palm		1			12			
15	1	<i>Sabal palmetto</i>	Cabbage Palm		1			12			
16	1	<i>Sabal palmetto</i>	Cabbage Palm		1			12			
17	1	<i>Sabal palmetto</i>	Cabbage Palm		1			12			
18	1	<i>Sabal palmetto</i>	Cabbage Palm		1			12			
19	1	<i>Sabal palmetto</i>	Cabbage Palm		1			12			
20	1	Unknown tree			1			36			
21	1	<i>Coccoloba diversifolia</i>	Pigeon Plum		1						
22	1	<i>Sabal palmetto</i>	Cabbage Palm			1		12	4'	6'	2 WEEKS
23	1	<i>Sabal palmetto</i>	Cabbage Palm			1		12	4'	6'	2 WEEKS
24	1	<i>Sabal palmetto</i>	Cabbage Palm			1		12	4'	6'	2 WEEKS
25	1	<i>Bucida buceras</i>	Black Olive		1						
26	1	<i>Tabebuia chrysantha</i>	Golden Trumpet Tree		1						
27	1	<i>Sabal palmetto</i>	Cabbage Palm		1						
28	1	<i>Sabal palmetto</i>	Cabbage Palm		1						
29	1	<i>Sabal palmetto</i>	Cabbage Palm		1						
29	TOTAL OF TREES				26	3	0				



1 TREE PROTECTION DETAIL
NTS



2 CHAIN LINK DETAIL
NTS

REVISIONS	BY
LOCATION:	4400 CHASE AVENUE MIAMI BEACH, FLORIDA 33139
PROJECT TEAM:	DOUGLAS WOOD ASSOCIATES, INC. M STRUCTURAL ENGINEERS DOUGLAS WOOD ASSOCIATES, INC. 5040 NW 7TH STREET SUITE 820 MIAMI, FLORIDA 33126 PH. 305 461-3450 EB 6353 info@douglaswood.biz www.douglaswood.biz OWNER CITY OF MIAMI BEACH 1700 CONVENTION CENTER DRIVE MIAMI, FLORIDA 33139 ARCHITECTS FERGUSON GLASSGOW SCHUSTER SOTO, INC. 901 PONCE DE LEON BOULEVARD SUITE 304 CORAL GABLES, FLORIDA 33134 LANDSCAPE ARCHITECTS SAVINO & MILLER DESIGN STUDIO 12345 NE 6TH AVENUE A NORTH MIAMI, FLORIDA 33161 MEP EMTEC, CORP. 250 CATALONIA AVENUE SUITE 502 CORAL GABLES, FLORIDA 33134 CIVIL ENGINEERS BISCAYNE ENGINEERING COMPANY, INC. 529 W. FLAGLER STREET MIAMI, FLORIDA 33130 LEED CONSULTANT SEBASTIAN ELERT ARCHITECTURE 9840 SW 85TH STREET SUITE 304 MIAMI, FLORIDA 33173 GEOTECHNICAL ENGINEER ARDAMAN & ASSOCIATES 2608 W. 84TH STREET HALEAH, FLORIDA 33016
Project:	PAVILLION, MUSS PARK MIAMI BEACH, FLORIDA
Sheet Title:	Tree Management Plan
Date:	02/12/2016
Scale:	AS SHOWN
Drawn by:	JJ
Job:	15114
Sheet	LT-1 Of 1