



99 NW 27 AVE Miami, FL 33125 Phone (305)969-9423 Fax (305)969-9453

Youssef Hachem Consulting Engineering
CA 26553

October 6, 2022

Deborah Tackett
Chief Historic Preservation Officer
City of Miami Beach
1700 Convention Center Drive
Miami Beach, FL 33139

Re: Shore Club
1901 Collins Ave
Miami Beach, FL 33139

Dear Official:

Enclosed please find a detailed plan for demolition of the existing 20-story hotel tower at 1901 Collins Avenue submitted in connection with Historic Preservation Board Application NO. HPB22-0546.

This plan provides for a safe demolition of the existing non-contributing tower while ensuring protection of the surrounding contributing structures with the site.

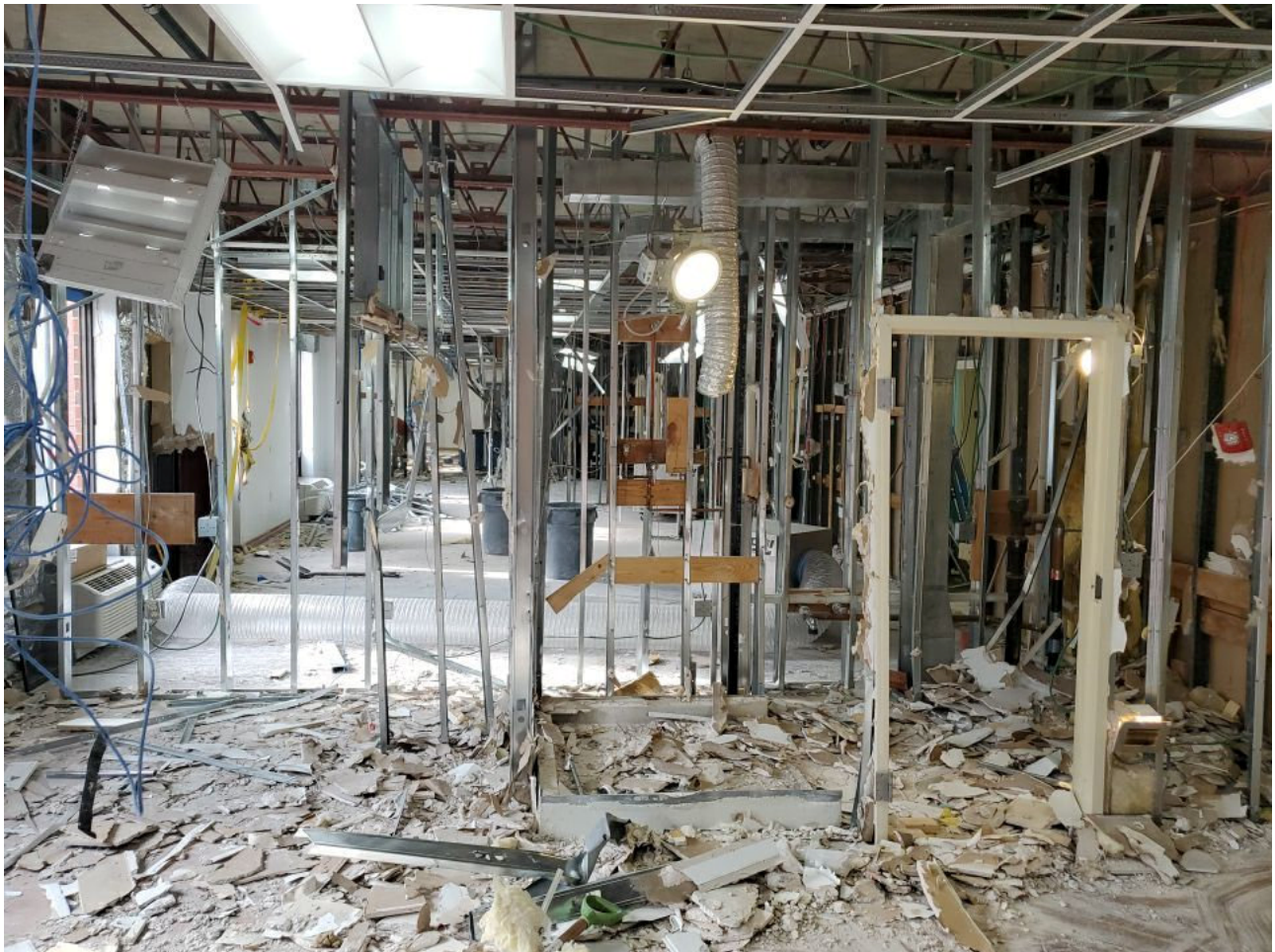
Please feel free to contact us if we may be of further service to you.

Sincerely,

Youssef Hachem, Ph.D., P.E.
PE 43302

1- Demolish interiors removing:

- a. All furniture
- b. Finishes
- c. Piping and conduits
- d. Utilities and machines
- e. Studs and non load bearing walls down to concrete slabs and columns

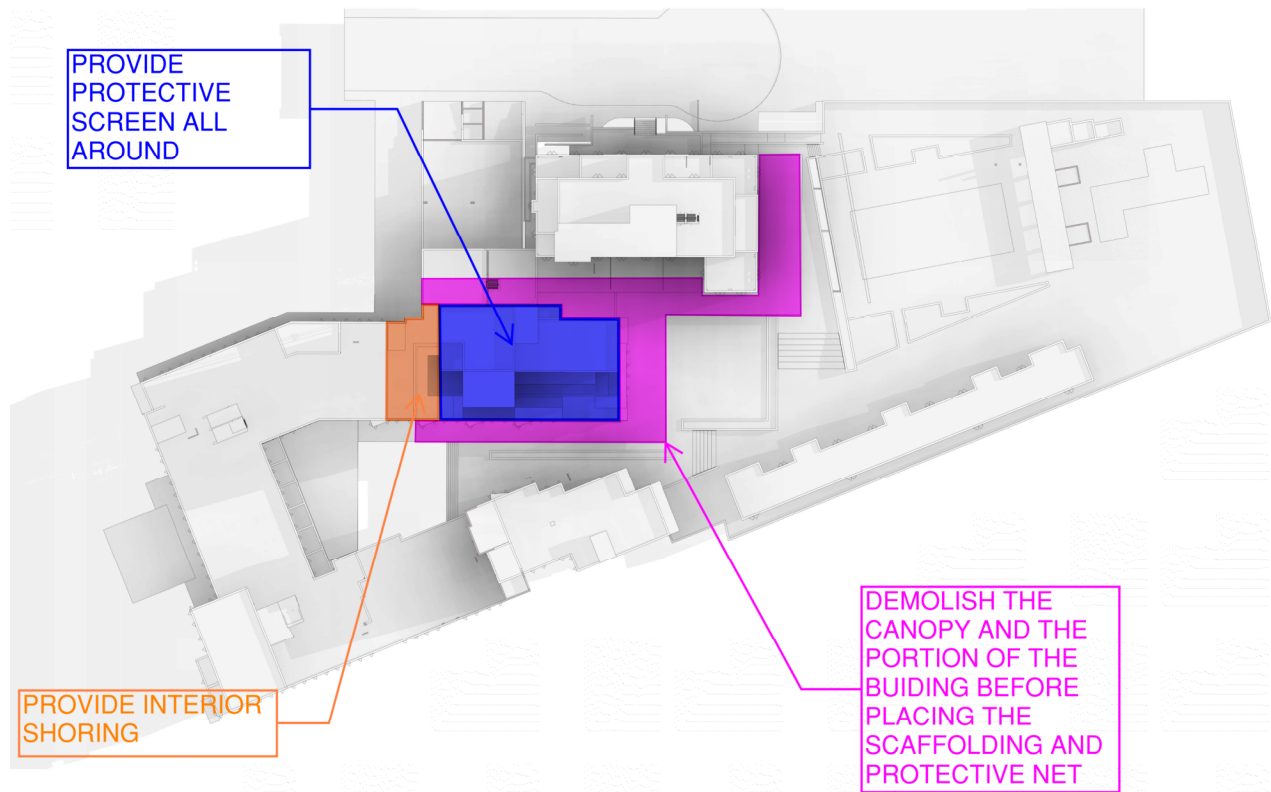


2- Shore all floors of the tower per shoring engineer plan under the PT slabs



Exhibit A:

Site Plan



- 3- Construct scaffolding along the facades up to the roof, to include dust screen and falling debris protection following the engineer design and calculations.
The scaffolding will provide vertical access to the tower and allow containment of all debris matter.



Exhibit B:

Northwest Façade

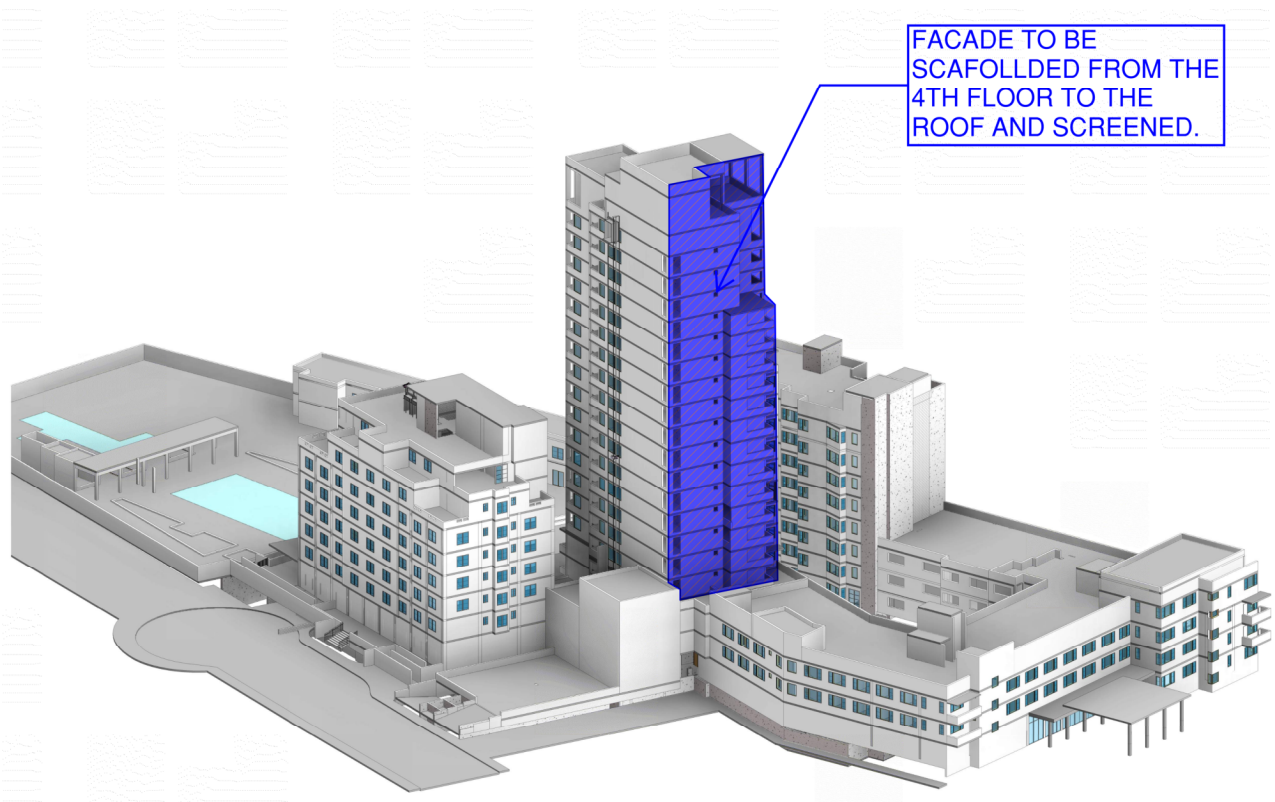


Exhibit C:

Northeast Façade

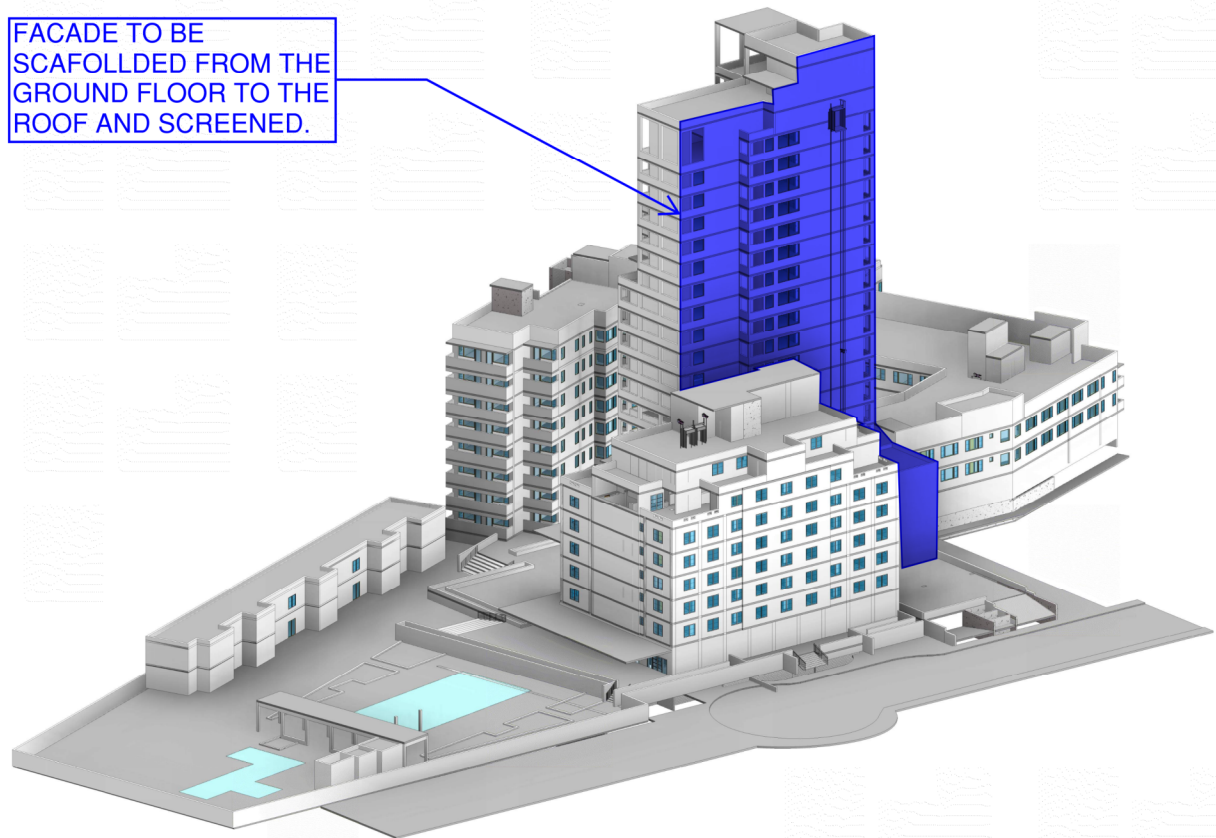


Exhibit D:

Southeast Façade

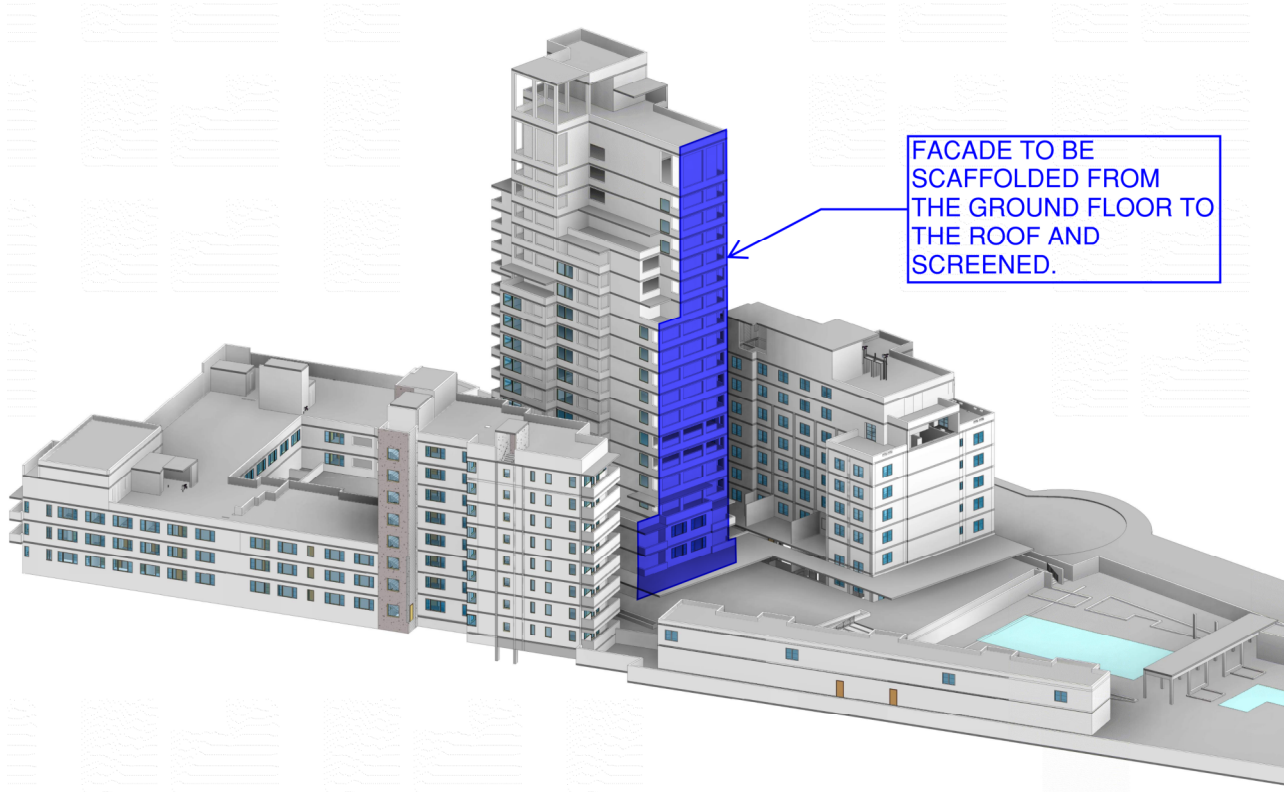
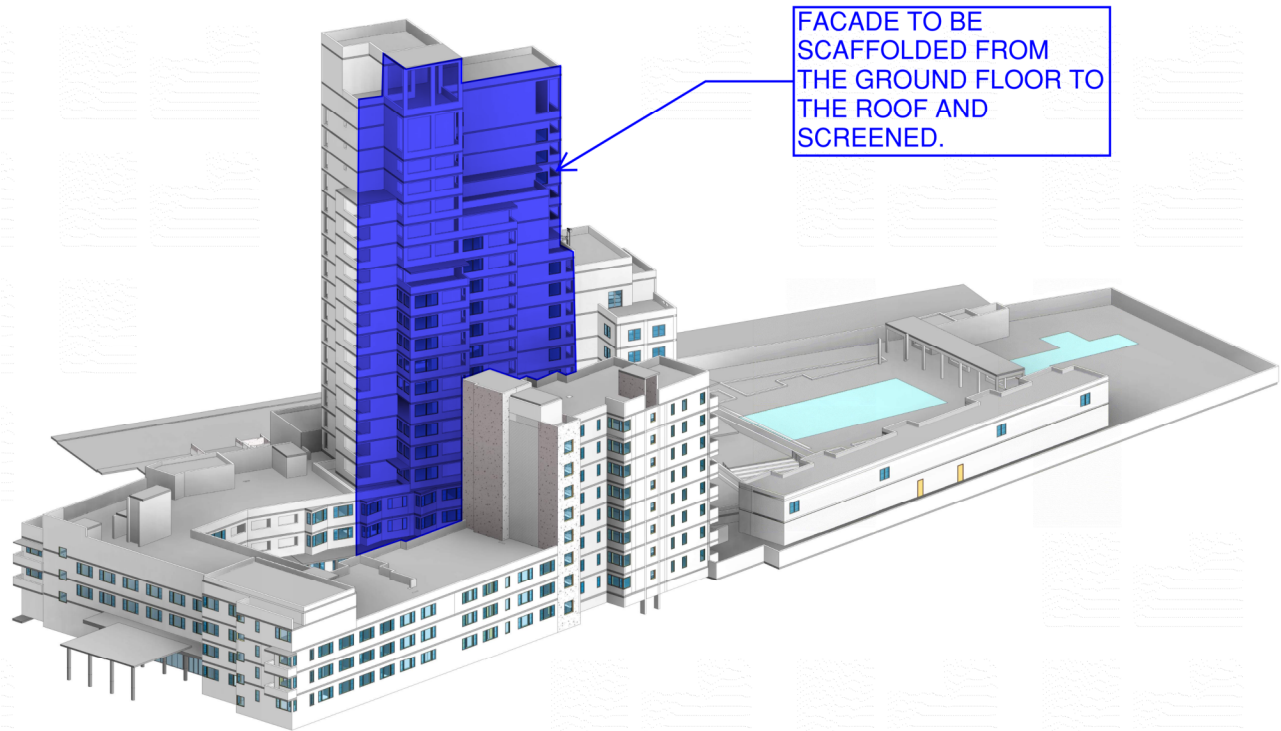


Exhibit E:

Southwest Façade

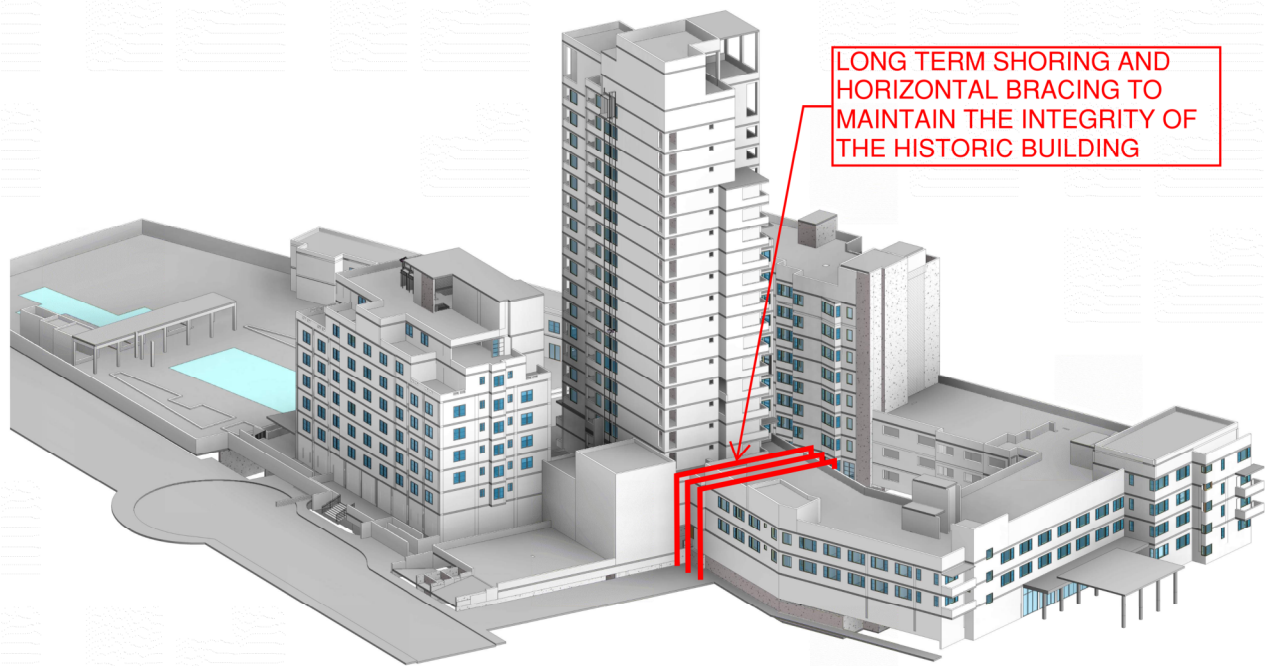


- 4- Install long term shoring in the 3 story historic building West of the cut line at the expansion joint.
Install long term horizontal bracing west of the cut line to stabilize the historic building to remain.
Both systems will remain in place after the tower is removed to maintain the integrity of the historic section.



Exhibit F:

Northwest Façade

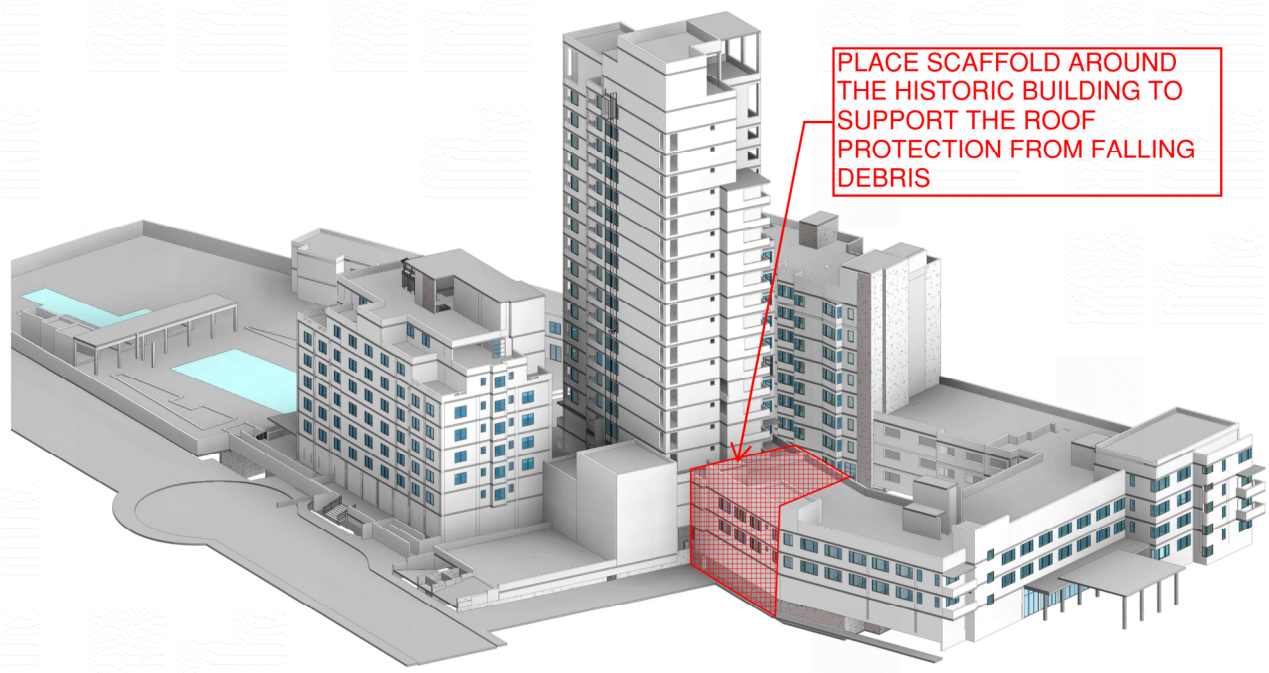


- 5- install scaffolding on the North and South facades of the historic building to remain West of the cut line (expansion joint), and install roof protection of falling debris



Exhibit G:

Northwest Façade



6- PT Cable sub contractor must be hired to release the PT cables



- 7- Demolish level 22, and remove debris.
- 8- Release PT cables of the 21th floor, then demolish the 21th floor.
- 9- Repeat step 8, one floor at a time from 20th floor to ground floor

10- Provide a MOT plan for trucks along 20 st during demolition activities



Load, transport and dispose of materials in accordance with local, state and federal guidelines

A handwritten signature in black ink, appearing to read 'YHCE' or similar, with a stylized flourish extending from the bottom.

Youssef Hachem, Ph.D., P.E., S.I.
FL. Prof. Eng. 43302
FL Special Inspector 6985061