

NOT FOR CONSTRUCTION

These Design And Drawing Are The Copyrighted Property Of Revuelta Architecture International P.A. and May Not Be Reproduced Except with Specific Written Consent of the Architect. All Dimensions Are In Feet Unless Otherwise Indicated. This Drawing Is Based On The Final Approved Plans For THE SANCTUARY HOTEL. ANY CHANGES TO THE SANCTUARY HOTEL OR TO THE SITE PLAN SHALL BE MADE BY THE ARCHITECT. DATE: 10/05/2022

AS APPROVED ON HPB MEETING OF  
JULY 14, 2020 - FILE No. HPB19-0354

**revuelta**  
architecture  
international



**DRAWING INDEX**

- GI-100 COVER & DRAWING INDEX SHEET
- LR-100 EXISTING TREE DISPOSITION PLAN
- LR-101 EXISTING TREE DISPOSITION & MITIGATION SCHEDULE
- LR-200 TREE DISPOSITION GENERAL NOTES
- LH-100 HARDSCAPE PLAN - GROUND LEVEL
- LH-200 HARDSCAPE PLAN - POOL DECK LEVEL
- LP-100 PLANTING PLAN - GROUND LEVEL - CANOPY
- LP-101 PLANTING PLAN - GROUND LEVEL - UNDERSTORY
- LP-200 PLANTING PLAN - POOL DECK LEVEL
- LP-300 PLANTING SCHEDULE, GENERAL NOTES & DETAILS
- LP-301 PLANTING IMAGES
- LE-100 WEST ELEVATION
- LE-101 NORTH ELEVATION
- LE-102 EAST ELEVATION
- LE-103 SOUTH ELEVATION
- LL-100 LIGHTING PLAN & SCHEDULE - GROUND LEVEL
- LL-200 LIGHTING PLAN & SCHEDULE - POOL DECK LEVEL

Miami  
Santiago, Chile  
revuelta-architecture.com

2850 SW 27TH AVE  
SUITE 415  
MIAMI, FL 33134  
TEL: 305 854 9299  
F: 305 854 9882  
WWW.DAVIDODISHOO.COM

**SANCTUARY HOTEL**  
1745 JAMES AVENUE  
MIAMI BEACH, FLORIDA 33139

Revisions  
10/05/22

Owner Information  
1745 JAMES LLC  
1111 Kane Concourse  
Bay Harbor Islands, Florida  
33140  
(305) 763-8166  
Consultant  
DAVID O. INC.  
LANDSCAPE ARCHITECTURE  
2886 SW 28TH LN  
MIAMI, FL 33133  
P. 305 854 9299 | F. 305 854 9882  
WWW.DAVIDODISHOO.COM

Digitally  
signed by  
David J.  
Odishoo  
Date:  
2022.10.05  
19:30:51  
-04'00'  
David J. Odishoo  
RLA-6666889

HPB FINAL SUBMITTAL  
Date  
10/05/2022  
Scale  
AS SHOWN  
Project No.  
20002  
Sheet Name  
COVER & DRAWING INDEX  
Sheet No.  
**GI-100**

AS APPROVED ON HPB MEETING OF  
JULY 14, 2020 - FILE No. HPB19-0354

revuelta  
architecture  
international

Miami  
Santiago, Chile  
revuelta-architecture.com

3350 SW 27TH AVE  
SUITE 112  
MIAMI, FL 33133  
T: 305 590 5000  
F: 305 590 5000

Project

**SANCTUARY HOTEL**  
1745 JAMES AVENUE  
MIAMI BEACH, FLORIDA 33139

Revisions  
101 AVAILABLE DATE 13/09/22

Owner Information  
**1745 JAMES LLC**  
1111 Kane Concourse  
Bay Harbor Islands, Florida  
33149  
(305) 763-8166

Consultant  
**DAVID O. INC.**  
LANDSCAPE ARCHITECTURE  
2686 SW 28TH LN  
MIAMI, FL 33133  
P: 305 854 9299 | F: 305 854 8882  
WWW.DAVIDODISHOO.COM

Digitally  
signed by  
David J.  
Odishoo  
Date:  
2022.10.05  
19:33:13  
-04'00'  
David J. Odishoo  
RLA-666899

HPB FINAL SUBMITTAL

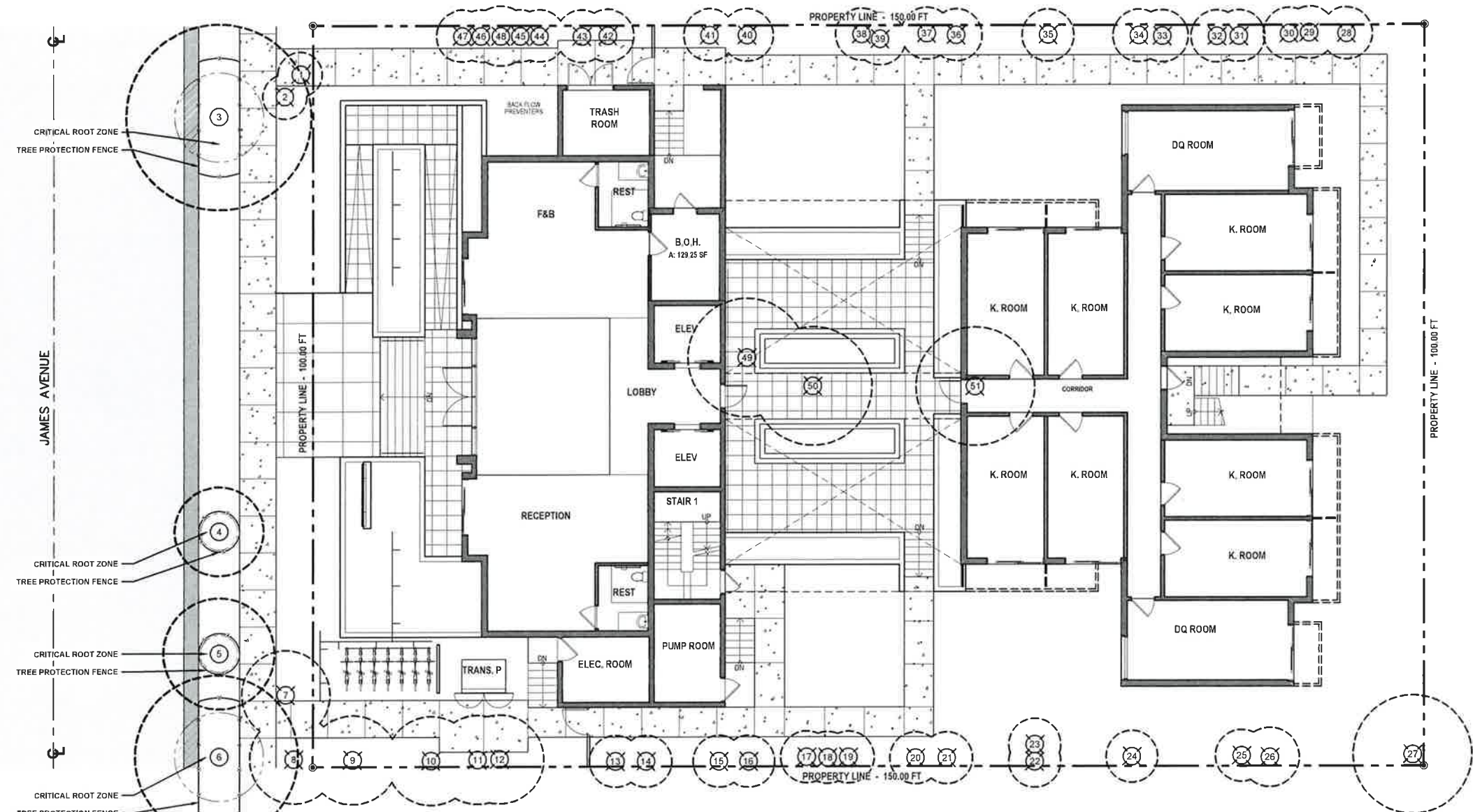
Date  
10/05/2020  
Scale  
AS SHOWN  
Project No.  
20092

Sheet Name  
EXISTING TREE  
DISPOSITION PLAN  
Sheet No.

**LR-100**

NOT FOR CONSTRUCTION

These Design And Drawings Are The Copyrighted Property Of Revuelta Architecture International P.A. and May Not Be Reproduced Except With Specific Written Consent of the Architect.  
P.A. Revuelta Architecture International P.A. 1745 James Avenue, Suite 112, Miami Beach, FL 33139. Revuelta Architecture International P.A. is a Limited Liability Company.  
DATE: 10/05/2020



**EXISTING TREE DISPOSITION PLAN**  
SCALE: 1/8" = 1'-0"  
0 5' 10' 25' 50'





These Design And Drawings Are The Copyrighted Property Of Revuelta Architecture, International, P.A., and May Not Be Reproduced, Stored, or Transmitted in Any Form or by Any Means, Electronic, Mechanical, or otherwise, Without the Prior Written Consent of Revuelta Architecture, International, P.A.

The Designer And Drafting Are Not Responsible For Any Errors or Omissions in These Drawings, Plans, Specifications, or Schedules, or for Any Damages or Injuries, or for Any Losses or Expenses, or for Any Claims, Damages, or Injuries, or for Any Costs or Expenses, or for Any Litigation, or for Any Other Matters, or for Any Consequences, or for Any Other Matters, or for Any Damages or Injuries, or for Any Losses or Expenses, or for Any Claims, Damages, or Injuries, or for Any Costs or Expenses, or for Any Litigation, or for Any Other Matters, or for Any Consequences, or for Any Other Matters.

NOT FOR CONSTRUCTION

D

C

B

A

EXISTING TREE DISPOSITION SCHEDULE									
TREE No.	COMMON NAME	BOTANICAL NAME	DBH (IN.)	HT (FT.)	SP. (FT.)	CONDITION	T.P.Z. (FT)	C.R.Z. (FT)	DISPOSITION
1	Christmas Palm	<i>Adoridia merrillii</i>	6	9	-	Poor	n/a	n/a	Remove
2	Bottle Palm	<i>Hyophorbe lagenicaulis</i>	-	6 wd	13	Poor	n/a	n/a	Remove
3	Green Buttonwood	<i>Conocarpus erectus</i>	12	25	25	Good	16	12	Remain - Street Tree
4	Pink Tabebuia	<i>Tabebuia rosea</i>	9	20	12	Good	5	5	Remain - Street Tree
5	Bulnesia	<i>Bulnesia arborea</i>	6	20	15	Good	5	5	Remain - Street Tree
6	Green Buttonwood	<i>Conocarpus erectus</i>	12	25	22	Good	16	12	Remain - Street Tree
7	Bottle Palm	<i>Hyophorbe lagenicaulis</i>	-	6 wd	13	Poor	n/a	n/a	Remove
8	Queen Palm	<i>Syagrus romanzoffiana</i>	10	12	12	Poor	n/a	n/a	Remove
9	Queen Palm	<i>Syagrus romanzoffiana</i>	11	20	12	Poor	n/a	n/a	Remove
10	Weeping Fig	<i>Ficus benjamina</i>	7	20	10	Poor	n/a	n/a	Remove
11	Weeping Fig	<i>Ficus benjamina</i>	7	20	10	Poor	n/a	n/a	Remove
12	Weeping Fig	<i>Ficus benjamina</i>	7	20	10	Poor	n/a	n/a	Remove
13	White Bird of Paradise	<i>Strelitzia nicotai</i>	6-9	35	10	Poor	n/a	n/a	Remove
14	White Bird of Paradise	<i>Strelitzia nicotai</i>	6-9	35	10	Poor	n/a	n/a	Remove
15	White Bird of Paradise	<i>Strelitzia nicotai</i>	6-9	35	10	Poor	n/a	n/a	Remove
16	White Bird of Paradise	<i>Strelitzia nicotai</i>	6-9	35	10	Poor	n/a	n/a	Remove
17	White Bird of Paradise	<i>Strelitzia nicotai</i>	6-9	35	10	Poor	n/a	n/a	Remove
18	White Bird of Paradise	<i>Strelitzia nicotai</i>	6-9	35	10	Poor	n/a	n/a	Remove
19	White Bird of Paradise	<i>Strelitzia nicotai</i>	6-9	35	10	Poor	n/a	n/a	Remove
20	White Bird of Paradise	<i>Strelitzia nicotai</i>	6-9	35	10	Poor	n/a	n/a	Remove
21	White Bird of Paradise	<i>Strelitzia nicotai</i>	6-9	35	10	Poor	n/a	n/a	Remove
22	White Bird of Paradise	<i>Strelitzia nicotai</i>	6-9	35	10	Poor	n/a	n/a	Remove
23	White Bird of Paradise	<i>Strelitzia nicotai</i>	6-9	35	10	Poor	n/a	n/a	Remove
24	White Bird of Paradise	<i>Strelitzia nicotai</i>	6-9	35	10	Poor	n/a	n/a	Remove
25	White Bird of Paradise	<i>Strelitzia nicotai</i>	6-9	35	10	Poor	n/a	n/a	Remove
26	Christmas Palm	<i>Veitchia merrillii</i>	10	12	8	Poor	n/a	n/a	Remove
27	Strangler Fig	<i>Ficus aurea</i>	24	23	16	Poor	n/a	n/a	Remove
28	White Bird of Paradise	<i>Strelitzia nicotai</i>	6-9	35	10	Poor	n/a	n/a	Remove
29	White Bird of Paradise	<i>Strelitzia nicotai</i>	6-9	35	10	Poor	n/a	n/a	Remove
30	White Bird of Paradise	<i>Strelitzia nicotai</i>	6-9	35	10	Poor	n/a	n/a	Remove
31	White Bird of Paradise	<i>Strelitzia nicotai</i>	6-9	35	10	Poor	n/a	n/a	Remove
32	White Bird of Paradise	<i>Strelitzia nicotai</i>	6-9	35	10	Poor	n/a	n/a	Remove
33	White Bird of Paradise	<i>Strelitzia nicotai</i>	6-9	35	10	Poor	n/a	n/a	Remove
34	White Bird of Paradise	<i>Strelitzia nicotai</i>	6-9	35	10	Poor	n/a	n/a	Remove
35	White Bird of Paradise	<i>Strelitzia nicotai</i>	6-9	35	10	Poor	n/a	n/a	Remove
36	White Bird of Paradise	<i>Strelitzia nicotai</i>	6-9	35	10	Poor	n/a	n/a	Remove
37	White Bird of Paradise	<i>Strelitzia nicotai</i>	6-9	35	10	Poor	n/a	n/a	Remove
38	White Bird of Paradise	<i>Strelitzia nicotai</i>	6-9	35	10	Poor	n/a	n/a	Remove
39	White Bird of Paradise	<i>Strelitzia nicotai</i>	6-9	35	10	Poor	n/a	n/a	Remove
40	White Bird of Paradise	<i>Strelitzia nicotai</i>	6-9	35	10	Poor	n/a	n/a	Remove
41	White Bird of Paradise	<i>Strelitzia nicotai</i>	6-9	35	10	Poor	n/a	n/a	Remove
42	White Bird of Paradise	<i>Strelitzia nicotai</i>	6-9	35	10	Poor	n/a	n/a	Remove
43	White Bird of Paradise	<i>Strelitzia nicotai</i>	6-9	35	10	Poor	n/a	n/a	Remove
44	White Bird of Paradise	<i>Strelitzia nicotai</i>	6-9	35	10	Poor	n/a	n/a	Remove
45	White Bird of Paradise	<i>Strelitzia nicotai</i>	6-9	35	10	Poor	n/a	n/a	Remove
46	White Bird of Paradise	<i>Strelitzia nicotai</i>	6-9	35	10	Poor	n/a	n/a	Remove
47	White Bird of Paradise	<i>Strelitzia nicotai</i>	6-9	35	10	Poor	n/a	n/a	Remove
48	Montgomery Palm	<i>Veitchia montgomeryana</i>	6	30	8	Poor	n/a	n/a	Remove
49	Bamboo	<i>Bambusa textilis gracilis</i>	20-25 culms	30 - 35	-	Poor	n/a	n/a	Remove
50	Bamboo	<i>Bambusa textilis gracilis</i>	20-25 culms	30 - 35	-	Poor	n/a	n/a	Remove
51	Bamboo	<i>Bambusa textilis gracilis</i>	20-25 culms	30 - 35	-	Poor	n/a	n/a	Remove

AS APPROVED ON HPB MEETING OF JULY 14, 2020 - FILE No. HPB19-0354

EXISTING TREES/PALMS MITIGATION SCHEDULE (PROPERTY)					
TREE NUMBER	COMMON NAME	SCIENTIFIC NAME	DIAMETER (INCHES)	HEIGHT (FT)	CANOPY (FT)
9	Queen Palm	<i>Syagrus romanzoffiana</i>	11	20	12
10	Weeping Fig	<i>Ficus benjamina</i>	7	20	10
11	Weeping Fig	<i>Ficus benjamina</i>	7	20	10
12	Weeping Fig	<i>Ficus benjamina</i>	7	20	10
27	Strangler Fig	<i>Ficus aurea</i>	24	23	16
48	Montgomery Palm	<i>Veitchia montgomeryana</i>	6	30	8

Total Amount of DBH Inches to be Mitigated = 45 Inches  
Total Amount of Palms to be Mitigated = 2

MITIGATION REQUIREMENTS (PROPERTY)		
TOTAL TREE DBH INCHES REMOVED	REQUIREMENT	PROVIDED
45 DBH Inches	16 Trees @ 12ft Ht. x 6ft Sp. x 2in D.B.H. Min. - or - 8 Trees @ 16ft Ht. x 8ft Sp. x 4in D.B.H. Min.	7 Trees @ 16ft Ht. x 10-12ft Sp. x 4in D.B.H. Min.
TOTAL PALMS REMOVED	2 Trees @ 12ft Ht. x 6ft Sp. x 2in D.B.H. Min. - or - 1 Trees @ 16ft Ht. x 8ft Sp. x 4in D.B.H. Min.	7 Trees @ 12ft Ht. x 8-10ft Sp. x 2-3in D.B.H. Min.

PROPOSED TREES MITIGATION SCHEDULE (PROPERTY)			
NATIVE	QUANTITY	BOTANICAL/COMMON NAME	SPECIFICATIONS
Y	2	<i>Bursera simaruba</i> Gumbo Limbo Tree	16' Ht. x 10'-12' Sp. x 4" DBH Min., Field Grown, FL Grade #1 or Better.
N	1	<i>Caesalpinia granadillo</i> Bridavell Tree	16' Ht. x 10'-12' Sp. x 4" DBH Min., Field Grown, FL Grade #1 or Better.
Y	4	<i>Chrysophyllum oliviforme</i> Salinleaf Tree	16' Ht. x 10'-12' Sp. x 4" DBH Min., Field Grown, FL Grade #1 or Better.
Y	3	<i>Krugiodendron ferreum</i> Black Ironwood Tree	12' Ht. x 8'-10' Sp. x 2"-3" DBH Min., Field Grown, FL Grade #1 or Better.
Y	4	<i>Myrcianthes fragrans</i> Simpson Stopper Tree	12' Ht. x 8'-10' Sp. x 2"-3" DBH Min., Field Grown, FL Grade #1 or Better.

Total Trees Required = 18 Trees at 12ft Ht. x 6ft Sp. x 2in D.B.H. Min. - or - 9 Trees at 16ft Ht. x 8ft Sp. x 4in D.B.H. Min. - or - any combination  
Total Trees Provided = 7 Trees at 12ft Ht. x 8-10ft Sp. x 2-3in D.B.H. Min. & 7 Trees at 16ft Ht. x 10-12ft Sp. x 4in D.B.H. Min.

revuelta  
architecture  
international

Miami  
Santiago, Chile  
revuelta-architecture.com  
9850 SW 27TH AVE  
SUITE 1100  
MIAMI, FL 33155  
T: 305.654.9299  
F: 305.654.9040

Project  
SANCTUARY HOTEL  
1745 JAMES AVENUE  
MIAMI BEACH, FLORIDA 33139

Revisions  
CITY COMMENTS

Owner Information  
1745 JAMES LLC  
1111 Kane Concourse  
Bay Harbor Islands, Florida  
33140  
(305) 763-8166  
Consultant  
DAVID O. INC.  
LANDSCAPE ARCHITECTURE  
2886 SW 28TH LN  
MIAMI, FL 33133  
P: 305.854.9299 | F: 305.854.9882  
WWW.DAVIDODISHOO.COM

Digitally signed by  
David J. Odishoo  
Date: 2022.10.05 19:33:44 -04'00'  
David J. Odishoo  
RLA-666959

HPB FINAL SUBMITTAL  
Date: 10/05/2020  
Scale: AS SHOWN  
Project No.: 20002  
Sheet Name: EXISTING TREE DISPOSITION & MITIGATION SCHEDULE  
Sheet No.: LR-101









AS APPROVED ON HPB MEETING OF  
JULY 14, 2020 - FILE No. HPB19-0354

revuelta  
architecture  
international

Miami  
Santiago, Chile  
revuelta-architecture.com  
2050 SW 27TH AVE  
SUITE 110  
MIAMI, FL 33135  
T: 305.890.5000  
F: 305.890.5000

Project

**SANCTUARY HOTEL**  
1745 JAMES AVENUE  
MIAMI BEACH, FLORIDA 33139

Revisions  
CITY COMMENTS 15/09/22

Owner Information  
**1745 JAMES LLC**  
1111 Kane Concourse  
Bay Harbor Islands, Florida  
33140  
(305) 763-8166

Consultant  
**DAVID O. INC.**  
LANDSCAPE ARCHITECTURE  
2886 SW 28TH LN  
MIAMI, FL 33133  
P: 305.854.9299 | F: 305.854.9882  
WWW.DAVIDODISHOO.COM

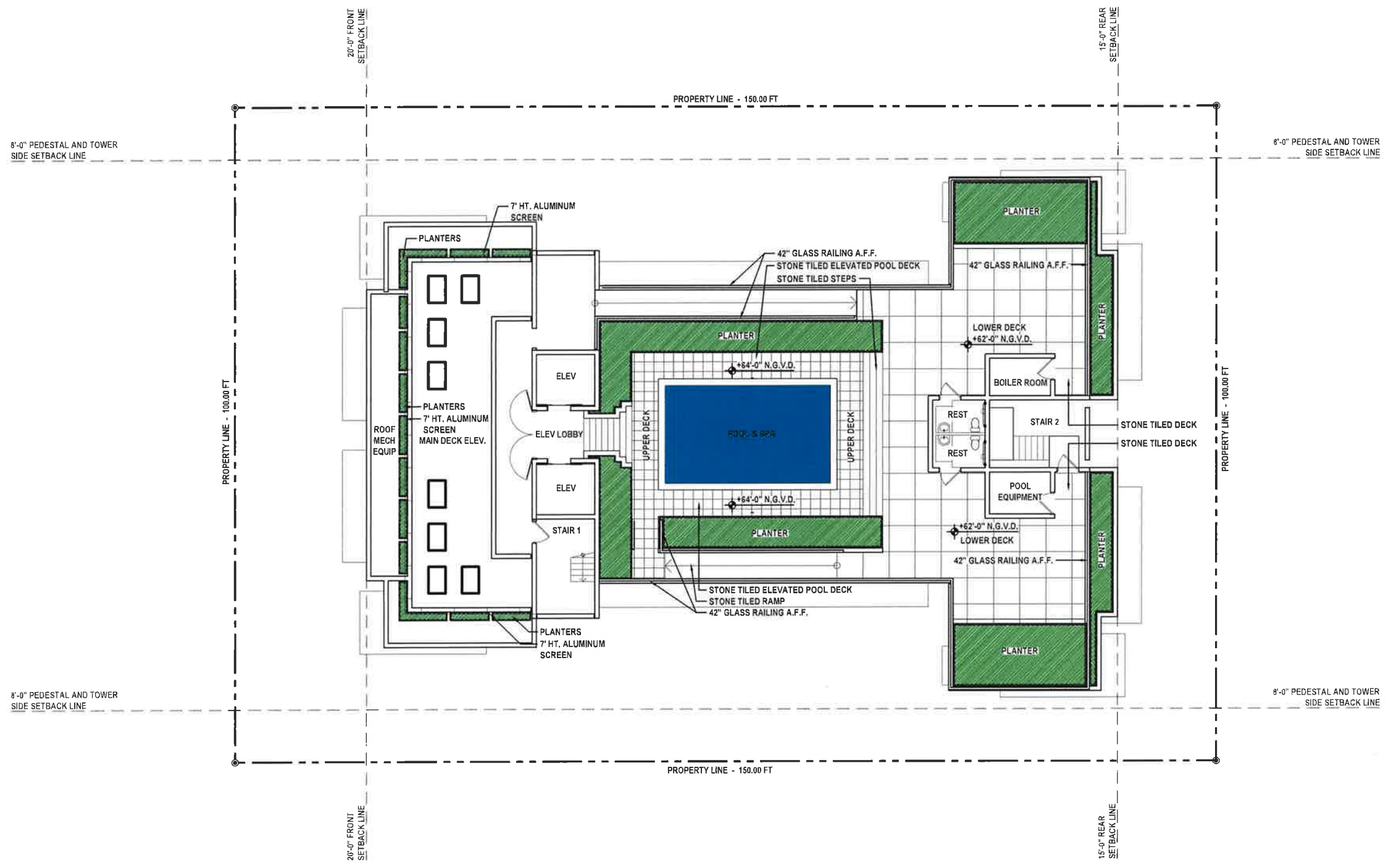
Digitally  
signed by  
David J.  
Odishoo  
Date:  
2022.10.05  
19:34:57  
-04'00'  
David J. Odishoo  
RLA-4668868

HPB FINAL SUBMITTAL

Date  
10/05/2020  
Scale  
AS SHOWN  
Project No.  
20002  
Sheet Name  
HARDSCAPE PLAN  
POOL DECK LEVEL  
Sheet No.

**LH-200**

These Design And Drawing Are The Copyrighted Property Of Revuelta Architecture International P.A. and May Not Be Reproduced Except with Specific Written Consent of the Architect.  
 The Submittal Shall Be Returned To The Architect Within 10 Business Days After The Date Of Issuance. If Not Returned Within This Timeframe, The Architect Shall Assume All Rights In The Submittal.  
 NOT FOR CONSTRUCTION



**HARDSCAPE PLAN - POOL DECK LEVEL**

SCALE: 1/8" = 1'-0"





NOT FOR CONSTRUCTION

AS APPROVED ON HPB MEETING OF  
JULY 14, 2020 - FILE No. HPB19-0354

revuelta  
architecture  
international

Miami  
Sanctuary, Chile  
revuelta-architecture.com

6050 SW 27TH AVE  
SUITE 110  
MIAMI, FL 33155  
TEL: 305.854.9299  
WWW.DAVIDODISHOO.COM

Project

**SANCTUARY HOTEL**  
1745 JAMES AVENUE  
MIAMI BEACH, FLORIDA 33139

Revisions  
101 APPLICABLE (P/A) 1/26/2022

Owner Information  
**1745 JAMES LLC**  
1111 Kane Concourse  
Bay Harbor Islands, Florida  
33140  
(305) 763-8186

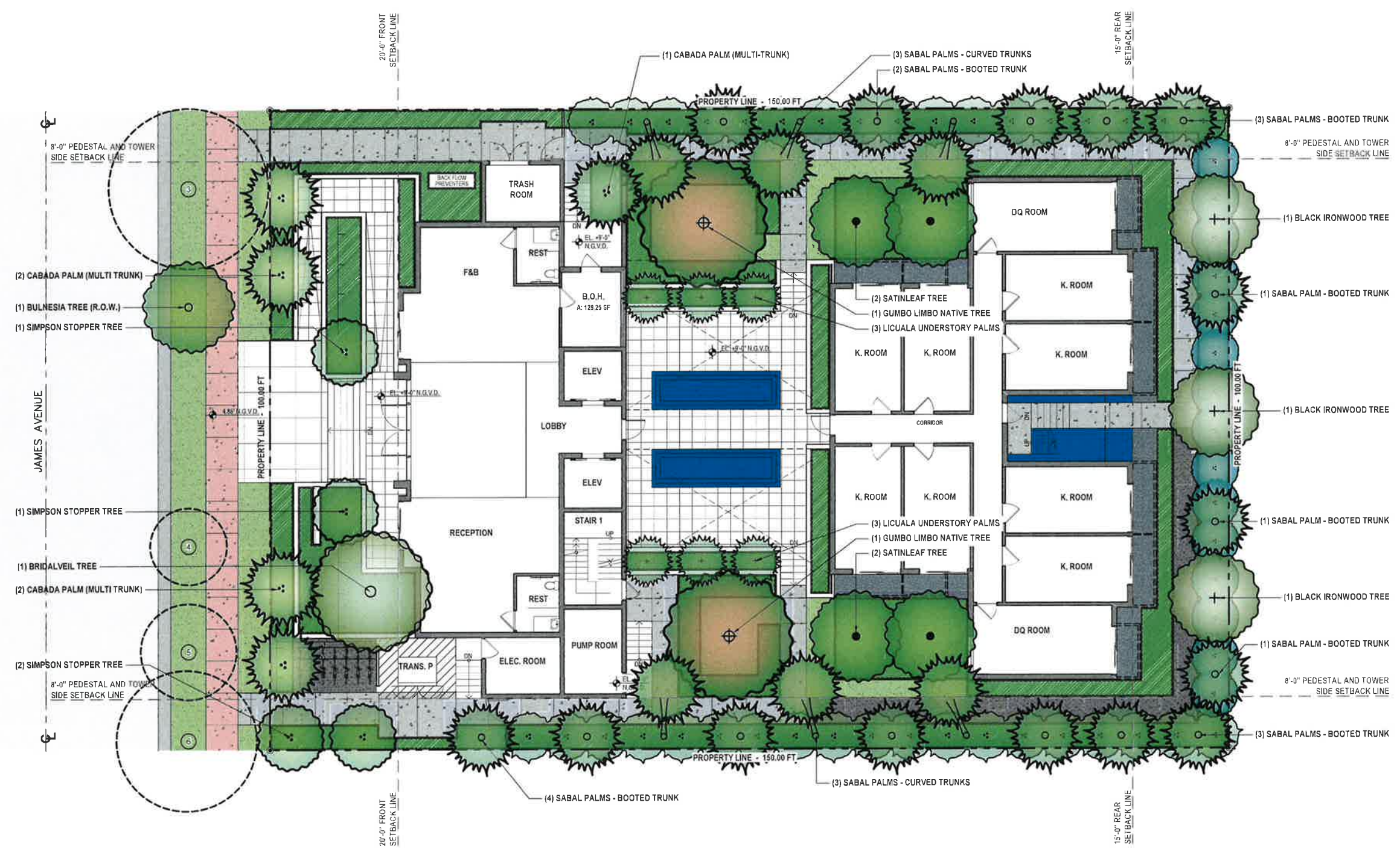
Consultant  
**DAVID O. INC.**  
LANDSCAPE ARCHITECTURE  
2685 SW 28TH LN  
MIAMI, FL 33133  
P: 305.854.9299 | F: 305.854.9882  
WWW.DAVIDODISHOO.COM

Digitally  
signed by  
David J.  
Odishoo  
Date:  
2022.10.05  
19:35:19  
'04'00'  
David J. Odishoo  
RLA-6666969

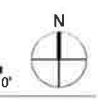
HPB FINAL SUBMITTAL

Date  
10/05/2020  
Scale  
AS SHOWN  
Project No.  
20002

Sheet Name  
PLANTING PLAN  
GROUND LEVEL - CANOPY  
Sheet No.  
**LP-100**



**PLANTING PLAN - GROUND LEVEL - CANOPY**  
SCALE: 1/8" = 1'-0"  
0 5' 10' 25' 50'



This Design and Drawing Are the Copyrighted Property of Revuelta Architecture International P.A. and May Not Be Reproduced Except with Specific Written Consent of the Architect. The Architect's Responsibility is Limited to the Design and Construction of the Landscape. The Client is Responsible for Obtaining All Necessary Permits and Approvals. The Architect's Responsibility is Limited to the Design and Construction of the Landscape. The Client is Responsible for Obtaining All Necessary Permits and Approvals.



NOT FOR CONSTRUCTION

AS APPROVED ON HPB MEETING OF  
JULY 14, 2020 - FILE No. HPB19-0354

**revuelta**  
architecture  
international

Miami  
San Diego, Chile  
revuelta-architecture.com  
2950 SW 57TH AVE  
SUITE 110  
MIAMI, FL 33143  
TEL: 305.854.9299  
FAX: 305.854.9882

Project

**SANCTUARY HOTEL**  
1745 JAMES AVENUE  
MIAMI BEACH, FLORIDA 33139

Revisions  
1. 10/05/2020

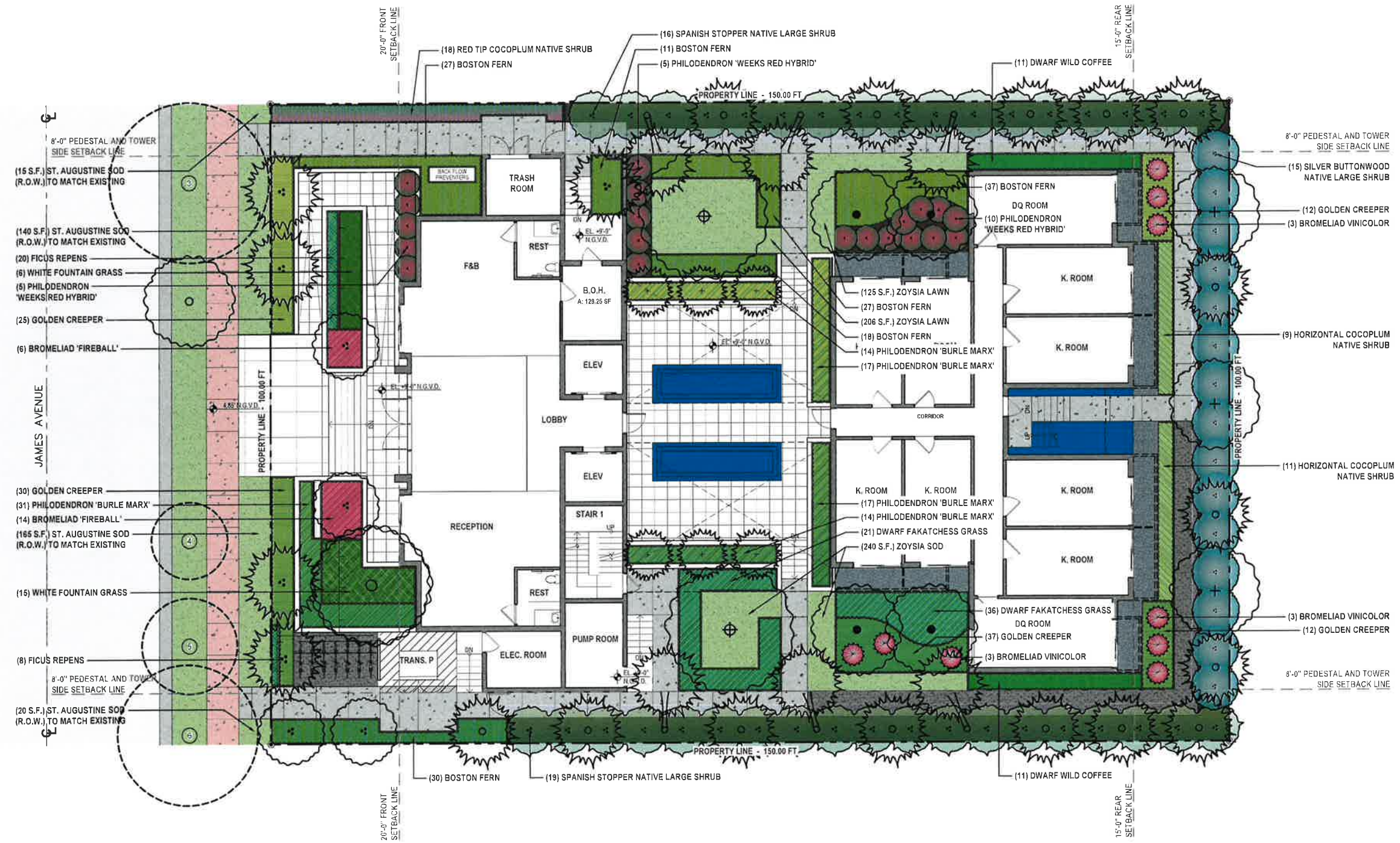
Owner Information  
**1745 JAMES LLC**  
1111 Kane Concourse  
Bay Harbor Islands, Florida  
33140  
(305) 763-8166  
Consultant  
**DAVID O. INC.**  
LANDSCAPE ARCHITECTURE  
2886 SW 28TH LN  
MIAMI, FL 33133  
P: 305.854.9299 | F: 305.854.9882  
WWW.DAVIDODISHOO.COM

Digitally signed by  
David J. Odishoo  
Date:  
2022.10.05  
19:36:35  
-04'00'  
David J. Odishoo  
RLA-666598

HPB FINAL SUBMITTAL

Date  
10/05/2020  
Scale  
AS SHOWN  
Project No.  
20002

Sheet Name  
PLANTING PLAN  
GROUND LEVEL - UNDERSTORY  
Sheet No.  
LP-101



**PLANTING PLAN - GROUND LEVEL - UNDERSTORY**

SCALE: 1/8" = 1'-0"



These Design and Drawing Act. The Copyrighted Property Of Revuelta Architecture International P.A. and May Not Be Reproduced Except with Specific Written Consent of the Architect. The Designer, Architect and/or any other Consultant or Contractor shall be responsible for the accuracy of the information provided in this drawing. The Designer, Architect and/or any other Consultant or Contractor shall be responsible for the accuracy of the information provided in this drawing. The Designer, Architect and/or any other Consultant or Contractor shall be responsible for the accuracy of the information provided in this drawing.



NOT FOR CONSTRUCTION

AS APPROVED ON HPB MEETING OF  
JULY 14, 2020 - FILE No. HPB19-0354

revuelta  
architecture  
international

Miami  
Santiago, Chile  
revuelta-architecture.com  
2850 SW 27TH AVE  
SUITE 110  
MIAMI, FL 33155  
T: 305 590 5000  
F: 305 590 5000

Project

**SANCTUARY HOTEL**  
1745 JAMES AVENUE  
MIAMI BEACH, FLORIDA 33139

Revisions  
NOT APPLICABLE (N/A) 1/30/2022

Owner Information  
**1745 JAMES LLC**  
1111 Kane Concourse  
Bay Harbor Islands, Florida  
33140  
(305) 763-8166  
Consultant  
**DAVID O. INC.**  
LANDSCAPE ARCHITECTURE  
2896 SW 28TH LN  
MIAMI, FL 33133  
P: 305.854.9299 | F: 305.854.9882  
WWW.DAVIDODISHOO.COM

Digitally  
signed by  
David J.  
Odishoo  
Date:  
2022.10.05  
19:37:13  
-04'00'  
David J. Odishoo  
RLA-6689669

HPB FINAL SUBMITTAL

Date  
10/05/2020  
Scale  
AS SHOWN  
Project No.  
20002

Sheet Name  
PLANTING PLAN  
POOL DECK LEVEL

Sheet No.  
**LP-200**

The Design And Drawings Are The Copyrighted Property Of Revuelta Architecture International, P.A. and May Not Be Reproduced, Stored, With Specific, Written Consent of the Architect. The Blockout (A1) To (B4) Shows... (B) (A) (B) (C) (D) (E) (F) (G) (H) (I) (J) (K) (L) (M) (N) (O) (P) (Q) (R) (S) (T) (U) (V) (W) (X) (Y) (Z) (AA) (AB) (AC) (AD) (AE) (AF) (AG) (AH) (AI) (AJ) (AK) (AL) (AM) (AN) (AO) (AP) (AQ) (AR) (AS) (AT) (AU) (AV) (AW) (AX) (AY) (AZ) (BA) (BB) (BC) (BD) (BE) (BF) (BG) (BH) (BI) (BJ) (BK) (BL) (BM) (BN) (BO) (BP) (BQ) (BR) (BS) (BT) (BU) (BV) (BW) (BX) (BY) (BZ) (CA) (CB) (CC) (CD) (CE) (CF) (CG) (CH) (CI) (CJ) (CK) (CL) (CM) (CN) (CO) (CP) (CQ) (CR) (CS) (CT) (CU) (CV) (CW) (CX) (CY) (CZ) (DA) (DB) (DC) (DD) (DE) (DF) (DG) (DH) (DI) (DJ) (DK) (DL) (DM) (DN) (DO) (DP) (DQ) (DR) (DS) (DT) (DU) (DV) (DW) (DX) (DY) (DZ) (EA) (EB) (EC) (ED) (EE) (EF) (EG) (EH) (EI) (EJ) (EK) (EL) (EM) (EN) (EO) (EP) (EQ) (ER) (ES) (ET) (EU) (EV) (EW) (EX) (EY) (EZ) (FA) (FB) (FC) (FD) (FE) (FF) (FG) (FH) (FI) (FJ) (FK) (FL) (FM) (FN) (FO) (FP) (FQ) (FR) (FS) (FT) (FU) (FV) (FW) (FX) (FY) (FZ) (GA) (GB) (GC) (GD) (GE) (GF) (GG) (GH) (GI) (GJ) (GK) (GL) (GM) (GN) (GO) (GP) (GQ) (GR) (GS) (GT) (GU) (GV) (GW) (GX) (GY) (GZ) (HA) (HB) (HC) (HD) (HE) (HF) (HG) (HH) (HI) (HJ) (HK) (HL) (HM) (HN) (HO) (HP) (HQ) (HR) (HS) (HT) (HU) (HV) (HW) (HX) (HY) (HZ) (IA) (IB) (IC) (ID) (IE) (IF) (IG) (IH) (II) (IJ) (IK) (IL) (IM) (IN) (IO) (IP) (IQ) (IR) (IS) (IT) (IU) (IV) (IW) (IX) (IY) (IZ) (JA) (JB) (JC) (JD) (JE) (JF) (JG) (JH) (JI) (JJ) (JK) (JL) (JM) (JN) (JO) (JP) (JQ) (JR) (JS) (JT) (JU) (JV) (JW) (JX) (JY) (JZ) (KA) (KB) (KC) (KD) (KE) (KF) (KG) (KH) (KI) (KJ) (KK) (KL) (KM) (KN) (KO) (KP) (KQ) (KR) (KS) (KT) (KU) (KV) (KW) (KX) (KY) (KZ) (LA) (LB) (LC) (LD) (LE) (LF) (LG) (LH) (LI) (LJ) (LK) (LL) (LM) (LN) (LO) (LP) (LQ) (LR) (LS) (LT) (LU) (LV) (LW) (LX) (LY) (LZ) (MA) (MB) (MC) (MD) (ME) (MF) (MG) (MH) (MI) (MJ) (MK) (ML) (MM) (MN) (MO) (MP) (MQ) (MR) (MS) (MT) (MU) (MV) (MW) (MX) (MY) (MZ) (NA) (NB) (NC) (ND) (NE) (NF) (NG) (NH) (NI) (NJ) (NK) (NL) (NM) (NN) (NO) (NP) (NQ) (NR) (NS) (NT) (NU) (NV) (NW) (NX) (NY) (NZ) (OA) (OB) (OC) (OD) (OE) (OF) (OG) (OH) (OI) (OJ) (OK) (OL) (OM) (ON) (OO) (OP) (OQ) (OR) (OS) (OT) (OU) (OV) (OW) (OX) (OY) (OZ) (PA) (PB) (PC) (PD) (PE) (PF) (PG) (PH) (PI) (PJ) (PK) (PL) (PM) (PN) (PO) (PP) (PQ) (PR) (PS) (PT) (PU) (PV) (PW) (PX) (PY) (PZ) (QA) (QB) (QC) (QD) (QE) (QF) (QG) (QH) (QI) (QJ) (QK) (QL) (QM) (QN) (QO) (QP) (QQ) (QR) (QS) (QT) (QU) (QV) (QW) (QX) (QY) (QZ) (RA) (RB) (RC) (RD) (RE) (RF) (RG) (RH) (RI) (RJ) (RK) (RL) (RM) (RN) (RO) (RP) (RQ) (RR) (RS) (RT) (RU) (RV) (RW) (RX) (RY) (RZ) (SA) (SB) (SC) (SD) (SE) (SF) (SG) (SH) (SI) (SJ) (SK) (SL) (SM) (SN) (SO) (SP) (SQ) (SR) (SS) (ST) (SU) (SV) (SW) (SX) (SY) (SZ) (TA) (TB) (TC) (TD) (TE) (TF) (TG) (TH) (TI) (TJ) (TK) (TL) (TM) (TN) (TO) (TP) (TQ) (TR) (TS) (TT) (TU) (TV) (TW) (TX) (TY) (TZ) (UA) (UB) (UC) (UD) (UE) (UF) (UG) (UH) (UI) (UJ) (UK) (UL) (UM) (UN) (UO) (UP) (UQ) (UR) (US) (UT) (UU) (UV) (UW) (UX) (UY) (UZ) (VA) (VB) (VC) (VD) (VE) (VF) (VG) (VH) (VI) (VJ) (VK) (VL) (VM) (VN) (VO) (VP) (VQ) (VR) (VS) (VT) (VU) (VV) (VW) (VX) (VY) (VZ) (WA) (WB) (WC) (WD) (WE) (WF) (WG) (WH) (WI) (WJ) (WK) (WL) (WM) (WN) (WO) (WP) (WQ) (WR) (WS) (WT) (WU) (WV) (WW) (WX) (WY) (WZ) (XA) (XB) (XC) (XD) (XE) (XF) (XG) (XH) (XI) (XJ) (XK) (XL) (XM) (XN) (XO) (XP) (XQ) (XR) (XS) (XT) (XU) (XV) (XW) (XX) (XY) (XZ) (YA) (YB) (YC) (YD) (YE) (YF) (YG) (YH) (YI) (YJ) (YK) (YL) (YM) (YN) (YO) (YP) (YQ) (YR) (YS) (YT) (YU) (YV) (YW) (YX) (YY) (YZ) (ZA) (ZB) (ZC) (ZD) (ZE) (ZF) (ZG) (ZH) (ZI) (ZJ) (ZK) (ZL) (ZM) (ZN) (ZO) (ZP) (ZQ) (ZR) (ZS) (ZT) (ZU) (ZV) (ZW) (ZX) (ZY) (ZZ)

6'-0" PEDESTAL AND TOWER  
SIDE SETBACK LINE

8'-0" PEDESTAL AND TOWER  
SIDE SETBACK LINE

8'-0" PEDESTAL AND TOWER  
SIDE SETBACK LINE

8'-0" PEDESTAL AND TOWER  
SIDE SETBACK LINE

20'-0" FRONT  
SETBACK LINE

15'-0" REAR  
SETBACK LINE

20'-0" FRONT  
SETBACK LINE

15'-0" REAR  
SETBACK LINE

PROPERTY LINE - 150.00 FT

PROPERTY LINE - 100.00 FT

PROPERTY LINE - 100.00 FT

PROPERTY LINE - 150.00 FT

(60) FICUS REPENS TRAINED TO  
PERFORATED ALUMINUM SCREEN

(50) GOLDEN CREEPER  
(5) THATCH PALMS

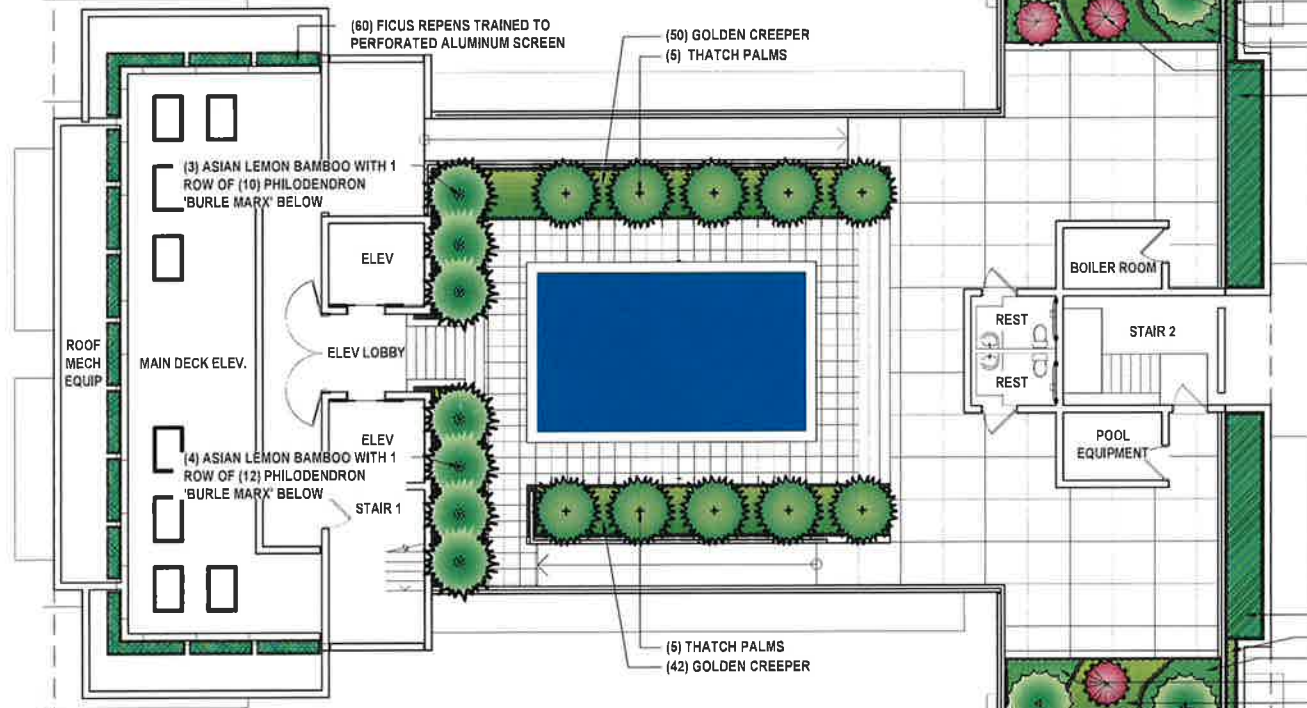
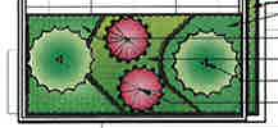
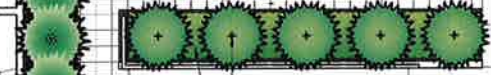
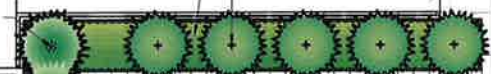
(3) ASIAN LEMON BAMBOO WITH 1  
ROW OF (10) PHILODENDRON  
'BURLE MARY' BELOW

(4) ASIAN LEMON BAMBOO WITH 1  
ROW OF (12) PHILODENDRON  
'BURLE MARY' BELOW

(5) THATCH PALMS  
(42) GOLDEN CREEPER

(17) CLUSIA ROSEA NANA  
(20) GOLDEN CREEPER  
(5) GOLDEN CREEPER  
(2) DIOON MEJIAE  
(8) DWARF FAKAHATCHEE GRASS  
(3) BROMELIAD VINICOLOR  
(9) DWARF FAKAHATCHEE GRASS

(9) DWARF FAKAHATCHEE GRASS  
(5) GOLDEN CREEPER  
(8) DWARF FAKAHATCHEE GRASS  
(17) CLUSIA ROSEA NANA  
(20) GOLDEN CREEPER  
(2) DIOON MEJIAE  
(2) BROMELIAD VINICOLOR



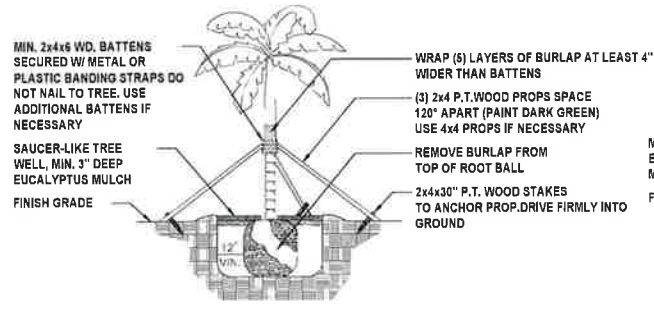
PLANTING PLAN - POOL DECK LEVEL

SCALE: 1/8" = 1'-0"

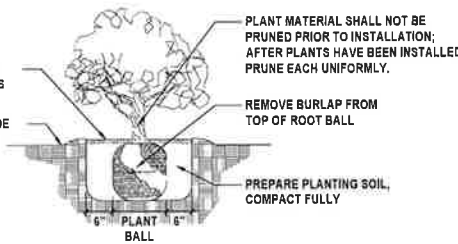




NOT FOR CONSTRUCTION

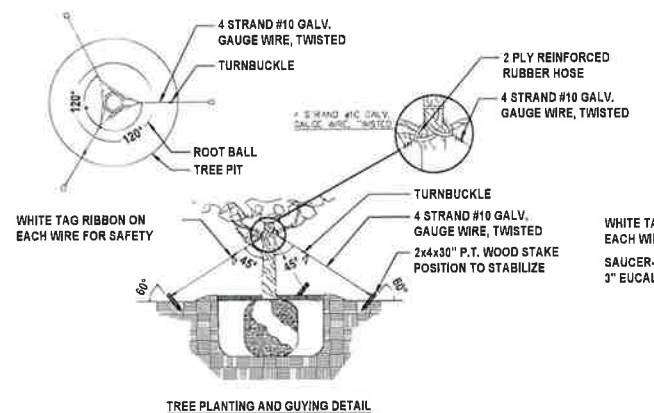
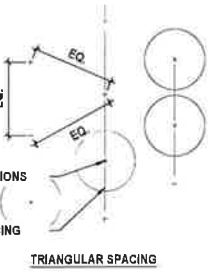
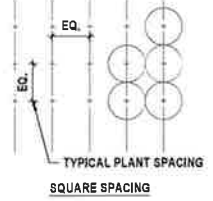


SPECIMEN TREE AND TALL PALMS SUPPORT DETAIL

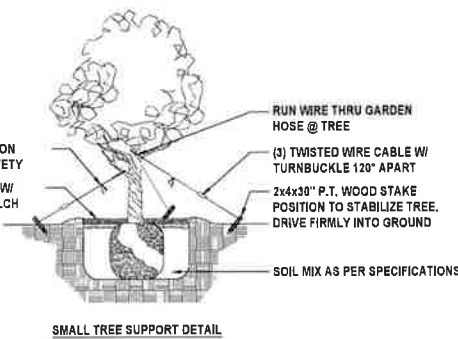


TYPICAL SHRUB PLANTING DETAIL

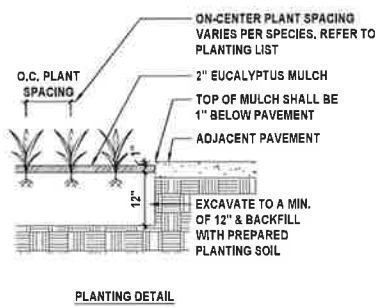
NOTE  
IN MOST CASES TRIANGULAR SPACING IS PREFERRED, USE SQUARE SPACING ONLY IN SMALL RECTILINEAR AREAS.



TREE PLANTING AND GUYING DETAIL



SMALL TREE SUPPORT DETAIL



PLANTING DETAIL

**GENERAL LANDSCAPE NOTES:**

- ALL PLANT MATERIAL IS TO BE FLORIDA NO. 1 OR BETTER. FLORIDA GRADES AND STANDARDS FOR NURSERY PLANTS, EDITION 2022.
- ALL PLANTING BEDS TO BE TOPPED WITH 2\"/>

- LANDSCAPE CONTRACTOR TO COORDINATE HIS WORK WITH THE GENERAL CONTRACTOR, THE IRRIGATION CONTRACTOR, AND THE ELECTRICAL CONTRACTOR.
- ALL EXISTING PLANT MATERIAL TO REMAIN SHALL BE PROTECTED. (REFER TO DEMOLITION PLAN.)
- ALL TREES TO BE RELOCATED WILL GET ROOT PRUNED 30 DAYS MIN. (OR MORE IF REQUIRED BY THE SPECIES). UPON RELOCATION, THIN OUT (UNDER LANDSCAPE ARCHITECT'S DIRECTION) 30% OF THE TREE CANOPY TO BE RELOCATED.
- AFTER REMOVAL OR RELOCATION OF EXISTING TREES AND PALMS, BACKFILL TREE PIT WITH PLANTING SOIL AND SOD DISTURBED AREA, AS REQUIRED.
- ALL TREES ON SOD AREAS SHALL RECEIVE A MULCH RING 2\"/>

**TREE BRACING NOTES:**

- 2\"/>

PLANT LIST			
TREES & PALMS			
Native	Qty	Botanical/Common Name	Specifications
N	7	Bambusa multiplex Asian Lemon Bamboo	25 - 30 Gal 12H# Full 10-15 Canes Min (See General Note #1 Below)
N	1	Bursera arborea Verawood	12-14\"/>

SHRUBS & GROUNDCOVERS			
Native	Qty	Botanical/Common Name	Specifications
N	18	Azalea 'Vincolor'	7 Gal.
Y	20	Chrysobalanus icaco 'Horizontal'	7 Gal @ 30\"/>

MISCELLANEOUS			
Native	Qty	Botanical/Common Name	Specifications
Y	571	Erigeron Zoysia Sod	Alt. Cashmere
Y	340	St. Augustine Sod	Right-of-Way Sod

**GENERAL NOTES**  
1. Landscape Contractor shall provide photographic submittal with person for scale reference to Landscape Architect for review and approval prior to purchasing plants.

**CITY OF MIAMI BEACH**

**LANDSCAPE LEGEND**

INFORMATION REQUIRED TO BE PERMANENTLY AFFIXED TO PLANS  
Zoning District: RM-2 Lot Area: 15,000 S.F. Acres: 0.344

OPEN SPACE	REQUIRED/ALLOWED	PROVIDED
A. Square feet of required Open Space as indicated on site plan: Lot Area = 15,000 s.f. x 30% = 4,500 s.f.	4,500 S.F.	9,845 S.F.
B. Square feet of parking lot open space required as indicated on site plan: Number of parking spaces: N/A x 10 s.f. parking space =	N/A	N/A
C. Total square feet of landscaped open space required: A+B=	4,500 S.F.	9,845 S.F.

LAWN AREA CALCULATION	REQUIRED/ALLOWED	PROVIDED
A. Square feet of landscaped open space required	4,500 S.F.	9,845 S.F.
B. Maximum lawn area (sod) permitted: 30% x 4,500 s.f.	1,350 S.F.	571 S.F.

TREES	REQUIRED/ALLOWED	PROVIDED
A. Number of trees required per lot or net lot acres, less existing number of trees meeting minimum requirements: 28 trees x 0.344 net lot acres - number of existing trees =	10	15
B. % Natives required: Number of trees provided x 30% =	5	13
C. % Low maintenance / drought and salt tolerant required: Number of trees provided x 50% =	7	13
D. Street Trees (maximum average spacing of 20' o.c.) 100 linear feet along street divided by 20' =	5	1 NEW
E. Street tree species allowed directly beneath power lines: (maximum average spacing of 20' o.c.): N/A linear feet along street divided by 20' =	N/A	N/A

SHRUBS	REQUIRED/ALLOWED	PROVIDED
A. Number of shrubs required: Sum of lot and street trees required x 12=	180	837
B. % Native shrubs required: Number of shrubs provided x 50%=	419	609

LARGE SHRUBS OR SMALL TREES	REQUIRED/ALLOWED	PROVIDED
A. Number of large shrubs or small trees required: Number of required shrubs x 10%=	18	50
B. % Native large shrubs or small trees required: Number of large shrubs or small trees provided x 50%=	25	50



NOT FOR CONSTRUCTION

AS APPROVED ON HPB MEETING OF  
JULY 14, 2020 - FILE No. HPB19-0354

**revuelta**  
architecture  
international

Miami  
Santiago, Chile  
revuelta-architecture.com  
2950 SW 27TH AVE. SUITE 1110  
MIAMI, FL 33135  
T: 305 854 9299  
F: 305 854 9882  
WWW.DAVIDODISHOO.COM

**SANCTUARY HOTEL**  
1745 JAMES AVENUE  
MIAMI BEACH, FLORIDA 33139

Revisions  
NOT APPLICABLE DURING 10/05/2020

Owner Information  
**1745 JAMES LLC**  
1111 Kane Concourse  
Bay Harbor Islands Florida  
33140  
(305) 763-8166  
Consultant  
**DAVID O. INC.**  
LANDSCAPE ARCHITECTURE  
2996 SW 28TH LN  
MIAMI, FL 33133  
P: 305 854 9299 | F: 305 854 9882  
WWW.DAVIDODISHOO.COM

Digitally signed by David J. Odishoo  
Date: 2022.10.05 19:38:24 -04'00'  
David J. Odishoo  
RLA-6866899

HPB FINAL SUBMITTAL  
Date: 10/05/2020  
Scale: AS SHOWN  
Project No.: 20002  
Sheet Name: PLANTING IMAGES  
Sheet No.:

**LP-301**



VERAWOOD TREE



SIMPSON STOPPER TREE



BRIDALVEIL TREE



GUMBO LIMBO TREE



BLACK IRONWOOD TREE



SATINLEAF TREE



CABADA PALM



SABAL PALM - CURVED TRUNK



SABAL PALM - BOOTED TRUNK



LICUALA PALM



SILVER BUTTWOOD SHRUB



SPANISH STOPPER SHRUB



COCOPLUM 'RED TIP'



PHILODENDRON 'WEEKS RED HYBRID'



PHILODENDRON 'BURL MARX'



WILD COFFEE SHRUB



BOSTON FERN



GOLDEN CREEPER



COCOPLUM 'HORIZONTAL'



DWARF FAKAHATCHEE GRASS



WHITE FOUNTAIN GRASS



CLUSIA ROSEA 'NANA'



DIOON MEJIAE & BROMELIAD 'FIREBALL'



BROMELIAD 'VINICOLOR'

These Design And Drawings Are The Copyrighted Property Of Revuelta Architecture International P.A. and May Not Be Reproduced Except With Specific Written Consent of the Architect. The Distribution Of These Design And Drawings To Other Parties Without The Written Consent Of Revuelta Architecture International P.A. Is Strictly Prohibited. Revuelta Architecture International P.A. 2950 SW 27TH AVE. SUITE 1110 MIAMI, FL 33135



NOT FOR CONSTRUCTION

AS APPROVED ON HPB MEETING OF  
JULY 14, 2020 - FILE No. HPB19-0354

revuelta  
architecture  
international

Miami  
San Diego, Chile  
revuelta-architecture.com

2550 SW 97TH AVE  
SUITE 110  
MIAMI FL 33133  
T: 305.550.5000  
F: 305.550.5000

Project

**SANCTUARY HOTEL**  
1745 JAMES AVENUE  
MIAMI BEACH, FLORIDA 33139

Revisions  
NOT APPLICABLE (N/A) 1/30/2022

Owner Information  
**1745 JAMES LLC**  
1111 Kane Concourse  
Bay Harbor Islands, Florida  
33140  
(305) 763-8166

Consultant  
**DAVID O. INC.**  
LANDSCAPE ARCHITECTURE  
2686 SW 28TH LN  
MIAMI, FL 33133  
P: 305.854.9299 | F: 305.854.9882  
WWW.DAVIDODISHOO.COM

Digitally signed by  
David J. Odishoo  
Date:  
2022.10.05  
19:38:56  
-04'00'  
David J. Odishoo  
RLA4566959

HPB FINAL SUBMITTAL

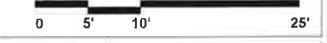
Date  
10/05/2020  
Scale  
AS SHOWN  
Project No.  
20002  
Sheet Name  
WEST ELEVATION

Sheet No.  
**LE-100**



**WEST ELEVATION**

SCALE: 1/8" = 1'-0"





NOT FOR CONSTRUCTION

These Design And Drawing Are The Copyrighted Property Of Revuelta Architecture International, P.A. and May Not Be Reproduced Except with Specific Written Consent of the Architect. The Designer Shall Not Be Responsible For Construction Methods, Materials, or Workmanship. The Designer Shall Not Be Responsible For Construction Methods, Materials, or Workmanship. The Designer Shall Not Be Responsible For Construction Methods, Materials, or Workmanship.

AS APPROVED ON HPB MEETING OF  
JULY 14, 2020 - FILE No. HPB19-0354

**revuelta**  
architecture  
international

Miami  
San Diego, Chile  
revuelta-architecture.com  
2050 SW 57th Ave  
Suite 113  
Miami, FL 33139  
Tel: 305 854 9299  
Fax: 305 854 9882

**SANCTUARY HOTEL**  
1745 JAMES AVENUE  
MIAMI BEACH, FLORIDA 33139

Revisions  
NOT APPLICABLE (N/A) 1/18/2020

Owner Information  
**1745 JAMES LLC**  
1111 Kane Concourse  
Bay Harbor Islands, Florida  
33140  
(305) 763-8166  
Consultant  
**DAVID O. INC.**  
LANDSCAPE ARCHITECTURE  
2686 SW 28TH LN  
MIAMI, FL 33133  
P: 305 854 9299 | F: 305 854 9882  
WWW.DAVIDODISHOO.COM

Digitally  
signed by  
David J.  
Odishoo  
Date:  
2022.10.05  
19:39:32  
-04'00'  
David J. Odishoo  
RLA-6666969

HPB FINAL SUBMITTAL  
Date  
10/05/2020  
Scale  
AS SHOWN  
Project No.  
20002  
Sheet Name  
NORTH ELEVATION  
Sheet No.

**LE-101**



JAMES AVENUE

**NORTH ELEVATION**

SCALE: 1/8" = 1'-0"



WEST PROPERTY LINE

EAST PROPERTY LINE

3'-9" ALLOWABLE PROJECTION

15' REAR SETBACK

20' FRONT SETBACK

5'-0" ALLOWABLE PROJECTION

ASIAN LEMON BAMBOO  
THATCH PALM

FICUS REPENS

SPANISH STOPPER LARGE SHRUBS  
SABAL PALM - BOOTED TRUNK

SABAL PALM - BOOTED TRUNK  
SATINLEAF TREE BEYOND  
SABAL PALM - CURVED TRUNK

CABADA PALM (MULTI-TRUNK)  
SPANISH STOPPER LARGE SHRUBS  
GUMBO LIMBO TREE BEYOND

CABADA PALM (MULTI-TRUNK)  
SIMPSON STOPPER TREE  
COCOPLUM 'RED TIP' SHRUB

EL +82'8" N.G.V.D.  
TOP OF ROOF LEVEL

EL +61'0" N.G.V.D.  
POOL DECK

EL +59'0" N.G.V.D.  
ROOF LEVEL

EL +48'4" N.G.V.D.  
LEVEL 5

EL +38'8" N.G.V.D.  
LEVEL 4

EL +29'0" N.G.V.D.  
LEVEL 3

EL +19'4" N.G.V.D.  
LEVEL 2

EL +9'0" N.G.V.D.  
GROUND LEVEL

EL +5'3" N.G.V.D.  
TOWN OF THE ROAD

18'-8"

23'-8"

5'-0"

10'-8"

9'-8"

77'-5"

9'-5"

50'-0"

9'-5"

10'-4"

1'-0"

EL +82'8" N.G.V.D.  
TOP OF ROOF LEVEL

EL +44'0" N.G.V.D.  
POOL DECK

EL +59'0" N.G.V.D.  
ROOF LEVEL

EL +48'4" N.G.V.D.  
LEVEL 5

EL +38'8" N.G.V.D.  
LEVEL 4

EL +29'0" N.G.V.D.  
LEVEL 3

EL +19'4" N.G.V.D.  
LEVEL 2

EL +9'0" N.G.V.D.  
GROUND LEVEL

EL +5'3" N.G.V.D.  
CROWN OF THE ROAD



NOT FOR CONSTRUCTION

AS APPROVED ON HPB MEETING OF  
JULY 14, 2020 - FILE No. HPB19-0354

**revuelta**  
architecture  
international

Miami  
Santiago, Chile  
revuelta-architecture.com

2050 SW 27TH AVE  
SUITE 113  
MIAMI, FL 33135  
TEL: 305 590 5000  
WWW.REVUELTA.COM

**SANCTUARY HOTEL**  
1745 JAMES AVENUE  
MIAMI BEACH, FLORIDA 33139

Revisions  
NOT APPLICABLE (NA)

Owner Information  
**1745 JAMES LLC**  
1111 Kane Concourse  
Bay Harbor Islands, Florida  
33140  
(305) 763-8166  
Consultant  
**DAVID O. INC.**  
LANDSCAPE ARCHITECTURE  
2686 SW 28TH LN  
MIAMI, FL 33133  
P: 305 854 9299 | F: 305 854 9882  
WWW.DAVIDODISHOO.COM

Digitally  
signed by  
David J.  
Odishoo  
Date:  
2022.10.05  
19:40:08  
-04'00"  
David J. Odishoo  
RLA-6565968

**HPB FINAL SUBMITTAL**  
Date  
10/05/2020  
Scale  
AS SHOWN  
Project No.  
20002  
Sheet Name  
EAST ELEVATION  
Sheet No.

**LE-102**



**EAST ELEVATION**  
SCALE: 1/8" = 1'-0"  
0 5' 10' 25'



NOT FOR CONSTRUCTION

These design and drawings are the copyrighted property of Revuelta Architecture International P.A. and may not be reproduced, stored in a retrieval system, or transmitted in any form or by any means, electronic, mechanical, photocopying, recording, or by any information storage and retrieval system, without the prior written permission of Revuelta Architecture International P.A. All rights reserved. Date: 10/05/2020

AS APPROVED ON HPB MEETING OF  
JULY 14, 2020 - FILE No. HPB19-0354

**revuelta**  
architecture  
international

Maria  
Santiago, Chile  
revuelta-architecture.com  
2050 SW 27TH AVE  
SUITE 1105  
MIAMI, FL 33135  
TEL: 305.854.9299  
F: 305.854.9882

**SANCTUARY HOTEL**  
1745 JAMES AVENUE  
MIAMI BEACH, FLORIDA 33139

Revisions  
101 APPLICABLE (S) 10506222

**Owner Information**  
1745 JAMES LLC  
1111 Kane Concourse  
Bay Harbor Islands, Florida  
33140  
(305) 763-8166  
**Consultant**  
DAVID O. INC.  
LANDSCAPE ARCHITECTURE  
2896 SW 28TH LN  
MIAMI, FL 33133  
P: 305.854.9299 | F: 305.854.9882  
WWW.DAVIDODISHOO.COM

Digitally  
signed by  
David J.  
Odishoo  
Date:  
2022.10.05  
19:40:47  
-04'00'  
David J. Odishoo  
RLA-6689899

HPB FINAL SUBMITTAL

Date  
10/05/2020  
Scale  
AS SHOWN  
Project No.  
20092  
Sheet Name  
SOUTH ELEVATION  
Sheet No.

**LE-103**



**SOUTH ELEVATION**  
SCALE: 1/8" = 1'-0"  
0 5' 10' 25'

BRIDAVEIL TREE  
CABADA PALM (MULTI-TRUNK)  
SIMPSON STOPPER TREE  
SPANISH STOPPER LARGE SHRUBS  
SABAL PALM - BOOTED TRUNK  
GUMBO LIMBO TREE BEYOND  
SPANISH STOPPER LARGE SHRUBS  
SABAL PALM - CURVED TRUNK  
SABAL PALM - BOOTED TRUNK  
SATINLEAF TREE BEYOND  
SABAL PALM - BOOTED TRUNK  
SPANISH STOPPER LARGE SHRUBS

EL. +87'-8" N.G.V.D. TOP OF ROOF LEVEL  
EL. +84'-0" N.G.V.D. POOL DECK  
EL. +59'-0" N.G.V.D. ROOF LEVEL  
EL. +48'-4" N.G.V.D. LEVEL 5  
EL. +38'-8" N.G.V.D. LEVEL 4  
EL. +29'-0" N.G.V.D. LEVEL 3  
EL. +19'-4" N.G.V.D. LEVEL 2  
EL. +9'-0" N.G.V.D. GROUND LEVEL  
EL. +5'-3" N.G.V.D. CROWN OF THE ROAD  
EL. +82'-8" N.G.V.D. TOP OF ROOF LEVEL  
EL. +64'-0" N.G.V.D. POOL DECK  
EL. +59'-0" N.G.V.D. ROOF LEVEL  
EL. +48'-4" N.G.V.D. LEVEL 5  
EL. +38'-8" N.G.V.D. LEVEL 4  
EL. +29'-0" N.G.V.D. LEVEL 3  
EL. +19'-4" N.G.V.D. LEVEL 2  
EL. +9'-0" N.G.V.D. GROUND LEVEL  
EL. +5'-3" N.G.V.D. CROWN OF THE ROAD



NOT FOR CONSTRUCTION

These Plans and Drawings Are the Copyrighted Property of Revuelta Architecture International, P.A. and May Not Be Reproduced Except with Specific Written Consent of the Architect. The Architect Shall Not Be Responsible for Construction Methods or Details Not Shown on These Plans and Drawings. The Architect's Liability Shall Be Limited to the Design of the Building and Not to the Construction of the Building. The Architect's Liability Shall Not Be Limited to the Design of the Building and Not to the Construction of the Building. The Architect's Liability Shall Not Be Limited to the Design of the Building and Not to the Construction of the Building.

AS APPROVED ON HPB MEETING OF JULY 14, 2020 - FILE No. HPB19-0354

revuelta  
architecture  
international

Miami  
Santiago, Chile  
revuelta-architecture.com

2650 SW 27th Ave  
Suite 113  
Miami, FL 33133  
Tel: 305.854.9299  
Fax: 305.854.9882

Project

**SANCTUARY HOTEL**  
1745 JAMES AVENUE  
MIAMI BEACH, FLORIDA 33139

Revisions  
NOT APPLICABLE DATE 10/05/2022

Owner Information  
**1745 JAMES LLC**  
1111 Kane Concourse  
Bay Harbor Islands, Florida  
33140  
(305) 763-8166

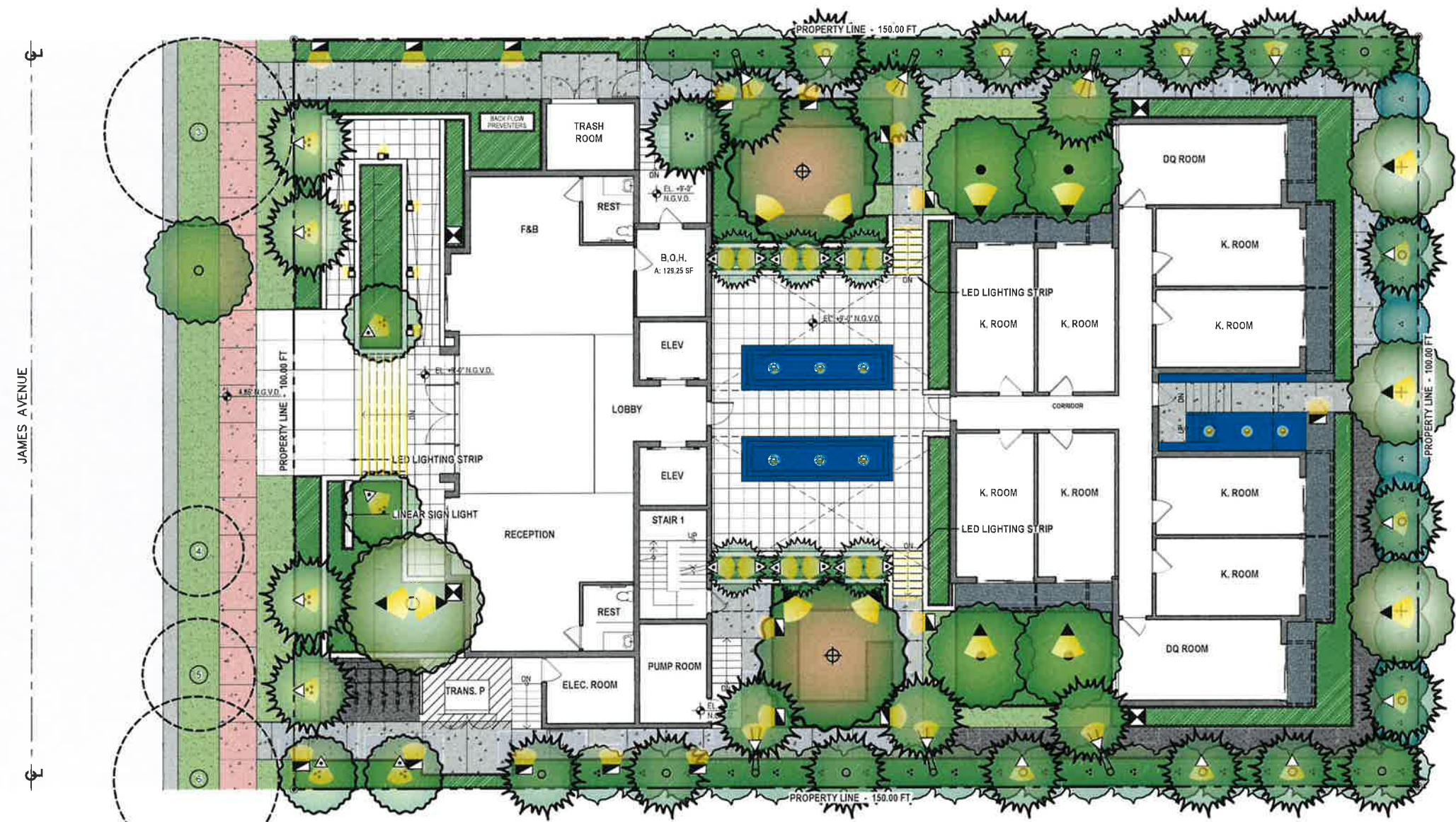
Consultant  
**DAVID O. INC.**  
LANDSCAPE ARCHITECTURE  
2685 SW 25TH LN  
MIAMI, FL 33133  
P. 305.854.9299 | F. 305.854.9882  
WWW.DAVIDODISHOO.COM

Digitally signed by David J. Odishoo  
Date: 2022.10.05 19:41:29 -04'00'  
David J. Odishoo  
RLA-666966

HPB FINAL SUBMITTAL

Date: 10/05/2022  
Scale: AS SHOWN  
Project No.: 20002

Sheet Name: LIGHTING PLAN - CANOPY  
GROUND LEVEL - CANOPY  
Sheet No.: **LL-100**



QTY	SYMBOL	DESCRIPTION
17		PATHLIGHTS
14		8 W UPLIGHT, 30° BEAM SPREAD
13		12 W UPLIGHT, 60° BEAM SPREAD

QTY	SYMBOL	DESCRIPTION
6		8 W UPLIGHT, 30° BEAM WITH STRAPS ON TRUNK
12		4 W UPLIGHT, 30° BULLYTE UPLIGHTS
185 L.F.		LED LIGHTING STRIP IN RECESSES.

QTY	SYMBOL	DESCRIPTION
4		TRANSFORMER
1		LINEAR SIGN LIGHT
6		NICHE LIGHTS AT RAMP

QTY	SYMBOL	DESCRIPTION
9		WATER FEATURE LIGHTS

**LIGHTING PLAN - GROUND LEVEL - CANOPY**  
SCALE: 1/8" = 1'-0"





NOT FOR CONSTRUCTION  
 THESE DESIGN AND DRAWINGS ARE THE COPYRIGHTED PROPERTY OF REVUELTA ARCHITECTURE INTERNATIONAL, P.A. AND MAY NOT BE REPRODUCED, COPIED, OR TRANSMITTED IN ANY FORM OR BY ANY MEANS, ELECTRONIC OR MECHANICAL, INCLUDING PHOTOCOPYING, RECORDING, OR BY ANY INFORMATION STORAGE AND RETRIEVAL SYSTEM, WITHOUT THE WRITTEN PERMISSION OF REVUELTA ARCHITECTURE INTERNATIONAL. ANY UNAUTHORIZED REPRODUCTION OR USE OF THESE DRAWINGS IS STRICTLY PROHIBITED.

AS APPROVED ON HPB MEETING OF  
 JULY 14, 2020 - FILE No. **HPB19-0354**

**revuelta**  
 architecture  
 international

Miami  
 Santiago, Chile  
 revueltaarchitecture.com  
 1950 SW 27TH AVE  
 SUITE 110  
 MIAMI, FL 33135  
 P: 305 580 8000  
 F: 305 580 8040

**SANCTUARY HOTEL**  
 1745 JAMES AVENUE  
 MIAMI BEACH, FLORIDA 33139

Revisions  
 NOT APPLICABLE (N/A) 13072022

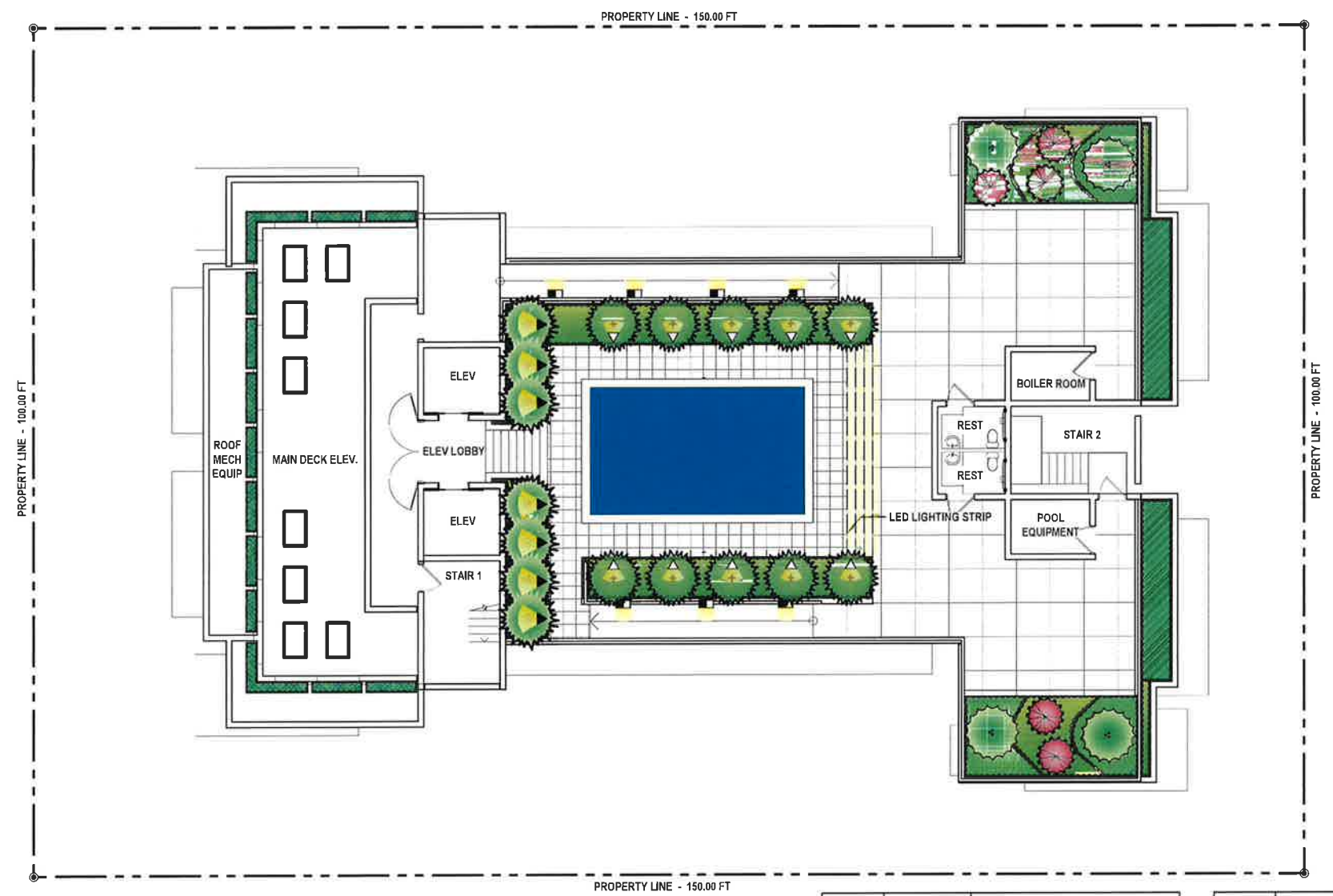
**Owner Information**  
**1745 JAMES LLC**  
 1111 Kane Concourse  
 Bay Harbor Islands, Florida  
 33140  
 (305) 763-8166  
**Consultant**  
**DAVID O. INC.**  
 LANDSCAPE ARCHITECTURE  
 2685 SW 28TH LN  
 MIAMI, FL 33133  
 P 305 854 9299 | F 305 854 9882  
 WWW.DAVIDODISHOO.COM

Digitally  
 signed by  
 David J.  
 Odishoo  
 Date:  
 2022.10.05  
 19:42:12  
 -04'00'  
 David J. Odishoo  
 RLA-6698969

**HPB FINAL SUBMITTAL**

Date  
 10/05/2020  
 Scale  
 AS SHOWN  
 Project No.  
 20002

Sheet Name  
 LIGHTING PLAN  
 POOL DECK LEVEL  
 Sheet No.  
**LL-200**



QTY	SYMBOL	DESCRIPTION
136 L.F.	---	LED LIGHTING STRIP IN RECESSES.
1	⊠	TRANSFORMER
7	■	NICHE LIGHTS AT RAMP

QTY	SYMBOL	DESCRIPTION
10	◁	8 W UPLIGHT, 30° BEAM SPREAD
7	◀	12 W UPLIGHT, 60° BEAM SPREAD

**LIGHTING PLAN - POOL DECK LEVEL**

SCALE: 1/8" = 1'-0"

