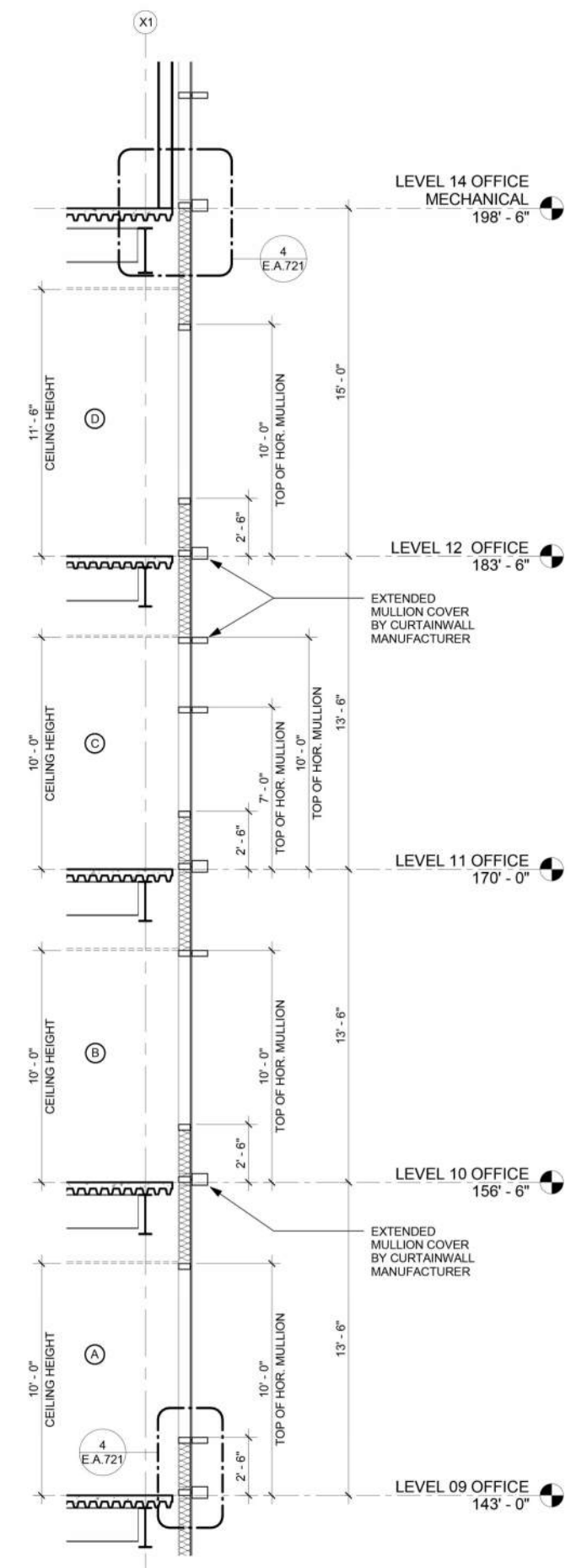


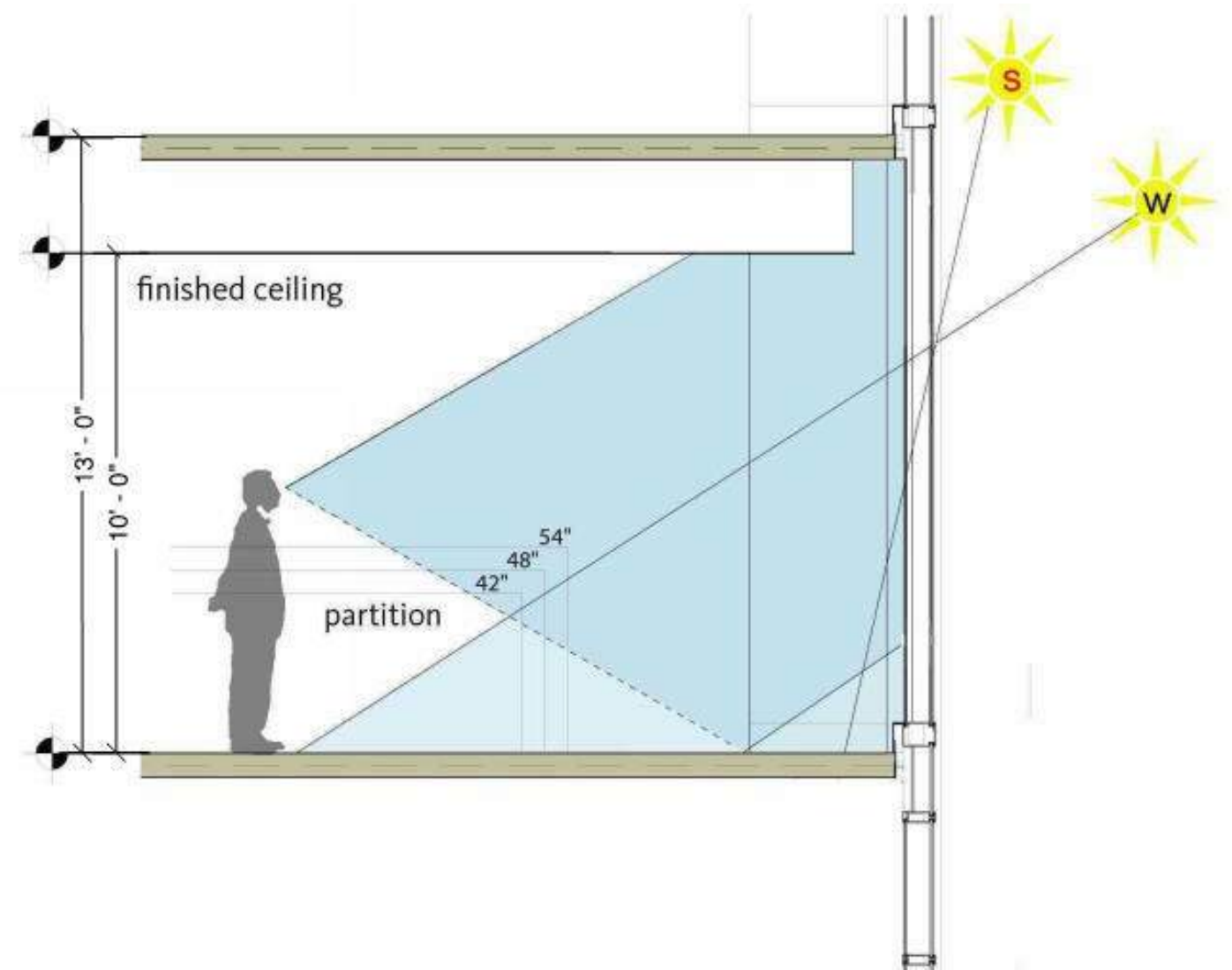


CLASS A OFFICE TOWER: 600 BRICKELL  
OFFICE FLOOR TO FLOOR HEIGHT: 13' - 6"





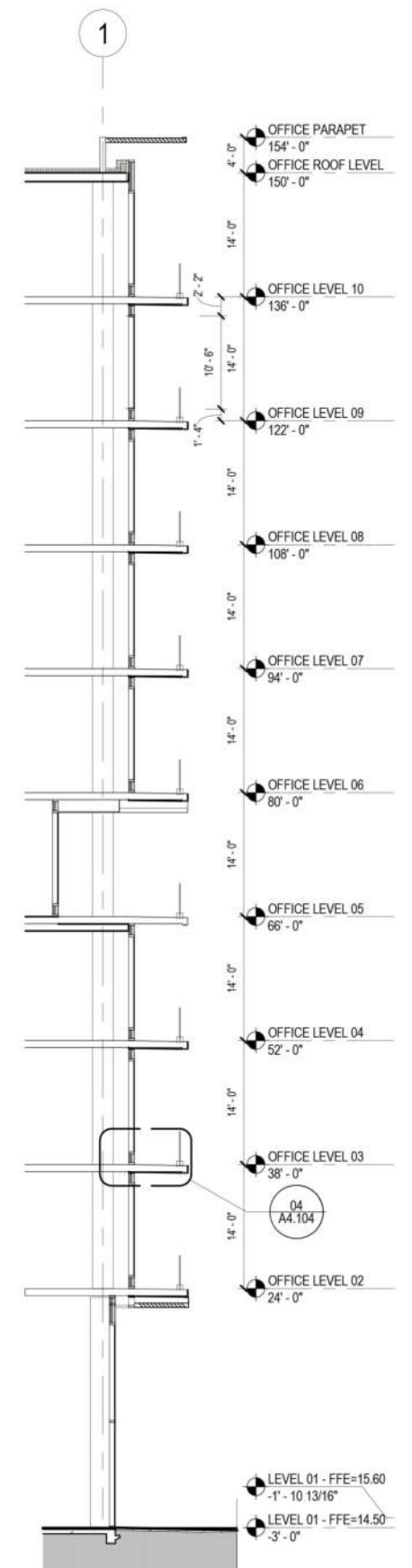
CLASS A OFFICE TOWER: 600 BRICKELL  
OFFICE FLOOR TO FLOOR HEIGHT: 13' -0"



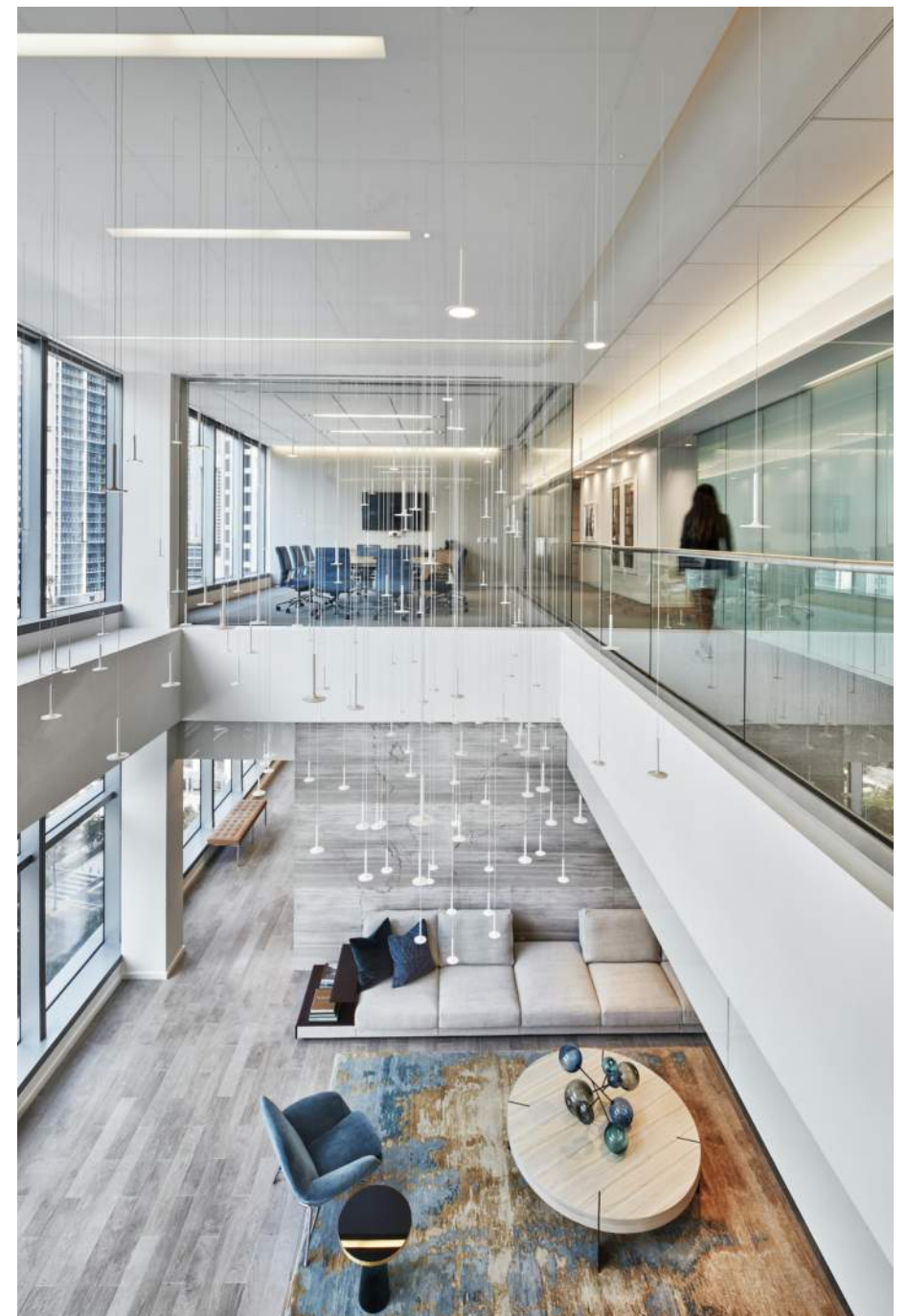




CLASS A OFFICE TOWER: 545 WYN  
 OFFICE FLOOR TO FLOOR HEIGHT: 14' -0"







CLASS A OFFICE TOWER: THREE BRICKELL CITY CENTER  
TENANT: AKERMAN  
FLOOR TO FLOOR HEIGHT: 13' - 6"  
FINISHED CEILING HEIGHT: 10'-0"





© Anni Rao via CTBUH

CLASS A OFFICE TOWER: 600 BRICKELL AVENUE  
TENANT: SITEL  
FLOOR TO FLOOR HEIGHT: 13'-6"  
FINISHED CEILING HEIGHT: 10'-0"

