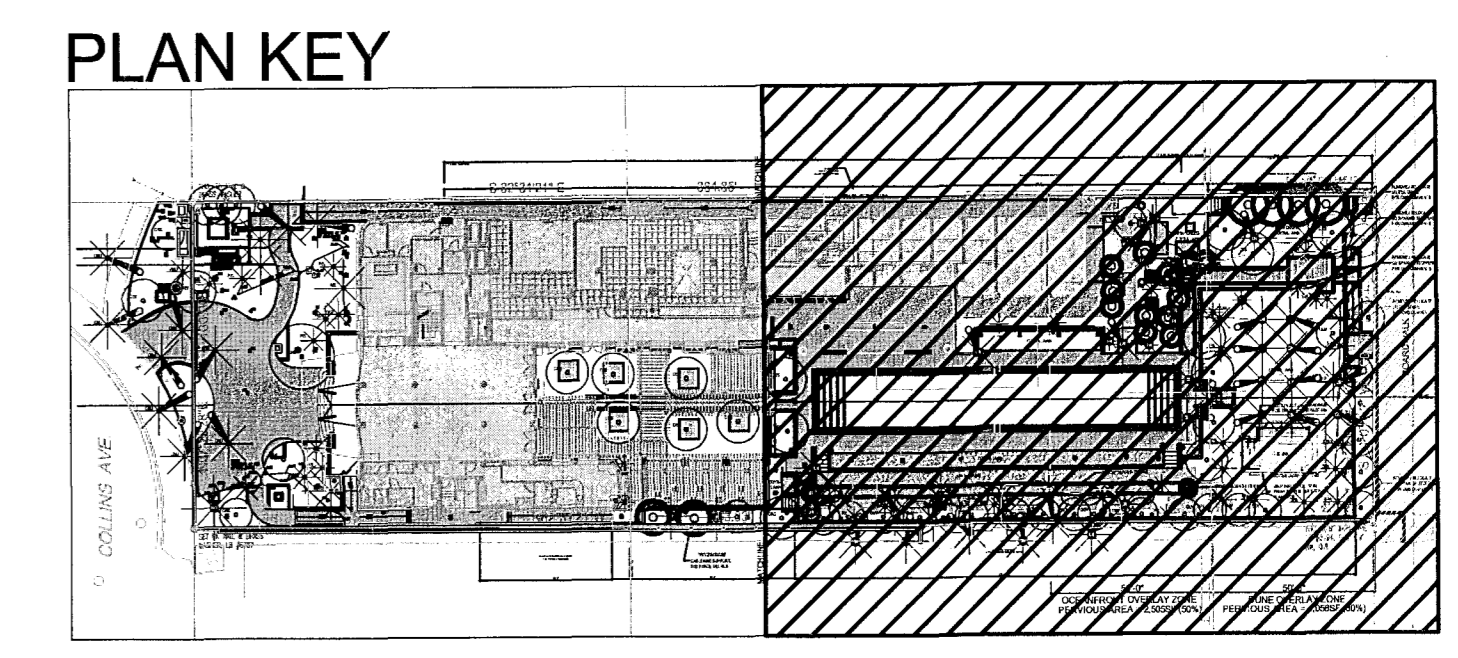
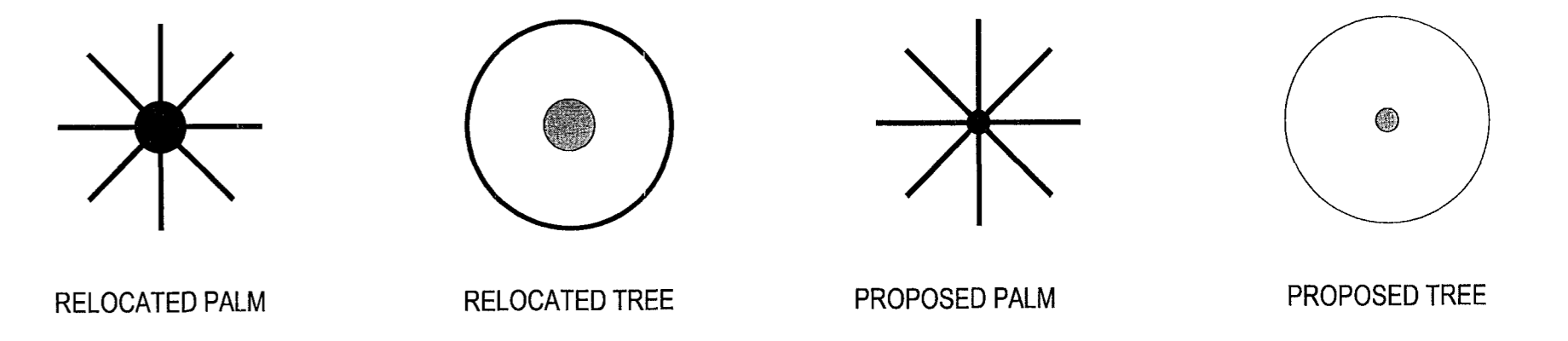


SOHO BEACH HOUSE PLANT LIST
15-Jan-10

QTY	ABRV./BOTANICAL NAME	COMMON NAME	SPECIFICATIONS
1	CRX <i>Clusia rosea</i>	Autograph Tree	36" DBH, 14' ht. x 14 sp.
1	CRS <i>Clusia rosea</i>	Autograph Tree	18" - 16" ht. x 16" - 18" sp. Specimen (Landward of CCCL)
2	CRX <i>Clusia rosea</i>	Autograph Tree	10" - 12" ht. x 10" sp., 12" DBH
26	CUN <i>Coccothraux vilifera</i>	Sea Grape	12-14 ht. x 12" sp.
3	CER <i>Conocarpus erectus</i>	Green Buttonwood	12" - 14" ht. x 8" sp.
14	CES <i>Conocarpus erectus var. sericeus</i>	Silver Buttonwood	12" - 14" ht. x 10" - 12" sp. Multi-trunk, 4 - 6" caliper, 7' CT
2	CEY <i>Conocarpus erectus var. sericeus</i>	Silver Buttonwood	12" - 14" ht. x 10" - 12" sp. Multi-trunk, 2 - 3" caliper
1	PAQ <i>Pachira aquatica</i> (See NOTE 2)	Water Chestnut	10" - 12" ht. x 8" x 8" sp.
PALMS			
10	CNU <i>Coccothraux vilifera</i>	Coconut Palm	
2	CMA <i>Coccothraux vilifera</i>	Peticoat Palm	6' - 8' ht.
3	LLO <i>Lantana loddigesii</i>	Blue Lantana Palm	14" ht., 8" GW
2	LMX <i>Leucostemum morrisii</i>	Silver Thatch Palm	6" G.W.
7	PEL <i>Ptychosperma elegans</i>	Solitaire Palm	4 @ 14" - 16" ht. (singles) 4 @ 14" - 16" ht. multiple trunks
4	REL <i>Roystonia elata</i>	Royal Palm	Double trunk
11	SPA <i>Sabal palmetto</i>	Cabbage Palm	14" Busted trunk, 18" DBH (Landward of CCCL)
20	TRX <i>Thrinax radiata</i>	Green Thatch Palm	14" ht., single and multiple trunks
4	VMO <i>Veitchia montgomeryana</i>	Montgomery Palm	18" - 24" ht., 6" - 8" DBH
NATIVE UNDERSTORY SHRUBS			
67	CC <i>Capparis cynophallophora</i>	Jamaica Caper	6" - 8" ht. x 6" - 8" sp.
24	EF <i>Eugenia foetida</i>	Spanish Stopper	10" - 12" ht. x 4" sp., full to base
ACCENTS			
13	AD <i>Aechmea 'Dean'</i>	Same	
44	CG <i>Clusia guttifera 'Nana'</i>	Same	3 gal.
13	CF <i>Cordyline frutescens 'Black Magic'</i>	Cordyline	4" - 6" ht. x 4" - 8" sp., Full
4	CA <i>Crinum augustum 'Queen Enima'</i>	Same	6" ht. x 6" sp.
3	HC <i>Heliconia caribaea</i> (See NOTE 2)	Same	8" - 10" ht. x 6" - 8" sp., Pale Yellow Flowers
1	HR <i>Heliconia rostrata</i> (See NOTE 2)	Lobster Claw	8" - 9" ht. x 8" sp.
26	ME <i>Monstera deltoidea</i> (See NOTE 1)	Mexican Breadfruit	36" x 36"
1	PS <i>Philodendron</i>	TBD	Specimen Philodendron
85	PR <i>Philodendron rojo 'Congo'</i>	Same	3 gal.
5	PW <i>Philodendron 'Weeks Hybrid'</i> (See NOTE 2)	Same	36" x 36" (See NOTE 1)
31	TD <i>Tripsacum dactyloides</i>	Fakahatchee Grass	36" x 36"
18	UP <i>Utricularia paniculata</i>	Sea Oats	3 gal. 24" o.c.
GROUNDCOVERS			
1000	AV <i>Aloe vera</i>	Medicinal Aloe	8" OC
19	CI <i>Chrysobalanus icaco</i>	Horizontal Coccolup	24" x 24"
1110	EL <i>Ernoea littoralis</i>	Golden Creeper	24" OC
60	GP <i>Gaillardia pulchella</i>	Blanket Flower	12" OC
78	HL <i>Hymenocallis latifolia</i>	Spider Lily	36" OC
353	NE <i>Neoregelia 'Bossa Nova'</i> (See NOTE 1)	Same	12" OC
685	PB <i>Philodendron 'Burla Marx'</i> (See NOTE 1)	Same	36" OC
584	PO <i>Portulaca oleracea</i>	Sea Purslane	12" OC
780	PO <i>Portulaca oleracea</i> (See NOTE 4)	Sea Purslane	8" OC
19	SW <i>Sansevieria 'Whales Fin'</i>	Same	18" x 18"
80	ZP <i>Zamia pumila</i>	Coontie	3 gal. 18" OC
VINES			
1	BA <i>Bougainvillea 'Alabama Sunset'</i>	Same	7 gal. train to trunk of Coconut Palm
1	PV <i>Pyrostegia venusta</i>	Flame Vine	
21	SV <i>Solandra</i>	Chalk Vine	
18	IPC <i>Ipomoea pes-caprae</i>	Railroad Vine	
14	SF <i>Stephanotis floribunda</i>	Bridal Wreath	
RELOCATES			
1	CR <i>Clusia rosea</i>	Autograph Tree	Relocated from on-site
2	SG <i>Coccothraux vilifera</i>	Sea Grape	Relocated from on-site
31	CUN <i>Coccothraux vilifera</i>	Coconut Palm	Relocated from on-site
4	CER <i>Conocarpus erectus</i>	Green Buttonwood	Relocated from on-site
12	BR <i>Jacquinia arborea</i>	Bracelet/Wood	Relocated from on-site (8" ht x 5" sp.)
1	WD <i>Phoenix sylvesteris</i>	Wild Date Palm	Relocated from on-site
10	TR <i>Thrinax radiata</i>	Green Thatch Palm	Relocated from on-site
MISC.			
Zoyzia Sod (2620 sqft)			
Reinforced Zoyzia Sod (815 sqft) - Install per manufacturers instructions			
Fertilizer: Florikote Coated Magnesium, Florikote F3-5-11, Florikote Coated Micronutrients. Supplier: Florikan (800) 322-8866			
Accent plant allowance \$5,000 W.P.A. total (W.P.A. = Wholesale Purchase Allowance) Species to be determined by Landscape Architect			
Coquina SV #2, 6" min. over well compacted sub-grade or existing beach sand. Supplier: Sutton Brick & Stone (954) 472-7646			
Mulch - 2" deep Florimulch topped with 1" Pinus elliotii needles in planting areas			
Soil Amendments: Add organic amendment per lab recommendation as topsoil layer on uncompacted fill, 8" typ. depth varies. See plant schedule.			
Mix organic amendment with existing backfill to depth indicated in plant schedule.			
NOTES			
NOTE 1 Create an organic layer of 4-inches and 2-inches of a transitional zone 50% organic and 50% existing uncompacted fill			
NOTE 2 Plant to be located in field by Landscape Architect			
NOTE 3 Contractor to provide irrigation to all turf areas.			
NOTE 4 Quantity reflects Sea Purslane at 6" o.c. on tiki bar rooftop only.			



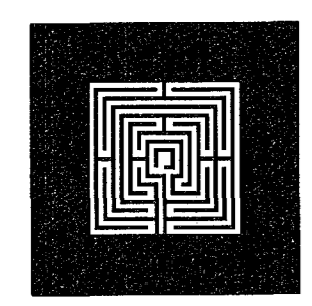
PLANT SYMBOL KEY



NOTE: FINAL LOCATION OF PLANTS TO BE DETERMINED IN THE FIELD BY LANDSCAPE ARCHITECT. CONTRACTOR TO STAKE TREE LOCATIONS AND CONFIRM SOIL DEPTH / UTILITY CONFLICTS, PRIOR TO DIGGING. CONTRACTOR TO SCHEDULE REVIEW OF FIELD CONDITIONS WITH LANDSCAPE ARCHITECT TO ADJUST TREE LOCATION TO RESOLVE ANY CONFLICTS

PARTIAL CANOPY PLANTING PLAN

SCALE: 1/8"=1'-0"



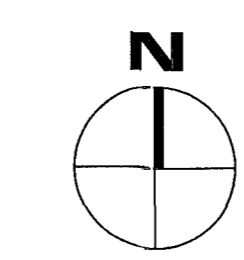
ALLANT. SHULMAN ARCHITECT, P.A.
(AR 0012763)
100 NE 38TH STREET, SPACE #2 MIAMI, FL 33137
TEL: 305.438.0609 FAX: 305.438.0170

JUNGLES
LANDSCAPE ARCHITECT
RAYMOND JUNGLES INCORPORATED
Landscape Architect ASLA
242 SW 5th Street, Miami, FL 33130
PH: (305) 858.6777 FAX: (305) 855.0742
www.raymondjungles.com

REVISIONS

REVISIONS

[Signature]
10.19.10

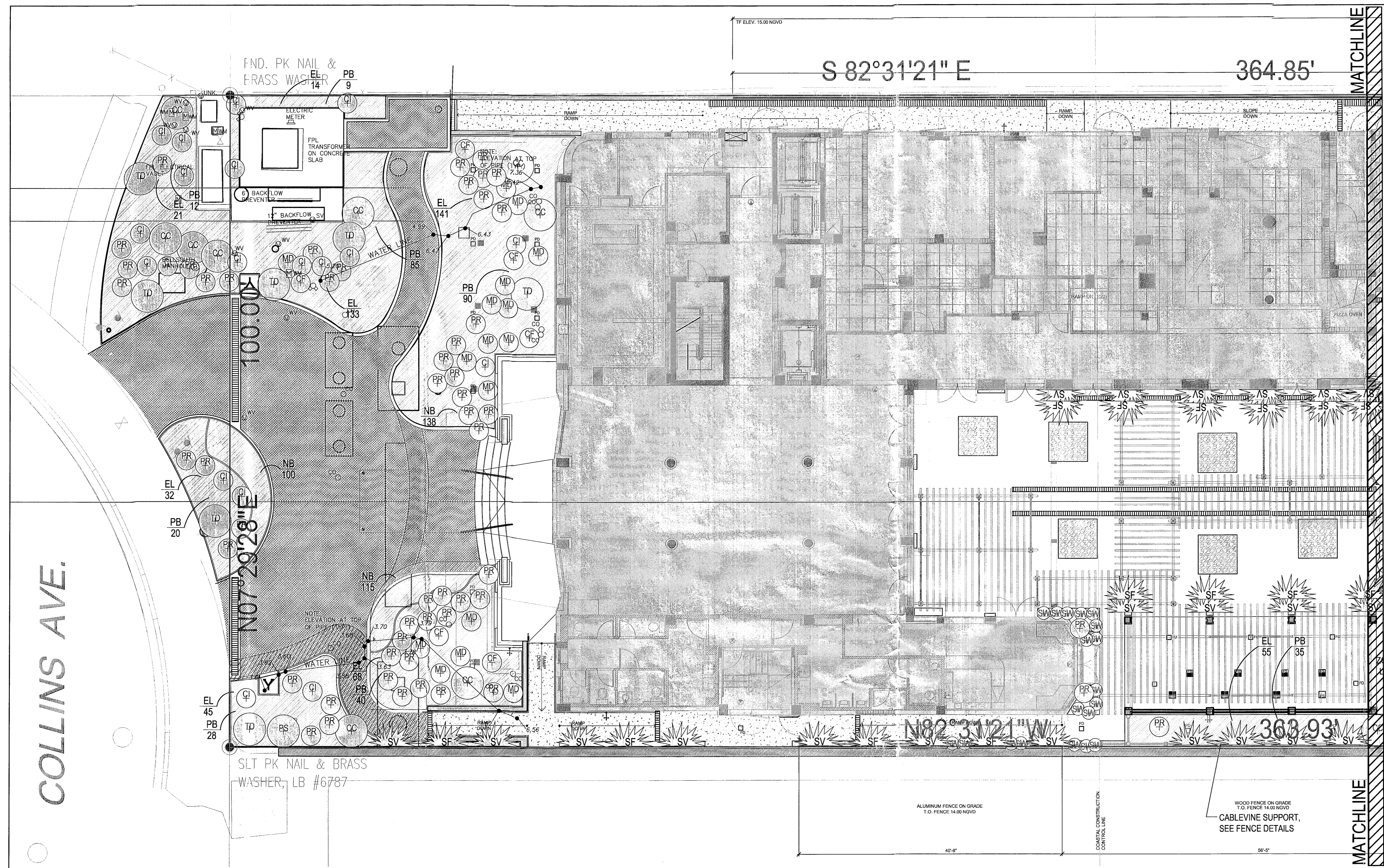


SOHO BEACH HOUSE
4385 COLLINS AVENUE, MIAMI BEACH, FL, 33140
JOB NO. 06023
RENOVATION AND ADDITION

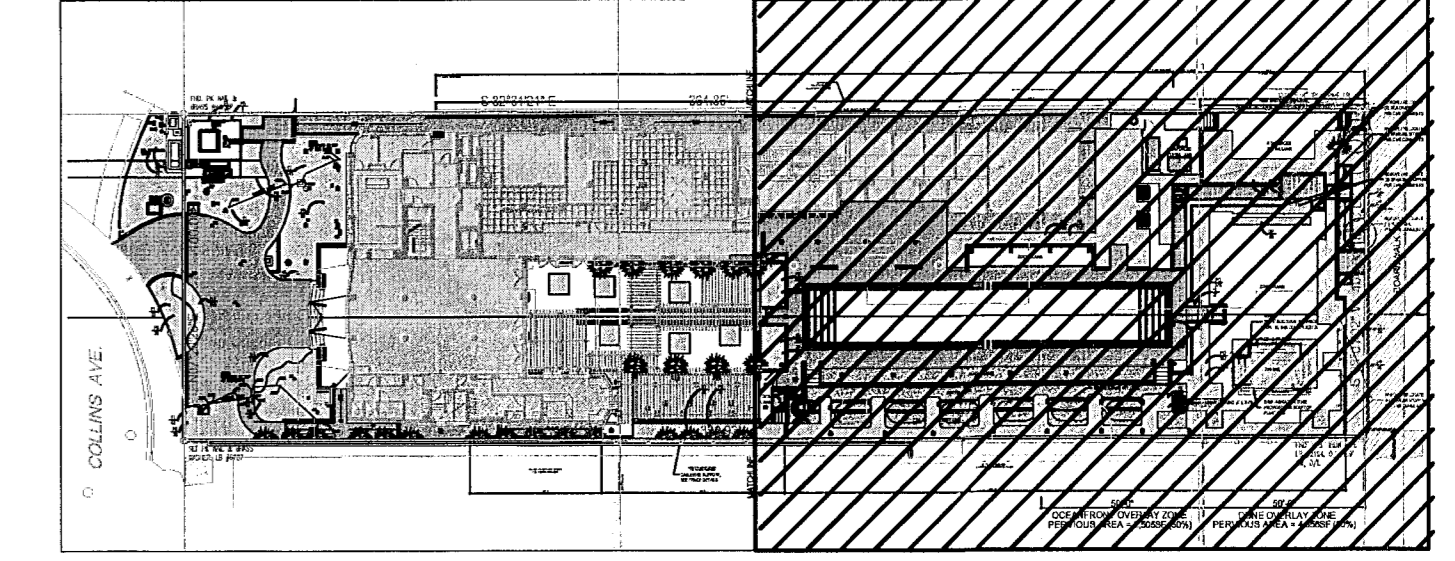
L-3.01
10.19.10

NOTE: PLANTING SCHEDULE,
SEE SHEET L-3.01

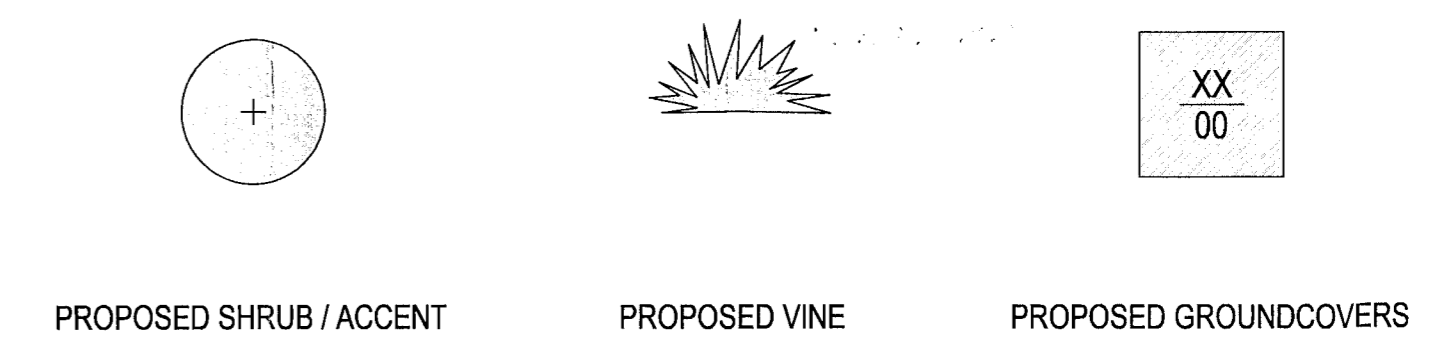
Handwritten notes:
LEFT COLUMN
4382 Collins Ave
R1100000



PLAN KEY



PLANT SYMBOL KEY



NOTE: FINAL LOCATION OF PLANTS TO BE DETERMINED IN THE FIELD BY LANDSCAPE ARCHITECT. CONTRACTOR TO STAKE TREE LOCATIONS AND CONFIRM SOIL DEPTH/UTILITY CONFLICTS. PRIOR TO DIGGING, CONTRACTOR TO SCHEDULE REVIEW OF FIELD CONDITIONS WITH LANDSCAPE ARCHITECT TO ADJUST TREE LOCATION TO RESOLVE ANY CONFLICTS

PARTIAL UNDERSTORY PLANTING PLAN

SCALE: 1/8"=1'-0"

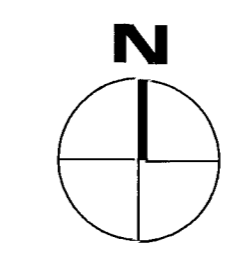
ALLANT. SHULMAN ARCHITECT, P.A.
(AR 0012763)
100 NE 38TH STREET, SPACE #2 MIAMI, FL 33137
TEL: 305.438.0609 FAX: 305.438.0170

JUNGLES
LANDSCAPE ARCHITECT
RAYMOND JUNGLES INCORPORATED
Landscape Architect ASLA
242 SW 5th Street, Miami, FL 33130
PH (305)858.6777 FAX (305)856.0742
www.raymondjungles.com

REVISIONS

REVISIONS

Signature
10.19.10



SOHO BEACH HOUSE
4385 COLLINS AVENUE, MIAMI BEACH, FL, 33140
JOB NO. 06023
RENOVATION AND ADDITION

L-3.03
10.19.10

PERMIT #

B9902208

ADDRESS

4385 Collins Av

89902208



BEARING CAPACITY CERTIFICATION

March 11, 1999

Shakman Construction Company
141 NW 20th Street B-5
Boca Raton, Florida 33431

RE: Windham Hotel
4385 Collins Avenue
Miami Beach, Florida

This is to certify that these building sites, consisting of both naturally occurring soils and added fill, have been prepared in accordance with the soil tests requirements, and are sufficiently free of deleterious materials to provide the design pressure of 2500 p.s.f. required to support the foundations of this pool structure and wooden deck.

Sincerely,
GFA INTERNATIONAL

Fred G. Kub
Fredency G. Kub, P.E. 3/11/99
Registered Geologist # 1344
State of Florida

John F. Mesnyers
John F. Mesnyers, P.E. 3/11/99
Registered Engineer # 47585
State of Florida

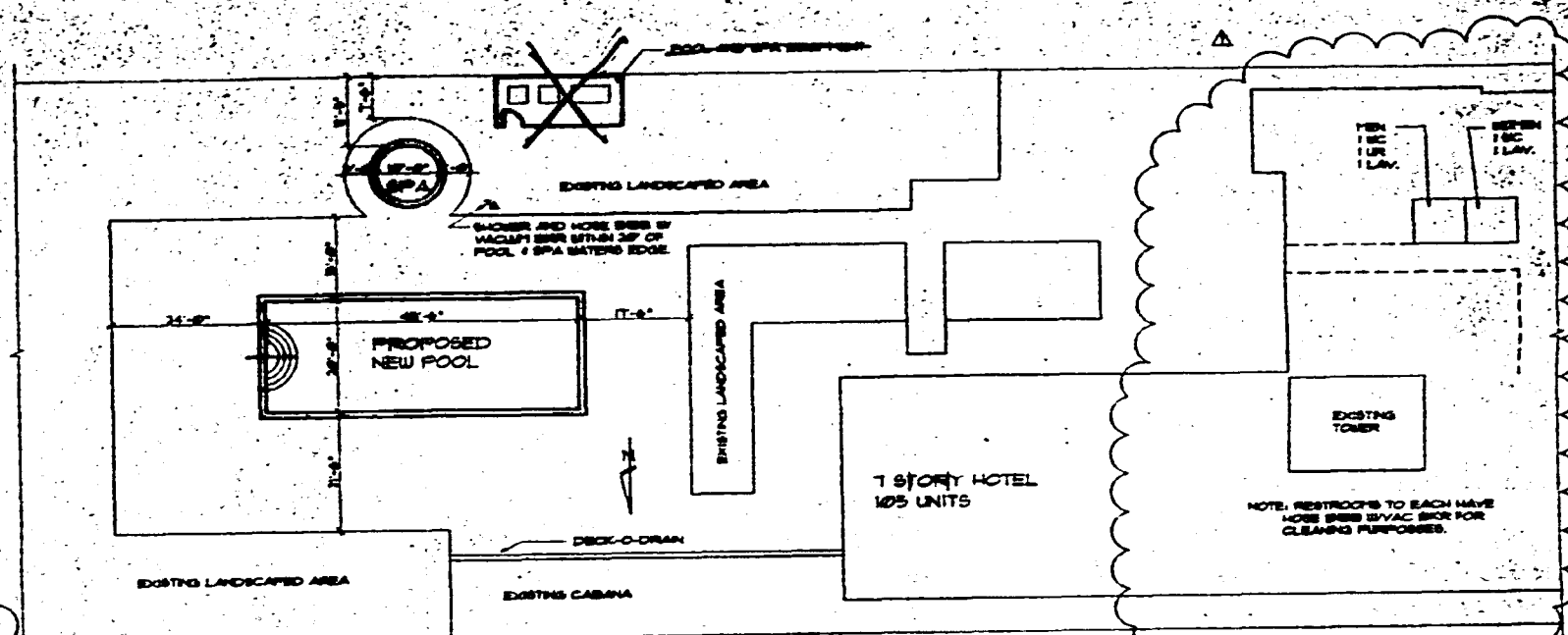
FGK, JFD/aw

Environmental	Corporate Office	Coast Guard Office	Central Florida Office
Geotechnical	411 S.W. 20th Street	1701 S.E. Independence Circle	4220 E. Orange Avenue, Trl
Materials Testing	Boca Raton, Florida 33431	Fort Myers, Florida 33902	Suite 400B
Threshold Inspections	(561) 347-0070	(813) 476-2111	Orlando, Florida 32809
	(561) 347-0009 Fax	(813) 476-2438 Fax	(407) 853-4422
	Web Site: www.gfa-int.com		(407) 853-8021 Fax

1502220007

GENERAL NOTES

1. CONCRETE POOL SHALL BE 2800 PSI 28 DAY COMPRESSIVE STRENGTH.
2. ALUMINUM POOL SHALL BE 2800 PSI 28 DAY COMPRESSIVE STRENGTH.
3. ALL POOL AND DECK SURFACES SHALL BE FINISHED WITH A NON-SKID FINISH AS SPECIFIED IN THE CODES OF THE CITY OF MIAMI BEACH, FLORIDA.
4. REINFORCING STEEL SHALL CONFORM WITH ASTM A618 GRADE 60.
5. THE POOL AND DECK SHALL BE FINISHED WITH A NON-SKID FINISH AS SPECIFIED IN THE CODES OF THE CITY OF MIAMI BEACH, FLORIDA.
6. POOL AND DECK SHALL BE FINISHED WITH A NON-SKID FINISH AS SPECIFIED IN THE CODES OF THE CITY OF MIAMI BEACH, FLORIDA.
7. ALL POOL DECK SHALL HAVE VACUUM FINISH.
8. NO OVERHEAD WIRES WITHIN 5' OF POOL.
9. ELECTRICAL EQUIPMENT, WIRES AND INSTALLATION SHALL CONFORM WITH THE NATIONAL ELECTRICAL CODE, THE NATIONAL FIRE PROTECTION ASSOCIATION AND SHALL CONFORM WITH APPLICABLE LOCAL CODES.
10. THE HEIGHT OF HANDRAILS ON THE LADDER ABOVE DECK SHALL BE PER MANUFACTURER'S RECOMMENDATION.
11. ALL P.V.C. PIPES SHALL BE SCHEDULE 40 / SCHEDULE 80 UNLESS OTHERWISE SPECIFIED BY LOCAL CODE AND BE FINISHED WITH THE MANUFACTURER'S RECOMMENDED FINISH.
12. ALL P.V.C. CONNECTIONS SHALL BE PROPERLY MADE AND SHALL BE TESTED TO THE MANUFACTURER'S RECOMMENDATION.
13. ALL P.V.C. CONNECTIONS SHALL BE PROPERLY MADE AND SHALL BE TESTED TO THE MANUFACTURER'S RECOMMENDATION.
14. ALL P.V.C. CONNECTIONS SHALL BE PROPERLY MADE AND SHALL BE TESTED TO THE MANUFACTURER'S RECOMMENDATION.
15. ALL P.V.C. CONNECTIONS SHALL BE PROPERLY MADE AND SHALL BE TESTED TO THE MANUFACTURER'S RECOMMENDATION.
16. ALL P.V.C. CONNECTIONS SHALL BE PROPERLY MADE AND SHALL BE TESTED TO THE MANUFACTURER'S RECOMMENDATION.
17. ALL P.V.C. CONNECTIONS SHALL BE PROPERLY MADE AND SHALL BE TESTED TO THE MANUFACTURER'S RECOMMENDATION.
18. ALL P.V.C. CONNECTIONS SHALL BE PROPERLY MADE AND SHALL BE TESTED TO THE MANUFACTURER'S RECOMMENDATION.
19. ALL P.V.C. CONNECTIONS SHALL BE PROPERLY MADE AND SHALL BE TESTED TO THE MANUFACTURER'S RECOMMENDATION.
20. ALL P.V.C. CONNECTIONS SHALL BE PROPERLY MADE AND SHALL BE TESTED TO THE MANUFACTURER'S RECOMMENDATION.
21. ALL P.V.C. CONNECTIONS SHALL BE PROPERLY MADE AND SHALL BE TESTED TO THE MANUFACTURER'S RECOMMENDATION.
22. ALL P.V.C. CONNECTIONS SHALL BE PROPERLY MADE AND SHALL BE TESTED TO THE MANUFACTURER'S RECOMMENDATION.
23. ALL P.V.C. CONNECTIONS SHALL BE PROPERLY MADE AND SHALL BE TESTED TO THE MANUFACTURER'S RECOMMENDATION.
24. ALL P.V.C. CONNECTIONS SHALL BE PROPERLY MADE AND SHALL BE TESTED TO THE MANUFACTURER'S RECOMMENDATION.
25. ALL P.V.C. CONNECTIONS SHALL BE PROPERLY MADE AND SHALL BE TESTED TO THE MANUFACTURER'S RECOMMENDATION.
26. ALL P.V.C. CONNECTIONS SHALL BE PROPERLY MADE AND SHALL BE TESTED TO THE MANUFACTURER'S RECOMMENDATION.
27. ALL P.V.C. CONNECTIONS SHALL BE PROPERLY MADE AND SHALL BE TESTED TO THE MANUFACTURER'S RECOMMENDATION.
28. ALL P.V.C. CONNECTIONS SHALL BE PROPERLY MADE AND SHALL BE TESTED TO THE MANUFACTURER'S RECOMMENDATION.
29. ALL P.V.C. CONNECTIONS SHALL BE PROPERLY MADE AND SHALL BE TESTED TO THE MANUFACTURER'S RECOMMENDATION.
30. ALL P.V.C. CONNECTIONS SHALL BE PROPERLY MADE AND SHALL BE TESTED TO THE MANUFACTURER'S RECOMMENDATION.
31. ALL P.V.C. CONNECTIONS SHALL BE PROPERLY MADE AND SHALL BE TESTED TO THE MANUFACTURER'S RECOMMENDATION.
32. ALL P.V.C. CONNECTIONS SHALL BE PROPERLY MADE AND SHALL BE TESTED TO THE MANUFACTURER'S RECOMMENDATION.
33. ALL P.V.C. CONNECTIONS SHALL BE PROPERLY MADE AND SHALL BE TESTED TO THE MANUFACTURER'S RECOMMENDATION.
34. ALL P.V.C. CONNECTIONS SHALL BE PROPERLY MADE AND SHALL BE TESTED TO THE MANUFACTURER'S RECOMMENDATION.
35. ALL P.V.C. CONNECTIONS SHALL BE PROPERLY MADE AND SHALL BE TESTED TO THE MANUFACTURER'S RECOMMENDATION.
36. ALL P.V.C. CONNECTIONS SHALL BE PROPERLY MADE AND SHALL BE TESTED TO THE MANUFACTURER'S RECOMMENDATION.
37. ALL P.V.C. CONNECTIONS SHALL BE PROPERLY MADE AND SHALL BE TESTED TO THE MANUFACTURER'S RECOMMENDATION.
38. ALL P.V.C. CONNECTIONS SHALL BE PROPERLY MADE AND SHALL BE TESTED TO THE MANUFACTURER'S RECOMMENDATION.
39. ALL P.V.C. CONNECTIONS SHALL BE PROPERLY MADE AND SHALL BE TESTED TO THE MANUFACTURER'S RECOMMENDATION.
40. ALL P.V.C. CONNECTIONS SHALL BE PROPERLY MADE AND SHALL BE TESTED TO THE MANUFACTURER'S RECOMMENDATION.
41. ALL P.V.C. CONNECTIONS SHALL BE PROPERLY MADE AND SHALL BE TESTED TO THE MANUFACTURER'S RECOMMENDATION.
42. ALL P.V.C. CONNECTIONS SHALL BE PROPERLY MADE AND SHALL BE TESTED TO THE MANUFACTURER'S RECOMMENDATION.
43. ALL P.V.C. CONNECTIONS SHALL BE PROPERLY MADE AND SHALL BE TESTED TO THE MANUFACTURER'S RECOMMENDATION.
44. ALL P.V.C. CONNECTIONS SHALL BE PROPERLY MADE AND SHALL BE TESTED TO THE MANUFACTURER'S RECOMMENDATION.
45. ALL P.V.C. CONNECTIONS SHALL BE PROPERLY MADE AND SHALL BE TESTED TO THE MANUFACTURER'S RECOMMENDATION.
46. ALL P.V.C. CONNECTIONS SHALL BE PROPERLY MADE AND SHALL BE TESTED TO THE MANUFACTURER'S RECOMMENDATION.
47. ALL P.V.C. CONNECTIONS SHALL BE PROPERLY MADE AND SHALL BE TESTED TO THE MANUFACTURER'S RECOMMENDATION.
48. ALL P.V.C. CONNECTIONS SHALL BE PROPERLY MADE AND SHALL BE TESTED TO THE MANUFACTURER'S RECOMMENDATION.
49. ALL P.V.C. CONNECTIONS SHALL BE PROPERLY MADE AND SHALL BE TESTED TO THE MANUFACTURER'S RECOMMENDATION.
50. ALL P.V.C. CONNECTIONS SHALL BE PROPERLY MADE AND SHALL BE TESTED TO THE MANUFACTURER'S RECOMMENDATION.



SITE PLAN
SCALE: 1/8" = 1'-0"

RECEIVED
MAR 22 1999
CITY OF MIAMI BEACH

POOL DEPTH CALCULATION
 FLOOR DECK ELEVATION: 180 HIGHER
 TOP OF POOL ELEVATION: 180 HIGHER
 BOTTOM OF POOL ELEVATION: 120 HIGHER
 DEPTH: 6 FT
 MINIMUM VALVE DEPTH: 2 FT
 MINIMUM TIE ROD DEPTH: 4 FT
 USE 2" TIE RODS

DESIGN REVIEW BOARD
 BOARD APPROVAL: [Signature]
 DIRECTOR APPROVAL: [Signature]
 APPROVED WITH CONDITIONS: [Signature]
 NOT APPROVED: [Signature]
 DATE: 3/15/99
 BY: [Signature]

NOTE: A POOL CLOSED SIGN MUST BE CONSPICUOUSLY PLACED NEAR THE ENTRANCE OF POOL. THE SIGN SHALL BE PLACED EACH DAY NO LATER THAN ONE HALF HOUR BEFORE SUNSET AND SHALL NOT BE REMOVED EARLIER THAN ONE HALF HOUR AFTER SUNRISE. THE LETTERING MUST BE A MINIMUM OF 1" HIGH WITH A CONTRASTING BACKGROUND COLOR OF THE SIGN AT THIS POOL CLOSURE.

OFFICE COPY
 CITY OF MIAMI BEACH
 APPROVED FOR PERMIT BY THE FOLLOWING:

BUILDING: [Signature]
 ZONING: [Signature]
 PLUMBING: [Signature]
 ELECTRICAL: [Signature]
 MECHANICAL: [Signature]
 FIRE PREVENTION: [Signature]
 ENGINEERING: [Signature]
 PUBLIC WORKS: [Signature]
 STRUCTURAL: [Signature]
 ACCESSIBILITY: [Signature]
 ENVIRONMENT: [Signature]

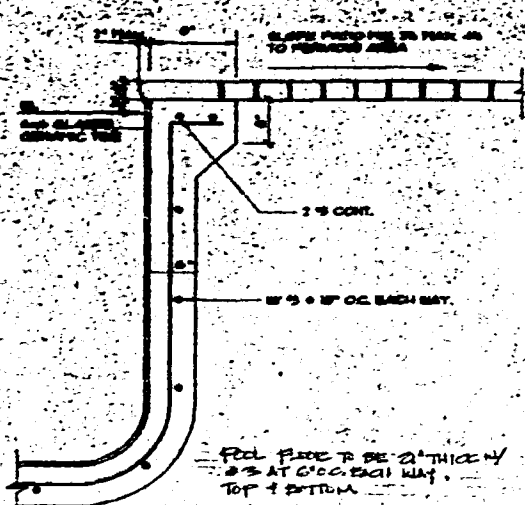
APPROVED
 STATE OF FLORIDA
 DEPARTMENT OF HEALTH
 DADE COUNTY HEALTH DEPARTMENT
 ENVIRONMENTAL HEALTH
 Serial No. 1899SP3575
 MAR 24 1999

WYNDHAM GARDEN HOTEL
 4500 COLLINS AVE.
 MIAMI BEACH, FLORIDA

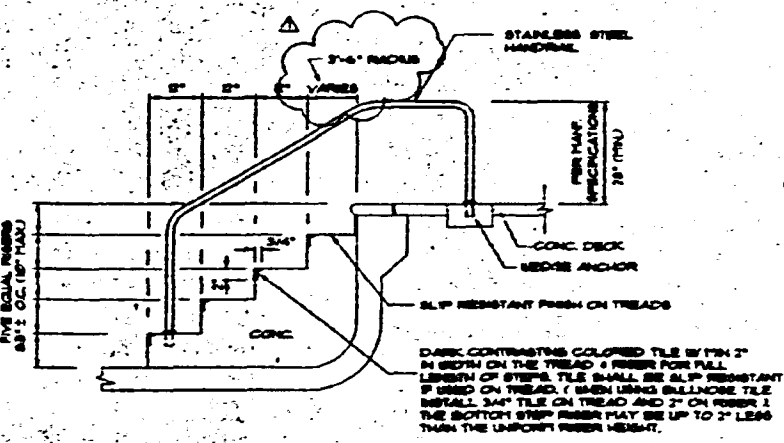
DATE: [Blank]
 DRAWN BY: [Blank]
 CHECKED BY: [Blank]
 IN CHARGE: [Blank]
 SCALE: [Blank]

00000005

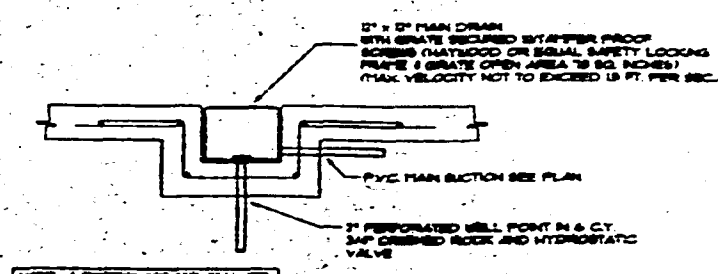
WASTE MUST GO TO WASTE



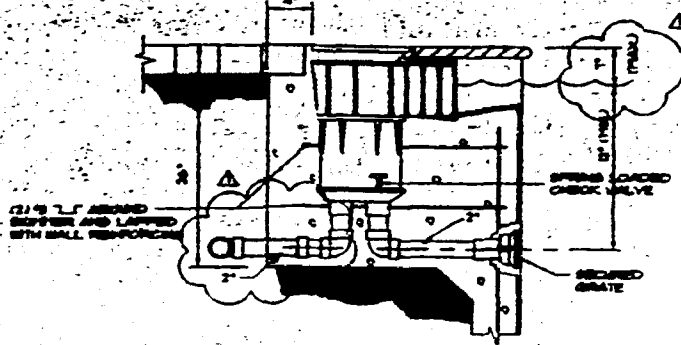
REINFORCING DETAIL
N.T.S.



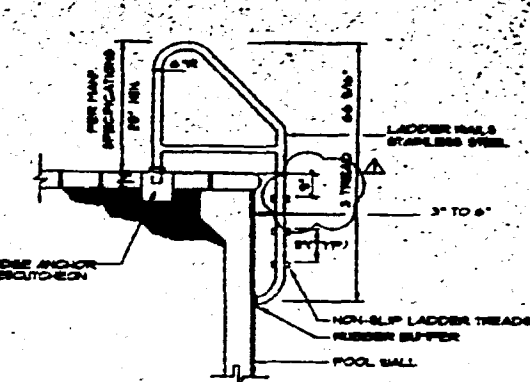
STEP DETAIL
N.T.S.



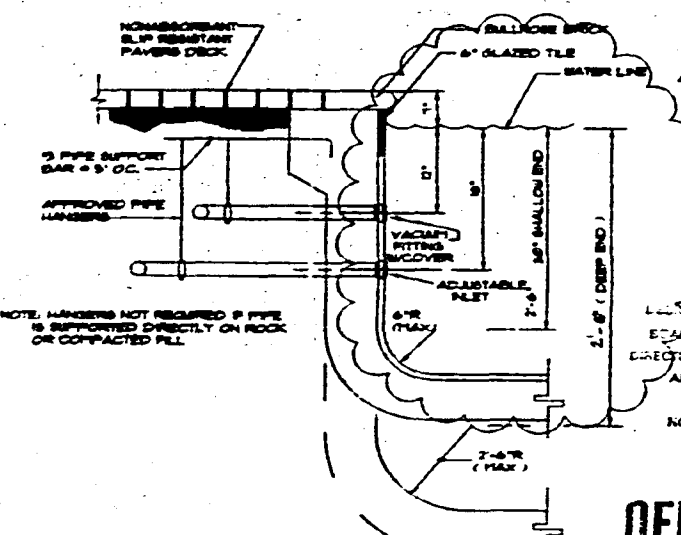
MAIN DRAIN DETAIL
N.T.S.



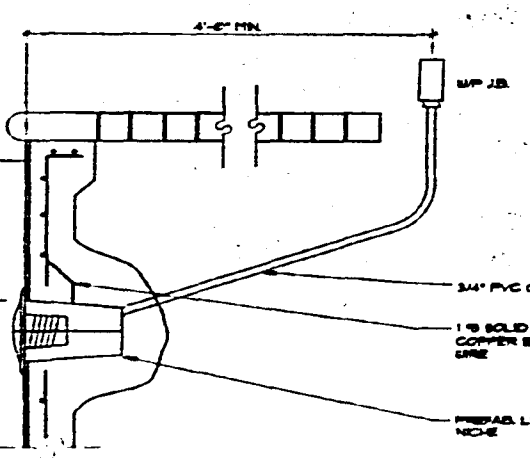
SKIMMER DETAIL (N.S.F. APPROVED)
N.T.S.



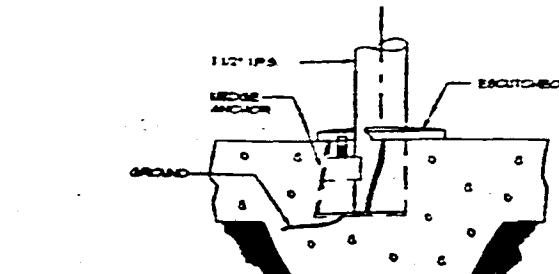
LADDER DETAIL
N.T.S.



WALL SECTION
N.T.S.



OFFICE COPY LIGHT NICHE DETAIL
CITY OF MIAMI BEACH
N.T.S.



WEDGE ANCHOR DETAIL
N.T.S.

APPROVED FOR PERMIT BY THE FOLLOWING:

- BUILDING: [Signature]
- ZONING: [Signature]
- ELECTRICAL: [Signature]
- MUNICIPAL: [Signature]
- FIRE PREVENTION: [Signature]
- ENGINEERING: [Signature]
- PUBLIC WORKS: [Signature]
- STRUCTURAL: [Signature]
- ACCESSIBILITY: [Signature]
- ELEVATOR: [Signature]

APPROVED
STATE OF FLORIDA
DEPARTMENT OF HEALTH
DADE COUNTY HEALTH DEPARTMENT
EPIDEMIOLOGICAL HEALTH
Serial No. 1899SP3575
MAR 24 1999

WYNDHAM GARDEN HOTEL
438 COLLINS AVE.
MIAMI BEACH, FLORIDA

DATE: [Blank]
DRAWN BY: [Blank]
CHECKED BY: [Blank]
DATE: [Blank]

SHEET 3

00000000

POOL EQUIPMENT SCHEDULE

NO.	DESCRIPTION	QUANTITY	MANUFACTURER	REMARKS
1	POOL DECK, 12' x 12' x 1 1/2"	1	CONCRETE	12' x 12' x 1 1/2"
2	1 1/2" HD POLYETHYLENE GLASS FIBER REINFORCED	1	CONCRETE	12' x 12' x 1 1/2"
3	1 1/2" HD POLYETHYLENE GLASS FIBER REINFORCED	1	CONCRETE	12' x 12' x 1 1/2"
4	1 1/2" HD POLYETHYLENE GLASS FIBER REINFORCED	1	CONCRETE	12' x 12' x 1 1/2"
5	1 1/2" HD POLYETHYLENE GLASS FIBER REINFORCED	1	CONCRETE	12' x 12' x 1 1/2"
6	1 1/2" HD POLYETHYLENE GLASS FIBER REINFORCED	1	CONCRETE	12' x 12' x 1 1/2"
7	1 1/2" HD POLYETHYLENE GLASS FIBER REINFORCED	1	CONCRETE	12' x 12' x 1 1/2"
8	1 1/2" HD POLYETHYLENE GLASS FIBER REINFORCED	1	CONCRETE	12' x 12' x 1 1/2"
9	1 1/2" HD POLYETHYLENE GLASS FIBER REINFORCED	1	CONCRETE	12' x 12' x 1 1/2"
10	1 1/2" HD POLYETHYLENE GLASS FIBER REINFORCED	1	CONCRETE	12' x 12' x 1 1/2"
11	1 1/2" HD POLYETHYLENE GLASS FIBER REINFORCED	1	CONCRETE	12' x 12' x 1 1/2"
12	1 1/2" HD POLYETHYLENE GLASS FIBER REINFORCED	1	CONCRETE	12' x 12' x 1 1/2"
13	1 1/2" HD POLYETHYLENE GLASS FIBER REINFORCED	1	CONCRETE	12' x 12' x 1 1/2"
14	1 1/2" HD POLYETHYLENE GLASS FIBER REINFORCED	1	CONCRETE	12' x 12' x 1 1/2"
15	1 1/2" HD POLYETHYLENE GLASS FIBER REINFORCED	1	CONCRETE	12' x 12' x 1 1/2"
16	1 1/2" HD POLYETHYLENE GLASS FIBER REINFORCED	1	CONCRETE	12' x 12' x 1 1/2"
17	1 1/2" HD POLYETHYLENE GLASS FIBER REINFORCED	1	CONCRETE	12' x 12' x 1 1/2"
18	1 1/2" HD POLYETHYLENE GLASS FIBER REINFORCED	1	CONCRETE	12' x 12' x 1 1/2"
19	1 1/2" HD POLYETHYLENE GLASS FIBER REINFORCED	1	CONCRETE	12' x 12' x 1 1/2"
20	1 1/2" HD POLYETHYLENE GLASS FIBER REINFORCED	1	CONCRETE	12' x 12' x 1 1/2"
21	1 1/2" HD POLYETHYLENE GLASS FIBER REINFORCED	1	CONCRETE	12' x 12' x 1 1/2"
22	1 1/2" HD POLYETHYLENE GLASS FIBER REINFORCED	1	CONCRETE	12' x 12' x 1 1/2"
23	1 1/2" HD POLYETHYLENE GLASS FIBER REINFORCED	1	CONCRETE	12' x 12' x 1 1/2"
24	1 1/2" HD POLYETHYLENE GLASS FIBER REINFORCED	1	CONCRETE	12' x 12' x 1 1/2"
25	1 1/2" HD POLYETHYLENE GLASS FIBER REINFORCED	1	CONCRETE	12' x 12' x 1 1/2"
26	1 1/2" HD POLYETHYLENE GLASS FIBER REINFORCED	1	CONCRETE	12' x 12' x 1 1/2"
27	1 1/2" HD POLYETHYLENE GLASS FIBER REINFORCED	1	CONCRETE	12' x 12' x 1 1/2"
28	1 1/2" HD POLYETHYLENE GLASS FIBER REINFORCED	1	CONCRETE	12' x 12' x 1 1/2"
29	1 1/2" HD POLYETHYLENE GLASS FIBER REINFORCED	1	CONCRETE	12' x 12' x 1 1/2"
30	1 1/2" HD POLYETHYLENE GLASS FIBER REINFORCED	1	CONCRETE	12' x 12' x 1 1/2"
31	1 1/2" HD POLYETHYLENE GLASS FIBER REINFORCED	1	CONCRETE	12' x 12' x 1 1/2"
32	1 1/2" HD POLYETHYLENE GLASS FIBER REINFORCED	1	CONCRETE	12' x 12' x 1 1/2"
33	1 1/2" HD POLYETHYLENE GLASS FIBER REINFORCED	1	CONCRETE	12' x 12' x 1 1/2"
34	1 1/2" HD POLYETHYLENE GLASS FIBER REINFORCED	1	CONCRETE	12' x 12' x 1 1/2"
35	1 1/2" HD POLYETHYLENE GLASS FIBER REINFORCED	1	CONCRETE	12' x 12' x 1 1/2"
36	1 1/2" HD POLYETHYLENE GLASS FIBER REINFORCED	1	CONCRETE	12' x 12' x 1 1/2"
37	1 1/2" HD POLYETHYLENE GLASS FIBER REINFORCED	1	CONCRETE	12' x 12' x 1 1/2"
38	1 1/2" HD POLYETHYLENE GLASS FIBER REINFORCED	1	CONCRETE	12' x 12' x 1 1/2"
39	1 1/2" HD POLYETHYLENE GLASS FIBER REINFORCED	1	CONCRETE	12' x 12' x 1 1/2"
40	1 1/2" HD POLYETHYLENE GLASS FIBER REINFORCED	1	CONCRETE	12' x 12' x 1 1/2"
41	1 1/2" HD POLYETHYLENE GLASS FIBER REINFORCED	1	CONCRETE	12' x 12' x 1 1/2"
42	1 1/2" HD POLYETHYLENE GLASS FIBER REINFORCED	1	CONCRETE	12' x 12' x 1 1/2"
43	1 1/2" HD POLYETHYLENE GLASS FIBER REINFORCED	1	CONCRETE	12' x 12' x 1 1/2"
44	1 1/2" HD POLYETHYLENE GLASS FIBER REINFORCED	1	CONCRETE	12' x 12' x 1 1/2"
45	1 1/2" HD POLYETHYLENE GLASS FIBER REINFORCED	1	CONCRETE	12' x 12' x 1 1/2"
46	1 1/2" HD POLYETHYLENE GLASS FIBER REINFORCED	1	CONCRETE	12' x 12' x 1 1/2"
47	1 1/2" HD POLYETHYLENE GLASS FIBER REINFORCED	1	CONCRETE	12' x 12' x 1 1/2"
48	1 1/2" HD POLYETHYLENE GLASS FIBER REINFORCED	1	CONCRETE	12' x 12' x 1 1/2"
49	1 1/2" HD POLYETHYLENE GLASS FIBER REINFORCED	1	CONCRETE	12' x 12' x 1 1/2"
50	1 1/2" HD POLYETHYLENE GLASS FIBER REINFORCED	1	CONCRETE	12' x 12' x 1 1/2"

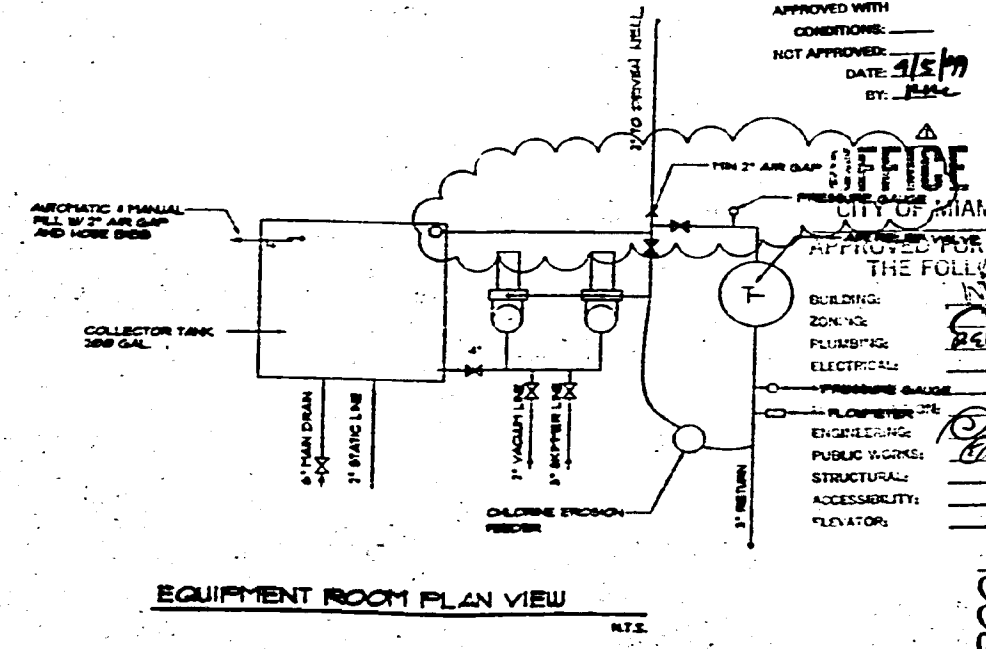
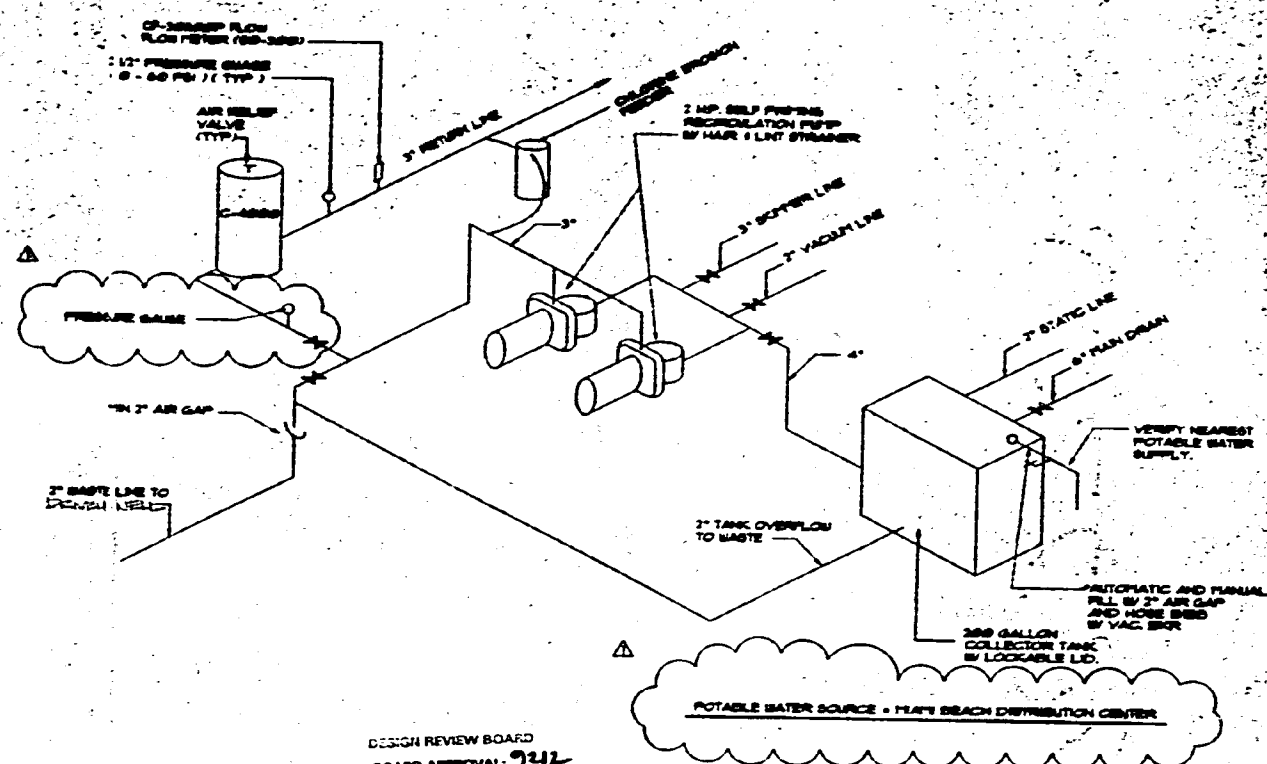
POOL HYDRAULICS

FROM	TO	PIPE SIZE	VELOCITY
MAIN DRAIN TO COLLECTOR TANK	8"	6"	1.1
COLLECTOR TANK TO PUMP	8"	3"	3.5
PUMP SECTION	8"	2"	2.7
RETURN	8"	2"	0.8

POOL DATA

UNIT SERVED	20 x 40 ft
SIZE	20 x 40 ft
DEPTH	2' TO 5'
VOLUME	200 GALLON
FRESHEN	20 L.P.
REPAIRS	AS REQ.
FLOR LOAD	20 S.F.T.
SWAMP LOAD	20

- ### EQUIPMENT NOTES
- FLOOR SHALL BE NON ABSORBENT, SLIP RESISTANT & SLOPED FOR DRAINAGE
 - ALL EQUIPMENT SHALL BE ACCEPTABLE AND DESIGNED FOR OUT DOOR USE.
 - ALL PIPING SHALL BE PAINTED TO PROTECT IT FROM UV RAYS.
 - EQUIPMENT AREA SHALL BE ENCLOSED BY 4' CHAIN LINK FENCE WITH SELF CLOSING SELF LATCHING GATE WITH FINGER LOCKING DEVICE.
 - MATERIAL USED FOR FENCE SHALL BE NON TOXIC AND ACCEPTABLE FOR CHILDREN'S USE.
 - A HOSE END SHOWER BREAKER SHALL BE PROVIDED IN EQUIPMENT ROOM.

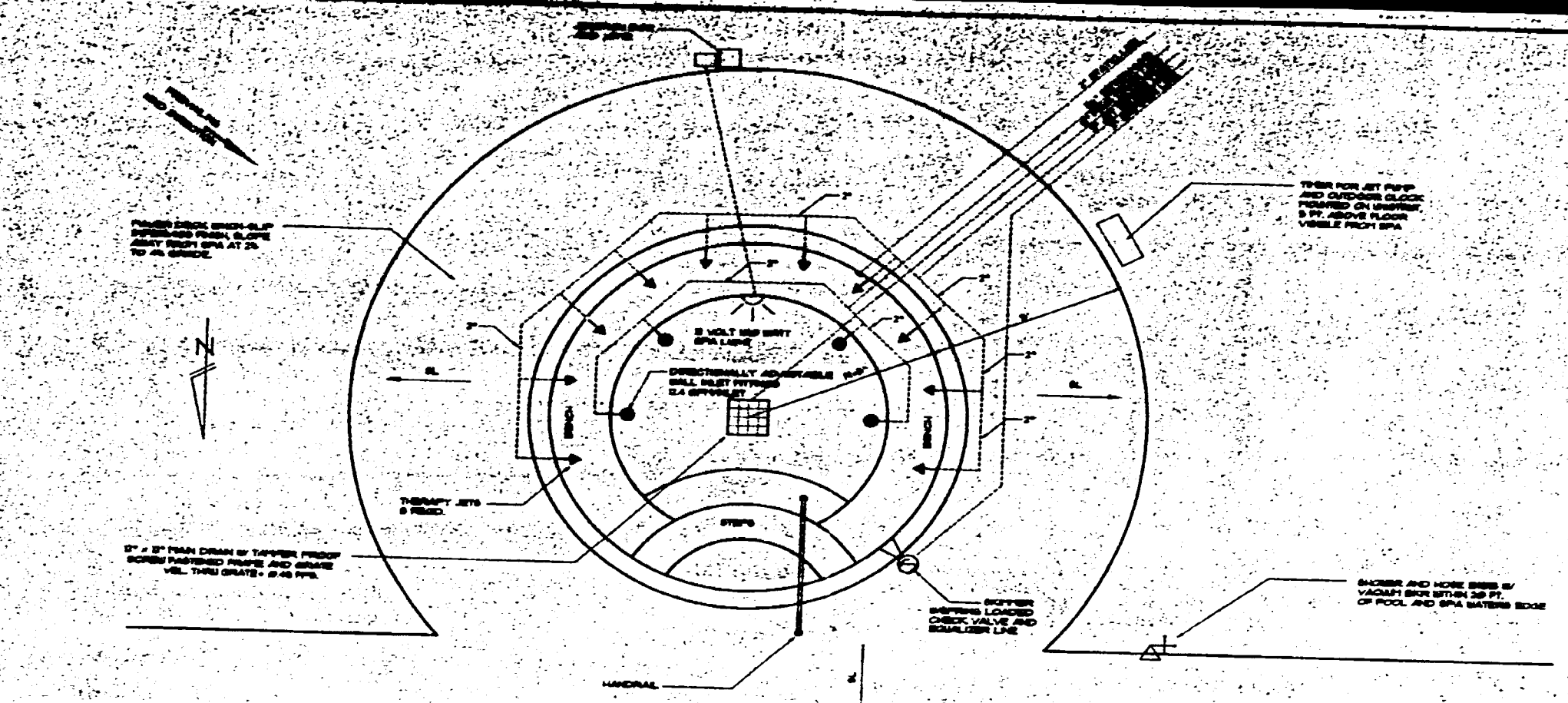


OFFICE COPY
 CITY OF MIAMI BEACH
 APPROVED FOR PERMIT BY:
 THE FOLLOWING:
 BUILDING: [Signature]
 ZONING: [Signature]
 PLUMBING: [Signature]
 ELECTRICAL: [Signature]
 FIRE/SAFETY: [Signature]
 ENGINEERING: [Signature]
 PUBLIC WORKS: [Signature]
 STRUCTURAL: [Signature]
 ACCESSIBILITY: [Signature]
 ELEVATORS: [Signature]

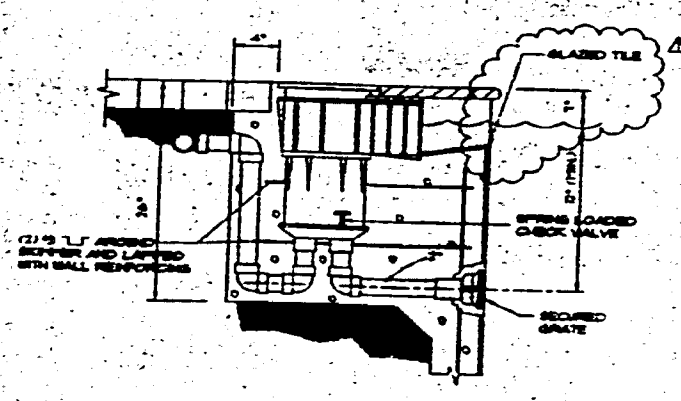
APPROVED
 STATE OF FLORIDA
 DEPARTMENT OF REVENUE
 DADS COUNTY REVENUE DEPARTMENT
 ENVIRONMENTAL HEALTH
 Permit No. 1999SP3575
 MAR 24 2000

WYNDHAM GARDEN HOTEL
 400 COLLINS AVE.
 MIAMI BEACH, FLORIDA
 DATE: 3-16-00
 AGEND: [Signature]
 SHEET: 4

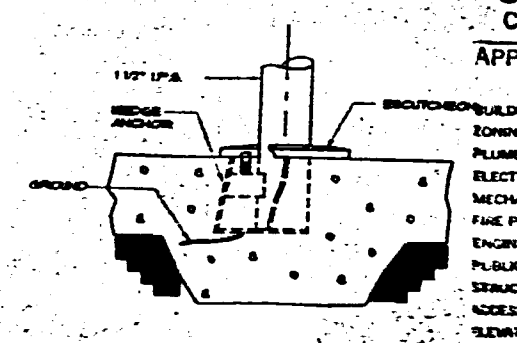
0000268



SPA PIPING PLAN



SKIMMER DETAIL (NSF APPROVED)
N.T.S.



WEDGE ANCHOR DETAIL
N.T.S.

OFFICE COPY
CITY OF MIAMI BEACH
APPROVED FOR PERMIT BY
THE FOLLOWING:

- ZONING: *OK*
- PLUMBING: *2/4/12*
- ELECTRICAL: *OK*
- MECHANICAL: *OK*
- FAKE PREVENTION: *OK*
- ENGINEERING: *OK*
- PUBLIC WORKS: *OK*
- STRUCTURAL: *OK*
- LIABILITY: *OK*
- TELEPHONE: *OK*

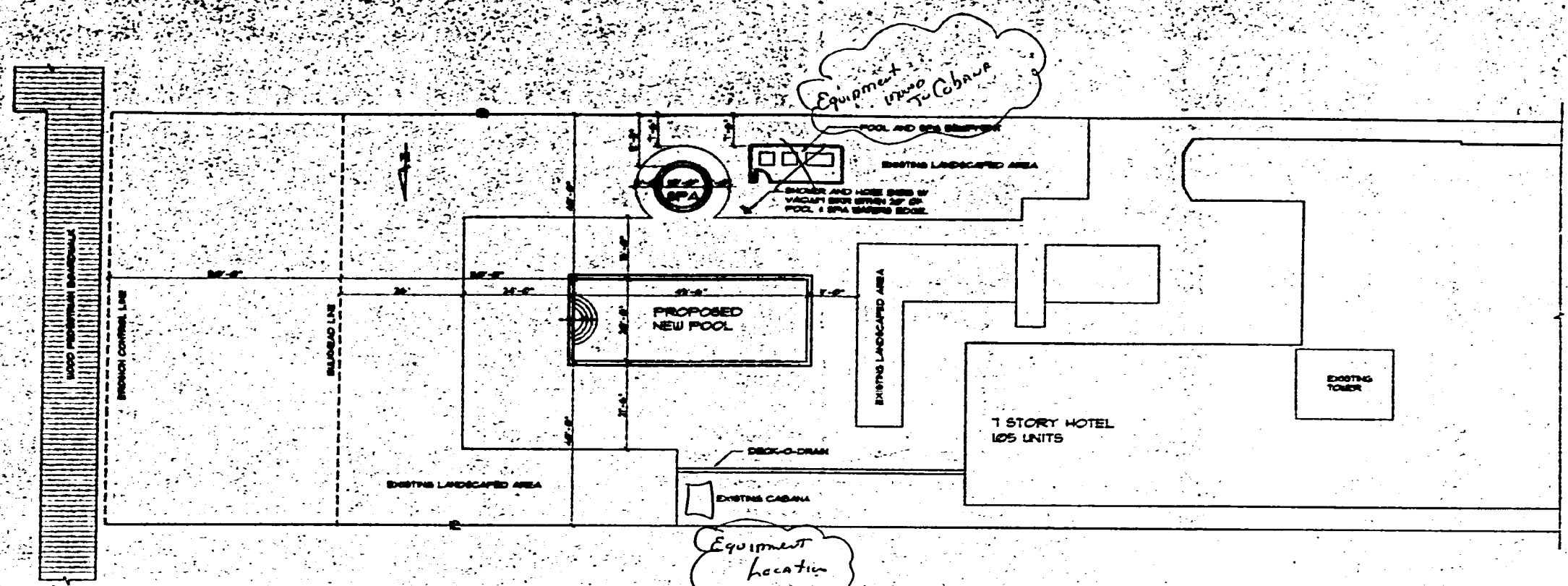
APPROVED
STATE OF FLORIDA
DEPARTMENT OF HEALTH
DADE COUNTY HEALTH DEPARTMENT
SERIAL NO. 1899SP3575-S
MAY 24 1999

WYNDHAM GARDEN HOTEL
400 COLLIER AVE.
MIAMI BEACH, FLORIDA

DATE: 2-16-12
DRAWN BY: [Signature]
CHECKED BY: [Signature]
DESIGNED BY: [Signature]
PROJECT: [Signature]

SHEET 3 OF 4

000000



SITE PLAN
SCALE: 1/8" = 1'-0"

OFFICE COPY
CITY OF MIAMI BEACH

APPROVED FOR PERMIT BY THE FOLLOWING:

- BUILDING: CP
- ZONING: 36-46-105
- PLUMBING: _____
- ELECTRICAL: _____
- MECHANICAL: _____
- FIRE PREVENTION: _____
- ENGINEERING: 100-10/10
- PUBLIC WORKS: _____
- STRUCTURAL: _____
- ACCESSIBILITY: _____
- ELEVATOR: _____

[Signature]

WYNDHAM GARDEN HOTEL

1000 COLLINS AVE.
MIAMI BEACH, FLORIDA

DATE: 1-26-78	DESIGNED BY: <u>GENERAL CONTRACTOR</u>	SHEET: <u>01P-1</u>
SCALE: AS SHOWN	PROJECT NO: <u>100-10/10</u>	

4-1-78