

1 GROUND LEVEL FLOOR PLAN
SCALE: 1" = 20'

NOTE

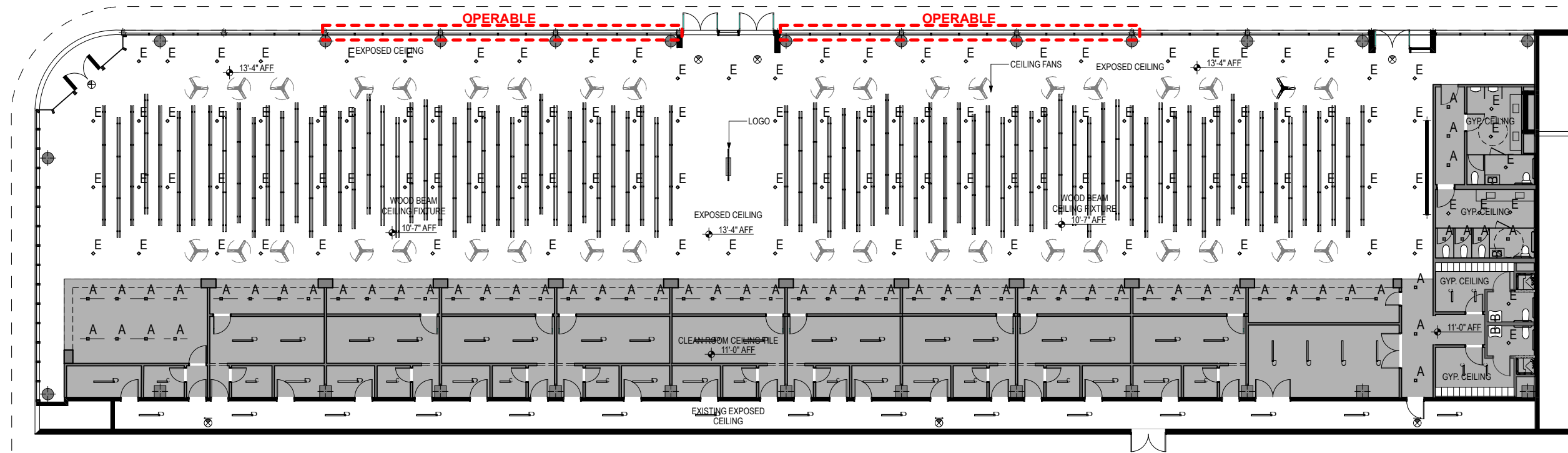
1. LANDSCAPE IS NOT APPLICABLE. ALL EXISTING STREET LANDSCAPE MATERIAL, LIGHTING, IRRIGATION, CURBS, AS WELL AS UNDERGROUND AND OVER HEAD UTILITIES WILL REMAIN AS IS.

2. HARDSCAPE IS NOT APPLICABLE. ALL EXISTING PAVING MATERIAL WILL REMAIN AS IS.

SEAT COUNT:	OCCUPANCY:
INTERIOR: 320	ASSEMBLY: 196
EXTERIOR: 144	KITCHEN: 57
	BAR: 37
	FOOD COUNTER 32
	TOTAL: 322

LIGHT FIXTURES

A	RECESSED LIGHT FIXTURE. FIXTURE BY OTHERS	E	PENDANT LIGHT FIXTURE. FIXTURE BY OTHERS
A1	RECESSED CAN LIGHT (DAMP LOCATION). FIXTURE BY OTHERS	[Symbol]	2' X 2' FLUORESCENT LIGHT FIXTURE. FIXTURE BY OTHERS
A2	SURFACE MOUNTED LIGHT FIXTURE (DAMP LOCATION). FIXTURE BY OTHERS	[Symbol]	JUNCTION BOX (ELECT.) RECESSED IN CONC. SLAB
B	WALL SCONCE INTERIOR. FIXTURE BY OTHERS	- CL -	CENTER LINE
C	FLUORESCENT LIGHT. FIXTURE BY OTHERS - SMALL	[Symbol]	2"x12" VERTICAL FAUX WOOD BEAM ON A 4"x6" HORIZONTAL FAUX WOOD
D	FLUORESCENT LIGHT. FIXTURE BY OTHERS - LARGE		
---	LED UNDER-CABINET LIGHTING - 2700 K		



1

GROUND LEVEL REFLECTED CEILING PLAN
SCALE: 1" = 20'



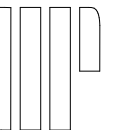
A-16

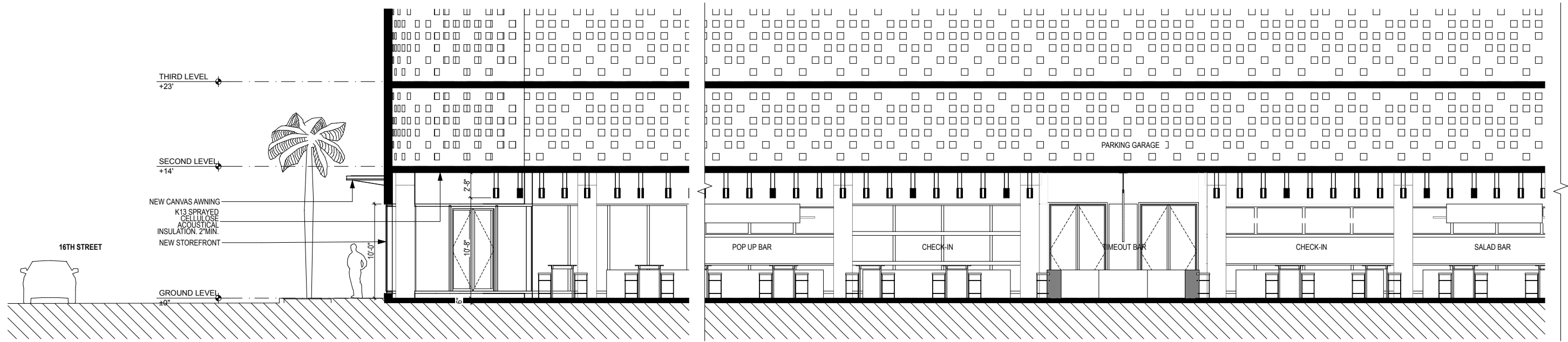
HPB SUBMITTAL

1601 DREXEL AVE :: MIAMI BEACH, FL 33139

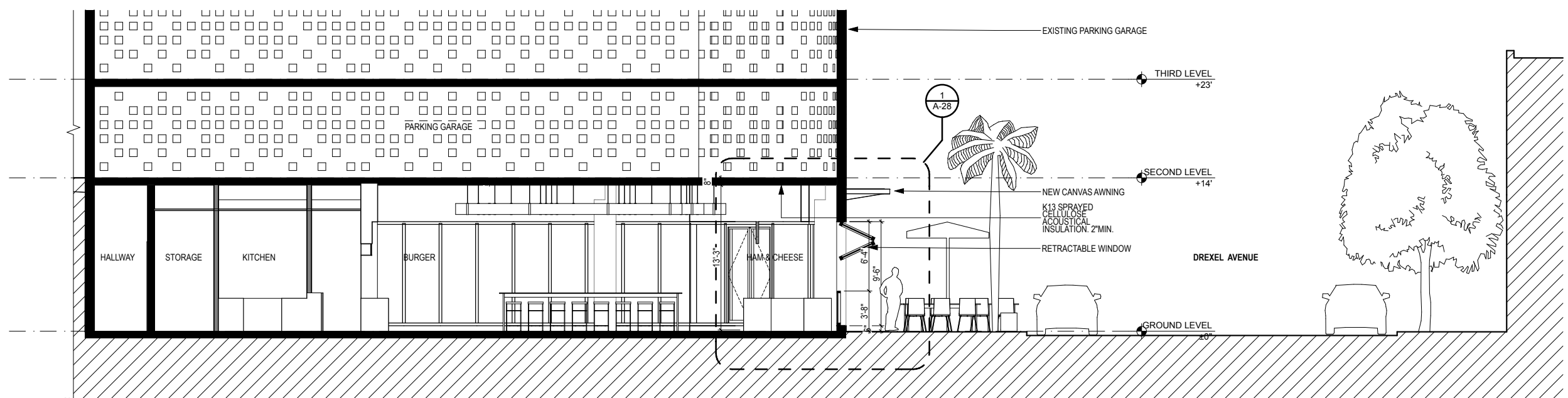
REFLECTED CEILING PLAN

12/15/2016 URBAN ROBOT © 2016

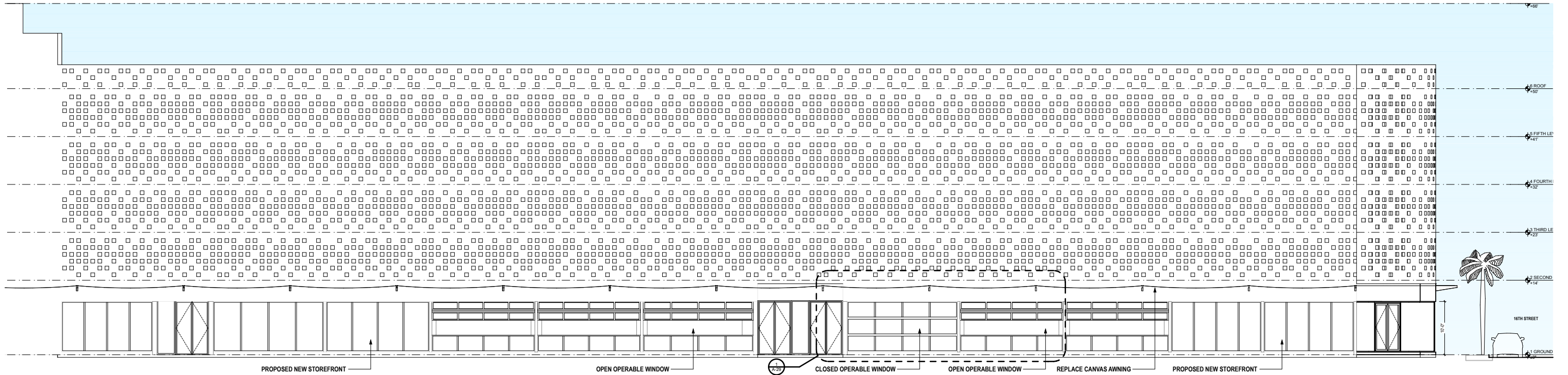




SECTION A ①
SCALE: 3/32" = 1'-0"



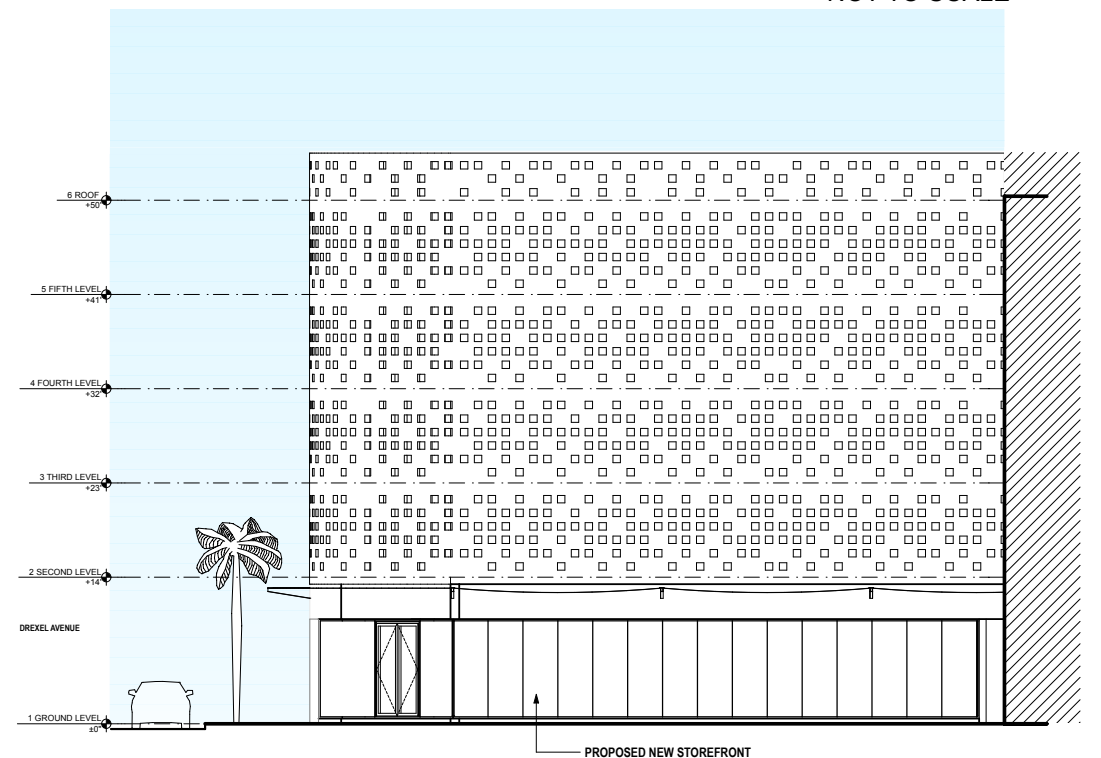
SECTION B ②
SCALE: 3/32" = 1'-0"



WEST ELEVATION

1

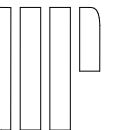
NOT TO SCALE



SOUTH ELEVATION

2

NOT TO SCALE





STOREFRONT SECTION

SCALE: 1' = 1'-0"

1

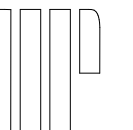
A-19

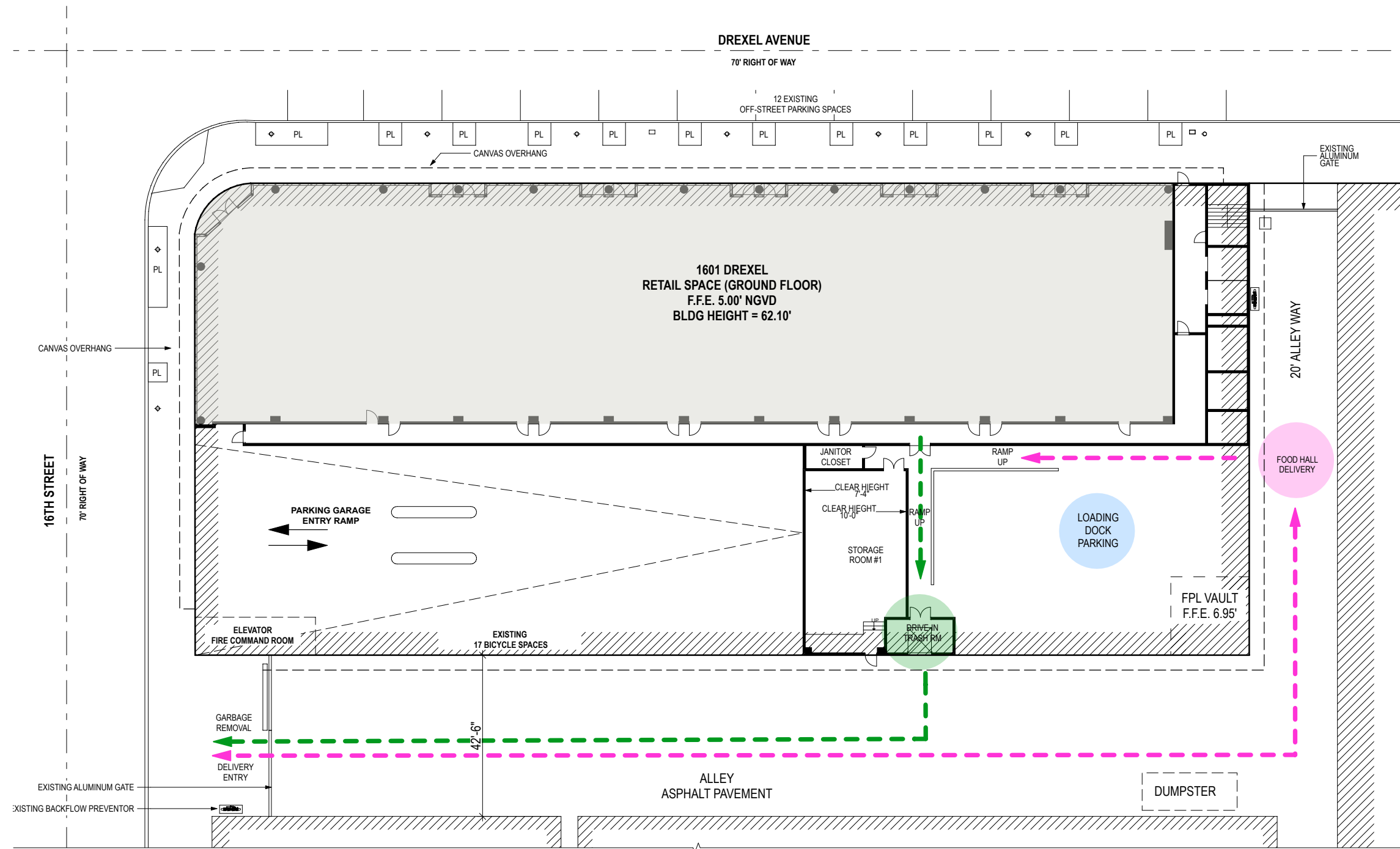
HPB SUBMITTAL

1601 DREXEL AVE :: MIAMI BEACH, FL 33139

STOREFRONT SECTION

12/15/2016 URBAN ROBOT © 2016



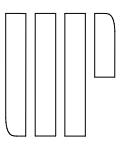


- FOOD/DRINK MERCHANDISE DELIVERY
- GARBAGE COLLECTION/REMOVAL
- LOADING AREA
- - - FOOD HALL DELIVERY
- - - GARBAGE TRANSPORT

DELIVERY AND WASTE MANAGEMENT PLAN

SCALE: 1" = 30'

1



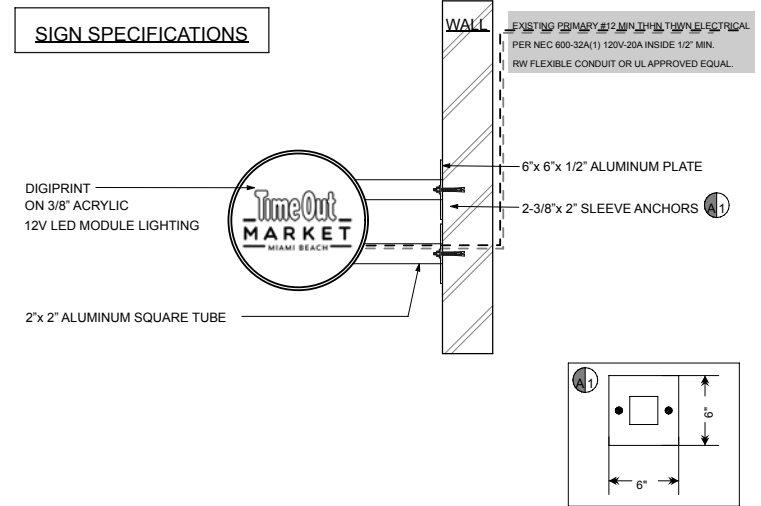


ILLUMINATED
BOX BLADE SIGN
W. T.O.M. CITY LOGO



WHITE NEON
BLADE SIGN
W. T.O.M. CITY LOGO

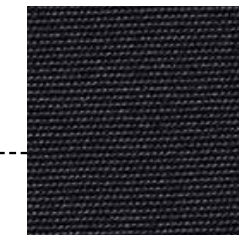
USE OF NEON IS SUBJECT
TO CITY APPROVALS



PROJECTED SIGN DETAIL

NOT TO SCALE

2



REPLACE AWNING FABRIC
SUNBRELLA BLACK CANVAS

EXTERIOR AWNINGS & BLADE SIGN

1

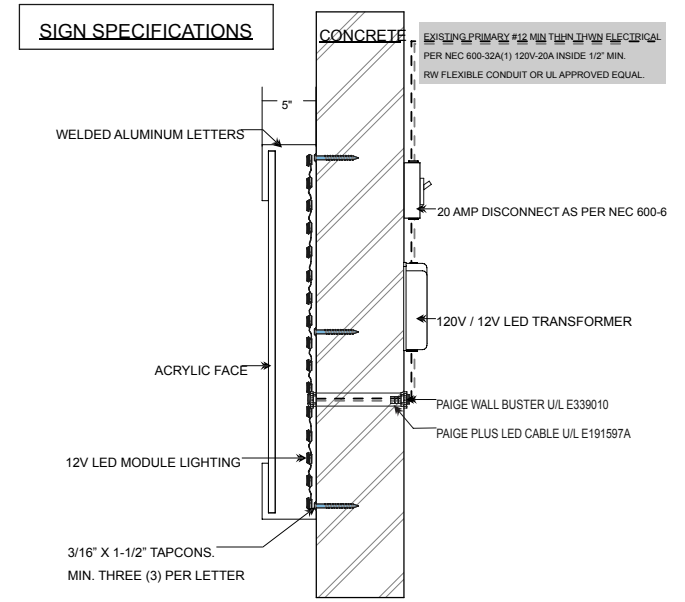
A-21

HPB SUBMITTAL

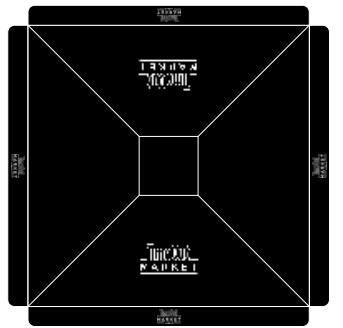
1601 DREXEL AVE :: MIAMI BEACH, FL 33139

12/15/2016 URBAN ROBOT © 2016





WALL SIGN DETAIL 2
NOT TO SCALE



BRANDED UMBRELLAS
W. T.O.M. CITY LOGO



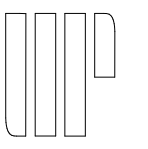
ILLUMINATED CHANNEL
LETTER LED SIGN
W. T.O.M. CITY LOGO

PRIMARY EXTERIOR SIGNAGE 1
NOT TO SCALE



KIOSK ELEVATION
SCALE: 1' = 1'-0"

1





WOOD CEILING FEATURE



REALLY BIG LOGO SIGN



BLACK STEEL BACK BAR DISPLAY



BLACK CONCRETE BAR TOP



GLAZED BLACK CERAMIC TILE



SATIN CONCRETE FLOORING

KIOSK ISOMETRIC

SCALE: 1' = 1'-0"

1

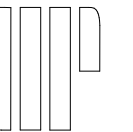
A-24

HPB SUBMITTAL

1601 DREXEL AVE :: MIAMI BEACH, FL 33139

12/15/2016 URBAN ROBOT © 2016

KIOSK ISOMETRIC RENDERING

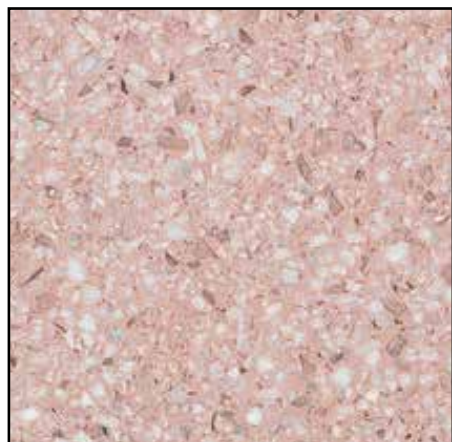




WOOD CEILING FEATURE



MATTE BLACK CERAMIC TILE



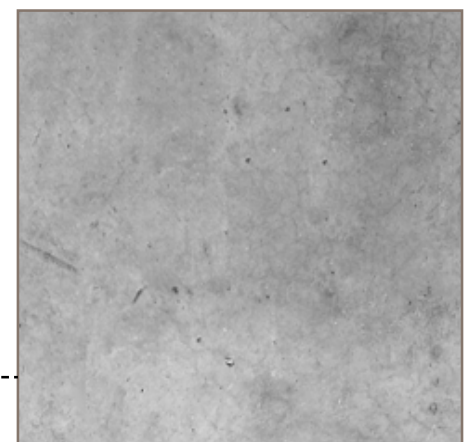
PINK TERRAZZO BAR



DECORATIVE WALL SCENCE



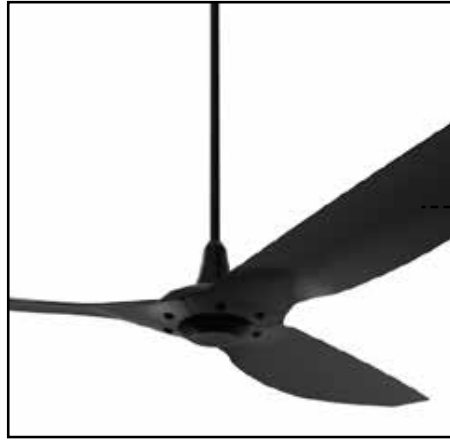
GLAZED WHITE CERAMIC TILE



SATIN CONCRETE FLOORING

KIOSK ISOMETRIC 1
SCALE: 1' = 1'-0"





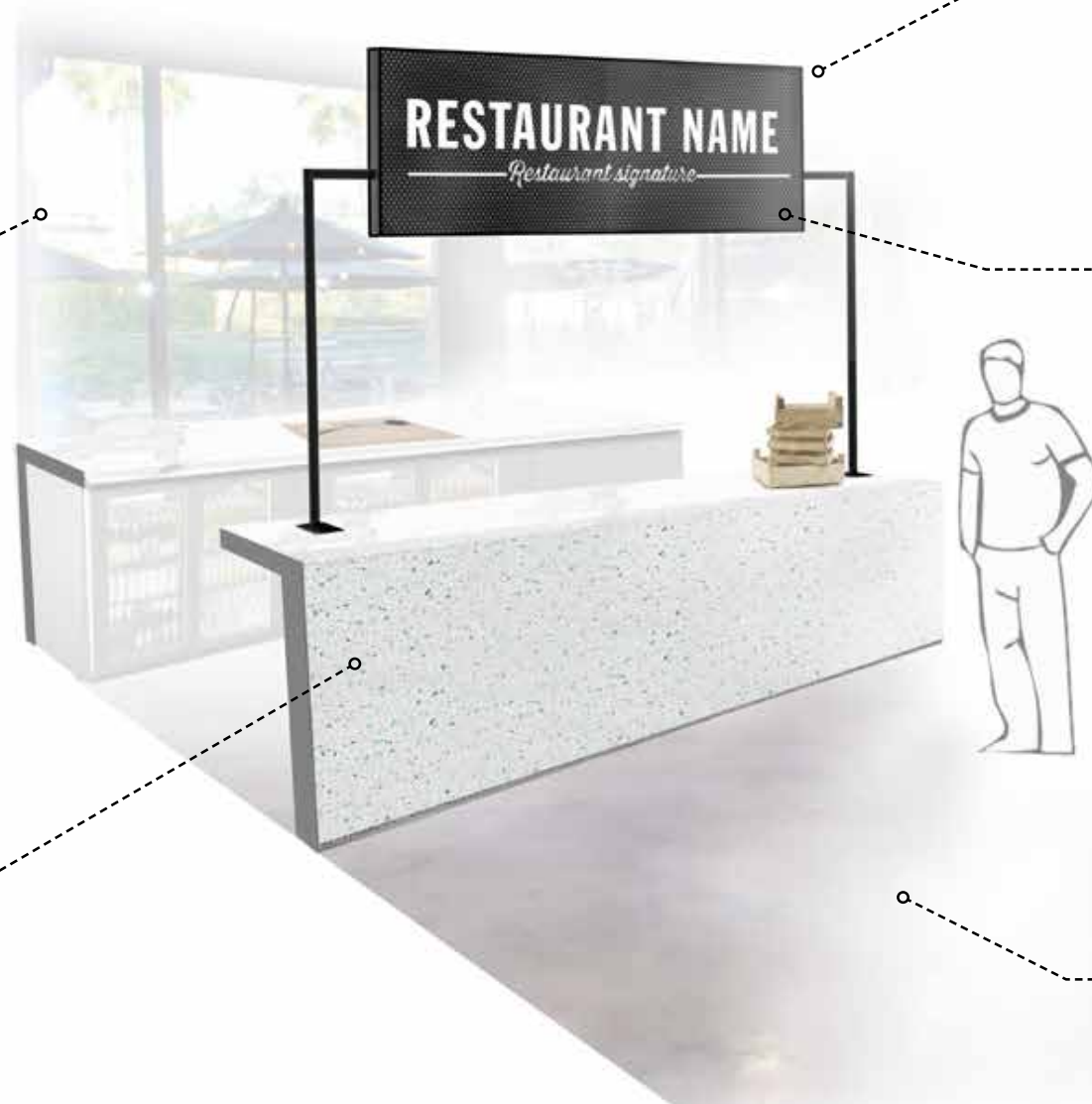
CEILING FAN



POP-UP BAR REFERENCE



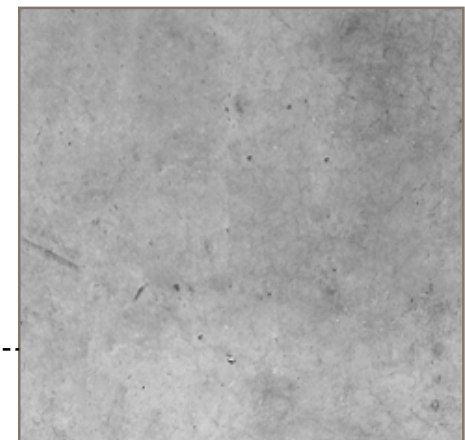
OPERABLE STOREFRONT WINDOW



MESH AT BLACK STEEL HEADER



WHITE-TEAL TERRAZZO SLAB



SATIN CONCRETE FLOORING

POP-UP BAR ISOMETRIC

SCALE: 1" = 1'-0"

1

A-26

HPB SUBMITTAL

1601 DREXEL AVE :: MIAMI BEACH, FL 33139

12/15/2016 URBAN ROBOT © 2016

POP-UP BAR ISOMETRIC RENDERING

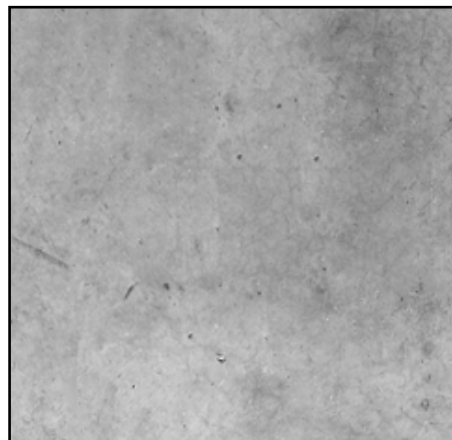




WOOD CEILING FEATURE



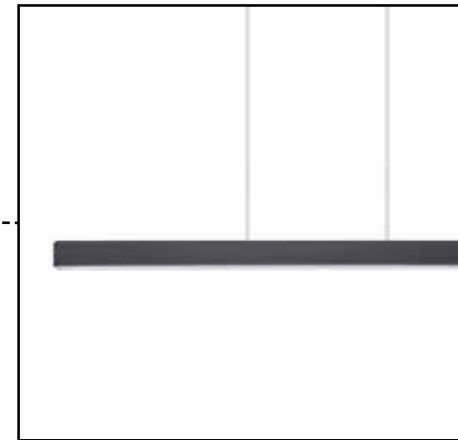
"LIMED" WHITE OAK WOOD FINISH



SATIN CONCRETE FLOORING



HANGING TROPICAL "POTHOS" VINE



SUSPENDED LINEAR LIGHT FIXTURE

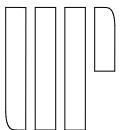


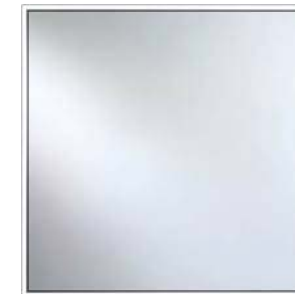
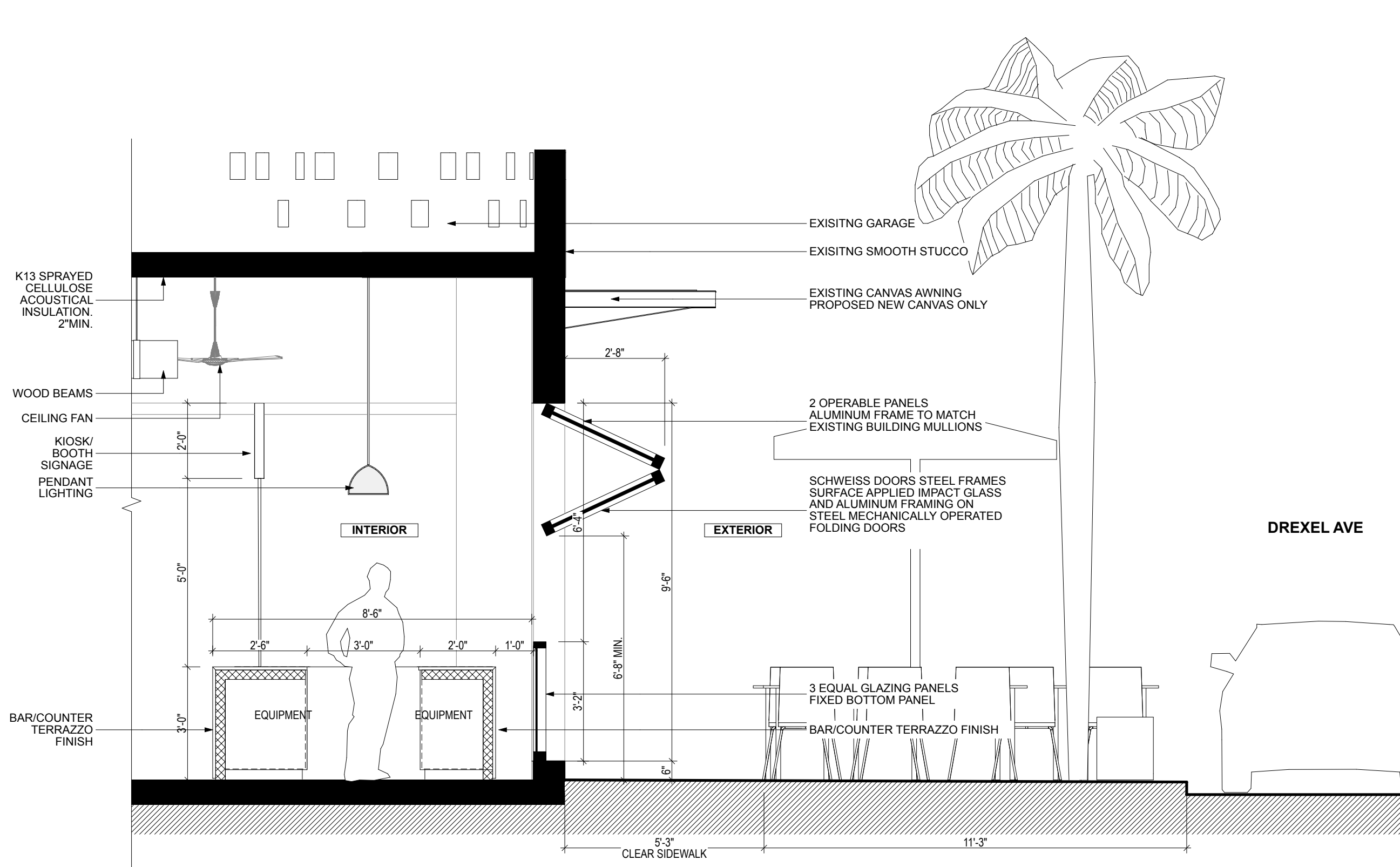
BLACKENED BRASS FINISH

COMMUNAL TABLE SEATING

SCALE: 1' = 1'-0"

1

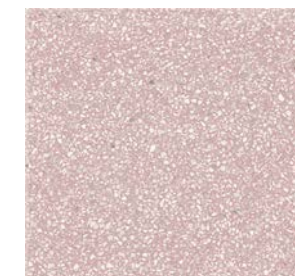




CLEAR GLASS



GRAY ALUMINUM



TERRAZZO FINISH OPT. 1



TERRAZZO FINISH OPT. 2

OPERABLE STOREFRONT ENLARGED SECTION

SCALE: 3/8" = 1'-0"

1

A-28

HPB SUBMITTAL

1601 DREXEL AVE :: MIAMI BEACH, FL 33139

OPERABLE STOREFRONT SECTION

12/15/2016 URBAN ROBOT © 2016





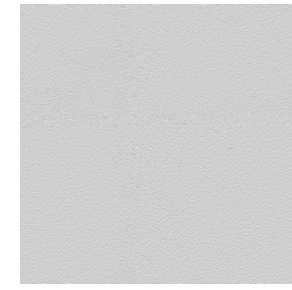
CLEAR GLASS
TO MATCH EXISTING



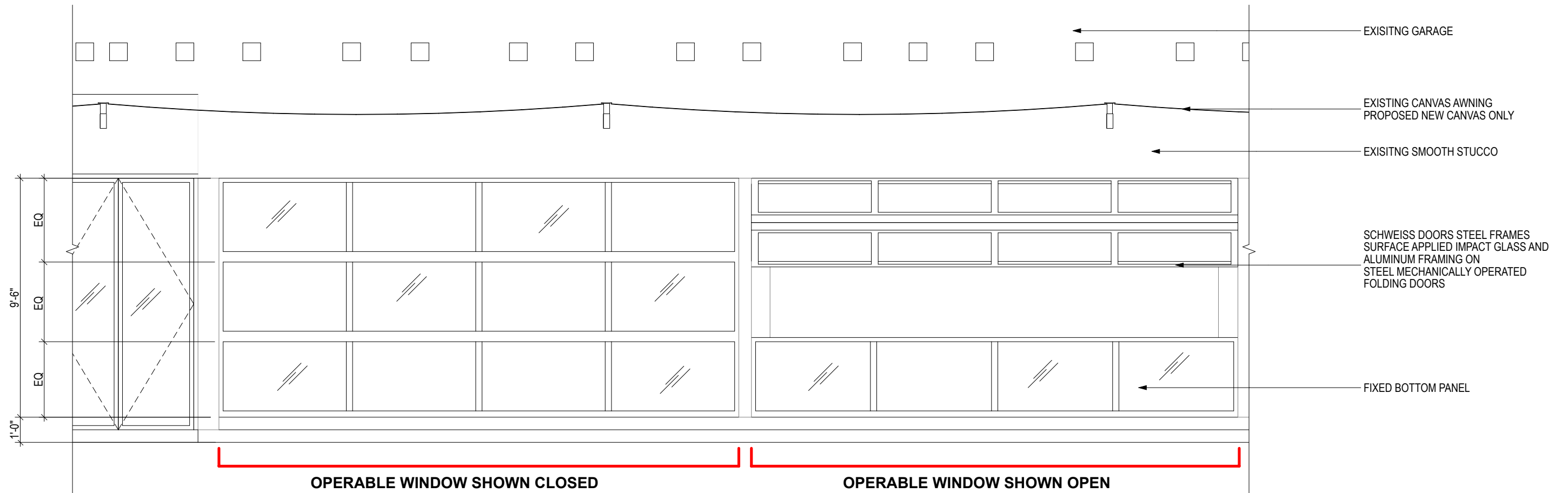
GRAY ALUMINUM
TO MATCH EXISTING



BLACK CANVAS AWNING
TO REPLACE EXISTING
CHARCOAL AWNING



EXISTING SMOOTH STUCCO
TO REMAIN



STOREFRONT ENLARGED ELEVATION

SCALE: 1/4" = 1'-0"

1

A-29

HPB SUBMITTAL

1601 DREXEL AVE :: MIAMI BEACH, FL 33139

OPERABLE STOREFRONT ELEVATION

12/15/2016 URBAN ROBOT © 2016



PRELIMINARY FOR REFERENCE ONLY

HYDRAULIC BI-FOLD SYSTEM

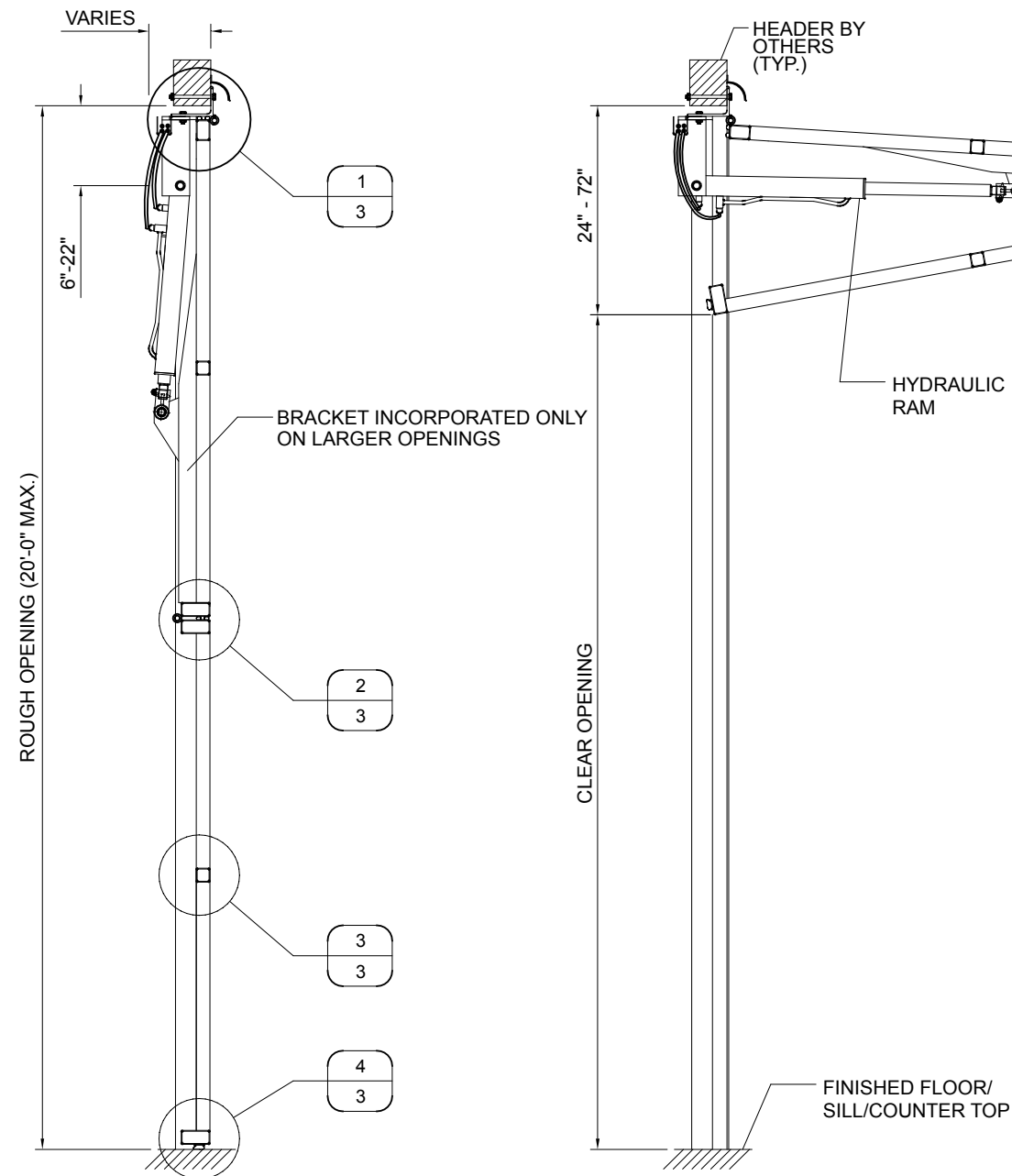
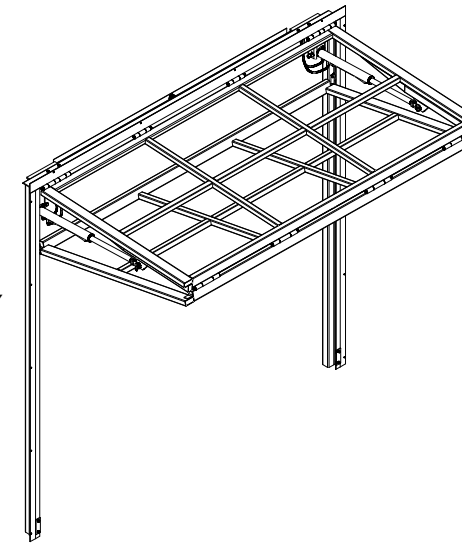
GENERAL NOTES:

SCHWEISS DOORS STEEL FRAMES
SURFACE APPLIED IMPACT GLASS AND ALUMINUM FRAMING
ON STEEL MECHANICALLY OPERATED FOLDING DOORS

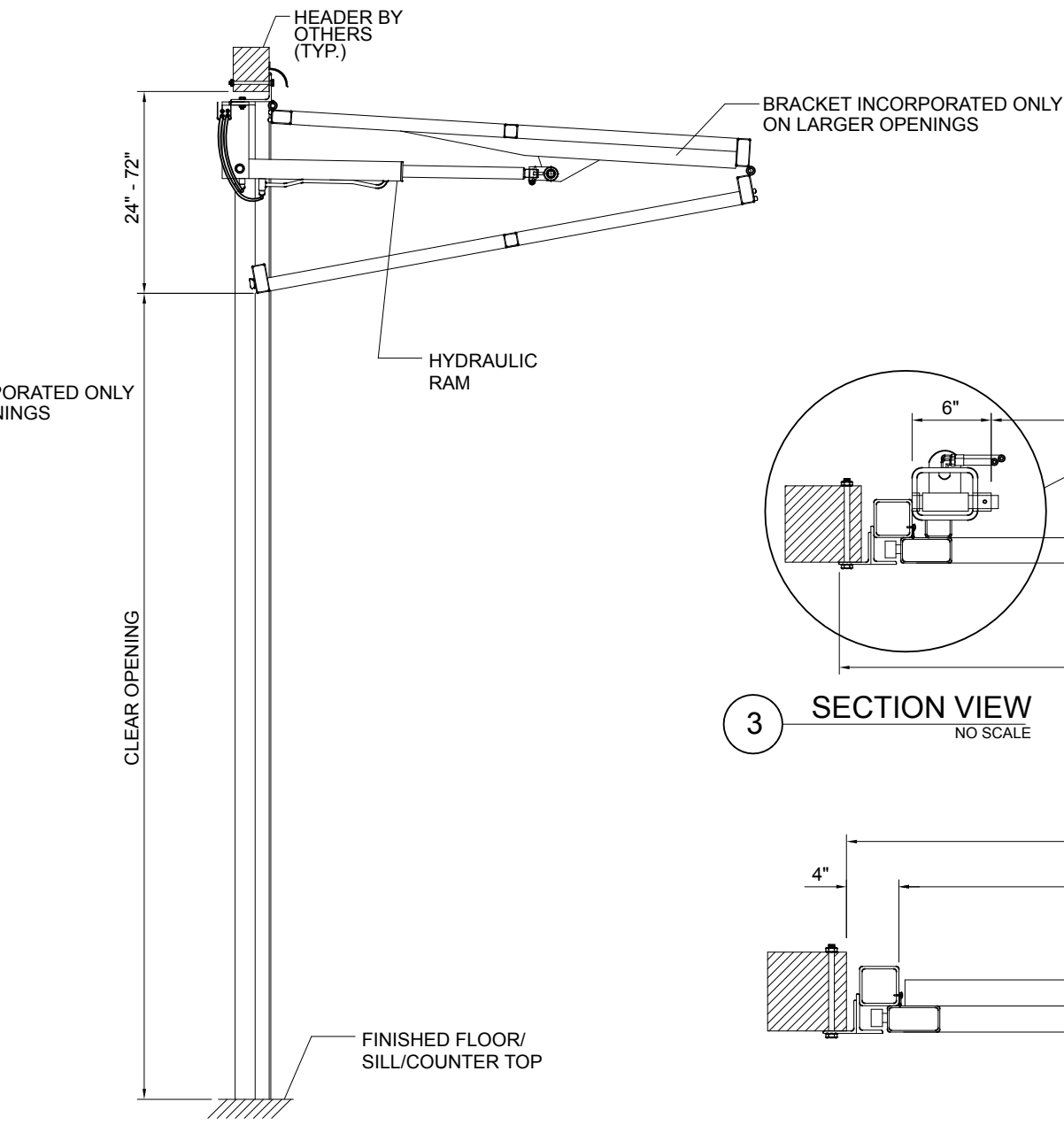
ALL ALUMINUM FRAMING DETAILED HEREIN IS DESIGNED TO
MEET THE REQUIREMENTS OF THE CURRENT FLORIDA
BUILDING CODE (FBC 2014 5TH EDITION).

FRAMING - INSULATE/LAMINATED STANDARD PRESSURE
MODIFIED CURTAIN WALL SYSTEM FOR VENEER APPLICATION

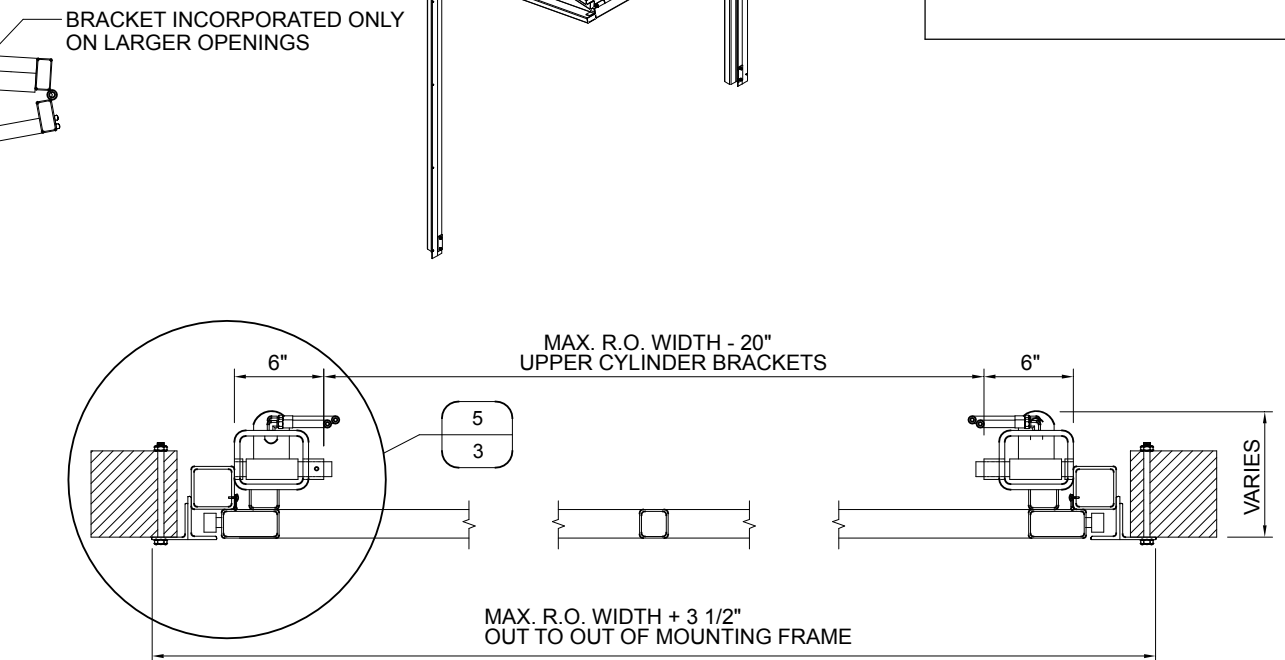
GLASS - 1 5/16" CLEAR LAMINATED
1/4" CLEAR TEMPERED - 1/2" AIRSPACE - 1/4" CLEAR HEAT STR.



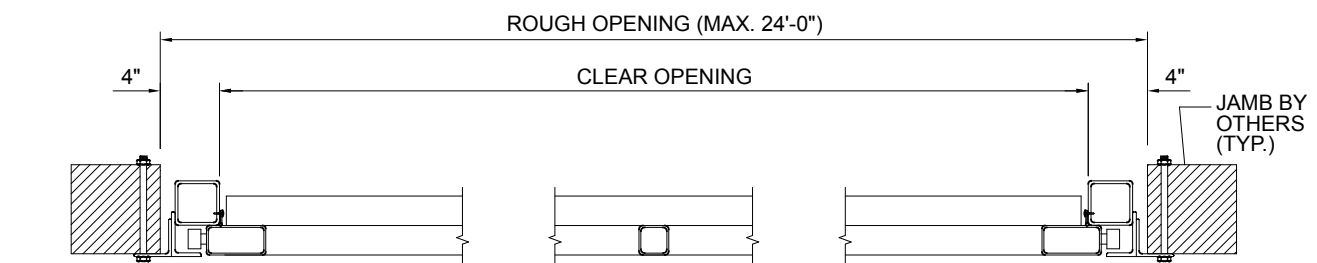
1 VERTICAL SECTION
NO SCALE



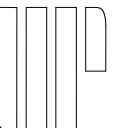
2 VERTICAL SECTION
NO SCALE



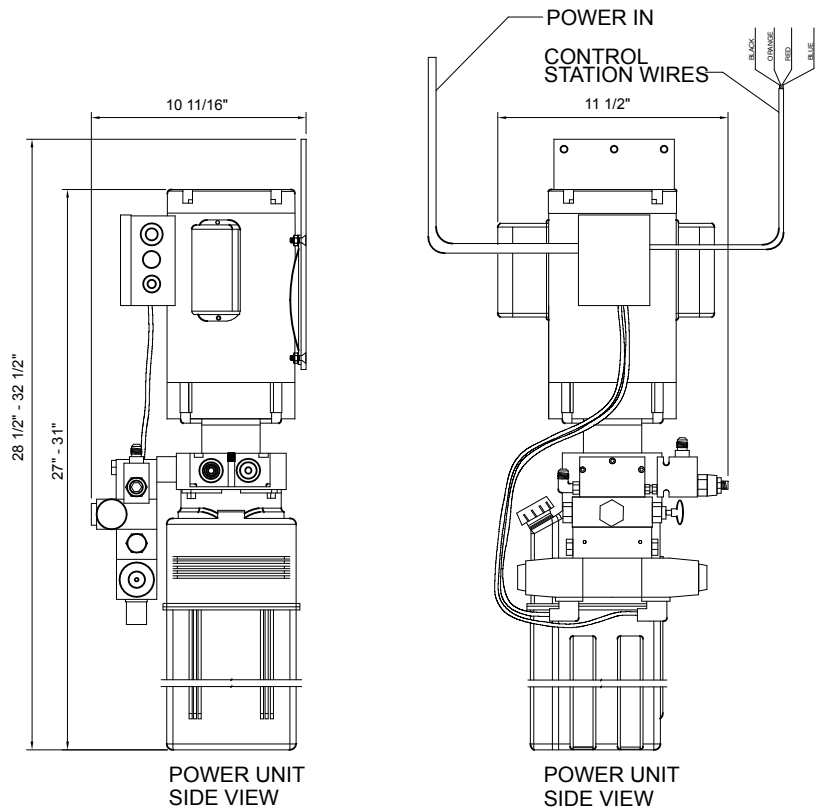
3 SECTION VIEW
NO SCALE



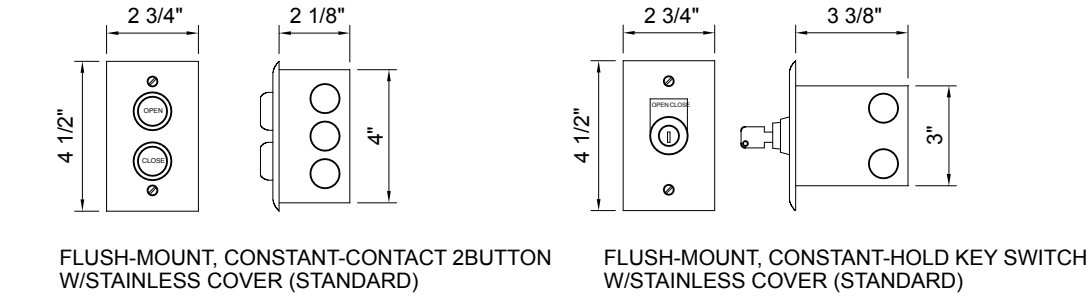
4 SECTION VIEW
NO SCALE



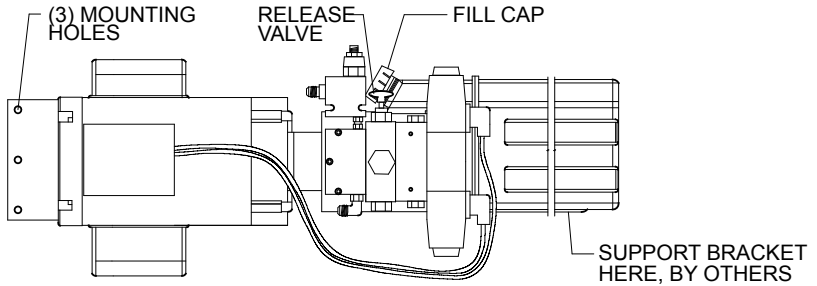
**PRELIMINARY
FOR REFERENCE ONLY**



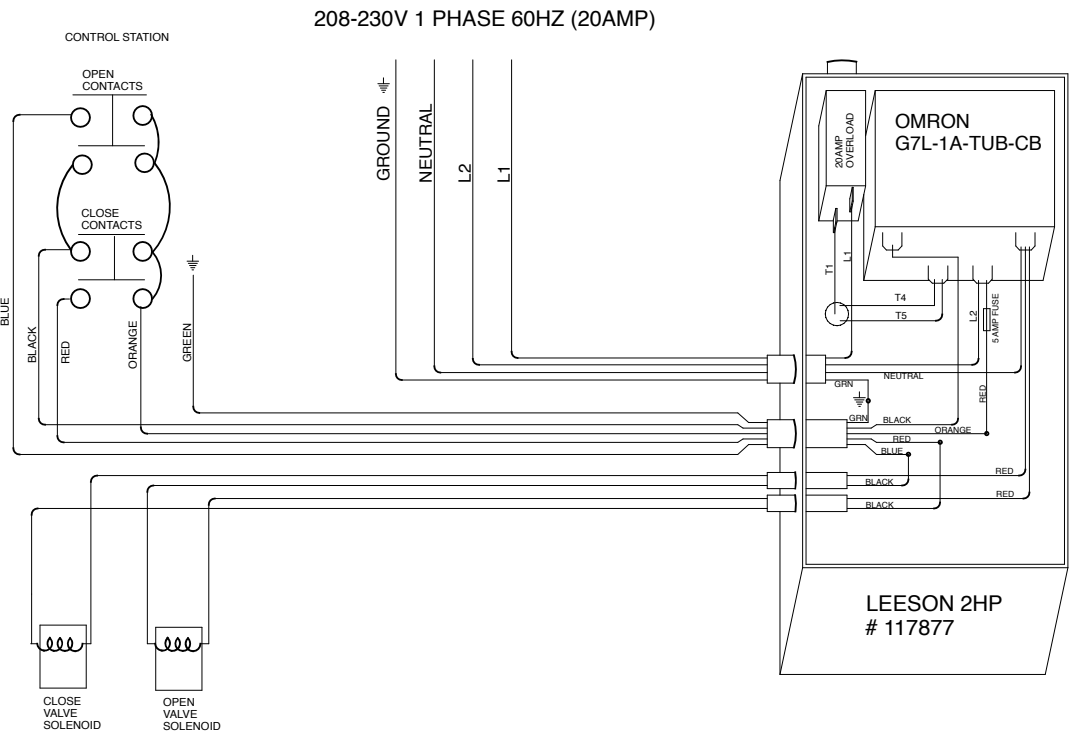
2 MOTOR UNIT - STD. VERT. MOUNT
NO SCALE



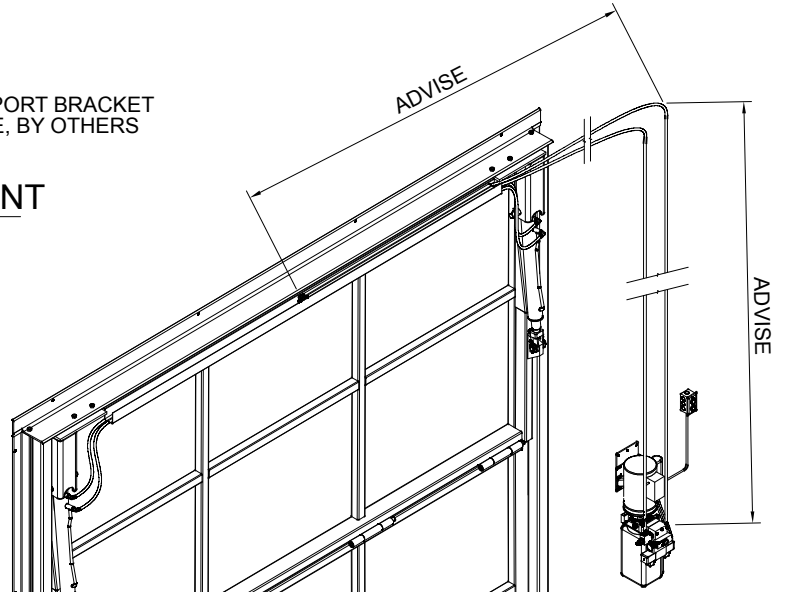
1 CONTROL OPTIONS
NO SCALE



3 MOTOR UNIT - OPTIONAL HORIZ. MOUNT



4 STANDARD WIRING SCHEMATIC



DIMENSION REQUIRED:
POWER UNIT MAY BE LOCATED ANY DISTANCE FROM DOOR.
RELEASE TO PRODUCTION, ADVISE TOTAL LINEAL-FOOT DISTANCE OF HOSE REQUIRED TO REACH FROM TOP/CENTER OF DOOR FRAME TO POWER UNIT. IF PROJECT INCLUDES MULTIPLE DOORS, ADVISE DISTANCE FOR EACH.

5 ISOMETRIC - INTERIOR VIEW