

CITY OF MIAMI BEACH

PLANNING DEPARTMENT

CERTIFICATE OF APPROPRIATENESS APPLICATION

Final Submittal - February 22, 2016

CROWN CASTLE

DISTRIBUTED ANTENNA SYSTEM

MBCC09

1 18th Street, Miami Beach, FL 33139

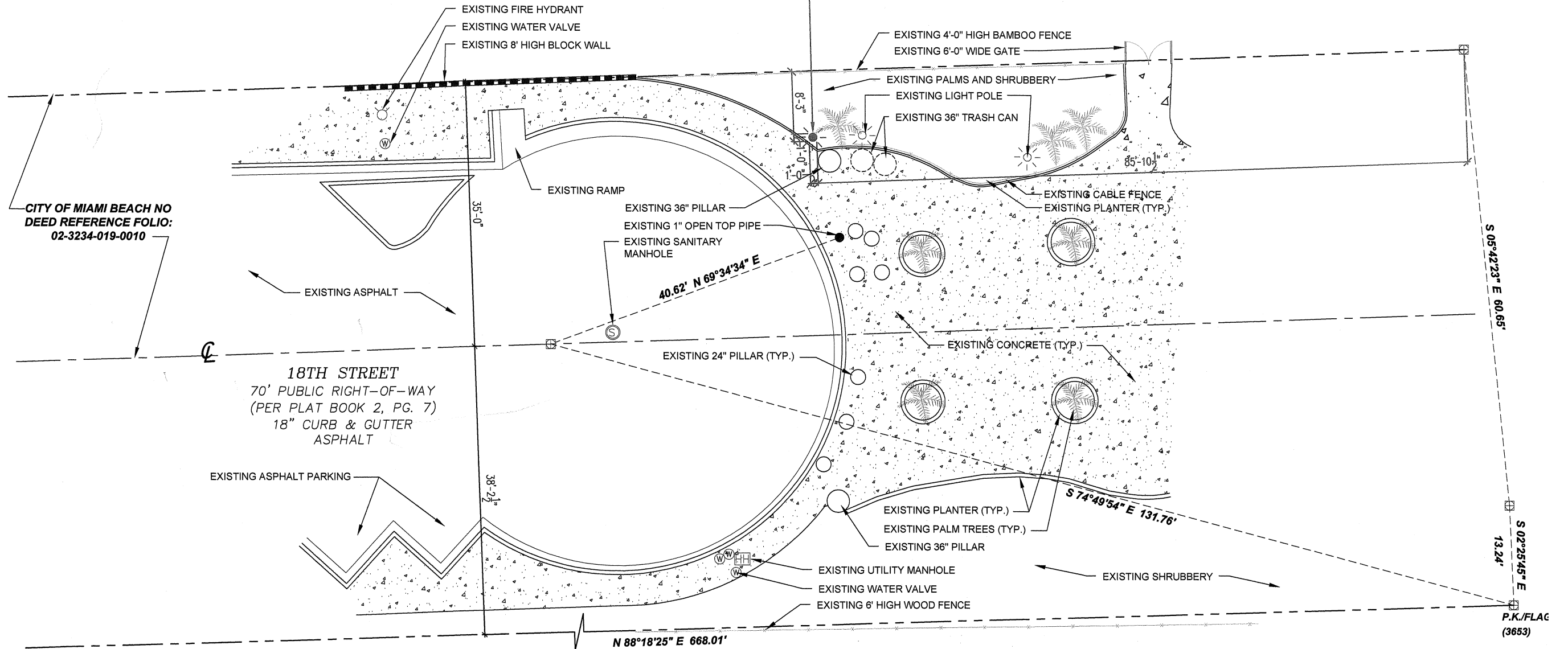
TABLE OF CONTENTS

Crown Castle DAS Nodes

1. Letter of Intent and Certificate of Appropriateness Application
2. Survey
3. Proposed Site Plan
4. Aerial Location Photo and Location Map
5. Comprehensive Location Site Plan
 - South Nodes Enlarged Location Site Plan
 - Central Nodes Enlarged Location Site Plan
 - Belle Island Nodes Enlarged Location Site Plan
 - North Nodes Enlarged Location Site Plan
6. Contextual Photo Image
7. Co-location Restrictions Letter
8. Existing Site Photos
9. 12” Ion Utility Pole Specification Sheet
10. 12” Ion Utility Pole BOM Specification Sheet
11. Color Chart for 12” Ion Utility Pole

**LOT 1
FISHER'S 1ST SUBDIVISION OF
ALTON BEACH, BLOCK 1
P.B. 2, PG. 77**

PROPOSED DAS NODE
LATITUDE- N 25°47'38.515"
LONGITUDE- W 80°07'39.698"
X=943180.459 Y=531782.145

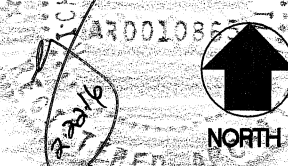


**LOT 10
FISHER'S 1ST SUBDIVISION OF
ALTON BEACH, BLOCK 28
P.B. 2, PG. 77**

**CROWN CASTLE DAS
NODE MBCC09**

PROPOSED SITE PLAN

N.T.S.
February 22, 2016
R.J. HEISENBOTTE ARCHITECTS, P.A.
2199 PONCE DE LEON BLV, CORAL GABLES, FLORIDA 33134
PHONE: 305.446.7799 / FAX: 305.446.9275
FLORIDA REGISTRATION NUMBER: AR 0010865



MBCC09

1 18th St, Miami Beach, FL 33139 Photosim



MBCC09

1 18th St, Miami Beach, FL 33139 Photosim

