

GENERAL PLANTING NOTES AND SPECIFICATIONS:

GENERAL

- EXISTING TREES DESIGNATED TO REMAIN SHALL BE PROTECTED DURING ALL CONSTRUCTION PHASES. ANY TREES OR SHRUBS SCARRED OR DESTROYED DESIGNATED TO REMAIN WILL BE REPLACED AT THE CONTRACTOR'S EXPENSE, WITH SIMILAR SPECIES, SIZE AND QUALITY.
- EXISTING TREES DESIGNATED TO BE STORED OFF-SITE, SHALL BE PROTECTED AND CARED FOR ACCORDINGLY TO INDUSTRY STANDARDS. ANY TREES OR SHRUBS SCARRED OR DESTROYED WILL BE REPLACED AT THE CONTRACTOR'S EXPENSE, WITH SIMILAR SPECIES, SIZE AND QUALITY.
- LANDSCAPE CONTRACTOR SHALL BECOME FAMILIAR WITH ALL UNDERGROUND UTILITIES OR STRUCTURES PRIOR TO DIGGING. LANDSCAPE CONTRACTOR SHALL REPAIR ALL DAMAGE TO UNDERGROUND UTILITIES, AND/OR CONSTRUCTION CAUSED BY UTILITY DAMAGE, AT NO COST TO THE OWNER.
- ALL PLANT MATERIALS SHALL BE GUARANTEED FOR A PERIOD OF 12 MONTHS AFTER DATE OF SUBSTANTIAL COMPLETION.
- LANDSCAPE CONTRACTOR SHALL VERIFY ALL ESTIMATED QUANTITIES OF MATERIAL SHOWN ON THE DRAWINGS PRIOR TO SUBMITTING HIS BID. PLANTING PLAN TO TAKE PRECEDENCE OVER PLANT LIST.
- EXISTING PLANT MATERIAL NOT SHOWN ON THE PLAN AND IN CONFLICT WITH NEW PLANTING SHALL BE EVALUATED AT THE TIME OF NEW PLANTING INSTALLATION BY THE LANDSCAPE ARCHITECT.
- ALL BUILDING CONSTRUCTION MATERIAL AND FOREIGN MATERIAL SHALL BE REMOVED FROM PLANTING AREAS AND REPLACED WITH 80/20 MIX FILL SOIL, OR AS PER SPECIFICATIONS. ALL ISLANDS IN PARKING LOTS AND AROUND BUILDINGS, SHALL BE EXCAVATED TO A DEPTH OF 3" MIN. AND REPLACED WITH 80/20 PLANT MIX, OR AS PER SPECIFICATIONS.
- ALL PLANT MATERIAL SYMBOLS SHOWN ON LANDSCAPE PLAN SHALL BE CONSIDERED DIAGNOSTIC AND SHOULD BE ADJUSTED IN THE FIELD BY CONTRACTOR TO AVOID ALL UTILITIES AND ALL OTHER OBSTRUCTIONS AFTER CONSULTING THE LANDSCAPE ARCHITECT.
- ALL SIZES SHOWN FOR PLANT MATERIAL ON THE PLAN ARE TO BE CONSIDERED MINIMUM. ALL PLANT MATERIAL MUST MEET OR EXCEED THESE MINIMUM REQUIREMENTS FOR BOTH HEIGHT AND SPREAD. ANY OTHER REQUIREMENTS FOR SPECIFIC SHAPE OR EFFECT AS NOTED ON THE PLAN SHALL ALSO BE REQUIRED FOR ACCEPTANCE. ALL TREES TO HAVE SINGLE TRUNK, UNLESS OTHERWISE NOTED ON THE PLANS OR PLANT LIST.
- SITE PREPARATION SHALL INCLUDE THE EXCAVATION AND REMOVAL OF ANY WEEDS, GRASS, AS WELL AS CLEAN-UP OF ANY DEAD MATERIAL AND FINISH GRADING PER THE SPECS.
- THE LANDSCAPE CONTRACTOR SHALL AT ALL TIMES KEEP THE JOB SITE CLEAN AND FREE FROM ACCUMULATION OF WASTE MATERIAL, DEBRIS, AND RUBBISH.
- THE LANDSCAPE CONTRACTOR SHALL EXERCISE CAUTION TO PROTECT ANY NEW HARDSCAPE CONSTRUCTION OR IRRIGATION. ANY DAMAGE SHALL BE REPLACED OR REPAIRED TO THE ORIGINAL STATE BY THE LANDSCAPE CONTRACTOR AT NO ADDITIONAL COST TO THE OWNER.
- ALL PLANT MATERIAL TO BE FLORIDA #1 OR BETTER, AS DEFINED BY THE FLORIDA DEPARTMENT OF AGRICULTURE'S CODES AND STANDARDS FOR NURSERY PLANTS PART I AND II.
- MULCH ALL PLANTING AREAS WITH SHREDDED ORGANIC MULCH TO A MINIMUM DEPTH OF 3", WITH THE EXCEPTION OF BEACH PLANTING.
- ALL PLANTING AREAS WITHIN LIMIT OF WORK SHALL BE 100% FULLY IRRIGATED. THE IRRIGATION CONTRACTOR AWARDED THE BID SHALL COMPLY WITH THE PROPOSED IRRIGATION DESIGN.
- ON-SITE LAYOUT OF PLANT MATERIAL MUST BE COORDINATED WITH THE LANDSCAPE ARCHITECT PRIOR TO INSTALLATION. I.A. TO BE GIVEN A MIN. OF (1) WEEK NOTICE TO REVIEW PRIOR TO IMPLEMENTATION.
- LANDSCAPE CONTRACTOR TO INCLUDE REMOVAL, CORRECTIVE PRUNING AND/OR REPLACEMENT. ANY CORRECTIVE ACTIONS REQUIRED SHALL BE PERFORMED IN ACCORDANCE WITH MIAMI DADE COUNTY CODE, ANSI A-300 (PARTY PRUNING STANDARDS AND OR AN ISSUED EPM TREE OR ENVIRONMENTAL PERMIT.
- TREE PROTECTION BARRIERS MUST BE INSTALLED AT THE DRIP LINES OF ALL TREES AND PALMS TO REMAIN OR BE RELOCATED PRIOR TO THE START OF CONSTRUCTION ACTIVITIES ON-SITE AND SHALL REMAIN IN PLACE UNTIL CONSTRUCTION HAS COMPLETED.
- MULCH SHALL NOT BE APPLIED WITHIN 6" OF ANY TREE OR PALM TRUNKS THAT ARE INSTALLED OR INCORPORATED INTO THE PROJECT FOR ROW TREES/PALMS. PLEASE UTILIZE AMERIGROW (PREMIUM PINEBARK BROWN) SHREDDED MULCH OR A CITY APPROVED ALTERNATIVE.
- SHOULD ANY CORRECTIVE STRUCTURAL PRUNING BE NECESSARY FOR TREES PROPOSED TO REMAIN ON-SITE, DUE TO CLEARANCE, SAFETY OR FOR CONSTRUCTION RELATED REASONS THE PRUNING SHALL BE PERFORMED BY AN ISA OR ASCA CERTIFIED ARBORIST IN ACCORDANCE WITH THE LATEST VERSION OF THE ANSI A-300 PRUNING STANDARDS AND GOOD HORTICULTURAL PRACTICES. THE CITY URBAN FORESTER SHALL BE PROVIDED WITH A WRITTEN COPY OF THE PROPOSED PRUNING PLAN INCLUDING THE REASONS WHY PRUNING IS NECESSARY PRIOR TO THE PRUNING ACTIVITIES TAKING PLACE.
- CARE SHALL BE TAKEN TO AVOID UTILITY OR CONSTRUCTION TRENCHING THROUGH EXISTING TREE OR PALM DRIP LINES OF TREES SLATED TO REMAIN IN PLACE OR BE RELOCATED. IF CONSTRUCTION REQUIRES THE CUTTING OF ANY ROOTS WITH A DIAMETER OF 2" OR GREATER, ROOTS SHALL BE CLEANLY CUT WITH A SHARP TOOL, AS DIRECTED BY AN ISA CERTIFIED ARBORIST AND IN ACCORDANCE WITH THE ANSI A-300 STANDARDS. CUT ROOTS SHOULD BE IMMEDIATELY COVERED WITH SOIL TO PREVENT DRYING. ROOTS SHOULD NOT BE TORN OR BROKEN BY HEAVY EQUIPMENT SHREDDED, RAGGED OR BROKEN ROOTS ENDS SHOULD BE NOTIFIED IN WRITING AND AN ARBORIST SHOULD BE CONSULTED PRIOR TO ANY ROOT PRUNING TAKING PLACE.

HANDLING AND TRANSPORTATION

- TREES/PALMS SHALL BE PROPERLY HANDLED DURING EXCAVATION, MOVING, STORAGE, RELOCATION, AND REPLANTING. DO NOT SCAR OR OTHERWISE DAMAGE TRUNKS AND BRANCHES, AND AVOID BREAKING LIMBS, BRANCHES, AND FRONDS. DAMAGE TO TREE/PALM MAY BE CAUSE FOR ITS REJECTION, AND MAY REQUIRE MITIGATION REPLACEMENT.
- CONTRACTOR SHALL BE RESPONSIBLE FOR THE MANUAL WATERING OF ALL RELOCATED TREES/PALMS DURING MAINTENANCE PERIOD, UNTIL FINAL ACCEPTANCE OF ALL WORK BY THE LANDSCAPE ARCHITECT AND/OR CLIENT.
- LANDSCAPE CONTRACTOR SHALL BE RESPONSIBLE FOR INSTALLING AND MAINTAINING TREE/PALM PROTECTION. INSTALL BARRICADE OF GALVANIZED WELDED WIRE FABRIC OR PLASTIC MESH TO ENCOMPASS THE DRIPLINE OF THE TREE/PALM. BARRICADE SHALL BE PLUMB, TAUT AND STURDY. BARRICADE TO BE LEFT UP AND MAINTAINED UNTIL DIRECTED TO REMOVE BY LANDSCAPE ARCHITECT.

WARRANTY

- LANDSCAPE CONTRACTOR SHALL PROVIDE A MINIMUM OF ONE (1) YEAR GUARANTEE FOR ALL RELOCATED TREES/PALMS AFTER FINAL ACCEPTANCE BY LANDSCAPE ARCHITECT AND/OR CLIENT.
- LANDSCAPE CONTRACTOR SHALL REMOVE COMPLETELY AND DISPOSE OF OFF-SITE, ANY RELOCATED TREE/PALM THAT FAILS TO THRIVE AS DETERMINED BY THE LANDSCAPE ARCHITECT.
- FOR ANY RELOCATED TREE/PALM REMOVED DUE TO ITS FAILURE TO THRIVE, LANDSCAPE CONTRACTOR SHALL BE RESPONSIBLE FOR REPLACING AND INSTALLING WITH A SPECIMEN OF EQUAL OR GREATER SPECIFICATION OF ORIGINAL REPLACEMENT MATERIAL. SHALL BE APPROVED BY LANDSCAPE ARCHITECT PRIOR TO PROCUREMENT, PREPARATION OR INSTALLATION.

TREE / PALM RELOCATION NOTES

- VERIFY AND INSURE ALL TREES/PALMS IDENTIFIED ON THE CONSTRUCTION DRAWINGS AND THOSE TAGGED IN THE FIELD CORRESPOND AS TO NUMBER AND DESCRIPTION. ANY DISCREPANCIES SHALL BE BROUGHT TO THE ATTENTION OF THE LANDSCAPE ARCHITECT IMMEDIATELY PRIOR TO PREPARATION.
- LANDSCAPE CONTRACTOR SHALL BE RESPONSIBLE FOR TREE/PALM PROTECTION OF ALL VERIFIED MATERIAL. INSTALL BARRICADE OF GALVANIZED WELDED WIRE FABRIC OR PLASTIC MESH TO ENCOMPASS THE DRIPLINE OF THE TREE/PALM. BARRICADE TO BE REMOVED UPON COMPLETION OF BACKFILLING.
- TREE ROOT BALL SHALL BE ROOT PRUNED 50% (EQUALLY AROUND TREE) 60 DAYS PRIOR TO TRANSPLANT. THE REMAINING 50% TO BE PRUNED 30 DAYS PRIOR TO TRANSPLANTING.
- PALMS TO BE RELOCATED MAY BE IMMEDIATELY RELOCATED AFTER DIGGING.
- ROOTS TO BE PRUNED WITH CLEAN, SHARP TOOLS. ROOTS ONE (1) INCH AND LARGER IN DIAMETER SHALL BE NEATLY AND CLEANLY CUT WITH A HAND SAW OR OTHER APPROVED CUTTING IMPLEMENT.
- LANDSCAPE CONTRACTOR TO APPLY MYCORRHZ APPLICATION TO ROOTS DURING ROOT PRUNING AND DIGGING OPERATIONS. ALL PRUNING TO BE REVIEWED AND APPROVED BY LANDSCAPE ARCHITECT PRIOR TO PRUNING.
- DEAD WOOD, CROSSING BRANCHES, AND GENERAL CANOPY PRUNING SHALL BE PERFORMED BY THE LANDSCAPE CONTRACTOR IMMEDIATELY AFTER COMPLETION OF ROOT PRUNING OF EACH SPECIMEN TO BE RELOCATED, ALL PRUNING TO BE REVIEWED AND APPROVED BY LANDSCAPE ARCHITECT PRIOR TO PRUNING.
- ROOT BALL SIZE TABLE:

TREE/PALM CALIPER	MINIMUM ROOT BALL DIAMETER
1" - 1 1/2"	16"
1 1/2" - 1 3/4"	22"
1 3/4" - 2"	24"
2" - 2 1/2"	28"
2 1/2" - 3 1/2"	32"
3 1/2" - 4"	38"
4" - 4 1/2"	40"
4 1/2" - 5"	44"
5" - 5 1/2"	48"

NOTE: ROOT BALL SIZES SHALL EXCEED MINIMUM STANDARDS SET FORTH IN "GRADES AND STANDARDS FOR NURSERY PLANTS, PART II, PALMS AND TREES, FLORIDA DEPARTMENT OF AGRICULTURE"

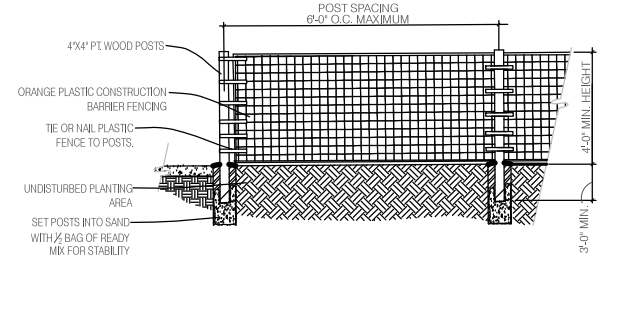
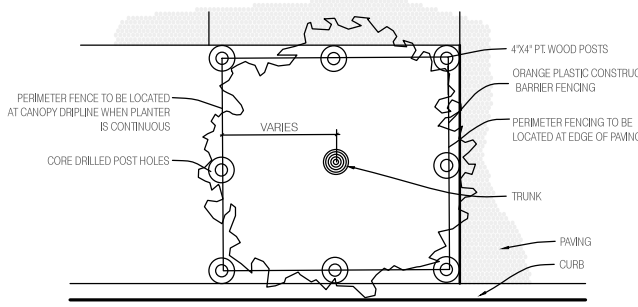
- MAINTAIN COMPACT ROOT BALLS. ROOT BALLS SHALL BE COMPLETELY ENCLOSED WITHIN A BURLAP COVERING OR STRETCH WRAP AS COMMONLY USED WITHIN THE HORTICULTURAL INDUSTRY IN TWO COMPLETE LAYERS.
- ALL TREES TO BE FLOODED FOR FIVE (5) DAYS PRIOR TO TRANSPLANT.
- ALL PITS TO BE FILLED THE SAME DAY AND WITH CLEAN FILL IN 18 INCH LIFTS/LAYERS, EACH THEN COMPACTED BEFORE A SUBSEQUENT 18" LIFT LAYER IS PLACED. REPEAT UNTIL BACKFILL IS FLUSH WITH SURROUNDING GRADE.
- CORRECT ALL PROBLEMS RELATED TO SETTLEMENT, EROSION, OR OTHER DISTRESS OF EXCAVATED/BACKFILLED PIT FROM WHICH TREE/PALM HAS BEEN REMOVED, INCLUDING THE COMPLETE AND THOROUGH REMOVAL OF ALL RESIDUAL ROOTS, STUMPS AND PORTIONS AND PARTS THEREOF.
- RESTORE THE SURFACE WITH MATERIAL TO MATCH ADJACENT AREAS. MATERIAL TO BE APPROVED BY LANDSCAPE ARCHITECT. CONTRACTOR TO PROVIDE A MINIMUM ONE YEAR WARRANTY ON SETTLING AND PLANT MATERIAL.
- LANDSCAPE CONTRACTOR IS RESPONSIBLE FOR ALL MATERIAL INCLUDING BUT NOT LIMITED TO BACKFILL MATERIAL, PROTECTION FENCING, FLAGGING, ROOT BALL BURLAP OR SHRINK WRAP.

INSTALLATION

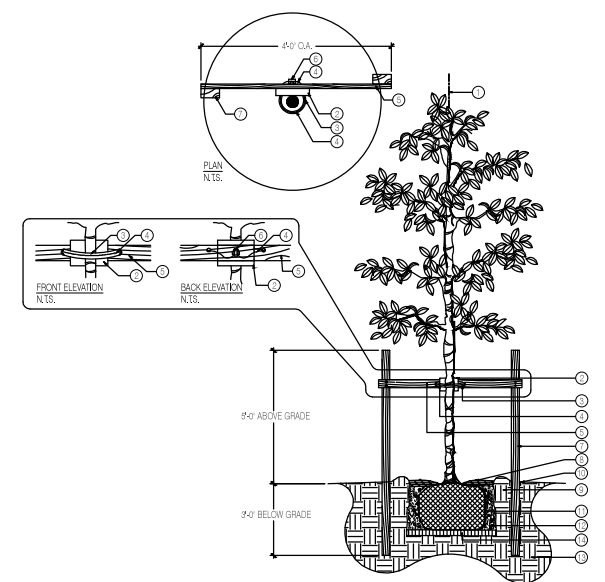
- VERIFY ALL UNDERGROUND CONSTRUCTIONS OR OBSTRUCTIONS, UTILITIES, SEPTIC SYSTEMS, ETC.) ARE IDENTIFIED, LOCATED AND CLEARLY MARKED AS APPROPRIATE PRIOR TO EXCAVATION OF PLANTING PITS FOR RELOCATED TREES AND PALMS. ANY UNKNOWN OBJECTS SHALL BE BROUGHT TO THE ATTENTION OF THE LANDSCAPE ARCHITECT IMMEDIATELY PRIOR TO INSTALLING AND BACKFILLING.
- LANDSCAPE CONTRACTOR TO FLAG ALL PROPOSED PLANT LOCATIONS FOR LANDSCAPE ARCHITECTS APPROVAL PRIOR TO INSTALLATION.
- PLANTING PITS SHALL BE A MINIMUM OF TWO (2) TIMES LARGER IN DIAMETER AND ONE AND A HALF (1-1/2) TIMES LARGER IN DEPTH THAN THE ROOT BALL. ROUGHEN SIDES AND BOTTOM OF PIT.
- AFTER EACH PLANTING PIT IS EXCAVATED, PLACE SUFFICIENT PLANTING MIX IN BOTTOM OF EXCAVATION, AND SEAT PLANT INSURING TOP OF ROOT BALL IS FLUSH WITH IMMEDIATELY ADJACENT FINAL OR PROPOSED GRADE.
- LANDSCAPE CONTRACTOR TO INSURE ALL PLANT MATERIAL IS INSTALLED AT THE CORRECT ELEVATION. REFER TO GRADING PLAN.
- LANDSCAPE CONTRACTOR TO INSURE ALL ROOT FLARES ARE EXPOSED.
- CENTER EACH RELOCATED TREE/PALM IN ITS PLANTING PIT AND BACKFILL WITH SPECIFIED PLANTING MIX.
- PLACE PLANTING MIX IN 12 INCH LIFTS/LAYERS AROUND ROOT BALL AND COMPACT UNTIL ALL VOIDS ARE FILLED WITH COMPACTED PLANTING MIX.
- BUILD SOIL SAUCER OF MOUNDED EXCAVATED SOIL AROUND PERIMETER OF EACH PLANTING PIT TO FORM WATERING BASIN. MULCH TO A DEPTH OF 3".

TREE PROTECTION MATERIALS

- BARRICADE SHALL BE GALVANIZED AND WELDED WIRE FABRIC: 1X1" MESH, 18G, 48" IN HEIGHT RECOMMENDED CONTACT.
- WIRE CLOTH MESH
- POSTS: 4X4" WOOD, SUFFICIENT TO HOLD FABRIC PLUMB AND TAUT.
- ACCESS: PROVIDE HINGED, LATCHING GATE.
- METAL GATE: SHALL PERMIT FREE PASSAGE OF WATER, AIR AND SHALL ACCEPT CONSTRUCTION TRAFFIC WITHOUT EXCESSIVE DEFLECTION.
- AERATION PIPE: RIGID PVC PERFORATED DRAINPIPE, 3 INCH DIAMETER X 4 FEET LONG, WITH PERFORATED CAP FILL WITH WASHED PEA GRAVEL.

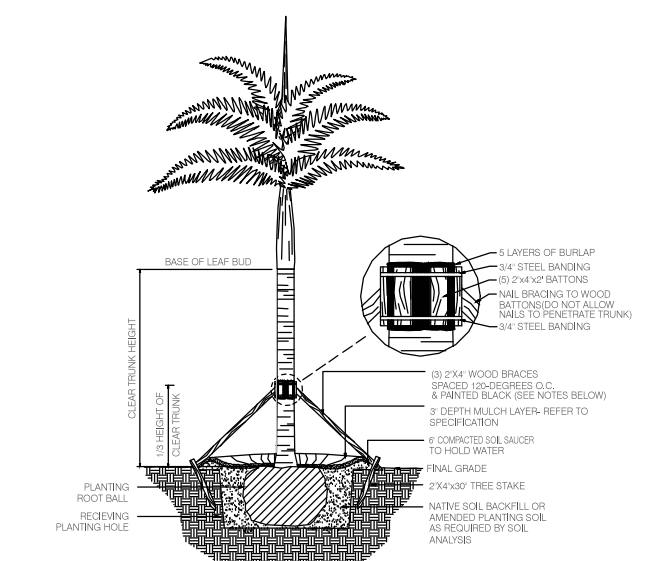


1 TREE PROTECTION DETAIL
SCALE: 1/8\"/>



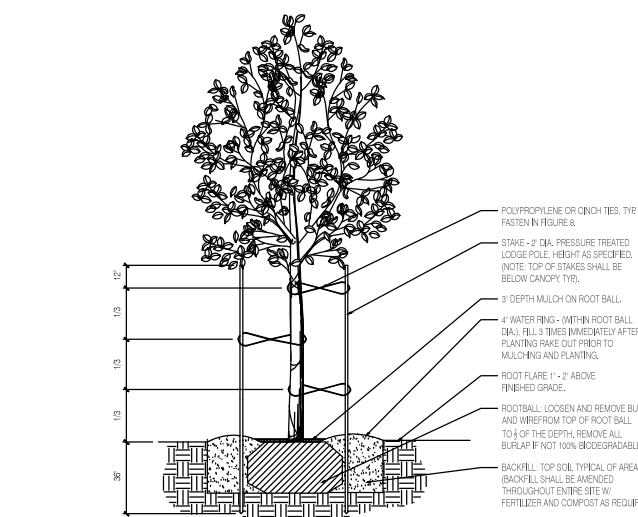
- KEY**
- SET TREE PLUMB IN PLANTING PIT.
 - PROTECT TREE TRUNK WITH 1 NOMACO ® STYROFOAM PADDING GUARDS, #6048048, AS SPECIFIED, OR APPROVED EQUAL.
 - AMAZON HOUSE AND RUBBER ®, 1 1/2" AIR HOSE #1146 OR APPROVED EQUAL, TO COVER 10 GAUGE WIRE.
 - 1 10 GAUGE GALVANIZED WIRE, WIRE PRODUCT #, OR APPROVED EQUAL.
 - 1 2" X 4" X 4" NON TREATED LANDSCAPE TIMBER AS SPECIFIED. FASTEN WITH 4 3/8" DECK SCREWS TO 2" X 4" X 8" PT. LANDSCAPE TIMBERS.
 - 1 1/2" MALLEABLE CLAMP FASTENER FOR WIRE. SUPPLIER: LANDSCAPE WIRE ® OR APPROVED EQUAL.
 - 2 2" X 4" X 8" PT. LANDSCAPE TIMBER AS SPECIFIED.
 - 3" MULCH DEPTH LAYER ON ROOT BALL.
 - 4" WATER RING, (WITHIN ROOTBALL DIA.), FILL 3 TIMES IMMEDIATELY AFTER PLANTING. RAKE OUT PRIOR TO MULCHING AND PLANTING.
 - ROOT FLARE: 1" ABOVE FINISHED GRADE.
 - BAG OR CONTAINERIZED ROOTBALL. REMOVE ALL BURLAP IF NOT 100% BIODEGRADABLE. REMOVE CONTAINER FROM ROOTBALL PRIOR TO PLANTING.
 - BACKFILL, TOP SOIL TYP. OR AREA. BACKFILL SHALL BE AMENDED THROUGHOUT ENTIRE SITE WITH FERTILIZER AND COMPOST AS REQUIRED.
 - UNDISTURBED SUBGRADE.
 - COMPACT SOIL IMMEDIATELY BENEATH THE ROOT BALL TO PREVENT SETTLING.
- NOTES:**
- CONTRACTOR TO ASSURE PERCOLATION IN TREE PITS.
 - NO MULCH WITHIN 4" OF TRUNK.

2 MEDIUM TREE PLANTING AND STAKING DETAIL
SCALE: 1/8\"/>



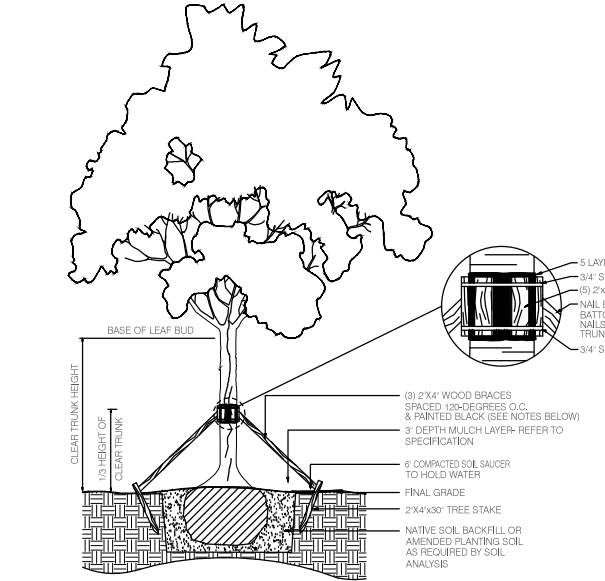
- NOTES**
- PALMS OVER 3' GW HEIGHT, USE MINIMUM (4) 4X4 BRACING AND STAKES.
 - PRIMARY STAKES SHOULD BE PLACED PARALLEL TO WALKWAYS WHENEVER POSSIBLE.
 - RECEIVING PLANTING HOLE SHALL BE APPROXIMATELY 1/3 LARGER THAN ROOTBALL.
 - BUD SHALL BE PERPENDICULAR TO THE GROUND PLANE.
 - NO SCARRED OR BLACKENED TRUNKS.
 - AMENDED SOIL MIX TO BE ADDED AT THE TIME OF PLANTING IF NEEDED. SHALL CONSIST OF A RATIO MIX OF 80% CLEAN SILICA SAND AND 20% SCREENED, PLUVERIZED TOPSOIL AS NEEDED.

3 PALM PLANTING AND STAKING DETAIL
SCALE: 1/8\"/>

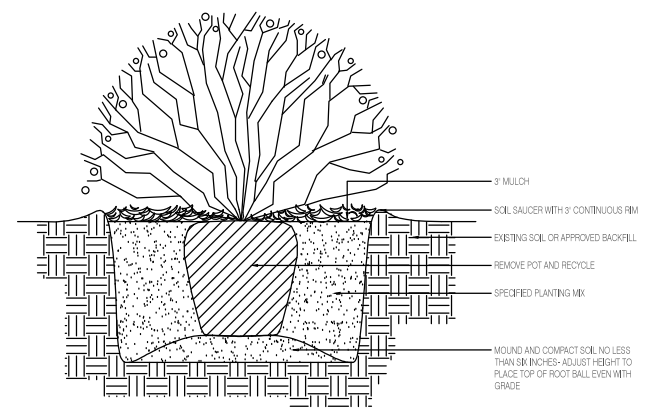


- NOTES**
- PRUNING: REMOVE ANY BROKEN BRANCHES.
 - NO MULCH WITHIN 4" OF TRUNK, TYP.
 - USE THREE LOGGE POLES FOR ADDED STABILITY.

4 SMALL TREE PLANTING AND STAKING DETAIL (UP TO AND INCLUDING 2.5\"/>



5 LARGE TREE PLANTING AND STAKING DETAIL
SCALE: 1/8\"/>



6 SHRUB/ACCENT PLANTING DETAIL
SCALE: 1/8\"/>

1611

moxy
HOTELS

915 Washington Avenue
Miami Beach, FL 33139

OWNER

LIGHTSTONE

460 Park Avenue
New York, NY 10022
O: 212.616.9969

INTERIOR DESIGNER

ROCKWELLGROUP

5 Union Square West
New York, NY 10003
O: 212.463.0334

LIGHTING DESIGNER

BOLD

227 West 29th Street
New York, NY 10001
O: 212.674.6500

LANDSCAPE ARCHITECT

NATURALFICIAL

Landscape Architecture + Design
6915 Red Road Suite 224
Coral Gables, FL 33143
O: 305.321.2341 | Firm# LC26000548

KOBI KARP

ARCHITECTURE
INTERIOR DESIGN
PLANNING

Peter N. Anselmo
R.L.A. FL# 6667221

2915 Biscayne Boulevard, Suite 200
Miami, Florida 33137
O: 305.573.1818
F: 305.573.3786

AIA ASID NCARB
License #AR0012578
WWW.KOBIKARP.COM

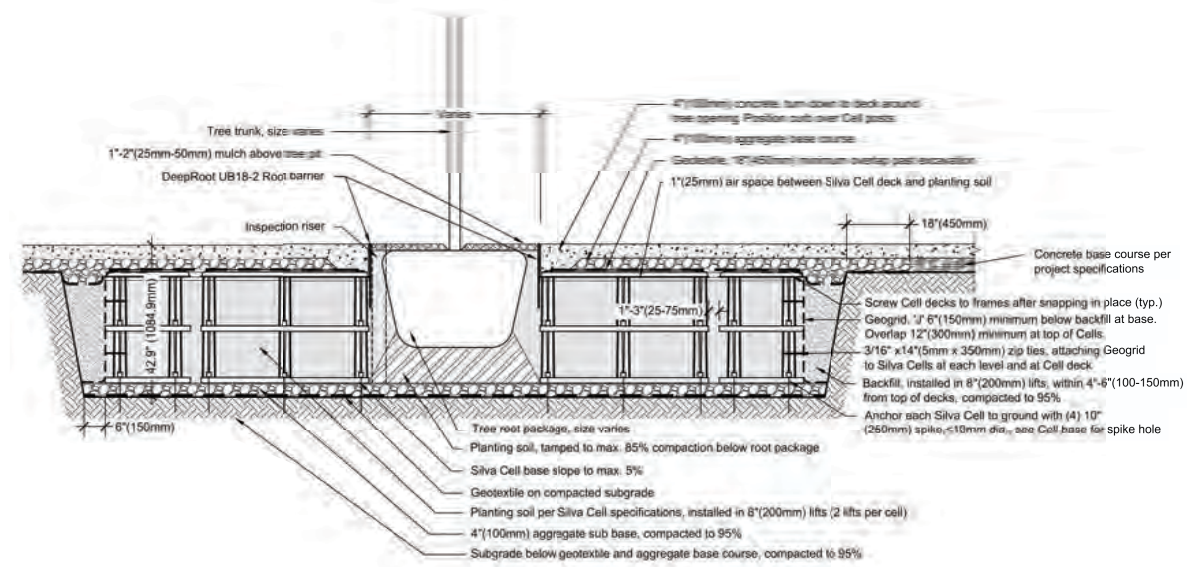
Historic Preservation Board Submission

GENERAL PLANTING DETAILS

SCALE : N.T.S.
08-29-2016

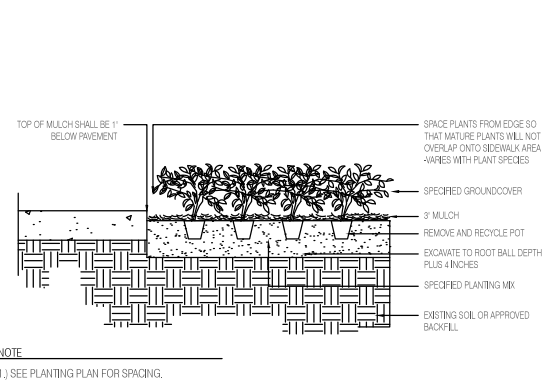
L-3.07

ALL DRAWINGS AND WRITTEN MATERIAL APPEARING HEREIN CONSTITUTE THE ORIGINAL AND UNPUBLISHED WORK OF KOBI KARP AND MAY NOT BE DUPLICATED, USED, OR DISCLOSED WITHOUT THE EXPRESS WRITTEN CONSENT OF KOBI KARP ARCHITECTURE & INTERIOR DESIGN, INC. (c) 2016



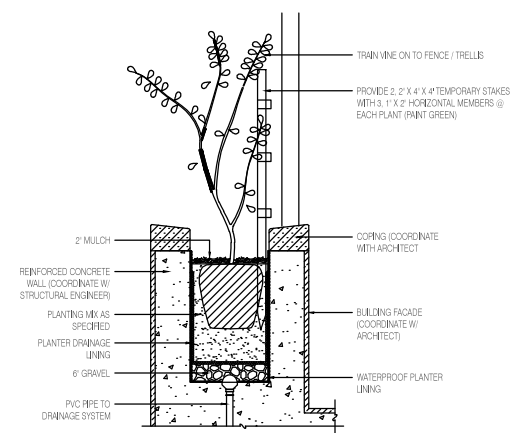
7 SILVA CELL DETAIL - DEEP ROOT GREEN INFRASTRUCTURE, LLC
SCALE: N/A

NOTE:
SIZING, DEPTH & REINFORCEMENT OF ALL STRUCTURAL COMPONENTS TO BE PROVIDED BY STRUCTURAL ENGINEER. ALL COMPONENTS TO BE INSTALLED IN ACCORDANCE WITH MANUFACTURE'S SPECIFICATIONS.

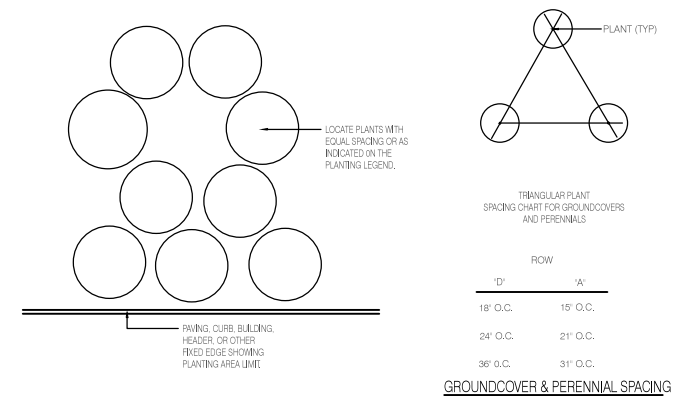


NOTE:
1. SEE PLANTING PLAN FOR SPACING.

8 GROUND COVER PLANTING DETAIL
SCALE: N/A



9 VINE PLANTING DETAIL
SCALE: N/A



10 PLANT SPACING DETAIL
SCALE: N/A

1611
moxy
HOTELS
915 Washington Avenue
Miami Beach, FL 33139

OWNER
LIGHTSTONE
460 Park Avenue
New York, NY 10022
O: 212.616.9969

INTERIOR DESIGNER
ROCKWELLGROUP
5 Union Square West
New York, NY 10003
O: 212.463.0334

LIGHTING DESIGNER
BOLD
227 West 29th Street
New York, NY 10001
O: 212.674.6500

LANDSCAPE ARCHITECT
NATURALFICIAL
Landscape Architecture + Design
6915 Red Road Suite 224
Coral Gables, FL 33143
O: 305.321.2341 | Firm# LC26000548

Peter N. Anselmo
R.L.A. FL# 6667221

KOBI KARP
ARCHITECTURE
INTERIOR DESIGN
PLANNING

2915 Biscayne Boulevard, Suite 200
Miami, Florida 33137
O: 305.573.1818
F: 305.573.3766

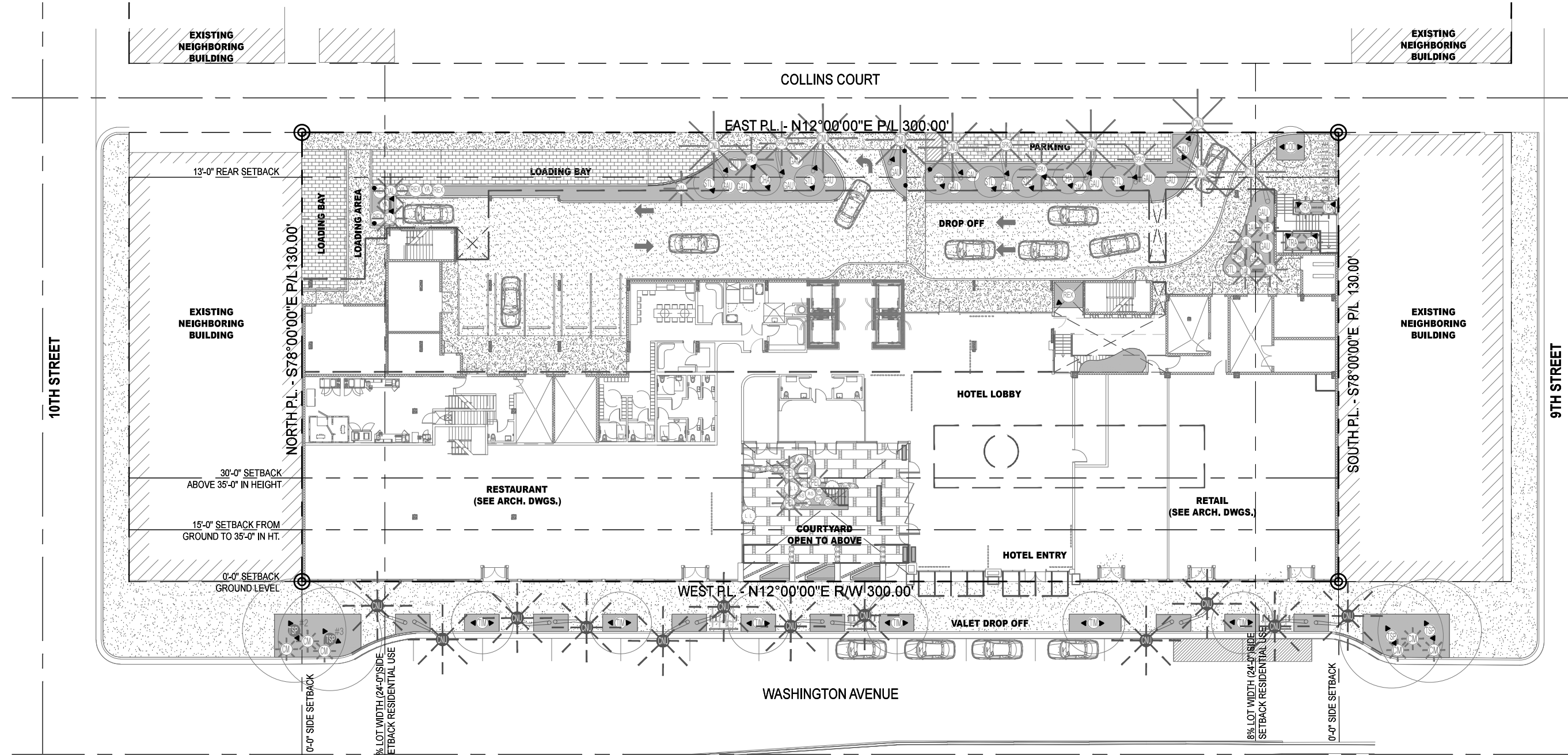
AIA ASID NCARB
License #AR0012578
WWW.KOBIKARP.COM

Historic Preservation Board Submission

GENERAL PLANTING DETAILS
SCALE: N.T.S.
08-29-2016

L-3.08

ALL DRAWINGS AND WRITTEN MATERIAL APPEARING HEREIN CONSTITUTE THE ORIGINAL AND UNPUBLISHED WORK OF KOBI KARP AIA, AND MAY NOT BE DUPLICATED, USED, OR DISCLOSED WITHOUT THE EXPRESS WRITTEN CONSENT OF KOBI KARP ARCHITECTURE & INTERIOR DESIGN, INC. AIA (P) 2016



LVL 1 LANDSCAPE LIGHTING FIXTURE SCHEDULE							
QTY	TYP	SYMBOL	APPLICATION	MANUFACTURER	MODEL NUMBER	DESCRIPTION	COMMENTS
49	A	▲	DIRECTIONAL UP LIGHT WITH 18" STAKE	AURORA LIGHTING	TELLURIDE LED: HSL16 HSL16-12-M-27-CU-60-G/S-BLP	Wattage 12 WATT Optics MEDIUM 25 LED INCANDESCENT 2700K Materials COPPER Shield 60" ANGLED Mount Options G/S GROUND STAKE Finish BRONZE LIVING PATINA	U.L. LISTED FOR WET LOCATION
5	B	●	PATH LIGHT	AURORA LIGHTING	LPL-EXT 18"-36"-LED: LPL-EXT LPL-EXT-T-9-27-G/S-F-BLP	Top Options T-9 LED INCANDESCENT 2700K Mount Options G/S GROUND STAKE Lens FROSTED Finish 2 BRONZE LIVING PATINA	U.L. LISTED FOR WET LOCATION

LIGHTING SPECIFICATION GENERAL NOTES

1. GENERAL REQUIREMENTS

- A. Lighting fixtures and other lighting material shall be as indicated on drawings and as further specified. This equipment shall embody maximum efficiency obtainable and highest standards of workmanship and electrical and mechanical design. All material shall be subject to the approval of the Lighting Consultant and Landscape Designer. Fixture parts and components shall be made of materials appropriate to their use and function and as such shall be resistant to corrosion and thermal and mechanical stresses encountered in the normal application and functioning of the fixtures. The Electrical Contractor shall be responsible for installing fixtures with proper ventilation so as not to exceed the temperature rating of the lighting fixtures or lamps.
- B. Locations of fixtures are shown diagrammatically. Exact location and spacing to be determined by the Landscape Designer and or Lighting Consultant on-site after the installation of the trees.
 - a. Notify the Lighting Consultant about field conditions at variance with plans and/or specifications before commencing installation.
 - b. Coordinate space conditions at variance with other trades before installation of fixtures.

- C. Luminaires shall be delivered to the premises complete (except as noted or specified), including mounting devices and components necessary for the proper installation and operation of the equipment inclusive of lamps.
- D. Blemished, damaged or unsatisfactory fixtures shall be replaced in a manner satisfactory to the Lighting Consultant and Landscape Designer without additional charge.
- E. Electrical Contractor to install louvers, spread lenses and color filters as specified and provide labor to focus all adjustable fixtures. Additionally, Electrical Contractors shall provide 2 people for 4 non - consecutive days to adjust aiming, lamping and coloring of lighting fixtures, under the direction of the Lighting Consultant, Landscape Designer and/or Client. This may include relamping fixtures with different wattages or beam spreads as directed by Lighting Consultant or Landscape Designer. Electrical Contractor shall provide ladders and lifts as necessary. All of this work shall be performed at night or early morning as required by sunlight and site conditions.

1. WARRANTY

- A. All lighting fixtures shall be covered by a minimum two year guarantee against defects in workmanship or material. If fixtures are supplied by the installing contractor the guarantee shall include the labor to replace defective fixtures and in-warranty service program providing for payment of authorized labor charges incurred in replacement of inoperative, in-warranty ballasts.

1611
moxy
HOTELS
915 Washington Avenue
Miami Beach, FL 33139

OWNER
LIGHTSTONE
460 Park Avenue
New York, NY 10022
O: 212.616.9969

INTERIOR DESIGNER
ROCKWELLGROUP
5 Union Square West
New York, NY 10003
O: 212.463.0334

LIGHTING DESIGNER
BOLD
227 West 29th Street
New York, NY 10001
O: 212.674.6500

LANDSCAPE ARCHITECT
NATURALFICIAL
Landscape Architecture + Design
6915 Red Road Suite 224
Coral Gables, FL 33143
O: 305.321.2341 | Firm# LC26000548

Peter N. Anselmo
R.L.A. FL# 6667221

KOBI KARP
ARCHITECTURE
INTERIOR DESIGN
PLANNING

2915 Biscayne Boulevard, Suite 200
Miami, Florida 33137
O: 305.573.1818
F: 305.573.3766

AIA ASID NCARB
License #AR0012578
WWW.KOBIKARP.COM

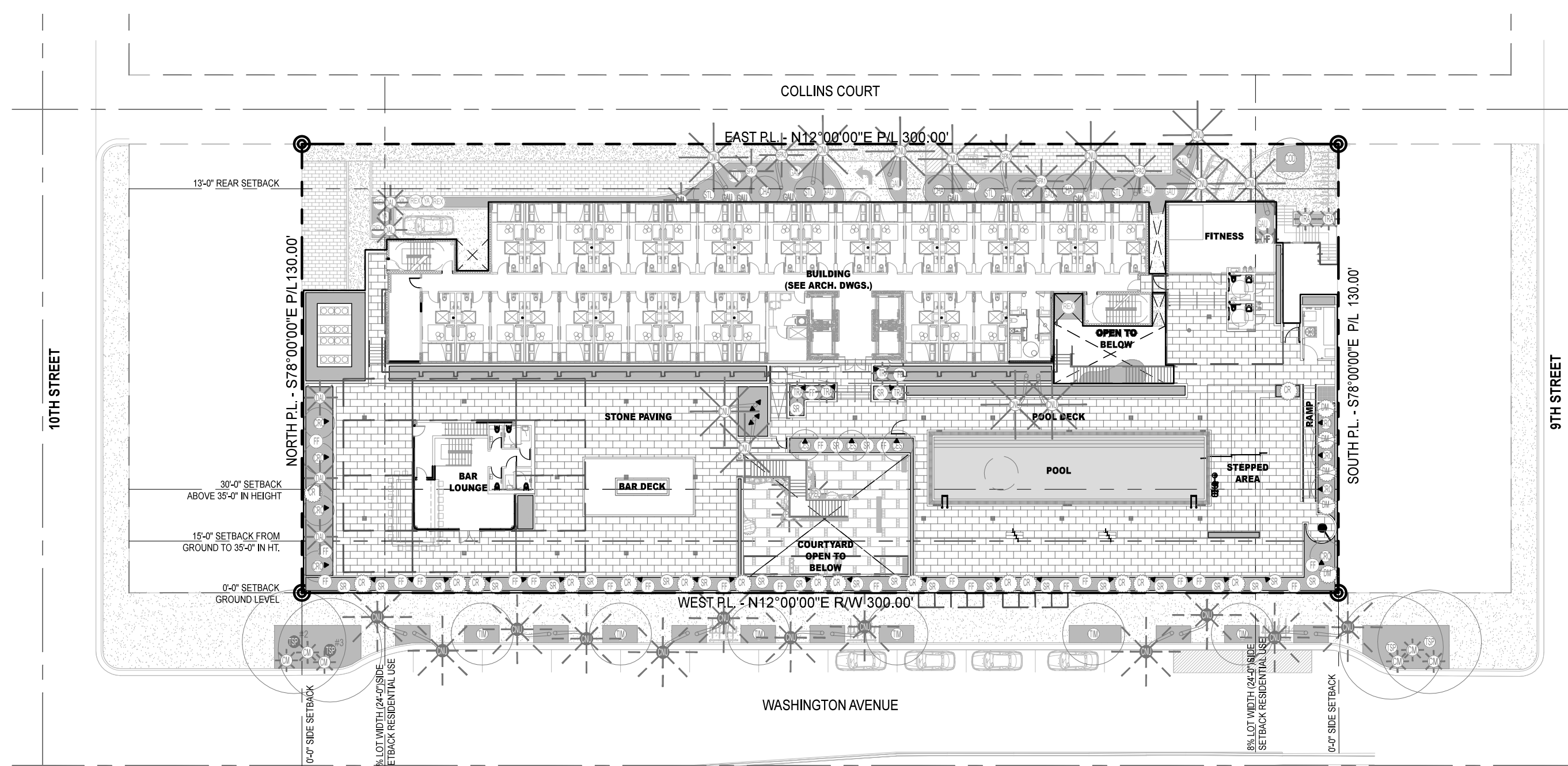
Historic Preservation Board Submission

LVL 1 LANDSCAPE LIGHTING PLAN

SCALE : 1/32" = 1'-0"
08-29-2016

L-4.01

ALL DRAWINGS AND WRITTEN MATERIAL APPEARING HEREIN CONSTITUTE THE ORIGINAL AND UNPUBLISHED WORK OF KOBI KARP AND MAY NOT BE DUPLICATED, USED, OR DISCLOSED WITHOUT THE EXPRESS WRITTEN CONSENT OF KOBI KARP ARCHITECTURE & INTERIOR DESIGN, INC. AIA (P) 2016



LVL 2 LANDSCAPE LIGHTING FIXTURE SCHEDULE							
QTY	TYP	SYMBOL	APPLICATION	MANUFACTURER	MODEL NUMBER	DESCRIPTION	COMMENTS
38	A	▲	DIRECTIONAL UP LIGHT WITH 18" STAKE	AURORA LIGHTING	TELLURIDE LED: HSL16 HSL16-12-M-27-CU-60-GS-BLP	Wattage 12 WATT Optics MEDIUM 25 LED INCANDESCENT 2700K Materials COPPER Shield 60° ANGLED Mount Options G/S GROUND STAKE Finish BRONZE LIVING PATINA	U.L. LISTED FOR WET LOCATION

1611

 915 Washington Avenue
 Miami Beach, FL 33139

OWNER
LIGHTSTONE
 460 Park Avenue
 New York, NY 10022
 O: 212.616.9969

INTERIOR DESIGNER
ROCKWELLGROUP
 5 Union Square West
 New York, NY 10003
 O: 212.463.0334

LIGHTING DESIGNER
BOLD
 227 West 29th Street
 New York, NY 10001
 O: 212.674.6500

LANDSCAPE ARCHITECT
NATURALFICIAL
 Landscape Architecture + Design
 6915 Red Road Suite 224
 Coral Gables, FL 33143
 O: 305.321.2341 | Firm# LC26000548

Peter N. Anselmo
 R.L.A. FL# 6667221

KOBI KARP

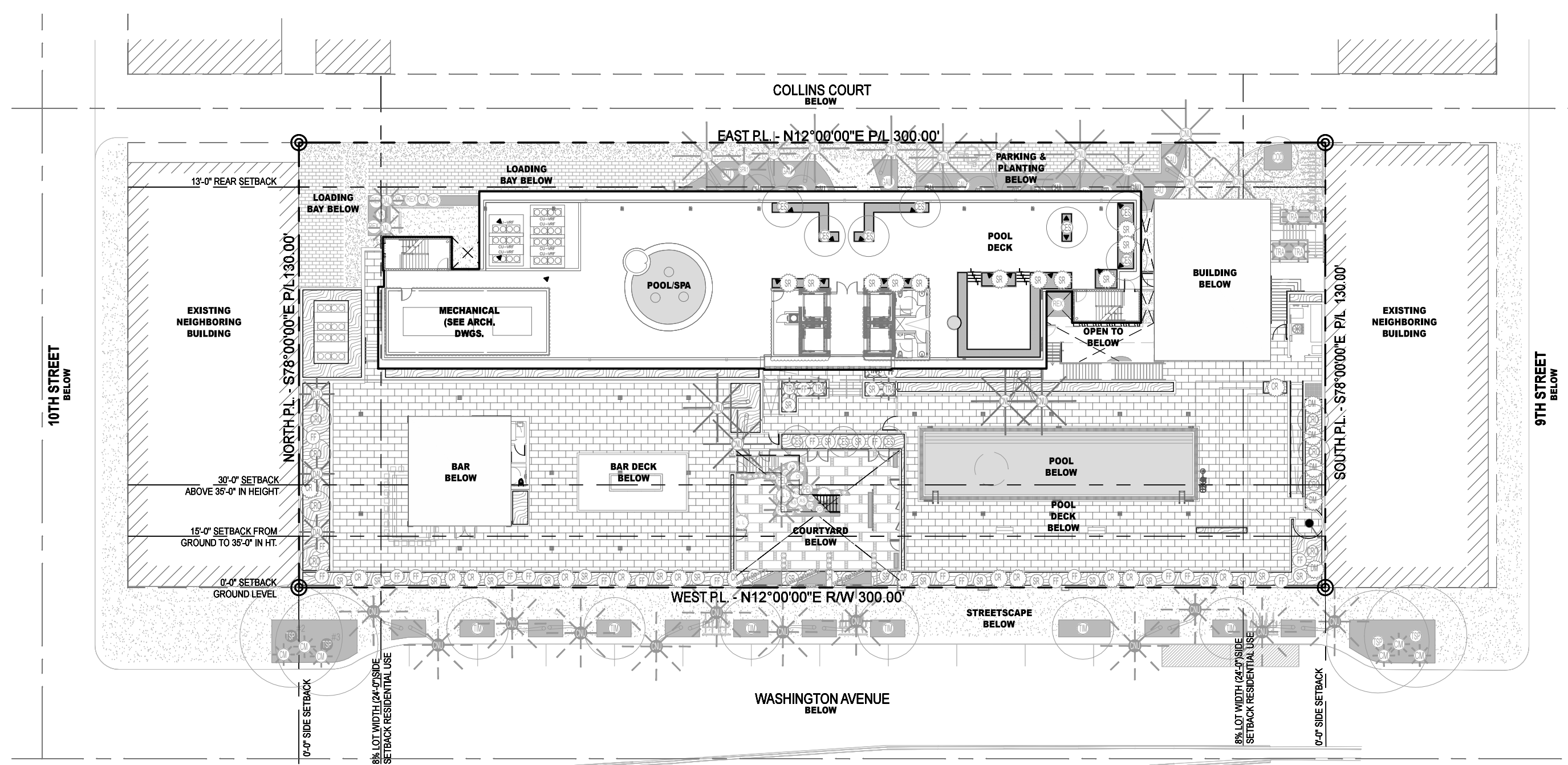
 ARCHITECTURE
 INTERIOR DESIGN
 PLANNING

2915 Biscayne Boulevard, Suite 200
 Miami, Florida 33137
 O: 305.573.1818
 F: 305.573.3766
 AIA ASID NCARB
 License #AR0012578
 WWW.KOBIKARP.COM

Historic Preservation Board Submission
LVL 2 LANDSCAPE LIGHTING PLAN
 SCALE : 1/32" = 1'-0"
 08-29-2016

 **L-4.03**

ALL DRAWINGS AND WRITTEN MATERIAL APPEARING HEREIN CONSTITUTE THE ORIGINAL AND UNPUBLISHED WORK OF KOBI KARP AIA, AND MAY NOT BE DUPLICATED, USED, OR DISCLOSED WITHOUT THE EXPRESS WRITTEN CONSENT OF KOBI KARP ARCHITECTURE & INTERIOR DESIGN, INC. AIA (P) 2016



ROOFTOP LVL LANDSCAPE LIGHTING FIXTURE SCHEDULE							
QTY	TYP	SYMBOL	APPLICATION	MANUFACTURER	MODEL NUMBER	DESCRIPTION	COMMENTS
19	A	▲	DIRECTIONAL UP LIGHT WITH 18" STAKE	AURORA LIGHTING	TELLURIDE LED: HSL16 HSL16-12-M-27-CU-60-G/S-BLP	Wattage 12 WATT Optics MEDIUM 25 LED INCANDESCENT 2700K Materials COPPER Shield 60° ANGLED Mount Options G/S GROUND STAKE Finish BRONZE LIVING PATINA	U.L. LISTED FOR WET LOCATION

1611

 915 Washington Avenue
 Miami Beach, FL 33139

OWNER
LIGHTSTONE
 460 Park Avenue
 New York, NY 10022
 O: 212.616.9969

INTERIOR DESIGNER
ROCKWELLGROUP
 5 Union Square West
 New York, NY 10003
 O: 212.463.0334

LIGHTING DESIGNER
BOLD
 227 West 29th Street
 New York, NY 10001
 O: 212.674.6500

LANDSCAPE ARCHITECT
NATURALFICIAL
 Landscape Architecture + Design
 6915 Red Road Suite 224
 Coral Gables, FL 33143
 O: 305.321.2341 | Firm# LC26000548

Peter N. Anselmo
 R.L.A. FL# 6667221

KOBI KARP

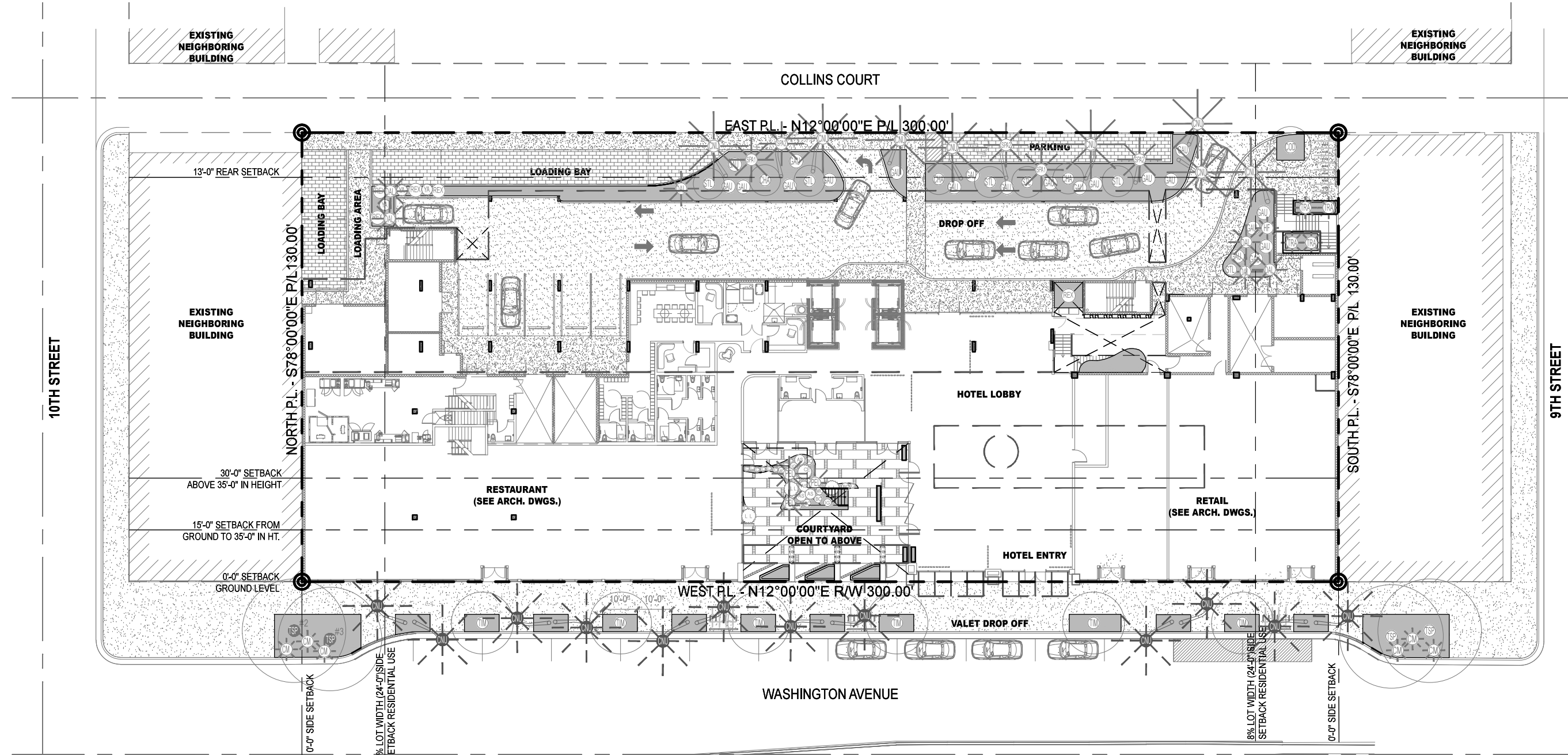
 ARCHITECTURE
 INTERIOR DESIGN
 PLANNING

2915 Biscayne Boulevard, Suite 200
 Miami, Florida 33137
 O: 305.573.1818
 F: 305.573.3766
 AIA ASID NCARB
 License #AR0012578
 WWW.KOBIKARP.COM

Historic Preservation Board Submission
ROOFTOP LVL LANDSCAPE LIGHTING PLAN
 SCALE: 1/32" = 1'-0"
 08-29-2016

 **L-4.05**

ALL DRAWINGS AND WRITTEN MATERIAL APPEARING HEREIN CONSTITUTE THE ORIGINAL AND UNPUBLISHED WORK OF KOBI KARP AIA, AND MAY NOT BE DUPLICATED, USED, OR DISCLOSED WITHOUT THE EXPRESS WRITTEN CONSENT OF KOBI KARP ARCHITECTURE & INTERIOR DESIGN, INC. AIA (P) 2016



NOTE:
IRRIGATION PLANS SHALL PROVIDE ADEQUATE IRRIGATION TO ALL PLANTING AREAS IN COMPLIANCE WITH THE CITY OF MIAMI BEACH CODE. FULL IRRIGATION PLANS TO BE DEVELOPED FOLLOWING PLANNING BOARD AND HPB APPROVALS.

1611

 915 Washington Avenue
 Miami Beach, FL 33139

OWNER
LIGHTSTONE
 460 Park Avenue
 New York, NY 10022
 O: 212.616.9969

INTERIOR DESIGNER
ROCKWELLGROUP
 5 Union Square West
 New York, NY 10003
 O: 212.463.0334

LIGHTING DESIGNER
BOLD
 227 West 29th Street
 New York, NY 10001
 O: 212.674.6500

LANDSCAPE ARCHITECT
NATURALFICIAL
 Landscape Architecture + Design
 6915 Red Road Suite 224
 Coral Gables, FL 33143
 O: 305.321.2341 | Firm# LC26000548

Peter N. Anselmo
 R.L.A. FL# 6667221

KOBI KARP

 ARCHITECTURE
 INTERIOR DESIGN
 PLANNING

2915 Biscayne Boulevard, Suite 200
 Miami, Florida 33137
 O: 305.573.1818
 F: 305.573.3766

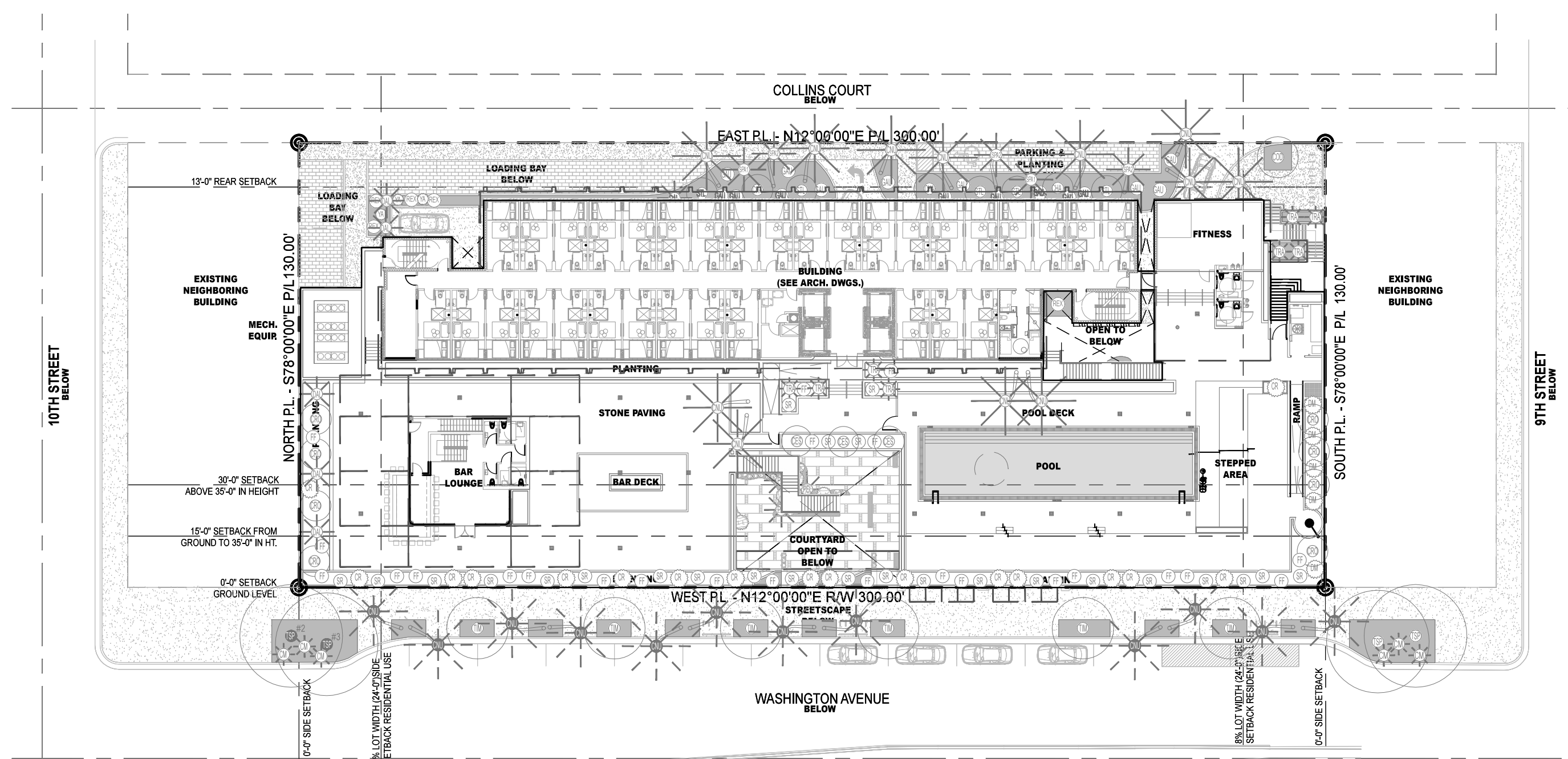
AIA ASID NCARB
 License #AR0012578
 WWW.KOBIKARP.COM

ALL DRAWINGS AND WRITTEN MATERIAL APPEARING HEREIN CONSTITUTE THE ORIGINAL AND UNPUBLISHED WORK OF KOBI KARP AIA, AND MAY NOT BE DUPLICATED, USED, OR DISCLOSED WITHOUT THE EXPRESS WRITTEN CONSENT OF KOBI KARP ARCHITECTURE & INTERIOR DESIGN, INC. AIA (© 2016)

Historic Preservation Board Submission

LVL 1 IRRIGATION PLAN
 SCALE : 1/32" = 1'-0"
 08-29-2016

 **L-5.01**



NOTE:
IRRIGATION PLANS SHALL PROVIDE ADEQUATE IRRIGATION TO ALL PLANTING AREAS IN COMPLIANCE WITH THE CITY OF MIAMI BEACH CODE. FULL IRRIGATION PLANS TO BE DEVELOPED FOLLOWING PLANNING BOARD AND HPB APPROVALS.

1611

 915 Washington Avenue
 Miami Beach, FL 33139

OWNER
LIGHTSTONE
 460 Park Avenue
 New York, NY 10022
 O: 212.616.9969

INTERIOR DESIGNER
ROCKWELLGROUP
 5 Union Square West
 New York, NY 10003
 O: 212.463.0334

LIGHTING DESIGNER
BOLD
 227 West 29th Street
 New York, NY 10001
 O: 212.674.6500

LANDSCAPE ARCHITECT
NATURALFICIAL
 Landscape Architecture + Design
 6915 Red Road Suite 224
 Coral Gables, FL 33143
 O: 305.321.2341 | Firm# LC26000548

Peter N. Anselmo
 R.L.A. FL# 6667221

KOBI KARP

 ARCHITECTURE
 INTERIOR DESIGN
 PLANNING

2915 Biscayne Boulevard, Suite 200
 Miami, Florida 33137
 O: 305.573.1818
 F: 305.573.3766

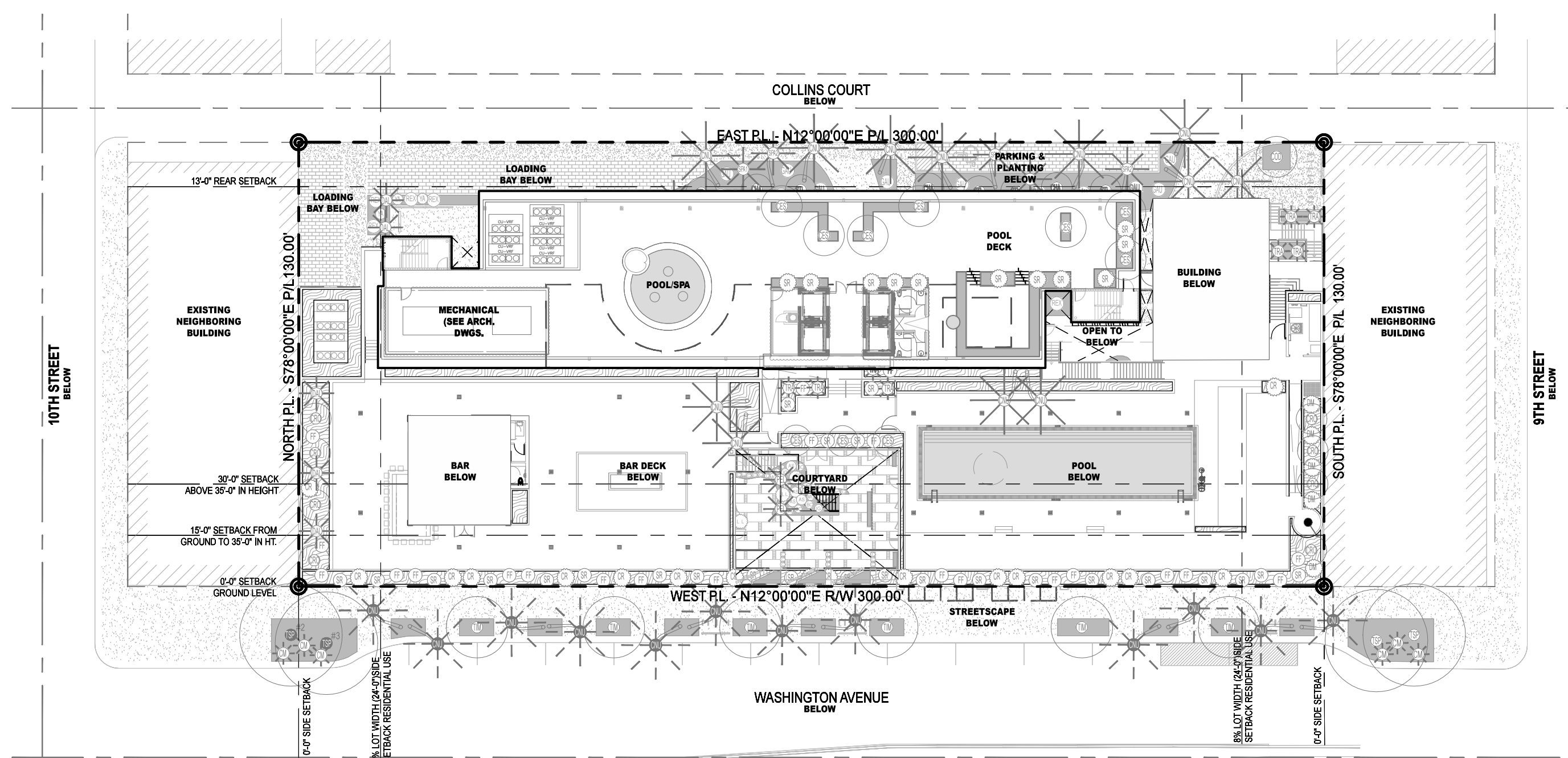
AIA ASID NCARB
 License #AR0012578
 WWW.KOBIKARP.COM

ALL DRAWINGS AND WRITTEN MATERIAL APPEARING HEREIN CONSTITUTE THE ORIGINAL AND UNPUBLISHED WORK OF KOBI KARP AIA, AND MAY NOT BE DUPLICATED, USED, OR DISCLOSED WITHOUT THE EXPRESS WRITTEN CONSENT OF KOBI KARP ARCHITECTURE & INTERIOR DESIGN, INC. AIA (P) 2016

Historic Preservation Board Submission

LVL 2 IRRIGATION PLAN
 SCALE : 1/32" = 1'-0"
 08-29-2016

L-5.03



NOTE:
IRRIGATION PLANS SHALL PROVIDE ADEQUATE IRRIGATION TO ALL PLANTING AREAS IN COMPLIANCE WITH THE CITY OF MIAMI BEACH CODE. FULL IRRIGATION PLANS TO BE DEVELOPED FOLLOWING PLANNING BOARD AND HPB APPROVALS.

1611

 915 Washington Avenue
 Miami Beach, FL 33139

OWNER
LIGHTSTONE
 460 Park Avenue
 New York, NY 10022
 O: 212.616.9969

INTERIOR DESIGNER
ROCKWELLGROUP
 5 Union Square West
 New York, NY 10003
 O: 212.463.0334

LIGHTING DESIGNER
BOLD
 227 West 29th Street
 New York, NY 10001
 O: 212.674.6500

LANDSCAPE ARCHITECT
NATURALFICIAL
 Landscape Architecture + Design
 6915 Red Road Suite 224
 Coral Gables, FL 33143
 O: 305.321.2341 | Firm# LC26000548

Peter N. Anselmo
 R.L.A. FL# 6667221

KOBI KARP

 ARCHITECTURE
 INTERIOR DESIGN
 PLANNING


2915 Biscayne Boulevard, Suite 200
 Miami, Florida 33137
 O: 305.573.1818
 F: 305.573.3766

AIA ASID NCARB
 License #AR0012578
 WWW.KOBIKARP.COM

ALL DRAWINGS AND WRITTEN MATERIAL APPEARING HEREIN CONSTITUTE THE ORIGINAL AND UNPUBLISHED WORK OF KOBI KARP AIA, AND MAY NOT BE DUPLICATED, USED, OR DISCLOSED WITHOUT THE EXPRESS WRITTEN CONSENT OF KOBI KARP ARCHITECTURE & INTERIOR DESIGN, INC. AIA (P) 2016

Historic Preservation Board Submission

ROOFTOP LVL IRRIGATION PLAN
 SCALE : 1/32" = 1'-0"
 08-29-2016

 **L-5.05**