

**SHEET INDEX**

SHEET #	SHEET TITLE	
L-0.00	EXISTING TREE SURVEY	
L-1.00	COMPOSITE SITE PLAN	
L-1.01	LVL 1 - HARDSCAPE PLAN	
L-1.02	LVL 1 - HARDSCAPE REFERENCE IMAGES	
L-1.03	LVL 2 - HARDSCAPE PLAN	
L-1.04	LVL 2 - HARDSCAPE REFERENCE IMAGES	
L-1.05	ROOFTOP LVL - HARDSCAPE PLAN	
L-3.00	TREE DISPOSITION PLAN	
L-3.01	LVL 1 - LANDSCAPE PLAN	
L-3.02	LVL 1 - PLANTING REFERENCE IMAGES	
L-3.03	LVL 2 - LANDSCAPE PLAN	
L-3.04	LVL 2 - PLANTING REFERENCE IMAGES	
L-3.05	ROOFTOP LVL - LANDSCAPE PLAN	
L-3.06	ROOFTOP LVL - PLANTING REFERENCE IMAGES	
L-3.07	GENERAL PLANTING DETAILS 01	
L-3.08	GENERAL PLANTING DETAILS 02	
L-4.01	LVL 1 - LANDSCAPE LIGHTING PLAN	
L-4.03	LVL 2 - LANDSCAPE LIGHTING PLAN	
L-4.05	ROOFTOP LVL - LANDSCAPE LIGHTING PLAN	
L-5.01	LVL 1 - IRRIGATION PLAN	
L-5.03	LVL 2 - IRRIGATION PLAN	
L-5.05	ROOFTOP LVL - IRRIGATION PLAN	

HISTORIC PRESERVATION BOARD SUBMISSION - 2016.08.29

**MOXY MIAMI TREE SURVEY LIST: 2016.07.07**

KEY #	BOTANICAL NAME	COMMON NAME	SIZE		
			HT. (FT.)	SPD. (FT.)	DBH. (IN.)
1	<i>Washingtonia robusta</i>	Washingtonia Palm	40'	20'	21.6"
2	<i>Tamarind sp.</i>	Tamarind sp.	30'	25'	17.4"
3	<i>Tamarind sp.</i>	Tamarind sp.	30'	25'	17.4"
4	<i>Cocos nucifera</i>	Coconut Palm	23'	16'	10.2"
5	<i>Cocos nucifera</i>	Coconut Palm	23'	16'	10.2"
6	<i>Cocos nucifera</i>	Coconut Palm	22'	16'	10.2"
7	<i>Cocos nucifera</i>	Coconut Palm	26'	16'	10.2"
8	<i>Cocos nucifera</i>	Coconut Palm	22'	16'	10.2"
9	<i>Cocos nucifera</i>	Coconut Palm	25'	16'	10.2"
10	<i>Cocos nucifera</i>	Coconut Palm	22'	16'	10.2"
11	<i>Cocos nucifera</i>	Coconut Palm	22'	16'	10.2"
12	<i>Cocos nucifera</i>	Coconut Palm	21'	16'	10.2"
13	<i>Cocos nucifera</i>	Coconut Palm	23'	16'	10.2"
14	<i>Cocos nucifera</i>	Coconut Palm	22'	16'	10.2"
15	<i>Cocos nucifera</i>	Coconut Palm	22'	16'	10.2"
16	<i>Cocos nucifera</i>	Coconut Palm	25'	16'	10.2"
17	<i>Cocos nucifera</i>	Coconut Palm	22'	16'	10.2"

**NOTE:**  
THIS SURVEY IS FOR REFERENCE ONLY.  
TREE SURVEY WAS NOT PERFORMED BY NFI.  
NFI NOT RESPONSIBLE FOR INACCURATE  
INFORMATION ON THE CORRESPONDING PLAN.

1611

915 Washington Avenue  
Miami Beach, FL 33139

OWNER

**LIGHTSTONE**

460 Park Avenue  
New York, NY 10022  
O: 212.616.9969

INTERIOR DESIGNER

**ROCKWELLGROUP**

5 Union Square West  
New York, NY 10003  
O: 212.463.0334

LIGHTING DESIGNER

**BOLD**

227 West 29th Street  
New York, NY 10001  
O: 212.674.6500

LANDSCAPE ARCHITECT

**NATURALFICIAL**

Landscape Architecture + Design  
6915 Red Road Suite 224  
Coral Gables, FL 33143  
O: 305.321.2341 | Firm# LC26000548

Peter N. Anselmo  
R.L.A. FL# 6667221

**KOBI KARP**

ARCHITECTURE  
INTERIOR DESIGN  
PLANNING

2915 Biscayne Boulevard, Suite 200  
Miami, Florida 33137  
O: 305.573.1818  
F: 305.573.3766

AIA ASID NCARB  
License #AR0012578  
WWW.KOBIKARP.COM

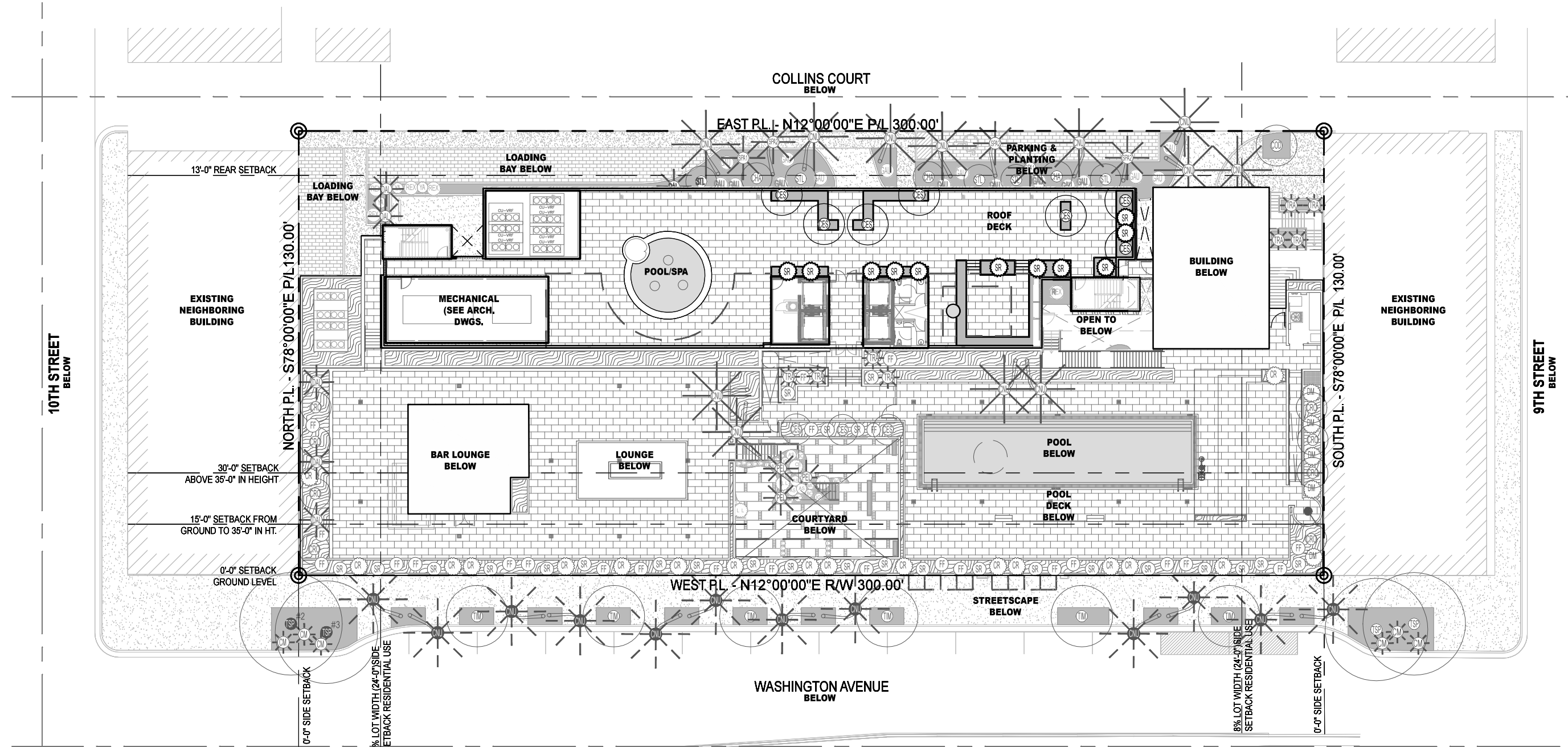
Historic Preservation Board Submission

**EXISTING TREE SURVEY**

SCALE : 1/32" = 1'-0"  
08-29-2016

**L-0.00**

ALL DRAWINGS AND WRITTEN MATERIAL APPEARING HEREIN CONSTITUTE THE ORIGINAL AND UNPUBLISHED WORK OF KOBI KARP AIA, AND MAY NOT BE DUPLICATED, USED, OR DISCLOSED WITHOUT THE EXPRESS WRITTEN CONSENT OF KOBI KARP ARCHITECTURE & INTERIOR DESIGN, INC. AIA (P) 2016



1611  
  
 915 Washington Avenue  
 Miami Beach, FL 33139

OWNER  
**LIGHTSTONE**  
 460 Park Avenue  
 New York, NY 10022  
 O: 212.616.9969

INTERIOR DESIGNER  
**ROCKWELLGROUP**  
 5 Union Square West  
 New York, NY 10003  
 O: 212.463.0334

LIGHTING DESIGNER  
**BOLD**  
 227 West 29th Street  
 New York, NY 10001  
 O: 212.674.6500

LANDSCAPE ARCHITECT  
**NATURALFICIAL**  
 Landscape Architecture + Design  
 6915 Red Road Suite 224  
 Coral Gables, FL 33143  
 O: 305.321.2341 | Firm# LC26000548

Peter N. Anselmo  
 R.L.A. FL# 6667221

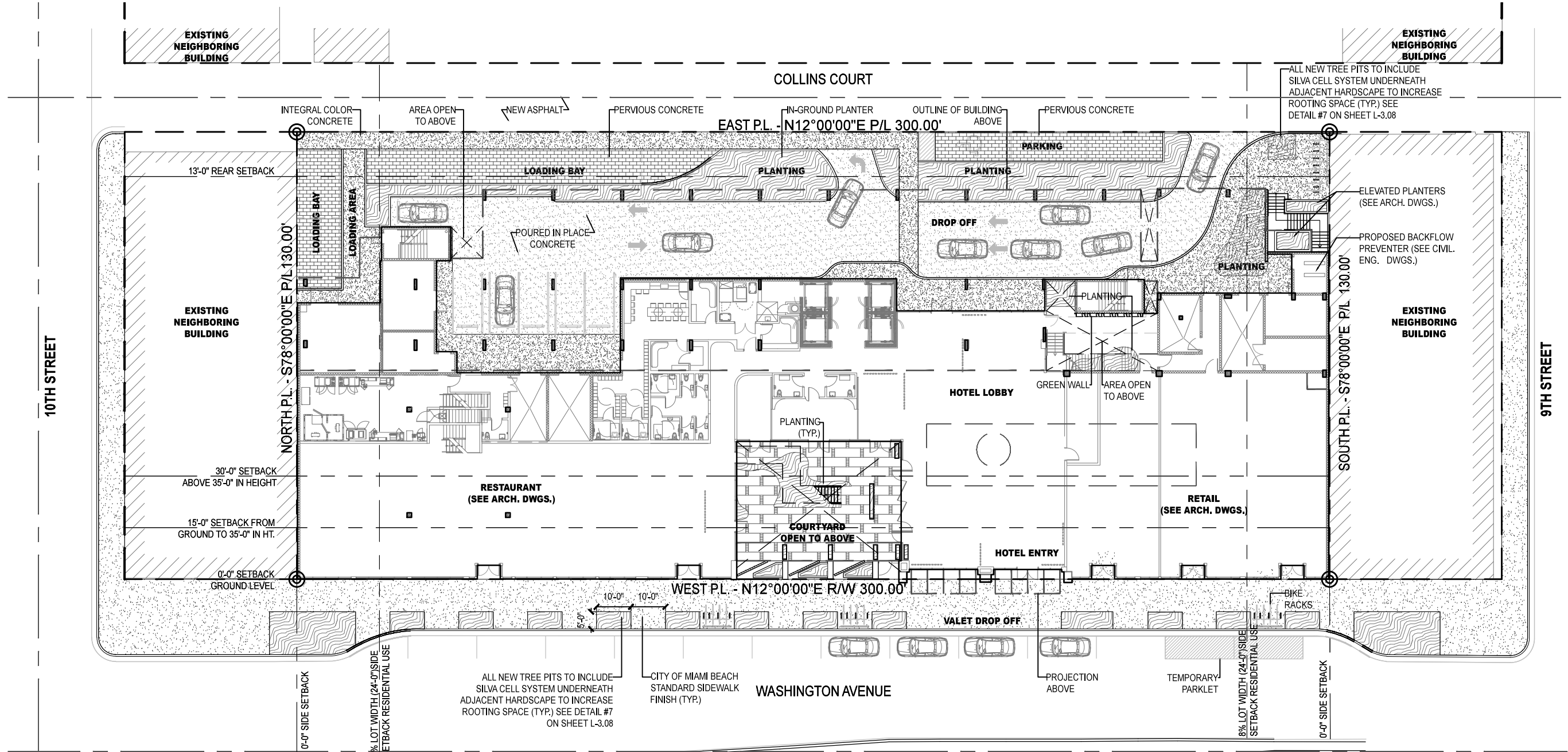
**KOBI KARP**  
  
 ARCHITECTURE  
 INTERIOR DESIGN  
 PLANNING

2915 Biscayne Boulevard, Suite 200  
 Miami, Florida 33137  
 O: 305.573.1818  
 F: 305.573.3766  
 AIA ASID NCARB  
 License #AR0012578  
 WWW.KOBIKARP.COM

Historic Preservation Board Submission  
**COMPOSITE SITE PLAN**  
 SCALE: 1/32" = 1'-0"  
 08-29-2016

**L-1.00**

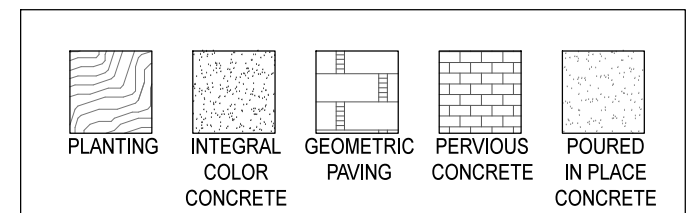
ALL DRAWINGS AND WRITTEN MATERIAL APPEARING HEREIN CONSTITUTE THE ORIGINAL AND UNPUBLISHED WORK OF KOBI KARP AIA, AND MAY NOT BE DUPLICATED, USED, OR DISCLOSED WITHOUT THE EXPRESS WRITTEN CONSENT OF KOBI KARP ARCHITECTURE & INTERIOR DESIGN, INC. AIA (P) 2016



**GENERAL SITE NOTES**

- GENERAL CONTRACTOR, SUBCONTRACTORS, AND INSTALLERS SHALL CROSS REFERENCE ARCH. DWGS., ENGINEERING DWGS., AND LANDSCAPE DWGS., THROUGHOUT THE IMPLEMENTATION TO ENSURE THE DESIGN INTENT IS MET. ANY DISCREPANCIES SHALL BE NOTED AND BROUGHT TO THE GENERAL CONTRACTOR'S ATTENTION.
- SEE CIVIL AND ARCHITECTURE DRAWINGS FOR F.F.E & SURFACE DRAINAGE
- SEE MEP AND CIVIL DRAWINGS FOR IRRIGATION CONNECTIONS.
- SEE STRUCT. ENG. DRAWINGS FOR STRUCTURAL COMPONENTS.
- SEE ELECTRICAL ENG. DRAWINGS FOR LANDSCAPE LIGHTING WIRING.
- ALL WORK, MATERIALS, AND EQUIPMENT UTILIZED IN THIS PROJECT SHALL BE INSTALLED IN STRICT ACCORDANCE WITH THE GOVERNING ZONING & BUILDING CODE, MANUFACTURER'S RECOMMENDATIONS, AND SPECIFICATIONS.
- CONTRACTOR SHALL BE RESPONSIBLE FOR VISITING SITE PRIOR TO BIDDING IN ORDER TO FAMILIARIZE THEMSELVES WITH ALL EXISTING CONDITIONS AFFECTING THE WORK, INCLUDING BUT NOT LIMITED TO PRIVATE AND PUBLIC UTILITIES, ON AND OFF SITE, ACCESS ROADS, AND OTHER SUPPORT FACILITIES.
- CONTRACTOR MUST NOTIFY LANDSCAPE ARCHITECT IMMEDIATELY OF ANY UNEXPECTED OR UNKNOWN CONDITIONS OR DISCREPANCIES IN THE DRAWINGS AND CONTRACT DOCUMENTS, AS WELL AS ANY ERRORS OR OMISSIONS ON THE DRAWINGS PRIOR TO PROCEEDING WITH THE WORK OR SHOP FABRICATION.
- CONTRACTOR SHALL PREPARE AND MAINTAIN ALL CONSTRUCTION AREAS, AS WELL AS SURROUNDING AREAS FREE OF DEBRIS OR HAZARDOUS EQUIPMENT AT ALL TIMES.

**GRAPHIC LEGEND**



**SCOPE OF WORK**

● HARDSCAPE, LANDSCAPE, IRRIGATION, AND LANDSCAPE LIGHTING.

1611  
**moxy**  
HOTELS  
915 Washington Avenue  
Miami Beach, FL 33139

OWNER  
**LIGHTSTONE**  
460 Park Avenue  
New York, NY 10022  
O: 212.616.9969

INTERIOR DESIGNER  
**ROCKWELLGROUP**  
5 Union Square West  
New York, NY 10003  
O: 212.463.0334

LIGHTING DESIGNER  
**BOLD**  
227 West 29th Street  
New York, NY 10001  
O: 212.674.6500

LANDSCAPE ARCHITECT  
**NATURALFICIAL**  
Landscape Architecture + Design  
6915 Red Road Suite 224  
Coral Gables, FL 33143  
O: 305.321.2341 | Firm# LC26000548

Peter N. Anselmo  
R.L.A. FL# 6667221

**KOBI KARP**  
**ARCHITECTURE**  
INTERIOR DESIGN  
PLANNING

2915 Biscayne Boulevard, Suite 200  
Miami, Florida 33137  
O: 305.573.1818  
F: 305.573.3766

AIA ASID NCARB  
License #AR0012578  
WWW.KOBIKARP.COM

Historic Preservation Board Submission

**LVL 1 HARDSCAPE PLAN**

SCALE : 1/32" = 1'-0"  
08-29-2016

**L-1.01**

ALL DRAWINGS AND WRITTEN MATERIAL APPEARING HEREIN CONSTITUTE THE ORIGINAL AND UNPUBLISHED WORK OF KOBI KARP AIA, AND MAY NOT BE DUPLICATED, USED, OR DISCLOSED WITHOUT THE EXPRESS WRITTEN CONSENT OF KOBI KARP ARCHITECTURE & INTERIOR DESIGN, INC. 04.10.2016



01 | Streetscape Paving



02 | Streetscape Tree Pits



03 | Streetscape Tree Pits



04 | Streetscape Parklet



05 | Streetscape Parklet



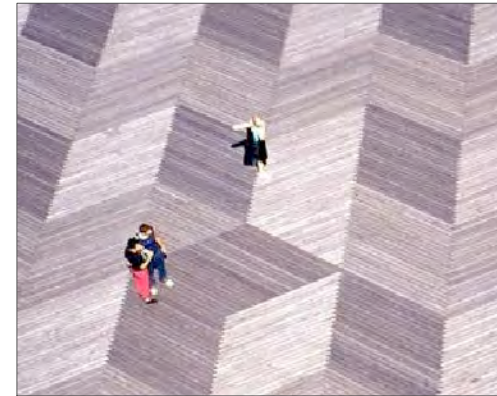
06 | Dropoff Paving



07 | Loading & Parking Pervious Concrete



08 | Loading & Parking Pervious Concrete



09 | Courtyard Paving Design



10 | Courtyard Paving Design



11 | Courtyard Planting



12 | Courtyard Tree pits



13 | Courtyard Potted Plants



14 | Courtyard Cascading Vine



15 | Courtyard Cascading Vine

1611  
**moxy**  
HOTELS  
915 Washington Avenue  
Miami Beach, FL 33139

OWNER  
**LIGHTSTONE**  
460 Park Avenue  
New York, NY 10022  
O: 212.616.9969

INTERIOR DESIGNER  
**ROCKWELLGROUP**  
5 Union Square West  
New York, NY 10003  
O: 212.463.0334

LIGHTING DESIGNER  
**BOLD**  
227 West 29th Street  
New York, NY 10001  
O: 212.674.6500

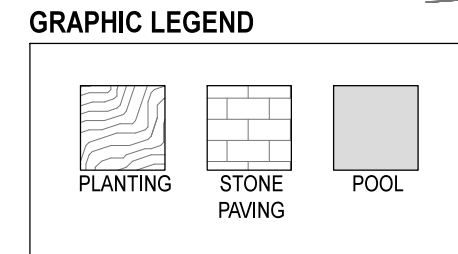
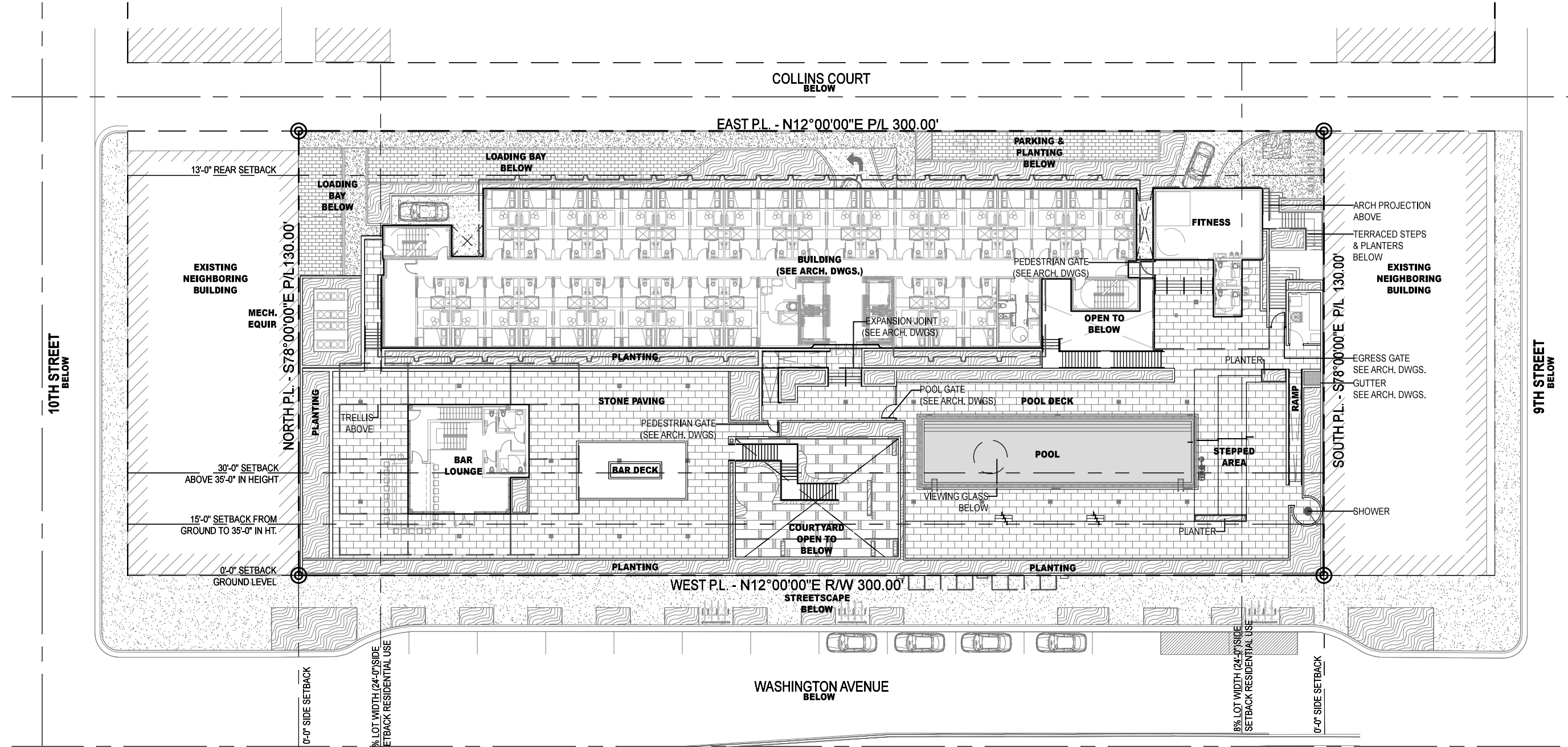
LANDSCAPE ARCHITECT  
**NATURALFICIAL**  
Landscape Architecture + Design  
6915 Red Road Suite 224  
Coral Gables, FL 33143  
O: 305.321.2341 | Firm# LC26000548

Peter N. Anselmo  
R.L.A. FL# 6667221

**KOBI KARP**  
**ARCHITECTURE**  
INTERIOR DESIGN  
PLANNING  
2915 Biscayne Boulevard, Suite 200  
Miami, Florida 33137  
O: 305.573.1818  
F: 305.573.3766  
AIA ASID NCARB  
License #AR0012578  
WWW.KOBIKARP.COM

Historic Preservation Board Submission  
**LVL 1 HARDSCAPE**  
**REFERENCE IMAGES**  
SCALE: N.T.S.  
08-29-2016

**L-1.02**



1611  
  
 915 Washington Avenue  
 Miami Beach, FL 33139

OWNER  
**LIGHTSTONE**  
 460 Park Avenue  
 New York, NY 10022  
 O: 212.616.9969

INTERIOR DESIGNER  
**ROCKWELLGROUP**  
 5 Union Square West  
 New York, NY 10003  
 O: 212.463.0334

LIGHTING DESIGNER  
**BOLD**  
 227 West 29th Street  
 New York, NY 10001  
 O: 212.674.6500

LANDSCAPE ARCHITECT  
**NATURALFICIAL**  
 Landscape Architecture + Design  
 6915 Red Road Suite 224  
 Coral Gables, FL 33143  
 O: 305.321.2341 | Firm# LC26000548

Peter N. Anselmo  
 R.L.A. FL# 6667221

**KOBI KARP**  
  
 ARCHITECTURE  
 INTERIOR DESIGN  
 PLANNING

2915 Biscayne Boulevard, Suite 200  
 Miami, Florida 33137  
 O: 305.573.1818  
 F: 305.573.3766  
 AIA ASID NCARB  
 License #AR0012578  
 WWW.KOBIKARP.COM

Historic Preservation Board Submission  
**LVL 2 HARDSCAPE PLAN**  
 SCALE : 1/32" = 1'-0"  
 08-29-2016

**L-1.03**

ALL DRAWINGS AND WRITTEN MATERIAL APPEARING HEREIN CONSTITUTE THE ORIGINAL AND UNPUBLISHED WORK OF KOBI KARP AIA, AND MAY NOT BE DUPLICATED, USED, OR DISCLOSED WITHOUT THE EXPRESS WRITTEN CONSENT OF KOBI KARP ARCHITECTURE & INTERIOR DESIGN, INC. AIA (P) 2016



01 | Pool Deck



02 | Pool Deck



03 | Pool Deck Planters



04 | Pool Deck Planters



915 Washington Avenue  
Miami Beach, FL 33139

OWNER  
**LIGHTSTONE**

460 Park Avenue  
New York, NY 10022  
O: 212.616.9969

INTERIOR DESIGNER  
**ROCKWELLGROUP**

5 Union Square West  
New York, NY 10003  
O: 212.463.0334

LIGHTING DESIGNER  
**BOLD**

227 West 29th Street  
New York, NY 10001  
O: 212.674.6500

LANDSCAPE ARCHITECT  
**NATURALFICIAL**

Landscape Architecture + Design  
6915 Red Road Suite 224  
Coral Gables, FL 33143  
O: 305.321.2341 | Firm# LC26000548

Peter N. Anselmo  
R.L.A. FL# 6667221

**KOBI KARP**  
  
ARCHITECTURE  
INTERIOR DESIGN  
P L A N N I N G

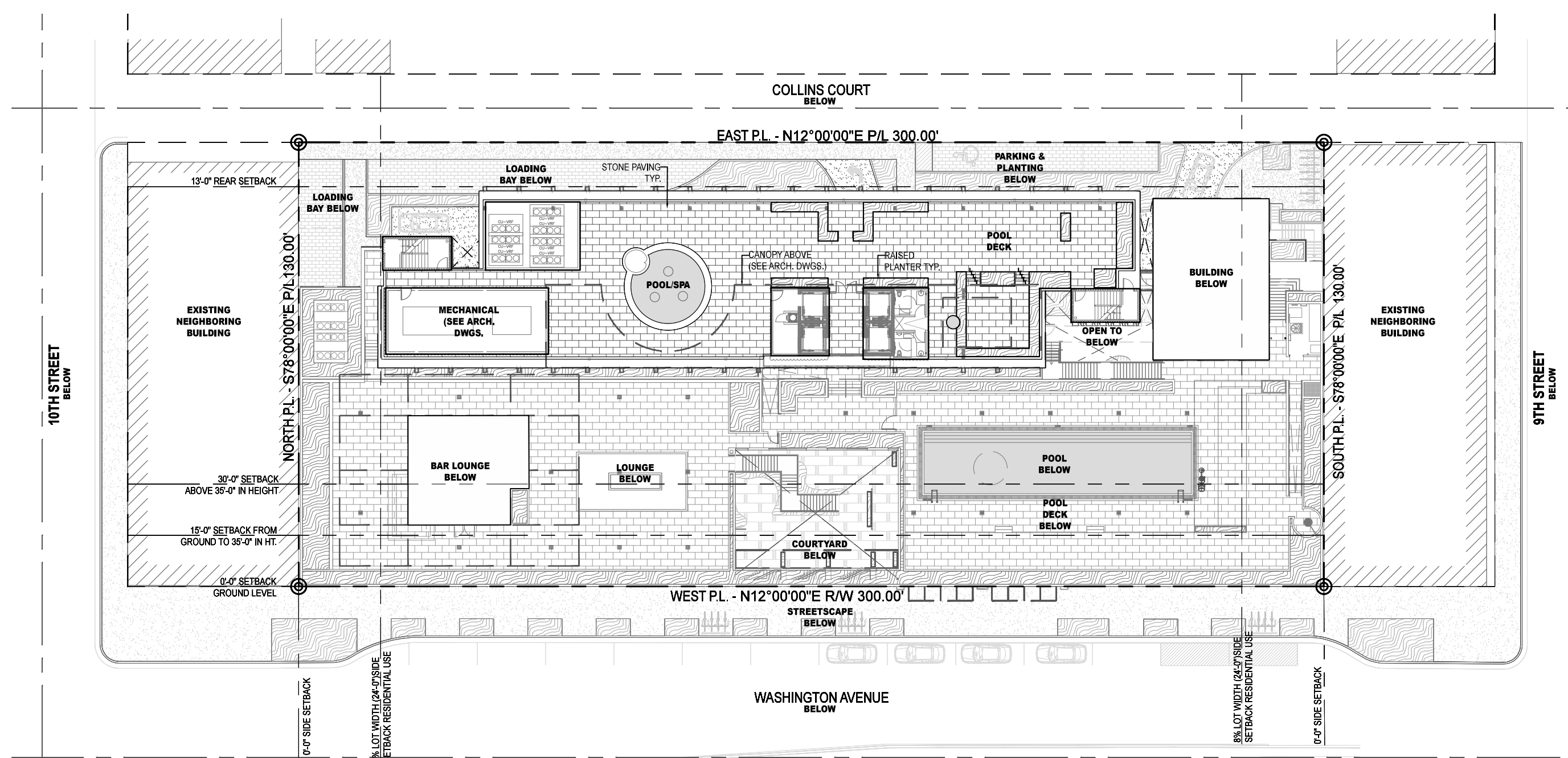
2915 Biscayne Boulevard, Suite 200  
Miami, Florida 33137  
O: 305.573.1818  
F: 305.573.3766

AIA ASID NCARB  
License #AR0012578  
WWW.KOBIKARP.COM

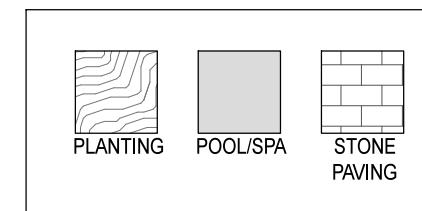
ALL DRAWINGS AND WRITTEN MATERIAL APPEARING HEREIN CONSTITUTE THE ORIGINAL AND UNPUBLISHED WORK OF KOBI KARP AIA, AND MAY NOT BE DUPLICATED, USED, OR DISCLOSED WITHOUT THE EXPRESS WRITTEN CONSENT OF KOBI KARP ARCHITECTURE & INTERIOR DESIGN, INC. AIA (P) 2016

Historic Preservation Board Submission  
**LVL 2 HARDSCAPE  
REFERENCE IMAGES**  
SCALE: N.T.S.  
08-29-2016

**L-1.04**



**GRAPHIC LEGEND**



1611  
  
 915 Washington Avenue  
 Miami Beach, FL 33139

OWNER  
**LIGHTSTONE**  
 460 Park Avenue  
 New York, NY 10022  
 O: 212.616.9969

INTERIOR DESIGNER  
**ROCKWELLGROUP**  
 5 Union Square West  
 New York, NY 10003  
 O: 212.463.0334

LIGHTING DESIGNER  
**BOLD**  
 227 West 29th Street  
 New York, NY 10001  
 O: 212.674.6500

LANDSCAPE ARCHITECT  
**NATURALFICIAL**  
 Landscape Architecture + Design  
 6915 Red Road Suite 224  
 Coral Gables, FL 33143  
 O: 305.321.2341 | Firm# LC26000548

Peter N. Anselmo  
 R.L.A. FL# 6667221

**KOBI KARP**  
  
 ARCHITECTURE  
 INTERIOR DESIGN  
 PLANNING

2915 Biscayne Boulevard, Suite 200  
 Miami, Florida 33137  
 O: 305.573.1818  
 F: 305.573.3766

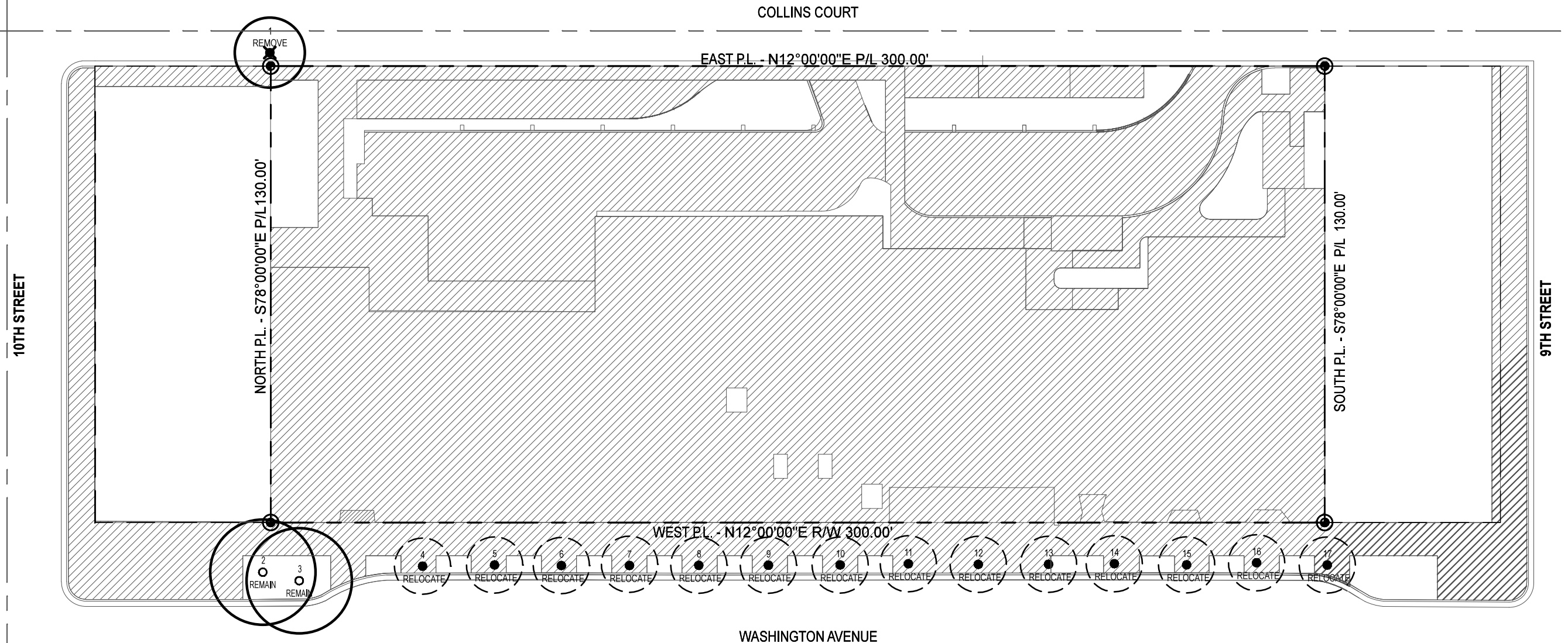
AIA ASID NCARB  
 License #AR0012578  
 WWW.KOBIKARP.COM

ALL DRAWINGS AND WRITTEN MATERIAL APPEARING HEREIN CONSTITUTE THE ORIGINAL AND UNPUBLISHED WORK OF KOBI KARP AIA, AND MAY NOT BE DUPLICATED, USED, OR DISCLOSED WITHOUT THE EXPRESS WRITTEN CONSENT OF KOBI KARP ARCHITECTURE & INTERIOR DESIGN, INC. AIA (P) 2016

Historic Preservation Board Submission

**ROOFTOP LVL HARDSCAPE PLAN**  
 SCALE : 1/32" = 1'-0"  
 08-29-2016

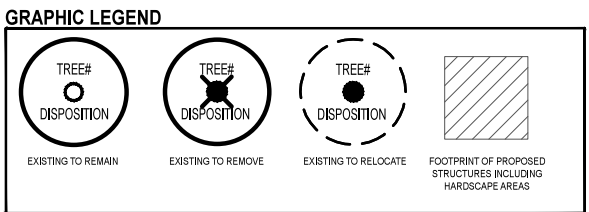
**L-1.05**



**MOXY MIAMI TREE DISPOSITION LIST: 2016.07.07**

KEY #	BOTANICAL NAME	COMMON NAME	SIZE			DISPOSITION			NOTES
			HT. (FT.)	SPD. (FT.)	DBH (IN.)	REMAIN	REMOVE	RELOCATE ON SITE	
1	<i>Washingtonia robusta</i>	Washingtonia Palm	40'	20'	21.6"		X		Invasive
2	<i>Tamarind sp.</i>	Tamarind sp.	30'	25'	17.4"	X			
3	<i>Tamarind sp.</i>	Tamarind sp.	30'	25'	17.4"	X			
4	<i>Cocos nucifera</i>	Coconut Palm	23'	16'	10.2"			X	Design Conflict
5	<i>Cocos nucifera</i>	Coconut Palm	23'	16'	10.2"			X	Design Conflict
6	<i>Cocos nucifera</i>	Coconut Palm	22'	16'	10.2"			X	Design Conflict
7	<i>Cocos nucifera</i>	Coconut Palm	26'	16'	10.2"			X	Design Conflict
8	<i>Cocos nucifera</i>	Coconut Palm	22'	16'	10.2"			X	Design Conflict
9	<i>Cocos nucifera</i>	Coconut Palm	25'	16'	10.2"			X	Design Conflict
10	<i>Cocos nucifera</i>	Coconut Palm	22'	16'	10.2"			X	Design Conflict
11	<i>Cocos nucifera</i>	Coconut Palm	22'	16'	10.2"			X	Design Conflict
12	<i>Cocos nucifera</i>	Coconut Palm	21'	16'	10.2"			X	Design Conflict
13	<i>Cocos nucifera</i>	Coconut Palm	23'	16'	10.2"			X	Design Conflict
14	<i>Cocos nucifera</i>	Coconut Palm	22'	16'	10.2"			X	Design Conflict
15	<i>Cocos nucifera</i>	Coconut Palm	22'	16'	10.2"			X	Design Conflict
16	<i>Cocos nucifera</i>	Coconut Palm	25'	16'	10.2"			X	Design Conflict
17	<i>Cocos nucifera</i>	Coconut Palm	22'	16'	10.2"			X	Design Conflict

**SUMMARY**  
 Total Number of Trees / Palms to Remain in R.O.W.: 2  
 Total Number of Trees / Palms to Relocate in R.O.W.: 14  
 Total Number of Trees / Palms to Remove: 1



1611  
  
 915 Washington Avenue  
 Miami Beach, FL 33139

OWNER  
**LIGHTSTONE**  
 460 Park Avenue  
 New York, NY 10022  
 O: 212.616.9969

INTERIOR DESIGNER  
**ROCKWELLGROUP**  
 5 Union Square West  
 New York, NY 10003  
 O: 212.463.0334

LIGHTING DESIGNER  
**BOLD**  
 227 West 29th Street  
 New York, NY 10001  
 O: 212.674.6500

LANDSCAPE ARCHITECT  
**NATURALFICIAL**  
 Landscape Architecture + Design  
 6915 Red Road Suite 224  
 Coral Gables, FL 33143  
 O: 305.321.2341 | Firm# LC26000548

Peter N. Anselmo  
 R.L.A. FL# 6667221

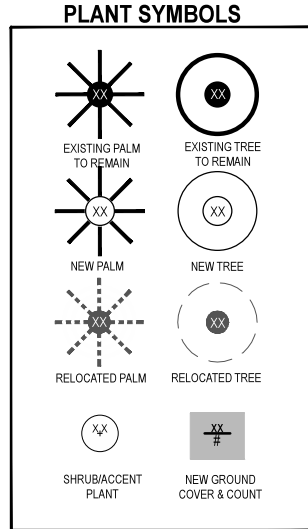
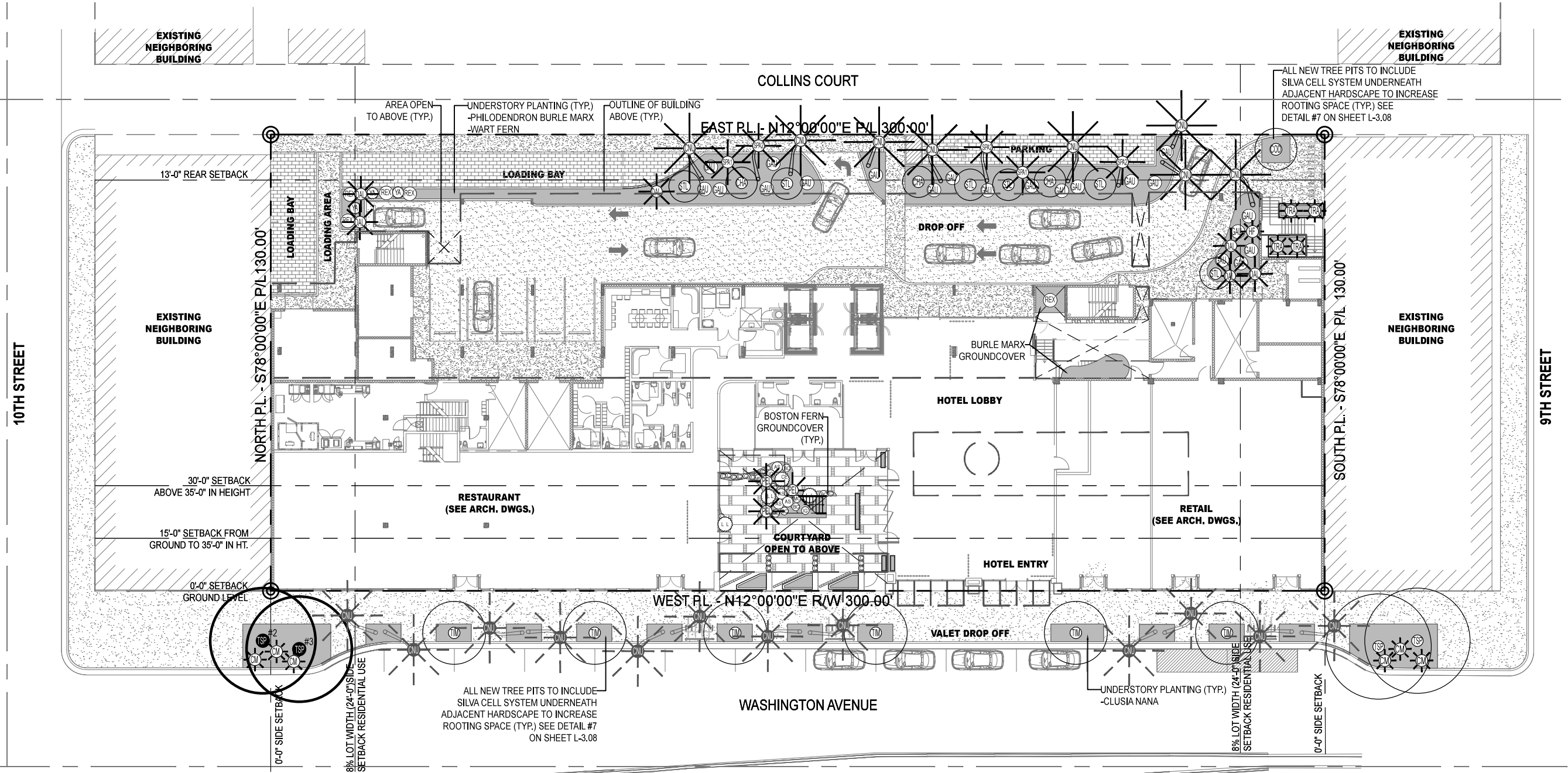
**KOBI KARP**  
  
 ARCHITECTURE  
 INTERIOR DESIGN  
 PLANNING

2915 Biscayne Boulevard, Suite 200  
 Miami, Florida 33137  
 O: 305.573.1818  
 F: 305.573.3766  
 AIA ASID NCARB  
 License #AR0012578  
 WWW.KOBIKARP.COM

Historic Preservation Board Submission  
**TREE DISPOSITION PLAN**  
 SCALE : 1/32" = 1'-0"  
 08-29-2016  
**L-3.00**

ALL DRAWINGS AND WRITTEN MATERIAL APPEARING HEREIN CONSTITUTE THE ORIGINAL AND UNPUBLISHED WORK OF KOBI KARP AIA, AND MAY NOT BE DUPLICATED, USED, OR DISCLOSED WITHOUT THE EXPRESS WRITTEN CONSENT OF KOBI KARP ARCHITECTURE & INTERIOR DESIGN, INC. AIA (P) 2016.





NFI MOXY MIAMI PLANT LIST: LVL 1 - 2016.08.29

QTY	ABRV.	BOTANICAL NAME	COMMON NAME	SPECIFICATIONS	FL. NATIVE		DROUGHT TOLERANT	
					YES	NO	YES	NO
<b>TREES</b>								
3	CHA	<i>Calliandra haematocephala</i>	Dwarf Powder Puff Bush	T.B.D.		X	X	
1	COD	<i>Cananga odorata</i>	Ylang Ylang	25G		X		X
6	STL	<i>Stemmadenia littoralis</i>	Milkyway Tree	T.B.D.	X		X	
6	TIM	<i>Tabebuia impetiginosa</i>	Pink Trumpet Tree	Collected specimen	X	X		
2	TSP	Tamandsp. sp.	Tamandsp. sp.	Match Existing	X		X	
<b>PALMS</b>								
8	CNU	<i>Cocos nucifera</i>	Coconut Palm	30'-35' Stag. Ht's		X	X	
6	DAL	<i>Dicydosperma album</i>	Hurricane Palm	10' ht.		X	X	
1	HF	<i>Howea forsteriana</i>	Kentia Palm	T.B.D.		X		X
3	SPA1	<i>Sabal palmetto</i>	Sabal Palm (hooked trunk)	15' ht.	X		X	
2	SPA2	<i>Sabal palmetto</i>	Sabal Palm (crooked trunk)	3/800-29' M., 4/825-30'	X		X	
3	TRA	<i>Thrinax radiata</i>	Florida Thatch Palm	20'-25' ht.	X		X	
4	VM	<i>Veitchia montgomeryana</i>	Montgomery Palm	30'-35' ht's		X	X	
<b>SHRUBS</b>								
21	GAU	<i>Gardenia augusta</i>	Cape Jasmine	8-10' HT		X		X
5	REX	<i>Rhapis excelsa</i>	Lady Palm	T.B.D.		X	X	X
3	YA	<i>Yucca alopecuroides</i>	Spanish Bayonet	T.B.D.	X		X	X

NFI MOXY MIAMI PLANT LIST: LVL 1 - 2016.08.29

ACCENTS		COMMON NAME		T.B.D.		X		X	
22	G	<i>Calathea zebrina</i>	Zebra Plant	T.B.D.			X	X	X
8	CM	<i>Coccothrinax miraguama</i>	Miraguama Palm	T.B.D.		X		X	
3	MO	<i>Monstera obliqua</i>	Swiss Cheese Plant	T.B.D.			X	X	X
2	IG	<i>Philodendron imperial green</i>	Same	T.B.D.		X	X		
4	AS	<i>Anthurium salvinii</i>	Birdnest Anthurium	T.B.D.		X	X		
5	BC	<i>Philodendron black cardinal</i>	Same	T.B.D.		X	X		
1	CE	<i>Cnemaecoxia elegans</i>	Parlor Palm	T.B.D.		X	X	X	
3	LL	<i>Licuala (auterbachii)</i>	Licuala Palm	T.B.D.		X	X	X	
GROUNDCOVERS		COMMON NAME		T.B.D.		X		X	
T.B.D.	CN	<i>Clusia nana</i>	Dwarf Clusia	T.B.D.		X		X	
T.B.D.	MS	<i>Microsorium scolopendrium</i>	Wart Fern	T.B.D.		X		X	
T.B.D.	NE	<i>Nepenthes exaltata (Bostonensis)</i>	Boston Fern	T.B.D.			X	X	
T.B.D.	BM	<i>Philodendron burle marx</i>	Same	T.B.D.			X	X	X

EXISTING TREES & DISPOSITION (Refer to Tree Disposition List on L-3.00 for sizes & specs)

KEY#	ABRV.	BOTANICAL NAME	COMMON NAME	DISPOSITION
2	TSP	Tamandsp. sp.	Tamandsp. sp.	Remain
3	TSP	Tamandsp. sp.	Tamandsp. sp.	Remain
4	CNU	<i>Cocos nucifera</i>	Coconut Palm	Relocate
5	CNU	<i>Cocos nucifera</i>	Coconut Palm	Relocate
6	CNU	<i>Cocos nucifera</i>	Coconut Palm	Relocate
7	CNU	<i>Cocos nucifera</i>	Coconut Palm	Relocate
8	CNU	<i>Cocos nucifera</i>	Coconut Palm	Relocate
9	CNU	<i>Cocos nucifera</i>	Coconut Palm	Relocate
10	CNU	<i>Cocos nucifera</i>	Coconut Palm	Relocate
11	CNU	<i>Cocos nucifera</i>	Coconut Palm	Relocate
12	CNU	<i>Cocos nucifera</i>	Coconut Palm	Relocate

KEY#	ABRV.	BOTANICAL NAME	COMMON NAME	DISPOSITION
13	CNU	<i>Cocos nucifera</i>	Coconut Palm	Relocate
14	CNU	<i>Cocos nucifera</i>	Coconut Palm	Relocate
15	CNU	<i>Cocos nucifera</i>	Coconut Palm	Relocate
16	CNU	<i>Cocos nucifera</i>	Coconut Palm	Relocate
17	CNU	<i>Cocos nucifera</i>	Coconut Palm	Relocate

**NOTE:** DETERMINATIONS OF WHICH RELOCATED COCONUT PALMS WILL BE INSTALLED IN EACH PROPOSED TREE PIT TO BE COORDINATED. ALL RELOCATED COCONUT PALMS TO BE UTILIZED IN THIS STREETScape.

<p>1611</p> <p>915 Washington Avenue Miami Beach, FL 33139</p>	<p>OWNER</p> <p><b>LIGHTSTONE</b></p> <p>460 Park Avenue New York, NY 10022 O: 212.616.9969</p>	<p>INTERIOR DESIGNER</p> <p><b>ROCKWELLGROUP</b></p> <p>5 Union Square West New York, NY 10003 O: 212.463.0334</p>	<p>LIGHTING DESIGNER</p> <p><b>BOLD</b></p> <p>227 West 29th Street New York, NY 10001 O: 212.674.6500</p>	<p>LANDSCAPE ARCHITECT</p> <p><b>NATURALFICIAL</b></p> <p>Landscape Architecture + Design 6915 Red Road Suite 224 Coral Gables, FL 33143 O: 305.321.2341   Firm# LC26000548</p>	<p><b>KOBI KARP</b></p> <p>ARCHITECTURE INTERIOR DESIGN PLANNING</p> <p>Peter N. Anselmo R.L.A. FL# 6667221</p>	<p>2915 Biscayne Boulevard, Suite 200 Miami, Florida 33137 O: 305.573.1818 F: 305.573.3766</p> <p>AIA ASID NCARB License #AR0012578 WWW.KOBIKARP.COM</p>	<p>Historic Preservation Board Submission</p> <p><b>LVL 1 LANDSCAPE PLAN</b></p> <p>SCALE : 1/32" = 1'-0"</p> <p>08-29-2016</p> <p><b>L-3.01</b></p>
--	---	--	--	---	---	--	--

ALL DRAWINGS AND WRITTEN MATERIAL APPEARING HEREIN CONSTITUTE THE ORIGINAL AND UNPUBLISHED WORK OF KOBI KARP AND MAY NOT BE REPRODUCED, COPIED, OR DISCLOSED WITHOUT THE EXPRESS WRITTEN CONSENT OF KOBI KARP ARCHITECTURE & INTERIOR DESIGN, INC. (K) 2016



*Calliandra haematocephala*  
(CHA) Dwarf Powder Puff



*Cananga odorata*  
(COD) Ylang Ylang



*Stemmadenia littoralis*  
(STL) Milkyway Tree



*Tabebuia impetiginosa*  
(TIM) Pink Trumpet Tree



*Tamarind sp.*  
(TSP) Tamarind sp.



*Cocos nucifera*  
(CNU) Coconut Palm



*Dictyosperma album*  
(DAL) Hurricane Palm



*Howea forsteriana*  
(HF) Kentia Palm



*Ptychosperma elegans*  
(PEL) Solitaire Palm



*Sabal palmetto*  
(SPA1) Booted Sabal



*Sabal palmetto*  
(SPA2) Crooked Sabal



*Thrinax radiata*  
(TRA) Florida Thatch Palm



*Gardenia augusta*  
(GAU) Cape Jasmine



*Rhapsis exceisa*  
(REX) Lady Palm



*Yucca aloifolia*  
(YA) Spanish Bayonet



*Calathea zebrina*  
(C) Zebra Plant



*Coccothrinax miraguama*  
(CM) Mirguama Palm



*Monstera oblique*  
(MO) Swiss Cheese Plant



*Philoden. Imperial Green*  
(IG)



*Anthurium salvinii*  
(AS) Birdsnest Anthuriium



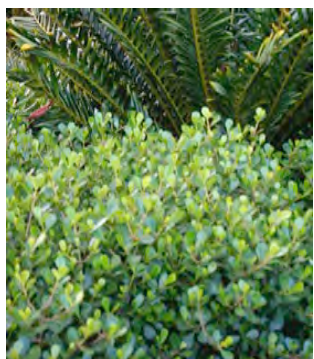
*Philoden. Black Cardinal*  
(BC)



*Chamaedorea elegans*  
(CE) Parlor Palm



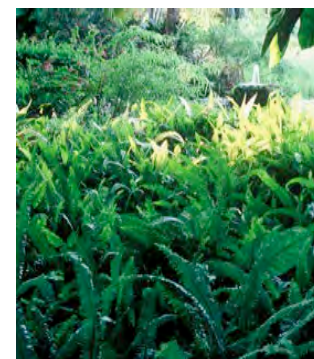
*Licuala lauterbachii*  
(LL) Licuala Palm



*Clusia nana*  
(CN) Dwarf Clusia



*Microsorium scolopendrium*  
(MS) Wart Fern



*Nephrolepis exaltata*  
(NE) Boston Fern



*Philodendron*  
(BM)'Burle Marx'

1611

**moxy**  
HOTELS

915 Washington Avenue  
Miami Beach, FL 33139

OWNER

**LIGHTSTONE**

460 Park Avenue  
New York, NY 10022  
O: 212.616.9969

INTERIOR DESIGNER

**ROCKWELLGROUP**

5 Union Square West  
New York, NY 10003  
O: 212.463.0334

LIGHTING DESIGNER

**BOLD**

227 West 29th Street  
New York, NY 10001  
O: 212.674.6500

LANDSCAPE ARCHITECT

**NATURALFICIAL**

Landscape Architecture + Design  
6915 Red Road Suite 224  
Coral Gables, FL 33143  
O: 305.321.2341 | Firm# LC26000548

Peter N. Anselmo  
R.L.A. FL# 6667221

KOBI KARP



ARCHITECTURE  
INTERIOR DESIGN  
P L A N N I N G

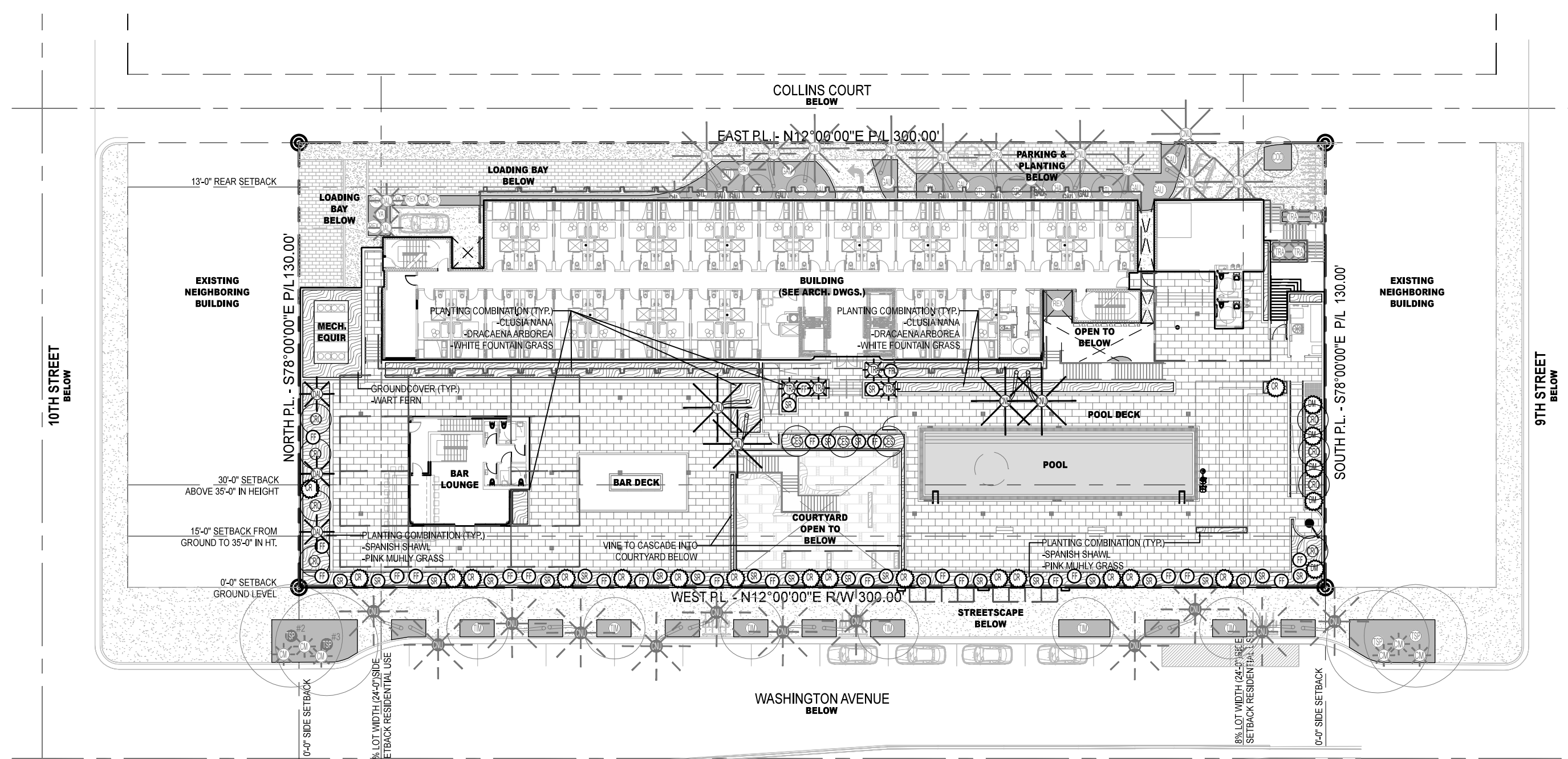
2915 Biscayne Boulevard, Suite 200  
Miami, Florida 33137  
O: 305.573.1818  
F: 305.573.3766

AIA ASID NCARB  
License #AR0012578  
WWW.KOBIKARP.COM

ALL DRAWINGS AND WRITTEN MATERIAL APPEARING HEREIN CONSTITUTE THE ORIGINAL AND UNPUBLISHED WORK OF KOBI KARP AIA, AND MAY NOT BE  
DUPLICATED, USED, OR DISCLOSED WITHOUT THE EXPRESS WRITTEN CONSENT OF KOBI KARP ARCHITECTURE & INTERIOR DESIGN, INC. AIA (©) 2016

Historic Preservation Board Submission  
**LVL 1 PLANTING**  
**REFERENCE IMAGES**  
SCALE: N.T.S.  
08-29-2016

**L-3.02**

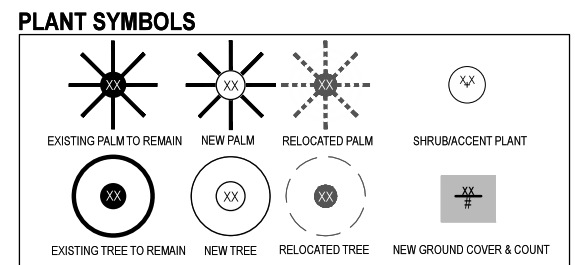


NFI MOXY MIAMI PLANT LIST: LVL 2 - 2016.08.29

QTY	ABRV.	BOTANICAL NAME	COMMON NAME	SPECIFICATIONS	FL. NATIVE		DROUGHT TOLERANT	
					YES	NO	YES	NO
<b>TREES</b>								
8	CRD	<i>Clusia rosea</i>	Autograph Tree	8' - 10' ht.	X		X	
3	QES	<i>Conocarpus erectus var. serotinus</i>	Silver Buttonwood	6' - 8' ht.	X		X	
<b>PALMS</b>								
4	CVU	<i>Cocos nucifera</i>	Coconut Palm	20'-25' ht.		X	X	
3	DAL	<i>Dictyospermia album</i>	Hurricane Palm	6' ht.		X	X	
4	TRA	<i>Thrinax radiata</i>	Florida Thatch Palm	10' - 14' ht.	X		X	
<b>SHRUBS</b>								
TBD	CN	<i>Clusia nana</i>	Dwarf Clusia	TBD	X		X	
TBD	DA	<i>Dracaena arborea</i>	Same	TBD		X	X	
5	DM	<i>Dracaena marginata</i>	Green Dracaena	TBD		X	X	
25	SR	<i>Serenia repens 'Silver Form'</i>	Silver Saw Palmetto	15G	X		X	
<b>ACCENTS</b>								
17	CR	<i>Cycas revoluta</i>	King Sago	15G		X	X	
24	FF	<i>Furcraea foetida</i>	Green Giant Cabuya (Agave)	15G		X	X	

NFI MOXY MIAMI PLANT LIST: LVL 2 - 2016.08.29

QTY	ABRV.	BOTANICAL NAME	COMMON NAME	SPECIFICATIONS	FL. NATIVE	DROUGHT TOLERANT	
						YES	NO
<b>GROUNDCOVERS</b>							
TBD	HE	<i>Heterocentron elegans</i>	Spanish Shawl (dwarf variety)	TBD		X	X
TBD	MS	<i>Microsorium scolopendrium</i>	Wart Fern	TBD	X		X
TBD	MC	<i>Muhlenbergia capillaris</i>	Muhly Grass (Pink)	TBD	X		X
TBD	PSA	<i>Pennisetum setaceum 'Alba'</i>	White Fountain Grass	TBD	X		X
<b>VINES</b>							
TBD	QI	<i>Quisqualis indica</i>	Ragoon Creeper (red-pink flower)	TBD		X	X



1611  
moxy  
HOTELS  
915 Washington Avenue  
Miami Beach, FL 33139

OWNER  
LIGHTSTONE  
460 Park Avenue  
New York, NY 10022  
O: 212.616.9969

INTERIOR DESIGNER  
ROCKWELLGROUP  
5 Union Square West  
New York, NY 10003  
O: 212.463.0334

LIGHTING DESIGNER  
BOLD  
227 West 29th Street  
New York, NY 10001  
O: 212.674.6500

LANDSCAPE ARCHITECT  
NATURALFICIAL  
Landscape Architecture + Design  
6915 Red Road Suite 224  
Coral Gables, FL 33143  
O: 305.321.2341 | Firm# LC26000548

Peter N. Anselmo  
R.L.A. FL# 6667221

KOBI KARP  
ARCHITECTURE  
INTERIOR DESIGN  
PLANNING

2915 Biscayne Boulevard, Suite 200  
Miami, Florida 33137  
O: 305.573.1818  
F: 305.573.3766  
AIA ASID NCARB  
License #AR0012578  
WWW.KOBIKARP.COM

Historic Preservation Board Submission  
LVL 2 LANDSCAPE PLAN  
SCALE: 1/32" = 1'-0"  
08-29-2016

L-3.03

ALL DRAWINGS AND WRITTEN MATERIAL APPEARING HEREIN CONSTITUTE THE ORIGINAL AND UNPUBLISHED WORK OF KOBI KARP AIA, AND MAY NOT BE REPRODUCED, COPIED, OR DISCLOSED WITHOUT THE EXPRESS WRITTEN CONSENT OF KOBI KARP ARCHITECTURE & INTERIOR DESIGN, INC. AIA (I) 2016



*Clusia rosea*  
(CRO) Autograph Tree



*Conocarpus erectus* var. ser.  
(CES) Silver Buttonwood



*Cocos nucifera*  
(CNU) Coconut Palm



*Dictyosperma album*  
(DAL) Hurricane Palm



*Thrinax radiata*  
(TRA) Florida Thatch Palm



*Clusia 'Nana'*  
(CN) Dwarf Clusia



(DA) *Dracaena arborea*



*Dracaena marginata*  
(DM) Green Dracaena



*Cycas revoluta*  
(CR) King Sago



*Furcraea foetida*  
(FF) Giant Cabuya Agave



*Serenoa repens* 'Silver form'  
(SR) Silver Saw Palmetto



*Heterocentron elegans*  
(HE) Spanish Shawl



*Microsorium scolopendrium*  
(MS) Wart Fern



*Muhlenbergia capillaris*  
(MU) Muhly Grass



*Pennisetum setaceum* 'Alba'  
(PSA) White Fountain Grass



*Quisqualis indica*  
(QI) Ragoon Creeper

1611



915 Washington Avenue  
Miami Beach, FL 33139

OWNER

**LIGHTSTONE**

460 Park Avenue  
New York, NY 10022  
O: 212.616.9969

INTERIOR DESIGNER

**ROCKWELLGROUP**

5 Union Square West  
New York, NY 10003  
O: 212.463.0334

LIGHTING DESIGNER

**BOLD**

227 West 29th Street  
New York, NY 10001  
O: 212.674.6500

LANDSCAPE ARCHITECT

**NATURALFICIAL**

Landscape Architecture + Design  
6915 Red Road Suite 224  
Coral Gables, FL 33143  
O: 305.321.2341 | Firm# LC26000548

Peter N. Anselmo  
R.L.A. FL# 6667221

KOBI KARP



ARCHITECTURE  
INTERIOR DESIGN  
P L A N N I N G

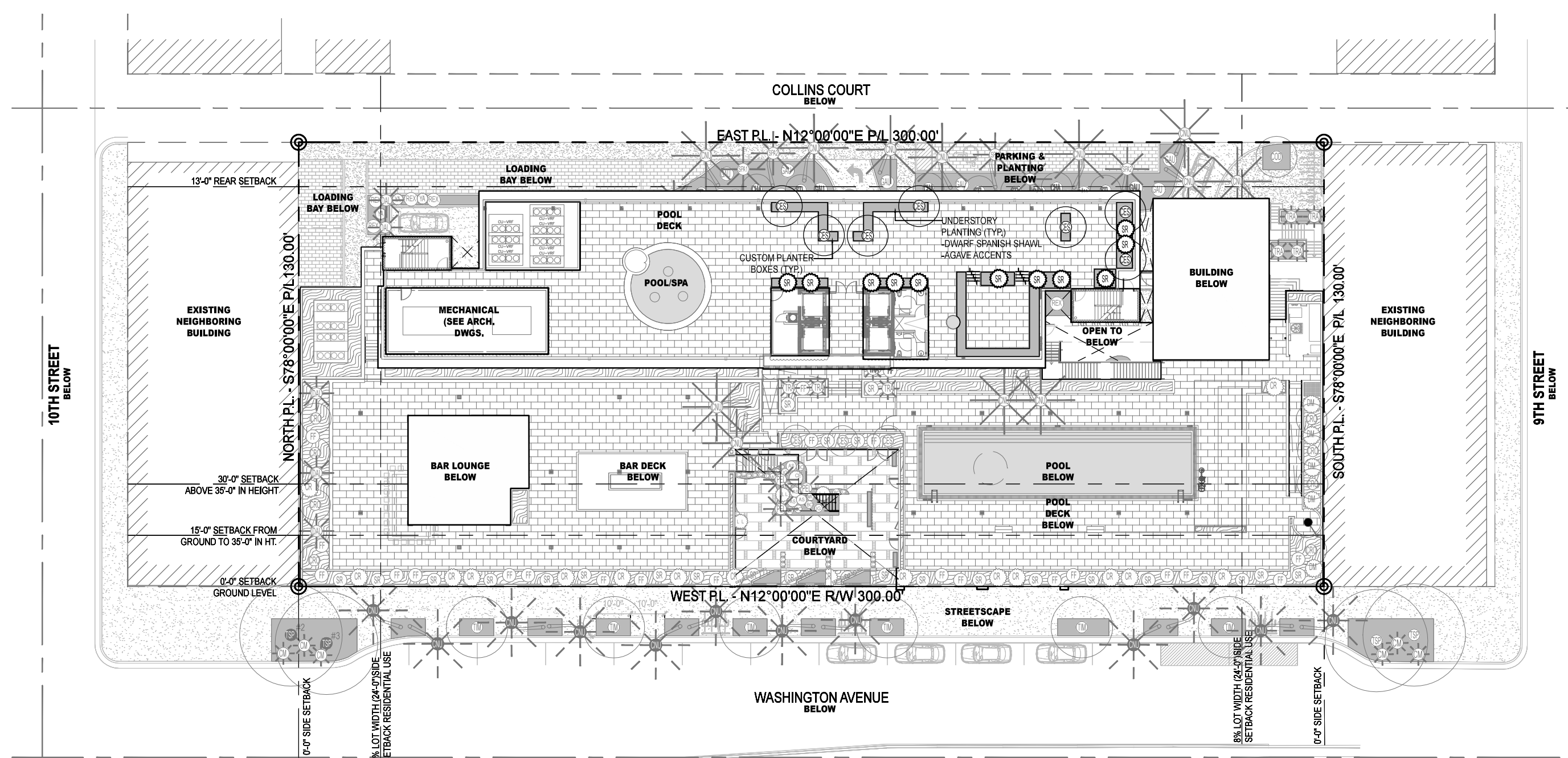
2915 Biscayne Boulevard, Suite 200  
Miami, Florida 33137  
O: 305.573.1818  
F: 305.573.3766

AIA ASID NCARB  
License #AR0012578  
WWW.KOBIKARP.COM

ALL DRAWINGS AND WRITTEN MATERIAL APPEARING HEREIN CONSTITUTE THE ORIGINAL AND UNPUBLISHED WORK OF KOBI KARP AIA, AND MAY NOT BE  
DUPLICATED, USED, OR DISCLOSED WITHOUT THE EXPRESS WRITTEN CONSENT OF KOBI KARP ARCHITECTURE & INTERIOR DESIGN, INC. AIA (P) 2016

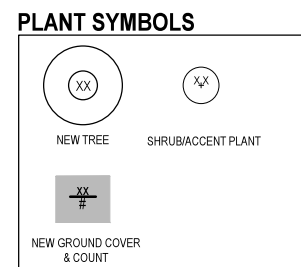
Historic Preservation Board Submission  
**LVL 2 PLANTING**  
REFERENCE IMAGES  
SCALE: N.T.S.  
08-29-2016

**L-3.04**



**NFI MOXY MIAMI PLANT LIST: ROOFTOP LVL - 2016.08.29**

QTY	ABRV.	BOTANICAL NAME	COMMON NAME	SPECIFICATIONS	FL. NATIVE		DROUGHT TOLERANT	
					YES	NO	YES	NO
<b>TREES</b>								
7	CES	<i>Conocarpus erectus var. sericeus</i>	Silver Buttonwood	Specimen Multi-Trunk	X		X	
<b>SHRUBS</b>								
11	SR	<i>Serenoa repens 'Silver Form'</i>	Silver Saw Palmetto	T.B.D.	X		X	
<b>ACCENTS</b>								
T.B.D.	FF	<i>Furcraea foetida</i>	Giant Cabuya (Agave)	T.B.D.		X	X	
<b>GROUNDCOVERS</b>								
T.B.D.	HE	<i>Heterocentron elegans</i>	Spanish Shawl (dwarf variety)	T.B.D.		X		X



1611  
  
 915 Washington Avenue  
 Miami Beach, FL 33139

OWNER  
**LIGHTSTONE**  
 460 Park Avenue  
 New York, NY 10022  
 O: 212.616.9969

INTERIOR DESIGNER  
**ROCKWELLGROUP**  
 5 Union Square West  
 New York, NY 10003  
 O: 212.463.0334

LIGHTING DESIGNER  
**BOLD**  
 227 West 29th Street  
 New York, NY 10001  
 O: 212.674.6500

LANDSCAPE ARCHITECT  
**NATURALFICIAL**  
 Landscape Architecture + Design  
 6915 Red Road Suite 224  
 Coral Gables, FL 33143  
 O: 305.321.2341 | Firm# LC26000548

Peter N. Anselmo  
 R.L.A. FL# 6667221

**KOBI KARP**  
  
 ARCHITECTURE  
 INTERIOR DESIGN  
 PLANNING

2915 Biscayne Boulevard, Suite 200  
 Miami, Florida 33137  
 O: 305.573.1818  
 F: 305.573.3766

AIA ASID NCARB  
 License #AR0012578  
 WWW.KOBIKARP.COM

Historic Preservation Board Submission

**ROOFTOP LVL LANDSCAPE PLAN**  
 SCALE: 1/32" = 1'-0"  
 08-29-2016

**L-3.05**

ALL DRAWINGS AND WRITTEN MATERIAL APPEARING HEREIN CONSTITUTE THE ORIGINAL AND UNPUBLISHED WORK OF KOBI KARP AND MAY NOT BE DUPLICATED, USED, OR DISCLOSED WITHOUT THE EXPRESS WRITTEN CONSENT OF KOBI KARP ARCHITECTURE & INTERIOR DESIGN, INC. AIA (P) 2016



*Conocarpus erectus var. sericeus*  
(CES) Silver Buttonwood



*Serenoa repens 'Silver Form'*  
(SR) Silver Saw Palmetto



*Furcraea foetida*  
(FF) Giant Cabuya Agave



*Heterocentron elegans*  
(HE) Dwarf Spanish Shawl



1611  
915 Washington Avenue  
Miami Beach, FL 33139

OWNER  
**LIGHTSTONE**

460 Park Avenue  
New York, NY 10022  
O: 212.616.9969

INTERIOR DESIGNER  
**ROCKWELLGROUP**

5 Union Square West  
New York, NY 10003  
O: 212.463.0334

LIGHTING DESIGNER  
**BOLD**

227 West 29th Street  
New York, NY 10001  
O: 212.674.6500

LANDSCAPE ARCHITECT  
**NATURALFICIAL**

Landscape Architecture + Design  
6915 Red Road Suite 224  
Coral Gables, FL 33143  
O: 305.321.2341 | Firm# LC26000548

Peter N. Anselmo  
R.L.A. FL# 6667221

**KOBI KARP**  
  
ARCHITECTURE  
INTERIOR DESIGN  
P L A N N I N G

2915 Biscayne Boulevard, Suite 200  
Miami, Florida 33137  
O: 305.573.1818  
F: 305.573.3766

AIA ASID NCARB  
License #AR0012578  
WWW.KOBIKARP.COM

ALL DRAWINGS AND WRITTEN MATERIAL APPEARING HEREIN CONSTITUTE THE ORIGINAL AND UNPUBLISHED WORK OF KOBI KARP AIA, AND MAY NOT BE  
DUPLICATED, USED, OR DISCLOSED WITHOUT THE EXPRESS WRITTEN CONSENT OF KOBI KARP ARCHITECTURE & INTERIOR DESIGN, INC. AIA (P) 2016

Historic Preservation Board Submission  
**ROOFTOP LVL PLANTING  
REFERENCE IMAGES**  
SCALE: N.T.S.  
08-29-2016

**L-3.06**