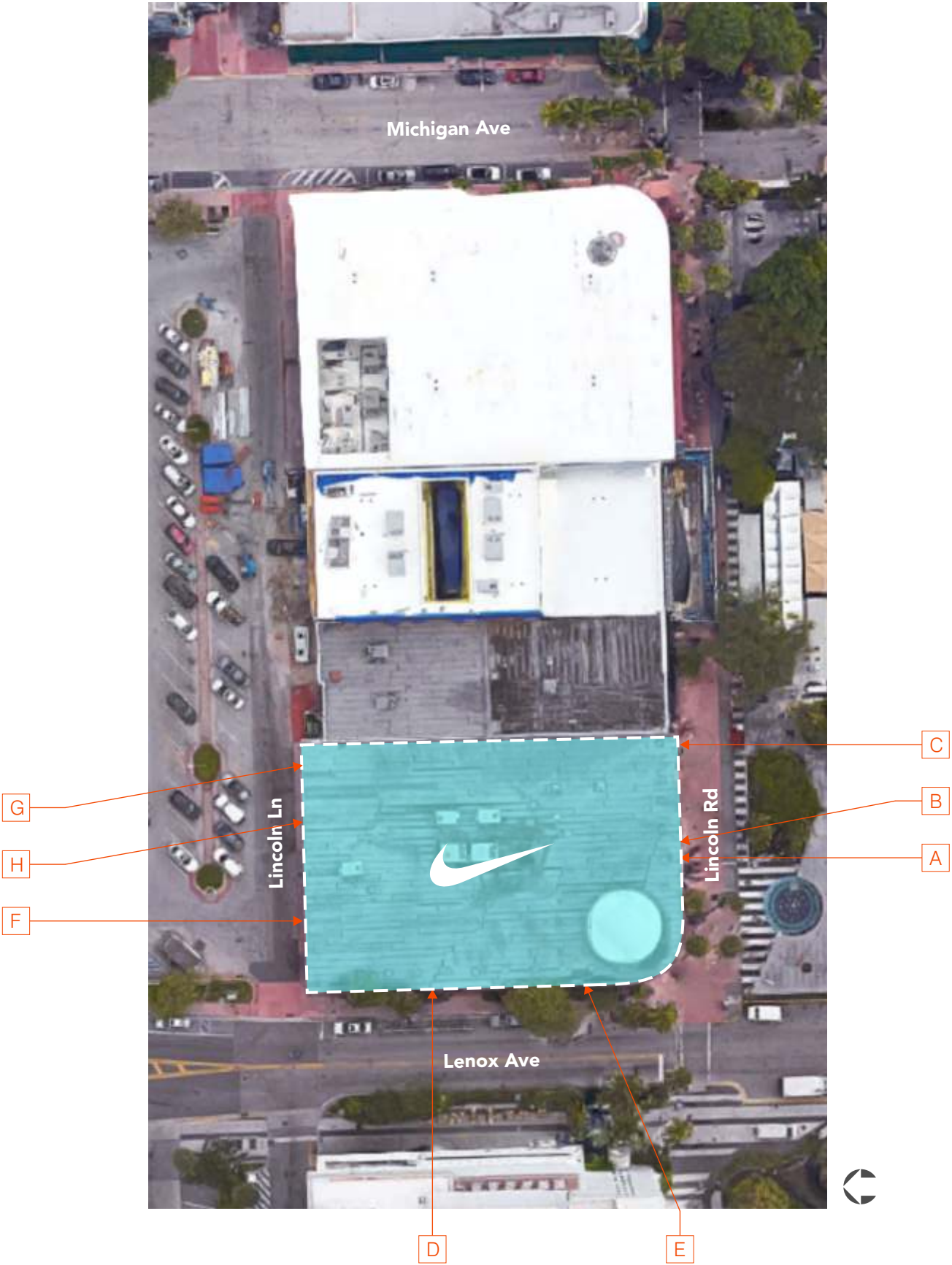
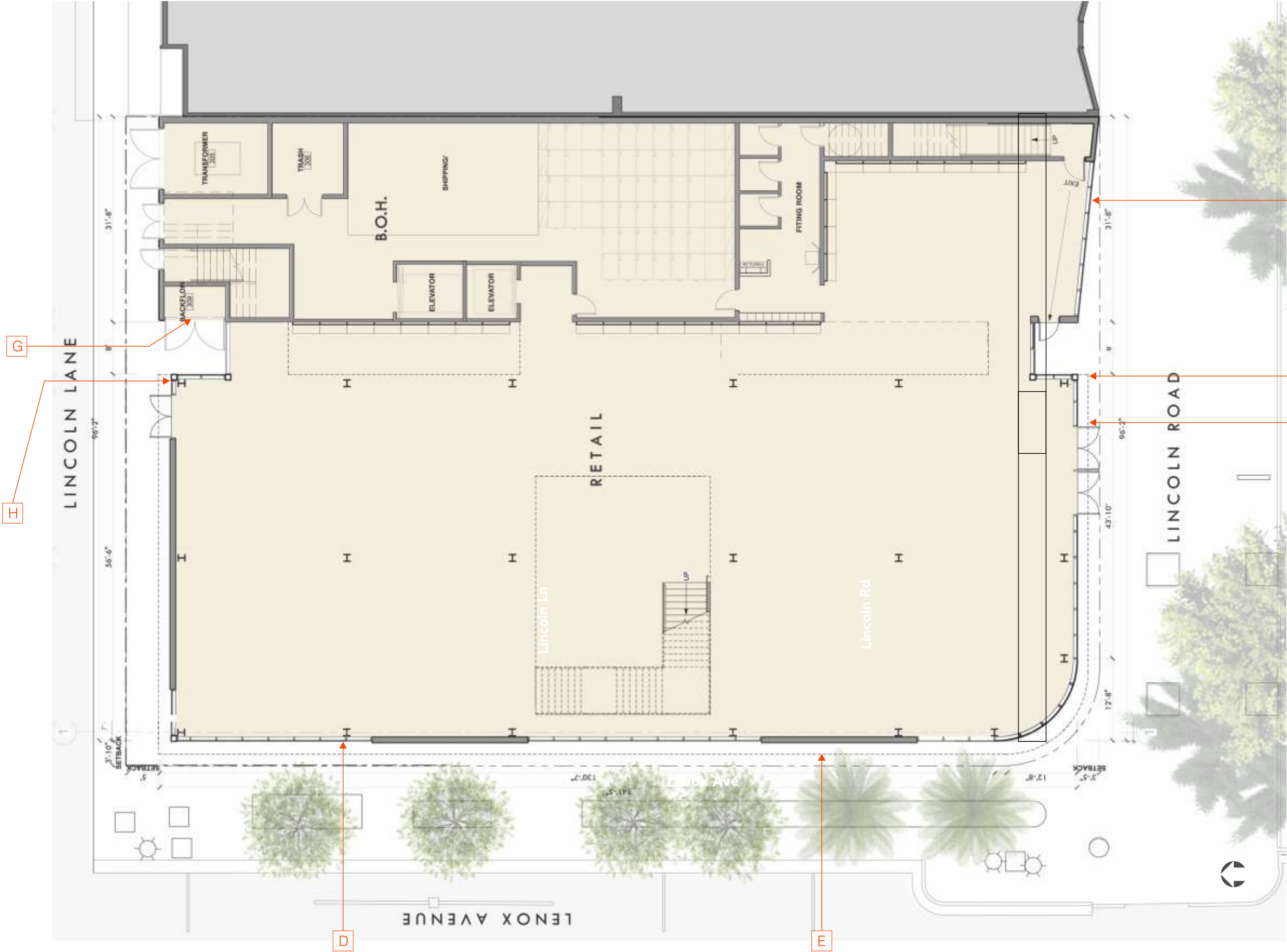


- A** 3'-5 3/4" x 9'-10" Face-Lit Swoosh
- B** 21" x 33" Illuminated Blade Sign 1
- C** 9'-10" x 4'-4" NIKE Relief Cast
- D** 21" x 33" Illuminated Blade Sign 2
- E** 3'-5 3/4" x 9'-10" Face-Lit Swoosh
- F** 3'-5 3/4" x 9'-10" Face-Lit Swoosh
- G** 9'-8" x 4'-3 3/4" Painted NIKE Letters
- H** 17" x 23" Illuminated Blade Sign 3

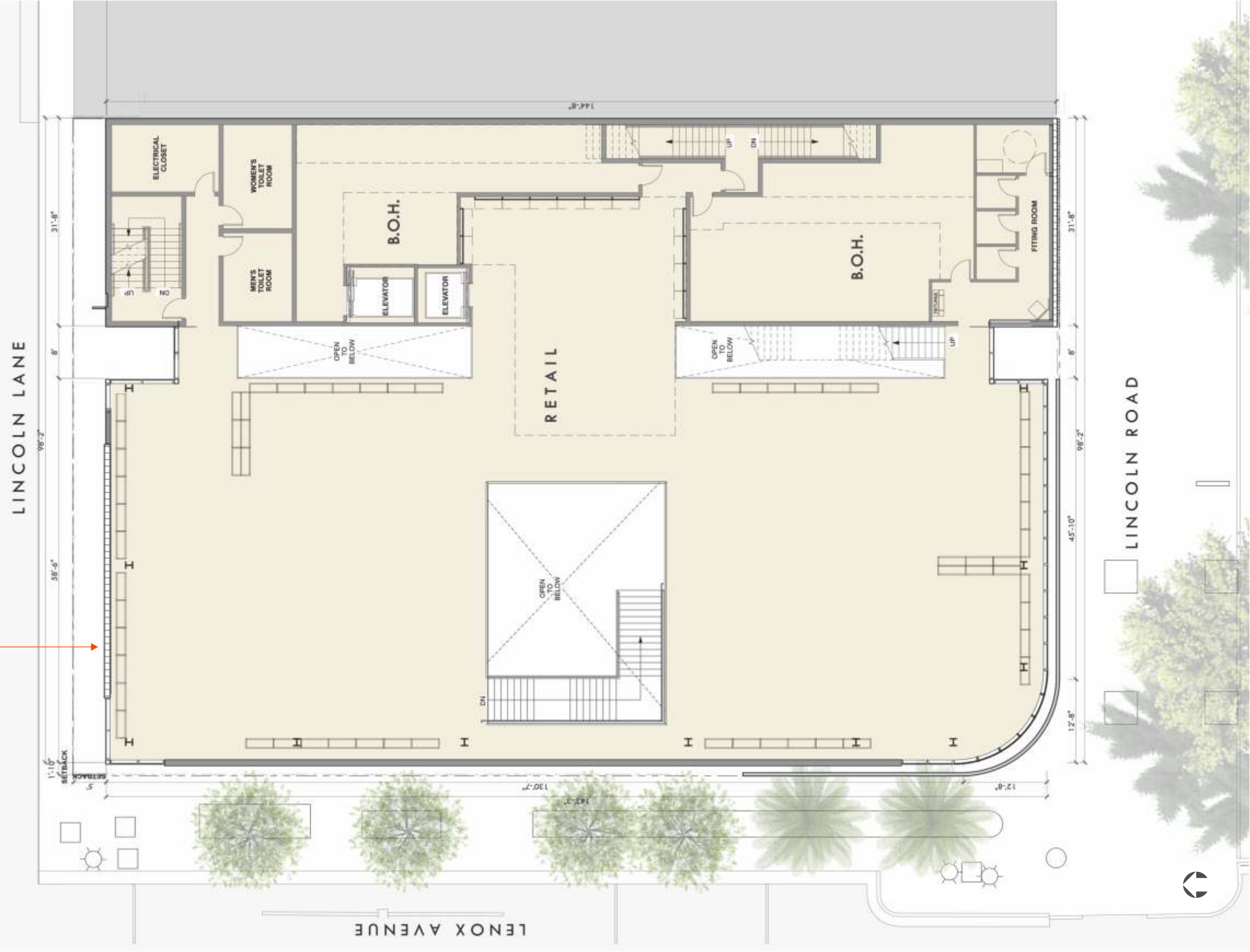


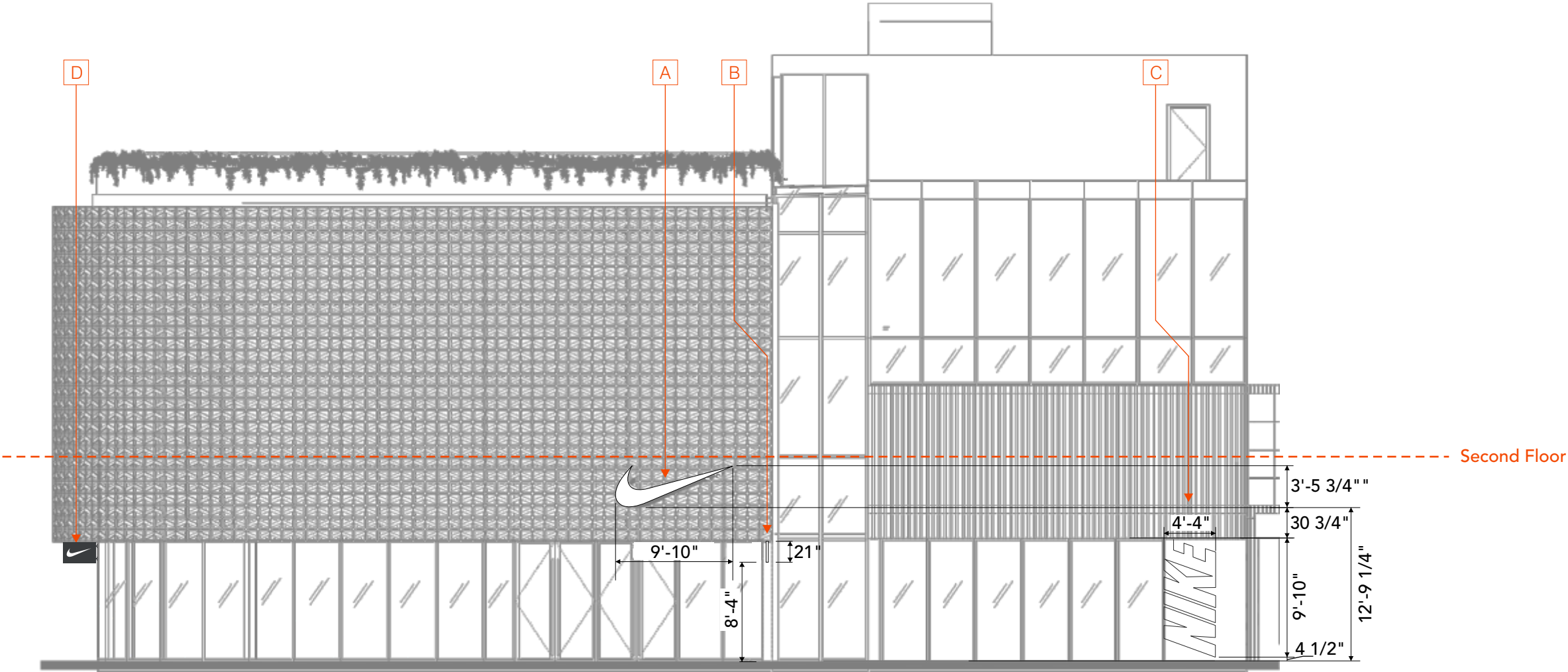
- A 3'-5 3/4" x 9'-10" Face-Lit Swoosh
- B 21" x 33" Illuminated Blade Sign 1
- C 9'-10" x 4'-4" NIKE Relief Cast
- D 21" x 33" Illuminated Blade Sign 2
- E 3'-5 3/4" x 9'-10" Face-Lit Swoosh
- G 9'-8" x 4'-3 3/4" Painted NIKE Letters
- H 17" x 23" Illuminated Blade Sign 3



F 3'-5 3/4" x 9'-10" Face-Lit Swoosh

F →





Elevation Span Must be Field Verified

SOUTH ELEVATION
SCALE: 3/32" = 1'- 0"

Blade Sign: 4.82 Square Feet
Swoosh: 34.21 Square Feet
Painted NIKE Letters: 42.60 Square Feet

Total Square Footage for South Elevation: 81.63 Square Feet

- A 3'-5 3/4" x 9'-10" Face-Lit Swoosh
- B 21" x 33" Illuminated Blade Sign 1
- C 9'-10" x 4'-4" NIKE Relief Cast
- D 21" x 33" Illuminated Blade Sign 2

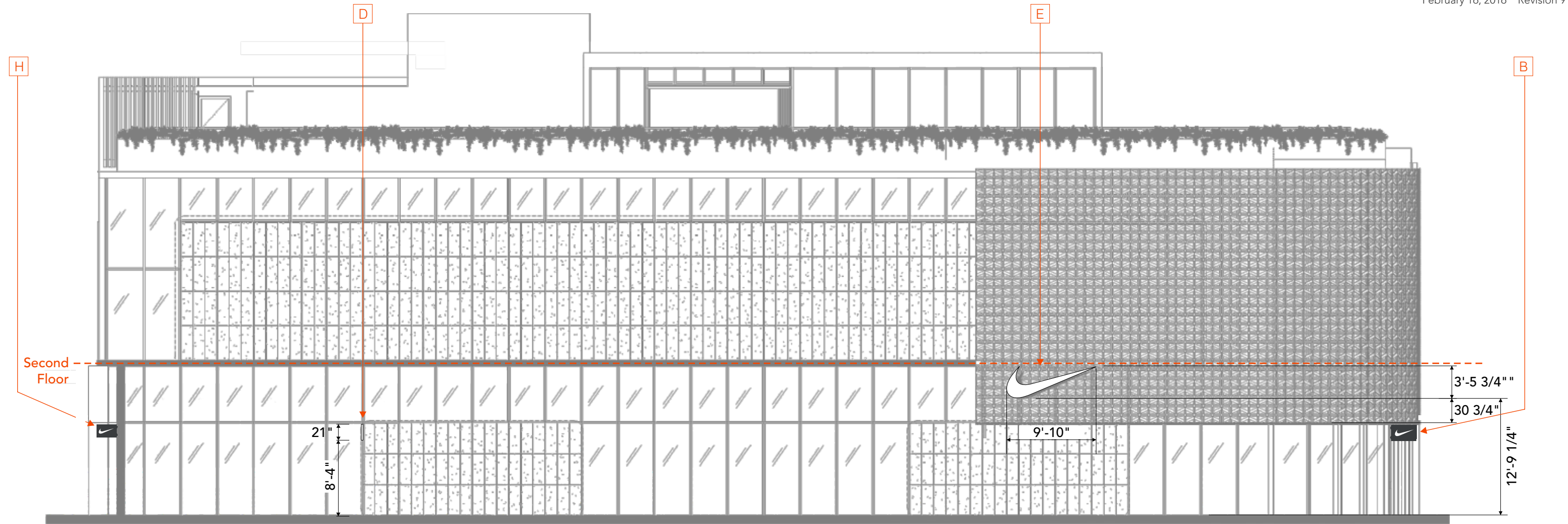


Proposed: Storefront



Existing: Storefront





Elevation Span Must be Field Verified

WEST ELEVATION
SCALE: 3/32" = 1'-0"

Blade Sign: 4.28 Square Feet
Swoosh: 34.21 Square Feet

Total Square Footage for West Elevation: 38.49 Square Feet

- B 21" x 33" Illuminated Blade Sign 1
- D 21" x 33" Illuminated Blade Sign 2
- E 3'-5 3/4" x 9'-10" Face-Lit Swoosh
- H 17" x 23" Illuminated Blade Sign 3

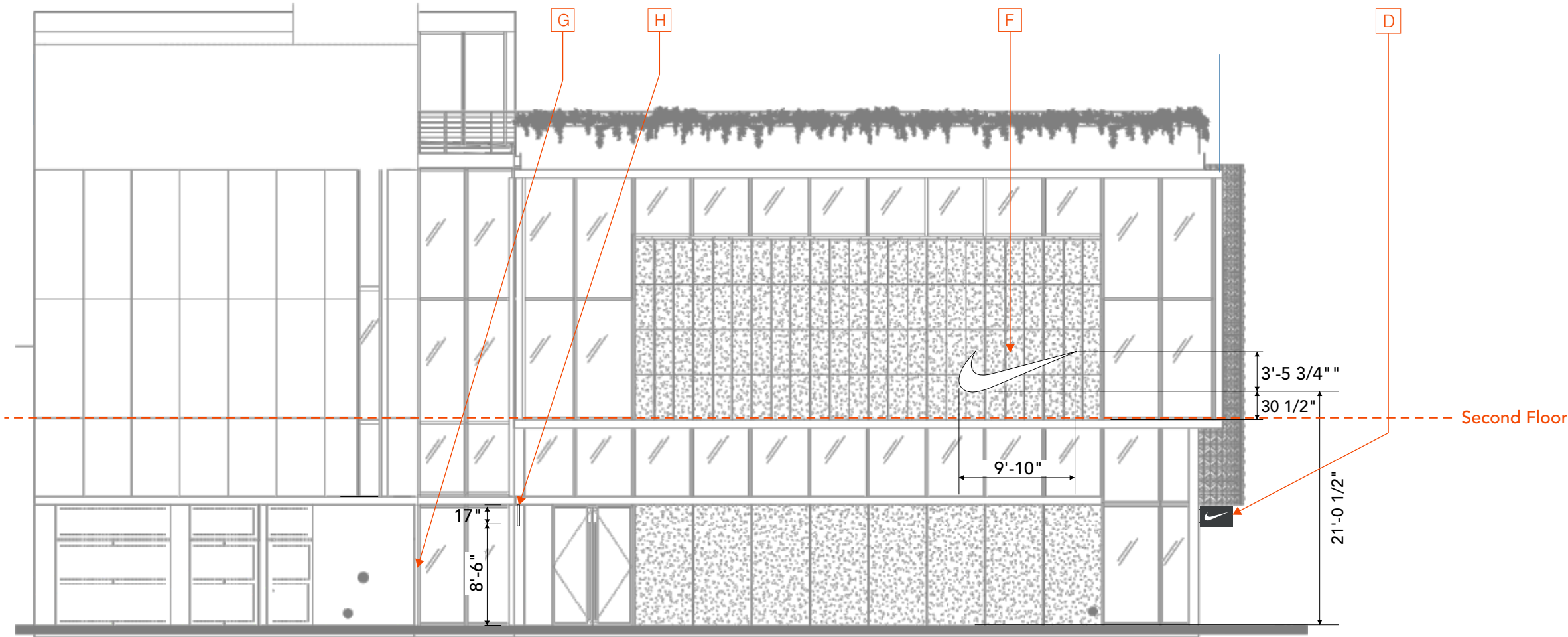


Proposed: Storefront



Existing: Storefront





Elevation Span Must be Field Verified

NORTH ELEVATION
SCALE: 3/32" = 1'-0"

Blade Sign: 2.36 Square Feet
Swoosh: 34.21 Square Feet
Painted NIKE Letters: 41.70 Square Feet

Total Square Footage for North Elevation: 78.27 Square Feet

- D 21" x 33" Illuminated Blade Sign 2
- F 3'-5 3/4" x 9'-10" Face-Lit Swoosh
- G 9'-8" x 4'-3 3/4" Painted NIKE Letters
- H 17" x 23" Illuminated Blade Sign 3



Proposed: Storefront



Existing: Storefront



A E F

Illumination
Standard White 4000k LEDs.
LEDs to be Attached to Back Aim In.
12V Remote Power Supply

Face
3/4" Clear Acrylic Face Face with
Sharp Point Tips. Translucent White Vinyl Applied
to First and Second Surface of Face. White Diffuser
Vinyl (30%) Applied Second Surface to the
Second Surface Translucent White Vinyl. Face
Attached to Return with Countersunk
Screws Flush with Return With Countersunk
Screws That Are Covered With Body Work To
Permanently Conceal Them.

Return
2" x .090" Fabricated Aluminum with Mitered
Tips to Provide Sharp Points. Returns to be
Seamless. Interior of Return Painted White.
Exterior to Match Alpha Coating
Technologies CNC Grey #ACT-158-80-2
(NAS Formula GGP-499G3 90% Flat).

Back
3/8" Clear Polycarbonate with 60% Diffuser
Vinyl Applied to the Entire Second Surface.
Attached to Returns with Clips From Return
Fasteners on Back Only.

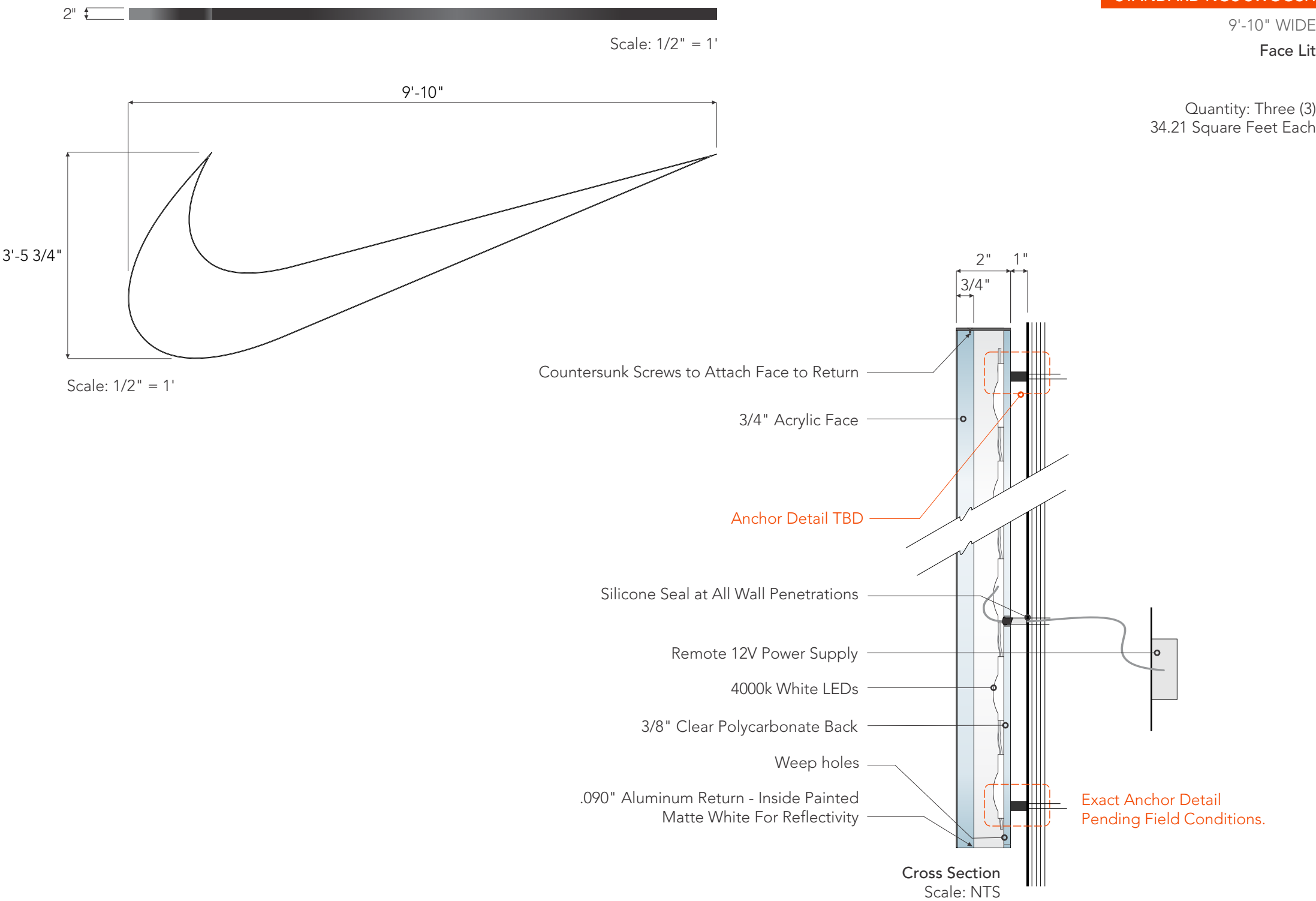
Weep Holes (For Exterior Applications Only)

Mounting
Exact Mounting Method TBD Pending Field Conditions.
All Mounting Hardware and Electrical Pass
Thru to be Painted to Match Alpha Coating
Technologies CNC Grey #ACT-158-80-2
(NAS Formula GGP-499G3 90% Flat).(Qty.4)

Electric
25'-0" Electrical Whips
UL Listed / Exterior

 All aluminum to have
Kynar 2605 finish.

*Sign to Have 15 A 120V Circuit
*Power to be Provided within 10'-0" of Sign



SWOOSH

STANDARD NOS SWOOSH

9'-10" WIDE

Face Lit

Quantity: Three (3)
34.21 Square Feet Each



B D

Illumination
White LEDs.
LEDs Perimeter Mounted.
60 Watt 120 Volt Power Supply, Self-Contained.

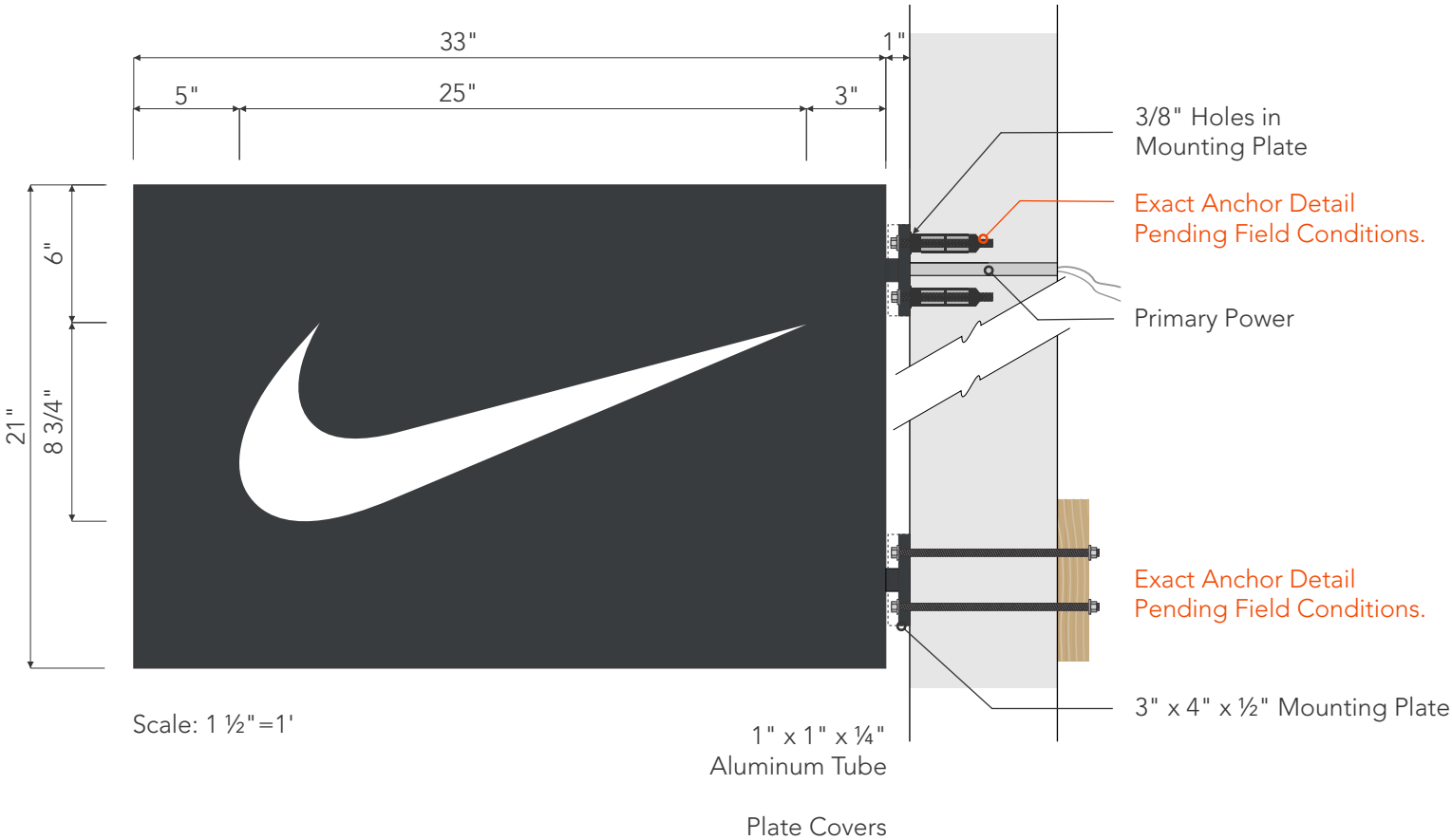
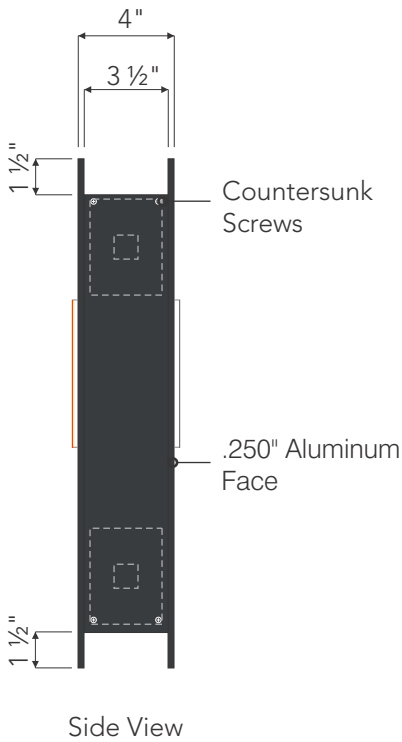
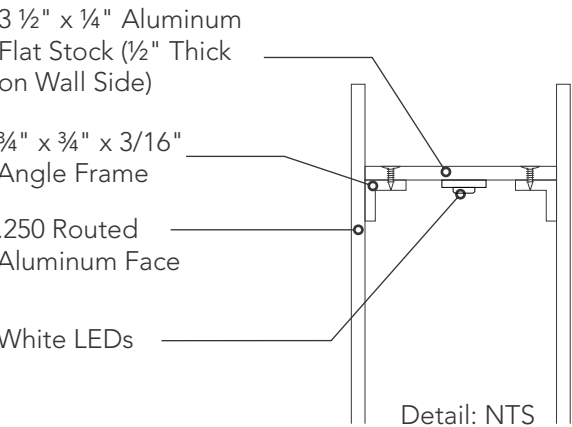
Face
.250" Aluminum Faces Painted front & back to Match Alpha Coating Technologies CNC Grey #ACT-158-80-2 (NAS Formula GGP-499G3 90% Flat). Faces to Have ¾" x ¾" x 3/16" Aluminum Angle Frame Plug Welded to the Backs. Faces Attached with Countersunk Screws Painted to Match Channel Frame.

¾" Thick Clear Acrylic Push-Thru "Swoosh" to be Proud ¼" of Aluminum Face. "Swoosh" To Have First & Second Translucent White Vinyl Applied To Face and 30% White Diffuser Applied Second Surface.

Frame
3 ½" x ¼" Aluminum Flat Stock on Three (3) Sides and ½" Thick Flat Stock on Wall Side Mitered and Welded to Form Frame. Frame Is Painted to Match Alpha Coating Technologies CNC Grey #ACT-158-80-2 (NAS Formula GGP-499G3 90% Flat). Baffled Weep Holes at Bottom.

Mounting
Exact Mounting Method TBD Pending Field Conditions.
Aluminum Tubes and Match Plates to Match Technologies CNC Grey #ACT-158-80-2 (NAS Formula GGP-499G3 90% Flat).

Electric
Electric To Exit Through 1" x 1" Aluminum Tubes
25' Primary Whip Through Top Mounting Arm Unless Otherwise Instructed.
UL Listed \ Exterior



BLADE SIGN

CUSTOM BLADE SIGN

Face Lit

Quantity: Two (2) Blade Signs
4.82 Square Feet Each

Surface area of White Swoosh is .39 Square Feet



H

Illumination
White LEDs.
LEDs Perimeter Mounted.
60 Watt 120 Volt Power Supply, Self-Contained.

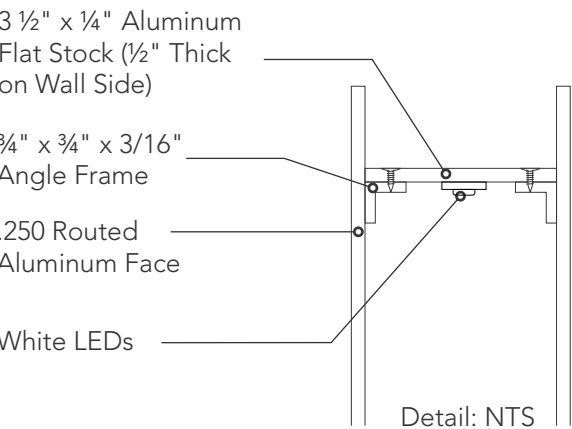
Face
.250" Aluminum Faces Painted front & back to Match Alpha Coating Technologies CNC Grey #ACT-158-80-2 (NAS Formula GGP-499G3 90% Flat). Faces to Have 3/4" x 3/4" x 3/16" Aluminum Angle Frame Plug Welded to the Backs. Faces Attached with Countersunk Screws Painted to Match Channel Frame.

3/4" Thick Clear Acrylic Push-Thru "Swoosh" to be Proud 1/4" of Aluminum Face. "Swoosh" To Have First & Second Translucent White Vinyl Applied To Face and 30% White Diffuser Applied Second Surface.

Frame
3 1/2" x 1/4" Aluminum Flat Stock on Three (3) Sides and 1/2" Thick Flat Stock on Wall Side Mitered and Welded to Form Frame. Frame Is Painted to Match Alpha Coating Technologies CNC Grey #ACT-158-80-2 (NAS Formula GGP-499G3 90% Flat). Baffled Weep Holes at Bottom.

Mounting
Exact Mounting Method TBD Pending Field Conditions.
Aluminum Tubes and Match Plates to Match Technologies CNC Grey #ACT-158-80-2 (NAS Formula GGP-499G3 90% Flat).

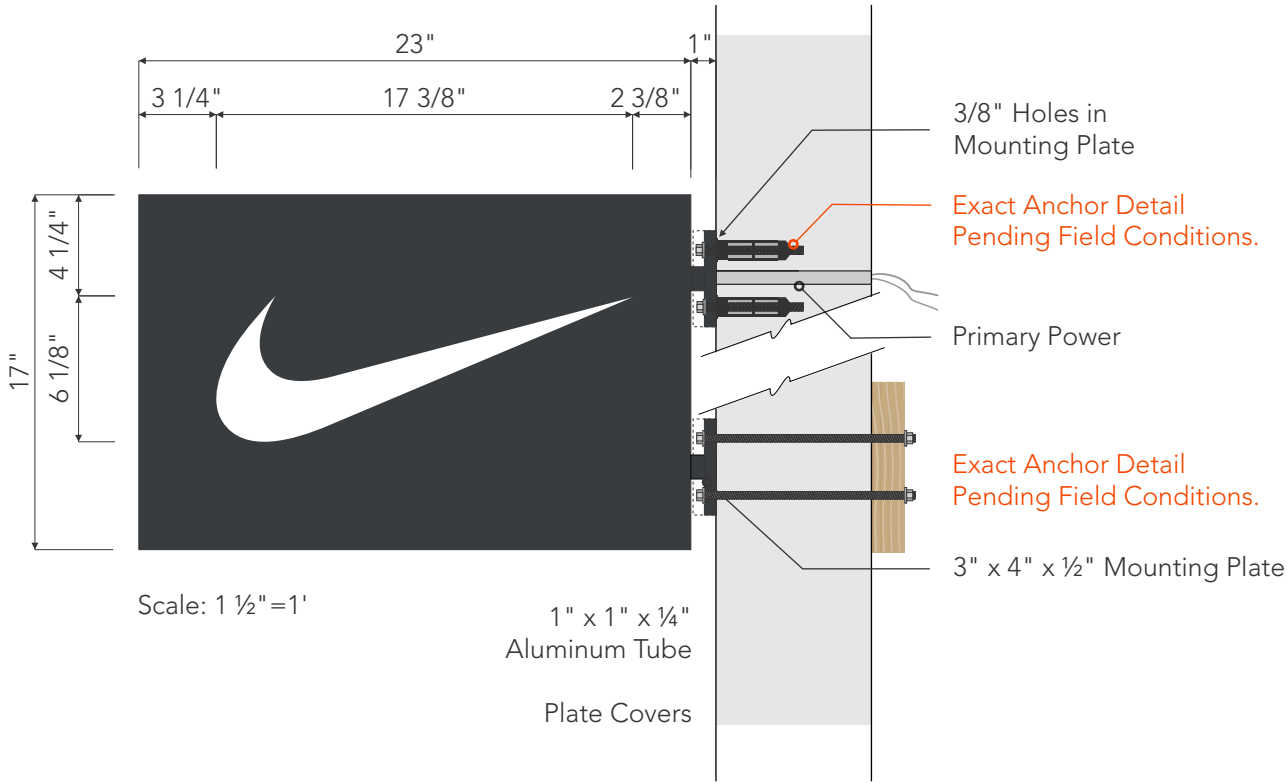
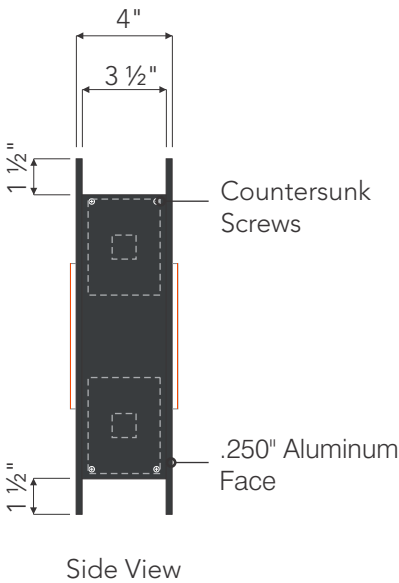
Electric
Electric To Exit Through 1" x 1" Aluminum Tubes
25' Primary Whip Through Top Mounting Arm Unless Otherwise Instructed.
UL Listed \ Exterior



All aluminum to have Kynar 2605 finish.

UL LISTED

*Sign to Have 15 A 120V Circuit



BLADE SIGN

CUSTOM BLADE SIGN

Face Lit

Quantity: One (1) Blade Sign
2.36 Square Feet Each

Surface area of White Swoosh is .33 Square Feet



C

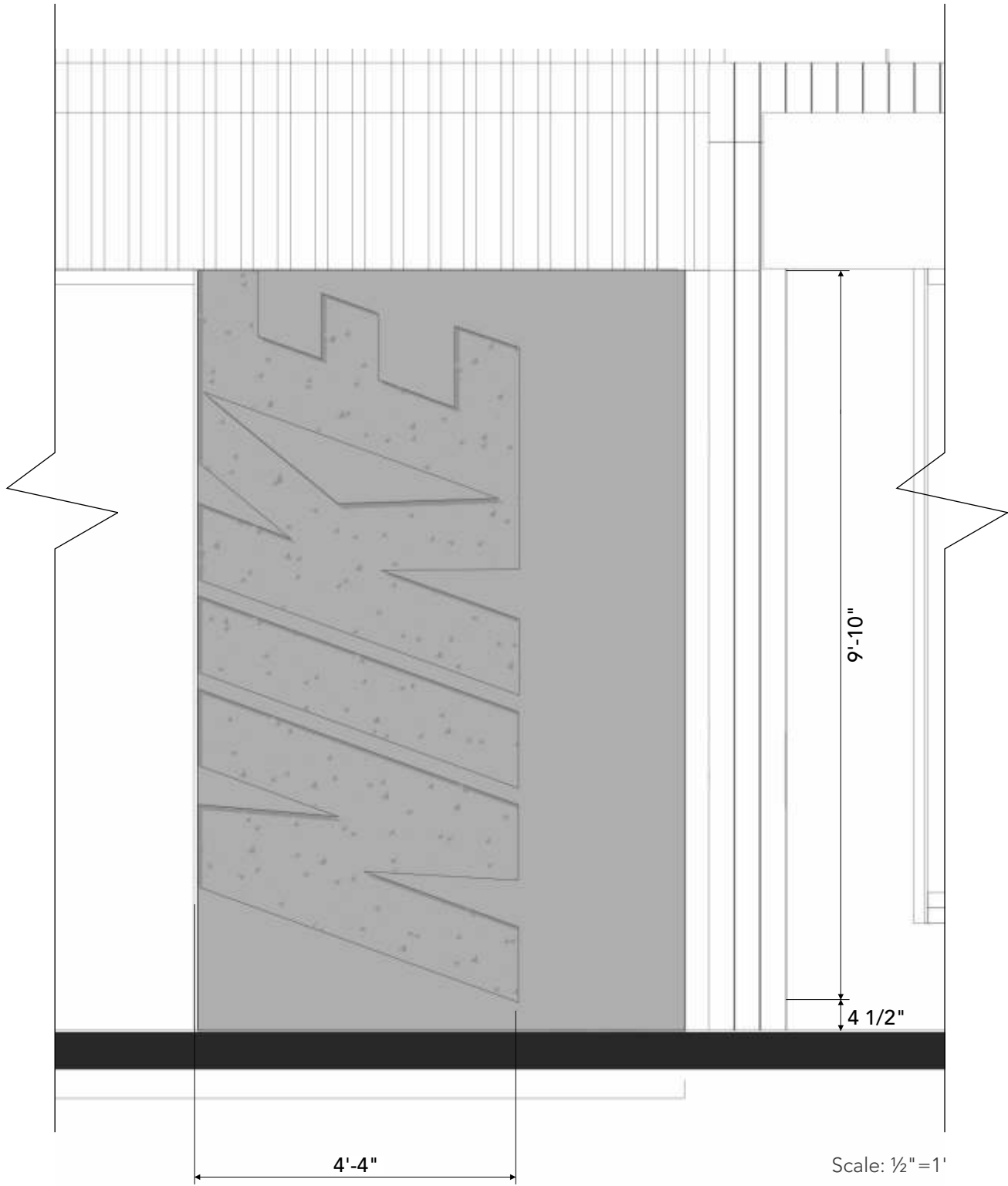
NIKE CAST

CUSTOM IN SURFACE RELIEF

Non-Illuminated

9'-10" x 4'-4" In Surface Relief

Quantity: One (1)
42.6 Square Feet



This is a photo example. Actual placement of relief may vary.



Painted NIKE Letters

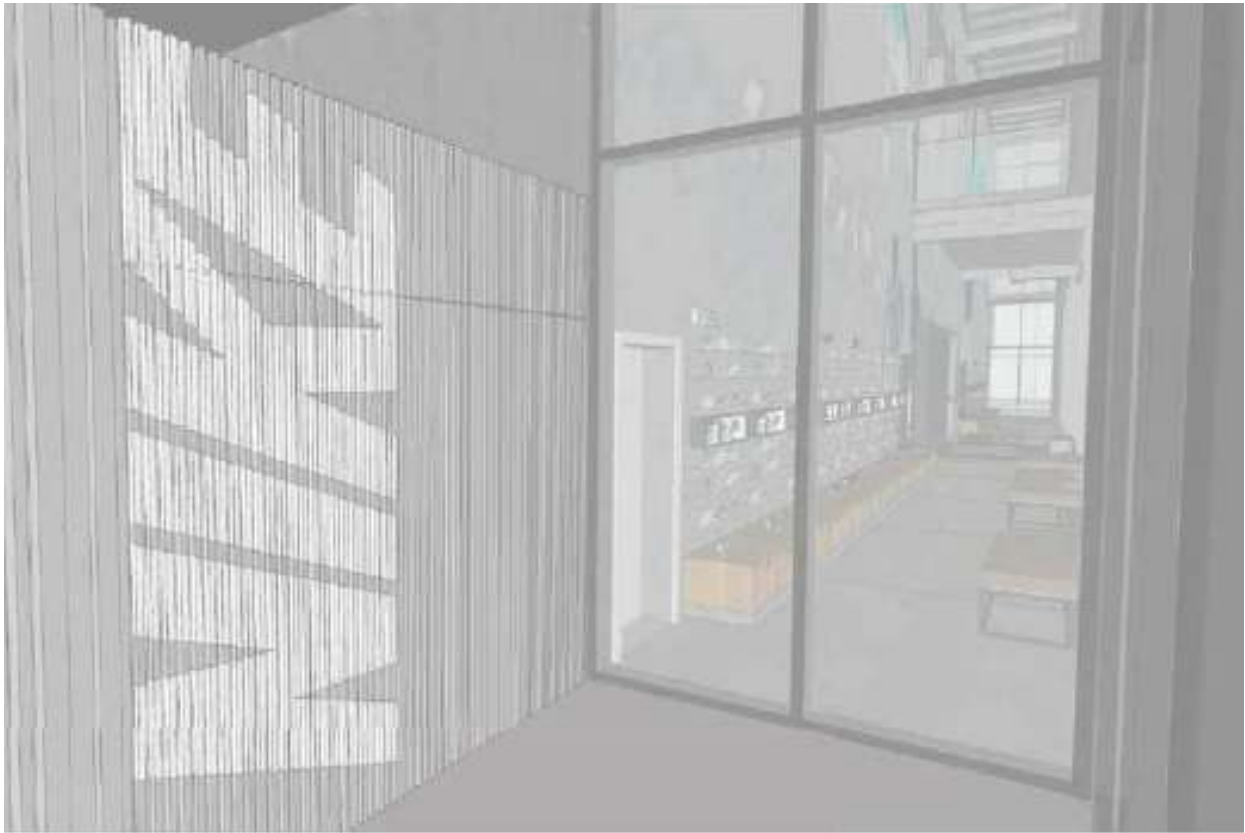
CUSTOM PAINTED DOOR SLATS

Non-Illuminated

9'-8" x 4'-3 3/4" Painted NIKE Letters

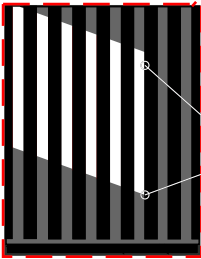
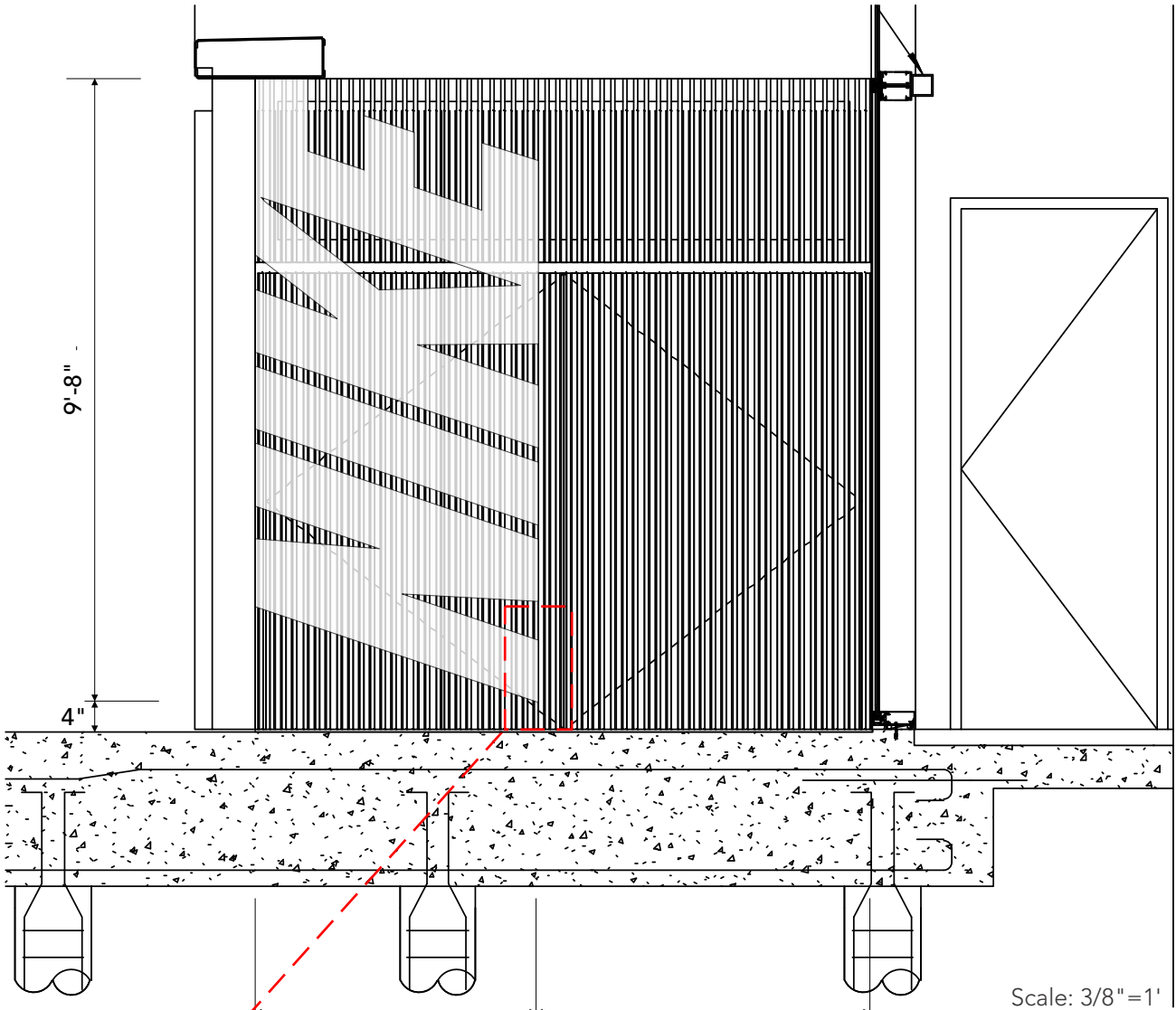
Quantity: One (1)
41.7 Square Feet

Proposed: Storefront



Detail

Letters are Paint Applied to Metal Door Slats
Letters Wrap Around Three Sides of
Channel to Increase Visibility and Legibility



Align Text and Outer
Edge of Channel
Top Left and Bottom Right Corners
of Text Should Align with Outer
Edge of Nearest Channel





1035 Lincoln Road
Miami Beach, FL



