

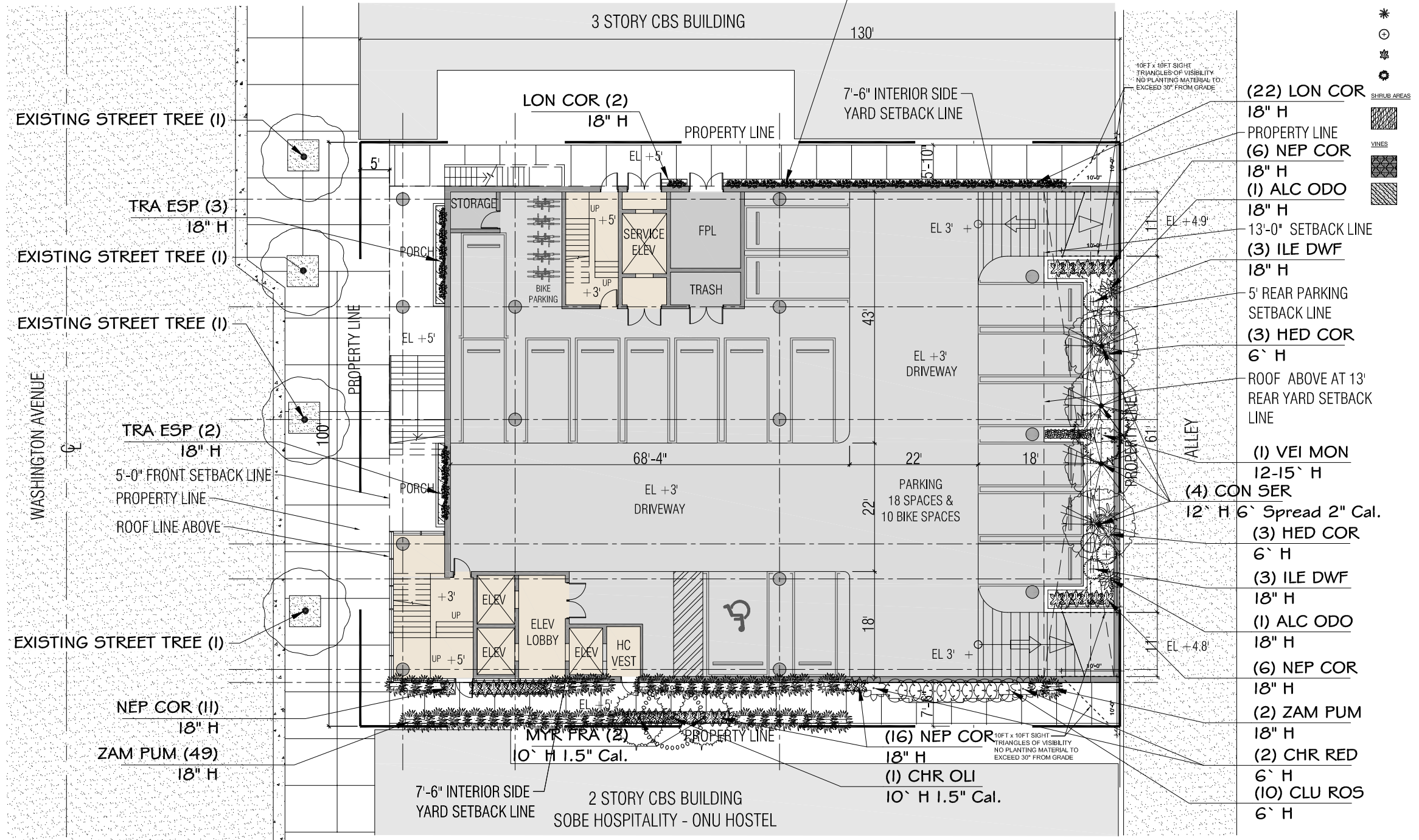
This item has been electronically signed and sealed by Marc P. Bell, RLA, using an SHA authentication code.

Printed copies of this document are not considered signed and sealed and the SHA authentication code must be verified on any electronic copies.

04/08/2022 8:59:40 PM



PLANT SCHEDULE								
TREES	CODE	BOTANICAL NAME	COMMON NAME	SIZE	QTY	DETAIL	REMARKS	
	CHR OLI	Chrysophyllum obovatum	Satinleaf	10' H 1.5" Cal.	1		native	
	CON SER	Conocarpus erectus setosus	Silver Buttonwood	12' H 6' Spread 2" Cal.	4		native	
	MYR FRA	Myrcianthes fragrans	Simpson's Stopper	10' H 1.5" Cal.	2		native	
	VEI MON	Veitchia montgomeryana	Montgomery Palm	12-15' H	1		non native	
SHRUBS	CODE	BOTANICAL NAME	COMMON NAME	SIZE	QTY	DETAIL	REMARKS	
	ALC ODO	Alcantarea odorata	Giant Silver Bromeliad	18" H	2		non native	
	CLU ROS	Clusia rosea 'Pitch Apple'	Balsam Apple	6' H	10		native	
	HED COR	Helechium coronatum	White Ginger	6' H	6		non native	
	ILE DWF	Ilex vomitoria 'Schilling's Dwarf'	Schilling's Dwarf Yaupon Holly	18" H	6		native	
	NEP COR	Nephrolepis cordifolia	Tuberous Sword Fern	18" H	39		native	
	ZAM PUM	Zamia pumila	Coontie Cycad	18" H	51		native	
SHRUB AREAS	CODE	BOTANICAL NAME	COMMON NAME	SIZE	SPACING	QTY	DETAIL	REMARKS
	CHR RED	Chrysobalanus icaco 'Red Tip'	Red Tip Cocoplum	6' H	48" o.c.	2		native
VINES	CODE	BOTANICAL NAME	COMMON NAME	SIZE	SPACING	QTY	DETAIL	REMARKS
	LON COR	Lonicera sempervirens	Trumpet Honeysuckle	18" H	22" o.c.	24		native
	TRA ESP	Trachelospermum jasminoides	Star Jasmine Trellis	18" H	36" o.c.	5		non native



CITY OF MIAMI BEACH
LANDSCAPE LEGEND
 INFORMATION REQUIRED TO BE PERMANENTLY AFFIXED TO PLANS
 Zoning District RPS-3 Lot Area 13,000 sf Acres 0.298 acres

OPEN SPACE	REQUIRED/ALLOWED	PROVIDED
A. Square feet of required Open Space as indicated on site plan: Lot Area = 13,000 s.f. x 0.70 % = 9,100 s.f.	9,100	7,582
B. Square feet of parking lot open space required as indicated on site plan: Number of parking spaces <u>0</u> x 10 s.f. parking space =	0	0
C. Total square feet of landscaped open space required: A+B=	9,100	7,582

LAWN AREA CALCULATION	REQUIRED/ALLOWED	PROVIDED
A. Square feet of landscaped open space required	9,100	7,582
B. Maximum lawn area (sod) permitted= <u>20</u> % x 9,100 s.f.	1820	0

TREES	REQUIRED/ALLOWED	PROVIDED
A. Number of trees required per lot or net lot acre, less existing number of trees meeting minimum requirements= <u>22</u> trees x <u>0.298</u> net lot acres - number of existing trees=	7	7
B. % Natives required: Number of trees provided x 30% =	3	7
C. % Low maintenance / drought and salt tolerant required: Number of trees provided x 50%=	4	7
D. Street Trees (maximum average spacing of 20' o.c.)= <u>100</u> linear feet along street divided by 20'=	5	4
E. Street tree species allowed directly beneath power lines: (maximum average spacing of 20' o.c.): <u>n/a</u> linear feet along street divided by 20'=	n/a	n/a

SHRUBS	REQUIRED/ALLOWED	PROVIDED
A. Number of shrubs required: Sum of lot and street trees required x 12=	144	145
B. % Native shrubs required: Number of shrubs provided x 50%=	72	132

LARGE SHRUBS OR SMALL TREES

REQUIRED/ALLOWED	PROVIDED	
A. Number of large shrubs or small trees required: Number of required shrubs x 10%=	15	18
B. % Native large shrubs or small trees required: Number of large shrubs or small trees provided x 50%=	8	12

Applicant will comply with the Open Space Requirement through payment-in-lieu pursuant to Section 142-704 (b)(4)

ARQUITECTONICA
 2900 Oak Avenue Miami, Florida 33133
 TEL. 305.372.1812 FAX. 305.372.1175
 www.arquitectonica.com

DESIGN HOUSE ASSOCIATES
 1770 NE 205TH TERRACE
 MIAMI, FLORIDA 33179
 P: 786.655.7277
 DESIGNHOUSEASSOCIATES.COM
 MARC@DESIGNHOUSEASSOCIATES.COM

Base Camp 305
 Historic Preservation Submission
 251 Washington Avenue, Miami Beach, FL 33139

DRAWING: SITE LANDSCAPE / HARDSCAPE PLAN
 SCALE: 1:20
 DATE: APRIL 11, 2022

L-1.0



ALL DESIGNS INDICATED IN THESE DRAWINGS ARE PROPERTY OF ARQUITECTONICA INTERNATIONAL CORP. NO COPIES, TRANSMISSIONS, REPRODUCTIONS OR ELECTRONIC MANIPULATION OF ANY PORTION OF THESE DRAWINGS IN THE WHOLE OR IN PART ARE TO BE MADE WITHOUT THE EXPRESS WRITTEN AUTHORIZATION OF ARQUITECTONICA INTERNATIONAL CORP. DESIGN INTENT SHOWN IS SUBJECT TO REVIEW AND APPROVAL OF ALL APPLICABLE LOCAL AND GOVERNMENTAL AUTHORITIES HAVING JURISDICTION. ALL COPYRIGHTS RESERVED © 2021. THE DATA INCLUDED IN THIS STUDY IS CONCEPTUAL IN NATURE AND WILL CONTINUE TO BE MODIFIED THROUGHOUT THE COURSE OF THE PROJECT'S DEVELOPMENT WITH THE EVENTUAL INTEGRATION OF STRUCTURAL, MEP AND LIFE SAFETY SYSTEMS, AS THESE ARE FURTHER REFINED. THE NUMBERS WILL BE ADJUSTED ACCORDINGLY.

This item has been electronically signed and sealed by Marc P. Bell, RLA, using an SHA authentication code.

Printed copies of this document are not considered signed and sealed and the SHA authentication code must be verified on any electronic copies.

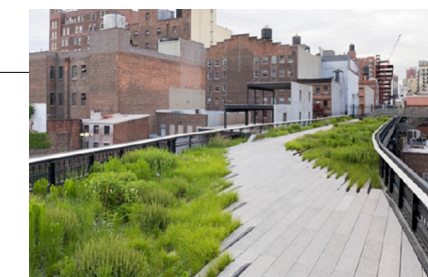
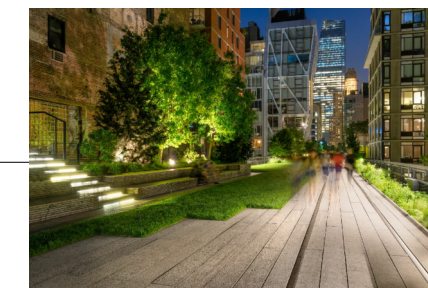
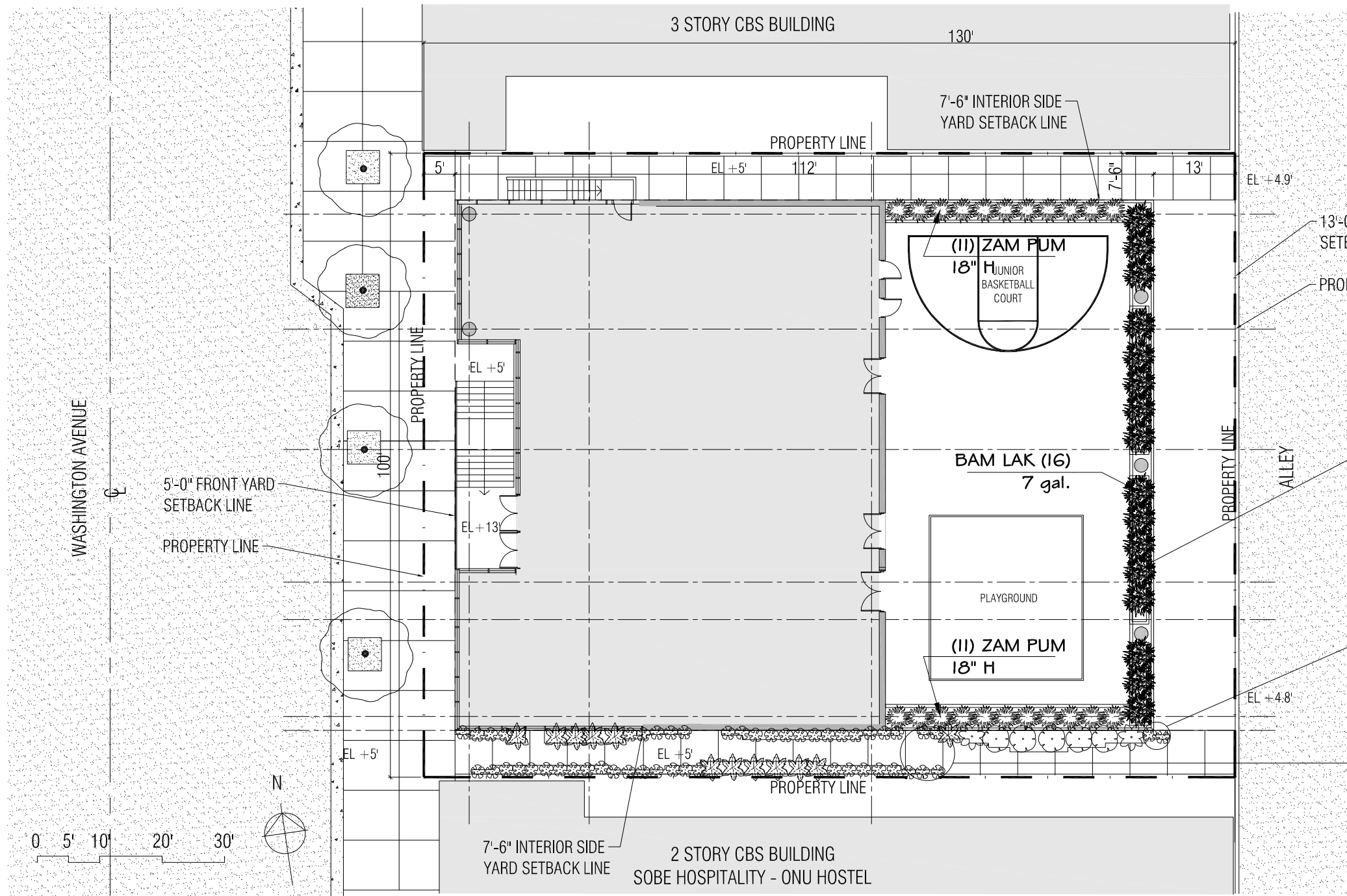
04/08/2022 8:59:40 PM

PLANT SCHEDULE

SHRUBS	CODE	BOTANICAL NAME	COMMON NAME	SIZE	QTY	DETAIL	REMARKS
	BAM LAK	Bambusa lako	Timor Black Bamboo	18" H	16		non native
	ZAM PUM	Zamia pumila	Coontie Cycad	18" H	22		native

N

0 5' 10' 20' 30'



ARQUITECTONICA

2900 Oak Avenue Miami, Florida 33133
 TEL. 305.372.1812 FAX. 305.372.1175
 www.arquitectonica.com

DESIGN HOUSE ASSOCIATES

1770 NE 205TH TERRACE
 MIAMI, FLORIDA 33179
 P: 786.655.7277
 DESIGNHOUSEASSOCIATES.COM
 MARC@DESIGNHOUSEASSOCIATES.COM

Base Camp 305

Historic Preservation Submission

251 Washington Avenue, Miami Beach, Fl 33139

DRAWING: 1ST FLOOR LANDSCAPE PLAN

SCALE: 1:20

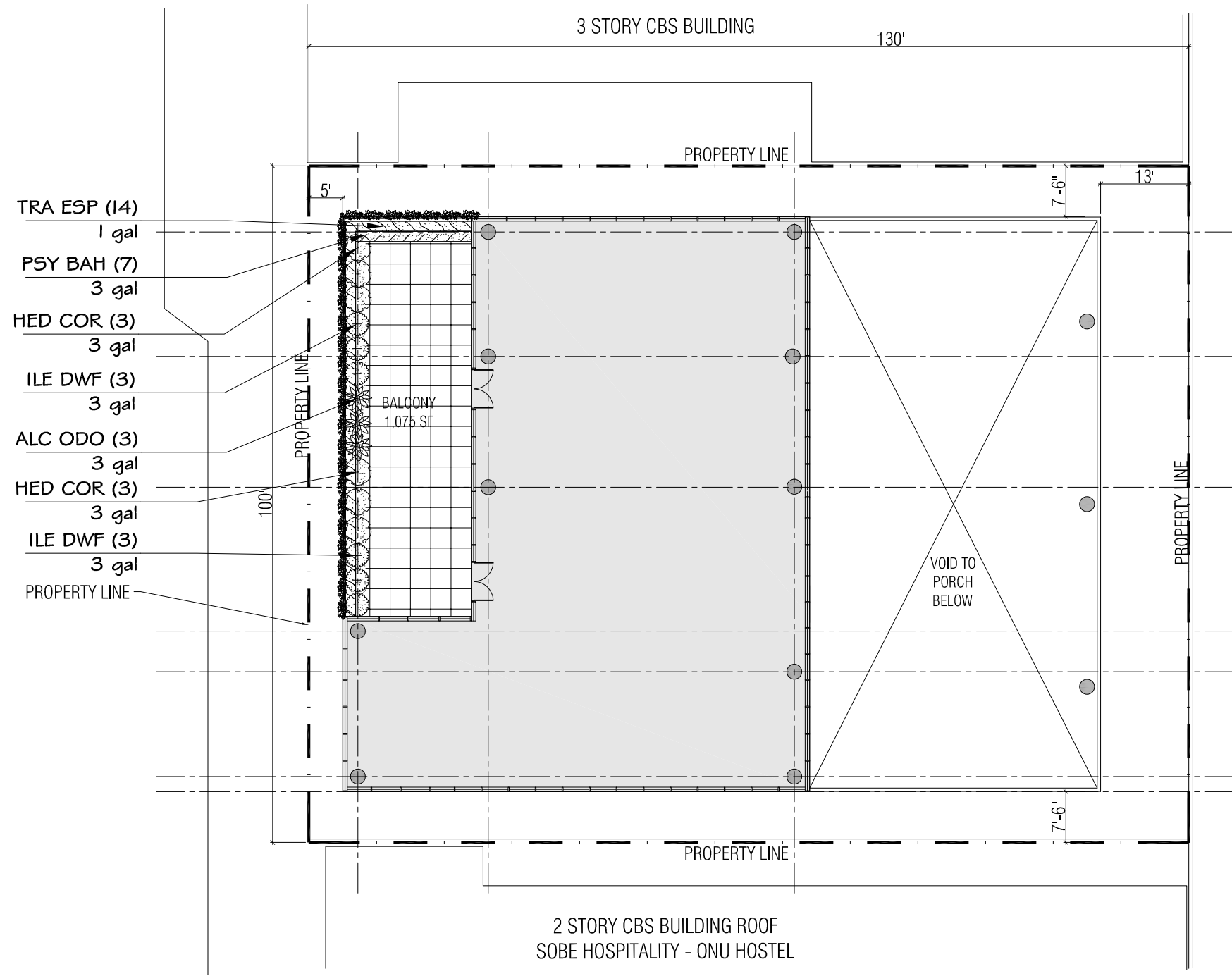
DATE: APRIL 11, 2022

L-2.0

This item has been electronically signed and sealed by Marc P. Bell, RLA, using an SHA authentication code.

Printed copies of this document are not considered signed and sealed and the SHA authentication code must be verified on any electronic copies.

04/08/2022 8:59:40 PM



PLANT SCHEDULE

SHRUBS	CODE	BOTANICAL NAME	COMMON NAME	SIZE	QTY	DETAIL	REMARKS	
	ALC ODO	Alcantarea odorata	Giant Silver Bromeliad	18" H	3		non native	
	HED COR	Hedychium coronarium	White Ginger	6' H	6		non native	
	ILE DWF	Ilex vomitoria 'Schillings Dwarf'	Schillings Dwarf Yaupon Holly	18" H	6		native	
SHRUB AREAS	CODE	BOTANICAL NAME	COMMON NAME	SIZE	SPACING	QTY	DETAIL	REMARKS
	PSY BAH	Psychotria ligustrifolia	Bahama Coffee	3 gal	36" o.c.	3		native
VINES	CODE	BOTANICAL NAME	COMMON NAME	SIZE	SPACING	QTY	DETAIL	REMARKS
	TRA ESP	Trachelospermum jasminoides	Star Jasmine Trellis	1 gal	36" o.c.	14		non native

ARQUITECTONICA
 2900 Oak Avenue Miami, Florida 33133
 TEL. 305.372.1812 FAX. 305.372.1175
 www.arquitectonica.com

DESIGN HOUSE ASSOCIATES
 1770 NE 205TH TERRACE
 MIAMI, FLORIDA 33179
 P: 786.655.7277
 DESIGNHOUSEASSOCIATES.COM
 MARC@DESIGNHOUSEASSOCIATES.COM

Base Camp 305
 Historic Preservation Submission
 251 Washington Avenue, Miami Beach, FL 33139

DRAWING: 2ND FLOOR LANDSCAPE PLAN
 SCALE: 1:20
 DATE: APRIL 11, 2022

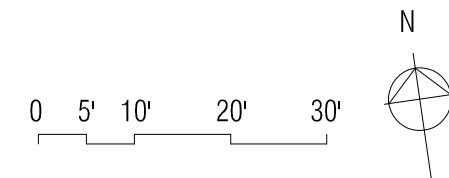
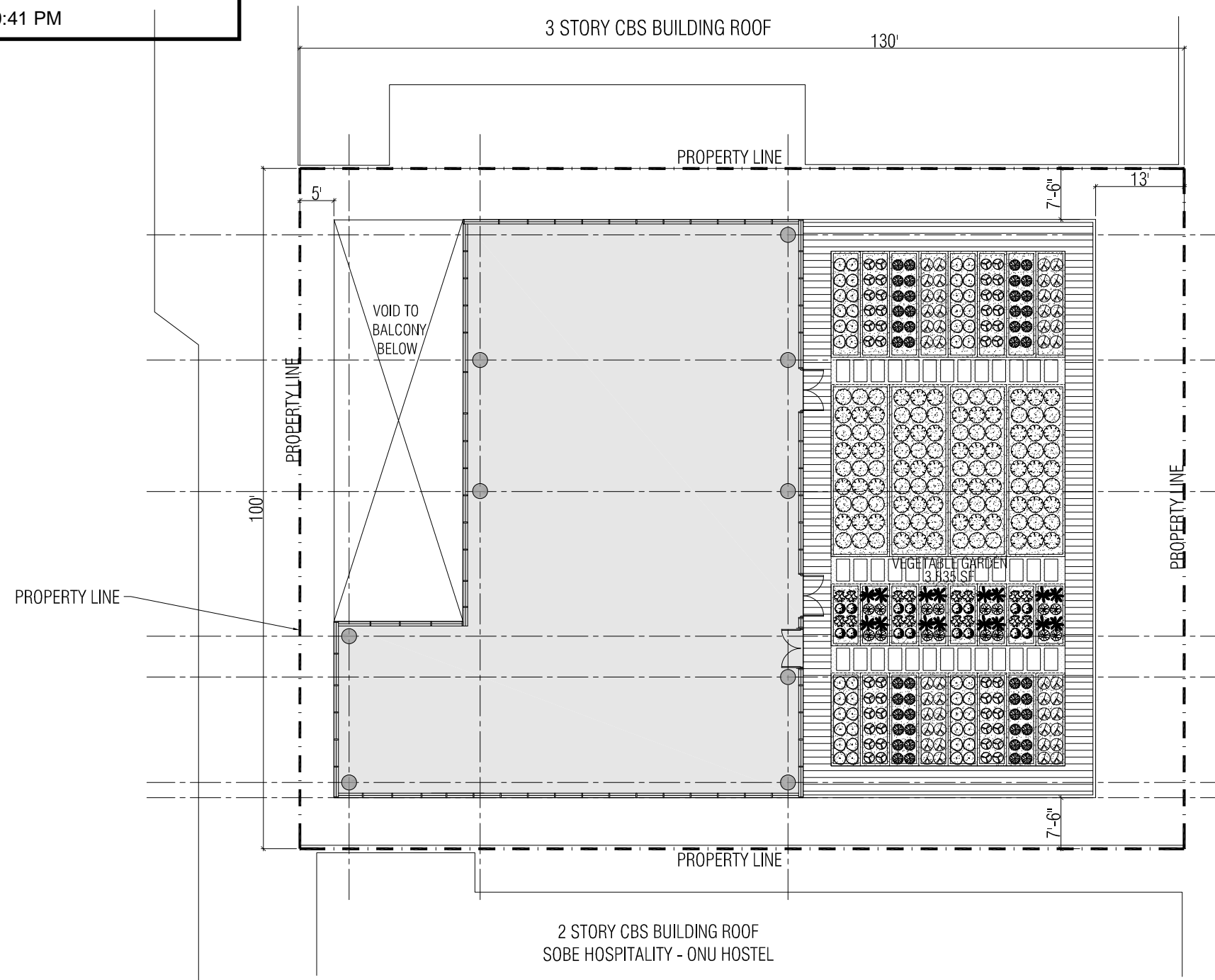
L-3.0

ALL DESIGNS INDICATED IN THESE DRAWINGS ARE PROPERTY OF ARQUITECTONICA INTERNATIONAL CORP. NO COPIES, TRANSMISSIONS, REPRODUCTIONS OR ELECTRONIC MANIPULATION OF ANY PORTION OF THESE DRAWINGS IN THE WHOLE OR IN PART ARE TO BE MADE WITHOUT THE EXPRESS WRITTEN AUTHORIZATION OF ARQUITECTONICA INTERNATIONAL CORP. DESIGN INTENT SHOWN IS SUBJECT TO REVIEW AND APPROVAL OF ALL APPLICABLE LOCAL AND GOVERNMENTAL AUTHORITIES HAVING JURISDICTION. ALL COPYRIGHTS RESERVED © 2021. THE DATA INCLUDED IN THIS STUDY IS CONCEPTUAL IN NATURE AND WILL CONTINUE TO BE MODIFIED THROUGHOUT THE COURSE OF THE PROJECTS DEVELOPMENT WITH THE EVENTUAL INTEGRATION OF STRUCTURAL, MEP AND LIFE SAFETY SYSTEMS, AS THESE ARE FURTHER REFERRED, THE NUMBERS WILL BE ADJUSTED ACCORDINGLY.

This item has been electronically signed and sealed by Marc P. Bell, RLA, using an SHA authentication code.

Printed copies of this document are not considered signed and sealed and the SHA authentication code must be verified on any electronic copies.

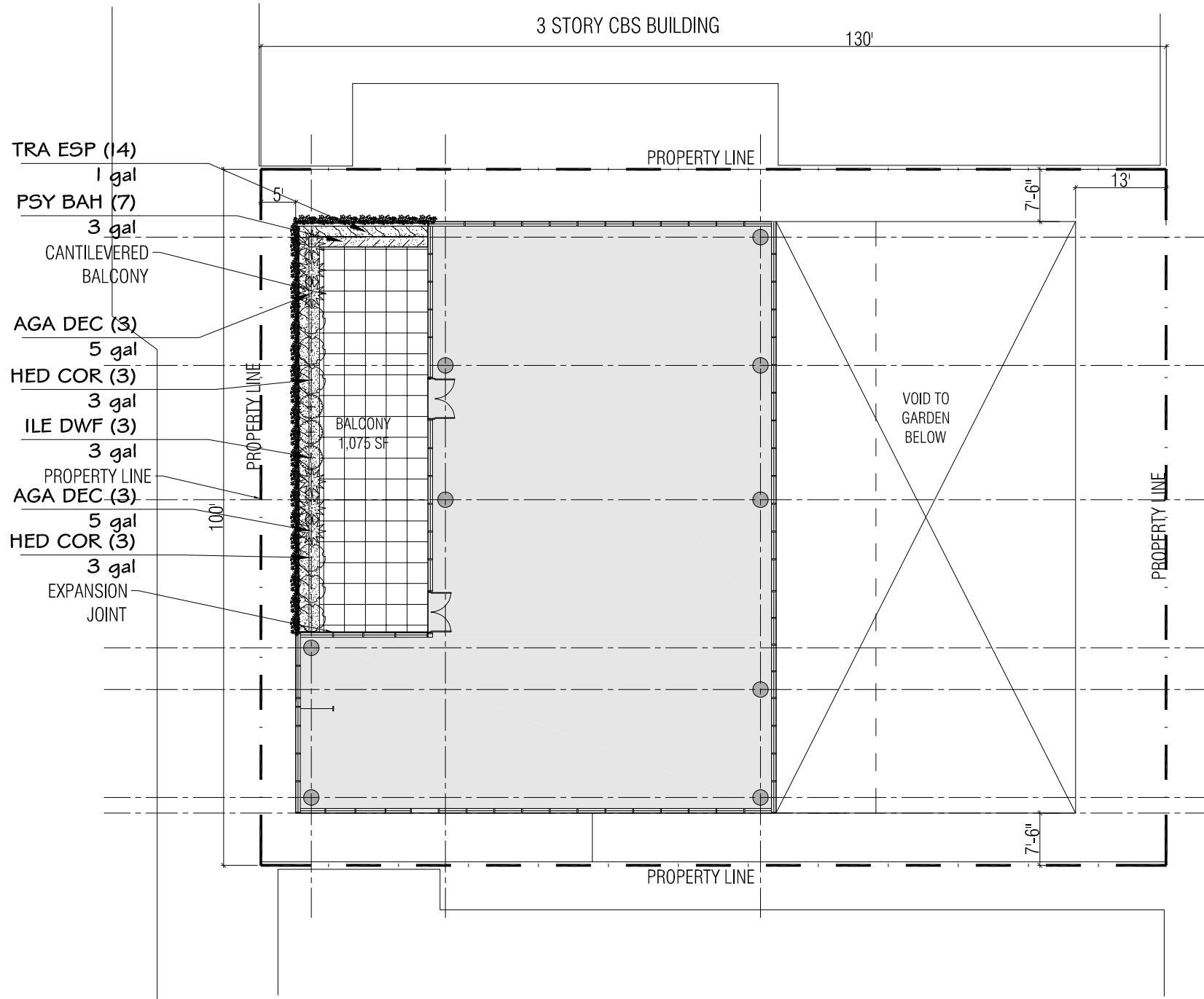
04/08/2022 8:59:41 PM



This item has been electronically signed and sealed by Marc P. Bell, RLA, using an SHA authentication code.

Printed copies of this document are not considered signed and sealed and the SHA authentication code must be verified on any electronic copies.

04/08/2022 8:59:41 PM



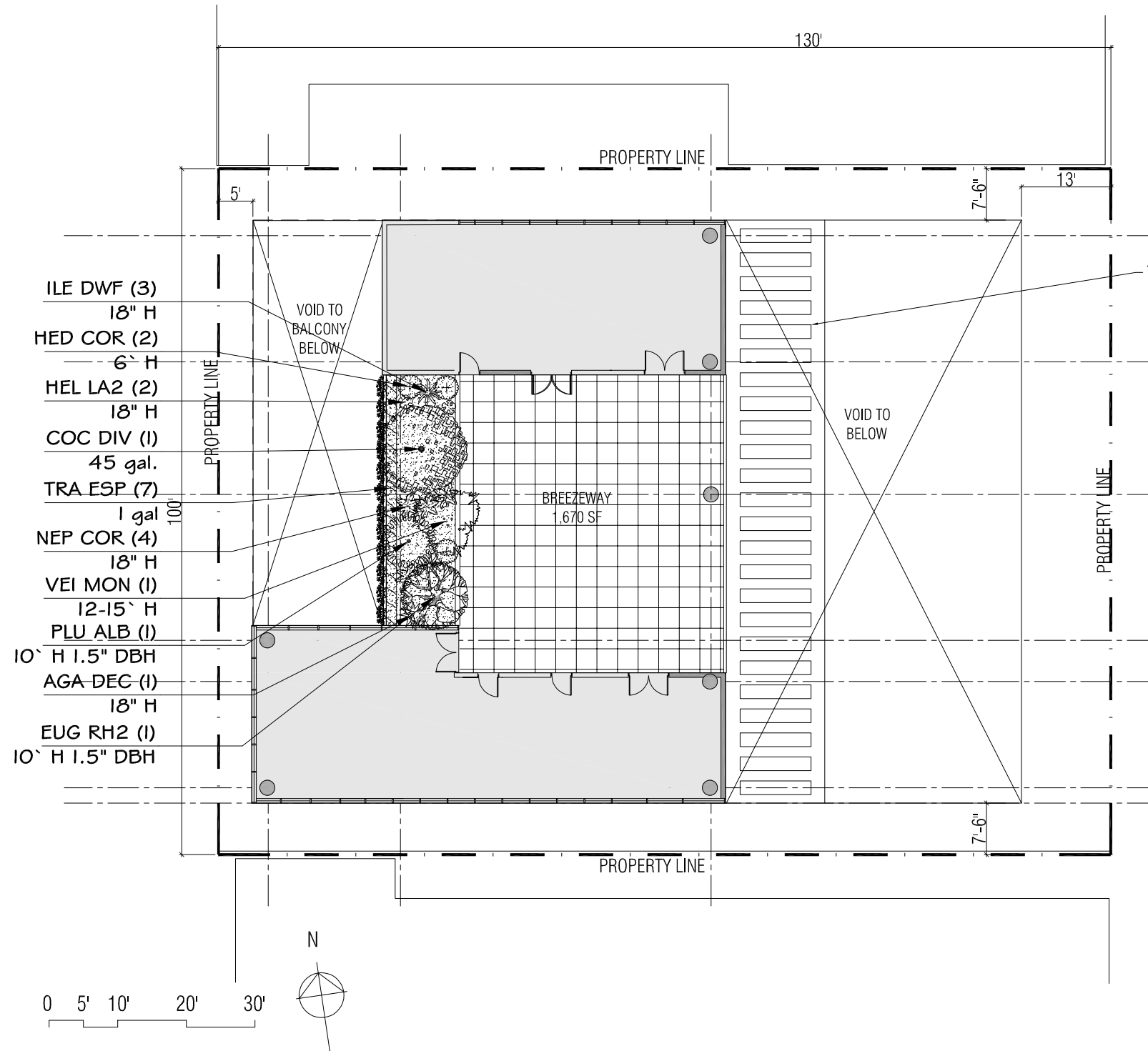
PLANT SCHEDULE

SHRUBS	CODE	BOTANICAL NAME	COMMON NAME	SIZE	QTY	DETAIL	REMARKS	
	AGA DEC	Agave decipiens	False Sisal	18" H	6		non native	
	HED COR	Hedychium coronarium	White Ginger	6' H	6		non native	
	ILE DWF	Ilex vomitoria 'Schillings Dwarf'	Schillings Dwarf Yaupon Holly	18" H	3		native	
SHRUB AREAS	CODE	BOTANICAL NAME	COMMON NAME	SIZE	SPACING	QTY	DETAIL	REMARKS
	PSY BAH	Psychotria ligustrifolia	Bahama Coffee	3 gal	36" o.c.	3		native
VINES	CODE	BOTANICAL NAME	COMMON NAME	SIZE	SPACING	QTY	DETAIL	REMARKS
	TRA ESP	Trachelospermum jasminoides	Star Jasmine Trellis	1 gal	36" o.c.	14		non native

This item has been electronically signed and sealed by Marc P. Bell, RLA, using an SHA authentication code.

Printed copies of this document are not considered signed and sealed and the SHA authentication code must be verified on any electronic copies.

04/08/2022 8:59:41 PM



PLANT SCHEDULE

TREES	CODE	BOTANICAL NAME	COMMON NAME	SIZE	QTY	DETAIL	REMARKS	
	COC DIV	Coccoloba diversifolia	Pigeon Plum	12' H 6" Spread 2" Cal.	1		native	
	EUG RH2	Eugenia rhombea	Red Stopper	10' H 1.5" DBH	1		native	
	PLU ALB	Plumeria alba	White Frangipani	10' H 1.5" DBH	1		non native, flowering tree	
	VEI MON	Veitchia montgomeryana	Montgomery Palm	12-15' H	1		non native	
SHRUBS	CODE	BOTANICAL NAME	COMMON NAME	SIZE	QTY	DETAIL	REMARKS	
	AGA DEC	Agave decipiens	False Sisal	18" H	1		non native	
	HED COR	Hedychium coronarium	White Ginger	6' H	2		non native	
	HEL LA2	Heliconia latispatha	Lobster-Claw	18" H	2		non native	
	ILE DWF	Ilex vomitoria 'Schillings Dwarf'	Schillings Dwarf Yaupon Holly	18" H	3		native	
	NEP COR	Nephrolepis cordifolia	Tuberous Sword Fern	18" H	4		native	
VINES	CODE	BOTANICAL NAME	COMMON NAME	SIZE	SPACING	QTY	DETAIL	REMARKS
	TRA ESP	Trachelospermum jasminoides	Star Jasmine Trellis	1 gal	36" o.c.	7		non native

ARQUITECTONICA
 2900 Oak Avenue Miami, Florida 33133
 TEL. 305.372.1812 FAX. 305.372.1175
 www.arquitectonica.com

DESIGN HOUSE ASSOCIATES
 1770 NE 205TH TERRACE
 MIAMI, FLORIDA 33179
 P: 786.655.7277
 DESIGNHOUSEASSOCIATES.COM
 MARC@DESIGNHOUSEASSOCIATES.COM

Base Camp 305
 Historic Preservation Submission
 251 Washington Avenue, Miami Beach, FL 33139

DRAWING: ROOF LANDSCAPE PLAN
 SCALE: 1:20
 DATE: APRIL 11, 2022

L-6.0

ALL DESIGNS INDICATED IN THESE DRAWINGS ARE PROPERTY OF ARQUITECTONICA INTERNATIONAL CORP. NO COPIES, TRANSMISSIONS, REPRODUCTIONS OR ELECTRONIC MANIPULATION OF ANY PORTION OF THESE DRAWINGS IN THE WHOLE OR IN PART ARE TO BE MADE WITHOUT THE EXPRESS WRITTEN AUTHORIZATION OF ARQUITECTONICA INTERNATIONAL CORP. DESIGN INTENT SHOWN IS SUBJECT TO REVIEW AND APPROVAL OF ALL APPLICABLE LOCAL AND GOVERNMENTAL AUTHORITIES HAVING JURISDICTION. ALL COPYRIGHTS RESERVED © 2021. THE DATA INCLUDED IN THIS STUDY IS CONCEPTUAL IN NATURE AND WILL CONTINUE TO BE MODIFIED THROUGHOUT THE COURSE OF THE PROJECTS DEVELOPMENT WITH THE EVENTUAL INTEGRATION OF STRUCTURAL, MEP AND LIFE SAFETY SYSTEMS. AS THESE ARE FURTHER REFERRED, THE NUMBERS WILL BE ADJUSTED ACCORDINGLY.