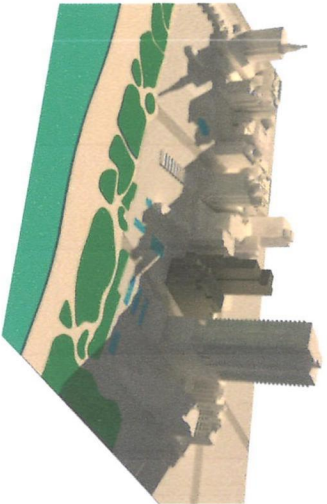


1/2022 Setai

Shadow Study - Winter Solstice, December 21st  
Shore Club Hotel Tower Height: 200' ft.  
Existing building massing shown in dark gray

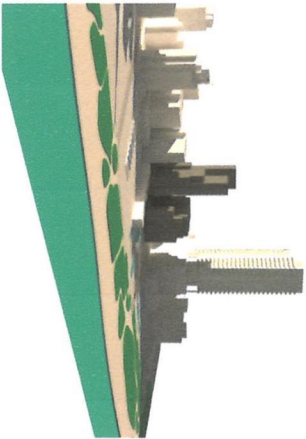
4 p.m



AERIAL PERSPECTIVE

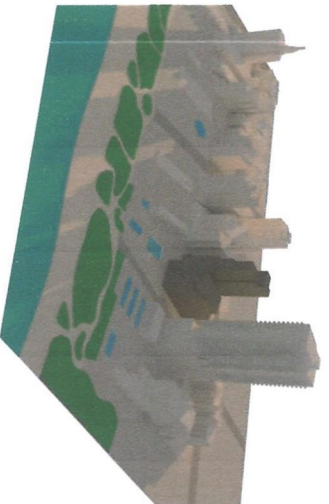


FRONTAL AERIAL PERSPECTIVE

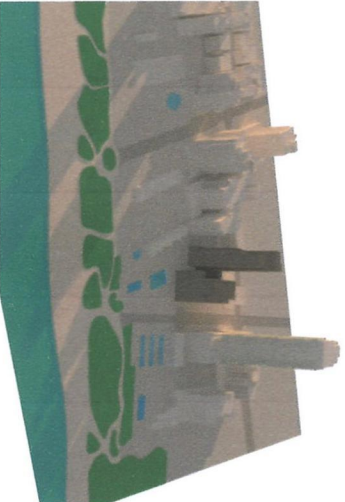


BUILDING HEIGHT PERSPECTIVE

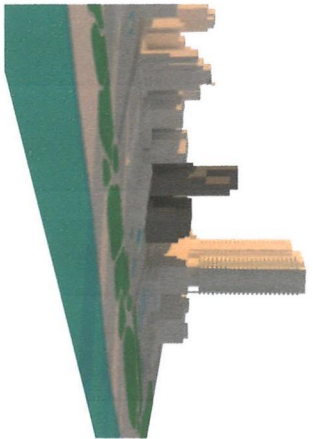
5 p.m



AERIAL PERSPECTIVE



FRONTAL AERIAL PERSPECTIVE



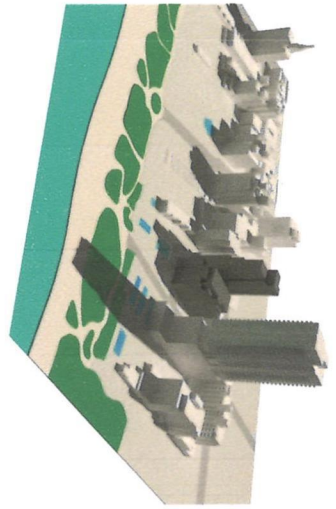
BUILDING HEIGHT PERSPECTIVE

SHORE CLUB HOTEL SHADOW STUDY, MIAMI BEACH, FL

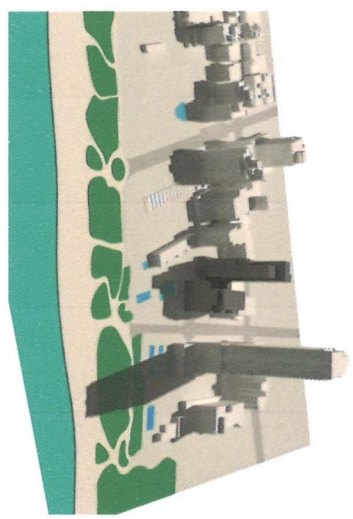
Shadow Study and Modeling of the existing 20-story tower prepared by William Lane Architect, Inc.

**Shadow Study - Summer Solstice, June 20th**  
**Shore Club Hotel Tower Height: 200' ft. + 25'**  
*Existing building massing shown in dark gray*  
*EX 18/20/2017*

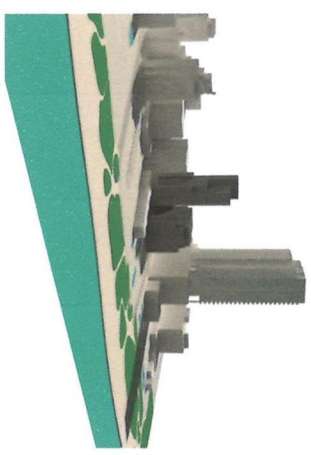
4 p.m



AERIAL PERSPECTIVE

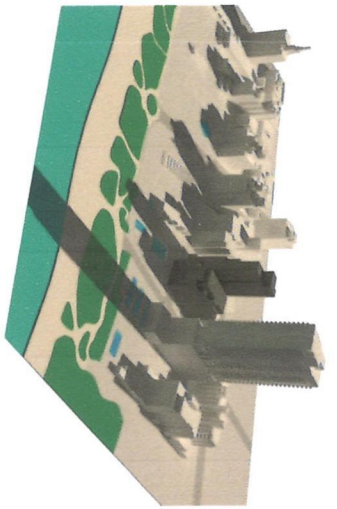


FRONTAL AERIAL PERSPECTIVE



BUILDING HEIGHT PERSPECTIVE

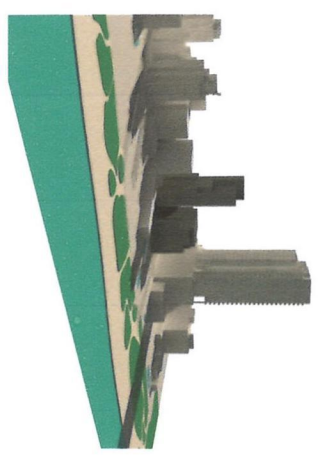
5 p.m



AERIAL PERSPECTIVE



FRONTAL AERIAL PERSPECTIVE



BUILDING HEIGHT PERSPECTIVE

**SHORE CLUB HOTEL SHADOW STUDY, MIAMI BEACH, FL**

Shadow Study and Modeling of the existing 20-story tower prepared by William Lane Architect, Inc.