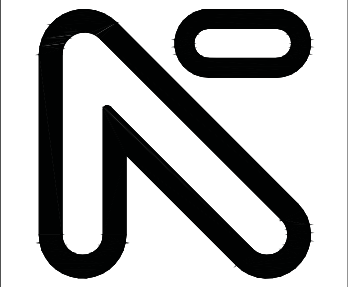


- Thrinax radiata*  
THATCH PALM,  
Typical
- Conocarpus erectus var. Sericeus*  
SILVER BUTTONWOOD, TYPICAL
- Suriana maritima*  
BAY CEDAR
- Acacia seyal*  
RED TRUNK ACACIA

- NATIVE GRASSES AND UNDERSTORY PLANTING
- NEW PLANTING AT ROOFTOP DECK

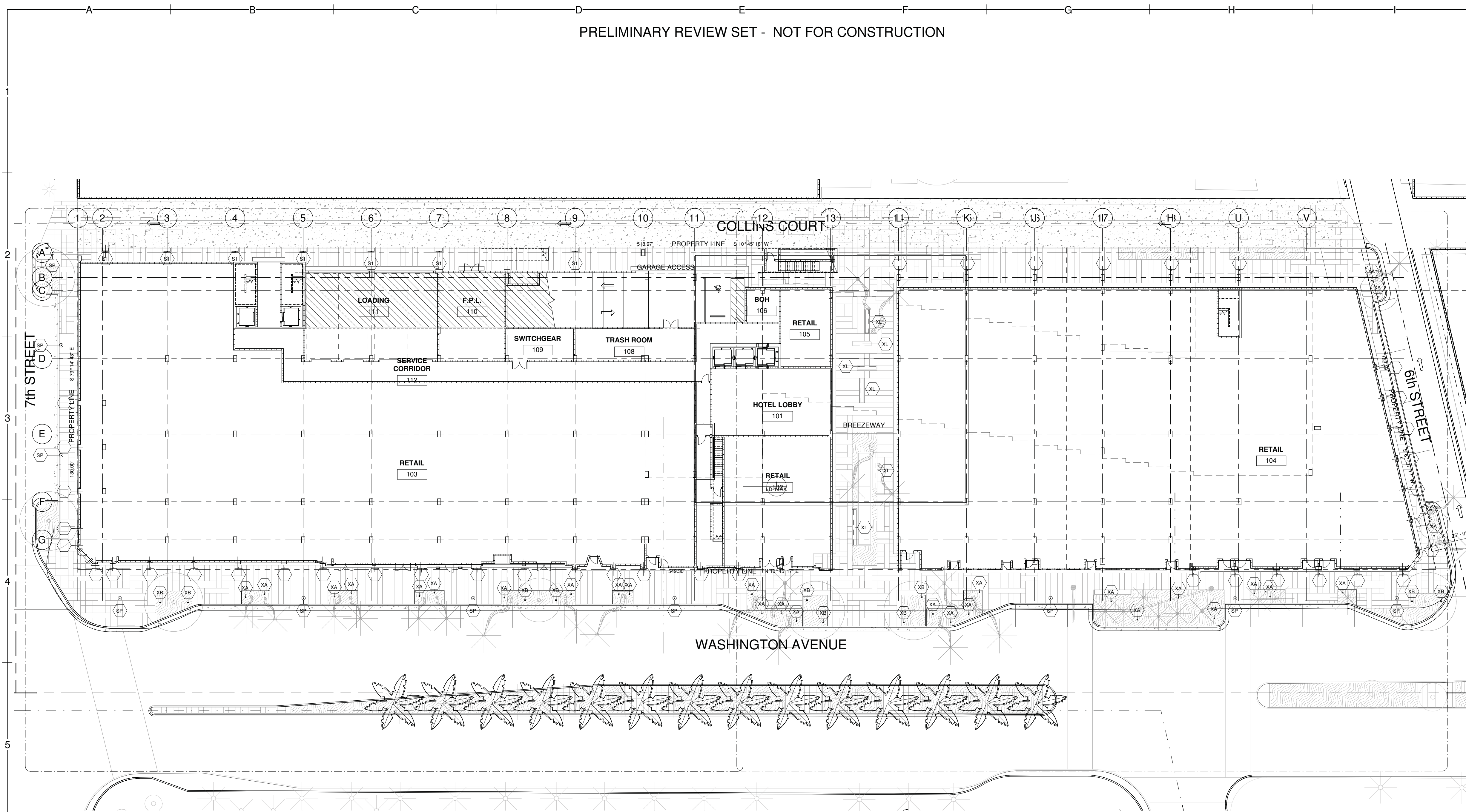


**NICHOLS  
BROSCH  
WURST  
WOLFE  
& ASSOCIATES, INC.**  
Architecture & Planning

161 Almeria Avenue  
Coral Gables, FL 33134  
(305) 448-2006  
(305) 448-2872  
A.C. 000600

OWNER / DEVELOPER:

CONSULTANT:  
O'BRIEN LIGHTING, INC.  
177 BIRDALE AVENUE  
SUITE 1000  
MIAMI, FL 33157  
(305) 274-5117  
WWW.OBRIENLIGHTING.COM



1 LD-1.01  
0100 LEVEL - LIGHTING  
1/16" = 1'-0"

LIGHTING FIXTURE SCHEDULE							
Type Mark	Description	Manufacturer	Model	Catalog Number	Wattage	Voltage	Type Comments
BL	LED Single and Dual Head Bollard	Cooper Lighting	303-B1 and 303-B2			0 V	Bollard
LF	Lumenfacade	Lumenpulse	LOG			120 V	
S1	LED Single & Dual Head Wall Mount Up &-or- Down	Cooper Lighting	303-W1 and 303-W2			0 V	Wall
SG	LED Single Head Sign Light for Wall or Ceiling Mount	Cooper Lighting	303-S1			0 V	Sign & Ceiling
SL	Description	Cooper Industries, Inc.	Model		30 W		
SP	Decorative Post Top Luminaire	Cooper Industries, Inc.	Generation Series LED		0 W		
XA	Lumenbeam - Small				9 W		
XB	Lumenbeam - Medium				9 W		
XL	Exterior Rated Linear LED strip	GM Lighting	GM-LTG-EX-24 VDC		16 W		Remote 24VDC driver

WASHINGTON AVE  
MIAMI BEACH, FL

SUBMITTAL HISTORY:  
06-12-15

Revisions

#	Description	Date

14040

GROUND FLOOR  
LIGHTING PLAN

LD-1.01



Morris Adjmi Architects  
www.ma.com  
O'Brien Lighting Inc

Washington Squared LLC  
Ken Fulk

Raymond Jungles Inc.  
Nichols Brosch Wurst Wolfe & Associates

601-685 Washington Ave.  
Miami Beach, FL

**Ground Floor Lighting Plan**  
Planning Board Final Submittal / 2 March 2016

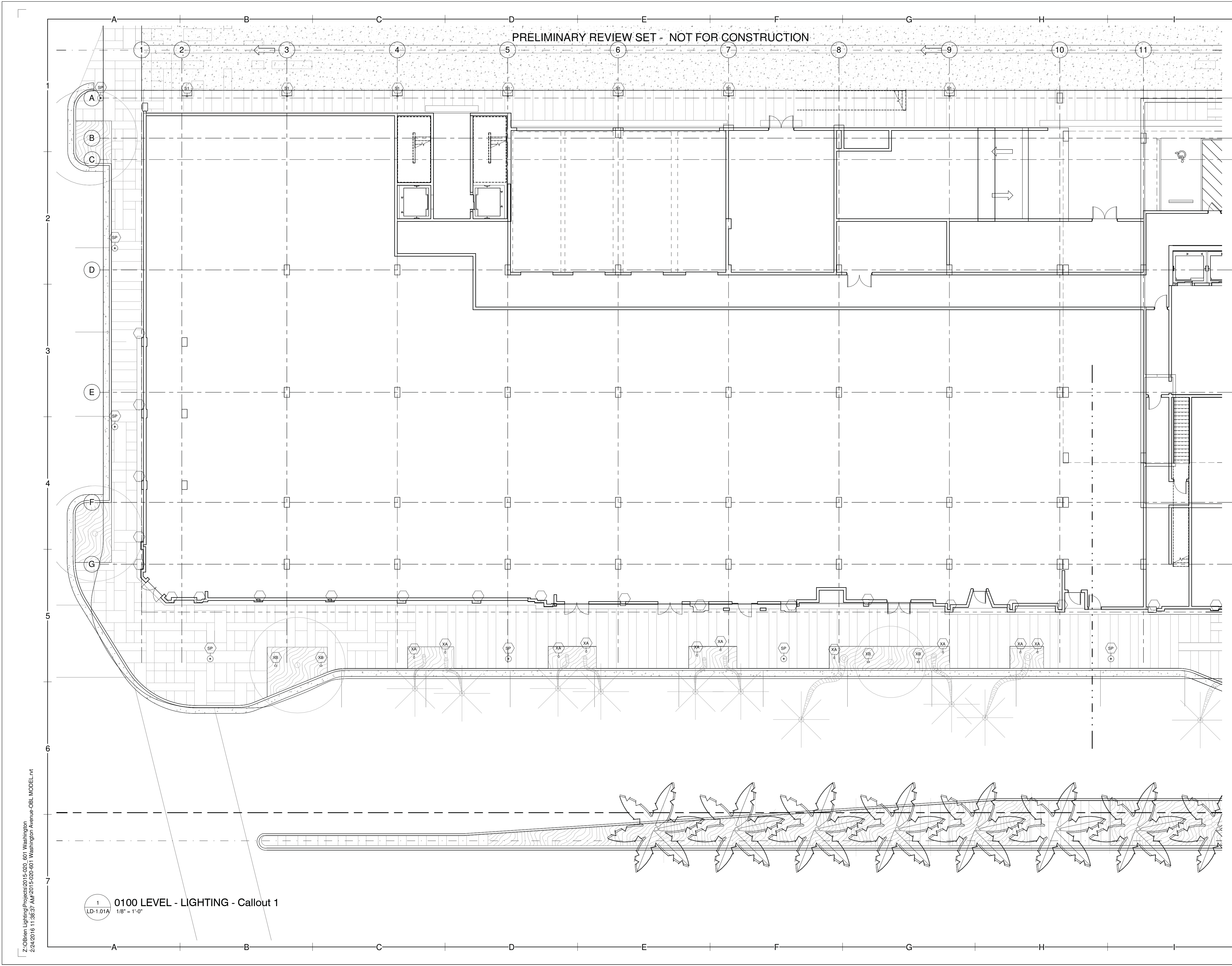


LD-1.01

Z:\OBrien Lighting\Projects\2015\020-601 Washington 2/24/2016 11:38:34 AM\2015-020-601 Washington Avenue-CBL MODEL.rvt



THIS PAGE HAS INTENTIONALLY BEEN LEFT BLANK



PRELIMINARY REVIEW SET - NOT FOR CONSTRUCTION

1  
LD-1.01A  
1/8" = 1'-0"



**NICHOLS  
BROSCH  
WURST  
WOLFE  
& ASSOCIATES, INC.**  
Architecture & Planning

161 Almeria Avenue  
Coral Gables, FL 33134  
(305) 448-0206  
(305) 448-0872  
A.L.C. 000660

OWNER / DEVELOPER:

CONSULTANT:  
O'BRIEN LIGHTING, INC.  
177 FIDELITY AVENUE  
MIAMI, FL 33139  
(305) 274-5417  
www.obrienlighting.com

WASHINGTON AVE  
MIAMI BEACH, FL

SUBMITTAL HISTORY:  
06-12-15

Revisions

#	Description	Date

14040

ENLARGED - NORTH

LD-1.01A



Morris Adjmi Architects  
www.ma.com  
O'Brien Lighting Inc

Washington Squared LLC  
Ken Fulk

Raymond Jungles Inc.  
Nichols Brosch Wurst Wolfe & Associates

601-685 Washington Ave.  
Miami Beach, FL

Level 1 Lighting Plan - Enlarged - North

Planning Board Final Submittal / 2 March 2016

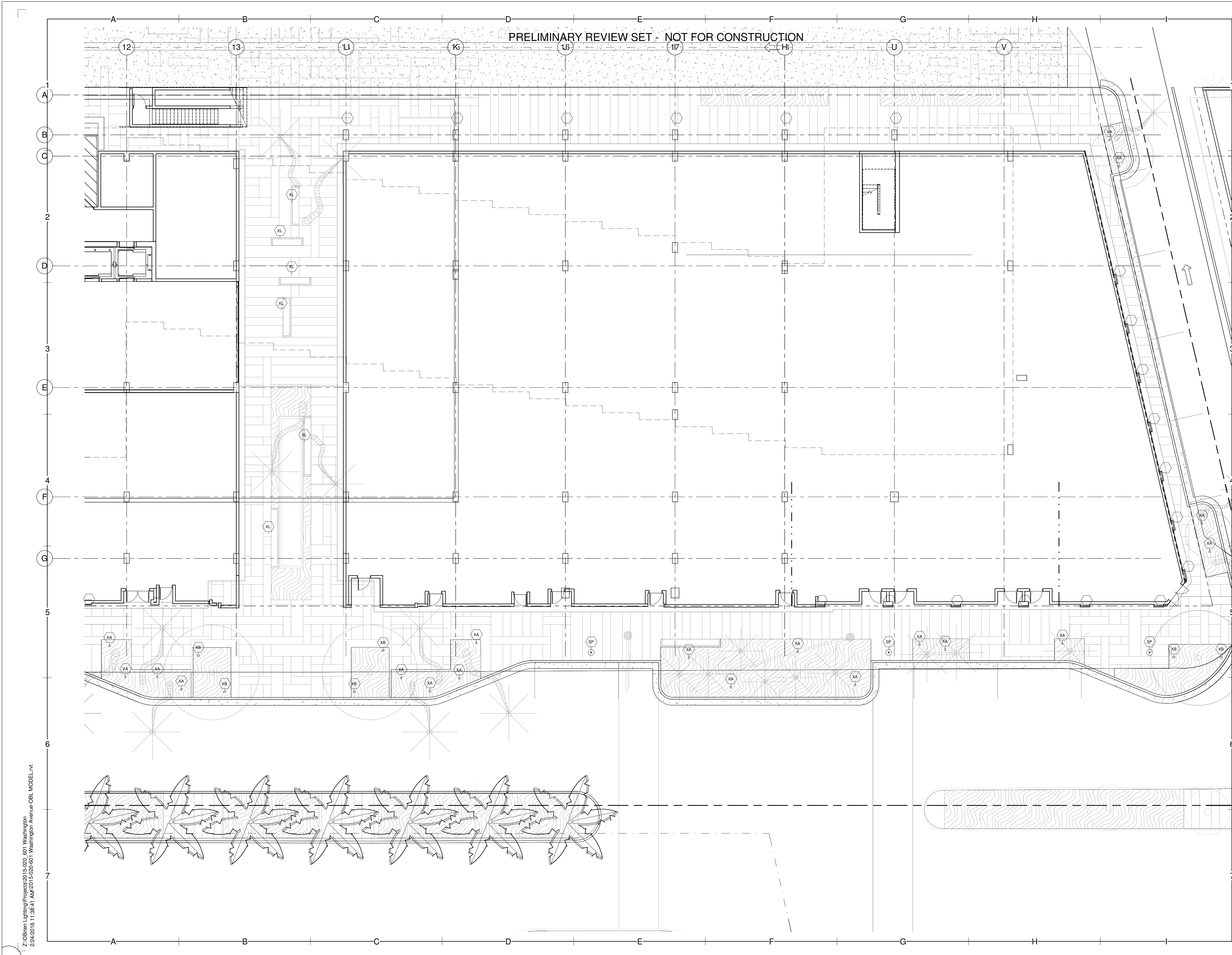
**APPROVED**

LD-1.01A

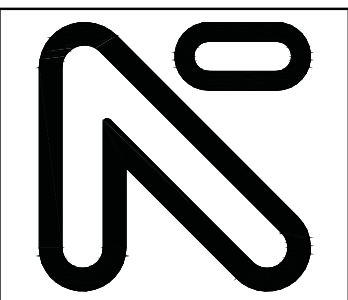
Z:\OBrien Lighting\Projects\2015\020\_601 Washington  
2/24/2016 11:38:37 AM\2015-020-601 Washington Avenue-CBL MODEL.rvt



THIS PAGE HAS INTENTIONALLY BEEN LEFT BLANK



PRELIMINARY REVIEW SET - NOT FOR CONSTRUCTION



**NICHOLS  
BROSCH  
WURST  
WOLFE  
& ASSOCIATES, INC.**  
Architecture & Planning  
161 Almeria Avenue  
Coral Gables, FL 33134  
(305) 448-0206  
(305) 448-0872  
A.C. 000690

OWNER / DEVELOPER:

CONSULTANT:  
O'BRIEN LIGHTING, INC.  
177 BIRDELL AVENUE  
SUITE 1000  
MIAMI, FL 33131  
(305) 274-5417  
www.obrienlighting.com

**WASHINGTON AVE**  
MIAMI BEACH, FL

SUBMITTAL HISTORY:  
06-12-15

Revisions

#	Description	Date

14040  
ENLARGED - SOUTH  
LD-1.01B

Z:\OBrien\Lighting\Projects\2015\020\_601\_Washington  
2/24/2016 11:38:41 AM 2015-020-601\_Washington Avenue-CBL\_MODEL.rvt

**MA** Morris Adjmi Architects  
www.ma.com

Washington Squared LLC  
Ken Fulk

Raymond Jungles Inc.  
Nichols Brosch Wurst Wolfe & Associates

601-685 Washington Ave.  
Miami Beach, FL

**Level 1 Lighting Plan - Enlarged - South**  
Planning Board Final Submittal / 2 March 2016

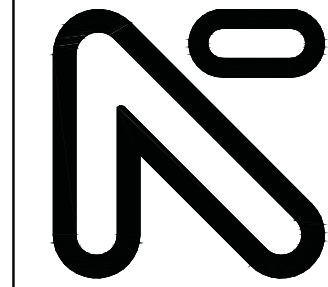
**APPROVED**

LD-1.01B



THIS PAGE HAS INTENTIONALLY BEEN LEFT BLANK



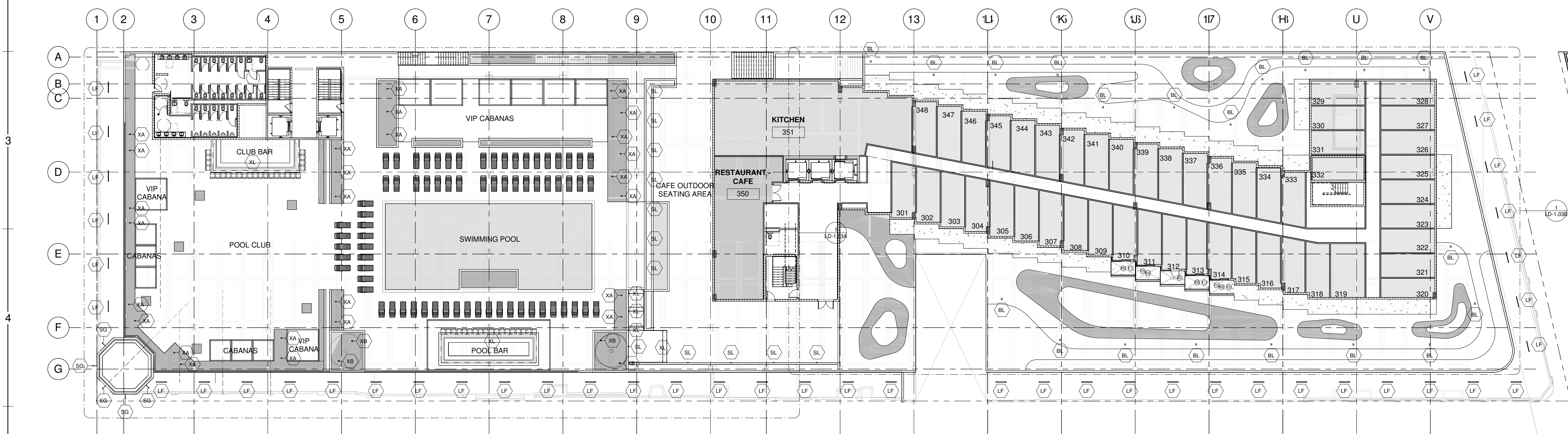


**NICHOLS  
BROSCH  
WURST  
WOLFE**  
& ASSOCIATES, INC.  
Architecture & Planning

161 Almeria Avenue  
Coral Gables, FL 33134  
(305) 443-2006  
(305) 446-2872  
A.C. 000600

OWNER / DEVELOPER:

CONSULTANT:  
O'BRIEN LIGHTING, INC.  
177 BIRDALE AVENUE  
SUITE 1000  
MIAMI, FL 33131  
TEL: 305-274-5117  
WWW.OBRIENLIGHTING.COM



1 0300 LEVEL - LIGHTING  
LD-1.03 1/16" = 1'-0"

LIGHTING FIXTURE SCHEDULE							
Type Mark	Description	Manufacturer	Model	Catalog Number	Wattage	Voltage	Type Comments
BL	LED Single and Dual Head Bollard	Cooper Lighting	303-B1 and 303-B2			0 V	Bollard
LF	Lumenfacade	Lumenpulse	LOG			120 V	
S1	LED Single & Dual Head Wall Mount Up & or Down	Cooper Lighting	303-W1 and 303-W2			0 V	Wall
SG	LED Single Head Sign Light for Wall or Ceiling Mount	Cooper Lighting	303-S1			0 V	Sign & Ceiling
SL	Description	Cooper Industries, Inc.	Model		30 W		
SP	Decorative Post Top Luminaire	Cooper Industries, Inc.	Generation Series LED		0 W		
XA	Lumenbeam - Small				9 W		
XB	Lumenbeam - Medium				9 W		
XL	Exterior Rated Linear LED strip	GM Lighting	GM-LTG-EX-24 VDC		16 W		Remote 24VDC driver

WASHINGTON AVE  
MIAMI BEACH, FL

SUBMITTAL HISTORY:  
06-12-15

Revisions

#	Description	Date

14040

3RD LEVEL LIGHTING

LD-1.03

Z:\OBrien Lighting\Projects\2015\020\_601\_Washington 2/24/2016 11:41:36 AM\2015-020-601\_Washington Avenue-0BL MODEL.rvt



Morris Adjmi Architects  
www.ma.com  
O'Brien Lighting Inc

Washington Squared LLC  
Ken Fulk

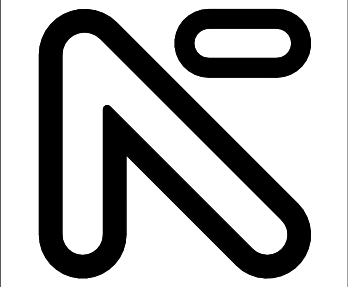
Raymond Jungles Inc.  
Nichols Brosch Wurst Wolfe & Associates

601-685 Washington Ave.  
Miami Beach, FL

**Level 3 Lighting Plan**  
Planning Board Final Submittal / 2 March 2016

**APPROVED**

LD-1.03



**NICHOLS  
BROSCH  
WURST  
WOLFE**  
& ASSOCIATES, INC.  
Architecture & Planning  
161 Almeria Avenue  
Coral Gables, FL 33134  
(305) 443-5296  
(305) 446-2872  
FAC: 300660

OWNER / DEVELOPER:  
  
CONSULTANT:  
O'BRIEN LIGHTING, INC.  
1175 BUCKLESHAW BLVD  
SUITE 1000  
MIAMI, FL 33131  
TEL: 305.224.8111  
WWW.OBRIENLIGHTING.COM

WASHINGTON AVE  
MIAMI BEACH, FL

SUBMITTAL HISTORY:  
11-11-16

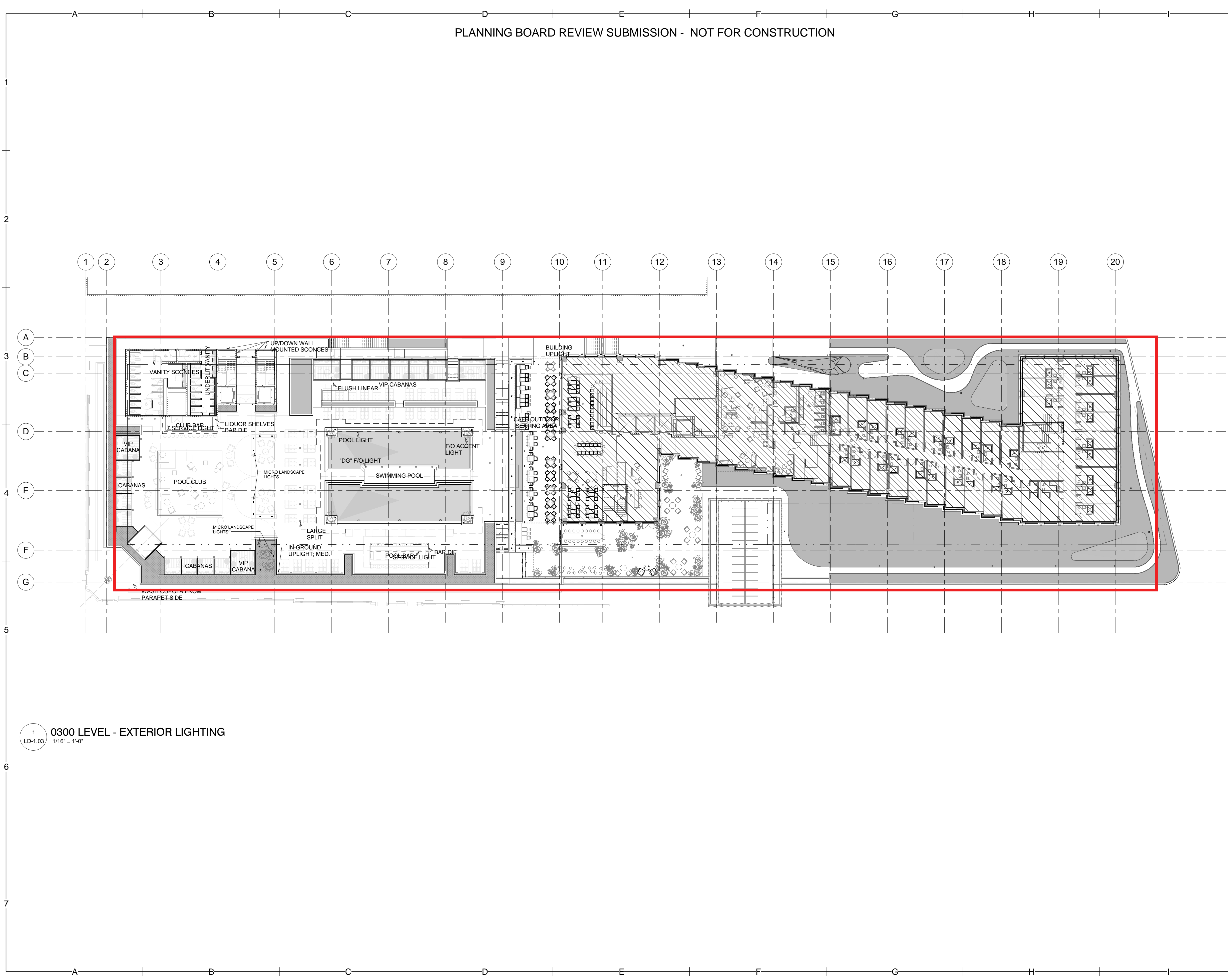
Revisions

#	Description	Date

14040

3RD LEVEL EXTERIOR LIGHTING

LD-1.03



1 0300 LEVEL - EXTERIOR LIGHTING  
LD-1.03 1/16" = 1'-0"

Z:\OBrien Lighting\Archives\Michael P.'s Files\REV\11/2016\2016011111\_601 11/11/2016 5:20:06 PM\BL PEISEL COPY.rvt



Morris Adjmi Architects  
www.ma.com  
O'Brien Lighting Inc

Washington Squared LLC  
Ken Fulk

Raymond Jungles Inc.  
Nichols Brosch Wurst Wolfe & Associates

601-685 Washington Ave.  
Miami Beach, FL

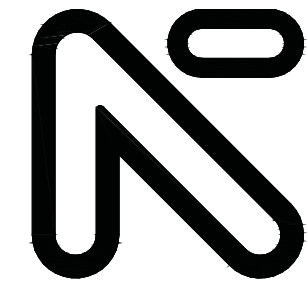
### Level 3 Lighting Plan

Planning Board Modification - Final Submittal / 28 November 2016

**REVISED**

LD-1.03

PRELIMINARY REVIEW SET - NOT FOR CONSTRUCTION



**NICHOLS  
BROSCH  
WURST  
WOLFE  
& ASSOCIATES, INC.**  
Architecture & Planning  
161 Almeria Avenue  
Coral Gables, FL 33134  
(305) 448-0206  
(305) 448-2872  
F.A.C. 000660

OWNER / DEVELOPER:

CONSULTANT:  
**O'BRIEN LIGHTING, INC.**  
177 BURGESS AVENUE  
SUITE 1000  
MIAMI, FL 33131  
TEL: 305.274.5417  
WWW.OBRIENLIGHTING.COM

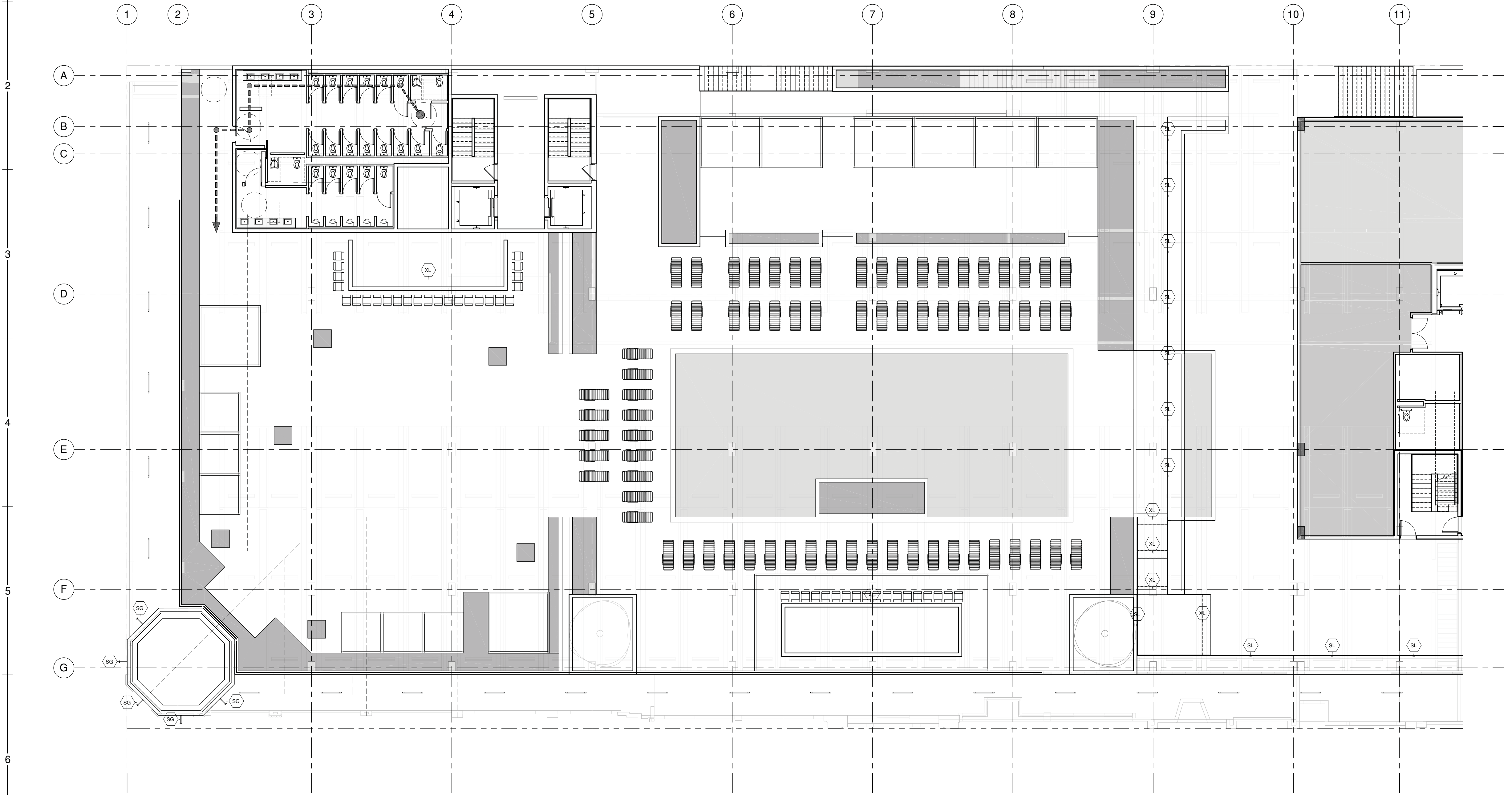
WASHINGTON AVE  
MIAMI BEACH, FL

SUBMITTAL HISTORY:

06-12-15

Revisions

#	Description	Date



1 0300 LEVEL - LIGHTING - Callout 1  
LD-1.03A 1/8" = 1'-0"

Z:\OBrien Lighting\Projects\2015\020 601 Washington  
2/24/2016 11:46:01 AM\2015-020-601 Washington Avenue-CBL MODEL.rvt



Morris Adjmi Architects  
www.ma.com  
O'Brien Lighting Inc

Washington Squared LLC  
Ken Fulk

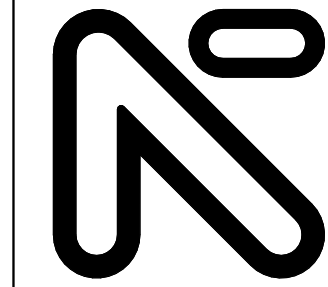
Raymond Jungles Inc.  
Nichols Brosch Wurst Wolfe & Associates

601-685 Washington Ave.  
Miami Beach, FL

**Level 3 Lighting Plan - Enlarged - North**  
Planning Board Final Submittal / 2 March 2016



LD-1.03A



**NICHOLS  
BROSCH  
WURST  
WOLFE**  
& ASSOCIATES, INC.  
Architecture & Planning  
161 Almeria Avenue  
Coral Gables, FL 33134  
(305) 443-5206  
(305) 446-2872  
FAC: 300690

OWNER / DEVELOPER:

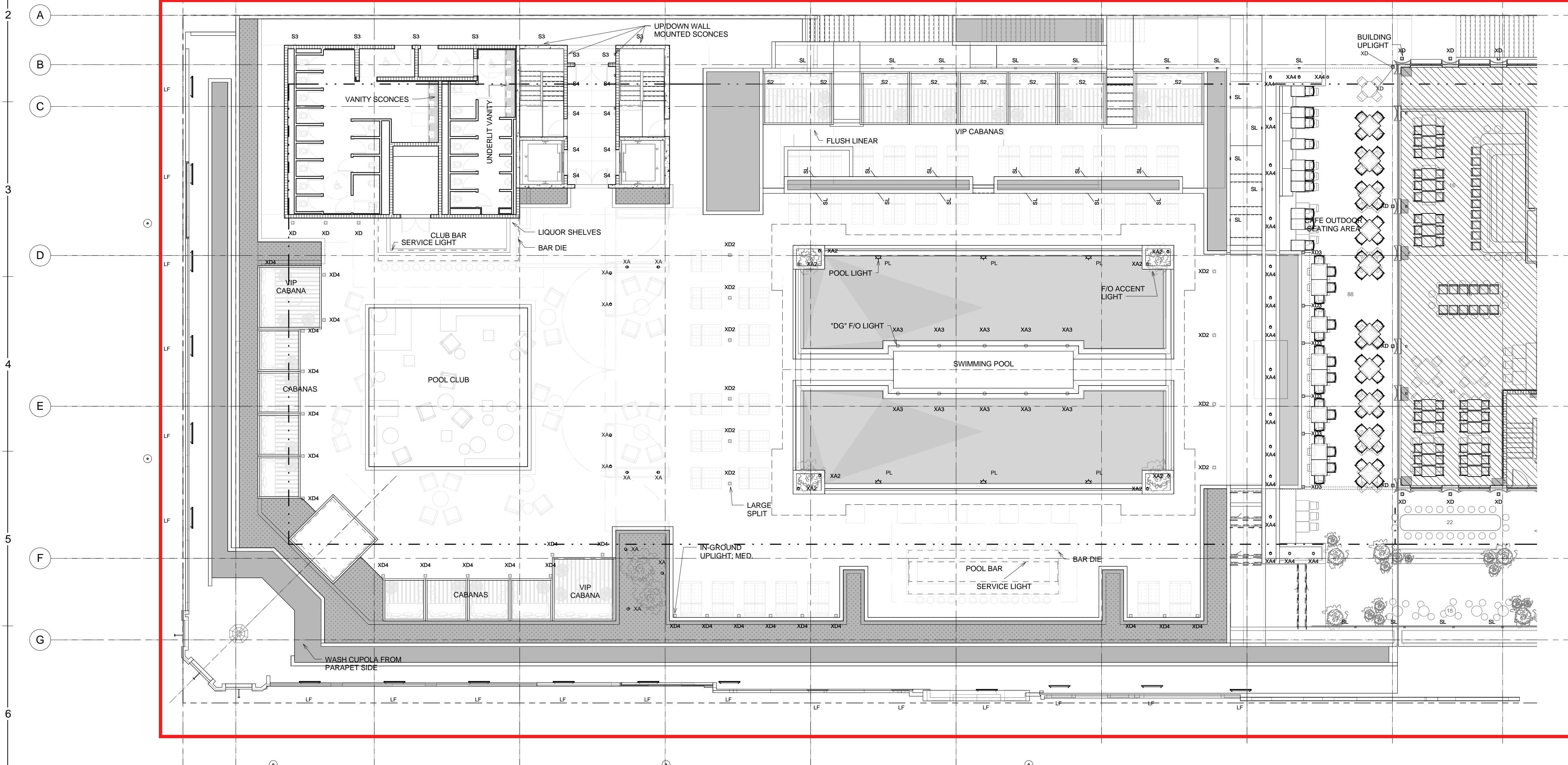
CONSULTANT:  
O'BRIEN LIGHTING, INC.  
1175 BIRDELL AVENUE  
SUITE 1000  
MIAMI, FL 33151  
TEL: 305.224.8100  
WWW.OBRIENLIGHTING.COM

WASHINGTON AVE  
MIAMI BEACH, FL

SUBMITTAL HISTORY:  
11-11-16

Revisions  
# Description Date

14040  
3RD LEVEL EXTERIOR  
LIGHTING NORTH  
LD-1.03A



1 0300 LEVEL - EXTERIOR LIGHTING NORTH  
LD-1.03A 1/8" = 1'-0"

Z:\OBrien Lighting\Archives\Michael P.'s Files\REV\11/2016\11/2016\1111\_601\_11/11/2016 5:20:23 PM\BL\_PEBSEL\_COPY.rvt



Morris Adjmi Architects  
www.ma.com  
O'Brien Lighting Inc

Washington Squared LLC  
Ken Fulk

Raymond Jungles Inc.  
Nichols Brosch Wurst Wolfe & Associates

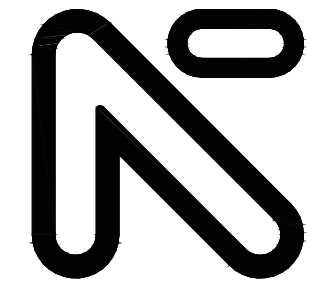
601-685 Washington Ave.  
Miami Beach, FL

**Level 3 Lighting Plan - Enlarged - North**  
Planning Board Modification - Final Submittal / 28 November 2016

**REVISED**

LD-1.03A

PRELIMINARY REVIEW SET - NOT FOR CONSTRUCTION



NICHOLS  
BROSCH  
WURST  
WOLFE  
& ASSOCIATES, INC.  
Architecture & Planning

161 Almeria Avenue  
Coral Gables, FL 33134  
(305) 448-0206  
(305) 448-2872  
A.C. 000600

OWNER / DEVELOPER:

CONSULTANT:  
O'BRIEN LIGHTING, INC.  
177 BIRDALE AVENUE  
SUITE 1000  
MIAMI, FL 33133  
(305) 274-5417  
www.obrienlighting.com

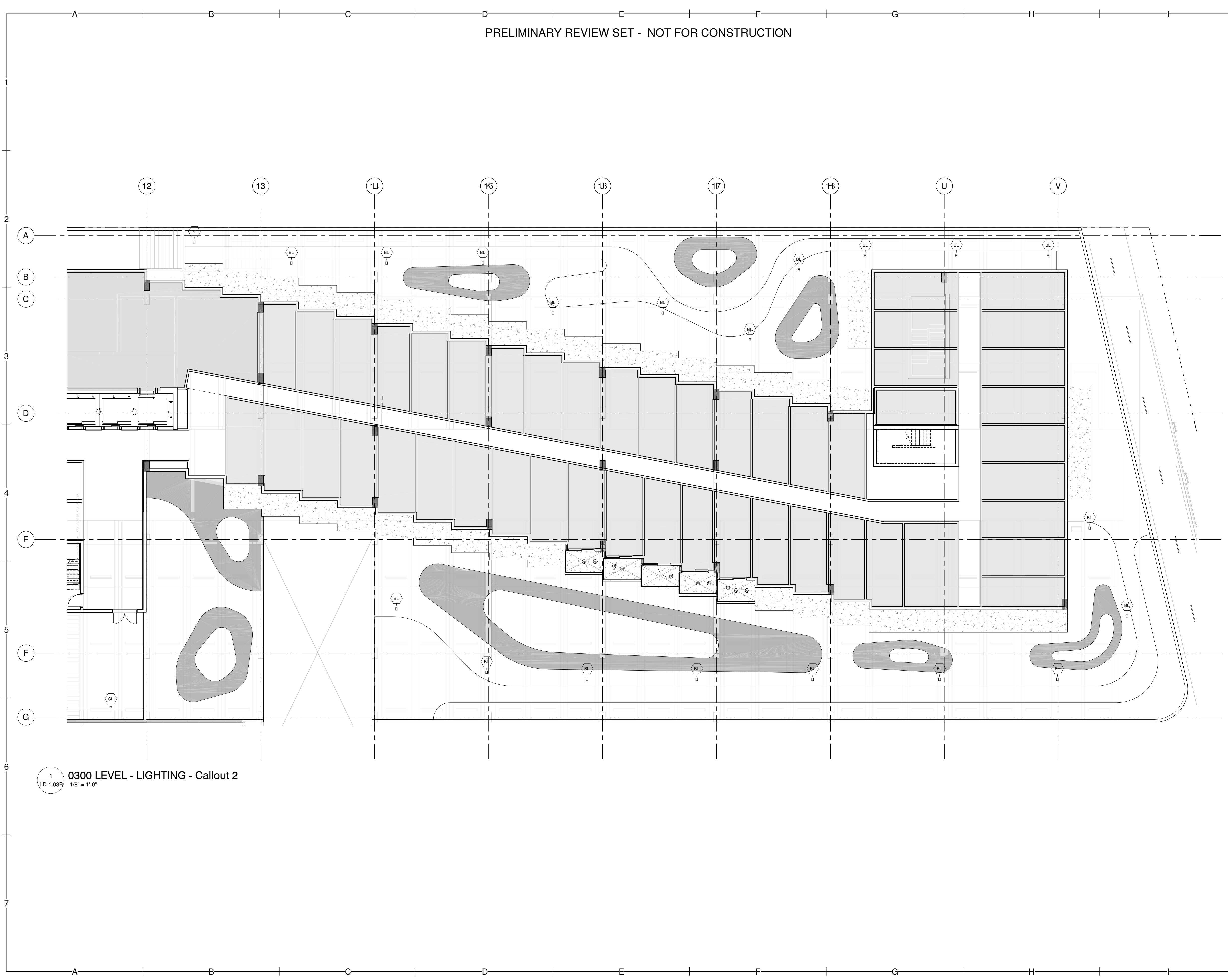
WASHINGTON AVE  
MIAMI BEACH, FL

SUBMITTAL HISTORY:

06-12-15

Revisions

# Description Date



1 0300 LEVEL - LIGHTING - Callout 2  
LD-1.03B  
1/8" = 1'-0"

Z:\OBrien Lighting\Projects\2015\020\_601\_Washington  
2/24/2016 11:46:14 AM 2015-020-601\_Washington Avenue-CBL MODEL.rvt



Morris Adjmi Architects  
www.ma.com  
O'Brien Lighting Inc

Washington Squared LLC  
Ken Fulk

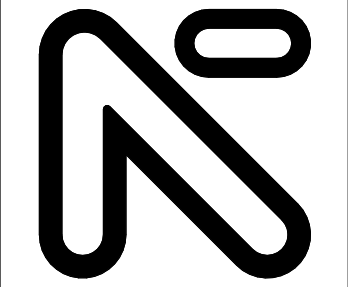
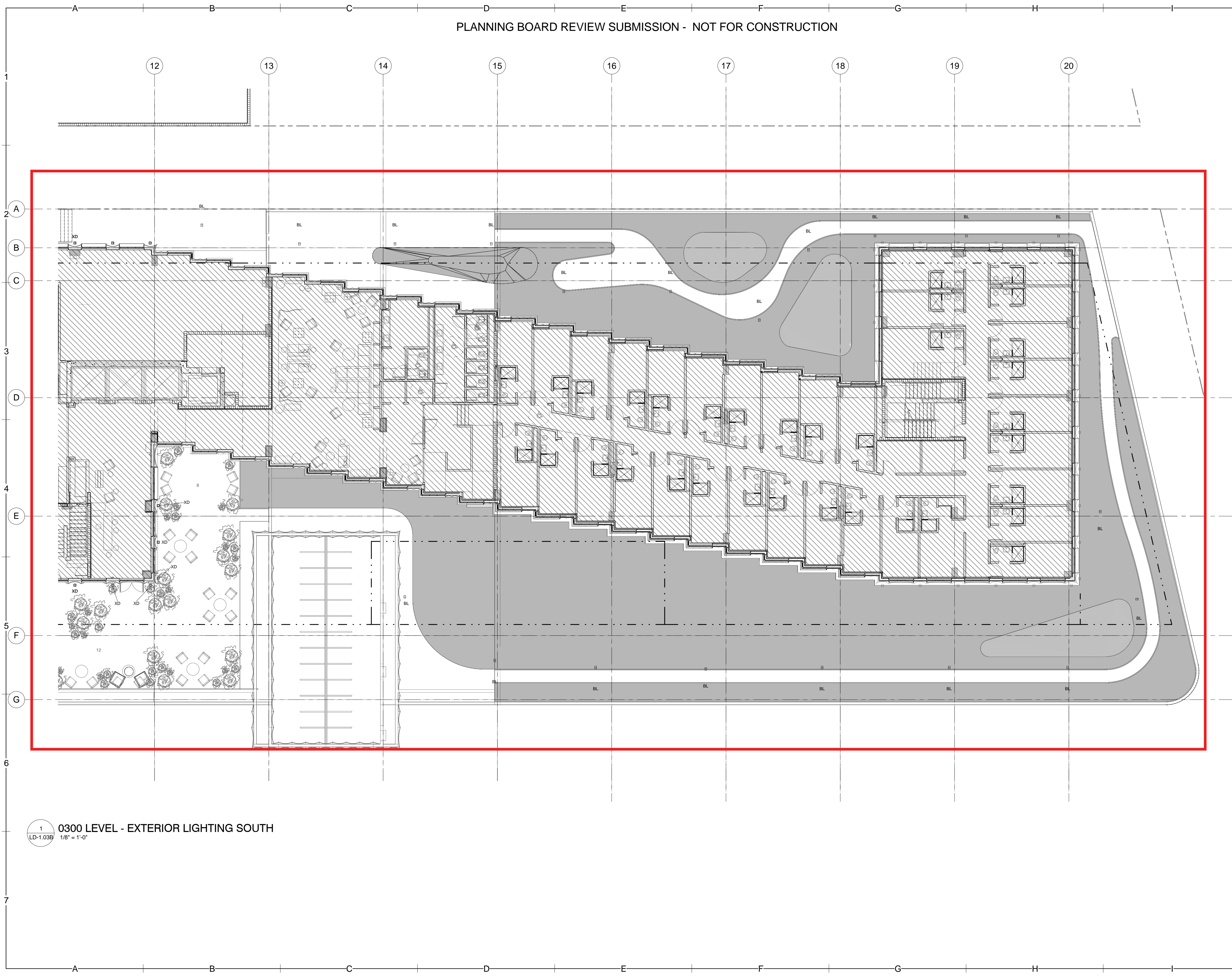
Raymond Jungles Inc.  
Nichols Brosch Wurst Wolfe & Associates

601-685 Washington Ave.  
Miami Beach, FL

Level 3 Lighting Plan - Enlarged - South  
Planning Board Final Submittal / 2 March 2016

APPROVED

LD-1.03B



**NICHOLS  
BROSCH  
WURST  
WOLFE**  
& ASSOCIATES, INC.  
Architecture & Planning  
161 Almeria Avenue  
Coral Gables, FL 33134  
(305) 443-5206  
(305) 446-2872  
FAX: 305-443-5000

OWNER / DEVELOPER:  
  
CONSULTANT:  
**O'BRIEN LIGHTING, INC.**  
1175 BUCKLE UP AVENUE  
SUITE 1000  
MIAMI, FL 33131  
TEL: 305-224-8100  
WWW.OBRIENLIGHTING.COM

**WASHINGTON AVE**  
MIAMI BEACH, FL

SUBMITTAL HISTORY:  
**11-11-16**

Revisions  
# Description Date

14040  
3RD LEVEL EXTERIOR  
LIGHTING SOUTH  
**LD-1.03B**

Z:\OBrien Lighting\Archives\Michael P.'s Files\REV\T\01620161111\_601  
11/11/2016 5:20:52 PM\BL\_PFEISEL\_COPY.rvt



Morris Adjmi Architects  
www.ma.com  
O'Brien Lighting Inc

Washington Squared LLC  
Ken Fulk

Raymond Jungles Inc.  
Nichols Brosch Wurst Wolfe & Associates

601-685 Washington Ave.  
Miami Beach, FL

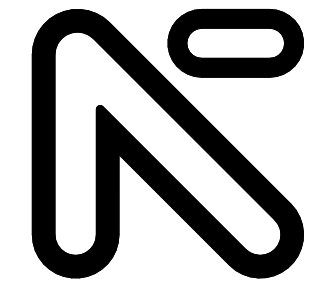
**Level 3 Lighting Plan - Enlarged - South**  
Planning Board Modification - Final Submittal / 28 November 2016

**REVISED**

LD-1.03B



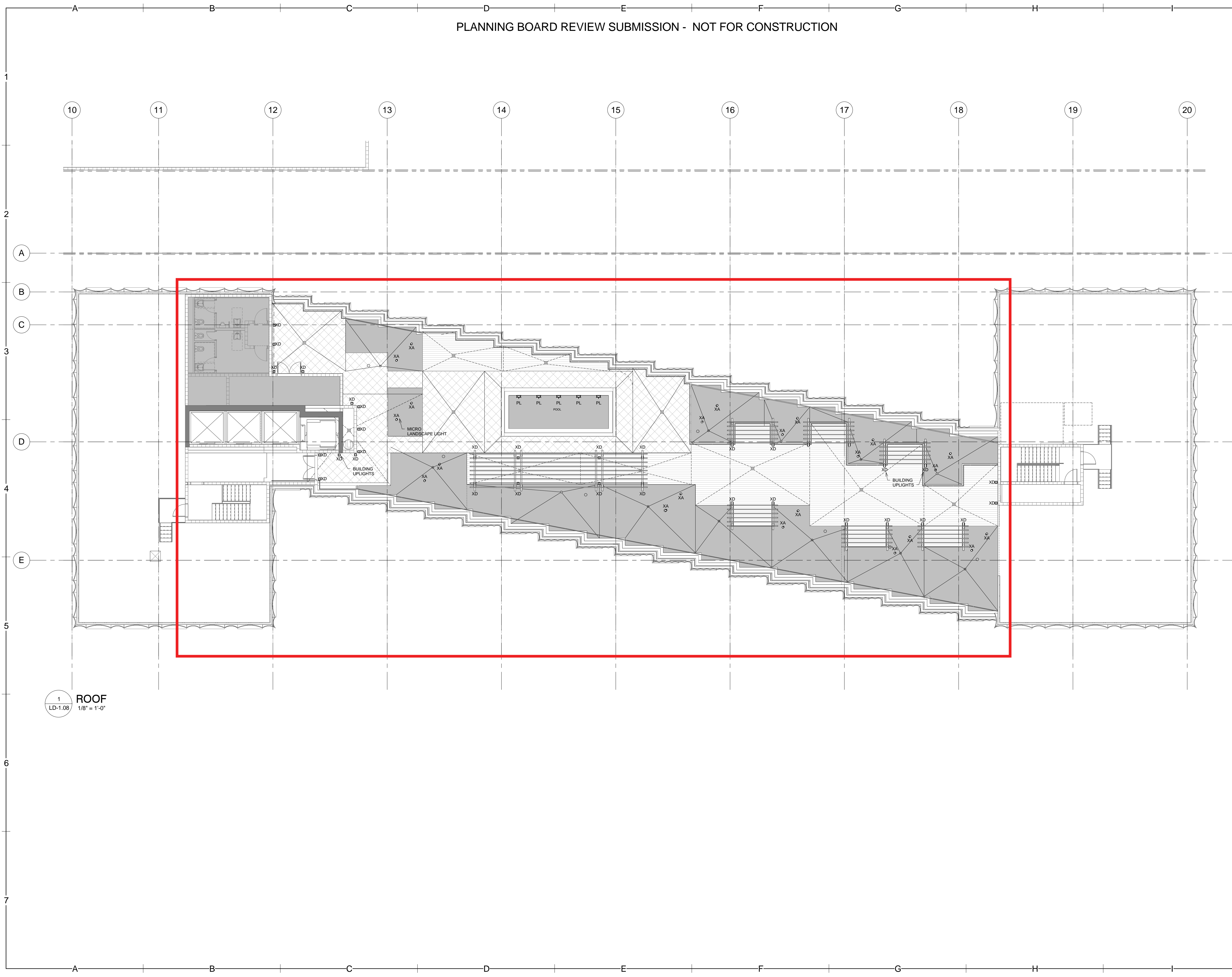
THIS PAGE HAS INTENTIONALLY BEEN LEFT BLANK



**NICHOLS  
BROSCH  
WURST  
WOLFE**  
& ASSOCIATES, INC.  
Architecture & Planning  
161 Almeria Avenue  
Coral Gables, FL 33134  
(305) 446-2006  
(305) 446-2872  
FAC: 300600

OWNER / DEVELOPER:

CONSULTANT:  
O'BRIEN LIGHTING, INC.  
1175 BIRDELL AVENUE  
SUITE 1000  
MIAMI, FL 33131  
(305) 251-1111  
WWW.OBRIENLIGHTING.COM



1 ROOF  
LD-1.08 1/8" = 1'-0"

Z:\O'Brien Lighting\Archives\Michael P.'s Files\REV\T\2016\20161111\_601  
11/11/2016 5:20:56 PM\BL\_PFEISEL\_COPY.rvt

WASHINGTON AVE  
MIAMI BEACH, FL

SUBMITTAL HISTORY:  
11-11-16

Revisions

#	Description	Date

14040  
ROOFTOP LIGHTING  
PLAN  
LD-1.08



Morris Adjmi Architects  
www.ma.com  
O'Brien Lighting Inc

Washington Squared LLC  
Ken Fulck

Raymond Jungles Inc.  
Nichols Brosch Wurst Wolfe & Associates

601-685 Washington Ave.  
Miami Beach, FL

# Rooftop Lighting Plan

Planning Board Modification - Final Submittal / 28 November 2016

**REVISED**

LD-1.08