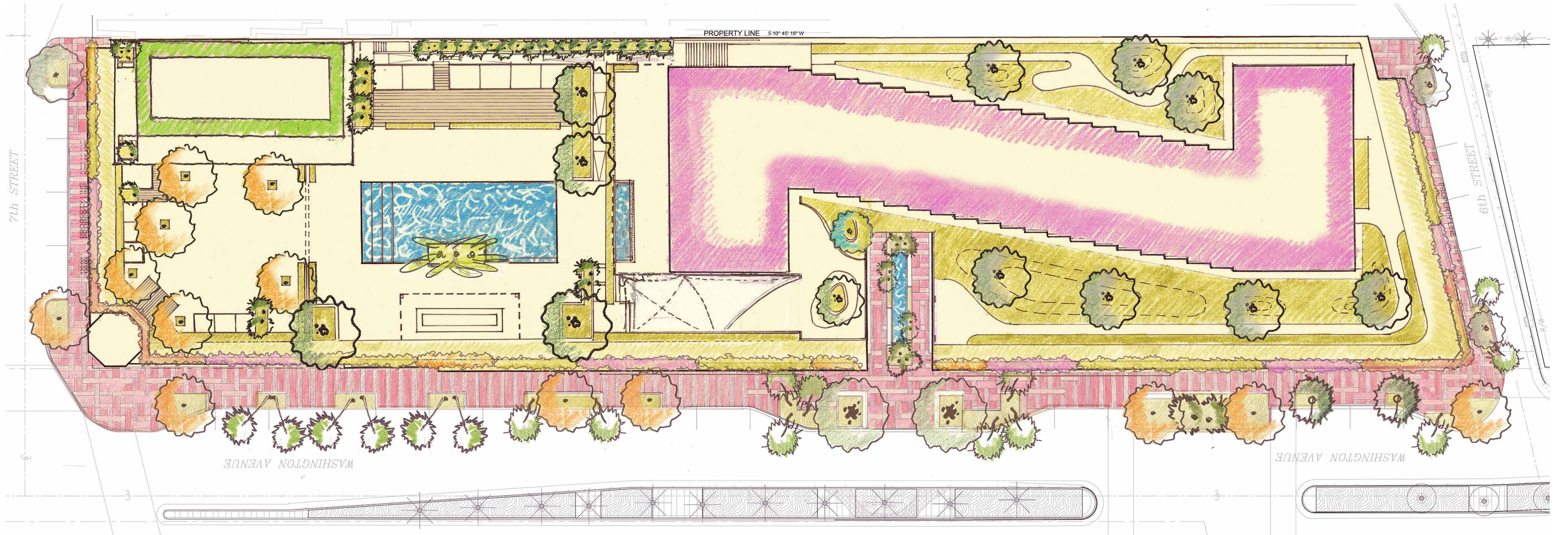


PLANNING BOARD FINAL SUBMITTAL

MARCH 02, 2016

601-685 WASHINGTON AVENUE
MIAMI BEACH, FL

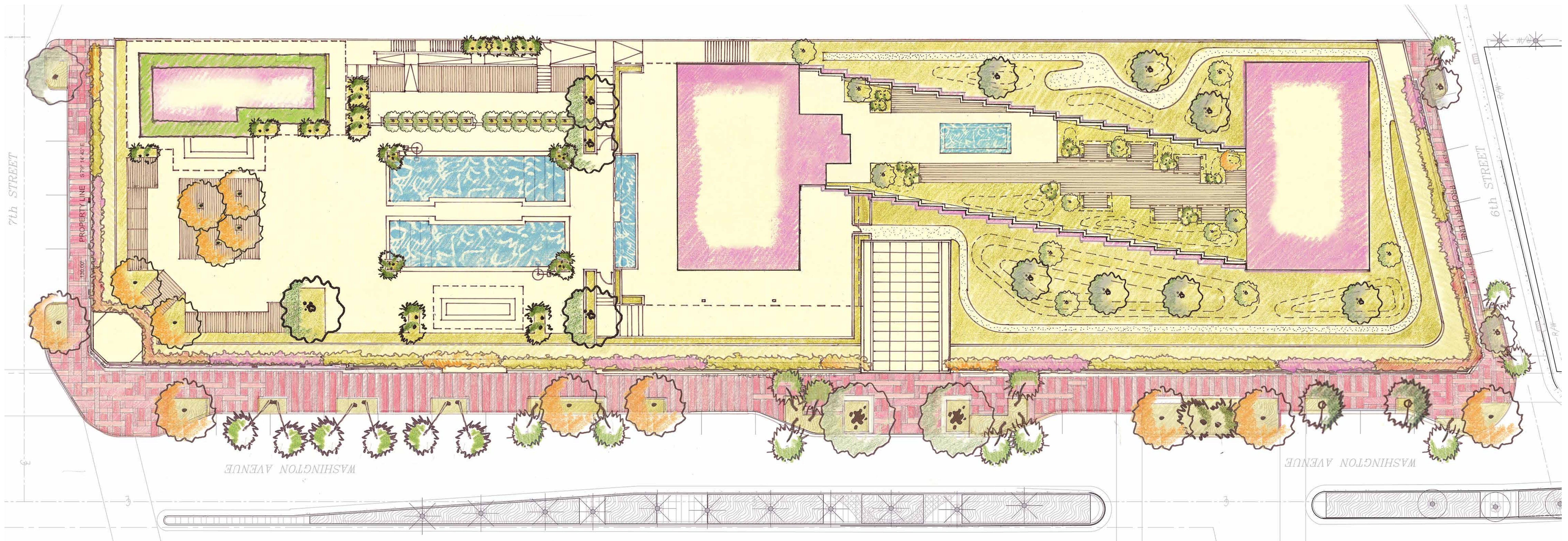


L-01	Cover Sheet	L-07	Second Level - Planting	L-13	Silva Cell Details	L-19	Section 05	L-25	Character Imagery
L-02	Existing Tree Survey	L-08	Third Level - Hardscape	L-14	Section Key Plan	L-20	Section 06	L-26	Irrigation Plan
L-03	Tree Disposition Plan	L-09	Third Level - Planting	L-15	Section 01	L-21	Section 07		
L-04	Ground Level - Hardscape	L-10	Third Level - Back of House Roof	L-16	Section 02	L-22	Character Imagery		
L-05	Ground Level - Planting	L-11	Composite Site Plan	L-17	Section 03	L-23	Character Imagery		
L-06	Second Level - Hardscape	L-12	Paving Pattern Details + Materials	L-18	Section 04	L-24	Character Imagery		

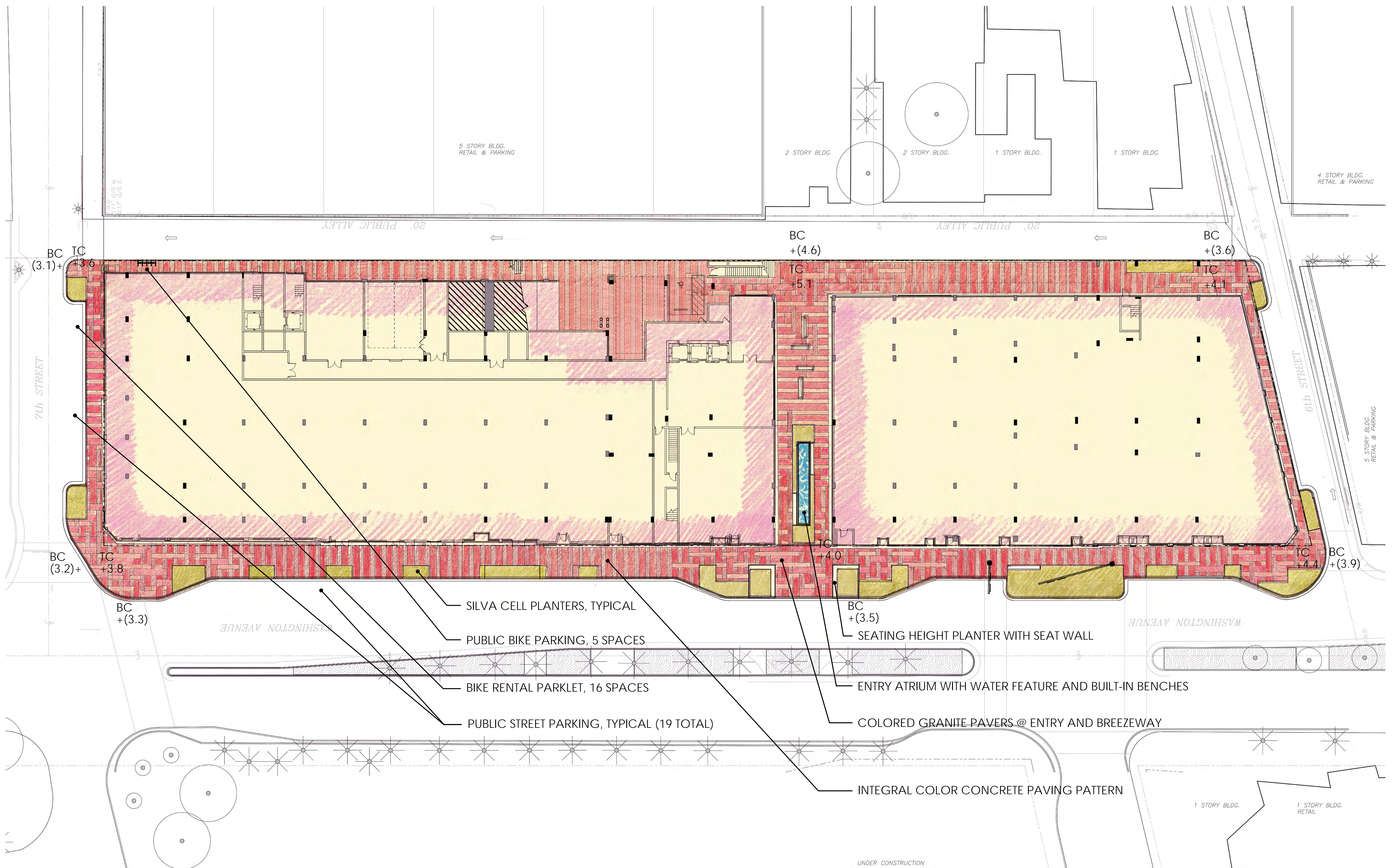
PLANNING BOARD MODIFICATION - FINAL SUBMITTAL

NOVEMBER 28, 2016

601-685 WASHINGTON AVENUE
MIAMI BEACH, FL



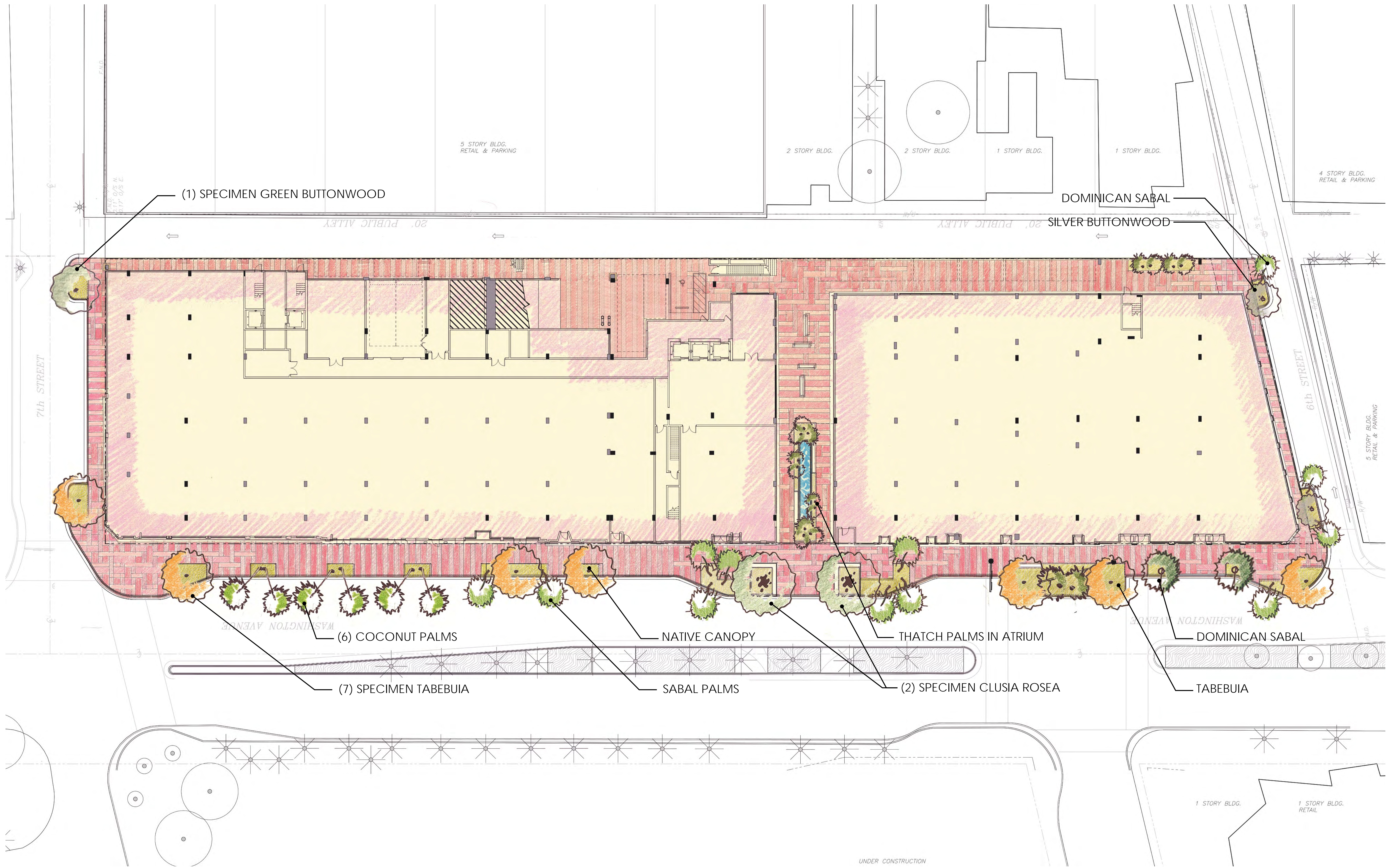
L-01	Cover Sheet - REVISED	L-07	Second Level - Planting (APPROVED)	L-13	Silva Cell Details	L-19	Section 05	L-25	Character Imagery
L-02	Existing Tree Survey	L-08	Third Level - Hardscape - REVISED	L-14	Section Key Plan	L-20	Section 06	L-26	Irrigation Plan
L-03	Tree Disposition Plan	L-09	Third Level - Planting - REVISED	L-15	Section 01	L-21	Section 07		
L-04	Ground Level - Hardscape (APPROVED)	L-10	Third Level - Back of House Roof and Roof Level - REVISED	L-16	Section 02	L-22	Character Imagery		
L-05	Ground Level - Planting (APPROVED)	L-11	Composite Site Plan and Roof Level Planting - REVISED	L-17	Section 03	L-23	Character Imagery		
L-06	Second Level - Hardscape (APPROVED)	L-12	Paving Pattern Details + Materials	L-18	Section 04	L-24	Character Imagery		



+#.# SPOT ELEVATION IN NAVD
 +(#.#) EXISTING SPOT ELEVATION IN NAVD



THIS PAGE HAS INTENTIONALLY BEEN LEFT BLANK



(1) SPECIMEN GREEN BUTTONWOOD

DOMINICAN SABAL

SILVER BUTTONWOOD

(6) COCONUT PALMS

NATIVE CANOPY

THATCH PALMS IN ATRIUM

DOMINICAN SABAL

(7) SPECIMEN TABEBUIA

SABAL PALMS

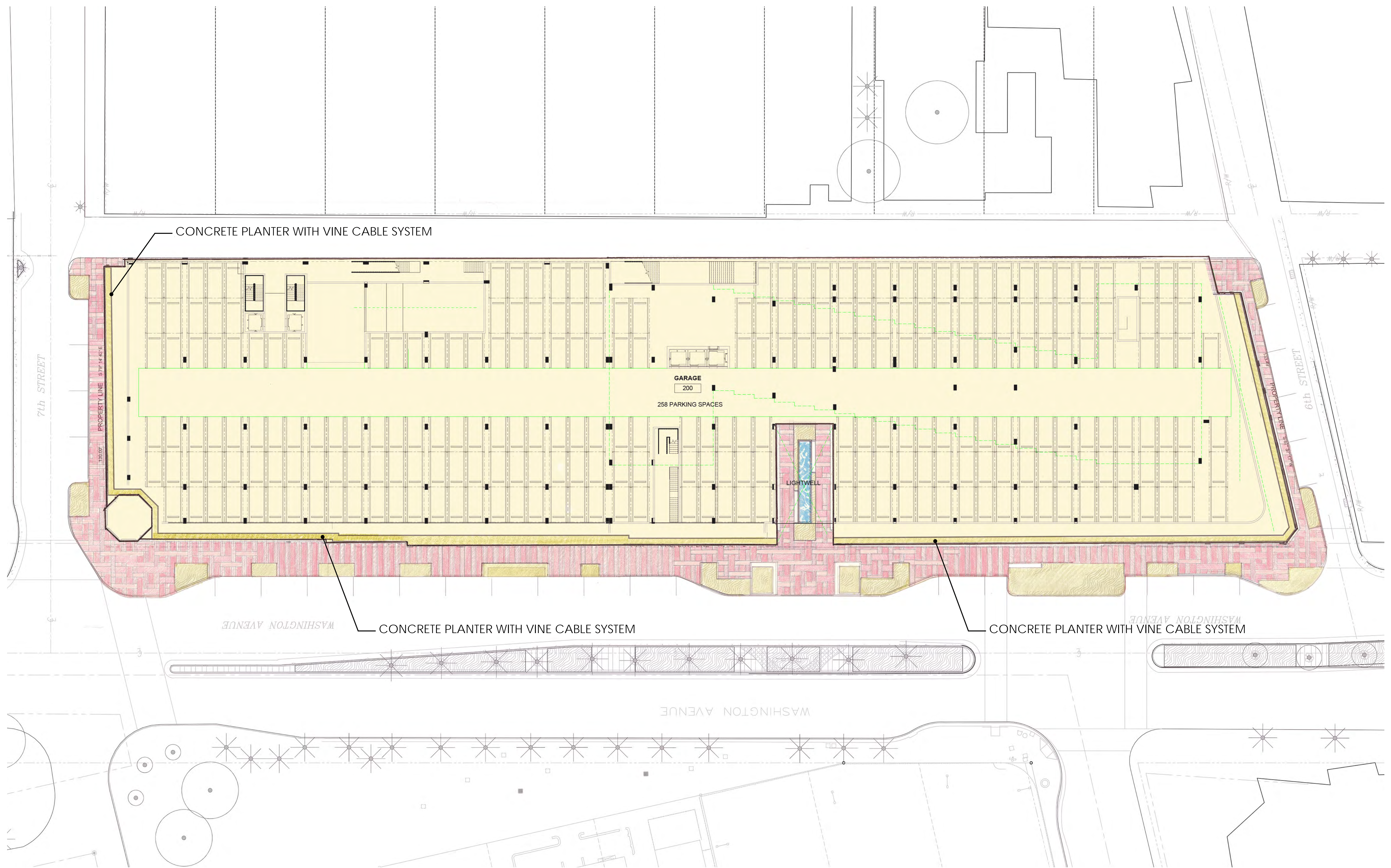
(2) SPECIMEN CLUSIA ROSEA

TABEBUIA

UNDER CONSTRUCTION

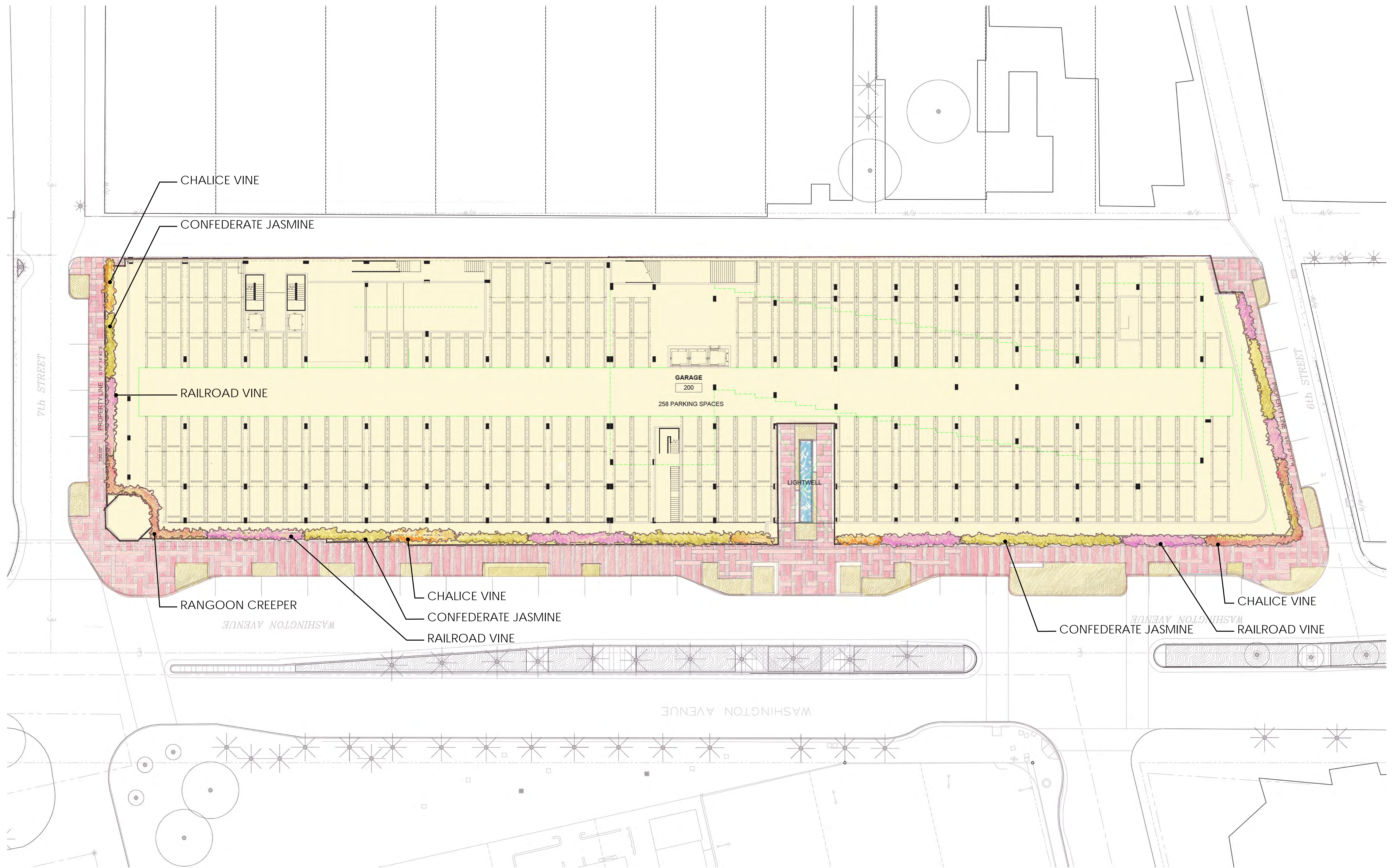


THIS PAGE HAS INTENTIONALLY BEEN LEFT BLANK



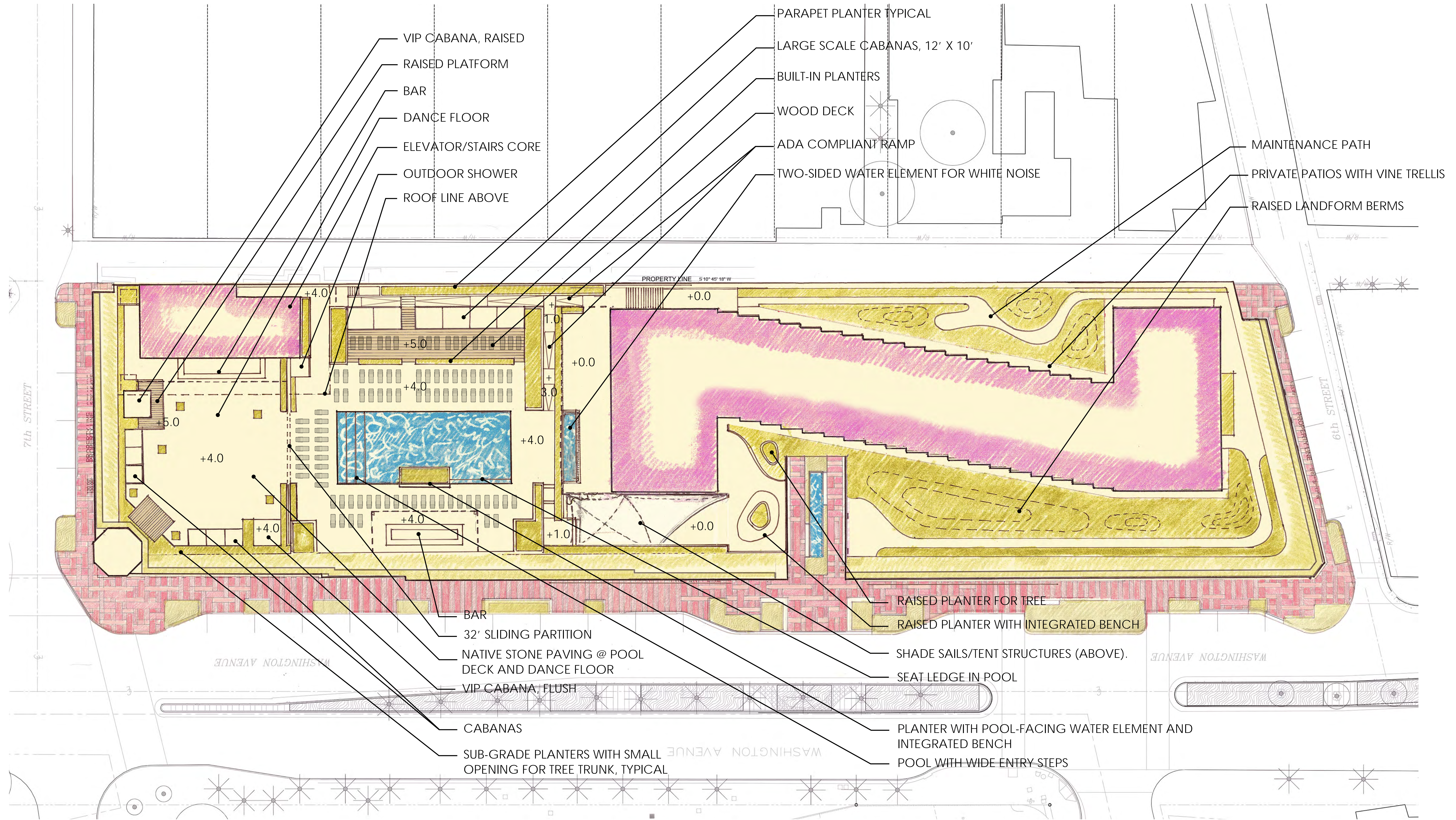


THIS PAGE HAS INTENTIONALLY BEEN LEFT BLANK

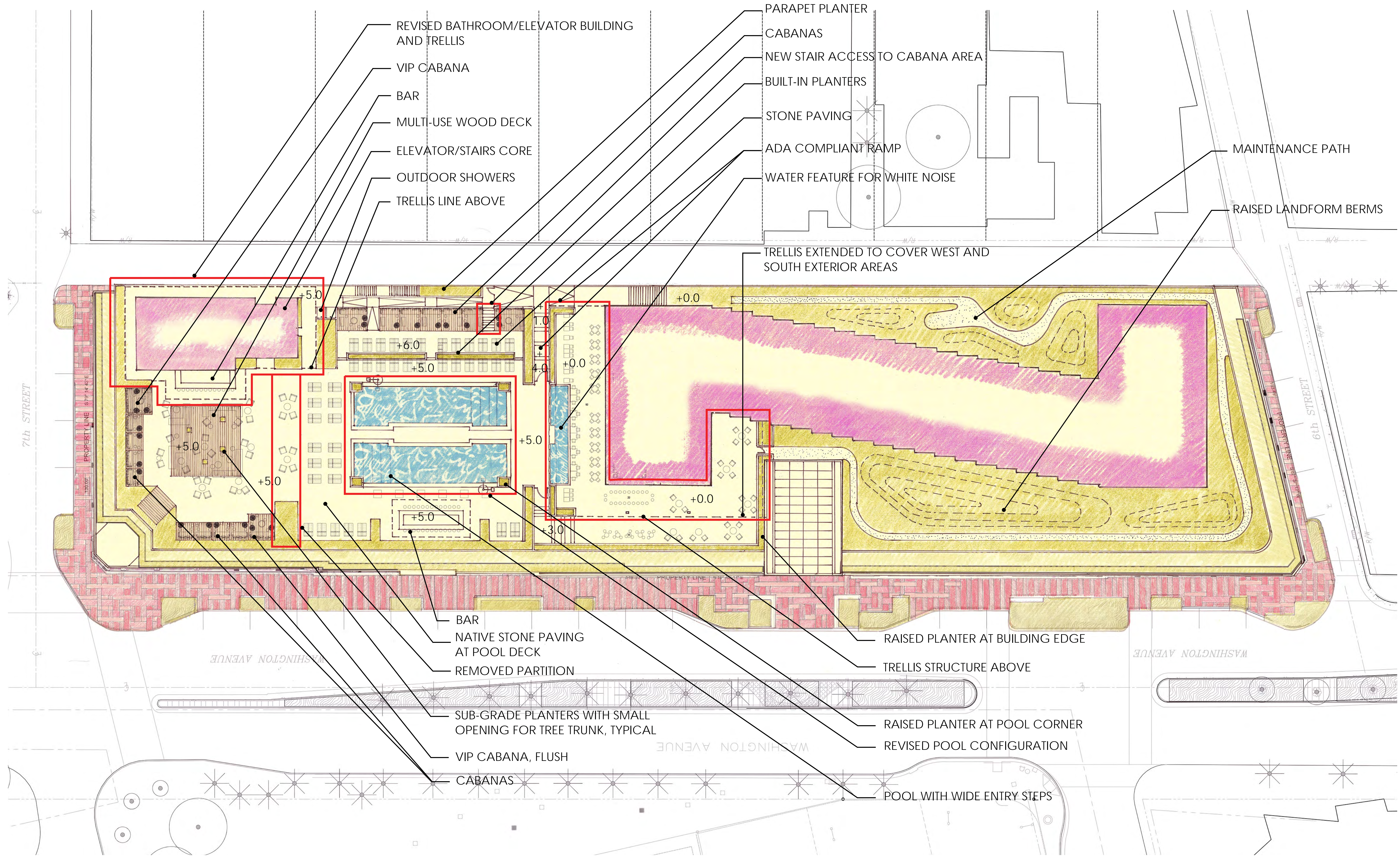


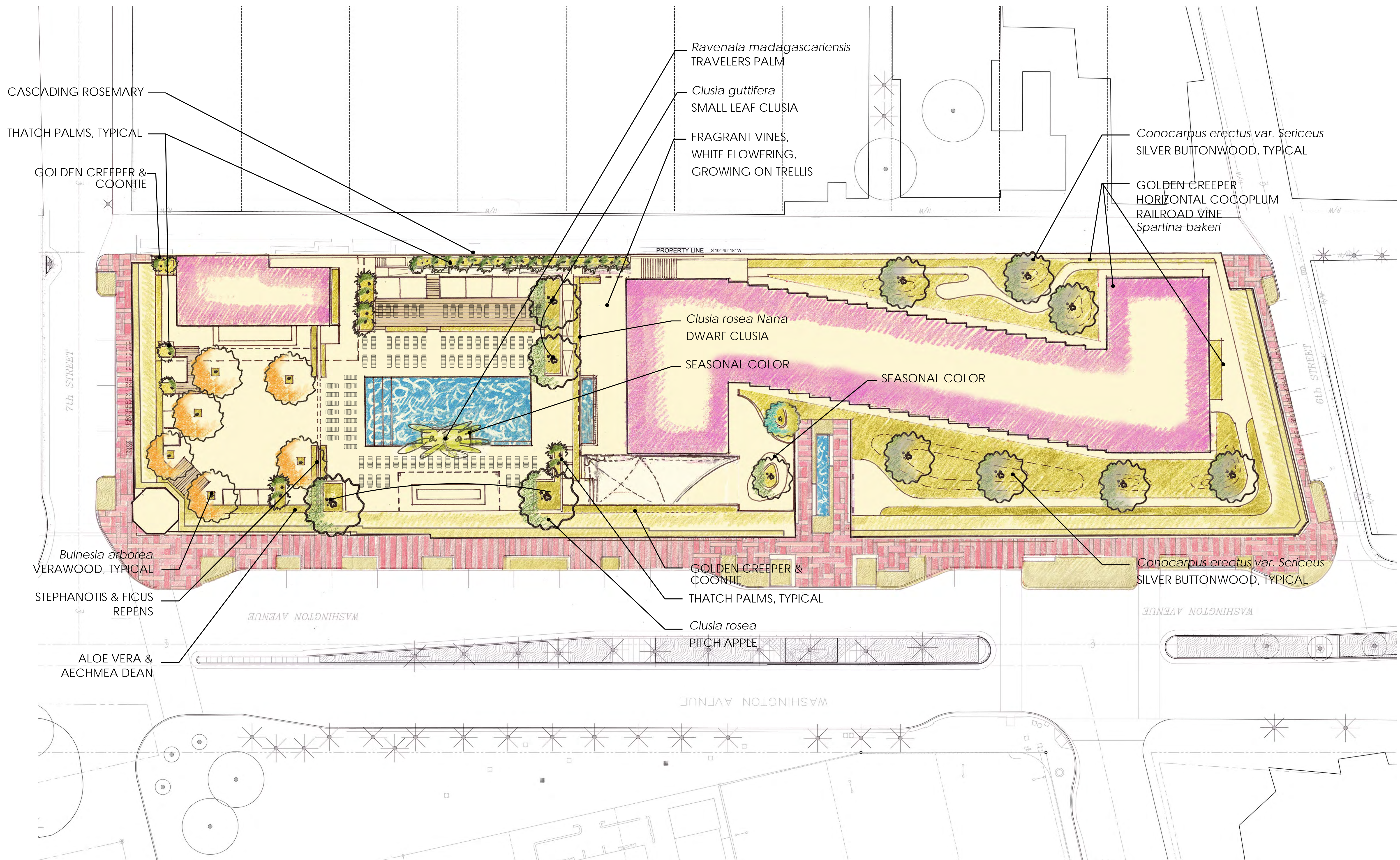


THIS PAGE HAS INTENTIONALLY BEEN LEFT BLANK



+#.# SPOT ELEVATION, DINING AREA AS
BASE ELEVATION





CASCADING ROSEMARY

THATCH PALMS, TYPICAL

GOLDEN CREEPER & COONTIE

Ravenala madagascariensis
TRAVELERS PALM

Clusia guttifera
SMALL LEAF CLUSIA

FRAGRANT VINES,
WHITE FLOWERING,
GROWING ON TRELIS

Conocarpus erectus var. *Sericeus*
SILVER BUTTWOOD, TYPICAL

GOLDEN CREEPER
HORIZONTAL COCOPLUM
RAILROAD VINE
Spartina bakeri

Clusia rosea Nana
DWARF CLUSIA

SEASONAL COLOR

SEASONAL COLOR

Bulnesia arborea
VERAWOOD, TYPICAL

STEPHANOTIS & FICUS
REPENS

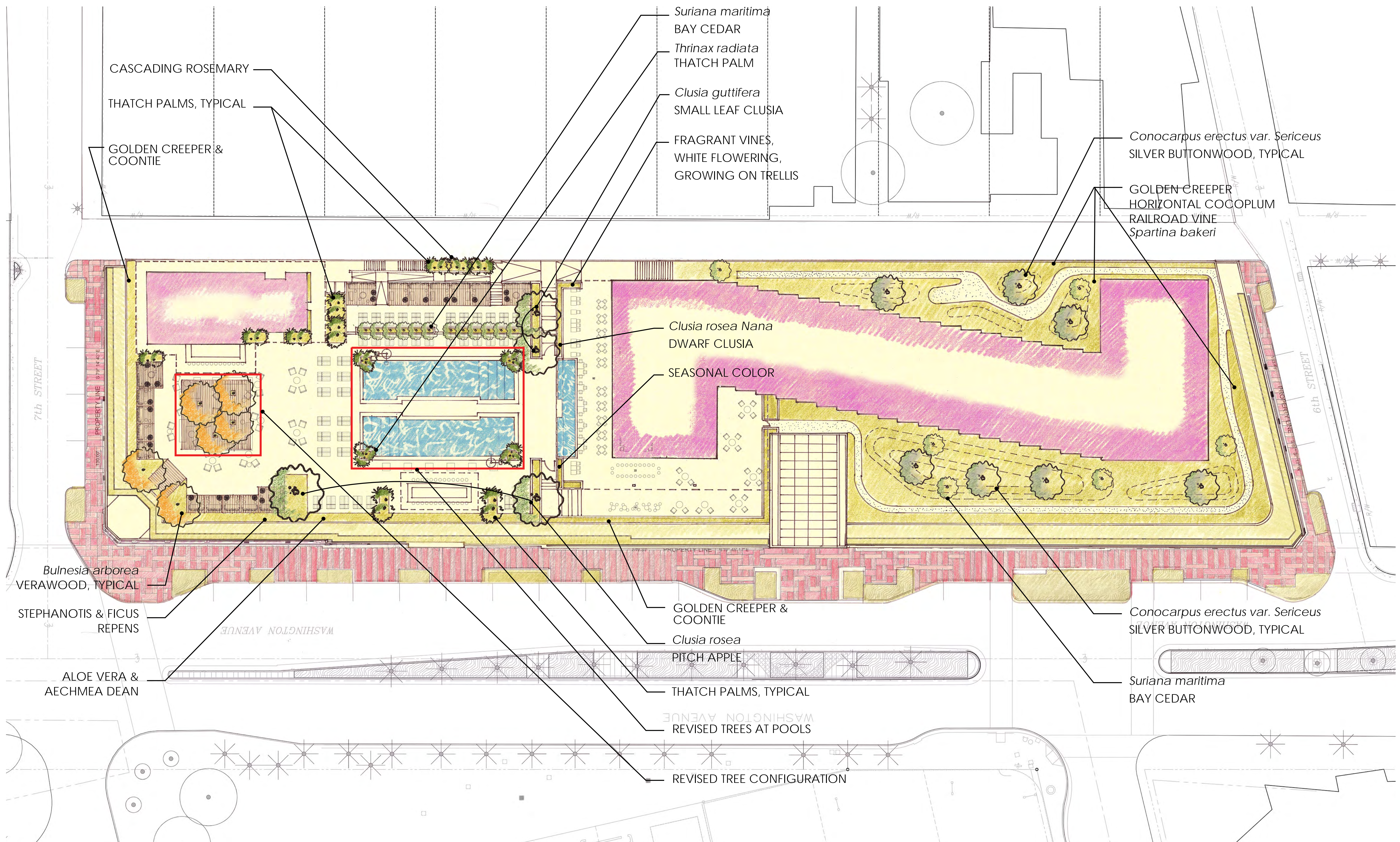
GOLDEN CREEPER &
COONTIE

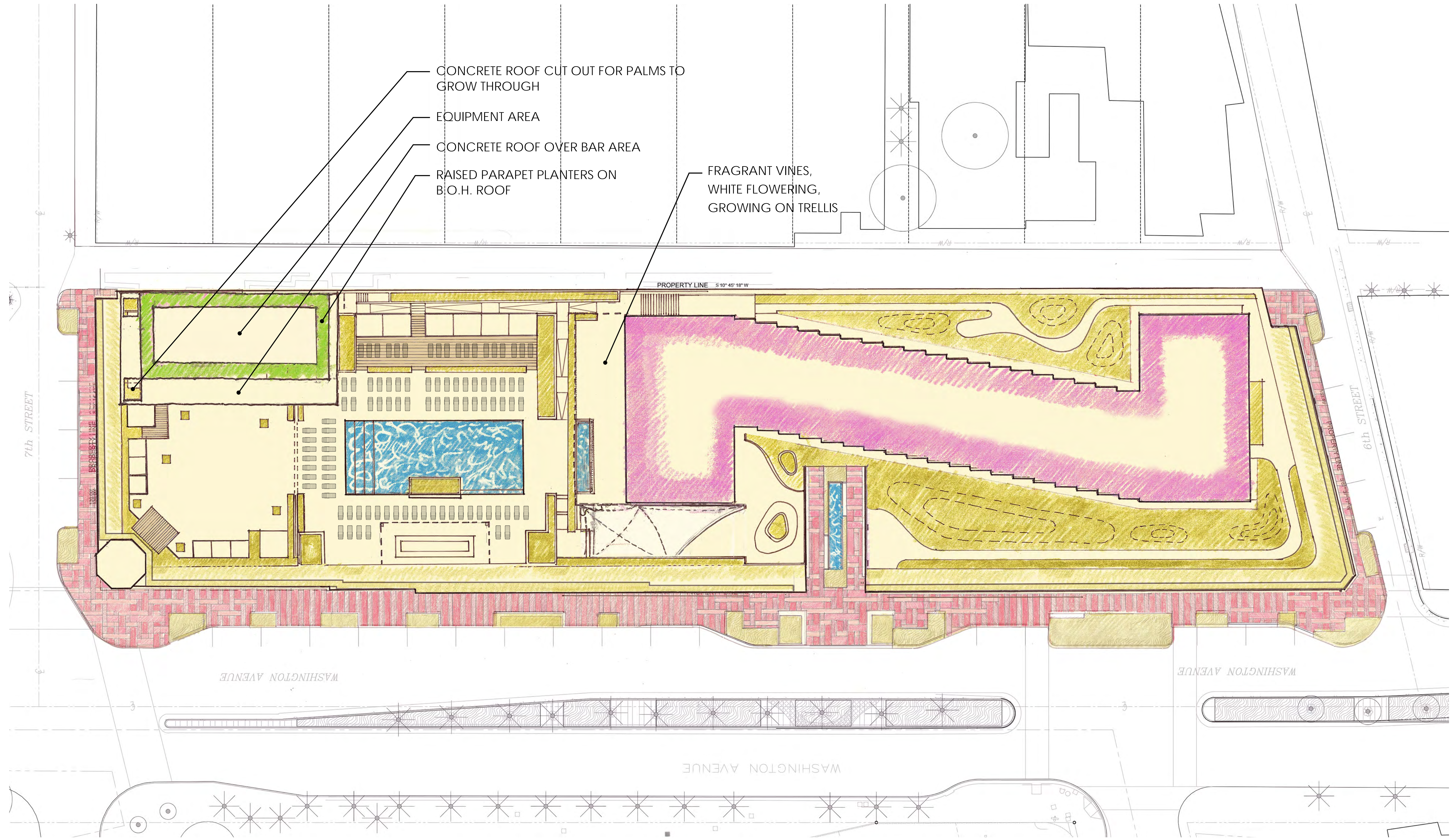
Clusia rosea
PITCH APPLE

Conocarpus erectus var. *Sericeus*
SILVER BUTTWOOD, TYPICAL

ALOE VERA &
AECHMEA DEAN

THATCH PALMS, TYPICAL





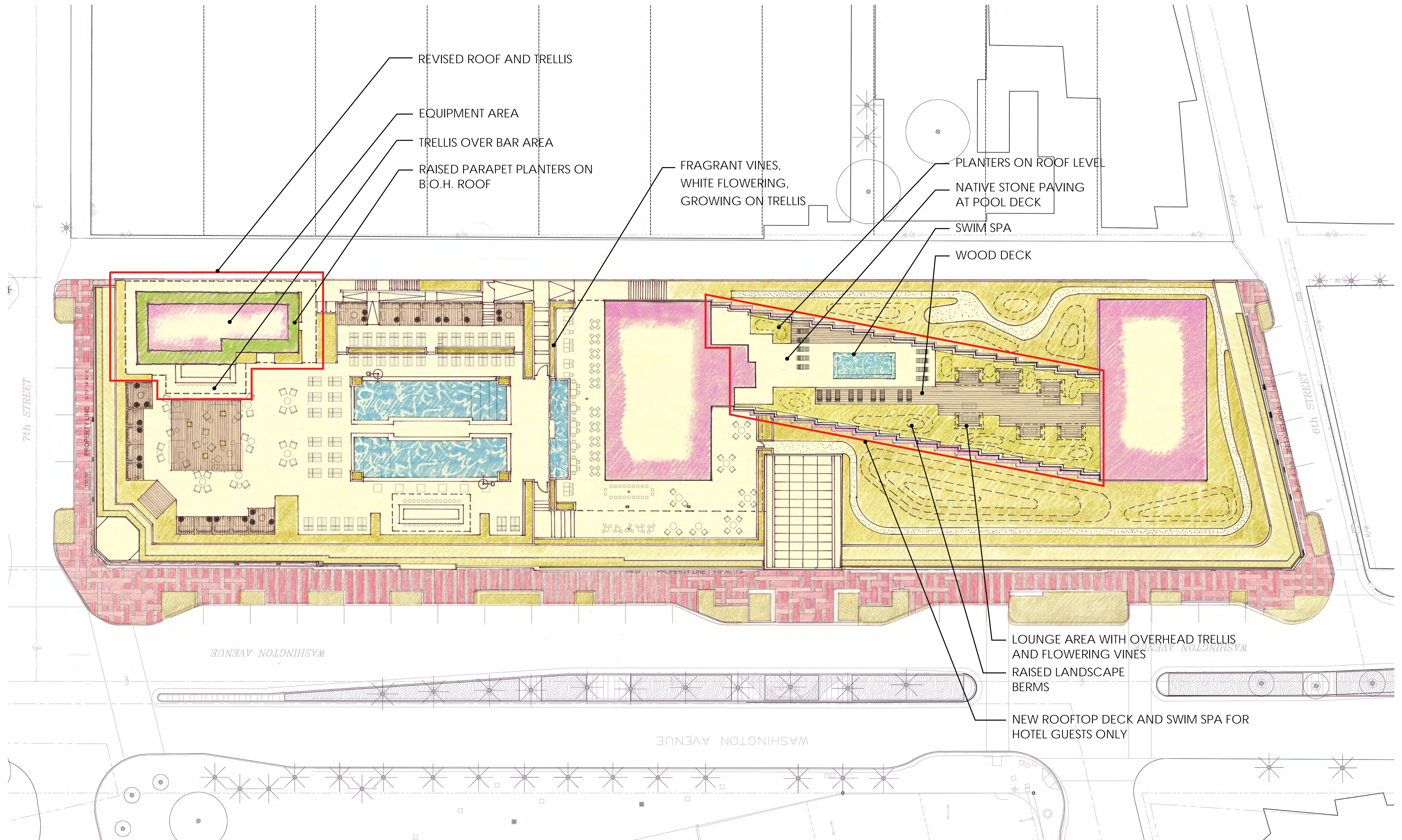
CONCRETE ROOF CUT OUT FOR PALMS TO GROW THROUGH

EQUIPMENT AREA

CONCRETE ROOF OVER BAR AREA

RAISED PARAPET PLANTERS ON B.O.H. ROOF

FRAGRANT VINES, WHITE FLOWERING, GROWING ON TRELLIS



REVISED ROOF AND TRELLIS

EQUIPMENT AREA

TRELLIS OVER BAR AREA

RAISED PARAPET PLANTERS ON B.O.H. ROOF

FRAGRANT VINES, WHITE FLOWERING, GROWING ON TRELLIS

PLANTERS ON ROOF LEVEL

NATIVE STONE PAVING AT POOL DECK

SWIM SPA

WOOD DECK

LOUNGE AREA WITH OVERHEAD TRELLIS AND FLOWERING VINES

RAISED LANDSCAPE BERMS

NEW ROOFTOP DECK AND SWIM SPA FOR HOTEL GUESTS ONLY