

Morris Adjmi Architects
www.ma.com
O'Brien Lighting Inc

Washington Squared LLC
Ken Fulk

Raymond Jungles Inc.
Nichols Brosch
Wurst Wolfe &
Associates

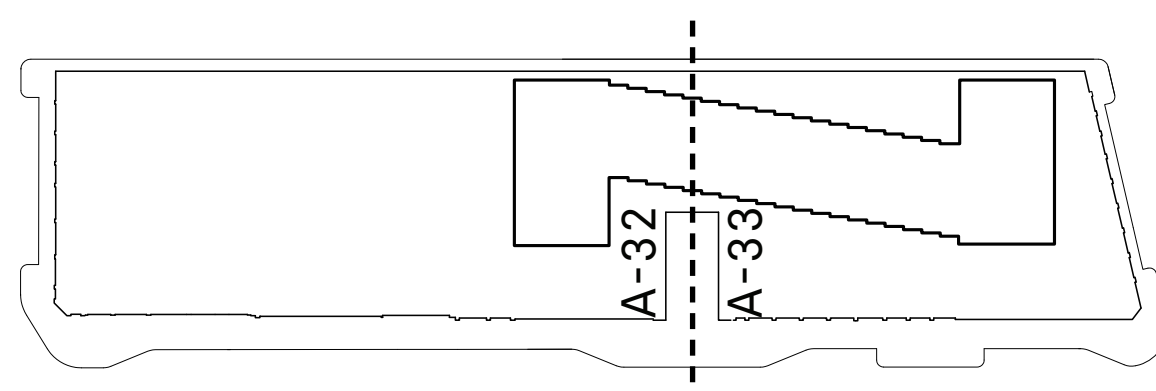
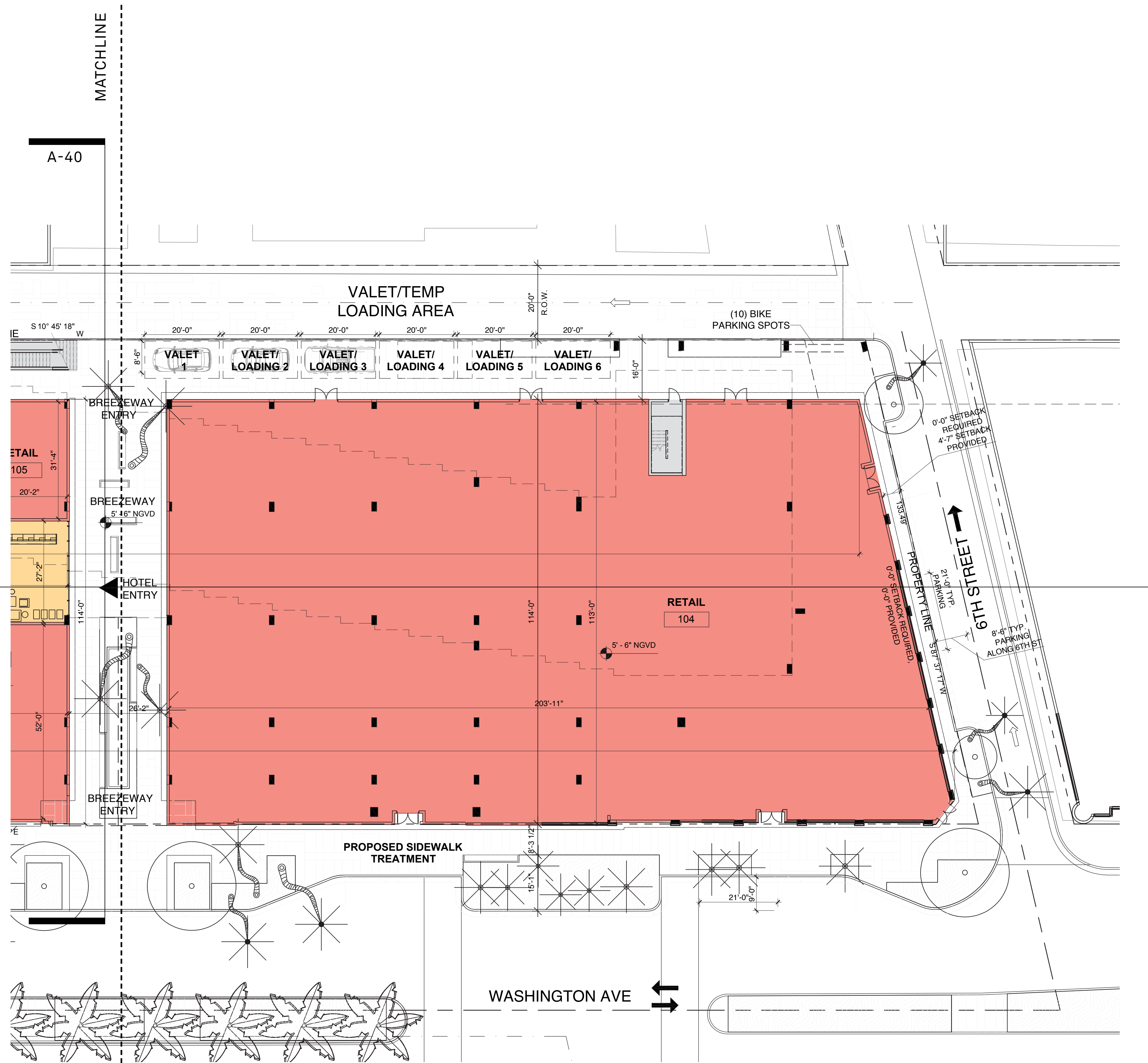
601-685 Washington Ave.
Miami Beach, FL

Ground Floor Plan - Part 1

Planning Board Modification - Final Submittal / 28 November 2016

REVISED





Morris Adjmi Architects
www.ma.com
O'Brien Lighting Inc

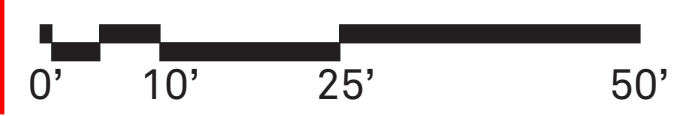
Washington Squared LLC
Ken Fulk

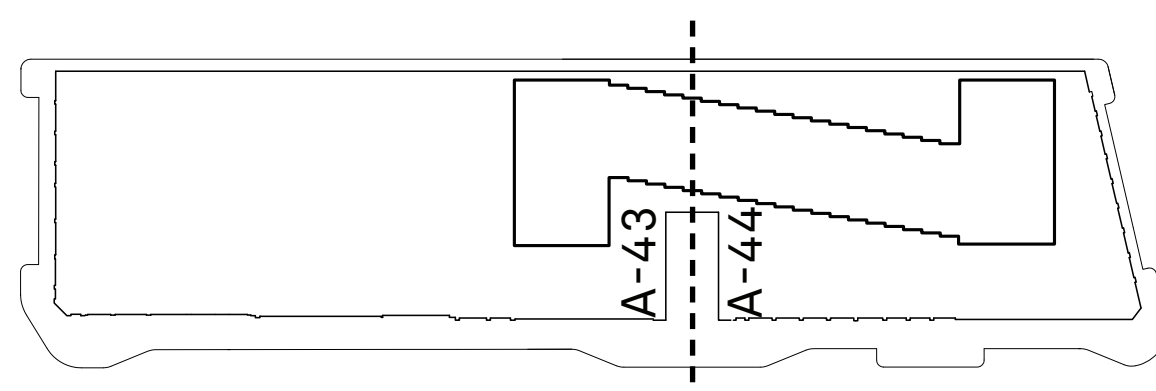
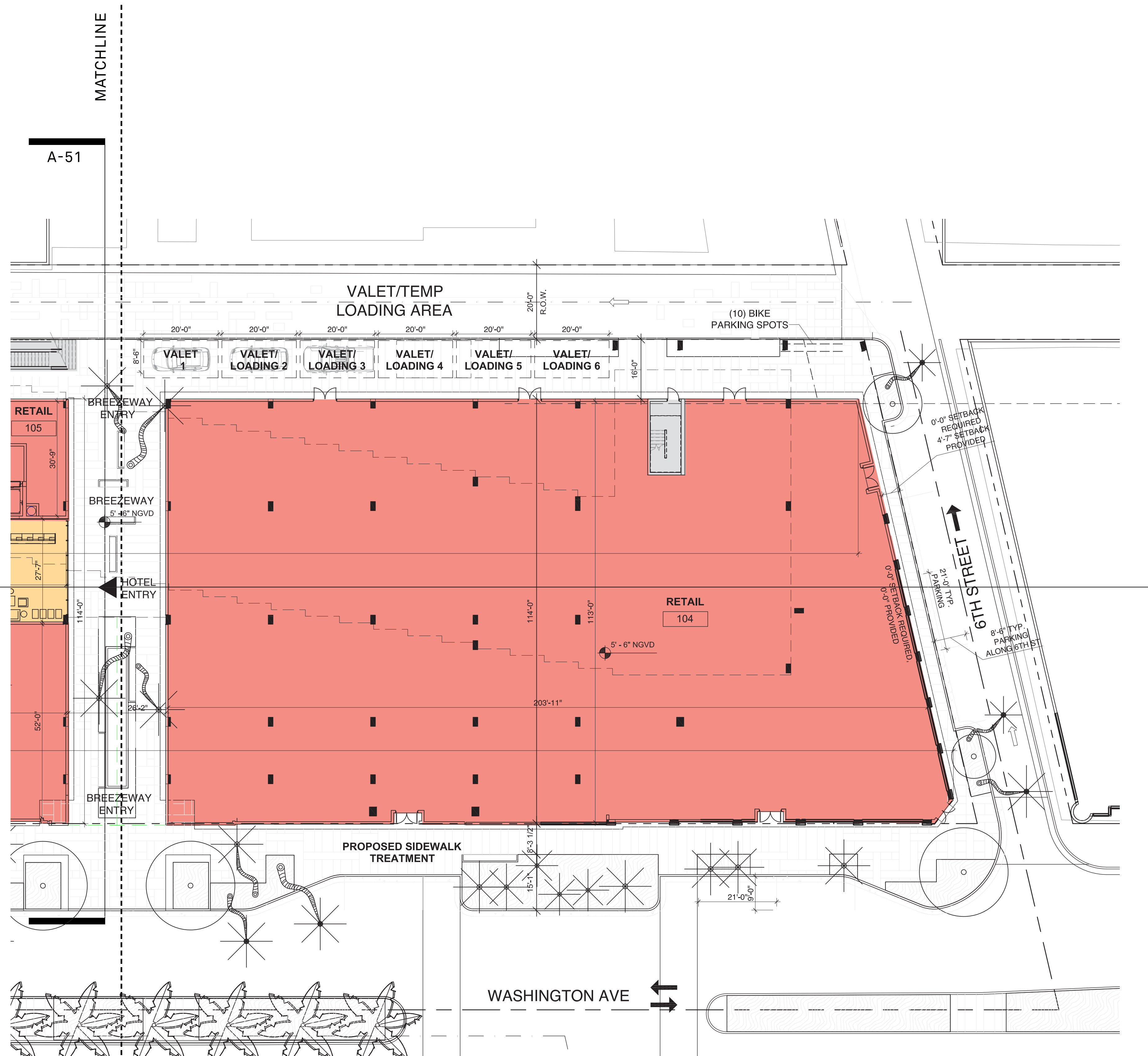
Raymond Jungles Inc.
Nichols Brosch
Wurst Wolfe &
Associates

601-685 Washington Ave.
Miami Beach, FL

Ground Floor Plan - Part 2
Planning Board Revised Final Submittal / 29 April 2016

APPROVED





Morris Adjmi Architects
www.ma.com
O'Brien Lighting Inc

Washington Squared LLC
Ken Fulk

Raymond Jungles Inc.
Nichols Brosch
Wurst Wolfe &
Associates

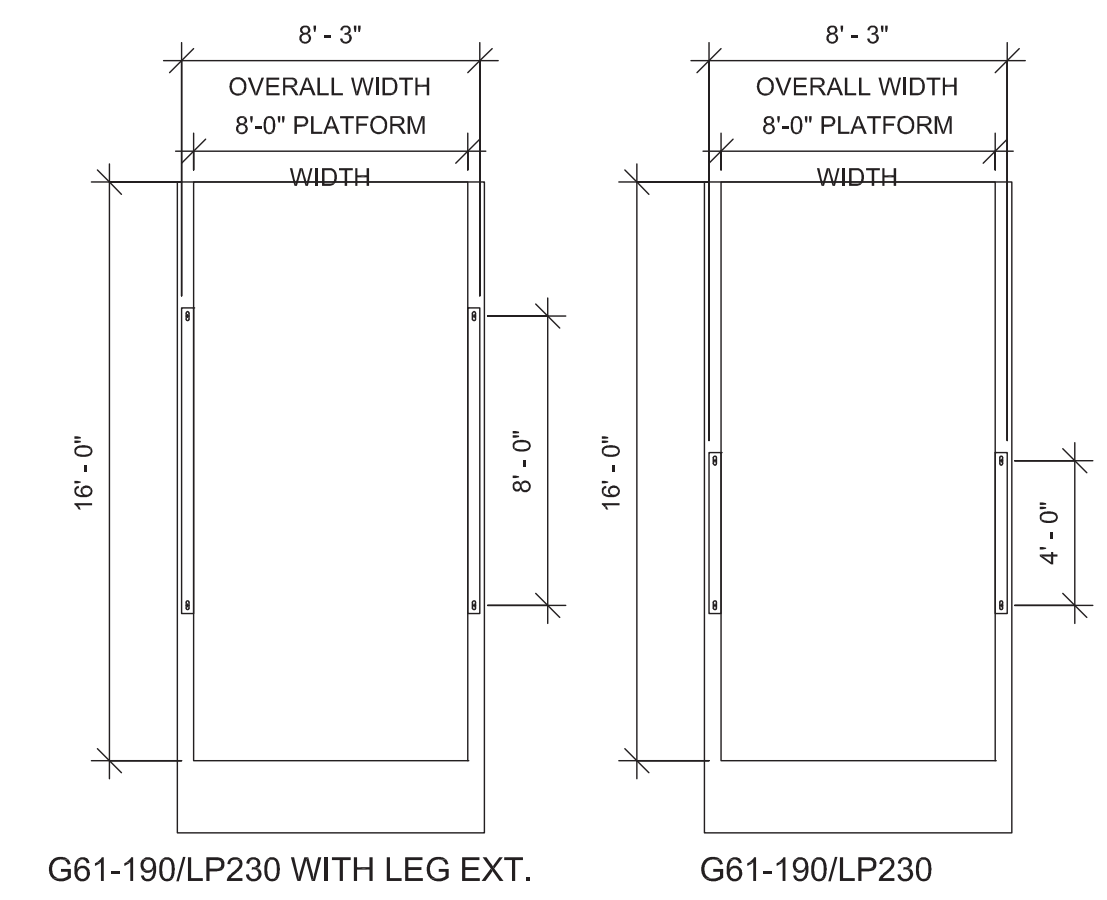
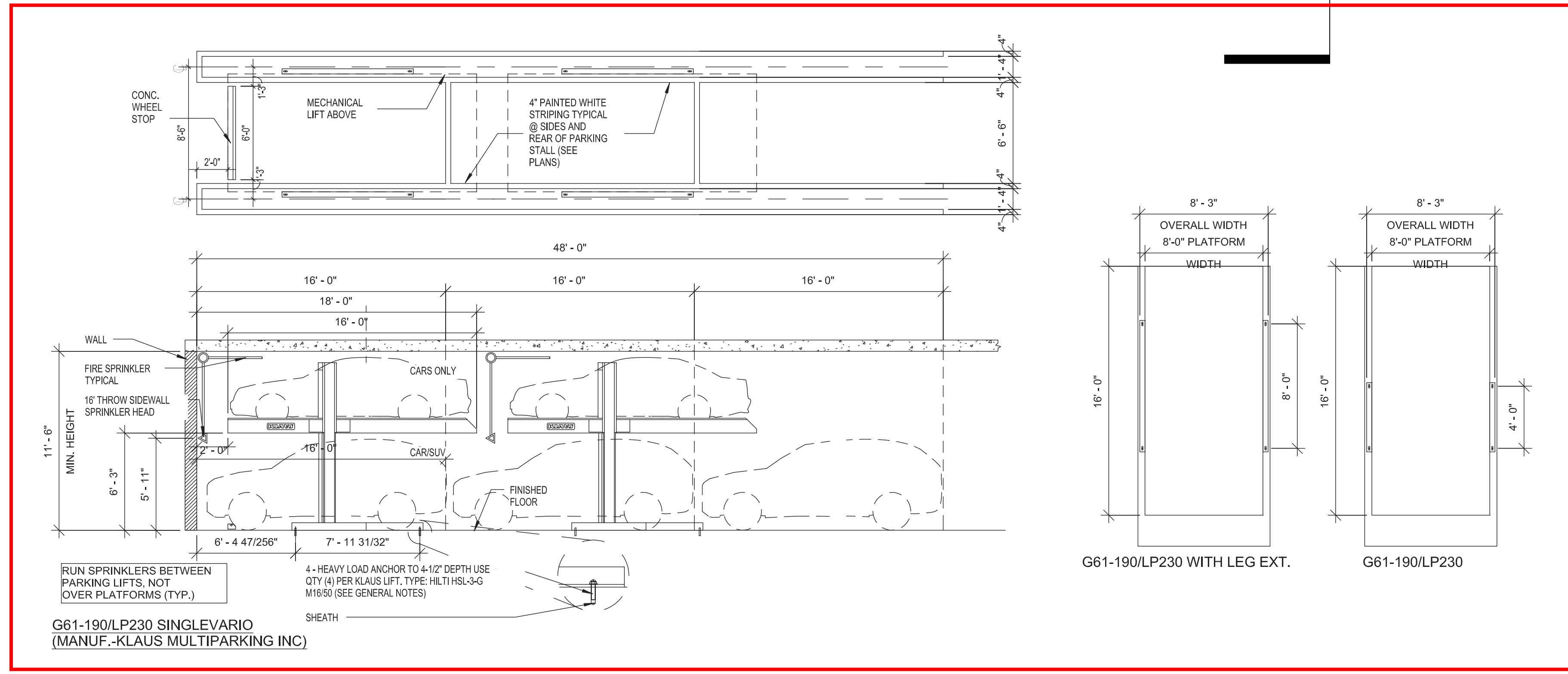
601-685 Washington Ave.
Miami Beach, FL

Ground Floor Plan - Part 2

Planning Board Modification - Final Submittal / 28 November 2016

REVISED

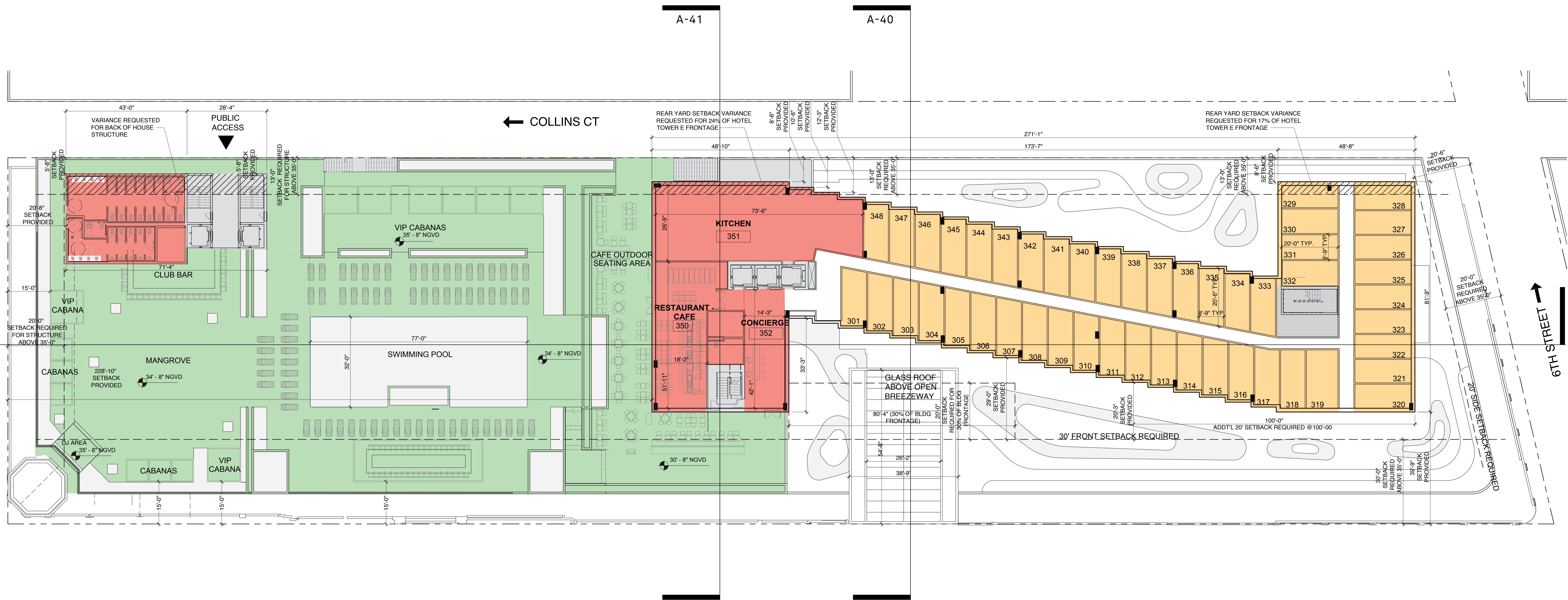




WASHINGTON AVE

REVISED





FLOOR 3: 48 HOTEL ROOMS

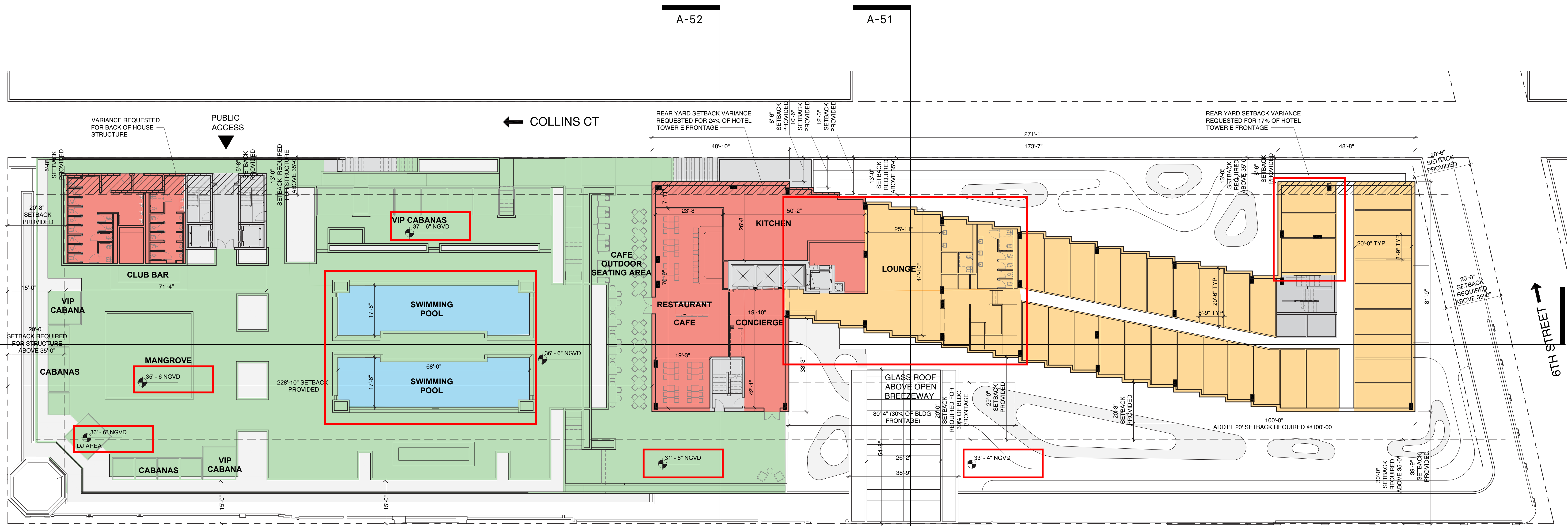
14 TYPE A* ROOMS: 182 GSF MIN
ROOM NUMBERS 318, 320-332

1 TYPE A* ROOM: 250 GSF
ROOM NUMBERS 319

33 TYPE B* ROOMS: 190 GSF MIN
ROOM NUMBERS 301-317, 333-348

*SEE A-38 FOR ENLARGED FLOOR PLANS OF UNIT TYPES A AND B

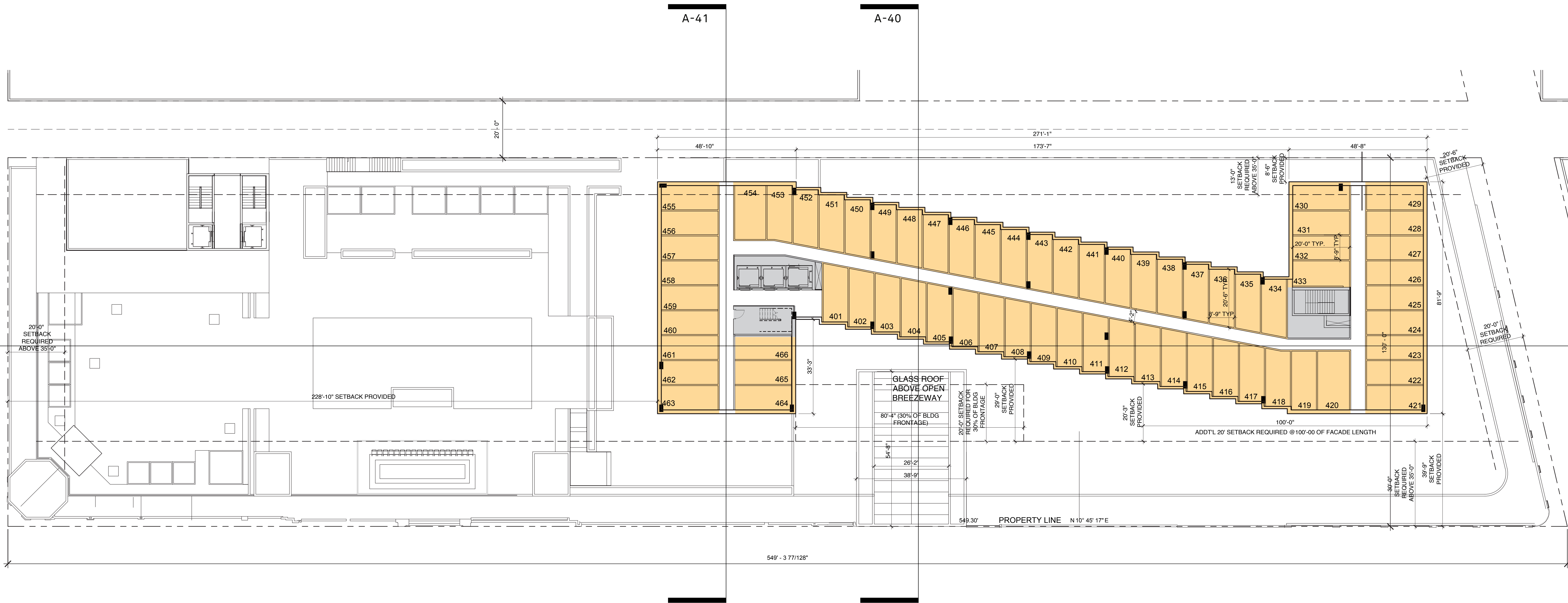




FLOOR 3:
 34 HOTEL ROOMS
 MIN ROOM SIZE 184 GSF

REVISED





FLOOR 4: 66 HOTEL ROOMS
26 TYPE A* ROOMS: 182 GSF MIN ROOM NUMBERS 419, 421-433, 455-464
2 TYPE A* ROOMS: 250 GSF ROOM NUMBERS 420, 454
38 TYPE B* ROOMS: 190 GSF MIN ROOM NUMBERS 401-418, 434-453

FLOOR 5: 66 HOTEL ROOMS
26 TYPE A* ROOMS: 182 GSF MIN ROOM NUMBERS 519, 521-533, 555-564
2 TYPE A* ROOMS: 250 GSF ROOM NUMBERS 520, 554
38 TYPE B* ROOMS: 190 GSF MIN ROOM NUMBERS 501-518, 534-553

FLOOR 6: 66 HOTEL ROOMS
26 TYPE A* ROOMS: 182 GSF MIN ROOM NUMBERS 619, 621-633, 655-664
2 TYPE A* ROOMS: 250 GSF ROOM NUMBERS 620, 654
38 TYPE B* ROOMS: 190 GSF MIN ROOM NUMBERS 601-618, 634-653

FLOOR 7: 66 HOTEL ROOMS
26 TYPE A* ROOMS: 182 GSF MIN ROOM NUMBERS 719, 721-733, 755-764
2 TYPE A* ROOMS: 250 GSF ROOM NUMBERS 720, 754
38 TYPE B* ROOMS: 190 GSF MIN ROOM NUMBERS 701-718, 734-753

*SEE A-38 FOR ENLARGED FLOOR PLANS OF UNIT TYPES A AND B



Morris Adjmi Architects
www.ma.com
O'Brien Lighting Inc

Washington Squared LLC
Ken Fulk

Raymond Jungles Inc.
Nichols Brosch
Wurst Wolfe &
Associates

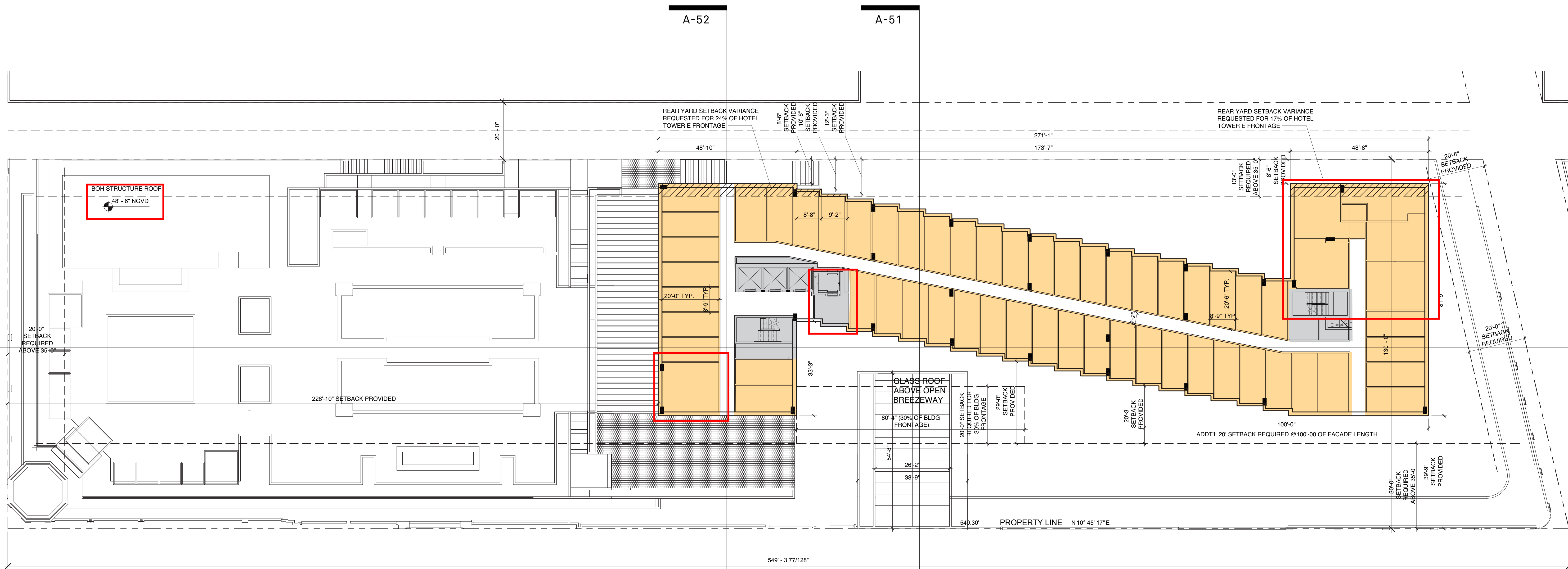
601-685 Washington Ave.
Miami Beach, FL

4th - 7th Floor Plans - Hotel

Planning Board Final Submittal / 2 March 2016

APPROVED

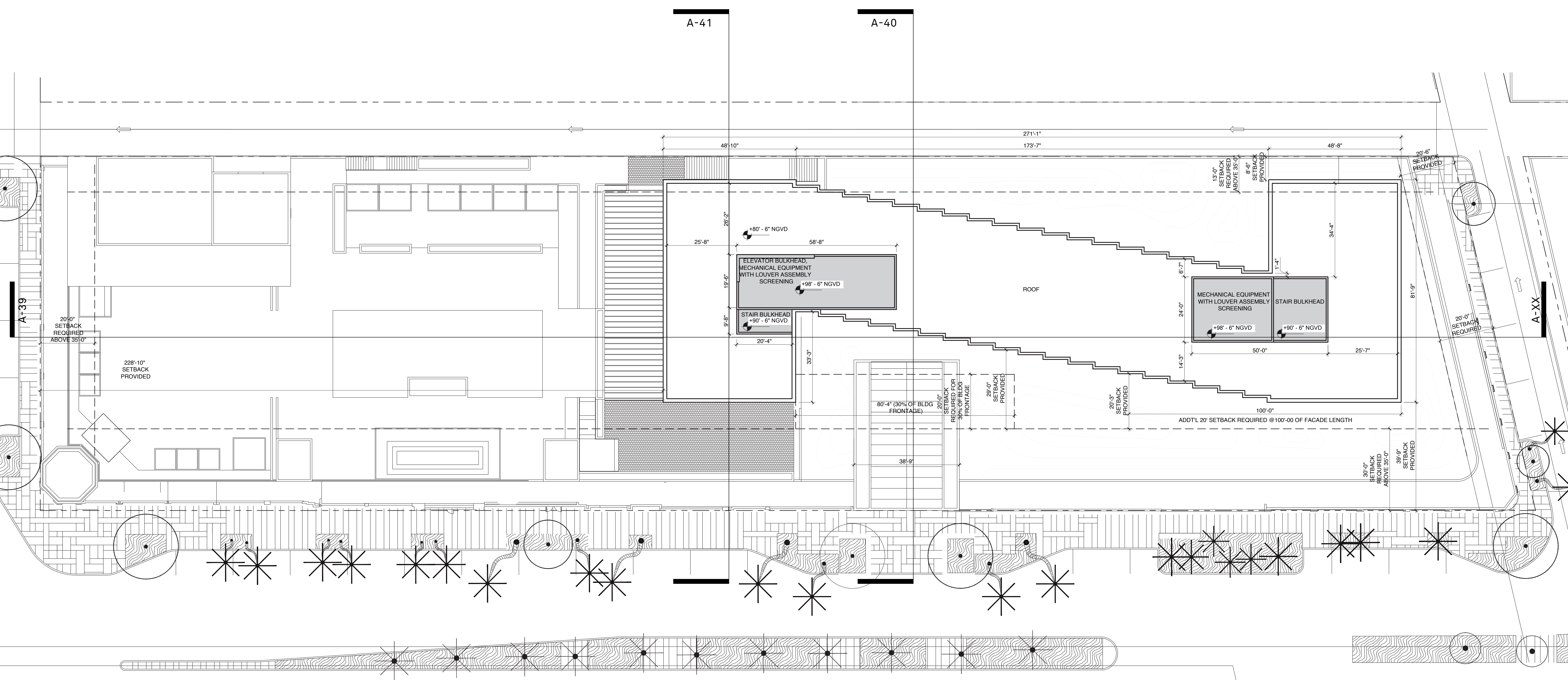




TYP FLOOR:
61 HOTEL ROOMS
MIN ROOM SIZE 184 GSF

REVISED





Morris Adjmi Architects
www.ma.com
O'Brien Lighting Inc

Washington Squared LLC
Ken Fulk

Raymond Jungles Inc.
Nichols Brosch
Wurst Wolfe &
Associates

601-685 Washington Ave.
Miami Beach, FL

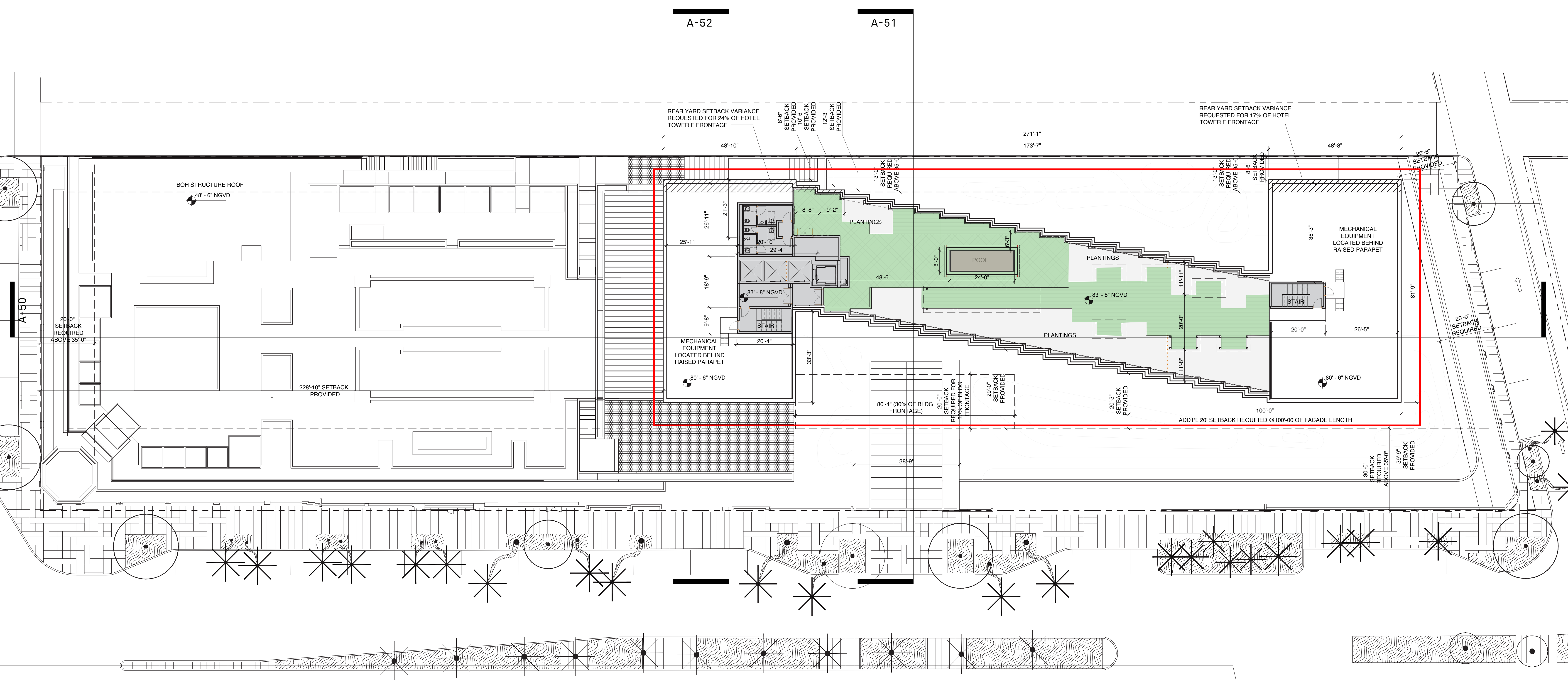
Roof Plan

Planning Board Final Submittal / 2 March 2016

APPROVED

0' 10' 25' 50'





Morris Adjmi Architects
www.ma.com
O'Brien Lighting Inc

Washington Squared LLC
Ken Fulk

Raymond Jungles Inc.
Nichols Brosch
Wurst Wolfe &
Associates

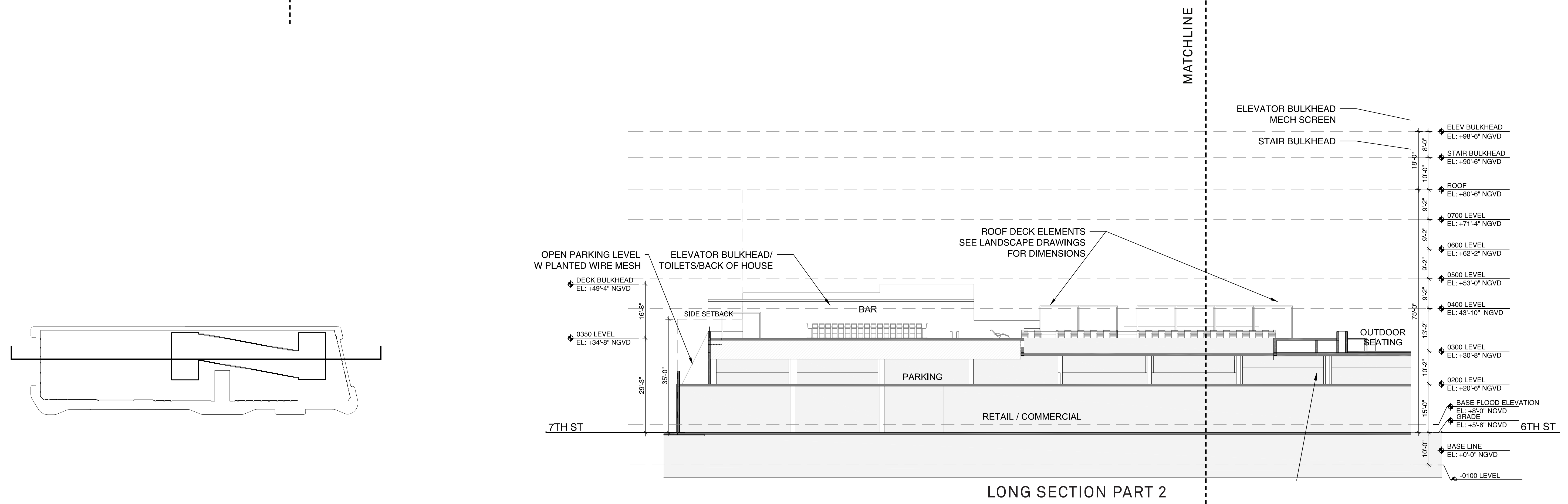
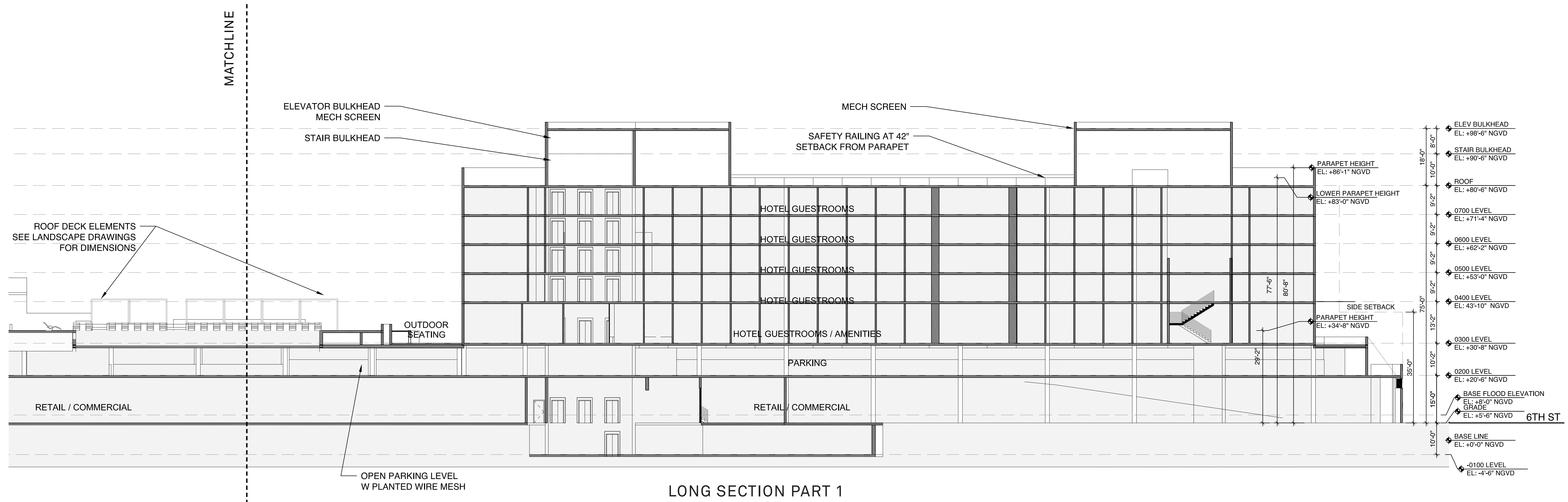
601-685 Washington Ave.
Miami Beach, FL

Roof Plan

Planning Board Modification - Final Submittal / 28 November 2016

REVISED





Morris Adjmi Architects
www.ma.com
O'Brien Lighting Inc

Washington Squared LLC
Ken Fulk

Raymond Jungles Inc.
Nichols Brosch
Wurst Wolfe &
Associates

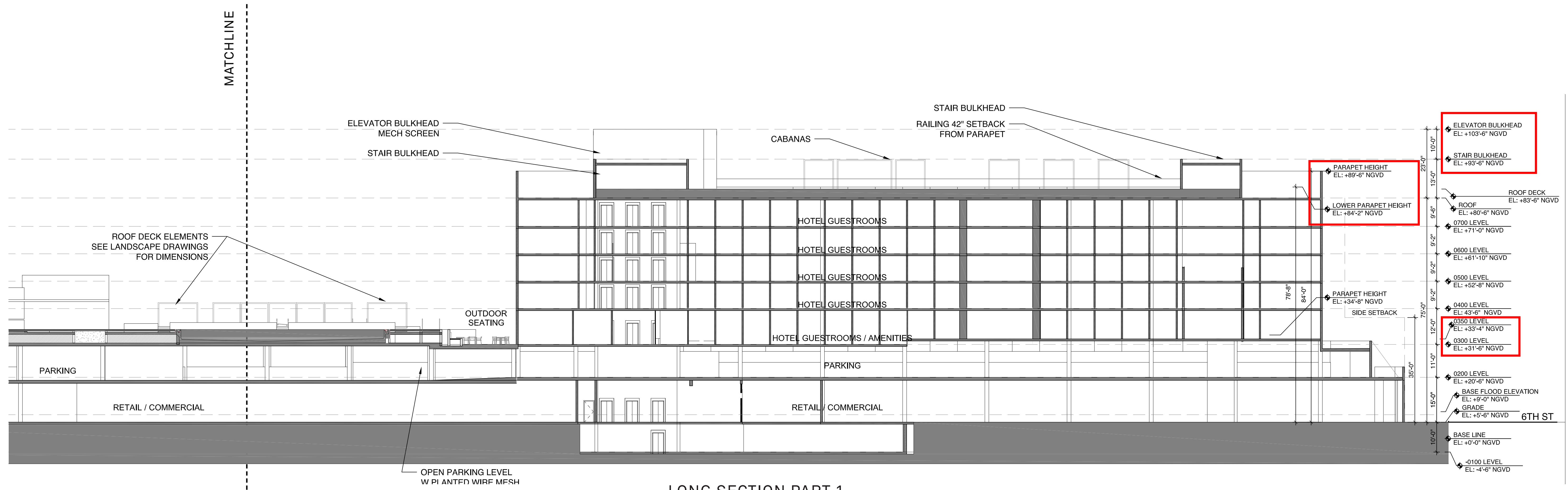
601-685 Washington Ave.
Miami Beach, FL

Bldg Section

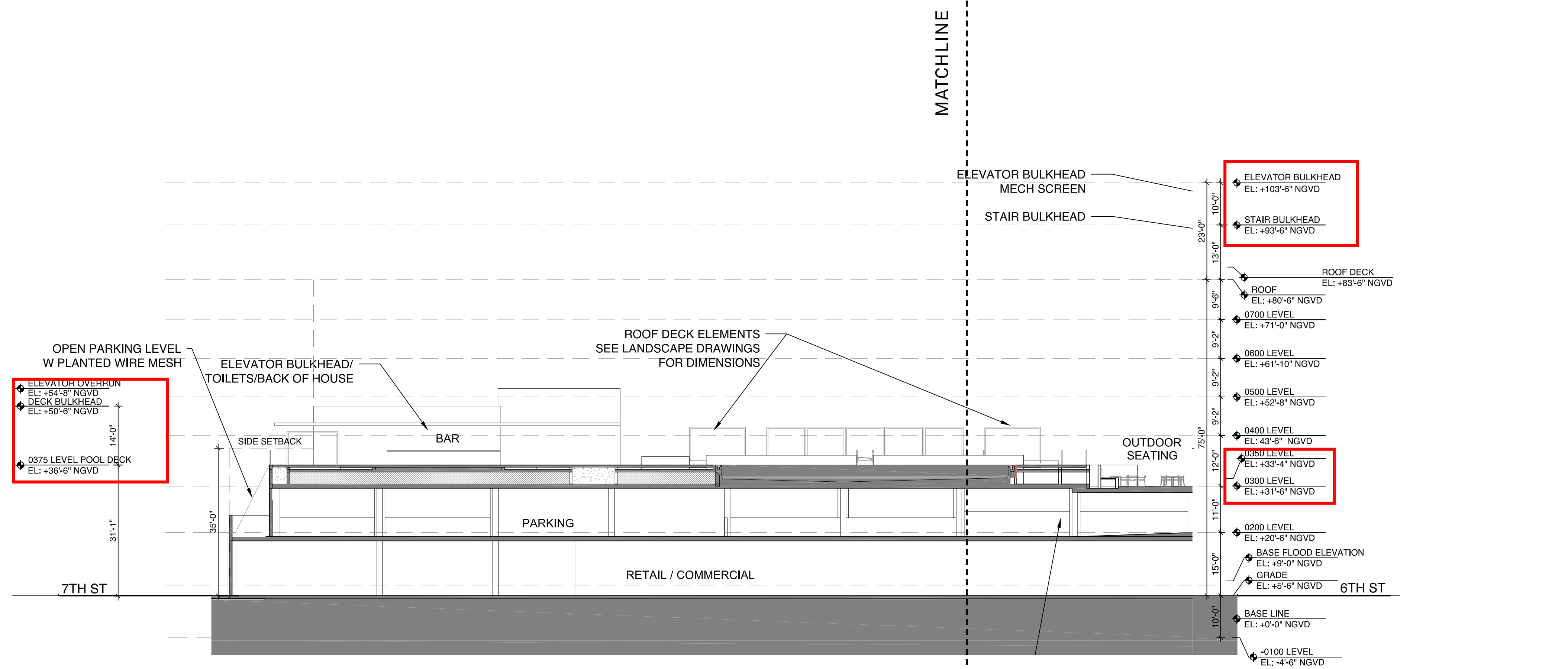
Planning Board Final Submittal / 2 March 2016

APPROVED

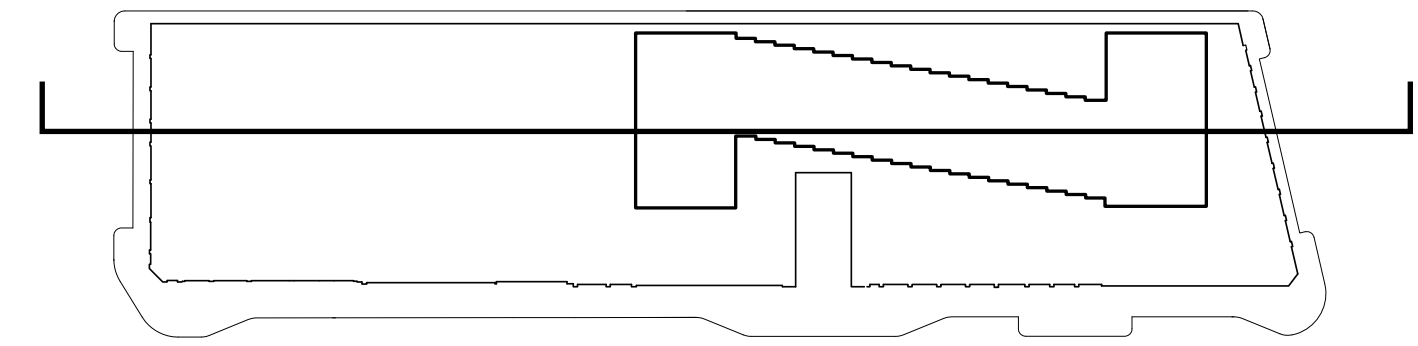




LONG SECTION PART 1



LONG SECTION PART 2



Morris Adjmi Architects
www.ma.com
O'Brien Lighting Inc

Washington Squared LLC
Ken Fulk

Raymond Jungles Inc.
Nichols Brosch
Wurst Wolfe &
Associates

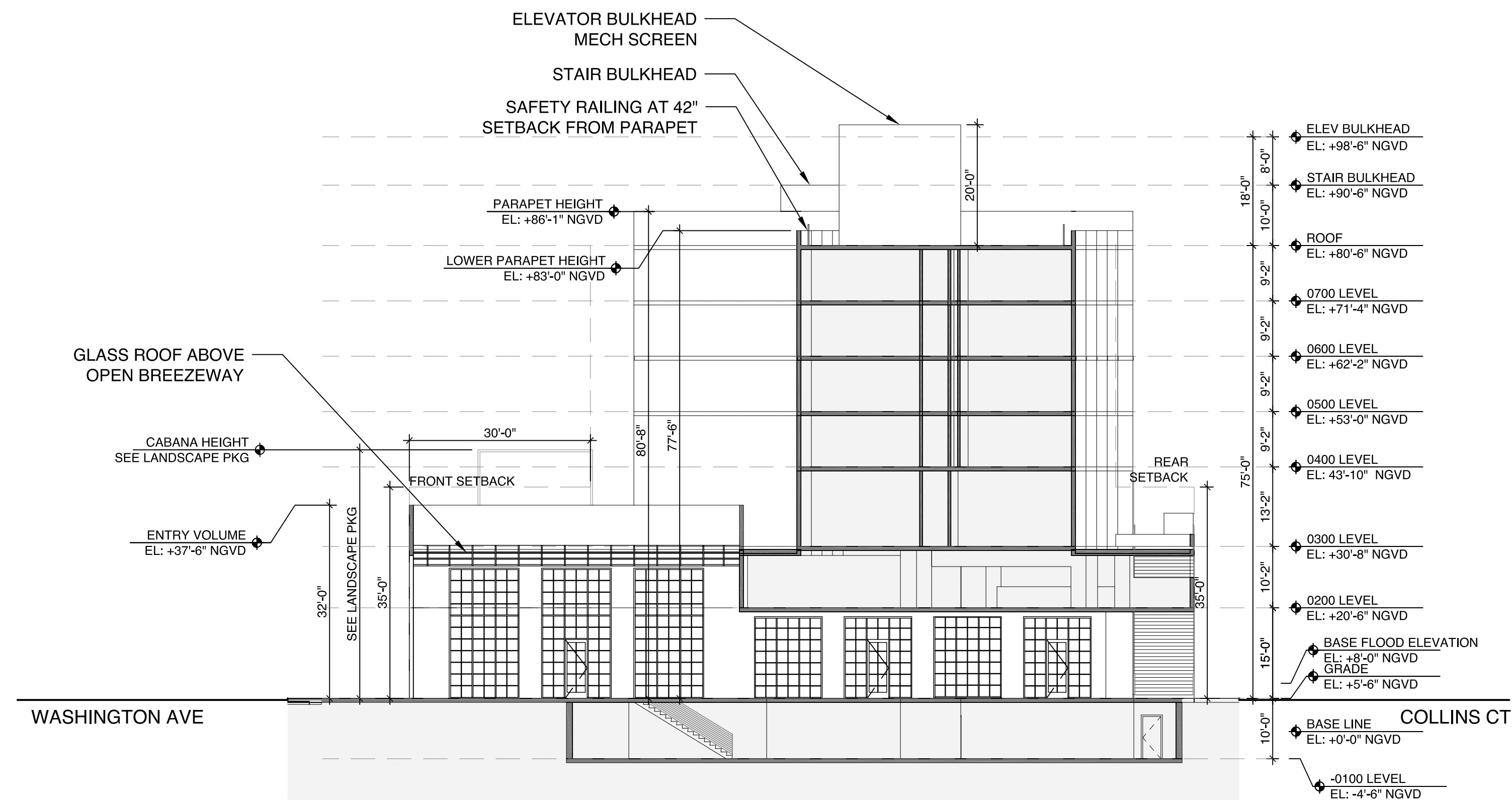
601-685 Washington Ave.
Miami Beach, FL

Bldg Section

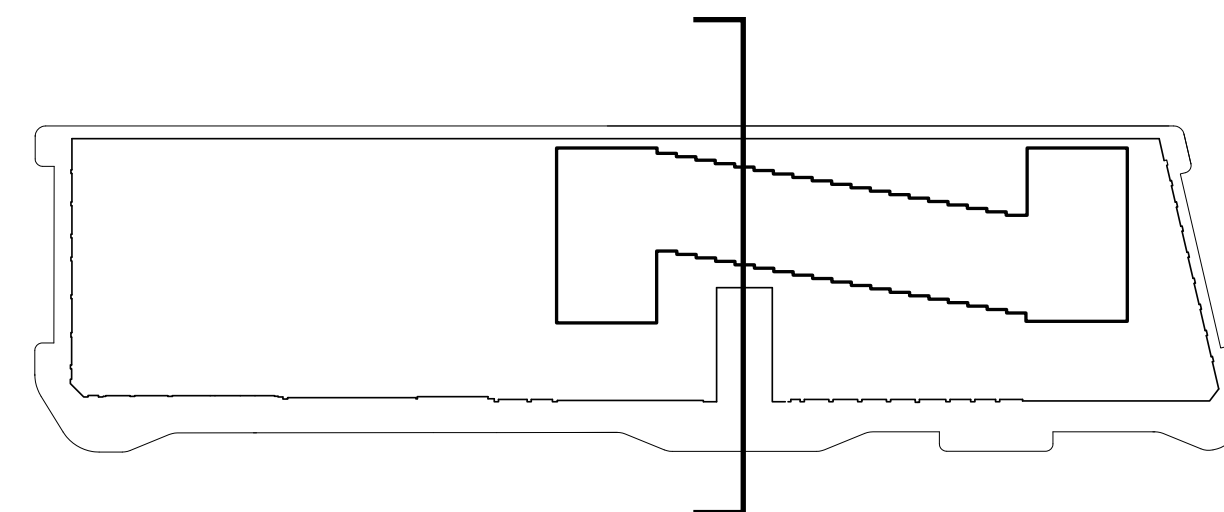
Planning Board Modification - Final Submittal / 28 November 2016

REVISED





SHORT SECTION 1



Morris Adjmi Architects
www.ma.com
O'Brien Lighting Inc

Washington Squared LLC
Ken Fulk

Raymond Jungles Inc.
Nichols Brosch
Wurst Wolfe &
Associates

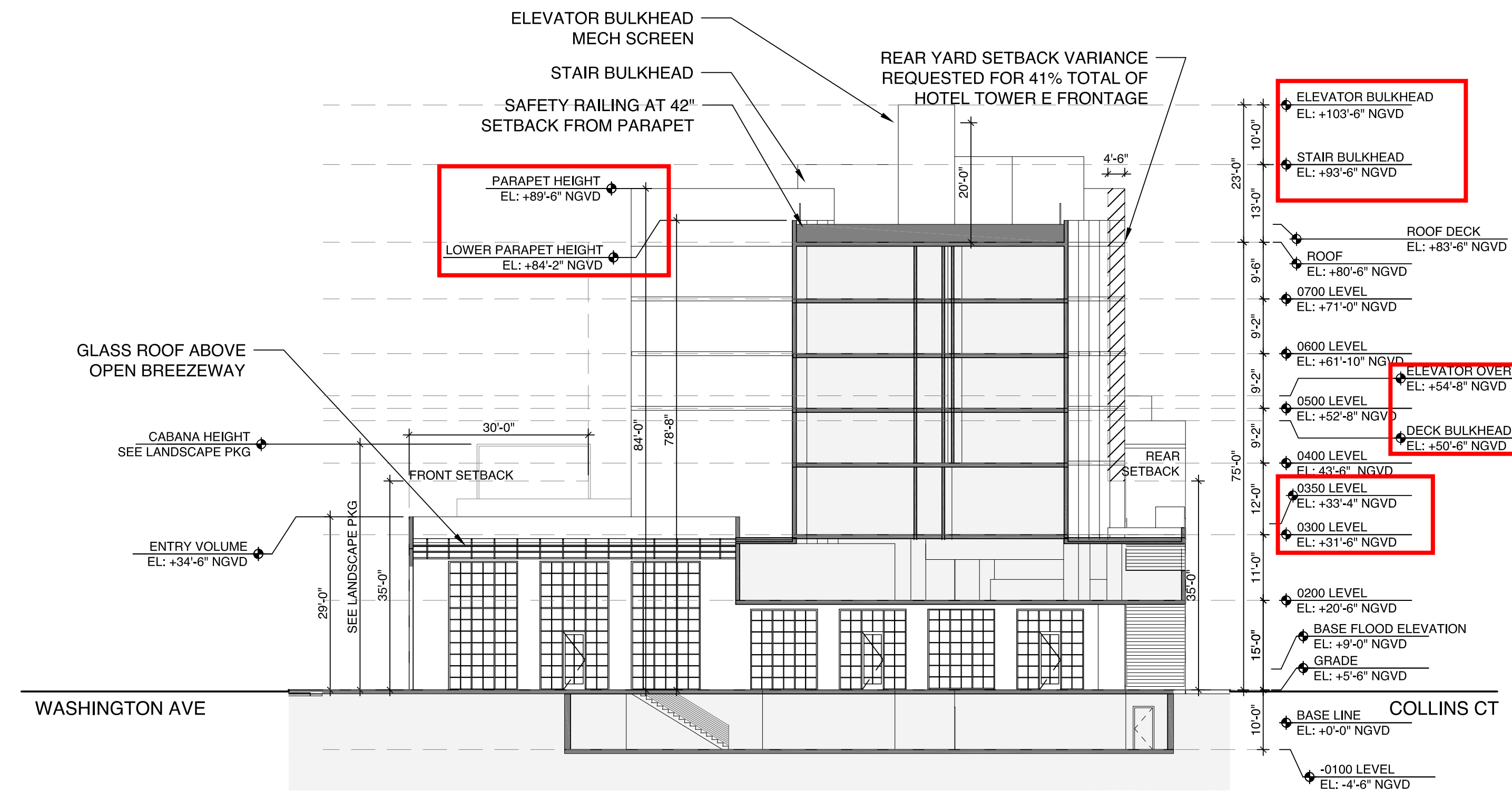
601-685 Washington Ave.
Miami Beach, FL

Bldg Section

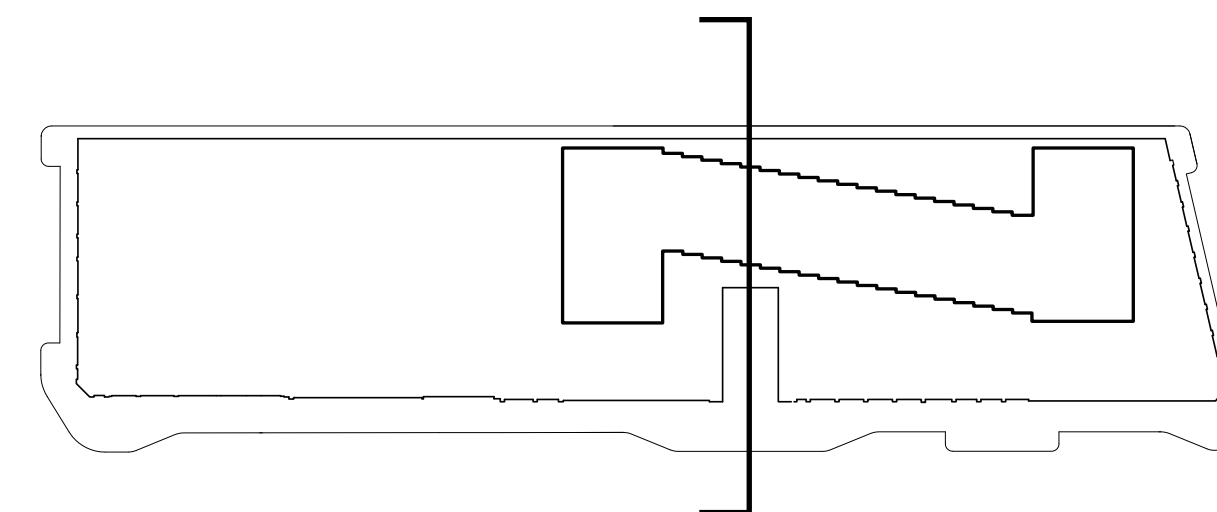
Planning Board Final Submittal / 2 March 2016

APPROVED





SHORT SECTION 1



Morris Adjmi Architects
www.ma.com
O'Brien Lighting Inc

Washington Squared LLC
Ken Fulk

Raymond Jungles Inc.
Nichols Brosch
Wurst Wolfe &
Associates

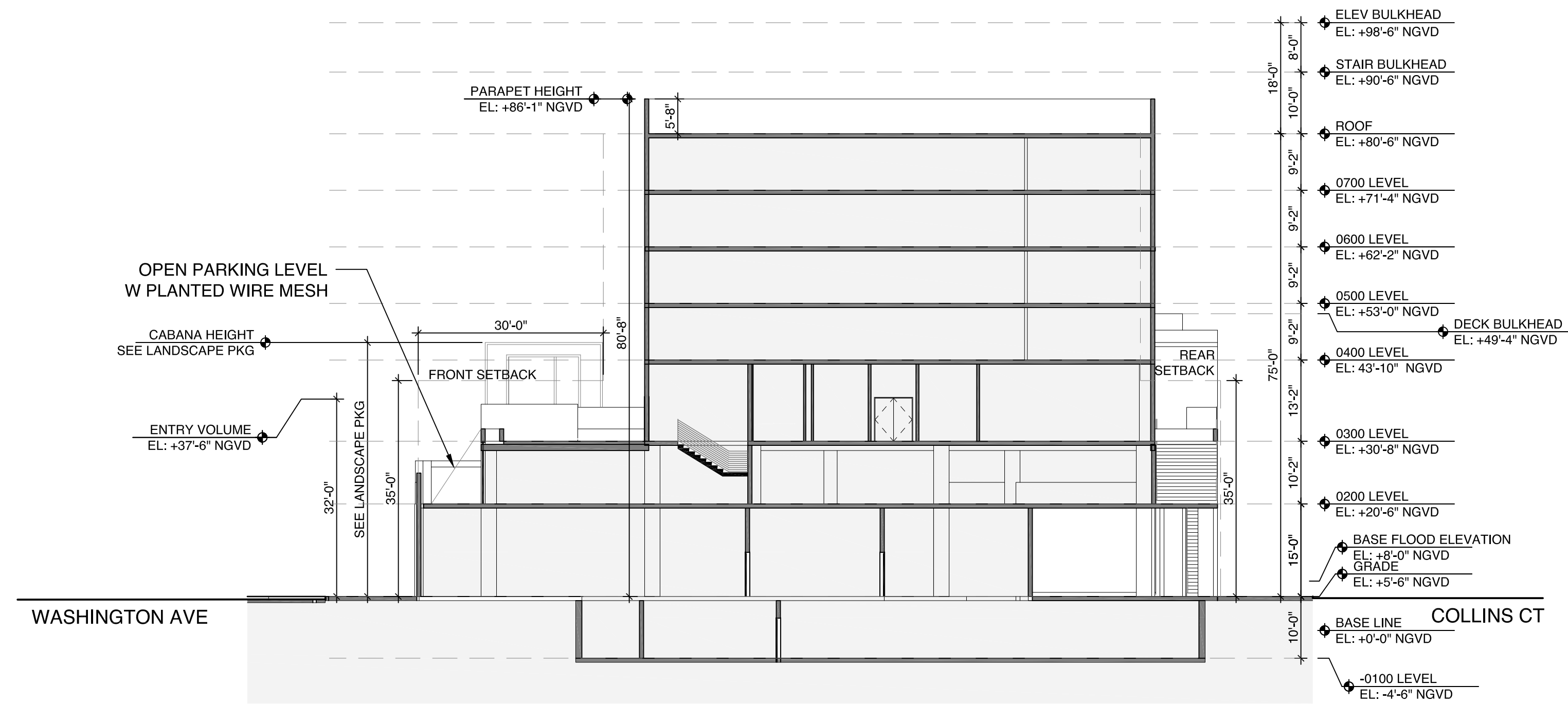
601-685 Washington Ave.
Miami Beach, FL

Bldg Section

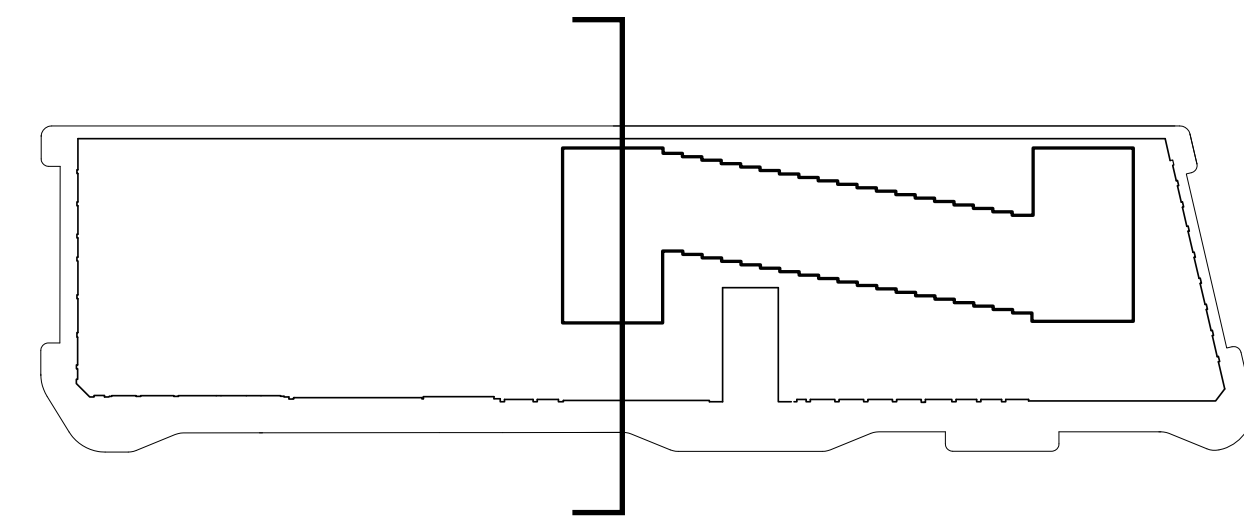
Planning Board Modification - Final Submittal / 28 November 2016

REVISED





SHORT SECTION 2



Morris Adjmi Architects
www.ma.com
O'Brien Lighting Inc

Washington Squared LLC
Ken Fulk

Raymond Jungles Inc.
Nichols Brosch
Wurst Wolfe &
Associates

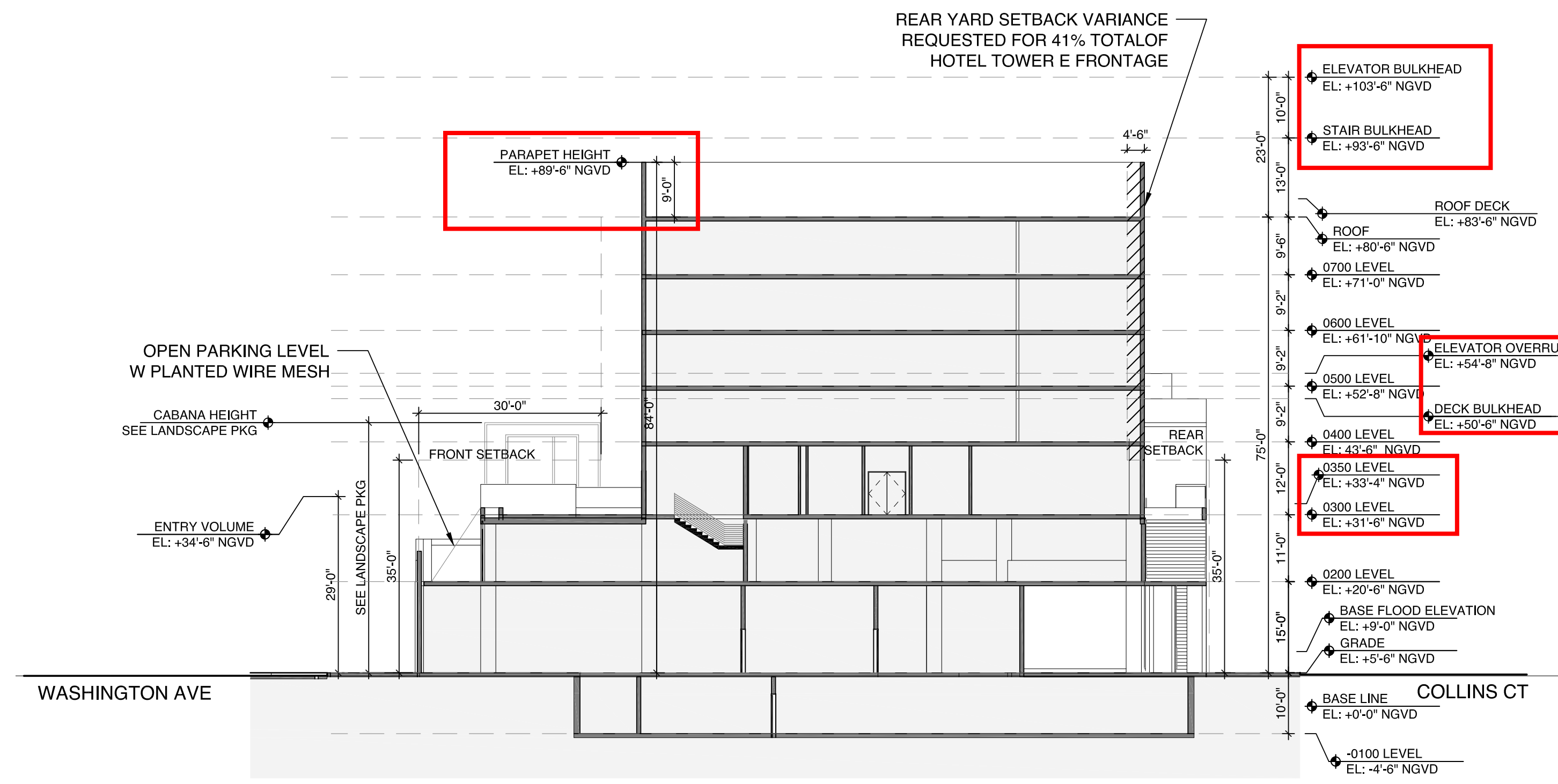
601-685 Washington Ave.
Miami Beach, FL

Bldg Section

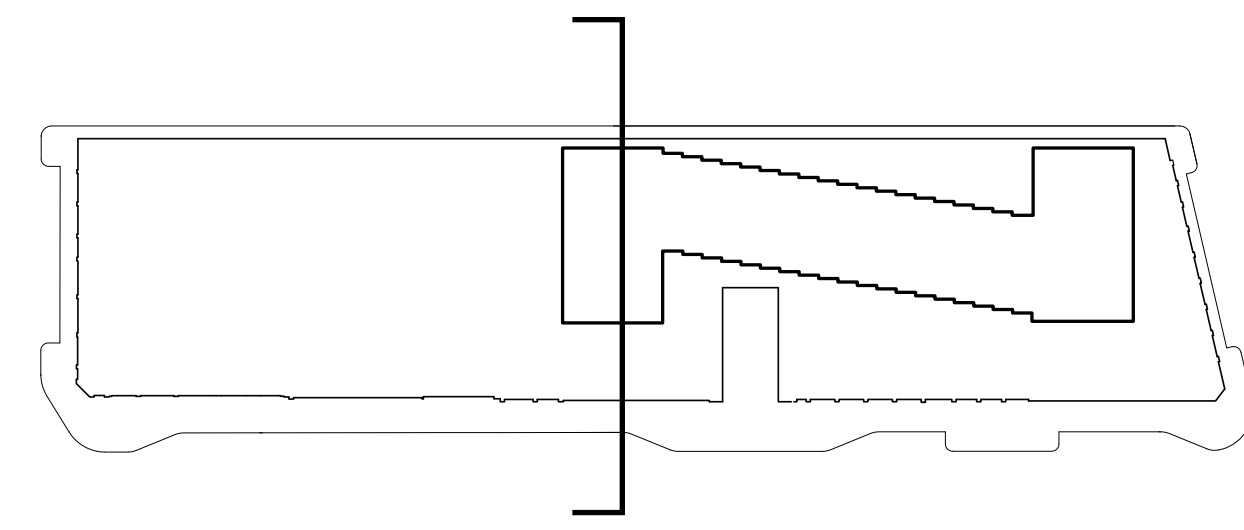
Planning Board Final Submittal / 2 March 2016

APPROVED





SHORT SECTION 2



Morris Adjmi Architects
www.ma.com
O'Brien Lighting Inc

Washington Squared LLC
Ken Fulk

Raymond Jungles Inc.
Nichols Brosch
Wurst Wolfe &
Associates

601-685 Washington Ave.
Miami Beach, FL

Bldg Section

Planning Board Modification - Final Submittal / 28 November 2016

REVISED





Morris Adjmi Architects
www.ma.com
O'Brien Lighting Inc

Washington Squared LLC
Ken Fulk

Raymond Jungles Inc.
Nichols Brosch
Wurst Wolfe &
Associates

601-685 Washington Ave.
Miami Beach, FL

Rendering: Perspective from NW

Planning Board Final Submittal / 2 March 2016

APPROVED



Morris Adjmi Architects
www.ma.com
O'Brien Lighting Inc

Washington Squared LLC
Ken Fulk

Raymond Jungles Inc.
Nichols Brosch
Wurst Wolfe &
Associates

601-685 Washington Ave.
Miami Beach, FL

Rendering: Perspective from NW

Planning Board Modification - Final Submittal / 28 November 2016

REVISED



Morris Adjmi Architects
www.ma.com
O'Brien Lighting Inc

Washington Squared LLC
Ken Fulk

Raymond Jungles Inc.
Nichols Brosch
Wurst Wolfe &
Associates

601-685 Washington Ave.
Miami Beach, FL

Rendering: Perspective From SW

Planning Board Final Submittal / 2 March 2016

APPROVED