

**Shore Club**  
**Memorandum Re: Corner Glazing at Front Façade**  
**April 6, 2022**  
**Prepared by Heritage Architectural Associates**

This document was prepared in response to the comments made at the Historic Preservation Board (HPB) hearing on March 8, 2022 regarding the corner glazing at the Shore Club front façade. HPB member Kirk Pascal commented that the glazing formerly located at the corner windows within the vertical eyebrow was distinctive. He referred to it as “Flutex” glass. He speculated that this glazing was removed during the 1999-2001 renovation.

Five windows are located adjacent a staircase at the north corner of the westernmost plane of the front façade. The windows are recessed, and an undulating vertical eyebrow winds around the window openings. In addition to the location at the corner of the façade, each window has a corner within the recessed opening.



*Figure 1. Detail of existing corner windows, 2022.*



*Figure 2. Detailed close-up of corner window, 2022.*

## Investigation

Historic photographs from the 1950s were examined. In addition, Debbie Tackett, Historic Preservation Officer for the City of Miami Beach, provided a color photograph of the Shore Club that was taken in 1989. Based upon review of this historic photographic documentation, it was determined that the type of glazing at the corner windows appeared to have a vertical ribbed pattern. In addition, it was determined that the current metal muntins appear to be wider than the original muntins.



Figure 3. View of corner windows at Shore Club, c. 1951.



Figure 4. View of corner windows at Shore Club, 1956.



Figure 5. View of corner windows at Shore Club, c. 1956.

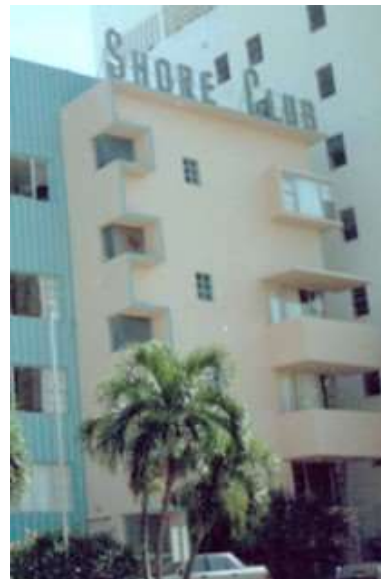


Figure 6. View of corner windows at Shore Club, 1989.



*Figure 7. Closeup detail of corner windows at Shore Club, c. 1956.*

## **Flutex Glass**

Based upon the above referenced historic photographic documentation, research was conducted regarding Flutex glass. It was determined that this type of glass was in use in 1949. Flutex glass was manufactured by the Blue Ridge Glass Corporation and was marketed by Libbey-Owens-Ford Glass Company of Toledo, Ohio. Flutex was available with a ground and polished surface or a “Satinol” surface, which appears to have had a milky appearance.

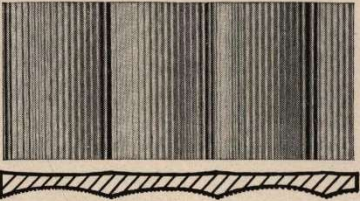


## five leading BLUE RIDGE patterns

these smart patterns enable

*Architects and Designers*

to create pleasing and desirable interiors and exteriors



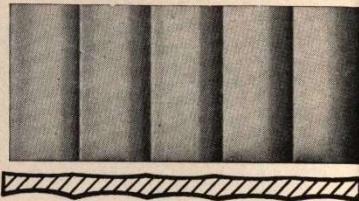
**Stylox**  
(Cross section shown, actual size)

A rolled flat glass, with one smooth side and one pattern side consisting of curved parallel concave waves about  $\frac{3}{4}$ " deep. The crest of the waves are about  $\frac{3}{4}$ " apart, the surface of each being striated with approximately 15 small equidistant ribs about  $\frac{1}{1000}$ " deep and parallel to the crests.

Made in  $\frac{1}{8}$ " and  $\frac{3}{16}$ " thicknesses with fire-polished, ground and polished and Satinol finishes.

Approximate Light Transmission—unwired 73% (not made in wire glass).

USES—Decorative interior installations for partitions, wall panels, kitchen cupboard doors.



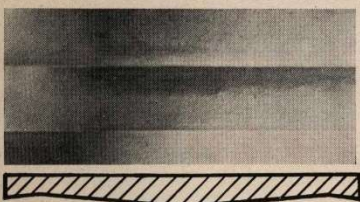
**Linex**  
(Cross section shown, actual size)

A rolled flat glass, one surface being smooth and the pattern side consisting of curved parallel concave flutes measuring about  $\frac{3}{4}$ " deep. The crests of the flutes are approximately  $\frac{1}{2}$ " apart.

Linex is made in  $\frac{1}{8}$ " and  $\frac{3}{16}$ " thicknesses in fire-polished, ground and polished and Satinol finishes.

Approximate Light Transmission—unwired 80% (not made in wire glass).

USES—Decorative interior and exterior glazing.



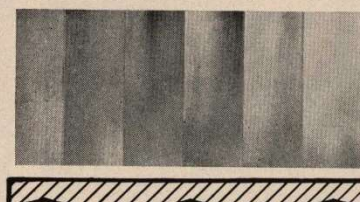
**Louvrex**  
(Cross section shown, actual size)

1 in. wide, alternately ascending and descending, plane-surfaced strips, resembling louvers in venetian blinds. Quite transparent, but Satinol finish increases obscurity and diffusion.

Made  $\frac{1}{8}$ " and  $\frac{3}{16}$ " thick with fire-finished surfaces and  $\frac{3}{16}$ " thick only with flat surface mechanically ground and polished; also with flat surface Satinol processed.

Approximate Light Transmission—unwired 90.4% (not made in wire glass).

USES—Interior and exterior glazing, partitions, transoms etc.



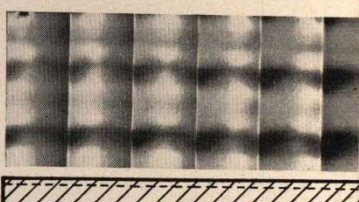
**Flutex**  
(Cross section shown, actual size)

Pattern consists of adjoining convex flutes 1 in. wide.

Made in  $\frac{1}{8}$ " and  $\frac{3}{16}$ " thicknesses with fire-polished surfaces, and in  $\frac{3}{16}$ " thickness only with flat surface mechanically ground and polished; also with flat surface Satinol processed.

Approximate Light Transmission—unwired 89% (not made in wire glass).

USES—Same as those of Louvrex. Provides effect of sharper, more definite pattern. (Note: Satinol Flutex,  $\frac{3}{16}$ " thick, is widely used in fluorescent light fixtures).



**Doublex**  
(Cross section shown, actual size. Broken line indicates right angle corrugation on back)

A double patterned glass whose corrugated design on one surface runs at right angles to fluted design on other surface, forming a pronounced directional effect.

Made in  $\frac{3}{16}$ " thickness, with maximum width of 54" and length of 136".

Approximate Light Transmission—87%.

USES—Interior and exterior glazing, partitions, screens, illuminated wall panels and other decorative purposes.

**specifications for five leading Blue Ridge glass patterns**

Product	Uses	Light Diffusion and Obscurity	Pattern	Thick-ness	Plain Rolled, Fire Finish, Max. Width and Length	Surface			Approx. Weight, Sq. Ft. Lbs. Glass Only
						Ground and Polished flat surface	Frosted Max. Width and Length	Satinol Max. Width and Length	
Louvrex	Decorative Interior and Exterior use	Slight	Alternate 1" angular planes	$\frac{1}{8}$ "	54" x 132"			54" x 132"	1 $\frac{3}{4}$ lbs.
Flutex	Decorative Interior and Exterior use	Slight	Adjoining 1" convex flutes	$\frac{3}{16}$ "	54" x 136"	54" x 136"		54" x 136"	2 $\frac{3}{4}$ lbs.
				$\frac{1}{8}$ "	54" x 132"		54" x 132"	1 $\frac{3}{4}$ lbs.	
Doublex	Decorative Interior and Exterior use	Good	1" Block pattern	$\frac{3}{16}$ "	54" x 136"	54" x 136"		54" x 136"	2 $\frac{3}{4}$ lbs.
				$\frac{1}{8}$ "	54" x 136"		54" x 136"	2 $\frac{3}{4}$ lbs.	
Stylox	Decorative Interior use	Medium (Directional Spread)	Fine ribs on flute	$\frac{1}{8}$ "	48" x 132"		48" x 132"	48" x 132"	1 $\frac{3}{4}$ lbs.
				$\frac{3}{16}$ "	48" x 136"	48" x 136"	48" x 136"	2 $\frac{3}{4}$ lbs.	
Linex	Decorative Interior and Exterior use	Slight	$\frac{1}{4}$ " Concave flutes	$\frac{1}{8}$ "	48" x 132"		48" x 132"	48" x 132"	1 $\frac{3}{4}$ lbs.
				$\frac{3}{16}$ "	48" x 136"	48" x 136"	48" x 136"	2 $\frac{3}{4}$ lbs.	

\*In some patterns, widths are available up to 60 inches, depending upon stocks on hand, but glass wider than 48 inches cannot be Frosted.

Figure 8. Product information for Flutex glass, 1949.  
 (from Glass – Data for the Architect, Libbey-Owens Ford Glass Company, 1949)



*Figure 9. Samples of Flutex Glass in polished and Satinol finishes, date unknown.*



## Design Recommendation

It is our recommendation that the glazing located at the corner windows within the vertical eyebrow be restored to the era of significance based upon historic photographic documentation. The design intent is to replicate the appearance of the historic glass in this location. The product identified below, or another similar product, should be utilized in this location. Due to contemporary code requirements, glazing assemblies utilized must have a Notice of Acceptance from Miami-Dade County. Additionally, the metal muntins should be narrower than the existing to more closely match the historic appearance of the windows.

**Product: Morue Flutex (3/4)**

<https://glassupply.com/shop/morue-flutex-3-4/>



*Figure 10. Example of product similar to historic glass at corner windows.*