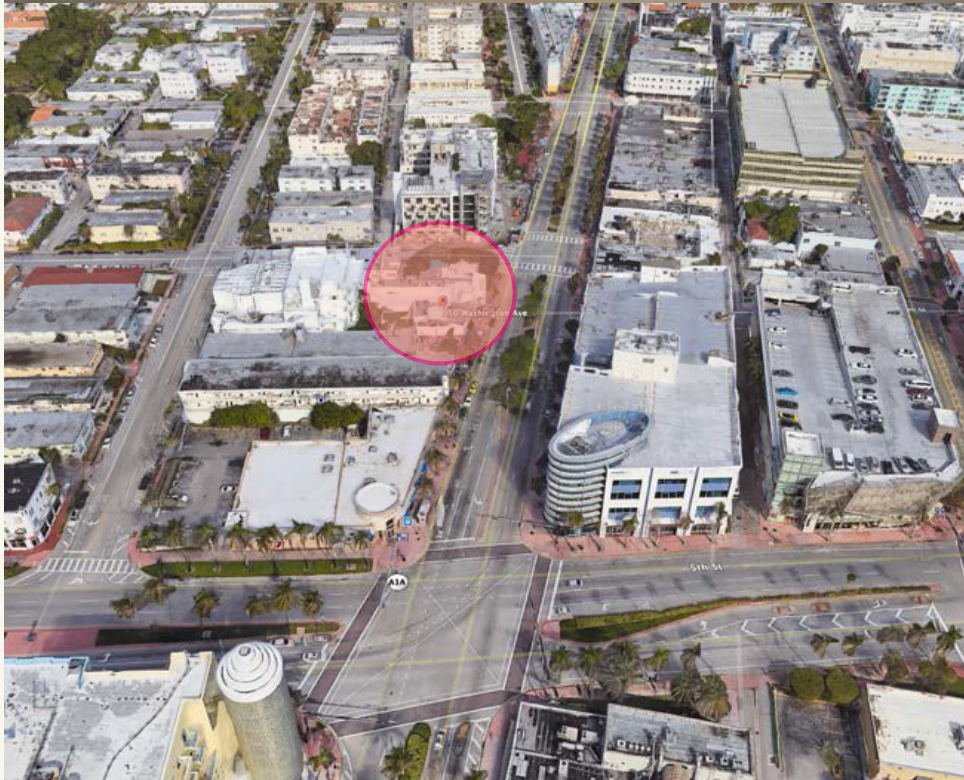


# QUEEN



1927

Location of the future  
**Variety Theater**



ADDRESSES

550 Washington Avenue  
539 Euclid Avenue

NAMES

Variety aka Paris  
aka New Paris Theater

DATE OF CONSTRUCTION

Theater in 1945  
Adjoining stores in 1937

ARCHITECT

Henry hohausen

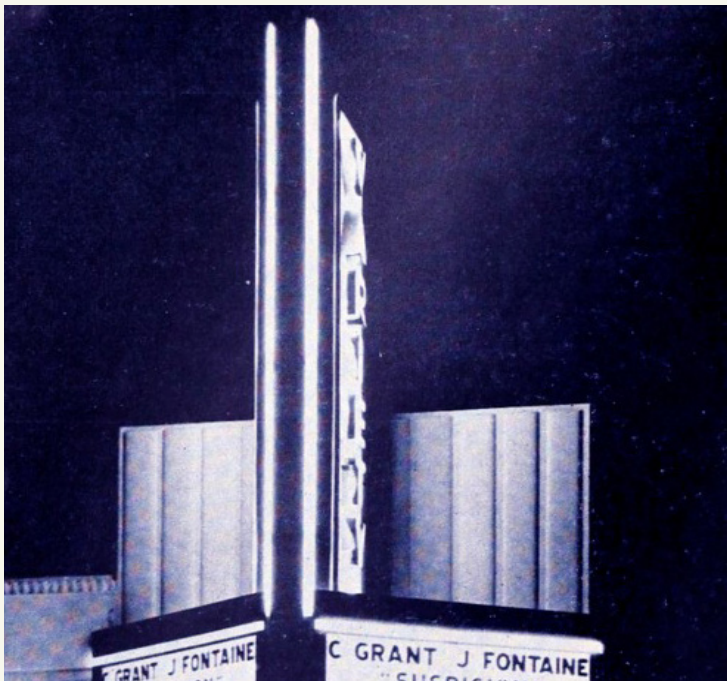
ARCHITECTURAL STYLE

Mimo / Miami Modern

LOCATED IN THE

\* 1979 national register miami  
beach architectural district  
\* 1989 miami beach flamingo  
park local historic district

2020



550 Washington Avenue was designed by the noted Miami Beach Architect Henry Hohauser.

Opened originally as the **Variety Theater** (June 20, 1946) as a classic movie revival theater, it was renamed The New Paris Theater (October 13, 1961), retaining its original Variety vertical sign, while a new marquee boards displayed its new name.



1946



June 16th, 1946



1961





# 1990s

After sitting vacant for nearly a decade it became a video / film production studio for Big Time Productions as owner Eugene Rodriguez bought the 25,589-square-foot structure in 1992 for less than \$1 million and transformed it into a studio for the film and photo industry.



# 2000s

In the early 2000's the theater became a high-end nightclub called Bamboo. The space holds 350 persons at a seated dining event and 1,200 persons legally. The venue still features rooftop studios for photoshoots and production. Brands such as Polo Ralph Lauren, Vogue, Armani and Abercrombie and Fitch shoot here regularly.





# QUEEN

WELCOME TO QUEEN MIAMI BEACH

This journey begins at the heart of one of the great art forms of our modern time: Cinema.

As we travel through the space we pay homage to a variety of eras that have brought life to this original theater with touches of american mid century modern viewed with hints of asian inspiration, as well as the decadent exuberance of the 1970's, QUEEN sets the stage for an emotional journey and a tantalizing atmosphere.

GLAMOUR

MYSTERY

DECADENCE

POWER



550 Washington Ave  
Miami Beach, Florida

786.315.5015  
queenlounge.com



# QUEEN

<p><b>HORS D'OEUVRES</b></p> <p><b>WEEF TARTAR</b> Eggs, Mashed, Cream, Quail Egg</p> <p><b>HARRY WILLETED &amp; FIDE GRAS HOUSE</b> Red Wine, Minestrone, Pork</p> <p><b>WILD BOAR &amp; BOURBON FRO FERRINE</b> Cash Mustard, Cornucopia</p> <p><b>SHRIMP SEA SCALLOPS</b> Black Truffle &amp; Cash Mustard, Seafood Slough</p> <p><b>SHRIMP &amp; COQLE</b> Toasted Ham, Tomatoes, Fennel</p> <p><b>HOUSE SHOKED SALMON</b> Shrimp Fennel, Crisp Potato, Caviar, Green Peas</p> <p><b>ESCHARDT HUSH PUPPIES</b> Honey D' Baster</p>	<p><b>RAW BAR</b></p> <p><b>GRAND PLATTER</b></p> <p><b>PETITE PLATTER</b></p> <p><b>DAILY OYSTER SELECTION</b></p> <p><b>LITTLE NECK CLAMS</b></p> <p><b>JUMBO SHRIMP COCKTAIL</b></p> <p><b>TAYLOR BAY SCALLOPS</b></p> <p><b>1/2 LOBSTER</b></p> <p><b>OTRUS &amp; FENNEL KAMPACH</b></p> <p><b>FRESH ALASKAN KING CRAB</b></p>	<p><b>SOUPS &amp; SALADS</b></p> <p><b>VIDALIA ONION SOUP</b> Caramelized Onions, Ridgestone Cheese</p> <p><b>MUSHROOM &amp; CHESTNUT SOUP</b> Red Wine, Onions</p> <p><b>FRISSE SALAD</b> Crispy Country Ham, Caramelized Fried Egg, Sherry Vinaigrette</p> <p><b>CAESAR</b> Baby Red Romaine, Croutons, Shaved Onions</p> <p><b>BEEF &amp; ESCAROLE SALAD</b> Blue Cheese, Walnuts, Grain Mustard Vinaigrette</p> <p><b>POACHED SHRIMP &amp; AVOCADO SALAD</b> Macha, Citrus-Ginger Vinaigrette</p>
--	--	---

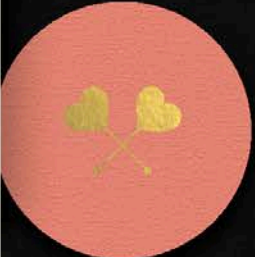
  

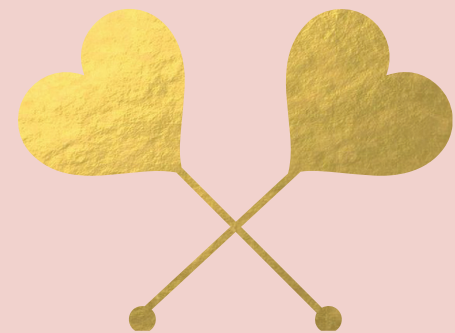
<p style="text-align: center;"><i>Steaks</i></p> <p><b>45 DAY BONE IN STRIP LOIN 14 OZ</b></p> <p><b>BONELESS RIB EYE 20 OZ</b></p> <p><b>GRASS FED TENDERLOIN 12 OZ</b></p> <p><b>TEBES MAJOR 9 OZ</b></p> <p style="text-align: center;"><i>Sauces</i></p> <p><b>BEARNAISE SAUCE</b></p> <p><b>FOIE GRAS SAUCE</b></p> <p><b>BRANDY 4 PEPPER CORN SAUCE</b></p> <p><b>RED WINE JUS</b></p>	<p style="text-align: center;"><b>ENTREES</b></p> <p><b>DRY AGED BURGER</b> Eggplant, Green Tomatoes, House Bacon, Pepper Jack, Frites</p> <p><b>WILD STRIPED BASS</b> Red Peas, Harb-Pan, Celanols</p> <p><b>SMOKED TROUT FILLET</b> Baby Beets, Citrus Pickle, Horseradish</p> <p><b>GRROUPER</b> Roasted Fennel Duxes, Bouillabaisse Sauce</p> <p><b>DUCK COUFRIT</b> Celery Root, Apple, Braising Greens</p> <p><b>POIK LOBI</b> Blackbeet Squash, Cabbage, Cider-Grain Mustard Jus</p> <p><b>CURRIED CAULIFLOWER "STEAM"</b> Raisins, Pickled Carrots, Potatichie</p> <p><b>HAND CUT PARMANDELLA</b> Roasted Lamb Shank, Potatoes</p>
--	--

<p><b>VEGETABLES</b></p> <p><b>BRUSSEL SPROUTS</b> Green Mustard, Bacon</p> <p><b>ROASTED ROOT VEGETABLE</b> Potatoes</p> <p><b>ROASTED MUSHROOMS</b> Blue Cheese</p> <p><b>GREEN BEANS</b> Sagebuns, Bitter Seeds</p> <p><b>SIDES</b></p> <p><b>POTATO</b></p> <p><b>GARLIC MASHED</b></p> <p><b>OLIVE OIL CRUSHED</b></p> <p><b>FRIES</b></p> <p><b>SWEET POTATO FRIES</b></p>	<p style="text-align: center;"><b>PLATS DU JOUR</b></p> <p><i>Monday</i> LOBSTER POT PIE</p> <p><i>Tuesday</i> BACON MAC &amp; CHEESE</p> <p><i>Wednesday</i> COUNTRY FRIED STEAK</p> <p><i>Thursday</i> COQ AU VIN</p> <p><i>Friday</i> POT ROAST</p> <p><i>Saturday</i> VEAL BLANQUETTE</p> <p><i>Sunday</i> SKATE MEUNIERE</p>	<p><b>HOUSE WINES</b></p> <p>WINE 1</p> <p>WINE 2</p> <p>WINE 3</p> <p>WINE 4</p>
--	---	---

© 2018 Queen, Inc. All Rights Reserved. Queen, Inc. | 786.315.5015 | queenlounge.com

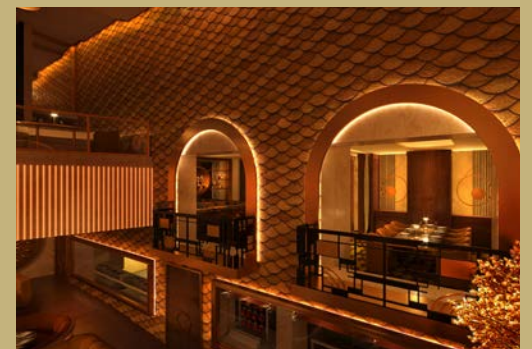














FACADE

EXISTING



PROPOSED



# EXTERIOR SIGNAGE



## FACADE

### EXISTING



### PROPOSED









# VERTICAL SIGN OPTIONS



## PROPOSED

Existing Conditions



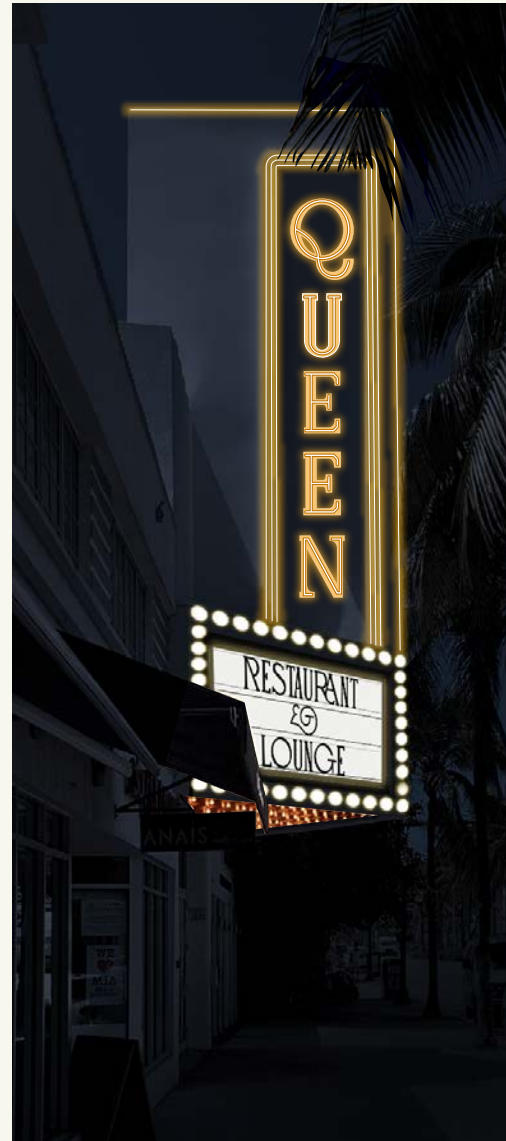
B1 | ELEVATION: South  
Scale: 3/16=1'-0"

Proposed Signage

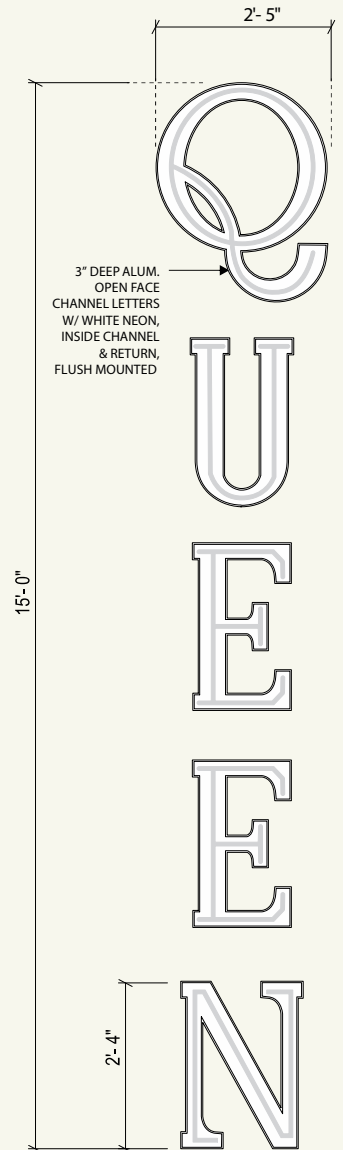


B2 | ELEVATION: South  
Scale: 3/16=1'-0"

Night View



B3 | ELEVATION: South  
Scale: 3/16=1'-0"



B4 | SPECS:  
Scale: 1/2"=1'-0"



# VERTICAL SIGN OPTIONS



## PROPOSED + ICON

Existing Conditions



B1 | ELEVATION: South  
Scale: 3/16=1'-0"

Proposed Signage

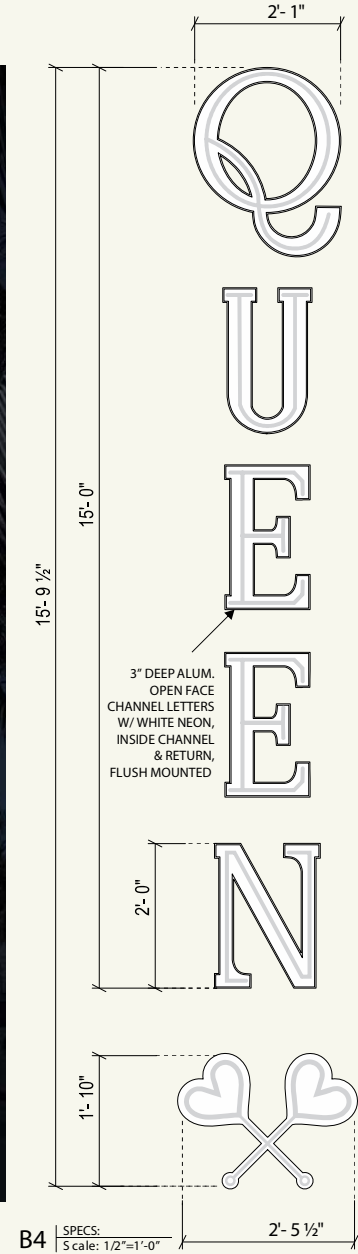


B2 | ELEVATION: South  
Scale: 3/16=1'-0"

Night View



B3 | ELEVATION: South  
Scale: 3/16=1'-0"



B4 | SPECS:  
Scale: 1/2=1'-0"

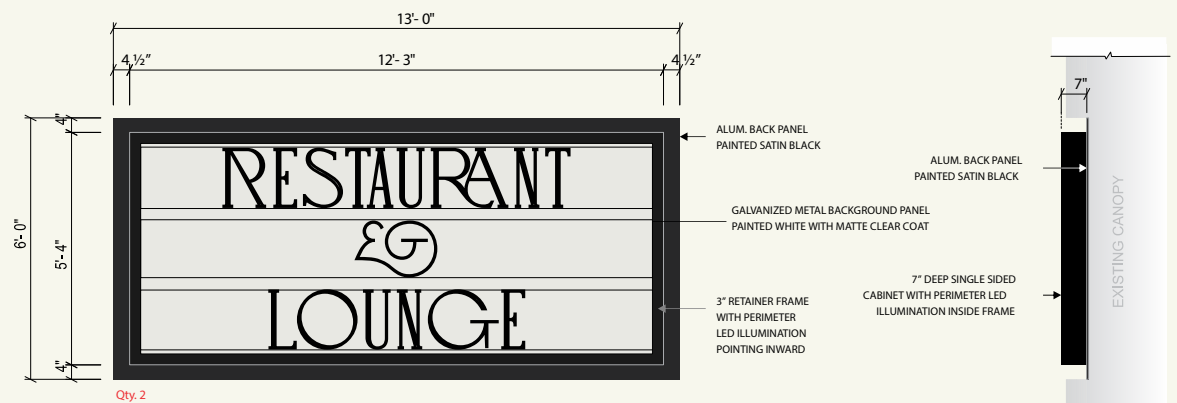
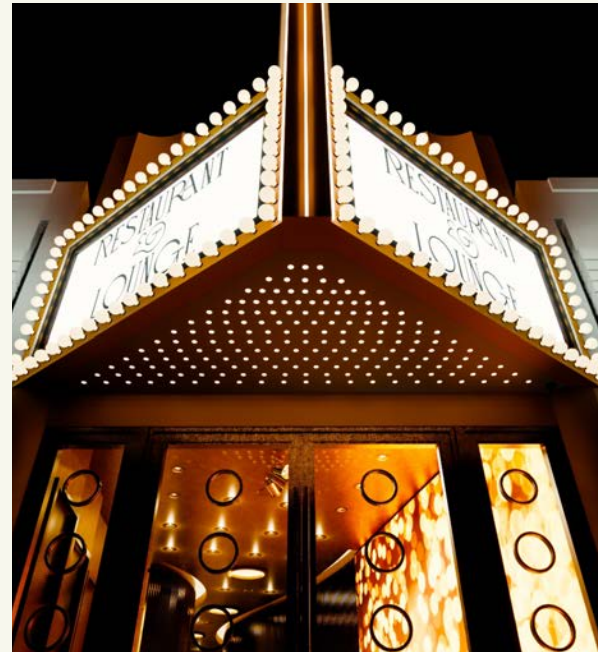
# MARQUEE SIGN + CEILING



## Proposed Signage



A1 | ELEVATION: East  
Scale: 3/16"=1'-0"



A2 | SPECS:  
Scale: 3/8"=1'-0"

A3 | SIDE VIEW:  
Scale: 3/8"=1'-0"

PROPOSED WEST FACADE









THANK YOU