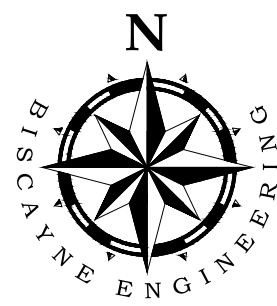


BOUNDARY & TOPOGRAPHIC SURVEY

GRAPHIC SCALE
(IN FEET)
1 INCH = 20 FT.

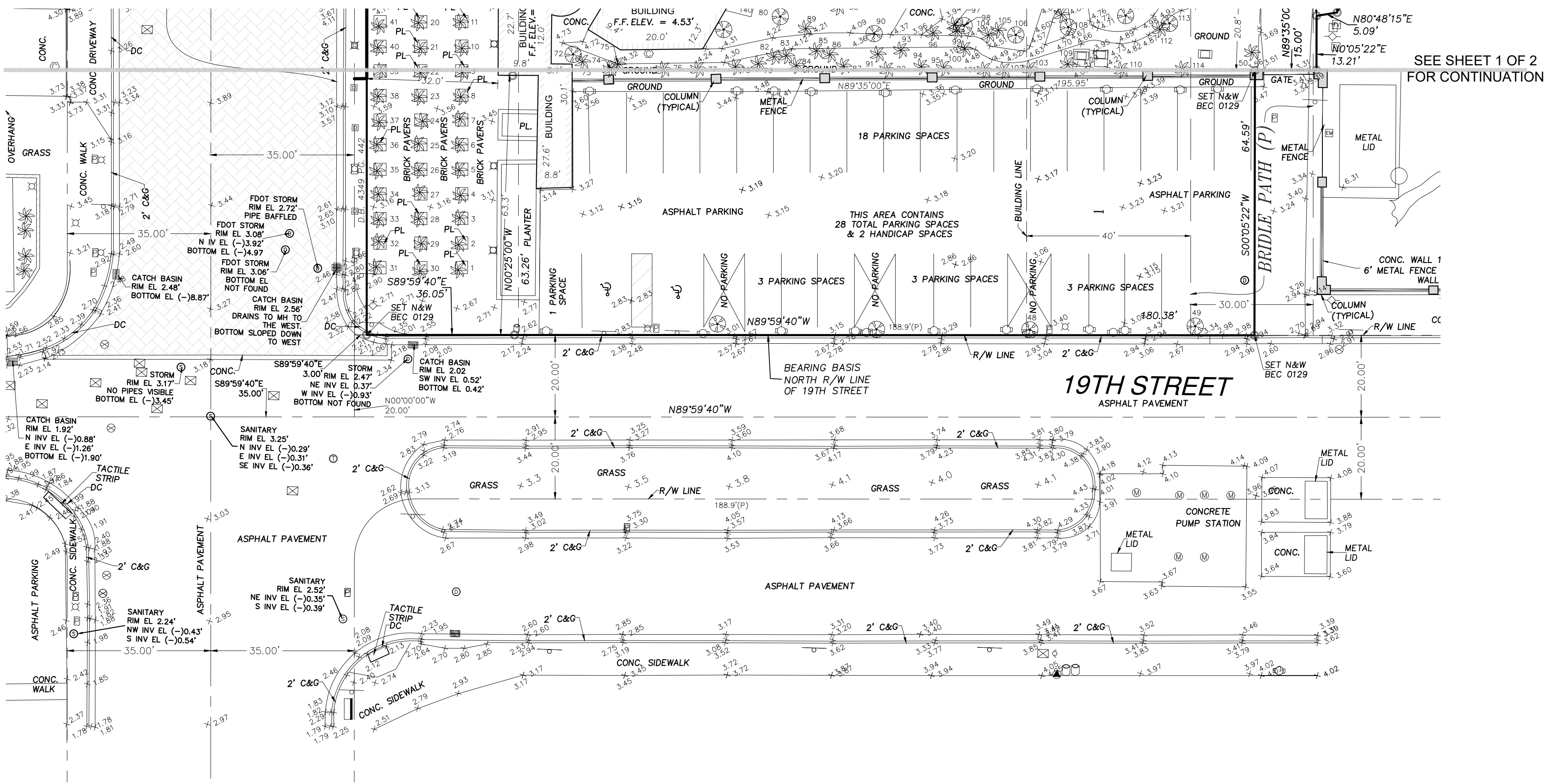


TREE TABLE

ID NUMBER	COMMON NAME	HEIGHT (FEET)	SPREAD (FEET)	DIAMETER (INCHES)
1	Queen Palm	7	5	8
2	Queen Palm	12	6	12
3	Queen Palm	10	6	10
4	Queen Palm	8	6	12
5	Queen Palm	6	6	10
6	Queen Palm		10	
7	Queen Palm	5	6	5
8	Queen Palm	8	6	5
9	Queen Palm	12	8	7
10	Queen Palm	8	7	6
11	Queen Palm	8	7	8
12	Queen Palm	10	7	6
13	Queen Palm	12	7	10
14	Queen Palm	6	3	7
15	Queen Palm	7	6	8
16	Queen Palm	10	7	12
17	Queen Palm	7	6	8
18	Queen Palm	6	6	6
19	Queen Palm	8	2	8
20	Queen Palm	6	6	8
21	Queen Palm	6	6	12
22	Queen Palm	7	6	8
23	Queen Palm	7	7	8
24	Queen Palm	8	7	8
25	Queen Palm	8	4	9
26	Queen Palm	6	7	7
27	Queen Palm	9	7	12
28	Queen Palm	7	7	7
29	Queen Palm	6	6	4
30	Queen Palm	8	7	8
31	Queen Palm	7	5	12
32	Queen Palm	8	7	12
33	Queen Palm	8	7	12
34	Queen Palm	8	7	6
35	Queen Palm	7	7	7
36	Queen Palm	7	7	6
37	Queen Palm	7	7	7
38	Queen Palm	6	6	8
39	Queen Palm	8	7	6
40	Queen Palm	7	7	8
41	Queen Palm	6	7	6
42	Queen Palm	9	6	8
43	Removed	x	x	x
44	Queen Palm	7	7	8
45	Queen Palm	6	7	9
46	Mahogany	20	25	18
47	Mahogany	20	30	26
48	Mahogany	20	30	14
49	Mahogany	25	35	26
50	Cuban Palm	30	6	4
51	Cuban Palm	45	20	6
52	Royal Palm	25	15	5
53	Cuban Palm	35	10	4
54	Cuban Palm	30	7	4
55	Cuban Palm	30	7	4
56	Cuban Palm	25	8	4
57	Cuban Palm	20	10	4
58	Cuban Palm	30	7	4
59	Cuban Palm	30	7	4
60	Cuban Palm	25	7	4
61	Cuban Palm	25	7	4
62	Butterfly Palm	20	10	4
63	Royal Palm	20	6	14
64	Cuban Palm	25	7	8
65	Cuban Palm	25	7	8
66	Cuban Palm	30	7	4
67	Cuban Palm	30	7	4
68	Cuban Palm	30	7	4
69	Cuban Palm	30	7	4
70	Cuban Palm	30	7	4
71	Ficus Tree	35	80	120
72	African Baobab	40	30	120
73	Cuban Palm	30	7	4
74	Cuban Palm	30	7	4
75	Butterfly Palm	25	7	3
76	Butterfly Palm	25	7	3
77	Butterfly Palm	25	7	3
78	Butterfly Palm	25	7	3
79	Butterfly Palm	25	7	3
80	Black Oak	25	20	8
81	Black Oak	25	20	8
82	Royal Palm	20	8	8
83	Cuban Palm	25	7	4
84	Cuban Palm	30	10	8
85	Cuban Palm	30	8	8
86	Cuban Palm	30	8	8

TREE TABLE

ID NUMBER	COMMON NAME	HEIGHT (FEET)	SPREAD (FEET)	DIAMETER (INCHES)
87	Cuban Palm	30	7	4
88	Cuban Palm	30	7	4
89	Fountain Palm	30	10	8
90	African Baobab	35	35	120
91	Cuban Palm	30	7	8
92	Butterfly Palm	25	12	4
93	Cuban Palm	30	6	4
94	Butterfly Palm	25	8	4
95	Butterfly Palm	25	8	4
96	Cuban Palm	25	7	4
97	Black Oak	45	10	14
98	Cuban Palm	25	8	4
99	Cuban Palm	25	7	4
100	Cuban Palm	25	7	4
101	Cuban Palm	25	7	4
102	Cuban Palm	25	7	4
103	Cuban Palm	25	7	4
104	Cuban Palm	25	7	4
105	Cuban Palm	25	7	4
106	African Baobab	35	20	96
107	Cuban Palm	30	7	4
108	Black Oak	30	12	12
109	Cuban Palm	30	7	4
110	Butterfly Palm	20	12	4
111	African Baobab	30	30	180
112	Cuban Palm	30	7	4
113	Black Oak	30	30	16
114	Butterfly Palm	25	6	4
115	Cuban Palm	25	7	4
116	Cuban Palm	25	6	4
117	Cuban Palm	25	7	4
118	Cuban Palm	25	7	4
119	Cuban Palm	25	7	4
120	Cuban Palm	30	10	8
121	Cuban Palm	30	10	8
122	Cuban Palm	35	12	14
123	Cuban Palm	35	15	7
124	Cuban Palm	15	12	12
125	Cuban Palm	30	12	8
126	Cuban Palm	20	15	12
127	Cuban Palm	20	15	12
128	Cuban Palm	30	12	6
129	Cuban Palm	30	8	6
130	Cuban Palm	25	8	4
131	Cuban Palm	25	8	4
132	Cuban Palm	25	87	4
133	Cuban Palm	25	7	4
134	Cuban Palm	20	76	2
135	Cuban Palm	20	7	2
136	Cuban Palm	20	6	2
137	Cuban Palm	20	7	2
138	Cuban Palm	20	7	2
139	Cuban Palm	20	7	2
140	Cuban Palm	20	7	2
141	Cuban Palm	20	7	2
142	Gummo Combo	12	6	3
143	Button Mangrove	15	7	3
144	Button Mangrove	15	7	3
145	Button Mangrove	15	7	3
146	Wellow Oak	15	7	4
147	Button Mangrove	12	7	3
148	Button Mangrove	12	7	3
149	Button Mangrove	12	7	3
150	Gummo Combo	12	7	4
151	Button Mangrove	10	7	3
152	Button Mangrove	10	6	3
153	Button Mangrove	10	7	3
154	Button Mangrove	10	7	3
155	Button Mangrove	10	7	3
156	Cuban Palm	30	7	4
157	Cuban Palm	20	15	4
158	Cabbage Palm	25	7	10
159	Cabbage Palm	25	7	10
160	Cabbage Palm	25	7	10
161	Cabbage Palm	25	7	10
162	Cabbage Palm	25	7	10
163	Cabbage Palm	25	7	10
164	Cabbage Palm	25	7	10
165	Cuban Palm	35	10	20
166	Cuban Palm	35	10	20



LEGEND:

- CATCH BASIN TYPE "D"
- ELECTRICAL MANHOLE
- FIRE HYDRANT
- GUY WIRE AND ANCHOR
- HEDGE
- LIGHT POLE
- PALM
- PINE
- TREE
- PARKING METER
- POWER POLE (EXISTING)
- POWER AND TELEPHONE POLE (EXIST.)
- STAND PIPE
- FLOOD LIGHT
- BENCH
- BIKE RACK
- TRASH CAN
- FLAG POLE
- MAILBOX
- FORCE MAIN VALVE BOX
- GAS VALVE
- EXISTING VALVE
- WATER VALVE BOX
- WATER METER BOX
- MONITORING WELL
- POST
- CLEAN OUT
- SANITARY VALVE
- DRAIN
- BACKFLOW PREVENTER
- WATER VALVE
- FIRE DEPARTMENT CONNECTION
- IRRIGATION VALVE
- GAS METER
- GAS MANHOLE
- COMMUNICATION BOX
- TELEPHONE BOX
- ELECTRICAL BOX
- SERVICE BOX
- ELECTRICAL METER
- ELECTRICAL OUTLET
- WOOD POWER POLE
- STORM DRAINAGE MANHOLE
- SANITARY SEWER MANHOLE
- SIGN
- SIGNAL CONTROL PANEL
- TELEPHONE MANHOLE
- WIRE PULL BOX
- CENTER LINE

ABBREVIATIONS:

- AVE = AVENUE
- BEC = BISCAYNE ENGINEERING COMPANY
- BM = BENCHMARK
- (C) = CALCULATED FROM FIELD MEASUREMENTS
- C.L.F. = CHAIN LINK FENCE
- CONC. = CONCRETE
- D.H. = DRILL HOLE
- EL. = ELEVATION
- ELEV = ELEVATION
- FND = FOUND
- GPS = GLOBAL POSITIONING SYSTEM
- ID = IDENTIFICATION
- I.P. = IRON PIPE
- I.R. = IRON ROD
- L = LENGTH (WHEN USED IN CURVE DATA)
- (L) = PER LEGAL DESCRIPTION
- LB = LICENSED BUSINESS
- N&W = NAIL AND WASHER
- NAD = NORTH AMERICAN DATUM
- NAVD88 = NORTH AMERICAN VERTICAL DATUM OF 1988
- NGVD29 = NATIONAL GEODETIC VERTICAL DATUM OF 1929
- O.R.B. = OFFICIAL RECORDS BOOK
- (P) = PER PLAT
- P.B. = PLAT BOOK
- PC = POINT OF CURVATURE
- PG. = PAGE
- P.O.B. = POINT OF BEGINNING
- P.O.C. = POINT OF COMMENCEMENT
- PT = POINT OF TANGENCY
- R = RADIUS (WHEN USED IN CURVE DATA)
- R&C = REBAR AND CAP
- R/W = RIGHT OF WAY
- SEC. = SECTION
- EL. = CENTERLINE
- Δ = DELTA ANGLE
- Ø = DIAMETER
- ± = MORE OR LESS

- = HARD SURFACE SPOT ELEVATION (NAVD88)
- = SOFT SURFACE SPOT ELEVATION (NAVD88)

1933-1945 MERIDIAN AVENUE, MIAMI BEACH, FL
FOR: GREATER MIAMI JEWISH FEDERATION
SCALE: 1"=20'
DATE: 06-17-21
APPROVED BY: W.H.

ORDER No.
03-87057
SHEET No.
2 of 2

BISCAYNE
ENGINEERS
SURVEYORS • ENGINEERS
PLANNERS
• SINCE 1898 •

MIAMI-DADE
529 W. FLAGLER ST. MIAMI, FL 33130
TEL (305) 324-7671 FAX (305) 324-0909
449 NW 35TH ST. BOCA RATON, FL 33431
TEL (561) 609-2329
E-MAIL: INFO@BISCAYNEENGINEERING.COM
WEB: WWW.BISCAYNEENGINEERING.COM

COMMENTS

ORDER # DATE F.E.#