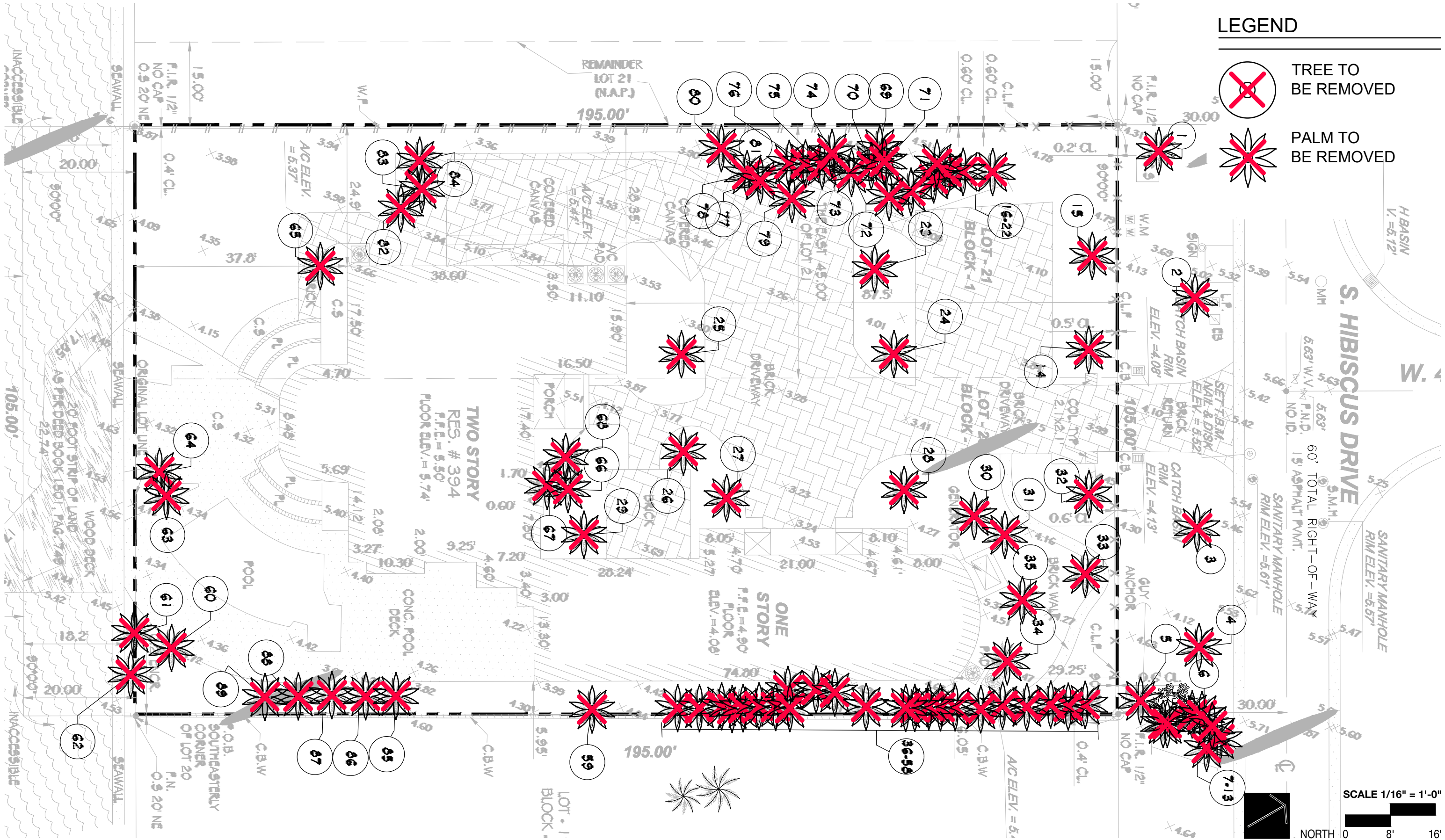


TREE No.	TREE - LATIN NAME	TREE - COMMON NAME	DIAMETER at BREAST HEIGHT (feet)	APPROXIMA TE HEIGHT (feet)	CANOPY DIAMETER (feet)	CRITICAL ROOTZONE RADIUS (in feet)	CONDITION	DISPOSITION	REMOVAL- MUNICIPAL CRITERIA			
									PALM	CANOPY		
1	<i>Dypsis lutescens</i>	ARECA PALM	5	32	16			REMOVE	1			
2	<i>Bismarckia nobillis</i>	BISMARK PALM	1.05	40	12			REMOVE	1			
3	<i>Bismarckia nobillis</i>	BISMARK PALM	1.05	30	12			REMOVE	1			
4	<i>Bismarckia nobillis</i>	BISMARK PALM	1.05	30	12			REMOVE	1			
5	<i>Dypsis lutescens</i>	ARECA PALM	3	20	10			REMOVE	1			
6	<i>Adonidia merrillii</i>	XMAS PALM	0.75	27	15			REMOVE		9		
7	<i>Adonidia merrillii</i>	XMAS PALM	0.45	20	8			REMOVE	1			
8	<i>Adonidia merrillii</i>	XMAS PALM	0.45	20	8			REMOVE	1			
9	<i>Cocos nucifera</i>	COCONUT PALM	1.15	60	12			REMOVE	1			
10	<i>Cocos nucifera</i>	COCONUT PALM	0.7	60	12			REMOVE	1			
11	<i>Cocos nucifera</i>	COCONUT PALM	0.9	45	12			REMOVE	1			
12	<i>Adonidia merrillii</i>	COCONUT PALM	0.35	20	8			REMOVE	1			
13	<i>Adonidia merrillii</i>	XMAS PALM	0.9	20	8			REMOVE	1			
14	<i>Cocos nucifera</i>	COCONUT PALM	0.85	50	12			REMOVE	1			
15	<i>Cocos nucifera</i>	COCONUT PALM	0.85	50	12			REMOVE	1			
16	<i>Syagrus romanzoffiana</i>	QUEEN PALM	0.75	35	10			REMOVE	1			
17	<i>Washingtonia robusta</i>	MEXICAN FAN PALM	0.75	35	10			REMOVE	1			
18	<i>Washingtonia robusta</i>	MEXICAN FAN PALM	0.65	35	10			REMOVE	1			
19	<i>Washingtonia robusta</i>	MEXICAN FAN PALM	0.65	35	10			REMOVE	1			
20	<i>Washingtonia robusta</i>	MEXICAN FAN PALM	0.55	18	15			REMOVE	1			
21	<i>Washingtonia robusta</i>	MEXICAN FAN PALM	0.7	8	10			REMOVE	1			
22	<i>Washingtonia robusta</i>	MEXICAN FAN PALM	0.3	18	8			REMOVE	1			
23	<i>Phoenix dactylifera</i>	DATE PALM	1.5	50	16			REMOVE	1			
24	<i>Phoenix dactylifera</i>	DATE PALM	1.5	50	16			REMOVE	1			
25	<i>Phoenix dactylifera</i>	DATE PALM	1.5	50	16			REMOVE	1			
26	<i>Phoenix dactylifera</i>	DATE PALM	1.5	50	16			REMOVE	1			
27	<i>Phoenix dactylifera</i>	DATE PALM	1.35	45	16			REMOVE	1			
28	<i>Phoenix dactylifera</i>	DATE PALM	1.25	45	16			REMOVE	1			
29	<i>Syagrus romanzoffiana</i>	QUEEN PALM	0.95	40	12			REMOVE	1			
30	<i>Phoenix dactylifera</i>	DATE PALM	1.4	50	16			REMOVE	1			
31	<i>Syagrus romanzoffiana</i>	QUEEN PALM	0.8	30	16			REMOVE	1			
32	<i>Cocos nucifera</i>	COCONUT PALM	0.75	50	12			REMOVE	1			
33	<i>Cocos nucifera</i>	COCONUT PALM	0.5	50	12			REMOVE	1			
34	<i>Dypsis lutescens</i>	ARECA PALM	1.35	15	14			REMOVE	1			
35	<i>Dypsis lutescens</i>	ARECA PALM	1.35	15	14			REMOVE	1			
36	<i>Caryota urens</i>	FISHTAIL PALM	1.2	20	8			REMOVE	1			
37	<i>Caryota urens</i>	FISHTAIL PALM	1.5	20	8			REMOVE	1			
38	<i>Caryota urens</i>	FISHTAIL PALM	1.5	20	8			REMOVE	1			
39	<i>Caryota urens</i>	FISHTAIL PALM	1.5	20	8			REMOVE	1			
40	<i>Caryota urens</i>	FISHTAIL PALM	1.5	20	8			REMOVE	1			
41	<i>Caryota urens</i>	FISHTAIL PALM	1.5	20	8			REMOVE	1			
42	<i>Dypsis lutescens</i>	ARECA PALM	1.15	25	10			REMOVE	1			
43	<i>Dypsis lutescens</i>	ARECA PALM	1.15	25	10			REMOVE	1			
44	<i>Dypsis lutescens</i>	ARECA PALM	1.15	25	10			REMOVE	1			
45	<i>Dypsis lutescens</i>	ARECA PALM	1.15	25	10			REMOVE	1			
46	<i>Dypsis lutescens</i>	ARECA PALM	1.15	25	10			REMOVE	1			
47	<i>Dypsis lutescens</i>	ARECA PALM	1.15	25	10			REMOVE	1			
48	<i>Adonidia merrillii</i>	XMAS PALM	0.7	35	12			REMOVE	1			
49	<i>Adonidia merrillii</i>	XMAS PALM	0.95	40	12			REMOVE	1			
50	<i>Adonidia merrillii</i>	XMAS PALM	0.45	12	12			REMOVE	1			

TREE No.	TREE - LATIN NAME	TREE - COMMON NAME	DIAMETER at BREAST HEIGHT (feet)	APPROXIMATE HEIGHT (feet)	CANOPY DIAMETER (feet)	CRITICAL ROOTZONE RADIUS (in feet)	CONDITION	DISPOSITION	REMOVAL- MUNICIPAL CRITERIA			
									PALM	CANOPY		
51	Dypsis lutescens	ARECA PALM	1.25	25	10			REMOVE	1			
52	Dypsis lutescens	ARECA PALM	1.25	25	10			REMOVE	1			
53	Dypsis lutescens	ARECA PALM	1.25	25	10			REMOVE	1			
54	Dypsis lutescens	ARECA PALM	1.25	25	10			REMOVE	1			
55	Dypsis lutescens	ARECA PALM	1.25	25	10			REMOVE	1			
56	Dypsis lutescens	ARECA PALM	1.25	25	10			REMOVE	1			
57	Dypsis lutescens	ARECA PALM	1.25	25	10			REMOVE	1			
58	Dypsis lutescens	ARECA PALM	1.25	25	10			REMOVE	1			
59	Dypsis lutescens	ARECA PALM	1.25	25	10			REMOVE	1			
60	Adonidia merrillii	XMAS PALM	0.7	30	8			REMOVE	1			
61	Adonidia merrillii	XMAS PALM	0.7	30	8			REMOVE	1			
62		UNKNOWN TREE	0.6	14	13			REMOVE		7		
63	Adonidia merrillii	XMAS PALM	0.65	30	13			REMOVE	1			
64	Adonidia merrillii	XMAS PALM	0.65	30	13			REMOVE	1			
65	Adonidia merrillii	XMAS PALM	1.05	40	10			REMOVE	1			
66	Ravenala madagascariensis	TRAVELLERS PALM	3	25	16			REMOVE	1			
67	Thrinax radiata	THATCH PALM	0.25	35	6			REMOVE	1			
68	Thrinax radiata	THATCH PALM	0.25	35	6			REMOVE	1			
69	Thrinax radiata	THATCH PALM	0.55	30	10			REMOVE	1			
70	Adonidia merrillii	XMAS PALM	0.55	30	10			REMOVE	1			
71	Adonidia merrillii	XMAS PALM	0.55	30	10			REMOVE	1			
72	Adonidia merrillii	XMAS PALM	2	55	15			REMOVE	1			
73	Adonidia merrillii	XMAS PALM	0.6	35	10			REMOVE	1			
74	Adonidia merrillii	XMAS PALM	0.6	35	10			REMOVE	1			
75	Adonidia merrillii	XMAS PALM	0.6	17	8			REMOVE	1			
76	Adonidia merrillii	XMAS PALM	0.6	35	8			REMOVE	1			
77	Adonidia merrillii	XMAS PALM	0.6	30	8			REMOVE	1			
78	Adonidia merrillii	XMAS PALM	0.6	30	8			REMOVE	1			
79	Adonidia merrillii	XMAS PALM	1.05	12	12			REMOVE	1			
80	Adonidia merrillii	XMAS PALM	0.95	13	12			REMOVE	1			
81	Adonidia merrillii	XMAS PALM	0.95	25	13			REMOVE	1			
82	Syagrus romanzoffiana	QUEEN PALM	0.65	30	15			REMOVE	1			
83	Syagrus romanzoffiana	QUEEN PALM	0.65	30	15			REMOVE	1			
84	Syagrus romanzoffiana	QUEEN PALM	0.65	30	15			REMOVE	1			
85	Dypsis lutescens	ARECA PALM	1.5	25	8			REMOVE	1			
86	Dypsis lutescens	ARECA PALM	1.5	25	8			REMOVE	1			
87	Dypsis lutescens	ARECA PALM	1.5	25	8			REMOVE	1			
88	Dypsis lutescens	ARECA PALM	1.5	25	8			REMOVE	1			
89	Dypsis lutescens	ARECA PALM	1.5	25	8			REMOVE	1			
FROM PROPOSED PLANTING												
TOTAL UNITS TO BE REMOVED:									87	16	inches	
TOTAL ESTIMATED REQUIRED ON SITE MITIGATION PER CODE (2"DBH/12HT):									93		trees	
PROPOSED ON SITE MITIGATION BREAKDOWN											TREE CREDIT	
CANOPY TREE I- 2"DBH/12'HT MIN:									29			29
CANOPY TREE II- 4"DBH/16'HT MIN:									38		one CT II is equal to two CT I	38
NATIVE - 1.5"DBH/10'HT MIN:									28		up to 30% of required CT I	28
PALMS- 3"DBH/14'HT MIN:									2		up to 30% of required CT I at 2 palm/tree	2
TOTAL PROPOSED REPLACEMENT TREES (REFER TO PLANTING PLANS):									97		OMBINATION FULFILLS SITE MITIGATION O	97



TREES & PALMS PLANTING SCHEDULE

ABR	QTTY	BOTANICAL NAME	COMMON NAME	SPECIFICATIONS
TREES + NATIVE UNDERSTORY TREES				
CBR	3	CALOPHYLLUM BRASILIENSE	BRAZILIAN BEAUTY LEAF	12" DBH / 30' x 30'
CCY	13	CAPPARIS CYNOPHALLOPHORA	JAMAICAN CAPPER	1.5" DBH / 10' HT
CGR	7	CAESALPINA GRANADILLO	BRIDALVEIL	4" DBH / 16' HT MIN
CRO	8	CLUSIA ROSEA	AUTOGRAPH TREE	4" DBH / 16' HT MIN
COL	9	CHRYSOPHYLLUM OLIVIFORME	SATIN LEAF	1.5" DBH / 10' HT
EAX	6	EUGENIA AXILLARIS	WHITE STOPPER	1.5" DBH / 10' HT
ERH	5	EUGENIA RHOMBEA	RED STOPPER	2" DBH / 12' HT MIN
GLU	11	GYMNANTHES LUCIDA	CRABWOOD	2" DBH / 12' HT MIN
MFR	1	MYRCIANTHES FRAGRANS	SIMPSON STOPPER	4" DBH / 16' HT MIN
PRA	13	PIMENTA RACEMOSA	BAY RUM	2" DBH / 12' HT MIN

PALMS				
SDO	1	SABAL DOMINIGENSIS	DOMINICAN SABAL	FG 30' CT
SLI	3	SATAKENTIA LIUKIUENSIS	SATAKE PALM	FG 30' CT

BAMBOO				
PNI	33	PHYLLOSTACHYS NIGRA	BLACK BAMBOO	45 GAL / FG 12' HT

SHRUBS & GROUNDCOVERS				
AL	28	ALOCASSIA PORTORA	ELEPHANT EARS	15 GAL / 48" O.C.
MD	44	MONSTERA DELICIOSA	SWISS CHEESE PLANT	3 GAL / 48" O.C.
NB	806	NEPHROLEPSIS BISERRATA	SWORD FERN	1 GAL / 18" O.C.
NF	162	NEPHROLEPIS FALCATA	MACHO FERN	3 GAL / 36" O.C.
PB	18	PHILODENDRON BURLE MARX	BURLE MARX PHILODENDRON	3 GAL / 24" O.C.

GRASSES				
OP	535	OPHIOPOGON JAPONICUS	MONDO GRASS	7 GAL / 12" O.C.
TD	28	TRIPSACUM DACTYLOIDES	FAKAHATCHEE GRASS	3 GAL / 36" O.C.
ZJ	2166 SF	ZOYSIA JAPONICA	ZOYSIA GRASS	SOD

NOTES

All shrubs shall be a minimum of 18 inches when measured immediately after planting

Shrubs shall be provided at ratio of 10 per required tree.

No less then 30% shall be native species and no less then 50% shall be low maintenance and drought tolerant

80% shall be listed in Miami Dade Landscape manual, Miami Dade street tree master plan, Florida's low maintenace landscape plants for South Flori

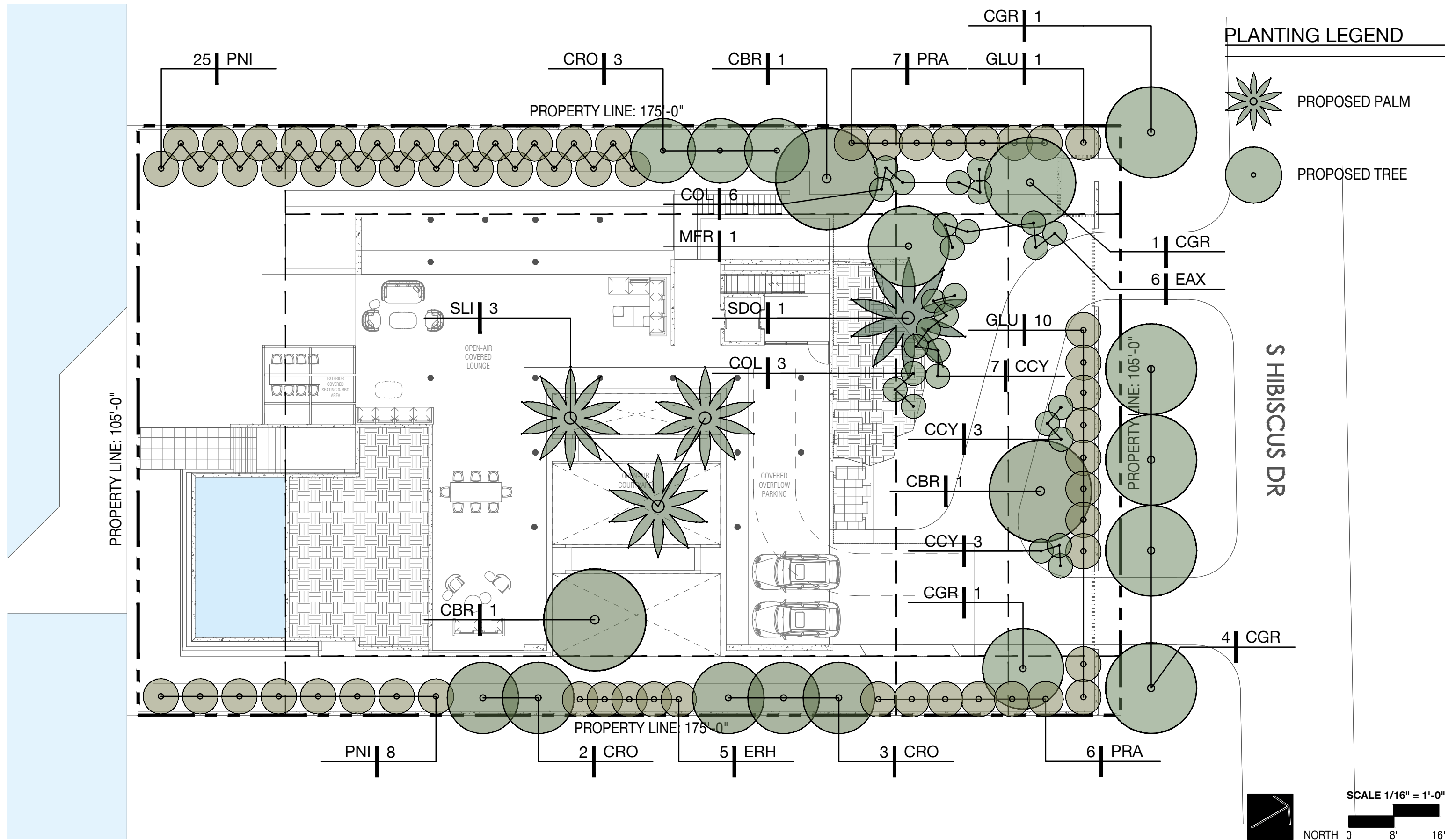
Spacing of 30 inches on center if planted at a minimum height of 36 inches plant at 48 inches

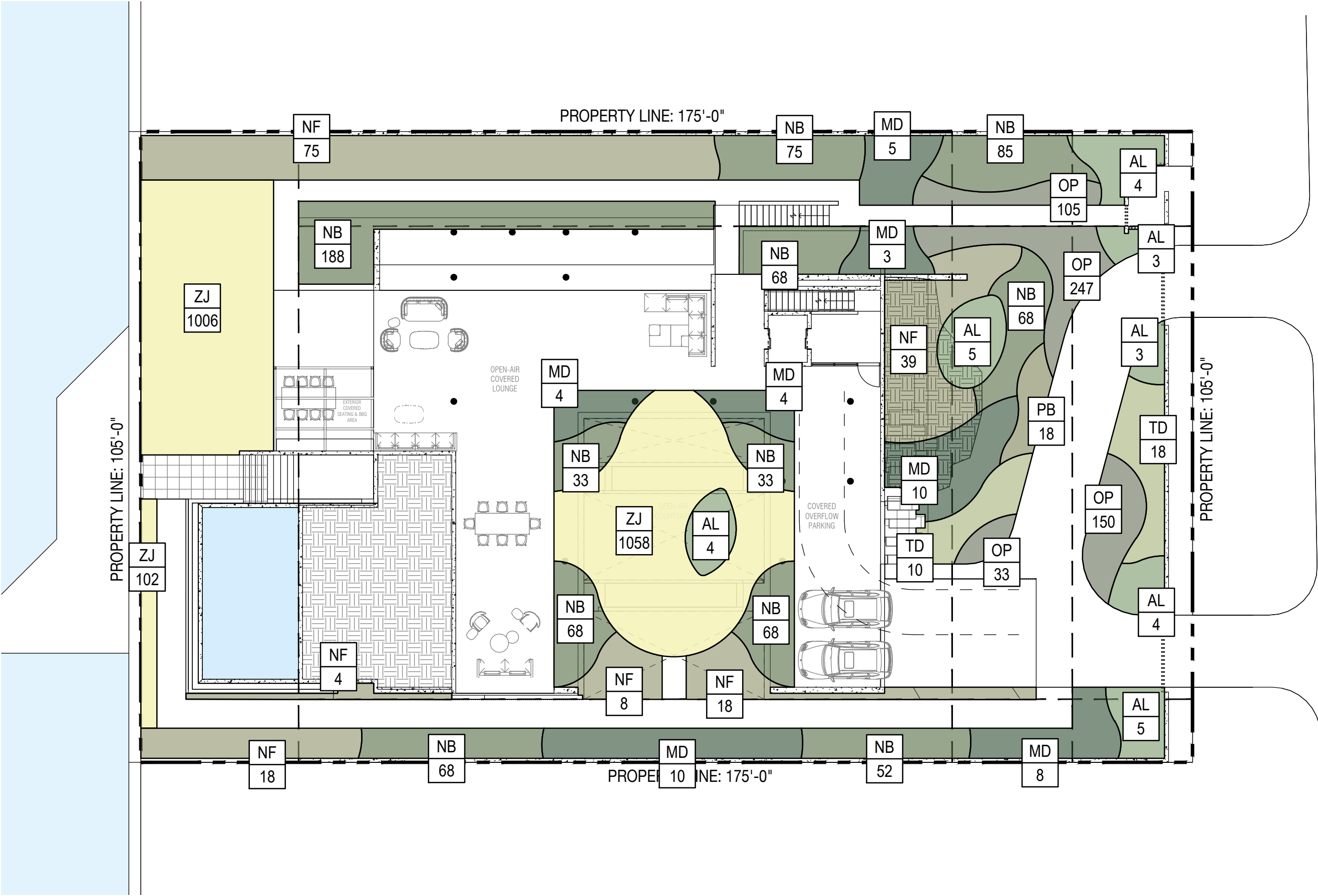
Definitons:

Open Space: Any parcel or area of land or water essentially unimproved by permanent Buildings and open to the sky; such space shall be reserved for public or private Use. Open Spaces may include Parks, Greens, Squares, Courtyards, Gardens, Playgrounds, paseos (when designed predominantly for pedestrians), and pedestrian paths or associated landscaped areas.

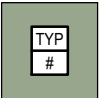
Green Space: An open Space outdoors, at grade, unroofed, landscaped and free of impervious surfaces.

		MUNICIPALITY: <u>City of Miami Beach</u>			
		ZONING CLASS: RS-3	LOT AREA: <u>18,375</u>	ACRES: <u>0.4218</u>	
		ORDINANCE/CODE SECTION: CITY OF MIAMI BEACH SECTION 126			
CODE REFERENCE	OPEN SPACE			REQUIRED/ ALLOWED	PROVIDED
Sec. 126-6, c, Table A	A.	Sq. Ft. of required Open Space		<u>9,188</u>	<u>12,885</u>
		Lot area: <u>18,375</u>			
		Multiplier: <u>50%</u>			
	B.	Sq. Ft. of parking lot open space		<u>20</u>	<u>20</u>
		Parking Spaces: <u>2</u>			
		Multiplier: <u>10</u> sf/space			
	C.	Total Sq. Ft. of landscaped Open Space required		<u>9,208</u>	<u>12,905</u>
LAWN AREA					
Sec. 126-6, c, Table A	A.	Total Sq. Ft. of Landscaped Open Space		<u>9,208</u>	<u>12,905</u>
	B.	Maximum Lawn Area (sod) permitted-		<u>1,842</u>	<u>2,166</u>
		Open space required: <u>9,208</u>			
		Multiplier: <u>20%</u>			
	TREES				
	A.	Number of trees required per lot, less existing trees		<u>13</u>	<u>13</u>
		Required Trees/Lot: <u>5</u>			
		Net lot acres: <u>0.4218</u>			
		Required Trees: <u>13</u>			
		Existing trees: <u>0</u>			
	B.	% Palms allowed		<u>0</u>	<u>0</u>
		Trees provided: <u>13</u>			
		Multiplier: <u>0%</u>			
PER CODE SECTION 126-6.C.10 PALMS DO NOT COUNT TOWARD MIN. TREE REQUIREMENTS					
Sec. 126-6, c, 7	C.	% Native required		<u>4</u>	<u>4</u>
		Trees provided: <u>13</u>			
		Multiplier: <u>30%</u>			
Sec. 126-6, c, 8	D.	% Drought tolerant and low maintenance species required		<u>7</u>	<u>7</u>
		Trees provided: <u>13</u>			
		Multiplier: <u>50%</u>			
STREET TREES					
NO WORK IN THE ROW INCLUDED IN THIS SCOPE					
Section 126-6, a, 1	A.	Street trees (maximum average spacing of 20' o.c.)		<u>5</u>	<u>5</u>
		Linear ft of street frontage: <u>105</u>			
		Multiplier: <u>20</u>			
		Existing trees: <u>0</u>			
Section 126-6,3	B.	Street trees directly below power lines		<u>5</u>	<u>5</u>
		Linear ft of street frontage: <u>105</u>			
		Multiplier: <u>20</u>			
SHRUBS					
Sec. 126-6, d	A.	Number of shrubs required		<u>252</u>	<u>252</u>
		Lot and street trees required: <u>18</u>			
		Multiplier: <u>12</u>			
Sec. 126-6, d	B.	% Native species required		<u>126</u>	<u>126</u>
		Shrubs provided: <u>252</u>			
		Multiplier: <u>50%</u>			
LARGE SHRUBS OR SMALL TREES					
	A.	Number of shrubs or small tree required		<u>25</u>	<u>25</u>
		Shrubs required: <u>252</u>			
		Multiplier: <u>10%</u>			
	B.	% Native species required		<u>13</u>	<u>13</u>
		Shrubs provided: <u>25</u>			
		Multiplier: <u>50%</u>			

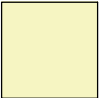




PLANTING LEGEND

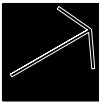


PROPOSED
GROUNDCOVER

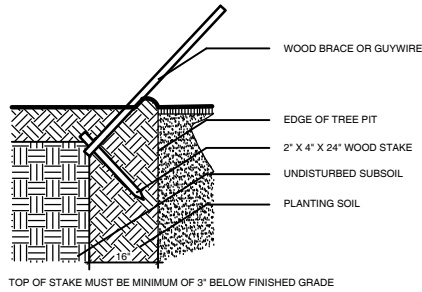


PROPOSED LAWN

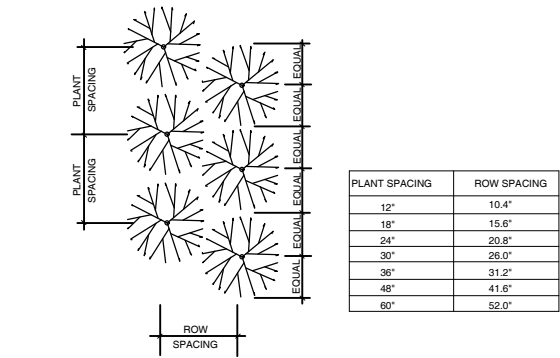
S HIBISCUS DR



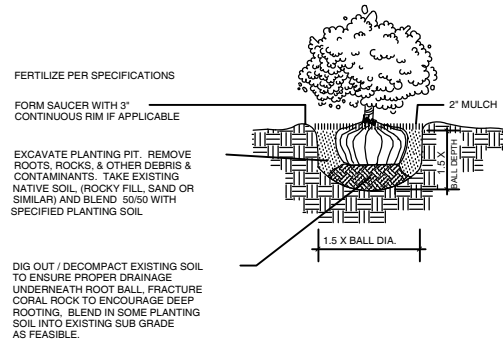
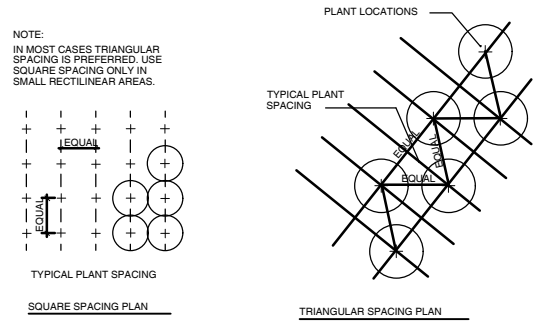
SCALE 1/16" = 1'-0"
NORTH 0 8' 16'



1 STAKING DETAIL
SCALE: NOT TO SCALE



2 PLANT SPACING
SCALE: NOT TO SCALE



3 SHRUB PLANTING
SCALE: NOT TO SCALE

PREPARATION:
STORE ALL MATERIAL IN DRY, CLEAN AREA. COVER TO PROTECT FROM RAIN AND MINIMIZE DUST. COORDINATE RUN-OFF CONTROL WITH GENERAL CONTRACTOR.
TEST EXISTING SOIL TO ENSURE IT IS FREE OF EXCESSIVE CLAY OR SALT AND ANY CHEMICALS/PETROCHEMICALS WHICH MAY HARM PLANT HEALTH.

EXISTING MATERIAL:
IF INCORPORATING EXISTING SITE SOIL REMOVE ALL ROOTS, AND ROCK LARGER THAN 2" IN SIZE. REMOVE ALL PLASTIC, METAL AND MANMADE DETRITUS.

MIX:
50% EXISTING SOIL
10% COCO PEAT
10% COMPOST
20% CLEAN SAND
10% PERLITE

BLEND QUANTITIES NEEDED BY HAND OR MACHINE.

INSTALLATION:
REFER TO APPROPRIATE DETAILS FOR AMENDMENTS, COMPACTION DEPTHS ETC.

GENERAL: REFER TO LANDSCAPE NOTES FOR ADDITIONAL INFORMATION

4 PLANTING SOIL- TYPICAL

MULCH A:
PINE STRAW, FOR USE IN GENERAL PLANTING AREAS AND ON SLOPES GREATER THAN 10%.

MULCH B:
MINI PINE BARK NUGGETS, FOR USE IN SPECIALTY AREAS

MULCH C:
MELALEUCA MULCH, FOR USE IN GENERAL PLANTING AREAS AND ON SLOPES GREATER THAN 10%.

BLEND QUANTITIES NEEDED BY HAND OR MACHINE.

INSTALLATION:
REFER TO APPROPRIATE DETAILS FOR EXTENTS AND DEPTHS.

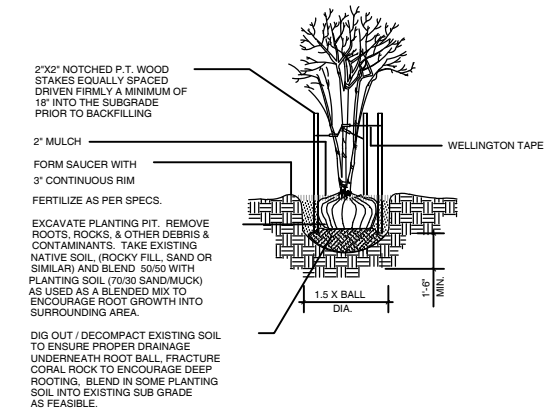
GENERAL: REFER TO LANDSCAPE NOTES FOR ADDITIONAL INFORMATION. CONFIRM TYPE TO BE USED WITH LANDSCAPE ARCHITECT PRIOR TO INSTALLATION.

5 MULCH- TYPICAL

MIX:
5050- MUCK AND FINE SAND

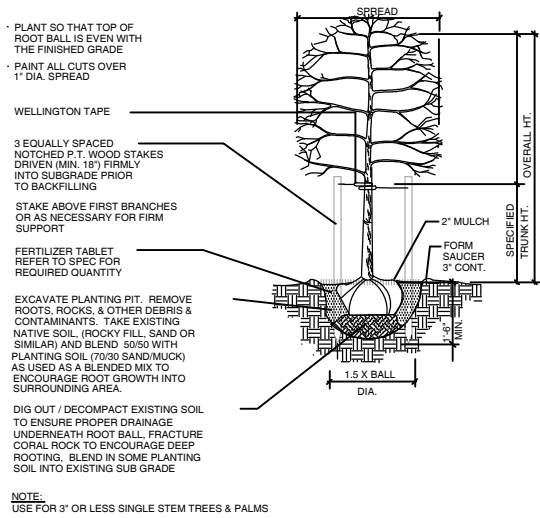
SUPPLIER: ATLAS PEAT AND SOIL 561.734.7300

6 PLANTING SOIL- LAWN TOP DRESSING

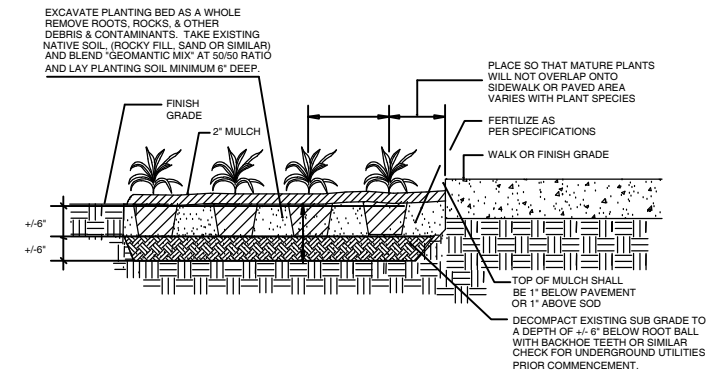


7 MULTI TRUNK TREE- PLANTNG & STAKING
SCALE: NOT TO SCALE

CALIPER	TIES	STRANDS	STAKES
1" - 1 1/2"	2	1 # 12	2 - 2 X 2
1 1/2" - 2"	3	1 # 12	3 - 2 X 2
2" - 3"	3	2 # 12	2 - 2 X 2

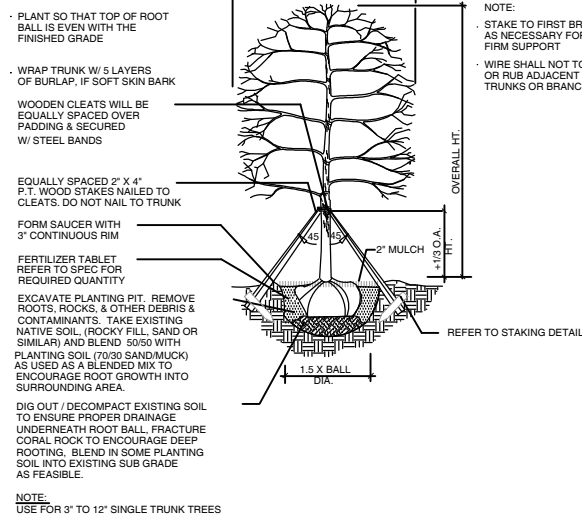


10 CANOPY AND PALM TREE- PLANTING & VERTICAL STAKING
SCALE: NOT TO SCALE

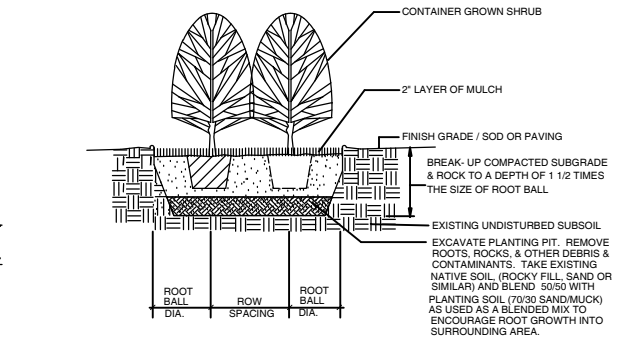


8 SHRUB- HEDGE AND MASS PLANTING
SCALE: NOT TO SCALE

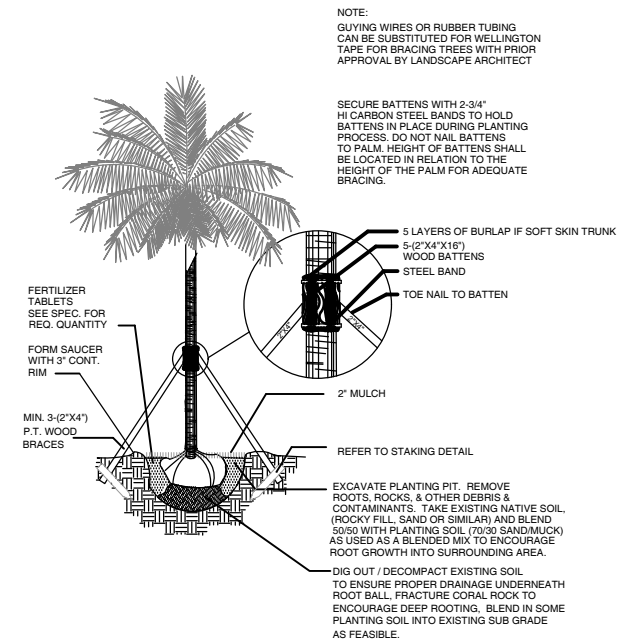
CALIPER	CLEATS	STRAPS	BRACES	NAILS
3" - 8"	2 x 4 x 8"	1 # 12	3 - 2 X 4	2 - 16d
8" - 10"	2 x 4 x 12"	1 # 12	3 - 2 X 4	3 - 16d
10" - 16"	2 x 4 x 12"	2 # 12	4 - 2 X 4	3 - 16d



11 CANOPY TREE- PLANTING & TRIPLE BRACE STAKING
SCALE: NOT TO SCALE



9 SHRUB- HEDGE AND MASS PLANTING
SCALE: NOT TO SCALE



12 PALM- PLANTING & STAKING
SCALE: NOT TO SCALE

