



Green Spaces Consulting



P.O. Box 6332, West Palm Beach, FL 33405

954-621-6324

kirstie@greenspacesconsulting.com

October 18, 2021

ARBORIST REPORT

TO: Domaine Public Architects
15 E 11th / 9G
New York, NY 10003

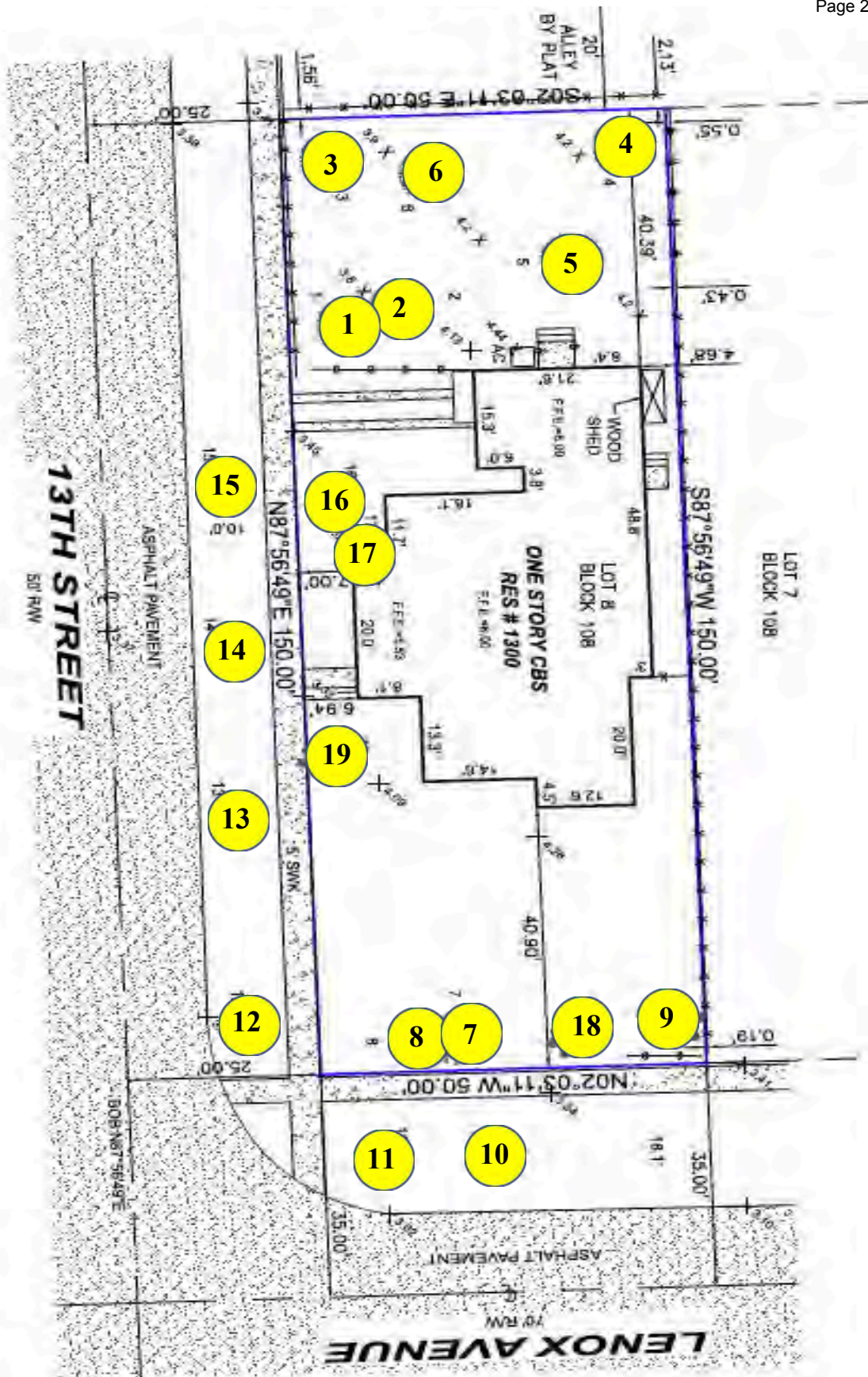
Karim Fakhry
K.fakhry@domainepublicarchitects.com

RE: Arborist Report/Tree Mapping
1300 Lenox Avenue
Miami Beach, FL 33139

This document is an evaluation of the location, size, and condition of all trees onsite and in right-of-way at 1300 Lenox Avenue performed on October 14, 2021. All observations are visual from the ground. Tree locations and canopy square footage are approximate. All data is reported using current industry standards. Official survey has been cropped to depict tree locations and is not to scale. This report is not a risk assessment. This report may be used for permitting purposes. Disposition of trees to be determined by others.

Thank you for the opportunity to help resolve your tree issues.

Kirstie McCullough
ISA Certified Arborist FL-9601A



Tree #	Common Name	Botanical Name	DBH (in)	Condition %	TPZ (ft)	CRZ (ft)	Height (ft)	Width (ft)	Canopy Coverage (sq ft)	Notes
1	Frangi Pani	<i>Plumeria spp.</i>	14	20%	7	7	10	5	20	Overgrown shrub. Previously hatracked.
2	Avocado	<i>Persea americana</i>	9	65%	5	5	25	15	177	Good vigor.
3	Tropical Almond	<i>Terminalia catappa</i>	5	20%	5	3	10	12	113	Category II Invasive
4	Lemon Tree	<i>Citrus limon spp.</i>	4	45%	4	2	15	8	50	Canopy competition, low crown density.
5	Mango Tree	<i>Mangifera indica</i>	48	45%	24	20	35	25	491	Multi codominance (4 trunks). Poor structure. Overhead wire conflict. Previously overlifted.
6	Coconut Palm	<i>Cocos nucifera</i>	12	65%	4	2	25	15	177	Overhead wire conflict, nutrient deficiencies.
7	Papaya Tree	<i>Carica papaya</i>	3.8	20%	2	2	10	6	28	Herbacious perennial.
8	Papaya Tree	<i>Carica papaya</i>	3.8	20%	2	2	10	6	28	Herbacious perennial.
9	Dracaena	<i>Dracaena marginata</i>	29	20%	5	4	15	15	177	Overgrown shrub. Multi-stem.
10	Royal Palm	<i>Roystonea regia</i>	12	65%	4	2	40	15	177	Minor penciling.
11	Royal Palm	<i>Roystonea regia</i>	12	70%	4	2	40	15	177	
12	Royal Palm	<i>Roystonea regia</i>	12	70%	4	2	40	15	177	
13	Royal Palm	<i>Roystonea regia</i>	12	70%	4	2	40	15	177	Close proximity to stormwater drain.
14	Royal Palm	<i>Roystonea regia</i>	12	70%	4	2	40	15	177	
15	Royal Palm	<i>Roystonea regia</i>	12	70%	4	2	40	15	177	
16	Coconut Palm	<i>Cocos nucifera</i>	10	15%	4	2	30	20	314	Visual evidence of large trunk wound with severe decay. Recommend removal.
17	Solitaire Palm	<i>Ptychosperma elegans</i>	4	55%	2	1	20	10	79	Good vigor.
18	Royal Palm	<i>Roystonea regia</i>	15	75%	4	2	20	15	177	
19	Areca Palm	<i>Dypsis lutescens</i>	7	30%	4	2	25	20	314	Double. Chlorotic, limited root zone, leaning trunks.

















