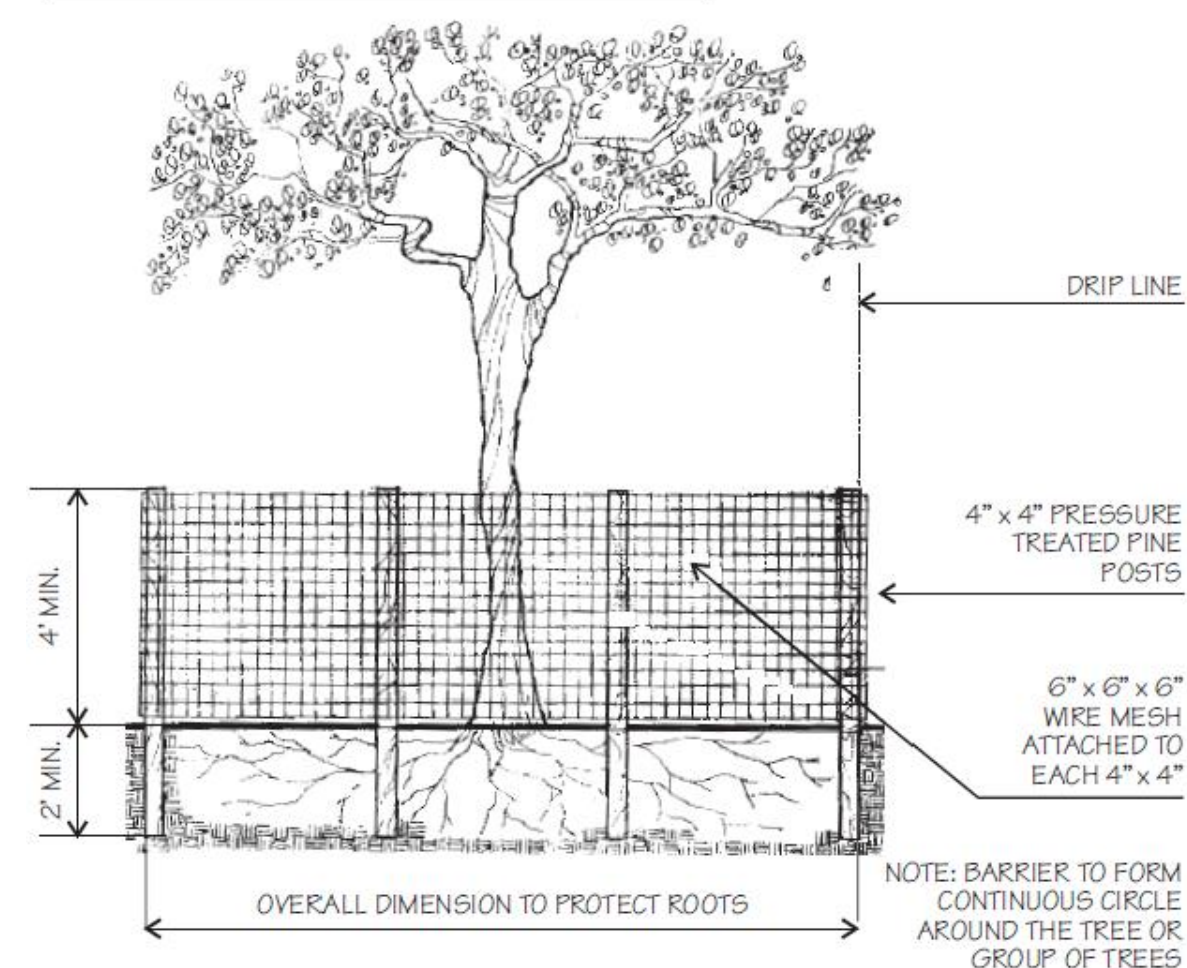


TREE DISPOSITION LIST								
1300 LENOX ALTON ROAD								
EXISTING PALMS/TREES								
TREE NO.	SCIENTIFIC NAME	COMMON NAME	DBH (in)	SPR (ft)	HT. (ft)	STATUS	NOTES	T.P.Z. (ft)
1	Plumeria spp.	Frangi Pani	14	5	10	REMOVE	Overgrown shrub	
2	Persea americana	Avocado	9	15	25	REMOVE		
3	Terminalia catappa	Tropical Almond	5	12	10	REMOVE	Exotic	
4	Citrus limon spp.	Lemon	4	8	15	REMOVE		
5	Mangifera indica	Mango	48	25	35	REMAIN		24
6	Cocos nucifera	Coconut Palm		15	25	REMOVE		
7	Carica papaya	Papaya	3.8	6	10	REMOVE	Herbacious	
8	Carica papaya	Papaya	3.8	6	10	REMOVE	Herbacious	
9	Dracaena marginata	Dracaena	29	15	15	REMOVE	Overgrown shrub	
10	Roystonea regia	Royal Palm		15	40	REMAIN	Off-site	4
11	Roystonea regia	Royal Palm		15	40	REMAIN	Off-site	4
12	Roystonea regia	Royal Palm		15	40	REMAIN	Off-site	4
13	Roystonea regia	Royal Palm		15	40	REMAIN	Off-site	4
14	Roystonea regia	Royal Palm		15	40	REMAIN	Off-site	4
15	Roystonea regia	Royal Palm		15	40	RELOCATE	Off-site	4
16	Cocos nucifera	Coconut Palm	20	30	30	REMOVE		
17	Ptychosperma elegans	Solitaire Palm	10	20	20	RELOCATE		2
18	Roystonea regia	Royal Palm	15	20	20	REMAIN		
19	Dypsis lutescens	Areca Palm	20	25	25	REMOVE		

TREE REPLACEMENT CHART	
EXISTING TREES TO BE REMOVED	
No. 2 Avocado	9
No. 4 Lemon	4
TOTAL INCHES TO REPLACE	13
PROPOSED REPLACEMENT TREES	
4-(CS1) Conocarpus erectus 'Sericeous' (3" dbh.)	12
1-(SI) Saraca indica (2" dbh.)	2
TOTAL PROPOSED INCHES	14
EXISTING PALMS TO BE REMOVED	
No. 6 Coconut Palm	1
No. 16 Coconut Palm	1
No. 19 Areca Palm	1
TOTAL PALMS TO REPLACE (2:1)	6
PROPOSED REPLACEMENT PALMS	
(CM1) Fishtail Palm	3
(SP) Sabal Palm	3
TOTAL PROPOSED PALMS	6

IT IS CRITICAL TO EXISTING TREE SURVIVAL TO PROVIDE PROTECTION DURING CONSTRUCTION. THIS DETAIL CAN BE USED AROUND ONE OR MORE TREES AND WILL PROVIDE PROTECTION FROM CONSTRUCTION EQUIPMENT.



TREE DISPOSITION LEGEND	
	TREE TO REMAIN
	TREE TO BE RELOCATED
	TREE TO BE REMOVED
	TREE PROTECTION ZONE

1 WIRE MESH BARRIER DETAIL  
Scale: N.T.S.

SCALE: 3/16" = 1'-0"

0' 5' 10' 25'

1

**BIOLAND**  
BIOClimatic Landscapes LLC.

334 SW 96TH CT  
MIAMI, FL 33174  
M:786.319.2640  
bioclimaticlandscapes@gmail.com

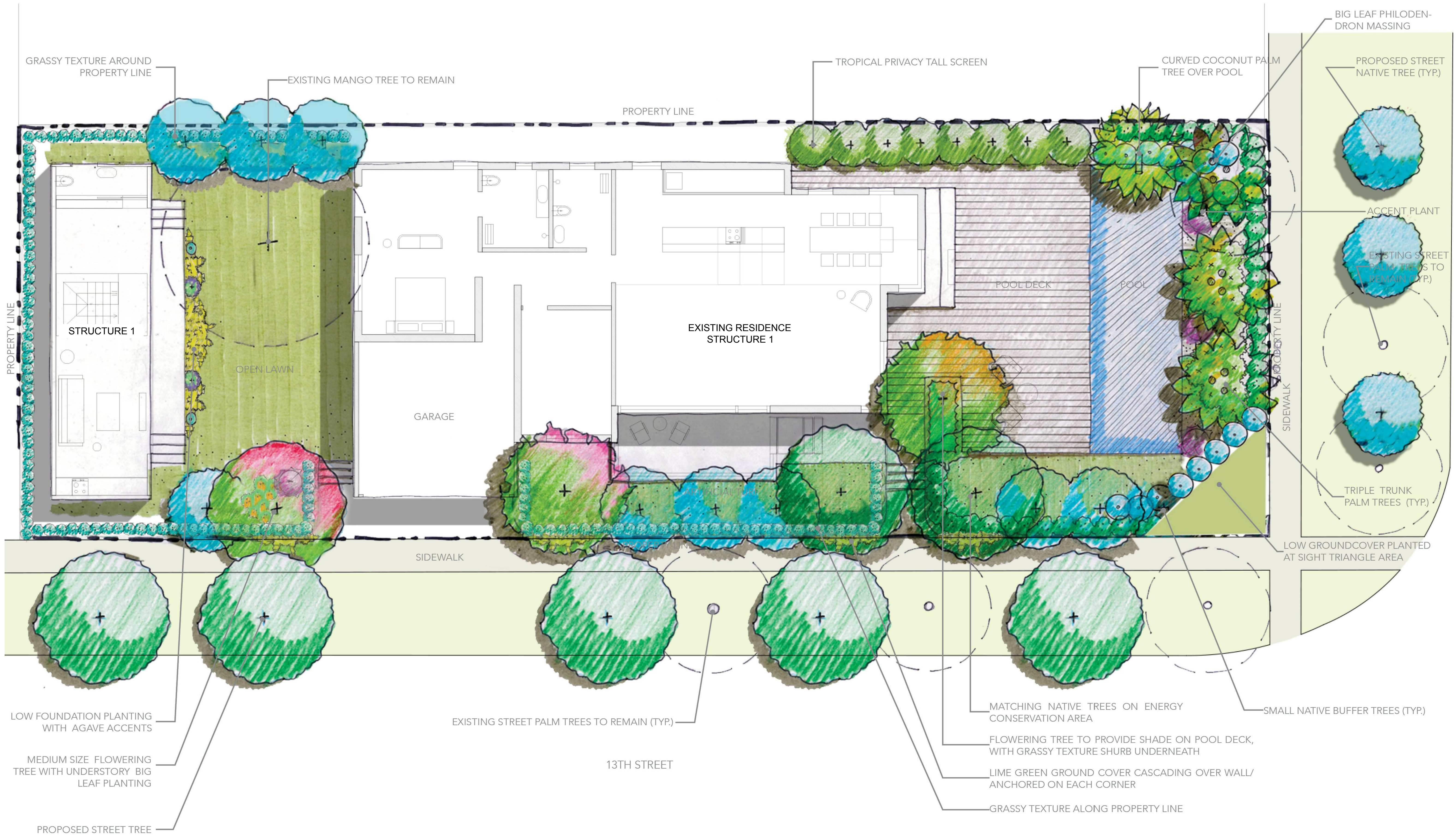
PROJECT NAME:  
**1300 LENOX ALTON ROAD**

PROJECT ADDRESS:  
1300 Lenox Avenue, Miami Beach, FL 33129

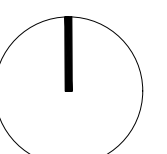
PROJECT NO: 20213  
DATE: 11/10/2021  
DRAWN: NAR  
CHECKED: RK

SHEET NO.  
**TD-1**





SCALE: 3/16" = 1'-0"





FLOWERING TREES



*Cassia javanica* / Pink Shower Tree



*Saraca indica* / Ashoka Tree

NATIVE TREES



*Bursera simaruba* / Gumbo Limbo



*Quercus virginiana* / Live Oak



*Conocarpus erectus* 'Sericeus' / Silver Buttonwood

NATIVE PALM TREES



*Cocos nucifera* 'Maypan' / Coconut Palm



*Sabal palm* / Cabagge Palm

PALM TREES

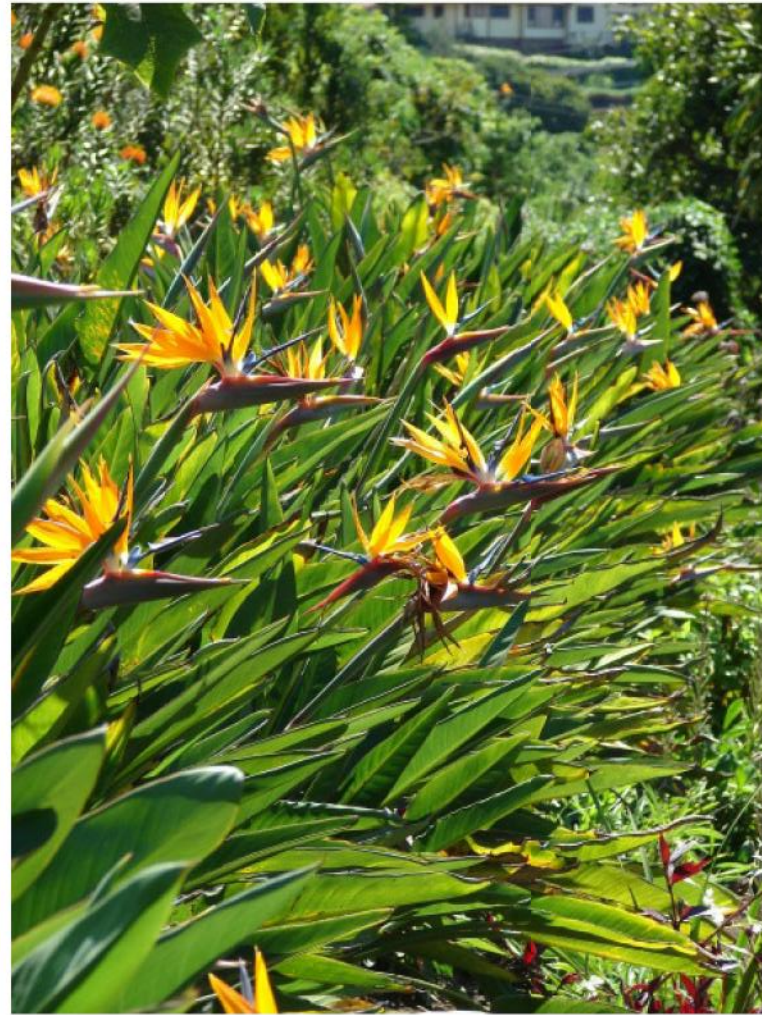


*Ptychosperma macarthurri* / Macarthur Palm



*Coccothrinax miraguama*

ACCENTS



*Strelitzia nicolai* / Bird of Paradise



*Vriesea ospinae* / Bromeliad

SHURBS



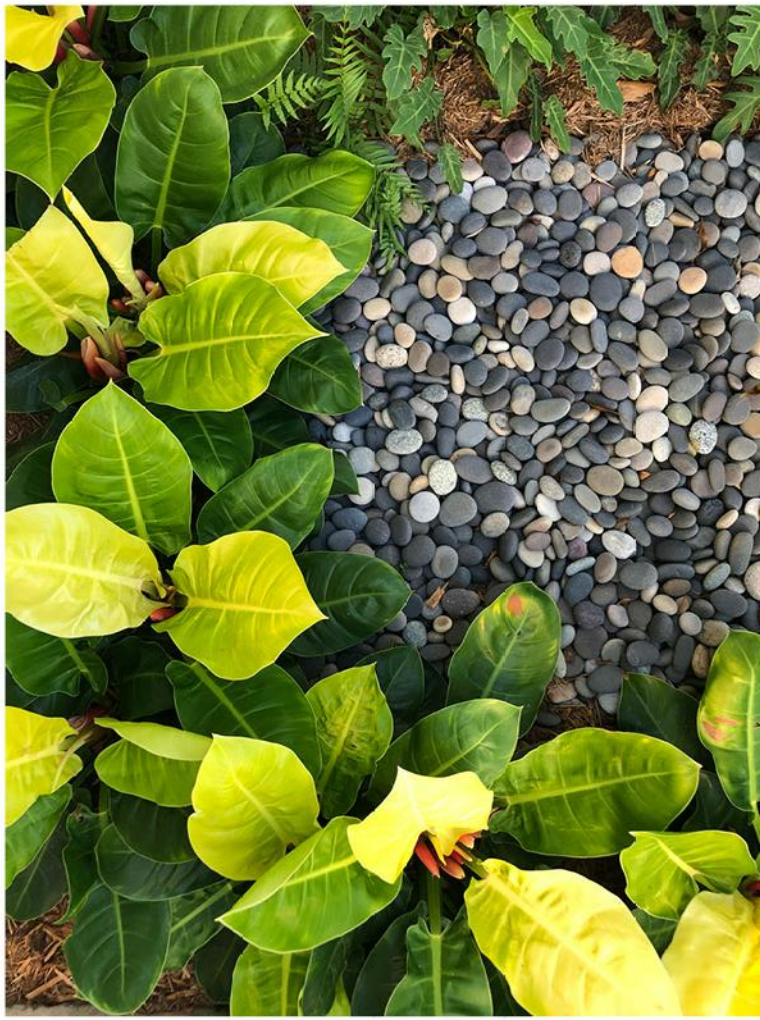
*Tripsacum floridiana* / Dwarf Fakahatchee



*Monstera deliciosa*



*Philodendron xanadu* / Same



*Philodendron* 'moonlight' / Same



*Hymenocallis latifolia* / Spicerlily



*Heliconia Psittacorum*



*Ernodea littoralis* / Golden Creeper

NATIVE TALL SHURB



*Clusia rosea* / Pitch Apple



*Gymnanthes lucida* / Crabwood



*Canella winterana*



*Bourreria cassinifolia*

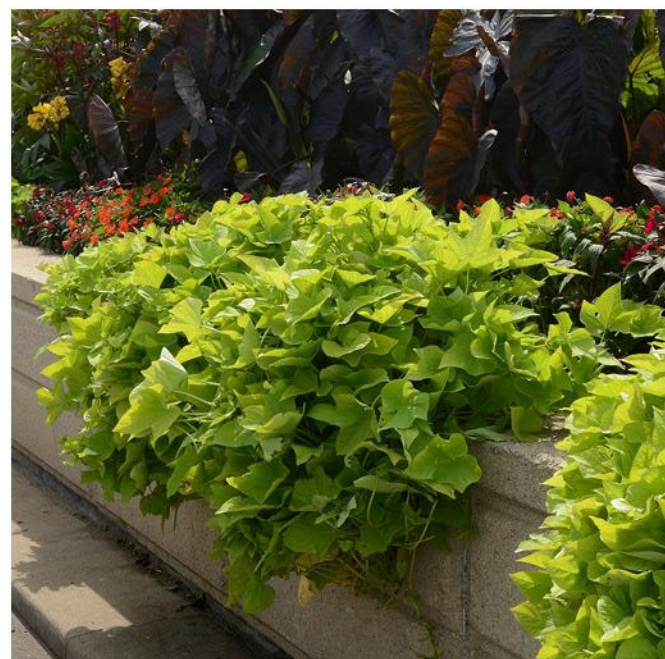


*Bourreria cassinifolia*

TROPICAL PRIVACY SCREEN



*Caryota mitis* / Fishtail Palm

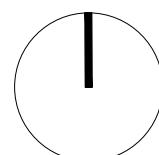


*Ipomoea marguerite*



*Springer's asparagus*

SCALE: 3/16" = 1'-0"



PROJECT NAME:  
**1300 LENOX ALTON ROAD**

PROJECT ADDRESS:

1300 Lenox Avenue, Miami Beach, FL 33129

NO. REVISIONS/ISSUE


DRAWING TITLE:

PLANT PALETTE

PROJECT NO: 20213  
DATE: 11/10/2021  
DRAWN: NAR  
CHECKED: RK

SHEET NO.

**SD-2**

**BIOLAND**  
BIOClimatic Landscapes LLC.  
334 SW 96TH CT  
MIAMI, FL 33174  
M: 786.319.2640  
bioclimaticlandscapes@gmail.com

RYAN JAHAN KING EBRAHIMIAN  
Registered Landscape Architect  
LA6667324



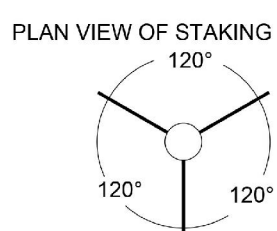






 TREE PLANTING DETAIL

SCALE: N.T.S.



ARBOR TIE  
(STAKING COMPONENTS  
MANUFACTURE BY STAKING  
SYSTEMS INC. OR APPROVED EQUAL>

 TREE STAKING DETAIL

SCALE: N.T.S.

5 TYPICAL SHRUB PLANTING DETAIL

( 5

PALM PLANTING DETAIL

SCALE: N.T.S



2. SOIL BERMS ARE TO BE CONSTRUCTED AT RIGHT ANGLES TO THE TREE OR SHRUB OR IN THE POSITION WHICH WILL MOST EFFECTIVELY SERVE THE PURPOSE OF RETAINING WATER AT THE BASE OF THE PLANT.

PALM STAKING DETAIL

SCALE: N.T.S

- SCALE: 3/16" = 1'-0"

**SCALE: 3/16" = 1'-0'**

