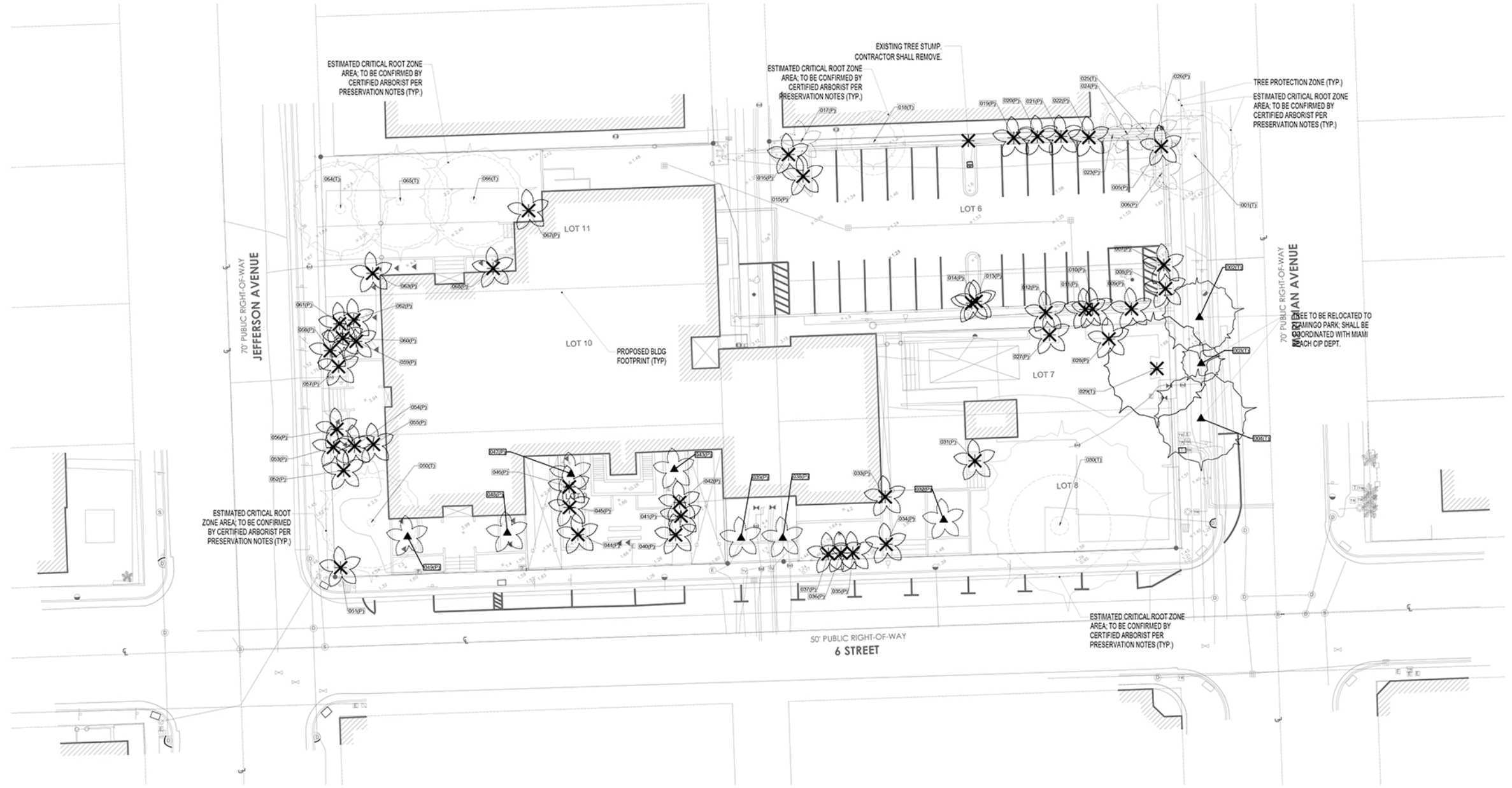




DRAWING FILE: P:\Projects\2020\04157 City Of Miami Beach Fire Station 01\CADD Files\Drawings\04157-D-TREE\_DEMO.dwg - (Plotted by: Gianni Fossi on Monday, December 20, 2021 11:49:59 AM)



**1 TREE DISPOSITION PLAN**

1:20



**PRELIMINARY NOT FOR CONSTRUCTION**

**CITY OF MIAMI BEACH  
FIRE STATION #01**

833 6TH STREET MIAMI BEACH, FL 33139

Project number  
**1929**

DISTRIBUTION

DATE	DATE
30% PLANS	12/13/2021

DISPOSITION PLAN

**LD-101**

**Wannemacher Jensen Architects, Inc.**  
180 Mirror Lake Drive North  
St. Petersburg, Florida 33701-3214  
(727) 822-5566 fax (727) 822-5475  
www.wjarc.com  
AA0002277

**Calvin, Giordano & Associates, Inc.**  
EXCEPTIONAL SOLUTIONS  
1800 E. 9th St., Suite 101, Fort Lauderdale, Florida 33316  
Phone: 954.321.1700 • Fax: 954.321.0807

STATE OF FLORIDA REGISTERED PROFESSIONAL LANDSCAPE ARCHITECT  
LICENSE NO. 1038



TREE MITIGATION CALCULATOR DATA CHART				
ITEM	SPECIE	TOTAL SUM OF INCHES REMOVED	REQUIRED REPLACEMENT TREES AND MINIMUM SIZE PER CODE	
1	Swietenia mahagoni (Mahogany Tree)	15.5"	/ 6" (1 TREE UNIT) = MIN. 3 TREES @ 16' HT, 8' Sprd, 4" DBH	
TOTAL SUM OF CANOPY MITIGATION TREES REQUIRED			3 TREES	@ 16' HT, 8' Sprd, 4" DBH
TOTAL SUM OF CANOPY MITIGATION TREES PROVIDED			3 TREES	@ 16' HT, 8' Sprd, 4" DBH
TOTAL DEFICIENCY OF MITIGATION			0 TREES	@ 16' HT, 8' Sprd, 4" DBH

PALM MITIGATION CALCULATOR DATA CHART				
ITEM	SPECIE	TOTAL NUMBER OF REMOVALS	TREE UNIT PER PALM EXCEEDING 15' OAH HT	REQUIRED REPLACEMENT TREES AND MINIMUM SIZE PER CODE
2	Archontophoenix alexandrae (Alexander Palm)	3	x 1 = MIN.	3 TREES @ 12' HT, 6' Sprd, 2" DBH
3	Coccothrinax argentata (Florida Silver Palm)	1	x 1 = MIN.	1 TREES @ 12' HT, 6' Sprd, 2" DBH
4	Livistona chinensis (Chinese Fan Palm)	3	x 1 = MIN.	3 TREES @ 12' HT, 6' Sprd, 2" DBH
5	Phoenix reclinata (Wild Date Palm)	1	x 1 = MIN.	1 TREES @ 12' HT, 6' Sprd, 2" DBH
6	Sabal palmetto (Cabbage Palm)	13	x 1 = MIN.	13 TREES @ 12' HT, 6' Sprd, 2" DBH
7	Thrinax radiata (Florida Thatch Palm)	2	x 1 = MIN.	2 TREES @ 12' HT, 6' Sprd, 2" DBH
TOTAL SUM OF PALM MITIGATION TREES REQUIRED				23 TREES @ 12' HT, 6' Sprd, 2" DBH
TOTAL SUM OF PALM MITIGATION TREES PROVIDED				23 TREES @ 12' HT, 6' Sprd, 2" DBH
TOTAL DEFICIENCY OF MITIGATION				0 TREES @ 12' HT, 6' Sprd, 2" DBH

**TREE MITIGATION SPECIES:**

- 3 QTY - *QUERCUS VIRGINIANA* 'CATHEDRAL' - CATHEDRAL LIVE OAK (FIELD GROWN, 16' MIN OAH, 4" MIN DBH, 8" MIN. SPRD, 7" MIN CT, FLORIDA NO. 1)

**PALM MITIGATION SPECIES:**

- 4 QTY - *CONOCARPUS ERECTUS* - GREEN BUTTONWOOD (FIELD GROWN, 12' MIN OAH, 3" MIN DBH, STANDARD, FLORIDA NO. 1)
- 14 QTY - *EUGENIA FOETIDA* - SPANISH STOPPER (FIELD GROWN, 12' MIN OAH, 3" MIN DBH, MULTI-FORM, FLORIDA NO. 1)
- 5 QTY - *GUAJACUM SANCTUM* - LIGNUM VITAE (FIELD GROWN, 12' MIN OAH, 3" MIN DBH, STANDARD, FLORIDA NO. 1)



**Wannemacher Jensen Architects, Inc.**  
 180 Mirror Lake Drive North  
 St. Petersburg, Florida 33701-3214  
 (727) 822-5566 fax (727) 822-5475  
 www.wjarc.com  
 IA-A0002277  
 @WannemacherJensenArchitects, Inc.

THE ARCHITECT'S LIABILITY IS LIMITED BY THE CONTRACT AND THE ARCHITECT'S NEGLIGENCE AND NOT BY THE STATE OF FLORIDA. THE ARCHITECT'S LIABILITY IS LIMITED BY THE CONTRACT AND THE ARCHITECT'S NEGLIGENCE AND NOT BY THE STATE OF FLORIDA. THE ARCHITECT'S LIABILITY IS LIMITED BY THE CONTRACT AND THE ARCHITECT'S NEGLIGENCE AND NOT BY THE STATE OF FLORIDA.

SUB-CONSULTANT LANDSCAPE ARCHITECTURE



**Calvin, Giordano & Associates, Inc.**  
 EXCEPTIONAL SOLUTIONS  
 1800 E. 15th Street, Suite 101, St. Petersburg, Florida 33716  
 Phone: (727) 321-7700 • Fax: (727) 321-7700

CERTIFICATE OF AUTHORIZATION (C-100000)  
 C-100000-000000-000000

THOMAS J. COOK-MEDSON, P.L.A.  
 STATE OF FLORIDA REGISTERED PROFESSIONAL LANDSCAPE ARCHITECT  
 LICENSE NO. 1038



PRELIMINARY NOT FOR CONSTRUCTION

**CITY OF MIAMI BEACH  
 FIRE STATION #01**

Project number  
**1929**

DISTRIBUTION

Milestone	Date
30% PLANS	12/13/2021

MITIGATION SCHEDULES

**LP-002**

833 6TH STREET MIAMI BEACH, FL 33139



Wannemacher Jensen Architects, Inc.  
180 Mirror Lake Drive North  
St. Petersburg, Florida 33701-3214  
(727) 822-5566 Fax (727) 822-5475  
www.wjarc.com  
IAA0002277



Calvin, Giordano & Associates, Inc.  
EXCEPTIONAL SOLUTIONS  
1800 E. 11th St., Suite 101, Lakeland, Florida 33701  
Phone: (813) 778-1171 Fax: (813) 778-1172  
www.cga-ia.com

REQUIRED TREES VS. PROVIDED TREES					
FUTURE LAND USE LANDSCAPE REQUIREMENTS (RM-1 FLU):					
CODE REQUIREMENT	CALCULATION	REQUIRED # OF TREES/SHRUBS	PROVIDED # OF TREES/SHRUBS	PLANTED OFFSITE	TREE SPECIFICATIONS
28 Trees / Acre of Net Lot Area	1.03 ACRES x 28 (45,000 SQFT)	29	20	9	12' HEIGHT, 6' SPREAD, 2" DBH
12 shrubs / number of required trees	29 Req Trees x 12	348	4327	0	18-24" HEIGHT, 18" SPACING
Small Trees (Large Shrubs) shall be 10% of required shrubs	348 Req Shrubs x .10	35	35	0	6' HEIGHT, 4' SPREAD
LANDSCAPE BUFFER REQUIREMENTS:					
CODE REQUIREMENT	TOTAL REQUIRED # OF TREES/SHRUBS	EXISTING # OF TREES/SHRUBS	PROPOSED # OF TREES/SHRUBS	PLANTED OFFSITE	TREE SPECIFICATIONS
Trees planted at max. spacing of 20' OC	15	2	8	5	12' HEIGHT, 6' SPREAD, 2" DBH
Continuous screening of shrubs between land uses OR vines with approved fencing	327	0	327	0	18-24" HEIGHT, 18" SPACING
LANDSCAPE AREAS IN PERMANENT PARKING LOTS REQUIREMENTS:					
CODE REQUIREMENT	TOTAL REQUIRED # OF TREES	EXISTING # OF TREES	PROVIDED # OF TREES	PLANTED OFFSITE	TREE SPECIFICATIONS
Trees at end of parking rows		6	5	1	MIN. 12' HEIGHT, 6' SPREAD, 2" DBH
Shrubs at end of parking rows		743	743	0	18-24" HEIGHT, 18" SPACING
Tree median every 90 linear feet of parking		1	0	1	MIN. 12' HEIGHT, 6' SPREAD, 2" DBH
STREET TREE REQUIREMENTS:					
CODE REQUIREMENT	TOTAL REQUIRED # OF TREES	EXISTING # OF TREES	PROPOSED # OF TREES	PLANTED OFFSITE	TREE SPECIFICATIONS
Street Trees planted at max. average spacing of 20' o.c.	31	3	13	15	MIN. MATURE HEIGHT OF 20' W/ MIN. CLEAR TRUNK OF 4', MIN. HEIGHT OF 12'-14' OA, & MIN. 3" CALIPER AT TIME OF PLANTING

TOTAL NUMBER OF REQUIRED CANOPY TREES TO BE PLANTED OFFSITE: 31 TREES

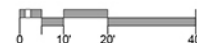
PROPOSED PLANT LIST				
Abbrev	Qty	Scientific Name	Common Name	Specifications
<b>LARGE CANOPY TREES</b>				
BSG	2	Bursera simaruba	Gumbo Limbo	Field Grown, 16' Min OAH, 4" Min DBH, 8' Min. Sprd, Florida No. 1
LSM	6	Lysioloma sabicu	Wild Tamarind Tree	Field Grown, 16' Min OAH, 4" Min DBH, 8' Min. Sprd, 7' Min CT, Florida No. 1
QVL	1	Quercus virginiana	Southern Live Oak	Field Grown, 16' Min OAH, 4" Min DBH, 8' Min. Sprd, 7' Min CT, Florida No. 1
QVC	4	Quercus virginiana 'Cathedral'	Cathedral Live Oak	Field Grown, 16' Min OAH, 4" Min DBH, 8' Min. Sprd, 7' Min CT, Florida No. 1
<b>SMALL CANOPY TREES</b>				
CEG	5	Conocarpus erectus	Green Buttonwood	Field Grown, 12' Min OAH, 3" Min DBH, Standard, Florida No. 1
CES	25	Conocarpus erectus 'Sericea'	Silver Buttonwood	Field Grown, 12' Min OAH, 3" Min DBH, Standard, Florida No. 1
EFS	18	Eugenia foetida	Spanish Stopper	Field Grown, 12' Min OAH, 3" Min DBH, Multi-form, Florida No. 1
LVI	7	Guaiacum sanctum	Lignum vitae	Field Grown, 12' Min OAH, 3" Min DBH, Standard, Florida No. 1
LG	2	Ligustrum japonicum	Japanese Privet	Field Grown, 12' Min OAH, 3" Min DBH, Multi-form, Florida No. 1
SFS	5	Plumeria obtusa	Singapore Frangipani	Field Grown, 12' Min OAH, 3" Min DBH, Standard, Florida No. 1
<b>PALM TREES</b>				
PDP	3	Phoenix dactylifera 'Medjool'	Medjool Date Palm	FG, 16' Wood, Florida Fancy
PES	15	Ptychosperma elegans 'Single'	Solitaire Palm, Single	FG, 8' Wood, Single, Florida Fancy
PET	9	Ptychosperma elegans 'Triple'	Solitaire Palm, Triple	FG, 8' Wood, Triple, Florida Fancy
<b>SHRUBS</b>				
CME	184	Carissa macrocarpa 'Emerald Blanket'	Dwarf Emerald Blanket Carissa	3 Gal., Full to Base, 2' OA Ht x 2' Sprd, Max 2' O.C.
CCP	59	Chamaedorea cataractarum	Cat Palm	3 Gal., Full to Base, 2' OA Ht x 2' Sprd, Max 2' O.C.
CHI	76	Chrysobalanus icaco 'Horizontalis'	Cocoplum	3 Gal., Full to Base, 2' OA Ht x 2' Sprd, Max 2' O.C.
CLU	173	Clusia rosea	Pitch Apple	3 Gal., Full to Base, 2' OA Ht x 2' Sprd, Max 2' O.C.
DCV	102	Codiaeum variegatum 'Mammy Fire'	Dwarf Corkscrew Croton 'Mammy Fire'	3 Gal., Full to Base, 2' OA Ht x 2' Sprd, Max 2' O.C.
DTF	411	Dianella tasmanica 'Variegata'	Variegated Flax Lily	3 Gal., Full to Base, 2' OA Ht x 2' Sprd, Max 2' O.C.
DIC	20	Dioon edule	Dioon	1 Gal., Full to Base, 12" OA Ht x 12" Sprd, Max 18" O.C.
FMG	176	Ficus microcarpa 'Green Island'	Green Island Ficus	3 Gal., Full to Base, 2' OA Ht x 2' Sprd, Max 2' O.C.
LIR	802	Liriope muscari	Lily Turf	3 Gal., Full to Base, 2' OA Ht x 2' Sprd, Max 2' O.C.
MSW	488	Microsorium scolopendrium 'Wart Fern'	Wart Fern	3 Gal., Full to Base, 2' OA Ht x 2' Sprd, Max 2' O.C.
MDP	130	Monstera deliciosa	Swiss Cheese Philodendron	3 Gal., Full to Base, 2' OA Ht x 2' Sprd, Max 2' O.C.
NBM	78	Nephrolepis biserrata	Macho Fern	3 Gal., Full to Base, 2' OA Ht x 2' Sprd, Max 2' O.C.
NEB	196	Nephrolepis exaltata	Boston Fern	1 Gal., Full to Base, 12" OA Ht x 12" Sprd, Max 18" O.C.
POP	238	Peperomia obtusifolia	Florida Peperomia	3 Gal., Full to Base, 2' OA Ht x 2' Sprd, Max 2' O.C.
PBM	66	Philodendron 'Burle Marx'	Philodendron 'Burle Marx'	3 Gal., Full to Base, 2' OA Ht x 2' Sprd, Max 2' O.C.
PGM	20	Philodendron 'Giganteum'	Giant Philodendron	3 Gal., Full to Base, 2' OA Ht x 2' Sprd, Max 2' O.C.
PRC	152	Philodendron 'Rojo Congo'	Rojo Congo Philodendron	Full to base, 7 gal. 30" o.c.
PXU	116	Philodendron 'Xanadu'	Philodendron 'Xanadu'	Full to base, 3 gal. 24" o.c.
PMP	33	Podocarpus macrophyllus 'Pringles'	Pringles Podocarpus	Full to base, 3 gal. 24" o.c.
PNW	69	Psychotria nervosa	Wild Coffee	Full to base, 3 gal. 24" o.c.
DPN	252	Psychotria nervosa 'Little Psycho'	Dwarf Wild Coffee	Full to base, 3 gal. 24" o.c.
REL	24	Rhipis excelsa	Lady Palm	Full to base, 15 gal. 36" o.c.
RBM	23	Ruellia brittoniana	Mexican Petunia	Full to base, 3 gal. 24" o.c.
SBC	43	Spartina bakeri	Cordgrass	Full to base, 3 gal. 24" o.c.
TPP	1340	Tradescantia pallida	Purple Queen	Full to base, 1 gal. 12" o.c.
TDF	416	Tripsacum dactyloides	Fakahatchee Grass	Full to base, 3 gal. 24" o.c.
<b>GROUNDCOVERS BY AREA</b>				
	285 sqft	Arachis glabrata	Perennial Peanut	

Notes:  
 1. General Contractor shall be responsible for verifying all quantities in accordance to the permitted plant list.  
 2. All shrubs shall be free of fungus, insects and from all disease.  
 3. All vegetation shall have root balls fully grown into the specified container - recently transplanted material into up-sized containers shall not be accepted.  
 4. All quantities of proposed trees and shrubs do not account for mitigated trees. Quantities for mitigated trees can be found in the tree mitigation plan set on sheet L-P201.

PROPOSED OFF-SITE PLANT LIST				
Abbrev	Qty	Scientific Name	Common Name	Specifications
<b>FUTURE LAND USE LANDSCAPE REQUIREMENTS (9 TREES)</b>				
CEG	3	Conocarpus erectus	Green Buttonwood	Field Grown, 12' Min OAH, 2" Min DBH, 6' Sprd, Standard, Florida No. 1
CES	3	Conocarpus erectus 'Sericea'	Silver Buttonwood	Field Grown, 12' Min OAH, 2" Min DBH, 6' Sprd, Standard, Florida No. 1
EFS	3	Eugenia foetida	Spanish Stopper	Field Grown, 12' Min OAH, 2" Min DBH, 6' Sprd, Standard, Florida No. 1
<b>LANDSCAPE BUFFER REQUIREMENTS (5 TREES)</b>				
CEG	3	Conocarpus erectus	Green Buttonwood	Field Grown, 12' Min OAH, 2" Min DBH, 6' Sprd, Standard, Florida No. 1
CES	2	Conocarpus erectus 'Sericea'	Silver Buttonwood	Field Grown, 12' Min OAH, 2" Min DBH, 6' Sprd, Standard, Florida No. 1
<b>LANDSCAPE AREAS IN PERMANENT PARKING LOTS REQUIREMENTS (2 TREES)</b>				
CES	2	Conocarpus erectus 'Sericea'	Silver Buttonwood	Field Grown, 12' Min OAH, 2" Min DBH, 6' Sprd, Standard, Florida No. 1
<b>STREET TREE REQUIREMENTS (15 TREES)</b>				
CEG	3	Conocarpus erectus	Green Buttonwood	Field Grown, 20' Min Mature Height; 12' Min OAH, 4' Min Clear Trunk, 3" Min Caliper at Time of Planting
CES	3	Conocarpus erectus 'Sericea'	Silver Buttonwood	Field Grown, 20' Min Mature Height; 12' Min OAH, 4' Min Clear Trunk, 3" Min Caliper at Time of Planting
LVI	3	Guaiacum sanctum	Lignum vitae	Field Grown, 20' Min Mature Height; 12' Min OAH, 4' Min Clear Trunk, 3" Min Caliper at Time of Planting
QVL	3	Quercus virginiana	Southern Live Oak	Field Grown, 20' Min Mature Height; 12' Min OAH, 4' Min Clear Trunk, 3" Min Caliper at Time of Planting
BSG	3	Bursera simaruba	Gumbo Limbo	Field Grown, 20' Min Mature Height; 12' Min OAH, 4' Min Clear Trunk, 3" Min Caliper at Time of Planting

Notes:  
 1. General Contractor shall be responsible for verifying all quantities in accordance to the permitted plant list.  
 2. All shrubs shall be free of fungus, insects and from all disease.  
 3. All vegetation shall have root balls fully grown into the specified container - recently transplanted material into up-sized containers shall not be accepted.  
 4. All quantities of proposed trees and shrubs do not account for mitigated trees. Quantities for mitigated trees can be found in the tree mitigation plan set on sheet L-P201.

DRAWING FILE: P:\Projects\2020\04157 City Of Miami Beach Fire Station 01\CADD Files\Drawings\04157-LP-PLANT-SCHED.dwg - (Plotted by: Gianni Foch on Monday, December 20, 2021 11:48:38 AM)



PRELIMINARY NOT FOR CONSTRUCTION

CITY OF MIAMI BEACH  
FIRE STATION #01

833 6TH STREET MIAMI BEACH, FL 33139

Project number  
**1929**

DISTRIBUTION

DATE	DESCRIPTION
12/13/2021	30% PLANS

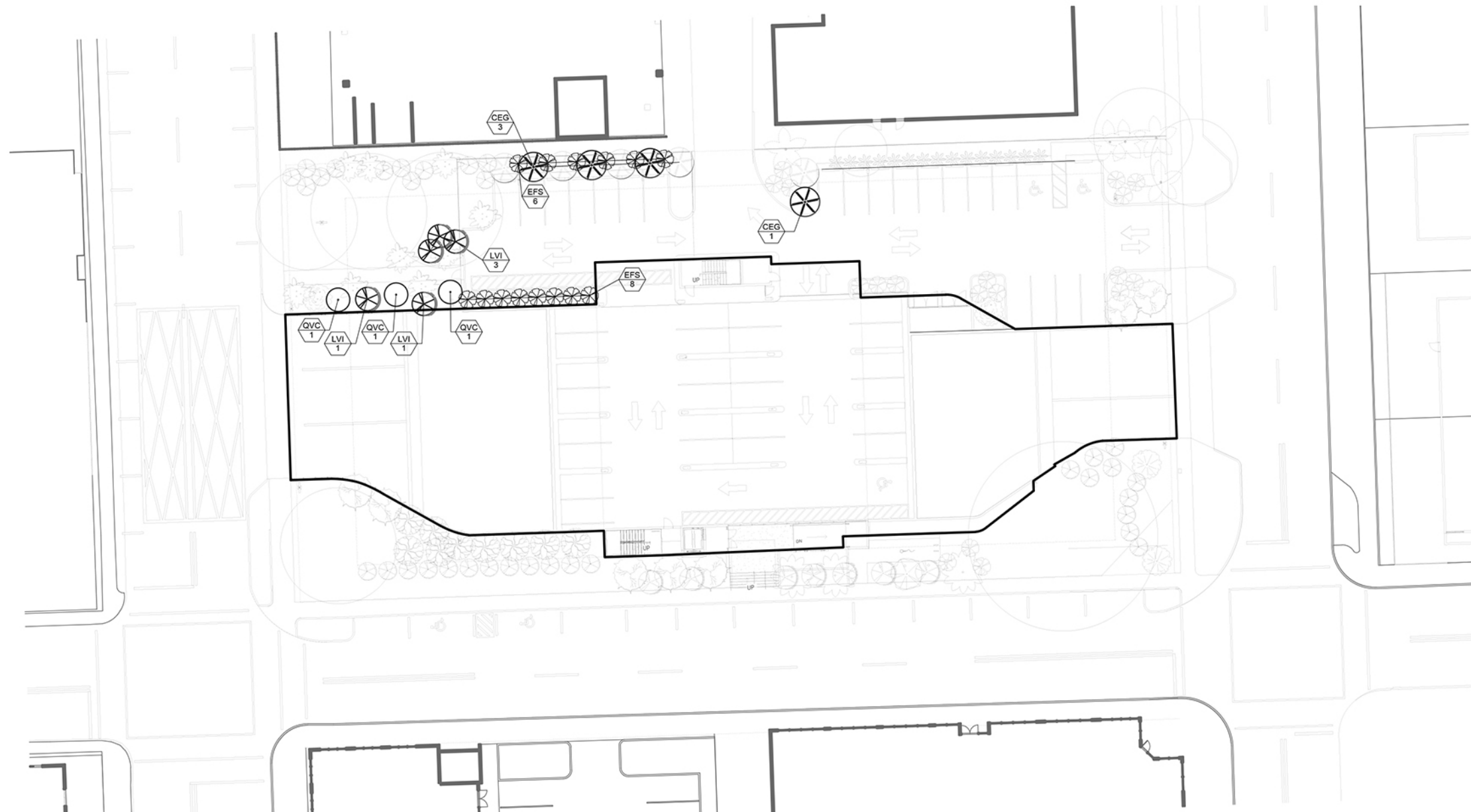
PLANTING SCHEDULES

**LP-003**

DRAWING FILE: P:\Projects\2020\204157 City Of Miami Beach Fire Station 01\CADD Files\Drawings\204157-LP-PLANT.MITG.dwg - (Plotted by: Gianni Fofi on Monday, December 20, 2021 11:46:04 AM)

1 TREE MITIGATION PLAN

1:20



TREE MITIGATION SPECIES:

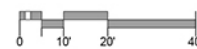
3 QTY - *QUERCUS VIRGINIANA* 'CATHEDRAL' - **CATHEDRAL LIVE OAK** (FIELD GROWN, 16' MIN OAH, 4" MIN DBH, 8' MIN. SPRD, 7' MIN CT, FLORIDA NO. 1)

PALM MITIGATION SPECIES:

4 QTY - *CONOCARPUS ERECTUS* - **GREEN BUTTWOOD** (FIELD GROWN, 12' MIN OAH, 3" MIN DBH, STANDARD, FLORIDA NO. 1)

5 QTY - *GUAIACUM SANCTUM* - **LIGNUM VITAE** (FIELD GROWN, 12' MIN OAH, 3" MIN DBH, STANDARD, FLORIDA NO. 1)

14 QTY - *EUGENIA FOETIDA* - **SPANISH STOPPER** (FIELD GROWN, 12' MIN OAH, 3" MIN DBH, MULTI-FORM, FLORIDA NO. 1)



PRELIMINARY NOT FOR CONSTRUCTION

CITY OF MIAMI BEACH  
FIRE STATION #01

833 6TH STREET MIAMI BEACH, FL 33139

Project number  
1929

DISTRIBUTION

DATE	REVISION
12/13/2021	30% PLANS

TREE MITIGATION PLAN

LP-201

THE INFORMATION CONTAINED HEREIN IS FOR THE EXCLUSIVE USE OF THE CLIENT AND IS NOT TO BE REPRODUCED, COPIED, OR TRANSMITTED IN ANY FORM OR BY ANY MEANS, ELECTRONIC OR MECHANICAL, INCLUDING PHOTOCOPYING, RECORDING, OR BY ANY INFORMATION STORAGE AND RETRIEVAL SYSTEM. WITHOUT THE WRITTEN PERMISSION OF WANNEMACHER JENSEN ARCHITECTS, INC., NO PART OF THIS DOCUMENT IS TO BE REPRODUCED OR TRANSMITTED IN ANY FORM OR BY ANY MEANS, ELECTRONIC OR MECHANICAL, INCLUDING PHOTOCOPYING, RECORDING, OR BY ANY INFORMATION STORAGE AND RETRIEVAL SYSTEM. WITHOUT THE WRITTEN PERMISSION OF WANNEMACHER JENSEN ARCHITECTS, INC.

SUB-CONSULTANT: LANDSCAPE ARCHITECTURE



**Calvin, Giordano & Associates, Inc.**  
 EXCEPTIONAL SOLUTIONS  
 1800 E. 9th Street, Suite 101, Fort Lauderdale, Florida 33316  
 Phone: 954.212.1770 • Fax: 954.212.1800

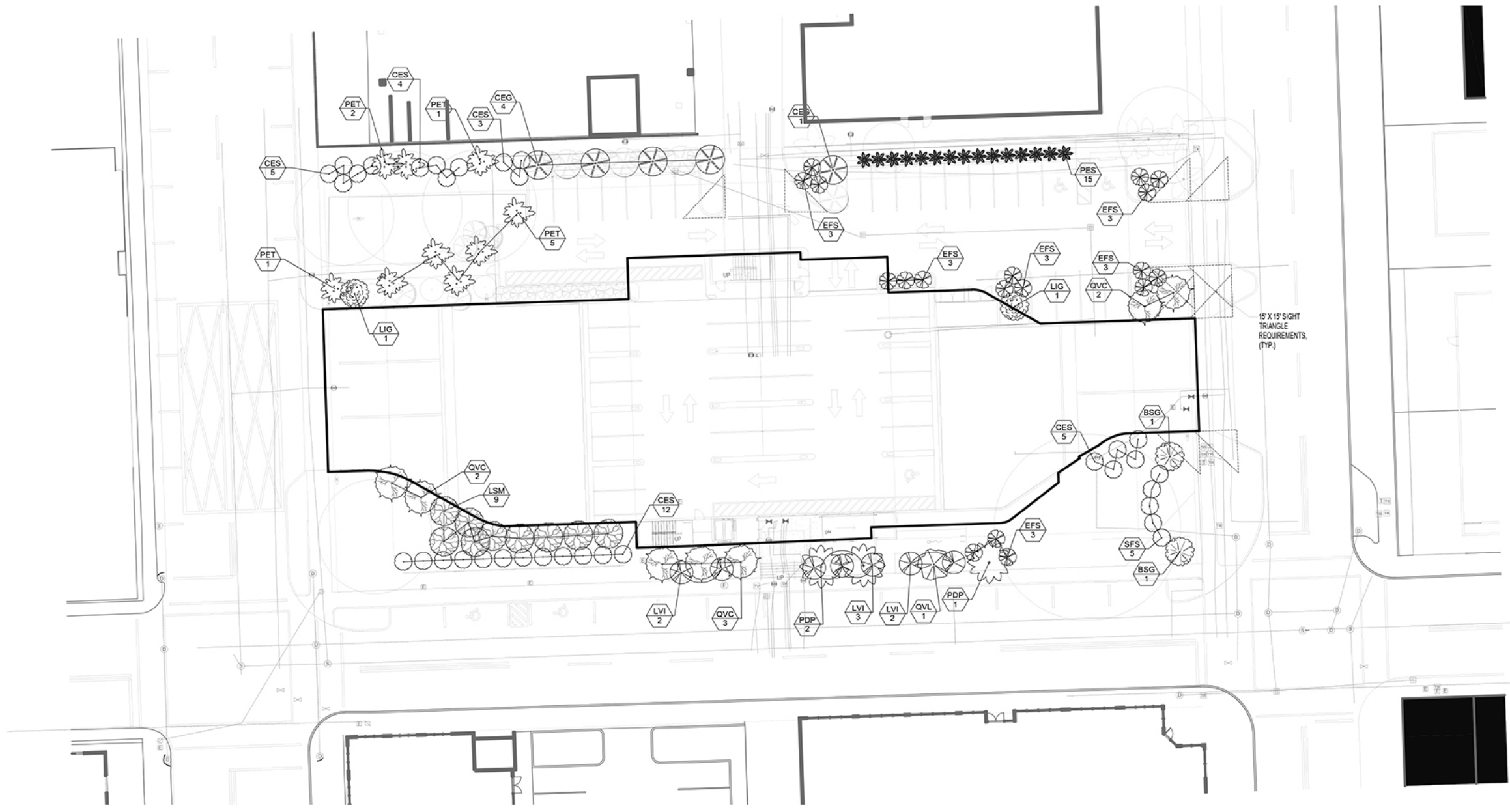
CERTIFICATE OF AUTHORIZATION LICENSE  
 LSA 19087-FL-0001-0001

THOMAS J. COOK-MEYER, P.L.A.  
 STATE OF FLORIDA REGISTERED PROFESSIONAL LANDSCAPE ARCHITECT  
 LICENSE NO. 1258

**Wannemacher Jensen Architects, Inc.**  
 180 Mirror Lake Drive North  
 St. Petersburg, Florida 33701-3214  
 (727) 822-5566 fax (727) 822-5475  
 www.wjarc.com  
 AA0002277  
 @WannemacherJensenArchitects, Inc.



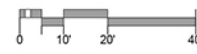
DRAWING FILE: P:\Projects\2020\04157 City Of Miami Beach Fire Station 01\CADD Files\Drawings\04157-LP-PLANT.dwg - (Plotted by: Gianni Foli on Monday, December 20, 2021 11:43:05 AM)



1 CANOPY PLANTING PLAN

1:20

- |  |   |   |
|--|---|---|
| <b>LARGE CANOPY TREES</b>  | <b>SMALL TREES</b>  | <b>PALM TREES</b>   |
| BSG <b>GUMBO LIMBO</b><br><i>Bursera simaruba</i>                      | CEG <b>GREEN BUTTONWOOD</b><br><i>Conocarpus erectus</i>            | PDP <b>MEDJOOI DATE PALM</b><br><i>Phoenix dactylifera 'Medjool'</i>      |
| LSM <b>WILD TAMARIND TREE</b><br><i>Lysiloma sabicu</i>                | CES <b>SILVER BUTTONWOOD</b><br><i>Conocarpus erectus 'Sericea'</i> | PES <b>SOLITAIRE PALM, SINGLE</b><br><i>Ptychosperma elegans 'Single'</i> |
| QVL <b>SOUTHERN LIVE OAK</b><br><i>Quercus virginiana</i>              | EFS <b>SPANISH STOPPER</b><br><i>Eugenia foetida</i>                | PET <b>SOLITAIRE PALM, TRIPLE</b><br><i>Ptychosperma elegans 'Triple'</i> |
| QVC <b>CATHEDRAL LIVE OAK</b><br><i>Quercus virginiana 'Cathedral'</i> | LVI <b>LIGNUM VITAE</b><br><i>Guaiaacum sanctum</i>                 |   |
|  | LIG <b>JAPANESE PRIVET</b><br><i>Ligustrum japonicum</i>            |   |
|  | SFS <b>SINGAPORE FRANGIPANI</b><br><i>Plumeria obtusa</i>           |   |



PRELIMINARY NOT FOR CONSTRUCTION

**Wannemacher Jensen Architects, Inc.**  
 180 Mirror Lake Drive North  
 St. Petersburg, Florida 33701-3214  
 (727) 822-5566 fax (727) 822-5475  
 www.wjarc.com  
 AA-0002277  
 @Wannemacher Jensen Architects, Inc.

THE ARCHITECT'S OBLIGATION AS AN ENGINEER AND AS A PROFESSIONAL LANDSCAPE ARCHITECT... SUB-CONSULTANT: LANDSCAPE ARCHITECTURE

**Calvin, Giordano & Associates, Inc.**  
**EXCEPTIONAL SOLUTIONS™**  
 18001 E. Old Dixie Highway, Suite 100, Fort Lauderdale, Florida 33316  
 Phone: 954.212.1700 • Fax: 954.212.1800  
 CERTIFICATE OF AUTHORIZATION: 000000000  
 00A-PROJECT NUMBER: 00000

THOMAS J. COOK-MEDSON, P.A. STATE OF FLORIDA REGISTERED PROFESSIONAL LANDSCAPE ARCHITECT LICENSE NO. 123

**CITY OF MIAMI BEACH  
 FIRE STATION #01**  
 833 6TH STREET MIAMI BEACH, FL 33139

Project number  
 1929

DISTRIBUTION

DATE	DATE
30% PLANS	12/13/2021

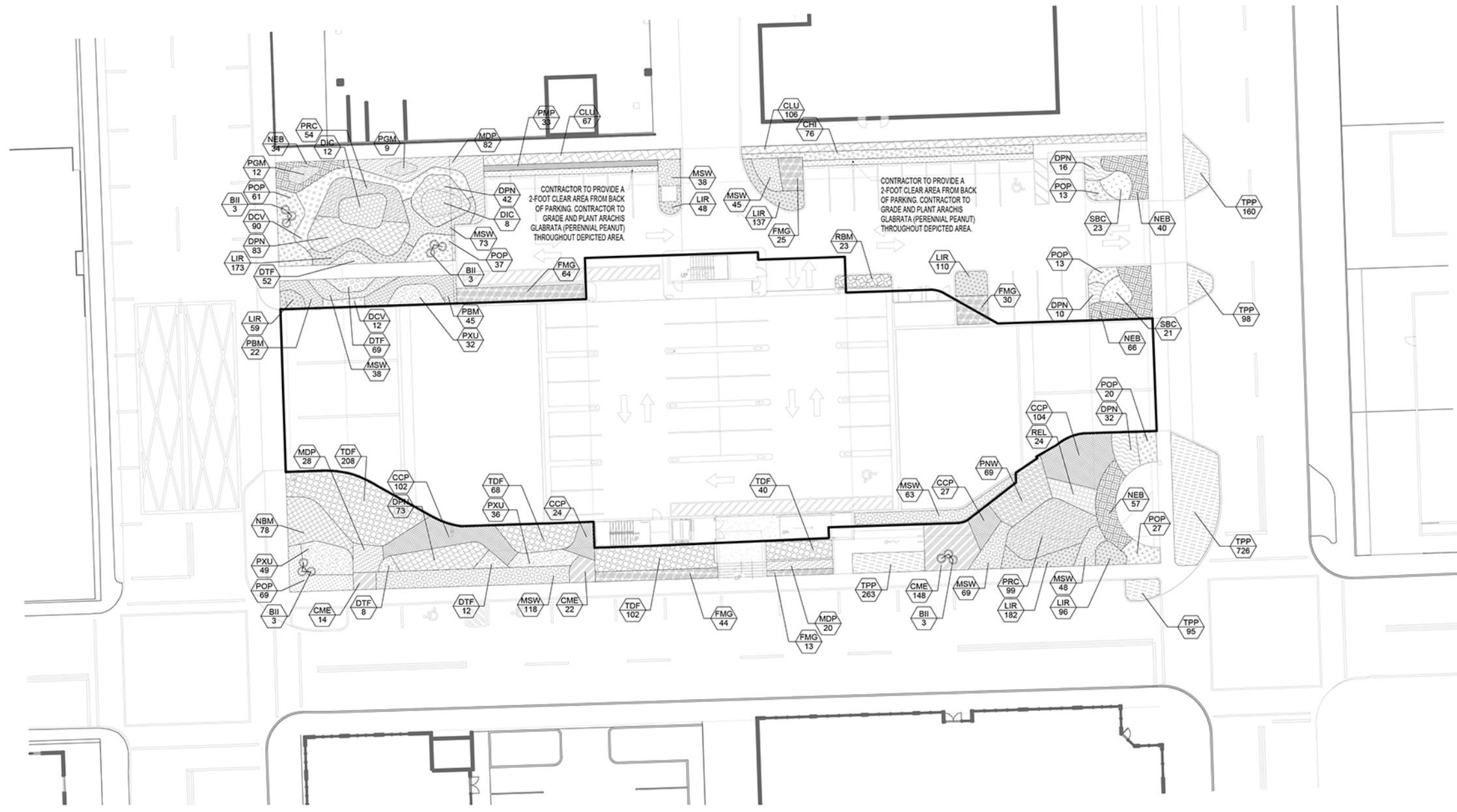
CANOPY PLANTING PLAN

**LP-301**

DRAWING FILE: P:\Projects\2020\04157 City Of Miami Beach Fire Station 01\CADD Files\Drawings\04157-LP-PLANT.dwg - (Plotted by: Gianni Foli on Monday, December 20, 2021 11:42:34 AM)

**1 UNDERSTORY PLANTING PLAN**

1:20



PROPOSED UNDERSTORY PLANTING					
CME	DWARF EMERALD BLANKET CARISSA <i>Carissa macrocarpa 'Emerald Blanket'</i>	NEB	BOSTON FERN <i>Nephrolepis exaltata</i>	TPP	PURPLE QUEEN <i>Tradescantia pallida</i>
CCP	CAT PALM <i>Chamaedorea cataractarum</i>	POP	FLORIDA PEPEROMIA <i>Peperomia obtusifolia</i>	TDF	FAKAHATCHEE GRASS <i>Tripsacum dactyloides</i>
CHI	COCOPLUM <i>Chrysobalanus icaco 'Horizontalis'</i>	PBM	PHILODENDRON 'BURLE MARX' <i>Philodendron 'Burle Marx'</i>	-	PERENNIAL PEANUT <i>Arachis glabrata</i>
CLU	PITCH APPLE <i>Clusia rosea</i>	PGM	GIANT PHILODENDRON <i>Philodendron 'Giganteum'</i>		
DCV	DWARF CORKSCREW CROTON 'MAMMY FIRE' <i>Codiaeum variegatum 'Mammy Fire'</i>	PRC	ROJO CONGO PHILODENDRON <i>Philodendron 'Rojo Congo'</i>		
DTF	VARIEGATED FLAX LILY <i>Dianella tasmanica 'Variegata'</i>	PXU	PHILODENDRON 'XANADU' <i>Philodendron 'Xanadu'</i>		
DIC	DIOON <i>Dioon edule</i>	PMP	PRINGLES PODOCARPUS <i>Podocarpus macrophyllus 'Pringles'</i>		
FMG	GREEN ISLAND FICUS <i>Ficus microcarpa 'Green Island'</i>	PNW	WILD COFFEE <i>Psychotria nervosa</i>		
LIR	LILY TURF <i>Liriope muscari</i>	DPN	DWARF WILD COFFEE <i>Psychotria nervosa 'Little Psycho'</i>		
MSW	WART FERN <i>Microsorium scolopendrium 'Wart Fern'</i>	REL	LADY PALM <i>Rhapis excelsa</i>		
MDP	SWISS CHEESE PHILODENDRON <i>Monstera deliciosa</i>	RBM	MEXICAN PETUNIA <i>Ruellia brittoniana</i>		
NBM	MACHO FERN <i>Nephrolepis biserrata</i>	SBC	CORDGRASS <i>Spartina bakeri</i>		

0 10' 20' 40'

PRELIMINARY NOT FOR CONSTRUCTION

**CITY OF MIAMI BEACH  
FIRE STATION #01**

833 6TH STREET MIAMI BEACH, FL 33139

Project number  
**1929**

DISTRIBUTION

DATE	DESCRIPTION
12/13/2021	30% PLANS

**UNDERSTORY PLANTING PLAN**

**LP-302**



**Wannemacher Jensen Architects, Inc.**  
180 Mirror Lake Drive North  
St. Petersburg, Florida 33701-3214  
(727) 822-5566 fax (727) 822-5475  
www.wjarc.com  
AA0002277  
©Wannemacher Jensen Architects, Inc.

THE ARCHITECT'S LIABILITY IS LIMITED TO THE DESIGN AND CONSTRUCTION OF THE PROJECT AND DOES NOT INCLUDE THE DESIGN OF STRUCTURAL, MECHANICAL, ELECTRICAL, PLUMBING, OR OTHER SPECIALTY SYSTEMS. THE ARCHITECT DOES NOT WARRANT THE ACCURACY OF ANY INFORMATION PROVIDED BY OTHERS. THE ARCHITECT'S LIABILITY IS LIMITED TO THE DESIGN AND CONSTRUCTION OF THE PROJECT AND DOES NOT INCLUDE THE DESIGN OF STRUCTURAL, MECHANICAL, ELECTRICAL, PLUMBING, OR OTHER SPECIALTY SYSTEMS. THE ARCHITECT DOES NOT WARRANT THE ACCURACY OF ANY INFORMATION PROVIDED BY OTHERS.

**Calvin, Giordano & Associates, Inc.**  
EXCEPTIONAL SOLUTIONS™  
1800 E. 9th Ave., Suite 1001, Fort Lauderdale, Florida 33316  
Phone: (954) 212-1700 • Fax: (954) 212-1000  
CERTIFICATE OF AUTHORIZATION 1200000  
CJA REGISTERED PROFESSIONAL LANDSCAPE ARCHITECT  
FLA. REG. NO. 12000